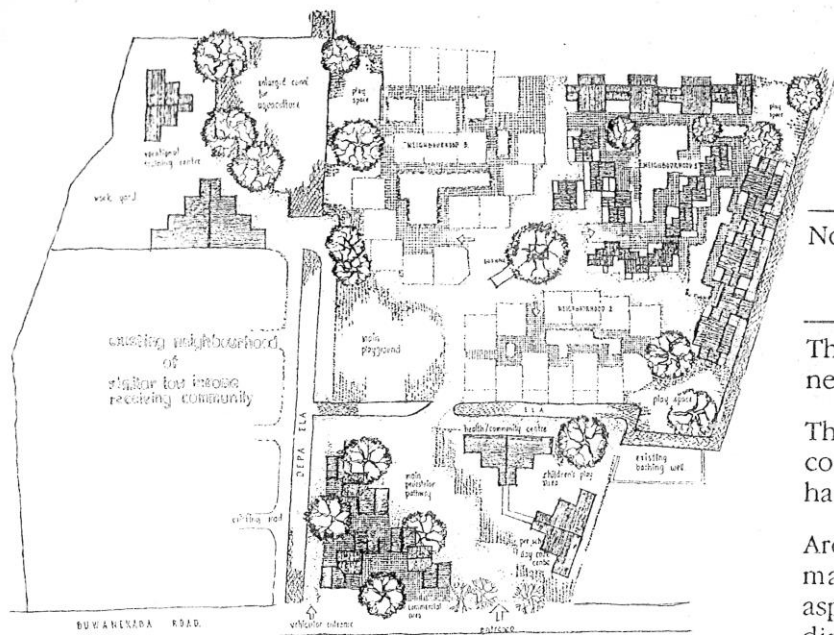


CHELTA NEIGHBOURHOOD COMPETITION



MASTER PLAN LAYOUT

Note: Although published in the Students page Archt. Primali Paranagama is a lecturer in Architecture at University of Moratuwa.

The design illustrated won the first place in the CHELTA neighbourhood competition organised by the SLIA.

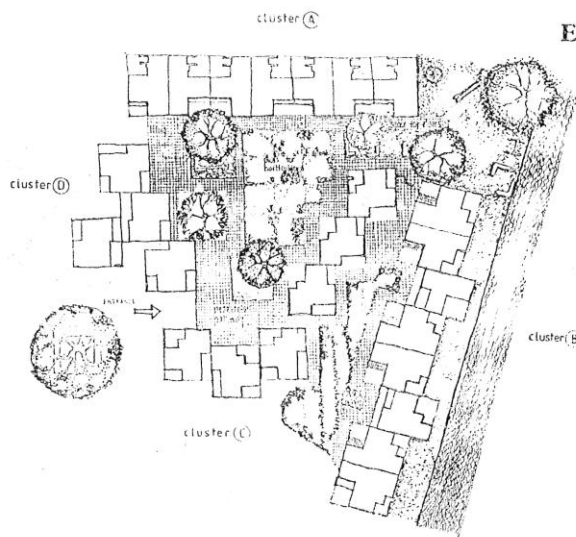
The notion of "sustainable development" although is a common phrase has remained as an abstract idea which had not moved forward to realization.

Arch. Primali Paranagama attempts to do just this; to make this known concept a reality. The three main aspects namely the human, economic and environmental dimensions of sustainability are investigated in this neighbourhood design for the resettlement of canal bank dwellers.

The site, (at Mirihana), Nugegoda) and services are provided by the Ministry of Housing and Construction. The construction is to be sponsored by the Rotary Club. The SLIA, through CHELTA hopes to reiterate its interest in such housing projects.

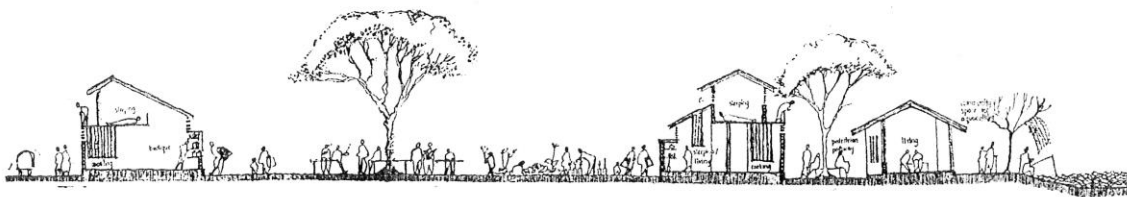


AXONOMETRIC VIEW



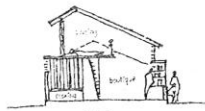
LAYOUT OF NEIGHBOURHOOD 1

Editor-in-Chief

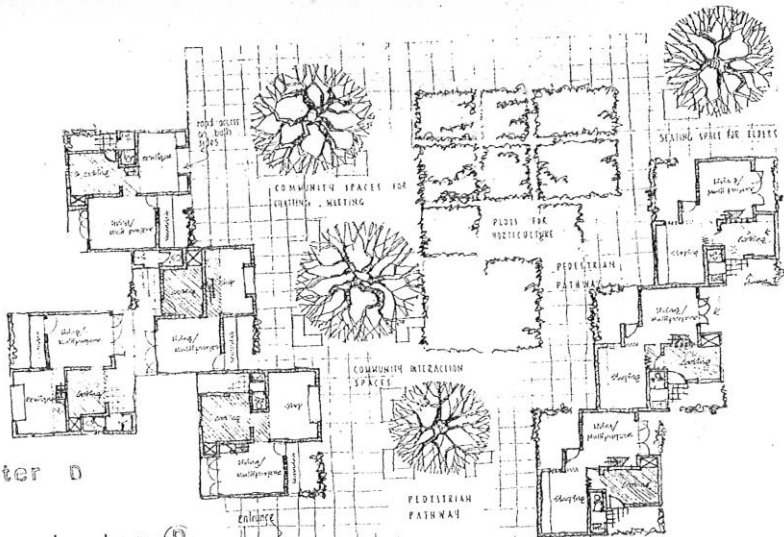


section 1-1 through layout

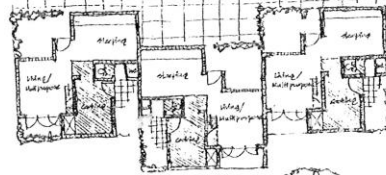
typical section cluster D



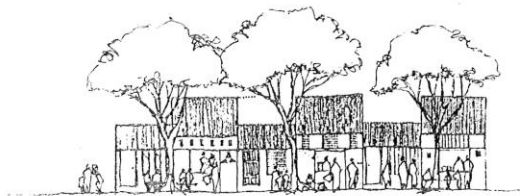
cluster D



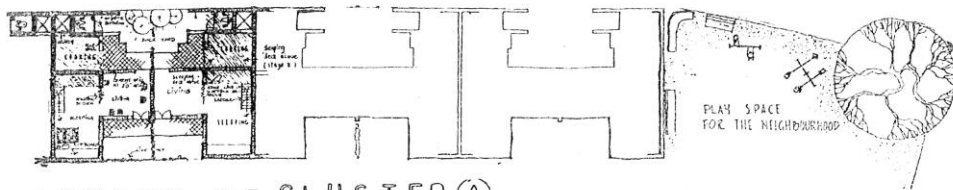
CLUSTER C



sectional elevation of cluster D

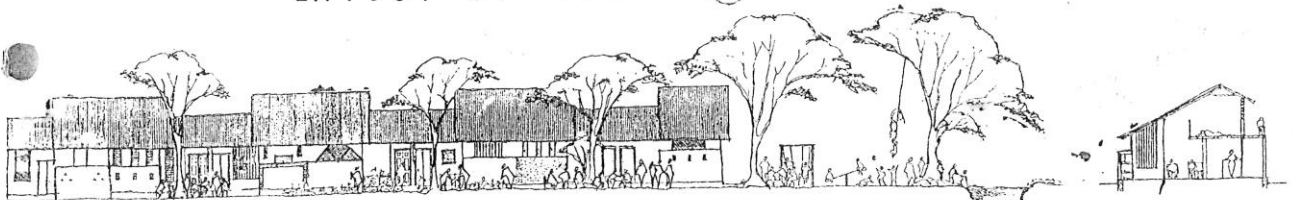


sectional elevation of cluster C



LAYOUT OF CLUSTER (A)

sectional elevation of cluster A

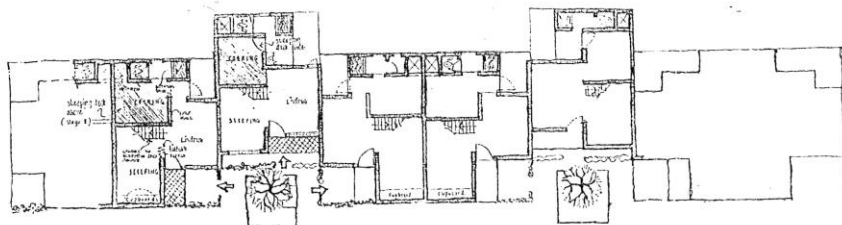


typical section

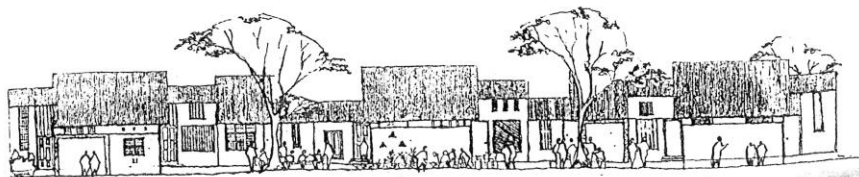


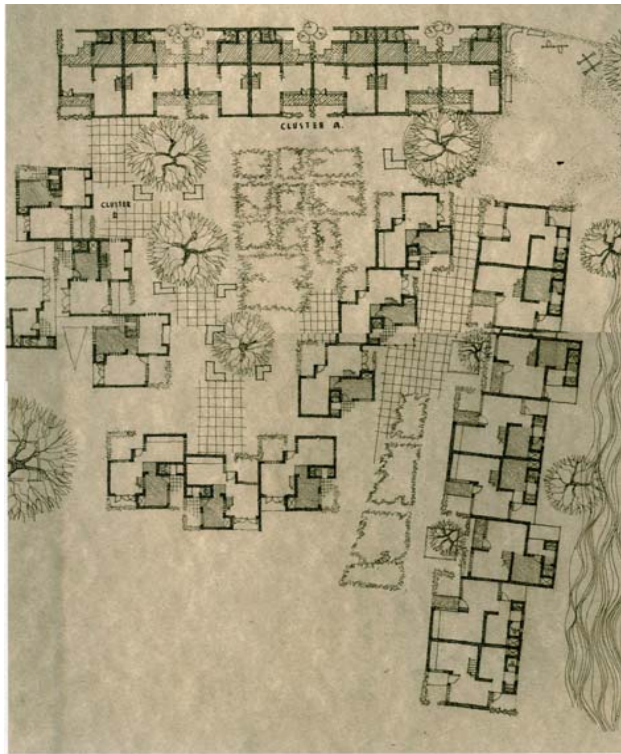
typical section

LAYOUT OF CLUSTER (B)



sectional elevation of cluster B

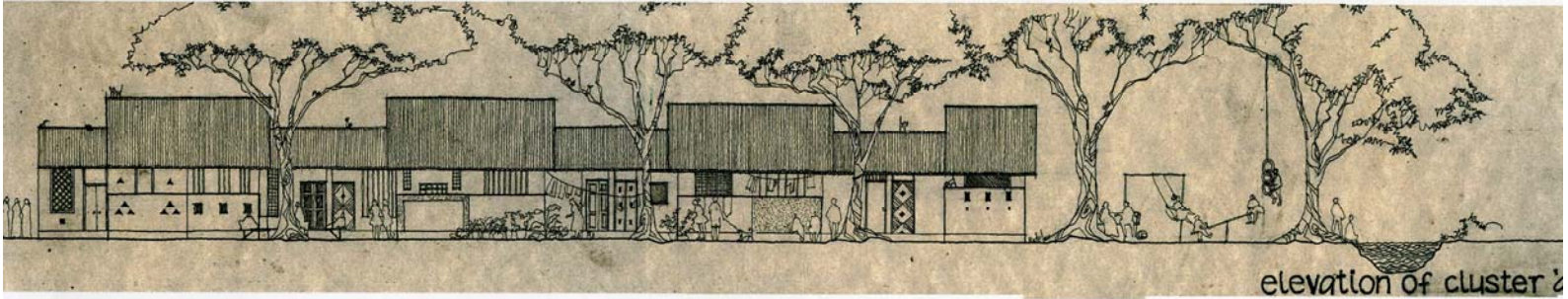




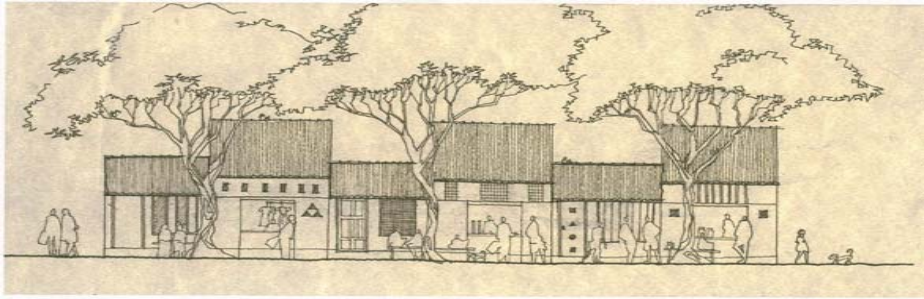
Layout Plan



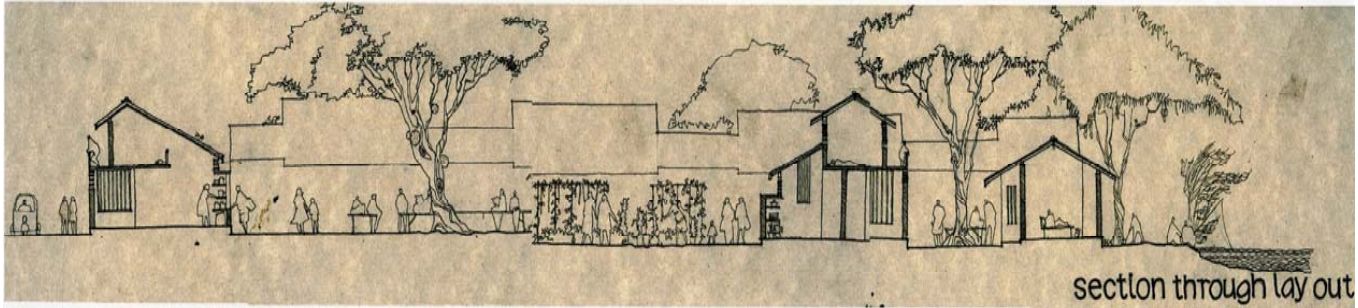
Part of Neighbourhood



elevation of cluster 2



Elevation of Cluster 'd'



section through lay out



Part of a cluster



View of common centre court



During Construction phase



After 8 years





After 8 years

A feedback study was completed in 2012. Await publication.....