

University of Nebraska - Lincoln

## DigitalCommons@University of Nebraska - Lincoln

---

Faculty Publications from the Harold W. Manter  
Laboratory of Parasitology

Parasitology, Harold W. Manter Laboratory of

---

2009

### Evaluation of Some Vulval Appendages in Nematode Taxonomy

Lynn K. Carta

*United States Department of Agriculture–Agricultural Research Service, [lynn.cart@ars.usda](mailto:lynn.cart@ars.usda)*

Zafar A. Handoo

*United States Department of Agriculture–Agricultural Research Service, [handooz@ars.usda.gov](mailto:handooz@ars.usda.gov)*

Eric P. Hoberg

*United States National Parasite Collection, [ehoberg@ggpl.arsusda.gov](mailto:ehoberg@ggpl.arsusda.gov)*

Eric F. Erbe

*United States Department of Agriculture, [weekserbe@verizon.net](mailto:weekserbe@verizon.net)*

William P. Wergin

*United States Department of Agriculture, [wwergin@msn.com](mailto:wwergin@msn.com)*

Follow this and additional works at: <https://digitalcommons.unl.edu/parasitologyfacpubs>

 Part of the [Parasitology Commons](#)

---

Carta, Lynn K.; Handoo, Zafar A.; Hoberg, Eric P.; Erbe, Eric F.; and Wergin, William P., "Evaluation of Some Vulval Appendages in Nematode Taxonomy" (2009). *Faculty Publications from the Harold W. Manter Laboratory of Parasitology*. 639.

<https://digitalcommons.unl.edu/parasitologyfacpubs/639>

This Article is brought to you for free and open access by the Parasitology, Harold W. Manter Laboratory of at DigitalCommons@University of Nebraska - Lincoln. It has been accepted for inclusion in Faculty Publications from the Harold W. Manter Laboratory of Parasitology by an authorized administrator of DigitalCommons@University of Nebraska - Lincoln.

## Evaluation of Some Vulval Appendages in Nematode Taxonomy

LYNN K. CARTA,<sup>1,5</sup> ZAFAR A. HANDOO,<sup>1</sup> ERIC P. HOBERG,<sup>2</sup> ERIC F. ERBE,<sup>3</sup> AND WILLIAM P. WERGIN<sup>4</sup>

<sup>1</sup>Nematology Laboratory, United States Department of Agriculture–Agricultural Research Service, Beltsville, Maryland 20705, U.S.A. (e-mail: lynn.carta@ars.usda.gov, handooz@ars.usda.gov) and

<sup>2</sup>United States National Parasite Collection, and Animal Parasitic Diseases Laboratory, United States Department of Agriculture–Agricultural Research Service, Beltsville, Maryland 20705, U.S.A. (e-mail: eric.hoberg@ars.usda.gov)

**ABSTRACT:** A survey of the nature and phylogenetic distribution of nematode vulval appendages revealed 3 major classes based on composition, position, and orientation that included membranes, flaps, and epiptygmata. Minor classes included cuticular inflations, protruding vulvar appendages of extruded gonadal tissues, vulval ridges, and peri-vulval pits. Vulval membranes were found in Mermithida, Triplonchida, Chromadorida, Rhabditidae, Panagrolaimidae, Tylenchida, and Trichostrongylidae. Vulval flaps were found in Desmodoroidea, Mermithida, Oxyuroidea, Tylenchida, Rhabditida, and Trichostrongyloidea. Epiptygmata were present within Aphelenchida, Tylenchida, Rhabditida, including the diverged Steinernematidae, and Enoplida. Within the Rhabditida, vulval ridges occurred in *Cervidellus*, peri-vulval pits in *Strongyloides*, cuticular inflations in Trichostrongylidae, and vulval cuticular sacs in *Myolaimus* and *Deleyia*. Vulval membranes have been confused with persistent copulatory sacs deposited by males, and some putative appendages may be artifactual. Vulval appendages occurred almost exclusively in commensal or parasitic nematode taxa. Appendages were discussed based on their relative taxonomic reliability, ecological associations, and distribution in the context of recent 18S ribosomal DNA molecular phylogenetic trees for the nematodes. Characters were found to be distributed across subsets of terminal and phylogenetically distant taxa, demonstrating considerable homoplasy. Accurate definitions, terminology, and documentation of the taxonomic distribution of vulval appendages are important in evaluations of hypotheses for either parallelism and developmental constraint or convergence and adaptation.

**KEY WORDS:** Araeolaimida, Ascaridida, Capillariidae, character analysis, cuticle, Enoplida, functional morphology, lateral field, Oxyuroidea, phylogeny, Plectidae, Rhigonematida, Trichocephalida, Triplonchida, Spirurida.

Cuticular modifications of the external nematode vulva are frequently described in different disciplines within the nematology community by using similar terms for distinctly different morphological structures, and very different terms for what may be homologous structures or analogous features with similar cellular-histological dynamics. Morphological analyses may fail to resolve phylogeny through confusion over proper character definition, coding, or awareness of interdependence or homoplasy (Giribet, 2003). Character terminology can be critical for phylogenetic analysis and identification linked to expert systems (Diederich et al., 2000). The need to standardize terminology seems to be a universal concern among nematologists, as exemplified in surveys on the extensive variability in cuticle-layering across diverse taxa (Blaxter and Robertson, 1998; Decraemer et al., 2003). In vulval appendages, terms are often used interchangeably, so confusion occurs when images are not readily available. It is our contention that distinct structures exist that should be described and generally defined so that adjectives are

not used randomly. The categories in this survey have the potential to promote the understanding of functional morphology across taxonomic disciplines. These terms can be further qualified when other studies are made to examine homology.

In nematodes the vulva is a cuticle-covered opening in the hypodermis from which eggs are laid at the ventral exterior of adult females or hermaphrodites. The shape of the opening is often a transverse slit and occasionally a longitudinal slit or symmetrical pore. Developmental biologists observed that in the *Caenorhabditis elegans* model system, the vulva is composed of 20 cells, epithelial cells and associated muscles essential for egg laying (Bird and Bird, 1991), that connect the hypodermis with the uterus (White, 1988). However, the division of exterior vulva and internal vagina is warranted for nematode morphology and taxonomy (Maggenti, 1981). For nematodes such as Dorylaimida, it is especially important to more precisely define the vulva as the outer cuticular region of the female invagination continuous in width with the body cuticle (De Ley et al., 1993).

Here, we describe the variations in terminology and morphology of vulval appendages with a survey of the literature and specific examples. The terms are

<sup>3</sup> Retired (e-mail: weekserbe@verizon.net),

<sup>4</sup> Retired (e-mail: wwergin@msn.com), and

<sup>5</sup> Corresponding author

descriptive for categories based on orientation, size, and tissue location, and they are not meant to imply homology. For example, the prerectum is a repeatedly recognizable structure with phylogenetically diverse occurrence (Carta and Osbrink, 2005), as are wings in very diverse animals. Therefore, the most common and stable vulval appendages defined and surveyed are mapped onto trees based on current hypotheses of nematode phylogeny. We also have refined ecological associations to compare occurrence among species and higher taxa that may support useful biological predictions. Because orthologous genes can act on homologous or analogous cells (Bolker and Raff, 1996) that generate external appendages, insight into their phylogeny, variability, coordinated occurrence, and structure are necessary before relevant developmental-genetic mechanisms for these natural vulval phenotypes using a candidate gene approach can be considered (Haag and True, 2001).

## MATERIALS AND METHODS

An extensive literature search was undertaken from comprehensive reviews (Chitwood and Chitwood, 1950; Maggenti, 1981; Malakhov, 1994) describing Adenophorean nematodes (Hope, 1974; Platt and Warwick, 1983, 1988; Lorenzen, 1994; Warwick et al., 1998), animal-parasitic nematodes (Skrjabin, 1949, 1951, 1952, 1954), plant-parasitic and insect-parasitic nematodes (Hunt, 1993; Siddiqi, 2000), terrestrial free-living nematodes (Goodey and Goodey, 1963; Sudhaus and Fitch, 2001; Andr assy, 1983), as well as numerous individual articles on specific taxa. When a statement is derived from taxa within taxonomic compendia such as those of Siddiqi or Skrjabin, the citation is prefaced with "in." The online database at [www.cabi.org](http://www.cabi.org), email: for Nematological and Helminthological Abstracts from PESTCABWeb, CABI Publishing, Wallingford, U.K., also was searched through monthly updates by [DialogAlertServices@dialog.com](mailto:DialogAlertServices@dialog.com) through the National Agricultural Library, Beltsville, Maryland, U.S.A., for the following terms through September 2008: lateral vulval membrane, vulval membrane, vulval fan, vulval flap, vulval dike, vulval alae, and epiptygma(ta).

## Microscopy

Some nematodes were processed for differential interference light microscopy as either heat-relaxed, live specimens (*Distolabrellus veechi* Anderson, 1983) or 3.2% formaldehyde-fixed specimens (*Aphelenchoides* sp. and an undescribed species of Mermithidae). Other nematodes (*Distolabrellus veechi*, *C. elegans*) were processed for low temperature scanning electron microscopy (LTSEM) in distilled water according to standard procedures (Wergin et al., 1993; Carta et al., 2003). Photomicrographs were oriented with ventral side facing the top of the plates. Line figures from previous publications were traced and modified or scanned from published drawings.

## Phylogeny

Three comprehensive alternative trees of nematodes were recently constructed with 18S small subunit (SSU) rDNA sequences of a large number of similar taxa (Holterman et al., 2006; Smythe et al., 2006; Meldal et al., 2007). Trees of Holterman et al. (2006) and Meldal et al. (2007) were chosen as character frameworks for this study based on taxon coverage, secondary alignment strategies, Bayesian tree-making methods, and better tree resolution. The topology of 1 tree was abstracted from a Bayesian Inference tree created with 339 taxa having 2,471 aligned SSU rDNA positions from a ClustalW alignment manually edited in accordance with arthropod sequences aligned by secondary structure (Holterman et al., 2006). The topology of a second tree was abstracted from a Bayesian Inference tree created with 212 taxa having 1,167/1,884 aligned SSU rDNA characters created from a profile alignment built upon some European RNA database sequences aligned according to secondary structure; this alignment was then culled of the most ambiguously aligned positions (Meldal et al., 2007). The Holterman tree was supplemented with information on the placement of *Brevibucca* Goodey, 1935 and new sequence of membrane-bearing *Cuticonema* Sanwal, 1959 from more ribosomal and nuclear gene characters (Kiontke et al., 2007) that demanded independent placement from the Cephalobidae, and taxonomic categories were based on pre-2002 taxonomic groupings. The Meldal tree was labelled with newer taxonomic categories (De Ley and Blaxter, 2002, 2004; based in part on Blaxter et al., 1998 and Aleshin et al., 1998) and older, lower level categories as appropriate. The current trees were made with MacClade version 4.05 software (Maddison and Maddison, 1992; Sinauer Associates, Inc., Sunderland, Massachusetts, U.S.A.) in which characters were traced on 2 different tree topologies to demonstrate the distribution of 3 of the most common vulval appendages of membranes, flaps, and epiptygmata in higher taxa. Life history associations were included in branches on trees to include 0, free-living; 1, invertebrate commensal (an important but overlooked category); 2, invertebrate parasitic; 3, animal parasitic; and 4, plant parasitic.

## RESULTS AND DISCUSSION

### Nomenclature and distribution

The names "vulval membrane" and "vulval flap" are based on the precedent set by Siddiqi (2000), where "membranes" have a primarily lateral orientation and "flaps" have a primarily parallel orientation relative to the vulval slit. An early general approach to terminology for vulval appendages was ambiguous because lateral membrane was defined as "a cuticular flap situated on both sides of the vulval slit in some nematodes. See epiptygma, "vulvar flap" (Caveness, 1964). Vulval flaps were defined as "cuticular membranes sited at both ends of the vulva. See epiptygma, lateral membrane" (Caveness, 1964). Another general description blurred the distinction among what we consider three separate structures of vulval membranes, vulval flaps, and epiptygmata—"Vulval membranes (vulval flaps) occur in some

plant-parasitic Secernentea (*Paratylenchus* and *Hoplolaimus*)” (Hirschmann, 1971). A recent compilation of designations for nematode morphological structures for identification by expert systems includes various names for 3 vulval appendages: anterior lip of vulva = (ventral vulval flap); epiptygmata = epiptygmata = (lateral membrane); lateral vulval flaps = vulval membranes = vulval dikes = vulval alae. These authors acknowledge a right to be “wrong” about the nature and naming of a structure, and the continuing need to resolve contradictory character concepts for identification and phylogeny (Diederich et al., 2000).

Vulval appendages have been studied in some detail among animal-parasitic Strongylida. Sections through the vulval region of these nematodes reveal 3 distinct types of structures (Hoberg et al., 1993b). The first includes consistent, symmetrical, lateral cuticular “fans” internally supported by hypertrophied struts, and arising from specific regions within the lateral field. They are designated here as vulval membranes. The second comprise inconsistent, irregular, asymmetrical, body wall and cuticular “flaps” with a primary anterior to posterior orientation parallel to the vulval slit, designated here as vulval flaps. The third includes inconsistent, irregular, often lateral asymmetrical cuticular “inflations” of amorphous orientation without organized strut support, similar to vulval membranes, and probably unique to the Ostertagiinae, designated as “cuticular inflations” (Chitwood and Chitwood, 1950). Examples of these types of appendages in other taxa are discussed below and illustrated (Figs. 1–19), and some are mapped onto phylogenetic trees (Figs. 20, 21).

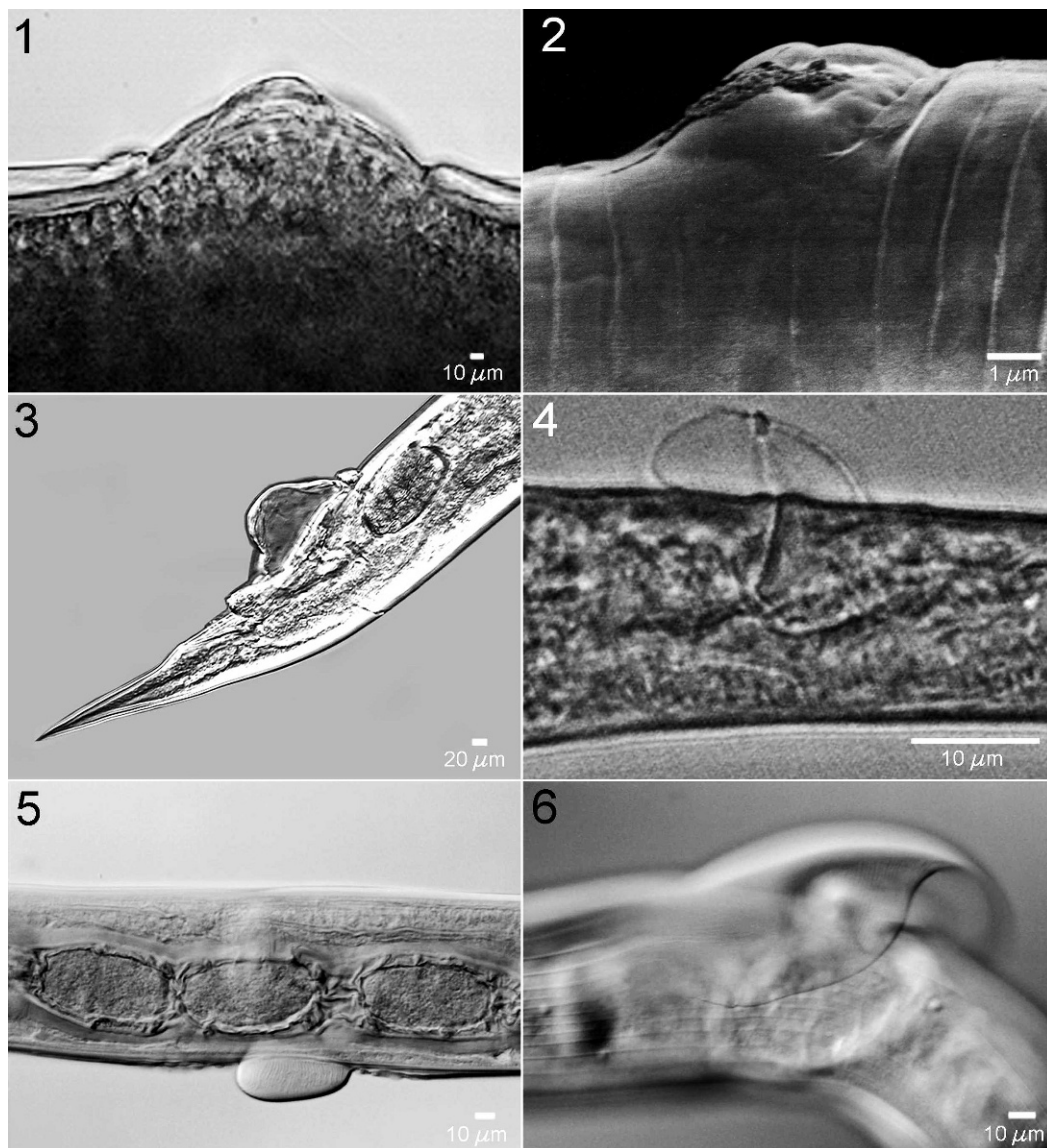
### Vulval membranes

As used here, vulval membranes are semioval, approximately symmetrical, cuticular outgrowths lateral and perpendicular to the vulval slit. Annulation or longitudinal indentations are visible on their edges. Vulval membranes are described (Figs. 1, 7–9) with various terms in different taxa in plant parasites as “lateral vulval membranes,” “lateral vulval flaps,” “vulval sheaths” or “advulval flaps”; in bacterial-feeding rhabditids as “opercula,” “ridge-like sculptures” or “flaps”; in insect parasitic mermithids as “wide lips flanking the vulva”; in animal-parasitic Strongylida as “bilateral vulval fans” or “fin-like processes”; and in animal-parasitic Trichocephalida as “lateral alate membranes.” Among the Rhabditida, vulval membranes visible with the light microscope

(LM) have been described in *Cuticonema vivipara* Sanwal, 1959 (Sanwal, 1959) (Panagrolaimoidea); *Operculorhabditis longespiculosa* Khera, 1969 (Khera, 1969) (Mesorhabditinae) (Fig. 8); and all species of *Caenorhabditis*. They are quite large in *Caenorhabditis sonoreae* Kiontke, 1997 and *Caenorhabditis drosophilae* Kiontke, 1997 (Kiontke, 1997). Much smaller vulval membranes in *C. elegans* N2 had visible annulations viewed with LTSEM (Fig. 9). Small vulval membranes also were observed with the SEM in *Rhabditis (Oscheius) guentheri* Sudhaus and Hooper, 1994, described as “longitudinal cuticular flaps 8–10  $\mu\text{m}$  long ... at each end of the vulval slit,” (Sudhaus and Hooper, 1994). An SEM view of a related free-living rhabditid nematode, *Pellioiditis pello* (Schneider, 1866) Timm, 1960, showed no vulval appendages (Eveland et al., 1990). Vulval membranes also are seen in the relatively primitive Tylenchina such as in Tyloporinae (Siddiqi, 2000), e.g., *Costlenchus* Siddiqi, 1978 (Siddiqi, 1980); *Cephalenchus* Goodey, 1962 (Golden, 1971) (Siddiqi, 2000); *Pterotylenchus* Siddiqi and Lenné, 1984 (Siddiqi and Lenné, 1984); and in one species of insect-parasitic *Deladenus* Thorne, 1941 out of 15 species in the genus (Shahina and Maqbool, 1992). *Dolichodorus longicaudatus* Doucet, 1981 is illustrated with a lateral vulval membrane (Doucet, 1981), and South American species in the related genus *Belonolaimus* Steiner, 1949 (syn. *Ibipora*), have vulval membranes (Doucet and Filisetti, 2000; Siddiqi, 2000). Vulval membranes may be found in the Criconematina, in *Paratylenchus* Micoletzky, 1922 (Raski, 1975a, b; Dolinski et al., 1996), and in *Hemicriconemoides* Chitwood and Birchfield, 1957 as “vulval sheaths” (Dasgupta et al., 1969), where they are prominent in *Hemicriconemoides cocophilus* (Loos, 1949) Chitwood and Birchfield, 1957 and *Hemicriconemoides wessoni* Chitwood and Birchfield, 1957 (Esser and Vovlas, 1990). The vulval membranes of *Pratylenchus roseus* Zarina and Maqbool, 1998 are unique within this genus (Zarina and Maqbool, 1998). In the adenophorean terrestrial mermithid *Tunicamermis melelonthae* Schuurmans-Stekhoven, Mawson, Couturier, 1963, they are described as wide lips that flank the vulva (Poinar, 1975b).

### Vulval flaps

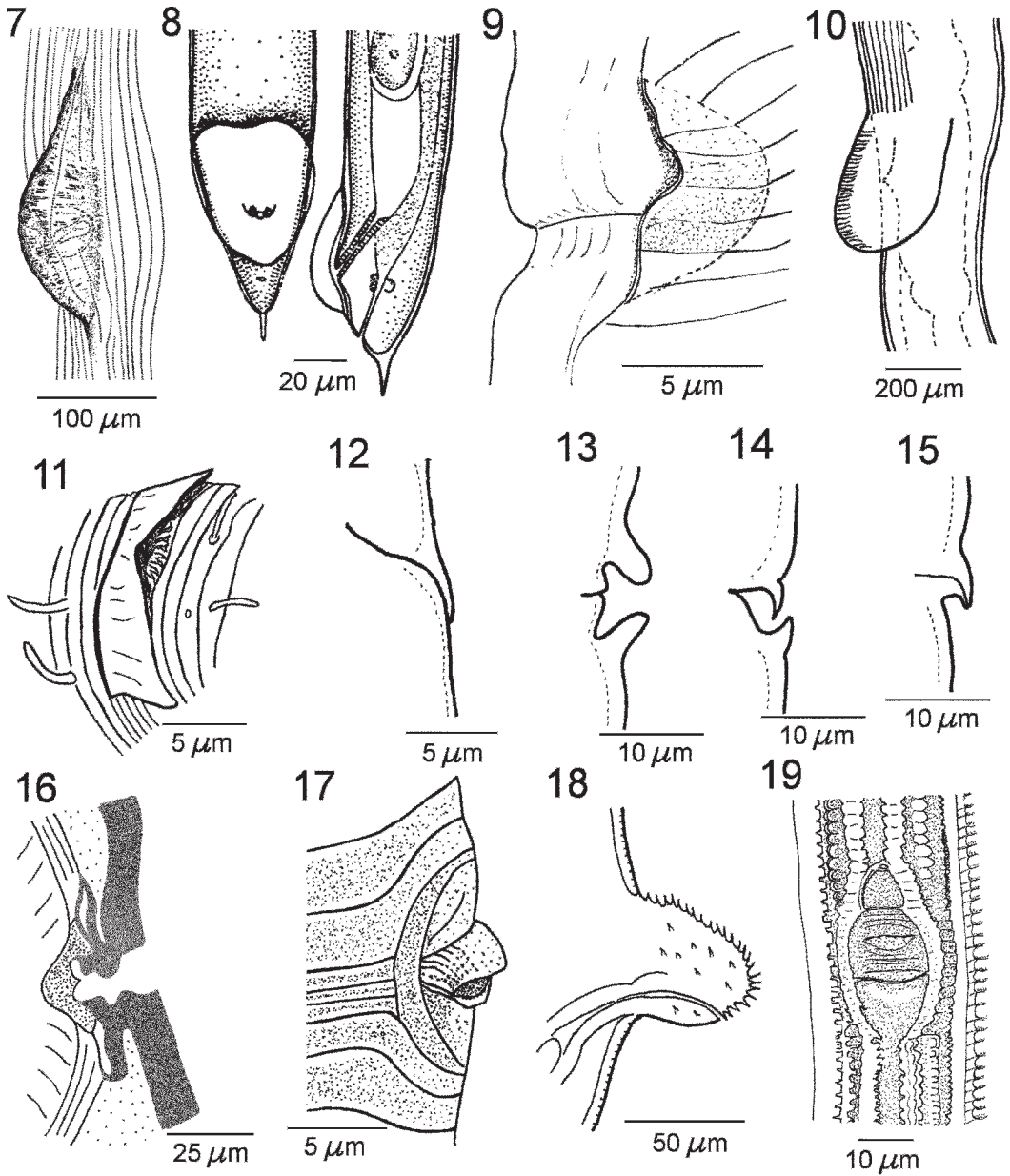
The word “flap” in the literature is the most ambiguous term of all, because it has been used to describe what is designated here as vulval membrane, vulval flap, or epiptygma. As used here, vulval flaps



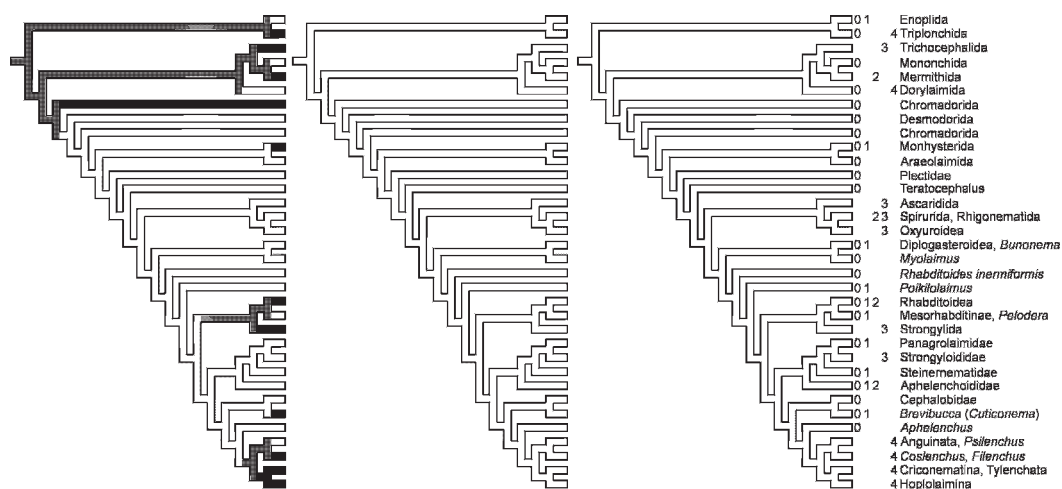
**Figures 1–6.** Comparative structure of vulval appendages. **1.** Vulval membrane of unidentified mermithid (Mermithidae). **2.** Protruded vulva with unseparated lateral cuticular seam from unmated female of *Distolabrellus veechi* (SEM). **3.** Persistent copulatory sac of mated female, *D. veechi*. **4.** Persistent copulatory sac of *Aphelenchoides* sp. **5.** Vulval cuticular inflation of *Hyostromylus rubidus* (after Hoberg et al., 1993a). **6.** Vulval flap, *Ostertagia mossi* (after Hoberg et al., 1993b).

are mild-to-extreme modifications of the anterior vulval lip that show up as overhanging extensions of cuticle oriented parallel and anterior to the vulval slit (Figs. 6, 10–12). Vulval flaps were described as such among the primarily plant- or insect-parasitic Tylenchida and Aphelenchida, including the prominent structures of *Rhadinaphelenchus* J. B. Goodey, 1960 (Nickle, 1970); a sclerotized, jointed flap in *Aphelenchoides vigor* Thorne and Malek, 1968 (Thorne

and Malek, 1968); and variably sized flaps in *Bursaphelenchus* Fuchs, 1937 (Nickle et al., 1981), where they exist in approximately one third of the known species (in Yin et al., 1998; Braasch, 2001). A small vulval flap has sometimes been observed in the tylenchid weevil parasite *Elaeolenchus parthenonema* Poinar, Jackson, Bell, and Wahid, 2002 after it enters the insect but not in the infective female (Poinar et al., 2002). Vulval flaps are found in some



**Figures 7–19.** Comparative structure of vulval appendages. **7.** Vulval membrane of *Cooperia neitzi* (after Hoberg et al., 1993c). **8.** Vulval membrane of *Operculorhabditis longespiculosa* (after Khera, 1969). **9.** Vulval membrane of *Caenorhabditis elegans*. **10.** Vulval flap of *Ostertagia occidentalis* (after Hoberg et al., 1993b). **11.** Vulval flap of *Epsilonema espeeli* (after Verschelde and Vincx, 1994). **12.** Vulval flap of *Bursaphelenchus pinasteri* (after Baujard, 1990). **13.** Epitygma of *Steinernema ritteri* (after De Doucet and Doucet, 1990). **14.** Epitygma of *Hoplolaimus seinhorsti* (after Sher, 1963). **15.** Epitygma of *Morulaimus geniculatus* (after Sauer, 1965). **16.** Epitygma of *Deontostoma californicum* (after Hope, 1974). **17.** Double epitygma of *Plesiorotylenchus striaticeps* (after Elekçioğlu, 2000). **18.** Protruding vulvar appendage of *Trichocephalus skrjabini* (after Skrjabin, 1954). **19.** Vulval ridges of *Cervidellus baujardi* (after Mounport et al., 2002).



**Figure 20.** Phylogenetic trees for nematodes with vulval appendages (left, vulval membranes; center, vulval flaps; right, epiptygmata; Appendix 1) mapped onto one topology based on 18S SSU-rDNA molecular-based trees (after Holterman et al., 2006). Numbers before taxa signify presence but not necessarily predominance of the following life history characters: 0, free living; 1, invertebrate phoretic or commensal; 2, invertebrate parasitic; 3, vertebrate parasitic; and 4, plant parasitic.

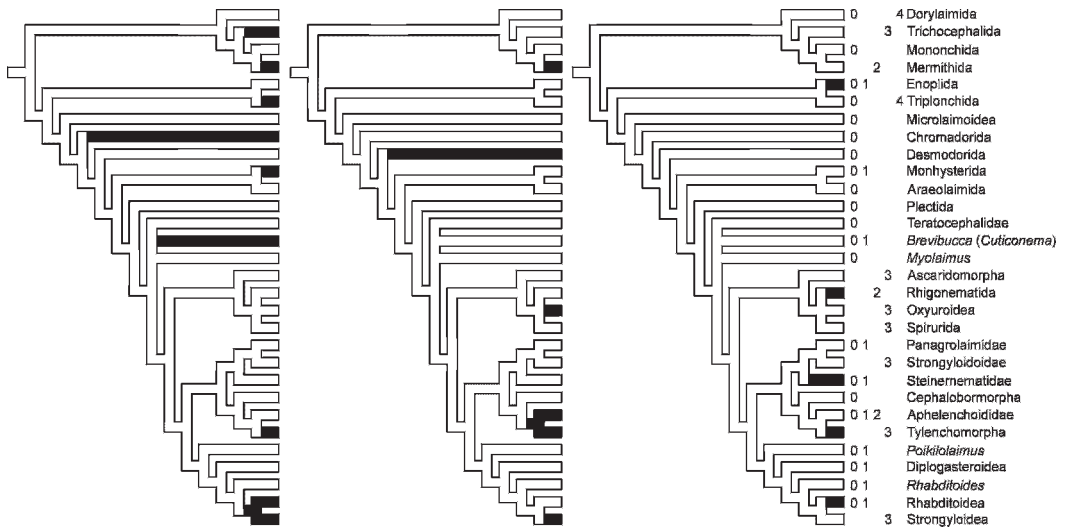
aquatic genera of insect parasitic Mermithidae that include *Hydromermis* Corti, 1902; *Lanceimermis* Artyukhovskiy, 1969 (Nickle, 1972); *Limnomermis* Daday, 1911; *Amphimermis* Kaburaki & Inamura, 1932; and *Diximermis* Nickle, 1972 (Nickle, 1972). Vulval flaps also were noted in a free-living marine nematode, *Epsilonema espeeli* Verschelde and Vincx, 1994 (Desmodoroidea) (Verschelde and Vincx, 1994). In plant parasites (Tylenchoidea), the vulval flap was described as a “vulval sleeve” in *Hemicycliophora penetrans* Brzeski, 1974 (Brzeski, 1974), and “lip flap” in the Ecphyadophorids (Tylenchoidea) (Siddiqi, 2000), such as *Ecphyadophora sheri* Raski, Koshy and Sosamma, 1982 (Raski et al., 1982).

Among animal parasites, vulval flaps are present in some Trichostrongyloidea, such as *Ostertagia osterlagi* (Stiles, 1892), in which the degree of bovine immune response influences the presence, size and symmetry of the flap (Michel and Sinclair, 1969; Michel et al., 1972). Vulval flaps also are found among other species and genera of the Ostertagiinae, including other species of *Ostertagia* Ransom, 1907 (Fig. 6) and species of *Spiculoptertagia* (Orloff, 1933), *Mazamastrongylus* Cameron, 1935, and *Teladorsagia* Andreeva and Satubaldin, 1954 (Hoberg et al., 1993b). Among Haemonchinae, the putative sister-group of Ostertagiinae (Hoberg and Lichtenfels, 1994; Durette-Desset et al., 1999), a considerable amount of body wall occurs in the flaps characteristic of *Haemonchus contortus* (Rudolphi, 1802), *H. placei* (Place, 1893), and *H. similis*

Travassos, 1914 (e.g., Das and Whitlock, 1960; Gibbons, 1979; Lichtenfels et al., 1994).

### Epiptygmata

Epiptygmata (singular epiptygma) (Figs. 13–17) are cuticular protrusions on 1 or both vulval lips or the vaginal wall (Siddiqi, 2000). The smallest epiptygmata seem to be strictly cuticular, but larger epiptygmata as currently defined (Baujard et al., 1991a, b) seem to involve cuticle and 1 or more protruding cells. Within plant-parasitic Tylenchida, epiptygmata are generally small and common as in most Hoplolaimoidea and Merliniinae, and some Dolichodoroidea (5 species in *Belonolaimus*) (Siddiqi, 2000). However, large double epiptygmata are described in many populations of *Plesiorotylenchus striaticeps* Elekçioğlu, 2000 (Tylenchida, Tylenchida) (Elekçioğlu, 2000) and in *Scutellonema cavnessi* Sher, 1964 (Hoplolaimina, Tylenchida) (Baujard et al., 1990). These protruding lips were described previously with an inner and outer, double epiptygma composed of exocuticle and mesocuticle, but not endocuticle (DeGrise and Roose, 1975). Double epiptygmata also are seen in more distantly related Steinernematida within multiple species of *Steinernema* (in De Doucet and Doucet, 1990; Stock et al., 2001). Steinernematids were classified under Rhabditida, but more recently they were placed within Tylenchida under new infraorder Panagrolaimomorpha based on 18S rDNA phylogeny (De Ley and Blaxter, 2002, 2004).



**Figure 21.** Phylogenetic trees for nematodes with vulval appendages (left, vulval membranes; center, vulval flaps; right, epiptygmata; Appendix 1) mapped onto one topology based on 18S SSU-rDNA molecular-based trees (after Meldal et al., 2007). Numbers before taxa signify presence but not necessarily predominance of the following life history characters: 0, free living; 1, invertebrate commensal; 2, invertebrate parasitic; 3, vertebrate parasitic; and 4, plant parasitic.

It is sometimes difficult to determine from taxonomic descriptions whether hypertrophy of the body wall has occurred within overhanging, asymmetrical vulval lips, so the distinction between flaps and epiptygmata can be subtle. Within non-Secernentean nematodes, the exceptional presence of a small epiptygma-like structure is found in *Deontostoma californicum* Hope, 1974 (Enoplida), which has a small vulval groove and lip (Hope, 1974). Although the structure is asymmetric and seals the vulval opening, it would not be large or superficial enough to be considered a flap. Epiptygmata and vulval membranes may be present in the same nematode, as in *Coslenchus costatus*; *Antarctenchus hooperi* Siddiqi, 1980 (Siddiqi, 1980); or *Rhabditis (Oscheius) guentheri* (Sudhaus and Hooper, 1994). However, epiptygmata do not seem to coexist with vulval flaps, at least nominally in published descriptions. We also are unaware of any studies demonstrating a transformation between epiptygmata and flaps in individual nematodes. Although small cuticular epiptygmata are oriented parallel to the slit, like vulval flaps, their size and presence in a nematode population also may be inconsistent within a population as with projecting and nonprojecting epiptygmata in *Scutellonema* Andr ssy, 1958 (Mekete et al., 2008), but details of this variability were not given. The vulva, vagina, and uterus seem to be stretched in an individual in which an epiptygma is not projecting, so it is unclear whether a proportion of the

population did not possess epiptygmata (Mekete et al., 2008). Ambiguity also is especially apparent within structures of Hoplolaimidae and Telotylenchidae.

**Vulval cuticular inflations**

Irregular “cuticular inflations” (Chitwood and Chitwood, 1950) of variable orientation around the vulva exist in some individuals within species of *Hyostrongylus* Hall, 1921 such as *Hyostrongylus rubidus* (Hassall and Stiles, 1892) Hall, 1921 (Fig. 5) (Hoberg et al., 1993a). They also occur in species of *Longstrongylus* Le Roux, 1931, *Mazamastrongylus*, and *Camelostrongylus mentulatus* (Railliet and Henry, 1909) (Hoberg et al., 1993c). Within certain species of Spirurida, vulval inflations of the anterior lip (Digiani, 1999) or of both lips occur, but this feature was not included in a species-level parsimony character analysis (Zhang et al., 2003). Cuticular inflations due to fluid expansion in the medial cuticle layer near the bacillary bands in capillariid whipworms (Wright, 1975) are not generally associated with the vulva, although some of these species have everted vulvae (Lanfredi et al., 1995).

**Protruding vulvar appendages**

These are nonartificial vulval elaborations in which part of the female reproductive system evaginates, with different degrees of exposure of the vulva, vagina, or uterus, depending on species



(Lanfredi et al., 1995). They may have variable shapes, including funnel-shaped, tubular (Lanfredi et al., 1995), or globular (Ching, 1990). These structures also are known as “protruding vulvar folds” (Kalia and Gupta, 1984), or even “noncuticular, transparent formations” (terminology used in Skrjabin, 1954). These structures that represent partially or fully everted gonadal tissue are described in adenophorean capillariid Trichocephalida as large toroidally “protruding membranes” as in *Capillaria caudinflata* Molin, 1858 (Fig. 18) (Skrjabin, 1954). The vulvar appendage in *Capillaria ohbayashi* Justine, 1992 was variably present and may not exist in some individuals within the species (Justine, 1992), probably due to their generation on oviposition (Lanfredi et al., 1995). In secernentean pinworms (Heteroxyematidae, Oxyuroidea) there are “beak-like” structures composed of uterus and surrounding, hypertrophied vulval lips that protrude from the body that are not artifacts of fixation (Hoberg and Pilitt, unpublished data).

Highly protruding vulval lips were described in proposed new genera *Eminensia* Mahajan, 1980 and *Evaginorhabditis* Sultan, Kaul and Chhabra, 1985, but they were more likely artifacts of fixation in a relatively weak morphological structure (De Ley, 1995). Vulval lips also protrude normally even before egg laying in *Distolabrellus veechi* Anderson, 1983 (Fig. 2), but they often protrude with age in many rhabditids and some tylenchids, e.g., insect-parasitic *Deladenus* (Chitambar, 1991). The thickness and protrusion actually seemed to be characteristic of species such as *Aphelenchus avenae* Bastian, 1865 but not of the related *Aphelenchus isomerus* Anderson and Hooper, 1980 (Anderson and Hooper, 1980). Unusual evaginated uteri, in which vulval and body cuticle were left behind, were found in secernentean tylenchid Sphaerularioidea (Siddiqi, 2000) and would be distinct from all structures mentioned above.

### Miscellaneous cuticular vulval appendages

In females of *Cervidellus baujardi* Mounport, Bostrom and Villenave, 2002 (Rhabditida: Cephalobidae), protruding tessellate ridges along the body had a concave modification perpendicular to each side of the vulval slit for the length of 16 annules to form a lateral cuticular ridge. This delimited a spindle-shaped window above a sunken vulva region (Fig. 19). This structure was unique among species in the genus (Mounport et al., 2002) and is here denoted a “lateral vulval ridge.”

Another peri-vulval cuticle modification of villi-filled pits occurred in parasitic females of *Strongy-*

*loides fuelleborni kelleyi* von Linstow, 1905 (species in Viney et al., 1991). This species caused potentially fatal human infections in New Guinea and was distinguished from the less pathogenic *Strongyloides fuelleborni fuelleborni* von Linstow, 1905 (species in Viney et al., 1991) in African primates by their presence. The paired pits were 90 degrees lateral to the vulva, extending the length of 12 distorted annules (Viney et al., 1991). Small subunit18S rDNA sequences demonstrated that the morpho-“subspecies” from New Guinea actually resided in a separate tree clade, close to *Strongyloides papillosus* Chang and Graham, 1957 from various domestic animals (Dorris et al., 2002). Thus, the pits seemed to be convergences associated with primate hosts. Host immunity is associated with reduced body and gonad size in *Strongyloides ratti* Nigon and Roman, 1952 and damage to *Strongyloides stercoralis* (Bavay, 1876) Stiles and Hassall, 1902 (Wilkes et al., 2004).

Another vulva-associated structure is a cuticular saccate protrusion that acts like a spermatophore-like capsule to catch sperm from males that lack spicules (Fürst von Lieven et al., 2005). This was described as a vulval cuticular sac in related *Deleyia* Holovachov and Boström, 2006 (Holovachov and Boström, 2006).

### Copulatory sacs or plugs

The copulatory sac (Chitwood, 1929), more recently designated as the copulatory plug (Barker, 1994) is a translucent to opaque protrusion around the vulva deposited by males during copulation via male cement glands. This plug secretion is often confused with a cuticular vulval membrane (Figs. 3, 4). However, upon more extensive survey, multiple sacs may be found (Chitwood, 1929); the margins are often irregular (Gerber and Giblin-Davis, 1990); no cuticular markings are evident; and the sac is sticky to bacteria, sperm, or a needle. Spicules and eggs can move through an obscure canal or punctum within the sac (Chitwood, 1929). The sacs were observed without bacteria and compared with unmated females with many bacteria around the vulva. The caudal alae of *Pelodera strongyloides* (Schneider, 1860) Schneider, 1866 also shaped the final form of the plug (Wagner and Seitz, 1983). The ability of *P. strongyloides* to dissolve a tunnel within the sac to reinseminate the female (Chitwood, 1929) led to speculation that the male may have release glands allowing separation (Sarr et al., 1987). Plugs were variably present in some strains of *C. elegans* (Maupas, 1900) Dougherty, 1953 (Barker, 1994) and a few other rhabditids, but they may not be as

obvious at the LM level as in the larger genera. A yellow liquid accumulates in the seminal vesicle of mating males and is secreted after insemination (Barker, 1994). Copulatory sacs may be viewed with various stains such as those used for plant-parasitic nematode egg matrices (Southey, 1986). Persistent copulatory sacs are prominent in rhabditids *Teratorhabditis* (Osche, 1952) Dougherty, 1955 (Gerber and Gibling-Davis, 1990), *Cruznema* Artigas, 1927 (Andrássy, 1983), *Distolabrellus* (Anderson, 1983), *Pelodera* Schneider, 1866, *Cephalobus* Bastian, 1865 (Chitwood, 1929), *Acrobeloides* (Cobb, 1924) (Jairajpuri and Azmi, 1977), *Acrobeles* von Linstow, 1877 (Steiner, 1929), and in the female generation of *Heterorhabditis* Poinar, 1975 (Poinar, 1975a). Such structures, occurring as amorphous, irregular, darkly pigmented accumulations capping the vulva also are noted among some Strongylida, including species of *Oesophagostomum* Molin, 1861. Copulatory sacs also have been noted (Sarr et al., 1987) in plant-parasitic *Scutellonema cavenessi* Sher, 1964 (Demeure et al., 1980), and the marine nematode *Desmodora schulzi* Vincx, 1983 (Vincx, 1983).

The ambiguity of cuticular and secreted vulval appendages is partly due to the often-symmetric shape and refractive edge of the copulatory sac. The confusion also may be due to the close phylogenetic relationship of nematodes with both structures. One putative vulval membrane of the monotypic genus *Operculorhabditis* Khera, 1969 (Rhabditida) that is briefly described in the literature (Khera, 1969) can be confused even by seasoned taxonomists with the copulatory sac of the rhabditids mentioned above (Fig. 8). Similarly, within the Aphelenchina, in which true vulval flaps also occur, an *Aphelenchoides* Fischer, 1894 species has a copulatory sac similar in appearance to a vulval membrane except for the punctum and lack of annulation (Fig. 4). Copulatory sacs or plugs are common within some females of Rhigonematida in which they may anchor ephemeral spermatophores from the male and exclude other males. Vulval flaps in some species seemed to aid in the protective function proposed for the plugs (Hunt, 2001).

### Phylogenetic utility

Due to morphological and nomenclatural variability, vulval appendages must be described carefully in nematode taxonomy. Among Trichostrongylidae, occurrence of flaps exhibits homoplasy with some representation among distantly related Cooperiinae and in the putative sister-groups Ostertagiinae + Haemonchinae (Hoberg and Lichtenfels, 1994; Dur-

ette-Desset et al., 1999). Vulval flaps are variable among haemonchines and considered unreliable for separating species in *Haemonchus* Cobb, 1898 and *Ashworthius* Le Roux, 1933 (e.g., Lichtenfels et al., 1994; Drózdź et al., 1998), or among the diversity of ostertagiine nematodes in which they are observed. Similarly, vulval membrane-like structures described as cuticular inflations also are unreliable in the species *Hyostrongylus rubidus* (Fig. 5) and *Hyostrongylus kigeziensis* Durette-Desset, Ashford, Butynski, and Reid, 1992 (Hoberg et al., 1993a). Vulval flaps and vulval membrane-cuticular inflations are occasionally characteristic of these species, often in different proportions within populations (Gibbons, 1987), but they are not reliable characters. Not only are the vulval flaps variable in *Haemonchus*, and the ostertagiines *Hyostrongylus*, *Ostertagia*, *Spiculopteria*, and *Teladorsagia*, they are generally variable in occurrence within genera and among conspecifics across the Ostertagiinae. Thus, they are considered unreliable even for species-level identification. However, their variable phenotypes have been used to characterize ecotype populations that may represent incipient species (Whitlock and Le Jambre, 1981).

Vulval membranes seem to be consistently present in a few species within the animal-parasitic Cooperiinae (Strongylida), as well as some primitive plant-parasitic species within the Tylenchida. Vulval membranes (described as “bilateral vulval fans”) are consistent features easily seen with the LM in the related animal parasites *Parostertagia heterospiculum* Schwartz and Alicata, 1933; *Cooperia neitzi* Mönnig, 1932 (Fig. 7); *Cooperia verrucosa* Mönnig, 1932; and *Cooperia okapi* Leiper, 1935 (Hoberg et al., 1993c); and in bacterial-feeding facultative or phoretic parasites *Rhabditis* (*Choriorhabditis*) *dubia* Boviën, 1937 (Osche, 1952) (Sudhaus and Kühne, 1989) and *Rhabditis* (*Caenorhabditis*) *sonorae* (Sudhaus and Kiontke, 1996). In *Rhabditis* (*Oscheius*) *guentheri* (Sudhaus and Hooper, 1994) and *Caenorhabditis elegans*, they are only easily seen with the SEM. However, in the monotypic genus *Operculorhabditis* Khera, 1969 membranes are described as deciduous, an exceptional condition for cuticular membranes in the literature. These may not be cuticular structures, because annular incisures are not included on the drawing. In addition, variability among the 7 collected females is unknown because original material was not available, and the species has not been found again. In face view, there also seems to be an exceptional ventral extension connecting the “membranes” (Khera, 1969) that

could be persistent copulatory sacs. Sometimes deciduous copulatory sacs are present in the morphologically similar genus *Teratorhabditis*.

Although the presence of an epiptygma-like vulval flap in *Epsilonema espeeli* Verschelde and Vincx, 1994 (Chromadorida) is constant, the shape is not (Verschelde and Vincx, 1994). Epiptygmata are fairly common and reliable in some groups of nematodes with a central vulva and two-armed gonads such as in the Dolichodoroidea, Hoplolaimidae, Psilenchidae (Siddiqi, 1986), and Steinernematida (De Doucet and Doucet, 1990). However, the dolichodoroid nematode *Melinius adakensis* Bernard, 1984 (Tylelenchidae) has considerable shape variation of epiptygma either on the dorsal or ventral lip (Bernard, 1984). In Dolichodoroidea such as *Ibipora* Monteiro and Lordello, 1977 (Belonolaimidae), epiptygma coexist with vulval membranes (in Siddiqi, 2000). In Rhabditidae (Sudhaus and Hooper, 1994) epiptygma are less common, but here they also may coexist with membranes. However, it was noted that epiptygmata on the posterior lip (exceptionally on the anterior lip) of *Rhabditis* (*Oscheius*) *guentheri* were not apparent in live, but only fixed material (Sudhaus and Hooper, 1994). This observation also might apply to some live parasitic nematodes for which observations and measurements are often not made until material is fixed.

### Phylogenetic patterns of individual and combined characters

Associations of vulval appendages of different nematode taxa can be visualized through the mapping of characters on phylogenetic trees as depicted in Figs. 20 and 21. It was not appropriate to use the "concentrated changes" test for character correlation of MacClade because this phylogeny was not fully resolved to reflect the frequent character reversals at the species level. These trees are descriptive; the true incidence of any character correlations may be possible in the future when more detailed phylogenies become available among all the relevant taxa.

There is a unique acquisition of vulval membranes occurring 5 (Fig. 20) to 7 (Fig. 21) times in the listed higher level taxonomic categories, of vulval flaps occurring 5 (Fig. 20) to 6 (21) times, and epiptygmata 5 times (Figs. 20, 21). These structures occur most often in terminal taxa where phylogenetic resolution is generally not available. Examples of exceptional vulval membranes include 1 insect-parasitic tylenchid *Deladenus* species among 15 (Shahina and Maqbool, 1992); 1 plant-parasitic *Pratylenchus* Filipjev, 1936 (Zarina and Maqbool, 1998) species among more than

60 species (Ebsary, 1991); and 1 *Cuticonema* (Rhabditida) among the entire Panagrolaimoidea (Sanwal, 1959). The relatively shallow branching pattern of vulval appendages also was also seen in recent species—and generic—level phylogenies. Among species of *Steinernema* Travassos, 1927, epiptygmata arose at least 4 times (Stock et al., 2001). Vulval membranes arose in Rhabditidae at least 3 times (Sudhaus and Kiontke, 1996).

### Cuticle ridges and lateral field

Well-developed vulval appendages in some species may sometimes be associated with a recognizable pattern of cuticular features such as lateral field incisures or lateral ridges. Among the 28 species of plant-parasitic and insect-phoretic *Bursaphelenchus* (Aphelenchida) in European conifers, 4 groups are distinguished in part by 2 to 4, or 6 lateral incisures associated with presence and size of vulval flaps. The largest flaps occur in taxa having 3 lateral lines (Braasch, 2001). The 6 genera within plant-parasitic Merliniinae (Tylenchina) have 6 lateral incisures and epiptygmata, but epiptygmata are generally lacking in related genera with fewer incisures (in Siddiqi, 2000). Among the other genera of Tylenchorhynchinae with prominent longitudinal lines and ridges, *Mulkorhynchus* Jairajpuri, 1988 (syn. *Dolichorhynchus* Mulk and Jairajpuri, 1974) has vulval membranes and 4 incisures, but there are no membranes in related *Prodolichorhynchus* Jairajpuri, 1985 with 2 incisures (in Jairajpuri and Hunt, 1984).

Cuticular ridges are strongly associated with appendages in some taxa, in which case appendages may be inversely associated with lateral field incisures. *Eutylenchus* Cobb, 1913 (Tylenchina) has vulval membranes, with lateral, mid-dorsal, and mid-ventral ridges and no lateral incisures (Brzeski, 1996), but related *Atylenchus* Cobb, 1913 lacks vulval appendages and ridges but has lateral incisures (Siddiqi, 2000). In South American species of *Belonolaimus* (syn. *Ibipora*, Tylenchina), 6 incisures occur with lateral membranes and small epiptygmata, whereas in species lacking membranes but having small epiptygmata, only 1 incisure exists (Siddiqi, 2000). Within a recent phylogeny of *Caenorhabditis*, *Caenorhabditis sonoreae* Kiontke, 1997 had a smooth lateral field without incisures and moderately developed vulval membranes (Kiontke, 1997), both of which were unusual in this genus (Sudhaus and Kiontke, 1996). In trichostrongylid animal parasites, there are more midbody synlophe ridges and larger vulval membranes in *Cooperia nietzi* and *C.*

*verrucosa* than in *C. okapi* (Hoberg et al., 1993c). In distantly related trichostrongylid stomach worms (Haemonchinae) possessing large, irregular flaps, *Haemonchus similis* has 4 more nonlateral ridges at midbody that extend more posteriorly than in related *H. placei* and *H. contortus*. These more extensive ridges are associated with a more complex vulval structure in which the vulval slit actually resides within the flap. In contrast, *H. placei* and *H. contortus* have less elaborate flap lobes anterior to the vulval slit, and synlophic ridges do not extend very far posteriad from the cervical zone (Lichtenfels et al., 1994). Variation among haemonchines is apparent, however, because both *Haemonchus horaki* Lichtenfels, Gibbons and Boomker, 2001 and *Ashworthius patriciapillitae* Hoberg, Abrams, Carreno and Lichtenfels, 2002 have a synlophic extending to near the caudal extremity, and relatively simple vulval flaps (Lichtenfels et al., 2001; Hoberg et al., 2002). The exceptional vulval membranes in *Aulolaimus* (Chromadorida) are associated with a fairly high number of longitudinal ridges within the genus (38 within a range of 12–50) (in Shahina et al., 1996). These associated ridge, lateral field, and appendage features seem to indicate some type of structural coordination within all these diverse taxa.

Besides well-developed cuticular longitudinal ridges, a tendency toward cuticle loosening is notable especially among plant-parasitic Tylenchidae, Criconematidae, and Trichodoridae that possess vulval membranes. In *Hemicriconemoides*, 7/46 species have membranes (designated “lateral cuticular flaps” in Siddiqi, 2000), and a sheath composed of a second cuticular layer; both males and females have lateral fields (Esser and Vovlas, 1990). However, there are no membranes in related species within the Criconematinae and Macroposthoniinae in which females lack lateral fields and sheaths (Brzeski et al., 2002a, b).

### Vulva position

Within plant-parasitic *Paratylenchus* Micoletzky, 1922, the position of the vulva is associated with the degree of development of vulval membranes. A survey (Appendix 2) based on a comprehensive compendium of species (Esser, 1992) showed 64/71 *Paratylenchus* species with vulval membranes, and 23/41 of related *Gracilacus* Raski, 1962 species with membranes. Species that lacked membranes with morphometric values for vulval distance from anterior body lengths of Vulva% less than 80%, and those with ranges more than 80% had well developed appendages. A comprehensive phylogeny of these genera based on indepen-

dent characters is not yet available to assess possible vulval membrane reversals within this group.

For most other taxa, vulval position and appendage presence is not so closely linked, especially at higher taxonomic levels. Although *Cuticonema* (Panagrolaimidae) and many primitive Tylenchina with vulval membranes have posterior vulval positions, more phylogenetically derived species in *Antarctenchus* (Psilenchidae), *Neodolichorhynchus* (*Mulkorhynchus*), and *Scutylenchus* (Dolichodoridae, Tylenchorhynchidae) have vulval membranes with approximately medial vulvas (in Siddiqi, 2000). Vulval membranes in animal-parasitic Trichostrongyloidea are associated with posterior vulvas (in Skrjabin, 1952), whereas in related insect-associated Rhabditida, the 4 species with cuticular membranes have medial vulvas. Vulvae are often anteriorly positioned in parasitic Ascarida, Spirurida, and Bunostominae (Strongylida, Ancylostomoidea) that consistently lack vulval cuticular appendages. In animal-parasitic Oxyuroidea (Oxyurata) in which vulvae may reside in any region of the body, the single instance of a vulval flap was on a posterior vulva (Skrjabin, 1951). In other oxyurids as well as capillariids with protruding vulval folds, the vulva is in the anterior part of the body (in Skrjabin, 1954). Where epitygmata exist in Tylenchida and Rhigonematida, the vulva is slightly posterior to midbody. Although animal parasitic *Strongyloides stercoralis* (Bavay, 1876) Stiles and Hassall, 1902 does not possess the primary vulval appendages, the peri-vulval pits associated with the parasitic female are associated with a more posterior vulva than the free-living form (Speare, 1989).

### Parasitism and ecology

Based on mapping of parasitism onto the small subunit (18S) rDNA phylogenetic tree for nematodes, associations with plants arose independently at least 3 times, and animal parasitism arose at least 6 times (Dorris et al., 1999). When vulval appendages are superimposed onto updated trees of related taxa (Fig. 20, 21 based on Holterman et al., 2006), they seem closely associated with parasitism, phoresis, or commensalism. In some cases, it has not been clearly established that vulval appendages are consistent features of a species because of limited sampling and inability to place specimens in culture. Because some vulval appendages represent inconsistent responses to a host immune challenge, and most are species-level phenomena of parasites, host factors are hypothetical inducers and selectors of those characters that do become fixed. Environmental estrogens in particular

may be involved in fixation of epigenetic characters in vertebrates (Guerrero-Bosagna et al., 2005) and also may be important in invertebrates. Both *Caenorhabditis* and *Panagrellus* have estrogen receptors (Hood et al., 2000). Although bacterial-feeding Rhabditida are not strict parasites, nearly all have dauer larvae, and like other invertebrate symbionts “they face the same transmission problems and other pressures as those acting on parasites” (Poulin, 1998). In Rhabditida, the greatest development of vulval membranes is seen in 2 species with a relatively unique preparasitic adaptation: *Caenorhabditis drosophilae* and *Choriorhabditis dubia* (Rhabditida, Rhabditoidea) have dauer larvae requiring fly contact to mature (Kiontke, 1997). These prominent membranes may have evolved in response to their phoretic associate/facultative host. Host factors modulate the degree of flap size in *Ostertagia ostertagi* (Rhabditida, Trichostrongylidae) (Michel et al., 1972). The capacity of nematode cuticle to expand between molts (Lee, 2002), in contrast to the rigid cuticle and saltational growth of insects (Knight et al., 2002) is well suited to localized expansion in an immune response. Nematode cuticle also facilitates parasitism in its ability to shed and quickly repair the surface coat after immune assault (Blaxter et al., 1992).

*Caenorhabditis* species with the largest vulval membranes have a phoretic association with insects, and those with the smallest are associated with mollusks (Sudhaus and Kiontke, 1996). Besides possible host influence, environmental factors also may be important. Reports of fungi parasitic or commensal with snails are limited (Porter, 1986), whereas insects and plants (Alexopoulos et al., 1996; Blackwell, 2000) have many reported fungal associates. Where vulval appendages are common among aphelenchoidid nematodes, most species are free-living on fungi, aside from their associations with plants or insects (Hunt, 1993). Interference with thigmotaxis, or contact-guidance, of fungi toward host surface vulnerabilities (Gow, 2004) might be one benefit of these appendages toward competing fungi in the environment.

Definitions for specific characters and the taxonomic distribution of vulval appendages could be useful for testing hypotheses of parallelism reflecting developmental constraint, or convergence resulting from adaptation (Yoon and Baum, 2004) such as might occur in nematode–microorganism, host–parasite, or male mating interactions. Details of the genetic and histological basis of vulval morphogenesis continue to accumulate in membrane-bearing *C. elegans* (Sharma-Kishore et al., 1999; Dalpé et al., 2005) and appendage-free *Pristionchus pacificus*

(Kolotuev and Podbilwicz, 2004). With this background, relevant developmental, behavioral, and ecological factors might be evaluated in taxa with vulval appendages for testing hypotheses.

## ACKNOWLEDGMENTS

We thank Donna Ellington and Sharon Ochs of the Nematology Laboratory, and Christopher Pooley, Soybean Genomics and Improvement Lab, USDA–ARS for technical help. Special thanks are extended to Maureen Barr and Paul Sternberg for sharing unpublished visual information on *C. elegans*. Mention of trade names or commercial products in this publication is solely for the purpose of providing specific information and does not imply recommendation or endorsement by the U.S. Department of Agriculture.

## LITERATURE CITED

- Aleshin, V. V., O. S. Kedrova, I. A. Milyutina, N. S. Vladychenskaya, and N. B. Petrov.** 1998. Relationships among nematodes based on the analysis of 18S rRNA gene sequences: molecular evidence for monophyly of chromadorian and secernentean nematodes. *Russian Journal of Nematology* 6:175–184.
- Alexopoulos, C. J., C. W. Mims, and M. Blackwell.** 1996. *Introductory Mycology*, 4th ed. Wiley, New York. 868 pp.
- Anderson, R. V.** 1983. Description of *Distolabrellus veechi* n. gen., n. sp. (Nematoda: Rhabditidae). *Journal of Nematology* 15:70–75.
- Anderson, R. V., and D. J. Hooper.** 1980. Diagnostic value of vagina structure in the taxonomy of *Aphelenchus* Bastian, 1865 (Nematoda: Aphelenchidae) with a description of *A. (Anaphelenchus) isomerus* n. subgen., n. sp. *Canadian Journal of Zoology* 58:924–928.
- Andrássy, I.** 1983. A Taxonomic Review of the Suborder Rhabditina (Nematoda: Secernentia). ORSTOM, Paris, France. 241 pp.
- Barker, D. M.** 1994. Copulatory plugs and paternity assurance in the nematode *Caenorhabditis elegans*. *Animal Behavior* 48:147–156.
- Baujard, P.** 1990. Trois nouvelles espèces de *Bursaphelenchus* (Nematoda: Tylenchida) et remarques sur le genre (Nemata: Hoplolaimidae) *Revue de Nématologie* 3:167–177.
- Baujard, P., P. Castillo, M. Doucet, B. Martiny, D. Mounport, and A. Ndiaye.** 1991a. Variabilité intra- et interspécifique des structures cuticulaires externes dans le genre *Aorolaimus* Sher, 1963 (Nemata: Hoplolaimidae). *Systematic Parasitology* 19:195–213.
- Baujard, P., D. Mounport, and B. Martiny.** 1991b. Study of external cuticular structures in a population of the nematode *Hoplolaimus seinhorsti* (Nemata: Hoplolaimidae). *Afro-Asian Journal of Nematology* 1:19–22.
- Baujard, P., D. Mounport, B. Martiny, and A. Ndiaye.** 1990. Observations en microscopie électronique à balayage sur deux espèces du genre *Scutellonema*

- Andrássy, 1958 (Nemata: Hoplolaimidae). *Revue de Nématologie* 13:351–360.
- Bernard, E. C.** 1984. Hoplolaimoidea (Nematoda: Tylenchida) from the Aleutian islands with descriptions of four new species. *Journal of Nematology* 16:194–203.
- Bird, A. F., and J. Bird.** 1991. *The Structure of Nematodes*. 2nd ed. Academic Press, New York. 316 pp.
- Blackwell, M.** 2000. Terrestrial life—fungal from the start? *Science* 289:1884–1885.
- Blaxter, M. L., P. De Ley, J. R. Garey, L. X. Liu, P. Scheldeman, A. Vierstaete, J. R. Vanfleteren, L. Y. Mackey, M. Dorris, L. M. Frisse, J. T. Vida, and W. K. Thomas.** 1998. A molecular evolutionary framework for the phylum Nematoda. *Nature* 392:71–75.
- Blaxter, M. L., A. P. Page, W. Rudin, and R. M. Maizels.** 1992. The nematode surface coat: actively evading immunity. *Parasitology Today* 8:243–247.
- Blaxter, M. L., and W. M. Robertson.** 1998. The cuticle. Pages 25–48 in R. N. Perry and D. J. Wright, eds. *The Physiology and Biochemistry of Free-Living and Plant-Parasitic Nematodes*. CABI Publishing, St. Albans, U.K. 438 pp.
- Bolker, J. A., and R. A. Raff.** 1996. Developmental genetics and traditional homology. *Bioessays* 18:489–494.
- Braasch, H.** 2001. *Bursaphelenchus* species in conifers in Europe: distribution and morphological relationships. *Bulletin OEPP* 31:127–142.
- Brzeski, M. W.** 1974. Taxonomy of Hemicyclophorinae (Nematoda, Tylenchida). *Zeszyty Problemowe Postepow Nauk Rolniczych* 154:237–330.
- Brzeski, W. M.** 1996. On the genus *Etylenchus* Cobb, 1913 (Nematoda: Tylenchidae). *Nematologica* 42:1–8.
- Brzeski, M. W., Y. E. Choi, and P. A. A. Loof.** 2002a. Compendium of the genus *Criconeimoides* Taylor, 1936 (Nematoda: Criconeimatidae). *Nematology* 4: 325–339.
- Brzeski, M. W., P. A. A. Loof, and Y. E. Choi.** 2002b. Compendium of the genus *Mesocriconeima* Andrássy, 1965 (Nematoda: Criconeimatidae). *Nematology* 4: 341–360.
- Carta, L. K., and W. Osbrink.** 2005. *Rhabditis rainai* n. sp. (Nematoda: Rhabditida) associated with the Formosan subterranean termite, *Coptotermes formosanus* (Isoptera: Rhinotermitidae). *Nematology* 7:863–879.
- Carta, L. K., W. P. Wergin, E. F. Erbe, and C. A. Murphy.** 2003. A comparison of low temperature and ambient temperature SEM for viewing nematode faces. *Journal of Nematology* 35:78–81.
- Caviness, F. E.** 1964. A glossary of nematological terms. The Pacific Printers, Ibadan, Nigeria. 68 pp.
- Ching, H. L.** 1990. Some helminth parasites of dunlin (*Calidris alpina*) and western willet (*Catoptrophorus semipalmatus inornatus*) from California. *Journal of the Helminthological Society of Washington* 57:44–50.
- Chitambar, J. J.** 1991. On the genus *Deladenus* Thorne, 1941 (Nemata: Allantonematidae). Review of the mycetophagous stage. *Revue de Nématologie* 14:427–444.
- Chitwood, B. G.** 1929. Notes on the copulatory sac of *Rhabditis strongyloides* Schneider. *Journal of Parasitology* 15:282–283.
- Chitwood, B. G. and M. B. Chitwood.** 1950. The reproductive system. Pages 136–159 in B. G. Chitwood and M. B. Chitwood, eds. *Introduction to Nematology*. University Park Press, Baltimore, Maryland.
- Coomans, A.** 1977. Evolution as a basis for the systematization of nematodes—a critical review and exposé. *Nematologica* 23:129–136.
- Dalpé, G., L. Brown, and J. G. Culotti.** 2005. Vulva morphogenesis involves attraction of plexin 1-expressing primordial vulva cells to semaphorin 1a sequentially expressed at the vulva midline. *Development* 132:1387–1400.
- Das, K. M., and J. H. Whitlock.** 1960. Subspeciation in *Haemonchus contortus* (Rudolphi, 1803) Nematoda, Trichostrongyloidea. *Cornell Veterinarian* 50:182–197.
- Dasgupta, D. R., D. J. Raski, and S. D. Van Gundy.** 1969. Revision of the genus *Hemicriconemoides* Chitwood and Birchfield, 1957 (Nematoda: Criconeimatidae). *Journal of Nematology* 1:126–145.
- Decraemer, W., E. Karanastasi, D. Brown, and T. Backeljau.** 2003. Review of the ultrastructure of the nematode body cuticle and its phylogenetic interpretation. *Biological Reviews* 78:465–510.
- De Doucet, M. M. A., and M. E. Doucet.** 1990. *Steinernema ritteri* n. sp.: (Nematoda: Steinernematidae) with a key to the species of the genus. *Nematologica* 36:257–265.
- De Grisse, A., and D. Roose.** 1975. The ultrastructure of the vulva region in *Scutellonema cavenessi* Sher, 1963 (Nematoda: Hoplolaimidae). *Mededelingen Rijksfaculteit Landbouwwetenschappen te Gent* 40:501–510.
- De Ley, P.** 1995. Systematics of Rhabditida and Diplogasterida; Anatomy, Key and References. International Nematology Course, University of Ghent, Ghent, Belgium. 73 pp.
- De Ley P., and M. L. Blaxter.** 2002. Systematic position and phylogeny. Pages 1–30 in D. Lee, ed. *The Biology of Nematodes*. Taylor and Francis, London, U.K. 635 pp.
- De Ley, P., and M. Blaxter.** 2004. A new system for Nematoda: combining morphological characters with molecular trees, and translating clades into ranks and taxa. Pages 633–665 in H. Ferris, ed. *Nematology Monographs and Perspectives, Volume 2*. Brill, Leiden, The Netherlands. 866 pp.
- De Ley, P., P. A. A. Loof, and A. Coomans.** 1993. Terrestrial nematodes from the Galápagos Archipelago II: redescription of *Aporcelaimellus obtusicaudatus* (Bastian, 1865) Altherr, 1968, with review of similar species and a nomenclature for the vagina of Dorylaimida (Nematoda). *Biologie* 63:13–34.
- Demeure, Y., C. Netscher, and P. Quénehervé.** 1980. Biology of the plant-parasitic nematode *Scutellonema cavenessi* Sher, 1964: reproduction, development and life cycle. *Revue de Nématologie* 3:213–225.
- Diederich, J., R. Fortuner, and J. Milton.** 2000. A uniform representation for the plan of organisation of nematodes of the order Tylenchida. *Nematology* 2:805–822.
- Digiani, M. C.** 1999. First record of the genus *Syncuria* (Nematoda: Acuariidae) in Argentina, with description of a new species. *Folia Parasitologica* 46:139–144.
- Dolinski, C. M., R. M. Souza, and S. P. Huang.** 1996. *Paratylenchus emmoti* n. sp. (Nemata: Tylenchulidae) found in the 'cerrado' of central Brazil. *Fitopatologia Brasileira* 21:414–417.
- Dorris, M., P. De Ley, and M. L. Blaxter.** 1999. Molecular analysis of nematode diversity and the evolution of parasitism. *Parasitology Today* 15:188–193.

- Dorris, M., M. E. Viney, and M. L. Blaxter.** 2002. Molecular phylogenetic analysis of the genus *Strongyloides* and related nematodes. *International Journal of Parasitology* 32:1507–1517.
- Doucet, M. E.** 1981. Description of *Dolichodoros longicaudatus* n. sp. and *Neodolichodoros leiocephalus* n. sp. (Nematoda: Tylenchida). *Revue de Nématologie* 4: 191–197.
- Doucet, M. E., and S. Filisetti.** 2000. Contribution to the knowledge of *Belonolaimus brevianulata* (Doucet, 1983) Fortuner and Luc, 1987 (Nematoda: Tylenchida). *Journal of Nematode Morphology and Systematics* 3: 39–47.
- Drózdź, J., A. W. Demiaszkiewicz, and J. Lachowicz.** 1998. *Ashworthius sidemi* (Nematoda, Trichostrongylidae) a new parasite of the European bison, *Bison bonasus* (L.) and the question of independence of *A. gagarini*. *Acta Parasitologica* 43:75–80.
- Durette-Desset, M. C., J. P. Hugot, P. Darlu, and A. G. Chabaud.** 1999. A cladistic analysis of the Trichostrongyloidea (Nematoda). *International Journal of Parasitology* 29:1065–1086.
- Elekçioğlu, I. H.** 2000. Diagnostic characteristics of *Plesiorotylenchus striaticeps* Vovlas, Castillo et Lambert, 1993 (Nematoda: Tylenchida) from east Mediterranean region and central Anatolia. *Nematologia Mediterranea* 28:207–212.
- Ebsary, B. A.** 1991. Catalog of the Order Tylenchida (Nematoda). Research Branch, Agriculture Canada, Ottawa, Ontario, Canada. 196 pp.
- Esser, R. P.** 1992. A diagnostic compendium to species included in Paratylenchinae Thorne, 1949 and Tylenchocriconematinae Raski and Siddiqi, 1975 (Nematoda: Criconematoidea). *Nematologica* 38:146–163.
- Esser, R. P., and N. Vovlas.** 1990. A diagnostic compendium to the genus *Hemicriconemoides* (Tylenchida: Criconematidae). *Soil and Crop Science Society of Florida Proceedings* 49:211–219.
- Eveland, L. K., T. Fujino, and B. Tried.** 1990. Scanning electron microscopical observations of *Pellioiditis pellio* (Nematoda: Secernentia). *Transactions of the American Microscopical Society* 109:85–90.
- Farooq, M., and N. Fatema.** 1994. A new species of genus *Scutylenchus* Jairajpuri, 1971 (Nematoda: Merliniinae). *Proceedings of the Pakistan Congress of Zoology* 14: 147–150.
- Fürst von Lieven, A., V. Bärman, and W. Sudhaus.** 2005. How can nematodes mate without spicules? Function of the male gonoduct glands in the roundworm *Myolaimus*. *Zoology* (Jena). 108:211–216.
- Gerber, K., and R. M. Giblin-Davis.** 1990. *Teratorhabditis palmarum* n. sp. (Nematoda: Rhabditidae): an associate of *Rhynchophorus palmarum* and *R. cruentatus*. *Journal of Nematology* 22:337–347.
- Gibbons, L. M.** 1979. Revision of the genus *Haemonchus* Cobb, 1898 (Nematoda: Trichostrongylidae). *Systematic Parasitology* 1:3–24.
- Gibbons, L. M.** 1987. SEM Guide to the Morphology of Nematode Parasites of Vertebrates. Commonwealth Agricultural Bureaux, St. Albans, Buckinghamshire, U.K. 199 pp.
- Giribet, G.** 2003. Molecules, development and fossils in the study of metazoan evolution; Articulata versus Ecdysozoa revisited. *Zoology* 106:303–326.
- Goodey, J. B., and T. Goodey.** 1963. Soil and Freshwater Nematodes, 2nd ed. John Wiley and Sons, New York. 544 pp.
- Gow, N. A. R.** 2004. New angles in mycology: studies in directional growth and directional motility. *Mycological Research* 108:5–13.
- Guerrero-Bosagna, C., P. Sabat, and L. Valladares.** 2005. Environmental signaling and evolutionary change: can exposure of pregnant mammals to environmental estrogens lead to epigenetically induced evolutionary changes in embryos? *Evolution and Development* 7:341–350.
- Haag, E. S., and J. R. True.** 2001. Perspective: from mutants to mechanisms? Assessing the candidate gene paradigm in evolutionary biology. *Evolution* 55:1077–1084.
- Hirschmann, H.** 1971. Comparative Morphology and Anatomy. Pages 11–63 in B. M. Zuckerman, W. F. Mai, and R. A. Rohde, eds. *Plant Parasitic Nematodes*, Volume 1. Academic Press, New York. 345 pp.
- Hoberg, E. P., A. Abrams, R. A. Carreno, and J. R. Lichtenfels.** 2002. *Ashworthius patriciapillitae* n. sp. (Trichostrongyloidea: Haemonchinae) an abomasal nematode in *Odocoileus virginianus* from Costa Rica, and a new record for species of the genus in the Western Hemisphere. *Journal of Parasitology* 88:1187–1199.
- Hoberg, E. P., and J. R. Lichtenfels.** 1994. Phylogenetic systematic analysis of the Trichostrongylidae (Nematoda) with an initial assessment of coevolution and biogeography. *Journal of Parasitology* 80:976–996.
- Hoberg, E. P., J. R. Lichtenfels, and P. A. Piliitt.** 1993a. Affiliation of *Hyostrongylus rubidus* (Nematoda: Trichostrongylidae) with the Ostertagiinae, and evaluation of the synlophe and other structural characters. *Journal of the Helminthological Society of Washington* 60:219–233.
- Hoberg, E. P., J. R. Lichtenfels, and P. A. Piliitt.** 1993b. Comparative morphology of *Ostertagia mossi* and *Ostertagia dikmansii* (Trichostrongylidae) from *Odocoileus virginianus* and comments on other *Ostertagia* spp. from the Cervidae. *Systematic Parasitology* 24: 111–127.
- Hoberg, E. P., J. R. Lichtenfels, and P. A. Piliitt.** 1993c. Synlophe of *Cooperia neitzi* (Trichostrongylidae: Cooperiinae) with comments on vulval inflations and hypertrophy of cuticular ridges among the trichostrongylids. *Journal of the Helminthological Society of Washington* 60:153–161.
- Holovachov, O., and S. Boström.** 2006. Description of *Deleyia* gen. n. with a discussion of its phylogenetic relationships to the genera *Daubaylia* Chitwood & Chitwood, 1934 and *Myolaimus* Cobb, 1920 (Nematoda: Rhabditida). *Nematology* 8:223–233.
- Holterman, M., A. van der Wurff, S. van den Elsen, H. van Megen, T. Bongers, O. Holovachov, J. Bakker, and J. Helder.** 2006. Phylum-wide analysis of SSU rDNA reveals deep phylogenetic relationships among nematodes and accelerated evolution toward crown clades. *Molecular Biology and Evolution* 23:1792–1800.
- Hood, T. E., E. J. Calabrese, and B. M. Zuckerman.** 2000. Detection of an estrogen receptor in two nematode species and inhibition of binding and

- development by environmental chemicals. *Ecotoxicology and Environmental Safety* 47:74–81.
- Hope, W. D.** 1974. Nematoda. Pages 391–469 in A. C. Giese and J. S. Pearse, eds. *Reproduction of Marine Invertebrates*. Academic Press, New York. 546 pp.
- Hunt, D. J.** 1993. Aphelenchida, Longidoridae and Trichodoridae: Their Systematics and Bionomics. CAB International, St. Albans, U.K. 352 pp.
- Hunt, D. J.** 2001. The African Carnoyidae (Nematoda: Rhigonematida). 1. *Brumptaemilius brevispiculus* sp. n. from Ghana with observations on copulatory plugs and spermatophore development. *Nematology* 3:313–323.
- Jairajpuri, M. S., and M. J. Azmi.** 1977. Reproductive behavior of *Acrobeloides* sp. *Nematologica* 23:202–212.
- Jairajpuri, M. S., and D. J. Hunt.** 1984. The taxonomy of Tylenchorhynchinae (Nematoda: Tylenchida) with longitudinal lines and ridges. *Systematic Parasitology* 6:261–268.
- Justine, J.-L.** 1992. Une nouvelle espèce de nématode Capillariinae parasite de sorciés (Mammalia, Insectivora) au Népal. *Annales de Parasitologie Humaine et Comparée* 67:9–18.
- Kalia, D. C., and N. K. Gupta.** 1984. On two new species of *Skirjabinocapillaria* Skarbilovitsch, 1946, from Micro-Chiroptera, with a key to species of the genus. *Rivista Parassitologia* 1:125–132.
- Khera, S.** 1969. Nematodes from the banks of still and running waters. VI. Rhabditida from sewer. *Journal of Helminthology* 43:347–363.
- Kiontke, K.** 1997. Description of *Rhabditis (Caenorhabditis) drosophilae* n. sp. and *R. (C.) sonorae* n. sp. (Nematoda: Rhabditida) from saguaro cactus rot in Arizona. *Fundamental and applied Nematology* 20: 305–315.
- Kiontke, K., A. Barrière, I. Kolotuve, B. Podbilewicz, R. Sommer, D. H. A. Fitch, and M. A. Félix.** 2007. Trends, stasis, and drift in the evolution of nematode vulva development. *Current Biology* 17:1925–1937.
- Knight, C. G., M. N. Patel, R. B. R. Azevedo, and A. M. Leroi.** 2002. A novel mode of ecdysozoan growth in *Caenorhabditis elegans*. *Evolution and Development* 4:16–27.
- Kolotuev, I., and B. Podbilewicz.** 2004. *Pristionchus pacificus* vulva formation: polarized division, cell migration, cell fusion, and evolution of invagination. *Developmental Biology* 266:322–333.
- Lanfredi, R. M., W. De Souza, and D. C. Gomes.** 1995. Comparative study of four species of *Trichuris* Roederer, 1761 (Nematoda, Trichurinae) by scanning electron microscopy. *Memórias do Instituto Oswaldo Cruz, Rio de Janeiro* 90:489–496.
- Lee, D. L.** 2002. Cuticle, moulting and exsheathment. Pages 171–209 in D. Lee, ed. *The Biology of Nematodes*. Taylor and Francis, London, U.K. 648 pp.
- Lichtenfels, J. R., P. A. Pilitt, L. M. Gibbons, and J. D. F. Boomker.** 2001. *Haemonchus horaki* n. sp. (nematode: Trichostrongyloidea) from grey rhebuck *Pelea capreolus* in South Africa. *Journal of Parasitology* 87:1095–1103.
- Lichtenfels, J. R., P. A. Pilitt, and E. P. Hoberg.** 1994. New morphological characters for identifying individual specimens of *Haemonchus* spp. (Nematoda: Trichostrongyloidea) and a key to species in ruminants of North America. *Journal of Parasitology* 80: 107–119.
- Lorenzen, S.** 1994. The phylogenetic systematics of free-living nematodes. The Ray Society, London, U.K. 383 pp.
- Maddison, W. P., and D. R. Maddison.** 1992. MacClade: analysis of phylogeny and character evolution, version 3.05. Sinauer Associates, Sunderland, Massachusetts.
- Maggenti, A.** 1981. *General Nematology*. Springer Verlag, New York. 372 pp.
- Malakhov, V. V.** 1994. Nematodes. D. Hope, ed. *Structure, Development, Classification and Phylogeny*. Smithsonian Institution Press, Washington, D.C. 286 pp.
- Mekete, R., R. A. Sikora, S. Kiewnick, and J. Hallman.** 2008. Description of plant parasitic nematodes associated with coffee in Ethiopia. *Nematologia Mediterranea* 36:69–77.
- Meldal, B. H., N. J. Debenham., P. De Ley, I. T. De Ley, J. R. Vanfleteren, A. R. Vierstraete, W. Bert, G. Borgonie, T. Moens, P. A. Tyler, M. C. Austen, M. L. Blaxter, A. D. Rogers, and P. D. Lamshead.** 2007. A molecular phylogeny of the Nematoda with specific emphasis on the relationships of marine taxa. *Molecular Phylogenetics and Evolution* 42:622–636.
- Michel, J. F., M. B. Lancaster, and C. Hong.** 1972. The development and symmetry of the vulval flap of *Ostertagia ostertagi*. *Journal of Parasitology* 2:297–304.
- Michel, J. F., and I. J. Sinclair.** 1969. The effect of cortisone on the worm burdens of calves infected daily with *Ostertagia ostertagi*. *Parasitology* 59:691–708.
- Mounport, D., S. Bostrom, and C. Villenave.** 2002. Description of *Cervidellus baujardi* n. sp. (Nematoda: Cephalobidae) from Senegal. *Journal of Nematode Morphology and Systematics* 4:111–117.
- Nickle, W. R.** 1970. A taxonomic review of the genera of the Aphelenchoidea (Fuchs, 1937) Thorne, 1949 (Nematoda: Tylenchida). *Journal of Nematology* 2:375–392.
- Nickle, W. R.** 1972. A contribution to our knowledge of the Mermithidae (Nematoda). *Journal of Nematology* 4: 113–146.
- Nickle, W. R., A. M. Golden, Y. Mamiya, and W. P. Wergin.** 1981. On the taxonomy and morphology of the pine wood nematode, *Bursaphelenchus xylophilus* (Steiner and Bührer, 1934) Nickle 1970. *Journal of Nematology* 13:385–392.
- Platt, H. M., and R. M. Warwick.** 1983. Free living marine nematodes. Part 1: British enoplids. Pictorial key to world genera and notes for the identification of British species. *Synopses of the British Fauna*, No. 28. D. M. Kermack and R. S. K. Barnes, eds. Cambridge University Press, Cambridge, U.K. 307 pp.
- Platt, H. M., and R. M. Warwick.** 1988. Free living marine nematodes. Part II: British chromadorids. *Synopses of the British Fauna*, No. 38. D. M. Kermack and R. S. K. Barnes, eds. E. J. Brill/Dr. W. Backhuys, New York. 502 pp.
- Poinar, G. O.** 1975a. Description and biology of a new insect parasitic rhabditoid, *Heterorhabditis bacteriophora* n. gen., n. sp., (Rhabditida: Heterorhabditidae n. fam.). *Nematologica* 21:463–470.
- Poinar, G. O.** 1975b. *Entomogenous Nematodes, A Manual and Host List of Insect-Nematode Associations*. E. J. Brill, Leiden, The Netherlands. 317 pp.



- Poinar, G. O., T. A. Jackson, N. A. Bell, and M. B. Wahid.** 2002. *Elaeolenchus parthenonema* n. g., n. sp. (Nematoda: Sphaerularioidea: Anandranematidae n. fam.) parasitic in the palm-pollinating weevil *Elaeidobius kamerunicus* Faust, with a phylogenetic synopsis of the Sphaerularioidea Lubbock, 1861. *Systematic Parasitology* 51:219–225.
- Porter, D.** 1986. Mycoses of marine organisms: an overview of pathogenic fungi. Pages 141–153 in S. T. Moss, ed. *Biology of Marine Fungi*. Cambridge University Press, New York. 382 pp.
- Poulin, R.** 1998. *Evolutionary Ecology of Parasites*. Chapman and Hall, New York. 212 pp.
- Raski, D. J.** 1975a. Revision of the genus *Paratylenchus* Micoletzky, 1922 and descriptions of new species. Part I of 3 parts. *Journal of Nematology* 7:15–34.
- Raski, D. J.** 1975b. Revision of the genus *Paratylenchus* Micoletzky, 1922, and descriptions of new species. Part II of 3 parts. *Journal of Nematology* 7:274–295.
- Raski, D. J., P. K. Koshy, and V. K. Sosamma.** 1982. A revision of the subfamily Ephyadophorinae Skarbilovich, 1959 (Tylenchida: Nematoda). *Revue de Nématologie* 5:119–138.
- Sanwal, K. C.** 1959. *Cuticonema vivipara* n. g. n. sp. a new saphrophagous nematode of the subfamily Panagrolaiminae Thorne, 1937, from Canada, with a note on the genus *Brevibucca* Goodey, 1935. *Canadian Journal of Zoology* 37:223–229.
- Sarr, E., A. Coomans, and M. Luc.** 1987. Development and life cycle of *Neodolichodoros rostrulatus* (Siddiqi, 1976) with observations on the copulatory plug (Nematoda: Tylenchida). *Revue de Nématologie* 10: 87–92.
- Sauer, M. R.** 1965. *Morulaimus*, a new genus of the Belonolaiminae. *Nematologica* 11:609–618.
- Schneider, A.** 1866. *Monographie der Nematoden*. G. Reimer, Berlin, Germany. 357 pp.
- Shahina, F., D. J. Hunt, and M. R. Siddiqi.** 1996. Three new species of *Aulolaimus* de Man (Chromadorida: Aulolaimidae). *Afro-Asian Journal of Nematology* 6: 78–84.
- Shahina, F., and M. A. Maqbool.** 1992. Description of *Deladenus pakistanensis* n. sp., (Nematoda: Tylenchida) from Pakistan. *Pakistan Journal of Nematology* 10: 1–6.
- Sharma-Kishore, R., J. G. White, E. Southgate, and B. Podbilewicz.** 1999. Formation of the vulva in *Caenorhabditis elegans*: a paradigm for organogenesis. *Development* 126:691–699.
- Sher, S. A.** 1963. Revision of the Hoplolaiminae (Nematoda) II. *Hoplolaimus* Daday, 1905 and *Aorolaimus* n. gen. *Nematologica* 9:267–295.
- Siddiqi, M. R.** 1980. Six new species of *Coslenchus* Siddiqi, 1978 (Nematoda: Tylenchida). *Nematologica* 26:432–447.
- Siddiqi, M. R.** 2000. *Tylenchida, Parasites of Plants and Insects*, 2nd ed. Commonwealth Agricultural Bureaux Publishing, New York. 833 pp.
- Siddiqi, M. R., and J. M. Lenne.** 1984. *Pterotylenchus cecidogenus* n. gen., n. sp., a new stem-gall nematode parasitizing *Desmodium ovalifolium* in Colombia. *Journal of Nematology* 16:62–65.
- Skrjabin, K. I.** 1949. Key to Parasitic Nematodes. Volume 1. Spirurata and Filariata. Academy of Sciences of the U.S.S.R., St. Petersburg. Translated from Russian for the U.S. National Science Foundation and Department of Agriculture by the Israel Program for Scientific Translations. 1968. Office of Technical Services, U.S. Department of Commerce, Washington, D.C. 497 pp.
- Skrjabin, K. I.** 1951. Key to Parasitic Nematodes. Volume 2. Oxyurata and Ascaridata. Academy of Sciences of the U.S.S.R., St. Petersburg. Translated from Russian for the U.S. National Science Foundation and Department of Agriculture by the Amerind Publishing Co., New Delhi, India. 1982. Office of Technical Services, U.S. Department of Commerce, Washington, D.C. 703 pp.
- Skrjabin, K. I.** 1952. Key to parasitic nematodes, Volume 3. Strongylata. Academy of Sciences of the U.S.S.R., St. Petersburg. Translated from Russian for the U.S. National Science Foundation and Department of Agriculture by the Israel Program for Scientific Translations. 1961. Office of Technical Services, U.S. Department of Commerce, Washington, D.C. 890 pp.
- Skrjabin, K. I.** 1954. Key to Parasitic Nematodes. Volume 4. Camallanata, Rhabditata, Tylenchata, Trichocephalata, Dioctophymata, and Distribution of parasitic nematodes in different hosts. Academy of Sciences of the U.S.S.R., St. Petersburg. Translated from Russian for the U.S. National Science Foundation and Department of Agriculture by the Amerind Publishing Co., New Delhi, India. 1984. Office of Technical Services, U.S. Department of Commerce, Washington, D.C. 1097 pp.
- Smythe, A. B., M. J. Sanderson, and S. A. Nadler.** 2006. Nematode small subunit phylogeny correlates with alignment parameters. *Systematic Biology* 55:972–992.
- Southey, J. F.** 1986. *Laboratory Methods for Work with Plant and Soil Nematodes*. Her Majesty's Stationery Office, London, U.K. 202 pp.
- Speare, R.** 1989. Identification of species of *Strongyloides*. Pages 11–82 in D. I. Grove, ed. *Strongyloidiasis: An Important Roundworm Infection of Man*. Taylor and Francis, London, U.K. 336 pp.
- Steiner, G.** 1929. On the gross morphology of *Acrobeles* (*Acrobeles*) *crossotus* n. sp. (Rhabditidae, Nematodes) found in diseased bulbs of *Iris tingitana* Boiss. and Reut. with remarks on its ecology and life cycle. *Zeitschrift für Morphologie und Ökologie der Tiere* Bd. 15:36–558.
- Stock, S. P., J. F. Campbell, and S. A. Nadler.** 2001. Phylogeny of *Steinernema* Travassos, 1927 (Cephalobina: Steinernematidae) inferred from ribosomal DNA sequences and morphological characters. *Journal of Parasitology* 87:877–889.
- Sudhaus, W., and D. Fitch.** 2001. Comparative studies on the phylogeny and systematics of the Rhabditidae (Nematoda). *Journal of Nematology* 33:1–70.
- Sudhaus, W., and D. J. Hooper.** 1994. *Rhabditis* (*Oscheius*) *guentheri* sp. n. an unusual species with reduced posterior ovary, with observations on the *Dolichura* and *Insectivora* groups (Nematoda: Rhabditidae). *Nematologica* 40:508–533.
- Sudhaus, W., and K. Kiontke.** 1996. Phylogeny of *Rhabditis* subgenus *Caenorhabditis* (Rhabditidae,

- Nematoda). *Journal of Zoological, Systematic and Evolutionary Research* 34:217–233.
- Sudhaus, W., and R. Kühne.** 1989. Nematodes associated with Psychodidae: description of *Rhabditis berolina* sp. n. and redescription of *R. dubia* Bovien, 1937 (Nematoda: Rhabditidae), with biological and ecological notes, and a phylogenetic discussion. *Nematologica* 35:305–320.
- Thorne, G., and R. B. Malek.** 1968. Nematodes of the Northern Great Plains, Part I, Tylenchida (Nemata: Secernentea). Technical Bulletin 31, Agricultural Experiment Station, South Dakota State University, Brookings, South Dakota. 111 pp.
- Vershelde, D., and M. Vincx.** 1994. Epsilonematidae (Nematoda: Desmodoroidea) from the east African coast, with a discussion on the external morphology of cuticular appendages. *Nematologica* 40:78–105.
- Viney, M., R. W. Ashford, and G. Barnish.** 1991. A taxonomic study of *Strongyloides* Grassi, 1879 (Nematoda) with special reference for *Strongyloides full-eborni* von Linstow, 1905 in man in Papua New Guinea and the description of a new subspecies. *Systematic Parasitology* 18:95–109.
- Vincx, M.** 1983. Redescription and ontogeny study of *Desmodora schulzi* Gerlach, 1950. *Biologische Jaarboek, Dodonea* 51:171–179.
- Wagner, G., and K.-A. Seitz.** 1983. Funktionsmorphologische Untersuchungen an Vagina, Vulva, Vulvapfropf und vulva-assoziiierter Hypodermis bei *Pelodera strongyloides* (Nematoda, Rhabditidae). *Nematologica* 29:190–202.
- Warwick, R. M., H. M. Platt, and P. J. Somerfield.** 1998. Free living marine nematodes. Part III: British monhysterids. Synopses of the British Fauna, No. 53 in D. M. Kermack and R. S. K. Barnes, eds. Field Studies Council, Shrewsbury, Shropshire, U.K. 296 pp.
- Wergin, W. P., R. M. Sayre, and E. F. Erbe.** 1993. Use of low temperature scanning electron microscopy to observe frozen hydrated specimens of nematodes. *Journal of Nematology* 25:214–226.
- White, J.** 1988. The Anatomy. Pages 81–122 in W. B. Wood, ed. *The nematode C. elegans*. Cold Spring Harbor Laboratory Press, New York. 667 pp.
- Whitlock, J. H. and L. F. Le Jambre.** 1981. On the taxonomic analysis of the genus *Haemonchus* Cobb, 1898. *Systematic Parasitology* 3:7–12.
- Wilkes, C. P., F. J. Thompson, M. P. Gardner, S. Paterson, and M. E. Viney.** 2004. The effect of the host immune response on the parasitic nematode *Strongyloides ratti*. *Parasitology* 128:661–669.
- Wright, K. A.** 1975. Cuticular inflations in whipworms, *Trichuris* spp. *International Journal for Parasitology* 5:461–463.
- Yin, K., Y. Fang, and A. C. Tarjan.** 1988. A key to species in the genus *Bursaphelenchus* with a description of *Bursaphelenchus hunanensis* sp. n. (Nematoda: Aphelenchoididae) found in pine wood in Hunan Province, China. *Proceedings of the Helminthological Society of Washington*. 55:1–11.
- Yoon, H.-S., and D. A. Baum.** 2004. Transgenic study of parallelism in plant morphological evolution. *Proceedings of the National Academy of Sciences U.S.A.* 101:6524–6529.
- Zarina, B., and M. A. Maqbool.** 1998. Descriptions and observations on two new and two known species of the genus *Pratylenchus* Filipjev, 1936 (Nematoda: Pratylenchidae) from Pakistan. *Pakistan Journal of Nematology* 16:13–24.
- Zhang, L., D. R. Brooks, and D. Causey.** 2003. A new species of *Syncuaria* Gilbert, 1927 (Nematoda: Acuarioidae) in the wood stork, *Mycteria americana* L. (Aves: Ciconiiformes: Ciconiidae) from the area de Conservacion Guanacaste, Costa Rica. *Journal of Parasitology* 89:1034–1038.

## APPENDIX 1

### Supplemental listing of vulval appendages represented on Figs. 20 and 21; vulval flap (f), vulval membrane (m), epiptygma (e)

#### Adenophorea

**Mermithida**, m: *Tunicamermis melolonthae* Schuurmans Stekhoven, Mason and Couturier, 1955 “lèvre en forme d'éventail” f: *Amphimermis*, *Diximermis*, *Hydromermis*, *Lanceimermis*, *Limnomermis*

**Trichocephalida**, m: “lateral alate membranes” *Capillaria bursata* Freitas and Almeida, 1934 (after Skrjavin, 1984 after Gagarin, 1952)

**Enoplida**, e: *Deontostoma californicum* (Hope, 1974)

**Desmodorida**, f-e: *Epsilonema espeeli* Verschelde and Vincx, 1994 -moderately post vulva, 1 testis

**Chromadorida**, m: *Aulolaimus filicaudatus* (Timm, 1957) Jairajpuri and Hooper, 1968, in Shahina, Hunt and Siddiqi, 1996 (V = 37), not parasitic or obviously commensal

**Monhysterida**, f-e: *Diplolaimella dievengatensis* Jacobs, Van de Velde, Geraert and Vranken, 1990, “flap,” (the order has some commensal species)

#### Secernentea

**Oxyurida**, f: *Avilandros avis* Maplestone, 1940

**Rhigonematida**, e: *Rhigonema* Cobb, 1898

**Tylenchida**, m: *Deladenus pakistanensis* Shahina and Maqbool, 1992, *Coslenchus* (Siddiqi, 1980), *Cephalenchus* (Siddiqi, 2000), and *Pterotylenchus* (prominent) (Siddiqi and Lenne, 1984); *Neodolichorhynchus* (*Mulkorhynchus*) *phaseoli* (Sethi and Swarup, 1968) Talavera and Tobar, 1997, *Scutylenchus fici* Farooq and Fatema, 1994 (Farooq and Fatema, 1994); *Belonolaimus* synonym: *Ibipora jara* Monteiro and Lordello, 1977, *I. anama* Monteiro and Lordello, 1977, *I. lineatus* (Román, 1964) Monteiro and Lordello

*Helicotylenchus limatus* Siddiqi, 1995 (*Paratylenchus* spp., *Hemicriconemoides* spp., *Pratylenchus roseus* Zarina and Maqbool, 1998

f: *Ecphyadophora espeeli*; *Elaeolenchus parthenonema* Poinar, Jackson, Bell and Wahid, 2002

e: small - *Histotylenchus histoides* Siddiqi, 1971, *Morulaimus arenicolus* Sauer, 1966; *Neodolichodorus obtusus* (Allen, 1957) Andrassy, 1976; *Tylenchorhynchus tuberosus* Zarina and Maqbool, 1994; *Merlinius* spp., *Scutylenchus fici*; large - *Hoplolaimus seinhorsti* Sher, 1963; some *Peltami-gratus* spp. and *Scutellonema* spp., *Plesiorotylenchus striaticeps* Elekçioğlu, 2000

**Aphelenchida, Aphelenchoideoidea**, f-e: *Aphelenchoides vigor* Thorne & Malek, 1968, *Bursaphelenchus* (one third of species), *Laimaphelenchus* (many), *Rhadinaphelenchus cocophilus* (Cobb,

1919) J. B. Goodey, 1960 (Hunt, 1993), *Seinura* (many) (Massey, 1974)

**Steinernematida**, e: *Steinernema* (some)

**Rhabditida-Panagrolaimidae**, m: *Cuticonema vivipara* Sanwal, 1959

**Rhabditida-Rhabditoidea**, m: small in *Oscheius guentheri*, *Caenorhabditis elegans*, larger in *Caenorhabditis sonore*, very large in *C. drosophilae* and *Choriorhabditis dubia* Bovien, 1937 and perhaps *Operculorhabditis longispiculosa* Khera, 1969

**Strongylida**. f: *Ostertagia*, *Haemonchus*, *Para-cooperia* spp.; Inflation (irregular): *Longiostrongylus*, *Mazamastrongylus*, *Cameloststrongylus* m: *Cooperia* spp. (3 in Hoberg et al., 1993), *Allintoshius nycticeius* Chitwood, 1937

**Paratylenchus**

**APPENDIX 2**  
**Membrane size and vulval position after Esser (1992), p. 12**

<i>Paratylenchus (Paratylenchus)</i>	V%
Anterior, no membrane	
<i>P. (P). aciculus</i> Brown 1959	68–74
<i>P. (P). acti</i> Eroshenko, 1978	69–73
<i>P. (P). aculentus</i> Brown 1959	71–73
<i>P. (P). costatus</i> (Raski, 1976) Siddiqi, 1986	68–72
<i>P. (P). laocaiensis</i> Nguyen et al., 2004	65–67
<i>P. (P). minisculus</i> Tarjan, 1960	69–81
<i>P. (P). macrodorus</i> Brzeski, 1963	74–81
<i>P. (P). pandatus</i> Raski, 1976	70–78
<i>P. (P). steineri</i> Golden, 1961	75–78
Intermediate, small membranes	
<i>P. (P). corbetti</i> (Ganguly and Khan, 1990) Brzeski, 1998 75–81 m not prominent	
<i>P. (P). discocephalus</i> Siddiqi, Khan and Ganguly, 1990 73–80 m indistinct	
Posterior, large membranes	
<i>P. (P). arcuatus</i> Luc and de Guiran, 1962	78–84
<i>P. (P). dianthus</i> Jenkins and Taylor, 1956	80–88 m large, 4–6 annules
<i>P. (P). elachistus</i> Steiner, 1949	82–87
<i>P. (P). flectospiculus</i> Huang and Raski, 1987	81–86
<i>P. (P). holdemani</i> Raski, 1975	84–86
<i>P. (P). microdorus</i> Andrásy, 1959	79–86
<i>P. (P). perlatus</i> Raski, 1975	79–86
<i>P. (P.) projectus</i> Jenkins, 1956	83–87
<i>Paratylenchus (Gracilacus)</i>	
Anterior	
<i>P. (G). capitatus</i> (Adams and Eichenmuller, 1962) Siddiqi and Goodey, 1964	
<i>P. (G). costata</i> Raski, 1986	67–72
<i>P. (G). elegans</i> Raski, 1962	70–74
<i>P. (G). idalima</i> Raski, 1962	71–76
<i>P. (G). latescens</i> Huang and Raski, 1986	68–73
<i>P. (G). marylandica</i> (Jenkins, 1960) Raski, 1962	71–79
<i>P. (G). oostenbrinki</i> Misra and Edwards, 1971	70–73
<i>P. (G). raskii</i> Phukan and Sanwal, 1979	70–74
Posterior	
<i>P. (G). epacris</i> Raski, 1962	82–87
<i>P. (G). mirus</i> Raski, 1962	80–86
<i>P. (G). robusta</i> (Wu, 1974) Raski, 1976	81–85