

University of Nebraska - Lincoln

DigitalCommons@University of Nebraska - Lincoln

---

Insecta Mundi

Center for Systematic Entomology, Gainesville,  
Florida

---

1-2010

***Micropsephodes bahamaensis*, a new species of Anamorphinae  
(Coleoptera: Cucujoidea: Endomychidae) from the Bahamas, with  
a key to the New World genera of Anamorphinae**

Floyd W. Shockley  
University of Georgia, fws@uga.edu

Follow this and additional works at: <https://digitalcommons.unl.edu/insectamundi>



Part of the [Entomology Commons](#)

---

Shockley, Floyd W., "*Micropsephodes bahamaensis*, a new species of Anamorphinae (Coleoptera: Cucujoidea: Endomychidae) from the Bahamas, with a key to the New World genera of Anamorphinae" (2010). *Insecta Mundi*. 636.

<https://digitalcommons.unl.edu/insectamundi/636>

This Article is brought to you for free and open access by the Center for Systematic Entomology, Gainesville, Florida at DigitalCommons@University of Nebraska - Lincoln. It has been accepted for inclusion in Insecta Mundi by an authorized administrator of DigitalCommons@University of Nebraska - Lincoln.

# INSECTA MUNDI

A Journal of World Insect Systematics

---

0112

*Micropsephodes bahamaensis*, a new species of Anamorphinae  
(Coleoptera: Cucujoidea: Endomychidae) from the Bahamas, with a  
key to the New World genera of Anamorphinae

Floyd W. Shockley  
Department of Entomology  
413 Biological Sciences Building  
University of Georgia  
Athens, GA 30602-2603 USA

Date of Issue: January 22, 2010

Floyd W. Shockley

*Micropsephodes bahamaensis*, a new species of Anamorphinae

(Coleoptera: Cucujoidea: Endomychidae) from the Bahamas, with a key to the New World genera of Anamorphinae

Insecta Mundi 0112: 1-11

**Published in 2010 by**

Center for Systematic Entomology, Inc.

P. O. Box 141874

Gainesville, FL 32614-1874 U. S. A.

<http://www.centerforsystematicentomology.org/>

**Insecta Mundi** is a journal primarily devoted to insect systematics, but articles can be published on any non-marine arthropod taxon. Manuscripts considered for publication include, but are not limited to, systematic or taxonomic studies, revisions, nomenclatural changes, faunal studies, book reviews, phylogenetic analyses, biological or behavioral studies, etc. **Insecta Mundi** is widely distributed, and referenced or abstracted by several sources including the Zoological Record, CAB Abstracts, etc.

As of 2007, **Insecta Mundi** is published irregularly throughout the year, not as quarterly issues. As manuscripts are completed they are published and given an individual number. Manuscripts must be peer reviewed prior to submission, after which they are again reviewed by the editorial board to insure quality. One author of each submitted manuscript must be a current member of the Center for Systematic Entomology.

**Managing editor:** Paul E. Skelley, e-mail: [insectamundi@gmail.com](mailto:insectamundi@gmail.com)

**Production editor:** Michael C. Thomas, e-mail: [insectamundi@gmail.com](mailto:insectamundi@gmail.com)

**Editorial board:** J. H. Frank, M. J. Paulsen

**Subject editors:** J. Eger, A. Rasmussen, F. Shockley, G. Steck, A. Van Pelt, J. Zaspel

**Printed copies deposited in libraries of:**

CSIRO, Canberra, ACT, Australia

Museu de Zoologia, São Paulo, Brazil

Agriculture and Agrifood Canada, Ottawa, Ontario, Canada

The Natural History Museum, London, England

Muzeum i Instytut Zoologii Pan, Warsaw, Poland

National Taiwan University, Taipei, Taiwan

California Academy of Sciences, San Francisco, CA, USA

Florida Department of Agriculture and Consumer Services, Gainesville, FL, USA

Field Museum of Natural History, Chicago, IL, USA

National Museum of Natural History, Smithsonian Institution, Washington, DC, USA

**Electronic copies in PDF format:**

Printed CD mailed to all members at end of year.

Florida Center for Library Automation: <http://purl.fcla.edu/fcla/insectamundi>

University of Nebraska-Lincoln, Digital Commons: <http://digitalcommons.unl.edu/insectamundi/>

**Author instructions** available on the Insecta Mundi page at:

<http://www.centerforsystematicentomology.org/insectamundi/>

Printed Copy ISSN 0749-6737

On-Line ISSN 1942-1354

CD-ROM ISSN 1942-1362

*Micropsephodes bahamaensis*, a new species of Anamorphinae  
(Coleoptera: Cucujoidea: Endomychidae) from the Bahamas, with a  
key to the New World genera of Anamorphinae

Floyd W. Shockley

Department of Entomology  
413 Biological Sciences Building  
University of Georgia  
Athens, GA 30602-2603 USA  
fws@uga.edu

**Abstract.** A new species of anamorphine endomychid, *Micropsephodes bahamaensis* Shockley is described from a small series of 3 specimens collected on North Andros Island in the Bahamas. Besides being the only species known from the Bahamas, *M. bahamaensis* is readily recognizable from its congeners based on its much larger size, more elongate habitus and features of the galeae and maxillary palpomere IV. Keys to the known species of *Micropsephodes* and to the adults of the genera of Anamorphinae that occur in the Western Hemisphere are provided.

**Key Words.** Endomychidae, Anamorphinae, *Micropsephodes*, the Bahamas, new species, key

### Introduction

Anamorphinae Strohecker is a relatively well-defined subfamily of small, round, coccinellid-like beetles in the family Endomychidae Leach. The subfamily is relatively large, including approximately 174 species in 37 genera worldwide. In the New World, Anamorphinae is represented by 54 species divided among 13 genera. The biology of anamorphine species is poorly known, but they are believed to be obligate fungal spore feeders as both adults and larvae (Pakaluk 1986, Leschen and Carlton 1993). The morphology of the larvae of Anamorphinae was recently reviewed by Shockley and Tomaszewska (2007).

Champion (1913) described the genus *Micropsephodes* Champion for a new species of round, glabrous endomychid from Guatemala, *M. serraticornis* Champion (Fig. 3). Blackwelder (1945) listed only the type locality for the distribution of this species. Strohecker (1953) updated the generic description of Champion, but included no new distributional records for *M. serraticornis*. Leschen and Carlton (2000) re-described the type specimen of *M. serraticornis* while describing *M. lundgreni* Leschen and Carlton, an endemic species from the southeastern United States (Fig. 4). However, their redescription was primarily diagnostic to better aid in the comparison of the two species.

As part of a family-level phylogenetic analysis of Endomychidae, Tomaszewska (2000) thoroughly re-described and illustrated the morphology of *Micropsephodes*. She justifiably expanded the range of the genus to include the Dominican Republic, but the DR specimens examined in that study were probably not *M. serraticornis* (M. Ivie, pers. comm.) based on comparison of other specimens from the series with the type. However, without examining the actual specimen(s) dissected and described by Tomaszewska, I am hesitant to erect a new name for that species at this time. Whether the Dominican Republic species examined by Tomaszewska was the same as that referred to in Leschen and Carlton (2000) remains unclear. No new *Micropsephodes* have been described since Leschen and Carlton (2000). Immature stages for *Micropsephodes* are unknown.

*Micropsephodes* is readily recognizable from other similar anamorphine genera based on the combination of the following features: 8-segmented antennae with a 3-segmented serrate club, pronotum lacking sulci or carinae; posterior margin of the pronotum medially-lobed, and 3-segmented tarsi with simple tarsal claws; dorsally glabrous, shiny often with a metallic sheen.

### Material and Methods

Three female specimens of a new *Micropsephodes* species were collected at Forfar Biological Station (Lat: 24°53'52"N, Long: 77°55'53"W; elev. 1m) on North Andros Island in the Bahamas (Fig. 1). These are the same specimens reported by Turnbow and Thomas (2008) as "*Micropsephodes* n. sp." Initial observa-

tions were made using a Leica Wild MZ8 stereo microscope. One specimen was disarticulated and placed in glycerine on slides for further study. Illustrations were made from this prepared specimen using a Leitz DMRB compound microscope. The dorsal and lateral habitus images were produced using a Canon EOS-1DS digital camera attached to an ML-1000 Digital Imaging System (Microptics, Inc., Ashland, VA). Specimens used in this study are deposited in the following collections: Florida State Collection of Arthropods (FSCA), Floyd W. Shockley Research Collection (FWSC), and Robert H. Turnbow Collection (RHTC).

### Key to the New World genera of Anamorphinae

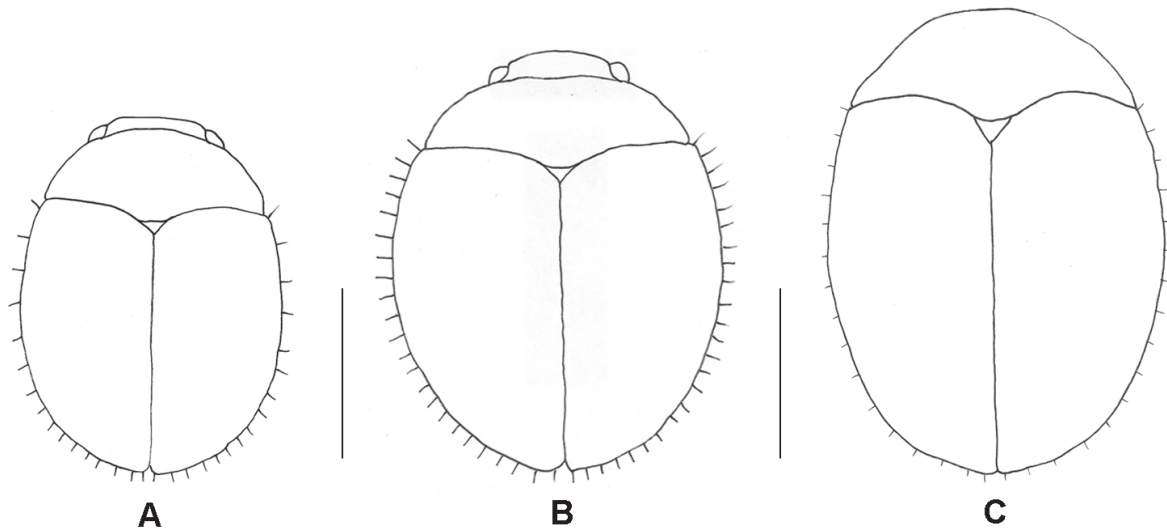
1. Elytra with broad, explanate margins; fossil in Dominican amber .... *Discolomopsis* Shockley  
— Elytra without broad, explanate margins; not fossilized ..... 2
- 2(1). Procoxal cavities open externally ..... 3  
— Procoxal cavities closed externally ..... *Acritosoma* Pakaluk and Slipinski
- 3(2). Posterior margin of pronotum distinctly lobed medially ..... 4  
— Posterior margin of pronotum truncate or weakly bisinuate ..... 11
- 4(3). Tarsal claw with a sharp internal tooth ventrally ..... 5  
— Tarsal claw simple or at most expanded basally ..... 7
- 5(4). Pronotum with conspicuous lateral sulci, although sometimes faint ..... 6  
— Pronotum lacking lateral sulci entirely ..... *Rhymbomicrus* Casey
- 6(5). Lateral sulci connected by a fine transverse stria near middle of pronotal disc; antennae 9- or 10-  
segmented ..... *Anamorphus* LeConte  
— Lateral sulci not connected; antennae 11-segmented ..... *Micropsephus* Gorham
- 7(4). Pronotum with lateral carinae connecting with lateral sulci externally and reaching the front  
margin ..... *Austroclermus* Strohecker  
— Pronotum without lateral carinae ..... 8
- 8(7). Pronotum with distinct lateral sulci ..... *Bystus* Guérin-Méneville  
— Pronotum lacking lateral sulci ..... 9
- 9(8). Antennal club serrate ..... *Micropsephodes* Champion  
— Antennal club not serrate ..... 10
- 10(9). Tarsi 4-4-4; antennae 11-segmented ..... *Catapotia* Thomson  
— Tarsi 3-3-3; antennae 9-segmented ..... *Dialexia* Gorham
- 11(3). Pronotum with lateral carinae extending to anterior margin; habitus ovoid ..... 12  
— Pronotum with carinae not reaching anterior margin; habitus subparallel .....  
..... *Symbiotes* Redtenbacher
- 12(11). Tarsi 3-3-3 ..... *Clemmus* Hampe  
— Tarsi 3-4-4 ..... *Exysma* Gorham

### Key to adults of *Micropsephodes*

1. Pedicel ovoid to elongate; antennomere III elongate (length greater than 2x width) (Fig. 6C);  
lacinia unisetose apically (Fig. 6F); larger species (>1.25 mm) ..... 2



**Figure 1.** Map of the Bahamas showing North Andros Island (yellow) and Forfar Biological Station (red dot). Map courtesy of the University of Texas Libraries, The University of Texas at Austin.



**Figure 2.** General body forms and relative sizes of *Micropsephodes* species. **A)** *M. lundgreni* Leschen and Carlton. **B)** *M. serraticornis* Champion. **C)** *M. bahamaensis* Shockley, new species. Scale bars = 0.50 mm.

- Pedicel subglobose; antennomere III short (length never greater than 2x width); lacinia bisetose apically; smaller species (<1.25 mm) ..... ***M. lundgreni* Leschen and Carlton**
- 2(1). Maxillary palpomere IV elongate and cylindrical, widest apically; labial palpomere I small, subglobose; habitus subhemisphaerical (Fig. 2B, 3) ..... ***M. serraticornis* Champion**
- Maxillary palpomere IV less elongate, widest near midlength (Fig. 6F); labial palpomere I large, elongate and subcylindrical (Fig. 6G); habitus elongate-oval (Fig. 2C, 5) ..... ***M. bahamaensis* Shockley**

***Micropsephodes bahamaensis* Shockley, new species**

(Fig. 2C, 5-9)

**Etymology.** The specific epithet is based on the fact that this is the first species of *Micropsephodes* to be described from the Bahamas.

**Diagnosis.** Adults of *M. bahamaensis* may be distinguished from those of *M. lundgreni* and *M. serraticornis* by the combination of the following characters: larger size and elongate habitus; much shorter setae along the lateral margins of the elytra (Fig. 2); ovoid pedicel and elongate antennomere III (Fig. 6C); lacinia unisetose apically (Fig. 6F); galea with 10 setae apically, the two most laterad much narrower and less stout compared to the medial eight (Fig. 6F).

**Description.** Length 1.35-1.41 mm (mean = 1.38); width 1.00-1.02 mm (mean = 1.01); depth 0.70 mm (n = 3). Body (Fig. 2C, 5A, B) elongate oval, moderately convex; dorsum shining, dark brown-black, glabrous; venter, antennae, mouthparts, and legs reddish-brown, covered with vestiture of short, fine, pale-colored setae.

**Head.** Head (Fig. 6A, B) deeply retracted into prothorax, highly deflexed and hypognathous, completely obscured when viewed dorsally; frontoclypeal suture present; gular sutures relatively short; frons finely and sparsely punctate; clypeus transverse and rectangular; tentorium with anterior arms convergent, but not fused medially, corpotentorium lyriform. Eyes large, round, and finely-faceted. Labrum (Fig. 6D) transverse and ovoid, truncate and submembranous apically. Mandible (Fig. 6E) bifid apically with prominent subapical tooth; prostheca divided longitudinally with a basal tuft of setae just distad of

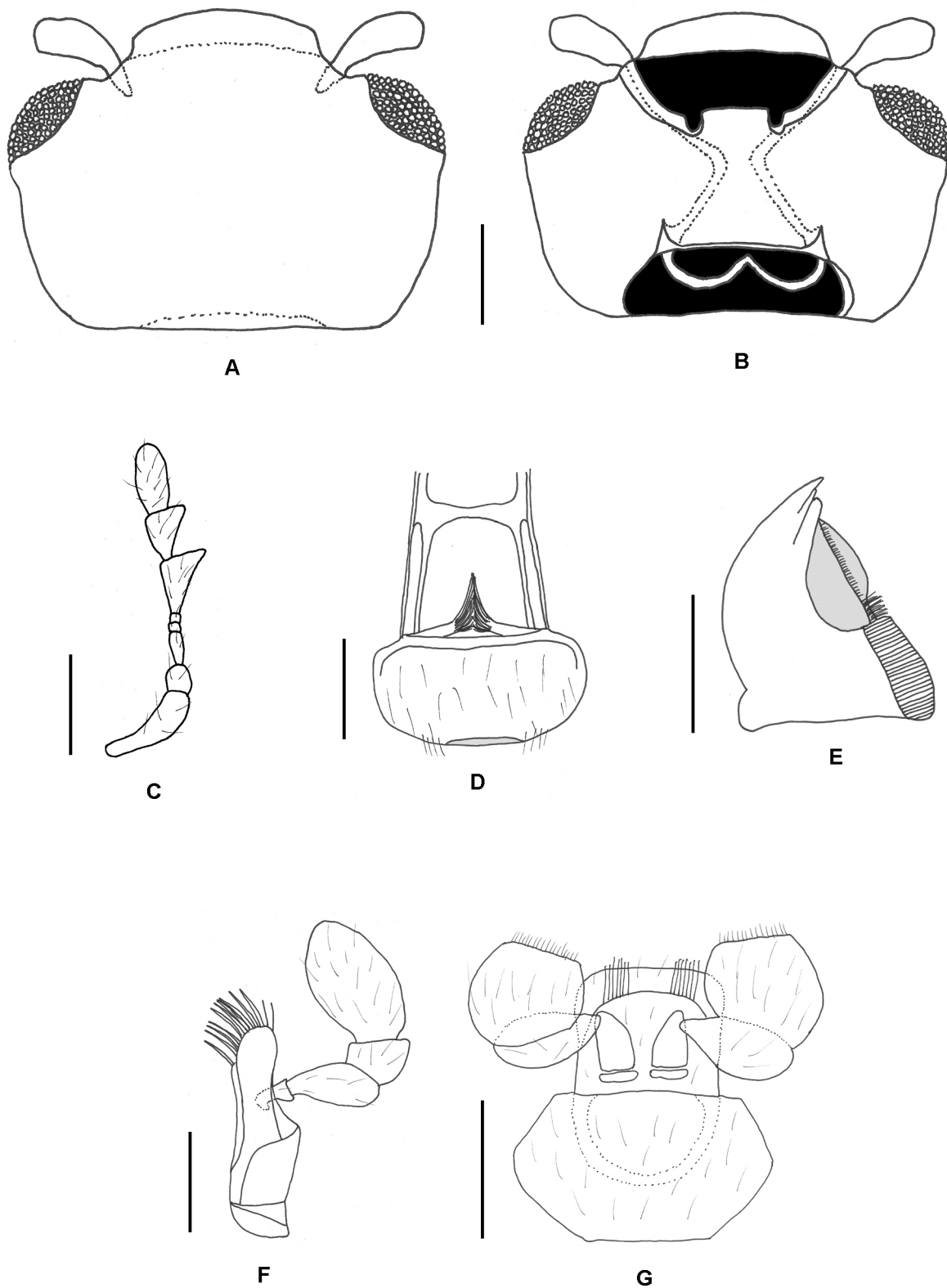


**Figure 3-5.** Holotypes of *Micropsephodes* species. **A)** Dorsal habitus. **B)** Lateral habitus. **C)** Labels. **3)** *M. serraticornis* Champion. **4)** *M. lundgreni* Leschen and Carlton. **5)** *M. bahamaensis* Shockley, **new species**. Scale bars = 0.50 mm.

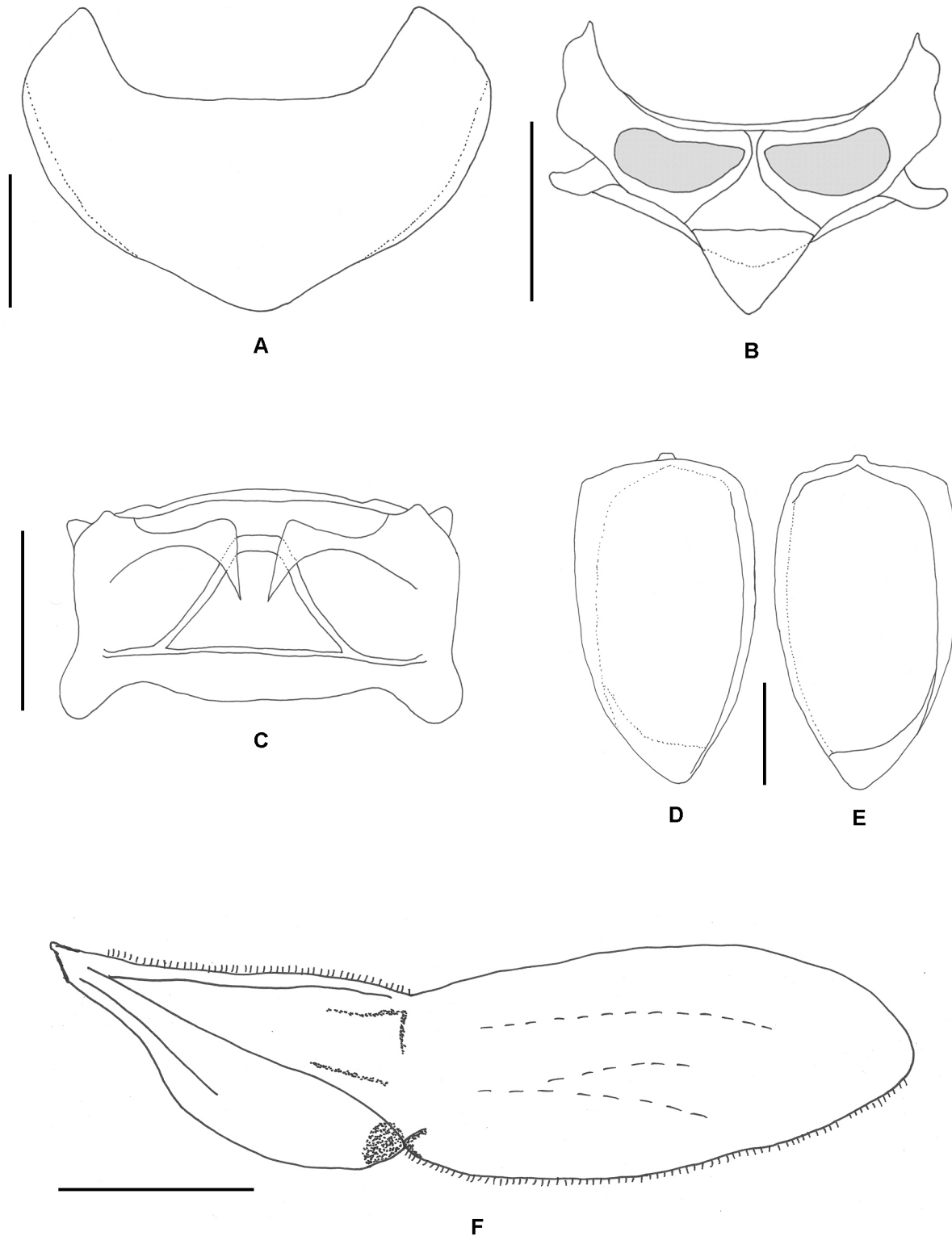
the mola; mola relatively large and finely, transversely ridged. Maxilla (Fig. 6F) with small triangular shaped cardo, well-developed and large basistipes, and narrow, elongate dististipes; galea with 10 large apical spines, the two lateral most spines narrow, the remaining medial eight spines thickened; lacinia narrow, bearing a single prominent spine apically; maxillary palp 4-segmented, palpomere I small and narrow, palpomere II long and expanded apically, palpomere III subquadrate, palpomere IV as long as preceding 3 segments combined and expanded medially with greatest width at 2/3 its length and apex narrowly rounded. Labium (Fig. 6G) with transverse mentum and quadrate prementum; labial palp 3-segmented, palpi narrowly separated basally, palpomere I large, elongate and subcylindrical, palpomere II transverse, palpomere III large ovoid to subquadrate and truncate apically. Antenna (Fig. 6C) 8-segmented; scape prominent, long, widening apically; pedicel subglobose; antennomere III narrow and elongate, distinctly longer than pedicel; antennomeres IV and V very small bead-like; antennomeres VI-VIII greatly enlarged to form a large, loosely articulated club, antennomeres VI and VII internally serrate.

**Thorax.** Pronotum (Fig. 7A) strongly transverse (length 0.40 mm; width 0.86 mm), highly convex, widest at base and narrowing anteriorly; anterior angles weakly produced and rounded apically; posterior angles roundly obtuse; lateral margins narrow; lacking lateral sulci; basal margin strongly lobed medially, opposite scutellum. Mesonotum (Fig. 7B) with small, triangular mesoscutellum. Elytra (Fig. 7D, E)





**Figure 6.** Head capsule and appendages of *Micropsephodes bahamaensis* Shockley, new species. **A)** Head capsule, dorsal. **B)** Head capsule, ventral. **C)** Antenna, left, dorsal. **D)** Labrum, dorsal. **E)** Mandible, left, dorsal. **F)** Maxilla, right, dorsal. **G)** Labium, ventral. Scale bars = 0.10 mm.



**Figure 7.** Thoracic nota and appendages of *Micropsephodes bahamaensis* Shockley, new species. **A)** Pronotum. **B)** Mesonotum. **C)** Metanotum. **D)** Elytron, left, dorsal. **E)** Elytron, left, ventral. **F)** Metathoracic wing, right. Scale bars = 0.25 mm.

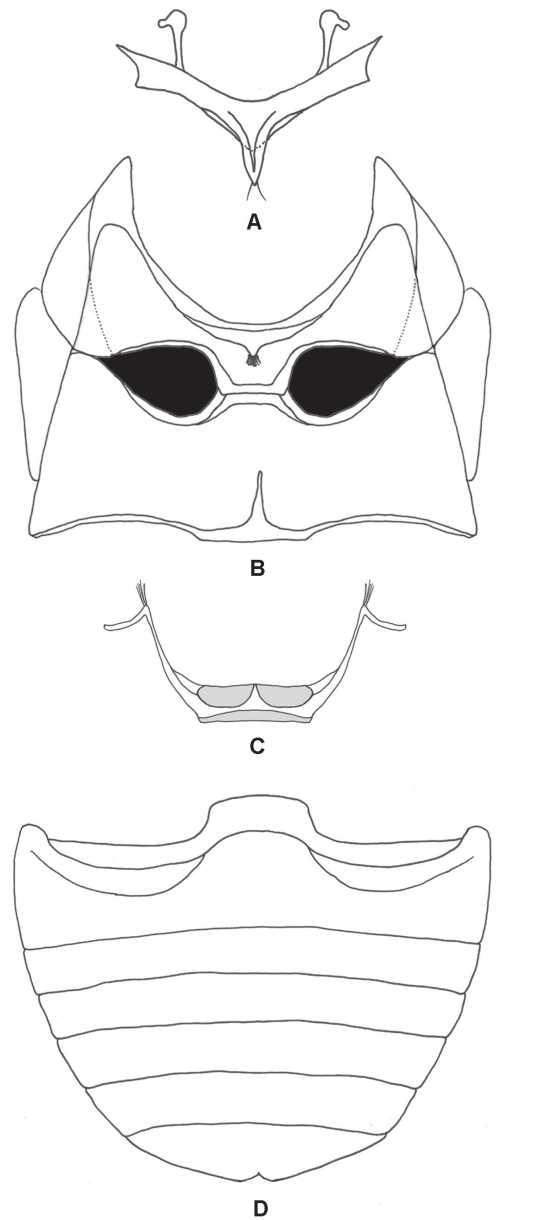
elongate oval, convex, finely and sparsely punctate, apex slightly and narrowly reflexed; epipleuron narrowing at 2/3 length, broad basally and apically; disc and lateral margin glabrous. Metanotum (Fig. 7C) transverse with prominent metascutellar ridge. Metathoracic wing (Fig. 7F) with a single cubitoanal vein posteriorly and a long sclerotized media posterior; medial and subcubital flecks small, conspicuous and undivided; anal lobe lacking. Prosternum (Fig. 8A) with short, narrow intercoxal process, acute apically with two apical setae, process extending to posterior margin of the procoxal cavity but not beyond. Mesosternum (Fig. 8B) flat, intercoxal process transverse, weakly narrowing towards apex, and truncate (nearly concave) apically and extending to posterior margin of mesocoxal cavity but not beyond it. Metasternum (Fig. 8B) highly transverse; intercoxal process broad straight, extending to middle of metacoxal cavity where it broadly meets the rounded intercoxal process of abdominal ventrite I; metendosternite (Fig. 8C) with widely separated anterior arms, short anterolaterally-directed tendons and long, posterolaterally-directed struts.

**Legs.** Procoxae (Fig. 9A) triangularly transverse, narrowly separated by prosternal process; mesocoxae (Fig. 9B) globose to ovoid, widely separated by mesosternal process; metacoxae (Fig. 9C) highly transverse, narrowing laterally, widely separated by metasternal process and intercoxal process of abdomen. Pro-, meso-, and metathoracic legs similar in structure for femora, tibiae and tarsi; femora short, stout; tibiae long, narrow slightly expanded apically. Tarsi (Fig. 9D) 3-3-3 with long, lobed tarsomere I bearing spines ventrally and apically; tarsomere II relatively short with a narrow ventral lobe; tarsomere III long and narrow; pretarsus with claws sharp and ventrally bearing a flat, rectangular expansion basally, the apex of which is not acute or produced into a tooth.

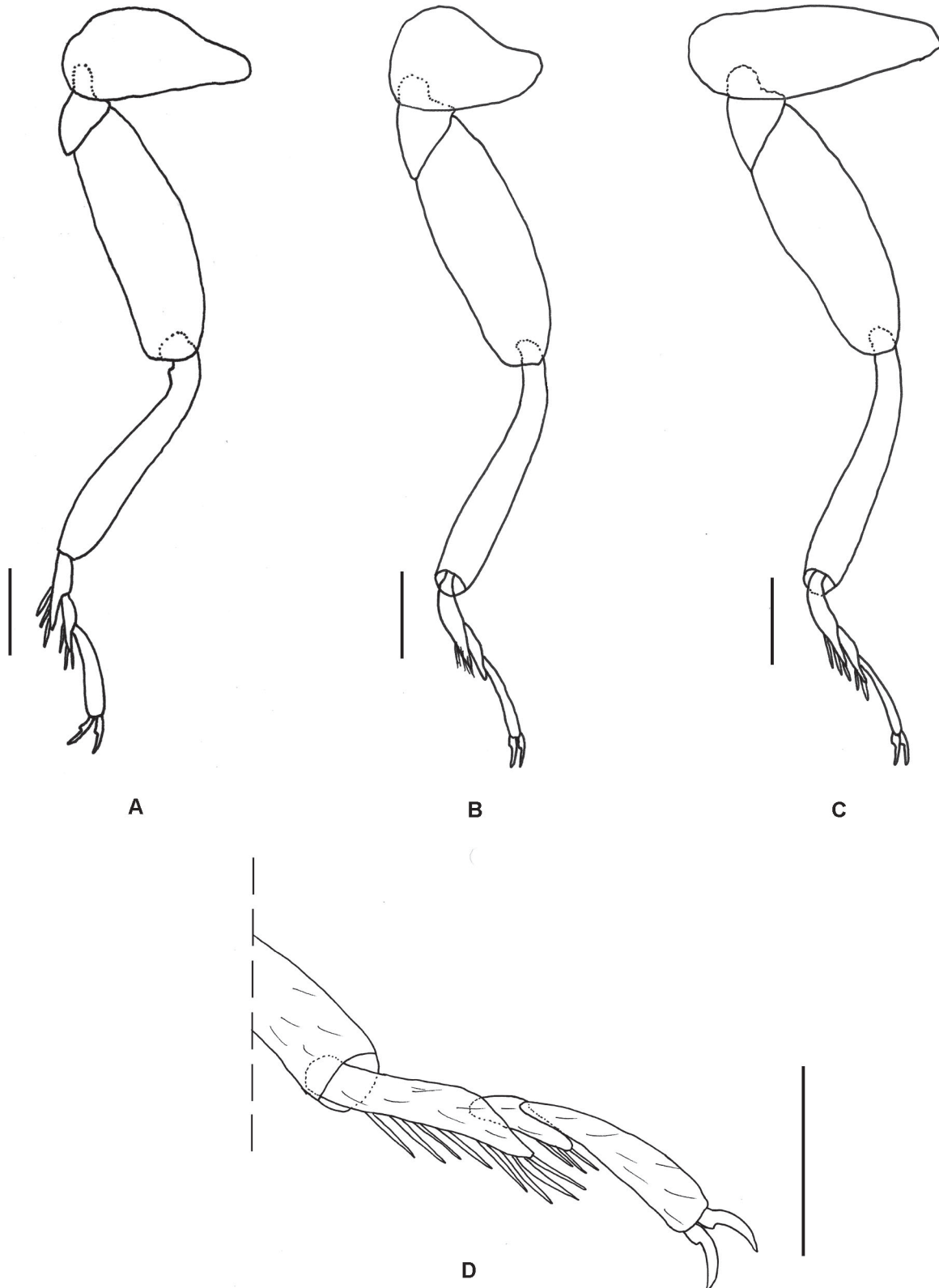
**Abdomen.** Abdomen (Fig. 8D) with six visible, transverse ventrites, widest near the midpoint of ventrite I and gradually narrowing apically, ventrite VI approximately half as wide as ventrite I. Ventrite I with postcoxal femoral lines recurved and nearly complete, shallow posteriorly reaching less than half length of ventrite I, merging anteromedially with the lateral margins of the heavily sclerotized intercoxal process; ventrites II-V similar in length and narrowing apically; ventrite VI with posterior margin notched medially in female.

**Note.** The female genitalia were damaged during clearing and dissection, but generally appeared similar to that described and illustrated for *Micropsephodes* by Tomaszewska (2000). Given the small size of the type series, no additional specimens were dissected.

**Material Examined.** Holotype and paratype (both female) bear the following collection data: BAHAMAS: Andros; Forfar Field Station; mv + bl, 4 June 2001; R. Turnbow. Holotype deposited at FSCA; Paratype



**Figure 8.** Thoracic and abdominal venter of *Micropsephodes bahamaensis* Shockley, new species. **A)** Prosternum, ventral. **B)** Mesosternum and Metasternum, ventral. **C)** Metendosternite, ventral. **D)** Abdomen, ventral. Scale bar = 0.50 mm.



**Figure 9.** Legs of *Micropsephodes bahamaensis* Shockley, new species (vestiture removed). **A)** Prothoracic leg, left. **B)** Mesothoracic leg, left. **C)** Metathoracic leg, left. **D)** Close-up of prothoracic tarsus (vestiture intact). Scale bar = 0.1 mm.

deposited in RHTC. An additional paratype (disarticulated) is deposited in FWSC and bears the following collection data: BAHAMAS: Andros; Forfar Field Station; 2 June 2001; R. Turnbow.

## Discussion

Leschen and Carlton (2000) noted that males of *M. lundgreni* have secondary sexual characters on the head that are lacking in the females of that species, namely the medially concave vertex and the presence of a frontal tumulus (Fig. 4A). They also described sexual differences in the form of the antennal club with males having much more pronounced serration on antennomeres VI and VII. The holotype of *M. serraticornis* lacks all three characters, suggesting either that the holotype is female or that males of that species lack these characters. Tomaszewska (2000) makes no reference to these features in the *Micropsephodes* specimens from the Dominican Republic examined in her study, despite having examined both sexes since male and female genitalia are both illustrated, suggesting these characters may be specific to *M. lundgreni*. At present, the male of *M. bahamaensis* is still unknown so it is impossible to say whether the presence of secondary sexual characters in males is truly unique to *M. lundgreni* or, conversely, if their absence is a unique feature of *M. serraticornis*.

As noted by Leschen and Carlton (2000), *Micropsephodes* is probably more widespread and diverse than currently known and is in need of revision. Their cryptic habits and scattered/isolated distributions make them rarely collected, generally overlooked, and often difficult to obtain in large numbers. Additional species from other locations likely already exist in collections but remain unidentified beyond the subfamilial or even family-level. Likewise, the natural history and biology of this genus is still very poorly known, and the immature stages remain unknown. *Micropsephodes lundgreni* was reported by Leschen and Carlton (2000) as occurring under bark, and it is likely that this habit is shared by most if not all species. The adults and larvae of *Micropsephodes*, like most Anamorphinae, are likely to be primarily sporophagous and probably feed on spores of subcortical fungi. All appear to have well-developed wings suggesting that they have the ability to fly, and they are occasionally collected in flight intercept traps. Ulyshen and Hanula (2007) reported collecting *M. lundgreni* in traps suspended in the canopy, suggesting that there may be some vertical stratification in this species. Shockley et al. (2008) also reported collecting *M. lundgreni* in Lindgren funnel traps baited with bark beetle pheromones. At present, the nature and significance of this interspecific chemical attraction, if any, remains unclear. Additional specimens and more detailed observations of natural history are needed.

## Acknowledgments

I thank Mike Thomas, Florida State Collection of Arthropods, for allowing me to examine the specimens described in this manuscript. I would also like to thank Paul Skelley, Florida State Collection of Arthropods, and Chris Carlton, Louisiana State Arthropod Museum, Louisiana State University, for allowing me to examine the holotype and paratypes of *M. lundgreni*, respectively, and Roger Booth, British Museum of Natural History, for allowing me to examine the holotype of *M. serraticornis*. I further thank Chris Carlton and Wioletta Tomaszewska, Muzeum i Instytut Zoologii PAN, Warsaw, for critically reviewing this manuscript, and Joe McHugh, University of Georgia, and Mike Thomas for providing feedback on a previous draft. Partial support for this work was provided by the H.H. Ross Endowment of the Department of Entomology at the University of Georgia, through an NSF AToL grant (EF-0531665) to M.F. Whiting (subcontract to J.V. McHugh) and through an NSF PEET grant (DEB-0329115) to J.V. McHugh, M.F. Whiting, and K.B. Miller.

## Literature Cited

**Blackwelder, R. E. 1945.** Superfamily Coccinelloidea. Endomychidae. p. 436-440. Checklist of the Coleopterous Insects of Mexico, Central America, The West Indies, and South America. Parts 1-6. Smithsonian Institution, United States National Museum; Washington, DC. 1492 p.

- Champion, G. C. 1913.** Notes on various Central American Coleoptera, with descriptions of new genera and species. Transactions of the Entomological Society of London 1913: 58-169.
- Leschen, R. A. B., and C. E. Carlton. 1993.** Debris cloaking in Endomychidae: A new species from Peru (Coleoptera). Zoological Journal of the Linnean Society 109: 35-51.
- Leschen, R. A. B., and C. E. Carlton. 2000.** A new species of *Micropsephodes* from southern United States (Coleoptera: Endomychidae: Anamorphinae). Coleopterists Bulletin 54: 232-238.
- Pakaluk, J. 1986.** Description of an *Anagaricophilus* (Coleoptera: Endomychidae) larva from Madagascar. Proceedings of the Entomological Society of Washington 88: 313-315.
- Shockley, F. W., and K. W. Tomaszewska. 2007.** First larval description for *Symbiotes gibberosus* (Lucas) (Coleoptera: Endomychidae). Annales Zoologici (Warsaw) 57: 741-755.
- Shockley, F. W., M. D. Ulyshen, and N. P. Lord. 2008.** New distributional records and natural history notes for *Micropsephodes lundgreni* Leschen and Carlton (Coleoptera: Endomychidae). Coleopterists Bulletin 62: 350-352.
- Strohecker, H. F. 1953.** Coleoptera. Fam. Endomychidae. In: P. Wytsman (ed.). Genera Insectorum. Fasc. 210. L. Desmet-Verteneuil; Brussels. 140 p.
- Tomaszewska, K. W. 2000.** Morphology, phylogeny and classification of adult Endomychidae (Coleoptera: Cucujoidea). Annales Zoologici (Warsaw) 50: 449-558.
- Turnbow, R. H., and M. C. Thomas. 2008.** An annotated checklist of the Coleoptera (Insecta) of the Bahamas. Insecta Mundi 0034: 1-64.
- Ulyshen, M. D., and J. L. Hanula. 2007.** A comparison of the beetle (Coleoptera) fauna captured at two heights above the ground in a North American temperate deciduous forest. American Midland Naturalist 158: 260-278.

Received October 20, 2009; Accepted December 22, 2009.

