

University of Nebraska - Lincoln

DigitalCommons@University of Nebraska - Lincoln

Textile Society of America Newsletters

Textile Society of America

Winter 1993

Textile Society of America Newsletter 5:12 – Winter 1993

Textile Society of America, tsa@textilesociety.org

Follow this and additional works at: <https://digitalcommons.unl.edu/tsanews>



Part of the [Art and Design Commons](#)

"Textile Society of America Newsletter 5:12 – Winter 1993" (1993). *Textile Society of America Newsletters*. 6.

<https://digitalcommons.unl.edu/tsanews/6>

This Article is brought to you for free and open access by the Textile Society of America at DigitalCommons@University of Nebraska - Lincoln. It has been accepted for inclusion in Textile Society of America Newsletters by an authorized administrator of DigitalCommons@University of Nebraska - Lincoln.

TEXTILE SOCIETY OF AMERICA **Newsletter**

Volume 5, Number 12

Winter 1993

LETTER FROM THE PRESIDENT

EARLY IN MARCH the TSA Board met in Boston. In addition to further developing the plans for the 1994 Symposium in Los Angeles, we reviewed other projects to which the Society is committed. Most pressing was consideration of the scope of the periodical *Research in Progress*. Louise Mackie, who is in charge of this area of the Society's activities, hopes to expand its usefulness to the membership. Among other ideas discussed was that of including information on textile-related projects dealing with computers and videos. The Board will also be exploring ideas on how to make the network publication, which is issued every four or five years, more inclusive and thus more useful.

These aspects of TSA activities, as indeed everything we are doing, must be considered not only in light of what we are capable of accomplishing at this time, but also what the implications of these decisions will be on future TSA activities.

Again, I would like to stress that while TSA

was organized with the idea of service for the membership, without membership involvement the Board is limited. Do make an effort to communicate with Board members in your region or directly with any of the elected officers. We want to know your ideas and are grateful for your active involvement.

—Lotus Stack

TSA Regional Activities for Spring

TSA would like to encourage regional events, particularly in the alternate year to the biennial symposium. The regional chairpersons are listed on page 2. If you would like to volunteer your ideas and efforts to initiate an activity for TSA members in your region, please contact the appropriate chair.

EASTERN

A Harpers Ferry Tour

RITA ADROSKO, REGIONAL REPRESENTATIVE

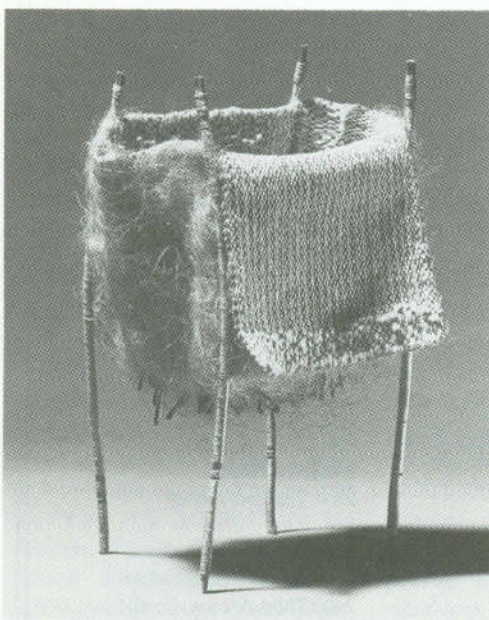
Though we are still in the process of defining regional boundaries, it is not too soon to launch the Eastern Region's first "odd year" (between symposia) activity—one that will combine a learning experience with the enjoyment of a spring outing in the West Virginia countryside.

In this case boundaries are no problem; if you are within driving distance of Harpers Ferry, West Virginia, put Saturday, April 24th on your calendar. On that day Jane Merritt, the National Park Service's Textile Conservator has offered to take us on a tour of the NPS Division of Conservation's brand-new labs in Harpers Ferry.

This central facility serves conservation needs of collections that range from fine and decorative arts to ethnographic materials, textiles, mineral and archeological collections and archival materials. On past visits to their old Textile Conservation Lab, I was particularly impressed with the amazing range of textile materials they handled: everything from the big Civil

continued on page 4...

SMALL WORKS IN FIBER: THE COLLECTION OF MILDRED CONSTANTINE at the Cleveland Museum of Art. See Exhibitions page 7.



▲ **BOX** by Ann Hamilton; weaving and wrapping, wool, cotton, linen, pine needles, and sticks
4-5/8" x 8-1/2" x 4-1/8"

In this issue . . .

Tours & Travel	2
TSA Board of Directors	2
Announcements	
Lectures, Classes & Workshops	3
Conferences, Meetings, Symposia	3
Calls for Proposals	4
Thurman Honored	4
State of the art library opens	4
Exhibitions	5
Spring Textile Shows in NYC	6
Publications	8
Membership Information	9

TSA Calendar

1993

MARCH 15

Newsletter deadline, Spring/Summer issue

MARCH 25

Deadline to register for Harpers Ferry tour

APRIL 24

Tour of NPS Division of Conservation labs at Harpers Ferry

SEPTEMBER 15

Newsletter deadline, Fall issue

OCTOBER 15

Deadline for *Research in Progress*

1994

JANUARY 15

Newsletter deadline, Winter issue

SEPTEMBER 22-25

Fourth Biennial Symposium, Los Angeles:

Contact / Crossover / Continuity

1996

SEPTEMBER

Fifth Biennial Symposium, Winterthur Museum, Delaware



Tours & Travel

Tour to Guatemala for Weavers and Textile Enthusiasts March 30 - April 12

Anthropologist and textile scholar Margaret Blum Schevill, is leading this tour visiting museums, markets and weaving villages, as well as the Holy Week celebrations in Antigua Guatemala, and archaeological sites in Guatemala. Weaving villages in the Lake Atitlan area, Guatemala City, Antigua Guatemala and Quezaltenango, will be visited. Including airfare and double occupancy rooms: cost will be \$2,157 from Boston, \$2,167 from San Francisco (costs from other cities available on request). Optional 2-day tour of Tikal is \$337, including air. Contact Jean Kellaway, Crown Travel Center, (508) 997-3124 or (508) 992-0838.

Caravan to Carpets of Central Asia April 20 - May 10

This trip to Russia, Turkestan and Uzbekistan, focusing on the rugs and artistic heritage of Central Asia (including the Timurid Empire and Russian Czars), will be lead by rug authority George O'Bannon. It will enable participants to view art museums, local rug collections and bazaars, and take trips to Samarkand, Bokhara and Sharh-i-Sabz, among other more accessible cities like Moscow, St. Petersburg and Tashkent. Airfare, hotel room and most meals are included in this Travelgroups Tour, which costs \$3,885. For more information, contact Travelgroups Inc., (216) 444-0818 and (302) 654-8898.

Ecuadorean Weavings: A Textile Museum Study Tour to Ecuador June 27 - July 13

The still-handwoven textiles and dress of Ecuador's many ethnic groups, including pre-Inca and pre-

Conquistador peoples, will be studied. Tour leader and Ecuadorian textile authority, Lynn Meisch, will introduce participants to spinners and weavers from the Otavalo, East Imbabura, Salasaca, Queros, Cuenca and Canar areas of the mountains and show how they use both pre-Hispanic and modern technology to create belts, ponchos, blankets, shawls, ikat textiles, basketry, netting, knitting, embroidery, and hats, and use natural dyes like indigo, cochineal and walnut. All for \$3,700, including airfare from Miami, hotel and food. Contact High Country Passage, (415) 328-3636.

A Turkish Experience October 1 - 17

This is the seventh Textile Museum Study Tour to Turkey, planned by Martie Henze and led by Pat Leiser. The journey will include Ankara, Konya, Taurus village, Antalya, Aphrodisias, Pamukkale, Izmir and Istanbul. Private rug-related events and a shopping trip at the Grand Bazaar are included. All-inclusive costs are \$3,800. Call Academic Travel Abroad (800) 556-7896 or (202) 333-5555.

Proposed for 1994: Textile Museum Study Tour of Japan Spring or Fall

Yoshiko Iwamoto Wada, tour leader, will introduce travelers to antique and contemporary Japanese textile arts and crafts, including *shibori*, *tambafu*, *shifu*, the shuttleless water jet loom, wisteria cloth, and *kasuri*. Itinerary includes Tokyo, Kyoto, Kiryu, Amano, Hashidate, and Obama. Private collections, studio visits and personal meetings with artists of National Treasure designation included, along with airfare, hotel, food, etc. for estimated price of \$5,000 - \$6,000. Call Ishimoto Tours Inc, (415) 781-4350.

Textile Society of America

BOARD OF DIRECTORS

Officers

President: Lotus Stack*
Vice-President: Mattiebelle Gittinger*
Membership Secretary: Dale Gluckman*
Recording Secretary: Marianne Carlano*
Treasurer: Mary Jane Leland*
Past President/Advisor: Milton Sondag*

U.S. Regional Representatives

East: Rita Adrosko*
West: Dale Gluckman*
Midwest: Niloo Imami-Paydar*
South: Elizabeth Ann Coleman*

* These are elected positions

Task Representatives

Newsletter: Arlene Cooper
Textile Network: Zoe Annis Perkins
1994 Symposium: Patricia Anawalt
Louise W. Mackie
Research in Progress: Louise W. Mackie

Special Interest Groups

Artists: Joanne Brandford
Ethnic: Mattiebelle Gittinger
Archaeological: Elizabeth Barber
Technical: Jane Merritt

PATRICIA ANAWALT
Fowler Museum of Cultural History
UCLA
405 Hilgard Avenue
Los Angeles, CA 90024

RITA ADROSKO
Division of Textiles
NMAH 4131-MRC 617
Smithsonian Institution
Washington, DC 20560

ELIZABETH BARBER
1126 North Chester Avenue
Pasadena, CA 91104

JOANNE BRANDFORD
104 Brookfield Road
Ithaca, NY 14850

MARIANNE CARLANO
Museum of Fine Arts
465 Huntington Avenue
Boston, MA 02115

ELIZABETH ANN COLEMAN
Museum of Fine Arts
1001 Bissonnet Street
Houston, TX 77025

ARLENE COOPER
ESDA, Metropolitan Museum of Art
1000 Fifth Avenue
New York, NY 10028

MATTIEBELLE GITTINGER
The Textile Museum
2320 S Street, NW
Washington, DC 20008

DALE GLUCKMAN
Los Angeles County Museum of Art
5905 Wilshire Blvd.
Los Angeles, CA 90036

MARY JANE LELAND
4401 San Andreas Avenue
Los Angeles, CA 90065

LOUISE W. MACKIE
Royal Ontario Museum
100 Queen's Park
Toronto, Ontario
M5S 2C6 Canada

JANE MERRITT
National Park Service
Division of Conservation
Harpers Ferry Center
Harpers Ferry, WV 25425

NILOO IMAMI-PAYDAR
Indianapolis Museum of Art
1200 West 38th Street
Indianapolis, IN 46208

ZOE ANNIS PERKINS
St. Louis Art Museum
Forest Park, St. Louis, MO 63110

MILTON SONDAG
Cooper-Hewitt Museum
2 East 91st Street
New York, NY 10028

LOTUS STACK
Minneapolis Institute of Art
2400 Third Avenue, South
Minneapolis, MN 55404

Announcements

LECTURES, WORKSHOPS & CLASSES

THE COOPER-HEWITT MUSEUM is presenting four programs relating to textiles. On Thursday, May 6 at 6:30 pm, Patsy Orlofsky, Director, The Textile Conservation Workshop, Inc. will discuss "**The Connoisseurship Bias and Textile Conservation**," analysing the decision-making process, revealing certain biases and how they affect treatment choices. Registration fee: members: \$10, nonmembers \$15, students: \$5.

On Tuesday, May 18 Cooper-Hewitt will present a panel discussion, "**Contemporary Textile Design**" (see *Exhibition* notices for information).

On Friday, May 7 or Saturday, May 8 from 1-4:30 pm, Cooper-Hewitt is offering a workshop "**Fante Textiles: The Asafo Flag—An Appliqué Workshop**" led by Peggy Blechman; the fee is \$18 for members, \$20 nonmembers, \$15 students.

On Friday, May 14 or Saturday, May 15, 9:30 am-3:30 pm, Mary Walker Phillips will lead a workshop on "**Lace Knitting**"; the fee is members and students \$45, nonmembers \$60. For further information and for registration contact the Education Dept., 2 E. 91st St., New York, NY 10128, (212) 860-6321.

THE NEEDLE AND BOBBIN CLUB has announced its Spring 1993 lectures, which are open to the public. Mar. 11, 6:30 pm, Frieda Sorber will present a slide lecture on "**The Belgian Lace Industry**" at the Cooper-Hewitt Museum, 5th Ave. at 91st St., N.Y., N.Y. 10128; April 21: Annette Wiener, Dean, Graduate School of Arts and Sciences, N.Y.U., will present a lecture (topic, meeting place and time to be announced); June 3: Nicola Shillian will present a slide lecture on "**The**

Textile Art of Marguerite Zorach, 1887-1968" (meeting place and time to be announced). The fee is \$5 for non-members and \$3 for students. For reservations or further information, leave a message on Lynn Felsher's answering machine: (212) 683-5622.

PALEY DESIGN CENTER Lecture Series at the Philadelphia College of Textiles & Science, Media Classroom of the Paul J. Gutman Library. For more information call: the Goldie Paley Design Center, 951-2860.

Traditional Damask and a Contemporary Application, Bhakti Ziek (Philadelphia College of Textiles & Science), Sunday, March 14, 2 pm.

Mahila Vikas Sangh — A Woman's Weaving Cooperative in Bihar, India, Desiree Koslin (Fashion Institute of Technology), Sunday, March 21, 2 pm.

TEXTILE MUSEUM Workshops 2320 S Street NW, Washington, DC, Education Department, (202) 483-0981.

Festival! The Music, Dance and Crafts of Mexico, Saturday March 6, 10 am - 4 pm. In the spirit of Saltillo Serapes and Mexican Samplers, musicians and dancers will delight participants as they learn how to do simple dyeing and embroidery to create their own samplers.

An Introduction to Mexican Samplers, Saturday, Mar. 13, 10 am-4 pm. A day-long class introducing participants to some of the designs and stitch techniques of Mexican samplers, including six motifs and eight band patterns, plus an alphabet. Stitches include cross, long-arm cross, double running, satin, Aztec, and Florentine. Registration required, \$40 members, \$50 non-members (box lunch included in fee). Cost of kit (includes linen, vegetable dyed silk floss, needle, instruction booklet, color photo) \$18, payable to instructor on day of workshop.

The Textile Museum continues its **Saturday Rug and Textile Appreciation Mornings** (10:30 am).

Textiles will be featured on Feb. 27, Mar. 17 and Mar. 27; rugs will be the subject on Feb. 20 and Mar. 20. For specific topics and speakers, call the Museum at (202) 667-0441.

CONFERENCES, MEETINGS, & SYMPOSIA

The Division of Graduate Studies at the **FASHION INSTITUTE OF TECHNOLOGY** announces a Conservation Symposium, titled "**Storage: Current Practices—New Solutions**," to be held Saturday, February 27, from 10 am-4 pm. The speakers and their topics are: Lucy Commoner: "**A Comprehensive System for the Storage of Textiles at the Cooper-Hewitt Museum**"; Margaret Fikioris: "**Pandora's Box—The Storage of Textiles in Historic Structures**"; Lynn Felsher: "**Accessibility and Presentation: Encapsulating a Textile Study Collection**"; Joanna Hill/Ken Moser: "**AIC Talk Update: Shoe and Hat Storage at the Brooklyn Museum**"; Vuka Roussakis: "**New Solutions for Textile Storage at the American Museum of Natural History**"; Denyse Montegut: "**Custom-built Storage for Special Requirements**." The \$15 registration fee to: Fashion Institute of Technology, Graduate Studies Division—Room E-315, 7th Ave. at 27th St., N.Y., N.Y. 10001-5992.

INTERNATIONAL OLD LACERS INC. 40th Annual Convention August 2 - 7, 1993, Indianapolis. Convention includes classes, workshops, demonstrations and exhibits of handmade lace and lacemaking techniques taught by international teachers and experts. Also, reception at Indianapolis Museum of Art with a viewing of lace from the Collection, afternoon and evening excursions to Conner Prairie Historical Site, and judging of Annual Lace Competition.

Contact (call or send a long s.a.s.e.) Carolyn Regnier, 2409 South 9th, Lafayette, IN 47905, (317) 474 1176.

TEXTILE ARTS CENTER Tradition and Transition: Fiber Symposium, October 9 - 10, Congress Hotel, Chicago. The Symposium focuses on the concerns of the professional artist and educator, oriented toward issues rather than technique, inclusive of all textile mediums. As the last symposium addressing these issues was in 1978, a lot of progress has been made in the interim with a lot to be discussed. Keynote speaker is Suzi Gablik, author of *The Reenchantment of Art*. Also, the International New Art Forms Exhibition and other activities celebrating Chicago's "Year of American Craft" will be occurring at same time.

Contact Textile Arts Center, 916 W. Diversey Parkway, Chicago, IL 60614. Special Events Line: 312-929-9849

DECORATIVE ARTS INSTITUTE The Bedroom: From the Renaissance to Art Deco, April 29-May 2, Royal Ontario Museum and George R. Gardiner Museum of Ceramic Art.

This is the third annual Decorative Arts Institute, featuring 16 international decorative arts experts who will discuss various aspects of European and North American bedrooms from 1400 to 1939. Keynote speaker, John Hardy, furniture consultant, Christie's, London; other lectures include "**From Shift to Negligee**," "**Intimate Ceramics for the Bedroom**," "**The Bedroom in the Antebellum South**," and "**Frank Lloyd Wright's Bedroom**." Also, there will be viewing of ROM textile department exhibition, "**Bedroom to Boudoir**," and a full day of workshops on Monday, May 3 for close examination of material from ROM and The Gardiner Museum.

Cost: \$335 if registered before March 31; \$350 after that, plus \$160 for May 3 workshop. Contact University of Toronto School of Continuing Studies, (416) 978-2400 or The Gardiner Museum (416) 586-8080.

NEXT TIME . . .

The next Newsletter will contain detailed information on the 1994 TSA Symposium.

CALL FOR PROPOSALS

PRIVATE GRANTS FOR FIELD RESEARCH ON TEXTILES AND COSTUMES

The Center for Field Research (CFR) invites proposals for field research on textiles and costumes worldwide. Members of TSA are encouraged to apply. CFR recommends projects to the funding organization Earthwatch, which provides researchers with nonspecialist English-speaking volunteers, who are screened according to the project's needs and join researchers in the field to assist in data collection. Field grants average \$25,000 with the amount determined by the number of volunteers utilized over the course of a field research season. Proposals are reviewed monthly and should be received one year in advance of anticipated field dates. Examples of projects funded to date include one which used volunteers to assist with fiber analysis in Chile and another which documented the textile heritage of Ecuador and collected examples for exhibition at the Textile Museum, Washington, DC. To discuss your research goals and their appropriateness for Earthwatch support, please contact Program Officer Catherine J. Schlager at CFR, 680 Mount Auburn St., P.O. Box 403, Watertown, MA 02272, tel. (627) 926-8200, telex 510-600-6452, fax (617) 926-8532.

Continued from page 1

Regional Activities

Harpers Ferry Tour...

War era flags to archeological artifacts.

The tour will be limited to the first 35 people who sign up. Although final details have not yet been worked out, we will arrive by car individually or in groups (we will try to organize car pools) and meet at the Harpers Ferry Conservation Building at about 10 a.m. on the 24th. You can park in the large parking lot adjacent to the Conservation Facility. Bring a brown bag for a post-tour picnic lunch. We do not anticipate that there will be a fee. Directions and final plans will be mailed to everyone who signs up. Jane tells us that Harpers Ferry is 72 miles from Washington, DC—a one-hour twenty-minute drive. **Please use the form below to register.**

MIDWESTERN

Interested in Chinese and Japanese textiles? Plan to join Niloo Imami-Paydar and visiting scholars to view the Indianapolis Museum of Art's Asian Textile Collection on an afternoon in late March.

The Indianapolis Museum recently received a grant from the NEA to document the collections of Japanese and Chinese textiles, costumes and accessories. In late March, Mary and Ralph Hays will be in Indianapolis to assist with the cataloging. They have graciously

Gifts and Endowment Mark Anniversary

Christa C. Mayer Thurman Honored at Institute

A curatorial chair for the Department of Textiles at The Art Institute of Chicago has been endowed in honor of Christa C. Mayer Thurman, the curator, conservator and head of that Department for twenty-five years. We believe this is the first time in the museum profession that a textile curator has had a curatorial chair endowed and named in his or her honor while still holding the position.

The donor of the \$1 million endowment wished to remain anonymous and have the chair named in Mrs. Thurman's honor. A fund of \$166,000 in additional gifts to be used for future textile acquisitions was also established to mark the curator's 25th anniversary at the Institute.

consented to meet with TSA members to discuss the collection. Space limitations dictate a group size of 20 people.

For additional information and reservations please contact:

Niloo Imami-Paydar
Curator of Costumes & Textiles
Indianapolis Museum of Art
1200 West 38th Street
Indianapolis, 46208-4196
tel: 317-923-1331 ext. 144
fax: 317-926-8931

SOUTHERN

Ann Coleman will lead TSA members on a private tour of Houston's Bayou Bend. This is the home and historic collection of American Decorative Arts of Miss Ima Hogg.

Currently being renovated, the home reopens in Fall 1993. Ann Coleman, responsible for textiles and costuming in the historic house, will provide additional details concerning the tour at the following address:

Museum of Fine Arts
1001 Bissonnet Street
Houston, Texas 77005
713-639-7377

State of the Art Library Opens in Philadelphia

Last October saw the dedication of the the Paul J. Gutman Library at the Philadelphia College of Textiles & Science in the East Falls section of Philadelphia. The 54,000 sq. ft. facility is fully automated with a computerized catalog of holdings which may be searched from the library, dorm rooms, and other residences. In addition to hundreds of on-line databases and electronic access to 9,000 libraries world-wide, it features a multi-media classroom with high-resolution video presentation facilities and computer color graphics.

In addition, it houses historic costumes and textiles from the College's Paley Design Center museum collection, and uses fabrics and textiles extensively to enhance various learning resources.

Special media tours of the library are available. Contact Rich Teplitsky, media relations manager, (215) 951-2855.

REGISTER HERE for the Saturday, April 24th visit to the NPS Division of Conservation's labs in Harpers Ferry. Please fill out this form and return it by March 25th to: Rita Adrosko, Division of Textiles, NMAH 4131 MRC 617, Smithsonian Institution, Washington, DC 20560.
Late sign-ups CANNOT be accepted.

▲ NAME _____

▲ ADDRESS _____

▲ CITY _____

ST/PROV _____

ZIP/MC _____

▲ PHONE (Day) _____

(Evening) _____

Are You Driving? Yes No

Do You Need a Ride? Yes No

Could You Transport Anyone Else? Yes No

If YES, How Many? _____

Exhibitions

UNITED STATES

Arizona

THE HEARD MUSEUM, Phoenix, AZ. Feb. 20-May 9: "Contemporary Navajo Weaving: The Gloria F. Ross Collection of the Denver Art Museum."

JOANNE RAPP GALLERY/THE HAND AND THE SPIRIT, 4222 N. Marshall Way, Scottsdale. Through Feb. 28: "Surface Design: Woven and Printed."

California

DOWNEY MUSEUM OF ART, 10419 Rives Ave., Downey. Through Mar. 7: "Fiber Now 93."

LOS ANGELES COUNTY MUSEUM OF ART, 5905 Wilshire Blvd., Los Angeles, CA. 90036, (213) 857-6084. Through May 5: "Textiles and the Tai Experience in Southeast Asia." Curated by Mattiabelle Gittinger and organized by the Textile Museum, Washington, D.C., this is the first major exhibition of the textile arts of the Tai speaking people of Thailand and Laos. Comparative material from the Shan people of Burma and the Dai and Li peoples of southwest China are also included. These silk and cotton textiles are patterned with brightly colored threads and metallic yarns to create intricate designs encoding complex religious and social meaning. The exhibition is accompanied by a fully illustrated catalogue. *Hours: Tues.-Fri. 10 am to 5 pm, Sat. & Sun. 10 am to 6 pm.*

PACIFIC ASIAN MUSEUM, 46 N. Los Robles Ave., Pasadena CA, (818) 440-2742. Through May 9: "Textiles from the Roof of the World: Tibetan Rugs from Private Collections," an exhibition of over 100 rugs for sleeping and sitting, horse blankets, door and window rugs, saddle rugs, pillar rugs and back rests. Catalogue.

Connecticut

WADSWORTH ATHENEUM, 600 Main St., Hartford, CT 06103, (203) 278-2670. Feb. 28 through summer 1993: "Silk Quilts," an exhibition of eight mid- to late-19th-century quilts from the Museum's collection. These silk quilts use geometric shapes in strong, color-contrasting patterns in ways that seem to anticipate the "op art" movement of the 1960's. Gallery talk, Tues. Mar. 23 at noon with curator Carol Dean Krute.

District of Columbia

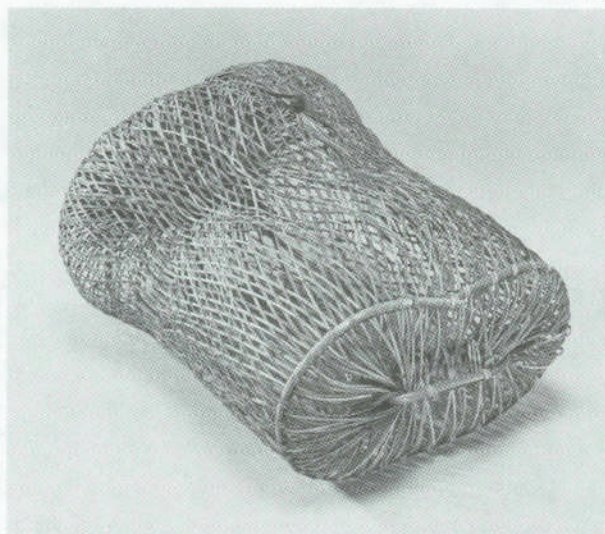
DAUGHTERS OF THE AMERICAN REVOLUTION MUSEUM, 1776 D St., NW, Washington, DC, 20006, (202) 879-3254. Through March

31: "Souvenirs from the Voyage of Life," an exhibition of approximately 140 18th- and 19th-century objects, exploring the concepts central to the theme of life passages, and including needlework, quilts, infants' clothing, wedding and mourning clothes and accessories.

THE TEXTILE MUSEUM, 2320 S St., NW, Washington, DC, 20008, (202) 667-0441. Through Aug. 8: "Patterns of Prestige: The Development and Influence of the Saltillo Serape," an exhibition tracing changes in the serape from the 18th century through its adoption as Mexico's national symbol in the late 19th and early 20th century. . . ¶ March 6-Sept. 19: "Mexican Samplers: Patterns of Continuity and Change," an exhibition of samplers dating from 1789 through the second half of the 19th century. Several distinctive types of samplers were produced in Mexico, demonstrating a synthesis of Mesoamerican, European and Oriental designs and techniques, which resulted in an embroidery tradition that is uniquely Mexican. (Gallery talks by Guest Curator Kathy Epstein, Sat., Mar. 6: 9:30 am for members, reservations required; 11 am, public walkthrough.) . . . ¶ April 2-Sept. 19: "Inspirations: Exploring the Art of Faith Ringgold." *Hours: Mon.-Sat. 10 am-5 pm, Sun. 1-5 pm.*

Hawaii

MANOA ART GALLERY, University of Hawaii, Honolulu. Mar. 6-Apr. 16: "Baskets: Redefining Volume and Meaning," 66 works by 11 leading makers. Catalogue (84 pp., 11 color plates, \$15) features an introductory essay by exhibition curator Pat Hickman, and essays by Laurel Reuter and Ed Rossbach. In conjunction with the exhibition, the Gallery is presenting several slide lectures: Fri. Mar. 12, 7:30-8:30 pm: Margo Mensing;



▲ BASKET, "Still Again," rattan and dye, by Joanne Segal Brandford. From *Redefining Baskets: Volume and Meaning* at the Manoa Art Gallery, Honolulu.

Sun. Mar. 13, 3-4 pm: Lillian Elliott (Opening Reception that day from 4-6 pm); Sun. Mar. 21, 4-5:30 pm: round table discussion, participants including Laurel Reuter, Lillian Elliott, John McQueen, Fred Roster, and Robert Jay, moderator; Mon. Mar. 22, 7:30-8:30 pm: John McQueen; Weds. Mar. 31, 12:30-1:30 pm: Joanne Segal Brandford; Fri. Apr. 2, 7-8 pm: Hisako Sekijima (reception); Weds. Apr. 7, 7:30-8:30 pm: Claudia Stafinski; Fri. Apr. 16, 7:30-8:30 pm: Dorothy Gill Barnes. For listings of workshops being held in conjunction with the exhibition, see **Announcements**.

Illinois

ART INSTITUTE OF CHICAGO, Michigan Ave. at Adams St., Chicago, 60603, (312) 443-3600. Through Mar. 28, 1993: "Mexican, Central, and South American Textiles: A Living Legacy," organized in conjunction with the major exhibition "The Ancient Americas: Art from Sacred Landscapes" and presenting more than 100 woven, embroidered, painted or printed textiles from the Art Institute's permanent collection. Included are works from Peru, including pre-Columbian examples, and 19th- and 20th-c. pieces from Mexico and Guatemala.

Indiana

INDIANAPOLIS MUSEUM OF ART, 1200 W. 38th St., Indianapolis, (317) 923-1331. Feb. 20-Mar. 27: "Beauty in Japanese Quilts" synthesizes traditional American quilting techniques and patterns with the indigenous fabrics, dyes and artisanship of Japan. The Indiana State Museum will display another portion of the exhibition to Mar. 26. . . ¶ Through July 4: "A World of Textiles: Recent Acquisitions" includes 30 pieces which are on display for the first time. The textiles—from Asia, Africa, Europe, the Americans and the South Pacific Islands—represent the traditions, styles and techniques employed by textile-producing cultures of these areas. Other recently acquired textiles will be displayed in galleries throughout the museum . . . ¶ Apr. 24-Oct. 24: "Persian and Turkish Art," a small exhibition, including textiles and Persian and Turkish rugs, to inaugurate the first installation of Islamic art in the IMA's renovated galleries. *Hours: Tues., Weds., Fri., Sat.: 10 am-5 pm; Thurs.: 10 am-8:30 pm; Sun.: noon-5 pm.*

Kansas

KAUFFMAN MUSEUM, North Newton. Through Mar. 28: "Beyond Tradition: Mennonite Art Quilts."

WICHITA CENTER FOR THE ARTS, 9112 E. Central, Wichita. Through Feb. 28: "Fiber Directions '93."

Louisiana

RIVER OAKS SQUARE ARTS AND CRAFTS CENTER, Alexandria. Mar. 16-Apr. 10: "Council of American Embroiderers Needle Expressions '92."

Massachusetts

MUSEUM OF FINE ARTS, 465 Huntington Ave., Boston, MA. 02115, (617) 267-9300. Apr. 22-Aug. 29: "Early Modern Textiles: From Arts and Crafts to Art Deco," the inaugural exhibition of the reopening Textile Gallery, featuring approximately forty works dating from the late 19th c. to about 1940. Many of these European and American textiles, selected mainly from the permanent collection and complemented by loans from local private collectors, have never before been displayed in Boston. The works of women textile artist, including embroideries by May Morris, a batik by Marguerite Zorach and printed textiles by Ruth Reeves, are featured prominently.

WORCESTER CENTER FOR CRAFTS, Worcester, MA. Through Feb. 27: Group show, including fiber by Mary Bero.

Michigan

THE SYBARIS GALLERY, 301 W. 4th St., Royal Oak, MI. Mar. 19-Apr. 17: "Fiber by Linda Bills," basket forms. . . ¶ Apr. 24-May 22: "Fourth Annual Basketry Invitational."

Minnesota

MINNEAPOLIS INSTITUTE OF ARTS, 2400 Third Avenue S., Minneapolis, MN 55404 March 21-June 20: "Images of a Queen's Power: Royal Tapestries of France," showcases the MIA's collection of ten 17th-c. tapestries illustrating the life of Artemisia of Caria, perhaps the most famous ruling widow-queen of antiquity. Eight of the tapestries form a complete set, the only one in the U.S.; the other two tapestries are from another set, also woven in

the early 17th c. by direction of Henry IV. The Artemisia tapestries were based on designs commissioned in the 1560s and intended to glorify the regency and validate the power of Queen Catherine de Medici. The exhibition includes other related materials and a video about how tapestries are made. A small illustrated catalogue with essays by consulting Curators Sheila ffolliott and Candace Adelson, and an introduction by Curator Lotus Stack is available. An extensive array of programs is being offered in conjunction with the exhibition (see *Classes*, etc. under **Announcements**, above, for further listings); of particular interest are two free lectures: Sun. Mar. 21, 2 pm, "History of the Artemisia Tapestries" by Candace Adelson; Sun. June 13, 2 pm, "Tapestry as a 17th-Century Public Relations Medium" by Sheila ffolliott. *Hours: Tues., Wed., Fri., Sat. 10 am-5 pm, Thurs. 10 am-9 pm, Sun. 12-5 pm.*

New Jersey

FAIRLEIGH DICKINSON UNIVERSITY, Madison. Through Apr. 10: "The Definitive Contemporary Quilt."

NEWARK MUSEUM, 49 Washington St., P.O. Box 540, Newark NJ, 07101, (201) 596-6550. Mar. 31-May 3: "Lore Lindenfeld: Fiber Graphics."

RIDER COLLEGE GALLERY, Lawrenceville. Through Mar. 14: "Patricia Malacher: Progression/Di-gression," fiber art using mylar, mixed media.

New Mexico

FARMINGTON MUSEUM, Farmington. Apr. 5-29: "Quilts by Ruth Garrison, Marla Hattabaugh and Meiny Vermaas-van der Heide."

THE MUSEUM OF FINE ARTS, 107 East Palace, Santa Fe. Through July 11: "The Alcove Show," four artists, including weavers Lia Cook and Rebecca Bluestone.

New York

CHINA INSTITUTE IN AMERICA, 125 East 65th St., N.Y., NY 10021, (212) 744-8181. Through Mar. 6: in honor of the Chinese Year of the Rooster, an exhibition of objects depicting a rooster motif, including textiles. *Hours: Mon. —Sat. 10 am-5 pm.*

COOPER-HEWITT MUSEUM, 2 E. 91st St., N.Y., NY 10128, (212) 860-6862. Through April 6: "From Background to Foreground: Looking at an 18th-Century Wallpaper," an exhibition examining the design and manufacture of an arabesque-patterned wallpaper by Reveillon within an historic and social context, and displaying the arabesque motif in other Western decorative objects including textiles. . . ¶ May 4-Sept. 26: "Design and Fabric Technology: Pushing the Limits," an exhibition featuring recent ground-breaking collaborations between artist/designers and fabric producers that demonstrate unique and creative mergers of commercial and artistic concerns. The work of Ulf Moritz, Patricia Kinsella, Sheila O'Hara, Junichi Arai, and the design firm COOGI Australia will be shown; each pushes the limits of a well established technology to demonstrate that the traditional commercial constraints of cost, complexity and market can be broken. In conjunction with the exhibition, on Tues. May 18 at 6:30 pm, weaver Sheila O'Hara and Billy Schleifstein, representing COOGI Australia, will discuss their respective philosophies and techniques of integrating old and new systems of textile design with Milton Sunday, exhibition curator and Curator of Textiles at Cooper-Hewitt. (For registration information, contact the Education Department at the above address, or phone 212-860-6321.)

THE GALLERY, Main St. and Shore Rd., Cold Spring Harbor, Long Island, NY, (516) 367-6925. Through October 31: a show of woven reversible coverlets made between 1800 and 1860, sponsored by the Society for the Preservation of Long Island Antiquities. *Hours: Thurs. through Sun. 11 am-4 pm. Admission: \$1.50.*

METROPOLITAN MUSEUM OF ART, 1000 Fifth Ave., N.Y., N.Y. 10028, (212) 879-5500. Through Mar. 14, "Tiraz: Inscribed Textiles from Islamic Workshops", an exhibition of approximately 30-35 such textiles. Because of alternating gallery closings, it is advisable to call the Museum for viewing hours. Through April 20: "Drawing for



▲ The SALTILLO SERAPE, (Mexico, ca. 1800-1860, collection of Jim Collins) provides inspiration for crafts workshops at the Textile Museum. See *Announcements*, page 3 and *Exhibits*, page 5.

For information about **The New York Spring Home Textiles Show**, April 17-20, and **Surtex**, May 17-19, both to be held at the Jacob Javits Convention Center in NYC, call or write George Little Management, Inc., 2 Park Ave., Suite 1100, NY, NY 10016-5748, tel. (212) 685-6598.

Design: Christopher Dresser to the Present," 112 design drawings from the Museum's collection, including patterns for textiles and wallpaper.

NANCY MARGOLIS GALLERY, 251 W. 21st St., N.Y., NY Mar. 11-Apr. 10: "Lissa Hunter: Basket Forms."

NUNO COLLECTION, Textile Showroom, 979 3rd Ave., D&D Building, 2nd fl., N.Y., NY, (212) 421-9114. From mid-Feb.: "Wovenworks," a series of solo exhibitions by basket artists, the first one featuring Lillian Elliott. Call for information.

North Carolina

CHELSEA GALLERY, Western Carolina University, Cullowhee. Mar. 9-Apr. 7: "Sweetgrass Baskets by Marguerite Middleton."

DURHAM ART GUILD, 120 Morris, Durham. Feb. 21-Mar. 24: "Jennifer Eveleth Fisher: Connections, Quilts."

Ohio

AKADEMEIA, 10307 Detroit Rd., Cleveland. Through Feb. 26: "Fiber Invitational 93."

THE CLEVELAND MUSEUM OF ART, 11150 East Boulevard at University Circle, Cleveland OH 44106, (216) 421-7340. Through March 28: "Small Works in Fiber: The Collection of Mildred Constantine," about 50 works ranging in date from 1968 to 1992, and representing virtually every major 20th-century fiber artist in Europe, North America, and Asia, including Magdalena Abakanowicz, Jagoda Buic, Lenore Tawney, Sheila Hicks, Ed Rossbach, and Kay Sekimachi. Hicks, among the first to create works of a personal and intimate scale and purpose, was the first to present Miss Constantine with one of her own untitled works in 1968. Gallery talks: Weds. Mar. 3, 1:30 pm by Barbara Kathman; Sun. Mar. 7, 1:30 pm by Ms. Kathman, accompanied by an interpreter for visitors who are deaf or hearing impaired. *Hours: Tues., Thurs., Fri. 10 am to 6 pm, Wed. 10 am to 10 pm, Sat. 9 am to 5 pm, Sun. 1 pm to 6 pm.*

Pennsylvania

ALLENTOWN ART MUSEUM, 5th & Court Sts., PO Box 388, Allentown, PA 18105-0388, tel. (215) 432-4333, fax (215) 434-7409. Mar. 28-June 6: in conjunction with "Sightseeing in Paradise: The Great Tokaido Road in Nineteenth-Century Japanese Prints," a select group of Japanese textiles and related objects will on display in the Society of the Arts foyer. Included are painted fans, silk brocades, a Kabuki costume, and paper stencils used for textile printed; the highlight is an entirely embroidered four panel screen depicting a view of white-capped ocean waves.

THE FABRIC WORKSHOP, 1100 Vine St., Philadelphia, PA 19107, (215) 922-7303. Through

March: "She Lost It," a new installation by Louise Bourgeois, and created at the Fabric Workshop, of a 178-foot-long scarf printed with a story Bourgeois wrote about a woman waiting for a man to return home. Installed on a continuous spiral wall, the scarf and its story unfold as the viewer travels into the labyrinth. *Hours: Mon.-Fri. 9 am-6 pm, Sat. 12-4 pm.*

PALEY DESIGN CENTER OF THE PHILADELPHIA COLLEGE OF TEXTILES AND SCIENCE, School House Lane and Henry Avenue, Philadelphia, PA 19144-5497, 215-951-2860. Through April 3: "The More Things Change, The More They Stay the Same": Textile Production Past and Present, an exhibition of textiles, tools and related materials, all from the permanent collections of the Paley Center. The exhibition will focus on the continuity between old and new textile production practices, whether hand-crafted or machine-produced. *Hours: Tues.-Fri., 10 am-4 pm, Sat. & Sun. noon-4 pm. Free admission.*

Washington

NORDIC HERITAGE MUSEUM, Seattle, WA. Through Apr. 13: "Contemporary Tapestries from Oregon, Washington and British Columbia."

Wisconsin

GALLERY OF DESIGN, School of Family Resources and Consumer Sciences, University of Wisconsin-Madison, 1300 Linden Dr., Madison, WI 53706, (608) 262-8815. March 23-April 2: "Environment, Textiles and Design 1993," a juried exhibition featuring recent undergraduate work produced in apparel, textile and interior design classes. . . . April 15-May 16: "Identity in Cloth: Continuity and Survival in Guatemalan Textiles," an interpretive exhibition featuring approximately 60 textiles made by Mayan women of highland Guatemala from about 1920 through the present. The quality of workmanship and design of their colorful and distinctive costume are recognized throughout the world. Through 20th-century Westernization and recent political strife, the weavers have continued to turn to their textiles as both an affirmation of their heritage and a vital economic support. Mayan identity, continuity and survival are embodied in these textiles. *Hours: Tues.-Fri. 11 am-4 pm, Sun. 1 pm-4 pm.*

KATIE GINGRASS GALLERY, 241 N. Broadway, Milwaukee. March 12-April 9: Group show, with fiber by Jean Stamsta.

EDITOR'S NOTE: We continue to encourage your submissions of announcements that are of interest to our membership. However, time constraints prohibit our further researching the news you send us. Therefore, if information in an announcement is incomplete, it is because we received it that way.

CANADA

Ontario

THE MUSEUM FOR TEXTILES, 55 Centre Avenue, Toronto, Ontario, Canada, M5G 2H5, (416) 599-5515. Through March 28: "125th Anniversary Exhibit: Reflections—Quilts from Ontario, 1840-1940," a traveling exhibition of historical quilts from the collection in honor of the 125th anniversary of Canadian confederation. Continuing exhibitions: "Memorial Exhibition: The Kalman Carpet Collection," carpets donated to the collection during the past twelve years by the late Thomas P. Kalman. . . . Through March 28: an exhibition of works by the "International Amalgamated Threadbenders Union," three artists—Jennifer Angus, Lou Cabeen and Mary Ann Hickey—working in textiles and fiber, who are committed to creating and exhibiting textile work that is both politically and socially motivated. New exhibitions: . . . From Feb. 18 to Dec. 24: "Narratives in Cloth: Embroidered Textiles from Aomori, Japan," accompanied by an illustrated catalogue, which will feature 53 densely patterned regional textiles, mainly from the collection of the Keiko Kan Museum in Aomori, that illustrate the full range of techniques and patterns indicative of the textile art of this area. (gallery talk on Sun., Mar. 7 at 3 pm) . . . From April 8: "Hooked Rug Exhibition: Home is where the Mat is," examining the range of hooked rug making in Eastern Canada, supplemented by examples of sewn and braided combination rugs from the collection. . . . Through October: "Mythical Beasts and Magical Flowers: Batiks from Java". . . . To June 1: "A Single Day of the Skillful: Textiles of India," (gallery talk on Sun., Feb. 28 at 3 pm). . . . To July 18: "Six Master Works: Weavings from Latin America". *Hours: Tues. through Fri. 11 am to 5 pm, Sat. and Sun. noon to 5 pm.*

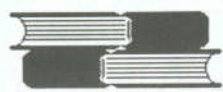
AFRICA & EUROPE

Mali

NATIONAL MUSEUM OF MALI, Bamako. Feb./Mar.: "Knots and Nets: Spiritual Connections/Noeuds et Filets: Liens Spirituels," travels through Nov. to Johannesburg and Capetown, S. Africa, Harare, Zimbabwe, and Dakar, Senegal. Knotted and netted works by 24 U.S. fiber artists. Catalogue: Nancy Neumann Press Curatorial Services, 1620 The Terraces, Baltimore, MD 21209.

Switzerland

TEXTILMUSEUM, 9000 St. Gallen. Through Spring 1993: "Putting on Frills," an exhibition meant to provide an impression of linen embroidery of the late 18th to the 20th century through bonnets and neck textiles, including many 19th-c. examples from the Iklé collection.



Publications

EDITOR'S NOTE: We continue to encourage your submissions that are of interest to our membership, especially articles and published papers about which we otherwise might be unaware. However, time constraints prohibit our further researching the news you send us. Therefore, if information is incomplete, it is because we received it that way.

The Archaeology of Fiber: Before Your Eyes. J. Numome, 1992. Senshoku to Seikatsusha, Kyoto. Archaeological silk textile finds in Japan, 300+ pp., maps and 585 photos, 400+ color. ¥15,000.

Arts and Crafts of Tamil Nadu. N. Krishna, 1992. Includes textiles created in this South Indian state. Grantha Corp., distributed Washington Univ. Press. 176 pp. 160 color photos. \$45.00

Aymara-Bolivianische Textilien/ Historic Aymara Textiles. W. Siegal, 1991. German and English text. Deutsches Textilmuseum, Krefeld. DM25. \$30 from author, Santa Fe, NM 87501.

Chinese Textile Art Viewed Through Figure Paintings of the T'ang and Sung Dynasties. Chang Hsiang-Wen. Volume XX, No. 3, Autumn 1992, *Asian Culture*, Asian Pacific Cultural Center, Taipei, Republic of China (Taiwan).

Crafts of West Bengal. P. Sen, 1992. Includes textiles created in this East Indian state. Grantha Corp., distributed by Washington Univ. Press. 204 pp., 150 color photos. \$45.00

Crafts of Himachal Pradesh. S. Aryan, 1992. Includes embroidery and weaving in this Western Indian Himalayan state. Grantha Corp., distributed by Washington Univ. Press. 204 pp, 150 color photos. \$45.00

Coptic Fabrics. M-H Rutschowskaya, 1990. Adam Biro, Paris. \$60.00

Cultures at Crossroads: S.E. Asian Textiles from Australian National Gallery. R. Maxwell, 1992. The Asia Society, New York (exhibition catalogue). \$25.00

Der Frankfurter Domschatz, Band I, Die Paramente. K. Stolleis, 1992. Liturgische Gewänder und Stickereien 14. bis 20. Jahrhundert. Im Auftrag der Frankfurter Historischen Kommission bearbeitet von Karen Stolleis. 1992. Waldemar Kramer, Frankfurt am Main. DM 68

15th Biennale—Internationale de Lausanne Contemporary Textile Art 1992. Musée Cantonal des Beaux-Arts, Palais de Rumine, Lausanne, Suisse (exhibition catalogue). \$15.00

The Gift of Birds, Featherwork of Native South American Peoples. R. Reina & K. Kensinger, eds., 1991. University Museum of Archaeology & Anthropology, Philadelphia. Includes a look at mythology, distribution and iconography of featherwork. 138 pp., 15 b&w and over 175 color illus., line drawings, maps. \$40.00

Gionmatsuri 'Yama' 'Hoko' Kensohin Chose Hokokusho: Torai Sensaokuhin no Bu. N. Kajitani & K. Yoshida, 1992. Gion Festival Committee, Kyoto. Japanese text w/English titles, 297 textiles, tapestries, costumes, rugs & carpets imported into Japan in 17th-19th century for use in Gion Festival, Kyoto, each July. 210 pp., 43 color & 302 b&w illus., ¥15,000.

The Hidden Jewish Element in Byzantium's Silk Industry: A catalyst for the impact of Byzantine silks on the Latin Church before 1200 AD? A. Muthesius, *Bulletin of Judaean-Greek Studies*, No. 10, Summer 1992, pp. 19-25. (Univ. of Cambridge, U.K.)

Inalienable Possessions: The paradox of keeping while giving. A. Weiner, 1992. University of California Press. \$15.00

The Italian Renaissance Interior: 1400-1600. P. Thornton, 1991. Includes textiles, techniques and furnishings. Harry N. Abrams, New York.

The Ladies' Guide to Needle Work (1877). A. Frost, 1992. American-Victorian fancy work and decorative stitches for clothing. R.L. Shep, Box 668, Mendocino, CA 95460. 122 illus., \$9.95

The Magic of Linen: Flax Seed to Woven Cloth. L. Heinrich. In-depth overview of history and current usage and production of linen. 228 pp, 186 color plates, 136 b&w photos. Signed copies, \$43.95, unsigned, \$41.95 + \$2 s&h.

Maya Textiles of Guatemala: The Gustavus A. Eisen Collection, 1902. M. Schevill, 1993. Catalog of entire collection of over 200 textiles made at turn of century, now in Hearst Museum of Anthropology at Berkeley. 320 pp, 130 color and 200 b&w illus., cloth \$65.00, pbk \$29.95

MRU—Hill People on the Border of Bangladesh. C-D Brauns & L. Löffler. (English edition) 1990, Birkhauser Verlag, Basel, Boston & Berlin. \$50.00

Oriental Rugs from Pacific Collections. M. Eiland, 1992. Selected by the editor of *Hali*. San Francisco Bay Area Rug Society, distributed by Washington Univ. Press. 252 pp, 327 illus., 236 in color. cloth \$85.00, pbk \$50.00

Pina. L. Montiola, 1991. Amon Foundation, Metro Manila, Philippines. \$90.00

Sinaunang Habi: Philippine Ancestral Weave. M. Roces, 1991. The Nikki Coseteng Filipiniana Series, Quezon City, Philippines. \$150.00

Splendors of the Ottoman Sultans. N. Atasoy & T. Artan, 1992. Memphis Cultural International Cultural Series—Wonders, Memphis, TN (exhibition catalogue). \$25.00.

Tellem Textiles: Archaeological finds from burial caves in Mali's Bandiagara Cliff. R. Bolland, 1991. KIT Press, Amsterdam. Dfl 100.

Textiellexicon: Dutch-English on Textile Terminology. J. Diehl, et al, 1991. Textielcommissie Musea, Commissie tot behoud van het museaal textielbezit, Amsterdam. \$25.00

Thai Textiles. S. Conway, 1992. British Museum Press, 46 Bloomsbury Street, London, WC1B 3QQ. \$35.00

Threads of Identity: Maya Costume of the 1960s in Highland Guatemala. P. Altman & C. West. 1992, Fowler Museum of Cultural History, Univ. California, Los Angeles. \$27.00.

Three Weavers. J. Loveless, 1992. Autobiography and philosophical musings of Taos, NM, weaver and fellow weavers Brown and Wilson. Univ. of New Mexico Press, 218 pp. \$24.95

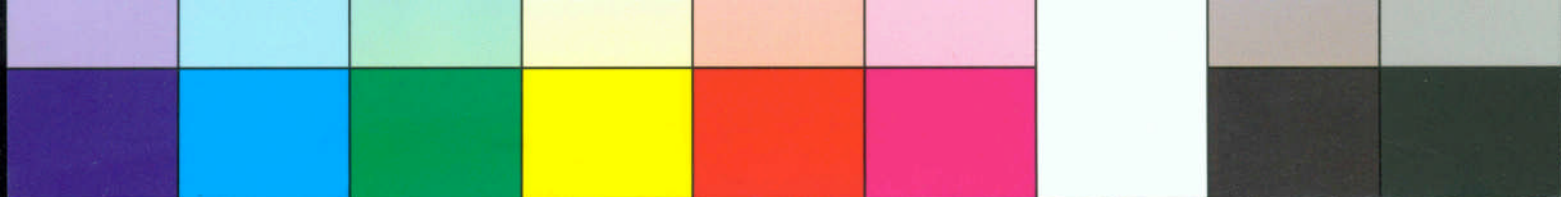
To Please the Caribou, Painted Caribou-Skin Coats worn by the Naskapi, Montagnais and Cree Hunters of the Quebec-Labrador Peninsula. D. Burnham, 1992. Royal Ontario Museum, Toronto. First comprehensive study of American hunter's reindeer-skin coats dating between 1700 and 1930 surviving in museums. 338 pp., 56 color and 61 b&w illus., line drawings. \$35.00

To Weave for the Sun, Andean Textiles in the Museum of Fine Arts, Boston. R. Stone-Miller, 1992. Catalog of Andean Textiles. 270 pp. \$35.00

A Vanishing Heritage: Laotian Textiles. J. Ruyak, *Ornament*, Summer 1992, pp. 52-55. \$6.00

The Wild Silk Saris of Eastern India. L. Lynton, *Arts of Asia*, Vol. 22, no. 5, Sept/Oct 1992, pp. 86-99. \$9.50

The Yusen Kimono of Moriguchi Kunihiko. O. Impay, 1991. Ashmolean Museum, Oxford & Danish Museum of Decorative Arts, Copenhagen (exhibition catalogue). \$7.00



1993

MEMBERSHIP YEAR
Jan. 1, 1993–Dec. 31, 1993

- RENEWAL
- NEW

Particular interest within the field of textile history:

▲ NAME _____

▲ MAILING ADDRESS _____

▲ _____

▲ CITY ST/PROVINCE ZIP/POSTAL CODE COUNTRY

▲ INSTITUTION TITLE

▲ PHONE WORK: HOME:

ANNUAL DUES:

U.S. & Canada \$30

All others \$35

Payable in U.S. dollars drawn on U.S. bank only, please.

Your cancelled check will be your receipt.

REMIT TO:

Textile Society of America

4401 San Andreas Avenue

Los Angeles, CA 90065-4134

Textile Society of America

The Textile Society of America is an organization created to provide a forum for the exchange and dissemination of information about the historic, cultural, socio-economic, artistic, and technical aspects of textiles. It was established by a Directing Council including scholars from major museums and universities within continental North America. The current president is Lotus Stack of The Minneapolis Institute of Arts.

■ The Society conducts seminars for the dissemination of relevant information and distributes to its members a *Newsletter* with information about exhibitions, publications, acquisitions, scholarly inquiries and items of general interest.

■ The Society organizes biennial symposiums. The published papers of each symposium, *Proceedings*, are distributed as a membership benefit in each symposium year. *Textiles as Primary Sources* was the subject of the inaugural conference in September 1988. The second biennial symposium, held in September 1990, focused on *Textiles in Trade*. The third biennial symposium, held in September 1992, considered the

theme: *Textiles in Daily Life*. Copies of these *Proceedings* are available at \$25.00 each (including postage), payment in US dollars drawn on a US bank only, please.

■ *The Network: an International Directory of Textile Scholars*, begun in 1983, was revised and enlarged in 1991 as a publication of the Textile Society of America. It is available to members at \$7.00 (non-members \$10.00), payment in US dollars drawn on a US bank only, please.

■ *Research in Progress*, first issued to the 1991 membership, provides each member an opportunity to share any aspect of his or her research—either to provide information or to seek it—in a one-page format. The deadline for the second issue is September 30, 1993. Guidelines for submissions will be presented in the 1993 *Newletters*. All members are encouraged to participate.

■ Please send requests for publications with your check to:
Textile Society of America
4401 San Andreas Avenue
Los Angeles, CA 90065-4134.