

This is the author's final, peer-reviewed manuscript as accepted for publication. The publisher-formatted version may be available through the publisher's web site or your institution's library.

Longitudinal study comparing the distribution of phenotypically and genotypically similar antimicrobial resistant *Salmonella* serovars between pigs and their environment in two distinct swine production systems

Shivaramu Keelara, H. Morgan Scott, William M. Morrow, Wondwossen A. Gebreyes, Maria Correa, Rajesh Nayak, Rossina Stefanova, and Siddhartha Thakur

How to cite this manuscript

If you make reference to this version of the manuscript, use the following information:

Keelara, S., Scott, H. M., Morrow, W. M., Gebreyes, W. A., Correa, M., Nayak, R., ... Thakur, S. (2013). Longitudinal study comparing the distribution of phenotypically and genotypically similar antimicrobial resistant *Salmonella* serovars between pigs and their environment in two distinct swine production systems. Retrieved from <http://krex.ksu.edu>

Published Version Information

Citation: Keelara, S., Scott, H. M., Morrow, W. M., Gebreyes, W. A., Correa, M., Nayak, R., ... Thakur, S. (2013). Longitudinal study of distributions of similar antimicrobial-resistant *Salmonella* serovars in pigs and their environment in two distinct swine production systems. *Applied and Environmental Microbiology*, 79(17), 5167-5178.

Copyright: Copyright © 2013, American Society for Microbiology.

Digital Object Identifier (DOI): doi:10.1128/AEM.01419-13

Publisher's Link: <http://aem.asm.org/content/79/17/5167>

This item was retrieved from the K-State Research Exchange (K-REx), the institutional repository of Kansas State University. K-REx is available at <http://krex.ksu.edu>

Longitudinal study comparing the distribution of phenotypically and genotypically similar antimicrobial resistant *Salmonella* serovars between pigs and their environment in two distinct swine production systems

Shivaramu Keelara¹, H. Morgan Scott², William M. Morrow³, Wondwossen A. Gebreyes⁴, Maria Correa¹, Rajesh Nayak⁵, Rossina Stefanova⁶, and Siddhartha Thakur^{1*}

¹ Department of Population Health and Pathobiology, College of Veterinary Medicine, North Carolina State University, Raleigh, NC 27607

² Department of Diagnostic Medicine / Pathobiology, College of Veterinary Medicine Kansas State University, Manhattan, KS 66506

³ Department of Animal Science, College of Agriculture and Life Sciences, North Carolina State University, Raleigh, NC 27607

⁴ Department of Veterinary Preventive Medicine, College of Veterinary Medicine, The Ohio State University, Columbus, OH 43210

⁵ Division of Microbiology, National Center for Toxicological Research, U.S. Food and Drug Administration, Jefferson, AR 72079

⁶ Arkansas Public Health Laboratories, Arkansas Department of Health, Little Rock, Arkansas 72205

FDA Disclaimer: Views presented in this manuscript do not necessarily reflect those of the U.S. Food and Drug Administration.

Journal section: Food microbiology

Key Words: *Salmonella*, Swine, Antimicrobial Resistance, Environment, Slaughter, PFGE

Running Title: Longitudinal *Salmonella* study in swine

*Corresponding author. Mailing address: Department of Population Health and Pathobiology, 1060 William Moore Dr., College of Veterinary Medicine, North Carolina State University, Raleigh, NC 27607, USA.

Phone: (919) 513-0729

Fax: (919) 515-3044

E-mail: sthakur@ncsu.edu

Abstract

The aim of this longitudinal study was to determine and compare the prevalence and genotypic profile of antimicrobial resistant (AR) *Salmonella* isolates from pigs reared in antimicrobial free (ABF) and conventional production systems at farm, slaughter and in their environment. We collected 2,889 pig fecal and 2,122 environmental samples (feed, water, soil, lagoon, truck and floor swabs) from 10 conventional and eight ABF longitudinal cohorts at different stages of production (farrowing, nursery, finishing) and slaughter (post-evisceration, post-chill and mesenteric lymph nodes; MLN). In addition, we collected 1,363 carcass swabs and 205 lairage and truck samples at slaughter. A total of 1,090 *Salmonella* isolates was recovered from the samples; these were isolated with a significantly higher prevalence in conventionally reared pigs (4.0%; n=66) and their environment (11.7%; n=156) compared to the ABF pigs (0.2%; n=2) and environment (0.6%; n=5) ($P < 0.001$). *Salmonella* was isolated from all the stages at slaughter, including the post chill step, in the two production systems. *Salmonella* prevalence was significantly higher in MLN extracted from conventional carcasses than ABF carcasses ($P = < 0.001$). We identified a total of 24 different serotypes with *S. Typhimurium*, *S. Anatum*, *S. Infantis*, and *S. Derby* being predominant. The highest frequency of antimicrobial resistance (AR) was exhibited to tetracycline (71%), sulfisoxazole (42%) and streptomycin (17%). Multidrug resistance (resistance to ≥ 3 antimicrobials; MDR) was detected in 27% (n=254) of the *Salmonella* isolates from the conventional system. Our study reports a low prevalence of *Salmonella* in both production systems in pigs on farms while a higher prevalence was detected among the carcasses at slaughter. The dynamics of *Salmonella* prevalence in pigs and carcasses were reciprocated in the farm

and slaughter environment clearly indicating an exchange of this pathogen between the pigs and their surroundings. Furthermore, the phenotypic and genotypic fingerprint profile results underscore the potential role played by environmental factors in dissemination of AR *Salmonella* to pigs.

INTRODUCTION

Salmonella is a major bacterial foodborne pathogen causing infection in both humans and animals (1). In the United States, *Salmonella* is responsible for the highest number of foodborne related illnesses with a reported 1.4 million illnesses, 15,000 hospitalizations and deaths of more than 500 people each year (2). It is important to note that the actual incidence of salmonellosis is estimated to be 38 times the number of reported cases (3). Emergence and persistence of antimicrobial resistant (AR) foodborne pathogens due to routine use of antimicrobials for therapeutic, preventive and growth purposes in conventional swine production is a major public health concern (4). Multidrug resistant (MDR) *Salmonella* strains, exhibiting resistance to third generation cephalosporins, have been reported in commercial pigs (4-7). With growing consumer concerns over AR in bacterial pathogens from commercial swine that are given antimicrobials for prophylaxis and treatment, the demand for antimicrobial free (ABF) and organic products has increased over the past decade (8). However, previous studies have highlighted the occurrence of MDR *Salmonella* in both ABF and organic food animal production despite the apparent absence of antimicrobial selection pressure (7, 9, 10).

The prevalence of *Salmonella* in swine farms in the US ranges from 1.4 to 33% (11-13). North Carolina is the second largest pork producing State in the US next to

Iowa, with a 14.4% contribution to the national inventory (19). Studies in swine production systems have been conducted in North Carolina to report *Salmonella* prevalence (6, 7, 9). Interestingly, a higher *Salmonella* prevalence (16 to 29%) has been reported in the swine farm environment than in fecal samples within the same farm (12). *Salmonella* prevalence at the processing plant ranges from 0% to 77% (14, 15). In these studies, higher prevalence of *Salmonella* at slaughter was believed to be due to transportation stress, cross contamination and the hygienic condition of the slaughter facility. Phenotypic and genotypic analyses have shown that the environment and pre-slaughter handling, such as transport and lairage, play a significant role in the dissemination of this pathogen in pigs (14, 16-18). It is quite evident that the environment plays a crucial role as a reservoir in transmission of AR pathogens to pigs all along the production chain, either directly or indirectly (6, 12, 16).

Genotyping of *Salmonella* using pulsed field gel electrophoresis (PFGE) has been found to be effective in epidemiological studies for identifying different environmental factors as important in contributing to the dynamics of pathogen transmission (6, 19, 20). However, there is a paucity of information regarding the role of the environment in dissemination of AR *Salmonella* at farm versus slaughter in ABF and conventional systems. To the authors' knowledge, no longitudinal study has been conducted along the entire production chain from farrowing to slaughter to compare the prevalence, antimicrobial resistance and genotypic diversity of *Salmonella* among swine reared in ABF and conventional production systems and their environment. The objectives of this study were to: i) determine *Salmonella* prevalence and serotype distribution in swine and their environment in two distinct swine production systems at farm and slaughter, ii)

compare the AR profiles of isolates from swine and their environment, and iii) evaluate the genotypic diversity and/or similarity among *Salmonella* isolates from swine and their environment along the production chain.

MATERIALS AND METHODS

Study design and sample source

In this longitudinal study design, a total of eight cohorts of ABF and ten cohorts of conventionally raised pigs were sampled in eight ABF and 30 conventional farms in North Carolina. In the conventional systems, pig cohorts flowed through 3 different farms at different stages of production (i.e., 10 cohorts times 3 farms per cohort = 30 farms). The conventional farms belonged to two different large-scale companies while the ABF farms were owned by individual swine producers. In the conventional system, pigs were reared indoors and followed an all-in-all-out (AIAO) production system. The purpose of an AIAO system is to reduce disease transmission from one growth stage to another (21) and in order to do so the pigs were grouped together based on age, weight and production stage and moved from one location to another at end of each stage of production (i.e., farrowing, nursery and finishing stages). Trucks were used to transport pigs from one farm to the next in line. Trucks that ferried pigs were washed and cleaned before they arrived on a farm to load pigs. In the ABF production system, pigs were housed outdoors on agricultural land and had access to the ambient environment. Pigs under the ABF production system were given non pelleted feed while the conventionally reared pigs were provided the pelleted form.

All the stages of pig life cycle under the ABF production system were at the same location but involved rotation to different pastures. The conventionally raised pigs were given antimicrobials for growth, prophylaxis and therapeutic purposes, whereas ABF pigs raised to slaughter age were not given antimicrobials for any purpose; that is, in keeping with ethical standards any ABF pig requiring treatment with antimicrobials for bacterial infection was provided such care and subsequently removed from the herd.

Sample size was calculated based on type I ($\alpha = 0.05$) and type II ($\beta = 0.20$) allowable errors and it was estimated that 27 to 35 pigs needed to be sampled to detect a statistically significant difference in the proportion of *Salmonella* positive pigs in the two production systems. We purposely selected healthy pigs at the farrowing farm with the aim of sampling the same cohort of 35 pigs at slaughter.

Sampling on farm

During each sequential visit, samples were collected from the ABF and conventional pig cohorts and their environment. Sampling was carried out from October 2008 to December 2010 at various stages of production, including once at farrowing (7-10 day old), twice at each of nursery (4 and 7 weeks of age) and finishing stages (16 and 26 weeks of age), and finally once at slaughter. During the farrowing stage, a cohort of 35 healthy piglets per farm (4 piglets/sow) were selected and ear tagged for identification; subsequently, sampling followed the same cohort of pigs at different sampling stages during farm and slaughter stages. Fresh fecal samples (10 g) were collected from piglets using sterile fecal loops (Webster Veterinary, Devens, MA) and from their respective sows, using sterile gloves to aid in the determination of the transmission of *Salmonella* from sows to piglets at birth. Similarly, fecal samples were collected from the ear tagged

pigs twice at each of nursery and finishing stages using gloved hands. Environmental samples also were collected at every stage of sampling to determine the role played by the environment as a reservoir and in the transmission of *Salmonella* to/from and among the pigs. Environmental sampling at ABF and conventional farms consisted of five samples each of water, feed, soil and barn floor swabs. All of the ABF farm environmental samples were collected outdoors whereas the conventional environmental samples were collected indoors, except for soil samples which were collected from outside the barns. In addition to these environmental samples, lagoon (repository of waste water draining from the barns) and inter-farm truck samples were collected only at conventional farms. Since trucks form an integral part of the pig environment, we sampled the four corners and the center of the truck floor by swabs pre-soaked with buffered peptone water (BPW; Difco, Becton Dickinson, Sparks, MD, USA). Similarly, the barn floor swab samples from conventional farms and the inside of hoop structures in ABF farms were collected. Overall, we collected a total of 2,889 fecal (ABF, 1,239; conventional, 1,650), 450 feed (ABF, 200; conventional, 250), 450 floor swabs (ABF, 200; conventional, 250), 449 soil (ABF, 199; conventional, 250), 448 water (ABF, 198; conventional, 250), 245 lagoon (only conventional) and 80 inter-farm truck (only conventional) samples from eight ABF and 30 (representing 10 cohorts of pigs) conventional farms and their environment. Samples were transported to the laboratory on ice at 4°C and processed immediately upon arrival.

Sampling at slaughter facility

Conventional pigs were transported to a large scale slaughter plant (9,000 pigs/day) which had a blast chilling facility (-30°C) to quickly freeze the carcasses. The ABF pigs

were transported to two smaller scale slaughter plants (250 pigs/day), each of which had an overnight chilling facility (4°C) to freeze the carcasses. These smaller scale plants slaughtered only ABF pigs. At slaughter, we collected carcass swabs from the same cohort of pigs at two stages; specifically, the post-evisceration and post-chilling stages. At the post-evisceration stage, we collected samples of mesenteric lymph node (MLN) from the pigs. Carcass swab samples were collected by wiping at three different positions (jowls, belly, and ham) on each carcass using the USDA-recommended method (22). Environmental samples from the floor of the truck transporting the pigs to the processing plant and lairage floor samples were collected and processed for *Salmonella* isolation. A total of 455 MLN (ABF, 184; conventional, 271), 454 post-evisceration carcasses swab (ABF, 182; conventional, 272), 454 post-chill carcasses swab (ABF, 199; conventional, 255), 130 lairage floor swab (ABF, 80; conventional, 50) and 75 truck floor swab (ABF, 35; conventional, 40) samples were collected. Samples were transported to the laboratory on ice and processed within three hours of collection.

***Salmonella* isolation and confirmation**

Isolation and confirmation were performed as previously described (7, 9). Briefly, the samples were pre-enriched by adding 90ml of buffered peptone water (BPW) (Difco, Becton Dickinson) to cups containing either fecal or environment samples, whereas 30 ml of BPW was added to each bag containing either MLN or carcass swabs. Before the MLN was cut into small pieces with a sterilized blade, the outside surface was cleaned with alcohol and flamed to avoid cross-contamination. Pre-enriched samples were mixed thoroughly and incubated at 37°C for 24 h. After incubation, 100µl of pre-enriched BPW suspension from each sample was transferred to 9.9 ml of Rappaport-Vassilliadis (RV)

broth (Difco, Becton Dickinson) and incubated at 42°C for 24h. A loopful (10µl) of enriched RV suspension was streaked on to a xylose lactose tergitol (XLT4) selective agar plate (Difco, Becton Dickinson) and incubated at 37°C for 24 h. To determine the phenotypic and genotypic diversity of *Salmonella* within a positive sample we selected three black-colored colonies from XLT4 and characterized them biochemically by stabbing into triple sugar iron (TSI) and urea agar slants (Difco, Becton Dickinson). Biochemical testing was interpreted from the TSI and urea agar slants; colonies with a positive TSI and negative urea tests were confirmed as *Salmonella* isolates. Further confirmation of *Salmonella* was performed by PCR amplification of a targeted *Salmonella*-specific invasive (*invA*) gene (23). The confirmed *Salmonella* isolates were appropriately labeled and stored in Brucella broth (Difco, Becton Dickinson) at -80°C for further characterization.

***Salmonella* serotyping**

All *Salmonella* isolates (n=1,090) were serotyped using one of three methods. Initially, a multiplex PCR was performed to scan the entire isolate set to identify *Salmonella* Typhimurium using published primers and protocols (24, 25). The template DNA for this multiplex PCR was purified using Qiagen DNeasy Blood and Tissue Kit (Qiagen, Germany) according to the manufacturer's protocol. In the second approach, PFGE fingerprint profiles were generated for a subset of 86 isolates and the serotypes were identified by matching their fingerprint profiles with a database of previously confirmed *Salmonella* serotypes (26-28). The remaining isolates (n=684) were sent to the National Veterinary Services Laboratories (NVSL) for traditional phenotypic serotyping.

Antimicrobial susceptibility testing

All the confirmed *Salmonella* isolates (n=1,090) from pigs and the environment were tested against a panel of 15 antimicrobials by the broth micro dilution method (Trek Diagnostic Systems, Inc., Cleveland, OH). The panel of antimicrobials tested, along with their respective concentration ranges increasing twofold, included: amikacin (AMI; 0.5-64), ampicillin (AMP; 1-32), amoxicillin/clavulanic Acid (AUG; 0.5-32/16), ceftriaxone (AXO; 0.25-64), cefoxitin (FOX; 0.5-32), ceftiofur (TIO; 0.25-8), chloramphenicol (CHL; 2-32), ciprofloxacin (CIP; 0.015-2), gentamicin (GEN; 0.25-16), kanamycin (KAN; 8-64), nalidixic acid (NAL; 0.5-32), sulfisoxazole (FIS; 16-256), streptomycin (STR; 32-64), trimethoprim/sulfamethoxazole (SXT; 0.12/2.38-4/76), and tetracycline (TET; 4-32). Briefly, 10 µl of bacterial culture (adjusted to a 0.5 McFarland standard) was transferred to 11 ml of Mueller-Hinton broth. Using the Sensititre® semi-automated system (Trek Diagnostic Systems, Inc., Cleveland, OH), 50 µl of Mueller-Hinton broth was distributed to each well in a 96-well Sensititre® CMV1AGNF plate (Trek Diagnostic Systems, Inc., Cleveland, OH). The plates were sealed and incubated at 37°C for 24 h. *Escherichia coli* ATCC25922 strain was used for quality control. The MICs were recorded and breakpoints were determined based on Clinical Laboratory Standards Institute (CLSI) recommendations where available (29). National Antimicrobial Resistance Monitoring System (NARMS) consensus breakpoints were used where CLSI breakpoints were indeterminate (5). Those isolates exhibiting resistance to three or more antimicrobials were considered multidrug resistant (MDR).

Pulsed Field Gel Electrophoresis (PFGE) analysis

A total of 340 *Salmonella* isolates representing different sampling stages, types of samples, serotypes and AR profiles (Fig. 4) from pigs (ABF, 36; conventional, 100) and

environment (ABF, 32; conventional, 172) were genotyped by PFGE using the CDC's PulseNet protocol (30). Briefly, *Salmonella* isolates were grown overnight on LB agar plates. The culture cells were added to cell suspension buffer (CSB) and the concentration was adjusted between optical densities (OD) of 0.48 - 0.52 using a Dade Microscan turbidity meter. The OD adjusted bacterial cell suspension (400 μ l) was lysed using proteinase K (20mg/ml) and intact genomic DNA was digested with 50U of *Xba*I (Roche, USA) restriction enzyme in agarose-embedded plugs. The restriction fragments were separated by electrophoresis in 0.5X TBE buffer, 1% ultra pure agarose (Seakem Gold Agarose, Lonza, Maine, USA) for 18h at 14°C in a PFGE (CHEFF DR III, BioRad, USA) using pulsed times of 2.2 to 63.8s. The *Xba*I digested *S. Braenderup* H9812 strain was used as the reference DNA marker. Gels were stained with ethidium bromide (10 mg/ml) for 30 min in 400ml of reagent grade water, followed by two washings with nanopure water and photographed under UV light. The PFGE images were analyzed by BioNumerics software version 6.1 (Applied Maths, Belgium). Clonal relationships among these isolates were determined using the unweighted-pair group method using average linkages (UPGMA), with band position tolerance and optimization of 1.5% each.

Statistical Analysis

Statistical analysis was carried out using STATA version 12.1 (Stata Corp, College Station, Texas). Descriptive analysis comparing farm types (ABF versus conventional) consisting of unique longitudinal cohorts (which were nested within each farm type) was carried out before pursuing multivariable analyses. Each farm type, along with the stage of production and type of sample collected for isolation of *Salmonella* was also considered for descriptive analysis before forcing these variables for multivariable

modeling. Contingency table analyses without adjustments for clustering by cohort/farm type were carried out using likelihood ratio (LR) χ^2 test statistics for each of the variable/s types and used to examine their association with *Salmonella* prevalence. The LR χ^2 test for *Salmonella* prevalence was also carried out for the source of sampling and stages of production. Separate multivariable analyses for pigs versus their environment were carried out using the logistic regression procedure (XTLOGIT) with either random effects (RE) or generalized estimating equation (GEE) models. The XTLOGIT procedure was used instead of XTMELOGIT (multi-level hierarchical logistic regression) because of problems achieving convergence in XTMELOGIT given the high numbers of zero cells in the ABF farm type. The main effects of farm type, stage of production, and sample type along with their 2-way and 3-way interaction terms were tested. The final full factorial RE or GEE model was constructed for both main effects and their interaction terms. The final significant model (all variable sets $P < 0.05$) was selected based on the associations of these variables and their interaction terms with the prevalence of *Salmonella*. The same procedure was repeated by forcing cohorts (farm types) for robust variance estimation and compared. From the final model marginal predictions were obtained for the proportion of positive *Salmonella* and these were estimated with 95% confidence intervals. The marginal means were plotted using final predictions from the full factorial RE or GEE models for: 1) *Salmonella* prevalence among pigs by farm type and different stages of production, 2) *Salmonella* prevalence in environmental samples by farm type and different stages of production, and 3) *Salmonella* prevalence in environmental samples by farm type and different stages of production accounting for sample type differences.

RESULTS

***Salmonella* prevalence in pigs and the environment at farms**

A total of 1,090 *Salmonella* isolates were isolated from the all samples collected in the study population. The overall proportion of samples that were positive for *Salmonella* was higher in the conventional production system, both in pigs (66/1,650, 4%) and the environment (156/1,325, 11.7%) when compared to ABF pigs (2/1,239, 0.16%) and the environment (5/797, 0.6%). The multivariable analysis using logistic regression generated the final significant model (all variables $P < 0.05$), which was selected based on the associations of these variables and their interaction terms with the estimated prevalence of *Salmonella* and plotted along with 95% confidence intervals (Fig 1-3). The breakdown of *Salmonella* isolated from pigs and the environment samples by farm, type of farm and stage of production are highlighted in Table 1 and Table 2, respectively. Overall there were statistically significant differences ($P < 0.05$) between the proportion of samples positive for *Salmonella* in ABF (2/1,239, 0.16%) and conventional (66/1,650, 4%) pigs at the following different sampling stages: farrowing (ABF, 0% ; conventional, 6.7%), nursery 1 (ABF, 0.7% ; conventional, 8.8%), nursery 2 (ABF, 0.2%; conventional, 7.2%), finishing 1 (ABF, 0.2%; conventional, 6.7%), finishing 2 (ABF, 0.5% ; conventional, 7.7%) (Fig. 1).

The overall *Salmonella* prevalence in the environmental samples on conventional farms (156/1,325, 11.7%) was higher than in the ABF farms (5/797, 0.62%). At both farrowing and nursery 1 stages, all the environmental samples from the ABF production system were negative for *Salmonella* (Fig. 2). Overall, the marginal mean predictions for

Salmonella in the conventional farm environment were significantly higher than in the ABF farm environment. At nursery 1 (ABF, 1.2%; conventional, 13.5%), finishing 1 (ABF, 0.6%; conventional, 12.5%), finishing 2 (ABF, 1.2%; conventional, 11.8%). On the conventional farms, *Salmonella* was successfully recovered from water, soil, feed, floor swabs, lagoons, and truck samples. Among all the environmental samples, the *Salmonella* mean prediction was higher in lagoons when compared to other environmental samples (Fig 3); on the other hand, on ABF farms only water (nursery 1, 4.8%) and feed (finishing 1, 0.6%; finishing 2, 1.2%) samples were positive for *Salmonella* (Fig. 3).

***Salmonella* prevalence in carcasses and the environment at slaughter**

Overall, the proportion of positive samples for *Salmonella* was significantly higher in MLN from conventional carcasses than ABF carcasses ($P < 0.001$). However, the prevalence of *Salmonella* in post evisceration and post chill carcass swabs was higher in ABF carcasses than conventional carcasses. There was a statistically significant difference between the post-evisceration swabs ($P=0.008$) of ABF carcasses and conventional carcasses. The marginal prediction for *Salmonella* was highest in MLN (ABF, 11.3%; conventional, 26.3%), post evisceration swabs (ABF, 7.1%; conventional, 2.2%) and post chill swabs (ABF, 2.5%; conventional, 0.39%) (Fig. 1). *Salmonella* were also isolated from the slaughter environment. Overall, the prevalence of *Salmonella* was highest in the conventional slaughter environment (38.8%) than in ABF (18.6%) environmental samples, with the highest marginal prediction in lairage (ABF, 26.2%;

conventional, 46%) followed by conventional truck (30%) samples. On the other hand, no ABF truck samples tested positive for *Salmonella*.

Identification and distribution of *Salmonella* serotypes

Three different methods were used to identify the different serotypes. *S. Typhimurium* (n=320) were identified by using multiplex PCR and other serotypes by fingerprint profile matching and by traditional phenotypic serotyping at NSVL. We identified 24 *Salmonella* serotypes among the ABF and conventional pigs and the environment at farm and slaughter (Table 3). The ABF and conventional production systems had certain unique *Salmonella* serotypes which were unevenly distributed in each of the respective production systems at farm and slaughter. Certain serotypes, including *S. Anatum*, *S. Infantis*, and *S. Typhimurium*, were isolated from both production systems. The predominant *Salmonella* serotypes in the ABF system on the farm were *S. Anatum* (pigs, 60%; environment, 21.4%), *S. Give* (pigs, 40%; environment, 42.8%), and *S. Typhimurium* (pigs, 0; environment, 21.4%). At slaughter, *S. Anatum* (carcass, 10.4%; environment, 28.5%) and *S. Infantis* (carcass, 39.5%; environment, 60.3%) were the predominant serotypes. *S. Give* was identified only in the ABF system at farm and slaughter. At ABF slaughter, we identified specific serotypes which were not found at the farm level such as, *S. Infantis*, *S. Braenderup*, *S. Derby*, *S. Inverness*, *S. Muenchen*, *S. Newport*, and *S. London* (Table 3). The conventional system had a greater variety of serotypes at farm and slaughter (Table 3). On the farm, the major serotypes identified were *S. Typhimurium* (pigs, 28.5% of isolates; environment, 35% of isolates), *S. Infantis* (pigs, 16.4%; environment, 13.8%), *S. Anatum* (pigs, 15.8%; environment, 12%), and *S.*

Rissen (pigs, 3%; environment, 8.8%). The *S. Rissen* serotype was reported for the first time in pigs in the US. At conventional slaughter, the major serotypes were *S.*

Typhimurium (carcasses, 37%; environment, 30%) followed by, *S. Derby* (carcasses, 35.5%; environment, 1%), and *S. Infantis* (carcasses, 6.5%; environment, 48.4%).

Antimicrobial Resistance profile of *Salmonella*

The overall MIC distribution and prevalence of AR *Salmonella* isolates from pigs and their environment at different stages on farm and slaughter are represented in Table 4. A total of 1,090 *Salmonella* isolates were tested (ABF, n=168; conventional, n=922) against a panel of 15 antimicrobials. AR was higher in conventional isolates (resistant, 80%; pansusceptible, 20%) when compared to ABF isolates (resistant, 27%; pansusceptible, 73%). Overall, *Salmonella* isolates exhibited a wide spectrum of AR with the highest frequency of resistance to TET (70.6%), followed by FIS (41.6%) and STR (17.3%). In addition, *Salmonella* isolates exhibited resistance to β -lactams including cephalosporins with highest frequency of resistance to AMP (12.1%), FOX (4.4%), AXO and TIO (4% each). All the isolates from both production systems were susceptible to AMI and CIP. A 'squashtogram' was generated both to illustrate and compare resistance and MIC distribution of *Salmonella* isolates from pigs and the environment in the conventional production system (Table 5). *Salmonella* isolates from pigs and the environment exhibited similar AR profiles and MIC distributions for predominant antimicrobials with the exception of TET. Most of the environmental isolates which were resistant to TET had MIC of either 16 $\mu\text{g/mL}$ (0.4%) or 32 $\mu\text{g/mL}$ (78%); on the other hand, the isolates from pigs had MIC of 32 $\mu\text{g/mL}$ (1%) and >32 $\mu\text{g/mL}$ (79%). We observed the highest

frequency of resistance in conventional isolates to TET (pigs, 80.3%; environment, 78.3%), followed by FIS (pigs, 56%; environment, 43.4%), STR (pigs, 27.7%; environment, 14.5%) and AMP (pigs, 13.9%; environment, 14.1%).

Distribution and association of MDR patterns with *Salmonella* serotypes

We observed a higher frequency of MDR isolates from the conventional system at various stages of production. Conventional isolates had different MDR patterns (27.5 %, 254/922) associated with various serotypes. The most common MDR patterns, associated serotypes and distribution are presented in Table 6. The FIS STR TET (n=72) was the predominant MDR pattern we found on farm (pigs, 3%; environment, 21%) and slaughter (carcasses, 75%; environment, 1%) associated with the serotype *S. Derby*. Two major MDR patterns were associated with *S. Anatum*, namely: AMP AUG AXO FOX TIO TET (n=25), which was found only at the farm level (pigs, 44%; environment, 56%), and AMP AUG AXO FOX TIO (n=5), which was identified only with farm (40%) and slaughter (60%) environmental isolates. *S. Typhimurium* was associated with five major MDR patterns, with the most common MDR pattern, AMP CHL FIS STR TET (n=41), a penta-resistant pattern common to *S. Typhimurium* DT104, found at both farm (pig, 12%; environment, 41%) and slaughter (carcasses, 39%; environment, 7%). The FIS SXT TET (n=25) was observed in farm and slaughter environments (32%) and carcasses (36%). FIS STR TET (n=18) was found only at slaughter in carcasses (61%) and environment (39%). *Salmonella* serotypes *S. Anatum* and *S. Typhimurium* with MDR patterns highlighting β - lactams including cephalosporins (AMP AUG AXO FOX TIO TET) were found only at farm level. *S. Heidelberg* had a specific MDR pattern (KAN STR TET)

that we found only in the environment (100%). In the ABF system, we found only one isolate with an MDR pattern (AMP CHL FIS STR TET) associated with *S. Typhimurium* isolated from a carcass swab at slaughter.

Pulsed Field Gel Electrophoresis (PFGE)

Salmonella isolates (n=340) from pigs and the environment were genotyped by PFGE. Restriction analyses by *Xba*I produced on average 10-16 bands and distributed the 340 isolates into 58 major clusters consisting of isolates with similar PFGE profiles, and another 53 unique PFGE patterns represented by a single isolate each (Fig. S1). Two separate dendrograms were created representing genotypic similarity within the same flow at different stages of production of the two distinct production systems (Fig. 4 and 5). *S. Infantis* isolated from lairage and carcass swabs originating from ABF pigs of two cohorts (A2 and A3) had 100% similar fingerprint profiles (Fig. 4). Within the conventional production system, we found 100% genotypic similarity among *S. Rissen* isolated from pig fecal, MLN, environmental samples including feed, water, floor swab and lagoon at nursery 1, nursery 2, finishing 2 and slaughter representing the same flow (C3) (Fig. 5). Identical fingerprint patterns were detected (cluster 14; Fig. S1) among *S. Infantis* isolates from pig and environmental samples of the same flow (C6) at different stages including farrowing (isolate ID: S548, 551, 575, 581 and 591), nursery 1 (isolate ID: S783 and 789), finishing 1 (isolate ID: S963 and 984) and slaughter (isolate ID: S1184 and 1195). Furthermore, we found 100% genotypic similarity among *S. Infantis* (FIS TET pattern) isolated from the conventional production system at farrowing, nursery 1, finishing 1 and slaughter including slaughter truck samples (cluster 14; Fig. S1). All of

the genotypically similar pansusceptible *S. Infantis* isolates at slaughter were grouped in respective clusters (clusters 17, 18, 19, and 20; Fig. S1). The fingerprint profile of *S. Anatum* isolated from the ABF and conventional production systems at different stages of production and sample type were grouped into four major clusters (clusters 9, 10, 11 and 12; Fig. S1). Even though the ABF and conventional slaughter facilities were different, we identified a fingerprint profile (cluster 10; Fig. S1) associated with *S. Anatum* highlighting 100% genotypic similarity between the ABF and conventional production system, which includes isolates from pigs and environment samples at farm and slaughter.

Discussion

This longitudinal study was conducted to determine and compare AR *Salmonella* at their phenotypic and genotypic levels, isolated from pigs and the environment of both ABF and conventional production systems at different stages of production from farm to slaughter. The prevalence of *Salmonella* in the conventional pigs was significantly higher than the ABF pigs at both farm and slaughter, which is in contrast to an earlier study that reported a higher prevalence of *Salmonella* in an ABF production system (7). The low prevalence of *Salmonella* in outdoor ABF pigs at the farm in the present study was in accordance with other previous findings (9). We observed an increase in the prevalence of *Salmonella* in the final stages of production (finishing 1&2) in the conventional system, similar to previous reports of higher prevalence of *Salmonella* among finishing herds. The likely reasons include a previously infected group of pigs at the farm, contaminated transport vehicles or handling and close contact of pigs during

transportation (6, 12, 31). Higher prevalence of *Salmonella* in pigs during the final stages of production is of greater concern from a public health and food safety perspective. Only a few studies have been conducted to highlight the prevalence of *Salmonella* in the ABF versus the conventional farm environment (6, 7, 9, 32). In the ABF farm environment, *Salmonella* was only detected in three feed and two water samples at nursery 1 and finishing stages, in contrast to the conventional farm where positive environmental samples were widely represented by water, soil, feed, floor swabs, lagoon and truck at different stages of production. The detection of *Salmonella* in feed samples of ABF and conventional farm A higher number of conventional environmental samples were positive for *Salmonella*, in spite of strict AIAO practices. This highlights the potential role of the farm environment as a reservoir, which is in accordance with studies highlighting the persistence of *Salmonella* in the farm environment for several months to years (33, 34). Even though the ABF pigs had access to the external environment throughout their production chain, the prevalence of *Salmonella* in pigs was low which may be attributed to the absence/low prevalence of *Salmonella* in the ABF environment.

In our study, we found a higher prevalence of *Salmonella* in both production systems at slaughter in both pigs and the environment when compared to prevalence at the farm. Factors contributing to the increased prevalence of *Salmonella* at slaughter likely include cross contamination at peri-harvest stage by trucks involved in transfer to the slaughtering facilities, stress experienced by the pigs during transport, cross contamination at lairage and at post-harvest stages (16, 17, 20). In addition, a previous study highlighted that contaminated feed at the end stage of production have significant role in dissemination of *Salmonella* (19). We detected clear evidence of cross

contamination in our study as shown in clusters 7, 8, 14, 17, 18 and 26 (Fig 4). The MLN samples from both production systems had a higher prevalence of *Salmonella* when compared to fecal samples at the farm, which is in accordance with previous reports suggesting occurrence of *Salmonella* in the gastrointestinal (GI) tract and lymphatic tissue in carrier pigs (6, 14, 17). Even though the MLN and gut contents are not used for consumption, occurrence of *Salmonella* in the MLN may act as a reservoir in contaminating carcasses during the post-evisceration stage. We also isolated *Salmonella* from the post-evisceration carcasses, which were cleansed with water before they were stored in the chilling facility. This indicates possible cross contamination during the evisceration process along the slaughter chain. The ABF slaughter facility had overnight chilling of the carcass, whereas the conventional slaughter facility had blast chilling. Blast chilling is preferred to overnight cooling because it improves the meat shelf life and tenderness and it prevents the growth of important foodborne pathogens on the carcass surface (35, 36). Interestingly, we isolated *Salmonella* from both the systems in post-chill swabs irrespective of the chilling facility type. The occurrence of *Salmonella* in post-chill swabs (9) is of critical importance to public health and food safety, as because this sample closely represents the final retail product. In this study, we also isolated *Salmonella* from truck floors, which are used to transport conventional and ABF pigs from farm to slaughter. The most significant contribution to positive samples for *Salmonella* at slaughter was from lairage swabs, where pigs rest for about two hours before they are slaughtered. It takes less than two hours for a particular *Salmonella* serotype to establish in the GI tract of pigs and to be shed in their feces (16, 17). Clusters 7 and 8 (Fig. 4) highlight similar PFGE fingerprint profiles among *Salmonella* isolates

from ABF carcass and lairage swabs. However, the detection of *Salmonella* in ABF carcass samples, despite the absence of *Salmonella* at the farm and in transport trucks, clearly highlights the role of lairage and cross-contamination of the carcasses during processing.

Previous studies from Denmark reported various serotypes from organic and outdoor pig farming, including: *S. Anatum*, *S. Agona*, *S. Derby*, *S. Typhimurium* and *S. Newport*, also observed in our ABF isolates (32, 37). However, in the ABF system at the farm and slaughter, we identified the *S. Give* serotype which is most commonly associated with cattle (38). The likely reason for this serotype was the presence of other animals, including cattle, on the same premises as the pigs in the ABF farms and perhaps outdoor access to pastures which might be an ecological niche. In addition, identification of specific serotypes (Table 3) in ABF carcass and processing plant environmental samples, which were not detected at the farm level, suggests the role of the slaughter environment as a source for cross-contamination. Identification of serotypes, including: *S. Agona*, *S. Braenderup*, *S. Deby*, *S. Inverness*, *S. Muenchen* and *S. Newport* on ABF carcass which were not found at farm and slaughter environment (Table 3), attributes to the slaughter robots including, carcass splitter and other instruments used for processing the carcass as a possible source of contamination during production chain as described (39). We observed some common serotypes in the ABF and conventional production systems including *S. Anatum*, *S. Infantis*, and *S. Typhimurium*. This is in accordance with a Centers for Disease Control and Prevention (CDC) report of the top four predominant serotypes in swine (40). In the conventional production system, we identified for the first time *S. Rissen* in pigs and the environment. *S. Rissen* is one of the

top ten serotype most commonly isolated from pigs since 2004 in Europe (41) and most common non-human serotype in Asian countries (42). According to the CDC annual report, *S. Rissen* was isolated from humans (< 20 isolates per year) from 1999 to 2007 and there were no reports of its occurrence in food animals in the US (41, 43). This serotype is uncommon in the US; it was reported to have entered the US in late 2008 and early 2009 through imported white pepper, resulting in a human outbreak in northern California and Nevada (44). We identified this serotype in our samples collected in late 2009.

Salmonella isolates from conventional production had higher AR (80%) than isolates from ABF production (27%). The use of antimicrobials in the conventional system for treatment and growth purposes likely results in a higher prevalence of *Salmonella* as previously reported (7, 45). Overall, *Salmonella* isolates of either production system or production stage had the highest frequency of resistance against TET (71%), followed by FIS (42%) and STR (17%). In addition, isolates exhibited resistance to β -lactams, including third generation cephalosporins. These results are in agreement with previous reports (6, 7, 46). MIC distribution was similar for all the antimicrobials tested except TET, which was highest in *Salmonella* isolates of pig origin (MIC > 32 μ g/mL; resistance: 80%) when compared to environmental isolates in the conventional system. The possible reasons may be use of tetracyclines as growth promoters administered in feed of growing pigs in our study, which has been reported extensively in the swine industry (47, 48). We detected a higher frequency of MDR isolates in the conventional system (27%) but only a single MDR isolate from the MLN of an ABF carcass exhibiting a penta-resistant pattern of AMP CHL FIS STR TET

associated with *S. Typhimurium*. This result is in contrast with a previous report of higher MDR prevalence in an ABF system (7). In the conventional system, *S. Typhimurium* was broadly associated with the common MDR pattern of AMP CHL FIS STR TET at farm and slaughter as previously reported (6, 49). This penta-resistant pattern is common to the *S. Typhimurium* phage type DT104 (50). Identification of this phage type, both at farm and slaughter, is of significant public health concern because this phage type is commonly associated with human foodborne outbreaks worldwide (50, 51). Another important MDR pattern with β -lactams, including third generation cephalosporins (AXO TIO), was associated with *S. Typhimurium* and *S. Anatum* only in conventional pigs and the environment at farm level, as previously reported (6). Emergence of these MDR patterns resistant to β -lactams is of concern because β -lactams (third generation cephalosporins) are extensively used to treat human clinical *Salmonella* infections (52).

PFGE was used to genotype a representative subset of *Salmonella* isolates from pigs and the environment. PFGE is considered the gold standard test to determine the source of *Salmonella* in epidemiological studies (12, 14). Therefore, we used this genotyping method to determine whether a similar *Salmonella* genotype is disseminated from farm to slaughter along the production chain. Based on similar fingerprint profiles, *Salmonella* isolates in our study were grouped in 58 major clusters. Clustering was consistent with serotypes and resistance patterns as reported by a previous study. In addition, we observed fingerprint profile diversity among the same *Salmonella* serotypes representing different clusters as previously reported (19, 28, 33). Within the conventional production system, 100% genotypic similarity was observed among *S.*

Rissen serotype isolates from pig fecal and environmental samples at different stages of production at farm and slaughter from a single cohort (C3). This result highlights the dissemination of relatively new *S. Rissen* serotype in pigs all along the production chain in the US. It was evident that specific serotypes, including *S. Anatum*, *S. Infantis*, *S. Tyhimurium*, *S. Ouakam*, *S. Give* and *S. Ohio*, were able to persist in the pigs and environment at different stages of production based on phenotypic and genotypic evidence (Table 3; Fig. S1 clusters 7, 10, 14, 31, 37 and 42). The identification of genotypically identical *S. Infantis* from the slaughter environment and carcass samples from the ABF system, which were not observed at the farm level, highlights the importance of the slaughter environment from a food safety perspective. In an epidemiological study it is difficult to determine the exact mechanism and direction of pathogen transmission between pigs and the environment. However, detection of the same genotype among pigs and environment within distinct production systems clearly suggests the exchange of *Salmonella* strains.

To summarize, this study demonstrates the presence of AR *Salmonella* in ABF and conventional production systems at farm, slaughter and the environment though at much lower levels in ABF than in conventional systems. The phenotypic and genotypic fingerprint profile results underscore the potential role played by the environment in the persistence and dissemination of transmission of AR *Salmonella* in the two production systems. We detected MDR isolates throughout all the production stages and the environment in the conventional system, which uses antimicrobials for prophylaxis and growth purposes. The detection of AR *Salmonella* in ABF pigs and their environment in the absence of selection pressure is a concern. At the phenotypic level, *Salmonella*

isolates from the lairage floor, carcass and MLN had similar resistance patterns and serotypes, which were not detected at the farm level. This highlights the importance of the farm and slaughter environment as separate but important reservoirs and as a crucial link to determining the dissemination of AR *Salmonella* among pigs. Future research should focus on environmental factors to develop a better understanding of the molecular epidemiology of this pathogen in the swine production environment and to reduce the burden of AR *Salmonella* on public health.

ACKNOWLEDGEMENTS

We thank the swine producers and swine processing plants for providing us access to their facilities. This work was funded by a U.S. Department of Agriculture National Research Initiative grant (2008-529245), a U.S. Department of Agriculture National Integrated Food Safety Initiative grant (2008-529461), the National Pork Board grant (NPB project # 12-001), and a North Carolina State University Individual Faculty Research and Professional Development Award to Dr. Siddhartha Thakur.

REFERENCES

1. **Lynne AM, Dorsey LL, David DE, Foley SL.** 2009. Characterisation of antibiotic resistance in host-adapted *Salmonella enterica*. Int. J. Antimicrob. Agents. **34**:169-172.
2. **Scallan E, Hoekstra R, Angulo F, Tauxe R, Widdowson M, Roy S, Jones J, Griffin P.** 2011. Foodborne illness acquired in the United States-major pathogens. Emerg. Infect. Dis. **17**:7-15.
3. **Voetsch AC, Van Gilder TJ, Angulo FJ, Farley MM, Shallow S, Marcus R, Cieslak PR, Deneen VC, Tauxe RV, Group EIPFW.** 2004. FoodNet estimate of the burden of illness caused by nontyphoidal *Salmonella* infections in the United States. Clin. Infect. Dis. **38 Suppl 3**:S127-134.
4. **Aarestrup FM, Oliver Duran C, Burch DG.** 2008. Antimicrobial resistance in swine production. Anim. Health. Res. Rev. **9**:135-148.
5. **NARMS.** 2009. National Antimicrobial Resistance Monitoring System:Executive Report, p. 1-105.
6. **Dorr P, Tadesse D, Zewde B, Fry P, Thakur S, Gebreyes W.** 2009. Longitudinal study of *Salmonella* dispersion and the role of environmental contamination in commercial swine production systems. Appl. Environ. Microbiol.**75**:1478-1486.

7. **Gebreyes W, Thakur S, Morrow W.** 2006. Comparison of prevalence, antimicrobial resistance, and occurrence of multidrug-resistant *Salmonella* in antimicrobial-free and conventional pig production. *J. Food. Prot.* **69**:743-748.
8. **USDA.** September 2009. Organic agriculture:organic market overview. U.S. Department of Agriculture, Economic Research Service, Washington, DC.
<http://www.ers.usda.gov/briefing/organic/demand.htm>.
9. **Thakur S, Tadesse D, Morrow M, Gebreyes W.** 2007. Occurrence of multidrug resistant *Salmonella* in antimicrobial-free (ABF) swine production systems. *Vet.Microbiol.* **125**:362-367.
10. **Ray KA, Warnick LD, Mitchell RM, Kaneene JB, Ruegg PL, Wells SJ, Fossler CP, Halbert LW, May K.** 2006. Antimicrobial susceptibility of *Salmonella* from organic and conventional dairy farms. *J. Dairy. Sci.***89**:2038-2050.
11. **Davies PR, Bovee FG, Funk JA, Morrow WE, Jones FT, Deen J.** 1998. Isolation of *Salmonella* serotypes from feces of pigs raised in a multiple-site production system. *J. Am. Vet. Med. Assoc.* **212**:1925-1929.
12. **Rodriguez A, Pangloli P, Richards H, Mount J, Draughon F.** 2006. Prevalence of *Salmonella* in diverse environmental farm samples. *J. Food. Prot.* **69**:2576-2580.
13. **Barber DA, Bahnson PB, Isaacson R, Jones CJ, Weigel RM.** 2002. Distribution of *Salmonella* in swine production ecosystems. *J. Food. Prot.* **65**:1861-1868.

14. **Botteldoorn N, Heyndrickx M, Rijpens N, Grijspeerdt K, Herman L.** 2003. *Salmonella* on pig carcasses: positive pigs and cross contamination in the slaughterhouse. *J. Appl. Microbiol.* **95**:891-903.
15. **De Busser EV, Maes D, Houf K, Dewulf J, Imberechts H, Bertrand S, De Zutter L.** 2011. Detection and characterization of *Salmonella* in lairage, on pig carcasses and intestines in five slaughterhouses. *Int. J. Food. Microbiol.* **145**:279-286.
16. **Hernández M, Gómez-Laguna J, Luque I, Herrera-León S, Maldonado A, Reguillo L, Astorga RJ.** 2013. *Salmonella* prevalence and characterization in a free-range pig processing plant: Tracking in trucks, lairage, slaughter line and quartering. *Int. J. Food. Microbiol.* **162**:48-54.
17. **Hurd H, Gailey J, McKean J, Rostagno M.** 2001. Rapid infection in market-weight swine following exposure to a *Salmonella* Typhimurium-contaminated environment. *Am. J. Vet. Res.* **62**:1194-1197.
18. **Botteldoorn N, Herman L, Rijpens N, Heyndrickx M.** 2004. Phenotypic and molecular typing of *Salmonella* strains reveals different contamination sources in two commercial pig slaughterhouses. *Appl. Environ. Microbiol.* **70**:5305-5314.
19. **Molla B, Sterman A, Mathews J, Artuso-Ponte V, Abley M, Farmer W, Rajala-Schultz P, Morrow W, Gebreyes W.** 2010. *Salmonella* enterica in commercial swine feed and subsequent isolation of phenotypically and genotypically related strains from fecal samples. *Appl. Environ. Microbiol.* **76**:7188-7193.

20. **Gebreyes W, Davies P, Turkson P, Morrow W, Funk J, Altier C, Thakur S.** 2004. Characterization of antimicrobial-resistant phenotypes and genotypes among *Salmonella* enterica recovered from pigs on farms, from transport trucks, and from pigs after slaughter. J. Food. Prot. **67**:698-705.
21. **Owsley F, Rodning S, Floyd J.** 2013. Scheduling All-In/All-Out Swine Production <http://www.aces.edu/pubs/docs/A/ANR-0847/ANR-0847.pdf>, vol. ANR-0847. Alabama Cooperative Extension System.
22. **USDA.** 1996. Guidelines for Escherichia coli testing for process control verification in cattle and swine slaughter establishments. http://www.fsis.usda.gov/PDF/Guideline_for_Ecoli_Testing_Cattle_Swine_Estab.pdf.
23. **Oliveira S, Santos L, Schuch D, Silva A, Salle C, Canal C.** 2002. Detection and identification of salmonellas from poultry-related samples by PCR. Vet. Microbiol. **87**:25-35.
24. **Kim S, Frye J, Hu J, Fedorka-Cray P, Gautom R, Boyle D.** 2006. Multiplex PCR-based method for identification of common clinical serotypes of *Salmonella* enterica subsp enterica. J. Clin. Microbiol. **44**:3608-3615.
25. **Alvarez J, Sota M, Vivanco A, Perales I, Cisterna R, Rementeria A, Garaizar J.** 2004. Development of a multiplex PCR technique for detection and epidemiological typing of *Salmonella* in human clinical samples. J. Clin. Microbiol. **42**:1734-1738.

26. **Zou W, Lin WJ, Foley SL, Chen CH, Nayak R, Chen JJ.** 2010. Evaluation of pulsed-field gel electrophoresis profiles for identification of *Salmonella* serotypes. J. Clin. Microbiol. **48**:3122-3126.
27. **Zou W, Lin WJ, Hise KB, Chen HC, Keys C, Chen JJ.** 2012. Prediction system for rapid identification of *Salmonella* serotypes based on pulsed-field gel electrophoresis fingerprints. J. Clin. Microbiol. **50**:1524-1532.
28. **Liebana E, Guns D, Garcia-Migura L, Woodward MJ, Clifton-Hadley FA, Davies RH.** 2001. Molecular typing of *Salmonella* serotypes prevalent in animals in England: assessment of methodology. J. Clin. Microbiol. **39**:3609-3616.
29. **CLSI.** 2010. Performance Standards for Antimicrobial Susceptibility Testing; Twentieth Informational Supplement, p. 40-45, vol. 30.
30. **Ribot EM, Fair MA, Gautom R, Cameron DN, Hunter SB, Swaminathan B, Barrett TJ.** 2006. Standardization of pulsed-field gel electrophoresis protocols for the subtyping of *Escherichia coli* O157:H7, *Salmonella*, and *Shigella* for PulseNet. Foodborne. Pathog. Dis. **3**:59-67.
31. **Rodríguez-Buenfil JC, Alvarez-Fleites M, Segura-Correa JC.** 2006. Incidence of salmonellosis and identification of serogroups and serotypes in a pig commercial farm in Yucatan. Rev. Latinoam. Microbiol. **48**:10-13.
32. **Jensen AN, Dalsgaard A, Stockmarr A, Nielsen EM, Baggesen DL.** 2006. Survival and transmission of *Salmonella enterica* serovar Typhimurium in an outdoor organic pig farming environment. Appl. Environ. Microbiol. **72**:1833-1842.

33. **Sandvang D, Jensen LB, Baggesen DL, Baloda SB.** 2000. Persistence of a *Salmonella* enterica serotype Typhimurium clone in Danish pig production units and farmhouse environment studied by pulsed field gel electrophoresis (PFGE). FEMS. Microbiol. Lett. **187**:21-25.
34. **Baloda SB, Christensen L, Trajcevska S.** 2001. Persistence of a *Salmonella* enterica serovar Typhimurium DT12 clone in a piggery and in agricultural soil amended with Salmonella-contaminated slurry. Appl. Environ. Microbiol. **67**:2859-2862.
35. **Nesbakken T, Eckner K, Røtterud OJ.** 2008. The effect of blast chilling on occurrence of human pathogenic *Yersinia enterocolitica* compared to *Campylobacter spp.* and numbers of hygienic indicators on pig carcasses. Int. J. Food. Microbiol. **123**:130-133.
36. **Shackelford SD, King DA, Wheeler TL.** 2012. Chilling rate effects on pork loin tenderness in commercial processing plants. J. Anim. Sci. **90**:2842-2849.
37. **Jensen AN, J. Lodal, and D. L. Baggesen.** 2004. High diversity of *Salmonella* serotypes found in an experiment with outdoor pigs. Wageningen J. Life. Sci. **52**:109-117.
38. **Edrington TS, Schultz CL, Bischoff KM, Callaway TR, Looper ML, Genovese KJ, Jung YS, McReynolds JL, Anderson RC, Nisbet DJ.** 2004. Antimicrobial resistance and serotype prevalence of *Salmonella* isolated from dairy cattle in the southwestern United States. Microb. Drug. Resist. **10**:51-56.
39. **van Hoek AH, de Jonge R, van Overbeek WM, Bouw E, Pielat A, Smid JH, Malorny B, Junker E, Löfström C, Pedersen K, Aarts HJ, Heres L.** 2012. A

- quantitative approach towards a better understanding of the dynamics of *Salmonella* spp. in a pork slaughter-line. *Int. J. Food. Microbiol.* **153**:45-52.
40. **CDC.** 2006. *Salmonella* Surveillance: Annual summary 2005. Centers for Disease Control and Prevention, Atlanta, GA.
 41. **Team Ee.** 2013. The European Union summary report on trends and sources of zoonoses, zoonotic agents and food-borne outbreaks in 2011 has been published. *Euro. Surveill.* **18**:20449.
 42. **Galanis E, Lo Fo Wong DM, Patrick ME, Binsztein N, Cieslik A, Chalermchikit T, Aidara-Kane A, Ellis A, Angulo FJ, Wegener HC, Salm-Surv WHO.** 2006. Web-based surveillance and global *Salmonella* distribution, 2000-2002. *Emerg. Infect. Dis.* **12**:381-388.
 43. **CDC.** 2009. *Salmonella* Annual summary tables. Centers for Disease Control and Prevention, Atlanta, GA.
 44. **MMWR.** 2010. *Salmonella* Montevideo Infections Associated with Salami Products Made with Contaminated Imported Black and Red Pepper — United States, July 2009–April 2010, p. 1638-1671, vol. 59.
 45. **Cromwell GL.** 2002. Why and how antibiotics are used in swine production. *Anim. Biotechnol.* **13**:7-27.
 46. **White DG, Zhao S, McDermott PF, Ayers S, Friedman S, Sherwood J, Breider-Foley M, Nolan LK.** 2003. Characterization of integron mediated antimicrobial resistance in *Salmonella* isolated from diseased swine. *Can. J. Vet. Res.* **67**:39-47.

47. **Akwar HT, Poppe C, Wilson J, Reid-Smith RJ, Dyck M, Waddington J, Shang D, McEwen SA.** 2008. Associations of antimicrobial uses with antimicrobial resistance of fecal *Escherichia coli* from pigs on 47 farrow-to-finish farms in Ontario and British Columbia. *Can. J. Vet. Res.* **72**:202-210.
48. **McEwen SA, Fedorka-Cray PJ.** 2002. Antimicrobial use and resistance in animals. *Clin. Infect. Dis.* **34 Suppl 3**:S93-S106.
49. **Gebreyes W, Thakur S, Davies P, Funk J, Altier C.** 2004. Trends in antimicrobial resistance, phage types and integrons among *Salmonella* serotypes from pigs, 1997-2000. *J. Antimicrob. Chemother.* **53**:997-1003.
50. **Helms M, Ethelberg S, Mølbak K, Group DS.** 2005. International *Salmonella* Typhimurium DT104 infections, 1992-2001. *Emerg. Infect. Dis.* **11**:859-867.
51. **Glynn MK, Bopp C, Dewitt W, Dabney P, Mokhtar M, Angulo FJ.** 1998. Emergence of multidrug-resistant *Salmonella enterica* serotype Typhimurium DT104 infections in the United States. *N. Engl. J. Med.* **338**:1333-1338.
52. **Bradford PA.** 2001. Extended-spectrum beta-lactamases in the 21st century: characterization, epidemiology, and detection of this important resistance threat. *Clin. Microbiol. Rev.* **14**:933-951, table of contents.

Table 1. Breakdown of *Salmonella* isolation by farm and farm type

Farms^a	Farm Type	Cohorts^b	Frequency^c (N)	Positive (%)
ABF 1	ABF	A1	394	5.9
ABF 2	ABF	A2	333	5.1
ABF 3	ABF	A3	341	5.2
ABF 4	ABF	A4	342	5.2
ABF 5	ABF	A5	366	5.6
ABF 6	ABF	A6	344	5.2
ABF 7	ABF	A7	365	5.6
ABF 8	ABF	A8	232	3.5
CONV 1*	Conventional	C1	388	5.9
CONV 2*	Conventional	C2	362	5.5
CONV 3	Conventional	C3	121	1.84
CONV 4	Conventional	C3	171	2.6
CONV 5	Conventional	C3	72	1
CONV 6	Conventional	C4	195	2.9
CONV 7	Conventional	C4	119	1.8
CONV 8	Conventional	C4	67	1
CONV 9	Conventional	C5	69	1.1
CONV 10	Conventional	C5	70	1.1
CONV 11	Conventional	C5	286	4.4
CONV 12	Conventional	C6	69	1.1
CONV 13	Conventional	C6	67	1
CONV 14	Conventional	C6	239	3.6
CONV 15	Conventional	C7	37	1
CONV 16	Conventional	C7	127	1.9
CONV 17	Conventional	C7	215	3.3
CONV 18*	Conventional	C8	210	3.2
CONV 19*	Conventional	C8	185	2.8
CONV 20	Conventional	C9	194	2.9
CONV 21	Conventional	C9	67	1
CONV 22	Conventional	C9	122	1.9
CONV 23*	Conventional	C10	183	2.8
CONV 24*	Conventional	C10	197	3

^aABF1-8: Antimicrobial Free farm owned by individual farmers; CONV1-24:

conventional farms owned by two different companies.

*The total number of conventional farm sampled was 30. The *indicated farms sampled at three different locations, since the name of the farm is same they appeared as single farm. Therefore there are only 24 farms listed in the table.

^bA1-8: ABF cohorts; C1-10: Conventional cohorts

^cFrequency-No of samples collected which includes fecal, environmental and slaughter samples

Table 2. Breakdown of *Salmonella* isolation by production/processing stage from ABF and conventional production system

Production Stage^a	Frequency^b (N)	Positive (%)
Farrowing	1,112	16.9
Nursery1	1,026	15.6
Nursery2	974	14.8
Finishing1	986	14.9
Finishing2	913	13.8
Slaughter	672	10.21
Post Evis	454	6.9
Post Chill	454	6.7

^aFarrowing: includes fecal samples from sows and piglets, environmental samples; nursery1 and 2, finishing 1 and 2: includes fecal and environmental samples; slaughter: includes mesenteric lymphnodes, lairage and truck swabs; Post Evis: post evisceration; Post-Chill: post chilling

^bFrequency: total number of samples collected from pigs and environment

Table 3: The distribution of *Salmonella* serotypes from pigs and the environmental samples at farm and slaughter (n=1,090)

Serotypes Identified	Farm				Slaughter			
	ABF		Conventional		ABF		Conventional	
	Pigs n=5	Environment n=14	Pigs n=189	Environment n=439	Carcasses n=86	Environment n=63	Carcasses n=197	Environment n=97
S. Agona	0	0	0	0	1 (1.1)	0	1 (0.5)	0
S. Anatum	3 (60)	3 (21.4)	30 (15.8)	53 (12)	9 (10.4)	18 (28.5)	6 (3)	15 (15.4)
S. Braenderup	0	0	0	1 (0.2)	3 (3.4)	0	0	0
S. Cerro	0	0	12 (6.3)	3 (0.6)	0	0	0	0
S. Derby	0	0	4 (2.1)	31 (7)	5 (5.8)	0	70 (35.5)	1 (1)
S. Give	2 (40)	6 (42.8)	0	0	3 (3.4)	0	0	0
S. Heidelberg	0	0	0	17 (3.8)	0	0	0	0
S. Infantis	0	0	31 (16.4)	61 (13.8)	34 (39.5)	38 (60.3)	13 (6.5)	47 (48.4)
S. Inverness	0	0	0	2 (0.4)	13 (15.1)	0	0	0
S. Johannesburg	0	0	0	1 (0.2)	0	0	5 (2.5)	0
S. London	0	0	0	3 (0.6)	0	3 (4.7)	0	2 (2)
S. Mbandaka	0	0	2 (1)	2 (0.4)	0	0	3 (1.5)	1 (1)
S. Muenchen	0	0	3 (1.5)	0	11 (12.7)	0	0	0
S. Newport	0	0	0	1 (0.2)	3 (3.4)	0	0	0
S. Ohio	0	0	20 (10.5)	24 (5.4)	0	0	6 (3)	1 (1)
S. Ouakam	0	0	23 (12.1)	41 (9.3)	0	0	8 (4)	0
S. Rissen	0	0	6 (3.1)	39 (8.8)	0	0	1 (0.5)	0
S. Rough_O:r:1,5	0	0	0	0	0	1 (1.5)	9 (4.5)	0
S. Schwarzengrund	0	0	0	2 (0.4)	0	0	0	0
S. Senftenberg	0	0	4 (2.1)	2 (0.4)	0	0	1 (0.5)	0
S. Typhimurium	0	3 (21.4)	54 (28.5)	154 (35)	1 (1.1)	3 (4.7)	73 (37)	30 (30.1)
S. Typhimurium Var 5	0	2 (14.2)	0	0	0	0	1 (0.5)	0
6,7, Non motile	0	0	0	2 (0.4)	0	0	0	0
III_44:z4,z32:-	0	0	0	0	3 (3.4)	0	0	0

Table 4: The MIC distribution (squashtogram) of *Salmonella* isolated from all swine samples (n=1,090)*

Antimicrobials ^a	% Resistant	Distribution of MICs in µg/mL (%)															
		0.015	0.03	0.06	0.125	0.25	0.5	1	2	4	8	16	32	64	128	256	512
AMI	0.0						0.6	65.2	30.8	2.9	0.4	0.0	0.0	0.0	0.0		
AMP	12.1							78.4	5.0	4.4	0.1	0.0	0.3	11.8			
AUG**	4.1							82.7	3.2	2.0	1.3	6.7	2.9	1.2			
AXO	4.0				95.7	0.1	0.2	0.1	0.0	0.1	0.6	3.1	0.0	0.2			
CHL	5.0								1.3	32.9	58.9	2.0	0.4	4.6			
CIP	0.0	92.2	4.7	0.9	0.3	0.1	1.7	0.1	0.0	0.0							
FIS	41.6											0.8	0.8	53.6	1.9	1.3	41.6
FOX	4.4							1.3	17.3	73.8	2.1	1.2	0.6	3.9			
GEN	0.5				63.5	30.6	4.5	0.1	0.0	0.8	0.1	0.4					
KAN	2.1										97.8	0.0	0.0	0.1	2.1		
NAL	1.9						0.3		21.6	75.1	1.0	0.2	0.2	1.7			
STR	17.3												82.7	4.5	12.8		
SXT**	3.1				94.5	0.3	0.8	1.1	0.2	3.1							
TET	70.6									29.4	0.0	0.0	0.7	69.9			
TIO	3.9				0.1	0.4	11.3	82.5	1.7	0.2	0.0	3.9					

*The whitened areas indicate the range of dilutions tested for each antimicrobial. Shaded areas fall outside the range of tested concentrations. The vertical bars indicate the CLSI or NARMS consensus breakpoints for resistance (R versus I and S combined). Numbers in the right-side shaded areas indicate the percentage of isolates with undetermined MICs known to be greater than the highest concentrations measured on the microbroth dilution plates.

**The MIC represents for the first antibiotic (of two).

^aAMI: Amikacin, AMP: Ampicillin, AUG: Amoxicillin/Clavulanic Acid, AXO: Ceftriaxone, CHL: Chloramphenicol, CIP: Ciprofloxacin, FIS: Sulfisoxazole, FOX: Cefoxitin, GEN: Gentamicin, KAN: Kanamycin, NAL: Nalidixic acid, STR: Streptomycin, SXT: Trimethoprim/sulfamethaxazole, TET: Tetracycline, TIO: Ceftiofur.

Table 5: Comparison of resistance and MIC distribution (squashtogram) for *Salmonella* isolated from the conventional production system at farm and slaughter (pigs n=386; environment n=536)*

Antimicrobials ^c	Source	% Resistant	Distribution of MICs in µg/mL (%)															
			0.015	0.03	0.06	0.13	0.25	0.5	1	2	4	8	16	32	64	128	256	512
AMP	Pigs ^a	13.9						76.2	3.9	6	0	0	0.2	13.7				
	Environment ^b	14.1						76.6	5.4	3.5	0.2	0	0.4	13.8				
AXO	Pigs	4.1				50.5	0	0	0.2	0	0	0.2	3.6	0	0.2			
	Environment	5				94.4	0	0	0.2	0	0.2	1.1	3.7	0				
CHL	Pigs	8								0.7	34.9	54.4	1.8	0.7	7.2			
	Environment	4.1								1.1	35	56.9	2.7	1.1	3.9			
FIS	Pigs	55.9											0	0.8	43.2	0	0	79.5
	Environment	43.4											0.7	0.4	55.4	0	0	43.4
FOX	Pigs	4.4						0	0.2	20.7	71	2.5	1	0.5	3.8			
	Environment	5.2						0	1.5	13.2	76.3	2	1.6	0.4	4.8			
STR	Pigs	27.7												72.2	4.4	23.3		
	Environment	14.5												85.4	5.2	9.3		
TET	Pigs	80.3									19.6	0	0	1	79.2			
	Environment	78.3									21.6	0	0.4	78				
TIO	Pigs	4.1			0	0.2	8.5	84.1	2.3	0	0	0	4.1					
	Environment	4.8			0	0.2	11	82	1.8	0.4	0	0	4.8					

*The whitened areas indicate the range of dilutions tested for each antimicrobial. Shaded areas fall outside the range of tested concentrations. The vertical bars indicate the CLSI or NARMS consensus breakpoints for resistance (R versus I and S combined). Numbers in the right-side shaded areas indicate the percentage of isolates with undetermined MICs known to be greater than the highest concentrations measured on the microbroth dilution plates.

^aPigs includes isolates from conventional pig fecal (n=189) at the farm and carcass samples (n=197) at slaughter

^bEnvironment includes isolates from conventional farm (n=439) and slaughter (n=97) environments

^cAMI: Amikacin, AMP: Ampicillin, AXO: Ceftriaxone, CHL: Chloramphenicol, FIS: Sulfisoxazole, FOX: Cefoxitin, STR: Streptomycin, TET: Tetracycline, TIO: Ceftiofur.

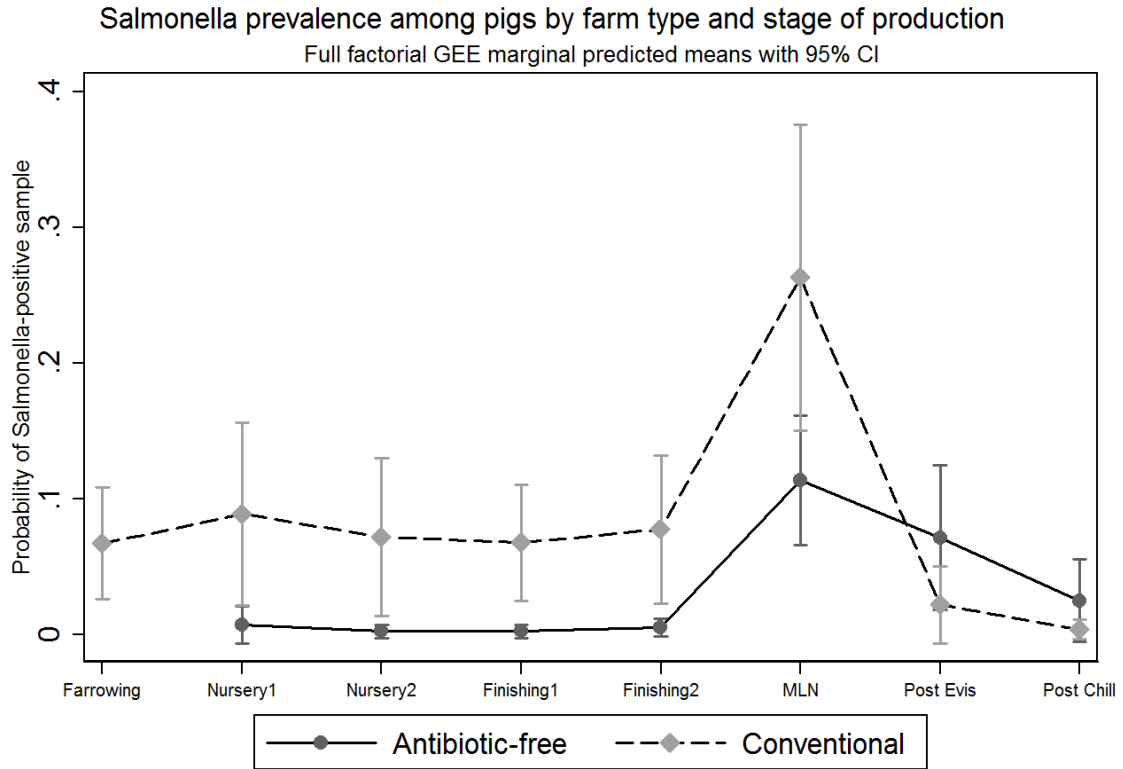
Table 6: Distribution of *Salmonella* serotypes associated with predominant MDR patterns in conventional production system

Serotypes (n)	Predominant MDR patterns ^a (n)	Farm		Slaughter	
		Pigs (%)	Environment (%)	Carcasses (%)	Environment (%)
S. Anatum (103)	AMP AUG AXO FOX TIO TET (25)	11 (44)	14 (56)	0	0
	AMP AUG AXO FOX TIO (5)	0	2 (40)	0	3 (60)
S. Typhimurium (311)	AMP AUG AXO FOX TIO TET (7)	3 (43)	4 (57)	0	0
	AMP FIS NAL STR TET (13)	3 (23)	8 (61)	1 (8)	0
	AMP CHL FIS STR TET (41)	5 (12)	17 (41)	16 (39)	3 (7)
	FIS SXT TET (25)	0	8 (32)	9 (36)	8 (32)
	FIS STR TET (18)	0	0	11 (61)	7 (39)
S. Derby (106)	FIS STR TET (72)	2 (3)	15 (21)	54 (75)	1 (1)
S. Heidelberg (17)	KAN STR TET (11)	0	11 (100)	0	0

^aAMP: Ampicillin, AUG: Amoxicillin/Clavulanic Acid, AXO: Ceftriaxone, CHL: Chloramphenicol, FIS: Sulfisoxazole, FOX:

Cefoxitin, KAN: Kanamycin, NAL: Nalidixic acid, STR: Streptomycin, TET: Tetracycline, TIO: Ceftiofur.

Figure 1: *Salmonella* prevalence among pigs at farm and slaughter



MLN: mesenteric lymphnode

Figure 2: *Salmonella* prevalence in the environment at farm and slaughter

Salmonella prevalence in environmental samples by farm type and stage of production
Full factorial GEE marginal predicted means with 95% CI

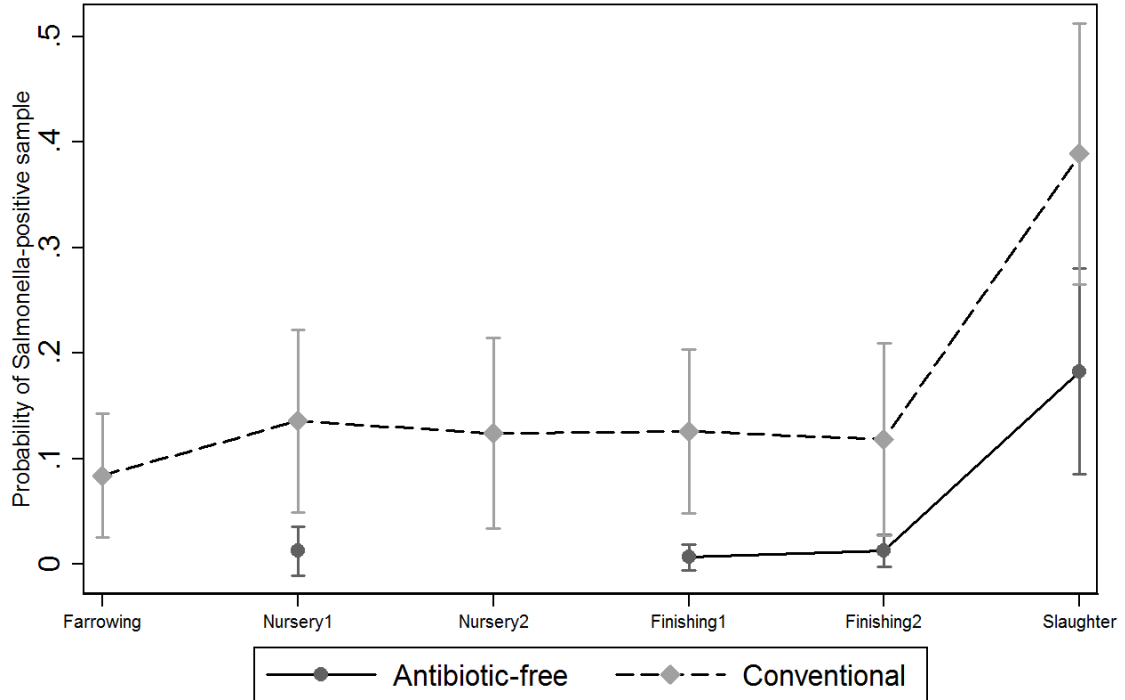
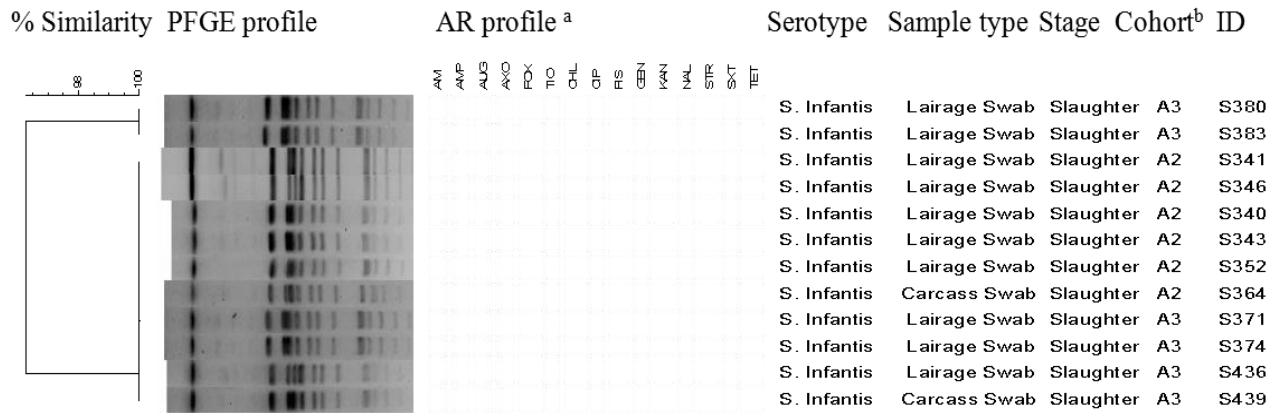


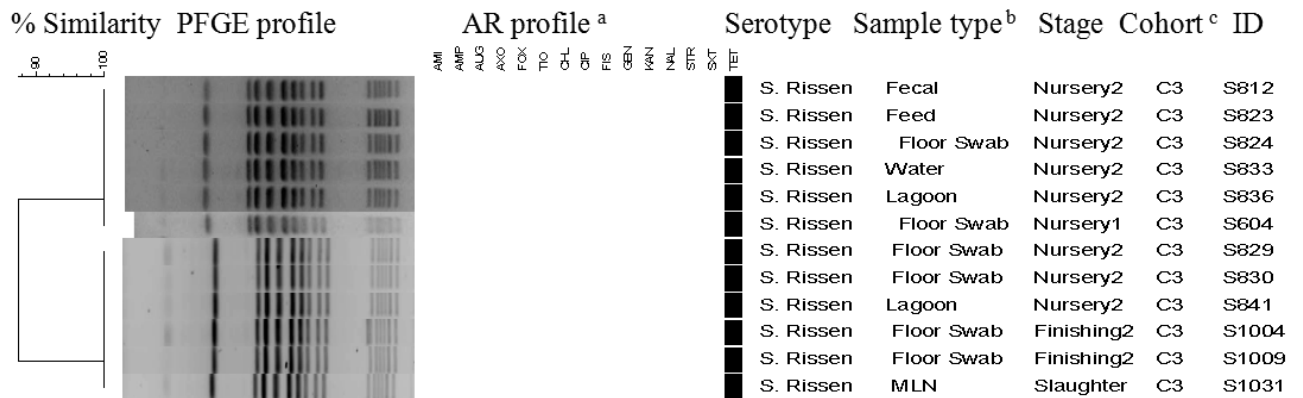
Figure 4. Dendrogram showing genotypic similarity among *Salmonella* isolated from ABF systems at various stages of production



^aAMI: Amikacin, AMP: Ampicillin, AUG: Amoxicillin/Clavulanic Acid, AXO: Ceftriaxone, CHL: Chloramphenicol, CIP: Ciprofloxacin, FIS: Sulfisoxazole, FOX: Cefoxitin, GEN: Gentamicin, KAN: Kanamycin, NAL: Nalidixic acid, STR: Streptomycin, SXT: Trimethoprim/sulfamethaxazole, TET: Tetracycline, TIO: Ceftiofur.

^bA2 and A3: ABF cohort

Figure 5. Dendrogram showing genotypic similarity among *Salmonella* isolated from conventional system at various stages of productions



^aAMI: Amikacin, AMP: Ampicillin, AUG: Amoxicillin/Clavulanic Acid, AXO: Ceftriaxone, CHL: Chloramphenicol, CIP: Ciprofloxacin, FIS: Sulfisoxazole, FOX: Cefoxitin, GEN: Gentamicin, KAN: Kanamycin, NAL: Nalidixic acid, STR: Streptomycin, SXT: Trimethoprim/sulfamethaxazole, TET: Tetracycline, TIO: Ceftiofur.

^bMLN: mesenteric lymphnode

^cC3: conventional cohort