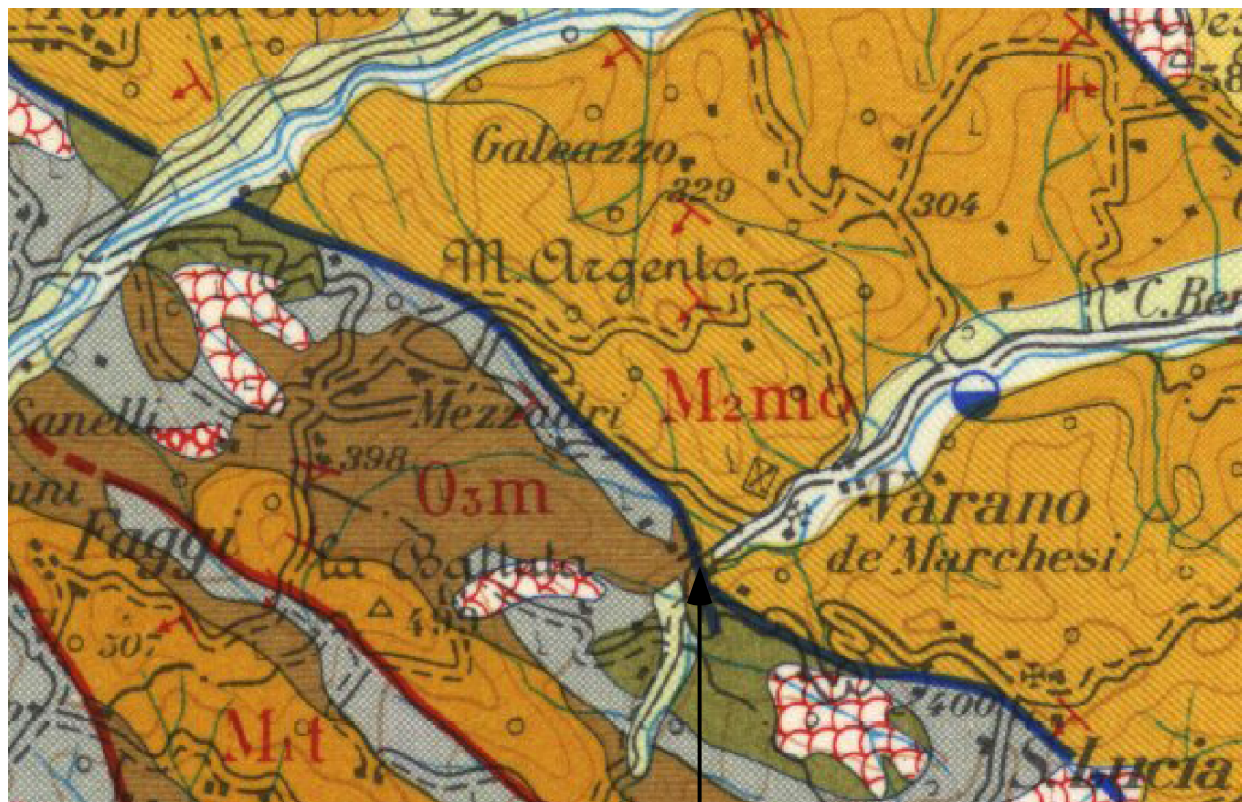


This excerpt from the Parma sheet of the Carta Geologica d'Italia reports a fault: helping yourself with the complete legend of the sheet, describe which kind of fault it is, and represent it by a freehand cross-section sketch. It is highly recommended to look at the exemplary cross-section sketch reported in the Mercato Saraceno (already found objects).pdf



valley-floor