

Preliminary in vivo magnetofection data using magnetic calcium phosphate nanoparticles immobilizing DNA and iron oxide nanocrystals

著者 (英)	Quazi T.H. Shubhra, Ayako Oyane, Maki Nakamura, Sandra PUENTES, Aiki Marushima, Hideo Tsurushima
journal or publication title	Data in Brief
volume	18
page range	1696-1701
year	2018-04
権利	(C)2018TheAuthors. Published by ElsevierInc.This is an open access article under the CCBY license.
URL	http://hdl.handle.net/2241/00154118

doi: 10.1016/j.dib.2018.04.058



ELSEVIER

Contents lists available at ScienceDirect

Data in Brief

journal homepage: www.elsevier.com/locate/dib

Data article

Preliminary *in vivo* magnetofection data using magnetic calcium phosphate nanoparticles immobilizing DNA and iron oxide nanocrystals



Quazi T.H. Shubhra^{a,*}, Ayako Oyane^{a,*}, Maki Nakamura^a,
Sandra Puentes^b, Aiki Marushima^c, Hideo Tsurushima^{a,c}

^a Nanomaterials Research Institute, National Institute of Advanced Industrial Science and Technology (AIST), Central 5, 1-1-1 Higashi, Tsukuba 305–8565, Japan

^b Department of Intelligent Interaction Technologies, Faculty of Engineering, Information and Systems, University of Tsukuba, 1-1-1 Tennodai, Tsukuba, Ibaraki 305–8575, Japan

^c Department of Neurosurgery, Faculty of Medicine, University of Tsukuba, 1-1-1 Tennodai, Tsukuba, Ibaraki 305–8575, Japan

ARTICLE INFO

Article history:

Received 14 October 2017

Received in revised form

14 February 2018

Accepted 17 April 2018

Available online 23 April 2018

Keywords:

Magnetofection

Infusion fluid

Gene delivery

Calcium phosphate

Supersaturated solution

ABSTRACT

The data reported herein are in association with our research article entitled “Rapid one-pot fabrication of magnetic calcium phosphate nanoparticles immobilizing DNA and iron oxide nanocrystals using injection solutions for magnetofection and magnetic targeting” (Shubhra et al. 2017) [1]. This article reports morphological and gene delivery (*in vitro* and preliminary *in vivo*) data of those calcium phosphate (CaP) nanoparticles (NPs) with various iron oxide (IO) contents, named as CaP-Fe(1), CaP-Fe(2), CaP-Fe(3), CaP-Fe(4), and CaP-Fe(5), which were prepared *via* coprecipitation in supersaturated CaP solutions with nominal Fe concentrations 6.97, 13.94, 27.87, 55.74, and 139.35 µg/mL, respectively. Morphological data of four different NPs: CaP-Fe(1), CaP-Fe(2), CaP-Fe(4), and CaP-Fe(5) are shown here. Data of the luciferase reporter gene expression assay show the effects of the coprecipitation time and the dosage of the CaP-Fe(3) NPs on gene expression levels of CHO-K1 cells transfected by the NPs without external magnetic field. It is demonstrated using digital and microscopic images that the CaP-

DOI of original article: <https://doi.org/10.1016/j.mtchem.2017.10.001>

* Corresponding authors.

E-mail addresses: shubhro.du@gmail.com (Q.T.H. Shubhra), a-oyane@aist.go.jp (A. Oyane).

<https://doi.org/10.1016/j.dib.2018.04.058>

2352-3409/© 2018 The Authors. Published by Elsevier Inc. This is an open access article under the CC BY license (<http://creativecommons.org/licenses/by/4.0/>).

Fe(3) NPs localize near the periphery of the external magnet that was placed under the cell culture plate. Using the CaP-Fe(3) NPs, animal experiments were conducted to obtain preliminary *in vivo* magnetofection data.

© 2018 The Authors. Published by Elsevier Inc. This is an open access article under the CC BY license (<http://creativecommons.org/licenses/by/4.0/>).

Specifications table

Subject area	Chemistry
More specific subject area	Materials Science, Nanotechnology, Gene Delivery
Type of data	Image, Graph, Figure
How data was acquired	Scanning electron microscope (SEM; S-4800, Hitachi-High Technologies, Inc.), optical microscope (IX71, Olympus Co.), digital camera, and luminometer (Gene Light 55, Microtec Co., Ltd.)
Data format	Raw and calculated data
Experimental factors	For SEM observation, samples were pretreated. NPs were washed, dried under vacuum and coated with carbon.
Experimental features	Nanoparticles (NPs) were prepared by a coprecipitation process [1–3]; for SEM observation, NPs were pretreated as mentioned above; for <i>in vitro</i> and <i>in vivo</i> assays, they were used after the coprecipitation process without washing.
Data source location	AIST, Tsukuba, 305–8565, Japan
Data accessibility	Data are available within this article

Value of the data

- Preliminary *in vivo* magnetofection data using the calcium phosphate (CaP) nanoparticles (NPs) immobilizing DNA and iron oxide (IO) nanocrystals are presented, proving the worth of further *in vitro* and *in vivo* studies on these NPs.
- Detailed animal experimental method for *in vivo* magnetofection is described that will be helpful to design animal experiments for magnetic NPs.
- Magnetic attraction and the resulting aggregation of the NPs around the periphery of the external magnet (placed under the well) are visualized, that accounts for the unsuccessful magnetofection (magnetically enhanced gene delivery) in the standard 2D plate culture system.
- The luciferase assay data present the effects of coprecipitation time for NP preparation and dosage of the NPs on gene expression level of cells transfected by the NPs, which are useful for optimization of a similar CaP-based gene delivery system.

1. Data

Fig. 1 shows scanning electron microscopy (SEM) images of four different DNA-IO-CaP NPs with various IO contents (CaP-Fe(1), CaP-Fe(2), CaP-Fe(4), and CaP-Fe(5)) [1].

Fig. 2 shows the effect of the coprecipitation time in the supersaturated CaP solution (the solution used for CaP-Fe(3)), whereas Fig. 3 shows that of the dosage of the CaP-Fe(3) NPs on the luciferase activity of the CHO-K1 cells transfected by NPs without external magnetic field.

Fig. 4 shows the DNA-IO-CaP (CaP-Fe(3) NPs; brown due to the immobilized IO nanocrystals) gathering and aggregating around the periphery of the external magnet that was placed under the well of a 6-well plate seeded with CHO-K1 cells.

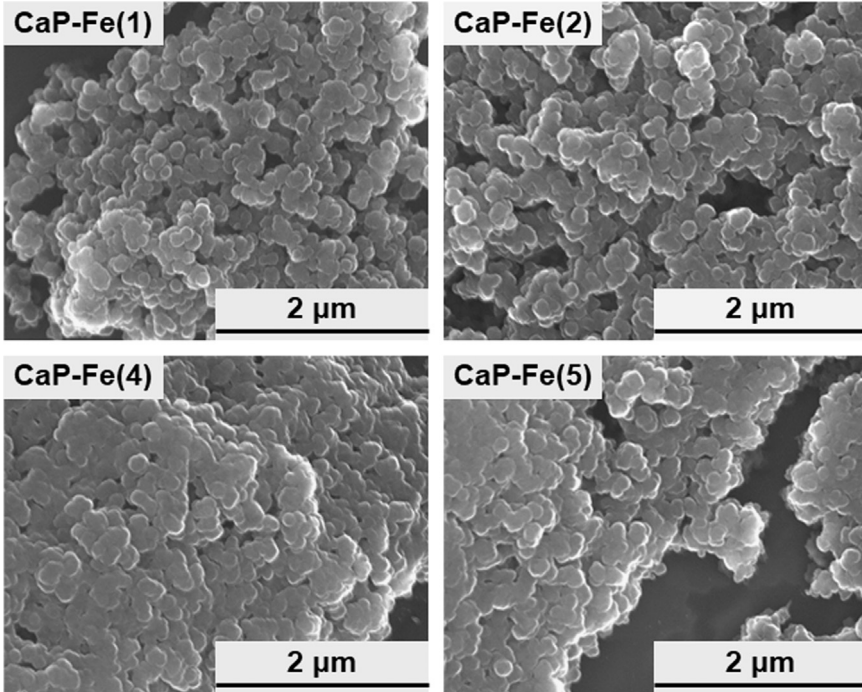


Fig. 1. SEM images of four different NPs (CaP-Fe(1), CaP-Fe(2), CaP-Fe(4), and CaP-Fe(5)).

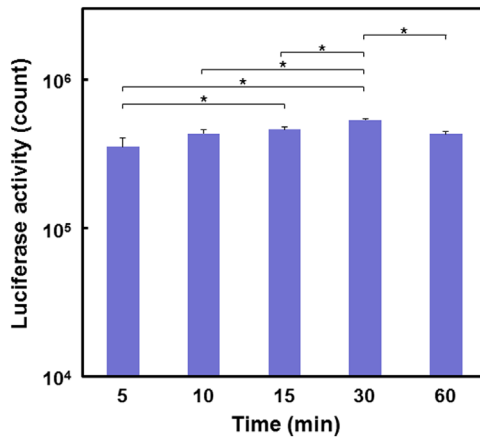


Fig. 2. Luciferase activity of CHO-K1 cells transfected by NPs (dosage = 300 μL) that were prepared by coprecipitation for various time periods (5–60 min) in the supersaturated CaP solution that was used for CaP-Fe(3) (data presented as means + SD; n = 3, *p < 0.05).

A pilot *in vivo* study was conducted to assay magnetofection and magnetic targeting capabilities of the DNA-IO-CaP (CaP-Fe(3)) NPs to the mouse ischemic brain tissue. Infarction was induced on the right side of the mouse brain, and the NPs were injected. The illustration (cross section image of the brain tissue) in Fig. 5 (left) indicates the position of the magnet and the sampling position (center of, periphery of, and far from the magnet) on the right and left sides of the brain slice (Bregma = 0). Fig. 5 (right) shows luciferase activity of each sample as a result of NP delivery to the brain tissue.

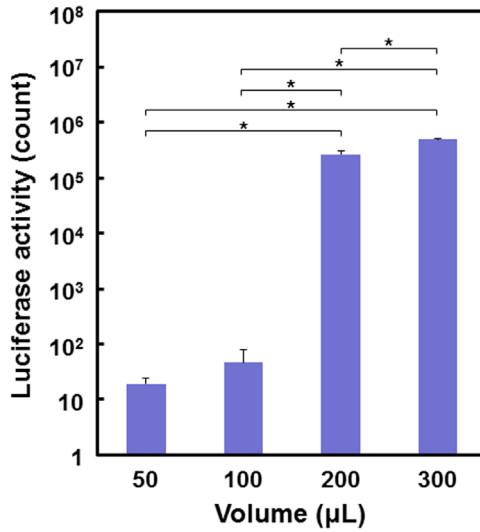


Fig. 3. Luciferase activity of CHO-K1 cells transfected by various dosages (50–300 µL: volume of the supersaturated CaP solution with dispersed NPs) of CaP-Fe(3) (data presented as means + SD; $n = 3$, $*p < 0.05$).

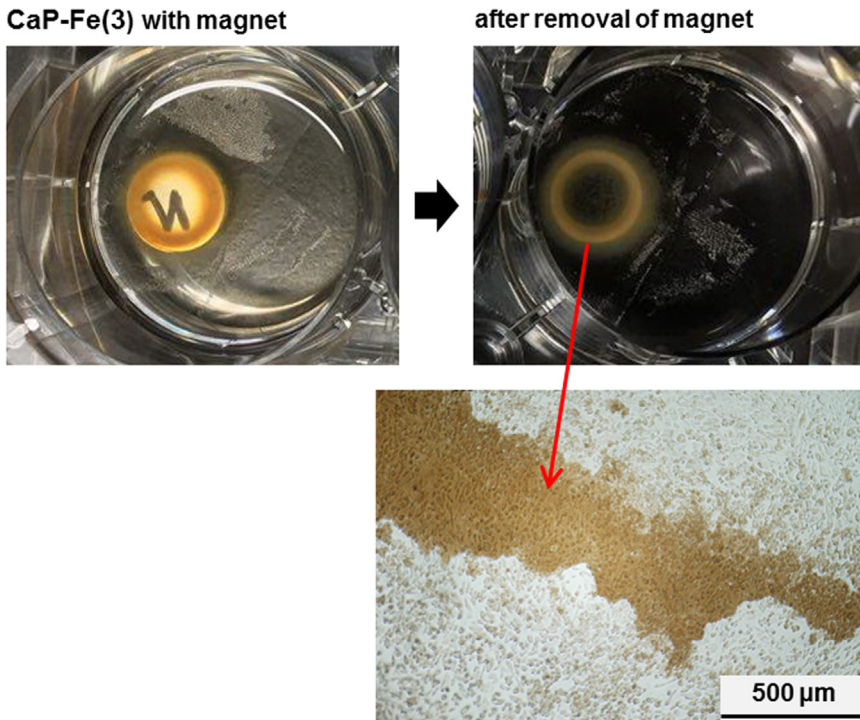


Fig. 4. Digital (upper) and microscopic (lower) images showing aggregation of the DNA-IO-CaP (CaP-Fe(3)) NPs around the periphery of the external magnet (placed under the well in the upper left image).

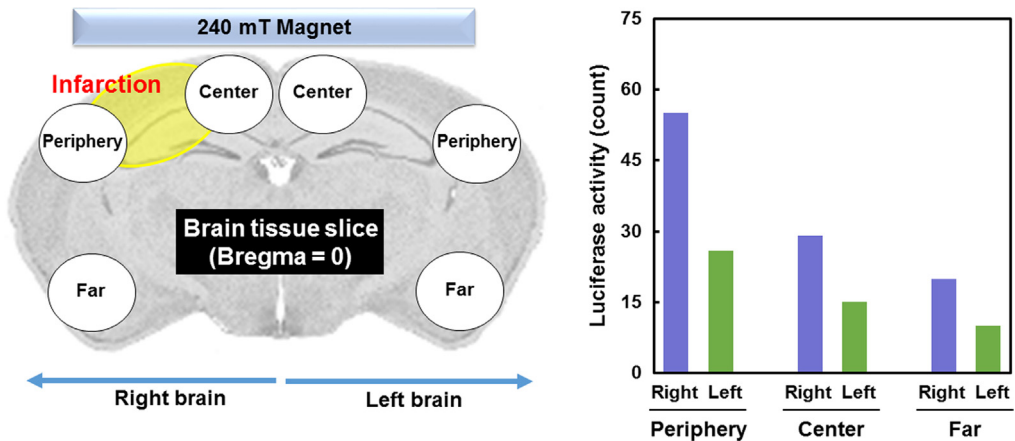


Fig. 5. Schematic representation of the sampling position from the brain slice (left), and luciferase activity of each sample (right).

2. Experimental design, materials and methods

2.1. Preparation of NPs

DNA-IO-CaP NPs were prepared by coprecipitation in supersaturated CaP solutions and those solutions were prepared from injection solutions and plasmid including cDNA of luciferase [1].

2.2. SEM observation

Morphology of the prepared NPs was observed by field-emission SEM after washing, vacuum drying, and carbon coating.

2.3. *in vitro* transfection study without magnetic field

After coprecipitation for a certain time, the supersaturated CaP solution (50, 100, 200, or 300 μ L) with dispersed NPs was added to the culture of CHO-K1 cells that were precultured for 24 h in a 24-well plate. After culturing for another 48 h, cells were assayed for luciferase activity by the protocol described in our previous papers [1,3].

2.4. Pilot *in vivo* transfection study with magnetic field

Animal experiment was conducted after the approval from the animal research ethics committee of AIST and the University of Tsukuba. An eight weeks old mouse (C57BL/6J, Charles River Laboratories Japan, Inc., Japan) was anesthetized with a mixture of ketamine (80 mg/kg) and xylazine (14 mg/kg) administered intraperitoneally. The animal's head was shaved and a 1 cm length coronal incision was done in the scalp, posterior to the eyes; following, a small spatula was used to detach the scalp from the skull posterior to the incision to create a pocket. A magnet (7 mm diameter and 1.5 mm thickness; Niroku Seisakusho Co. Ltd., Japan) of strength 240 mT was placed into the pocket completely covering the bregma and the incision was sutured. An ischemic lesion was induced by the method described by Koizumi et al. [4]. Briefly, the animal was placed over its back and the neck was shaved. A mid-line incision was made and the skin and glandular tissue were retracted to the right side. The common carotid artery (CCA) and external carotid artery were dissected and ligated permanently in their proximal end with a silk suture. A ribbon knot was placed in the distal CCA and an arteriotomy was performed in the proximal CCA, followed by the insertion of a silicone-coated monofilament (6023-PK5, Doccol Corporation, USA) which was fixed by a silk knot. The filament was

inserted ~1 cm to reach the middle cerebral artery and left at place for 60 min. Then, reperfusion was achieved by removing the filament and CCA catheterization with a silicone tube was done followed by 200 μ L perfusion of the supersaturated CaP solution with dispersed NPs (CaP-Fe(3)). The injection was performed over 2 min and then the catheter was removed, the proximal CCA was ligated permanently and the skin was closed with a continuous suture. The mouse was allowed to recover from anesthesia over a heating pad and housed isolated in a clean cage with access to water and soft food *ad libitum*. Forty-eight hours after injection, the mouse was sacrificed, the brain was dissected and sliced by using a brain matrix (1 mm thickness). The slice corresponding to Bregma = 0 level was used to dissect 6 samples of approximately 1 mm³; samples were taken bilaterally from the cortex in relation to the magnet from the center (next to the midline), periphery (lateral cortex), and far (latero-inferior) (Fig. 5 (left)). The samples were homogenized (Q125 Sonicator, Qsonica LLC., USA) at 25 °C for 30 s in a 1 mL cell lysate solution (Promega Co., USA) followed by freezing at –80 °C. Thereafter, luciferase assay was performed following the protocol described in our previous papers [1,3].

Acknowledgements

This work was supported by JSPS KAKENHI Grant Numbers JP26560250, JP15F15030, JP16H03831. We thank Ms. Hiroko Araki from AIST for her technical support and Ms. Arnela Mujagic from University of Tsukuba for her support during animal experiments.

Transparency document. Supporting information

Supplementary data associated with this article can be found in the online version at <http://dx.doi.org/10.1016/j.dib.2018.04.058>.

References

- [1] Q.T.H. Shubhra, A. Oyane, M. Nakamura, S. Puentes, A. Marushima, H. Tsurushima, Rapid one-pot fabrication of magnetic calcium phosphate nanoparticles immobilizing DNA and iron oxide nanocrystals using injection solutions for magnetofection and magnetic targeting, *Mater. Today Chem.* 6 (2017) 51–61.
- [2] A. Oyane, H. Araki, M. Nakamura, Y. Shimizu, Q.T.H. Shubhra, A. Ito, H. Tsurushima, Controlled superficial assembly of DNA-amorphous calcium phosphate nanocomposite spheres for surface-mediated gene delivery, *Colloid. Surf. B Biointerfaces* 141 (2016) 519–527.
- [3] Q.T.H. Shubhra, A. Oyane, H. Araki, M. Nakamura, H. Tsurushima, Calcium phosphate nanoparticles prepared from infusion fluids for stem cell transfection: process optimization and cytotoxicity analysis, *Biomater. Sci.* 5 (2017) 972–981.
- [4] J. Koizumi, Y. Yoshida, T. Nakazawa, G. Ooneda, Experimental studies of ischemic brain edema, I: a new experimental model of cerebral embolism in rats in which recirculation can be introduced in the ischemic area, *Jpn. J. Stroke* 8 (1986) 1–8.