

REVISITING THE GERMAN WAGE STRUCTURE*

CHRISTIAN DUSTMANN
JOHANNES LUDSTECK
UTA SCHÖNBERG

This paper shows that wage inequality in West Germany has increased over the past three decades, contrary to common perceptions. During the 1980s, the increase was concentrated at the top of the distribution; in the 1990s, it occurred at the bottom end as well. Our findings are consistent with the view that both in Germany and in the United States, technological change is responsible for the widening of the wage distribution at the top. At the bottom of the wage distribution, the increase in inequality is better explained by episodic events, such as supply shocks and changes in labor market institutions. These events happened a decade later in Germany than in the United States.

I. INTRODUCTION

The United States witnessed a sharp increase in wage and earnings inequality during the 1980s (e.g., Bound and Johnson [1992]; Levy and Murnane [1992]; Murphy and Welch [1992]; Juhn, Murphy, and Pierce [1993]; Katz and Murphy [1992]; Acemoglu [2002]). Upper-tail inequality, measured as the 90–50 wage gap, continued to rise at a similar pace during the 1990s, whereas lower-tail inequality, measured as the 50–10 wage gap, has been falling or flat since the late 1980s (e.g., Autor, Katz, and Kearney [2008]).¹ A similar increase in inequality in the 1980s has also been observed in other Anglo-Saxon countries, such as the United Kingdom (e.g., Gosling, Machin, and Meghir [2000]) and Canada (e.g., Boudarbat, Lemieux, and Riddell [2006]).

In contrast, most countries in continental Europe seem to have witnessed much smaller increases in inequality in the 1980s, or no increases at all (see, for example, Freeman and Katz [1995] and OECD [1996] for a summary of trends in inequality in European countries). In particular, West Germany, the third largest economy and the largest exporter in the world, has been singled

*For helpful comments, we would like to thank our editor, three referees, David Autor, David Card, Bernd Fitzenberger, Thomas Lemieux, Alexandra Spitz-Oener, and seminar participants at the Australian National University, ESPE, Frankfurt University, the Institute for Employment Research (IAB), Mannheim University, and the University of Melbourne for comments and suggestions. We gratefully acknowledge financial support from the German Research Foundation (DFG) and the Anglo-German Foundation (AGF). We thank Bernd Fitzenberger, Alexandra Spitz-Oener, and Joachim Wagner for sharing their programs and/or data with us.

1. Lemieux (2006b, 2008) also emphasizes that the increase in inequality in the United States is increasingly concentrated at the top of the wage distribution.

© 2009 by the President and Fellows of Harvard College and the Massachusetts Institute of Technology.

The Quarterly Journal of Economics, May 2009

out as a country characterized by a stable wage distribution during the 1980s (see, for example, Steiner and Wagner [1998]; Prasad [2004]).² Numerous scholars cite this stability as evidence against the hypothesis that the growth of inequality observed in the United States and United Kingdom is primarily due to skill-based technological change, as firms in continental Europe had access to the same technologies as firms in the United States or United Kingdom (e.g., Card, Kramarz, and Lemieux [1999]; Piketty and Saez [2003]; Saez and Veall [2005]). Possible explanations for this puzzle include a larger expansion in the relative supply of the high-skilled in Germany (e.g., Abraham and Houseman [1995]; Acemoglu [2003]), unions and other labor market institutions (e.g., Krugman [1994]; Abraham and Houseman [1995]),³ and more recently social norms (e.g., Piketty and Saez [2003]).

This paper revisits the changes in the wage structure in (West) Germany over the past three decades, between 1975 and 2004. Most existing studies on the German wage structure, such as OECD (1996) and Steiner and Wagner (1998), are based on the German Socio-Economic Panel (GSOEP). We instead use a 2% random sample of social security records, the IABS. We show that the common perception that Germany's wage structure has remained largely stable during the 1980s is inaccurate. We find that wage inequality has increased in the 1980s, but mostly at the top half of the distribution. In the early 1990s, wage inequality started to rise also at the bottom half of the distribution. This pattern holds for both men and women.⁴ Our analysis highlights that, while the United States and Germany experienced similar changes at the top of the distribution during the 1980s and 1990s, the two countries markedly differed with respect to the lower end of the wage distribution. The rise in lower tail inequality happened in the 1980s in the United States, but in the 1990s in Germany.

2. Drawing on a variety of data sources, Atkinson (2008) illustrates developments in earnings inequality in Germany dating back to the 1920s. His figures show some increase in overall earnings dispersion over the past two decades.

3. Acemoglu (2002) emphasizes an interesting link between technological change and institutions. If unions compress wages, then firms have greater incentives to adopt labor-complementary technologies, which will reinforce wage compression.

4. The first of these findings has also been documented by Fitzenberger (1999), using an earlier version of our data for the years 1975–1990. The second finding is in line with recent papers by Kohn (2006) and Gernandt and Pfeiffer (2006) who document a similar increase in inequality in lower-tail inequality in the IABS and GSOEP, respectively. However, we are not aware of any paper that jointly analyzes changes in inequality in both the 1980s and 1990s and compares these trends with those in the United States.

We investigate several explanations for the changes in wage inequality in Germany. First, we use the kernel reweighting procedure first proposed by DiNardo, Fortin, and Lemieux (1996) to analyze whether the changes in inequality are explained by mechanical changes in the workforce composition, or whether they reflect changes in skill prices. In line with Lemieux (2006a), we show that it is important to account for changes in workforce composition, in particular at the upper end of the wage distribution. However, these changes cannot fully account for the divergent path of upper and lower tail inequality in the 1980s, or for the divergent path of lower tail inequality in the 1980s and 1990s.

Second, we document a sharp decline in unionization rates in the late 1990s: The share of workers covered by union agreements declined from 87.3% in 1995 to 72.8% in 2004. There is little evidence of a similar decline during the 1980s. Using the same decomposition method as above, we find that between 1995 and 2004, de-unionization can account for 28% of the rise in inequality at the lower end of the wage distribution, but only 11% at the upper end.

Third, we document a rise in the wage differential of medium-skilled workers (i.e., those with an apprenticeship degree) relative to the low-skilled (i.e., those with no postsecondary education) starting in the late 1980s, around the same time that lower-tail inequality started to increase. There is, however, no clear trend in the wage differential of high-skilled workers (i.e., those with a college degree) relative to the medium-skilled. We also document that the decline in the share of the low-skilled started to slow down in the late 1980s, whereas the share of the high-skilled increased at a roughly linear rate from 4.7% in 1975 to 14.8% in 2004. Using a nested constant elasticity of substitution (CES) production framework based on that of Goldin and Katz (2007b, 2008), we show that fluctuations in relative supply explain the evolution of the wage differential between the low- and medium-skilled very well, but do a poor job in predicting the evolution of the wage differential between the medium- and high-skilled.

Fourth, building on the analysis of Spitz-Oener (2006), we provide evidence that is consistent with a polarization of work: during the 1980s and 1990s, occupations with high median wages in 1980 experienced the highest growth rate, whereas occupations in the middle of the 1980 wage distribution lost ground relative to occupations at the bottom. Moreover, occupations at the high end of the 1980 wage distribution predominantly use nonroutine

analytic and interactive skills, whereas routine task usage is highest in the upper middle of the wage distribution. This is consistent with Autor, Levy, and Murnane's (2003) hypothesis that computer technology decreases the demand for jobs that require routine manual or clerical skills (and are found in the middle of the wage distribution) and increases the demand for jobs that require nonroutine cognitive and interpersonal skills (and are found at the top of the wage distribution). This paper thus adds to the growing evidence that technology does not simply increase the demand for skilled labor relative to that of unskilled labor, but instead asymmetrically affects the bottom and the top of the wage distribution (see, for example, Autor, Katz, and Kearney [2006, 2008] for the United States and Goos and Manning [2007] for the United Kingdom). This may begin to supply the unifying international evidence on technological change that so far has been absent.

The evidence provided in this paper is consistent with the idea that technological change is an important driving force behind the widening of the wage distribution, particularly at the top. This conclusion is reinforced by our finding that for occupations above the median, employment and wage changes by wage percentile are positively correlated. In contrast, below-median employment and wage changes are negatively correlated. The rise in lower-tail inequality may therefore be better explained by episodic events, such as supply shocks and changes in labor market institutions. We argue that these shocks happened a decade later in Germany than in the United States.

The plan of this paper is as follows. Section II describes the data used for the analysis. Section III documents the major changes in the German wage structure between 1975 and 2004. We then analyze four possible explanations for the increase in inequality: changes in the workforce composition (Section IV.A), a potential decline in unionization (Section IV.B), supply shocks (Section IV.C), and polarization (Section IV.D). We conclude with a discussion of our findings in Section V.

II. DATA DESCRIPTION

Our empirical analysis is based on two data sets: the IABS, a 2% random sample of social security records, and the LIAB, a linked employer–employee data set. We describe each data set in turn.

II.A. The IABS: A 2% Random Sample of Social Security Records, 1975–2004

Our main data set is a 2% sample of administrative social security records in Germany for the years 1975 to 2004. The data are representative of all individuals covered by the social security system, roughly 80% of the German workforce. It excludes the self-employed, civil servants, individuals currently doing their (compulsory) military service, and individuals on so-called “marginal jobs” (i.e., jobs with at most fifteen hours per week or temporary jobs that last no longer than six weeks). This data set (or earlier versions of it) has been used to study wage inequality by, among others, Steiner and Wagner (1998), Fitzenberger (1999), Möller (2005), Fitzenberger and Kohn (2006), and Kohn (2006).

The IABS has several advantages over the German Socio-Economic Panel, the data set most often used to analyze trends in inequality in Germany (e.g., OECD [1996]; Steiner and Wagner [1998]; Prasad [2004]). First, the IABS is available from 1975 onward, as opposed to 1984 for the GSOEP. Second, the sample size is much larger (more than 200,000 observations per year, as opposed to around 2,000 in the GSOEP). Third, wages are likely to be measured much more precisely in the IABS than in the GSOEP, as misreporting by firms in the IABS is subject to severe penalties. Fourth, attrition rates in the GSOEP are large enough so that results may not be representative for the population as a whole (see, e.g., Spieß and Pannenberg [2003]). In contrast, although workers can also be followed over time in the IABS, each year the original sample is supplemented by a random sample of new labor market entrants. This guarantees that the IABS is representative of workers who pay social security contributions.

The main disadvantage of the IABS is that it is right-censored at the highest level of earnings that are subject to social security contributions. Overall, each year between 9.4% and 14.2% of the male wage distribution is censored. Because of censoring, this paper mostly focuses on the changes in the uncensored part of the wage distribution, up to the 85th percentile. In the United States, much of the action in rising wage inequality since the mid-1980s has been above the 85th percentile (e.g., Piketty and Saez [2003]; Autor, Katz, and Kearney [2008]); consequently, topcoding in our data may lead us to substantially understate inequality growth.

Another difficulty in our data is a structural break in the wage measure in 1984. From 1984 on, our measure includes

bonus payments as well as other one-time payments (Steiner and Wagner 1998). We follow Fitzenberger (1999) and correct for the break (see Appendix I.A for details). Further, our data set does not contain precise information on the number of hours worked; we only observe whether a worker is working full- or part-time (defined as working less than 30 hours per week). We therefore restrict the wage analysis to full-time workers and use the daily wage, averaged over the number of days the worker was working in the year, as our wage measure. Robustness checks against the GSOEP suggest that this does not affect our results.

From this database, we select all men and women between 21 and 60 years of age. Because the level and structure of wages differ substantially between East and West Germany, we concentrate on West Germany (which we usually refer to simply as Germany). Although we provide a descriptive overview of the evolution of inequality for both men and women, our main analysis focuses on men only. Further details on the sample selection and variable description can be found in Appendix I.B.

II.B. The LIAB: Linked Employer–Employee Data, 1995–2004

The data set just described provides no information on union coverage, and thus cannot be used to analyze the impact of de-unionization on the wage structure. Our analysis here is based on the LIAB, a linked employer–employee data set provided by the Institute for Employment Research (IAB). It combines information from the IAB Establishment Panel with information on all workers who were employed in one of these firms as of the 30th of June. The information on workers is drawn from the same social security records as our main data. A detailed description of this data set can be found in Herrlinger, Müller, and Bellmann (2005).

Although data are available from 1993 to 2004, we use only waves from 1995 onward, for which information on union recognition is consistent. In Germany, a firm recognizes a union either by joining an employer federation (*Arbeitgeberverband*), or by engaging in bilateral negotiations with the union. In the first case, union wages are negotiated at a regional and industry level, typically on an annual basis. Our union variable distinguishes between firm- and industry-level agreements.

The IAB establishment panel oversamples large establishments. To make our results representative of the German economy as a whole, we weight our results using the cross-sectional weights provided by the LIAB. In Table B.1 in Online Appendix B,

we compare median wages as well as interquartile differences for men in the LIAB and the IABS. The two data sources draw a very similar picture of the developments in the wage structure over this period.

III. TRENDS IN WAGE INEQUALITY

Next, we describe the major changes in wage inequality in Germany from 1975 to 2004 (Section III.A). We then compare our findings with those reported in other studies in Section III.B. Because of wage censoring, we focus on the changes in the uncensored part of the wage distribution and impose no distributional assumptions on the error term in the wage regression. However, some of our findings, such as the evolution of the standard deviation of log wages and log wage residuals, require distributional assumptions. We assume that the error term is normally distributed, with a different variance for each education group and each age group, and impute the censored part of the wage distribution under this assumption. We prefer to work with imputed wages rather than with censored wages because wage residuals can be computed in a straightforward manner. A comparison between OLS estimates based on imputed wages and Tobit estimates based on censored wages shows that both the estimates and the standard errors are almost identical. More details on the imputation method can be found in Appendix I.C. We have conducted extensive robustness checks regarding alternative distributional assumptions, including an upper-tail Pareto distribution. Our results are highly robust to alternative imputation methods. Findings for alternative imputation methods can be found in Section 1 in the Online Appendix.

III.A. Basic Facts

Standard Deviation of Log Wages. Figure I displays the evolution of the standard deviations of log wages and log wage residuals. Panel A refers to men, Panel B to women. The standard deviation is obtained from standard OLS regressions on imputed wages, estimated separately for each year. We control for three education categories, eight age categories, and all possible interactions between these two. For men, the figure shows a continuous rise in both overall and residual inequality during the 1980s, with an acceleration in the 1990s. A simple within-between decomposition indicates that the majority of the increase in inequality

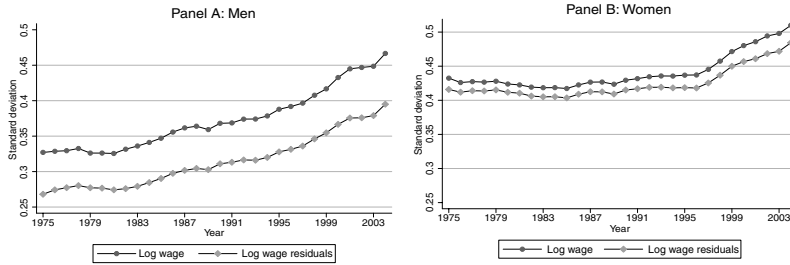


FIGURE I

Evolution of the Standard Deviation of Log Wages and Log Wage Residuals

Source. 2% IABS Sample for full-time workers between 21 and 60 years of age.

The figures plot the evolution of the standard deviation of log wages and log wage residuals. Results are based on imputed wages that assume that the error term in the low-wage regression is normally distributed, with a different variance for each education and each age group. Regressions control for three education categories and eight age categories, as well as all possible interactions between these two variables.

occurred within age and education groups (86% between 1975 and 1989, and 65% between 1990 and 2004).

For women, in contrast, the standard deviation of log wages and log wage residuals remained roughly constant during the 1980s, and started to increase only in the mid-1990s. A further difference between men and women is that age and education explain a smaller portion of the overall variance of log wages for women. As with men, most (82%) of the increase in overall inequality between 1990 and 2004 is due to a rise in within-group inequality.

The Top versus the Bottom. Next, we separately analyze changes in inequality at the bottom and top of the wage distribution. Figure II displays the wage growth of the 15th, 50th, and 85th percentiles of the wage distribution. We distinguish between the pre- and postunification periods (1975 to 1989 and 1990 to 2004). For men, the 15th and 50th percentiles evolved similarly between 1975 and 1989, and increased by about 16%. Over the same time period, the 85th percentile rose by 27.2% (Panel A). The picture looks very different during the 1990s (Panel C): between 1993 and 2004, the 15th percentile declined by almost 5%, whereas the 50th and 85th percentiles increased by 4% and 13%, respectively.

The pattern for women is somewhat different: between 1975 and 1989, wage gains were highest for the 15th percentile (about 25%, compared to only 16% for men). Over the same time

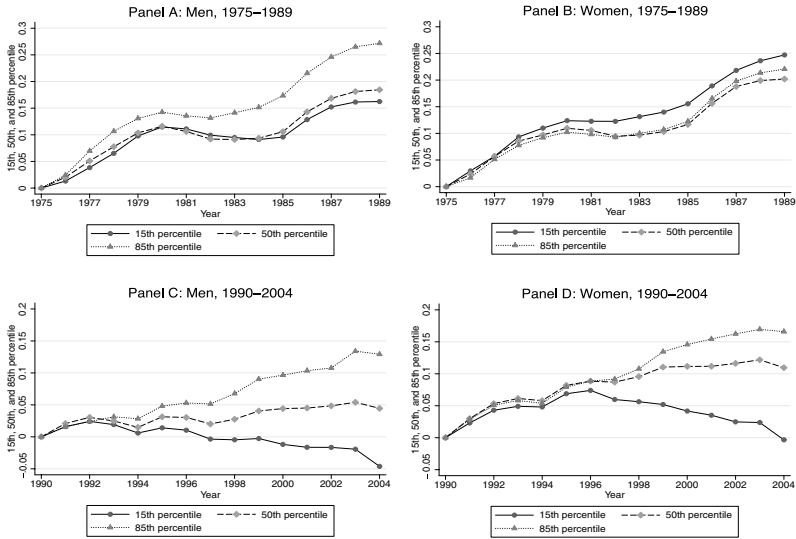


FIGURE II

Indexed Wage Growth of the 15th, 50th, and 85th Percentiles: The Pre- versus the Postunification Period

Source. 2% IABS Sample for full-time workers between 21 and 60 years of age.

The figures show the indexed (log) real wage growth of the 15th, 50th, and 85th percentiles of the wage distribution. Panels A and B refer to the pre-unification period between 1975 and 1989, with 1975 as the base year. Panels C and D refer to the post-unification period between 1990 and 2004, with 1990 as the base year.

period, both the 50th and the 85th percentile grew by about 22%, compared to 16% and 27% for men (Panel B). In the postunification period, in contrast, wages at the 15th percentile stagnated, while the 85th percentile experienced the highest wage growth (17%, Panel D). Unlike the 1980s, in the 1990s wages of women caught up to those of men throughout the entire wage distribution.

Figure III illustrates the divergent developments of the lower and upper ends of the wage distribution during the 1980s and 1990s in a different manner. It shows log real wage growth across the wage distribution, for the period between 1980 and 1990, as well as between 1990 and 2000. In the 1980s, male wages grew across the distribution, but substantially more so at the upper than at the lower tail. Wage growth accelerates beyond the 65th percentile. In contrast, between 1990 and 2000, wage growth has been negative below the 18th percentile, with wage losses at the 5th percentile of more than 10 log wage points. Starting from the

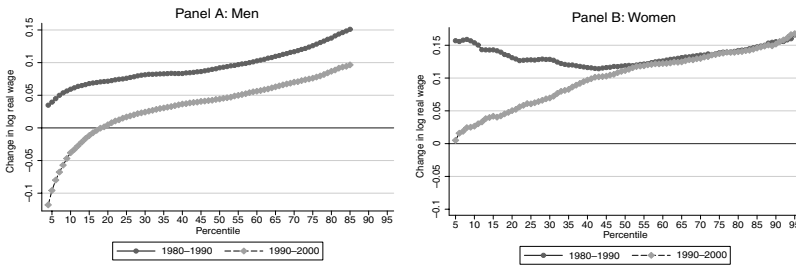


FIGURE III

Wage Growth by Percentile: The 1980s versus the 1990s

Source. 2% IABS Sample for full-time workers between 21 and 60 years of age.

The figures plot wage growth by percentile from 1980 to 1990 and from 1990 to 2000. Due to censoring, we plot wage growth for men up to the 85th percentile only.

15th percentile, wage growth increases roughly linearly along the wage distribution (Panel A).

For women (Panel B), the 1980s are characterized by wage compression at the lower tail of the wage distribution, whereas wage growth at the very top (i.e., the 95th percentile) exceeds that at the median by about 6%.⁵ In the 1990s, in contrast, wage growth increases roughly linearly along the wage distribution.

How do these findings compare with developments in the United States? Both countries show an increase in inequality at the top of the wage distribution during the 1980s and 1990s, although in Germany the increase is more pronounced for men than for women. The two countries differ sharply with respect to the developments at the bottom of the wage distribution. In the United States, the 50–10 wage gap rose substantially in the 1980s, but ceased to increase in the 1990s. In Germany, the pattern is reversed. What about the magnitude of the changes? Because our wage measure is the full-time daily wage, our findings are probably most comparable to those based on the March CPS for weekly full-time earnings. Autor, Katz, and Kearney (2008) report that between 1975 and 2004, the difference between the 90th and 50th percentiles of the male earnings distribution increased by about one log point per year (their Figure III). We find that over the same time period, the 85–50 wage gap in Germany rose by about 0.6 log points per year. However, it is important to bear in mind that in the United States, much of the action in rising wage inequality

5. Because for women less than 5% of wages are censored, we plot wage growth up to the 95th percentile.

since the mid-1980s has been above the 85th percentile.⁶ Hence, topcoding of our data could lead us to substantially underestimate the rise in upper-tail inequality during the 1980s and 1990s.

III.B. Comparison with Existing Studies

These results seem to contradict the usual view that wage inequality in Germany has been largely stable over the past two decades, and in particular during the 1980s. What explains this discrepancy? The reason is that the majority of existing studies on inequality trends in Germany, such as OECD (1996), Steiner and Wagner (1998), and Prasad (2004), are based on a different data set, the German Socio-Economic Panel. Studies based on the IABS are generally consistent with our findings. In particular, Fitzenberger (1999) emphasizes that wage inequality rose during the 1980s, and that the increase was concentrated at the top of the distribution. His study uses data from 1975 to 1990 only and was therefore not able to detect the large increase in lower-tail inequality in the 1990s.⁷ Existing studies based on the GSOEP and our study based on the IABS thus seem to draw different pictures of the trends in inequality in Germany.

We have investigated three possible explanations for the discrepancy between our findings and those based on the GSOEP. First, the GSOEP includes civil servants and the self-employed, but these workers are excluded from the IABS. Second, the wage measure in the IABS includes bonuses as well as other one-time annual payments. In contrast, studies based on the GSOEP typically do not include one-time payments, although they are available. Third, and most importantly, most studies based on the GSOEP construct an hourly wage rate, whereas the wage measure in the IABS is a daily wage.

Here, we provide only a brief overview, focusing on men. A detailed comparison between the GSOEP and IABS can be found in Section 3 of the Online Appendix. Our findings indicate similar trends in inequality whether or not we include civil servants or the self-employed, and whether or not we include bonuses and other one-time payments in our wage measure. Importantly, inequality

6. See, for example, Piketty and Saez (2003), Dew-Becker and Gordon (2005), Goldin and Katz (2007a), Gordon and Dew-Becker (2007), and Autor, Katz, and Kearney (2008).

7. Other studies using the IABS focus on other aspects of the wage structure. For instance, Kohn (2006) concentrates on the recent developments in the 1990s as well as differences between East and West Germany (see also Möller [2005]), whereas Fitzenberger and Kohn (2006) analyze trends in the returns to education.

trends based on monthly wages are also similar to those based on hourly wages. Any differences between the GSOEP and IABS are therefore not adequately explained by differences in the sample used or by differences in the wage measure.

Our analysis further indicates that inequality rose during the 1990s in the GSOEP, in particular at the bottom of the wage distribution, which has also been stressed by Gernandt and Pfeiffer (2006). Our analysis also highlights that measures of inequality are very noisily estimated in the GSOEP. The changes in the 50–15 and 85–50 wage gaps as well as the changes in the standard deviation of log-wages between two years observed in the IABS are almost always within the 95% confidence interval of that observed in the GSOEP. For instance, using the specification that most closely resembles that in the IABS, the 95% confidence intervals for the changes in the 50–15 and 85–50 wage gaps between 1993 and 2002 are [0.044,0.154] and [−0.039,0.103], respectively. Over the same period, the 50–15 and 85–50 wage gaps rose by 0.059 and 0.058 in the IABS. Given the large standard errors in the GSOEP, it is not surprising that earlier studies, such as the 1996 OECD Employment Report, concluded that the German wage structure was largely stable between the mid-1980s to mid-1990s.

Next, we explore several explanations for the rising wage inequality in Germany. Here, we restrict the analysis to men, for two reasons. First, female labor force participation rates rose considerably during the 1980s and 1990s; this is likely to have changed the selection of women into work, which may have had an independent impact on the female wage structure.⁸ Second, although the basic patterns in the wage structure (i.e., upper-tail inequality increased during the 1980s and 1990s, whereas lower-tail inequality mostly increased in the 1990s) are similar for men and women, there are also important differences. For instance, wage gains are substantially larger for women than for men, especially in the 1990s. Moreover, the increase in upper-tail inequality is more pronounced for men than for women, especially in the 1980s. Explaining these differences between men and women would be beyond the scope of this paper.

8. Mulligan and Rubinstein (2008) demonstrate that in the United States it is important to account for the changing selection of women into the workforce when computing male–female wage differentials.

IV. WHY DID WAGE INEQUALITY INCREASE?

IV.A. *The Role of Composition and Prices*

Is the increase in inequality described in the previous section explained by changes in the workforce composition, or do they reflect changes in skill prices? To see why it is important to account for compositional changes in the workforce, suppose that the variance of log wages is increasing in education and age. If the employment share of educated and older workers increases over time, then this will lead to a mechanical rise in inequality, even if skill prices do not change. Lemieux (2006a) stresses that in the United States, a large fraction of the rise in residual wage inequality between 1973 and 2003—and all since 1988—can be attributed to such changes in the workforce composition. This section employs the kernel re-weighting approach developed by DiNardo, Fortin, and Lemieux (1996) to recover the counterfactual wage distribution that we would have observed if the workforce composition had remained unchanged. Like Autor, Katz, and Kearney (2008), we focus on the divergent path of upper- and lower-tail inequality in the 1980s and 1990s, rather than the variance of log wage residuals, as does Lemieux (2006a).

The following expression decomposes the observed density of log wages w in years t and t' into a “price” $g(\cdot)$ and a “composition” function $h(\cdot)$ (see also Autor, Katz, and Kearney [2008]):

$$f(w | t) = \int g_t(w | x, T = t)h_t(x | T = t)dx \quad \text{and}$$

$$f(w | t') = \int g_{t'}(w | x, T = t')h_{t'}(x | T = t')dx.$$

Here, $g(w | x, T = t)$ is the density of log wages in year t for observable characteristics x , and $h(x | T = t)$ is the density of characteristics x in year t . To compute the counterfactual wage distribution in year t' that would have prevailed if the workforce composition were the same as in year t , we simply need to reweight the price function $g_{t'}(\cdot)$ in year t' by the ratio $h_t(\cdot)/h_{t'}(\cdot)$ of the densities of characteristics x in years t and in year t' .⁹ In our application, all regressors (i.e., all possible interactions between three education and eight age groups) are categorical, and the reweighting function is therefore straightforward to compute.

9. This ratio can be calculated as $\frac{h(x|T=t)}{h(x|T=t')} = \frac{\Pr(T=t|x)}{\Pr(T=t'|x)} \cdot \frac{1-\Pr(T=t)}{1-\Pr(T=t')}$.

This decomposition method applies to calculating counterfactuals for overall inequality. To recover counterfactuals for residual inequality, we replace the pricing function $g_t(w | x, T = t)$ with the residual pricing function $g_t(\epsilon | x, T = t)$. The residuals are obtained from OLS regressions on imputed wages that control for all possible interactions between three education and eight age groups. We would like to point out that we do not need to impose any distributional assumptions on the error term to obtain the uncensored part of the counterfactual distribution of overall inequality. However, distributional assumptions are required to compute the counterfactual distribution of residual inequality. Our results are robust to alternative imputation methods (see Section 1 of the Online Appendix for details). It is also important to stress that the decomposition ignores general equilibrium effects, as it is based on the assumption that changes in quantities do not affect changes in prices.

Table I provides a first overview about how wage dispersion, measured as the 50–15 and 85–50 wage gaps, and employment shares vary by age and education groups. We distinguish three education groups, which we label low, medium, and high. The low-skilled are workers who enter the labor market without postsecondary education. The medium-skilled are workers who completed an apprenticeship or a high school degree (*Abitur*). The high-skilled are workers who graduated from a university or college. Due to severe censoring for the high-skilled, we only report the 50–15 wage gap for this group. Note that this may lead us to understate the increase in within-group inequality, as in the United States much of the growth in inequality is found in the top half of the high-skilled group.

Results are based on imputed wages, and cells where the 85th or 50th percentile is censored are marked. Similar to the United States, wage dispersion is increasing in education and—with the exception of the low-skilled—in age. The share of the low-skilled decreased by 13 percentage points between 1976 and 1990, but only by 3.6 percentage points between 1990 and 2004. The share of the high-skilled rose monotonically from 4.7% in 1976 to 14.7% in 2004. The share of workers below the age of 36 rose from 38.9% in 1976 to 41.6% in 1990 and declined to 30.9% in 2004. Table I also highlights that wage dispersion rose *within* education and age groups, suggesting that mechanical changes in the workforce composition cannot fully account for the rise in inequality. Between 1976 and 1990, the medium-skilled above the

TABLE I
WITHIN-GROUP WAGE DISPERSION BY AGE AND EDUCATION (MEN)

	Within-group wage dispersion			Worker share		
	1976	1990	2004	1976	1990	2004
	Low					
<36, 50–15	0.242	0.286	0.500	0.085	0.046	0.034
85–50	0.215	0.231	0.354			
36–45, 50–15	0.226	0.233	0.395	0.088	0.025	0.029
85–50	0.215	0.233	0.275			
>45, 50–15	0.227	0.206	0.335	0.083	0.054	0.026
85–50	0.217	0.245	0.257			
All, 50–15	0.232	0.248	0.474	0.256	0.125	0.089
85–50	0.217	0.238	0.294			
	Medium					
<36, 50–15	0.239	0.241	0.326	0.285	0.336	0.238
85–50	0.270	0.269	0.327			
36–45, 50–15	0.250	0.268	0.307	0.223	0.188	0.280
85–50	0.284	0.346	0.374			
>45, 50–15	0.249	0.260	0.314	0.189	0.261	0.247
85–50	0.297*	0.361	0.408			
All, 50–15	0.252	0.261	0.327	0.697	0.785	0.764
85–50	0.286	0.348	0.379			
	High					
<36, 50–15	0.313	0.283	0.365	0.019	0.034	0.037
36–45, 50–15	0.400*	0.344	0.376	0.016	0.029	0.063
>45, 50–15	0.388*	0.364*	0.414	0.011	0.027	0.046
All, 50–15	0.426*	0.343*	0.410	0.047	0.090	0.147

Source. 2% IABS Sample for men between 21 and 60 years of age working full-time.

Notes. The first three columns of the table report the 50–15 and 85–50 wage gaps for each education/age cell. Results are based on imputed wages. Due to severe censoring for the high-skilled, we only report the 50–15 wage gap here. Cells where the 85th (or 50th) percentile is censored are marked (*). The second set of columns show the worker share of each cell. The low-skilled are workers who enter the labor market with no post-secondary education. The medium-skilled are workers who completed an apprenticeship or have a high school degree (*Abitur*). The high-skilled are workers who graduated from university or college.

age of 45 experienced the sharpest rise in inequality, whereas between 1990 and 2004, the rise in inequality is strongest for the young low-skilled. For this group, the increase in the 50–15 wage gap increases by more than 20 log points. Here, it is important to stress that our data include employees covered by the social security system only; if temporary and marginal employment were included in the data, the increase might be even larger.

Table II reports trends in observed and counterfactual overall and residual inequality. We distinguish three interquartile ranges: 85–15 (Panel A), 85–50 (Panel B), and 50–15 (Panel C). For each wage gap, the first row shows the observed change. The

TABLE II
OBSERVED VERSUS COMPOSITION-CONSTANT OVERALL AND RESIDUAL WAGE INEQUALITY (MEN)

	Overall inequality			Residual inequality		
	1980-1990	1990-2000	1975-2004	1980-1990	1990-2000	1975-2004
Observed	0.083	0.107	0.284	0.065	0.084	0.213
1980 Xs	0.055	0.085	0.195	0.056	0.071	0.181
1990 Xs	0.057	0.087	0.184	0.056	0.069	0.174
2000 Xs	0.045	0.082	0.154	0.057	0.065	0.167
			Panel A: Δ 85/15			
Observed	0.058	0.051	0.167	0.039	0.041	0.121
1980 Xs	0.037	0.023	0.081	0.033	0.026	0.089
1990 Xs	0.039	0.031	0.077	0.033	0.028	0.090
2000 Xs	0.026	0.035	0.060	0.035	0.027	0.090
			Panel B: Δ 85/50			
Observed	0.025	0.056	0.117	0.026	0.043	0.092
1980 Xs	0.018	0.061	0.114	0.023	0.045	0.092
1990 Xs	0.017	0.057	0.107	0.023	0.041	0.085
2000 Xs	0.019	0.046	0.093	0.023	0.037	0.077
			Panel C: Δ 50/15			

Source: 2% IABS Sample for men between 21 and 60 years of age, working full-time.

Notes: In each panel, the first row reports the observed change in the difference between the 85th and 15th (Panel A), 85th and 50th (Panel B), and 50th and 15th (Panel C) percentiles of the overall and residual wage distributions. The next rows show the change that would have prevailed if the age and education distributions were the same as in 1980, 1990, or 2000, respectively. The residuals are obtained from an OLS regression on imputed wages that controls for three education and eight age groups as well as the interaction between these two variables. The imputation assumes that the error term in the wage regression is normally distributed with different variances for each education and each age group.

next rows show the counterfactual change that would have prevailed if the workforce composition were the same as in 1980, 1990, or 2000. The table shows that the overall 85–15 wage gap increased by about 8.3 log points between 1980 and 1990 and by 10.7 log points between 1990 and 2000. If the labor force composition had remained the same as in 1980, the 85–15 wage gap would have risen by 5.5 log points between 1980 and 1990 and by 8.5 log points between 1990 and 2000. The results are similar when we use the workforce composition in 1990 or 2000 to calculate the composition-constant increase in overall inequality.

Table II also illustrates that composition effects play a more important role for the upper tail than for the lower tail of the wage distribution. During both the 1980s and 1990s, changes in workforce composition can explain up to 50% of the increase in upper-tail overall inequality, but at most 15% of the increase in lower-tail overall inequality. This differs from findings for the United States, where the impact of changes in workforce composition is concentrated at the lower end of the earnings distribution (Autor, Katz, and Kearney 2008). Turning to residual inequality, the qualitative patterns are very similar. However, composition effects account for a considerably smaller share of the rise in the residual 85–50 wage gap than in the overall 85–50 wage gap (e.g., 15% versus 37% for 1980 characteristics).

What are the principal factors that explain the role of composition in increasing upper-tail inequality, rising education or population aging? When we account for changes in the education structure, but not in the age structure, the composition-adjusted increase in the 85–50 wage gap is similar to the one when we additionally account for changes in the age structure, during both the 1980s and 1990s. This suggests that rising education is the driving factor.

These results demonstrate that it is important to account for changes in the workforce composition, as emphasized by Lemieux (2006a). However, mechanical changes in the workforce composition do not fully explain the increase in upper-tail inequality in the 1980s, nor do they account for the divergent path of lower-tail inequality in the 1980s and 1990s.

IV.B. Decline in Unionization

Several papers in the United States argue that part of the increase in inequality in the 1980s can be linked to a decline in the minimum wage and unionization (e.g., DiNardo, Fortin,

TABLE III
DECLINE IN UNION COVERAGE (MEN)

	No agreement (%)	Firm-level (%)	Industry-level (%)
1995	12.7	10.1	77.2
1996	13.1	10.6	76.3
1997	13.6	11.4	75.0
1998	19.1	7.7	73.2
1999	22.1	8.3	69.6
2000	24.5	7.3	68.2
2001	24.7	8.2	67.1
2002	25.2	7.9	66.9
2003	25.3	8.6	66.1
2004	27.2	7.1	65.7

Source. LIAB (1995–2004) for men between 21 and 60 years of age working full-time.

Notes. The first column reports the shares of workers neither covered by firm-level nor by industry-level agreements. The second and third columns display the shares of workers covered by firm-level and industry-level agreements, respectively. Entries are weighted to be representative for workers.

and Lemieux [1996]; Lee [1999]; Card and DiNardo [2002]; Card, Lemieux, and Riddell [2004]). We now explore this hypothesis for Germany using the LIAB data.

The German system of collective bargaining differs in several aspects from that in the United States. Most importantly, in Germany the recognition of trade unions for collective bargaining purposes is at the discretion of the employer. Once a firm has recognized a union, collective bargaining outcomes apply de facto to all workers in that firm, no matter whether they are union members or not. A firm recognizes a union either by joining an employer federation (*Arbeitgeberverband*), or by engaging in bilateral negotiations with the union. In the first case, union wages are negotiated at a regional and industry level, typically on an annual basis. Another key difference from the United States is that there is no legal minimum wage in Germany. However, union contracts in Germany specify wage levels for specific groups in specific sectors, and can be considered an elaborate system of minimum wages.

Table III, based on the LIAB data set, shows a remarkable decline in union coverage during the mid-1990s and early 2000s: Between 1995 and 2004, the share of workers covered by an industry-level agreement declined by about 12 percentage points, and the share of workers covered by a firm-level agreement decreased by 3 percentage points. Unfortunately, comparable data on union coverage do not exist before 1995. For the 1980s, only

data on union membership are available. Schnabel and Wagner (2006) report that throughout the 1980s, about 40% of men were union members.¹⁰ By 2000, however, union membership had dwindled to about 31%. This suggests that the decline in unionization in Germany is mostly a phenomenon of the 1990s.

There is strong evidence that unions compress the wage structure in Germany, and more so at the lower end of the wage distribution (see, for example, Fitzenberger and Kohn [2005]; Gerlach and Stephan [2005, 2006]; Dustmann and Schönberg [forthcoming]). A natural question to ask is whether the de-unionization in the 1990s contributed to the rise in inequality over this period, in particular at the lower tail of the wage distribution? To test this hypothesis, we employ the same decomposition method as in Section IV.A and include as regressors all possible interactions between the recognition of an industry- or firm-level agreement and the three education and eight age groups. It is again important to stress that the decomposition method ignores general equilibrium effects; in our application, this means that the union–nonunion wage differential is assumed to be independent of union coverage. Moreover, the decomposition assumes that unionization is exogenous and not itself determined by the same factors that raise wage inequality. A further assumption behind the decomposition method is that there are no spillover effects from the unionized to the nonunionized sector.

Figure IV plots the observed wage changes between 1995 and 2004 as well the counterfactual wage changes that would have prevailed if unionization rates had remained at their 1995 level across the wage distribution. The figure illustrates that workers throughout the wage distribution would have experienced a higher wage growth if unionization rates had not declined. However, the impact of de-unionization is substantially stronger at the lower end of the wage distribution. For instance, wages in 2004 would have been 5.5% higher at the 5th percentile, but only 0.2% higher at the 85th percentile.

We provide more details in Table IV. The first set of columns refer to overall inequality, whereas the second set of columns refer to residual inequality. The residuals are obtained from OLS regressions on imputed wages. In each pair of columns, we first

10. Because in Germany collectively bargained agreements apply to all workers in a firm that recognizes the union, union membership is much smaller than union coverage.

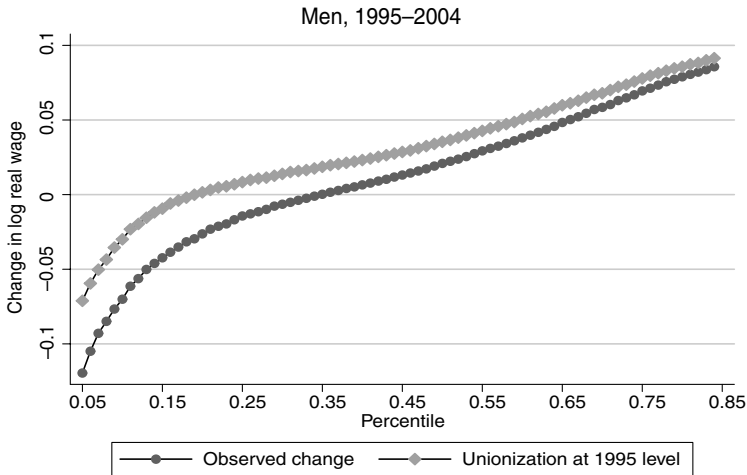


FIGURE IV

Observed versus Composition-Constant Wage Inequality: The Role of
De-unionization

Source. LIAB (1995–2004) for men between 21 and 60 years of age working full-time.

The figure plots actual wage growth by percentile from 1995 to 2004, as well as the wage growth that would have prevailed if unionization had remained at its 1995 level.

hold only unionization constant. We then additionally keep the age and education distribution constant. We again distinguish two interquantile differences: 85–50 and 50–15. We first report the observed change, and then the counterfactual change if the unionization, age, and education distribution had been the same as in 1995 or 2004, respectively. Between 1995 and 2004, the overall 85–50 wage gap rose by 0.068 log points. If unionization rates had remained at their 1995 level, the increase in upper-tail inequality would have been 0.059 log points—a reduction of 13%. Unionization plays a more important role at the lower end of the distribution: de-unionization can account for 28% of the increase in the overall 50–15 wage gap. The findings are similar for residual inequality. In line with the results in Table II, workforce characteristics also play an important role, particularly at the upper end of the distribution.

These results indicate that the decline in union recognition in the 1990s had a profound impact on the wage structure, especially at the lower end of the distribution.

TABLE IV
OBSERVED VERSUS COMPOSITION-CONSTANT OVERALL AND RESIDUAL WAGE
INEQUALITY: THE ROLE OF DE-UNIONIZATION (MEN, 1995–2004)

	Overall inequality		Residual inequality	
	Unionization only	All	Unionization only	All
	Panel A: Δ 85/50			
Observed	0.068	0.068	0.046	0.046
1995 Xs	0.059	0.026	0.038	0.026
2004 Xs	0.057	0.043	0.035	0.020
	Panel B: Δ 50/15			
Observed	0.063	0.063	0.043	0.043
1995 Xs	0.045	0.038	0.034	0.032
2004 Xs	0.044	0.036	0.030	0.022

Source. LIAB (1995–2004) for men between 21 and 60 years of age working full-time.

Notes. In each panel, the first row reports observed changes in the difference between the 85th and 50th (Panel A) and the 50th and 15th (Panel B) percentiles of the overall and residual wage distribution. Column “Unionization only” shows the changes that would have prevailed if the unionization were the same as in 1995 or 2004, respectively. Column “All” shows the corresponding changes that would have prevailed if unionization as well as the education and age distributions were the same as in 1995 or 2004. The residuals are obtained from an OLS regression on imputed wages that controls for three unionization groups (industry-level agreement, firm-level agreement, no agreement), three education groups, and eight age groups, as well as all interactions between these variables. The imputation assumes that the error term in the wage regression is normally distributed with different variances for each education and each age group.

IV.C. The Role of Relative Skill Supplies

An important component of the rise in inequality in the United States is the remarkable increase in the return to education. We now provide evidence on the recent trends in the skill premium in Germany and analyze the explanatory power of demand and supply factors. We focus on the wage differential between medium-skilled workers (i.e., those who completed an apprenticeship) and low-skilled workers (i.e., those who lack postsecondary education). For completeness, we also report results for the wage differential between high-skilled workers (i.e., those with a university degree) and the medium-skilled. However, due to the high incidence of censoring among the high-skilled, these results have to be viewed with considerable caution.

Panel A of Figure V plots the wage differential between the low- and medium-skilled (left y-axis) and the medium- and high-skilled (right y-axis). Our results are based on imputed wages, and our regressions control for all possible interactions between three education and eight age groups. The medium–low and the high–medium wage premiums are age-adjusted and are computed as a weighted average of the respective premium in each age group,

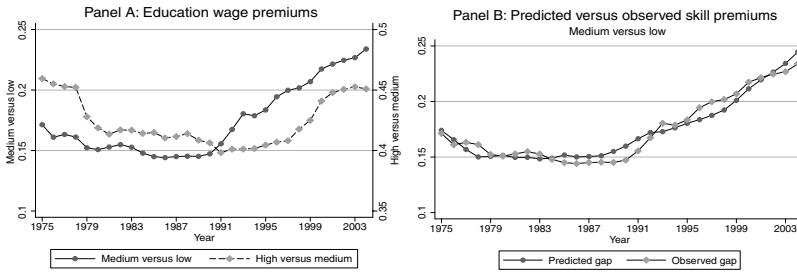


FIGURE V

Fluctuations in Relative Supply and Skill Premiums (Men)

Source. 2% IABS Sample for men between 21 and 60 years of age working full-time.

Panel A depicts on the left axis the fixed-weighted wage ratio of the medium-skilled (apprenticeship degree) and the low-skilled (no postsecondary education) for a composition-constant set of age groups (eight age categories). On the right axis, the figure plots the fixed-weighted wage ratio of the high-skilled (university degree) and medium-skilled for a composition-constant set of age groups. Panel B plots the observed wage gap as well as the gap predicted by the two-level CES production function with three factors, based on estimates in columns (1) in Table V.

where the weights are the employment-weighted worker share in each age group, averaged over the entire sample period.

The medium–low wage differential declined slightly between 1975 and 1989 and then increased sharply by about 0.7 percentage points a year. This timing coincides with the sharp rise in lower-tail wage inequality. It also coincides with the deceleration in the decline of the share of the low-skilled during the 1990s: Whereas during the 1970s and 1980s, the share of low-skilled workers declined from 25.6% in 1976 to 12.5% in 1990, it decreased by only 3.6 percentage points between 1990 and 2004 (Table I). This suggests that fluctuations in supply may have played an important role in the rise of medium–low skill premium. The medium–high wage differential declined between 1975 and 1980, remained roughly constant during the 1980s and mid-1990s, and started to increase in the late 1990s. Contrary to the share of low-skilled workers, the share of university graduates rose at a roughly linear rate during the 1980s and 1990s, from 4.7% in 1976 to 14.7% in 2004 (Table I).

To analyze the importance of fluctuations in labor supply more formally, we adopt a two-level CES production function framework (Goldin and Katz 2007b, 2008). Suppose that output Y depends only on quantities S and U of “skilled” and “unskilled” workers, defined as workers with and without university degrees,

respectively:

$$Y_t = A_t [\lambda_t S_t^\rho + (1 - \lambda_t) U_t^\rho]^{1/\rho}.$$

In this expression, A is total factor productivity and λ_t represents a shift in technology. The aggregate elasticity of substitution between “skilled” and “unskilled” workers is given by $\sigma_{SU} = 1/(1 - \rho)$. “Unskilled” labor is itself a CES subaggregate that depends on the quantities L and M of low- and medium-skilled workers.¹¹

$$(1) \quad U_t = [\theta_t L_t^\eta + (1 - \theta_t) M_t^\eta]^{1/\eta}.$$

The elasticity of substitution between the medium- and the low-skilled is given by $\sigma_{ML} = 1/(1 - \eta)$. Under the assumption that labor is paid its marginal product, the medium-low and skilled-unskilled wage differentials satisfy (2) and (3):

$$(2) \quad \log \left(\frac{w_{S_t}}{w_{U_t}} \right) = \log \left(\frac{\lambda_t}{1 - \lambda_t} \right) - \frac{1}{\sigma_{SU}} \log \left(\frac{S_t}{U_t} \right), \quad \text{and}$$

$$(3) \quad \log \left(\frac{w_{M_t}}{w_{L_t}} \right) = \log \left(\frac{\theta_t}{1 - \theta_t} \right) - \frac{1}{\sigma_{ML}} \log \left(\frac{M_t}{L_t} \right).$$

Relative wages depend on demand shifters λ_t and θ_t , on relative supplies $\log(S_t/U_t)$ and $\log(M_t/L_t)$, and on the respective elasticities of substitution σ_{SU} and σ_{ML} . We estimate (2) and (3) in two steps. In the first step, we estimate (3) by OLS, and substitute for $\log(\theta_t/[1 - \theta_t])$ with a linear time trend. We then use the estimate for σ_{ML} to compute the quantity U_t of the unskilled labor supplied in (1). In the second step, we estimate (2) by OLS, this time substituting $\log(\lambda_t/[1 - \lambda_t])$ with a linear time trend. To account for generated regressor bias in the first step, we bootstrap standard errors in the second step. Although our wage differentials refer to men only, we include women in our supply measures.¹²

Results are reported in Table V, columns (1) and (2). For the medium- versus low-skilled, we obtain an estimate for the elasticity of substitution of about $\sigma_{ML} = 5$ (1/0.206). This estimate is considerably larger than the estimate of around 1.4 typically found in the United States, but this is likely because the typical

11. This assumption implies that an increase in skilled labor relative to unskilled labor does not affect the wage premium of the medium-skilled relative to the low-skilled.

12. See Appendix I.A. for a detailed description how the wage premiums and the relative supply measures are computed.

TABLE V
REGRESSION MODELS FOR THE EDUCATION WAGE GAP, 1975–2004 (MEN)

	Two-level CES		Two-factor CES
	Medium versus low (1)	Skilled versus unskilled (2)	High/medium versus low (3)
Relative supply	–0.206 (0.018)	0.482 (0.195)	–0.252 (0.020)
Time	0.012 (0.001)	–0.016 (0.006)	0.016 (0.001)
R^2	.941	.184	.938

Source. 2% IABS Sample for men between 21 and 60 years of age working full-time.

Notes. Columns (1) and (2) report results based on a two-level CES production function model that combines the low- and medium-skilled into one CES aggregate. Estimation follows in two steps. We first regress the wage premium of the medium-skilled relative to the low-skilled on a linear time trend and on the supplied quantities of the medium-skilled relative to those of the low-skilled. We then use these estimates to compute the quantities supplied by the “unskilled” (i.e., a mixture of the low- and medium-skilled). In the second step, we regress the wage premium of the “skilled” (i.e., the high-skilled) relative to that of the unskilled on a linear time trend and the supplied quantities of the skilled relative to those of the unskilled. Column (3) reports results based on a CES production function model with two factors (high/medium versus low). Here, we regress the wage premium of the high- or medium-skilled relative to that of the low-skilled on a linear time trend and the respective relative supplied quantities. See Appendix I.A for a detailed description of how relative skill premiums and relative supplies are constructed.

U.S. estimate refers to the elasticity of substitution between low- and high-skilled, which are presumably less perfect substitutes than the low- and medium-skilled considered here.¹³ This model can explain 94% of the time variation in the wage premium of the medium-skilled relative to the low-skilled. Figure V, Panel B, provides a visual illustration of the relationship between relative supplies and relative wages for the low- versus the medium-skilled. The panel plots the observed relative wage gap as well as the gap predicted by the two-level CES production function using the estimates in Table V, column (1), against time. The figure confirms our previous conclusions: the model predicts trends in the wage differential between the medium- and low-skilled very well.

In contrast, for the “skilled” (i.e., university graduates) versus the “unskilled” (i.e., a CES aggregate of the low- and medium-skilled), the model performs poorly: the relative supply coefficient estimate is positive, and the coefficient on the linear time trend is negative. The model can explain only 18% of the time variation in

13. A complementary explanation for the higher elasticity of substitution in Germany is that wages in Germany are less responsive to supply and demand shocks than wages in the United States, due to higher unionization rates.

the relative wage premium between the high- and the combined medium- and low-skilled (Table V, column (2)).

This could be a sign that a model that combines the low- and medium-skilled into one CES aggregate is misspecified. In the third column of Table V, we report results based on a two-factor CES production function that includes the medium- and the high-skilled in one category and assumes that there is only one skill premium: high/medium versus low. This model appears to perform well, and can explain about 94% of the the time variation in the wage premium of the high-/medium-skilled relative to the low-skilled.

These results suggest that the deceleration in the decline of low-skill employment shares in the 1990s had a profound impact on skill prices, and thus the wage structure—particularly in the lower tail of the wage distribution.¹⁴ What caused this deceleration? Although more research is needed on this issue, the timing suggests that it is a consequence of the breakdown of the communist regimes in Eastern Europe, as well as the reunification of East and West Germany. These events lead to a large inflow of East Germans, Eastern Europeans, and ethnic Germans from Eastern Europe into the West German labor market. Many of these immigrants were low-skilled; see Bauer et al. (2005) and Glitz (2007) for more details.

Next, we provide some evidence of a rising demand for the high-skilled, relative to the medium- and low-skilled, by computing between-occupation demand shifts for each education group relative to a base year (see Katz and Murphy [1992]):

$$\Delta D_k = \sum_j \left(\frac{E_{jk}}{E_k} \right) \left(\frac{\Delta E_j}{E_j} \right).$$

Here k indexes skill groups and j indexes occupations, E_j is total labor input measured in efficiency units in occupation j , and E_{jk}/E_k is group k 's employment share (in efficiency units) in occupation j in the base year. We prefer this measure of demand shifts over that implied by the CES production function framework, because it is not based on relative wage differentials,

14. Existing studies on skill premiums in Germany, such as Abraham and Houseman (1995) and Acemoglu (2003), focus on the wage differential of college graduates relative to that of non-college graduates, and use data until the early or mid-1990s only. This explains why these studies fail to detect the deceleration in the decline of low-skill employment shares in the 1990s.

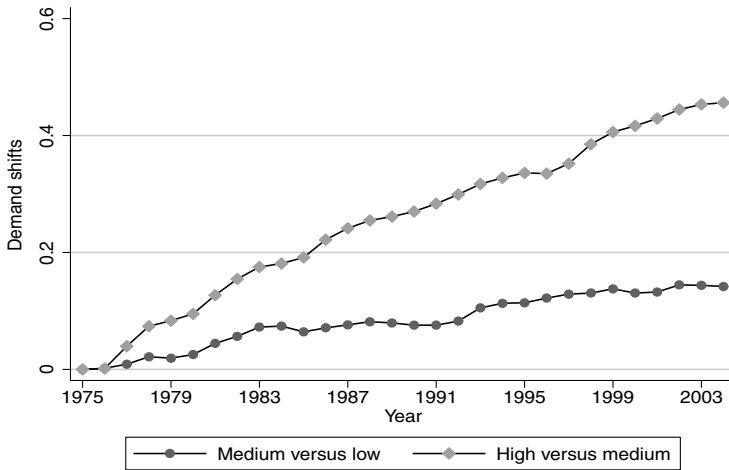


FIGURE VI

Between-Occupation Demand Shifts: Medium/Low versus High/Medium (Men)

Source. 2% IABS Sample for men between 21 and 60 years of age working full-time.

The figure plots between-occupation demand shifts for the medium-skilled relative to the low-skilled, and for the high-skilled relative to the medium-skilled, with 1975 as the base year. The demand shift of group k relative to base year 1975 is computed as $\Delta D_k = \sum_j (E_{jk}/E_k)(\Delta E_j/E_j)$, where k indexes education, and j indexes occupation, E_j is total labor input measured in efficiency units in occupation j , and E_{jk}/E_k is group k 's employment share (in efficiency units) in occupation j in the base year. We distinguish 82 occupations.

which may be seriously compromised due to the high incidence of wage censoring among the high-skilled, and because it does not require an estimate for the elasticity of substitution. It is important to stress, however, that this index does not account for the impact of price changes on observed employment shifts. Thus, if positive skill supply shocks cause expansions of high-skill occupations, this demand index will overstate the "demand" shock. Conversely, if skill premiums rise due to demand shifts, occupational shifts will be smaller than the price-constant counterfactual, thus leading the index to understate the "demand" shift. Figure VI plots the between-occupation demand shifts of the medium- versus low-skilled, and the high- versus the medium-skilled. The figure indicates a considerable demand shift favoring the high-skilled relative to the medium-skilled during the 1980s and 1990s. This demand shift was substantially larger than that favoring the medium-skilled relative to the low-skilled. To put these numbers into perspective, Katz and Murphy (1992)

report a between-industry demand shift of college graduates relative to high school graduates of 0.067 between 1979 and 1987.¹⁵ Over the same period, we find a between-occupation demand shift of 0.157 and a between-industry demand shift of 0.084 for the high- relative to the medium-skilled.

IV.D. Polarization

Our findings highlight the importance of distinguishing between changes in lower- and upper-tail inequality. Moreover, Figure VI suggests that demand shifts for the high-skilled relative to the medium-skilled exceed those for the medium-skilled relative to the low-skilled. Autor, Katz, and Kearney (2006, 2008) provide a simple demand-based explanation for this pattern (see also Autor, Levy, and Murnane [2003]). The idea is that technological change—in particular, the implementation of computer technology—differently affects the bottom and top ends of the skill distribution. Suppose that computerization decreases the demand for jobs that require routine analytical or clerical skills, and increases the demand for abstract, nonroutine cognitive and interpersonal skills. Computer technology neither strongly complements nor strongly substitutes for manual skills. If routine analytical skills are predominantly used in the middle, and manual and interactive skills at the bottom and top of the wage distribution, then technological change may lead to “polarization” (Goos and Manning 2007) and thus affect the wage distribution differently at the bottom and the top. For Germany, Spitz-Oener (2006) provides evidence that between 1979 and 1999, the demand for interactive and nonroutine analytical skills increased, while the demand for routine-cognitive skills declined. Much of these changes can be linked to computerization. This section further investigates this hypothesis for Germany.

We first test a key assumption behind this approach: Non-routine cognitive tasks are predominantly used at the upper ends, whereas routine and manual tasks are more common at the middle and lower ends of the wage or skill distribution. To this end, we rank the 340 occupations in our data according to their median wages and group them into 100 equal-sized groups. Figure VII, Panel A, plots the smoothed share of men performing manual, abstract, and routine tasks in each occupation, using the 1991 wave

15. This number is based on the between-industry demand shifts reported in Table VI and computed as $\exp(0.029 + 0.036) - 1$.

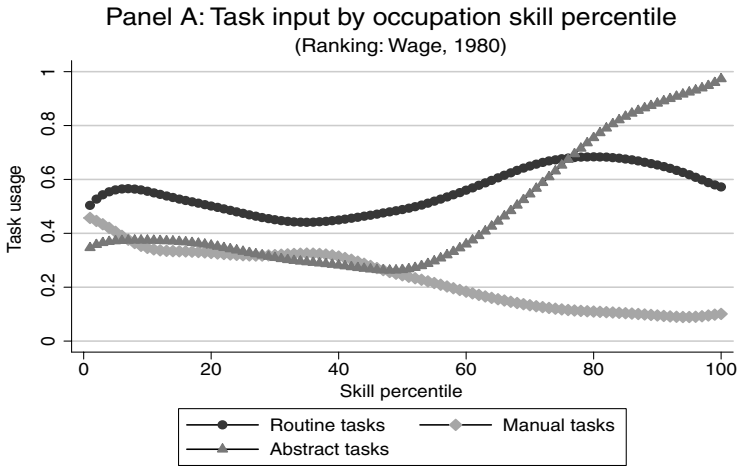


FIGURE VII

Change in Occupation's Employment Shares and Task Usage by Skill Percentile in 1980 (Men)

Source: German Qualification and Career Survey, 1991, full-time men between 21 and 60 years of age.

Panel A depicts the share of workers performing routine, manual, and abstract tasks by the 1980 Occupational Percentile, using a locally weighted smoothing regression with bandwidth 0.5 and 100 observations. Occupations at the 3-digit level are ranked according to employment-duration weighted median wages and then grouped into 100 equal-sized groups, using the IAB data. Routine tasks include calculating and bookkeeping; correcting texts/data; equipping machines; shipping and transporting; and filing and archiving. Manual tasks include repairing or renovating houses/apartments/machines/vehicles; restoration of art/monuments; serving or accomodating; cleaning; and rubbish removal. Abstract tasks include research, evaluation, and planning; making plans, constructing, designing, and sketching; working out rules/prescriptions; using and interpreting rules; lobbying, coordinating, and organizing; teaching and training; selling, buying, and advertising; entertaining and presenting; employing and managing personnel.

of the German Qualification and Career Survey.¹⁶ The share of workers performing manual tasks declines monotonically with the occupational wage. Interestingly, abstract tasks are somewhat more common at the lower end of the occupational wage

16. The survey is conducted jointly by the Federal Institute for Vocational Education and Training (BIBB) and the Institute for Employment (IAB), with the goal of tracking skill requirements of occupations. See Spitz-Oener (2006) for a detailed description of the data. Routine tasks include calculating and bookkeeping; correcting texts/data; equipping machines; shipping and transporting; and filing and archiving. Manual tasks include repairing or renovating houses/apartments/machines/vehicles; restoring art/monuments; serving or accomodating; cleaning; and rubbish removal. Abstract tasks include research, evaluation, and planning; making plans, constructing, designing, and sketching; working out rules/prescriptions; using and interpreting rules; lobbying, coordinating, and organizing; teaching and training; selling, buying, and advertising; entertaining and presenting; and employing and managing personnel.

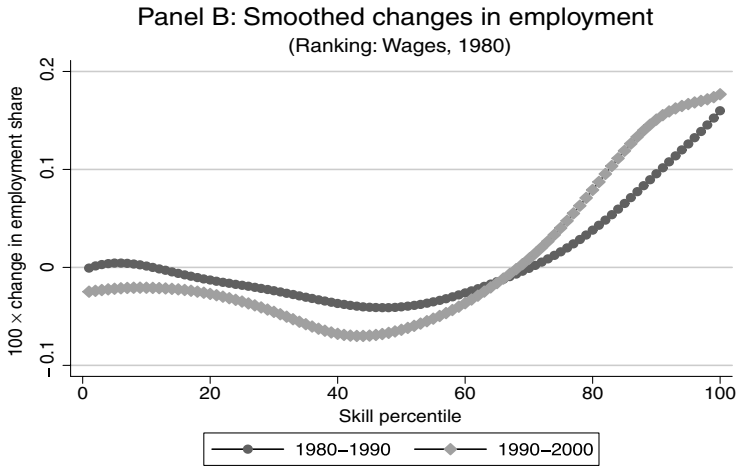


FIGURE VII

Change in Occupation's Employment Shares and Task Usage by Skill Percentile in 1980 (Men)

Source: 2% IABS Sample for men between 21 and 60 years of age working full-time.

Panel B depicts log changes in employment shares, where the 3-digit occupations in our data are ranked according to their mean years of education (employment duration weighted) and then grouped into 100 equal-sized groups. We employ locally weighted smoothing regressions with 100 observations and bandwidth 0.8.

distribution than in the middle, and (as expected) most common at the high end. The relationship between routine task usage and occupational wages is likewise nonmonotone, with the share of workers performing routine tasks being highest around the 80th wage percentile.

Following Goos and Manning (2007) and Autor, Katz, and Kearney (2008), we next test whether occupations in the middle of the skill distribution experienced lower growth rates than occupations at the bottom and top of the skill distribution. We again rank occupations by their median wages and group them into 100 equal-sized groups. Figure VII, Panel B, plots the smoothed log changes in the employment shares by occupational skill for two periods: 1980–1990 (when wage inequality rose mostly at the top) and 1990–2000 (when wage inequality rose at both the top and the bottom). Both decades are characterized by polarization in employment growth: employment shares of occupations at the top of the wage distribution increased substantially in both periods. Employment shares of occupations in the middle of the wage

distribution declined. Occupations at the low end of the wage distribution have experienced neither strong losses nor strong gains.

In order to more formally analyze the relationship between changes in occupational employment shares by skill percentile (measured as median wages) and wage changes by wage percentile in each decade, we estimate OLS regressions of the following form (see also Autor, Katz, and Kearney [2008]):

$$\Delta E_{p\tau} = \alpha_{\tau} + \beta_{\tau} \Delta w_{p\tau} + \epsilon_{p\tau}.$$

In this expression, $\Delta E_{p\tau}$ denotes the change in log occupational employment at skill percentile p and decade τ , and $\Delta w_{p\tau}$ represents the change in the daily wage at wage percentile p in the same decade. We estimate $\beta_{80} = 0.43$ (t -value: 1.28) for the 1980s, and $\beta_{90} = 0.65$ (t -value: 1.56), suggesting that employment and wage changes are weakly positively correlated. However, in both the 1980s and the 1990s this masks important differences at the lower and upper ends of the wage distribution: below the median, the correlation between employment and wage changes is negative (we estimate $\beta_{80,p<50} = -3.05$ (3.09) for the 1980s, and $\beta_{90,p<50} = -0.97$ (1.81) for the 1990s); in contrast, above the median the correlation is positive (we estimate $\beta_{80,p>50} = 1.77$ (2.43) for the 1980s, and $\beta_{80,p>50} = 3.25$ (2.74) for the 1990s). These findings differ somewhat from those for the United States, where changes in employment and changes in wages are strongly positively correlated in both decades throughout the entire distribution (Autor, Katz, and Kearney 2008).

These results are difficult to reconcile with a simple theory of skill-biased technological change, according to which technology symmetrically affects the bottom and the top of the wage distribution. They are consistent with a nuanced view of skill-biased technological change, according to which technology substitutes for routine tasks, but complements nonroutine tasks, and thereby increases the demand for workers located mostly at the top of the wage distribution. Moreover, the negative correlation between employment and wage changes below the median speaks against a demand-based explanation for the rise in lower-tail inequality. Our previous findings are consistent with the view that the rise in lower-tail inequality may be better explained by episodic changes, most importantly the decline in unionization and the changes in the skill mix of the workforce in the 1990s.

V. DISCUSSION AND CONCLUSIONS

This paper challenges the common view that the rise in wage inequality is a phenomenon observed only in a handful of countries, such as the United States, the United Kingdom, and Canada. In particular, we revisit trends in wage inequality in (West) Germany, a country that so far has been singled out as having a stable wage distribution. Based on a large administrative data set, we find that wage inequality in Germany increased in the 1980s, but mostly at the top of the distribution. In the early 1990s, wage inequality started to rise at the bottom of the distribution as well. This holds for both men and women, although the rise in upper-tail inequality is somewhat more pronounced among men. Hence, although the United States and Germany experienced similar changes at the top of the distribution during the 1980s and 1990s, the two countries markedly differ with respect to the lower end of the wage distribution: The rise in lower tail inequality that happened in the United States in the 1980s came a decade later in Germany.

We explore several explanations for the increase in inequality. Changes in workforce composition play an important role in explaining changes in the wage structure. However, they cannot fully account for the divergent path of upper and lower tail inequality in the 1980s, or for the divergent path of lower tail inequality in the 1980s and 1990s. Moreover, our results are consistent with a polarization of work: occupations that were at the top of the 1980 wage distribution experienced the largest growth rates, whereas occupations in the middle declined relative to occupations at the bottom. This speaks against a simple theory of skill-biased technological change, according to which technology increases the demand for skilled jobs relative to that of unskilled jobs. It is, however, consistent with a more nuanced view of technological change, according to which technology asymmetrically affects the bottom and the top of the wage distribution, by substituting for routine tasks and complementing nonroutine tasks (e.g., Autor, Levy, and Murnane [2003]). Because results consistent with a polarization of labor demand have now been found in three advanced countries,¹⁷ this may begin to provide the unifying international evidence on technological change that so

17. See Autor, Katz, and Kearney (2006, 2008) for the United States and Goos and Manning (2007) for the United Kingdom.

far has been absent—although more research for other advanced countries is needed to fully assess this hypothesis.

Can the polarization of work alone account for the finding that in the 1980s inequality mostly rose at the top, whereas in the 1990s inequality rose both at the top and at the bottom? One piece of evidence against this hypothesis is that in Germany, employment and wage changes are negatively correlated for occupations below the median. The widening of the wage distribution at the bottom may therefore be better explained by episodic events, such as supply shocks and changes in labor market institutions. The hypothesis we put forward here is that these episodic events happened in the 1980s in the United States, but in the 1990s in Germany.

First, the 1980s in the United States are characterized by an erosion of labor market institutions such as labor unions, as well as a declining minimum wage. In Germany, this process appears to have started only in the 1990s. Several papers show that these changes are important in explaining changes in inequality in the United States, in particular at the lower end of the wage distribution (e.g., DiNardo, Fortin, and Lemieux [1996]; Lee [1999]; and Card and DiNardo [2002]). We find that between 1995 and 2004, de-unionization can explain 28% of the increase in lower-tail inequality.

Second, skill upgrading started to slow down in the United States in the early 1980s. In Germany, there is little evidence for a slowdown in skill upgrading during the 1980s. In the 1990s, however, the decline in the share of the low-skilled started to decelerate, whereas the share of the high-skilled kept increasing at a similar rate as during the 1980s. Several U.S. studies show that fluctuations in relative labor supply play an important role in explaining trends in the skill premium (e.g., Katz and Murphy [1992]; Card and Lemieux [2001]; Autor, Katz, and Kearney [2008]). We find that fluctuations in relative supply go a long way in explaining trends in the wage differential between the medium- and low-skilled, but do not predict trends in the wage differential between the high- and the combined medium/low-skilled.

Why did the slowdown in skill upgrading happen a decade earlier in the United States than in Germany? Although more research is needed on this topic, the relative increase in the share of the low-skilled that started in 1990 in Germany is likely to be a consequence of the breakdown of the communist regimes in Eastern Europe and of the reunification of East and West Germany.

These events led to a large inflow of relatively low-skilled East Germans, Eastern Europeans, and ethnic Germans from Eastern Europe into the West German labor market; many of these immigrants were low-skilled (see Bauer et al. [2005] and Glitz [2007] for more details).

APPENDIX I: IABS, 1975–2004

A. The Structural Break in 1984

Starting in 1984, one-time payments, such as bonuses, are included in our wage measure (see Bender et al. [1996] for more details); as Steiner and Wagner (1998) point out, ignoring this structural break results in a spurious increase in inequality. We correct for this break in a way similar to that of Fitzenberger (1999). The correction is based on the idea that higher quantiles appear to be more affected by the structural break than lower quantiles, and thus have to be corrected upward before 1984. To this end, we estimate locally weighted regressions of the wage ratio between 1982 and 1983 (i.e., before the break), and between 1983 and 1984 (i.e., after the break) on the wage percentiles in 1983 and 1984, respectively, using a bandwidth of 0.2. We then compute the correction factor as the difference between the smoothed values of the wage ratios in 1983 and 1984. In order to account for differential overall wage growth between the periods from 1982 to 1983 and from 1983 to 1984, we subtract from our correction factor the smoothed value of the wage ratio in 1983, averaged between the second and fortieth quantiles. In a final step, we correct wages prior to 1984 by multiplying them by 1 plus the correction factor.

B. Sample Selection and Variable Description

Sample Selection. In addition to the selection criteria described in Section II, we drop wage spells of workers in apprenticeship training. We further impose the restriction that daily wages (in 1995 DM) have to be at least 20 DM. For the wage analysis, we use full-time spells only. Part-time spells are included in our relative supply measures, though with a lower weight (see below).

Wages. Our wage variable is the average daily wage. If a worker worked for more than one employer in a year, we compute a weighted average, where the weights are the shares worked for each employer. Our results are employment duration-weighted: a worker who works 365 days a year gets a weight of 365, whereas

a worker who works only 7 days a year gets a weight of 7. Wages are deflated by the Consumer Price Index, with 1995 as the base year. As of 1999, wages are measured in euros; we use an exchange rate of 1 euro = 1.95583 DM to convert euros into Deutschmarks. Wages are censored at the highest level of earnings that is subject to social security contributions. More specifically, an individual may receive a wage increase from her current firm in the middle of the year that puts her wage above the censoring limit. In this case, the wage we observe is an employment-duration weighted average between the precensoring wage and the censoring limit.¹⁸ For this reason, we code wages as censored if they are three Deutschmarks below the censoring limit. Our results are very similar if we further reduce the censoring limit by six Deutschmarks.

Education. Our education variable distinguishes three groups, which we label low, medium, and high. The low-skilled are workers who enter the labor market without postsecondary education. The medium-skilled are workers who completed an apprenticeship or a high school degree (*Abitur*). The high-skilled are workers who graduated from a university or college (*Universität* or *Fachhochschule*). In the raw data, the education variable is missing for 10.6% of observations. However, because our data are longitudinal, we can impute a value by looking at past and future values of the education variable. The analysis in this paper is based on the education variable IP1 provided by Fitzenberger, Osikominu, and Völter (2006). This variable is missing for only 1.3% of observations. We code missings as low-skilled. Our findings are similar if individuals with missing education are dropped.

Relative Supply Measures. Quantities supplied are measured in efficiency units. To compute the efficiency units, we calculate the mean real wage (based on imputed wages) by year, sex, education, and age. In each year, we normalize wages with the mean wage of medium-skilled men between 31 and 35. The efficiency unit for each group is computed as the arithmetic average over all years. The quantity supplied by each education group in a given year is the number of days worked in that year, multiplied by the respective efficiency unit, summed up over all workers in the education group. Part-time work is included, but weighted down by 0.67 ("long" part-time) or 0.5 ("short" part-time).

18. If the individual switches firms and earned a wage below the censoring limit at her old firm, but a wage above the censoring limit at her new firm, we observe the true wage at the old firm, and the censoring limit at the new firm.

Education Wage Differentials. The medium-low and the high-medium wage differentials are based on imputed wages that assume that the error term is normally distributed with the same variance for each education and age group. This differs from our baseline imputation rule, which allows different variances across education and age groups. We chose this restriction because the high-medium wage differential is now less sensitive to the chosen censoring limit.¹⁹ Our OLS regressions control for three education and eight age groups as well as all possible interactions; this specification therefore allows different wage premiums by age group. The medium-low and high-medium wage premiums are computed as a weighted average of the respective premium in each age group, where the weights are the employment-weighted worker shares in each age group, averaged over the entire sample period. To compute the wage differential between “skilled” (i.e., workers with a university degree) and “unskilled” workers (i.e., a mixture of the low- and medium-skilled), we predict age-adjusted wages for each education group in the same way. The wage of the “unskilled” is a weighted average of the wage of the low- and medium-skilled, where the weights are the employment-weighted worker shares of each education group, averaged over the entire sample period. The wage of the mixture of the high- and medium-skilled (Table V, column (3)) is computed in the same way.

C. Imputation of Censored Wages

We impute censored wages in the IABS and LIAB under the assumption that the error term in the wage regression is normally distributed, with different variances for each education and each age group. To this end, we estimate censored regressions (allowing a different variance for each education and age group) separately for each year (thereby allowing the variance in each group to vary across years). We control for all possible interactions between three education and eight age groups. For each year, we impute censored wages as the sum of the predicted wage and a random component, drawn from a normal distribution with mean zero and a separate variance for each education and age group, obtained from the standard error of the forecast. A comparison between OLS estimates based on imputed wages and Tobit estimates based

19. For instance, in 1975 the high-low wage gap is 12 percentage points higher when the censoring limit is reduced by 6 Deutschmarks and the variance is allowed to vary by education and age. If the variance is restricted to be the same by education and age, lowering the censoring limit makes little difference.

on censored wages shows that both the estimates and the standard errors are almost identical.

We have also imputed wages under four additional distributional assumptions. First, we continue to assume that the error term is normally distributed, but we restrict the variance to be the same across all education and age groups, or allow for a different variance for each education–age cell. Second, we assume that the upper tail of the unconditional wage distribution follows a Pareto distribution. Third, similarly to U.S. studies based on the CPS, we replace censored observations by 1.5 times the censoring limit. Imputations based on the normal distribution, however, suggest that this imputation factor is too high, and is in fact closer to 1.2. As a fourth robustness check, we therefore replace censored wages by 1.2 times the censoring limit. Findings for these alternative imputation methods can be found in Section 1 in the Online Appendix.

We use a third data set, the GSES (German Structure of Earnings Survey), to evaluate which imputation method performs best at recovering the censored part of the wage distribution. The GSES is a survey of about 22,000 establishments conducted by the German Federal Statistical Office. A scientific usefile is currently available for the year 2001. The main advantage of the GSES compared to the IABS is that wages are not censored. We find that the imputation method that assumes that the error term is normally distributed with a different variance by age and education works somewhat better than the other imputation methods. This method was therefore chosen for our baseline results.

APPENDIX II: LIAB, 1995–2004

In addition to the selection criteria described in Section II, we discard all firms for which the union variable is missing. The maximum number of establishments lost due to this restriction is 72 (around 0.8%) in 2001. We further restrict our sample to firms that employ at least one man working full time between the ages of 21 and 60.

Most of the variables in the LIAB closely correspond to those in the IABS, but there are a few exceptions. First, the wage variable refers to the first of July in the LIAB as opposed to an annualized average, as in the IABS. Second, because the LIAB does not contain complete biographies of workers, it is impossible to impute

missing observations in the education variable. We therefore code missing observations as an additional education category.

UNIVERSITY COLLEGE LONDON
 INSTITUT FÜR ARBEITSMARKT- UND BERUFSFORSCHUNG, NÜRNBERG
 UNIVERSITY COLLEGE LONDON AND INSTITUT FÜR ARBEITSMARKT- UND
 BERUFSFORSCHUNG, NÜRNBERG

REFERENCES

- Abraham, Katherine G., and Susan N. Houseman, "Earnings Inequality in Germany," in *Differences and Changes in Wage Structures*, Richard B. Freeman and Lawrence F. Katz, eds. (Chicago and London: University of Chicago Press, 1995).
- Acemoglu, Daron, "Technical Change, Inequality and the Labor Market," *Journal of Economic Literature*, 40 (2002), 7–72.
- , "Cross-Country Inequality Trends," *Economic Journal*, 113 (2003), F121–F149.
- Atkinson, Anthony B., *The Changing Distribution of Earnings in OECD Countries* (Oxford, UK: Oxford University Press, 2008).
- Autor, David H., Lawrence F. Katz, and Melissa S. Kearney, "The Polarization of the U.S. Labor Market," *American Economic Review Papers and Proceedings*, 96 (2006), 189–194.
- , "Trends in U.S. Wage Inequality: Re-assessing the Revisionists," *Review of Economics and Statistics*, 90 (2008), 300–323.
- Autor, David H., Frank, Levy, and Richard J. Murnane, "The Skill Content of Recent Technological Change: An Empirical Investigation," *Quarterly Journal of Economics*, 118 (2003), 1279–1333.
- Bauer, Thomas, Barbara, Dietz, Klaus F. Zimmermann, and E. Zwintz, "German Migration: Development, Assimilation, and Labour Market Effects," in *European Migration. What Do We Know?* Klaus F. Zimmermann, ed. (Oxford, UK: Oxford University Press, 2005).
- Bender, Stefan, Jürgen, Hilzendege, Götz, Rohrer, and Helmut Rudolph, *Die Beschäftigtenstichprobe 1975–1990, Beiträge zur Arbeitsmarkt- und Berufsforschung 197* (Nuremberg, Germany: IAB, 1996).
- Boudarbat, Brahim, Thomas, Lemieux, and W. Craig Riddell, "Recent Trends in Wage Inequality and the Wage Structure in Canada," in *Dimensions of Inequality in Canada*, David A. Green, and Jonathan R. Kesselman, eds. (Vancouver, BC: UBC Press, 2006).
- Bound, John, and George Johnson, "Changes in the Structure of Wages in the 1980s: An Evaluation of Alternative Explanations," *American Economic Review*, 82 (1992), 371–392.
- Card, David, and John E. DiNardo, "Skill-Biased Technological Change and Rising Wage Inequality: Some Problems and Puzzles," *Journal of Labor Economics*, 20 (2002), 733–783.
- Card, David, Francis Kramarz, and Thomas Lemieux, "Changes in the Relative Structure of Wages and Employment: A Comparison of the United States, Canada, and France," *Canadian Journal of Economics*, 32 (1999), 843–877.
- Card, David, and Thomas Lemieux, "Can Falling Supply Explain the Rising Return to College for Younger Men?" *Quarterly Journal of Economics*, 116 (2001), 705–746.
- Card, David, Thomas Lemieux, and W. Craig Riddell, "Unions and Wage Inequality," Symposium on "What Do Unions Do—A Retrospective after Two Decades," *Journal of Labor Research*, 25 (2004), 519–562.
- DiNardo, John E., Nicole Fortin, and Thomas Lemieux, "Labor Market Institutions and the Distribution of Wages, 1973–1992: A Semiparametric Approach," *Econometrica*, 64 (1996), 1001–1044.
- Dew-Becker, Ian, and Robert J. Gordon, "Where Did the Productivity Growth Go? Inflation Dynamics and the Distribution of Income," *Brookings Papers on Economic Activity*, 2 (2005), 67–127.

- Dustmann, Christian, and Uta Schönberg, "Training and Union Wages," *Review of Economics and Statistics*, forthcoming.
- Fitzenberger, Bernd, *Wages and Employment Across Skill Groups: An Analysis for West Germany* (Heidelberg: Physica/Springer, 1999).
- Fitzenberger, Bernd, and Karsten Kohn, "Gleicher Lohn für gleiche Arbeit? Zum Zusammenhang zwischen Gewerkschaftsmitgliedschaft und Lohnstruktur in Westdeutschland 1985–1997," *Journal for Labour Market Research*, 38 (2005), 125–146.
- , "Skill Wage Premia, Employment, and Cohort Effects: Are Workers in Germany All of the Same Type?" IZA Discussion Paper No. 2185, 2006.
- Fitzenberger, Bernd, Anderonke Osikominu, and Robert Völter, "Imputation Rules to Improve the Education Variable in the IAB Employment Subsample," *Schmollers Jahrbuch (Journal of the Applied Social Sciences)*, 126 (2006), 405–436.
- Freeman, Richard B., and Lawrence F. Katz, "Introduction and Summary," in *Differences and Changes in Wage Structure*, Richard B. Freeman and Lawrence F. Katz, eds. (Chicago: The University of Chicago Press, 1995).
- Gerlach, Knut, and Gesine Stephan, "Bargaining Regimes and Wage Dispersion," *Jahrbücher fuer Nationalökonomie und Statistik*, 226 (2006), 629–645.
- , "Wage Settlements and Wage Setting—Results from a Multi-level Model," *Applied Economics*, 37 (2005), 2297–2306.
- Gernandt, Johannes, and Friedhelm Pfeiffer, "Rising Wage Inequality in Germany," ZEW Discussion Paper No. 06-019, 2006.
- Glitz, Albrecht, "The Labour Market Impact of Immigration: Quasi-experimental Evidence," University of Pompeu Fabra, Mimeo, 2007.
- Goldin, Claudia, and Lawrence F. Katz, "Long-Run Changes in the Wage Structure: Narrowing, Widening, Polarizing," *Brookings Papers on Economic Activity*, 2 (2007a), 135–165.
- , "The Race between Education and Technology: The Evolution of U.S. Educational Wage Differentials, 1890 to 2005," NBER Working Paper No. 12984, 2007b.
- , *The Race between Education and Technology* (Cambridge, MA: Harvard University Press, 2008).
- Goos, Maarten, and Alan Manning, "Lousy and Lovely Jobs: The Rising Polarization of Work in Britain," *Review of Economics and Statistics*, 89 (2007), 118–133.
- Gordon, Robert J., and Ian Dew-Becker, "Selected Issues in the Rise of Income Inequality," *Brookings Papers on Economic Activity*, 2 (2007), 169–192.
- Gosling, Amanda, Stephen Machin, and Costas Meghir, "The Changing Distribution of Male Wages, 1966–1992," *Review of Economic Studies*, 67 (2000), 635–666.
- Herrlinger, Dagmar, Dana Müller, and Lutz Bellmann, "Codebuch zum IAB Betriebspanel. Version 1: Längsschnitt 1993–2001 (5. überarbeitete Auflage)," FDZ Datenreport Nr. 5 (2005).
- Juhn, Chinhui, Kevin M. Murphy, and Brooks Pierce, "Wage Inequality and the Rise in Returns to Skill," *Journal of Political Economy*, 101 (1993), 410–441.
- Katz, Lawrence F., and Kevin M. Murphy, "Changes in Relative Wages, 1963–1987: Supply and Demand Factors," *Quarterly Journal of Economics*, 107 (1992), 35–78.
- Kohn, Karsten, "Rising Wage Dispersion, After All! The German Wage Structure at the Turn of the Century," IZA Discussion Paper No. 2098, 2006.
- Krugman, Paul, "Past and Prospective Causes of Unemployment," *Economic Review, Federal Reserve Bank of Kansas City*, QIV (1994), 23–43.
- Lee, David S., "Wage Inequality in the United States in the 1980s: Rising Dispersion or Falling Minimum Wage?" *Quarterly Journal of Economics*, 114 (1999), 977–1023.
- Lemieux, Thomas, "Increasing Residual Wage Inequality: Composition Effects, Noisy Data, or Rising Demand for Skill?" *American Economic Review*, 96 (2006a), 1–64.
- , "Post-secondary Education and Increasing Wage Inequality," *American Economic Review Papers and Proceedings*, 96 (2006b), 1–23.

- , “The Changing Nature of Wage Inequality,” *Journal of Population Economics*, 21 (2008), 21–48.
- Levy, Frank, and Richard J. Murnane, “U.S. Earnings Levels and Earnings Inequality: A Review of Recent Trends and Proposed Explanations,” *Journal of Economic Literature*, 30 (1992), 1333–1381.
- Möller, Joachim, “Die Entwicklung der Lohnspreizung in West- und Ostdeutschland,” in *Institutionen, Löhne, und Beschäftigung*, Lutz Bellmann, Olaf Hübler, Wolfgang Meyer, and Gesine Stephan, eds. (Nürnberg: Beiträge zur Arbeitsmarkt- und Berufsforschung, 2005).
- Mulligan, Casey B., and Yona Rubinstein, “Selection, Investment, and Women’s Relative Wages over Time,” *Quarterly Journal of Economics*, 123 (2008), 1061–1110.
- Murphy, Kevin M., and Finis Welch, “The Structure of Wages,” *Quarterly Journal of Economics*, 107 (1992), 285–326.
- OECD, “Earnings Inequality, Low-Paid Employment and Earnings Mobility,” *OECD Employment Outlook* (1996), 59–107.
- Piketty, Thomas, and Emmanuel Saez, “Income Inequality in the United States, 1913–1998,” *Quarterly Journal of Economics*, 118 (2003), 1–39.
- Prasad, Eswar S., “The Unbearable Stability of the German Wage Structure: Evidence and Interpretation,” *IMF Staff Papers*, 51 (2004), 354–385.
- Saez, Emmanuel, and Michael R. Veall, “The Evolution of High Incomes in Northern America: Lessons from the Canadian Experience,” *American Economic Review*, 95 (2005), 831–849.
- Schnabel, Claus, and Joachim Wagner, “The Persistent Decline in Unionization in Western and Eastern Germany, 1980–2004: What Can We Learn from a Decomposition Analysis?” IZA Discussion Paper No. 2388, 2006.
- Spieß, Martin, and Markus Pannenberg, “Documentation of Sample Sizes and Panel Attrition in the German Socio Economic Panel (GSOEP),” *Research Notes*, 28 (2003), German Institute for Economic Research, Berlin.
- Spitz-Oener, Alexandra, “Technical Change, Job Tasks and Rising Educational Demands: Looking outside the Wage Structure,” *Journal of Labor Economics*, 24 (2006), 235–270.
- Steiner, Viktor, and Kersten Wagner, “Has Earnings Inequality in Germany Changed in the 1980s?” *Zeitschrift für Wirtschafts- und Sozialwissenschaften*, 118 (1998), 29–59.