

# Journal of Biomedical Optics

[SPIDigitalLibrary.org/jbo](http://SPIDigitalLibrary.org/jbo)

## **Feasibility of multiphoton microscopy-based quantification of antibiotic uptake into neutrophil granulocytes**

Adnan Mahmood  
Jeffrey E. Grice  
Michael S. Roberts  
Tarl W. Prow



# Feasibility of multiphoton microscopy-based quantification of antibiotic uptake into neutrophil granulocytes

Adnan Mahmood,<sup>a,b</sup> Jeffrey E. Grice,<sup>a</sup> Michael S. Roberts,<sup>a</sup> and Tarl W. Prow<sup>c</sup>

<sup>a</sup>University of Queensland, Therapeutics Research Centre, 37 Kent Street, Woolloongabba Queensland 4102, Australia

<sup>b</sup>Technical Institute of Baqubah, Foundation of the Technical Education, Althareer District, Baqubah, Diyala, Iraq

<sup>c</sup>University of Queensland, Dermatology Research Centre, 37 Kent Street, Woolloongabba Queensland 4102, Australia

**Abstract.** Antibiotic levels in livestock are usually evaluated through destructive analysis. Taking advantage of the fluorescent properties of marbofloxacin (MBX) and trovafloxacin (TVX), multiphoton microscopy (MPM) was evaluated as a minimally invasive and nondestructive method to determine the penetration of TVX and MBX into sheep neutrophils. Standard curves were measured with drug-only solutions and suggested that MBX was more suited for this type of analysis. The intracellular concentration of both TVX and MBX was higher than the extracellular concentration after incubating neutrophils for 30 min at concentrations ranging from 0.1 to 100  $\mu\text{g/ml}$  for both the drugs. The intracellular concentration of TVX increased with the extracellular concentration but was always greater than the extracellular concentration, suggesting active internalization. On the other hand, intracellular/extracellular ratio (I/E) peaked at 1.6-fold I/E for 1  $\mu\text{g/ml}$  and then gradually decreased with increased concentration to 1.2-fold I/E at 100  $\mu\text{g/ml}$ . For the first time, this study showed the use of MPM to quantify antibiotic uptake by sheep neutrophils and observed that both antibiotics were taken up by sheep neutrophils beyond extracellular levels. © The Authors. Published by SPIE under a Creative Commons Attribution 3.0 Unported License. Distribution or reproduction of this work in whole or in part requires full attribution of the original publication, including its DOI. [DOI: [10.1117/1.JBO.18.7.076003](https://doi.org/10.1117/1.JBO.18.7.076003)]

Keywords: multiphoton microscopy; antibiotics; neutrophils; image analysis.

Paper 12816RR received Dec. 21, 2012; revised manuscript received May 31, 2013; accepted for publication Jun. 3, 2013; published online Jul. 3, 2013.

## 1 Introduction

Multiphoton microscopy (MPM) is a proven technology with applications beyond subjective imaging. Some of the benefits of this unique form of nonlinear imaging include high resolution clinical and veterinary imaging with improved contrast of autofluorescent materials when compared to single-photon confocal microscopy (SPM) or nonconfocal fluorescence microscopy. MPM has the highest resolution of any noninvasive clinical imaging technology. One of the limitations to this approach is the significant cost of equipment, upkeep and training time. These limitations are fading away with improvements in solid state lasers and increased focus on user interfaces. The key difference between single photon microscopy and MPM is that MPM utilizes femtosecond pulsed laser light to excite fluorescent molecules. There are a wide range of applications for MPM that are based on autofluorescence [biological molecules like NAD(P)H, FAD and certain drugs], second harmonic generation (e.g., collagen), and multiphoton-enhanced photoluminescence (e.g., metal nanoparticles). For recent reviews, see König et al.<sup>1</sup> and Prow et al.<sup>2</sup>

Sheep are of great economic value and considered very important animal food sources, particularly in countries where certain diseases that may require an antibiotic treatment are endemic. Some of these diseases are caused by intracellular bacteria

such as Salmonellosis, Brucellosis, and Campylobacteriosis. Penetration of antibiotics into various host cells, especially immune cells, is very important to their effectiveness against various microbes, particularly intracellular bacteria. Penicillins, cephalosporins, and aminoglycosides enter cells very poorly and for that reason, they are inactive against intracellular bacteria although they are highly effective antibiotics.<sup>3</sup> In order to be active intracellularly, an antibiotic needs to be in direct contact with bacteria which mostly exist in the phagosome of the phagocytic cell.<sup>4</sup>

We foresee MPM being used more broadly as a noninvasive means to evaluate the presence or absence of autofluorescent molecules of interest in a variety of settings. One area that has yet to be explored is the analysis of autofluorescent antibiotics. Our hypothesis was that MPM could be used to quantify the levels of two important antibiotics, trovafloxacin (TVX) and marbofloxacin (MBX). The reported maximal excitation and emission wavelengths for fluoroquinolones vary but are largely agreed to have two excitation bands at 300 to 350 nm and 245 to 290 nm; the emission band is also broad at 440 to >550 nm.<sup>5</sup> We are the first to explore the use of MPM to evaluate the feasibility of using MPM as a tool to examine TVX and MBX concentrations in sheep neutrophils. As a consequence, we have also gained knowledge into the pharmacokinetics of these important antibiotics in living neutrophils. To our knowledge, this is the first report describing the use of MPM to monitor autofluorescent antibiotic levels.

The mechanism of quinolone penetration into cells is not well defined. Using a radioisotopic technique in human neutrophils, Vazifeh et al. postulated that intracellular accumulation

Address all correspondence to: Tarl W. Prow, University of Queensland, Dermatology Research Centre, 37 Kent Street, Woolloongabba Queensland 4102, Australia. Tel: +61 7 3443 8019; Fax: +61 7 3443 7779; E-mail: [tprow@uq.edu.au](mailto:tprow@uq.edu.au)

of levofloxacin occurred by a solely passive process.<sup>6</sup> On the other hand, Mémin et al. reported that pefloxacin was actively transported at 42°C in *in vitro* study.<sup>7</sup> It may be that quinolones can penetrate into cells passively in normal physical conditions, while some may be actively transported when the temperature or pH is modified.<sup>7</sup>

TVX is able to concentrate inside phagocytic and nonphagocytic cells, attaining concentrations numerous times greater than those seen extracellularly. A study using radiolabeled TVX, with human polymorphonuclear leukocytes (PMNs) and human peritoneal macrophages, demonstrated that TVX at therapeutic extracellular concentrations reached intracellular concentrations in PMNs of 10-fold or more greater than extracellular levels.<sup>8</sup> These rates were a little higher than those obtained with ofloxacin, lomefloxacin, and sparfloxacin, possibly because the greater hydrophobicity of TVX allowed it to cross the cell membrane more easily. Interestingly, TVX remained intracellularly active in PMNs, and its uptake by the same cells was markedly augmented at 4°C regardless of cell viability. On the other hand, van den Broek et al. found that TVX exhibited concentration-independent activity against *Staphylococcus aureus* that was lower in human granulocytes or monocytes than in a cell-free medium.<sup>9</sup> However, Facinelli et al. confirmed that TVX was highly active against all tested *Listeria monocytogenes* strains and was more intracellularly active than sparfloxacin, ciprofloxacin, and ofloxacin.<sup>10</sup>

There is limited information about the infiltration of veterinary quinolones into cells. One report stated that enrofloxacin was accumulated in canine white blood cells (WBCs) and alveolar macrophages (AMs) to concentrations greater than 10 times the minimum inhibitory concentration (MIC) for many susceptible pathogens.<sup>11</sup> Another study found that MBX reached a concentration in the AMs greater than those seen in plasma and epithelial lining fluid after oral administration in dogs.<sup>12</sup> MBX accumulated in AMs at concentrations higher than the mean MICs of major bacterial diseases in dogs, making it suitable for a treatment of intracellular pathogens or infectious diseases associated with pulmonary macrophage penetration. Previous studies reported that TVX and MBX are autofluorescence antibiotics.<sup>13,14</sup> In this study, we investigated, for the first time, the penetration of TVX and MBX into isolated sheep neutrophils using MPM.

## 2 Materials and Methods

### 2.1 Antibiotics and Sheep Blood Samples

All procedures were approved by the Production and Companion Animal Ethics committee at UQ (PAH/MTCOTT/381/09). MBX and TVX as trovafloxacinmesylate were kindly supplied as a pure material by the Pfizer Inc. (Eastern Point Road, Groton, Connecticut 06340). Aqueous solutions of each drug were prepared initially and adjusted to required concentrations.

Sheep were held at Mount Cotton Farm (Karreman Group, Mount Cotton, Queensland, Australia). Blood samples were collected from six sheep (10 ml each) in 5 ml lithium heparin tubes (Vacuette, Interpath Services Pty Ltd, Heidelberg West, VIC Australia, Greiner Bio One, Kremsegg, Austria), using 20G needles and VacutainersHolde (Becton Dickinson Pty. Ltd., North Ryde, NSW Australia). Blood was transferred at room temperature into the lab for neutrophil isolation.

### 2.1.1 Neutrophil isolation

Neutrophil isolation was performed following a modified procedure from previously reported protocols.<sup>15,16</sup> Ten milliliters of blood was diluted with an equal volume of 0.9% NaCl at room temperature. Twenty milliliters of diluted blood was slowly and carefully overlaid onto 5 ml of Ficoll-Hypaque (GE Healthcare, Sydney, NSW Australia) gradient separation media with the pipette tip close to the surface of the media to avoid mixing the blood and the media. The blood was then centrifuged at 500 relative centrifugal force (RCF) for 35 min at 20°C. The top three layers (plasma, monocytes, and isolation media) were carefully removed and disposed of. Neutrophils and all of the isolation media beneath the neutrophils were then carefully aspirated and placed into clean centrifuge tubes. The neutrophil solution was diluted with an equal volume of RPMI media (RPMI 1640, PAA laboratories GmbH, Austria) and inverted few times to suspend the cells. The solution was then centrifuged at 350 RCF for 10 min to obtain the red pellet at the bottom of the tube containing neutrophils and residual red blood cells (RBCs). The supernatant solution was removed carefully with a pipette. To lyse the residual RBCs, 10 ml of sterile water was added into each 10 ml volume of solution and mixed by gently inverting the tubes for 20 s at room temperature. Immediately, 10 ml of 9% NaCl solution were added and mixed well by gently inverting the tubes. The tubes were then centrifuged at 250 RCF for 5 min and the supernatant solution was aspirated and discarded. The RPMI media (1 ml) was added to the centrifuged solution and vortexed to resuspend the pellet and then the mixture was diluted with 10 ml RPMI media. The centrifugation step was repeated and 0.25 ml of RPMI was added. The pellet was resuspended and neutrophil count was adjusted to 5000 cells/ml.

### 2.2 Incubation of Neutrophils with Antibiotics

In this study, neutrophils were incubated in RPMI containing different concentrations of either TVX or MBX (0, 0.1, 1, 10, and 100 µg/ml) at 37°C for 30 min as previously suggested.<sup>8</sup> After incubation of neutrophils with the drugs, samples were processed for MPM imaging.

### 2.3 Multiphoton Microscopy

The neutrophil containing solution (15 µl) was placed on a slide with a coverslip. Four slides were prepared from each concentration and two images were taken per each slide. All multiphoton images were obtained on a DermaInspect system (JenLab GmbH, Jena, Germany) with an ultrashort pulsed modelocked, 80 MHz, Titanium Sapphire MaiTai laser (Spectra Physics, Mountain View, California), which has a tuning range of 710 to 920 nm and an 85 fs pulse width. The tomography system has an integrated TCSPC 830 detector to enable FLIM measurements. A Zeiss Plan-Neofluor oil-immersion 40 × /1.30 objective was used. The excitation wavelength was 740 nm for both compounds, and the average incident optical power was 21 mW at the rear of the objective. Images were taken with a brightness of 540 and a contrast of 950. A band pass filter (Schott BG39) was used to filter the light ahead of the FLIM detectors. This detector contained an array of four fast-response time-correlated single-photon counting detectors to capture single-photon events for later image exporting with SPCImage software.

## 2.4 Single-Photon Microscopy

The antibiotic-containing solutions were placed on a slide and imaged with a single-photon Zeiss META 510 confocal microscope. A 405-nm laser was used to excite the sample at 10% power using a 0.3 NA 10× EC Plan-Neofluar objective. This wavelength was chosen as the closest comparison to the 740-nm pulsed excitation source described in the MPM method above. A 508- to 625-nm band pass filter was used to collect similar wavelength light as described in the MPM parameters.

## 2.5 Analysis of Gray Scale Tiff Images

All images were analyzed using IMAGEJ 1.43 software to obtain mean gray values (MGV). Tiff images of channels 1 [350 to 450 nm, NAD(P)H] and 3 (515 to 620 nm, quinolones) were exported. The NAD(P)H signal was used to identify a neutrophil and create an outline of that cell. This same outline was then applied to the antibiotic channel for cellular measurements. Twenty neutrophils on average were detected for each concentration from either MBX or TVX solutions using MPM. In the SPM standard curve experiment, five areas ( $100 \times 100 \mu\text{m}^2$ ) were analyzed per concentration group. The extracellular concentration measurement was made in a location without neutrophils, with a uniform area of interest using only MPM.

## 2.6 XY-Plane Perpendicular to the Optical Axes

In order to assure that the images were taken in the center of the *xy*-plane perpendicular to the optical axes where the MBX or TVX water solution was contained, we used  $10.2 \mu\text{m}$  fluorescence Nile Red beads (Spherotech Inc. Lake Forest, IL). The beads were present in the same *xy*-plane as the MBX or TVX solutions validating the imaging depth. The resulting images were processed as described above, except the beads were excluded from the regions of interest analyzed.

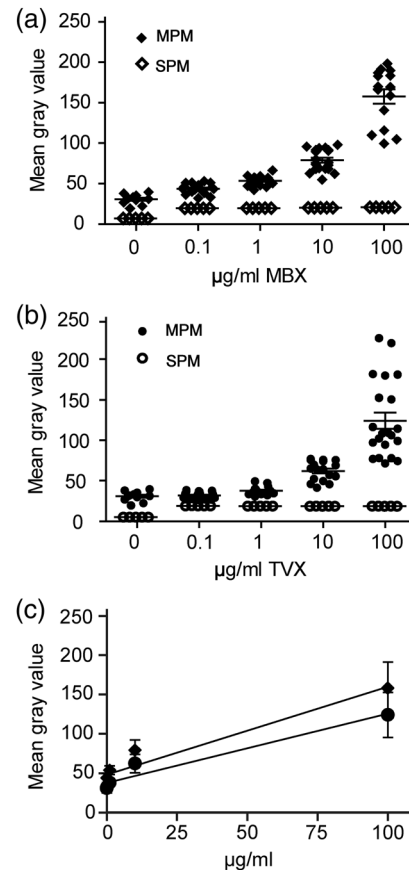
## 2.7 Statistical Analysis

All data were analyzed and graphed in GraphPad Prism 5.0.1 (GraphPad Prism Software Inc.) or Microsoft Excel. The significance of variance within an entire group was determined by one-way analysis of variance (ANOVA) and between groups by two-way ANOVA.<sup>17</sup> The statistical significance was at  $p < 0.05$ .

## 3 Results

### 3.1 Standard Curve Generation

Solutions of MBX and TVX were prepared in sterile water at 0.0, 0.1, 1.0, 10.0, and 100.0  $\mu\text{g}/\text{ml}$ . A 2-mm o-ring was used to contain the solutions below the coverslip while imaging and the solutions were prepared with fluorescent beads to assure that the correct *xy*-plane was imaged for the standard curve. Figure 1 shows the image analysis results for the standard curve generation using either SPM or MPM. The resulting standard curve ranges were linear for both MBX and TVX with  $R^2$  of 0.928 and 0.946 when fit with a linear equation, respectively, using MPM but not SPM. The slopes of the fit lines showed that MBX [ $1.12 \text{ MG}/(\mu\text{g}/\text{ml})$ ] were slightly more suitable for MPM quantification within the range chosen

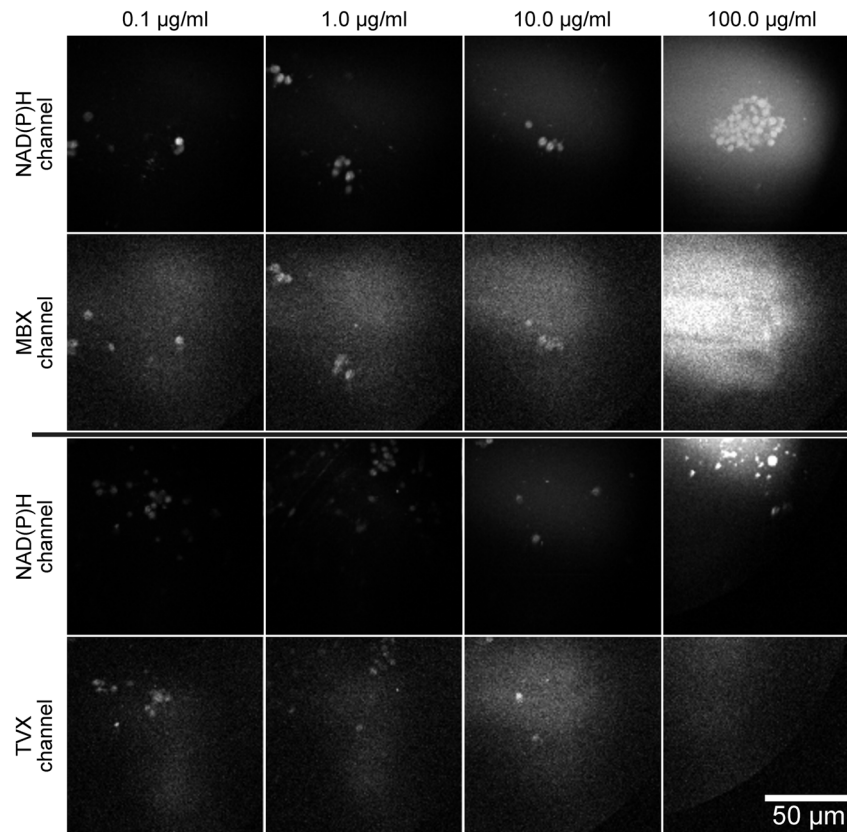


**Fig. 1** Marbofloxacin (MBX) and trovafloxacin (TVX) solution-only standard curve raw data and linear regression line fit using multiphoton microscopy (MPM) (closed symbols), but not single-photon microscopy (SPM) (open symbols). MBX is shown in filled diamonds and TVX in closed circles. Panel c shows the linear regression line fits for both MBX ( $y = 1.12x + 48.19$ ,  $R^2 = 0.928$ ) and TVX ( $y = 0.88x + 37.76$ ,  $R^2 = 0.946$ ). The error bars show standard error.

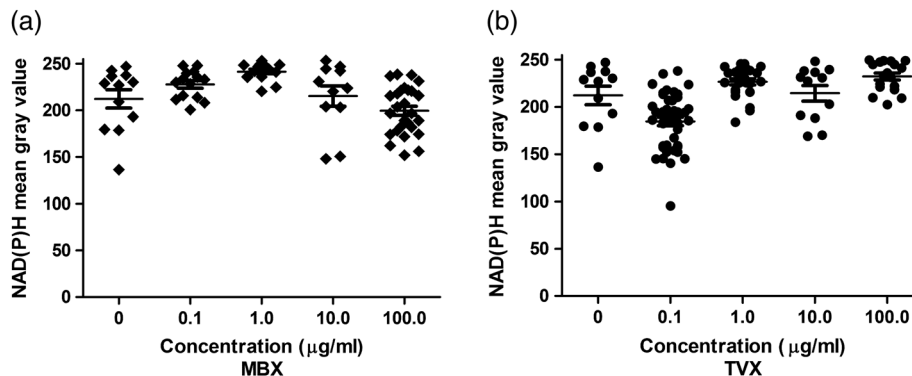
than TVX [ $0.88 \text{ MG}/(\mu\text{g}/\text{ml})$ ]. Nevertheless, both had positive slopes and linear profiles within the chosen range of 0.1 to 100.0  $\mu\text{g}/\text{ml}$ .

### 3.2 Neutrophil Imaging

Solutions containing freshly isolated neutrophils were treated for 30 min with MBX and TBX at concentrations between 0.0 and 100.0  $\mu\text{g}/\text{ml}$ . MPM images were taken with emission filters at 350 to 450 nm and 510 to 615 nm for NAD(P)H and antibiotics, respectively (Fig. 2). Neutrophils were sparse or in small aggregates that were easily visible by NAD(P)H imaging. The levels of NAD(P)H remained fairly constant indicating that the cells were metabolically viable and that the treatment regimens did not induce cell death<sup>18</sup> (Figs. 2 and 3). In Fig. 2, the two highest concentrations of antibiotics show signal bleed into the NAD(P)H channel. This is a common problem with high levels of fluorescent molecules and introduces an overestimation error in the NAD(P)H measurements in these groups. This is an inherent limitation in some fluorescence-based assays. No blebs or other signs of necrosis were visible. Together, these data indicate that the isolation, treatment, and imaging did not cause overt cytotoxicity.



**Fig. 2** Gray scale images of neutrophils after incubating in different concentrations of MBX and TVX. Both NAD(P)H and antibiotic channels are shown for comparison.



**Fig. 3** Mitochondrial function as indicated by NAD(P)H fluorescence for both MBX (a) and TVX (b) treated neutrophils. The error bars show standard error.

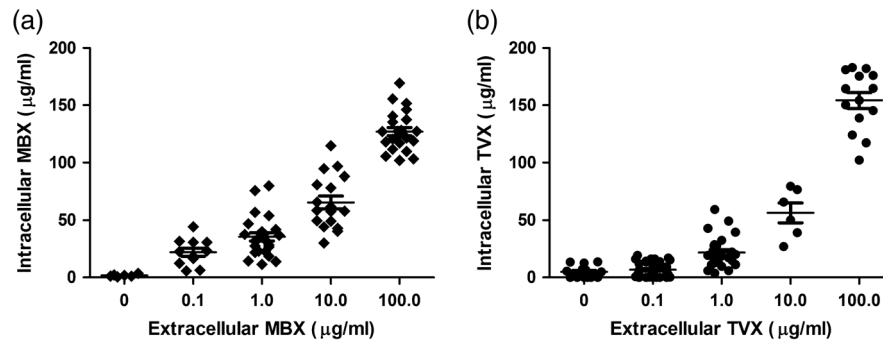
### 3.3 Intra- and Extracellular Antibiotic Levels

Image analysis revealed that both antibiotics were more concentrated inside neutrophils than the extracellular media. Figure 4(a) and 4(b) shows the intracellular and extracellular mean gray values for MBX and TVX over the range of concentrations examined. It is apparent from the data shown in Fig. 4 that MBX and TVX are internalized at different rates, which are directly relevant for kinetics studies.

## 4 Discussion

MPM provides a nondestructive means of analysis for molecules or materials with fluorescent properties in complex media.<sup>2</sup>

Noninvasive antibiotic quantification *in vivo* would be valuable for livestock. That said, bringing a multiphoton microscope to a farm may be practically challenging. However, one can hypothesize that a small instrument with a solid state pulsed laser and photodiode detectors could be developed for such a purpose if there were a supporting need. This report describes a feasibility study designed to evaluate the potential for MPM-based antibiotic analysis in WBCs. We carried out a direct measurement of the media fluorescence versus the intracellular fluorescence to gauge the propensity for the cells to uptake TVX and MBX. We found that MBX and TVX treatments were associated with increased levels of intracellular fluorescence above extracellular levels, in a dose-dependent manner. These data support the



**Fig. 4** Intracellular concentrations of MBX and TVX with treatment concentrations from 0 to 100  $\mu\text{g/ml}$ . The bottom panel shows the intracellular concentration/extracellular concentration ratio. The error bars show standard error.

hypothesis that MPM may be useful for the estimation of fluorescent quinolone levels in neutrophils. However, additional studies need to be done to confirm this hypothesis.

In 1999, Vazifeh et al. investigated the uptake of levofloxacin into human neutrophils. Cells were incubated with 10  $\mu\text{g/ml}$  levofloxacin at 42°C for 5 to 180 min. Our experiments differed in that we incubated at 37°C and for only 30 min. Both studies evaluated the same concentration. Vazifeh et al. found that levofloxacin treatment resulted in a cellular concentration/extracellular concentration ratio of 4 to 6. This is in contrast to our observation. With the same treatment concentration (i.e., 10  $\mu\text{g/ml}$ ), we found the ratios of 38 and 29. There are several reasons why these differences exist. The model systems and drugs are different but not so divergent as to explain these differences. The major differences are the treatment time and, of course, the methodologies. The levofloxacin data were gathered at 5-min treatment, whereas our TVX and MBX treatment time was 30 min. Further, Vazifeh et al. showed a time-dependent increase in the ratio but did not report values at 30 min. We suggest that all of these variables contribute to these differences and that the methodology is likely the most significant factor. Vazifeh et al. utilized radiolabeled levofloxacin and we used unmodified TVX and MBX. The radiolabeled approach is likely to be far more sensitive and accurate when compared to a microscopy-based technique. Hypothetically, cellular changes induced by treatment could contribute to increased levels of intracellular fluorescence signals. There is, however, precedent for TVX to accumulate to higher intracellular levels than levofloxacin.

Pascual et al. reported a cellular to intracellular concentration ratio of TVX-treated human neutrophils to be  $>10$  at 30 min with 2  $\mu\text{g/ml}$ . Again, a radiolabeled drug was used to acquire these results. Fluoroquinolones utilize several different transporter systems to enter cells.<sup>7</sup> Ofloxacin has been shown to use aminoacid transporters to gain entry into neutrophils, whereas anion transporters are implicated in norfloxacin transport. Unfortunately, the mechanism for TVX and MBX is not known. However, we foresee that the experimentation to unravel this gap in the literature could be aided by MPM analysis. MPM has the potential to enable real-time assessment before, during, and after transport modulator treatment for the collection on kinetic data.

In summary, while there are many unknowns regarding MPM assessment for antibiotic levels in live cells or even *in vivo*, our data show that there is potential for this approach to be further developed into an effective research tool. Our data showed similar trends to that from radiolabeled drug generated studies, however, our data appeared to overestimate

the amount of intracellular drug. Further studies are needed to refine this approach and determine if *in vivo* application is pragmatic.

#### Acknowledgments

The authors would like to thank the Dermatology Research Centre for assistance with imaging.

#### References

1. K. König et al., "Applications of multiphotontomographs and femto-second laser nanoprocessing microscopes in drug delivery research," *Adv. Drug Deliv. Rev.* **63**(4–5), 388–404 (2011).
2. T. W. Prow, "Multiphoton microscopy applications in nanodermatology," *Wiley Interdiscip. Rev. Nanomed. Nanobiotechnol.* **4**(6), 680–690 (2012).
3. J. J. Pocidalo, "Use of fluoroquinolones for intracellular pathogens," *Rev. Infect. Dis.* **11**, S979–S984 (1989).
4. H. A. Nguyen et al., "Factors influencing the intracellular activity of fluoroquinolones: a study using levofloxacin in a *Staphylococcus aureus* THP-1 monocyte model," *J. Antimicrob. Chemother.* **57**(5), 883–890 (2006).
5. F. Canada-Canada et al., "Second-order multivariate calibration procedures applied to high-performance liquid chromatography coupled to fast-scanning fluorescence detection for the determination of fluoroquinolones," *J. Chromatogr. A* **1216**(24), 4868–4876 (2009).
6. D. Vazifeh, A. Bryskier, and M.-T. Labro, "Mechanism underlying levofloxacin uptake by human polymorphonuclearneutrophils," *Antimicrob. Agents Chemother.* **43**(2), 246–252 (1999).
7. E. Memin, G. Panteix, and A. Revol, "Carrier-mediated system for pefloxacin uptake in human monocytes," *J. Antimicrob. Chemother.* **40**(2), 263–268 (1997).
8. A. Pascual et al., "Uptake and intracellular activity of trovafloxacin in human phagocytes and tissue-cultured epithelial cells," *Antimicrob. Agents Chemother.* **41**(2), 274–277 (1997).
9. P. J. van den Broek et al., "Intracellular activity of trovafloxacin against *Staphylococcus aureus*," *J. Antimicrob. Chemother.* **44**(2), 193–199 (1999).
10. B. Facinelli et al., "*In vitro* extracellular and intracellular activity of two newer and two earlier fluoroquinolones against *Listeria monocytogenes*," *Eur. J. Clin. Microbiol. Infect. Dis.* **16**(11), 827–833 (1997).
11. Hawkins et al., "Concentration of enrofloxacin and its active metabolite in alveolar macrophages and pulmonary epithelial lining fluid of dogs," *J. Vet. Pharmacol. Ther.* **21**(1), 18–23 (1998).
12. H. W. Boothe et al., "Evaluation of the concentration of marbofloxacin in alveolar macrophages and pulmonary epithelial lining fluid after administration in dogs," *Am. J. Vet. Res.* **66**(10), 1770–1774 (2005).

13. J. L. Vilchez, J. Taoufiki, and A. Navalon, "Determination of the antibacterial drug trovafloxacin by solid-phase spectrofluorimetry," *Anal. Lett.* **35**(2), 257–268 (2002).
14. M. A. Garcia et al., "Determination of marbofloxacin in plasma samples by high-performance liquid chromatography using fluorescence detection," *J. Chromatogr. B Biomed. Sci. Appl.* **729**(1–2), 157–161 (1999).
15. H. Oh, B. Siano, and S. Diamond, "Neutrophil isolation protocol," *J. Vis. Exp.* **17**, e745 (2008).
16. D. W. Siemsen et al., *Neutrophil Isolation From Nonhuman Species Neutrophil Methods and Protocols*, M. T. Quinn, F. R. DeLeo, and G. M. Bokoch, Eds., pp. 21–34, Humana Press, Totowa, NJ (2007).
17. D. S. Moore, G. P. McCabe, and B. A. Craig, *Introduction to the Practice of Statistics*, W.H. Freeman, New York (2009).
18. W. Y. Sanchez et al., "Analysis of the metabolic deterioration of ex vivo skin from ischemic necrosis through the imaging of intracellular NAD(P)H by multiphoton tomography and fluorescence lifetime imaging microscopy," *J. Biomed. Opt.* **15**(4), 046008–046008 (2010).