

# Retardation of atherosclerosis in immunocompetent apolipoprotein (apo) E-deficient mice following liver-directed administration of a [E1<sup>-</sup>, E3<sup>-</sup>, polymerase<sup>-</sup>] adenovirus vector containing the elongation factor-1 promoter driving expression of human apoE cDNA

## Research Article

Julian D. Harris<sup>1</sup>, Ian R. Graham<sup>1</sup>, Silke Schepelmann<sup>2</sup>, Anita K. Stannard<sup>2</sup>, Andrea Amalfitano<sup>3</sup>, James S. Owen<sup>2</sup>, George Dickson<sup>1,\*</sup>

<sup>1</sup> School of Biological Sciences, Royal Holloway University of London, Egham, UK

<sup>2</sup> Department of Medicine, Royal Free & University College Medical School, London, UK

<sup>3</sup> Department of Paediatrics, Duke University Medical Centre, Durham, USA

\*Correspondence: George Dickson, PhD, School of Biological Sciences, Royal Holloway University of London, Egham, UK. Telephone: +44-1784-443545; fax: +44-1784-434326; e-mail: [g.dickson@rhul.ac.uk](mailto:g.dickson@rhul.ac.uk)

**Key words:** Atherosclerosis; apolipoprotein E; gene therapy; adenovirus

**Abbreviations:** Apolipoprotein E, (apoE); ATP-binding cassette transporter A1, (ABCA1); cytomegalovirus, (CMV); elongation factor 1 $\alpha$ , (EF-1 $\alpha$ ); fetal calf serum, (FCS); high-density lipoprotein, (HDL); human  $\alpha$ -1-antitrypsin, (hAAT); human factor IX, (hFIX); intermediate-density lipoprotein, (IDL); inverted terminal repeats, (ITRs); low-density lipoprotein, (LDL); LDL-receptor, (LDLR); LDLR-related protein, (LRP); chloramphenicol acetyltransferase, (CAT); multiplicity of infections, (MOIs); protein IX, (pIX); recombinant adeno-associated virus, (rAAV); recombinant adenoviral vectors, (rAd); Rouse sarcoma virus, (RSV); scavenger receptor-B1, (SR-B1); very-low-density lipoprotein, (VLDL); virus particles, (vp)

Received: 8 February 2005; Revised: 24 February 2005

Accepted: 2 March 2005; electronically published: March 2005

## Summary

Although gene transfer of human apolipoprotein E (apoE), a 34-kDa circulating glycoprotein, to the liver of apoE-deficient (apoE<sup>-/-</sup>) mice using recombinant adenoviral vectors (rAd) is antiatherogenic, its full therapeutic potential has yet to be realized. First generation vectors led to immune clearance of transduced hepatocytes, while an improved vector with adenovirus regions E1, E3 and DNA polymerase deleted also had transient effects due to cellular shutdown of the cytomegalovirus (CMV) promoter. Here, we have studied an alternative promoter from the cellular elongation factor 1 $\alpha$  (EF-1 $\alpha$ ) gene, injecting 6-8 week old apoE<sup>-/-</sup> mice intravenously with 2x10<sup>10</sup> virus particles (vp) of the [E1<sup>-</sup>, E3<sup>-</sup>, polymerase<sup>-</sup>] rAd vector Ad-EF1 $\alpha$ -apoE. Plasma apoE levels were low (18-55 ng/ml) and failed to reduce plasma cholesterol or normalize the adverse lipoprotein profile. By contrast, the hyperlipidaemic phenotype of apoE<sup>-/-</sup> mice treated with Ad-CMV-apoE (2x10<sup>10</sup> vp) was transiently normalized. Nevertheless, at termination (265 days) the aortic lesion areas in animals given Ad-EF1 $\alpha$ -apoE were significantly reduced by 15% ( $P<0.05$ ) compared to untreated animals, a decrease approaching that in Ad-CMV-apoE-treated mice (23%;  $P<0.02$ ). Importantly, the attenuation of apoE transgene expression noted with the CMV promoter was absent with the EF-1 $\alpha$  promoter, which gave relatively sustained, albeit low, levels of plasma apoE throughout the study period.

## I. Introduction

Apolipoprotein E (apoE) is a 34-kDa glycoprotein which plays a major role in plasma cholesterol homeostasis and in protection against the development of atherosclerosis. It is an important constituent of atherogenic remnant lipoprotein particles, mediating their hepatic clearance through interaction with the LDL-receptor (LDLR) and LDLR-related protein (LRP) (Mahley and Rall, 2000). Additionally, apoE is involved in reverse cholesterol transport, where excess cholesterol is removed from arterial and other peripheral tissues and transported to the liver for excretion (Fielding and Fielding et al, 1995; Mahley and Rall, 2000).

The apoE-deficient (apoE<sup>-/-</sup>) mouse has severe hypercholesterolaemia and spontaneously develops atherosclerotic lesions (Piedrahita et al, 1992; Nakashima et al, 1994). First generation recombinant adenovirus (rAd) vectors were successful in liver-directed apoE gene transfer, transiently normalizing plasma cholesterol levels in apoE<sup>-/-</sup> mice and protecting against atherosclerosis (Kashyap et al, 1995; Stevenson et al, 1995). However, such rAds led to an immune response against the adenovirus-transduced hepatocytes, causing rapid loss of transgene expression (Yang et al, 1996). Improvements in rAd vector design, including removal of certain sequences in the vector genome, reduced hepatotoxicity and allowed longer apoE transgene expression (Tsukamoto et al, 1997, 1999; Harris et al, 2002a). This work included our own study on intravenous (liver-directed) injections of a [E1<sup>-</sup>, E3<sup>-</sup>, polymerase<sup>-</sup>] rAd vector containing the cytomegalovirus (CMV) promoter driving expression of human apoE. We reported retardation of early aortic lesions and acute regression of advanced atheroma in apoE<sup>-/-</sup> mice with normalization of the hyperlipidaemic phenotype (Harris et al, 2002a). However, the apoE transgene expression remained transient, as reflected in a rebound of the plasma cholesterol concentration and the re-accumulation of atherogenic remnant lipoprotein particles to pretreatment levels. This effect was shown to arise from CMV promoter shutdown, a recognized feature of transgene expression when driven by virus-derived promoters such as the CMV or Rouse sarcoma virus (RSV) promoters, particularly in the liver (Kay et al, 1992; Guo et al, 1996; Loser et al, 1998; Qin et al, 1997).

Therefore, in the current study we have constructed an [E1<sup>-</sup>, E3<sup>-</sup>, polymerase<sup>-</sup>] rAd vector, containing the promoter for cellular elongation factor 1 (EF-1), a widely expressed eukaryotic protein involved in regulation of multiple cellular processes, to drive expression of apoE. ApoE<sup>-/-</sup> mice (6-8 weeks old) were injected intravenously with Ad-EF1 -apoE to assess its effect on hyperlipidaemia and atherosclerotic lesion progression. Although expression of apoE was low, the attenuation noted with the CMV promoter appeared absent. Importantly, at termination (265 days) treated mice demonstrated significant retardation of atherosclerosis (15%,  $P < 0.05$ ), compared to untreated endpoint control animals, despite unchanged plasma cholesterol or lipoprotein profile.

## II. Materials and methods

### A. Recombinant adenovirus construction

Construction of pShuttle-EF1 -pA has been described (Ding et al, 2002). To construct the shuttle plasmid pShuttle-EF1 -apoE-pA, human apoE3 cDNA was excised from pUC18-apoE3 (Breslow et al, 1982) by digestion with *Hind*III and *Bam*H1, then ligated into *Hind*III-*Bam*H1-digested pcDNA3. The *Hind*III and *Xho*I subfragment of pcDNA3-apoE containing the human apoE3 cDNA was subcloned into the *Hind*III and *Sal*I sites of pShuttle-EF1 -pA to yield pShuttle-EF1 -apoE-pA. Construction of pShuttle-CMV-apoE-pA and the procedure for generating the [E1<sup>-</sup>, E3<sup>-</sup>, polymerase<sup>-</sup>] rAd vectors (Ad-CMV-apoE and Ad-EF1 -apoE; **Figure 1A**) have been described (Harris et al, 2002a).

### B. Ad-EF1 -apoE infection of cultured HepG2 and C2C12 cells

The human hepatic carcinoma and murine myoblast cell lines, HepG2 and C2C12 respectively, were cultured and transduced with rAd vectors as previously described (Harris et al, 2002a). Briefly, cells were seeded into 6-well plates and the following day the near-confluent monolayers were infected with the same dilutions of Ad-EF1 -apoE at the multiplicity of infections (MOIs) indicated in **Figure 1B**. The next day culture medium was changed to include 5% fetal calf serum (FCS) and, after overnight incubation, the medium was harvested and analysed by Western blotting for secreted apoE (Harris et al, 2002a).

### C. Intravenous administration of rAd vectors

Female C57BL/6 apoE<sup>-/-</sup> mice (Piedrahita et al, 1992) were provided by GlaxoSmithKline (Stevenage, UK) and were maintained on a normal chow diet. At age 6-8 weeks they were intravenously injected via the tail-vein with either Ad-EF1 -apoE (n = 6) or Ad-CMV-apoE (n = 7) at  $2 \times 10^{10}$  virus particles (vp) in 250  $\mu$ l, where the virus stock was diluted appropriately in diluent containing 10 mM Tris-HCl (pH 8.0), 2 mM MgCl<sub>2</sub> and 0.9% (w/v) NaCl; untreated animals were used as controls (n = 7). Blood (~50  $\mu$ l) was taken from the tail-vein following 4 h fasts at 5, 14, 28, 56, 132 and 265 days post-injection, anticoagulated with sodium citrate and the plasma stored at -80°C. The mice were killed at termination (265 days) to examine the effect of apoE gene transfer upon aortic atherosclerotic lesion progression. However, one Ad-CMV-apoE-treated animal died 7 days before this time point and so no analysis of the aorta was carried out.

### D. Quantification of plasma apoE and cholesterol and analysis of lipoprotein distribution

Levels of human apoE in mouse plasma were monitored by Western blotting and quantified by a two-antibody sandwich ELISA as described earlier (Harris et al, 2002a). Total cholesterol was measured in plasma diluted 1/10 in PBS (10  $\mu$ l) using a commercial enzymatic kit (Infinity™ cholesterol reagent, Sigma-Aldrich) and microtitre plates. Lipoprotein profiles were evaluated by electrophoresis of 10  $\mu$ l pooled plasma on pre-cast alkaline buffered (pH 8.8) 0.8% agarose gels (YSI, Farnborough, UK), followed by staining with Sudan black, as previously described (Harris et al, 2002a).

### E. Dissection and examination of the aortic arch for atherosclerotic lesions

The animals were killed 265 days after the injections and aortae were removed, pinned out *en face* onto cork beds and stained with Oil-Red-O. Images of the aortae were captured with a

Nikon digital camera and analysis of aortic lesion area from the aortic root of the heart down to the diaphragm was achieved using image analysis software Sigma Scan Pro5 (Harris et al, 2002a).

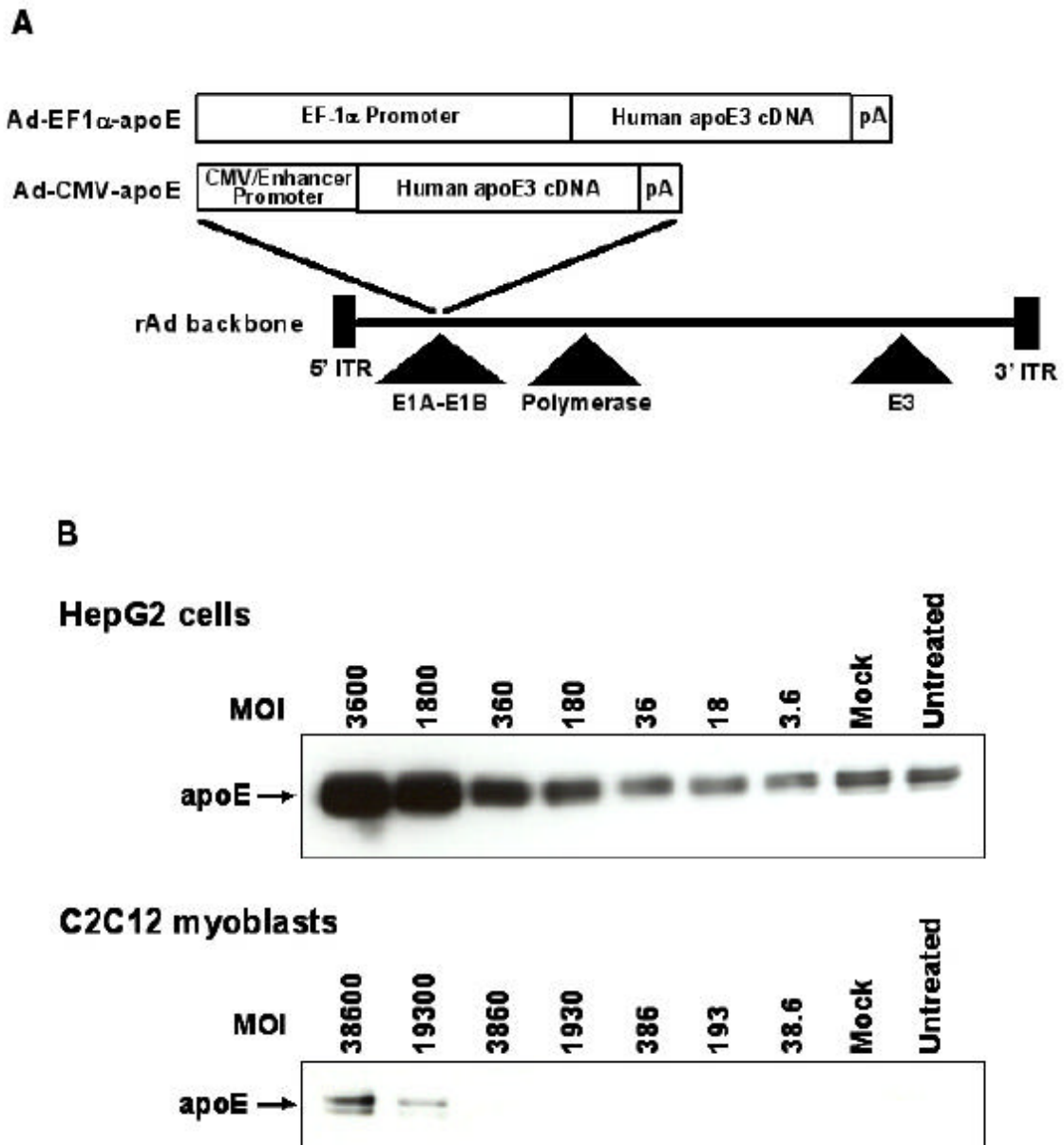
**F. Statistical analysis**

Student's unpaired *t*-test was used to compare plasma cholesterol levels and aortic lesion areas in mice treated with Ad-EF1 -apoE or Ad-CMV-apoE, against the untreated control group.

**III. Results**

**A. ApoE secretion by HepG2 and C2C12 cells transduced with Ad-EF1 -apoE**

The rAd vector, Ad-EF1 -apoE containing the cellular EF-1 promoter driving expression of human apoE cDNA, was used to engineer human HepG2 cells and mouse C2C12 myoblast cells to secrete apoE into the culture supernatant. A higher transduction efficiency was seen in HepG2 cells above endogenous levels of apoE compared to C2C12 cultures, most evident when near-equivalent virus particle MOIs were taken into account (**Figure 1B**). The mock-infected and untreated HepG2 cells show basal endogenous apoE secretion.



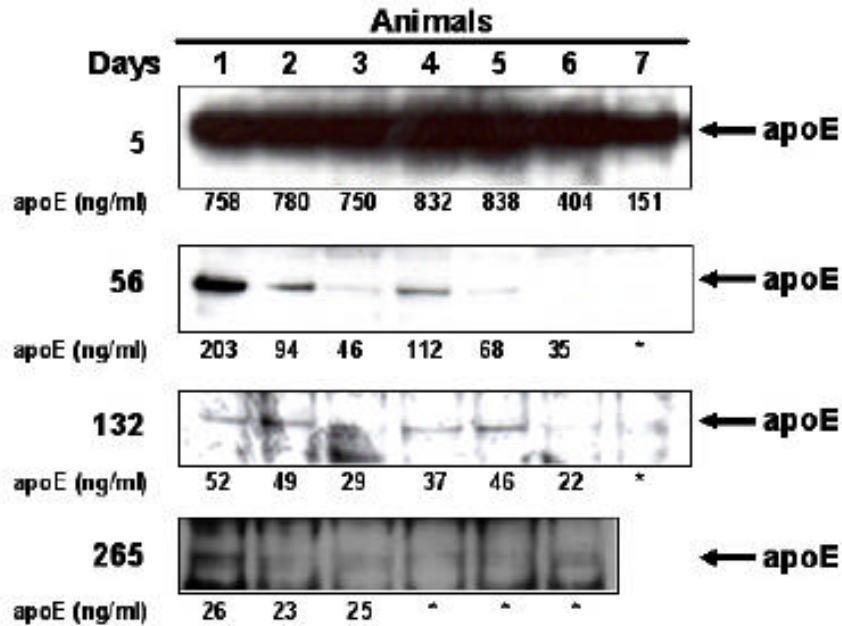
**Figure 1.** Structural details of the recombinant adenovirus vectors used and their ability to transduce cells *in vitro*. (A) Schematic representation of the [E1<sup>-</sup>, E3<sup>-</sup>, polymerase<sup>-</sup>] adenovirus vectors expressing human apoE. The transgene cassettes that replace the deleted E1-region, contained either the EF-1 promoter or the full CMV early enhancer/promoter driving expression of the human apoE3 cDNA, followed by a SV40 polyadenylation signal (pA). The solid triangles indicate the regions deleted in the recombinant adenovirus (rAd) backbone. (B) Secretion of recombinant human apoE (34-kDa) from HepG2 and C2C12 myoblast cultures after infection with Ad-EF1 -apoE.

### B. Secretion of human apoE into mouse plasma following intravenous injection of Ad-EF1 -apoE

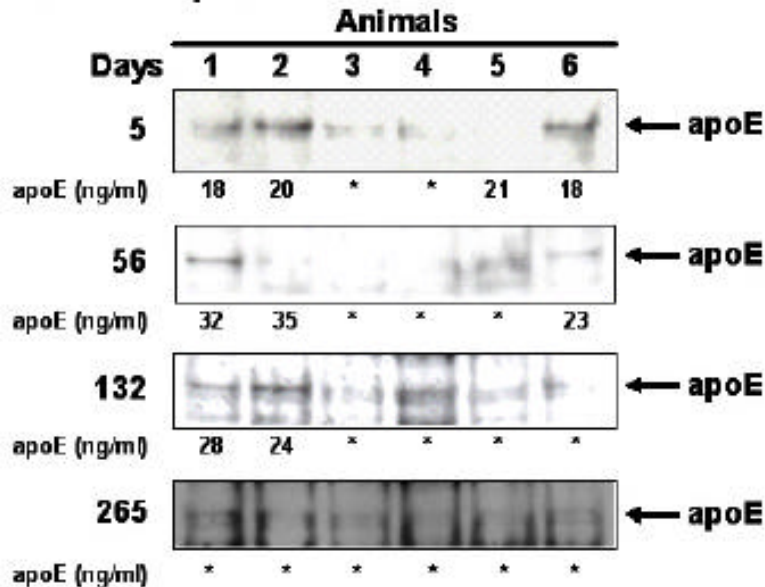
Tail-vein bleeds were taken at 5, 14, 28, 56, 132 and 265 days after intravenous vector administration, with all animals being killed at 265 days. Treatment with Ad-CMV-apoE resulted in mean peak plasma apoE levels of 645±100 ng/ml 5 days after injection, compared to 50-80 µg/ml in normal mice (Hasty et al, 1999b), with

subsequent bleeds showing a substantial decline to 12±5 ng/ml at termination (Figure 2A). This was confirmed by Western blotting which showed a marked reduction in the 34-kDa apoE transgene after 5 days (Figure 2A). In contrast, intravenous injection of Ad-EF1 -apoE resulted in very low peak levels of apoE at day 5 (<60 ng/ml), while at later times they were too close to the ELISA detection limit of 10 ng/ml to measure reliably (Figure 2B).

#### A. Ad-CMV-apoE



#### B. Ad-EF1 $\alpha$ -apoE



**Figure 2.** Plasma apoE levels in apoE<sup>-/-</sup> mice after intravenous injection of either (A) Ad-CMV-apoE (n = 7) or (B) Ad-EF1 -apoE (n = 6). Plasma apoE (34-kDa) in individual animals was detected by Western blotting analysis and quantified by a two-antibody sandwich ELISA that had a detection limit of 10 ng apoE/ml (Harris et al, 2002a). Exposure times for the Western blotting analysis were 30 min (5, 14, 28, 56 and 132 days post-injection) and 75 min (265 days post-injection). Comparison can be made between the various panels in figures 2A and 2B due to the inclusion on each gel of a plasma sample from transgenic mice containing human apoE2 (van Vlijmen et al, 1996), as a loading detection standard (data not shown). The levels of plasma apoE in normal mice are in the range 50-80 µg/ml (Hasty et al, 1999b). \*Plasma apoE is below the sensitivity limit of the ELISA for accurate quantification.

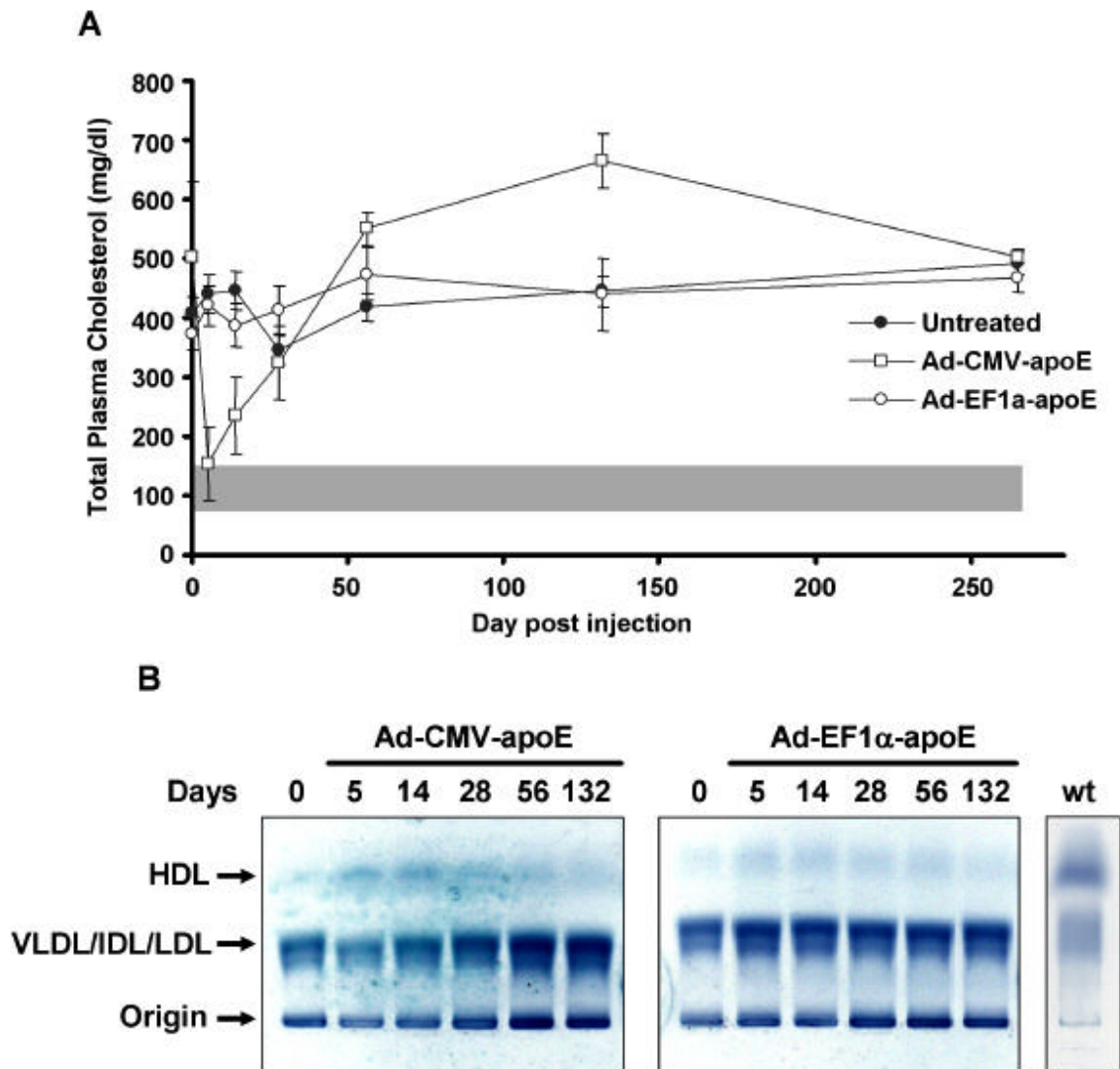
However, Western blotting with an extended exposure time revealed that apoE was still secreted at 265 days (**Figure 2B**) and, despite the amounts being very low, there was evidence to suggest that expression was sustained since levels were similar at days 56 and 132 and still detectable at 265 (**Figure 2B**). Upon Western blotting analysis of plasmas from untreated animals, no circulating apoE was evident (data not shown).

### C. Effect of Ad-EF1 -apoE administration on plasma total cholesterol and lipoprotein distribution

Plasmas from individual animals were analysed for total cholesterol and lipoprotein distribution before rAd vector administration, and at 5, 14, 28, 56, 132 and 265 days after the injections, to assess whether human apoE

gene transfer could normalize the hypercholesterolaemia of apoE<sup>-/-</sup> mice. In Ad-CMV-apoE-treated mice, total plasma cholesterol declined dramatically from 503±126 mg/dl to 153±62 mg/dl ( $P < 0.002$ ) 5 days after the injections (**Figure 3A**). Subsequently, plasma cholesterol returned to the pre-treatment level after 56 days (551±28 mg/dl) and, although increasing further (665±46 mg/dl) at 132 days (**Figure 3A**), was nearly identical to the levels in untreated animals at day 265 ( $P > 0.05$ ).

Very-low-density lipoprotein (VLDL), intermediate-density lipoprotein (IDL) and low-density lipoprotein (LDL) particles represent the majority of plasma lipoproteins in apoE<sup>-/-</sup> mice, migrating as a broad pre-band, with high-density lipoproteins (HDL) running as a fast migrating minor fraction (**Figure 3B**).

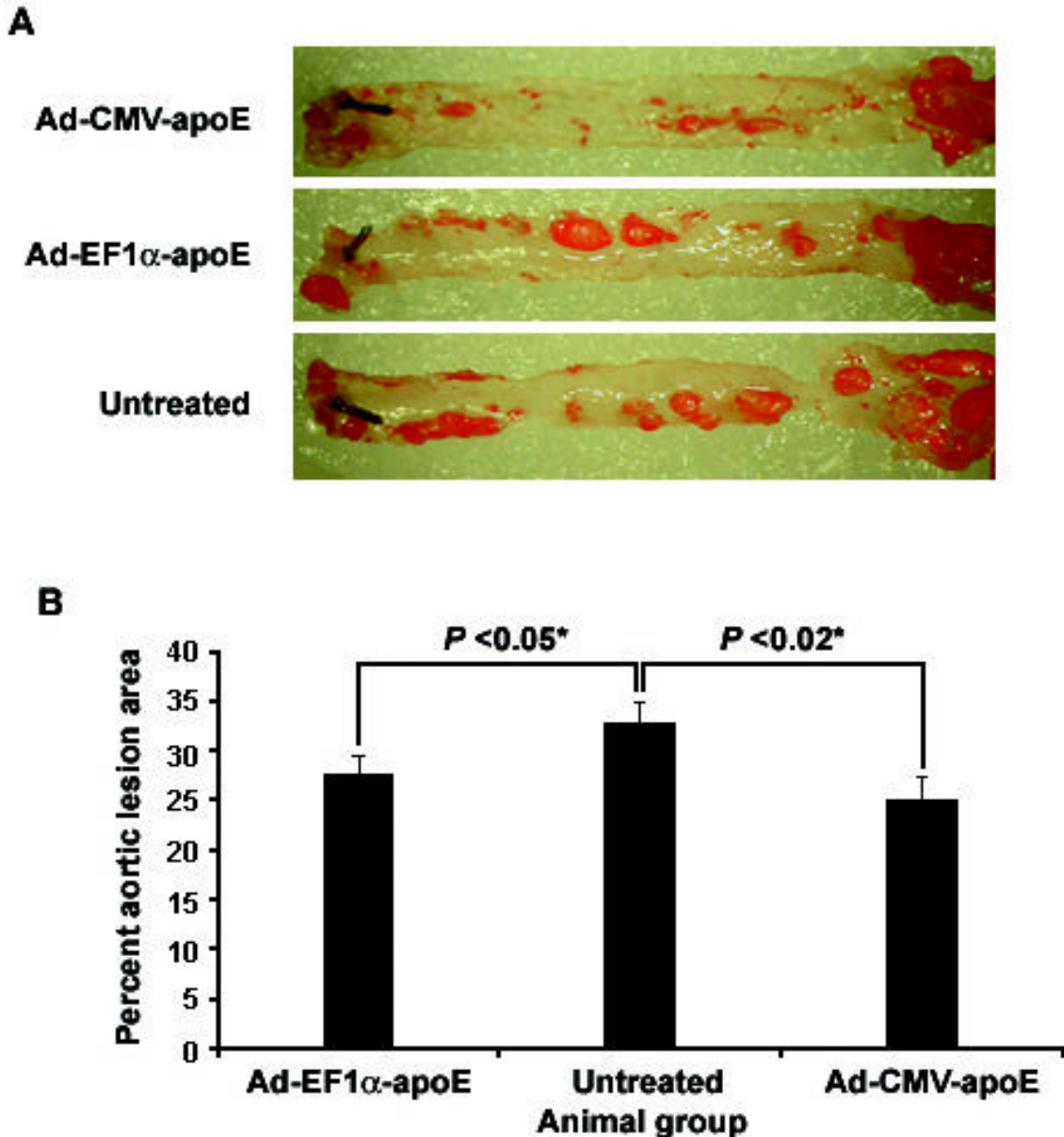


**Figure 3.** Effect of adenovirus vector administration on total plasma cholesterol and lipoprotein distribution in apoE<sup>-/-</sup> mice. **(A)** Total plasma cholesterol levels were determined for individual animals following tail-vein injections of either Ad-CMV-apoE ( $n = 7$ ) or Ad-EF1 -apoE ( $n = 6$ ). The shaded area indicates the range of plasma cholesterol levels found in normal mice (Plump et al, 1992; Zhang et al, 1992). Values are means  $\pm$  S.E. and data from untreated animals are also shown. **(B)** Lipoprotein distribution in pooled plasmas from apoE<sup>-/-</sup> mice following intravenous injections of either Ad-CMV-apoE or Ad-EF1 -apoE. Plasma samples (10  $\mu$ l) were separated by 0.8% native agarose gel electrophoresis, followed by staining with Sudan black to reveal lipoprotein mobilities and estimate relative amounts. wt, plasma from a C57BL/10 mouse.

In contrast, C57BL/10 mice have lower proportions of VLDL/IDL/LDL, with increased levels of circulating HDL. Following intravenous administration of Ad-CMV-apoE, these pre-migrating lipoproteins were markedly reduced at 5 days (Figure 3B), with a corresponding increase in HDL, although thereafter VLDL/IDL/LDL began to re-accumulate in the plasma, in fact, to higher levels than those observed prior to the treatment (compare lanes 132 and 0, left panel, Figure 3). In contrast to these hypolipidaemic effects, “albeit short-term”, of Ad-CMV-apoE, intravenous injection of Ad-EF1 -apoE produced no significant changes in plasma cholesterol or lipoprotein distribution in the apoE<sup>-/-</sup> mice (Figure 3A and 3B).

#### D. Retardation of atherosclerotic lesion progression following intravenous injection of Ad-EF1 -apoE

To assess the effect of Ad-EF1 -apoE on atherosclerotic lesion progression, animals were killed 265 days post-treatment and their aortae removed. The percentage of luminal area from the aortic arch to the diaphragm which stained with Oil-Red-O was then measured. Mice treated with Ad-EF1 -apoE had aortic lesion areas of 27.7±1.9% (n = 6), a 15% retardation of lesion progression ( $P < 0.05$ ) compared to untreated



**Figure 4.** Retardation of atherosclerosis progression in the aortae of 6-8 week old apoE<sup>-/-</sup> mice following adenovirus vector administration. Animals were killed 265 days after intravenous administration of either Ad-CMV-apoE or Ad-EF1 -apoE; their aortae were removed, dissected *en face* onto cork beds and stained with Oil-Red O. (A) Representative aortae from each of the animal groups. (B) Mean percentage aortic lesion areas of Ad-CMV-apoE- (n = 6) and Ad-EF1 -apoE-treated (n = 6) mice and the untreated control group (n = 7). Values shown are mean ± S.E. \*, comparison of Ad-CMV-apoE- and Ad-EF1 -apoE-treated mice against the untreated control group by Student's 1-tailed unpaired *t*-test.

controls ( $32.8 \pm 2\%$ ,  $n = 7$ ) (**Figure 4A and 4B**). This reduction was similar to those animals treated with Ad-CMV-apoE, which had a mean lesion area of  $25.3 \pm 2.3\%$  ( $n = 6$ ) and a 23% retardation of lesion progression ( $P < 0.02$ ) (**Figure 4A and 4B**).

#### IV. Discussion

Here we report a significant retardation of aortic atherosclerotic lesion progression in young apoE<sup>-/-</sup> mice intravenously injected with the [E1<sup>-</sup>, E3<sup>-</sup>, polymerase<sup>-</sup>] rAd vector, Ad-EF1<sup>-</sup>-apoE, despite low expression of the human apoE transgene and no reduction in plasma total cholesterol or atherogenic remnant lipoproteins. This is consistent with intramuscular injection of apoE<sup>-/-</sup> mice with plasmid or recombinant adeno-associated virus (rAAV) vectors expressing apoE, as these treatments also result in low plasma apoE but protect against atherosclerosis without correcting the hypercholesterolaemia (Athanasopoulos et al, 2000; Harris et al, 2002b). Similarly, transgenic mice in which apoE expression is restricted to adrenal glands or macrophages have low plasma apoE (1-2% of wild-type levels), but are atheroprotected whilst remaining hyperlipidaemic (Thorngate et al, 2000, Hasty et al, 1999a). Intriguingly, studies in which apoE<sup>+/+</sup> bone marrow was mixed with apoE<sup>-/-</sup> marrow in increasing amounts and then transplanted into apoE<sup>-/-</sup> recipient mice suggests that a threshold concentration of  $\sim 0.4 \mu\text{g apoE/ml}$  plasma is required for cholesterol homeostasis (Hasty et al, 1999b). Our own data following intravenous injections of Ad-CMV-apoE supports this conclusion; the initial normalization of plasma cholesterol and subsequent rebound, mirrors the level of apoE on days 5 ( $0.65 \pm 0.1 \mu\text{g/ml}$ ), 14 ( $0.4 \pm 0.09 \mu\text{g/ml}$ ) and 28 ( $0.17 \pm 0.05 \mu\text{g/ml}$ ) (**Figure 3A**).

Recombinant apoE is known to localize to the arterial intima following rAd-mediated liver transduction (Tsukamoto et al, 1999). This may explain why treatment with Ad-EF1<sup>-</sup>-apoE inhibits atherosclerotic lesion progression in the presence of high levels of atherogenic lipoproteins, since atheroprotection is also seen when apoE expression in transgenic apoE<sup>-/-</sup> mice is restricted to the artery wall or to macrophages (Bellosta et al, 1995; Shimano et al, 1995). One proposed mechanism is that apoE promotes cholesterol efflux from the arterial wall and its transport to the liver for excretion (Bellosta et al, 1995; Shimano et al, 1995). In support, there is evidence that macrophage-derived apoE can restore the capacity of apoE-deficient plasma to efflux cholesterol from cultured fibroblasts (Zhu et al 1998) and that apoE facilitates interaction of apoA1 in HDL particles with scavenger receptor-B1 (SR-B1), which selectively extracts cholesteryl esters from HDL into liver (Arai et al 1999, Owen and Mulcahy, 2002). Paradoxically, however, cholesterol efflux via the ATP-binding cassette transporter A1 (ABCA1) is impaired by low level apoE expression (Thorngate et al, 2003) and increasing importance is now given to alternative, non-lipid transport mechanisms which can contribute to the antiatherogenic activity of apoE (Thorngate et al, 2003). These include apoE inhibition of

platelet aggregation (Riddell et al, 1997) and smooth muscle cell migration and proliferation (Ishigami et al, 1998), as well as antioxidant (Mabile et al, 2003) and anti-inflammatory activities (Stannard et al, 2001). Recently, Raffai et al, (2005) demonstrated for the first time that apoE promotes regression of atherosclerosis independently of lowering plasma cholesterol. They utilized hypomorphic apoE mice that express an apoE4-like variant of mouse apoE at plasma levels that are  $\sim 2\%$  to  $5\%$  of normal and carry the inducible Mx1-Cre apoE transgene, which allows for induction of physiological levels of apoE. After 18 weeks on a hypercholesterolaemic diet to induce a high atherosclerotic burden, animals were placed on a normal chow diet for 16 weeks, with half the animals induced to express physiological levels of apoE. Although cholesterol levels between the non-induced and induced animal groups was insignificant, the induced animals demonstrated an enhanced regression of aortic atheroma (Raffai et al, 2005). In this study, the levels of apoE produced from the EF-1 promoter corresponded to a maximum of 0.11% of normal levels throughout the study period.

The EF-1 promoter appears attractive to drive hepatic expression of transgenes. It was active in a variety of cultured cell types, providing greater and more stable expression than the promoters of the SV40 early gene or the long terminal repeat of RSV (Kim et al, 1990, 1993). Whilst *in vivo*, it gave ubiquitous and sustained expression of the cellular marker chloramphenicol acetyltransferase (CAT), during generation of transgenic mice from embryogenesis to adulthood (Hanaoka et al, 1991). These findings are consistent with the emerging concept that non-viral promoters invoke a diminished immune response to expressed transgenes compared to viral promoters (Pastore et al, 1999; Hartigan-O'Connor et al, 2001; Bojak et al, 2002) and have encouraged the use of the EF-1 promoter in gene transfer studies. Thus, a first generation rAd vector, delivered to immunodeficient mice by intravenous injection to drive expression of human 1-antitrypsin (hAAT), produced sustained physiological levels of serum hAAT protein throughout the 3 month study, with 80-90% of vector genomes targeted to the liver (Guo et al, 1996). In addition, portal vein injection of adult C57BL/6 mice with a rAAV vector expressing human factor IX (hFIX) from the EF-1 promoter produced therapeutic plasma levels of hFIX ( $200\text{-}320 \text{ ng/ml}$ ) for at least 6 months, whereas with the CMV promoter no plasma hFIX was detected at this time due to promoter shutdown (Nakai et al, 1998). Hence, in this study, the utilization of a polymerase-deleted rAd vector may have contributed to the sustained transgene expression, as the removal of the polymerase from the rAd vector genome virtually eliminates adenoviral late gene expression, which significantly reduces hepatotoxicity as well as removing the primary trigger for the immune clearance of adenovirus-transduced cells (Amalfitano et al, 1998; Hu et al, 1999; Everett et al, 2003).

Disappointingly, however, we found only low levels of circulating apoE *in vivo* following transduction with  $2 \times 10^{10}$  vp of Ad-EF1<sup>-</sup>-apoE, even though previously reported data would predict that  $>95\%$  of hepatocytes

would be infected, since adult mice have  $\sim 10^8$  liver cells giving a theoretical MOI of  $\sim 200$  (Li et al, 1993). Furthermore, real-time PCR data from our laboratory has shown 2 copies of second generation Ad vector genomes per hepatocyte (Harris et al, 2002a; JDH, unpublished observation). This differed from the efficient secretion of apoE by HepG2 cells, markedly above endogenous levels, perhaps because actively cycling cell cultures have higher levels of EF-1 compared to adult hepatocytes *in vivo*, which proliferate slowly (Leffert et al, 1982). Additionally, interference from transcriptional elements in the adenovirus genome may cause low apoE expression by interfering with transcriptional activity of heterologous transgene promoters. These viral sequences include the inverted terminal repeats (ITRs), the E1A enhancer and the E2, E4 and protein IX (pIX) promoters (Steinwaerder and Lieber, 2000). Typically, transgene cassettes replace the E1-deleted region of the Ad genome. This leaves 5'ITR/E1A and pIX orientated 5' and 3', respectively and these sequences contain inhibitory elements that can attenuate the activity and tissue specificity of transgene expression. For example, insertion of the 5'ITR and pIX regions into a plasmid vector containing a muscle-specific promoter caused decreased expression of a reporter gene and loss of muscle-specific expression (Shi et al, 1997).

But why should a 1<sup>st</sup> generation rAd containing the EF-1 promoter produce therapeutic amounts of the plasma protein hAAT (Guo et al, 1996), when only low level expression occurs with Ad-EF1 -apoE? One possibility is that first generation vectors have a degree of background replication and viral gene expression that augments transgene expression of a protein such as hAAT. An alternative possibility is that though the E1 region is deleted from both rAd vectors, cellular transcription factors functionally substitute for E1A to transactivate the E2 and E4 promoters, which then interfere with transgene expression from the heterologous promoter (EF1) (Steinwaerder and Lieber, 2000). Presumably such interference is nominal in first generation E1-deleted rAd, whereas our 2<sup>nd</sup> generation rAd vector with the DNA polymerase deleted is more vulnerable. In future work, it may be possible to circumvent this problem by use of insulating DNA elements to shield the transcriptional activity of the apoE transgene cassette from adenoviral sequence interference. Thus, when insulator elements derived from the chicken  $\beta$ -globin locus (HS-4) flanked the transgene cassette in a first generation rAd vector, the performance of a metal-inducible promoter was markedly improved (Steinwaerder and Lieber, 2000). Alternatively, promising results are reported using newly-developed liver-specific promoters (Gehrke et al, 2003; Ziegler et al, 2004; Nakai et al, 2005) and, although they have yet to be tested in rAd vectors, these offer further hope for sustained high-level liver expression of therapeutic transgenes.

In summary, liver-directed administration of Ad-EF1 -apoE to apoE<sup>-/-</sup> mice produced only low levels of plasma apoE, but retarded the progression of early fatty streak lesions to advanced atherosclerotic plaques, despite failing to normalize the hyperlipidaemic phenotype. In addition, we suggest that interference from transcriptional elements in the rAd vector genome may have caused the

low levels of EF-1 promoter-driven apoE transgene expression and propose the use of DNA insulator elements to counteract this problem in future studies.

## Acknowledgments

Parts of this work were supported by grants from the British Heart Foundation (PG/99032), Sir Jules Thorn Charitable Trust (R2468-88-7), National Heart Research Fund (RG2447) and Wellcome Trust (054413 and GR066327FR).

## References

- Amalfitano A, Hauser MA, Hu H, Serra D, Begy CR and Chamberlain JS (1998) Production and characterization of improved adenovirus vectors with the E1, E2b and E3 genes deleted. **J Virol** 72, 926-933.
- Arai T, Rinninger F, Varban L, Fairchild-Huntress V, Liang CP, Chen W, Seo T, Deckelbaum R, Huszar D and Tall AR (1999) Decreased selective uptake of high density lipoprotein cholesteryl esters in apolipoprotein E knockout mice. **Proc Natl Acad Sci USA** 96, 12050-12055.
- Athanasopoulos T, Owen JS, Hassall D, Dunckley MG, Drew J, Goodman J, Tagalakis AD, Riddell DR and Dickson G (2000) Intramuscular injection of a plasmid vector expressing human apolipoprotein E limits progression of xanthoma and aortic atheroma in apoE-deficient mice. **Hum Mol Genet** 9, 2545-2551.
- Bellosta S, Mahley RW, Sanan DA, Murata J, Newland DL, Taylor JM and Pitas RE (1995) Macrophage-specific expression of human apolipoprotein E reduces atherosclerosis in hypercholesterolemic apolipoprotein E-null mice. **J Clin Invest** 96, 2170-2179.
- Bojak A, Hammer D, Wolf H and Wagner R (2002) Muscle specific ubiquitous expression of Gag based HIV-1 DNA vaccines: a comparative analysis. **Vaccine** 20, 1975-1979.
- Breslow JL, McPherson J, Nussbaum AL, Williams HW, Lofquist-Kahl F, Karathanasis SK and Zannis VI (1982) Identification and DNA sequence of a human Apolipoprotein E cDNA clone. **J Biol Chem** 257, 14639-14641.
- Ding E, Hu H, Hodges BL, Migone F, Serra D, Xu F, Chen Y-T and Amalfitano A (2002) Efficacy of gene therapy for a prototypical lysosomal storage disease (GSD-II) is critically dependent on vector dose, transgene promoter and the tissues targeted for vector transduction. **Mol Ther** 5, 436-446.
- Everett RS, Hodges BL, Ding EY, Xu F, Serra D and Amalfitano A (2003) Liver toxicities typically induced by first generation adenoviral vectors can be reduced by use of E1, E2b-deleted adenoviral vectors. **Hum Gene Ther** 14, 1715-1726.
- Fielding CJ and Fielding PE (1995) Molecular physiology of reverse cholesterol transport. **J Lipid Res** 36, 211-228.
- Gehrke S, Jerome V and Muller R (2003) Chimeric transcriptional control units for improved liver-specific transgene expression. **Gene** 322, 137-143.
- Guo ZS, Wang L-H, Eisensmith RC and Woo SLC (1996) Evaluation of promoter strength for hepatic gene expression *in vivo* following adenovirus-mediated gene transfer. **Gene Ther** 3, 802-810.
- Hanaoka K, Hayasaka M, Uetsuki T, Fujisawa-Sehara A and Nabeshima Y-I (1991) A stable cellular marker for the analysis of mouse chimeras: the bacterial chloramphenicol acetyltransferase gene driven by the human elongation factor 1 promoter. **Differentiation** 48, 183-189.
- Harris JD, Graham IR, Schepelmann S, Stannard AK, Roberts ML, Hodges BL, Hill V, Amalfitano A, Hassall DG, Owen JS and Dickson G (2002a) Acute regression of advanced and



- retardation of early aortic atheroma in immunocompetent apolipoprotein-E (apoE) deficient mice by administration of a second generation [E1<sup>-</sup>, E3<sup>-</sup>, polymerase<sup>-</sup>] adenovirus vector expressing human apoE. **Hum Mol Genet** 11, 43-58.
- Harris JD, Schepelmann S, Athanasopoulos T, Graham IR, Stannard AK, Mohri Z, Hill V, Hassall DG, Owen JS and Dickson G (2002b) Inhibition of atherosclerosis in apolipoprotein-E deficient mice following muscle transduction with adeno-associated virus vectors encoding human apolipoprotein-E. **Gene Ther** 9, 21-29.
- Hartigan-O'Connor D, Kirk CJ, Crawford R, Mulé JJ and Chamberlain JS (2001) Immune evasion by muscle-specific gene expression in dystrophic muscle. **Mol Ther** 4, 525-533.
- Hasty AH, Linton MF, Brandt SJ, Babaev VR, Gleaves LA and Fazio S (1999a) Retroviral gene therapy in apoE-deficient mice: apoE expression in the artery wall reduces early foam cell lesion formation. **Circulation** 99, 2571-2576.
- Hasty AH, Linton MF, Swift LL and Fazio S (1999b) Determination of the lower threshold of apolipoprotein E resulting in remnant lipoprotein clearance. **J Lipid Res** 40, 1529-1538.
- Hu H, Serra D and Amalfitano A (1999) Persistence of an [E1<sup>-</sup>, polymerase<sup>-</sup>] adenovirus vector despite transduction of a neoantigen into immune-competent mice. **Hum Gene Ther** 10, 355-364.
- Ishigami M, Swertfeger DK, Granholm NA and Hui DY (1998) Apolipoprotein E inhibits platelet-derived growth factor-induced vascular smooth muscle cell migration and proliferation by suppressing signal transduction and preventing cell entry to G1 phase. **J Biol Chem** 273, 20156-20161.
- Kashyap VS, Santamarina-Fojo S, Brown DR, Parrott CL, Applebaum-Bowden D, Meyn S, Talley G, Paigen B, Maeda N and Brewer HB (1995) Apolipoprotein E deficiency in mice: gene replacement and prevention of atherosclerosis using adenovirus vectors. **J Clin Invest** 96, 1612-1620.
- Kay M, Li Q, Liu T-J, Leland F, Toman C, Finegold M and Woo SLC (1992) Hepatic gene therapy: persistent expression of human 1-antitrypsin in mice after direct gene delivery in vivo. **Hum Gene Ther** 3, 641-647.
- Kim DW, Harada T, Saito I and Miyamura T (1993) An efficient expression vector for stable expression in human liver cells. **Gene** 134, 307-308.
- Kim DW, Uetsuki T, Kaziro Y, Yamaguchi N and Sugano S (1990) Use of the elongation factor 1 promoter as a versatile and efficient expression system. **Gene** 91, 217-223.
- Leffert HL, Koch KS, Lad PJ, Skelly H and de Hempinne B (1982) Hepatocyte regeneration, replication and differentiation, in: I. Arias, H. Popper, D. Schachter, D.A. Shafritz (Eds). **The Liver: Biology and Pathology**. Raven, New York, NY, 601.
- Li Q, Kay MA, Finegold M, Stratford-Perricaudet LD and Woo SLC (1993) Assessment of recombinant adenoviral vectors for hepatic gene therapy. **Hum Gene Ther** 4, 403-409.
- Loser P, Jennings GS, Strauss M and Sandig V (1998) Reactivation of the previously silenced cytomegalovirus major immediate-early promoter in the mouse liver: involvement of NF B. **J Virol** 72, 180-190.
- Mabile L, Lefebvre C, Lavigne J, Boulet L, Davignon J, Lussier-Cacan S and Bernier L (2003) Secreted macrophage apolipoprotein E reduces macrophage-mediated LDL oxidation in an isoform-dependent way. **J Cell Biochem** 90, 766-776.
- Mahley RW and Rall SC Jr (2000) Apolipoprotein E: far more than a lipid transport protein. **Annu Rev Genomics Hum Genet** 1, 507-537.
- Nakai H, Fuess S, Storm TA, Muramatsu S, Nara Y and Kay MA (2005) Unrestricted hepatocyte transduction with adeno-associated virus serotype 8 vectors in mice. **J Virol** 79, 214-224.
- Nakai H, Herzog RW, Hagstrom JN, Walter J, Kung S-H, Yang EY, Tai SJ, Iwaki Y, Kurtzman GJ, Fisher KJ, Colosi P, Couto LB and High KA (1998) Adeno-associated viral vector mediated gene transfer of human blood coagulation factor IX into mouse liver. **Blood** 91, 4600-4607.
- Nakashima Y, Plump AS, Raines EW, Breslow JL and Ross R (1994) ApoE-deficient mice develop lesions of all phases of atherosclerosis throughout the arterial tree. **Arterioscler Thromb Vasc Biol** 14, 133-140.
- Owen JS and Mulcahy JV (2002) ATP-binding cassette A1 protein and HDL homeostasis. **Atheroscler Suppl** 3, 13-22.
- Pastore L, Morral N, Zhou H, Garcia R, Parks RJ, Kochanek S, Graham FL, Lee B and Beaudet AL (1999) Use of a liver-specific promoter reduces immune response to the transgene in adenoviral vectors. **Hum Gene Ther** 10, 1773-1781.
- Piedrahita JA, Zhang SH, Hagaman JR, Oliver PM and Maeda N (1992) Generation of mice carrying a mutant apolipoprotein E gene inactivated by gene targeting in embryonic stem cells. **Proc Natl Acad Sci USA** 89, 4471-4475.
- Plump AS, Smith JD, Hayek T, Aalto-Setälä K, Walsh A, Verstuyft JG, Rubin EM, and Breslow JL (1992) Severe hypercholesterolemia and atherosclerosis in apolipoprotein E-deficient mice created by homologous recombination in ES cells. **Cell** 71, 343-353.
- Qin L, Ding Y, Pahud DR, Chang E, Imperiale MJ and Bromberg JS (1997) Promoter attenuation in gene therapy: interferon- and tumor necrosis- transgene expression. **Hum Gene Ther** 8, 2019-2029.
- Raffai RL, Loeb SM and Weisgraber KH (2005) Apolipoprotein E promotes the regression of atherosclerosis independently of lowering plasma cholesterol levels. **Arterioscler Thromb Vasc Biol** 25, 436-441.
- Riddell DR, Graham A and Owen JS (1997) Apolipoprotein E inhibits platelet aggregation by stimulation of the L-arginine:nitric oxide pathway. Implications for vascular disease. **J Biol Chem** 272, 89-95.
- Shi Q, Wang Y and Worton R (1997) Modulation of the specificity and activity of a cellular promoter in an adenoviral vector. **Hum Gene Ther** 8,403-410.
- Shimano H, Ohsuga J, Shimada M, Namba Y, Gotoda T, Harada K, Katsuki M, Yazaki Y and Yamada N (1995) Inhibition of diet-induced atheroma formation in transgenic mice expressing apolipoprotein E in the arterial wall. **J Clin Invest** 95, 469-476.
- Stannard AK, Riddell DR, Sacre SM, Tagalakis AD, Langer C, von Eckardstein A, Cullen, P, Athanasopoulos T, Dickson G and Owen JS (2001) Cell-derived apolipoprotein E particles inhibit cytokine-induced vascular cell adhesion molecule-1 expression in endothelial cells. **J Biol Chem** 276, 46011-46016.
- Steinwaerder DS and Lieber A (2000) Insulation from viral transcriptional regulatory elements improves inducible transgene expression from adenovirus vectors in vitro and in vivo. **Gene Ther** 7, 556-567.
- Stevenson SC, Marshall-Neff J, Teng B, Lee CB, Roy S and McClelland A (1995) Phenotypic correction of hypercholesterolemia in apoE-deficient mice by adenovirus-mediated in vivo gene transfer. **Arterioscler Thromb Vasc Biol** 15, 479-484.
- Thorngate FE, Rudel LL, Walzem RL and Williams DL (2000) Low levels of extrahepatic nonmacrophage apoE inhibit atherosclerosis without correcting hypercholesterolemia in ApoE-deficient mice. **Arterioscler Thromb Vasc Biol** 20, 1939-1945.
- Thorngate, FE, Yancey PG, Kellner-Weibel G, Rudel LL, Rothblat GH and Williams DL (2003) Testing the role of

- apoA-I, HDL and cholesterol efflux in the atheroprotective action of low-level apoE expression. **J Lipid Res** 44, 2331-2338.
- Tsukamoto K, Smith P, Glick JM and Rader DJ (1997) Liver-directed gene transfer and prolonged expression of three major human apoE isoforms in apoE-deficient mice. **J Clin Invest** 100, 107-114.
- Tsukamoto K, Tangirala R, Chun SH, Puré E and Rader DJ (1999) Rapid regression of atherosclerosis induced by liver-directed gene transfer of apoE in apoE-deficient mice. **Arterioscler Thromb Vasc Biol** 19, 2162-2170.
- van Vlijmen BJM, van Dijk KW, van't Hof HB, van Gorp PJJ, van der Zee A, van der Boom H, Breuer ML, Hofker MH, and Havekes LM (1996) In the absence of endogenous mouse apolipoprotein E, apolipoprotein E\*2(Arg-158 Cys) transgenic mice develop more severe hyperlipoproteinemia than apolipoprotein E\*3-leiden transgenic mice. **J Biol Chem** 271, 30595-30602.
- Yang Y, Jooss KU, Su Q, Ertl HCJ and Wilson JM (1996) Immune responses to viral antigens versus transgene product in the elimination of recombinant adenovirus-infected hepatocytes in vivo. **Gene Ther** 3, 137-144.
- Zhang SH, Reddick RL, Piedrahita JA, and Maeda N (1992) Spontaneous hypercholesterolemia and arterial lesions in mice lacking apolipoprotein E. **Science** 258, 468-471.
- Zhu Y, Bellosta S, Langer C, Bernini F, Pitas RE, Mahley RW, Assmann G and von Eckardstein A (1998) Low-dose expression of a human apolipoprotein E transgene in macrophages restores cholesterol efflux capacity of apolipoprotein E-deficient mouse plasma. **Proc Natl Acad Sci USA** 95, 7585-7590.
- Ziegler RJ, Lonning SM, Armentano D, Li C, Souza DW, Cherry M, Ford C, Barbon CM, Desnick RJ, Gao G, Wilson JM, Peluso R, Godwin S, Carter BJ, Gregory RJ, Wadsworth SC and Cheng SH (2004) AAV2 vector harboring a liver-restricted promoter facilitates sustained expression of therapeutic levels of alpha-galactosidase A and the induction of immune tolerance in Fabry mice. **Mol Ther** 9, 231-240.



Julian D. Harris