

# Integrated Economic and Climate Projections for Impact Assessment

Sergey Paltsev, Erwan Monier, Jeffery Scott,  
Andrei Sokolov and John Reilly



**Report No. 243**  
**May 2013**

The MIT Joint Program on the Science and Policy of Global Change is an organization for research, independent policy analysis, and public education in global environmental change. It seeks to provide leadership in understanding scientific, economic, and ecological aspects of this difficult issue, and combining them into policy assessments that serve the needs of ongoing national and international discussions. To this end, the Program brings together an interdisciplinary group from two established research centers at MIT: the Center for Global Change Science (CGCS) and the Center for Energy and Environmental Policy Research (CEEPR). These two centers bridge many key areas of the needed intellectual work, and additional essential areas are covered by other MIT departments, by collaboration with the Ecosystems Center of the Marine Biology Laboratory (MBL) at Woods Hole, and by short- and long-term visitors to the Program. The Program involves sponsorship and active participation by industry, government, and non-profit organizations.


To inform processes of policy development and implementation, climate change research needs to focus on improving the prediction of those variables that are most relevant to economic, social, and environmental effects. In turn, the greenhouse gas and atmospheric aerosol assumptions underlying climate analysis need to be related to the economic, technological, and political forces that drive emissions, and to the results of international agreements and mitigation. Further, assessments of possible societal and ecosystem impacts, and analysis of mitigation strategies, need to be based on realistic evaluation of the uncertainties of climate science.

This report is one of a series intended to communicate research results and improve public understanding of climate issues, thereby contributing to informed debate about the climate issue, the uncertainties, and the economic and social implications of policy alternatives. Titles in the Report Series to date are listed on the inside back cover.

Ronald G. Prinn and John M. Reilly  
*Program Co-Directors*

For more information, please contact the Joint Program Office

Postal Address: Joint Program on the Science and Policy of Global Change  
77 Massachusetts Avenue  
MIT E19-411  
Cambridge MA 02139-4307 (USA)  
Location: 400 Main Street, Cambridge  
Building E19, Room 411  
Massachusetts Institute of Technology  
Access: Phone: +1.617. 253.7492  
Fax: +1.617.253.9845  
E-mail: [globalchange@mit.edu](mailto:globalchange@mit.edu)  
Web site: <http://globalchange.mit.edu/>

 Printed on recycled paper

# Integrated Economic and Climate Projections for Impact Assessment

Sergey Paltsev<sup>\*†§</sup>, Erwan Monier<sup>\*§</sup>, Jeffery Scott<sup>\*</sup>, Andrei Sokolov<sup>\*</sup> and John Reilly<sup>\*</sup>

## Abstract

*We designed scenarios for impact assessment that explicitly address policy choices and uncertainty in climate response. Economic projections and the resulting greenhouse gas emissions for the “no climate policy” scenario and two stabilization scenarios: at 4.5 W/m<sup>2</sup> and 3.7 W/m<sup>2</sup> by 2100 are provided. They can be used for a broader climate impact assessment for the US and other regions, with the goal of making it possible to provide a more consistent picture of climate impacts, and how those impacts depend on uncertainty in climate system response and policy choices. The long-term risks, beyond 2050, of climate change can be strongly influenced by policy choices. In the nearer term, the climate we will observe is hard to influence with policy, and what we actually see will be strongly influenced by natural variability and the earth system response to existing greenhouse gases. In the end, the nature of the system is that a strong effect of policy, especially directed toward long-lived GHGs, will lag by 30 to 40 years its implementation.*

## Contents

1. INTRODUCTION.....	1
2. DESCRIPTION OF THE MODELING FRAMEWORK.....	2
3. SCENARIO DESIGN.....	4
3.1 Policy Design.....	4
3.2 Climate Parameter Choice.....	6
4. ECONOMIC AND ENERGY PROJECTIONS.....	7
5. GLOBAL EARTH SYSTEM IMPLICATIONS.....	10
6. CONCLUSIONS.....	12
7. REFERENCES.....	13

## 1. INTRODUCTION

The evidence that the climate is changing and that human activities are responsible has been confirmed by the Intergovernmental Panel on Climate Change (IPCC, 2007c) and by the US National Academy of Sciences (NRC, 2011). Attention has turned to how likely future climate change might affect the economy and natural ecosystems. The US government has adopted a “social cost of carbon” concept for regulatory proceedings on greenhouse gas mitigation, based on a measure of damage caused by climate change (IWGSCC, 2010; Marten *et al.*, 2012). While there is hope of avoiding climate change—the international community has set the goal of keeping warming to less than 2°C above preindustrial—even if that goal is achieved the world and the US would see on the order of another 1.2°C of warming over the next several decades. Given the challenge of achieving such a goal and the lack of progress in developing policies that would likely be needed to achieve it, the world may well experience considerably more warming. Beyond just understanding the potential impacts of climate change on the US for a given scenario, one may be interested in better understanding the benefits of a mitigation strategy: that is how much disruption is avoided for a given mitigation scenario compared with doing nothing or much

---

\* Joint Program on the Science and Policy of Global Change, Massachusetts Institute of Technology, Cambridge, MA.

† Corresponding author (Email: [paltsev@mit.edu](mailto:paltsev@mit.edu)).

§ Sergey Paltsev and Erwan Monier wish to be considered as joint first authors.

less mitigation. To answer these questions we need an integrated approach to economic and climate scenario design so that there is a clear relationship between a specific population and economic growth scenario, the resultant emissions and climate outcomes, and back again to the impacts on an economic scenario at least approximately consistent with that driving the emissions scenario.

In this paper we lay out the construction of such a set of scenarios that form the basis for additional analyses of climate impacts. The scenarios are constructed using the MIT Integrated Earth System Model (IGSM) version 2.3 (Dutkiewicz *et al.*, 2005; Sokolov *et al.*, 2005). A fully integrated approach would include climate impact and adaptation feedbacks on the economy so that, in principle, those feedbacks might affect the level of energy, land use, and industrial activity and thus the emissions of greenhouse gases themselves, but that was beyond this exercise. It is useful to compare very briefly with what has gone before. On the one side, there are models such as DICE (Nordhaus, 2008), FUND (Anthoff and Tol, 2009), and PAGE (Hope, 2013) that attempt a full integration where the overall level of the economy is jointly determined by conventional macroeconomic factors such as labor productivity growth, savings and investment, costs of mitigating greenhouse gases and the damage/adaptation costs related to climate change itself. The goal of these models is often to estimate an “optimal” emissions control path where the marginal social cost of mitigation is equal to the marginal social damage cost of climate change. However, to accomplish this feat, typically the mitigation costs and the damage costs are estimated as a reduced form functions, and so details such as whether warming would change heating demands or land use and thus emissions are omitted. Damage functions are often derived from a meta-analysis of the literature. In this formulation damages are often simply a single dollar value with no trace back to whether they are due to reduced crop yields in region a and increased air conditioning in region b. At the other end of the spectrum are impact and adaptation studies, reviewed extensively by the IPCC working group II (IPCC, 2007a), that are the basis of these meta-analyses. These are often highly detailed, but may be focused on a single region, and based on one or a few climate scenarios that differ widely among the studies because of inherent differences in climate models as well as different economic and emissions scenarios. Emissions vary because of different economic growth and technology assumptions as well as different assumptions about policy. Meta-analyses often summarize the climate change scenario by a single indicator, global mean surface temperature increase, ignoring other patterns of change that may be important. While useful for many purposes, the mix of different reasons for different climate scenarios makes it difficult to trace back and conclude that Policy A leads to damages of X, and more stringent policy B leads to damages of Y, and so the benefits of taking the more stringent policy are X minus Y. The goal of the scenario development exercise developed here is to allow such a calculation while also including considerable detail on each impact sector.

## **2. DESCRIPTION OF THE MODELING FRAMEWORK**

The MIT Integrated Global System Model version 2.3 (IGSM2.3) (Dutkiewicz *et al.*, 2005; Sokolov *et al.*, 2005) is an integrated assessment model that couples a human activity model to a fully coupled earth system model of intermediate complexity that allows simulation of critical

feedbacks among its various components, including the atmosphere, ocean, land and urban processes. The earth system component of the IGSM includes a two-dimensional zonally averaged statistical dynamical representation of the atmosphere, a three-dimensional dynamical ocean component with a thermodynamic sea-ice model and an ocean carbon cycle (Dutkiewicz *et al.*, 2005, 2009) and a Global Land Systems (GLS, Schlosser *et al.*, 2007) that represents terrestrial water, energy and ecosystem processes, including terrestrial carbon storage and the net flux of carbon dioxide, methane and nitrous oxide from terrestrial ecosystems. The IGSM2.3 also includes an urban air chemistry model (Mayer *et al.*, 2000) and a detailed global scale zonal-mean chemistry model (Wang *et al.*, 1998) that considers the chemical fate of 33 species including greenhouse gases and aerosols. Finally, the human systems component of the IGSM is the MIT Emissions Predictions and Policy Analysis (EPPA) model (Paltsev *et al.*, 2005), which provides projections of world economic development and emissions over 16 global regions along with analysis of proposed emissions control measures.

EPPA is a recursive-dynamic multiregional general equilibrium model of the world economy, which is built on the Global Trade Analysis Project (GTAP) dataset of the world economic activity augmented by data on the emissions of greenhouse gases, aerosols and other relevant species, and details of selected economic sectors. The model projects economic variables (gross domestic product, energy use, sectoral output, consumption, etc.) and emissions of greenhouse gases (CO<sub>2</sub>, CH<sub>4</sub>, N<sub>2</sub>O, HFCs, PFCs and SF<sub>6</sub>) and other air pollutants (CO, VOC, NO<sub>x</sub>, SO<sub>2</sub>, NH<sub>3</sub>, black carbon and organic carbon) from combustion of carbon-based fuels, industrial processes, waste handling and agricultural activities. The model identifies sectors that produce and convert energy, industrial sectors that use energy and produce other goods and services, and the various sectors that consume goods and services (including both energy and non-energy). The model covers all economic activities and tracks domestic use and international trade. Energy production and conversion sectors include coal, oil, and gas production, petroleum refining, and an extensive set of alternative low-carbon and carbon-free generation technologies.

A major feature of the IGSM is the flexibility to vary key climate parameters controlling the climate response: the climate sensitivity, ocean heat uptake rate and net aerosol forcing. The IGSM is also computationally efficient and thus particularly adapted to conduct sensitivity experiments like estimating probability distribution functions of climate parameters using optimal fingerprint diagnostics (Forest *et al.*, 2008) or deriving probabilistic projections of 21<sup>st</sup> century climate change under varying emissions scenarios and climate parameters (Sokolov *et al.*, 2009; Webster *et al.*, 2012). The IGSM has also been used to run several-millenia-long simulations (Eby *et al.*, 2012; Zickfeld *et al.*, 2013).

Because the atmospheric component of the IGSM is two-dimensional (zonally averaged), regional climate cannot be directly resolved. To simulate regional climate change, two methods have been applied. First, the IGSM-CAM framework (Monier *et al.*, 2013b) links the IGSM to the National Center for Atmospheric Research (NCAR) Community Atmosphere Model (CAM). Secondly, a pattern scaling method extends the latitudinal projections of the IGSM 2-D zonal-mean atmosphere by applying longitudinally resolved patterns from observations, and from

climate-model projections (Schlosser *et al.*, 2012). The companion paper by (Monier *et al.*, 2013a) describes both a method and presents a matrix of simulations to investigate regional climate change uncertainty in the US.

### 3. SCENARIO DESIGN

Scenario design is a challenge because of the desire to span a wide range of possible outcomes while keeping the number of scenarios to a manageable level. A full uncertainty analysis would sample from uncertain economic/technology and climate parameter inputs. Policy could be addressed as an additional uncertain variable where estimates of the likelihood of policy occurring at different times and stringencies would be necessarily a subjective judgment. The alternative, as in Webster *et al.* (2012), is to choose multiple “certain” policy scenarios, and produce a large ensemble of runs for each where the different ensemble members represent uncertainty in non-policy related economic/technology and climate parameters. A typical single large ensemble that is able to span the likely range of outcomes may include 400 members. If, then, three separate policy scenarios are examined the total number of scenarios would be 1200. The broader study design envisioned here was that a variety of analytical teams would use the scenarios for impact assessment. While this study design has the advantage of bringing in more highly resolved models of specific sectors there are some tradeoffs. One is that often the impact analysis approach requires considerable effort to set up each scenario, or the impact models themselves are computationally intensive, thus realistically these teams were likely to be able to consider only a few to a dozen scenarios. Another limitation is that it precludes a full integration and feedbacks. We thus considered 3 policy scenarios and 4 scenarios to capture uncertainty in climate response resulting in 12 core simulations with the IGSM.

#### 3.1 Policy Design

Given the potential interest in understanding the benefits of mitigation, we necessarily considered a “no policy” scenario (Reference, or REF) that would then be the basis for comparison of any mitigation scenarios. A set of Representative Concentration Pathway (RCP) scenarios have been developed in support of the Intergovernmental Panel on Climate Change as described in van Vuuren *et al.* (2011). The RCPs were defined in terms of total radiative forcing from preindustrial from emissions of anthropogenic greenhouse substances including both long-lived GHGs, aerosols and tropospheric ozone but excluding effects of land cover change, jet contrails, and other smaller contributors. A total of 4 RCPs were defined where radiative forcing would not exceed 2.6, 4.5, 6 and 8.5 Watts per meter squared ( $W/m^2$ ). Much of the international negotiations are focused on staying below  $2^\circ C$  of warming from preindustrial. To have a reasonable chance of staying at that level would require the most stringent RCP2.6. That said there is considerable question as to whether such a target is feasible given the lack of significant progress in developing an international agreement to limit greenhouse gases.

Most analyses that attempt to represent such a scenario either relax the requirement to allow for overshoot with gradual return to the lower level, or require some type of negative emission technology. Given the unlikelihood of reaching this goal, we focused on a scenario of stabilization

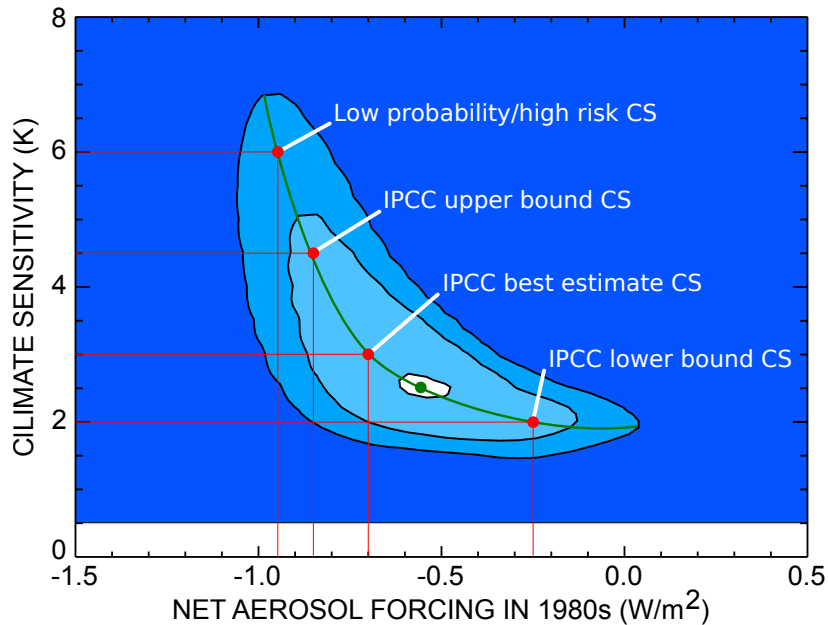
at  $4.5 \text{ W/m}^2$  and then constructed a  $3.7 \text{ W/m}^2$  scenario, referred to subsequently as POL4.5 and POL3.7, respectively. While not among the RCP family, it might be considered a somewhat more realistic scenario than RCP2.6, and allows a comparison of what is gained from making the extra effort to get from POL4.5 to POL3.7. While there are many issues that arise in estimating an optimal mitigation trajectory (see e.g., Jacoby, 2004) such optimality is where the marginal benefit equals the marginal cost. The differences between POL4.5 and POL3.7 provide something closer to a marginal benefit. In contrast to RCPs, where each scenario is developed by a different modeling group (and as such some aspects of the scenarios are not compatible, such as, for example, land-use emissions), an advantage of our approach is that all scenarios are constructed with a set of consistent interactions between population growth, economic development, energy and land system changes and the resulting emissions of GHGs, aerosols, and air pollutants.

Another potentially important element of the scenario design is how the policy is implemented. One might hope to represent a realistic policy design, however, actual policies being implemented by countries today are not close to achieving POL3.7 or even POL4.5. For example, Paltsev *et al.* (2012) estimate that the Copenhagen-Cancun-Durban international agreement would lead to about  $9.0 \text{ W/m}^2$  by 2100. Hence current policies provide no guidance for what would be needed to achieve these tighter targets. To have any chance of achieving them the policy measures need to be universal, including essentially all countries, and cover all greenhouse gases. And the policies need to be effective. Other important elements of policy design are which countries bear the cost burden of reducing emissions as well as the timing of emissions reduction. While there are many schemes to distribute the burden, such as per capita emissions targets and the like, these often have relatively perverse equity effects (see e.g., Jacoby *et al.*, 2009). As a result, we chose a simple policy design—a uniform global carbon tax, constant in net present value terms, where each region collects and recycles the revenue internally to its representative agent. Through an iterative procedure we determine the tax rate needed to achieve the target, and we apply the tax to all GHG emissions where Global Warming Potential (GWP) indices adjust the tax level for different greenhouse gases.

We exclude  $\text{CO}_2$  emissions from land-use change from the tax (see Reilly *et al.*, 2012, for the implications of extending a carbon tax to land use). This formulation of the tax policy means that each region bears the direct cost of its abatement activities but may benefit or lose from effects transmitted through trade. A uniform global tax that is constant in net present value terms, by equating marginal cost of reduction across space and time would, under some ideal conditions lead to a least-cost solution. However, interaction with other distortions and externalities could mean there are even more efficient solutions, e.g., if tax revenue were used to reduce other distortionary tax rates or there were other benefits of reduced conventional pollutants. Similarly, if one designed the tax strategy in consideration of existing energy taxes and policies the economic cost of the policy could be lower. A uniform global tax policy is far more efficient than existing policies because they are highly differentiated among sectors and regions, and often use multiple policy instruments that lead to wide disparities in marginal cost and suffer from leakage.

### 3.2 Climate Parameter Choice

To represent uncertainty in earth system response to changing concentrations of greenhouse gases and aerosols, the climate sensitivity of the atmospheric model was altered to span the range given by the Intergovernmental Panel on Climate Change (IPCC), with an additional low probability/high risk value. The ocean heat uptake rate in all simulations lies between the mode and the median of the probability distribution obtained with the IGSM using optimal fingerprint diagnostics similar to Forest *et al.* (2008). This corresponds to an effective vertical eddy diffusivity of  $0.5 \text{ cm}^2/\text{s}$ . The four values of climate sensitivity (CS) considered are 2.0, 3.0, 4.5 and  $6.0^\circ\text{C}$ , which represent respectively the lower bound (CS2.0), best estimate (CS3.0) and upper bound (CS4.5) of climate sensitivity based on the Fourth Assessment Report of the Intergovernmental Panel on Climate Change (IPCC, 2007b), and a low probability/high risk climate sensitivity (CS6.0). The associated net aerosol forcing was chosen to ensure a good agreement with the observed climate change over the 20<sup>th</sup> century. This is achieved based on the marginal posterior probability density function with uniform prior for the climate sensitivity-net aerosol forcing (CS-Fae) parameter space shown in **Figure 1**. The net aerosol forcing is chosen to provide the same transient climate response as the median set of parameters of the CS-Fae parameter space. The values are  $-0.25 \text{ W/m}^2$ ,  $-0.70 \text{ W/m}^2$ ,  $-0.85 \text{ W/m}^2$  and  $-0.95 \text{ W/m}^2$  for, respectively, CS2.0, CS3.0, CS4.5 and CS6.0.



**Figure 1.** The marginal posterior probability density function with uniform prior for the climate sensitivity-net aerosol forcing (CS-Fae) parameter space. The shading denotes rejection regions for a given significance level—50%, 10% and 1%, light to dark, respectively. The positions of the red and green dots represent the parameters used in the simulations presented in this study. The green line represents combinations of climate sensitivity and net aerosol forcing leading to the same transient climate response as the median set of parameters (green dot).



#### 4. ECONOMIC AND ENERGY PROJECTIONS

In EPPA, key assumptions about population and labor growth interact to endogenously determine the rates of growth in each region and in the world. These assumptions concern: growth in productivity of labor, land and energy; the exhaustible and renewable resource base; technology availability/cost; and policy constraints. More rapid productivity growth leads to higher rates of output, savings, investment and GDP growth. More rapid growth will deplete resources faster and press against available renewable resources and these pressures will retard growth. Policy constraints that limit the use of available fossil resources will also tend to slow growth. However, the version of the model used here does not include any climate and environmental feedbacks on the economy. Given space limitations, we provide a high level overview of the key results. Detailed tables of results for each scenario are provided in the Supplemental Material.

GDP growth varies by region and policy scenario (**Table 1**). The 2005–2050 growth is benchmarked to historical data and so includes the recent recession, but by 2015 we assume rates of productivity growth similar to the past 30 years. Slowing population and labor growth and gradual slowing of labor productivity over time leads to somewhat slower growth in all regions in the second half of the century. Growth is generally more rapid in lower income than higher income countries, assuming some catch-up. Growth in POL4.5 is slowed by about 0.2% to as much as 0.6% per year depending on the region compared with No Policy. Going from the POL4.5 to POL3.7 cuts another 0.1 to 0.2%. EPPA models international trade, and so solves in market exchange rates. An alternative is to convert GDP to purchasing power parity (PPP). Using PPP would value upward the level of GDP in many of the lower income countries, but would not change the growth rate. Such revaluation would give more weight to lower income countries and so would tend to raise the world average. In later figures we aggregate these regions to include the USA, Other Developed, Other G-20, and Rest of the World. Countries and regions included in these regions are defined in Table 1. The G-20 is the largest 20 economies of the world. Our Other G-20 group—large economies not among the traditional “developed” economies—is an approximation given the level of aggregation in the EPPA model: South Africa, Turkey and Saudi Arabia are among the G-20 but not in our grouping because they are aggregated into other large regions in EPPA. High Income Asia includes Korea and Indonesia, among the G-20, but also several other smaller economies (see Table 1 and Paltsev *et al.*, 2012).

The most important results in terms of effects on climate are global greenhouse gas (GHG) emissions (**Figure 2**). Included are CO<sub>2</sub> emissions from fossil energy combustion, industry (i.e. primarily cement), and CH<sub>4</sub>, N<sub>2</sub>O, PFCs, HFCs, and SF<sub>6</sub>. CO<sub>2</sub> emissions from land are not included in this total but an estimate of global net emissions from human activity is included in the Supplemental Tables. The IGSM has an active terrestrial vegetation model that responds to climate and atmospheric CO<sub>2</sub>, an active ocean model that takes up CO<sub>2</sub>, and explicit chemistry, e.g., oxidizes CH<sub>4</sub> into CO<sub>2</sub>. We infer anthropogenic land use emissions given historical estimated fossil and industrial emissions, the modeled ocean and terrestrial vegetation response as the additional emissions needed to match the recent trends in observed concentrations. The IGSM also separately models natural sources of CH<sub>4</sub> (wetlands) and N<sub>2</sub>O (unfertilized soils), and how

**Table 1.** GDP Growth Rates: 2005–2050 and 2050–2100 under Reference and Policy Scenarios.

	REF		POL4.5		POL3.7	
	2005–2050	2050–2100	2005–2050	2050–2100	2005–2050	2050–2100
USA	2.5	1.7	2.3	1.6	2.2	1.6
<i>Other developed</i>						
Canada	2.6	1.9	2.3	1.7	2.2	1.6
Japan	1.4	1.0	1.1	0.9	1.1	0.9
Aus./N. Zealand	3.0	1.9	2.7	1.7	2.6	1.7
Europe <sup>a</sup>	1.9	1.7	1.6	1.5	1.5	1.5
<i>Other G-20</i>						
Mexico	2.9	2.4	2.6	1.9	2.4	1.7
Russia	2.5	2.0	2	1.5	1.8	1.4
High Inc. Asia <sup>b</sup>	3.4	2.4	3.2	2.0	3.0	1.8
China	5.7	1.9	5.3	1.6	5.2	1.3
India	5.3	2.6	4.9	2	4.5	1.5
Brazil	3.4	2.9	3.0	2.3	2.7	1.8
<i>Rest of the world</i>						
Other Eurasia <sup>c</sup>	3.4	2.0	2.8	1.6	2.6	1.4
Africa	3.6	2.6	3.3	2.0	3.1	1.5
Middle East	3.2	2.5	2.6	1.5	2.2	1.3
Latin America <sup>d</sup>	3.5	2.6	3.1	2.0	2.9	1.7
Other Asia <sup>e</sup>	4.5	2.6	4.0	2.0	3.5	1.4
World	2.8	2.0	2.5	1.7	2.4	1.5

<sup>a</sup> The EU-27 plus Norway, Switzerland, Iceland and Liechtenstein.

<sup>b</sup> Indonesia, Republic of Korea, Malaysia, Taiwan, the Phillipines, Singapore and Thailand.

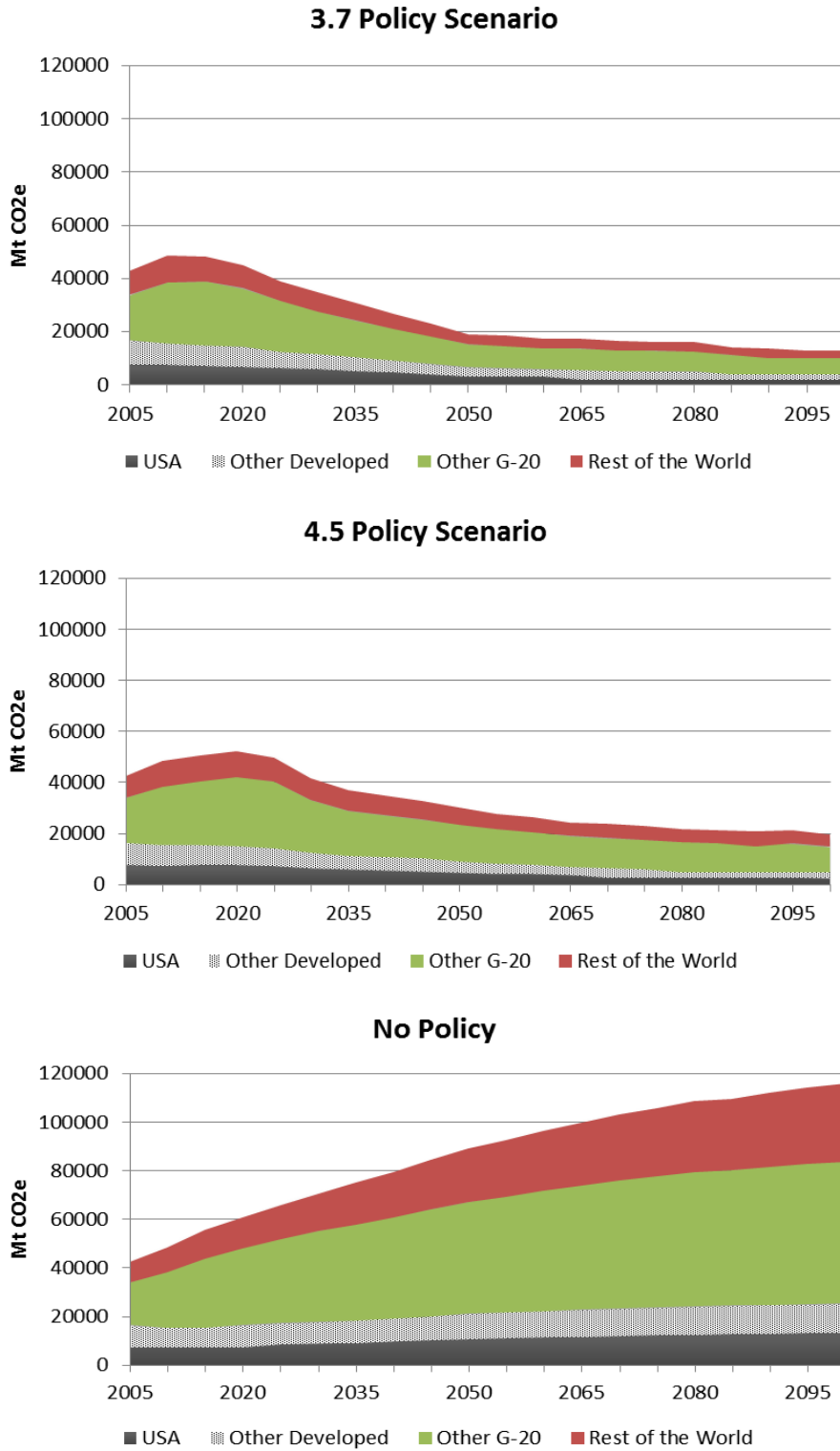
<sup>c</sup> Other Europe (e.g., Albania, Croatia, Turkey, Ukraine, Belarus) through Georgia, Armenia, and Azerbaijan to Turkmenistan, Uzbekistan, Khazakstan, Tajikistan and Kyrgyzstan.

<sup>d</sup> Less Brazil and Mexico.

<sup>e</sup> Other Asia region includes Vietnam, Cambodia, Bangladesh, Pakistan, Sri Lanka, Afghanistan, Nepal, Maldives, Brunei, Bhutan, Mongolia, Laos, Myanmar and North Korea.

such emissions respond to climate change. Amplified natural emissions due to climate change are not included in Figure 2. However, all of these changes are reflected in estimates of changes in concentrations, radiative forcing and temperature reported in the next section.

Emissions of other substances beyond the “Kyoto” gases are also important for the climate, either because of their direct radiative effect or, indirectly, as the result of atmospheric chemistry processes. EPPA projects emissions of SO<sub>2</sub>, CO, VOCs, BC, OC, and NH<sub>3</sub>. EPPA models multiple sources of each of these substances as both as co-products, with CO<sub>2</sub>, of the combustion of fossil fuels, and of other activities, many associated with agricultural practices and biomass burning. Coefficients of emissions per unit of activity vary by fuel (oil, coal, gas), by sector and technology, by region, and over time reflecting more attention to pollution reduction by different regions as they advance and develop. For those emissions directly associated with fuel



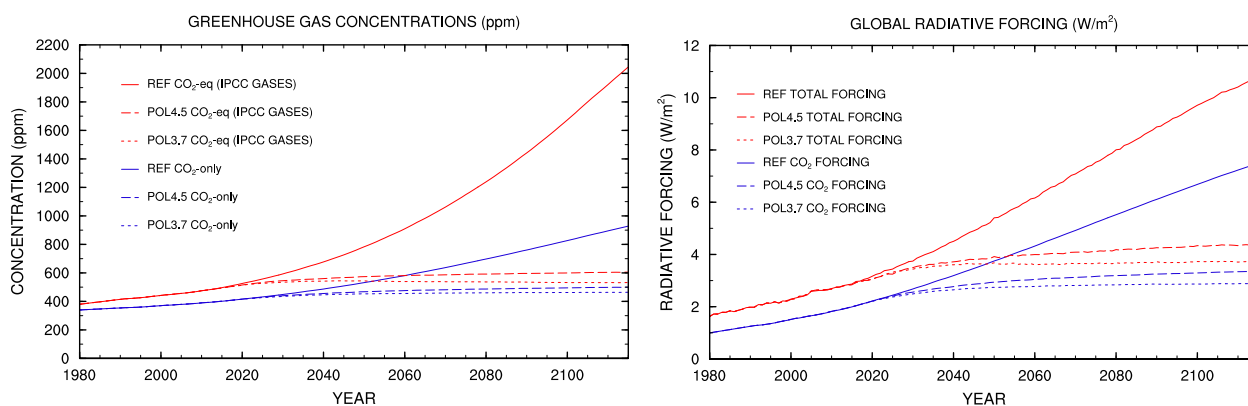
**Figure 2.** Anthropogenic emissions: CO<sub>2</sub> (fossil and industrial) CH<sub>4</sub>, N<sub>2</sub>O, HFCs SF<sub>6</sub> and PFCs Emissions (Ggr. of CO<sub>2</sub>-equivalent). See Table 1 for regions.

combustion, carbon policy has a strong ancillary effect (mostly beneficial reductions). This is less so for those emissions associated with biomass burning. In our projections (Supplemental Material) China is often the largest regional source of these pollutants because of its large and rapidly growing energy use, and limited pollution control. The exceptions are BC and OC where Africa is the largest source because of biomass burning. In No Policy  $\text{SO}_2$ , BC, and OC rise a bit initially but then fall, even though underlying fossil energy consumption is growing because we represent emissions coefficients as falling due to development and pollution policy. Emissions of  $\text{NO}_x$ , CO and VOCs continue to grow, as these have proved more difficult to control, although slower than fossil fuel use. In both CS4.5 and CS3.7, the existence of policies that affect fossil fuel use, and the technologies used to burn it, reduce or further reduce other pollutant emissions. This link is weakest for those pollutants, e.g., BC and OC, that are dominated by biomass burning, especially related to agricultural practices such as open savannah burning or land clearing.

## 5. GLOBAL EARTH SYSTEM IMPLICATIONS

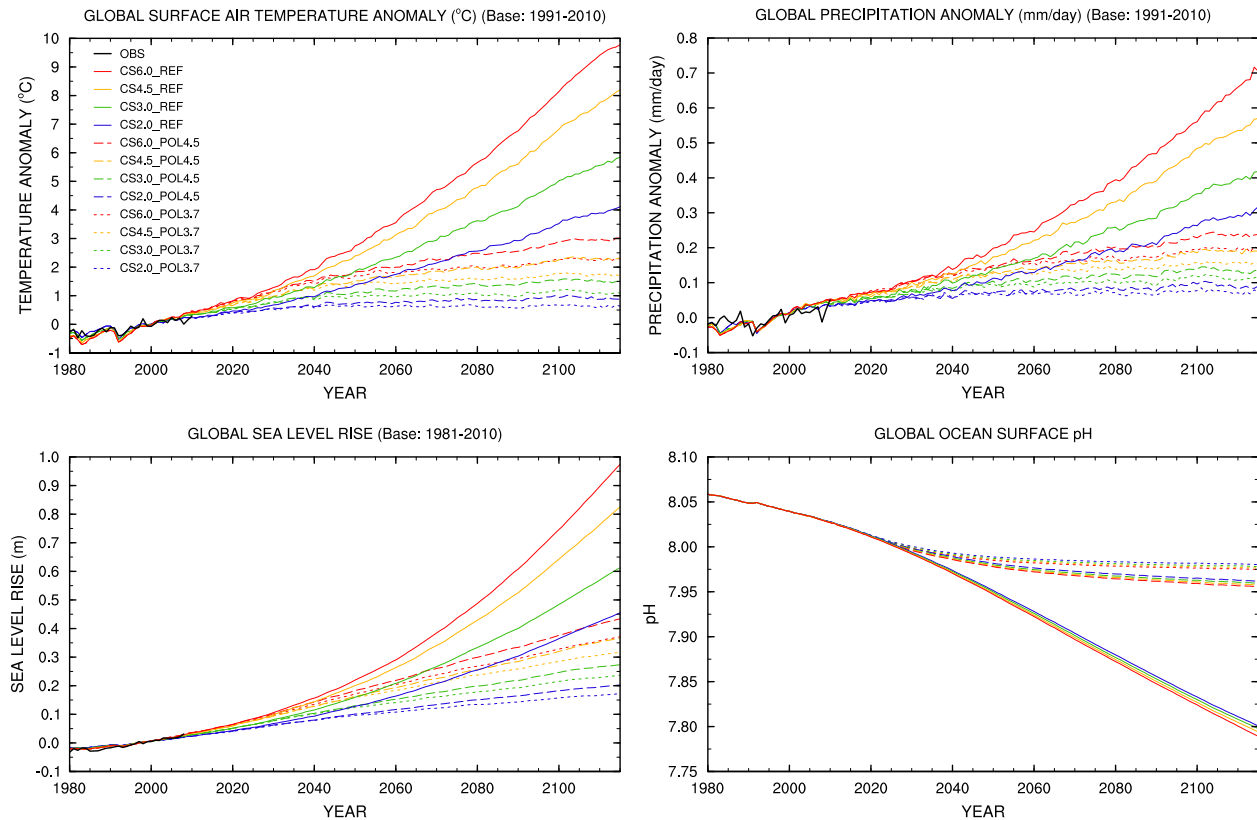
**Figure 3** shows GHG concentrations and global radiative forcing for the three emissions scenarios. Under the reference scenario, GHG concentrations reach 1750 ppm of  $\text{CO}_2$ -equivalent in 2100 and the total radiative forcing is  $10 \text{ W/m}^2$ . The large reduction in greenhouse gas concentration and global radiative forcing achieved by the two policies is clear. The implementation of POL4.5 leads to GHG concentrations of 600 ppm of  $\text{CO}_2$ -equivalent and a total radiative forcing of  $4.5 \text{ W/m}^2$  in 2100. Under POL3.7, GHG concentrations are at 500 ppm of  $\text{CO}_2$ -equivalent in 2100 and the total radiative forcing is  $3.7 \text{ W/m}^2$ .

**Figure 4** shows time series of global mean temperature, precipitation, sea level rise (including thermal expansion and the melting of glaciers, but excluding the melting of ice sheets) and ocean pH for the 12 core simulations with the IGSM. The difference in emissions scenarios between REF and even the more modest POL4.5 are quite large, and even more so for POL3.7. However,



**Figure 3.** Greenhouse gas concentrations for  $\text{CO}_2$ -only and for all IPCC gases (in ppm  $\text{CO}_2$ -equivalent) and global radiative forcing (in  $\text{W/m}^2$ ) for  $\text{CO}_2$  forcing and the total forcing (greenhouse gases, ozone, black carbon and sulfates). The solid, dashed and dotted lines represent, respectively, the simulations with the reference scenario, stabilization scenario at  $4.5 \text{ W/m}^2$  and the stabilization scenario at  $3.7 \text{ W/m}^2$ . The red lines are used for IPCC gases concentrations and total radiative forcing while the blue lines are used for  $\text{CO}_2$ -only concentrations and  $\text{CO}_2$ -only forcing.

through about 2040 the uncertainty in climate sensitivity tends to dominate the sea level rise and changes in temperature and precipitation. That is because emissions cuts of long-lived GHGs must accumulate before we see a large effect on various earth system outcomes. On the other hand, ocean pH is mainly affected by emissions scenarios because the oceans are absorbing about a third of the  $\text{CO}_2$  emitted into the atmosphere. As atmospheric  $\text{CO}_2$  concentrations increase, oceans become more acidic. After 2040, the policy scenarios begin to separate from the reference scenario. By 2080, there is clear separation: Even with the lowest climate sensitivity (CS2.0), the temperature in the reference scenario is above that of POL4.5 with the highest climate sensitivity (CS6.0). These scenarios quantify the general conclusion that in the nearer term the future climate will be largely controlled by natural variability and the climate response (the actual climate sensitivity of the earth system). Scientific research combined with the simple unfolding of the climate over the next decades will narrow this outcome. Policy choices will have relatively little



**Figure 4.** Time series of global mean surface air temperature and precipitation anomalies from the 1981–2010 base period, sea level rise (including thermal expansion and melting of glaciers, but excluding ice sheets) from the 1981–2010 base period and ocean pH for the 12 core simulations with the IGSM. The black lines represent observations, the Goddard Institute for Space Studies (GISS) surface temperature (GISTEMP, Hansen *et al.*, 2010), the 20<sup>th</sup> Century Reanalysis V2 precipitation (Compo *et al.*, 2011) and the Church and White Global Mean Sea Level Reconstruction (Church and White, 2011). The blue, green, orange and red lines represent, respectively, the simulations with a climate sensitivity of 2.0, 3.0, 4.5 and 6.0°. The solid, dashed and dotted lines represent, respectively, the simulations with the reference scenario, stabilization scenario at 4.5 W/m<sup>2</sup> and the stabilization scenario at 3.7 W/m<sup>2</sup>.

effect in the near term, but become the dominant factor by the second half of the century. Of course, this is a receding window; if we don't start to significantly change the current emissions path until 2030 or 2040, then we will not see a strong effect of those policies until very late in the century.

The reference scenario clearly takes the earth system into dangerous territory, even under the assumption of a low climate sensitivity, with temperature increases by the end of the century ranging from 3.5 to 8.5°C. Global precipitation increases range from 0.3 to 0.6 mm/day by 2100. Generally, the simulation with the largest increase in temperature also shows the largest increase in precipitation. Sea level rise, excluding the melting of ice sheets, shows a range of 40 to 80 cm in 2100. However, the range of sea level rise is likely underestimated because only one value of ocean heat uptake rate is considered in this study. And even if temperature increases halted where they are at the end of these simulations, gradual warming of the ocean would continue for hundreds of years, and with it continued sea level rise.

Finally, global mean ocean pH decreases to about 7.8 by the end of the simulations, compared to 8.05 during present-day, under the reference scenario. The reduced pH would strongly affect marine organisms and have economic implications for fisheries. Calcifying organisms like corals and mollusks are particularly vulnerable to changes in ocean acidity. In addition, corals are likely to cease to exist with pH around 7.7, which is reached in many areas of the ocean in our projections. Corals will also change in type and diversity with even small pH changes. Both POL4.5 and POL3.7 greatly reduce these risks, and current uncertainty in climate response dominates the difference in these policies through 2100. Of course, regardless of how uncertainty is resolved, lower GHG concentrations will lead to less climate change.

## **6. CONCLUSIONS**

We designed scenarios for impact assessment that explicitly address policy choices and uncertainty in climate response. These were designed as part of a broader climate impact assessment for the US, with the goal of making it possible to provide a more consistent picture of climate impacts on the US, and how those impacts depend on uncertainty in climate system response and policy choices. Clearly, the long-term risks, beyond 2050, of climate change can be strongly influenced by policy choices. In the nearer term, the climate we will observe is hard to influence with policy, and what we actually see will be strongly influenced by natural variability and the earth system response to existing greenhouse gases. In the end, the nature of the system is that a strong effect caused by policy, especially policy directed toward long-lived GHGs, will lag 30 to 40 years behind its implementation. Hence if we delay and make a choice only when climate sensitivity is revealed, we may find we are on a path that will take us into dangerous territory with little we can do to stop it, short of geoengineering.

## **Acknowledgements**

This work was partially funded by the US Environmental Protection Agency under Cooperative Agreement #XA-83600001. The Integrated Global System Model (IGSM) and its economic component, the MIT Emissions Predictions and Policy Analysis (EPPA) model, used in this

analysis is supported by a consortium of government, industry, and foundation sponsors of the MIT Joint Program on the Science and Policy of Global Change. For a complete list of sponsors, see: <http://globalchange.mit.edu>. The 20<sup>th</sup> Century Reanalysis V2 data was provided by the NOAA/OAR/ESRL PSD, Boulder, Colorado, USA, from their Web site at <http://www.esrl.noaa.gov/psd/>.

## 7. REFERENCES

- Anthoff, D. and R. S. Tol, 2009: The impact of climate change on the balanced growth equivalent: an application of FUND. *Environ. Resour. Econ.*, **43**(3): 351–367. doi:[10.1007/s10640-009-9269-5](https://doi.org/10.1007/s10640-009-9269-5).
- Church, J. A. and N. J. White, 2011: Sea-Level Rise from the Late 19th to the Early 21st Century. *Surv. Geophys.*, **32**(4-5): 585–602. doi:[10.1007/s10712-011-9119-1](https://doi.org/10.1007/s10712-011-9119-1).
- Compo, G. P., J. S. Whitaker, P. D. Sardeshmukh, N. Matsui, R. Allan, X. Yin, B. Gleason, R. Vose, G. Rutledge, P. Bessemoulin *et al.*, 2011: The Twentieth Century Reanalysis Project. *Quart. J. Roy. Meteor. Soc.*, **137**(654): 1–28. doi:[10.1002/qj.776](https://doi.org/10.1002/qj.776).
- Dutkiewicz, S., M. J. Follows and J. G. Bragg, 2009: Modeling the coupling of ocean ecology and biogeochemistry. *Global Biogeochem. Cycles*, **23**: GB4017. doi:[10.1029/2008GB003405](https://doi.org/10.1029/2008GB003405).
- Dutkiewicz, S., A. P. Sokolov, J. Scott and P. H. Stone, 2005: A Three-Dimensional Ocean-Seaice-Carbon Cycle Model and its Coupling to a Two-Dimensional Atmospheric Model: Uses in Climate Change Studies. MIT Joint Program on the Science and Policy of Global Change *Report 122*, 47 p. ([http://globalchange.mit.edu/files/document/MITJPSPGC\\_Rpt122.pdf](http://globalchange.mit.edu/files/document/MITJPSPGC_Rpt122.pdf)).
- Eby, M., A. Weaver, K. Alexander, K. Zickfeld, A. Abe-Ouchi, A. Cimadoribus, E. Crespin, S. Drijfhout, N. Edwards, A. Eliseev, G. Feulner, T. Fichefet, C. Forest, H. Goosse, P. Holden, F. Joos, M. Kawamiya, D. Kicklighter, H. Kienert, K. Matsumoto, I. Mokhov, E. Monier, S. Olsen, J. Pedersen, M. Perrette, G. Philippon-Berthier, A. Ridgwell, A. Schlosser, T. Schneider von Deimling, G. Shaffer, R. Smith, R. Spahni, A. Sokolov, M. Steinacher, K. Tachiiri, K. Tokos, M. Yoshimori, N. Zeng and F. Zhao, 2012: Historical and idealized climate model experiments: an EMIC intercomparison. *Clim. Past Discuss.*, **8**: 4121–4181. doi:[10.5194/cpd-8-4121-2012](https://doi.org/10.5194/cpd-8-4121-2012).
- Forest, C. E., P. H. Stone and A. P. Sokolov, 2008: Constraining climate model parameters from observed 20th century changes. *Tellus*, **60A**(5): 911–920. doi:[10.1111/j.1600-0870.2008.00346.x](https://doi.org/10.1111/j.1600-0870.2008.00346.x).
- Hansen, J., R. Ruedy, M. Sato and K. Lo, 2010: GLOBAL SURFACE TEMPERATURE CHANGE. *Rev. Geophys.*, **48**: RG4004. doi:[10.1029/2010RG000345](https://doi.org/10.1029/2010RG000345).
- Hope, C., 2013: Critical issues for the calculation of the social cost of CO<sub>2</sub>: why the estimates from PAGE09 are higher than those from PAGE2002. *Climatic Change*, **117**(3): 531–543. doi:[10.1007/s10584-012-0633-z](https://doi.org/10.1007/s10584-012-0633-z).
- IPCC, 2007a: *Climate Change 2007: Impacts, Adaptation and Vulnerability. Contribution of Working Group II to the Fourth Assessment Report of the Intergovernmental Panel on Climate Change*, Parry, M., O. Canziani, J. Palutikof, P. van der Linden and C. Hanson (eds.). Cambridge University Press, Cambridge, United Kingdom and New York, NY, USA, 976 p.

- IPCC, 2007b: *Climate Change 2007: Synthesis Report. Contribution of Working Groups I, II and III to the Fourth Assessment Report of the Intergovernmental Panel on Climate Change*, Pachauri, R. and A. Reisinger (eds.). Cambridge University Press, Cambridge, United Kingdom and New York, NY, USA, 104 p.
- IPCC, 2007c: *Climate Change 2007: The Physical Science Basis. Contribution of Working Group I to the Fourth Assessment Report of the Intergovernmental Panel on Climate Change*, Solomon, S., D. Qin, M. Manning, Z. Chen, M. Marquis, K. Averyt, M. Tignor and H. Miller (eds.). Cambridge University Press, Cambridge, United Kingdom and New York, NY, USA, 996 p.
- IWGSCC, 2010: *Technical Support Document: Social Cost of Carbon for Regulatory Impact Analysis Under Executive Order 12866*. Interagency Working Group on Social Cost of Carbon, United States Government: Washington DC, 50 p.
- Jacoby, H. D., 2004: Informing climate policy given incommensurable benefits estimates. *Global Environ. Chang.*, **14**(3): 287–297. doi:[10.1016/j.gloenvcha.2004.04.006](https://doi.org/10.1016/j.gloenvcha.2004.04.006).
- Jacoby, H. D., M. M. Babiker, S. Paltsev and J. M. Reilly, 2009: Sharing the burden of GHG reductions. In: *Post-Kyoto International Climate Policy: Implementing Architectures for Agreement*, J. E. Aldy and R. N. Stavins, (eds.), Cambridge University Press: Cambridge, United Kingdom, pp. 753–785.
- Marten, A. L., R. E. Kopp, K. C. Shouse, C. W. Griffiths, E. L. Hodson, E. Kopits, B. K. Mignone, C. Moore, S. C. Newbold, S. Waldhoff *et al.*, 2012: Improving the assessment and valuation of climate change impacts for policy and regulatory analysis. *Climatic Change*, pp. 1–6. doi:[10.1007/s10584-012-0608-0](https://doi.org/10.1007/s10584-012-0608-0).
- Mayer, M., C. Wang, M. Webster and R. G. Prinn, 2000: Linking local air pollution to global chemistry and climate. *J. Geophys. Res.*, **105**(D18): 22869–22896. doi:[10.1029/2000JD900307](https://doi.org/10.1029/2000JD900307).
- Monier, E., X. Gao, J. Scott, A. Sokolov and C. Schlosser, 2013a: A framework for modeling uncertainty in regional climate change. MIT Joint Program on the Science and Policy of Global Change *Report 244*, 16 p. ([http://globalchange.mit.edu/files/document/MITJPSPGC\\_Rpt244.pdf](http://globalchange.mit.edu/files/document/MITJPSPGC_Rpt244.pdf)).
- Monier, E., J. R. Scott, A. P. Sokolov, C. E. Forest and C. A. Schlosser, 2013b: An integrated assessment modelling framework for uncertainty studies in global and regional climate change: the MIT IGSM-CAM (version 1.0). *Geosci. Model Dev. Discuss.*, **6**: 2213–2248. doi:[10.5194/gmdd-6-2213-2013](https://doi.org/10.5194/gmdd-6-2213-2013).
- Nordhaus, W. D., 2008: *A question of balance: Weighing the options on global warming policies*. Yale University Press.
- NRC, 2011: *America's Climate Choices*. The National Academies Press: Washington DC.
- Paltsev, S., S. Dutkiewicz, V. Ekstrom, C. Forest, A. Gurgel, J. Huang, V. Karplus, E. Monier, J. Reilly, J. Scott, A. Slinn, T. Smith-Grieco and A. Sokolov, 2012: Energy and Climate Outlook 2012. MIT Joint Program on the Science and Policy of Global Change *Special Report*, 13 p. (<http://globalchange.mit.edu/files/document/Outlook2012.pdf>).



- Paltsev, S., J. M. Reilly, H. D. Jacoby, R. S. Eckaus, J. McFarland, M. Sarofim, M. Asadoorian and M. Babiker, 2005: The MIT Emissions Prediction and Policy Analysis (EPPA) Model: Version 4. MIT Joint Program on the Science and Policy of Global Change *Report 125*, 72 p. ([http://globalchange.mit.edu/files/document/MITJPSPGC\\_Rpt125.pdf](http://globalchange.mit.edu/files/document/MITJPSPGC_Rpt125.pdf)).
- Reilly, J., J. Melillo, Y. Cai, D. Kicklighter, A. Gurgel, S. Paltsev, T. Cronin, A. Sokolov and A. Schlosser, 2012: Using Land To Mitigate Climate Change: Hitting the Target, Recognizing the Trade-offs. *Environ. Sci. Technol.*, **46**(11): 5672–5679. doi:[10.1021/es2034729](https://doi.org/10.1021/es2034729).
- Schlosser, C. A., X. Gao, K. Strzepek, A. Sokolov, C. E. Forest, S. Awadalla and W. Farmer, 2012: Quantifying the Likelihood of Regional Climate Change: A Hybridized Approach. *J. Climate*. doi:[10.1175/JCLI-D-11-00730.1](https://doi.org/10.1175/JCLI-D-11-00730.1).
- Schlosser, C. A., D. Kicklighter and A. P. Sokolov, 2007: A global land system framework for integrated climate-change assessments. MIT Joint Program on the Science and Policy of Global Change *Report 147*, 60 p. ([http://globalchange.mit.edu/files/document/MITJPSPGC\\_Rpt147.pdf](http://globalchange.mit.edu/files/document/MITJPSPGC_Rpt147.pdf)).
- Sokolov, A. P., C. A. Schlosser, S. Dutkiewicz, S. Paltsev, D. Kicklighter, H. D. Jacoby, R. G. Prinn, C. E. Forest, J. M. Reilly, C. Wang, B. Felzer, M. C. Sarofim, J. Scott, P. H. Stone, J. M. Melillo and J. Cohen, 2005: The MIT Integrated Global System Model (IGSM) Version 2: Model Description and Baseline Evaluation. MIT Joint Program on the Science and Policy of Global Change *Report 124*, 40 p. ([http://globalchange.mit.edu/files/document/MITJPSPGC\\_Rpt124.pdf](http://globalchange.mit.edu/files/document/MITJPSPGC_Rpt124.pdf)).
- Sokolov, A. P., P. H. Stone, C. E. Forest, R. Prinn, M. C. Sarofim, M. Webster, S. Paltsev, C. A. Schlosser, D. Kicklighter, S. Dutkiewicz *et al.*, 2009: Probabilistic Forecast for Twenty-First-Century Climate Based on Uncertainties in Emissions (Without Policy) and Climate Parameters. *J. Climate*, **22**(19): 5175–5204. doi:[10.1175/2009JCLI2863.1](https://doi.org/10.1175/2009JCLI2863.1).
- van Vuuren, D. P., J. A. Edmonds, M. Kainuma, K. Riahi and J. Weyant, 2011: A special issue on the RCPs. *Climatic Change*, **109**(1): 1–4. doi:[10.1007/s10584-011-0157-y](https://doi.org/10.1007/s10584-011-0157-y).
- Wang, C., R. G. Prinn and A. Sokolov, 1998: A global interactive chemistry and climate model: Formulation and testing. *J. Geophys. Res.*, **103**(D3): 3399–3417. doi:[10.1029/97JD03465](https://doi.org/10.1029/97JD03465).
- Webster, M., A. P. Sokolov, J. M. Reilly, C. E. Forest, S. Paltsev, A. Schlosser, C. Wang, D. Kicklighter, M. Sarofim, J. Melillo *et al.*, 2012: Analysis of climate policy targets under uncertainty. *Climatic Change*, **112**(3): 569–583. doi:[10.1007/s10584-011-0260-0](https://doi.org/10.1007/s10584-011-0260-0).
- Zickfeld, K., M. Eby, K. Alexander, A. J. Weaver, E. Cresspin, T. Fichefet, H. Goosse, G. Philippon-Berthier, N. R. Edwards, P. B. Holden *et al.*, 2013: Long-term Climate Change Commitment and Reversibility: An EMIC Intercomparison. *J. Climate*. doi:[10.1175/JCLI-D-12-00584.1](https://doi.org/10.1175/JCLI-D-12-00584.1).

## REPORT SERIES of the MIT Joint Program on the Science and Policy of Global Change

FOR THE COMPLETE LIST OF JOINT PROGRAM REPORTS:  
<http://globalchange.mit.edu/pubs/all-reports.php>

197. **The Prospects for Coal-to-Liquid Conversion: A General Equilibrium Analysis** *Chen et al.* May 2011
198. **The Impact of Climate Policy on U.S. Aviation** *Winchester et al.* May 2011
199. **Future Yield Growth: What Evidence from Historical Data** *Gitiaux et al.* May 2011
200. **A Strategy for a Global Observing System for Verification of National Greenhouse Gas Emissions** *Prinn et al.* June 2011
201. **Russia's Natural Gas Export Potential up to 2050** *Paltsev* July 2011
202. **Distributional Impacts of Carbon Pricing: A General Equilibrium Approach with Micro-Data for Households** *Rausch et al.* July 2011
203. **Global Aerosol Health Impacts: Quantifying Uncertainties** *Selin et al.* August 2011
204. **Implementation of a Cloud Radiative Adjustment Method to Change the Climate Sensitivity of CAM3** *Sokolov and Monier* September 2011
205. **Quantifying the Likelihood of Regional Climate Change: A Hybridized Approach** *Schlosser et al.* October 2011
206. **Process Modeling of Global Soil Nitrous Oxide Emissions** *Saikawa et al.* October 2011
207. **The Influence of Shale Gas on U.S. Energy and Environmental Policy** *Jacoby et al.* November 2011
208. **Influence of Air Quality Model Resolution on Uncertainty Associated with Health Impacts** *Thompson and Selin* December 2011
209. **Characterization of Wind Power Resource in the United States and its Intermittency** *Gunturu and Schlosser* December 2011
210. **Potential Direct and Indirect Effects of Global Cellulosic Biofuel Production on Greenhouse Gas Fluxes from Future Land-use Change** *Kicklighter et al.* March 2012
211. **Emissions Pricing to Stabilize Global Climate** *Bosetti et al.* March 2012
212. **Effects of Nitrogen Limitation on Hydrological Processes in CLM4-CN** *Lee & Felzer* March 2012
213. **City-Size Distribution as a Function of Socio-economic Conditions: An Eclectic Approach to Down-scaling Global Population** *Nam & Reilly* March 2012
214. **CliCrop: a Crop Water-Stress and Irrigation Demand Model for an Integrated Global Assessment Modeling Approach** *Fant et al.* April 2012
215. **The Role of China in Mitigating Climate Change** *Paltsev et al.* April 2012
216. **Applying Engineering and Fleet Detail to Represent Passenger Vehicle Transport in a Computable General Equilibrium Model** *Karplus et al.* April 2012
217. **Combining a New Vehicle Fuel Economy Standard with a Cap-and-Trade Policy: Energy and Economic Impact in the United States** *Karplus et al.* April 2012
218. **Permafrost, Lakes, and Climate-Warming Methane Feedback: What is the Worst We Can Expect?** *Gao et al.* May 2012
219. **Valuing Climate Impacts in Integrated Assessment Models: The MIT IGSM** *Reilly et al.* May 2012
220. **Leakage from Sub-national Climate Initiatives: The Case of California** *Caron et al.* May 2012
221. **Green Growth and the Efficient Use of Natural Resources** *Reilly* June 2012
222. **Modeling Water Withdrawal and Consumption for Electricity Generation in the United States** *Strzepek et al.* June 2012
223. **An Integrated Assessment Framework for Uncertainty Studies in Global and Regional Climate Change: The MIT IGSM** *Monier et al.* June 2012
224. **Cap-and-Trade Climate Policies with Price-Regulated Industries: How Costly are Free Allowances?** *Lanz and Rausch* July 2012.
225. **Distributional and Efficiency Impacts of Clean and Renewable Energy Standards for Electricity** *Rausch and Mowers* July 2012.
226. **The Economic, Energy, and GHG Emissions Impacts of Proposed 2017–2025 Vehicle Fuel Economy Standards in the United States** *Karplus and Paltsev* July 2012
227. **Impacts of Land-Use and Biofuels Policy on Climate: Temperature and Localized Impacts** *Hallgren et al.* August 2012
228. **Carbon Tax Revenue and the Budget Deficit: A Win-Win Solution?** *Sebastian Rausch and John Reilly* August 2012
229. **CLM-AG: An Agriculture Module for the Community Land Model version 3.5** *Gueneau et al.* September 2012
230. **Quantifying Regional Economic Impacts of CO<sub>2</sub> Intensity Targets in China** *Zhang et al.* September 2012
231. **The Future Energy and GHG Emissions Impact of Alternative Personal Transportation Pathways in China** *Kishimoto et al.* September 2012
232. **Will Economic Restructuring in China Reduce Trade-Embodied CO<sub>2</sub> Emissions?** *Qi et al.* October 2012
233. **Climate Co-benefits of Tighter SO<sub>2</sub> and NO<sub>x</sub> Regulations in China** *Nam et al.* October 2012
234. **Shale Gas Production: Potential versus Actual GHG Emissions** *O'Sullivan and Paltsev* November 2012
235. **Non-Nuclear, Low-Carbon, or Both? The Case of Taiwan** *Chen* December 2012
236. **Modeling Water Resource Systems under Climate Change: IGSM-WRS** *Strzepek et al.* December 2012
237. **Analyzing the Regional Impact of a Fossil Energy Cap in China** *Zhang et al.* January 2013
238. **Market Cost of Renewable Jet Fuel Adoption in the United States** *Winchester et al.* January 2013
239. **Analysis of U.S. Water Resources under Climate Change** *Blanc et al.* February 2013
240. **Protection of Coastal Infrastructure under Rising Flood Risk** *Lickley et al.* March 2013
241. **Consumption-Based Adjustment of China's Emissions-Intensity Targets: An Analysis of its Potential Economic Effects** *Springmann et al.* March 2013
242. **The Energy and CO<sub>2</sub> Emissions Impact of Renewable Energy Development in China** *Zhang et al.* April 2013
243. **Integrated Economic and Climate Projections for Impact Assessment** *Paltsev et al.* May 2013