



University
of Glasgow

Lourenco, Filipe .C. et al. (2014) *Reduced LIMK2 expression in colorectal cancer reflects its role in limiting stem cell proliferation.* Gut, 63 (3). pp. 480-493. ISSN 0017-5749

Copyright © 2014 The Authors

<http://eprints.gla.ac.uk/82865/>

Deposited on: 14 March 2014

Enlighten – Research publications by members of the University of Glasgow
<http://eprints.gla.ac.uk>



OPEN ACCESS

ORIGINAL ARTICLE

Reduced LIMK2 expression in colorectal cancer reflects its role in limiting stem cell proliferation

Filipe C Lourenço,¹ June Munro,¹ Jennifer Brown,¹ Julia Cordero,¹ Rhoda Stefanatos,¹ Karen Strathdee,¹ Clare Orange,² Stephan M Feller,³ Owen J Sansom,¹ Marcos Vidal,¹ Graeme I Murray,⁴ Michael F Olson¹

► Additional material is published online only. To view please visit the journal online (<http://dx.doi.org/10.1136/gutjnl-2012-303883>).

¹Beatson Institute for Cancer Research, Glasgow, UK

²Department of Pathology, Division of Cancer Sciences and Molecular Pathology, Western Infirmary, Glasgow, UK

³Weatherall Institute of Molecular Medicine, John Radcliffe Hospital, University of Oxford, Oxford, UK

⁴Department of Pathology, Division of Applied Medicine, School of Medicine and Dentistry, University of Aberdeen, Aberdeen, UK

Correspondence to

Professor Michael F Olson, Beatson Institute for Cancer Research, Garscube Estate, Switchback Road, Glasgow G61 1BD, UK; m.olson@beatson.gla.ac.uk

Received 5 October 2012

Revised 12 February 2013

Accepted 24 March 2013

Published Online First

12 April 2013

ABSTRACT

Objective Colorectal cancer (CRC) is a major contributor to cancer mortality and morbidity. LIM kinase 2 (LIMK2) promotes tumour cell invasion and metastasis. The objectives of this study were to determine how LIMK2 expression is associated with CRC progression and patient outcome, and to use genetically modified *Drosophila* and mice to determine how LIMK2 deletion affects gastrointestinal stem cell regulation and tumour development.

Design LIMK2 expression and activity were measured by immunostaining tumours from CRC-prone mice, human CRC cell lines and 650 human tumours. *LIMK* knockdown in *Drosophila* or *Limk2* deletion in mice allowed for assessment of their contributions to gastrointestinal stem cell homeostasis and tumour development.

Results LIMK2 expression was reduced in intestinal tumours of cancer-prone mice, as well as in human CRC cell lines and tumours. Reduced LIMK2 expression and substrate phosphorylation were associated with shorter patient survival. Genetic analysis in *Drosophila* midgut and intestinal epithelial cells isolated from genetically modified mice revealed a conserved role for LIMK2 in constraining gastrointestinal stem cell proliferation. *Limk2* deletion increased colon tumour size in a colitis-associated colorectal mouse cancer model.

Conclusions This study revealed that LIMK2 expression and activity progressively decrease with advancing stage, and supports the hypothesis that there is selective pressure for reduced LIMK2 expression in CRC to relieve negative constraints imposed upon gastrointestinal stem cells.

INTRODUCTION

Colorectal cancer (CRC) is the third most common form of the disease in men and the second most common in women worldwide, and is a major contributor to cancer mortality and morbidity. Although the possibility exists that the CRC cells of origin may be derived from reprogrammed epithelial cells or transdifferentiated bone marrow-derived cells,¹ experimental evidence strongly supports the conclusion that intestinal crypt stem cells are the predominant source from which intestinal tumours emerge.^{2–5} Therefore, mutations or changes in gene expression observed in CRC may promote tumour initiation and growth through their effects on stem cell homeostasis.

Significance of this study

What is already known on this subject?

- LIM kinases are overexpressed in some tumour types.
- They contribute to regulation of actomyosin cytoskeletal dynamics, and hence play roles in cell motility, invasion and metastasis.
- The possible involvement of LIM kinases in CRC is unknown.

What are the new findings?

- LIMK2 expression and substrate phosphorylation progressively decrease with tumour stage.
- Deletion of dLIMK in *Drosophila* midgut results in stem cell proliferation and organ thickening.
- LIMK2 deletion increases mouse intestinal stem cell proliferation *in vitro*.
- In the context of a mouse model of colitis-associated CRC, *Limk2* deletion increases dysplasia and intestinal tumour size.

How might it impact on clinical practice in the foreseeable future?

- This study reveals that actomyosin cytoskeleton regulators such as LIMK2 may have patterns of expression in CRC distinct from other tumour types including breast and prostate, meaning that drugs targeting the cytoskeleton would be likely to have context-dependent effects.

The actomyosin cytoskeleton provides the structural underpinning that gives cells their shape and allows them to respond to changes in external physicochemical conditions. Importantly, dynamic reorganisation of cytoskeletal structures allows tumour cells to invade local tissue and ultimately metastasise to distant sites.⁶ As a result, a commonly held concept is that the expression of actomyosin regulatory proteins will increase during tumorigenesis and progression. However, given the multiple roles the actomyosin cytoskeleton plays in cell homeostasis, for example, in the apoptosis of human embryonic stem cells,⁷ an alternative possibility is that there may be selection for reduced expression or loss of actomyosin regulators in some cancers.



Open Access
Scan to access more
free content

To cite: Lourenço FC, Munro J, Brown J, *et al.* *Gut* 2014;**63**:480–493.

The LIM kinase family consists of two members; LIM kinase 1 (LIMK1) and LIM kinase 2 (LIMK2), which play central roles in RhoGTPase regulation of the actin cytoskeleton by phosphorylating cofilin proteins on Serine3 and inactivating their filamentous actin severing activity.⁸ LIMK1 and LIMK2 have 50% overall identity and 70% identity in their kinase domains, and are regulated through activation loop phosphorylation by RhoGTPase effector kinases including ROCK, PAK and MRCK.⁸ LIM kinases act as central network hubs in the regulation of cytoskeletal dynamics and have been proposed to be attractive potential cancer drug targets.⁹ Consistent with a positive role in cancer, expression of LIMK1 has been reported to be elevated in breast,¹⁰ malignant melanoma¹² and prostate¹³ tumours. However, there have been no studies reported to date that examined the expression of LIM kinases in CRC.

In this study, we found that LIMK2 expression is reduced in intestinal tumours from genetically modified mice, and in human CRC cell lines and tumours. Protein levels were progressively lower with advancing tumour grade, and reduced LIMK2 expression or substrate protein phosphorylation were each associated with shorter patient survival times. Increased LIMK2 promoter methylation was observed in tumours relative to patient matched normal tissue. Using genetic methods, we identified a repressive role for LIMK2 in intestinal stem cell proliferation in *Drosophila melanogaster* and in mice. Using a mouse model of colitis-associated CRC, we determined that LIM kinase 2 knockout (Limk2-KO) mice had increased intestinal tumour size and dysplasia. These data support the hypothesis that there is selective pressure for reduced LIMK2 expression in CRC to relieve negative constraints imposed on gastrointestinal stem cells.

MATERIALS AND METHODS

Cell culture

Mouse embryo fibroblast cells were isolated and cultured as described in D'Abaco and Olson.¹⁴ Intestinal epithelial cultures were isolated and cultured as described in Sato *et al.*¹⁵ Colorectal tumour cell lines were maintained, and cell lysates prepared, as described in Emaduddin *et al.*¹⁶

Promoter methylation

For de-novo methyltransferase inhibitor treatments, SW48 cells were plated in six-well plates at 2×10^5 per well. The following day, RG108 (100 μ M final), 5-azacytidine (5-Aza) (10 μ M final) or 1% dimethyl sulfoxide vehicle (v/v) were diluted in Dulbecco's modified eagle medium supplemented with 10% fetal calf serum and applied to cells for 48 h at 37°C. Genomic DNA from cell lines or tissues was prepared using a QIAamp DNA Mini Kit (Qiagen). Bisulphite conversion of genomic DNA was performed using the EZ DNA Methylation-Gold Kit (Zymo Research), followed by PCR using custom-designed primers (Invitrogen). PCR products were purified using the QIAquick PCR Purification Kit (Qiagen) and cloned using the 2.1-TOPO vector, before transformation into TOP10 *Escherichia coli* (Invitrogen). Blue/white screening was utilised to select positive colonies for DNA isolation and sequencing. Sequencing analysis was done using CLC Genomics V5.0 software.

Cell extraction and immunoblotting

Whole cell lysates were prepared and western blotted as described previously.¹⁷ Primary antibodies used were routinely used at 1:1000 for western blotting. Antibodies used were: cofilin (Cell Signaling Technology); LIMK1 (Cell Signaling Technology); LIMK2 (Santa Cruz Biotechnology, Inc.); α -tubulin (σ -Aldrich); phospho-cofilin (Cell Signaling

Technology); β -catenin (BD Biosciences); GFP (Abcam); Olfm4 (Abcam); Bmi1 (Cell Signaling Technology); Erk2 (gift from Chris Marshall, Institute of Cancer Research); Stat1 (Cell Signaling Technology). Alexa-Fluor680 (Molecular Probes) or IRDye800 (Rockland)-conjugated secondary antibodies were detected by infra-red imaging (Li-Cor Odyssey). Goat anti-mouse and goat anti-rabbit horseradish peroxidase-conjugated antibodies were from Pierce.

Histology and immunohistochemistry

Histology and immunohistochemistry were performed as described.¹⁸ Antibodies and working concentrations used for immunohistochemistry and immunofluorescence were the following: LIMK2, 1:200 (Santa Cruz Biotechnology, Inc); Phospho-Cofilin, 1:100 (Cell Signaling Technology); GFP, 1:250 (BD Biosciences); Texas-Red phalloidin, 1:250 (Molecular Probes, Invitrogen); β -catenin, 1:1000 (BD Biosciences). DAB-stained slides were imaged using a Hamamatsu Nanozoomer NDP slide scanner (Hamamatsu Photonics) and Digital Slide Server (Slidepath) software. For immunofluorescence images a Nikon A1R confocal microscope was used. For *Drosophila* immunofluorescence, tissues were dissected in phosphate-buffered saline (PBS) and fixed for 30–45 min in 4% para-formaldehyde. After fixation, samples were washed three times in PBS+0.1% Triton X-100 (PBST) and incubated in primary antibodies overnight at 4°C. Samples were then washed and subjected to secondary antibody staining for 2 h at room temperature followed by washing and mounting on Vectashield containing DAPI (Vector Laboratories, Inc). Primary and secondary antibodies were incubated in PBST+0.5% bovine serum albumin. The antibodies used were anti-phospho-Histone 3 (1:100 dilution, from Cell Signaling Technology), anti-GFP (1:2000 dilution from Abcam) and anti-Armadillo (1:3 dilution, developed by E. Wieschaus and obtained from the Developmental Studies Hybridoma Bank developed under the auspices of the National Institute of Child Health and Human Development and maintained by the University of Iowa, Department of Biology, Iowa City, IA, USA). Primary antibodies were visualised with Alexa 488, Alexa 532 or 594-conjugated secondary antibodies (Molecular Probes, Invitrogen).

Mice

Lgr5-EGFP-ires-Cre:ER-T2 (*Lgr5*>GFP) mice were described previously.¹⁹ *Limk2* gene-trap embryonic stem cells (sequence tag: RRE287; MMRRRC stock # 001883-UCD) were obtained from BayGenomics and used for blastocyst injections at the Beatson Institute using standard methods. Experimental mice are from a mixed C57BL/6J and 129/ola strain background. *Limk2*-KO mice are viable and born at Mendelian ratios (observed genotype at birth 49/183=26.8%) with no macroscopic abnormalities. All procedures were performed under appropriate licences and according to the UK Home Office guidelines.

Colitis-associated CRC (AOM+DSS)

On day 1, eight mice of each genotype (8–12-week-old littermates) were weighed and injected intraperitoneally with 12.5 mg/kg of azoxymethane (AOM) solution (Sigma-Aldrich). On day 6 the drinking supply was filled with dextran sodium sulfate (DSS) solution (DSS salt, MW36 000–56 000 Da, MP Biomedicals). On day 8 the drinking supply was refilled with DSS solution and on day 10 replaced with autoclaved water for 14 days. This cycle (5 days DSS plus 14 days water) was repeated two more times. DSS regimes were the following: cycle 1–1%; cycle 2–1.5%; cycle 3–1.5%. The mice were culled and dissected on approximately day 70. Tumour

volume was determined by assuming its quasi half-spherical shape $V = [(4/3\pi r^3)/2]$.

Lgr5-GFP⁺ stem cell FACS sorting, RNA purification and quantitative reverse transcriptase PCR

Crypt-villus organoids removed from matrigel by centrifugation or freshly isolated intestinal crypts were single-cell dissociated in TrypLE (Life Technologies) combined with DNase I (2000 U/ml) for 30 min at 37°C. Dissociated cells were passed through a 40 µm cell strainer and incubated with DAPI (1:500) for dead cell exclusion. DAPI⁻/GFP⁺-positive cells were analysed and sorted using a FACS Aria (BD Bioscience). Cells were sorted into full organoid culture medium plus Y27632 (10 µM). RNA was purified from approximately 5000 GFP⁺ cells using the Arcturus PicoPure RNA isolation kit (Applied Biosystems). Complementary DNA was synthesised using the Quantitect Reverse Transcription Kit (Qiagen). Quantitative reverse transcriptase (RT)-PCR primers for murine *Limk2*, *Lgr5*, *Olfm4*, *Ascl2*, *CD44*, *Bmi1*, *18s* and *Hprt* were acquired from Qiagen (Quantitect Primer Assay).

X-gal staining of mouse frozen sections

Tumour and adjacent normal tissue specimens from *Ah-CreER APC^{Fl/Fl} PTEN^{Fl/Fl} Limk2^{+/-}* mice were isolated, washed in PBS and mounted with OCT (Tissue-Tek, Sakura) and immediately frozen using Cryospray (CellPath Ltd). Twelve to 14 µm thickness sections were stained using the β-Gal Staining Kit (Invitrogen, Life Technologies) for 48 h at 37°C.

Flies

Fly cultures and incubations were carried out on standard molasses media, with food changes every 2 days, at 25°C with controlled 12 h light-dark cycles as described in.²⁰ For RNAi experiments, male *dLIMK IR 26 294* or *28 948* fly lines were crossed with virgin female *dicer;esg-gal4>GFP;gal80* flies. F1 females were collected for incubation at 29°C for 14 days to see effect of RNAi. All initial *Drosophila* stocks used were described previously and were obtained from the Bloomington *Drosophila* Stock Center.

Human tissue microarrays

A CRC tissue microarray (TMA) was constructed containing normal colon mucosa (n=50), primary (n=650) and metastatic CRC (n=285) as previously described in O'Dwyer *et al.*,²¹ Hope and Murray²² and Murray *et al.*²³ The metastases were all lymph node metastasis from the corresponding stage 3 (Dukes C) cancers. The histopathology of the cancers was reported as previously described,^{21 22} and clinicopathological details are summarised in supplementary table S1 (available online only). The authors confirm that all tissue samples were collected under strict institutional review board-approved guidelines/protocols with informed consent (National Research Ethics Service, North of Scotland ref. nos. 08/S0801/81 and 11/NS/0015). All collected human tissues were treated under strict confidentiality and according to appropriate applicable laws that protect the confidentiality of personal information. No names or any other identity information were revealed during the development of tissue arrays, nor to end users, and as a result are exempt from consideration by the Beatson Institute Committee on Human Subjects in Medical Research due to being anonymised and non-traceable. Cancer Research UK guidelines were followed in the handling and analysis of this material.

Statistical analysis

Unless indicated, statistical significance was determined by one way analysis of variance followed by Tukey's post-hoc tests. Data are shown as means±SD unless indicated. Box plots indicate medians bounded by quartiles with whiskers denoting 5th–95th percentiles. Survival analysis was performed with SPSS V19 using the method of Kaplan–Meier and the log-rank test to compare individual groups.

RESULTS

LIMK2 expression in human CRC

To determine whether LIMK2 protein levels were affected in CRC cell lines, we first validated the specificity of an antibody that recognises both LIMK2a and LIMK2b variants¹⁷ by western blotting lysates from wild-type *Limk2^{+/-}* and *Limk2^{-/-}* mouse embryo fibroblasts (figure 1A; non-specific band denoted by*). Western blotting lysates from a panel of CRC cell lines revealed that expression of LIMK1, ERK2 and the LIM kinase substrate cofilin were relatively constant, while LIMK2 expression was variable in numerous cell lines (figure 1B). LIMK2 expression in HCT116 and SW48 cells was lower compared to normal human colon tissue (figure 1C) on a protein lysate mass/mass basis (first and second vs third lane) or when normalised to α-tubulin levels (vs fourth lane). To determine whether epigenetics might be influencing LIMK2 expression, we chose SW48 cells as an exemplar and treated them with the de-novo methyltransferase inhibitors RG108 or 5-Aza.²⁴ Both treatments showed elevated LIMK2 levels within 48 h (figure 1D). Sequencing of bisulfite converted genomic DNA revealed methylation of the 7 CpG islands (positions indicated by vertical red lines in the figure 1D line diagram) in the *LIMK2a* promoter (−629 to −541 relative to the start of transcription) and the seven CpG islands in the *LIMK2b* promoter (+104 to +314) that were reduced by 5-Aza treatment (figure 1D, pie charts represent results from 10 independent DNA isolates). We next analysed *LIMK2* gene expression from CRC microarray datasets obtained using Oncomine.²⁵ There were statistically significant decreases in *LIMK2* expression in adenocarcinoma samples from caecum, colon, colon mucinous, rectal, rectal mucinous and rectosigmoid tissue relative to normal colon tissue (figure 1E; left side;²⁶ right side).²⁷ *LIMK2* gene expression was also significantly lower in lamina propria or epithelial adenomas and carcinomas relative to matched normal cells that had been separated by laser capture microdissection from normal, adenoma and carcinoma samples²⁸ (figure 1F). Similarly, *LIMK2* expression was significantly lower in carcinomas relative to normal colorectal samples in two independent studies (figure 1G;²⁸ right side).²⁹ These results indicate that *LIMK2* gene expression is frequently and significantly reduced in CRC.

We next examined *Limk2* levels in murine normal intestines and intestinal tumours from genetically modified cancer-prone mice. We observed *Limk2* expression throughout the intestines of wild-type mice, with highest levels at the base of crypts (figure 2A), which under higher magnification were found also to be marked by expression of GFP driven by the promoter of the stem cell marker *Lgr5*¹⁹ (figure 2B, upper panels). Similarly, in colon sections *Limk2* was found throughout with a degree of overlap with *Lgr5* expressing cells (figure 2B, lower panels). Importantly, these staining patterns were absent in mice homozygous for gene-trapped *Limk2* loci (figure 2A,B), thereby validating this antibody for use in immunohistochemistry. To determine whether *Limk2* deletion was associated with reduced signalling output, we stained sections with an antibody that

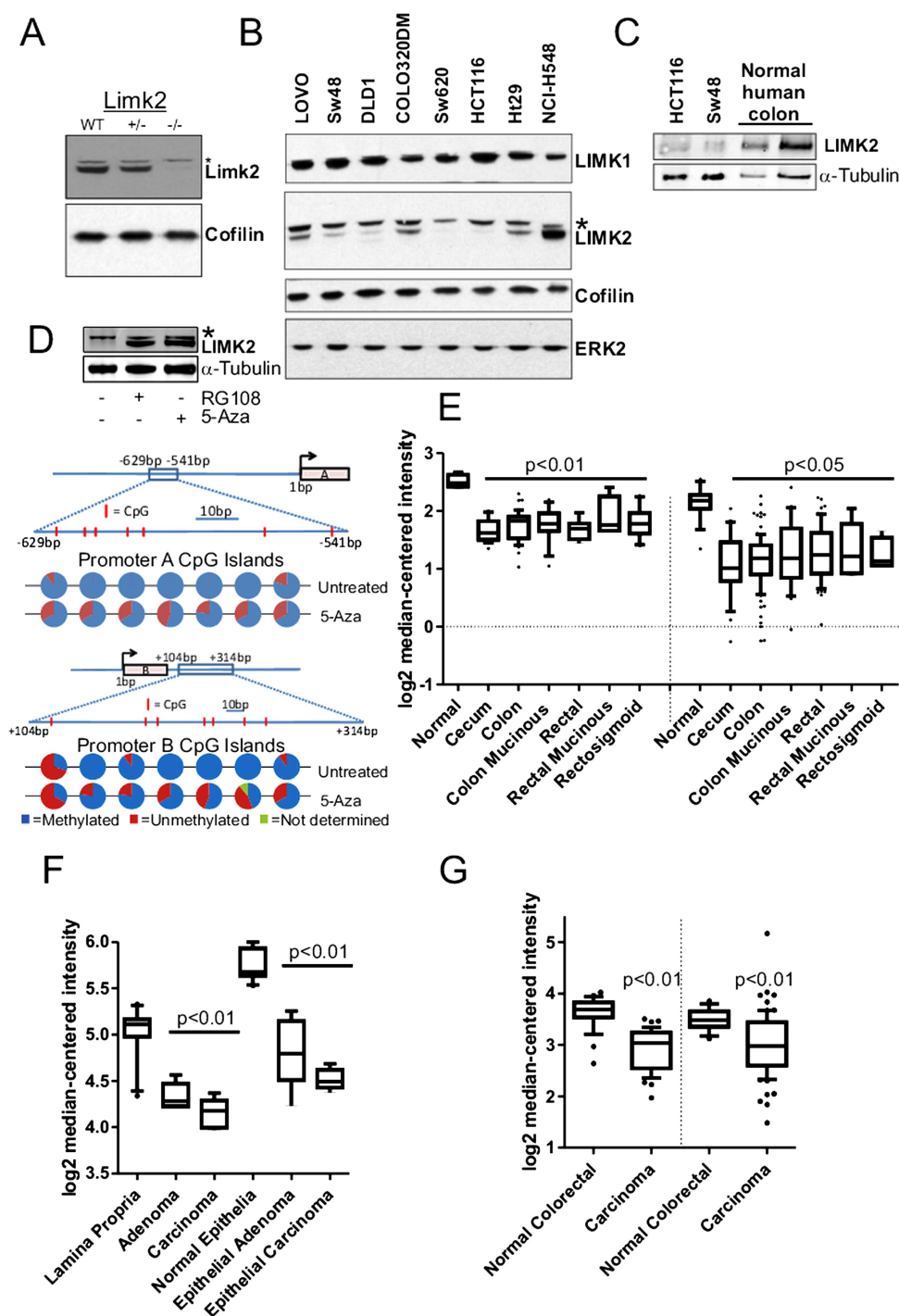


Figure 1 Limk2 expression in human colorectal cancers (CRC). (A) Western blot of mouse embryonic fibroblast cell lysates from indicated genotypes. *Non-specific band (B) Western blot of human CRC cell lysates. (C) Western blot of two CRC cell line and normal human colon lysates. Equivalent protein amounts were run in the three left lanes, equivalent α -tubulin amounts were run in the first two left lanes and last right lane. (D) Western blot of SW48 cell lysates following 48 h treatment with indicated de novo methyltransferase inhibitor. CpG methylation in LIMK2a and LIMK2b promoters without or with 5-azacytidine treatment. Line diagrams indicate position of CpG islands (red lines within boxed region) relative to the transcriptional start site for each promoter. Pie charts indicate proportion of methylation from multiple independent clones for each CpG island. (E) Log₂ median-centered LIMK2 messenger RNA expression in indicated normal versus adenocarcinoma tissue samples from; left side²⁶ right side.²⁷ (F) Log₂ median-centered LIMK2 mRNA expression in indicated microdissected normal lamina propria or epithelia, versus corresponding adenoma or carcinoma samples from Skrzypczak *et al.*²⁸ (G) Log₂ median-centered LIMK2 mRNA expression in normal versus carcinoma samples from left side,²⁸ right side.²⁹ LIMK2, LIM kinase 2.

detects phosphorylation of the Limk2 substrate cofilin, which we previously validated for cofilin protein and phosphorylation specificity.³⁰ Similar to Limk2, pCfl was localised throughout the intestinal cells with highest levels at the base of

the crypts, which was clearly reduced in the *Limk2*-KO sections (figure 2C).

We next examined Limk2 expression in intestinal tumours from the two-hit genetically modified mouse model that

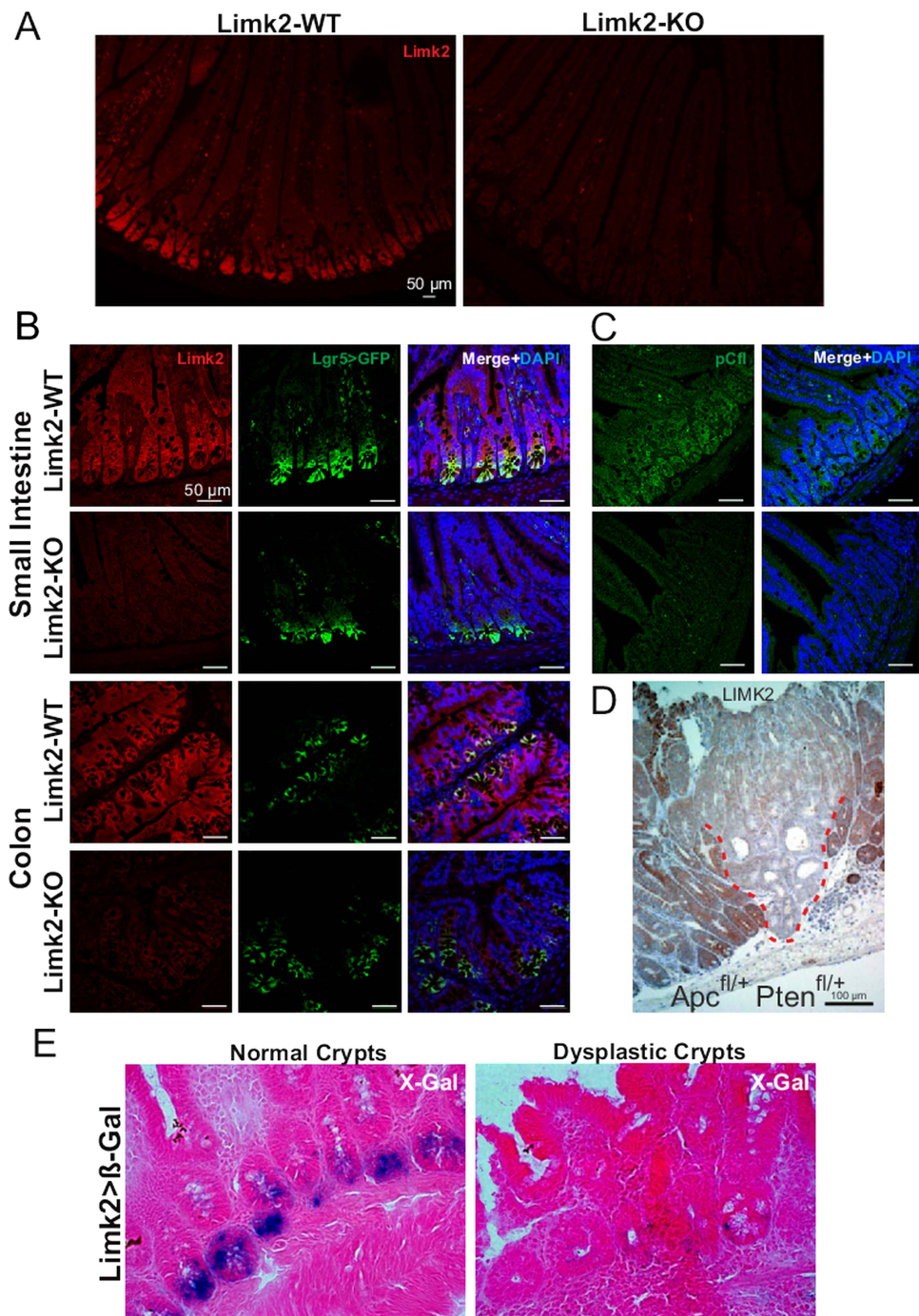


Figure 2 Limk2 expression in mouse intestine and tumours. (A) Limk2 expression (red) in intestine sections from wild-type (WT) or Limk2 knockout (KO) mice (B) Intestine or colon sections as indicated from WT or Limk2-KO mice that had been crossed with Lgr5>GFP mice were cut and stained for Limk2 (red) expression. Merged image also has DAPI staining of cell nuclei. (C) Intestine sections from WT or Limk2-KO mice were cut and stained for phosphorylated cofilin (pCfl; red). Merged image also has DAPI staining of cell nuclei. (D) Immunohistochemical analysis of Limk2 expression in intestinal tumour and adjacent normal tissue from *Ah-Cre:ER*, *Apc^{Fl/+}*, *Pten^{Fl/+}* mouse. (E) β -Galactosidase activity in normal and dysplastic crypts as detected by X-gal staining of frozen intestinal tissue sections from heterozygous *Limk2 gene-trap*, *Ah-Cre*, *Apc^{Fl/+}*, *Pten^{Fl/+}* mice.

requires stochastic loss of heterozygosity for *Apc* and *Pten*.³¹ Limk2 expression in *Ah-Cre:ER*, *Apc^{Fl/+}*, *Pten^{Fl/+}* mice was markedly lower in tumours than in surrounding normal tissue (figure 2D; tumour border outlined with red dashed line). Mice bearing one copy of a β -galactosidase gene-trap in the *Limk2* locus in the context of a *Ah-Cre:ER*, *Apc^{Fl/+}*, *Pten^{Fl/+}* genotype showed reduced β -galactosidase activity (visualised with X-gal) in dysplastic crypts compared to normal crypts, indicating inhibition of *Limk2* promoter transcriptional activity (figure 2E).

These data indicate that the apparently high expression of Limk2 in mouse intestinal cells becomes repressed, probably via promoter methylation and consequent inhibition, during tumorigenesis.

To determine how the patterns of LIMK2 expression changes are associated with oncogenesis and tumour progression, we used the LIMK2 antibody to stain representative human intestinal adenoma samples. Similar to normal tissue, LIMK2 expression was relatively high in low grade adenomas but markedly

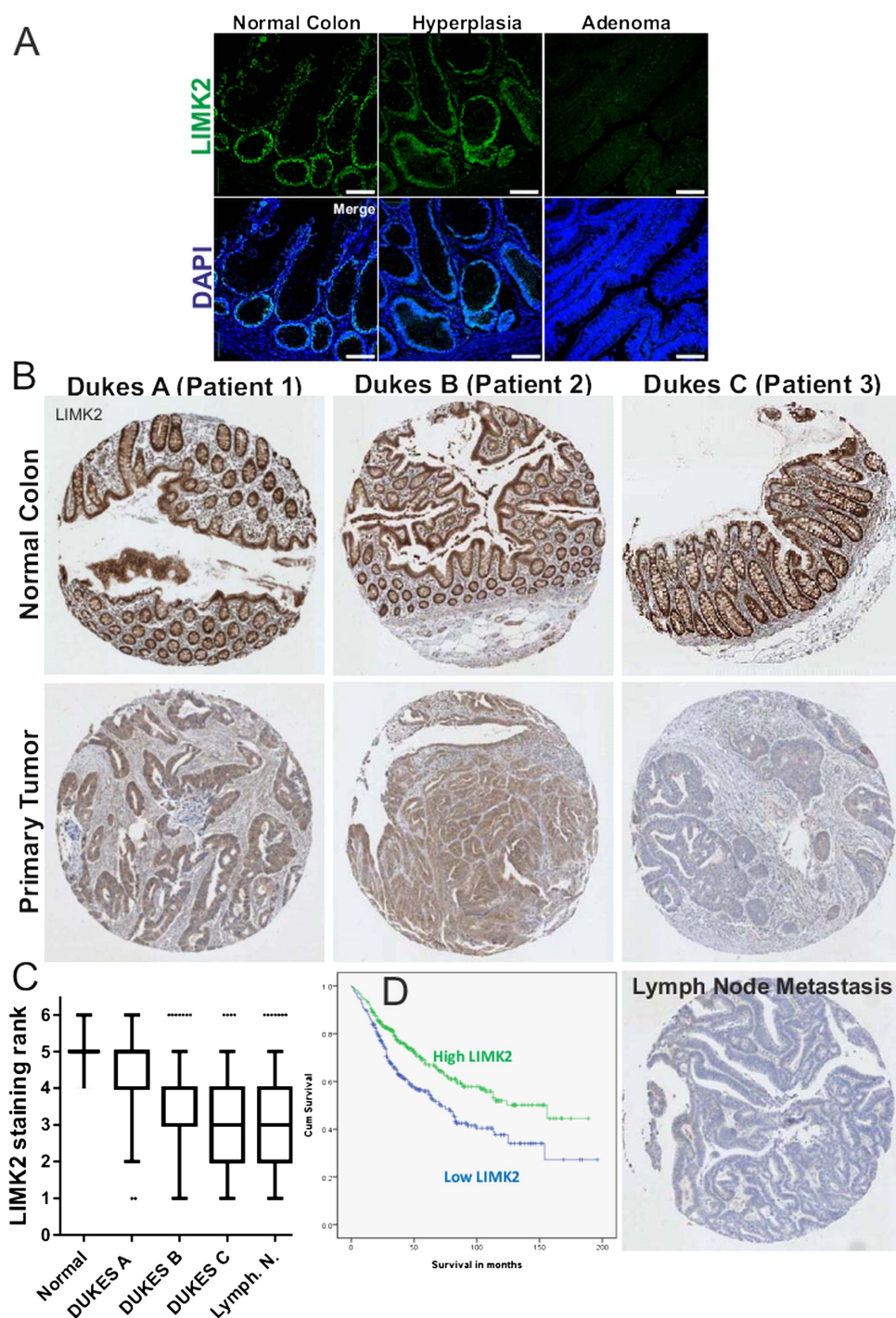


Figure 3 LIM kinase 2 (LIMK2) expression in human colorectal cancer (CRC) progression. (A) Immunohistochemical analysis of LIMK2 expression in human intestinal low grade and high grade adenomas. (B) Immunohistochemical analysis of LIMK2 expression in a tissue microarray (TMA) of human colorectal tumours and lymph node metastases. (C) LIMK2 staining intensities from TMA of human CRC. (D) Cumulative survival curves for high and low LIMK2 expressing patients.

decreased in high grade adenomas with low or high levels of dysplasia (figure 3A). We next stained a well-characterised TMA comprised of 650 patient samples of normal intestines and tissue from Dukes A to Dukes C tumours, as well as representative lymph node metastases.²¹ By assigning staining intensity scores from 1 (low) to 6 (high), we established that median staining intensity in normal intestines scored 5 with relatively little variation (figure 3B,C). LIMK2 expression progressively dropped in tumours, with each Dukes stage having significantly lower LIMK2 expression than its predecessor (figure 3B,C, see

supplementary table S2, available online only). LIMK2 expression in lymph node metastases was significantly lower than all stages except Dukes C (figure 3B,C, see supplementary table S2, available online only). To determine the association between LIMK2 expression and survival, we grouped staining categories into low (scores 1–3) or high (scores 4–6) and found that patients with low LIMK2 expression had significantly ($\chi^2=14.51$, $p<0.001$; log rank Mantel–Cox test) lower mean survival times (93.9 months) than high LIMK2 expressing patients (118.2 months) (figure 3D and see supplementary table

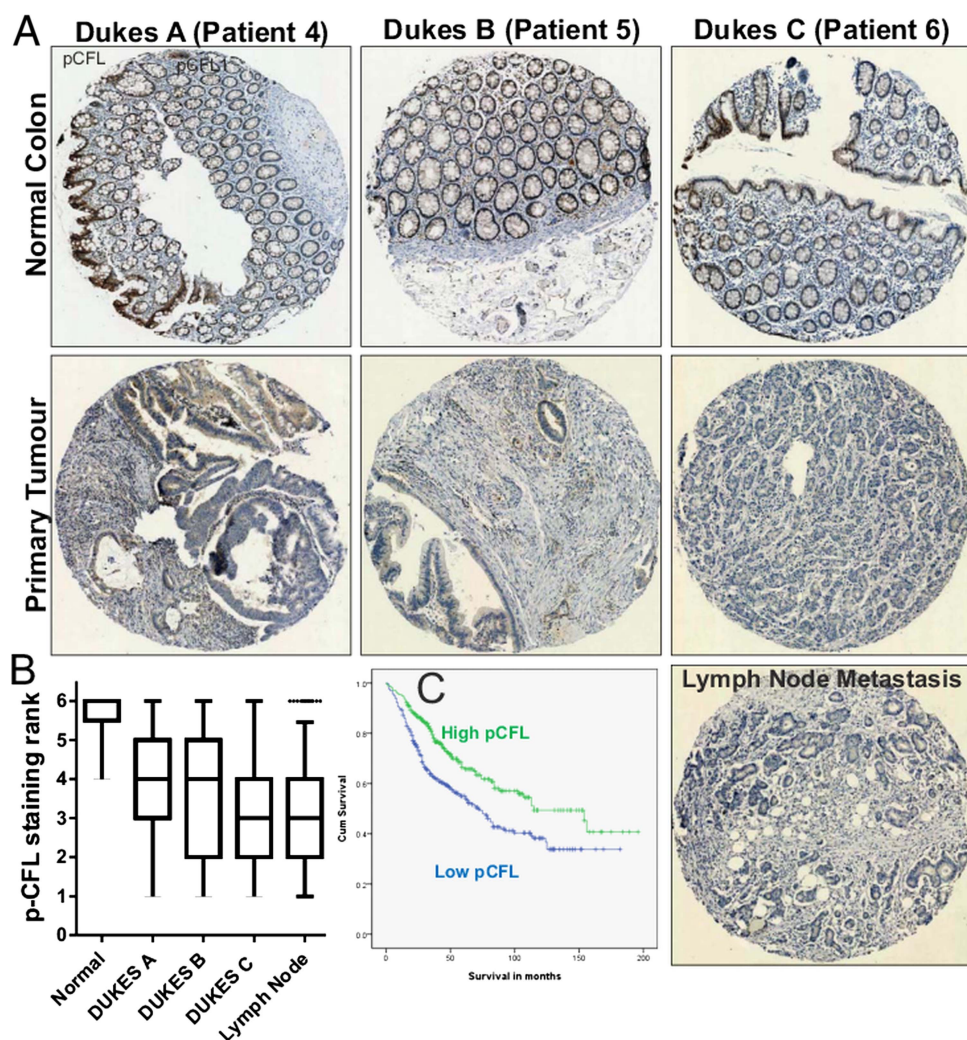


Figure 4 Phosphorylated cofilin in human colorectal cancer (CRC) progression. (A) Immunohistochemical analysis of pCFL expression in a tissue microarray (TMA) of human colorectal tumours and lymph node metastases. (B) pCFL staining intensities from TMA of human CRC. (C) Cumulative survival curves for high and low pCFL-expressing patients.

S3, available online only). When the median and mean survival times were estimated for each scoring rank, there was a clear trend from highest survival for patients scoring 6 to lowest survival for patients scoring 1 (see supplementary table S4, available online only). To determine whether reduced LIMK2 expression levels were associated with lower signalling output, we stained the TMA with the antibody that detects cofilin phosphorylation.³⁰ Levels of pCFL were significantly and progressively reduced relative to normal intestine and through each Dukes stage, with the exceptions that pCFL in Dukes B tumours did not differ from Dukes A, nor did pCFL in lymph node metastases differ from Dukes C tumours (figures 4A,B, see supplementary table S5, available online only). Mean patient survival was significantly ($\chi^2=14.81$, $p<0.001$; log-rank Mantel-Cox test) longer in high pCFL patients (119.3 months) than in low pCFL patients (91.2 months) (figure 4C and see supplementary table S6, available online only). When the median and mean survival times were estimated for each pCFL scoring rank, there was a clear trend from highest survival for patients scoring 6 to lowest survival for patients scoring 1 (see supplementary table S7, available online only). When examining on a patient by patient basis, there was an obvious correlation between LIMK2 expression and pCFL levels (figure 5A), which when compared using the SlidePath tissue image analysis system

positive pixel algorithm^{32,33} yielded a Pearson product-moment correlation coefficient of $r=0.59$ (figure 5B). When both LIMK2 and pCFL variables were analysed together, best patient mean survival time was for high LIMK2 and pCFL (118.9 months, 38.7% of total patients; figure 5C, see supplementary table S8, available online only), while worst mean survival time was for low LIMK2 and pCFL (84.6 months, 36.1% of total patients; figures 5C, see supplementary table S8, available online only). These data reveal clear patterns of reduced LIMK2 expression and activity in CRC, and a significant association with patient mortality.

LIMK2 promoter methylation in human tumours

The DNMT inhibitor-sensitive promoter methylation in a CRC cell line (figure 1D) suggested that a similar effect on promoter methylation might account for the reduction in LIMK2 expression in human tumours (figure 3). By isolating genomic DNA from six frozen tumour sections represented in the TMA along with matched normal tissue isolated from these patients, we were able to compare patterns of promoter methylation using bisulfite sequencing. The seven CpG islands in the *LIMK2a* and *LIMK2b* promoters were typically more methylated in tumours than matched normal tissues (results from one patient example depicted in figure 6A). When percentages of CpG island

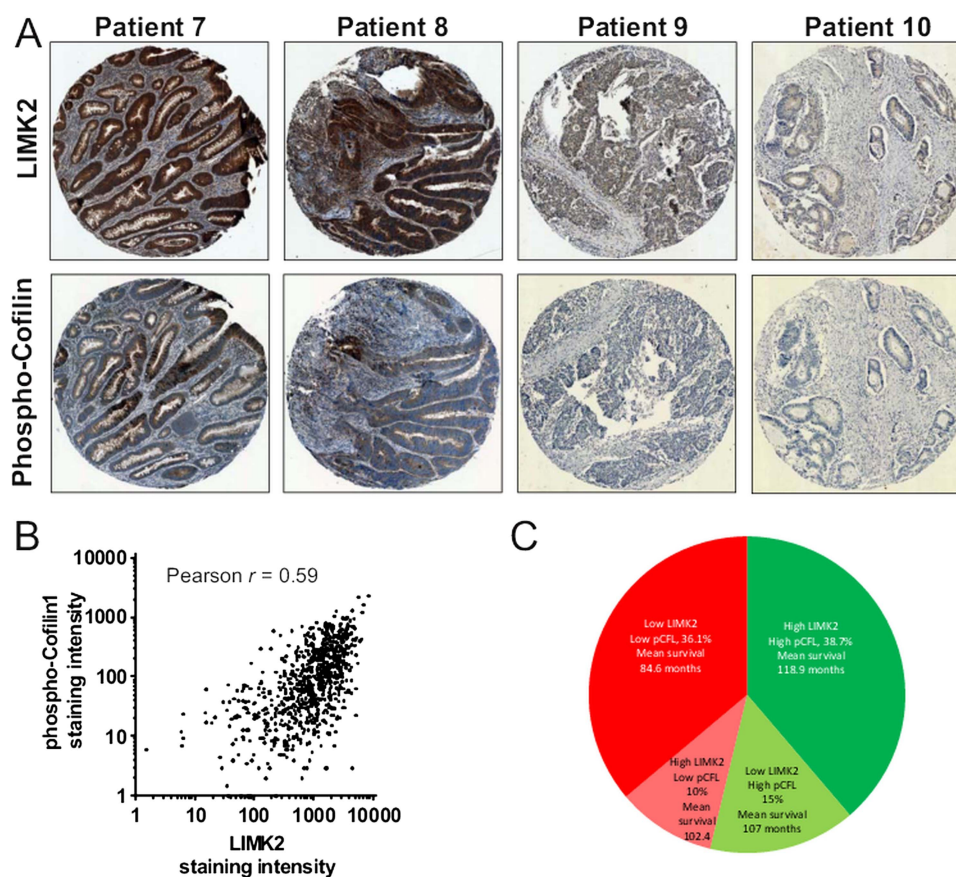


Figure 5 Association of LIM kinase 2 (LIMK2) expression and cofilin phosphorylation with patient outcomes. (A) Staining for LIMK2 and pCFL from paired patient sections. (B) LIMK2 and pCFL staining intensities were measured using SlidePath tissue image analysis system positive pixel algorithm.^{32 33} (C) Distribution of outcomes for all combinations of high and low LIMK2 and pCFL.

methylation for *LIMK2a* and *LIMK2b* promoters were compiled from six patients, there was significantly higher CpG methylation in tumours compared to matched normal tissues. These results support the conclusion that reduced LIMK2 expression in human CRC is due to increased promoter methylation.

Stem cell homeostasis in *D melanogaster* midgut

To understand how repression of LIMK2 expression might contribute to CRC, we used *D melanogaster* as a genetically tractable model system to examine the role of LIM kinase in gastrointestinal homeostasis.^{34–36} Importantly, experiments in the *Drosophila* posterior midgut, which is homologous to the mammalian intestine, have established that the orthologues of genes frequently mutated in human CRC (eg, APC, β -catenin, etc.) play important roles in the regulation of intestinal stem cell proliferation and tissue homeostasis.^{37–39} We used inverted-repeat RNA interference transgenes (RNAi) under the transcriptional control of the *Gal4/UAS* (upstream activating sequence) system⁴⁰ to reduce expression of the single *Drosophila* LIM kinase homologue (*dLIMK*) in stem cells expressing the transcription factor Gal4 driven by the *escargot* (*esg*) promoter.⁴¹ When *dLIMK* was knocked down by *esg-Gal4* driven expression of *UAS-dLIMK* RNAi in flies also carrying a *UAS-GFP* transgene to mark stem cells, it was readily apparent that, compared to control flies (wild-type), *dLIMK* knockdown significantly increased the proportion of GFP-expressing stem cells/progenitor cells (figure 7A,B) that were also demarcated by their relatively elevated expression of the β -catenin homologue Armadillo and Delta (figure 7C). This phenotype is consistent

with increased stem cell proliferation.⁴² To measure whether *dLIMK* reduction affected cell proliferation directly, fixed midguts were stained with phosphorylated Histone 3 (pH3) antibody as a marker of mitotic cells.⁴¹ While pH3 staining was very low to absent in midguts from wild-type flies under homeostatic conditions, *dLIMK* knockdown with two independent RNAi transgenes significantly ($p < 0.001$) increased the mean number of pH3-positive cells relative to the control genotype by more than fivefold (figure 7D,E). Co-staining with DAPI revealed patterns of condensed chromatin that supported the conclusion that pH3-positive cells were mitotic (figure 7D, right panels). Haematoxylin and eosin (H&E) stained cross-sections of paraffin-embedded posterior midguts from control flies were typical in their appearance, with a thin continuous cell layer surrounding a substantial lumen (figure 6D, left panel). In contrast, H&E stained midgut cross-sections from *UAS-dLIMK* RNAi flies were significantly thicker (figure 6D, right panel, figure 7G). These data indicate that in *Drosophila*, LIM kinase normally contributes to intestinal homeostasis by limiting the proliferation of stem cells.

LIMK2 deletion increases *Lgr5*-positive mouse intestinal stem cells

We next wished to determine whether there was a conserved role for *Limk2* in regulating mouse intestinal stem cell homeostasis. Using a method that allows for the isolation and long-term in-vitro propagation of self-renewing intestinal epithelial cells,¹⁵ we examined whether *Limk2* deletion affected proliferation of the *Lgr5*-positive stem cell population.¹⁹ When initially

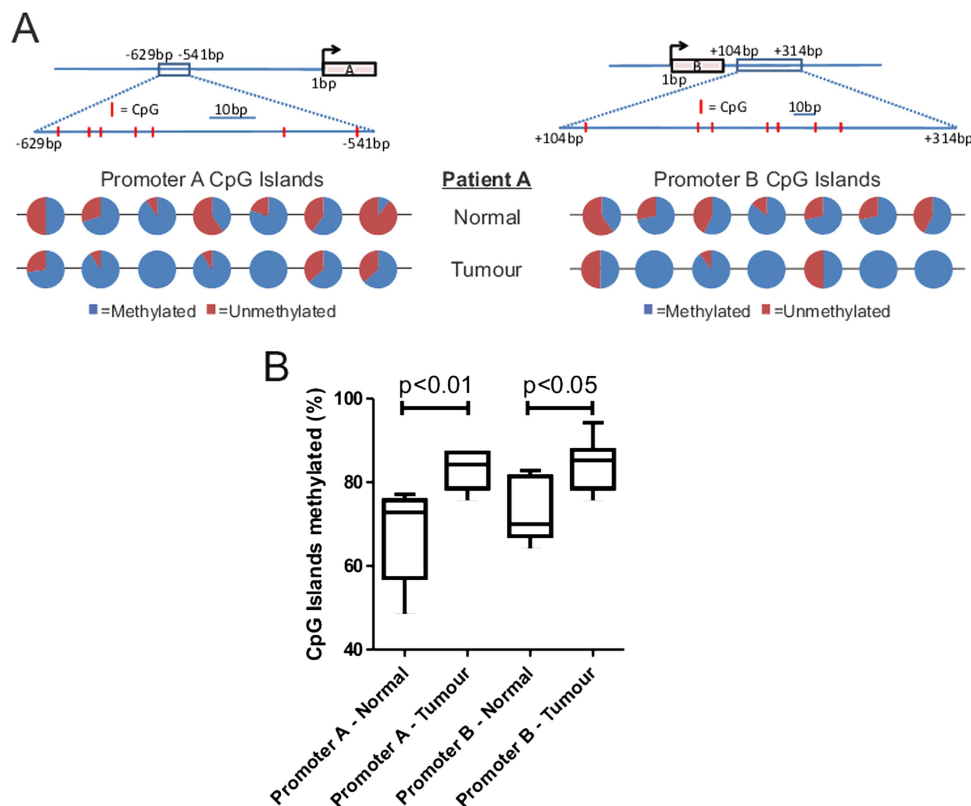


Figure 6 CpG methylation of *LIMK2a* and *LIMK2b* promoters in normal and tumour tissue. (A) Line diagrams indicate position of CpG islands (red lines within boxed region) relative to the transcriptional start site for each promoter. Pie charts indicate proportion of methylation from multiple independent clones for each CpG island in the genomic DNA of a representative patient. (B) Cumulative *LIMK2a* and *LIMK2b* promoter methylation data from matched normal and tumour tissue derived from six patients.

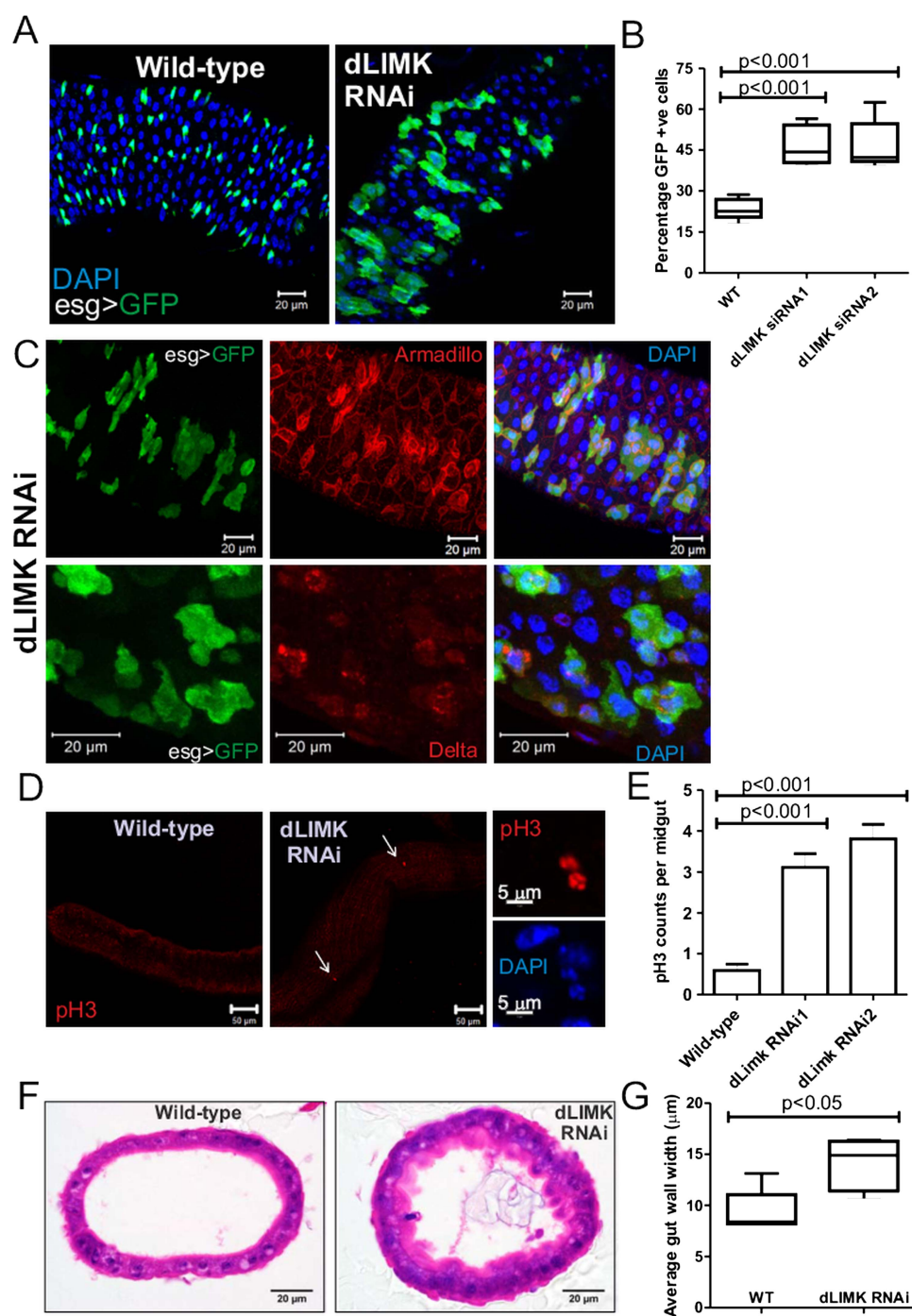
isolated from wild-type or *Limk2*-KO mice, intestinal epithelial cells showed no significant differences in the expression of various stem cell markers by western blotting or RNA microarray (see supplementary figure S1A,B, available online only), while the percentages of *Lgr5*>GFP-expressing cells also did not significantly differ (see supplementary figure S1C, available online only). However, when cells were cultured and passaged twice (every 7 days) in the presence of the proliferation-inducing growth factors epidermal growth factor, R-spondin1 and Noggin while embedded in three-dimensional Matrigel, there was a greater proportion of *Lgr5*>GFP-positive cells in the *Limk2*-KO organoids relative to wild-type as revealed by immunofluorescence microscopy (figure 8A; white arrows illustrating example GFP-positive cells). When cells from multiple independent organoids were dissociated and GFP-expressing cells counted by FACS (figure 8B, 10 000 events gated per condition), there was a significant ($p < 0.05$, Student's *t* test) increase in the percentage of *Lgr5*>GFP-positive stem cells in the *Limk2*-KO relative to wild-type (figure 8C). Western blotting lysates from multiple independent organoids corroborated the elevation of *Lgr5* driven GFP expression (indicating a greater proportion of GFP-positive cells) in the *Limk2*-KO (figure 8D). When GFP-positive cells were isolated and collected by flow cytometry, RT-PCR analysis revealed no significant differences in the expression of a number of stem cell markers including *Lgr5*, *Bmi1*, *Olfm4*, *CD44* and *Ascl2* between the wild-type and *Limk2*-KO, indicating equivalent levels of 'stemness' of the GFP-positive cells from each genotype (figure 8E). These results indicate that under conditions that strongly promote the proliferation of intestinal stem cells, the deletion of *Limk2* provides a competitive advantage relative to wild-type cells, giving rise to

an increased number of cells that are indistinguishable from their wild-type stem cell counterparts. By inference, epigenetic modifications to the *LIMK2* promoters that resulted in transcriptional repression could be positively selected for in human CRC due to the increased response of stem cells to inducers of proliferation.

Limk2 deletion promotes crypt dysplasia and tumour size in a mouse model of colitis-associated CRC

To test the effect of *LIMK2* deletion in a mouse model of colitis-associated CRC, 6–12-week-old mice were injected with a single dose of AOM (12.5 mg/kg), a potent carcinogen that induces the formation of O⁶-methyl-guanine, followed by three cycles of DSS administration in the drinking water (figure 9A). DSS administration will cause chronic inflammation, enhancing the incidence of AOM-induced tumours.⁴³ *Limk2*-deficient mice display a higher sensitivity to the AOM+DSS protocol with a significant increase in weight variation (figure 9B,C), reflecting the increased weight loss after the second and third DSS cycles. At the end of the treatment regimen, *Limk2*-KO mice had a marked increase in crypt-villus dysplasia and hyperplasia throughout the middle to distal colon (figure 9D). The caecum also displayed a more severe dysplastic and hyperproliferative phenotype, which is a less common feature of this tumour model (figure 9D,E). There was a marked trend towards a higher tumour incidence in *Limk2*-KO mice (figure 9F). The tumours were mostly adenomas with high β -catenin expression. The most striking and significant effects were on the histology and volume of the β -catenin-positive tumour foci in the *Limk2*-KO mice. *Limk2*-KO foci were significantly larger (figure 9G) and locally invasive, showing a higher grade of

Figure 7 Knockdown of *dLIMK* increases *Drosophila* intestinal stem cell proliferation and tissue thickening. (A) Fly intestinal stem and progenitor cells are marked by *esg*-driven GFP and endogenous Armadillo (red) expression, flies expressing *dLIMK* RNAi inverted repeat hairpins have increased stem cell numbers compared to the control genotype (wild-type; WT). (B) GFP/DAPI-positive cells were counted in five sections from five WT and two *dLIMK* siRNA fly lines. (C) Cells expressing *esg*>GFP were also marked by their elevated expression of Armadillo and Delta relative to neighbouring cells. (D) Proliferation determined by staining for the mitotic marker phosphorylated Histone 3 (pH3) in control (WT) or *dLIMK* targeting RNAi. Higher magnification images of pH3 and DAPI staining reveal the appearance of condensed chromosomes in these mitotic cells. (E). Quantification of pH3 numbers in flies expressing two independent *dLIMK* RNAi hairpins revealed statistically significant increases relative to control WT flies. (F) Cross-sections of fixed and H&E stained midguts from control (WT) or *dLIMK* RNAi-expressing flies. (G) Average gut wall widths determined from four separate measurements for each cross-section from five WT and *dLIMK* RNAi flies. * $p < 0.05$ by Student's *t* test.



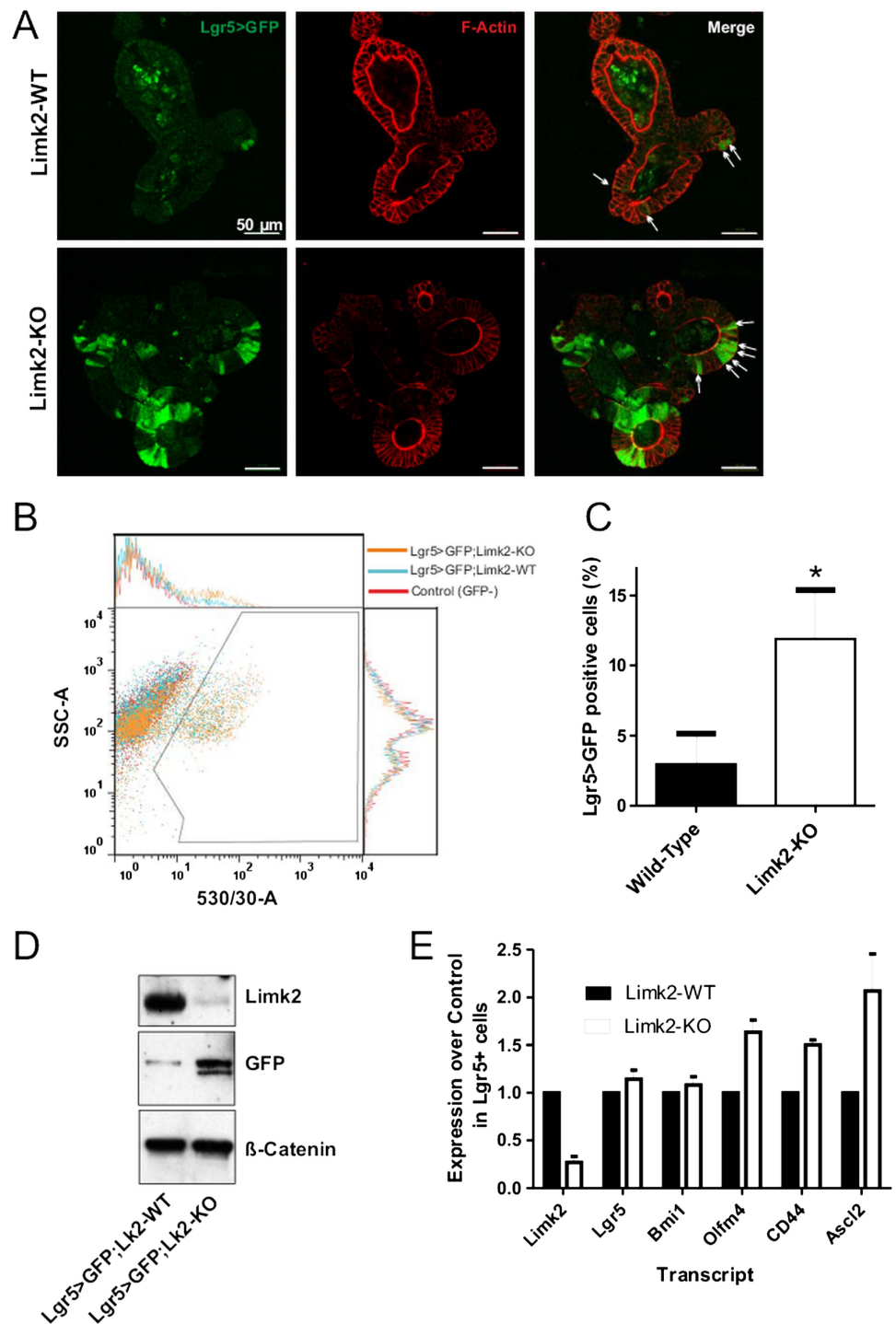
dysplasia (figure 9E,G). These results indicate that the removal of *Limk2* in a colitis-associated CRC mouse model had a mild effect on tumour initiation, but had a significant impact on tumour growth and on the acquisition of a more invasive phenotype. This could be due to the relief of a proliferative constraint on gastrointestinal stem cells under conditions that favour their continuous self-renewal, thus contributing to CRC.

DISCUSSION

We found that LIMK2 expression was reduced in the intestinal tumours of cancer-prone genetically modified mice, as well as in human CRC cell lines and tumours. To gain insight into the potential roles of LIMK2, we undertook genetic analysis in the *Drosophila* midgut, which is emerging as an informative model

for gastrointestinal homeostasis and tumorigenesis,⁴⁴ and using intestinal epithelial cells isolated from genetically modified mice. These studies revealed a conserved role for LIMK2 in constraining gastrointestinal stem cells in *Drosophila* and mice, such that relief of this constraint allowed for the expansion of stem cell numbers. Given that accumulating evidence indicates that stem cells are the predominant cells of origin for colorectal tumours,²⁻⁵ a logical conclusion of this study is that there is a positive selection for reduced LIMK2 expression and/or activity during CRC initiation and progression to allow propagation of gastrointestinal stem cells. Consistent with this conclusion, genetic deletion of *Limk2* to reduce its expression in the AOM/DSS colitis-associated CRC mouse model resulted in increased average intestinal tumour volume and a more severe dysplastic and hyperproliferative phenotype.

Figure 8 *Limk2* deletion increases cultured mouse intestinal stem cell proportion. (A) Self-renewing intestinal epithelial cells were isolated from wild-type (WT) and *Limk2* knockout (KO) mice and propagated *in vitro* in the presence of the growth factors EGF, R-spondin1 and Noggin while embedded in three-dimensional Matrigel. Organoids were fixed, stained for filamentous actin with phalloidin, and visualised for *Lgr5*-driven GFP expression and phalloidin staining by confocal microscopy. (B) Organoids were isolated and disrupted to yield single cell suspensions. After a brief incubation with propidium iodide (PI), FACS analysis of 10 000 PI-negative live cells was used to determine the proportion of *Lgr5*>*GFP*-positive cells in each genotype. (C) Graph of results from three independent FACS experiments. * $p < 0.05$ by Student's t test. (D) Equivalent cell numbers from disrupted organoids of intestinal epithelial cells from WT and *Limk2* KO mice were used to prepare whole cell lysates that were western blotted as indicated. (E) RT-PCR analysis of stem cell marker expression in sorted GFP-positive cells from WT and *Limk2*-KO mice expressing *Lgr5*>*GFP*. The expression levels of each indicated stem cell marker did not vary significantly between the WT and *Limk2*-KO mice, indicating equivalent 'stemness'.

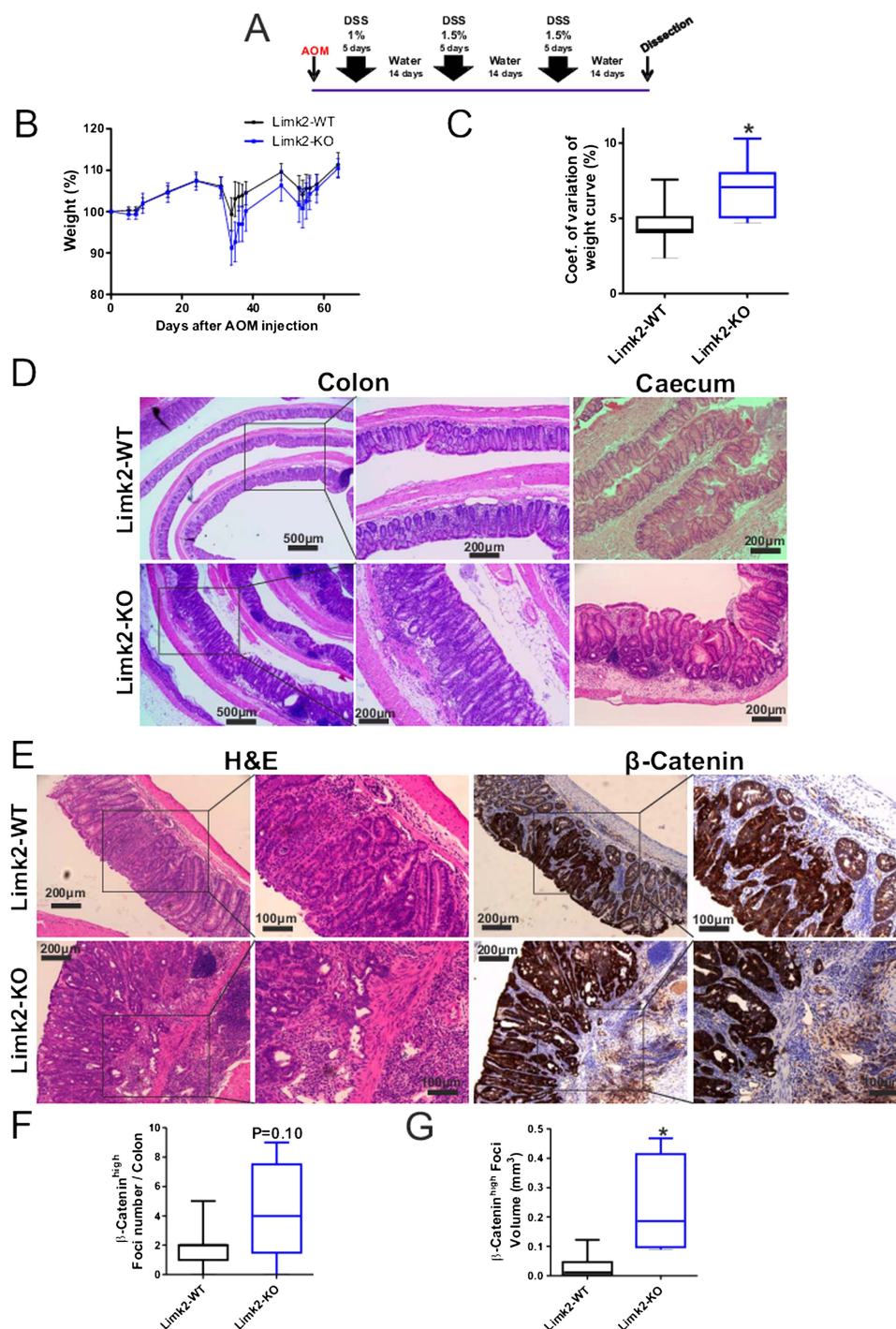


The reduced LIMK2 expression in CRC was surprising given the reports of elevated LIM kinase expression in other cancers including breast,^{10 11} malignant melanoma¹² and prostate¹³ tumours. Because of the role of LIM kinases in regulating actomyosin cytoskeletal dynamics, it has been assumed that there would consistently be elevated LIM kinase expression in advanced cancers to drive local invasion and distant metastasis. Indeed, we showed that inhibition of LIM kinase activity by RNAi or chemical inhibition blocked the collective invasion of breast cancer and squamous cell carcinomas by blocking the invasive ability of leading cells using in-vitro three-dimensional invasion models.⁴⁵ However, by focusing on how LIM kinase activity influences processes involved in cell motility and

invasion, reports of negative roles of LIM kinase on functions such as cell cycle regulation may have been overlooked. Elevated LIMK2 levels following DNA damage were found to promote G₂/M arrest via cofilin,⁴⁶ which is consistent with a proposed role for LIMK2 during mitosis in regulating microtubule organisation and spindle orientation.^{47 48} Given that expression of the LIMK2a and LIMK2b variants has also been reported to be reduced in thyroid cancers,⁴⁶ it will be important to re-consider how LIMK2 contributes to specific cancers rather than attempting to construct a unified theory.

In actual fact, the role of LIM kinases in regulating cofilin phosphorylation and filamentous actin turnover is nuanced, and in some circumstances it may actually be more favourable for

Figure 9 *Limk2* deletion increases tumour volume and dysplasia in a colitis-associated colorectal cancer mouse model. (A) Timeline of experimental procedure. (B) Mean weights of wild-type and *Limk2* knockout mice during the experimental procedure relative to starting weight (100%). (C) Coefficient of variation in weight curves for wild-type and *Limk2* knockout mice. * $p < 0.05$ by Student's t test. (D) Cross-sections of colon and caecum from wild-type and *Limk2* knockout mice as indicated. Boxes indicate regions depicted in higher magnification images. (E) Serial sections of colon tissue from wild-type and *Limk2* knockout mice as indicated. Boxes indicate regions depicted in higher magnification images. Elevated β -catenin staining relative to surrounding tissue was used to identify tumours and define dimensions. (F) Number of β -catenin-positive foci per colon section from wild-type and *Limk2* knockout mice as indicated. p Value by Student's t test. (G) Volume of β -catenin-positive foci from wild-type and *Limk2* knockout mice as indicated. * $p < 0.05$ by Student's t test.



increased invasive ability for there to be reduced LIM kinase expression and activity. We previously found that ectopic expression of LIMK1 decreased the motility of Ras-transformed Swiss 3T3 fibroblasts,⁴⁹ while overexpression of LIMK1 in MTLn3 rat mammary carcinoma cells inhibited lamellipod extensions,⁵⁰ EGF-stimulated motility, and in vivo invasion.⁵¹ The relative proportions of LIM kinase and cofilin, as well as the activity of cofilin phosphatases such as Slingshot, contribute to regulating the cofilin activity cycle that is the key determinant of invasive and metastatic potential.⁵²⁻⁵³ The continuous decreases in LIMK2 expression and cofilin phosphorylation with advancing tumour grade suggests that, in addition to the effects on

gastrointestinal stem cells, there may be additional contributions of reduced LIMK2 signal output in promoting tumour cell invasiveness. As a result, there may actually be two distinct ways that the reduction in LIMK2 expression contributes to CRC; through relief of constraints on stem cells early in tumorigenesis, and by promoting cell invasiveness during more advanced stages.

An inference from this study is that because LIMK2 levels are decreased in a sizeable proportion of CRC patients, these cancers might be more effectively treated with some chemotherapeutics because knocking down and/or inhibiting LIMK2 sensitises cancer cells to DNA damaging agents,¹⁷ Aurora A inhibitors,⁵⁴ Ras inhibition⁵⁵ and microtubule-

destabilising drugs such as vincristine and vinblastine.⁵⁶ Therefore, knowledge of LIMK2 expression levels in CRC may have utility in patient stratification for the development of personalised therapies.

Acknowledgements The authors would like to thank Colin Nixon and colleagues in histology services and the biological research service at the Beatson Institute of Cancer Research. They also acknowledge the support of the Think Pink breast cancer group who funded purchase of the NDP slide scanner.

Contributors Study concept and design: FCL, JC, MV, GIM, MFO; acquisition of data: FCL, JM, JB, CO, GIM, MFO; analysis and interpretation of data: FCL, JC, OJS, MV, GIM, MFO; drafting of the manuscript: FCL, MFO; critical revision of the manuscript for important intellectual content: FCL, OJS, MV, GIM, MFO; statistical analysis: FCL, GIM, MFO; obtained funding: OJS, MV, GIM, MFO; administrative, technical, or material support: RS, KS, SMF.

Funding This study was funded by Cancer Research UK.

Competing interests None.

Patient consent Obtained.

Ethics approval All tissue samples were collected under strict institutional review board-approved guidelines/protocols with informed consent (National Research Ethics Service, North of Scotland).

Provenance and peer review Not commissioned; externally peer reviewed.

Data sharing statement Data will be shared on request.

Open Access This is an Open Access article distributed in accordance with the Creative Commons Attribution Non Commercial (CC BY-NC 3.0) license, which permits others to distribute, remix, adapt, build upon this work non-commercially, and license their derivative works on different terms, provided the original work is properly cited and the use is non-commercial. See: <http://creativecommons.org/licenses/by-nc/3.0/>

REFERENCES

- Davies EJ, Marsh V, Clarke AR. Origin and maintenance of the intestinal cancer stem cell. *Mol Carcinog* 2011;50:254–63.
- Schepers AG, Snippet HJ, Stange DE, et al. Lineage tracing reveals Lgr5+ stem cell activity in mouse intestinal adenomas. *Science* 2012;337:730–5.
- Barker N, Ridgway RA, van Es JH, et al. Crypt stem cells as the cells-of-origin of intestinal cancer. *Nature* 2009;457:608–11.
- Merlos-Suarez A, Barriga FM, Jung P, et al. The intestinal stem cell signature identifies colorectal cancer stem cells and predicts disease relapse. *Cell Stem Cell* 2011;8:511–24.
- Ziskin JL, Dunlap D, Yaylaoglu M, et al. In situ validation of an intestinal stem cell signature in colorectal cancer. *Gut* 2013;62:1012–23.
- Olson MF, Sahai E. The actin cytoskeleton in cancer cell motility. *Clin Exp Metastasis* 2009;26:273–87.
- Samuel MS, Olson MF. Dying alone: a tale of rho. *Cell Stem Cell* 2010;7:135–6.
- Scott RW, Olson MF. LIM kinases: function, regulation and association with human disease. *J Mol Med* 2007;85:555–68.
- Manetti F. Recent findings confirm LIM domain kinases as emerging target candidates for cancer therapy. *Curr Cancer Drug Targets* 2012;12:543–60.
- Bagheri-Yarmand R, Mazumdar A, Sahin AA, et al. LIM kinase 1 increases tumor metastasis of human breast cancer cells via regulation of the urokinase-type plasminogen activator system. *Int J Cancer* 2006;118:2703–10.
- McConnell BV, Koto K, Gutierrez-Hartmann A. Nuclear and cytoplasmic LIMK1 enhances human breast cancer progression. *Mol Cancer* 2011;10:75.
- Okamoto I, Pirker C, Bilban M, et al. Seven novel and stable translocations associated with oncogenic gene expression in malignant melanoma. *Neoplasia* 2005;7:303–11.
- Davila M, Frost AR, Grizzle WE, et al. LIM kinase 1 is essential for the invasive growth of prostate epithelial cells: implications in prostate cancer. *J Biol Chem* 2003;278:36868–75.
- D'Abaco GM, Olson MF. Mouse embryo fibroblasts: a genetic model system for studying Rho- and Ras-dependent cell cycle progression. *Methods Enzymol* 2000;325:415–25.
- Sato T, Vries RG, Snippet HJ, et al. Single Lgr5 stem cells build crypt-villus structures in vitro without a mesenchymal niche. *Nature* 2009;459:262–5.
- Emaduddin M, Bicknell DC, Bodmer WF, et al. Cell growth, global phosphotyrosine elevation, and c-Met phosphorylation through Src family kinases in colorectal cancer cells. *Proc Natl Acad Sci U S A* 2008;105:2358–62.
- Croft DR, Crighton D, Samuel MS, et al. p53-mediated transcriptional regulation and activation of the actin cytoskeleton regulatory RhoC to LIMK2 signaling pathway promotes cell survival. *Cell Res* 2011;21:666–82.
- Samuel MS, Munro J, Bryson S, et al. Tissue selective expression of conditionally-regulated ROCK by gene targeting to a defined locus. *Genesis* 2009;47:440–6.
- Barker N, van Es JH, Kuipers J, et al. Identification of stem cells in small intestine and colon by marker gene Lgr5. *Nature* 2007;449:1003–7.
- Cordero JB, Macagno JP, Stefanatos RK, et al. Oncogenic Ras diverts a host TNF tumor suppressor activity into tumor promoter. *Dev Cell* 2010;18:999–1011.
- O'Dwyer D, Ralton LD, O'Shea A, et al. The proteomics of colorectal cancer: identification of a protein signature associated with prognosis. *PLoS One* 2011;6:e27718.
- Hope NR, Murray GI. The expression profile of RNA-binding proteins in primary and metastatic colorectal cancer: relationship of heterogeneous nuclear ribonucleoproteins with prognosis. *Hum Pathol* 2011;42:393–402.
- Murray GI, Patimalla S, Stewart KN, et al. Profiling the expression of cytochrome P450 in breast cancer. *Histopathology* 2010;57:202–11.
- Fouls JM, Parnell KM, Nix RN, et al. Epigenetic drug discovery: targeting DNA methyltransferases. *J Biomol Screen* 2012;17:2–17.
- Rhodes DR, Yu J, Shanker K, et al. ONCOMINE: a cancer microarray database and integrated data-mining platform. *Neoplasia* 2004;6:1–6.
- Kaiser S, Park YK, Franklin JL, et al. Transcriptional recapitulation and subversion of embryonic colon development by mouse colon tumor models and human colon cancer. *Genome Biol* 2007;8:R131.
- The Cancer Genome Atlas Network. Comprehensive molecular characterization of human colon and rectal cancer. *Nature* 2012;487:330–7.
- Skrzypczak M, Goryca K, Rubel T, et al. Modeling oncogenic signaling in colon tumors by multidirectional analyses of microarray data directed for maximization of analytical reliability. *PLoS One* 2010;5:e13091.
- Hong Y, Downey T, Eu KW, et al. A 'metastasis-prone' signature for early-stage mismatch-repair proficient sporadic colorectal cancer patients and its implications for possible therapeutics. *Clin Exp Metastasis* 2010;27:83–90.
- Samuel MS, Lopez JI, McGhee EJ, et al. Actomyosin-mediated cellular tension drives increased tissue stiffness and β -catenin activation to induce epidermal hyperplasia and tumor growth. *Cancer Cell* 2011;19:776–91.
- Marsh V, Winton DJ, Williams GT, et al. Epithelial Pten is dispensable for intestinal homeostasis but suppresses adenoma development and progression after Apc mutation. *Nat Genet* 2008;40:1436–44.
- Conway C, Dobson L, O'Grady A, et al. Virtual microscopy as an enabler of automated/quantitative assessment of protein expression in TMAs. *Histochem Cell Biol* 2008;130:447–63.
- Mohammed ZM, Going JJ, McMillan DC, et al. Comparison of visual and automated assessment of HER2 status and their impact on outcome in primary operable invasive ductal breast cancer. *Histopathology* 2012;61:675–84.
- Polesello C, Roch F, Gobert V, et al. Modeling cancers in *Drosophila*. *Prog Mol Biol Transl Sci* 2011;100:51–82.
- Rudrapatna VA, Cagan RL, Das TK. *Drosophila* cancer models. *Dev Dyn* 2012;241:107–18.
- Cordero JB, Sansom OJ. Wnt signalling and its role in stem cell-driven intestinal regeneration and hyperplasia. *Acta physiol* 2012;204:137–43.
- Lee WC, Beebe K, Sudmeier L, et al. Adenomatous polyposis coli regulates *Drosophila* intestinal stem cell proliferation. *Development* 2009;136:2255–64.
- Lin G, Xu N, Xi R. Paracrine Wingless signalling controls self-renewal of *Drosophila* intestinal stem cells. *Nature* 2008;455:119–23.
- Cordero J, Vidal M, Sansom O. APC as a master regulator of intestinal homeostasis and transformation: from flies to vertebrates. *Cell Cycle* 2009;8:2926–31.
- Brand AH, Perrimon N. Targeted gene expression as a means of altering cell fates and generating dominant phenotypes. *Development* 1993;118:401–15.
- Micchelli CA, Perrimon N. Evidence that stem cells reside in the adult *Drosophila* midgut epithelium. *Nature* 2006;439:475–9.
- Jiang H, Patel PH, Kohlmaier A, et al. Cytokine/Jak/Stat signaling mediates regeneration and homeostasis in the *Drosophila* midgut. *Cell* 2009;137:1343–55.
- Okayasu I, Ohkusa T, Kajiuura K, et al. Promotion of colorectal neoplasia in experimental murine ulcerative colitis. *Gut* 1996;39:87–92.
- Jiang H, Edgar BA. Intestinal stem cells in the adult *Drosophila* midgut. *Exp Cell Res* 2011;317:2780–8.
- Scott RW, Hooper S, Crighton D, et al. LIM kinases are required for invasive path generation by tumor and tumor-associated stromal cells. *J Cell Biol* 2010;191:169–85.
- Hsu FF, Lin TY, Chen JY, et al. p53-Mediated transactivation of LIMK2b links actin dynamics to cell cycle checkpoint control. *Oncogene* 2010;29:2864–76.
- Heng YW, Lim HH, Mina T, et al. TPPP acts downstream of RhoA-ROCK-LIMK2 to regulate astral microtubule organization and spindle orientation. *J Cell Sci* 2012;125:1579–90.
- Sumi T, Hashigasako A, Matsumoto K, et al. Different activity regulation and subcellular localization of LIMK1 and LIMK2 during cell cycle transition. *Exp Cell Res* 2006;312:1021–30.
- Sahai E, Olson MF, Marshall CJ. Cross-talk between Ras and Rho signalling pathways in transformation favours proliferation and increased motility. *Embo J* 2001;20:755–66.
- Zebda N, Bernard O, Bailly M, et al. Phosphorylation of ADF/cofilin abolishes EGF-induced actin nucleation at the leading edge and subsequent lamellipod extension. *J Cell Biol* 2000;151:1119–28.

- 51 Wang W, Mouneimne G, Sidani M, *et al*. The activity status of cofilin is directly related to invasion, intravasation, and metastasis of mammary tumors. *J Cell Biol* 2006;173:395–404.
- 52 Oser M, Condeelis J. The cofilin activity cycle in lamellipodia and invadopodia. *J Cell Biochem* 2009;108:1252–62.
- 53 van Rheenen J, Condeelis J, Glogauer M. A common cofilin activity cycle in invasive tumor cells and inflammatory cells. *J Cell Sci* 2009;122:305–11.
- 54 Johnson EO, Chang KH, Ghosh S, *et al*. LIMK2 is a crucial regulator and effector of Aurora-A-kinase-mediated malignancy. *J Cell Sci* 2012;125:1204–16.
- 55 Mashiach-Farkash E, Rak R, Elad-Sfadia G, *et al*. Computer-based identification of a novel LIMK1/2 inhibitor that synergizes with salirasib to destabilize the actin cytoskeleton. *Oncotarget* 2012;3:629–39.
- 56 Po'uha ST, Shum MS, Goebel A, *et al*. LIM-kinase 2, a regulator of actin dynamics, is involved in mitotic spindle integrity and sensitivity to microtubule-destabilizing drugs. *Oncogene* 2010;29:597–607.##



Reduced LIMK2 expression in colorectal cancer reflects its role in limiting stem cell proliferation

Filipe C Lourenço, June Munro, Jennifer Brown, et al.

Gut 2014 63: 480-493 originally published online April 12, 2013

doi: [10.1136/gutjnl-2012-303883](https://doi.org/10.1136/gutjnl-2012-303883)

Updated information and services can be found at:

<http://gut.bmj.com/content/63/3/480.full.html>

These include:

Data Supplement

"Supplementary Data"

<http://gut.bmj.com/content/suppl/2013/04/11/gutjnl-2012-303883.DC1.html>

References

This article cites 56 articles, 15 of which can be accessed free at:

<http://gut.bmj.com/content/63/3/480.full.html#ref-list-1>

Open Access

This is an Open Access article distributed in accordance with the Creative Commons Attribution Non Commercial (CC BY-NC 3.0) license, which permits others to distribute, remix, adapt, build upon this work non-commercially, and license their derivative works on different terms, provided the original work is properly cited and the use is non-commercial. See: <http://creativecommons.org/licenses/by-nc/3.0/>

Email alerting service

Receive free email alerts when new articles cite this article. Sign up in the box at the top right corner of the online article.

Topic Collections

Articles on similar topics can be found in the following collections

[Open access](#) (132 articles)

[Colon cancer](#) (1301 articles)

[Cancer: small intestine](#) (158 articles)

Notes

To request permissions go to:

<http://group.bmj.com/group/rights-licensing/permissions>

To order reprints go to:

<http://journals.bmj.com/cgi/reprintform>

To subscribe to BMJ go to:

<http://group.bmj.com/subscribe/>