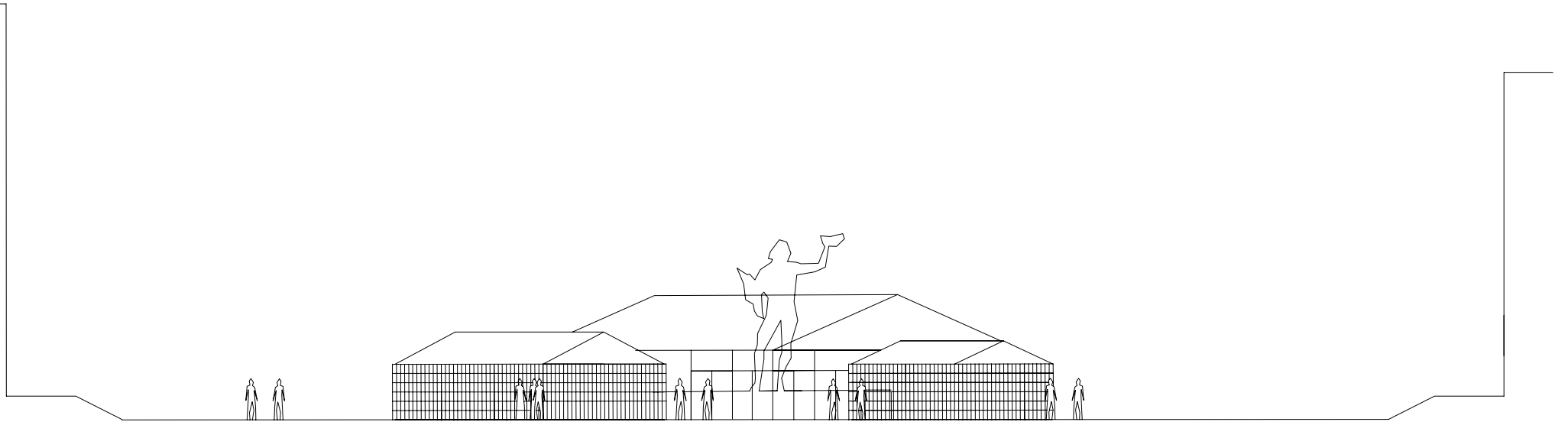


ELIA INTERACTIVE FORUM

OCT 29 - NOV 1 2008

HENRIC BENESCH, ARCHITECT MSA, 080902



1:200 (A4)

ELIA INTERACTIVE FORUM

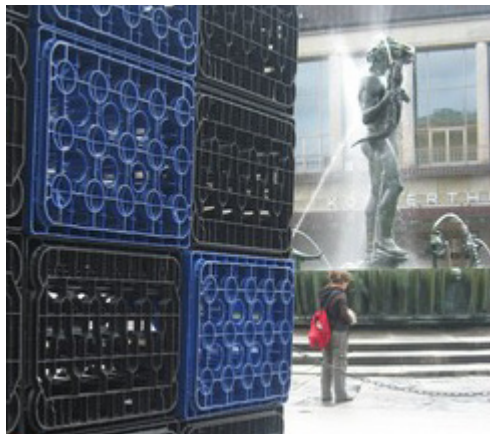
OCT 29 - NOV 1 2008

CONCEPT AND LAYOUT

The forum is made out of 3 tents (15x15m, 8x9m, 6x6m) with the entrance facing Götaplatsen and the statue of Poseidon (a Gothenburg landmark).

Besides the tents the basic element in this design is a beer-crate or the be exact, an array of beercrates (3x8 crates). These blocks can be used as screens or be stacked on top of each other creating benches, tables and bars, taking care of the visual profile as well as functional demands of ELIA Interactive Forum.

The crates are strapped together and rearranged between sets (Forum and Club). Further on when the conference is over, the crates can be put back into circulation, minimizing the waste production of ELIA Interactive Forum.



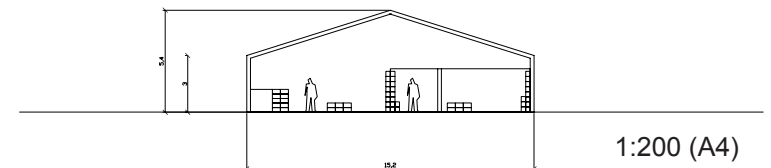
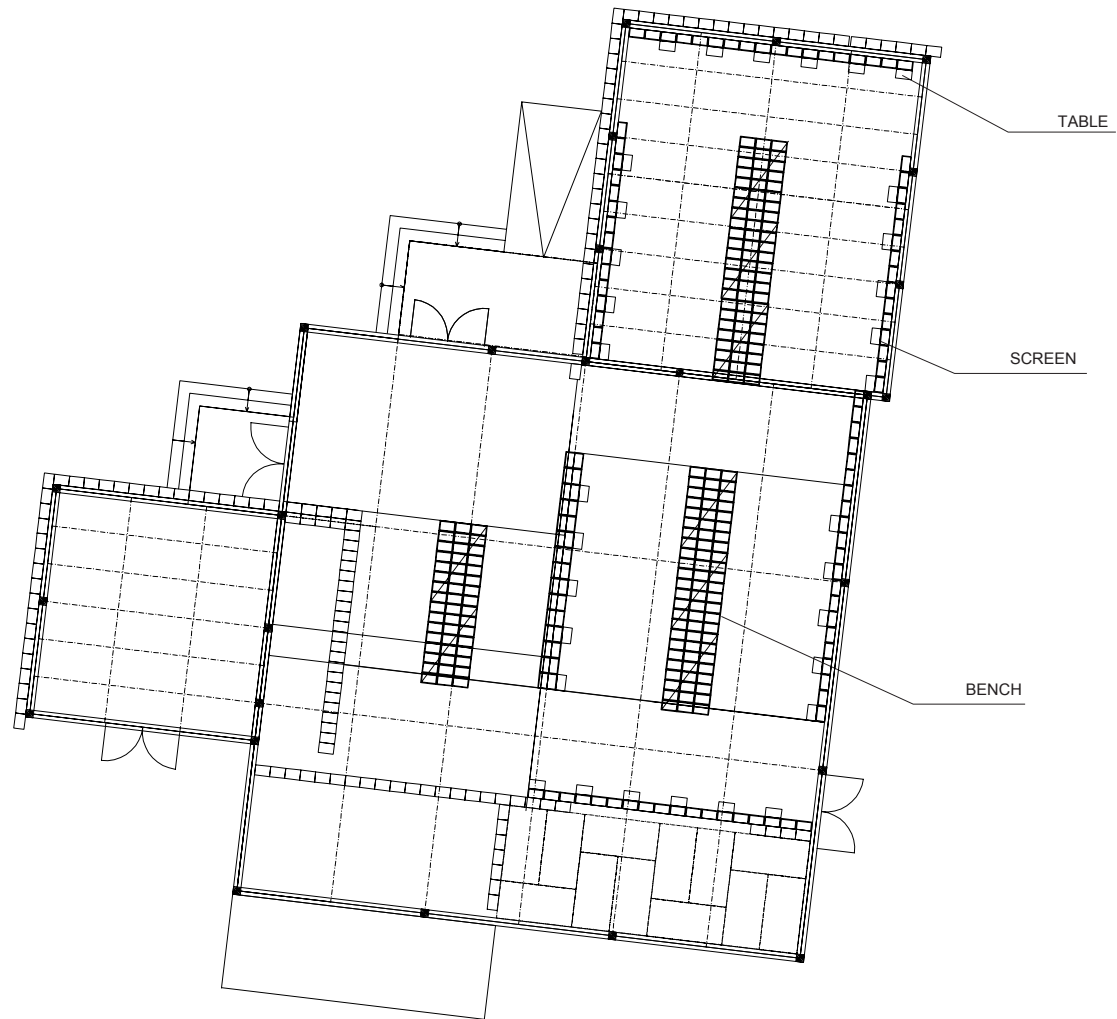
ELIA INTERACTIVE FORUM

OCT 29 - NOV 1 2008

INTERACTIVE FORUM

During the day the tents operate as a forum. The walls are covered with crate-screens on which posters can be mounted. The screens are complemented by a small bar-table made out of 4 crates on top of each other. There are a maximum of 34 stands.

In between the stands is a large bench (2 crates high), making out one large common element for casual/informal as well as directed/formal exchange.



ELIA INTERACTIVE FORUM

OCT 29 - NOV 1 2008

INTERACTIVE CLUB

During the evening the crates are rearranged in a less formal arrangement with benches/tables/bars in various sizes and screens creating a range of various spaces.

The largescale block (3x8) are complemented with smaller blocks as well as single crates urging to be stacked and turned into various temporal arrangements.

