



Open Archive Toulouse Archive Ouverte (OATAO)

OATAO is an open access repository that collects the work of Toulouse researchers and makes it freely available over the web where possible

This is an author's version published in: <http://oatao.univ-toulouse.fr/16310>

Official URL: <http://resilience2014.sciencesconf.org/25114>

To cite this version:

Deconchat, Marc  and Ouin, Annie  and Alignier, Audrey and Roume, Anthony  and Giffard, Brice  and Ladet, Sylvie  and Sourdril, Anne *Edges between agriculture and forest viewed as interfaces between social and ecological systems.* (2014) In: Résilience 2014, 4 May 2014 - 8 May 2014 (Montpellier, France).

Any correspondence concerning this service should be sent to the repository administrator: tech-oatao@listes-diff.inp-toulouse.fr

Edges between agriculture and forest viewed as interfaces between social and ecological systems

Marc Deconchat, Annie Ouin, Audrey
Alignier, Anthony Roume, Brice
Giffard, Sylvie Ladet, Anne Sourdril

UMR1201 Dynafor INRA/INP ENSAT/ INP EIPurpan
Dynamiques et écologie des paysages agriforestiers
dynafor.toulouse.inra.fr

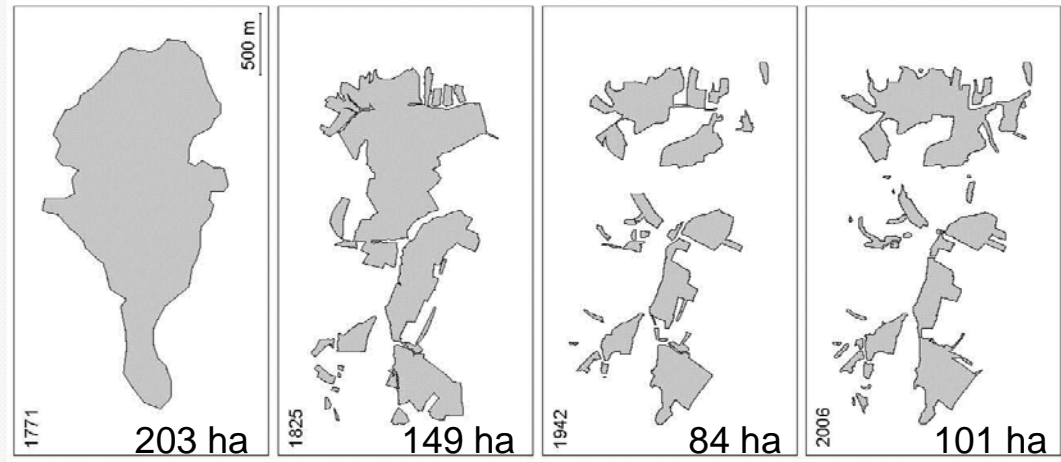


2 Take home messages

Edges are important features of landscapes deserving a better understanding to promote their management for ecosystem services

Social-ecological system framework needs improvements to be able to cope with characteristics of edges

Many forest edges in temperate landscapes



Landscape and Urban Planning 103 (2011) 100–117

Contents lists available at ScienceDirect

Landscape and Urban Planning

Journal homepage: www.elsevier.com/locate/landurbplan

History and spatial complexity of deforestation and logging in small private forests

Emilie Andrieu^{a,b,*}, Sylvie Ladet^{a,b}, Wilfried Heintz^{a,b,c}, Marc Deconchat^{a,b}

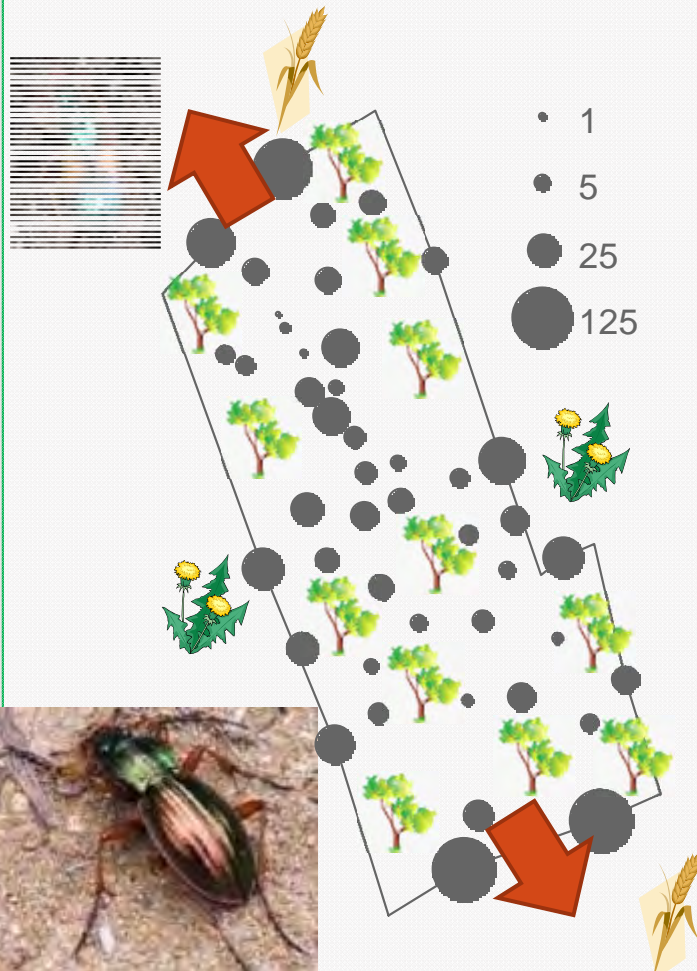
Ecosystem services around edges

Density of overwintering carabids (m^{-2})

Ent. J. Entomol. **108**: 615–622, 2011
<http://www.eje.cz/scripts/viewabstract.php?abstract=166>
ISSN 1210-5759 (print), 1802-8829 (online)

Abundance and species richness of overwintering ground beetles (Coleoptera: Carabidae) are higher in the edge than in the centre of a woodlot

ANTHONY ROUME¹, ANNIE OUIN², LAURENT RAISON¹ and MARC DECONCHAT¹



Edges as overwintering sites for syrphid larvae feeding on wheat aphids

Sarthou *et al.* 2005; Arrignon *et al.* 2007

Forest edges as social boundaries



Copyright © 2012 by the author(s). Published here under license by the Resilience Alliance.
Sousiril, A., E. Andrieu, A. Cabanettes, B. Elvakime, and S. Ladet. 2012. How to maintain domesticity of
usages in small rural forests? Lessons from forest management continuity through a French case study.
Ecology and Society 17(2): 6.
<http://dx.doi.org/10.5751/ES-04746-170206>

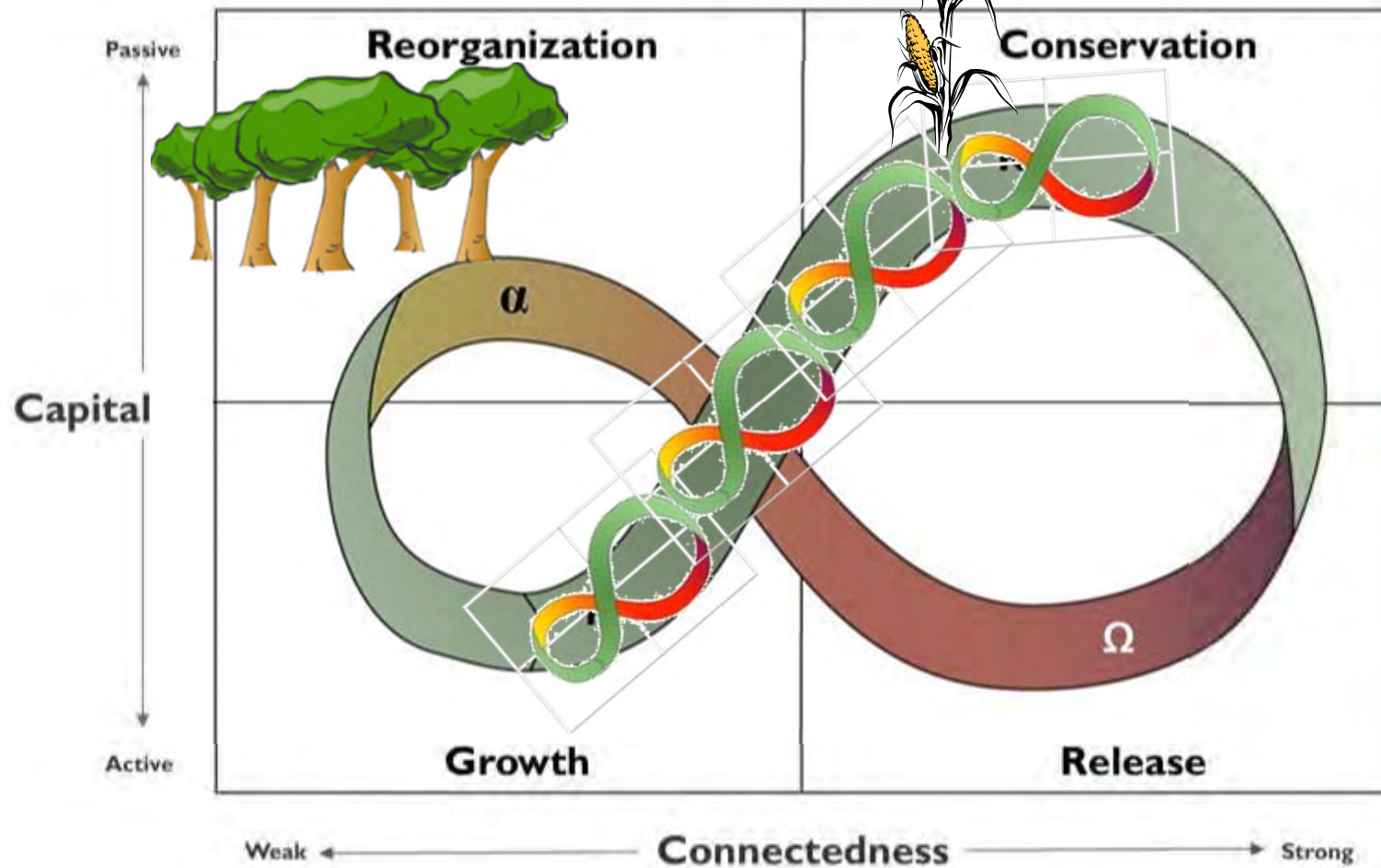
Research, part of a Special Feature on Public policies and management of rural forests: lasting alliance or fool's dialogue?
**How to Maintain Domesticity of Usages in Small Rural Forests? Lessons
from Forest Management Continuity through a French Case Study**

Anne Sousiril¹, Emilie Andrieu², Alain Cabanettes², Bernard Elvakime², and Sylvie Ladet²

2 rates of disturbance / types of management / land covers



Forest and agriculture as dynamic complex systems

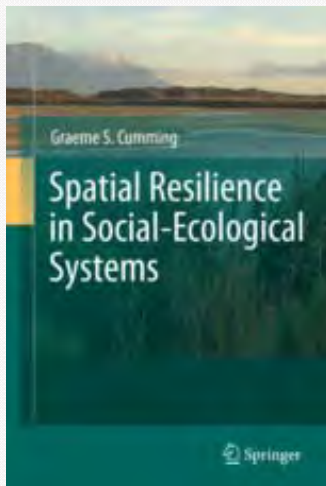


What about their spatial contacts?



Conclusion

- How to deal with spatial interfaces between several complex social-ecological dynamic systems?



- How to improve the spatial resilience concept?