

LONDON
SCHOOL of
HYGIENE
& TROPICAL
MEDICINE



Jeffries, Claire; Lawrence, Gena; Golovko, George; Kristan, Mojca; Orsborne, James; Spence, Kirstin; Hurn, Eliot; Bandibabone, Janvier; Tantely, Luciano; Raharimalala, Fara; Keita, Kalil; Camara, Denka; Barry, Yaya; Watsenga, Francis; Manzambi, Emile; Afrane, Yaw; Mohammed, Abdul; Abeku, Tarekegn; Hedge, Shivanand; Khanipov, Kamil; Pimenova, Maria; Fofanov, Yuriy; Boyer, Sebastien; Irish, Seth; Hughes, Grant; Walker, Thomas (2018) Novel Wolbachia strains in Anopheles malaria vectors from Sub-Saharan Africa. Wellcome Open Res, 3. 113-. ISSN 2398-502X DOI: <https://doi.org/10.12688/wellcomeopenres.14765.1>

Downloaded from: <http://researchonline.lshtm.ac.uk/4650513/>

DOI: [10.12688/wellcomeopenres.14765.1](https://doi.org/10.12688/wellcomeopenres.14765.1)

Usage Guidelines

Please refer to usage guidelines at <http://researchonline.lshtm.ac.uk/policies.html> or alternatively contact researchonline@lshtm.ac.uk.

Available under license: <http://creativecommons.org/licenses/by/2.5/>



RESEARCH ARTICLE

Novel *Wolbachia* strains in *Anopheles* malaria vectors from Sub-Saharan Africa [version 1; referees: 2 approved, 1 approved with reservations]

Claire L. Jeffries ¹, Gena G. Lawrence², George Golovko³, Mojca Kristan ¹, James Osborne¹, Kirstin Spence ¹, Eliot Hurn ¹, Janvier Bandibabone ⁴, Luciano M. Tantely ⁵, Fara N. Raharimalala ⁵, Kalil Keita⁶, Denka Camara⁶, Yaya Barry⁶, Francis Wat'senga⁷, Emile Z. Manzambi⁷, Yaw A. Afrane ⁸, Abdul R. Mohammed ⁸, Tarekegn A. Abeku⁹, Shivanand Hedge¹⁰, Kamil Khanipov ³, Maria Pimenova³, Yuriy Fofanov³, Sebastien Boyer ⁵, Seth R. Irish¹¹, Grant L. Hughes ¹², Thomas Walker ¹

¹Department of Disease Control, London School of Hygiene & Tropical Medicine, London, WC1E 7HT, UK

²Entomology Branch, Division of Parasitic Diseases and Malaria, Center for Global Health, Centers for Disease Control and Prevention, Atlanta, Georgia, 30033, USA

³Department of Pharmacology and Toxicology, University of Texas Medical Branch at Galveston, Galveston, Texas, USA

⁴Laboratoire d'entomologie médicale et parasitologie, Centre de Recherche en Sciences Naturelles (CRSN/LWIRO), Sud-Kivu, Congo, Democratic Republic

⁵Unité d'Entomologie Médicale, Institut Pasteur de Madagascar, Antananarivo, Madagascar

⁶Nationale de Lutte contre le Paludisme, Ministère de la Santé, Conakry, Guinea

⁷National Institute of Biomedical Research, Kinshasa, Congo, Democratic Republic

⁸Department of Medical Microbiology, University of Ghana, Accra, Ghana

⁹Malaria Consortium, London, EC2A 4LT, UK

¹⁰Department of Pathology, University of Texas Medical Branch, Galveston, Texas, USA

¹¹The US President's Malaria Initiative and Entomology Branch, Centers for Disease Control and Prevention, Atlanta, Georgia, 30329-4027, USA

¹²Department of Pathology, Institute for Human Infections and Immunity, Center for Tropical Diseases, Center for Biodefense and Emerging Infectious Disease, University of Texas Medical Branch, Galveston, Texas, USA

V1 First published: 12 Sep 2018, 3:113 (<https://doi.org/10.12688/wellcomeopenres.14765.1>)

Latest published: 27 Nov 2018, 3:113 (<https://doi.org/10.12688/wellcomeopenres.14765.2>)

Abstract

Background: *Wolbachia*, a common insect endosymbiotic bacterium that can influence pathogen transmission and manipulate host reproduction, has historically been considered absent from the *Anopheles* (*An.*) genera, but has recently been found in *An. gambiae* s.l. populations. As there are numerous *Anopheles* species that have the capacity to transmit malaria, we analysed a range of species to determine *Wolbachia* prevalence rates, characterise novel *Wolbachia* strains and determine any correlation between the presence of *Plasmodium*, *Wolbachia* and the competing endosymbiotic bacterium *Asaia*.

Methods: *Anopheles* adult mosquitoes were collected from five

Open Peer Review

Referee Status: ? ✓ ✓

Invited Referees

malaria-endemic countries: Guinea, Democratic Republic of the Congo (DRC), Ghana, Uganda and Madagascar, between 2013 and 2017. Molecular analysis of samples was undertaken using quantitative PCR, Sanger sequencing, *Wolbachia* multilocus sequence typing (MLST) and high-throughput amplicon sequencing of the bacterial *16S rRNA* gene.

Results: Novel *Wolbachia* strains were discovered in five species: *An. coluzzii*, *An. gambiae* s.s., *An. arabiensis*, *An. moucheti* and *An. species 'A'*, increasing the number of *Anopheles* species known to be naturally infected. Variable prevalence rates in different locations were observed and novel strains were phylogenetically diverse, clustering with *Wolbachia* supergroup B strains. We also provide evidence for resident strain variants within *An. species 'A'*. *Wolbachia* is the dominant member of the microbiome in *An. moucheti* and *An. species 'A'*, but present at lower densities in *An. coluzzii*. Interestingly, no evidence of *Wolbachia/Asaia* co-infections was seen and *Asaia* infection densities were also shown to be variable and location dependent.

Conclusions: The important discovery of novel *Wolbachia* strains in *Anopheles* provides greater insight into the prevalence of resident *Wolbachia* strains in diverse malaria vectors. Novel *Wolbachia* strains (particularly high-density strains) are ideal candidate strains for transinfection to create stable infections in other *Anopheles* mosquito species, which could be used for population replacement or suppression control strategies.

Keywords

Wolbachia, mosquitoes, malaria, Anopheles, Asaia, endosymbionts

REVISED

version 2

published
27 Nov 2018

version 1

published
12 Sep 2018

1 2 3






report



report



report

- 1 **Mathilde Gendrin** , Institut Pasteur de la Guyane, French Guiana
Institut Pasteur, France
Ottavia Romoli, Institut Pasteur de la Guyane, French Guiana
- 2 **Anne Duplouy** , Lund University, Sweden
- 3 **Christophe Antonio-Nkondjio** , Organisation for Coordination in the Fight Against Endemic Diseases in Central Africa, Cameroon

Discuss this article

Comments (0)

Corresponding author: Thomas Walker (thomas.walker@lshtm.ac.uk)

Author roles: **Jeffries CL:** Data Curation, Formal Analysis, Investigation, Methodology, Writing – Original Draft Preparation, Writing – Review & Editing; **Lawrence GG:** Methodology; **Golovko G:** Investigation, Methodology; **Kristan M:** Investigation, Methodology; **Orsborne J:** Investigation, Methodology; **Spence K:** Investigation, Methodology; **Hurn E:** Investigation, Methodology; **Bandibabone J:** Investigation, Methodology; **Tantely LM:** Investigation, Methodology; **Raharimalala FN:** Investigation, Methodology; **Keita K:** Investigation, Methodology; **Camara D:** Investigation, Methodology; **Barry Y:** Investigation, Methodology; **Wat'senga F:** Investigation, Methodology; **Manzambi EZ:** Investigation, Methodology; **Afrane YA:** Investigation, Methodology; **Mohammed AR:** Investigation, Methodology; **Abeku TA:** Investigation, Methodology; **Hedge S:** Investigation, Methodology; **Khanipov K:** Investigation, Methodology; **Pimenova M:** Investigation, Methodology; **Fofanov Y:** Investigation, Methodology; **Boyer S:** Investigation, Methodology; **Irish SR:** Investigation, Methodology; **Hughes GL:** Funding Acquisition, Investigation, Methodology, Supervision; **Walker T:** Conceptualization, Formal Analysis, Funding Acquisition, Investigation, Methodology, Project Administration, Supervision, Writing – Original Draft Preparation, Writing – Review & Editing

Competing interests: No competing interests were disclosed.

Grant information: CLJ and TW were supported by a Wellcome Trust /Royal Society grant awarded to TW (101285): <http://www.wellcome.ac.uk>; <https://royalsociety.org>. GLH is supported by NIH grants (R21AI124452 and R21AI129507), a University of Texas Rising Star award, the John S. Dunn Foundation Collaborative Research Award, the Robert J. Kleberg, Jr. and Helen C. Kleberg Foundation, and the Centers for Disease Control

and Prevention (CDC) (Cooperative Agreement Number U01CK000512). The papers contents are solely the responsibility of the authors and do not necessarily represent the official views of the CDC or the Department of Health and Human Services. This work was also supported by a James W. McLaughlin postdoctoral fellowship at the University of Texas Medical Branch to SH. Field work in Uganda was funded by UK aid (through the Programme Partnership Arrangement grant to Malaria Consortium). YAA and ARM were supported by a NIH grant R01AI123074. SRI was funded by the U.S. President's Malaria Initiative.

The funders had no role in study design, data collection and analysis, decision to publish, or preparation of the manuscript.

Copyright: © 2018 Jeffries CL *et al.* This is an open access article distributed under the terms of the [Creative Commons Attribution Licence](#), which permits unrestricted use, distribution, and reproduction in any medium, provided the original work is properly cited.

How to cite this article: Jeffries CL, Lawrence GG, Golovko G *et al.* **Novel *Wolbachia* strains in *Anopheles* malaria vectors from Sub-Saharan Africa [version 1; referees: 2 approved, 1 approved with reservations]** Wellcome Open Research 2018, 3:113 (<https://doi.org/10.12688/wellcomeopenres.14765.1>)

First published: 12 Sep 2018, 3:113 (<https://doi.org/10.12688/wellcomeopenres.14765.1>)

Background

Malaria is a mosquito-borne disease caused by infection with *Plasmodium* (*P.*) parasites, with transmission to humans occurring through the inoculation of *Plasmodium* sporozoites during blood-feeding of an infectious female *Anopheles* (*An.*) mosquito. The genus *Anopheles* consists of 475 formally recognised species with ~40 vector species/species complexes responsible for the transmission of malaria at a level of public health concern¹. During the mosquito infection cycle, *Plasmodium* parasites encounter a variety of resident microbiota both in the mosquito midgut and other tissues. Numerous studies have shown that certain species of bacteria can inhibit *Plasmodium* development^{2–4}. For example, *Enterobacter* bacteria that reside in the *Anopheles* midgut can inhibit the development of *Plasmodium* parasites prior to their invasion of the midgut epithelium^{5,6}. *Wolbachia* endosymbiotic bacteria are estimated to naturally infect ~40% of insect species⁷ including mosquito vector species that are responsible for transmission of human diseases, such as *Culex* (*Cx.*) *quinquefasciatus*^{8–10} and *Aedes* (*Ae.*) *albopictus*^{11,12}. Although *Wolbachia* strains have been shown to have variable effects on arboviral infections in their native mosquito hosts^{13–15}, transinfected *Wolbachia* strains have been considered for mosquito biocontrol strategies, due to observed arbovirus transmission blocking abilities and a variety of synergistic phenotypic effects. Transinfected strains in *Ae. aegypti* and *Ae. albopictus* provide strong inhibitory effects on arboviruses, with maternal transmission and cytoplasmic incompatibility enabling introduced strains to spread through populations^{16–22}. Open releases of *Wolbachia*-transinfected *Ae. aegypti* populations have demonstrated the ability of the wMel *Wolbachia* strain to invade wild populations²³ and provide strong inhibitory effects on viruses from field populations²⁴, with releases currently occurring in arbovirus endemic countries such as Indonesia, Vietnam, Brazil and Colombia (<https://www.worldmosquitoprogram.org>).

The prevalence of *Wolbachia* in *Anopheles* species has not been extensively studied, with most studies focused in Asia using classical PCR-based screening; up until 2014 there was no evidence of resident strains in mosquitoes from this genus^{25–29}. Furthermore, significant efforts to establish artificially infected lines were, up until recently, also unsuccessful³⁰. Somatic, transient infections of the *Wolbachia* strains wMelPop and wAlbB in *An. gambiae* were shown to significantly inhibit *P. falciparum*³¹, but the interference phenotype is variable with other *Wolbachia* strain-parasite combinations^{32–34}. A stable line was established in *An. stephensi*, a vector of malaria in southern Asia, using the wAlbB strain and this was also shown to confer resistance to *P. falciparum* infection³⁵. One potential reason postulated for the absence of *Wolbachia* in *Anopheles* species was thought to be the presence of other endosymbiotic bacteria, particularly from the genus *Asaia*³⁶. This acetic acid bacterium is stably associated with several *Anopheles* species and is often the dominant species in the mosquito microbiota³⁷. In laboratory studies, *Asaia* has been shown to impede the vertical transmission of *Wolbachia* in *Anopheles*³⁶ and was shown to have a negative correlation with *Wolbachia* in mosquito reproductive tissues³⁸.

Recently, resident *Wolbachia* strains have been discovered in the *An. gambiae* s.l. complex, which consists of multiple morphologically indistinguishable species including several major malaria vector species. *Wolbachia* strains (collectively named wAnga) were found in *An. gambiae* s.l. populations in Burkina Faso³⁹ and Mali⁴⁰, suggesting that *Wolbachia* may be more abundant in the *An. gambiae* complex across Sub-Saharan Africa. Globally, there is a large variety of *Anopheles* vector species (~70) that have the capacity to transmit malaria⁴¹ and could potentially contain resident *Wolbachia* strains. Additionally, this number of malaria vector species may be an underestimate given that recent studies using molecular barcoding have also revealed a larger diversity of *Anopheles* species than would have been identified using morphological identification alone^{42,43}.

In this study, we collected *Anopheles* mosquitoes from five malaria-endemic countries; Ghana, Democratic Republic of the Congo (DRC), Guinea, Uganda and Madagascar, from 2013–2017. Wild-caught adult female *Anopheles* were screened for *P. falciparum* malaria parasites, *Wolbachia* and *Asaia* bacteria. In total, we analysed mosquitoes from 17 *Anopheles* species that are known malaria vectors or implicated in transmission, and some unidentified species, discovering five species of *Anopheles* with resident *Wolbachia* strains; *An. coluzzii* from Ghana, *An. gambiae* s.s., *An. arabiensis*, *An. moucheti* and *An. species 'A'* from DRC. Using *Wolbachia* gene sequencing, including multilocus sequence typing (MLST), we show that the resident strains in these malaria vectors are diverse, novel strains and quantitative PCR (qPCR) and 16S rRNA amplicon sequencing data suggests that the strains in *An. moucheti* and *An. species 'A'* are higher density infections, compared to the strains found in the *An. gambiae* s.l. complex. We found no evidence for either *Wolbachia-Asaia* co-infections, or for either endosymbiont having any significant effect on the prevalence of *Plasmodium* in wild mosquito populations.

Methods

Study sites & collection methods

Anopheles adult mosquitoes were collected from five malaria-endemic countries in Sub-Saharan Africa (Guinea, Democratic Republic of the Congo (DRC), Ghana, Uganda and Madagascar) between 2013 and 2017 (Figure 1). Human landing catches, CDC light traps and pyrethrum spray catches were undertaken between April 2014 and February 2015 in 10 villages near four cities in Guinea; Foulayah (10.144633, -10.749717) and Balayani (10.1325, -10.7443) near Faranah; Djoumaya (10.836317, -14.2481) and Kaboye Amaraya (10.93435, -14.36995) near Boke; Tongbekoro (9.294295, -10.147953), Keredou (9.208919, -10.069525), and Gbangbadou (9.274363, -9.998639) near Kissidougou; and Makonon (10.291124, -9.363358), Balandou (10.407669, -9.219096), and Dalabani (10.463692, -9.451904) near Kankan. Human landing catches and pyrethrum spray catches were undertaken between January and September 2015 in seven sites of the DRC; Kinshasa (-4.415881, 15.412188), Mikalayi (-6.024184, 22.318251), Kisangani (0.516350, 25.221176), Katana (-2.225129, 28.831604), Kalemie (-5.919054, 29.186572), and Kapolowe (-10.939802, 26.952970). We also analysed a subset from collections obtained from Lwiro (-2.244097, 28.815232),

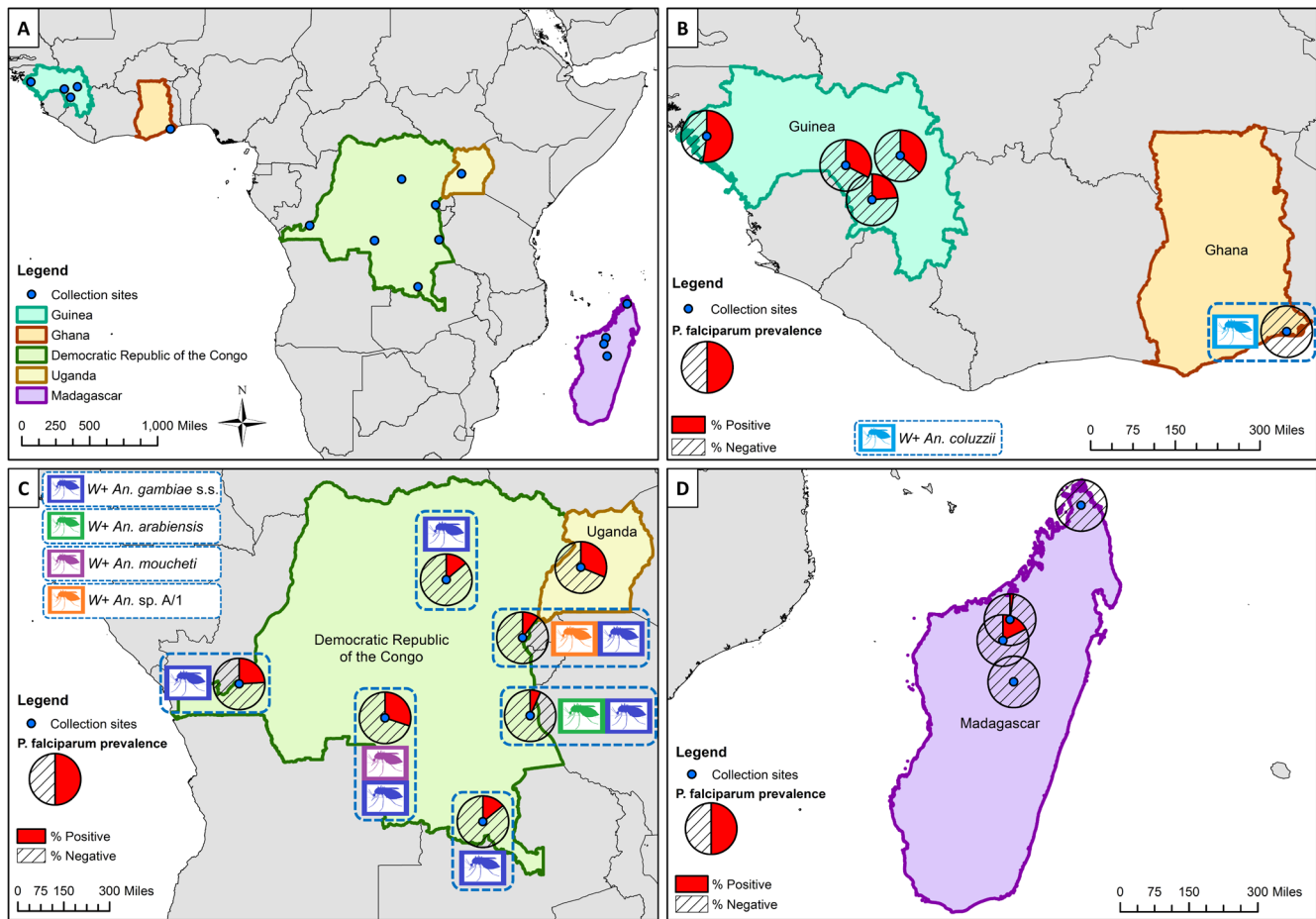


Figure 1. Locations of *Anopheles* species collections (including *Wolbachia*-infected species) and *P. falciparum* malaria prevalence rates in mosquitoes (across all species for each location). (A) Overall map showing the five malaria-endemic countries where mosquito collections were undertaken. (B) High *P. falciparum* prevalence rates in Guinea, and *Wolbachia*-infected *An. coluzzii* from Ghana (no *P. falciparum* detected). (C) *Wolbachia* strains in *An. gambiae* s.s., *An. arabiensis*, *An. species A* and *An. moucheti* from Democratic Republic of the Congo (DRC) and variable *P. falciparum* prevalence rate in DRC and Uganda. (D) Low *P. falciparum* infection rates in Madagascar and no evidence of resident *Wolbachia* strains. (W+; *Wolbachia* detected in this species).

a village near Katana, collected between September and October 2015. A combination of CDC light traps, pyrethrum spray catches and human landing catches were undertaken in Butemba, Kyankwanzi District in mid-western Uganda (1.1068444, 31.5910085) in August and September 2013, and June 2014. CDC light trap catches were undertaken in May 2017 in Dogo in Ada, Greater Accra, Ghana (5.874861111, 0.560611111). In Madagascar, sampling was undertaken in June 2016 at four sites: Anivorano Nord, located in the Northern domain, (-12.7645000, 49.2386944); Ambomiharina, Western domain, (-16.3672778, 46.9928889); Antafia, Western domain, (-17.0271667, 46.7671389); and Ambohimarina, Central domain, (-18.3329444, 47.1092500). Trapping consisted of CDC light traps and a net trap baited with Zebu (local species of cattle) to attract zoophilic species⁴⁴.

DNA extraction and species identification

DNA was extracted from individual whole mosquitoes or abdomens using QIAGEN DNeasy Blood and Tissue Kits

according to manufacturer's instructions. DNA extracts were eluted in a final volume of 100 μ l and stored at -20°C . Species identification was initially undertaken using morphological keys followed by diagnostic species-specific PCR assays to distinguish between the morphologically indistinguishable sibling mosquito species of the *An. gambiae*^{45–47} and *An. funestus* complexes⁴⁸. To determine species identification for samples of interest and samples that could not be identified by species-specific PCR, Sanger sequences were generated from *ITS2* PCR products⁴⁹.

Detection of *P. falciparum* and *Asaia*

Detection of *P. falciparum* malaria was undertaken using qPCR targeting a 120-bp sequence of the *P. falciparum* cytochrome c oxidase subunit 1 (*Cox1*) mitochondrial gene⁵⁰ as preliminary trials revealed this was the optimal method for both sensitivity and specificity. Positive controls from gDNA extracted from a cultured *P. falciparum*-infected blood sample (parasitaemia of ~10%) were serially diluted to determine the threshold

limit of detection, in addition to the inclusion no template controls (NTCs). *Asaia* detection was undertaken targeting the 16S rRNA gene^{37,51}. Ct values for both *P. falciparum* and *Asaia* assays in selected *An. gambiae* extracts were normalized to Ct values for a single copy *An. gambiae rps17* housekeeping gene (accession no. AGAP004887 on www.vectorbase.org)^{52,53}. As Ct values are inversely related to the amount of amplified DNA, a higher target gene Ct: host gene Ct ratio represented a lower estimated infection level. qPCR reactions were prepared using 5 µl of FastStart SYBR Green Master mix (Roche Diagnostics), a final concentration of 1 µM of each primer, 1 µl of PCR grade water and 2 µl template DNA, to a final reaction volume of 10 µl. Prepared reactions were run on a Roche LightCycler® 96 System and amplification was followed by a dissociation curve (95°C for 10 seconds, 65°C for 60 seconds and 97°C for 1 second) to ensure the correct target sequence was being amplified. PCR results were analysed using the LightCycler® 96 software (Roche Diagnostics). A sub-selection of PCR products from each assay was sequenced to confirm correct amplification of the target gene fragment.

Wolbachia detection

Wolbachia detection was first undertaken targeting three conserved *Wolbachia* genes previously shown to amplify a wide diversity of strains; 16S rDNA gene^{40,54}, *Wolbachia* surface protein (*wsp*) gene⁵⁵ and *FtsZ* cell cycle gene⁵⁶. DNA extracted from a *Drosophila melanogaster* fly (infected with the *wMel* strain of *Wolbachia*) was used a positive control, in addition to no template controls (NTCs). The 16S rDNA⁵⁴ and *wsp*⁵⁵ gene PCR reactions were carried out in a Bio-Rad T100 Thermal Cycler using standard cycling conditions and PCR products were separated and visualised using 2% E-Gel EX agarose gels (Invitrogen) with SYBR safe and an Invitrogen E-Gel iBase Real-Time Transilluminator. *FtsZ*⁵⁶ and 16S rDNA⁴⁰ gene real time PCR reactions were prepared using 5 µl of FastStart SYBR Green Master mix (Roche Diagnostics), a final concentration of 1 µM of each primer, 1 µl of PCR grade water and 2 µl template DNA, to a final reaction volume of 10 µl. Prepared reactions were run on a Roche LightCycler® 96 System for 15 minutes at 95°C, followed by 40 cycles of 95°C for 15 seconds and 58°C for 30 seconds. Amplification was followed by a dissociation curve (95°C for 10 seconds, 65°C for 60 seconds and 97°C for 1 second) to ensure the correct target sequence was being amplified. PCR results were analysed using the LightCycler® 96 software (Roche Diagnostics). To estimate *Wolbachia* densities across multiple *Anopheles* mosquito species, *ftsZ* and 16S qPCR Ct values were compared to total dsDNA extracted, measured using an Invitrogen Qubit 4 fluorometer. A serial dilution series of a known *Wolbachia*-infected mosquito DNA extract was used to correlate Ct values and amount of amplified target product.

Wolbachia multilocus strain typing (MLST)

MLST was undertaken to characterize *Wolbachia* strains using the sequences of five conserved genes as molecular markers to genotype each strain. In brief, 450-500 base pair fragments of the *gatB*, *coxA*, *hcpA*, *ftsZ* and *fbpA* *Wolbachia* genes were amplified from individual *Wolbachia*-infected mosquitoes using

previously optimised protocols⁵⁷. A *Cx. pipiens* gDNA extraction (previously shown to be infected with the *wPip* strain of *Wolbachia*) was used a positive control for each PCR run, in addition to no template controls (NTCs). If no amplification was detected using standard primers, further PCR analysis was undertaken using degenerate primers⁵⁷. PCR products were separated and visualised using 2% E-Gel EX agarose gels (Invitrogen) with SYBR safe and an Invitrogen E-Gel iBase Real-Time Transilluminator. PCR products were submitted to Source BioScience (Source BioScience Plc, Nottingham, UK) for PCR reaction clean-up, followed by Sanger sequencing to generate both forward and reverse reads. Sequencing analysis was carried out in MEGA7⁵⁸ as follows. Both chromatograms (forward and reverse traces) from each sample was manually checked, edited, and trimmed as required, followed by alignment with ClustalW and checking to produce consensus sequences. Consensus sequences were used to perform nucleotide BLAST (NCBI) database queries, and searches against the *Wolbachia* MLST database⁵⁹. If a sequence produced an exact match in the MLST database we assigned the appropriate allele number, otherwise we obtained a new allele number for each novel gene locus sequence through submission of the FASTA and raw trace files on the *Wolbachia* MLST website for new allele assignment and inclusion within the database. Full consensus sequences were also submitted to GenBank and assigned accession numbers. The Sanger sequencing traces from the *wsp* gene were also treated in the same way and analysed alongside the MLST gene locus scheme, as an additional marker for strain typing.

Phylogenetic analysis

Alignments were constructed in MEGA7 by ClustalW to include all relevant and available sequences highlighted through searches on the BLAST and *Wolbachia* MLST databases. Maximum Likelihood phylogenetic trees were constructed from Sanger sequences as follows. The evolutionary history was inferred by using the Maximum Likelihood method based on the Tamura-Nei model⁶⁰. The tree with the highest log likelihood in each case is shown. The percentage of trees in which the associated taxa clustered together is shown next to the branches. Initial tree(s) for the heuristic search were obtained automatically by applying Neighbor-Join and BioNJ algorithms to a matrix of pairwise distances estimated using the Maximum Composite Likelihood (MCL) approach, and then selecting the topology with superior log likelihood value. The trees are drawn to scale, with branch lengths measured in the number of substitutions per site. Codon positions included were 1st+2nd+3rd+Noncoding. All positions containing gaps and missing data were eliminated. The phylogeny test was by Bootstrap method with 1000 replications. Evolutionary analyses were conducted in MEGA7⁵⁸.

Microbiome analysis

The microbiomes of selected individual *Anopheles* were analysed using barcoded high-throughput amplicon sequencing of the bacterial 16S rRNA gene. Sequencing libraries for each isolate were generated using universal 16S rRNA V3-V4 region primers⁶¹ in accordance with Illumina 16S rRNA

metagenomic sequencing library protocols. The samples were barcoded for multiplexing using Nextera XT Index Kit v2. Sequencing was performed on an Illumina MiSeq instrument using a MiSeq Reagent Kit v2 (500-cycles). Quality control and taxonomical assignment of the resultant reads were performed using [CLC Genomics Workbench 8.0.1 Microbial Genomics Module](#). Low quality reads containing nucleotides with quality threshold below 0.05 (using the modified Richard Mott algorithm), as well as reads with two or more unknown nucleotides were removed from analysis. Additionally, reads were trimmed to remove sequenced Nextera adapters. Reference-based operational taxonomic unit (OTU) picking was performed using the [SILVA SSU v128 97% database](#)⁶². Sequences present in more than one copy but not clustered to the database were then placed into *de novo* OTUs (97% similarity)

and aligned against the reference database with 80% similarity threshold to assign the “closest” taxonomical name where possible. Chimeras were removed from the dataset if the absolute crossover cost was 3 using a k-mer size of 6. Alpha diversity was measured using Shannon entropy (OTU level).

Statistical analysis

Fisher’s exact *post hoc* test in Graphpad Prism 7 was used to compare infection rates. Normalised qPCR Ct ratios were compared using unpaired t-tests in GraphPad Prism 7.

Results

Mosquito species and resident *Wolbachia* strains

Anopheles species composition varied depending on country and mosquito collection sites ([Table 1](#)). We detected *Wolbachia*

Table 1. *Anopheles* mosquito species collected from locations within five malaria-endemic countries and *P. falciparum*, *Wolbachia* and *Asaia* prevalence rates. Species in different locations infected with *Wolbachia* are in bold.

Country	Location	Species	Individuals	Infection prevalence (%)		
				<i>P. falciparum</i>	<i>Wolbachia</i>	<i>Asaia</i>
Guinea	Faranah	<i>An. gambiae</i> s.s.	48	43.8	0.0	50.0
		<i>An. arabiensis</i>	7	0.0	0.0	100.0
		<i>An. nili</i>	9	0.0	0.0	100.0
	Kissidougou	<i>An. gambiae</i> s.s.	44	18.2	0.0	100.0
		<i>An. species O</i>	1	0.0	0.0	100.0
	Boke	<i>An. gambiae</i> s.s.	21	52.4	0.0	28.6
	Kankan	<i>An. gambiae</i> s.s.	48	38.1	0.0	56.3
<i>An. sp. unknown</i>		1	0.0	0.0	0.0	
DRC	Mikalayi	<i>An. gambiae</i> s.s.	16	29.4	11.8	11.8
		<i>An. moucheti</i>	1	0.0	100.0	0.0
		<i>An. funestus</i> s.s.	13	30.8	0.0	15.4
	Kisangani	<i>An. gambiae</i> s.s.	25	12.0	8.0	20.0
		<i>An. arabiensis</i>	4	25.0	0.0	0.0
	Katana	<i>An. gambiae</i> s.s.	23	8.7	8.7	4.4
		<i>An. funestus</i> s.s.	5	0.0	0.0	0.0
		<i>An. species A</i>	2	50.0	100.0	0.0
	Lwiro (Katana)	<i>An. species A</i>*	33	N/A	90.1	N/A
	Kapolowe	<i>An. gambiae</i> s.s.	9	11.1	11.1	0.0
		<i>An. funestus</i> s.s.	5	20.0	0.0	0.0
	Kalemie	<i>An. gambiae</i> s.s.	28	7.1	21.4	3.6
		<i>An. arabiensis</i>	2	0.0	50.0	0.0
	Kinshasa	<i>An. gambiae</i> s.s.	27	22.2	14.8	3.7
<i>An. funestus</i> s.s.		2	50.0	0.0	0.0	
Ghana	Dogo	<i>An. coluzzii</i>	286	0.0	4.2	32.9
		<i>An. melas</i>	1	0.0	0.0	100.00
Uganda	Butemba (2013)	<i>An. gambiae</i> s.s.	57	19.3	0.0	80.7
	Butemba (2014)	<i>An. gambiae</i> s.s.	135	36.3	0.0	48.1
		<i>An. arabiensis</i>	1	0.0	0.0	0.0

Country	Location	Species	Individuals	Infection prevalence (%)		
				<i>P. falciparum</i>	<i>Wolbachia</i>	<i>Asaia</i>
Madagascar	Anivorano Nord	<i>An. funestus</i>	8	0.0	0.0	25.0
		<i>An. gambiae</i> s.s.	3	0.0	0.0	33.3
		<i>An. arabiensis</i>	2	0.0	0.0	100.0
		<i>An. mascarensis</i>	38	0.0	0.0	39.5
		<i>An. maculipalpis</i>	9	0.0	0.0	11.1
		<i>An. coustani</i>	22	0.0	0.0	27.3
		<i>An. rufipes</i>	11	0.0	0.0	27.3
	Ambomiharina	<i>An. funestus</i>	11	0.0	0.0	81.8
		<i>An. pharoensis</i>	7	0.0	0.0	42.9
		<i>An. rufipes</i>	21	9.5	0.0	61.9
		<i>An. maculipalpis</i>	9	0.0	0.0	0.0
		<i>An. gambiae</i> s.s.	8	0.0	0.0	0.0
		<i>An. coustani</i>	24	0.0	0.0	25.0
		<i>An. squamosus</i>	10	0.0	0.0	20.0
		<i>An. mascarensis</i>	1	0.0	0.0	0.0
	Antafia	<i>An. pauliani</i>	3	0.0	0.0	100.0
		<i>An. gambiae</i> s.s.	11	27.3	0.0	45.5
		<i>An. pauliani</i>	2	0.0	0.0	50.0
		<i>An. rufipes</i>	2	0.0	0.0	50.0
	Ambohimarina	<i>An. mascarensis</i>	2	0.0	0.0	0.0
		<i>An. funestus</i>	1	0.0	0.0	0.0
		<i>An. gambiae</i> s.s.	1	0.0	0.0	0.0
		<i>An. arabiensis</i>	2	0.0	0.0	0.0
		<i>An. rufipes</i>	7	0.0	0.0	42.9
		<i>An. coustani</i>	18	0.0	0.0	11.1
		<i>An. maculipalpis</i>	8	0.0	0.0	12.5
	<i>An. squamosus</i>	46	0.0	0.0	4.3	
	<i>An. mascarensis</i>	11	0.0	0.0	0.0	

*Adult individuals from Lwiro (Katana), DRC were collected as both larvae and adults so have been excluded from *P. falciparum* and *Asaia* prevalence analysis.

in *An. coluzzii* (previously named M molecular form) mosquitoes from Ghana (prevalence of 4% - termed *w*Anga-Ghana) and *An. gambiae* s.s. (previously named S molecular form) from all six collection sites in DRC (prevalence range of 8–24%) in addition to a single infected *An. arabiensis* from Kalemie in DRC (Figure 1 and Table 1). The molecular phylogeny of the *ITS2* gene of *Anopheles gambiae* s.l. complex individuals (including both *Wolbachia*-infected and uninfected individuals analysed in our study) confirmed molecular species identifications made using species-specific PCR assays (Figure 2). Novel resident *Wolbachia* infections were detected in two additional *Anopheles* species from DRC; *An. moucheti* (termed *w*AnM) from Mikalayi, and *An. species A* (termed *w*AnsA) from Katana. Additionally, we screened adult female mosquitoes of *An. species A* (collected as larvae and adults) from Lwiro,

a village near Katana in DRC, and detected *Wolbachia* in 30/33 (91%), indicating this resident *w*AnsA strain has a high infection prevalence in populations in this region. The molecular phylogeny of the *ITS2* gene revealed *Wolbachia*-infected individuals from Lwiro and Katana are the same *An. species A* (Figure 3) previously collected in Eastern Zambia⁴³ and Western Kenya⁶³. All *ITS2* sequences were deposited in GenBank (accession numbers MH598414–MH598445; listed in Supplementary Table 1).

Wolbachia strain typing

Phylogenetic analysis of the *16S rRNA* gene demonstrated that the *16S* sequences for these strains cluster with other Super-group B strains such as *w*Pip (99–100% nucleotide identity) (Figure 4a). When compared to the resident *Wolbachia* strains

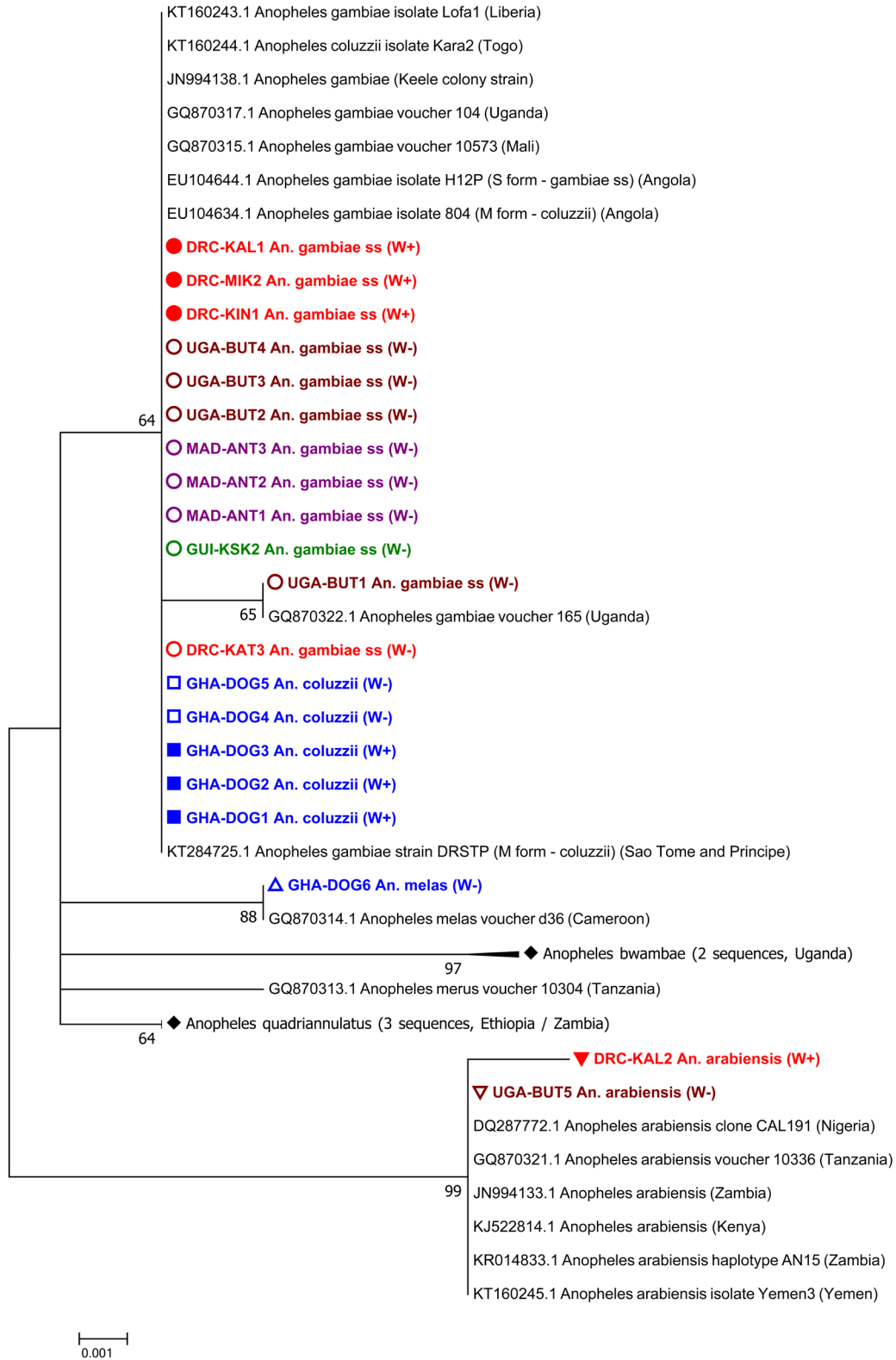


Figure 2. Maximum Likelihood molecular phylogenetic analysis of *Anopheles gambiae* complex *ITS2* sequences from field-collected mosquitoes. The tree with the highest log likelihood (-785.65) is shown. The tree is drawn to scale, with branch lengths measured in the number of substitutions per site. The analysis involved 42 nucleotide sequences. There were a total of 475 positions in the final dataset. W+; individual was *Wolbachia* positive, W-; individual was *Wolbachia* negative. DRC, Democratic Republic of the Congo (red); KAL, Kalemie; MIK, Mikalayi; KIN, Kinshasa; KAT, Katana; GHA, Ghana (blue); DOG, Dogo; GUI, Guinea (green); KSK, Kissidougou; MAD, Madagascar (purple); ANT, Antafia; UGA, Uganda (maroon); BUT, Butemba.

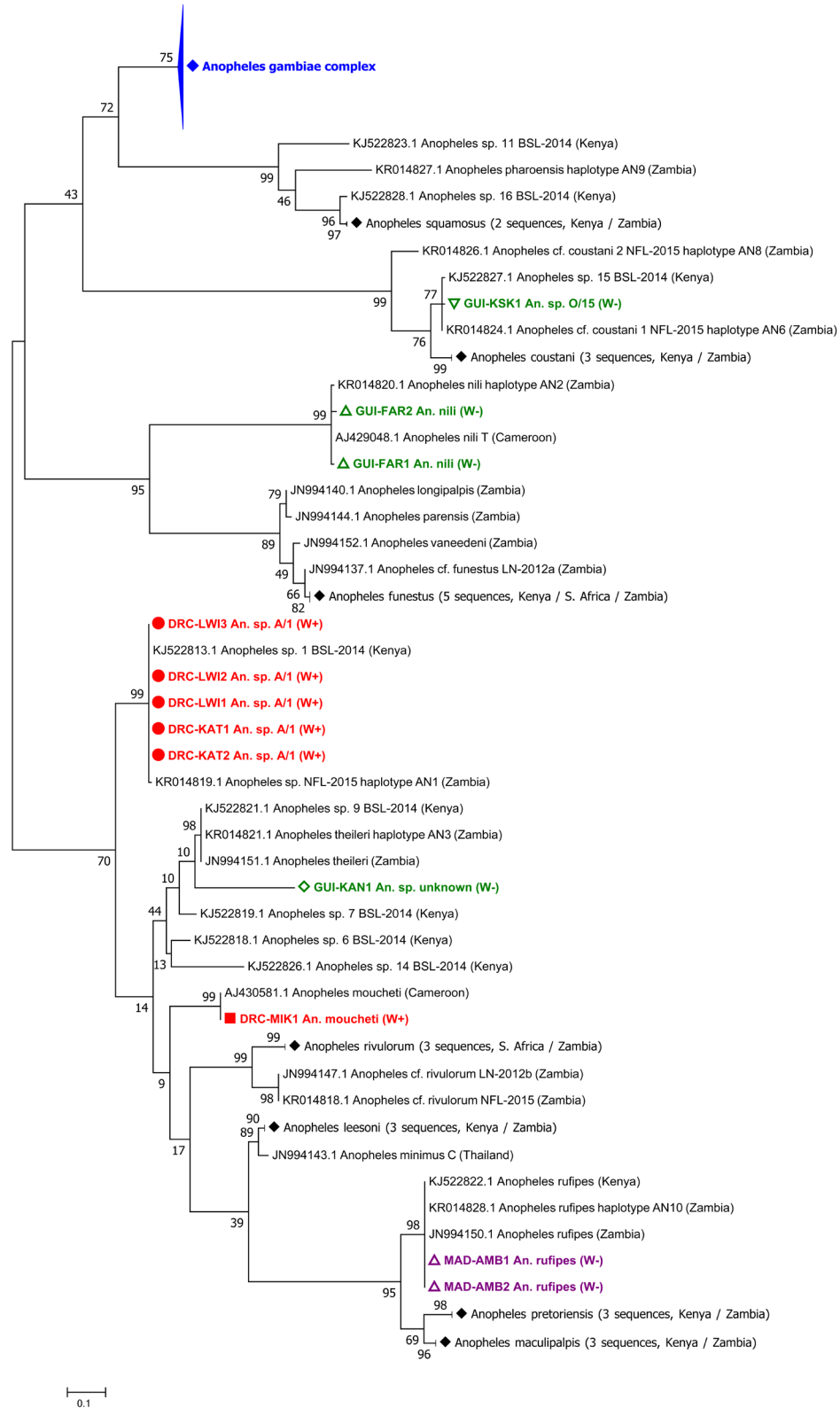


Figure 3. Maximum Likelihood molecular phylogenetic analysis of *Anopheles* ITS2 sequences from field-collected mosquitoes outside of the *An. gambiae* s.l. complex. The tree with the highest log likelihood (-3084.12) is shown. The tree is drawn to scale, with branch lengths measured in the number of substitutions per site. The analysis involved 118 nucleotide sequences. There were a total of 156 positions in the final dataset. W+; individual was *Wolbachia* positive, W-; individual was *Wolbachia* negative. DRC, Democratic Republic of the Congo (red); KAT, Katana; LWI, Lwiro; MIK, Mikalay; GUI, Guinea (green); FAR, Faranah; KAN, Kankan; KSK, Kissidougou; MAD, Madagascar (purple); AMB, Ambomiharina.

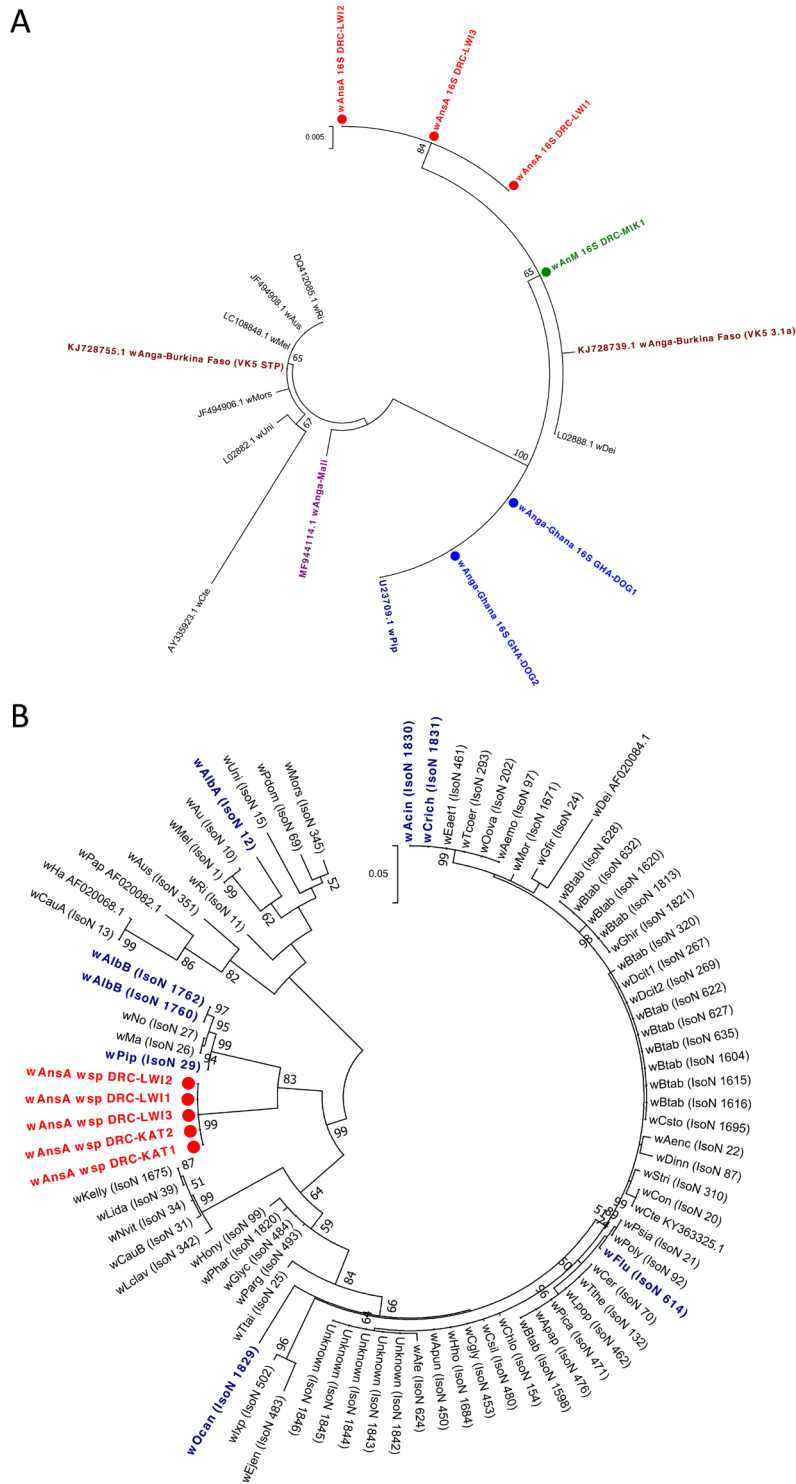


Figure 4. Resident *Wolbachia* strain phylogenetic analysis using 16S *rRNA* and *wsp* genes. (A) Maximum Likelihood molecular phylogenetic analysis of the 16S *rRNA* gene for resident strains in *An. coluzzii* (*wAnga-Ghana*; blue), *An. moucheti* (*wAnM*; green) and *An. species A* (*wAnsaA*; red). The tree with the highest log likelihood (-660.03) is shown. The tree is drawn to scale, with branch lengths measured in the number of substitutions per site. The analysis involved 17 nucleotide sequences. There were a total of 333 positions in the final dataset. Accession numbers of additional sequences obtained from GenBank are shown, including *wPip* (navy blue), *wAnga-Mali* (purple) and *wAnga-Burkina Faso* strains (maroon). **(B)** Maximum Likelihood molecular phylogenetic analysis of the *wsp* gene for *wAnsaA*-infected representative individuals from the DRC (red). The tree with the highest log likelihood (-3663.41) is shown. The tree is drawn to scale, with branch lengths measured in the number of substitutions per site. The analysis involved 83 nucleotide sequences. There were a total of 443 positions in the final dataset. Reference numbers of additional sequences obtained from the MLST database or GenBank (accession number) are shown. Strains isolated from mosquitoes are highlighted in navy blue. KAT, Katana; LWI, Lwiro; IsoN, Isolate number.

in *An. gambiae* s.l. populations from Mali⁴⁰ and Burkina Faso³⁹, *w*Anga-Ghana is more closely related to the Supergroup B strain of *w*Anga from Burkina Faso. Although a resident strain was detected in *An. gambiae* s.s. and a single *An. arabiensis* from DRC through amplification of *16S rRNA* fragments using two independent PCR assays^{40,54}, we were unable to obtain *16S* sequences of sufficient quality to allow further analysis. The *Wolbachia* *wsp* gene has been evolving at a faster rate and provides more informative strain phylogenies⁵⁵. As expected, however, and similar to *Wolbachia*-infected *An. gambiae* s.l. from Burkina Faso³⁹ and Mali⁴⁰, a fragment of the *wsp* gene was not amplified from *Wolbachia*-positive samples from *An. gambiae* s.s., *An. arabiensis* and *An. coluzzii*. Similarly, no *wsp* gene fragment amplification occurred from *w*AnM-infected *An. moucheti*. However, *wsp* sequences were obtained from both *Wolbachia*-infected individuals of *An. species A* from Katana. We also analysed the *wsp* sequences of 22 specimens of *An. species A* from Lwiro (near Katana) and found identical sequences to the two individuals from Katana. Phylogenetic analysis of the *wsp* sequences obtained for the *w*AnsA strain, for both individuals from Katana (*w*AnsA *wsp* DRC-KAT1, *w*AnsA *wsp* DRC-KAT2) and three representative individuals from Lwiro (*w*AnsA *wsp* DRC-LWI1, *w*AnsA *wsp* DRC-LWI2, *w*AnsA *wsp* DRC-LWI3) indicates *w*AnsA is most closely related to *Wolbachia* strains of Supergroup B (such as *w*Pip, *w*AlbB, *w*Ma and *w*No), which is consistent with *16S rRNA* phylogeny. However, the improved phylogenetic resolution provided by *wsp* indicates they cluster separately (Figure 4b). Typing of the *w*AnsA *wsp* nucleotide sequences highlighted that there were no exact matches to *wsp* alleles currently in the *Wolbachia* MLST database. All *Wolbachia* *16S* and *wsp* sequences of sufficient quality to generate a consensus were deposited into GenBank (accession numbers MH605275–MH605285; listed in Supplementary Table 2).

MLST was undertaken to provide more accurate strain phylogenies. This was done for the novel *Wolbachia* strains *w*AnM and *w*AnsA in addition to the resident *w*Anga-Ghana strain in *An. coluzzii* from Ghana. We were unable to amplify any of the

five MLST genes from *Wolbachia*-infected *An. gambiae* s.s. and *An. arabiensis* from DRC (likely due to low infection densities). New alleles for all five MLST gene loci (sequences differed from those currently present in the MLST database) and novel allelic profiles confirm the diversity of these novel *Wolbachia* strains (Table 2). The phylogeny of these three novel strains based on concatenated sequences of all five MLST gene loci confirms they cluster within Supergroup B (Figure 5a). This also demonstrates the novelty as comparison with a wide range of strains (including all isolates highlighted through partial matching during typing of each locus) shows these strains are distinct from currently available sequences (Figure 5a and Table 2). The concatenated phylogeny indicates that *w*AnM is most closely related to a Hemiptera strain: Isolate number 1616 found in *Bemisia tabaci* in Uganda, and a Coleoptera strain: Isolate number 20 found in *Tribolium confusum*. Concatenation of the MLST loci also indicates *w*AnsA is closest to a group containing various Lepidoptera and Hymenoptera strains from multiple countries in Asia, Europe and America, as well as two mosquito strains: Isolate numbers 1830 and 1831, found in *Aedes cinereus* and *Coquillettia richardii* in Russia. This highlights the lack of concordance between *Wolbachia* strain phylogeny and their insect hosts across diverse geographical regions. We also found evidence of potential strain variants in *w*AnsA through variable MLST gene fragment amplification and resulting closest-match allele numbers.

A second *w*AnsA-infected sample, *An. sp.* A/I (W+) DRC-KAT2, only successfully amplified *hcpA* and *coxA* gene fragments and although identical sequences were obtained for *wsp* (Figure 4b) and *hcpA*, genetic diversity was seen in the *coxA* sequences, with typing indicating a different, but still novel allele for the *coxA* sequence from this individual (*w*AnsA(2) *coxA* DRC-KAT2) (Figure 5b). Further analysis of the *coxA* sequence as part of MLST allele submission from this variant suggested the possibility of a double infection, where two differing strains of *Wolbachia* are present. MLST gene fragment amplification was also variable for *w*Anga-Ghana-infected *An. coluzzii*, requiring two individuals to generate the five

Table 2. Novel resident *Wolbachia* strain multilocus sequence typing (MLST) gene allelic profiles. Novel allele numbers (in bold) assigned by the *Wolbachia* MLST database for strains from *An. species A* (*w*AnsA) and *An. moucheti* (*w*AnM) are shown, alongside the novel allelic profile from *An. coluzzii* (*w*Anga-Ghana), comprising exact matches to existing alleles present in the database for each gene locus.

Mosquito species	<i>Wolbachia</i> strain	<i>Wolbachia</i> MLST gene allele numbers				
		<i>gatB</i>	<i>coxA</i>	<i>hcpA</i>	<i>ftsZ</i>	<i>fbpA</i>
<i>An. species A</i>	<i>w</i> AnsA	279	274	302	240	445
<i>An. moucheti</i>	<i>w</i> AnM	280	275	303	241	446
<i>An. coluzzii</i>	<i>w</i> Anga-Ghana	9	64	3*	177	4

*Alternative degenerate primers (set 3) were used to generate sequence from another *An. coluzzii* individual from the same location to complete the full allelic profile.

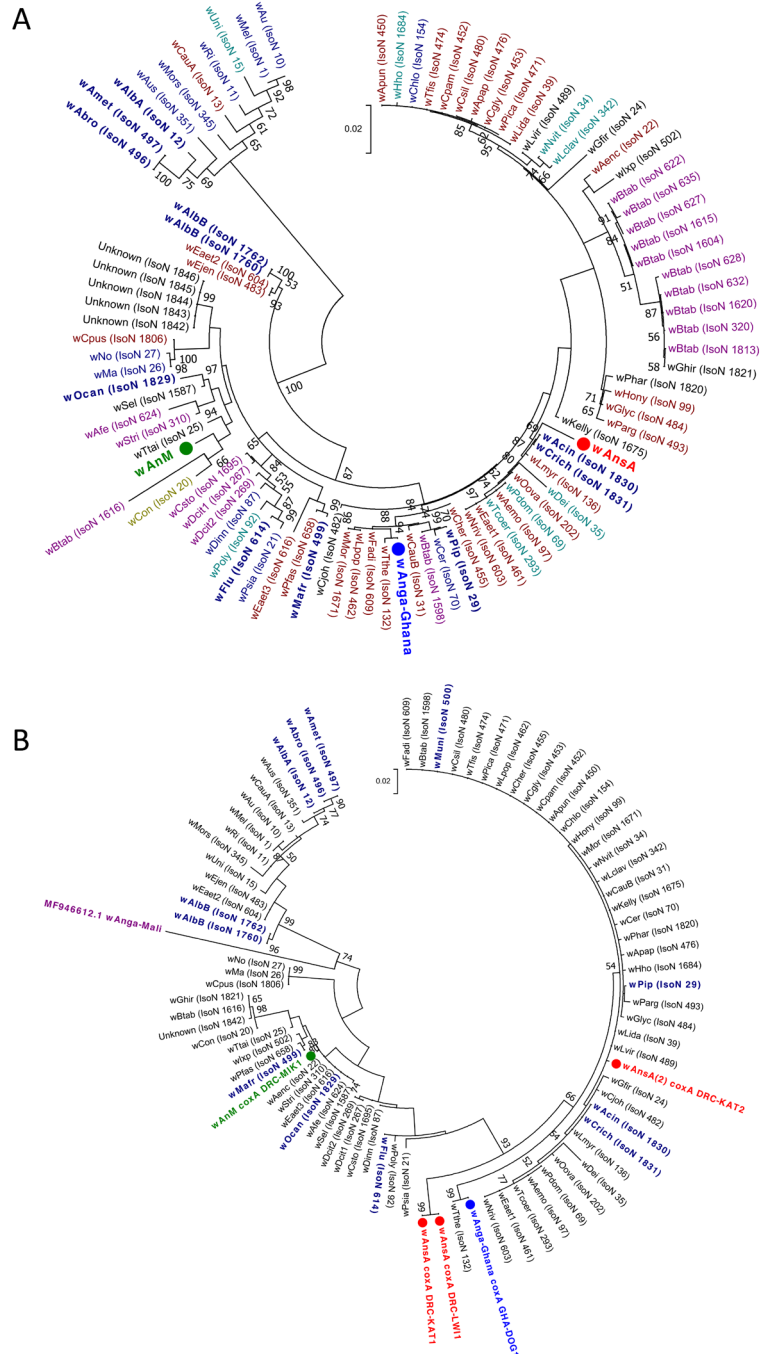


Figure 5. *Wolbachia* multilocus sequence typing (MLST) phylogenetic analysis of resident *Wolbachia* strains in *An. coluzzii*, *An. moucheti* and *An. species A*. (A) Maximum Likelihood molecular phylogenetic analysis from concatenation of all five MLST gene loci for resident *Wolbachia* strains from *An. coluzzii* (*wAnGA-Ghana*; blue), *An. moucheti* (*wAnM*; green) and *An. species A* (*wAnSA*; red). The tree with the highest log likelihood (-10606.13) is shown and drawn to scale, with branch lengths measured in the number of substitutions per site. The analysis involved 94 nucleotide sequences. There were a total of 2067 positions in the final dataset. Concatenated sequence data from *Wolbachia* strains downloaded from MLST database for comparison shown with isolate numbers in brackets (IsoN). *Wolbachia* strains isolated from mosquito species highlighted in navy blue, bold. Strains isolated from other Dipteran species are shown in navy blue, from Coleoptera in olive green, from Hemiptera in purple, from Hymenoptera in teal blue, from Lepidoptera in maroon and from other, or unknown orders in black. (B) Maximum Likelihood molecular phylogenetic analysis for *coxA* gene locus for resident *Wolbachia* strains from *An. coluzzii* (*wAnGA-Ghana*; blue), *An. moucheti* (*wAnM*; green) and *An. species A* (*wAnSA* and *wAnSA(2)*; red). The tree with the highest log likelihood (-1921.11) is shown and drawn to scale, with branch lengths measured in the number of substitutions per site. The analysis involved 84 nucleotide sequences. There were a total of 402 positions in the final dataset. Sequence data for the *coxA* locus from *Wolbachia* strains downloaded from MLST database for comparison shown in black and navy blue with isolate numbers (IsoN) from MLST database shown in brackets. *Wolbachia* strains isolated from mosquito species highlighted in navy blue. GenBank sequence for *wAnGA-Mali coxA* shown in maroon with accession number.

MLST gene sequences, and for the *hcpA* locus, more degenerate primers (*hcpA_F3/hcpA_R3*) were required to generate sequence of sufficient quality for analysis. This is likely due to the low density of this strain potentially influencing the ability to successfully amplify all MLST genes, in addition to the possibility of genetic variation in primer binding regions. Despite the sequences generated for this strain producing exact matches with alleles in the database for each of the five gene loci, the resultant allelic profile, and therefore strain type, did not produce a match, showing this *wAnga-Ghana* strain is also a novel strain type. The closest matches to the *wAnga-Ghana* allelic profile were with strains from two Lepidopteran species: Isolate number 609 found in *Fabriciana adippe* from Russia, and Isolate number 658 found in *Pammene fasciana* from Greece, but each of these only produced a match for three out of the five loci. The concatenated phylogeny for this strain (Figure 5a) indicates that across the 5 MLST loci, *wAnga-Ghana* is actually most closely related to a Lepidopteran strain found in *Thersamonia thersamon* in Russia (Isolate number 132). The phylogeny of *Wolbachia* strains based on the *coxA* gene (Figure 5b) highlights the genetic diversity of both the *wAnsA* strain variants and also *wAnga-Ghana* compared to the *wAnga-Mali* strain⁴⁰; *coxA* gene sequences are not available for *wAnga* strains from Burkina Faso³⁹. All *Wolbachia* MLST sequences were deposited into GenBank (accession numbers MH605286–MH605305; listed in Supplementary Table 3).

Resident strain densities and relative abundance

The relative densities of *Wolbachia* strains were estimated using qPCR targeting the *ftsZ*³⁶ and 16S rRNA⁴⁰ genes. qPCR analysis of *ftsZ* and 16S rRNA indicated the amount of *Wolbachia* detected in *wAnsA*-infected and *wAnM*-infected females was approximately 1000-fold higher (Ct values 20-22) than

Wolbachia-infected *An. gambiae s.s.*, *An. arabiensis* and *wAnga-Ghana*-infected *An. coluzzii* (Ct values 30-33). To account for variation in mosquito body size and DNA extraction efficiency, we compared the total amount of DNA for *Wolbachia*-infected mosquito extracts and conversely, we found less total DNA in the *wAnsA*-infected extract (1.36 ng/μl) and the *An. moucheti* (*wAnM*-infected) extract (5.85 ng/μl) compared to the mean of 6.64 ± 2.33 ng/μl for *wAnga-Ghana*-infected *An. coluzzii*. To estimate the relative abundance of resident *Wolbachia* strains in comparison to other bacterial species, we sequenced the bacterial microbiome using 16S rRNA amplicon sequencing on *Wolbachia*-infected individuals. We found *wAnsA*, *wAnsA(2)* and *wAnM* *Wolbachia* strains were the dominant OTUs of these mosquito species (Figure 6). In contrast, the lower-density infection *wAnga-Ghana* strain represented only ~10% of the OTUs within the microbiome.

P. falciparum, *Wolbachia* and *Asaia* prevalence

The prevalence of *P. falciparum* in female mosquitoes was extremely variable across countries and collection locations (Figure 1 and Table 1) with very high prevalence recorded in *An. gambiae s.s.* from villages close to Boke (52%) and Faranah (44%) in Guinea. Despite the collection of other *Anopheles* species in Guinea, *An. gambiae s.s.* was the only species to have detectable malaria parasite infections. In contrast, *P. falciparum* was detected in multiple major vector species from DRC, including *An. gambiae s.s.*, *An. arabiensis* and *An. funestus s.s.* A high prevalence of *P. falciparum* was also detected in *An. gambiae s.s.* from Uganda for both collection years; 19% for 2013 and 36% for 2014. In contrast, no *P. falciparum* infections were detected in any of the *An. coluzzii* or *An. melas* collected in Ghana. In Madagascar, *P. falciparum* was detected in only two species; *An. gambiae s.s.* and *An. rufipes*. We compared the

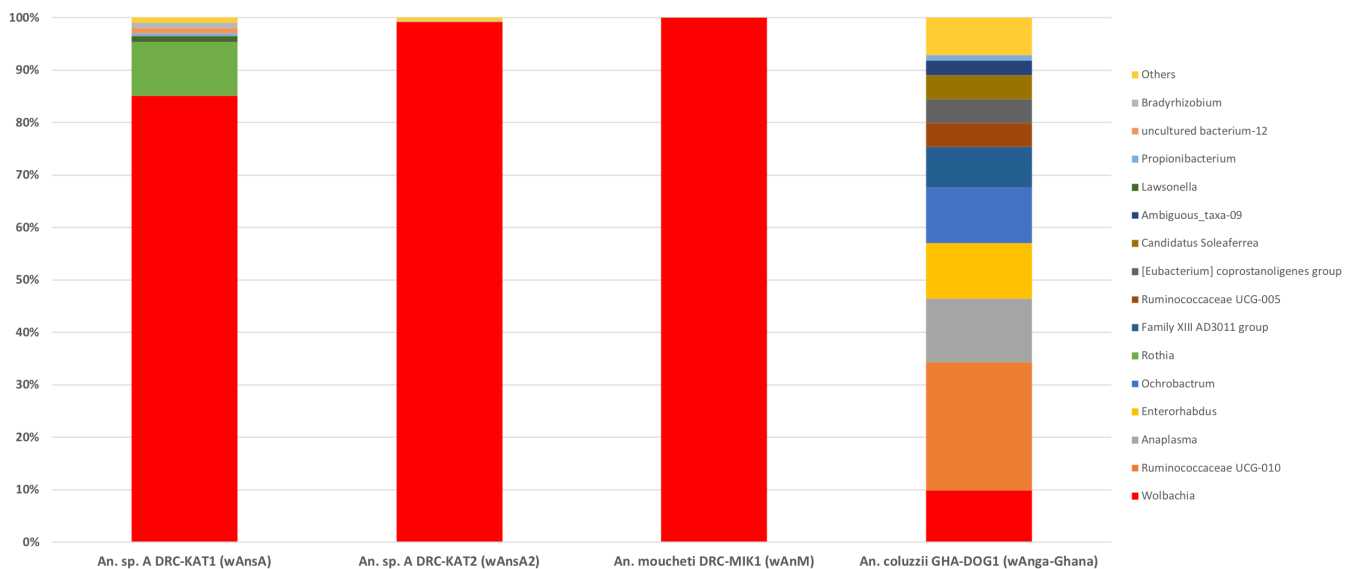


Figure 6. The relative abundance of resident *Wolbachia* strains in *Anopheles*. Bacterial genus level taxonomy was assigned to operational taxonomic units clustered with a 97% cut-off using the SILVA SSU v128 97% database, and individual genera comprising less than 1% of total abundance was merged into “Others”.

overall *P. falciparum* infection rates in *An. gambiae* s.s. mosquitoes collected across all locations from DRC to determine if there was any correlation with the presence of the low density wAnga-DRC *Wolbachia* resident strain. Overall, of the 128 mosquitoes collected, only 1.56% (n=2) had detectable *Wolbachia-Plasmodium* co-infections, compared to 10.16% (n=13) where we only detected *Wolbachia*. A further 11.72% (n=15) were only PCR-positive for *P. falciparum*. As expected, for the vast majority of mosquitoes (76.56%, n=98) we found no evidence of *Wolbachia* or *P. falciparum* present, resulting in no correlation across all samples (Fisher's exact *post hoc* test on unnormalized data, two-tailed, $P=0.999$). Interestingly, one *An. species 'A'* female from Katana was infected with *P. falciparum*.

For all *Wolbachia*-infected females collected in our study (including *An. coluzzii* from Ghana and novel resident strains in *An. moucheti* and *An. species A*), we did not detect the presence of *Asaia*. No resident *Wolbachia* strain infections were detected in *Anopheles* mosquitoes from Guinea, Uganda or Madagascar. However, high *Asaia* and malaria parasite prevalence rates were present in *Anopheles* mosquitoes from Uganda and Guinea (including multiple species in all four sites in Guinea). We compared the overall *P. falciparum* infection rates in *An. gambiae* s.s. collected across all locations from Guinea, with and without *Asaia* bacteria, and found no overall correlation (Fisher's exact *post hoc* test on unnormalized data, two-tailed, $P=0.4902$). There was also no overall correlation between *Asaia* and *P. falciparum* infections in *An. gambiae* s.s. from Uganda for both 2013 (Fisher's exact *post hoc* test on unnormalized data, two-tailed, $P=0.601$) and 2014 (Fisher's exact *post hoc* test on unnormalized data, two-tailed, $P=0.282$).

Asaia can be environmentally acquired at all life stages but can also have the potential to be vertically and horizontally transmitted between individual mosquitoes. Therefore, we performed 16S microbiome analysis on a sub-sample of *Asaia*-infected *An. gambiae* s.s. from Kissidougou (Guinea), a location in which high levels of *Asaia* were detected by qPCR (mean *Asaia* Ct = 17.84 ± 2.27)⁶⁴. *Asaia* in these individuals is the dominant bacterial species present (Figure 7a) but in Uganda we detected much lower levels of *Asaia* (qPCR mean Ct = 33.33 ± 0.19) and this was reflected in *Asaia* not being a dominant species (Figure 7b). The alpha and beta diversity of *An. gambiae* s.s. from Kissidougou, Guinea and Butemba, Uganda shows much more overall diversity in the microbiome for Uganda individuals (Supplementary Figure 1). Interestingly, 2/5 of these individuals from Kissidougou (Guinea) were *P. falciparum*-infected compared to 3/5 individuals from Uganda. To determine if the presence of *Asaia* had a quantifiable effect on the level of *P. falciparum* detected, we normalized *P. falciparum* Ct values from qPCR (Supplementary Figure 2a) and compared gene ratios for *An. gambiae* s.s. mosquitoes from Guinea, with or without *Asaia* (Supplementary Figure 2b). Statistical analysis using student's t-tests revealed no significant difference between normalized *P. falciparum* gene ratios ($p=0.51$, $df=59$). Larger variation of Ct values was seen for *Asaia* (Supplementary Figure 2c) suggesting the

bacterial densities in individual mosquitoes were more variable than *P. falciparum* parasite infection levels.

Discussion

Malaria transmission in Sub-Saharan Africa is highly dependent on the local *Anopheles* vector species, but the primary vector complexes recognised are *An. gambiae* s.l., *An. funestus* s.l., *An. nili* s.l. and *An. moucheti* s.l.^{41,65}. *An. gambiae* s.s. and *An. coluzzii* sibling species are considered the most important malaria vectors in Sub-Saharan Africa and recent studies indicate that *An. coluzzii* extends further north, and closer to the coast than *An. gambiae* s.s. within West Africa⁶⁶. In our study, high *Plasmodium* prevalence rates in *An. gambiae* s.s. across Guinea would be consistent with high malaria parasite prevalence in humans (measured by rapid diagnostic tests) in Guéckédou prefecture, and the overall national malaria prevalence estimated to be 44% in 2013⁶⁷. However, malaria prevalence has decreased in the past few years with an overall prevalence across Guinea estimated at 15% for 2016. Although our *P. falciparum* infection prevalence rates were also high in DRC, recent studies have shown comparable levels of infection with 35% of *An. gambiae* s.l. mosquitoes infected from Kinshasa⁶⁸. We detected *P. falciparum* in *An. gambiae* s.s., *An. arabiensis*, *An. funestus* s.s. and *An. species A* from DRC. Morphological differences have been widely used for identification of malaria vectors but species complexes (such as *An. gambiae* s.l. and *An. funestus* s.l.) require species-diagnostic PCR assays. Historically, malaria parasite entomology studies in Africa have focused predominantly on species from these complexes, likely due to the fact that mosquitoes from these complexes dominate the collections⁴³. In our study, we used *ITS2* sequencing to confirm secondary vector species that were *P. falciparum*-infected given the difficulties of morphological identification and recent studies demonstrating the inaccuracy of diagnostic species PCR-based molecular identification⁶⁹. Our study is the first to report the detection of *P. falciparum* in *An. rufipes* from Madagascar; previously this species was considered a vector of *Plasmodium* species of non-human origin and has only very recently been implicated in human malaria transmission⁷⁰. However, detection of *P. falciparum* parasites in whole body mosquitoes does not confirm that the species plays a significant role in transmission. Detection could represent infected bloodmeal stages or oocysts present in the midgut wall so further studies are warranted to determine this species ability to transmit human malaria parasites.

The mosquito microbiota can modulate the mosquito immune response and bacteria present in wild *Anopheles* populations can influence malaria vector competence^{4,5}. Endosymbiotic *Wolbachia* bacteria are particularly widespread through insect populations, but they were commonly thought to be absent from *Anopheles* mosquitoes. However, the recent discovery of *Wolbachia* strains in the *An. gambiae* s.l. complex in Burkina Faso and Mali^{39,40}, in addition to our study showing infection in *Anopheles* from Ghana and DRC, suggest resident strains could be widespread across Sub-Saharan Africa. The discovery of resident strains in Burkina Faso resulted from sequencing of the 16S rRNA gene identifying *Wolbachia*

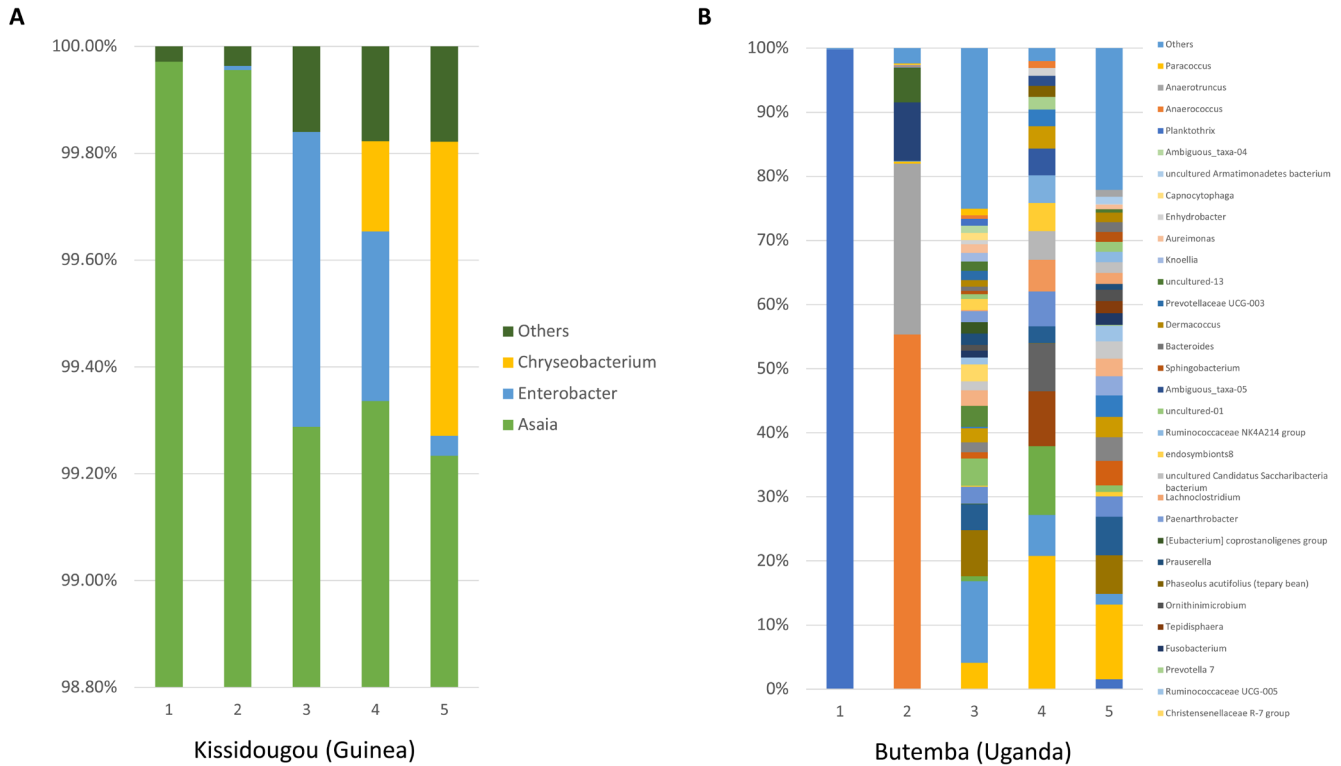


Figure 7. The relative abundance of bacteria in *An. gambiae* s.s. comparing two locations with contrasting *Asaia* infection densities. Bacterial genus level taxonomy was assigned to operational taxonomic units clustered with a 97% cut-off using the SILVA SSU v128 97% database, and individual genera comprising less than 1% of total abundance was merged into "Others".

sequences rather than screening using *Wolbachia*-specific genes³⁹. Intriguingly, *Wolbachia* infections in these mosquitoes could not be detected using conventional PCR targeting the *wsp* gene. As the *wsp* gene has often been used in previous studies to detect strains in *Anopheles* species^{25,27}, this could explain why resident strains in the *An. gambiae* s.l. complex have gone undetected until very recently. Recent similar methods using 16S rRNA amplicon sequencing to determine the overall microbiota in wild mosquito populations has provided evidence for *Wolbachia* infections in *An. gambiae* in additional villages in Burkina Faso⁷¹ and *Anopheles* species collected in Illinois, USA⁷². Our study describing resident *Wolbachia* strains in numerous species of *Anopheles* malaria vectors also highlights the potential for *Wolbachia* to be influencing malaria transmission, as postulated by previous studies^{39,40,73}. Although no significant correlation was present for malaria and *Wolbachia* prevalence in the 128 *An. gambiae* s.s. individuals from DRC, we only detected co-infections in two individuals compared to 13 and 15 individuals infected only with *Wolbachia* or *P. falciparum*, respectively. As the majority (77%) of samples had neither detectable *Wolbachia* resident strains or *P. falciparum*, a larger sample size would be needed to determine if there is a correlation, as shown previously in both Burkina Faso⁷³ and Mali⁴⁰. The infection prevalence of resident *Wolbachia* strains in *An. coluzzii* from Ghana (4%) and *An. gambiae* s.s. from the DRC was variable but low (8–24%), consistent

with infection prevalence in Burkina Faso (11%)³⁹ but much lower than those reported in Mali (60–80%)⁴⁰ where infection was associated with reduced prevalence and intensity of sporozoite infection in field-collected females.

The discovery of a resident *Wolbachia* strain in *An. moucheti*, a highly anthropophilic and efficient malaria vector found in the forested areas of Western and Central Africa⁴¹, suggests further studies are warranted that utilize large sample sizes to examine the influence of the *wAnM* *Wolbachia* strain on *Plasmodium* infection dynamics in this malaria vector. *An. moucheti* is often the most abundant vectors, breeding in slow moving streams and rivers, contributing to year round malaria transmission in these regions^{74,75}. This species has also been implicated as a main bridge vector species in the transmission of ape *Plasmodium* malaria in Gabon⁷⁶. There is thought to be high genetic diversity in *An. moucheti* populations^{77,78}, which may either influence the prevalence of *Wolbachia* resident strains or *Wolbachia* could be contributing to genetic diversity through its effect on host reproduction. A novel *Wolbachia* strain in *An.* species 'A', present at high infection frequencies in Lwiro (close to Katana in DRC), also suggests more *Anopheles* species, including unidentified and potentially new species, could be infected with this widespread endosymbiotic bacterium. *An.* species A should be further investigated to determine if this species is a potential malaria vector, given our study demonstrated

P. falciparum infection in one of two individuals screened and ELISA-positive samples of this species were reported from the Western Highlands of Kenya⁴².

The variability of *Wolbachia* prevalence rates in *An. gambiae* s.l. complex from locations within DRC and Ghana and previous studies in Burkina Faso³⁹ and Mali⁴⁰ suggest the environment is one factor that influences the presence or absence of resident strains. In our study we found no evidence of *Wolbachia-Asaia* co-infections across all countries, supporting laboratory studies that have shown these two bacterial endosymbionts demonstrate competitive exclusion in *Anopheles* species^{36,38}. We also found that *Asaia* infection densities (whole body mosquitoes) were variable and location dependent which would correlate with this bacterium being environmentally acquired at all life stages, but also having the potential for both vertical and horizontal transmission³⁷. Significant variations in overall *Asaia* prevalence and density across different *Anopheles* species and locations in our study would also correlate with our data indicating no evidence of an association with *P. falciparum* prevalence in both Guinea and Uganda populations. Further studies are needed to determine the complex interaction between these two bacterial endosymbionts and malaria in diverse *Anopheles* malaria vector species. Horizontal transfer of *Wolbachia* strains between species (even over large phylogenetic differences) has shaped the evolutionary history of this endosymbiont in insects, and there is evidence for loss of infection in host lineages over evolutionary time⁷⁹. Our results showing a new strain present in *An. coluzzii* from Ghana (phylogenetically different to strains present in *An. gambiae* s.l. mosquitoes from both Burkina Faso and Mali), strain variants observed in *An. species A*, and the concatenated grouping of the novel *Anopheles* strains with strains found in different Orders of insects, support the lack of congruence between insect host and *Wolbachia* phylogenetic trees⁸⁰.

Our qPCR and 16S microbiome analysis indicates the densities of *wAnM* and *wAnsA* strains are significantly higher than resident *Wolbachia* strains in *An. gambiae* s.l. However, caution must be taken as we were only able to analyse selected individuals, and larger collections of wild populations would be required to confirm these results. Native *Wolbachia* strains dominating the microbiome of *An. species A* and *An. moucheti* is consistent with other studies of resident strains in mosquitoes showing *Wolbachia* 16S rRNA gene amplicons vastly outnumber sequences from other bacteria in *Ae. albopictus* and *Cx. quinquefasciatus*^{81,82}. The discovery of novel *Wolbachia* strains provides the rationale to undertake vector competence experiments to determine what effect these strains are having on malaria transmission. The tissue tropism of novel *Wolbachia* strains in malaria vectors will be particularly important to characterise given this will determine if these endosymbiotic bacteria are proximal to malaria parasites within the mosquito. It would also be important to determine the additional phenotypic effects novel resident *Wolbachia* strains have on their mosquito hosts. Some *Wolbachia* strains induce a reproductive phenotype termed cytoplasmic incompatibility (CI) that results in inviable offspring when an uninfected female mates with a *Wolbachia*-infected male. In contrast, *Wolbachia*-infected

females produce viable progeny when they mate with both infected and uninfected male mosquitoes. This reproductive advantage over uninfected females allows *Wolbachia* to spread within mosquito populations.

Conclusions

Wolbachia has been the focus of recent biocontrol strategies in which *Wolbachia* strains transferred into naïve mosquito species provide strong inhibitory effects on arboviruses^{16,18–20,83,84} and malaria parasites^{31,35}. The discovery of two novel *Wolbachia* strains in *Anopheles* mosquitoes, potentially present at much higher density than resident strains in the *An. gambiae* s.l. complex, also suggests the potential for these strains to be transinfected into other *Anopheles* species to produce inhibitory effects on *Plasmodium* parasites. *Wolbachia* transinfection success is partly attributed to the relatedness of donor and recipient host so the transfer of high density *Wolbachia* strains between *Anopheles* species may result in stable infections (or co-infections) that have strong inhibitory effects on *Plasmodium* development. Finally, if the resident strain present in *An. moucheti* is at low infection frequencies in wild populations, an alternative strategy known as the incompatible insect technique (IIT) could be implemented where *Wolbachia*-infected males are released to suppress the wild populations through CI (reviewed by 22). In summary, the important discovery of diverse novel *Wolbachia* strains in *Anopheles* species will help our understanding of how *Wolbachia* strains can potentially impact malaria transmission, through natural associations or being used as candidate strains for transinfection to create stable infections in other species.

Data availability

ITS2 GenBank accession numbers are listed in [Supplementary Table 1](#); *Wolbachia* 16S and *wsp* gene GenBank accession numbers are listed in [Supplementary Table 2](#); *Wolbachia* MLST gene GenBank accession numbers are listed in [Supplementary Table 3](#).

Raw PCR screening data is available at Open Science Framework: DOI: <https://doi.org/10.17605/OSF.IO/MW6XZ>⁶⁴.

Data are available under the terms of the [Creative Commons Zero “No rights reserved” data waiver](#) (CC0 1.0 Public domain dedication).

Grant information

CLJ and TW were supported by a Wellcome Trust /Royal Society grant awarded to TW (101285): <http://www.wellcome.ac.uk>; <https://royalsociety.org>. GLH is supported by NIH grants (R21AI124452 and R21AI129507), a University of Texas Rising Star award, the John S. Dunn Foundation Collaborative Research Award, the Robert J. Kleberg, Jr. and Helen C. Kleberg Foundation, and the Centers for Disease Control and Prevention (CDC) (Cooperative Agreement Number U01CK000512). The papers contents are solely the responsibility of the authors and do not necessarily represent the official views of the CDC or the Department of Health and Human Services. This work

was also supported by a James W. McLaughlin postdoctoral fellowship at the University of Texas Medical Branch to SH. Field work in Uganda was funded by UK aid (through the Programme Partnership Arrangement grant to Malaria Consortium). YAA and ARM were supported by a NIH grant R01AI123074. SRI was funded by the U.S. President's Malaria Initiative.

The funders had no role in study design, data collection and analysis, decision to publish, or preparation of the manuscript.

Acknowledgements

We would like to thank all the mosquito collectors and residents of the villages where collections took place. We would also like to thank John Gimnig, Bill Hawley and Barb Marston for reviewing our manuscript. This publication made use of the PubMLST website (<https://pubmlst.org/wolbachia/>) sited at the University of Oxford (Jolley & Maiden 2010, BMC Bioinformatics, 11:595). The development and maintenance of this site has been funded by the Wellcome Trust.

Supplementary material

Supplementary Table 1. Additional sample details and *ITS2* GenBank accession numbers.

[Click here to access the data.](#)

Supplementary Table 2. *Wolbachia* 16S and *wsp* GenBank accession numbers.

[Click here to access the data.](#)

Supplementary Table 3. *Wolbachia* MLST gene GenBank accession numbers.

[Click here to access the data.](#)

Supplementary Figure 1. Alpha and beta diversity of *An. gambiae* s.s. from Kissidougou, Guinea and Butemba, Uganda.

[Click here to access the data.](#)

Supplementary Figure 2. Prevalence of the bacterial endosymbiont *Asaia* and malaria parasites in *An. gambiae* s.s. mosquitoes from Guinea.

[Click here to access the data.](#)

References

- Hay SI, Sinka ME, Okara RM, *et al.*: **Developing global maps of the dominant *anopheles* vectors of human malaria.** *PLoS Med.* 2010; 7(2): e1000209.
[PubMed Abstract](#) | [Publisher Full Text](#) | [Free Full Text](#)
- Cirimotich CM, Dong Y, Clayton AM, *et al.*: **Natural microbe-mediated refractoriness to *Plasmodium* infection in *Anopheles gambiae*.** *Science.* 2011; 332(6031): 855–8.
[PubMed Abstract](#) | [Publisher Full Text](#) | [Free Full Text](#)
- Cirimotich CM, Ramirez JL, Dimopoulos G: **Native microbiota shape insect vector competence for human pathogens.** *Cell Host Microbe.* 2011; 10(4): 307–10.
[PubMed Abstract](#) | [Publisher Full Text](#) | [Free Full Text](#)
- Dennison NJ, Jupatanakul N, Dimopoulos G: **The mosquito microbiota influences vector competence for human pathogens.** *Curr Opin Insect Sci.* 2014; 3: 6–13.
[PubMed Abstract](#) | [Publisher Full Text](#) | [Free Full Text](#)
- Boissière A, Tchioffo MT, Bachar D, *et al.*: **Midgut microbiota of the malaria mosquito vector *Anopheles gambiae* and interactions with *Plasmodium falciparum* infection.** *PLoS Pathog.* 2012; 8(5): e1002742.
[PubMed Abstract](#) | [Publisher Full Text](#) | [Free Full Text](#)
- Dennison NJ, Saraiva RG, Cirimotich CM, *et al.*: **Functional genomic analyses of *Enterobacter*, *Anopheles* and *Plasmodium* reciprocal interactions that impact vector competence.** *Malar J.* 2016; 15(1): 425.
[PubMed Abstract](#) | [Publisher Full Text](#) | [Free Full Text](#)
- Zug R, Hammerstein P: **Still a host of hosts for *Wolbachia*: analysis of recent data suggests that 40% of terrestrial arthropod species are infected.** *PLoS One.* 2012; 7(6): e38544.
[PubMed Abstract](#) | [Publisher Full Text](#) | [Free Full Text](#)
- Klasson L, Walker T, Sebahia M, *et al.*: **Genome evolution of *Wolbachia* strain wPip from the *Culex pipiens* group.** *Mol Biol Evol.* 2008; 25(9): 1877–87.
[PubMed Abstract](#) | [Publisher Full Text](#) | [Free Full Text](#)
- Laven H: **Speciation by cytoplasmic isolation in the *Culex pipiens*-complex.** *Cold Spring Harb Symp Quant Biol.* 1959; 24: 166–73.
[PubMed Abstract](#) | [Publisher Full Text](#)
- Sinkins SP, Walker T, Lynd AR, *et al.*: ***Wolbachia* variability and host effects on crossing type in *Culex* mosquitoes.** *Nature.* 2005; 436(7048): 257–60.
[PubMed Abstract](#) | [Publisher Full Text](#)
- Dutton TJ, Sinkins SP: **Strain-specific quantification of *Wolbachia* density in *Aedes albopictus* and effects of larval rearing conditions.** *Insect Mol Biol.* 2004; 13(3): 317–22.
[PubMed Abstract](#) | [Publisher Full Text](#)
- Sinkins SP, Braig HR, O'Neill SL: ***Wolbachia pipiensis*: bacterial density and unidirectional cytoplasmic incompatibility between infected populations of *Aedes albopictus*.** *Exp Parasitol.* 1995; 81(3): 284–91.
[PubMed Abstract](#) | [Publisher Full Text](#)
- Glaser RL, Meola MA: **The native *Wolbachia* endosymbionts of *Drosophila melanogaster* and *Culex quinquefasciatus* increase host resistance to West Nile virus infection.** *PLoS One.* 2010; 5(8): e11977.
[PubMed Abstract](#) | [Publisher Full Text](#) | [Free Full Text](#)
- Mousson L, Zouache K, Arias-Goeta C, *et al.*: **The native *Wolbachia* symbionts limit transmission of dengue virus in *Aedes albopictus*.** *PLoS Negl Trop Dis.* 2012; 6(12): e1989.
[PubMed Abstract](#) | [Publisher Full Text](#) | [Free Full Text](#)
- Silva JBL, Magalhães Alves D, Bottino-Rojas V, *et al.*: ***Wolbachia* and dengue virus infection in the mosquito *Aedes fluviatilis* (Diptera: Culicidae).** *PLoS One.*

- 2017; 12(7): e0181678.
[PubMed Abstract](#) | [Publisher Full Text](#) | [Free Full Text](#)
16. Walker T, Johnson PH, Moreira LA, *et al.*: **The wMel *Wolbachia* strain blocks dengue and invades caged *Aedes aegypti* populations.** *Nature*. 2011; 476(7361): 450–3.
[PubMed Abstract](#) | [Publisher Full Text](#)
17. Iturbe-Ormaetxe I, Walker T, O' Neill SL: ***Wolbachia* and the biological control of mosquito-borne disease.** *EMBO Rep*. 2011; 12(6): 508–18.
[PubMed Abstract](#) | [Publisher Full Text](#) | [Free Full Text](#)
18. Joubert DA, Walker T, Carrington LB, *et al.*: **Establishment of a *Wolbachia* Superinfection in *Aedes aegypti* Mosquitoes as a Potential Approach for Future Resistance Management.** *PLoS Pathog*. 2016; 12(2): e1005434.
[PubMed Abstract](#) | [Publisher Full Text](#) | [Free Full Text](#)
19. Moreira LA, Iturbe-Ormaetxe I, Jeffery JA, *et al.*: **A *Wolbachia* symbiont in *Aedes aegypti* limits infection with dengue, Chikungunya, and *Plasmodium*.** *Cell*. 2009; 139(7): 1268–78.
[PubMed Abstract](#) | [Publisher Full Text](#)
20. Bian G, Xu Y, Lu P, *et al.*: **The endosymbiotic bacterium *Wolbachia* induces resistance to dengue virus in *Aedes aegypti*.** *PLoS Pathog*. 2010; 6(4): e1000833.
[PubMed Abstract](#) | [Publisher Full Text](#) | [Free Full Text](#)
21. Blagrove MS, Arias-Goeta C, Failloux AB, *et al.*: ***Wolbachia* strain wMel induces cytoplasmic incompatibility and blocks dengue transmission in *Aedes albopictus*.** *Proc Natl Acad Sci U S A*. 2012; 109(1): 255–60.
[PubMed Abstract](#) | [Publisher Full Text](#) | [Free Full Text](#)
22. Bourtzis K, Dobson SL, Xi Z, *et al.*: **Harnessing mosquito-*Wolbachia* symbiosis for vector and disease control.** *Acta Trop*. 2014; 132 Suppl: S150–63.
[PubMed Abstract](#) | [Publisher Full Text](#)
23. Hoffmann AA, Montgomery BL, Popovici J, *et al.*: **Successful establishment of *Wolbachia* in *Aedes* populations to suppress dengue transmission.** *Nature*. 2011; 476(7361): 454–7.
[PubMed Abstract](#) | [Publisher Full Text](#)
24. Frentiu FD, Zakir T, Walker T, *et al.*: **Limited dengue virus replication in field-collected *Aedes aegypti* mosquitoes infected with *Wolbachia*.** *PLoS Negl Trop Dis*. 2014; 8(2): e2688.
[PubMed Abstract](#) | [Publisher Full Text](#) | [Free Full Text](#)
25. Kittayapong P, Baisley KJ, Baimai V, *et al.*: **Distribution and diversity of *Wolbachia* infections in Southeast Asian mosquitoes (Diptera: Culicidae).** *J Med Entomol*. 2000; 37(3): 340–5.
[PubMed Abstract](#) | [Publisher Full Text](#)
26. Tiawsirisup S, Sripratanorn S, Oraveerakul K, *et al.*: **Distribution of mosquito (Diptera: Culicidae) species and *Wolbachia* (Rickettsiales: Rickettsiaceae) infections during the bird immigration season in Pathumthani province, central Thailand.** *Parasitol Res*. 2008; 102(4): 731–5.
[PubMed Abstract](#) | [Publisher Full Text](#)
27. Wiwatanaratanaabur I: **Geographic distribution of wolbachial infections in mosquitoes from Thailand.** *J Invertebr Pathol*. 2013; 114(3): 337–40.
[PubMed Abstract](#) | [Publisher Full Text](#)
28. Ricci I, Cancrini G, Gabrielli S, *et al.*: **Searching for *Wolbachia* (Rickettsiales: Rickettsiaceae) in mosquitoes (Diptera: Culicidae): large polymerase chain reaction survey and new identifications.** *J Med Entomol*. 2002; 39(4): 562–7.
[PubMed Abstract](#) | [Publisher Full Text](#)
29. Rasgon JL, Scott TW: **An initial survey for *Wolbachia* (Rickettsiales: Rickettsiaceae) infections in selected California mosquitoes (Diptera: Culicidae).** *J Med Entomol*. 2004; 41(2): 255–7.
[PubMed Abstract](#) | [Publisher Full Text](#)
30. Walker T, Moreira LA: **Can *Wolbachia* be used to control malaria?** *Mem Inst Oswaldo Cruz*. 2011; 106 Suppl 1: 212–7.
[PubMed Abstract](#) | [Publisher Full Text](#)
31. Hughes GL, Koga R, Xue P, *et al.*: ***Wolbachia* infections are virulent and inhibit the human malaria parasite *Plasmodium falciparum* in *Anopheles gambiae*.** *PLoS Pathog*. 2011; 7(5): e1002043.
[PubMed Abstract](#) | [Publisher Full Text](#) | [Free Full Text](#)
32. Hughes GL, Vega-Rodríguez J, Xue P, *et al.*: ***Wolbachia* strain wAlbB enhances infection by the rodent malaria parasite *Plasmodium berghei* in *Anopheles gambiae* mosquitoes.** *Appl Environ Microbiol*. 2012; 78(5): 1491–5.
[PubMed Abstract](#) | [Publisher Full Text](#) | [Free Full Text](#)
33. Murdock CC, Blanford S, Hughes GL, *et al.*: **Temperature alters *Plasmodium* blocking by *Wolbachia*.** *Sci Rep*. 2014; 4: 3932.
[PubMed Abstract](#) | [Publisher Full Text](#) | [Free Full Text](#)
34. Hughes GL, Rivero A, Rasgon JL: ***Wolbachia* can enhance *Plasmodium* infection in mosquitoes: implications for malaria control?** *PLoS Pathog*. 2014; 10(9): e1004182.
[PubMed Abstract](#) | [Publisher Full Text](#) | [Free Full Text](#)
35. Bian G, Joshi D, Dong Y, *et al.*: ***Wolbachia* invades *Anopheles stephensi* populations and induces refractoriness to *Plasmodium* infection.** *Science*. 2013; 340(6133): 748–51.
[PubMed Abstract](#) | [Publisher Full Text](#)
36. Hughes GL, Dodson BL, Johnson RM, *et al.*: **Native microbiome impedes vertical transmission of *Wolbachia* in *Anopheles* mosquitoes.** *Proc Natl Acad Sci U S A*. 2014; 111(34): 12498–503.
[PubMed Abstract](#) | [Publisher Full Text](#) | [Free Full Text](#)
37. Favia G, Ricci I, Damiani C, *et al.*: **Bacteria of the genus *Asaia* stably associate with *Anopheles stephensi*, an Asian malarial mosquito vector.** *Proc Natl Acad Sci U S A*. 2007; 104(21): 9047–51.
[PubMed Abstract](#) | [Publisher Full Text](#) | [Free Full Text](#)
38. Rossi P, Ricci I, Cappelli A, *et al.*: **Mutual exclusion of *Asaia* and *Wolbachia* in the reproductive organs of mosquito vectors.** *Parasit Vectors*. 2015; 8: 278.
[PubMed Abstract](#) | [Publisher Full Text](#) | [Free Full Text](#)
39. Baldini F, Segata N, Pompon J, *et al.*: **Evidence of natural *Wolbachia* infections in field populations of *Anopheles gambiae*.** *Nat Commun*. 2014; 5: 3985.
[PubMed Abstract](#) | [Publisher Full Text](#) | [Free Full Text](#)
40. Gomes FM, Hixson BL, Tyner MDW, *et al.*: **Effect of naturally occurring *Wolbachia* in *Anopheles gambiae* s.l. mosquitoes from Mali on *Plasmodium falciparum* malaria transmission.** *Proc Natl Acad Sci U S A*. 2017; 114(47): 12566–12571.
[PubMed Abstract](#) | [Publisher Full Text](#) | [Free Full Text](#)
41. Sinka ME, Bangs MJ, Manguin S, *et al.*: **The dominant *Anopheles* vectors of human malaria in Africa, Europe and the Middle East: occurrence data, distribution maps and bionomic précis.** *Parasit Vectors*. 2010; 3: 117.
[PubMed Abstract](#) | [Publisher Full Text](#) | [Free Full Text](#)
42. Stevenson J, St Laurent B, Lobo NF, *et al.*: **Novel vectors of malaria parasites in the western highlands of Kenya.** *Emerg Infect Dis*. 2012; 18(9): 1547–9.
[PubMed Abstract](#) | [Publisher Full Text](#) | [Free Full Text](#)
43. Lobo NF, St Laurent B, Sikaala CH, *et al.*: **Unexpected diversity of *Anopheles* species in Eastern Zambia: implications for evaluating vector behavior and interventions using molecular tools.** *Sci Rep*. 2015; 5: 17952.
[PubMed Abstract](#) | [Publisher Full Text](#) | [Free Full Text](#)
44. Tantely ML, Rakotonjaina JC, Tata E, *et al.*: **Biology of mosquitoes that are potential vectors of Rift Valley Fever virus in different biotopes of the central highlands of Madagascar.** *J Med Entomol*. 2013; 50(3): 603–10.
[PubMed Abstract](#) | [Publisher Full Text](#)
45. Scott JA, Brogdon WG, Collins FH: **Identification of single specimens of the *Anopheles gambiae* complex by the polymerase chain reaction.** *Am J Trop Med Hyg*. 1993; 49(4): 520–9.
[PubMed Abstract](#) | [Publisher Full Text](#)
46. Santolamazza F, Mancini E, Simard F, *et al.*: **Insertion polymorphisms of *SINE200* retrotransposons within speciation islands of *Anopheles gambiae* molecular forms.** *Malar J*. 2008; 7: 163.
[PubMed Abstract](#) | [Publisher Full Text](#) | [Free Full Text](#)
47. Bass C, Williamson MS, Field LM: **Development of a multiplex real-time PCR assay for identification of members of the *Anopheles gambiae* species complex.** *Acta Trop*. 2008; 107(1): 50–3.
[PubMed Abstract](#) | [Publisher Full Text](#)
48. Cohuet A, Simard F, Toto JC, *et al.*: **Species identification within the *Anopheles funestus* group of malaria vectors in Cameroon and evidence for a new species.** *Am J Trop Med Hyg*. 2003; 69(2): 200–5.
[PubMed Abstract](#) | [Publisher Full Text](#)
49. Beebe NW, Saul A: **Discrimination of all members of the *Anopheles punctulatus* complex by polymerase chain reaction–restriction fragment length polymorphism analysis.** *Am J Trop Med Hyg*. 1995; 53(5): 478–81.
[PubMed Abstract](#) | [Publisher Full Text](#)
50. Marie A, Boissière A, Tsapi MT, *et al.*: **Evaluation of a real-time quantitative PCR to measure the wild *Plasmodium falciparum* infectivity rate in salivary glands of *Anopheles gambiae*.** *Malar J*. 2013; 12: 224.
[PubMed Abstract](#) | [Publisher Full Text](#) | [Free Full Text](#)
51. Yamada Y, Katsura K, Kawasaki H, *et al.*: ***Asaia bogorensis* gen. nov., sp. nov., an unusual acetic acid bacterium in the alpha-Proteobacteria.** *Int J Syst Evol Microbiol*. 2000; 50 Pt 2: 823–9.
[PubMed Abstract](#) | [Publisher Full Text](#)
52. Holt RA, Subramanian GM, Halpern A, *et al.*: **The genome sequence of the malaria mosquito *Anopheles gambiae*.** *Science*. 2002; 298(5591): 129–49.
[PubMed Abstract](#) | [Publisher Full Text](#)
53. Coggins SA, Estévez-Lao TY, Hillyer JF: **Increased survivorship following bacterial infection by the mosquito *Aedes aegypti* as compared to *Anopheles gambiae* correlates with increased transcriptional induction of antimicrobial peptides.** *Dev Comp Immunol*. 2012; 37(3–4): 390–401.
[PubMed Abstract](#) | [Publisher Full Text](#)
54. Werren JH, Windsor DM: ***Wolbachia* infection frequencies in insects: evidence of a global equilibrium?** *Proc Biol Sci*. 2000; 267(1450): 1277–85.
[PubMed Abstract](#) | [Publisher Full Text](#) | [Free Full Text](#)
55. Zhou W, Roussel F, O'Neil S: **Phylogeny and PCR-based classification of *Wolbachia* strains using *wsp* gene sequences.** *Proc Biol Sci*. 1998; 265(1395): 509–15.
[PubMed Abstract](#) | [Publisher Full Text](#) | [Free Full Text](#)
56. de Oliveira CD, Gonçalves DS, Baton LA, *et al.*: **Broader prevalence of *Wolbachia* in insects including potential human disease vectors.** *Bull Entomol Res*. 2015; 105(3): 305–15.
[PubMed Abstract](#) | [Publisher Full Text](#)
57. Baldo L, Bordenstein S, Wernegreen JJ, *et al.*: **Widespread recombination throughout *Wolbachia* genomes.** *Mol Biol Evol*. 2006; 23(2): 437–49.
[PubMed Abstract](#) | [Publisher Full Text](#)
58. Kumar S, Stecher G, Tamura K: **MEGA7: Molecular Evolutionary Genetics Analysis Version 7.0 for Bigger Datasets.** *Mol Biol Evol*. 2016; 33(7): 1870–4.
[PubMed Abstract](#) | [Publisher Full Text](#)
59. Jolley KA, Chan MS, Maiden MC: **mlstDbNet - distributed multi-locus sequence typing (MLST) databases.** *BMC Bioinformatics*. 2004; 5: 86.
[PubMed Abstract](#) | [Publisher Full Text](#) | [Free Full Text](#)

60. Tamura K, Nei M: **Estimation of the number of nucleotide substitutions in the control region of mitochondrial DNA in humans and chimpanzees.** *Mol Biol Evol.* 1993; **10**(3): 512–26.
[PubMed Abstract](#) | [Publisher Full Text](#)
61. Klindworth A, Pruesse E, Schweer T, *et al.*: **Evaluation of general 16S ribosomal RNA gene PCR primers for classical and next-generation sequencing-based diversity studies.** *Nucleic Acids Res.* 2013; **41**(1): e1.
[PubMed Abstract](#) | [Publisher Full Text](#) | [Free Full Text](#)
62. Quast C, Pruesse E, Yilmaz P, *et al.*: **The SILVA ribosomal RNA gene database project: improved data processing and web-based tools.** *Nucleic Acids Res.* 2013; **41**(Database issue): D590–6.
[PubMed Abstract](#) | [Publisher Full Text](#) | [Free Full Text](#)
63. St Laurent B, Cooke M, Krishnankutty SM, *et al.*: **Molecular Characterization Reveals Diverse and Unknown Malaria Vectors in the Western Kenyan Highlands.** *Am J Trop Med Hyg.* 2016; **94**(2): 327–35.
[PubMed Abstract](#) | [Publisher Full Text](#) | [Free Full Text](#)
64. Walker T: **Novel Wolbachia Strains in Anopheles Malaria Vectors from Sub-Saharan Africa.** *Open Science Framework.* 2018. Web. <http://www.doi.org/10.17605/OSF.IO/MW6XZ>
65. Kyallo D, Amratia P, Mundia CW, *et al.*: **A geo-coded inventory of anophelines in the Afrotropical Region south of the Sahara: 1898-2016 [version 1; referees: 3 approved].** *Wellcome Open Res.* 2017; **2**: 57.
[PubMed Abstract](#) | [Publisher Full Text](#) | [Free Full Text](#)
66. Wiebe A, Longbottom J, Gleave K, *et al.*: **Geographical distributions of African malaria vector sibling species and evidence for insecticide resistance.** *Malar J.* 2017; **16**(1): 85.
[PubMed Abstract](#) | [Publisher Full Text](#) | [Free Full Text](#)
67. Tiffany A, Moundekeno FP, Traoré A, *et al.*: **Encouraging impact following 2.5 years of reinforced malaria control interventions in a hyperendemic region of the Republic of Guinea.** *Malar J.* 2016; **15**(1): 298.
[PubMed Abstract](#) | [Publisher Full Text](#) | [Free Full Text](#)
68. Riveron JM, Watsenga F, Irving H, *et al.*: **High Plasmodium Infection Rate and Reduced Bed Net Efficacy in Multiple Insecticide-Resistant Malaria Vectors in Kinshasa, Democratic Republic of Congo.** *J Infect Dis.* 2018; **217**(2): 320–328.
[PubMed Abstract](#) | [Publisher Full Text](#) | [Free Full Text](#)
69. Erlank E, Koekemoer LL, Coetzee M: **The importance of morphological identification of African anopheline mosquitoes (Diptera: Culicidae) for malaria control programmes.** *Malar J.* 2018; **17**(1): 43.
[PubMed Abstract](#) | [Publisher Full Text](#) | [Free Full Text](#)
70. Tabue RN, Awono-Ambene P, Etang J, *et al.*: **Role of Anopheles (Cellia) rufipes (Gough, 1910) and other local anophelines in human malaria transmission in the northern savannah of Cameroon: a cross-sectional survey.** *Parasit Vectors.* 2017; **10**(1): 22.
[PubMed Abstract](#) | [Publisher Full Text](#) | [Free Full Text](#)
71. Buck M, Nilsson LK, Brunius C, *et al.*: **Bacterial associations reveal spatial population dynamics in Anopheles gambiae mosquitoes.** *Sci Rep.* 2016; **6**: 22806.
[PubMed Abstract](#) | [Publisher Full Text](#) | [Free Full Text](#)
72. Muturi EJ, Ramirez JL, Rooney AP, *et al.*: **Comparative analysis of gut microbiota of mosquito communities in central Illinois.** *PLoS Negl Trop Dis.* 2017; **11**(2): e0005377.
[PubMed Abstract](#) | [Publisher Full Text](#) | [Free Full Text](#)
73. Shaw WR, Marcenac P, Childs LM, *et al.*: **Wolbachia infections in natural Anopheles populations affect egg laying and negatively correlate with Plasmodium development.** *Nat Commun.* 2016; **7**: 11772.
[PubMed Abstract](#) | [Publisher Full Text](#) | [Free Full Text](#)
74. Antonio-Nkondjio C, Simard F, Awono-Ambene P, *et al.*: **Malaria vectors and urbanization in the equatorial forest region of south Cameroon.** *Trans R Soc Trop Med Hyg.* 2005; **99**(5): 347–54.
[PubMed Abstract](#) | [Publisher Full Text](#)
75. Cano J, Descalzo MA, Moreno M, *et al.*: **Spatial variability in the density, distribution and vectorial capacity of anopheline species in a high transmission village (Equatorial Guinea).** *Malar J.* 2006; **5**: 21.
[PubMed Abstract](#) | [Publisher Full Text](#) | [Free Full Text](#)
76. Makanga B, Yangari P, Rahola N, *et al.*: **Ape malaria transmission and potential for ape-to-human transfers in Africa.** *Proc Natl Acad Sci U S A.* 2016; **113**(19): 5329–34.
[PubMed Abstract](#) | [Publisher Full Text](#) | [Free Full Text](#)
77. Antonio-Nkondjio C, Ndo C, Kengne P, *et al.*: **Population structure of the malaria vector Anopheles moucheti in the equatorial forest region of Africa.** *Malar J.* 2008; **7**: 120.
[PubMed Abstract](#) | [Publisher Full Text](#) | [Free Full Text](#)
78. Fouet C, Kamdem C, Gamez S, *et al.*: **Extensive genetic diversity among populations of the malaria mosquito Anopheles moucheti revealed by population genomics.** *Infect Genet Evol.* 2017; **48**: 27–33.
[PubMed Abstract](#) | [Publisher Full Text](#)
79. Zug R, Koehncke A, Hammerstein P: **Epidemiology in evolutionary time: the case of Wolbachia horizontal transmission between arthropod host species.** *J Evol Biol.* 2012; **25**(11): 2149–60.
[PubMed Abstract](#) | [Publisher Full Text](#)
80. Bailly-Bechet M, Martins-Simões P, Szöllosi GJ, *et al.*: **How Long Does Wolbachia Remain on Board?** *Mol Biol Evol.* 2017; **34**(5): 1183–1193.
[PubMed Abstract](#) | [Publisher Full Text](#)
81. Minard G, Tran FH, Dubost A, *et al.*: **Pyrosequencing 16S rRNA genes of bacteria associated with wild tiger mosquito Aedes albopictus: a pilot study.** *Front Cell Infect Microbiol.* 2014; **4**: 59.
[PubMed Abstract](#) | [Publisher Full Text](#) | [Free Full Text](#)
82. Hegde S, Khanipov K, Albayrak L, *et al.*: **Microbiome Interaction Networks and Community Structure From Laboratory-Reared and Field-Collected Aedes aegypti, Aedes albopictus, and Culex quinquefasciatus Mosquito Vectors.** *Front Microbiol.* 2018; **9**: 2160.
[Publisher Full Text](#)
83. Dutra HL, Rocha MN, Dias FB, *et al.*: **Wolbachia Blocks Currently Circulating Zika Virus Isolates in Brazilian Aedes aegypti Mosquitoes.** *Cell Host Microbe.* 2016; **19**(6): 771–4.
[PubMed Abstract](#) | [Publisher Full Text](#) | [Free Full Text](#)
84. van den Hurk AF, Hall-Mendelin S, Pyke AT, *et al.*: **Impact of Wolbachia on infection with chikungunya and yellow fever viruses in the mosquito vector Aedes aegypti.** *PLoS Negl Trop Dis.* 2012; **6**(11): e1892.
[PubMed Abstract](#) | [Publisher Full Text](#) | [Free Full Text](#)

Open Peer Review

Current Referee Status:



Version 1

Referee Report 08 November 2018

<https://doi.org/10.21956/wellcomeopenres.16091.r33880>



Christophe Antonio-Nkondjio 

Malaria Research Laboratory, Organisation for Coordination in the Fight Against Endemic Diseases in Central Africa, Yaoundé, Cameroon

Good study by Jefferies *et al.* presenting the distribution of Wolbachia strains in anopheles species from different sub-Saharan Africa countries.

General comment

In the method section the authors say DNA was extracted from whole mosquitoes or abdomen for their analysis. What are the chances that wolbachia infections cases reported in the paper could be due to parasites contain in the blood meal rather than true infection of mosquitoes?

Methods

Study sites & collection methods

- “Democratic Republic of the Congo” change to “Democratic Republic of Congo”
- Collection sites it will be interesting to indicate from the coordinates if it is Latitude North/South or longitude East/West the paper is also for non specialists in the domain.

Figure 1:

- B, C, D in the legend it is mentioned “P. falciparum prevalence” is it for human or mosquitoes please provide precision. (% Positive ???, % Negative ??)
- P. falciparum should be in italics.
- Figure 1A: It should be interesting to indicate the names of study sites. The authors could labelled the sites by using number for sites for each country 1, 2,3 ... then providing in the legend what 1 is placed for.

Figure 6: legend not clear.

Figure 7 B: The legend is not clear (can't read anything).

Is the work clearly and accurately presented and does it cite the current literature?

Yes

Is the study design appropriate and is the work technically sound?

Yes

Are sufficient details of methods and analysis provided to allow replication by others?

Yes

If applicable, is the statistical analysis and its interpretation appropriate?

Yes

Are all the source data underlying the results available to ensure full reproducibility?

Yes

Are the conclusions drawn adequately supported by the results?

Yes

Competing Interests: No competing interests were disclosed.

I have read this submission. I believe that I have an appropriate level of expertise to confirm that it is of an acceptable scientific standard.

Referee Report 05 November 2018

<https://doi.org/10.21956/wellcomeopenres.16091.r34140>



Anne Duploux 

Lund University, Lund, Sweden

Jeffries and colleagues provide here a study of the prevalence and penetrance of *Wolbachia* infection in several species of *Anopheles* mosquitoes across several Sub-Saharan countries. To my knowledge this is the largest such study on the topics. This study adds important data on growing evidence that species of the genus *Anopheles* can host the infection, thus contrasting with previous reports suggesting that the bacterium was absent from these mosquitoes.

Furthermore, the authors investigate the tripartite occurrence between *Wolbachia*, the parasite *Plasmodium* and another symbiotic bacterium *Asaia*. The article supports previous studies suggesting niche competition between *Wolbachia* and *Asaia*, as none of the samples carry both bacteria. The study does not, however, provide field-based evidence that the presence of *Wolbachia* and/or *Asaia* in the mosquitoes would affect parasitism by *Plasmodium*.

This research is timely. With the development of new pest control strategies using *Wolbachia* as a natural biological agent against the transmission of several vector-borne diseases in the field, it is important to have a comprehensive understanding of the diversity of the natural infections already present in the field, but also of the different factors that could affect the efficiency of such control programs. Including the presence of competing natural infection by *Asaia* bacteria for example.

The study is well written and clear, with the sufficient information included to support future potential replication. I think this is a fine contribution to the current literature, I have only minor comments to the authors.

It might be worth modifying the text in the abstract, and the introduction, to specify that the previous reports of *Wolbachia* in *Anopheles* were only from 2 West-African countries, while the current study is providing data from 5 countries across the Sub-Saharan region.

Method:

Please provide information on how the maps of figure 1 were generated. Did you need any approval/licenses for using these maps?

Please provide information on collection permits, if any was needed from the different African countries.

What is CDC standing for in the method section? 'CDC-light trap'

In the *Wolbachia* detection method section:

Edit typo: 'was used AS a positive control'

Table 1: What is the rationale for the authors to provide the information by countries rather than by species? Isn't the most interesting point of the paper about the infection being reported in additional species of *Anopheles*?

Figure 2: Explain the significance of the difference square/circle/triangle shapes and filled vs empty shapes? Also state in legend that the codes given are the Genbank Accession numbers.

Figure 2: Where did you get the sequences from the *An. bwambae* and *An. quadriannulatus*? I think this info is missing from the method section.

P. falciparum, *Wolbachia* and *Asaia* prevalence section, paragraph 2:

Does your analysis include the *P. falciparum* and *Wolbachia* infected specimens? Would it make any difference to remove the *Wolbachia*-infected specimens from the analysis?

Discussion section, end of 4th paragraph:

'New' strain in *An. Coluzzii* from Ghana. 'New' sounds like the infection is more recent than any other infection found in this mosquito species, which the results are not supporting. Would 'unique' or 'different' be good enough?

Figure 7: Where is *Asaia* from Figure 7b? from the current picture it looks like *Asaia* is absent from those samples. Although the text states that the infection is not a dominant species of those samples. If *Asaia* is included in the 'Others' maybe it is worth specifying it in the legend, otherwise it could be added as a particular section of the graph like in Figure 7a to ease comparison of the two panels.

Figure S1: Why are some of the circles slightly larger than others? Is it that different samples are overlapping?

Is the work clearly and accurately presented and does it cite the current literature?

Yes

Is the study design appropriate and is the work technically sound?

Yes

Are sufficient details of methods and analysis provided to allow replication by others?

Yes

If applicable, is the statistical analysis and its interpretation appropriate?

Yes

Are all the source data underlying the results available to ensure full reproducibility?

Partly

Are the conclusions drawn adequately supported by the results?

Yes

Competing Interests: No competing interests were disclosed.**I have read this submission. I believe that I have an appropriate level of expertise to confirm that it is of an acceptable scientific standard.**

Referee Report 21 September 2018

<https://doi.org/10.21956/wellcomeopenres.16091.r33884>**Mathilde Gendrin**  ^{1,2}, **Ottavia Romoli** ³¹ Microbiota of Insect Vectors Group, Institut Pasteur de la Guyane, Cayenne, French Guiana² Parasites and Vectors Department, Institut Pasteur, Paris, France³ Microbiota of Insect Vectors Group, Institut Pasteur de la Guyane, Cayenne, French Guiana

Jeffries and co-authors performed a large scale analysis of the presence of Wolbachia in Anopheles mosquitoes from five countries in Africa. They found that in two of these countries, some mosquitoes were infected with Wolbachia, confirming and widening the recent discovery of the presence of Wolbachia in Anopheles mosquitoes. This is the strongest point of the paper, as an independent confirmation is always welcome and as some populations of Anopheles are even found here to have a high prevalence of Wolbachia.

The authors also checked for the presence of Asaia sp. in the analysed mosquitoes, as this bacterium is thought to compete with Wolbachia in Anopheles. They did not find any mosquito co-infected by Asaia and Wolbachia. This is also an important finding as it corroborates studies performed in the laboratory, but this time with field-collected mosquitoes. They found that in mosquitoes coming from one population, Asaia was actually a dominant species, >99% of the microbiota. Figure 7a is not very clear as one expects the scale to go from 0 to 100%, therefore we suggest to use a discontinued axis to present these interesting results.

Finally the authors investigated the presence of Plasmodium in the studied mosquitoes, as Wolbachia is thought to interfere with some transmitted pathogens. This part is less convincing as the tests have been performed on DNA extraction from whole bodies or abdomens, while the presence of Plasmodium in head and thorax (or more specifically, in salivary glands) is a more suitable method to assess transmission potential. Moreover, the conclusions drawn on the interactions between Plasmodium and Wolbachia are not exactly clear. Considering that $10.16 + 1.56 = 11.72\%$ mosquitoes are infected with Wolbachia and $11.72 + 1.56 = 13.28\%$ are infected with Plasmodium, if there is no effect between Wolbachia and Plasmodium, you expect that $11.72\% \times 13.28\% = 1.56\%$ is infected by both. Surprisingly, this is exactly the result here. Biology is rarely so close to math, for so small numbers... The authors should thus state more clearly that their results favor no interactions, as confirmed by the p value which is very close to 1. On the contrary, the discussion currently suggests that the non significant correlation is due to small numbers. However, one cannot jump to conclusion on the inability of Wolbachia to interfere with Plasmodium, as these results have been performed on abdomens and whole bodies, therefore we do

not know whether the co-infected mosquitoes had just blood fed (and/or carried early stages of Plasmodium).

To improve the clarity of the article, it would be interesting to have an additional figure or table summarizing the experimental set up, explaining which mosquitoes are included in which analysis and which Wolbachia strain is found in which mosquitoes.

We also have minor comments on the manuscript:

The expression « resident strain » is not clear to us.

16S « rRNA » and « rDNA »: a consistent word may be used, rRNA seems more consensual.

The total number of mosquitoes, of Wolbachia infected mosquitoes, of Asaia infected ones, etc would be interesting.

Page 3:

§2: Asaia is not an endosymbiont

§3: « have » needs probably to be removed in « than would have be identified using morphological identification alone »

§4 needs a first sentence identifying the gap of knowledge that the authors want to fill

§5: Can the authors clearly state whether some mosquitoes had blood in their midgut?

Page 4:

Figure 1: scale should be in km, miles is not an SI unit

§2: « DNA extraction and MOSQUITO species identification ». More generally, it is not always clear whether the authors speak about mosquitoes or Wolbachia strains.

§3: « as preliminary trials revealed this was the optimal method for both sensitivity and specificity »: please add « data not shown » or remove it

Page 5:

Instead of μL of DNA, the actual quantity in ng would be preferable.

All PCRs: primer sequences are needed

§3: « Both chromatograms (forward and reverse traces) from each sample WERE manually »

Pages 6-7

Table 1: probably some mistakes, e.g. *An. gambiae* in Mikalayi: 11.8% corresponds neither to 1/16 nor to 2/16, so all the numbers should be checked. It would be appropriate to enter the actual numbers in brackets, and to indicate the co-prevalence of Wolbachia and Plasmodium. The legend should be grouped below or above the table and the explanation about mosquitoes in bold is unclear.

In the text, numbers would be interesting rather than only proportions.

« previously named M molecular form OF AN. GAMBIAE » (or remove it, as this precision may now be superfluous). On the contrary, « *An. species A* » is barely introduced, it would be interesting to mention something about this species and its identification (besides the quick explanation in the introduction).

Page 13

« Approximately 1000-fold higher », it is very much of an approximation (variable Ct values and potential variations in 16S copy number): it may be good to rephrase, mentioning that 1000 is an order of magnitude rather than approximately.

§2: « *An. moucheti* (wAnM-infected) » comes at the 2nd occurrence of wAnM.

Is the work clearly and accurately presented and does it cite the current literature?

Yes

Is the study design appropriate and is the work technically sound?

Yes

Are sufficient details of methods and analysis provided to allow replication by others?

Partly

If applicable, is the statistical analysis and its interpretation appropriate?

Yes

Are all the source data underlying the results available to ensure full reproducibility?

Yes

Are the conclusions drawn adequately supported by the results?

Partly

Competing Interests: No competing interests were disclosed.

We have read this submission. We believe that we have an appropriate level of expertise to confirm that it is of an acceptable scientific standard, however we have significant reservations, as outlined above.

Author Response 13 Nov 2018

Thomas Walker, London School of Hygiene & Tropical Medicine, UK

Dear Mathilde and Ottavia,

Firstly many thanks for your thoughtful and comprehensive review of our manuscript. We have tried to address all your comments below in **bold**:

Figure 7a is not very clear as one expects the scale to go from 0 to 100%, therefore we suggest to use a discontinued axis to present these interesting results.

We agree and have modified this figure for clarity

Finally the authors investigated the presence of Plasmodium in the studied mosquitoes, as Wolbachia is thought to interfere with some transmitted pathogens. This part is less convincing as the tests have been performed on DNA extraction from whole bodies or abdomens, while the presence of Plasmodium in head and thorax (or more specifically, in salivary glands) is a more suitable method to assess transmission potential. Moreover, the conclusions drawn on the interactions between Plasmodium and Wolbachia are not exactly clear. Considering that $10.16 + 1.56 = 11.72\%$ mosquitoes are infected with Wolbachia and $11.72 + 1.56 = 13.28\%$ are infected with Plasmodium, if there is no effect between Wolbachia and Plasmodium, you expect that $11.72\% \times 13.28\% = 1.56\%$ is infected by both. Surprisingly, this is exactly the result here. Biology is rarely so close to math, for so small numbers... The authors should thus state more clearly that their results favor no interactions, as confirmed by the p value which is very close to 1. On the contrary, the discussion currently suggests that the non significant correlation is due to small

numbers. However, one cannot jump to conclusion on the inability of *Wolbachia* to interfere with *Plasmodium*, as these results have been performed on abdomens and whole bodies, therefore we do not know whether the co-infected mosquitoes had just blood fed (and/or carried early stages of *Plasmodium*)

We agree and have modified our discussion on these results to make more appropriate conclusions based on our data

To improve the clarity of the article, it would be interesting to have an additional figure or table summarizing the experimental set up, explaining which mosquitoes are included in which analysis and which *Wolbachia* strain is found in which mosquitoes.

Many thanks for this suggestion. After careful consideration, we feel that an additional figure or table is not needed given we have figure 1 showing which *Anopheles* species were *Wolbachia*-infected and from which locations within countries and have all the PCR screening data from all samples available from Open Science

Framework: DOI 10.17605/OSF.IO/MW6XZ in addition to sample details for all accession numbers in the supplementary tables.

However, we have also modified table 1 to provide the comparison between *Plasmodium*-infected, *Wolbachia*-infected, *Asaia*-infected, co-infected individuals and uninfected individuals across all collection sites.

We also have minor comments on the manuscript:

The expression « resident strain » is not clear to us.

'Resident' *Wolbachia* strains are considered to have resulted naturally and have an evolutionary association with the host (*wAlbA* and *wAlbB* in *Ae. albopictus*) rather than have been generated artificially through transinfection (eg. *wMel* in *Ae. aegypti*).

We have modified our introduction to make this clearer by the inclusion of 'those naturally present in wild insect populations'

16S « rRNA » and « rDNA »: a consistent word may be used, rRNA seems more consensual.

We agree with this. For *Wolbachia* screening and phylogeny including strains in *Anopheles*, 16S rRNA is most commonly used (de Oliveira et al. 2015; Werren & Windsor 2000; Gomes et al. 2017; Baldini et al. 2014). We have checked our manuscript and corrected these errors.

The total number of mosquitoes, of *Wolbachia* infected mosquitoes, of *Asaia* infected ones, etc would be interesting.

We agree and have modified table 1 to include the number of infected mosquitoes for all categories (including uninfected individuals).

Page 3:

§2: *Asaia* is not an endosymbiont

We agree and have modified throughout the manuscript to reflect this mistake

§3: « have » needs probably to be removed in « than would have be identified using morphological identification alone »

We agree have corrected this sentence

§4 needs a first sentence identifying the gap of knowledge that the authors want to fill

We agree and have added the following sentence: “Investigating the prevalence and diversity of *Wolbachia* strains naturally present in *Anopheles* populations across diverse malaria endemic countries would allow a greater understanding of how this bacterium could be influencing malaria transmission in field populations and provide candidate strains for transinfection”

§5: Can the authors clearly state whether some mosquitoes had blood in their midgut?

We did not fully determine the Sella score of the mosquitoes used in our study so our collection likely contained individuals that had undigested blood. However, we have the following sentences in our discussion which we feel acknowledges the limitations of our study:

“However, detection of *P. falciparum* parasites in whole body mosquitoes does not confirm that the species plays a significant role in transmission. Detection could represent infected bloodmeal stages or oocysts present in the midgut wall so further studies are warranted to determine this species ability to transmit human malaria parasites.”

Page 4:

Figure 1: scale should be in km, miles is not an SI unit

We have changed this to km

§2: « DNA extraction and MOSQUITO species identification ». More generally, it is not always clear whether the authors speak about mosquitoes or *Wolbachia* strains.

We have added the word ‘mosquito’ prior to species identification for clarity

§3: « as preliminary trials revealed this was the optimal method for both sensitivity and specificity »: please add « data not shown » or remove it

We have removed this as it’s been shown before in multiple previous publications and is a well-established PCR assay for detection of *Plasmodium*.

Page 5:

Instead of μL of DNA, the actual quantity in ng would be preferable.

Although we did measure total DNA for selected samples and normalised *An. gambiae* extracts to Ct values for a single copy *An. gambiae rps17* housekeeping gene, we did not do this for all species across all countries so for consistency we feel μL of DNA is more representative of our work

All PCRs: primer sequences are needed

We have added all primer sequences were appropriate

§3: « Both chromatograms (forward and reverse traces) from each sample WERE manually »

We have changed this grammatical error

Pages 6-7

Table 1: probably some mistakes, e.g. *An. gambiae* in Mikalayi: 11.8% corresponds neither to 1/16 nor to 2/16, so all the numbers should be checked. It would be appropriate to enter the actual numbers in brackets, and to indicate the co-prevalence of *Wolbachia* and *Plasmodium*. The legend should be grouped below or above the table and the explanation about mosquitoes in bold is unclear.

In the text, numbers would be interesting rather than only proportions.

« previously named M molecular form OF AN. GAMBIAE » (or remove it, as this precision may now be superfluous). On the contrary, « *An. species A* » is barely introduced, it would be interesting to mention something about this species and its identification (besides the quick explanation in the introduction).

We have modified table 1 for clarity including numbers and removed the reference to M and S forms. The legend format is according to WOR guidelines and we have modified the table legend for clarity.

As very little is known about *An. species A* and what we were able to find on this species is presented in our discussion “*An. species A* should be further investigated to determine if this species is a potential malaria vector, given our study demonstrated *P. falciparum* infection in one of two individuals screened and ELISA-positive samples of this species were reported from the Western Highlands of Kenya⁴².”

Page 13

« Approximately 1000-fold higher », it is very much of an approximation (variable Ct values and potential variations in 16S copy number): it may be good to rephrase, mentioning that 1000 is an order of magnitude rather than approximately.

We have modified this sentence

§2: « *An. moucheti* (wAnM-infected) » comes at the 2nd occurrence of wAnM.

We have corrected this by removing ‘*An. moucheti*’

Competing Interests: No competing interests were disclosed.