

A mutation of the human *EPHB2* gene leads to a major platelet functional defect

Eliane Berrou¹, Christelle Soukaseum¹, Rémi Favier², Frédéric Adam¹, Ziane Elaib¹, Alexandre Kauskot¹, Jean-Claude Bordet³, Paola Ballerini², Stephane Loyau⁴, Miao Feng¹, Karine Dias², Abbas Muheidli¹, Stephane Girault⁵, Alan T. Nurden⁶, Ernest Turro^{7,8,9,10}, Willem H Ouwehand^{7,8,9,11}, Cécile V. Denis¹, Martine Jandrot-Perrus⁴, Jean-Philippe Rosa¹, Paquita Nurden⁶, Marijke Bryckaert¹

Running title: *EPHB2* and inherited platelet disorder

¹INSERM UMR_S 1176, Université Paris-Sud, Université Paris-Saclay, 80 rue du Général Leclerc, 94276 Le Kremlin Bicêtre, France. ²Assistance Publique - Hôpitaux de Paris, Armand Trousseau Children Hospital, Paris, INSERM UMR_S 1170, Villejuif, France. ³Hémostase, CBE-A3 Hospices Civils de Lyon, 59 Bd Pinel 69500 Bron, France. ⁴Hémostase, UCBL1 - Faculté de Médecine Lyon-Est 7 Rue G. Paradin 69372 LYON cedex 08, France. ⁵INSERM UMR_S 1148, Université Paris-Diderot, Hôpital Xavier Bichat, 75877 Paris cedex 18, France. ⁶Service d'Hématologie Clinique et Thérapie Cellulaire, 2, avenue Martin-Luther-King 87042 Limoges, France. ⁷Institut Hospitalo-Universitaire LIRYC, Hôpital Xavier Arnoz, avenue du Haut Lévêque, 33600 Pessac, France. ⁸National Institute for Health Research BioResource-Rare Diseases, Cambridge University Hospitals, Cambridge, United Kingdom, ⁹Department of Haematology, University of Cambridge, Cambridge Biomedical Campus, Cambridge, United Kingdom, ¹⁰National Health Service Blood and Transplant, Cambridge Biomedical Campus, Cambridge, United Kingdom, ¹¹Medical Research Council Biostatistics Unit, Cambridge Institute of Public Health, Cambridge Biomedical Campus, Cambridge, United Kingdom. ¹¹Wellcome Trust Sanger Institute, Wellcome Trust Genome Campus, Hinxton, Cambridge, United Kingdom.

Number of words: 3922

Abstract: 250 **Number of figures and tables:** 7

Number of references: 25

Correspondence: Marijke Bryckaert Ph.D; INSERM UMR_S 1176

Hôpital Bicêtre, 80 rue du Général Leclerc, 94276 Le Kremlin Bicêtre Cedex, France.

Email: marijke.bryckaert@inserm.fr Tel: +33 149595642 Fax: +33 146719472

Scientific category: Platelets and thrombopoiesis

Key points

EPHB2 tyrosine kinase receptor plays an important role in platelet function through cross-talk with GPVI and GPRC signaling.

A novel EPHB2 variant causes an inherited platelet function disorder.

Abstract

The ephrin transmembrane receptor (EPHR) family of tyrosine kinases is involved in platelet function. We report the first *EPHB2* variant affecting platelets in two siblings (P1 and P2) from a consanguineous family with recurrent bleeding and normal platelet counts. Whole exome sequencing identified a c.2233C>T variant (missense p.R745C) of the *EPHB2* gene. P1 and P2 were homozygous for this variant while their asymptomatic parents were heterozygous. The p.R745C variant within the tyrosine kinase domain was associated with defects in platelet aggregation, α IIb β 3 activation and granule secretion induced by GPCR (G protein-coupled receptors) agonists and convulxin as well as in thrombus formation on collagen under flow. In contrast, clot retraction, flow-dependent platelet adhesion and spreading on fibrinogen were only mildly affected indicating limited effects on α IIb β 3 outside-in signaling. Most importantly, Lyn, Syk and FcR γ phosphorylation, the initial steps in GPVI platelet signaling were drastically impaired in the absence of platelet-platelet contact indicating a positive role for EPHB2 in GPVI activation. Likewise platelet activation by PAR4-AP showed defective Src activation, as opposed to normal PKCs activity and Ca²⁺ mobilization. Overexpression of wild-type (WT) and R745C EPHB2 variant in RBL-2H3 cells (Rat Basophilic Leukemia cells) stably expressing human GPVI, confirmed EPHB2 R745C mutation impaired EPHB2 autophosphorylation, but had no effect on ephrin ligand-induced EPHB2 clustering, suggesting it did not interfere with EPHB2-ephrin-mediated cell-to-cell contact. In conclusion, this novel inherited platelet disorder affecting EPHB2 demonstrates this tyrosine kinase receptor plays an important role in platelet functions, through a cross-talk with GPVI and GPCR signaling.

Introduction

EPH receptors (erythropoietin-producing hepatoma-amplified sequence) are a large family of transmembrane tyrosine kinases that interact with ephrin ligands. These receptors, composed of an N-terminal glycosylated ligand-binding domain, a transmembrane region and an intracellular kinase domain, are divided into two subclasses A and B, based on sequence similarity and ligand affinity. Their ligands are also divided into two subclasses, the A-subclass [A1-A6] which is tethered to the cell membrane by a glycosylphosphatidylinositol anchor and the B-subclass [B1-B3] which has a transmembrane domain followed by a short cytoplasmic region. Generally, ephrinA ligands bind to EPHA receptors, while the ephrinB ligands bind to the EPHB receptors. One exception is EPHA4 that can bind both ephrinsA and B. Ligand-receptor interactions initiate clustering, tyrosine phosphorylation and signaling of EPHs.^{1,2} Cell surface clustering of the ligated ephrins elicits signaling in ephrin-bearing cells.^{3,4} EPH receptors and ephrins are expressed in virtually all tissues and they are involved in several biological functions including vascular development, tissue border formation, cell migration, axon guidance², memory learning,⁵ bone homeostasis,⁶ insulin secretion⁷ and neurological development. These cellular responses to EPH-ephrin signaling also include changes in the actin cytoskeleton, cell-substrate adhesion, cell motility as well as modulation of cell survival and proliferation. Finally EPH-ephrins are involved in various pathologies such as neurological disorders and cancer in which EPHs and ephrins function during tumor invasion, neoangiogenesis and metastasis.^{1,8} Indeed, several EPHs have been shown to exhibit tumor suppressor roles in prostate, colon and breast tumors⁹⁻¹¹ prompting their exploration as potential therapeutic targets.

Human platelets are known to express EPHA4, EPHB1 and its ligand ephrinB1.¹²⁻¹⁴ They promote platelet adhesion and aggregation as well as stability of the hemostatic plug, whereas inhibition of the EPH/ephrin interaction leads to disaggregation at low doses of agonists. EPHA4 and EPHB1 are also involved in adhesion to the fibrinogen matrix, triggering tyrosine phosphorylation of the $\beta 3$ cytoplasmic domain of $\alpha IIb\beta 3$ and $\alpha IIb\beta 3$ -

mediated outside-in signaling controlling platelet spreading and platelet retraction. Recently, Vaiyapuri et al¹⁵ using transgenic mice (*EPHB2^{LacZ}*) expressing a chimeric EPHB2- β -galactosidase protein (with preserved ephrin binding but abrogated tyrosine kinase activity) concluded that EPHB2 was involved in the regulation of thrombus formation and retraction. Most importantly, they showed that the cytoplasmic tail of EPHB2 regulates platelet activation in a contact-independent manner in the absence of EPHB2-ephrin ligation between platelets.

We now report a new recessive bleeding disorder with impaired platelet function and a signaling defect that cosegregates with a predicted disease-causing *EPHB2* gene variant affecting the EPHB2 receptor. The missense homozygous mutation p.R745C is located in the tyrosine kinase domain of EPHB2 and modifies a potential phosphorylation site. Both affected siblings from a consanguineous family were homozygous for the mutation. The defect gives impaired platelet aggregation and secretion induced by various agonists (thrombin, ADP and convulxin (Cvx), decreased adhesion and thrombus formation on collagen with modified GPVI and GPCR signaling. Overexpression of wild-type and variant EPHB2 in Rat Basophilic Leukemia (RBL)-2H3 cells stably expressing human GPVI suggests that EPHB2 regulates positively GPVI signaling.

Methods

Further details of material and methods are provided in supplemental data.

Patients.

Two patients, brother (P1) and sister (P2) with an inherited bleeding syndrome were the object of clinical and biological studies in the Bordeaux Reference Center for Platelet Pathologies prior to being enrolled within the BRIDGE-Bleeding and Platelet Diseases (BPD) cohort (UK REC10/H0304/66) (Cambridge, UK) after informed consent and in accordance with the Declaration of Helsinki. Studies were performed under the promotion of the Ethics Committee of Ile de France IV (IRB 00003835). Whole exome

sequencing (WES) identified a list of about 200 variants for each patient that were then assessed taking into account the consanguinity of the family and their phenotype.

EPHB2 expression in cell line

EPHB2-R745C cDNA was generated by site directed mutagenesis of the full-length wild-type (WT) *EPHB2* cDNA fused to the fluorescent reporter protein GFP and inserted in the pcDNA3 expression vector. WT or mutant *EPHB2* cDNAs were transiently transfected into RBL-2H3 cells¹⁶ by nucleofection using the Neon transfection system (Invitrogen-ThermoFisher Scientific, Saint-Aubin, France) according to the manufacturer's instructions (1 µg of plasmid DNA for 10⁵ cells).

Statistical Analysis

The presented results are mean ± Standard Error of the Mean (SEM). Data distribution was analyzed using the Student *t* test or 1-way ANOVA followed by Tukey's multiple comparison test. *P*-values<0.05 were considered as statistically significant (* *P*<0.05, ** *P*<0.01, *** *P*<0.001). Results with *P*-value>0.05 were considered as not significant.

Results

Patient characterization

The two affected patients are siblings of a consanguineous family (pedigree in Figure 1A). The brother P1 and his sister P2, now young adults, were respectively 12 and 15 years old when initial platelet investigations were performed (Table S1). In both cases excessive spontaneous subcutaneous bleeding, and heavy bleeding after minor wounds were observed. In addition P1 developed during childhood an anemia resulting from chronic gastro-intestinal bleeding requiring iron treatment. The ISTH-BAT-bleeding score¹⁷ was 11 for P1 and 6 for P2. No other associated syndromes were observed. Both parents were asymptomatic. The platelet count was normal for all family members, but in a recent investigation (10 years later) a mild decrease in platelet count was noted for P1 (120×10^9 platelets/L). Other hematopoietic lineages were normal for all the family (Table S1). The initial platelet function investigations revealed a decreased response to ADP, arachidonic acid, collagen and U46619 but a normal response to ristocetin (Table S1). Platelet responses were normal for both parents. Evaluation of platelet ATP/ADP content using the luciferin-luciferase procedure and dense granule number evaluated by whole mount electron microscopy revealed normal values for the patients P1 and P2 and their parents (Table S2). Other platelet function investigations detailed below were performed after the *EPHB2* variant was selected as the primary disease-causing candidate.

Genetic analysis

Six non-synonymous homozygous rare variants shared by the two patients were identified by whole exome sequencing (WES) (Table S3) provided by BRIDGE-BPD, including p.R745C *EPHB2*. On the basis of the clinical and biological phenotype of both patients and similarities with the recent phenotype published for the β -Gal-*EPHB2* transgenic mouse model¹⁵, *EPHB2* was selected as the most likely candidate gene. This

gene located on chromosome 1 encodes the EPHB2 receptor tyrosine kinase. The homozygous c.2233C>T transition was predicted to give rise to a p.R745C missense variant of the EPHB2 protein (transcript NM_004442.6). PolyPhen-2 software and the Sift score predicted the variant to be damaging with high probability. This *EPHB2* variant was present in the ExAC database at minor allele frequency (MAF) $<10^{-6}$ showing that it is not a common polymorphism. Sanger sequencing of this variant in all individuals of the family confirmed that P1 and P2 were homozygous for the c.2233C>T transition whereas the parents were heterozygous (Figure 1B). Interestingly, the variant amino acid is located in the tyrosine kinase intracytoplasmic domain of the molecule affecting one of the predicted tyrosine kinase phosphorylation site (Figure 1C).¹⁸ Indeed, EPHB2 phosphorylation on Y594/604 (EPHB2-p-Y594/604) located in the juxtamembrane domain and required for kinase activity was increased in control platelets induced by Cvx (800 pM) while phosphorylation of tyrosines 594/604 was diminished in P1 platelets (Figure 1D). The tyrosine kinase domain including R745 is highly conserved among the different animal species from homo sapiens to fish (*D rerio*), suggesting a strong functional impact for the R745C mutation. Finally, R745 is located immediately before D746, the presumed proton acceptor essential for ATP-dependent kinase active site of the EPHB2 kinase domain. It is thus likely that changing the bulky basic R745 for the much smaller neutral C745 will interfere with D746 function.

None of the other five candidate rare variants were predicted to be disease causing and no other candidate mutations were present in any gene known to be associated with an inherited platelet-derived bleeding disorder.

Morphological and structural characterization of patients' platelets

Platelet count and volume for both patients were normal during their adolescence whereas the platelet count slightly decreased for patient P1 when 21 years old. Electron microscopy revealed heterogeneity in platelet shape, while some platelets appeared thin, discoid and abnormally elongated, others were round (Figure 2a-f). A defect in

fragmentation was suggested by platelets with a sickle shape and extensions of the plasma membrane (Figure 2a,f). Some large fragments of MK were present in the blood (Figure 2c,g), as were barbel-shaped preplatelets (Figure 2e). Quantitative morphometric evaluation of platelets of both patients confirmed a mean increase in maximal diameter (P1: $3.61 \pm 0.84 \mu\text{m}$, $p \leq 0.001$, P2: $3.72 \pm 0.83 \mu\text{m}$, $p \leq 0.001$ versus control: $2.85 \pm 0.15 \mu\text{m}$) whereas the minimal diameter was close to normal values (Table S4). As a consequence the ratio between maximal and minimal diameter was much increased (P1: 2.79 ± 1.22 , $p \leq 0.1$ and P2: 3.27 ± 1.49 , $p \leq 0.001$ versus control: 2.4 ± 0.1). The large standard deviation reflects the heterogeneity. For patient P1 with the recent slight decrease in platelet count the morphological platelet characteristics remain the same. Evaluation by manual counting of microtubule coils in electron microscopy photos revealed a similar number of microtubule coils for patient and control (control: 14.2 ± 4.6 microtubules versus P1: 14.6 ± 4.4 microtubules (not illustrated). Quantification of the levels of EPHB2 (Figure S1A) and other membrane receptors, GPVI, FcR γ , $\beta 1$ and $\alpha \text{IIb}\beta 3$ (Figure S1B), α -granule contents (fibrinogen), α -granule/dense granule membrane marker (P-selectin) and $\beta 1$ -tubulin for microtubules (Figures S1C-E) were normal.

EPHB2 variant associates with decreased platelet aggregation and $\alpha \text{IIb}\beta 3$ activation

Because initial platelet characterization showed abnormal platelet function, we looked in detail at platelet aggregation, secretion and $\alpha \text{IIb}\beta 3$ activation in both patients (P1 and P2). Aggregation of washed platelets induced by various concentrations of ADP (10 and 20 μM), thrombin (25 and 50 mU/mL) and PAR4-AP (50 μM) was strongly impaired (Figures 3A-3C-4A) but secretion was only partially affected (dense and α -granules) in both patients (Figures 3E-3F-4C). Since aggregation requires $\alpha \text{IIb}\beta 3$ activation, we next quantified $\alpha \text{IIb}\beta 3$ activation by binding of PAC1, a mAb specific for the activated

conformation of human α IIb β 3 integrin. In the absence of stirring, α IIb β 3 activation induced by ADP, thrombin or PAR4-AP was totally abolished in both patients (Figures 3B-3D-4B). We next investigated PAR4-AP-induced signaling after removal of secreted ADP by apyrase (2U/mL) and inhibition of thromboxane A₂ synthesis by indomethacin (10 μ M). Because no Ca²⁺ mobilization was observed with PAR4-AP (50 μ M) in unstirred control platelets (results not shown), higher doses of PAR4-AP (100 μ M and 200 μ M) were used (Figure 4D). Ca²⁺ mobilization and phosphorylation of PKC substrates were similar in P1 and controls indicating that the activity of PLC β 3 was normal in P1 (Figure 4D-4E). In contrast, no increase in PAR4-AP-induced Src activity, as assessed by the phosphorylation level of the amino acid Y418, was observed in P1 (Figure 4F) indicating that EPHB2 acts close to or directly on the tyrosine kinase Src and thus downstream of PLC β 3.

Since EPHB2 has been shown to be important for GPVI signaling,¹⁵ we next investigated convulxin (Cvx)-induced platelet aggregation. Cvx (200 to 800 pM)-induced platelet aggregation was totally abolished in both patients at low doses of Cvx (P1: 200 pM, P2: 200 and 400 pM) and drastically decreased at higher doses (Figure 5A). Similar results were obtained for collagen-induced platelet aggregation in platelet-rich-plasma (Table S1). In parallel PAC1 binding to α IIb β 3 in the patients' platelets was completely abolished whatever the concentrations of Cvx used (200 to 800 pM) (Figure 5B). We next measured α IIb β 3 activation triggered by Cvx after removal of ADP by apyrase (2U/mL) and inhibition of thromboxane A₂ synthesis by indomethacin (10 μ M). The partial α IIb β 3 activation observed in control platelets under these conditions, was therefore directly dependent on GPVI (Figure 5C). The total absence of α IIb β 3 activation observed in patients' platelets under the same conditions (apyrase and indomethacin) showed that the EPHB2 mutation directly affected GPVI signaling. Altogether, these results demonstrate that the EPHB2 mutation affects platelet aggregation and α IIb β 3 activation in a manner both dependent and independent of GPVI signaling.

Convulxin-induced platelet secretion and thrombus formation on collagen matrix are impaired in patients with the EPHB2 variant.

We next quantified dense and α -granule secretion by measuring ATP release and P-selectin exposure. The total content of α -granule (fibrinogen) (Figure S1C) and dense granule secretion (ATP) was checked and confirmed to be normal (results not shown). In Cvx-induced aggregation, ATP release was decreased by 60 to 70% for P1 platelets and 44 to 100% for P2 platelets compared with control platelets (Figure S2A). In unstirred conditions, P-selectin exposure at low dose of Cvx (200 pM) was 71% and 74% lower in P1 and P2 platelets than in control platelets (Figure S2B). The addition of apyrase (2U/mL) and indomethacin (10 μ M) clearly showed that the decrease in P-selectin exposure is largely dependent on GPVI signaling in P1 and P2 (Figure S2C). Only a small part of P-selectin exposure was dependent on ADP release and TXA₂ synthesis under unstirred conditions (Figures S2B-C).

We next assessed the impact of this variant on adhesion and thrombus formation on a collagen matrix at arterial shear rate (1500 s⁻¹). For these experiments, platelet counts were normalized. The area covered by P1 and P2 platelets was slightly lower reaching 80.5% and 72.5% of controls (100%) (P1: $P<0.01$; P2: $P<0.05$) (Figure 5D, upper panel). Thrombus size was significantly decreased for P1 and P2 reaching 37.6% for P1 ($P<0.001$) and 32.2% for P2 ($P<0.001$) (Figure 5D, bottom panel). On addition of apyrase and indomethacin the residual adhesive platelets and thrombus size were always significantly lower in P1 ($P<0.05$) and in P2 ($P<0.001$) compared with controls (Figure 5D); thus decreases for the patients' platelets were both dependent and independent of GPVI signaling. Altogether, these results indicate that the EPHB2 mutation affects secretion and GPVI signaling involved in thrombus formation.

EPHB2 variant only mildly affects α IIb β 3 outside-in signaling

Because EPHB2 has been reported to be physically associated with α IIb β 3 in mouse platelets, and to be involved in the regulation of the outside-in signaling,¹⁵ we next investigated the impact of this *EPHB2* variant on α IIb β 3-mediated outside-in signaling. First, the kinetics of clot retraction was analyzed in platelet rich plasma (PRP) after addition of various concentrations of thrombin (0.1 and 0.5 U/mL). A reduction of clot retraction induced by 0.1U/mL thrombin was already observed at 20 minutes reaching 53.8% and 38.2% of control values for P1 and P2; however after 1 hour of thrombin (0.1U/mL) or at a higher concentration of thrombin (0.5U/mL), clot retraction normalized (Figure S3A). Because the lower rate of clot retraction may be explained by a defective response to thrombin (thrombin-induced platelet aggregation and α IIb β 3 activation were partly decreased in P1 and P2: Figure 3C), we next examined adhesion to fibrinogen matrix (100 μ g/mL) under low shear conditions (300 s⁻¹) and in the presence of apyrase/indomethacin. Adhesion was moderately but significantly reduced, reaching 79% ($P<0.01$) and 67% ($P<0.01$) of controls (100%) for P1 and P2 respectively (Figure S3B). Note that spreading on a fibrinogen matrix (100 μ g/mL) under static conditions was also moderately decreased (78.5% of control) (Figure S3C). Altogether these results indicate that the *EPHB2* variant only slightly alters platelet α IIb β 3 outside-in signaling.

GPVI signaling pathway is impaired in the patients' platelets.

To get insight into the mechanism of the regulation of platelet function by EPHB2, we next examined the signaling pathway downstream of GPVI using unstirred platelets in the presence of apyrase/indomethacin, preventing superimposed signaling by ADP or thromboxane A₂. First we assessed Ca²⁺ mobilization from intracellular stores, essential for platelet activation and secretion. Flow cytometry of Oregon Green BAPTA1-AM loaded platelets stimulated with Cvx (200 to 800 pM) showed a lower Ca²⁺ mobilization for P1 (Figure 6A) and P2 (Figure S4) whatever the concentration of agonist used. The

activation of PI3-kinase and PLC γ 2, important players in GPVI signaling, as assessed by the phosphorylation level of its effector Akt (Akt: p-S473) and PLC γ 2 (PLC γ 2-p-1217) were totally or partially abolished for P1 (Figure 6B). We next examined the initial steps of GPVI signaling by measuring the phosphorylation of the tyrosine phosphorylation of the ITAM motif of FcR γ (FcR γ -P) and the tyrosine kinase Syk (Syk: p-Y525/526) associated with GPVI. Syk-P and FcR γ -P as detected by anti-Syk-P and anti-phosphotyrosine antibodies, respectively, were also drastically impaired in P1 platelets (Figure 6C) strongly suggesting that EPHB2 regulates the first steps of the GPVI signaling pathway. Since the activation of Src kinases (Lyn, Fyn), constitutively associated with GPVI, plays a critical role in initiating GPVI signaling by mediating the phosphorylation of FcR γ and Syk on tyrosine residues, we next examined the phosphorylation of Lyn. Lyn contains 2 highly conserved tyrosine residues, the C-terminal one exhibiting an inhibitory activity (Lyn: p-Y507), the other one being part of the activation loop (Lyn p-Tyr 396).¹⁹ Under our conditions, as expected, Lyn activation (Lyn p-Y396) was increased in control platelets after Cvx stimulation (Figure 6D). Conversely, no increased phosphorylation of Lyn p-Tyr 396 after Cvx stimulation was observed in P1 platelets. Altogether, these results confirm that EPHB2 acts during the initial step of GPVI signaling and independently of platelet-platelet contact.

Confirmation of the effect of EPHB2 R745C mutation on EPHB2 function by overexpression in GPVI-expressing RBL-2H3 cells.

One of the key features of EPH receptors is that they undergo autophosphorylation upon cross-linking, usually mediated by cell-cell contact and ephrin engagement. To test whether EPHB2 R745C mutation affected autophosphorylation in the absence of cell-cell contact, we made use of the RBL-2H3 cell line stably expressing recombinant human GPVI and in which WT- and EPHB2-variant constructs were overexpressed. The efficiency of transfection was between 30% to 40% for EPHB2-WT and the EPHB2-

variant. In the absence of Cvx, no phosphorylation of EPHB2 was observed in WT and mutant EPHB2 (Figure 7A). RBL-2H3 cells activation by Cvx (1 nM), led to phosphorylation of WT and mutant EPHB2 but to a lesser extent for the latter (50% of WT-EPHB2) indicating that GPVI activation can activate EPHB2 in the absence of ephrin-EPHB2 interaction.

For the patients, we found that the abnormal platelet response was not dependent on cell-cell contact thus excluding a role for the ephrin ligands EPHB2-GPVI cross-talk. To confirm these results we tested the capacity of EPHB2 to form clusters in the presence of an ephrin-Fc ligand in cell line considering that EPHB2 clustering by ephrin mimics EPHB2 response to cell-cell contact. First, WT-EPHB2 clustering increased with the level of recombinant WT-EPHB2 in RBL-2H3 cells (Figure 7B). No statistical difference was seen for the EPHB2 mutant in the presence or absence of Cvx and whatever the level of GFP-WT and -EPHB2-variant overexpressed (Figure 7B). Altogether, these results indicate that the EPHB2/p.R745C variant interferes with the first steps of cell activation in a contact-independent manner but has no direct functional effect in conditions of cell-cell contact.

Discussion

Evidence is growing that EPHB2 plays major roles in platelet function. Here we identified a new inherited platelet bleeding disorder affecting the *EPHB2* gene in two siblings from a consanguineous family. Both are homozygous for the missense EPHB2/p.R745C variant whereas the asymptomatic parents were heterozygous for this variant. Both patients exhibited recurrent bleeding and normal or slightly decreased platelet counts. Platelet functions (aggregation, secretion induced by different agonists, thrombus formation on a collagen matrix) and α IIb β 3 activation were severely impaired. In contrast, clot retraction and adhesion on a fibrinogen matrix under flowing blood were only moderately affected. This indicates that the EPHB2 variant mostly affects α IIb β 3 inside-out rather than outside-in signaling.

This variant identified by WES was selected among a group of homozygous variants common to both siblings and in a heterozygous state in both parents and (Table S3) on the basis of similarities between patients' platelet phenotype and platelet defects reported in transgenic mice expressing EPHB2 with the cytoplasmic domain replaced by β -galactosidase.¹⁵ Few inherited platelet function disorders affecting several agonists have been described, the most common being Glanzmann's thrombasthenia and more recently the CalDAG-GEFI related-disorder²⁰ a severe bleeding disorder resulting from a signaling protein defect, primarily involving the inside-out activation of α IIb β 3.^{21,22} The abnormalities for *EPHB2* were not limited to platelet function but also concerned platelet morphology with occasional thin and abnormally long platelets completely different from the large platelets that characterize macrothrombocytopenia (MYH9-RD, FLNA-RD, BSS, VWD2B) where the majority of platelets are spheroid and of large size with an increased small diameter.²³ Nonetheless, this observation suggests a role for EPHB2 in platelet biogenesis.

The defect in platelet functional responses to several agonists was particularly evident for collagen and Cvx. In the absence of platelet-to-platelet contact, proximal GPVI signaling in the patients' EPHB2 was characterized by an impaired phosphorylation of Lyn, FcR γ and Syk suggesting that EPHB2 acts directly on GPVI and independently of its ligand, ephrin (that is dependent upon signaling processes involving direct contact between cells). GPVI activation triggered auto-phosphorylation of both WT and EPHB2/p.R745C but to a lesser extent for the latter suggesting impaired kinase activity. Interestingly, it has been shown that the auto-phosphorylation site of EPHB2 was the predominant binding site for the tyrosine kinase Src.²⁴ Thus a direct or indirect association of EPHB2 with Src kinases (Fyn and Lyn) constitutively bound to GPVI is an attractive possibility and should be tested. In good agreement with our observation, platelets from transgenic mice for β -galactosidase-EPHB2 displayed diminished phosphorylation of Akt and PLC γ 2, similar to what we observed in the patients' platelets.

Surprisingly phosphorylation of Src, Lyn and Syk was normal in EPHB2- β Gal mice but low in our patient. The reason for this difference is unclear, and may lie in the difference between the deletion of (or its swapping for β -galactosidase) the entire cytoplasmic tail of EPHB2 and the Arg:Cys missense mutation, or in species differences.

Another important question was what happens when the ephrin binds to EPHB2/p.R745C, conditions encountered in platelet aggregation. Indeed, the interaction of EPH and ephrinB1, the only ephrin identified in platelets have been shown to contribute to sustained platelet aggregation.¹⁴ The clustering of EPHB2/p.R745C, quantified after addition of ephrin B1, was not significantly affected: consequently we speculate that the p.R745C variant does not affect EPHB2-ephrin B1 ligand-mediated platelet-platelet contact and thus thrombus stability. These data are in agreement with the EPHB2- β -Gal transgenic mouse model, where replacement of EPHB2 cytoplasmic tail by β -Gal does not diminish clustering and signaling through ephrinB1.¹⁵ The impaired platelet aggregation was essentially the result of the absence of α IIb β 3 activation due to impaired GPVI proximal signaling.

While an inherited GPVI defect leads only to a mild bleeding phenotype,²⁵ both of our patients with the EPHB2 variant exhibit a severe bleeding phenotype strongly suggesting that EPHB2 is involved in other regulatory platelet or vascular functions. Most likely this is because thrombin and ADP pathways are also strongly impaired, as shown on our aggregation and secretion studies with these agonists. Moreover, whereas PAR4-AP-induced PKCs activity and Ca^{2+} mobilization were normal in P1, Src kinase activity was inhibited indicating that EPHB2 plays a relevant role at a distal level of G-coupled receptors. The fact that EPHB2/p.R745C affects the phosphorylation of Lyn and Src induced respectively by Cvx and PAR4-AP, suggests that this EPHB2/p.R745C inhibits phosphatases involved in the dephosphorylation of inhibitory tyrosine residues of Src required for its activation.¹⁹

In summary, we describe a new inherited platelet disorder of a EPHB2/p.R745C variant characterized by a bleeding syndrome, abnormal elongated platelets and a severe platelet function defect. Importantly, this EPHB2 variant alters GPVI signaling at the level of the GPVI receptor in the absence of cell-cell contact excluding involvement of ephrin binding during the initial platelet activation and GPCR signaling. Despite documented EPHB2 expression in many cell types, the absence of associated clinical signs (other than the bleeding syndrome) in the patients suggests that the effects of this variant are essentially restricted to the megakaryocyte-platelet lineage, most likely because of the absence of compensatory mechanisms (other EPH receptors?) in this lineage, present in other tissues.

Acknowledgments

The authors wish to thank the patients who participated to this study. They wish also to thank Alice Davy and Thomas Jungas from the University of Toulouse and Nicolas Prévost from the University of Kyoto for fructuous discussion exchanges, Bruno Copin, engineer in bioinformatics from Trousseau Hospital, and Christelle Repérant from U1176 INSERM for her technical assistance.

Funding acknowledgements

This work was financially supported by a grant from INSERM.

Author contributions

E.B., C.S., F.A., R.B., A.K., Z.E., M.F., K.D., A.M., J-C.B., P.B., S.L., M.B. performed experiments; P.N., R.F.,S.G. gave clinical data and enrolled the patients; E.T. performed the bioinformatic analysis of DNA sequencing data; E.B., J-P.R., P.N., M.B. analyzed results; E.B., J-P.R., M.B. designed experiments; E.B., P.N., J.-P.R., M.B wrote the

manuscript; E.B., C.S., R.F., F.A., A.K., A.T., J-C.B., E.B., W.H.O., C.D., M.J-P., J-P.R. critically edited the manuscript.

Disclosure of conflicts of interest

The authors have declared that there are no relevant conflicts of interest.

References

1. Pasquale EB. Eph receptors and ephrins in cancer: bidirectional signalling and beyond. *Nat Rev Cancer*. 2010;10(3):165-180.
2. Kania A, Klein R. Mechanisms of ephrin-Eph signalling in development, physiology and disease. *Nat Rev Mol Cell Biol*. 2016;17(4):240-256.
3. Daar IO. Non-SH2/PDZ reverse signaling by ephrins. *Semin Cell Dev Biol*. 2012;23(1):65-74.
4. Davy A, Soriano P. Ephrin signaling in vivo: look both ways. *Dev Dyn*. 2005;232(1):1-10.
5. Gerlai R. EphB and NMDA receptors: components of synaptic plasticity coming together. *Trends Neurosci*. 2002;25(4):180-181.
6. Zhao C, Irie N, Takada Y, et al. Bidirectional ephrinB2-EphB4 signaling controls bone homeostasis. *Cell Metab*. 2006;4(2):111-121.
7. Konstantinova I, Nikolova G, Ohara-Imaizumi M, et al. EphA-Ephrin-A-mediated beta cell communication regulates insulin secretion from pancreatic islets. *Cell*. 2007;129(2):359-370.
8. Janes PCDTW, Adikari S, Lackmann M. Eph/ephrin signalling and function in oncogenesis: lessons from embryonic development. *Curr Cancer Drug Targets*. 2008;8(6):473-479.
9. Huusko P, Ponciano-Jackson D, Wolf M, et al. Nonsense-mediated decay microarray analysis identifies mutations of EPHB2 in human prostate cancer. *Nat Genet*. 2004;36(9):979-983.

10. Batlle E, Bacani J, Begthel H, et al. EphB receptor activity suppresses colorectal cancer progression. *Nature*. 2005;435(7045):1126-1130.
11. Noren NK, Foos G, Hauser CA, Pasquale EB. The EphB4 receptor suppresses breast cancer cell tumorigenicity through an Abl-Crk pathway. *Nat Cell Biol*. 2006;8(8):815-825.
12. Prevost N, Woulfe D, Tanaka T, Brass LF. Interactions between Eph kinases and ephrins provide a mechanism to support platelet aggregation once cell-to-cell contact has occurred. *Proc Natl Acad Sci U S A*. 2002;99(14):9219-9224.
13. Prevost N, Woulfe DS, Tognolini M, et al. Signaling by ephrinB1 and Eph kinases in platelets promotes Rap1 activation, platelet adhesion, and aggregation via effector pathways that do not require phosphorylation of ephrinB1. *Blood*. 2004;103(4):1348-1355.
14. Prevost N, Woulfe DS, Jiang H, et al. Eph kinases and ephrins support thrombus growth and stability by regulating integrin outside-in signaling in platelets. *Proc Natl Acad Sci U S A*. 2005;102(28):9820-9825.
15. Vaiyapuri S, Sage T, Rana RH, et al. EphB2 regulates contact-dependent and contact-independent signaling to control platelet function. *Blood*. 2015;125(4):720-730.
16. Mangin PH, Onselae MB, Receveur N, et al. Immobilized fibrinogen activates human platelets through GPVI. *Haematologica*. 2018;103(5): 898-907.
17. Rodeghiero F, Tosetto A, Abshire T, et al. ISTH/SSC bleeding assessment tool: a standardized questionnaire and a proposal for a new bleeding score for inherited bleeding disorders. *J Thromb Haemost*. 2010;8(9):2063-2065.
18. Kalo MS, Yu HH, Pasquale EB. In vivo tyrosine phosphorylation sites of activated ephrin-B1 and ephB2 from neural tissue. *J Biol Chem*. 2001;276(42):38940-38948.
19. Senis YA, Mazharian A, Mori J. Src family kinases: at the forefront of platelet activation. *Blood*. 2014;124(13):2013-2024.
20. Nurden AT, Nurden P. Inherited disorders of platelet function: selected updates. *J Thromb Haemost*. 2015;13 Suppl 1:S2-9.

21. Lozano ML, Cook A, Bastida JM, et al. Novel mutations in RASGRP2, which encodes CalDAG-GEFI, abrogate Rap1 activation, causing platelet dysfunction. *Blood*. 2016;128(9):1282-1289.
22. Canault M, Saultier P, Faure S, et al. Peripartum bleeding management in a patient with CalDAG-GEFI deficiency. *Haemophilia*. 2017;23(6):e533-e535.
23. Nurden AT, Freson K, Seligsohn U. Inherited platelet disorders. *Haemophilia*. 2012;18 Suppl 4:154-160.
24. Zisch AH, Kalo MS, Chong LD, Pasquale EB. Complex formation between EphB2 and Src requires phosphorylation of tyrosine 611 in the EphB2 juxtamembrane region. *Oncogene*. 1998;16(20):2657-2670.
25. Dumont B, Lasne D, Rothschild C, et al. Absence of collagen-induced platelet activation caused by compound heterozygous GPVI mutations. *Blood*. 2009;114(9):1900-1903.

Figure Legends

Figure 1: Identification of *EPHB2* mutation. In A, the panel corresponds to the family tree (boxes, males and circles, females), the variant is indicated for P1 and P2 in solid black, while parents heterozygous for the mutation are indicated as half black box and circle ("+" signifies presence of the variant in one allele and "-" the wild type in the other allele). In panel B are shown Sanger sequences surrounding the mutation (arrow) within the *EPHB2* gene for patient P1 (upper sequence, homozygote), the mother (heterozygote) and an unaffected control. The panel C corresponds to the schematic representation of identified domains of the protein EPHB2, (Fn signifies fibronectin and SAM sterile alpha motif). In panel D, phosphorylation of EPHB2 (EPHB2-pY594/604) in the presence or absence of Cvx (800 pM) was assessed in control and P1 platelets. Vertical lines have been inserted to indicate a repositioned gel lane.

Figure 2: *EPHB2* mutation affects platelet morphology.

Illustration of the typical platelet ultrastructure for control (upper panel) and patients (P1) a-c, (P2) d-g, by transmission electron microscopy (TEM). Panels a-b) show elongated platelets P1 with increased maximal diameter and a discoid shape containing few granules and the abnormal presence of membrane complexes (MC). Panel a) shows examples of platelets with a sickle shape, extensions of the plasma membrane suggesting a defect of fragmentation (*). Panel c) corresponds to what appears to be a fragment of a megakaryocyte (MK) with the aspect of an unfragmented proplatelet. Panels d-g correspond to platelets from P2. In d) discoid platelets with numerous membrane complexes. In panel f) a lower magnification shows the heterogeneity in platelet shape with some discoid and thin while others are round. In panel e) an apparent preplatelet with a barbell-shaped appearance. In panel g) is shown again an unfragmented MK. Scale bars indicated the magnification.

Figure 3: Platelet aggregation, secretion and α IIb β 3 activation induced by ADP or thrombin are impaired in both patients.

(A-C) Aggregation of washed platelets was initiated by various concentrations of ADP (10 and 20 μ M), thrombin (25 and 50 mU/mL) during 3 minutes. Aggregation was expressed as the percentage change in light transmission, with the value of the blank (buffer without platelets) set at 100%. Tracings are representative of at least two experiments per patient. (B-D) Quantification of activated α IIb β 3 at the surface of washed platelets was assessed by flow cytometry by binding of the specific mAb PAC1 to control and P1 and P2 platelets upon activation with ADP (5 and 10 μ M), thrombin (50 and 100 mU/mL). (E-F) Quantification of P-selectin exposure was assessed by flow cytometry using anti-P selectin antibody and dense granule release with an ATP determination kit, respectively, to control and P1 platelets upon activation by thrombin (50 and 100 mU/mL). These results are representative of 2 experiments for each patient.

Figure 4: Down-regulation of platelet signaling induced by PAR4-AP.

(A) Aggregation of washed platelets for P1 and P2 was initiated by PAR4-AP (50 μM) during 3 minutes. Aggregation was expressed as the percentage change in light transmission, with the value of the blank (buffer without platelets) set at 100%. Tracings are representative of at least two experiments per patient. (B) Quantification of activated $\alpha\text{IIb}\beta\text{3}$ at the surface of washed platelets was assessed by flow cytometry by binding of the specific mAb PAC1 to control, P1 and P2 platelets upon activation by PAR4-AP (100 to 200 μM) (C) Quantification of P-selectin expression at the surface of washed platelets was assessed by flow cytometry by binding of the specific anti-P selectin antibody to control, P1 and P2 platelets upon activation by PAR4-AP (100 to 200 μM). These results are representative of 2 experiments for each patient. (D) Ca^{2+} mobilization was assessed in unstirred platelets pre-incubated with the cytosolic Ca^{2+} fluorescent probe Oregon green BAPTA-AM after stimulation by PAR4-AP (100 and 200 μM) by flow cytometry in conditions of no external Ca^{2+} (1mM EGTA). (E-F) Phosphorylation of PKC substrates and of Src-Y418 of control and P1 platelets activated by PAR4-AP (0 to 300 μM) was assessed by immunoblotting using an anti-PKC-substrates-p-S and an anti-Src-p-Y418, respectively. These results are representative of 2 experiments. Quantification of Src phosphorylation (Src-p-Y418) was the average of the 2 experiments.

Figure 5: Platelet aggregation and $\alpha\text{IIb}\beta\text{3}$ activation induced by Cvx are altered in both patients.

(A) Aggregation of washed platelets was initiated by increasing concentrations of Cvx (200 to 800 pM) during 3 minutes. Aggregation was expressed as the percentage change in light transmission, with the value of the blank (buffer without platelets) set at 100%. Tracings are representative of at least two experiments per patient. (B) Quantification of activated $\alpha\text{IIb}\beta\text{3}$ at the surface of washed platelets was assessed by flow cytometry by binding of the mAb PAC1 to control and P1 and P2 platelets upon

activation with Cvx (200 to 800 pM). (C) The same experiment was conducted in the presence of apyrase (2U/mL) and indomethacin (10 μ M). These results are representative of 2 experiments for each patient. (D) Adherence and thrombus size were investigated on collagen matrix (50 μ g/mL) in the presence or absence of apyrase (2U/mL) and indomethacin (10 μ M) at high shear rate (1500 s^{-1}) after 3 minutes. Platelet adhesion was expressed as covered surface (%) and thrombus size as total integrated fluorescence intensity (IFI) from 2 experiments carried out in triplicate. Data are presented as the mean \pm SEM and statistical differences were determined using 1-way ANOVA followed by Tukey's multiple comparison test; * $P < 0.05$, ** $P < 0.01$, *** $P < 0.001$.

Figure 6: Downregulation of platelet signaling induced by Cvx.

Washed P1 platelets in suspension were activated by Cvx (200 or 800 pM) for 3 minutes in the absence of stirring and in the presence of apyrase (2U/mL) and indomethacin (10 μ M). (A) Ca^{2+} mobilization was assessed in unstirred platelets pre-incubated with the cytosolic Ca^{2+} fluorescent probe Oregon green BAPTA-AM after stimulation by Cvx (200 to 800 pM) by flow cytometry in conditions of no external Ca^{2+} (1mM EGTA). (B and C) Tyrosine phosphorylation of Akt (p-S473), Syk (p-Y525/526), PLC γ 2 (p-Y1217) and FcR γ was assessed by immunoblotting using an anti-Akt-P, an anti-Syk-P, an anti-PLC γ 2-P and an anti-phosphotyrosine antibodies respectively. These results are representative of 2 experiments. (D) Lyn phosphorylation on Y396 was assessed by immunoblotting using an anti-Lyn-P. Data presented are means \pm SEM of 4 independent experiments (* $P < 0.05$, ** $P < 0.01$, unpaired Student *t* test).

Figure 7: Effect of EPHB2/p.R745C mutation on auto-phosphorylation of EPHB2 and ephrin-induced clustering.

RBL-2H3 cells transfected with WT and mutant EPHB2 constructs were plated on fibrinogen -coverslips for 1 hour. (A) Over-expression and phosphorylation of EPHB2-

WT and EPHB2/p.R745C (EPHB2-Mu) variant after activation with Cvx (1nM) was quantified by western blotting using an anti-EPHB2 and EPHB2-pY594/Y604 antibodies. Results are representative of 3 independent experiments. (B) Clustering of EPHB2 was performed by adding ephrinB1-Fc dimeric ligand to transfected cells stimulated by Cvx (1 nM) and plated on fibrinogen-coated coverslips for 30 min. After various washes, binding of ephrinB1-Fc and level of EPHB2-GFP for the corresponding cell were quantified by fluorescence microscopy (Nikon Eclipse E600). Total integrated fluorescence intensity (IFI) from 3 independent experiments is presented as the mean \pm SEM.

Figure 1

From www.bloodjournal.org by guest on October 14, 2018. For personal use only.

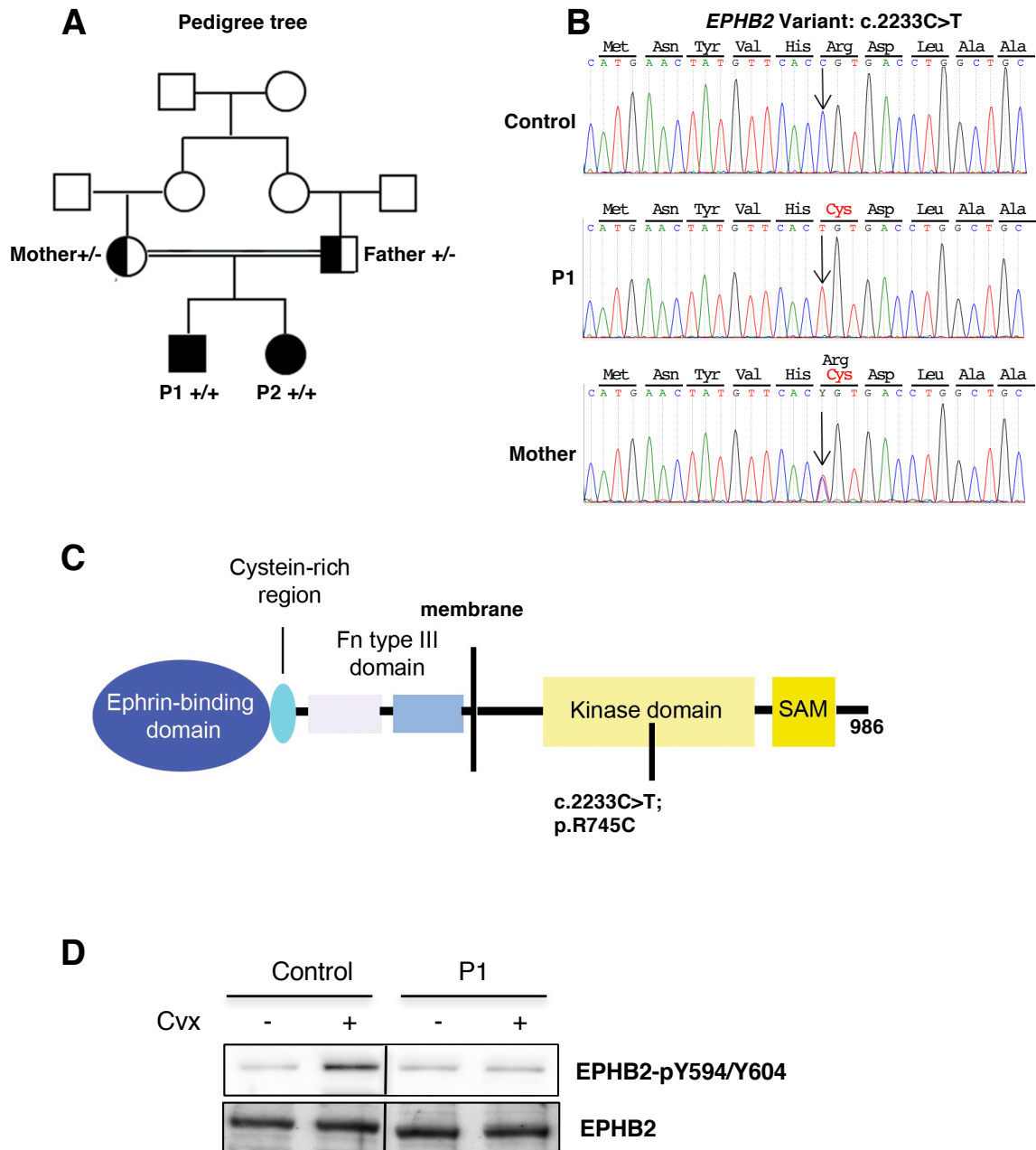
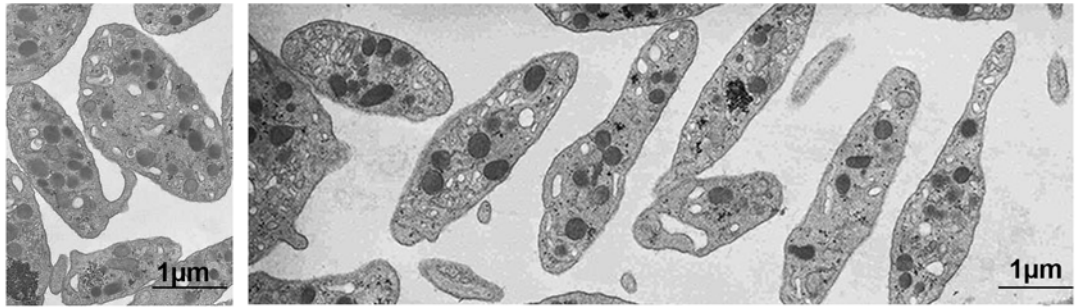


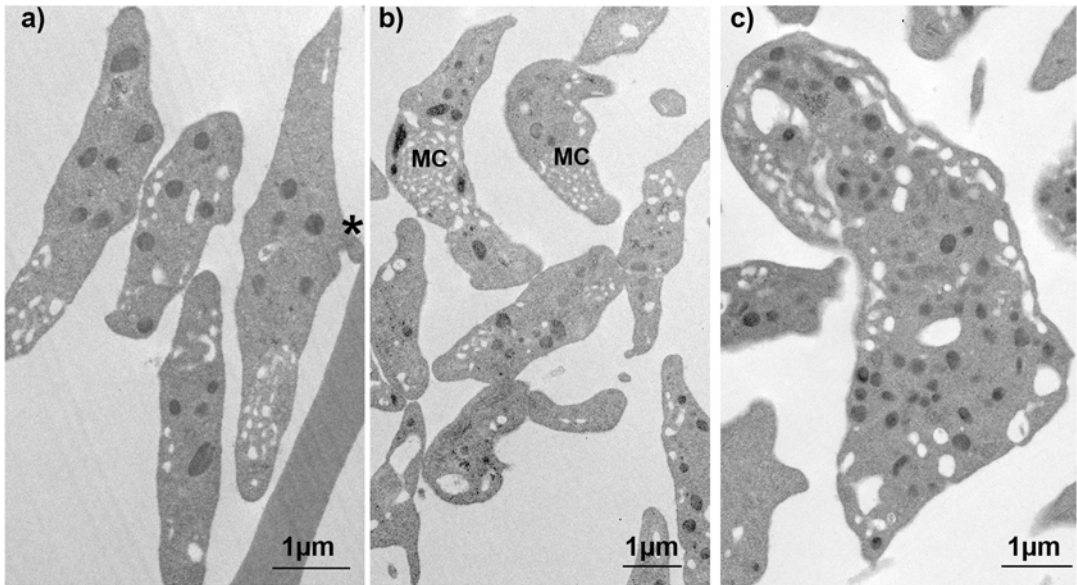
Figure 2

From www.bloodjournal.org by guest on October 14, 2018. For personal use only.

Control



P1
EPHB2
p.R745C



P2
EPHB2
p.R745C

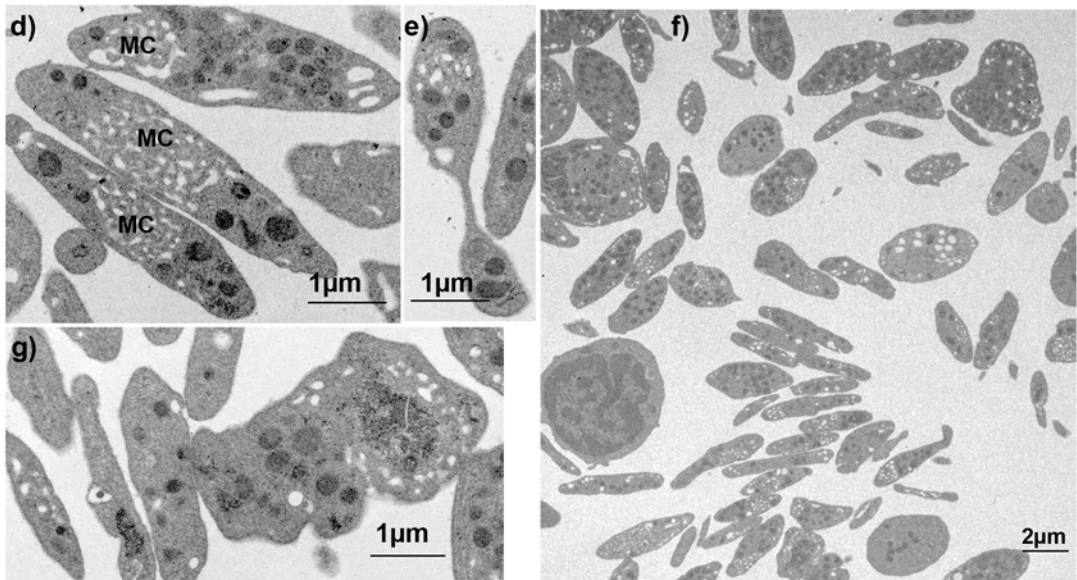


Figure 3

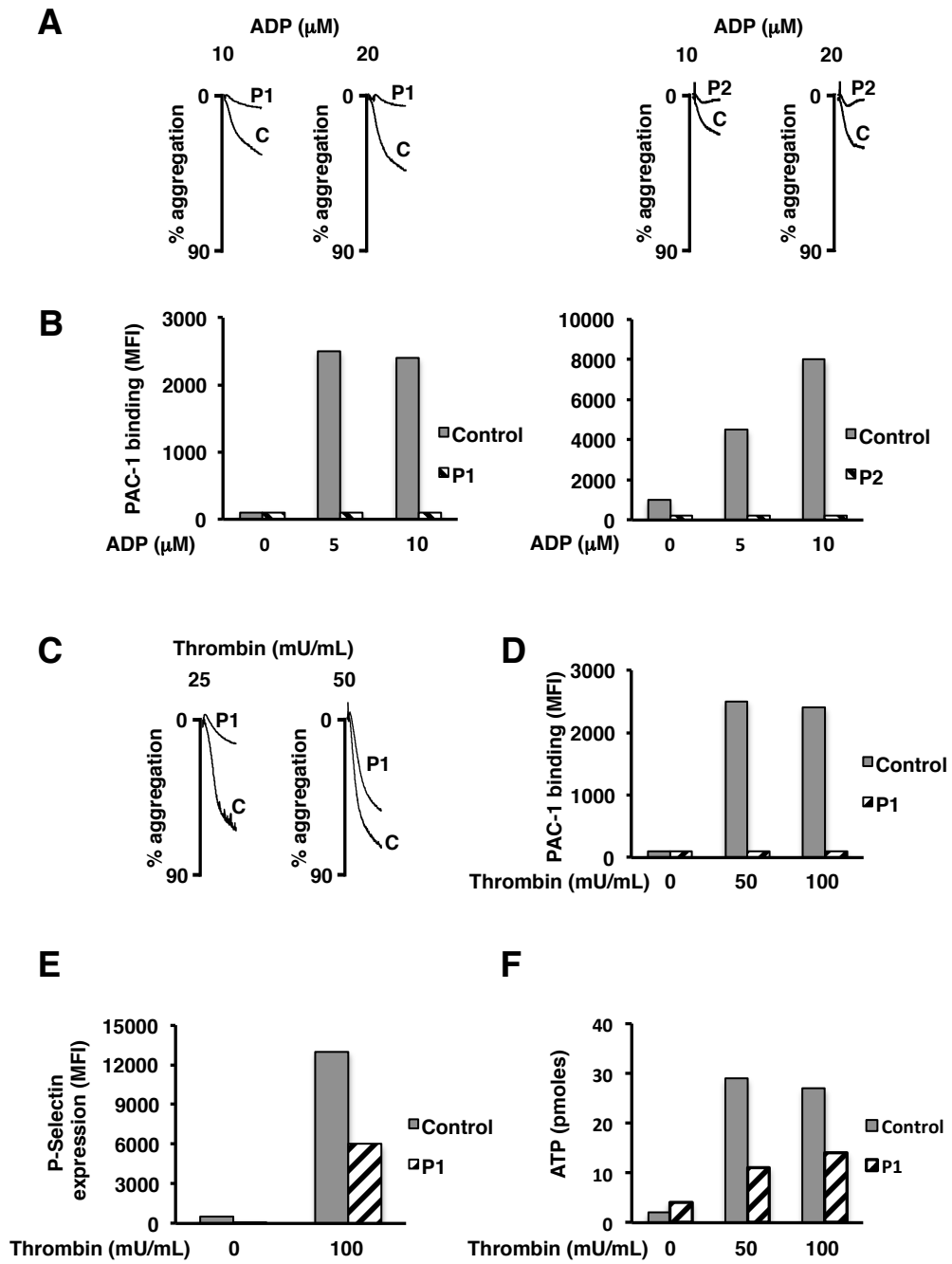


Figure 4

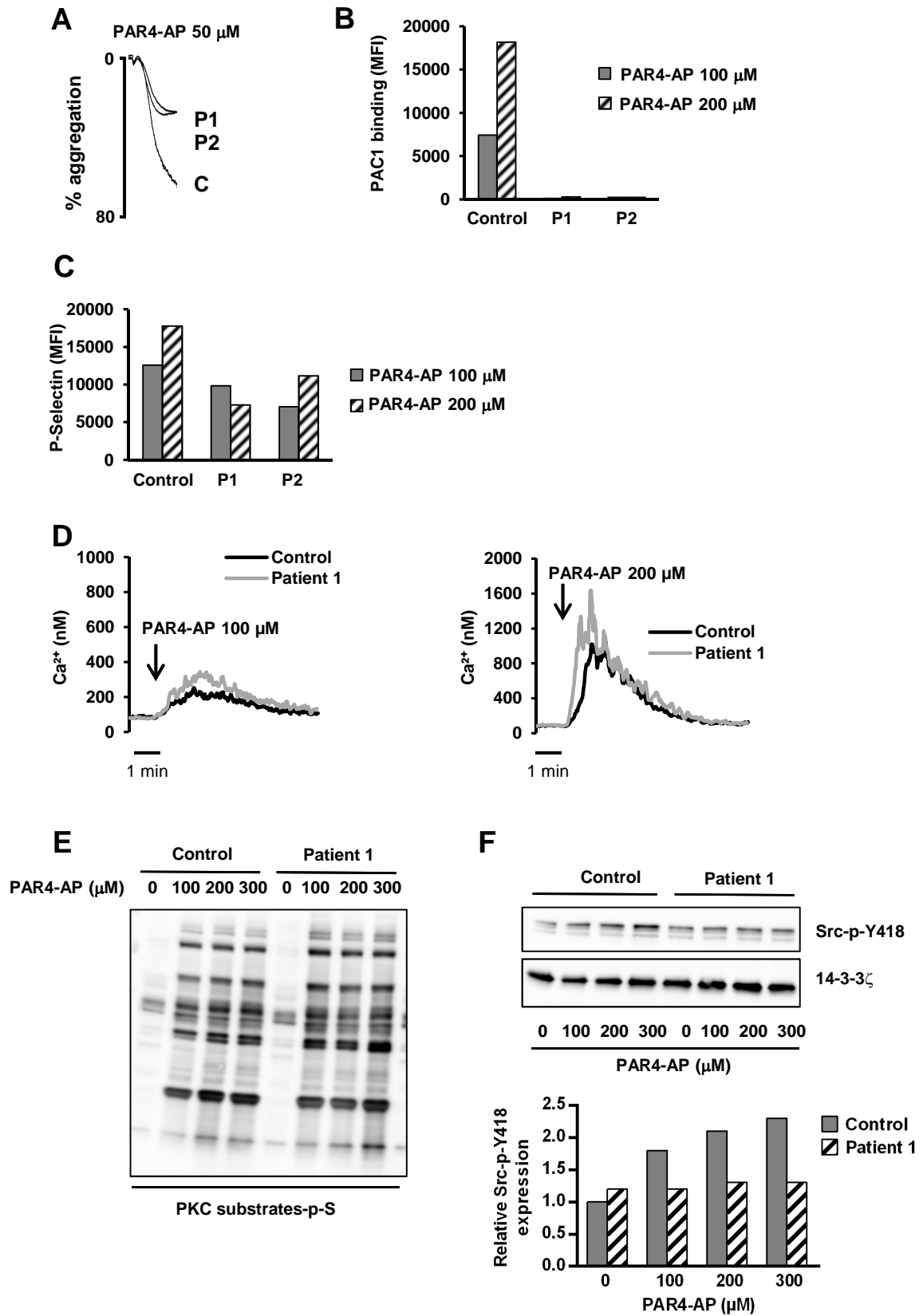


Figure 5

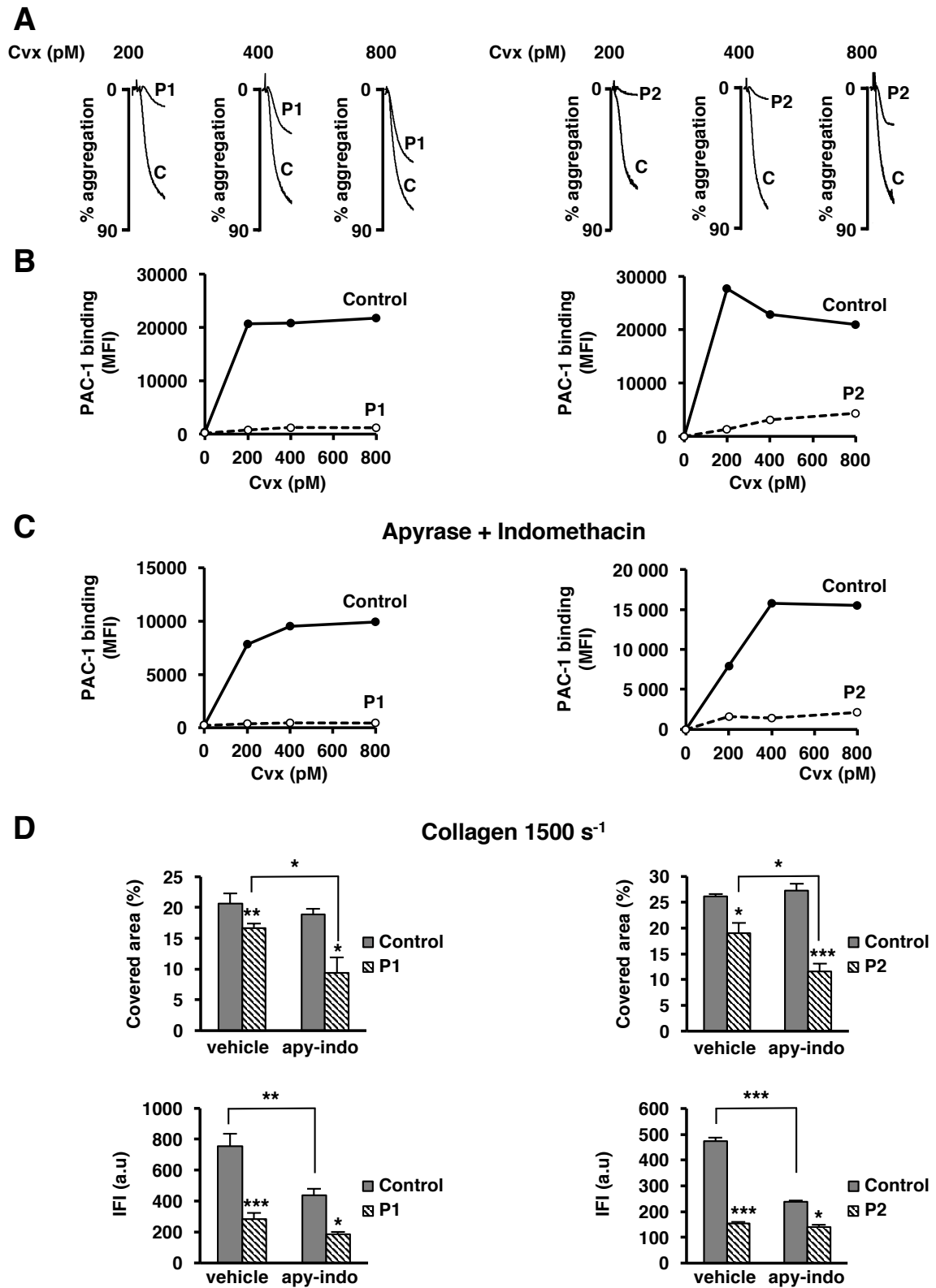


Figure 6

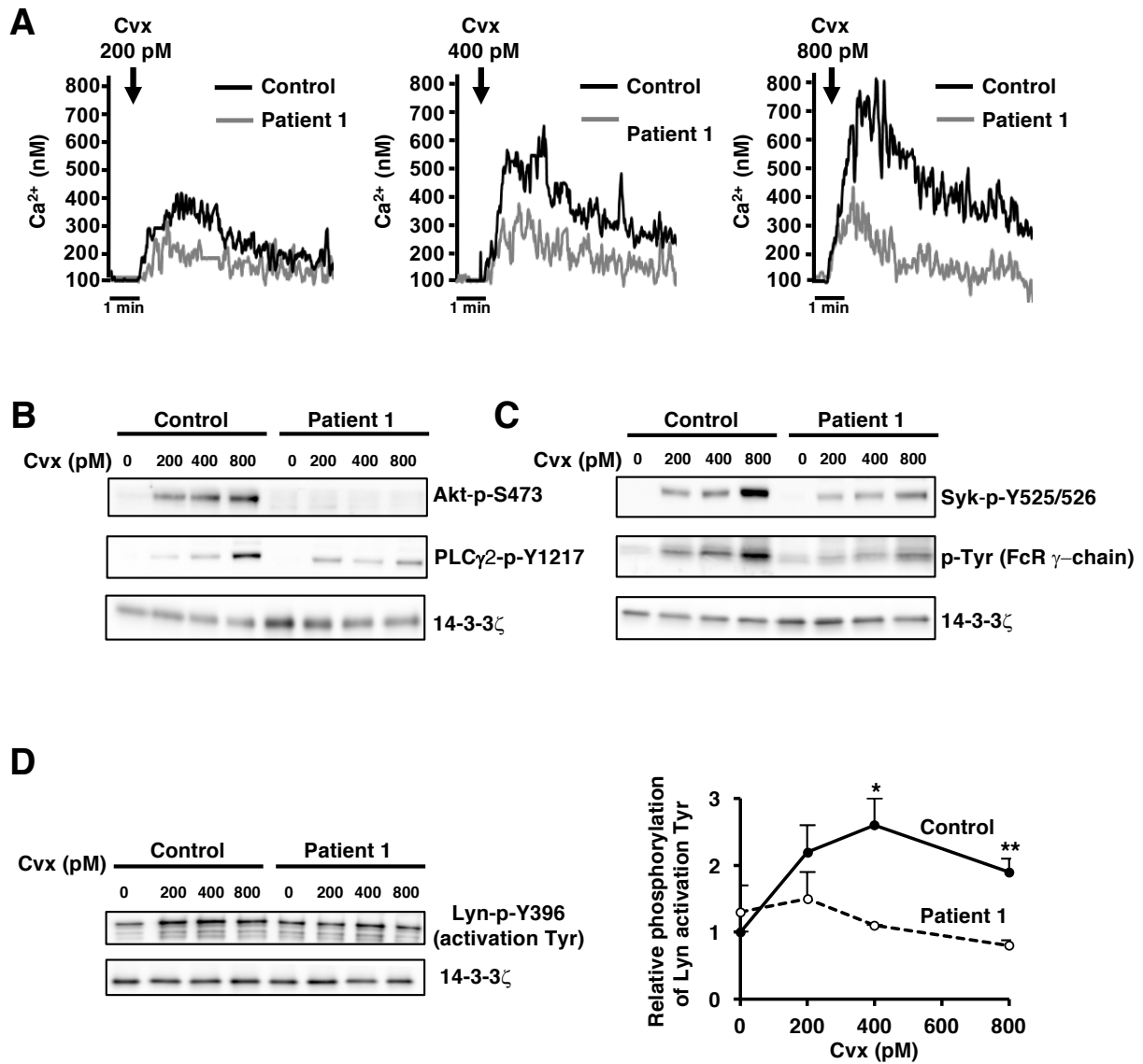
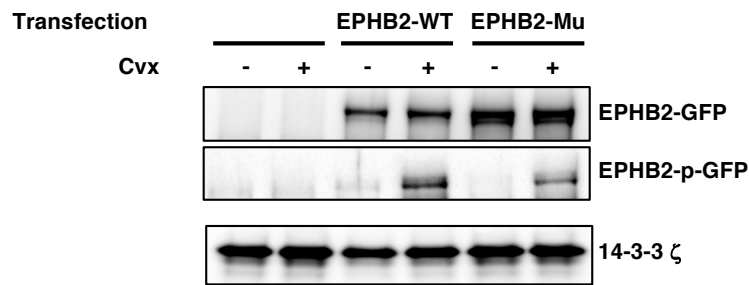


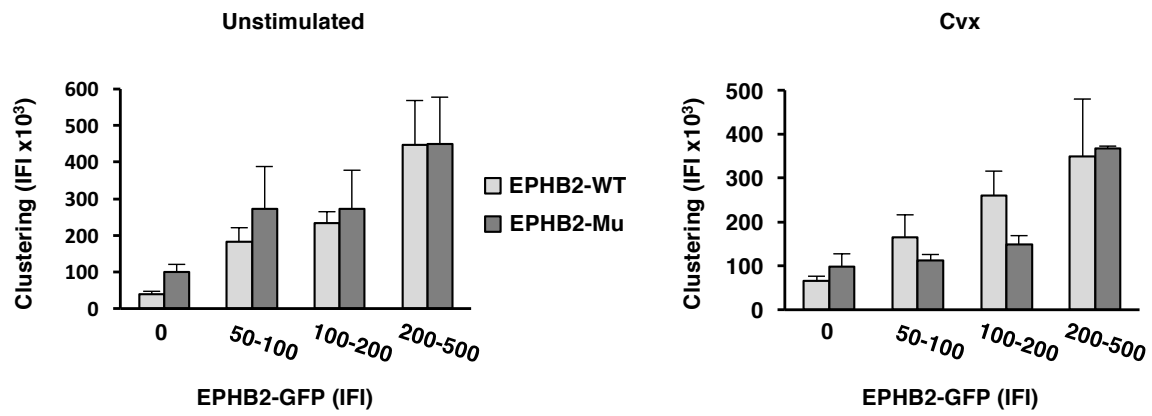
Figure 7

From www.bloodjournal.org by guest on October 14, 2018. For personal use only.

A



B





blood[®]

Prepublished online September 13, 2018;
doi:10.1182/blood-2018-04-845644

A mutation of the human EPHB2 gene leads to a major platelet functional defect

Eliane Berrou, Christelle Soukaseum, Rémi Favier, Frédéric Adam, Ziane Elaib, Alexandre Kauskot, Jean-Claude Bordet, Paola Ballerini, Stephane Loyau, Miao Feng, Karine Dias, Abbas Muheidli, Stephane Girault, Alan T. Nurden, Ernest Turro, Willem H. Ouwehand, Cécile V. Denis, Martine Jandrot-Perrus, Jean-Philippe Rosa, Paquita Nurden and Marijke Bryckaert

Information about reproducing this article in parts or in its entirety may be found online at:
http://www.bloodjournal.org/site/misc/rights.xhtml#repub_requests

Information about ordering reprints may be found online at:
<http://www.bloodjournal.org/site/misc/rights.xhtml#reprints>

Information about subscriptions and ASH membership may be found online at:
<http://www.bloodjournal.org/site/subscriptions/index.xhtml>

Advance online articles have been peer reviewed and accepted for publication but have not yet appeared in the paper journal (edited, typeset versions may be posted when available prior to final publication). Advance online articles are citable and establish publication priority; they are indexed by PubMed from initial publication. Citations to Advance online articles must include digital object identifier (DOIs) and date of initial publication.