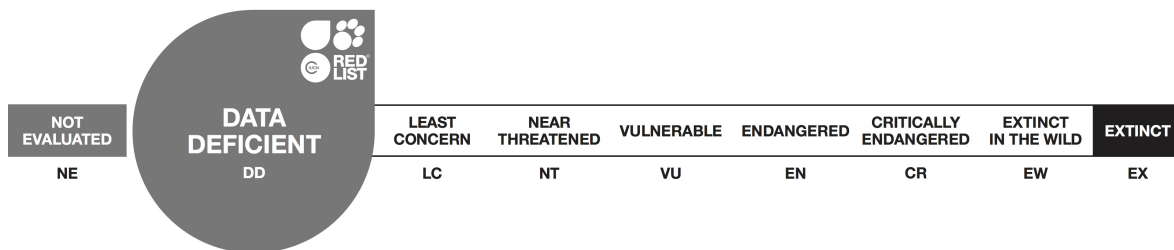


Tor polylepis

Assessment by: Huckstorf, V., Pinder, A. & Harrison, A.



View on www.iucnredlist.org

Citation: Huckstorf, V., Pinder, A. & Harrison, A. 2018. *Tor polylepis*. The IUCN Red List of Threatened Species 2018: e.T188025A126323203. <http://dx.doi.org/10.2305/IUCN.UK.2018-2.RLTS.T188025A126323203.en>

Copyright: © 2018 International Union for Conservation of Nature and Natural Resources

Reproduction of this publication for educational or other non-commercial purposes is authorized without prior written permission from the copyright holder provided the source is fully acknowledged.

Reproduction of this publication for resale, reposting or other commercial purposes is prohibited without prior written permission from the copyright holder. For further details see [Terms of Use](#).

The IUCN Red List of Threatened Species™ is produced and managed by the [IUCN Global Species Programme](#), the [IUCN Species Survival Commission \(SSC\)](#) and [The IUCN Red List Partnership](#). The IUCN Red List Partners are: [Arizona State University](#); [BirdLife International](#); [Botanic Gardens Conservation International](#); [Conservation International](#); [NatureServe](#); [Royal Botanic Gardens, Kew](#); [Sapienza University of Rome](#); [Texas A&M University](#); and [Zoological Society of London](#).

If you see any errors or have any questions or suggestions on what is shown in this document, please provide us with [feedback](#) so that we can correct or extend the information provided.

Taxonomy

Kingdom	Phylum	Class	Order	Family
Animalia	Chordata	Actinopterygii	Cypriniformes	Cyprinidae

Taxon Name: *Tor polylepis* Zhou & Cui, 1996

Taxonomic Notes:

Assessment Information

Red List Category & Criteria: Data Deficient [ver 3.1](#)

Year Published: 2018

Date Assessed: August 5, 2018

Justification:

The species is assessed as Data Deficient, due to a lack of information regarding its range, population status or trends, and direct threats.

Previously Published Red List Assessments

2013 – Data Deficient (DD)

<http://dx.doi.org/10.2305/IUCN.UK.2013-1.RLTS.T188025A1846558.en>

Geographic Range

Range Description:

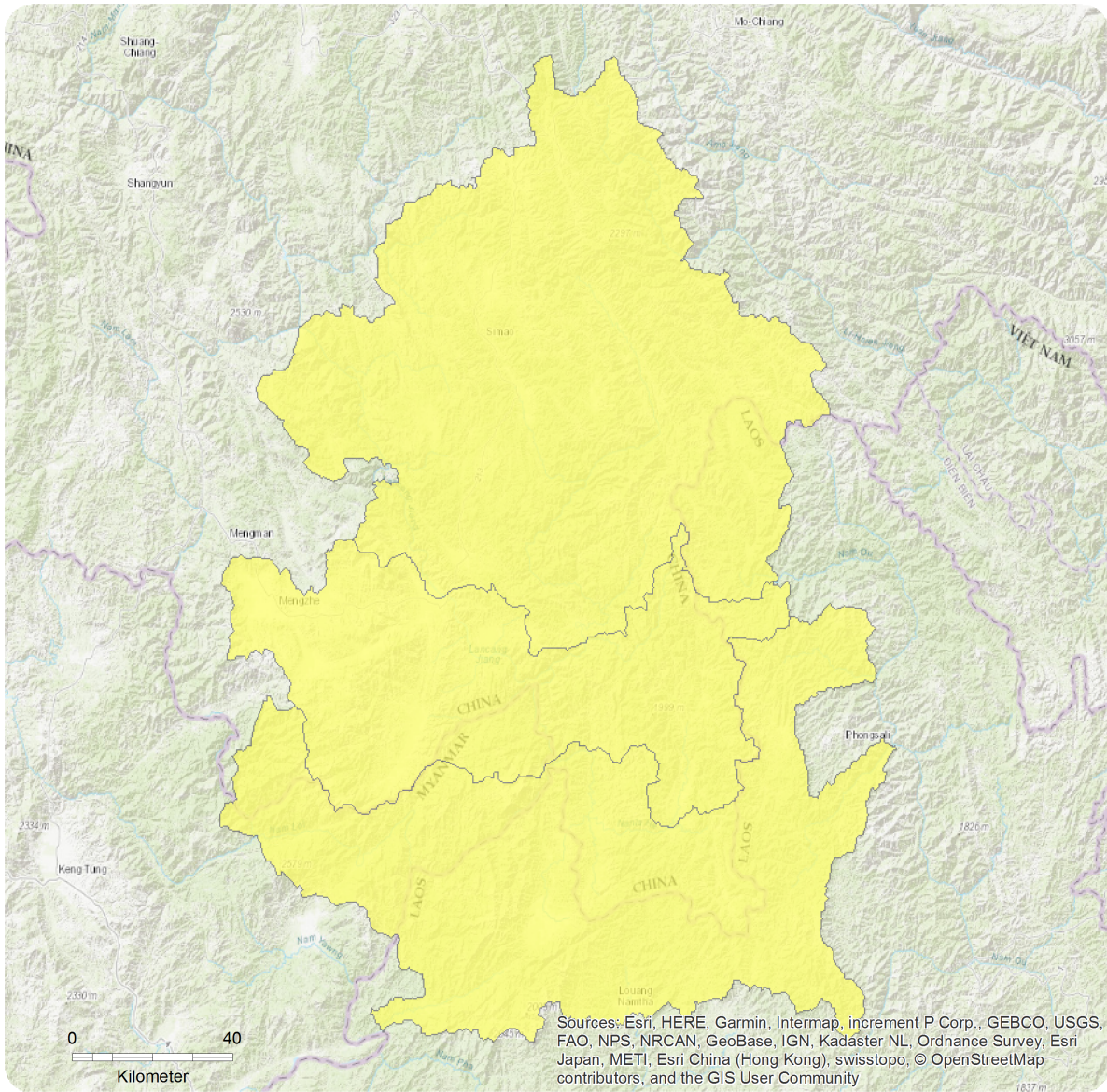
The species is known from a tributary of the upper Mekong River (Lancangjiang) basin in southeastern China (Mengla, Yunnan province) (Zhou and Cui 1996).

Country Occurrence:

Native: China (Yunnan)

Distribution Map

Tor polylepis



Range

Probably Extant (seasonality uncertain)

Compiled by:

IUCN (International Union for Conservation of Nature)



The boundaries and names shown and the designations used on this map do not imply any official endorsement, acceptance or opinion by IUCN.



Population

No information exist on the status or trends in the population of the species.

Current Population Trend: Unknown

Habitat and Ecology (see Appendix for additional information)

The species inhabits rivers with clear water and usually slow current (Zhou and Cui 1996). Other types of habitats including fast flowing hill streams are also likely to be used similar to other species of the genus *Tor*.

Systems: Freshwater

Use and Trade

No species-specific information exists, but *Tor polylepis* could most probably be found in mixed subsistence fisheries.

Threats

The threats to this species are unknown, since there is no information on the biology of this species and therefore the impact of potential threats (especially those of an anthropogenic nature) remains unknown. Being a hillstream species, this species is expected to be vulnerable to anthropogenic habitat disturbance (e.g. siltation caused by deforestation).

Conservation Actions (see Appendix for additional information)

No specific conservation actions are in place. There is a need for research to understand distribution, life history and ecology of the species.

Credits

Assessor(s): Huckstorf, V., Pinder, A. & Harrison, A.

Reviewer(s): Raghavan, R.

Bibliography

IUCN. 2018. The IUCN Red List of Threatened Species. Version 2018-2. Available at: www.iucnredlist.org. (Accessed: 15 November 2018).

Zhou, W. and Cui, G.H. 1996. A review of *Tor* species from the Lancangjiang River (Upper Mekong River), China (Teleostei: Cyprinidae). *Ichthyological Exploration of Freshwaters* 7(2): 131-142.

Citation

Huckstorf, V., Pinder, A. & Harrison, A. 2018. *Tor polylepis*. The IUCN Red List of Threatened Species 2018: e.T188025A126323203. <http://dx.doi.org/10.2305/IUCN.UK.2018-2.RLTS.T188025A126323203.en>

Disclaimer

To make use of this information, please check the [Terms of Use](#).

External Resources

For [Images and External Links to Additional Information](#), please see the [Red List website](#).

Appendix

Habitats

(<http://www.iucnredlist.org/technical-documents/classification-schemes>)

Habitat	Season	Suitability	Major Importance?
5. Wetlands (inland) -> 5.1. Wetlands (inland) - Permanent Rivers/Streams/Creeks (includes waterfalls)	-	Suitable	Yes

Conservation Actions in Place

(<http://www.iucnredlist.org/technical-documents/classification-schemes>)

Conservation Actions in Place
In-Place Research, Monitoring and Planning
Action Recovery plan: No
In-Place Land/Water Protection and Management
Conservation sites identified: No
Occur in at least one PA: Unknown

Conservation Actions Needed

(<http://www.iucnredlist.org/technical-documents/classification-schemes>)

Conservation Actions Needed
1. Land/water protection -> 1.1. Site/area protection
1. Land/water protection -> 1.2. Resource & habitat protection

Research Needed

(<http://www.iucnredlist.org/technical-documents/classification-schemes>)

Research Needed
1. Research -> 1.2. Population size, distribution & trends
1. Research -> 1.3. Life history & ecology
1. Research -> 1.5. Threats
3. Monitoring -> 3.1. Population trends

Additional Data Fields

Population
Population severely fragmented: No
Habitats and Ecology
Continuing decline in area, extent and/or quality of habitat: Unknown
Movement patterns: Altitudinal Migrant

The IUCN Red List Partnership



The IUCN Red List of Threatened Species™ is produced and managed by the [IUCN Global Species Programme](#), the [IUCN Species Survival Commission \(SSC\)](#) and [The IUCN Red List Partnership](#).

The IUCN Red List Partners are: [Arizona State University](#); [BirdLife International](#); [Botanic Gardens Conservation International](#); [Conservation International](#); [NatureServe](#); [Royal Botanic Gardens, Kew](#); [Sapienza University of Rome](#); [Texas A&M University](#); and [Zoological Society of London](#).