

A novel approach to the site-selective dual labelling of a protein *via* chemoselective cysteine modification†

Cite this: *Chem. Sci.*, 2013, **4**, 3455

Ramiz I. Nathani, Paul Moody, Vijay Chudasama, Mark E. B. Smith, Richard J. Fitzmaurice and Stephen Caddick*

Received 13th May 2013
Accepted 17th June 2013

DOI: 10.1039/c3sc51333e

www.rsc.org/chemicalscience

Local protein microenvironment is used to control the outcome of reaction between cysteine residues and 2,5-dibromohexanediamide. The differential reactivity is exploited to introduce two orthogonal reactive handles onto the surface of a double cysteine mutant of superfolder green fluorescent protein in a regioselective manner. Subsequent elaboration with commonly used thiol and alkyne containing reagents affects site-selective protein dual labelling.

The development of accessible chemical methodologies that enable the site-selective labelling of proteins has transformed the study and utility of these complex biomolecules.¹ For example, *N*^ε-acetyl-lysine mimetics can be readily introduced in a defined manner to allow researchers to further investigate this key post-translational modification.² Whereas, in the arena of protein therapeutics, the ability to conjugate a drug, probe or lifetime extension technology to a protein in a controlled manner generates homogeneous biologics with a range of functions.³ The site-selective labelling of proteins is typically achieved by exploiting the unique reactivity of a specific functional group in the protein of interest, *e.g.* thiols,⁴ alkenes,⁵ azides⁶ or alkynes.⁷

Even more challenging than the site-selective generation of singly modified proteins is the homogenous modification of a protein in multiple distinct positions with different probes. Access to site-selectively dual labelled proteins offers opportunities to perform a range of structural studies, employing techniques such as Förster resonance energy transfer to understand protein structure.⁷ Such a methodology would also allow the construction of a range of biologics with dual function, *e.g.* theranostics,⁸ or facilitate the optimal conjugation of both a drug, or imaging probe, with a lifetime extension technology.^{3a}

In order to successfully affect site-selective dual labelling of a protein, two chemoselective, biocompatible processes must be carried out using either native functional groups or those which can be readily introduced in a controlled manner. A number of

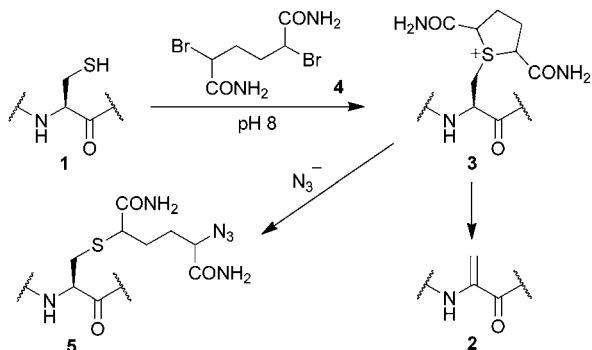
strategies have been developed to address this challenge. However, many are restricted to modification of protein termini, *via* introduction of an N-terminal cysteine and a C-terminal intein,⁹ or sortase labelling,¹⁰ which can limit their utility.¹¹ Methods which allow for the selective dual modification of non-terminal positions are highly desirable as they offer choice as to the disposition of the modifications across the protein surface, however, this creates additional complexity. In cases where the protein can be expressed as two separate soluble fragments, it is possible to label each fragment individually and then carry out a ligation to generate the desired dual labelled protein.¹² Approaches using a cysteine/tetracysteine orthogonal reaction pair have also been employed.¹³ The selective introduction and modification of two non-natural amino acids provides exquisite selectivities.¹⁴ However, such strategies require custom expression strains and tRNAs to generate the protein, which can be time consuming and expensive, and can ultimately result in low expression yields.¹⁵ Alternatively, it might be envisaged that, it should be possible to exploit the differential nucleophilicity of thiols in double cysteine mutant proteins. However, this has brought limited success to date due to the heterogeneity of the modified protein.¹⁶

In this report we describe a fundamentally novel approach to the site-selective dual labelling of a protein at non-terminal amino acid positions. Our approach is based on the positioning of two cysteine mutants within a protein sequence such that the two cysteines are cleanly converted into two distinct products upon treatment with a single chemical reagent. More specifically, in the work described herein, a double cysteine mutant of a protein is initially transformed into a bis-sulfonium using a simple small molecule reagent. The fate of each sulfonium thereafter is controlled by the protein microenvironment, *i.e.* the sulfonium can either persist as a stable entity or eliminate to yield dehydroalanine, thus resulting in site-selective dual functionalisation of a protein based on substrate control. As a

Department of Chemistry, University College London, 20 Gordon Street, London, WC1H 0AJ, UK. E-mail: VPEnterprise@ucl.ac.uk; Fax: +44 (0)20 7679 7463; Tel: +44 (0)20 3108 5071

† Electronic supplementary information (ESI) available: LC-MS, ES-MS, deconvoluted spectra and fluorescence emission spectra for all reactions with proteins described herein. Fluorescence emission spectra of superfolder GFP, all the cysteine mutants and their derivatives are given. See DOI: 10.1039/c3sc51333e





Scheme 1 Reaction modes of sulfonium **3**.

proof of concept, we have applied this rationale to generate a site-selectively dual labelled superfolder green fluorescent protein.

Bioconjugation *via* the selective modification of free cysteine in proteins has received a great deal of attention due to the unique reactivity of its thiol side chain,¹⁷ and the ease with which the residue can be selectively introduced *via* site-directed mutagenesis. For example, Davis has described the modification of cysteine **1** to generate dehydroalanine **2**, which can then be used for bioconjugation in a range of protein substrates, including a single cysteine mutant (S156C) of the protease subtilisin.¹⁸ The formation of dehydroalanine **2** is a consequence of β -elimination of sulfonium **3**, generated from reaction of cysteine thiol **1** with 2,5-dibromohexanediamide **4** at pH 8 (Scheme 1).^{18c} However, we have recently discovered that sulfonium **3**, derived from a single cysteine mutant of superfolder green fluorescent protein (S147C), can be isolated and subsequently used in an alternate bioconjugation strategy, *via* a ring opening reaction with azide, to afford an azide functionalised protein **5** (Scheme 1, see Fig. S7 and S8 in the ESI†).¹⁹ We rationalised that the ability to control the stability of a protein sulfonium, using the protein's microenvironment, could therefore offer a new approach to site-selective protein dual labelling.

Our study began with an attempt to understand the structural factors effecting the formation of dehydroalanine **2** from a cysteine derived sulfonium **3** based on our previous observations and those reported by Davis.^{5,18a-c} As elimination to dehydroalanine **2** inherently requires loss of the α -proton of sulfonium **3** we envisaged that its microenvironment may play an important role in the fate of the sulfonium species. Interestingly, examination of the crystal structures of subtilisin (PDB ID: 1GCL,²⁰ see ESI†) and superfolder GFP (PDB ID: 2B3P,²¹ Fig. 1) did indeed highlight differences in the environments of the α -protons of the residues S156 and S147, respectively. In GFP the structured protein β -barrel appears to shield the α -proton of S147 (green) rendering it inaccessible, solvent accessible surface area = 0.0 Å² (calculated using Naccess),²¹ thus preventing elimination to dehydroalanine **2**. However, in subtilisin the S156 α -proton appears to be solvent accessible (see ESI†), solvent accessible surface area = 4.5 Å²,²² and therefore a single cysteine mutant at this position is prone to elimination to give dehydroalanine **2** (Scheme 1).

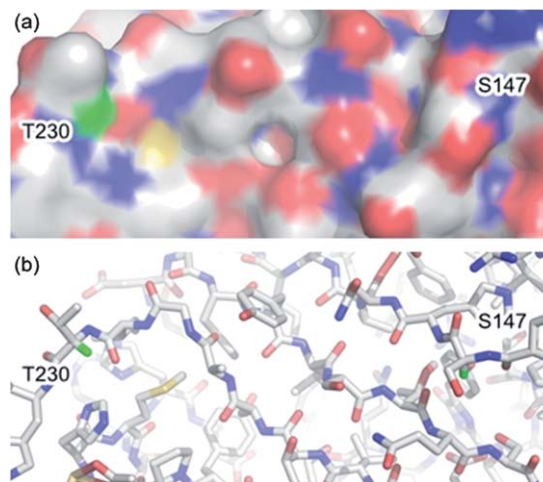
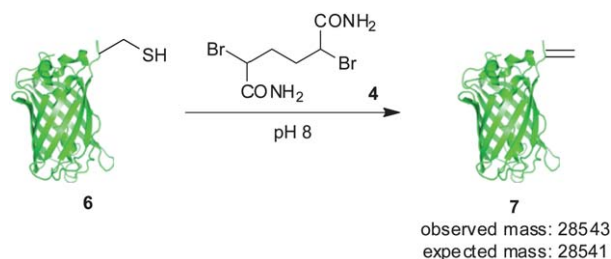


Fig. 1 (a) Surface and (b) stick representation of superfolder green fluorescent protein (PDB ID: 2B3P)²¹ showing α -protons of S147 and T230 (green). Protons were added using PyMOL.²³

Using the same analysis, we identified residue T230 of superfolder GFP (Fig. 1), close to the C-terminus, as having a solvent accessible α -proton (green), solvent accessible surface area = 4.3 Å².^{21,22} Thus, in order to evaluate our hypothesis on the significance of α -proton accessibility on the fate of sulfonium, we expressed and treated a single cysteine mutant at position 230, GFP(T230C, 233 Δ) **6**, with 2,5-dibromohexanediamide (**4**, 50 eq., 2 h, 37 °C). Gratifyingly, this generated GFP(T230Dha, 233 Δ) **7**, as determined by LCMS (observed 28 543, expected 28 541), cleanly, as a single product after 2.5 h at 37 °C (Scheme 2).†

Equipped with these findings we sought to explore the use of controlled sulfonium elimination as an approach for the site-selective dual labelling of a protein. Thus, we generated double mutant GFP(S147C, T230C, 233 Δ) **8**. Initially, to explore if there was any difference in the nucleophilicity of the cysteine thiols at positions 147 and 230, the double mutant was treated with a stoichiometric amount of *N*-methylmaleimide. As a statistical mixture of products was observed (see ESI, Fig. S10†), this confirmed that the cysteine thiols exhibited essentially equivalent nucleophilicity and that any observed chemoselectivity would almost certainly not be due to this factor. Having established this, we proceeded to incubate double mutant GFP(S147C, T230C, 233 Δ) **8** with 2,5-dibromohexanediamide (**4**, 50 eq., 2 h, 37 °C) to see if the results observed on the single



Scheme 2 Conversion of GFP(T230C, 233 Δ) **6** to GFP(T230Dha, 233 Δ) **7**.



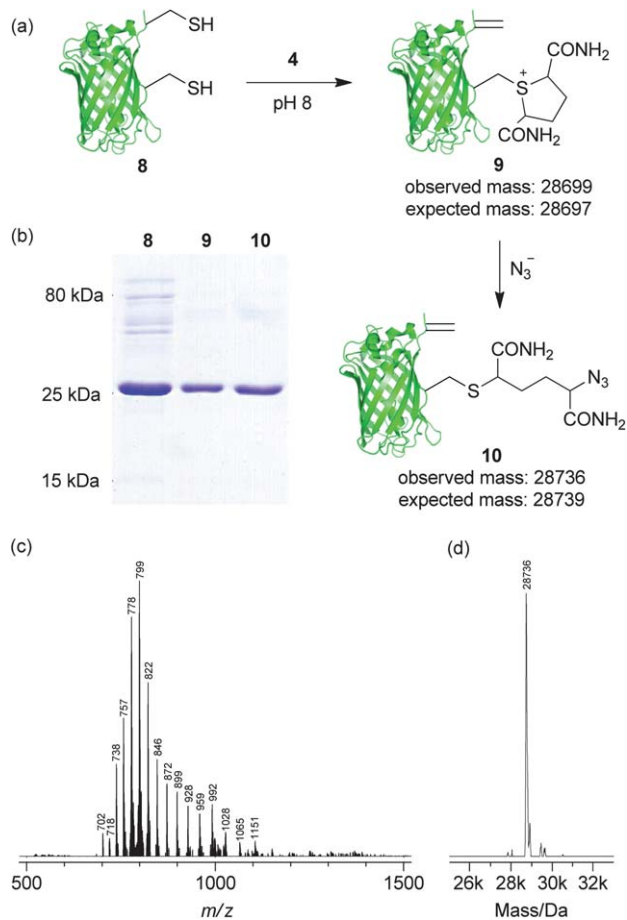


Fig. 2 Regioselective dual modification of double cysteine GFP mutant **8**. (a) Generation of GFP(S147Azide, T230Dha, 233Δ) **10** from GFP(S147C, T230C, 233Δ) **8**. (b) SDS-PAGE characterisation of **8**, **9** and **10** with Coomassie staining. (c) Raw and (d) deconvoluted MS data for GFP(S147Azide, T230Dha, 233Δ) **10**.

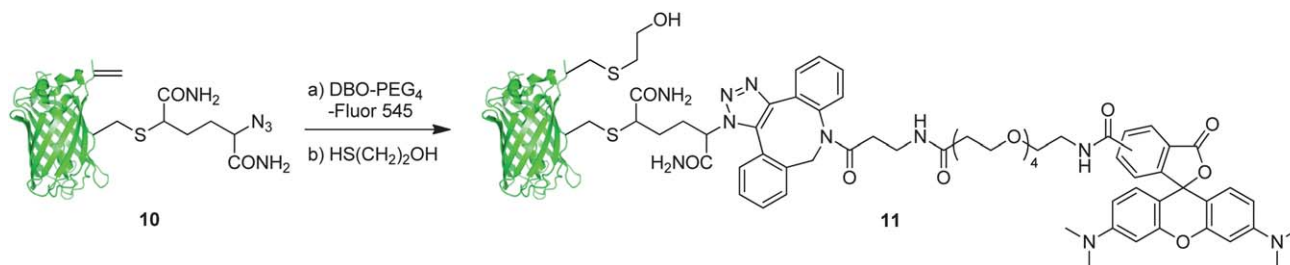
mutants at positions 147 and 230 would be translated. To our delight, we observed formation of dual modified GFP(S147Sulf, T230Dha, 233Δ) **9** as the sole identifiable product, as determined by SDS-PAGE and LCMS (observed 28 699, expected 28 697, Fig. 2). Furthermore, direct treatment of GFP(S147Sulf, T230Dha, 233Δ) **9** with azide (NaN_3 , >1000 eq., 37 °C, 2 h) resulted in the addition of a single azide to give GFP(S147Azide, T230Dha, 233Δ) **10**, a site-selectively dual functionalised protein bearing orthogonal reactive handles, as determined by SDS-PAGE and LCMS (observed 28 736, expected 28 739, Fig. 2).

The regioselectivity of the reaction of GFP(S147Sulf, T230Dha, 233Δ) **9** with azide was ascertained by incubation of a fresh sample of GFP(T230Dha, 233Δ) **7** with sodium azide (>1000 eq., 37 °C, 4 h). Cross reaction of azide with dehydroalanine in **7** was not observed, confirming selective ring opening of position 147 sulfonium in GFP(S147Sulf, T230Dha, 233Δ) **9** generating GFP(S147Azide, T230Dha, 233Δ) **10** (see ESI, Fig. S12†).

We then sought to demonstrate the utility of azide/dehydroalanine constructs through elaboration of the protein scaffold *via* reaction with these two orthogonal groups (Scheme 3). Thus, we treated GFP(S147Azide, T230Dha, 233Δ) **10** with commercially available strained alkyne dye, dibenzylcyclooctyne PEG₄-Fluor 545 (Jena Biosciences), to affect the formation of the expected dye-GFP conjugate (observed 29 679, expected 29 675) through a chemoselective strain-promoted alkyne-azide cycloaddition. It has previously been demonstrated that protein dehydroalanines undergo facile conjugation with free thiols, albeit not in a stereodefined manner, allowing introduction of various thiolated probes.¹⁹ Thus, subsequent addition of a simple thiol, 2-mercaptoethanol, to the intermediate Dye-GFP conjugate gave dual labelled GFP **11** (observed 29 755, expected 29 753) decorated with a dye, tetramethylrhodamine, and a thiol in a regioselective manner.†

Conclusions

A facile and generally accessible methodology for the site-selective dual modification of proteins is a hitherto unmet need and offers a wide range of possibilities for development of new approaches to chemical biology and for therapeutic development. Although other techniques are available to affect the site-selective dual labelling of a protein, they tend to be limited and each suffer from a number of drawbacks. The strategy for chemoselective protein dual labelling described herein enables dual functionalisation using orthogonal reactivity of natural amino acid side chains under mild conditions, underpinned by two sequential chemoselective reactions. We are hopeful that this strategy can be applied to any pair of cysteine residues wherein one residue has an accessible α -proton, and thus readily forms dehydroalanine, and the α -proton of the second residue is sufficiently shielded, and thus persists as a sulfonium that can undergo chemoselective ring opening by the addition of azide. Moreover, the derived azide/dehydroalanine proteins can be further modified in a chemoselective manner using well



Scheme 3 Elaboration of GFP(S147Azide, T230Dha, 233Δ) **10**.



established methods and commercial reagents to affect site-selective dual labelling in a facile manner.

Acknowledgements

The authors gratefully acknowledge the EPSRC, BBSRC, Wellcome Trust, UCL, UCLB and GSK for support of our programme.

Notes and references

- (a) E. M. Sletten and C. R. Bertozzi, *Angew. Chem., Int. Ed.*, 2009, **48**, 6974–6998; (b) C. T. Walsh, S. Garneau-Tsodikova and G. J. Gatto, *Angew. Chem., Int. Ed.*, 2005, **44**, 7342–7372; (c) D. F. Qi, C. M. Tann, D. Haring and M. D. Distefano, *Chem. Rev.*, 2001, **101**, 3081–3111; (d) L. M. Artner, L. Merkel, N. Bohlke, F. Beceren-Braun, C. Weise, J. Dervede, N. Budisa and C. P. R. Hackenberger, *Chem. Commun.*, 2012, **48**, 522–524.
- F. Li, A. Allahverdi, R. Yang, G. B. J. Lua, X. Zhang, Y. Cao, N. Korolev, L. Nordenskiöld and C.-F. Liu, *Angew. Chem., Int. Ed.*, 2011, **50**, 9611–9614.
- (a) M. S. S. Palanki, A. Bhat, B. Bolanos, F. Brunel, J. Del Rosario, D. Dettling, M. Horn, R. Lappe, R. Preston, A. Sievers, N. Stankovic, G. Woodnut and G. Chen, *Bioorg. Med. Chem. Lett.*, 2013, **23**, 402–406; (b) L. Fass, *Mol. Oncol.*, 2008, **2**, 115–152; (c) S. C. Alley, N. M. Okeley and P. D. Senter, *Curr. Opin. Chem. Biol.*, 2010, **14**, 529–537.
- (a) D. P. Nguyen, T. Elliott, M. Holt, T. W. Muir and J. W. Chin, *J. Am. Chem. Soc.*, 2011, **133**, 11418–11421; (b) P. Moody, M. E. B. Smith, C. P. Ryan, V. Chudasama, J. R. Baker, J. Molloy and S. Caddick, *ChemBioChem*, 2012, **13**, 39–41.
- K. Lang, L. Davis, J. Torres-Kolbus, C. Chou, A. Deiters and J. W. Chin, *Nat. Chem.*, 2012, **4**, 298–304.
- K. L. Kiick, E. Saxon, D. A. Tirrell and C. R. Bertozzi, *Proc. Natl. Acad. Sci. U. S. A.*, 2002, **99**, 19–24.
- D. P. Nguyen, H. Lusic, H. Neumann, P. B. Kapadnis, A. Deiters and J. W. Chin, *J. Am. Chem. Soc.*, 2009, **131**, 8720–8721.
- S. S. Kelkar and T. M. Reineke, *Bioconjugate Chem.*, 2011, **22**, 1879–1903.
- L. Yi, H. Sun, A. Itzen, G. Triola, H. Waldmann, R. S. Goody and Y.-W. Wu, *Angew. Chem., Int. Ed.*, 2011, **50**, 8287–8290.
- J. M. Antos, G.-L. Chew, C. P. Guimaraes, N. C. Yoder, G. M. Grotenbreg, M. W.-L. Popp and H. L. Ploegh, *J. Am. Chem. Soc.*, 2009, **131**, 10800–10801.
- N. Stephanopoulos and M. B. Francis, *Nat. Chem. Biol.*, 2011, **7**, 876–884.
- J.-Y. Yang and W. Y. Yang, *J. Am. Chem. Soc.*, 2009, **131**, 11644–11645.
- S. Granier, S. Kim, A. M. Shafer, V. R. P. Ratnala, J. J. Fung, R. N. Zare and B. Kobilka, *J. Biol. Chem.*, 2007, **282**, 13895–13905.
- (a) H. Neumann, K. Wang, L. Davis, M. Garcia-Alai and J. W. Chin, *Nature*, 2010, **464**, 441–444; (b) B. Wu, Z. Wang, Y. Huang and W. R. Liu, *ChemBioChem*, 2012, **13**, 1405–1408; (c) E. M. Brustad, E. A. Lemke, P. G. Schultz and A. A. Deniz, *J. Am. Chem. Soc.*, 2008, **130**, 17664–17665.
- S. Nehring, N. Budisa and B. Wiltschi, *PLoS One*, 2012, **7**, e31992.
- Y. Santoso, C. M. Joyce, O. Potapova, L. Le Reste, J. Hohlbein, J. P. Torella, N. D. F. Grindley and A. N. Kapanidis, *Proc. Natl. Acad. Sci. U. S. A.*, 2010, **107**, 715–720.
- (a) M. E. B. Smith, F. F. Schumacher, C. P. Ryan, L. M. Tedaldi, D. Papaioannou, G. Waksman, S. Caddick and J. R. Baker, *J. Am. Chem. Soc.*, 2010, **132**, 1960–1965; (b) Y. Kim, S. O. Ho, N. R. Gassman, Y. Korlann, E. V. Landorf, F. R. Collart and S. Weiss, *Bioconjugate Chem.*, 2008, **19**, 786–791; (c) K. L. Holmes and L. M. Lantz, *Methods in Cell Biology*, Academic Press, 2001, vol. 63, Part A, pp. 185–204; (d) Q.-F. Li, Y. Yang, A. Maleckis, G. Otting and X.-C. Su, *Chem. Commun.*, 2012, **48**, 2704–2706; (e) V. Chudasama, M. E. B. Smith, F. F. Schumacher, D. Papaioannou, G. Waksman, J. R. Baker and S. Caddick, *Chem. Commun.*, 2011, **47**, 8781–8783.
- (a) G. J. L. Bernardes, J. M. Chalker, J. C. Errey and B. G. Davis, *J. Am. Chem. Soc.*, 2008, **130**, 5052–5053; (b) G. J. L. Bernardes, E. J. Grayson, S. Thompson, J. M. Chalker, J. C. Errey, F. El Oualid, T. D. W. Claridge and B. G. Davis, *Angew. Chem., Int. Ed.*, 2008, **47**, 2244–2247; (c) J. M. Chalker, S. B. Gunnoo, O. Boutureira, S. C. Gerstberger, M. Fernández-González, G. J. L. Bernardes, L. Griffin, H. Hailu, C. J. Schofield and B. G. Davis, *Chem. Sci.*, 2011, **2**, 1666–1676; (d) J. M. Chalker, L. Lercher, N. R. Rose, C. J. Schofield and B. G. Davis, *Angew. Chem., Int. Ed.*, 2012, **51**, 1835–1839.
- R. Nathani, P. Moody, M. E. B. Smith, R. J. Fitzmaurice and S. Caddick, *ChemBioChem*, 2012, **13**, 1283–1285.
- P. Kuhn, M. Knapp, S. M. Soltis, G. Ganshaw, M. Thoene and R. Bott, *Biochemistry*, 1998, **37**, 13446–13452.
- J.-D. Pedelacq, S. Cabantous, T. Tran, T. C. Terwilliger and G. S. Waldo, *Nat. Biotechnol.*, 2006, **24**, 79–88.
- S. Hubbard and J. Thornton, Naccess, 1993, University of Manchester, Manchester, U.K, based on B. Lee, F. M. Richards, *J. Mol. Biol.*, 1971, **55**, 379–400.
- Images generated using PyMOL Molecular Graphics System, Version 1.2r3pre, Schrödinger, LLC.

