

University of Alaska Southeast

WHALE SONG

January 16 - 29, 2013

The Official Student Newspaper of UAS



**Spring 2013:
Reorient yourself**
Page 3

**UAS Eats: Start off the
New Year right**
Page 3

**Campus events: What to do
and where to be this month**
Pages 5 - 7



Cover photo by Kinsey Hess

— UAS Answers — Everybody's got one ...

If you could go back in time and change any historical event, what would you do?

TABLE OF CONTENTS

- 2 UAS Answers
- 3 Reorient Yourself!
- 3 UAS Eats
- 4 UAS in Brief
- 5-7 Calendar & Comics

WHALESONG STAFF

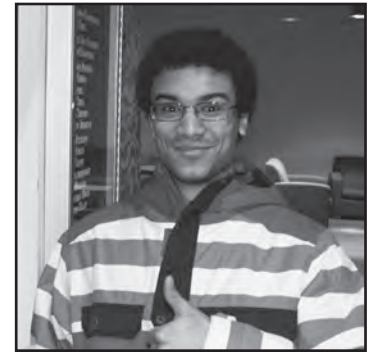
Kinsey Hess, Staff Writer
Lori Klein, Faculty Advisor
Henry Masters, Staff Photographer
Justin Parish, Staff Writer
Richard Radford, Managing Editor
Chrystal Randolph, Advertising Manager

Have anything you want to share with the Whalesong and its community?
 Interested in advertising? Contact us via email at whalesong@uas.alaska.edu.



"I would tell Linkin Park to not change their style. Because now they just kinda suck."

— Luke Gunkel



"I would go back in time and change my answer to this question."

— Andre Bunton



"I would persuade Hitler to go to art school."

— Joe Lewis



"I would change the formation of H.A.R.P."

— Daniel Matthews



"If I could change any historical event it would be the election of Obama."

— Jim Whitey



"Christopher Columbus. I would go back in time kick his butt. I'd tell him, 'Take your diseases and go back to Spain.'"

— Maria Rangel and Pamela Johnson

From the provost: reorient yourself

UAS RELEASE

For the UAS Whalesong

Welcome back to Spring Semester 2013. The beginning of a new semester provides us with an opportunity to set high expectations for students, state clearly what we expect them to learn, and provide a pathway giving them every opportunity for success.

Nominations Open — 2013 UAS Faculty Excellence Awards; Deadline March 1, 2013

Nominations are now open for recognizing faculty excellence at all three of our UAS campuses. The deadline is March 1, 2013. This year, we will recognize excellence in five categories: Teaching, Service, Research, Adjunct Instruction, and Advising. A \$1,000 award is provided to each recipient. Nominations may be made by any member of the UAS community — faculty, staff, students, community members. More details to follow.

Faculty Office Hours — A Contributor

To Student Success

Faculty are expected to establish and post regular office hours as one contributor to student success. Please identify office hours, post them, and also let your dean/campus director know when they are scheduled.

'Edible' Art Of Place Begins January 25 — Juneau Auke Lake Campus

Juneau Campus will once again be hosting Art of Place through the leadership of Assistant Professor Ernestine Hayes. This year's theme is Edible Art of Place, with presentations about indigenous foods and food preparation. The first session is Friday, Jan. 25 from 10 a.m. to noon in the Glacier View Room, Auke Lake Campus.

Provost's Ad Hoc Work Group on Student Success & Remediation

This ad hoc work group continues to focus on action steps for improving remediation efforts at UAS, supporting innovation by faculty, and strengthening learning center services. The committee has repre-

sentation from all three campuses and is expected to develop recommendations for the coming year.

School Of Management Suspends Admission To Associate Of Business Degree

In keeping with a recent Program Review, faculty in the School of Management have requested suspension of the Associate of Business (A.B.) degree. This decision streamlines options available in SOM and makes better use of available resources. The modest number of students currently in the degree program will be able to complete their program.

NWCCU Accreditation Preparations Continue, but No Site Visit to UAS

As UAS continues to prepare its Year Three accreditation report for the Northwest Commission on Colleges and Universities, the NWCCU recently announced that it will not visit UAS in October 2013 as previously planned. Instead, the Commission will rely on the prepared Year Three report and an 'off-site' telephonic

visit with university leadership. This action makes careful preparation of the Year Three report all the more important. Vice Provost Carol Hedlin is taking the lead in this effort. UAS has contracted with Dr. Mary Lou Madden of Madden and Associates to assist with writing and editing the report.

Governor To Visit Auke Lake Campus For Mining Occupations Class Kickoff

Governor Sean Parnell will visit the Auke Lake Campus on January 22 to assist UAS Center for Mine Training Director Mike Bell with the kickoff of a new dual enrollment course on mining occupations in Alaska.

Planned Faculty Roundtable On Strategies For Multicultural Classrooms

Faculty members Sarah Ray and Jen Vernon are making plans for a discussion about strategies for use in multicultural classrooms, focused around a national online presentation on this topic. For details, contact Sarah Ray.

UAS Eats: Chia Seeds — A 'superfood'

BY TRACI L. TAYLOR

For the UAS Whalesong

Last spring I took a communications class and a classmate did a speech about superfoods. Superfoods, according to the oratory, are foods high in essential nutrients and antioxidants. In the discussion he introduced me to chia seeds. Chia seeds are amazing little seeds in the mint family that have more antioxidants in them than blueberries! I did some online research, and according to Dr. Weil, chia seeds provide fiber, omega-3 fatty acids, calcium, phosphorus, magnesium, iron, zinc, and other important nutrients. I've been experimenting with them. Chia can be added to salads, breads, cookies, drinks, cereals, etc. I tried them for the first time during that speech. My classmate sprinkled some in a glass of dark chocolate almond milk. I liked

it. Since they absorb moisture, chia take on some of the flavor of whatever liquid they are put in. If you make a pudding from them, it has a Tapioca-like texture. Most recently I've been adding about 1/8 of a cup to juices and Vitamin Water. Remember to let them sit for 15-20 minutes to absorb moisture. For those of you who remember the Orbitz drink, it is similar to that. If you don't know Orbitz, think of bubble tea with smaller bubbles. Chia seeds have become a staple in my house. They store for a long time and are great for helping prevent colds. They used to be available at Fred Meyer, but I have not seen them there for a while. Now I can only find them at Rainbow Foods in downtown Juneau. If you want to get a head start on the semester and help keep your immune system strong, I encourage you to give these versatile little seeds a chance.

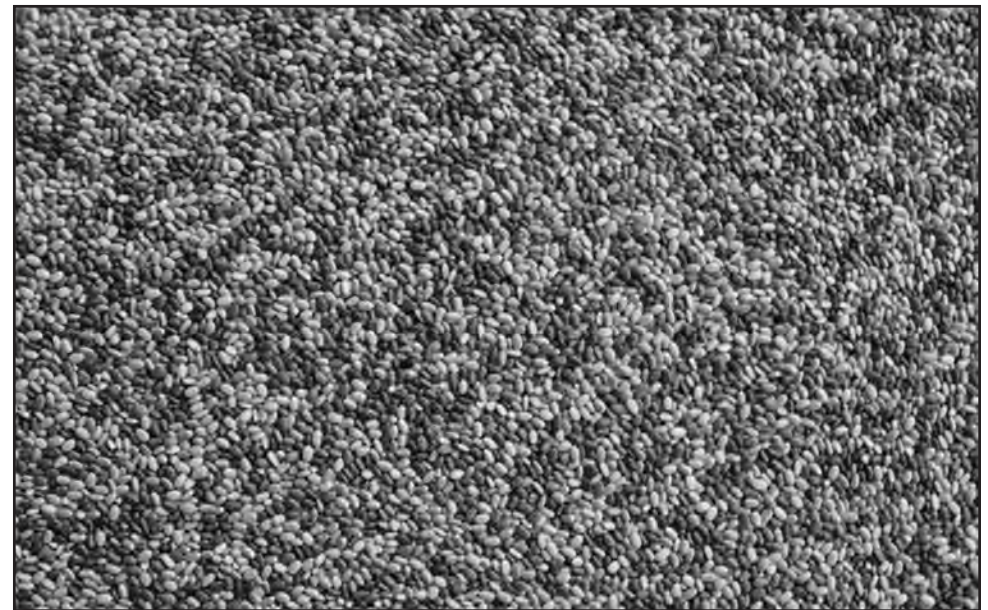


photo by Robert Lynch

UAS in Brief

Schulte Named Fellow in Society for Applied Anthropology

Ketchikan Interim Campus Director and Professor of Anthropology/Sociology Priscilla Schulte, Ph.D., has been promoted to the status of Fellow in the Society of Applied Anthropology. Schulte was notified by a letter from the Board of Directors in late December, 2012. "Your election to Fellow status was based on your experience and seniority," wrote board president Merrill Eisenberg. "You can be a source of expert advice and counsel for the Officers of the Board."

The Society was founded in 1941 with the mission to apply the social sciences to contemporary problems by a group that included pioneer anthropologist Margaret Mead.

Dr. Schulte specializes in multicultural education, Alaska Native cultures, sociocultural change, and archaeology of southeast Alaska.

— UAS Release

Accounting students receive AKCPA's Paul Hagelbarger Scholarship

The Alaska Society of CPAs (AKCPA), a statewide professional organization, announces awards of the Paul Hagelbarger Scholarship to UAS accounting students Heather Leggett and Emma Zeisel. The Paul Hagelbarger Memorial Fund, established in 1964, honors one of its members and first elected President of the AKCPA, Paul Hagelbarger. The primary objective of the Fund is to provide financial support to promote accounting education for the practice of public accounting in the State of Alaska. The School of Management congratulates Leggett and Zeisel for this achievement and wishes them continued success.

— UAS Release

THE BANFF CENTRE PRESENTS
**BANFF 2012
2013
MOUNTAIN
FILM FESTIVAL
WORLD TOUR**

THE WORLD'S BEST MOUNTAIN FILMS

NATIONAL GEOGRAPHIC THE NORTH FACE
deuter OR OUTDOOR PRIMALOFT MSR
Black Diamond DOLBY
PETZL Expeditions THERMAREST Lake Louise

The Banff Centre
inspiring creativity
www.banffmountainfestival.ca

Major Image: photography: Patrizia Lorenz, Sautin, Apis, Slovenia. © Mickaël Prigent

March 4 & 5th, 2013 @ Centennial Hall

Doors open at 6:30 PM—Shows start at 7PM

Student Prices: \$10 one night or \$15 for both nights

Public Prices: \$15 one night or \$25 for both nights

Sponsored by USUAS-JC Student Government

OFF CAMPUS

THURSDAY, JAN. 17

Movie: "Hitchcock," 7 p.m., Gold Town Nickelodeon. Director Sacha Gervasi adapts Stephen Rebello's book *Alfred Hitchcock and the Making of Psycho* to explore the relationship between the legendary British director (Anthony Hopkins) and his wife Alma Reville (Helen Mirren), who played a crucial behind-the-scenes role in the making of her husband's terrifying 1960 classic *Psycho*. Scarlett Johansson co-stars as Janet Leigh and James D'Arcy portrays Anthony Perkins. Contact: www.goldtownnick.com.
Stage: "Betrayal," 7:30 p.m., Perseverance Theatre. Pay-as-you-can performance. Contact: www.perseverancetheatre.org.

FRIDAY, JAN. 18

Movie: Lunafest : Short Films By, For, About Women, 6-8 p.m., Centennial Hall. 6 p.m. silent auction, 6:30 p.m. showtime. Tickets: \$10 Advance/\$12 At the Door. Ticket info: juneauchoice.com. For more information, lunafest.org.
Woosh Kinaadeiyi Poetry Slam & Open Mic, 6:30 – 8:30 p.m., Thunder Mountain High School.
Movie: "Hitchcock," 7 p.m. & 9 p.m., Gold Town Nickelodeon. Contact: www.goldtownnick.com.

Stage: "Betrayal," 7:30 p.m., Perseverance Theatre. Robert and Jerry are best friends. Robert and Emma are married. Jerry and Emma are lovers. Over nine years, feelings are masked and words are used in a struggle for power as the price of passion is paid and layers of hidden truth are revealed. Nobel Prize-winning author Harold Pinter's modern classic is an intricate, intimate unveiling of the moments leading to the ultimate break in trust. In its 33 years, Perseverance has never produced Harold Pinter – we look forward to sharing this Nobel Prize-winning author's work with you! Contact: www.perseverancetheatre.org.
Stage: "Betrayal," 7:30 p.m., Perseverance Theatre. Contact: www.perseverancetheatre.org.

SATURDAY, JAN. 19

UAS Ski/Board Lesson at Eaglec-

rest, All Day. Discounted prices for UAS students. Contact: 796-6544 or rec_center@uas.alaska.edu.

Movie: "The General" (1926) – Not So Silent Film Series, 4 p.m. & 9 p.m., Gold Town Nickelodeon. Music performed during this Silent Classic by RUMBLEFISH. Synopsis: Buster Keaton plays Johnny Gray, a Southern railroad engineer who loves his train engine, *The General*, almost as much as he loves Annabelle Lee (Marion Mack). When the opening shots of the Civil War are fired at Fort Sumter, Johnny tries to enlist — and he is deemed too useful as an engineer to be a soldier. All Johnny knows is that he's been rejected, and Annabelle, thinking him a coward, turns her back on him. When Northern spies steal the General (and, unwittingly, Annabelle), the story switches from drama and romance to adventure mixed with Keaton's trademark deadpan humor as he uses every means possible to catch up to the General, thwart the Yankees, and rescue his darling Annabelle — for starters. Contact: www.goldtownnick.com.

Movie: "Hitchcock," 7 p.m., Gold Town Nickelodeon. Contact: www.goldtownnick.com.

Stage: "Betrayal," 7:30 p.m., Perseverance Theatre. Contact: www.perseverancetheatre.org.

SUNDAY, JAN. 20

Juneau Jambusters Ukulele Jam, 11 a.m.-1 p.m., Rockwell/Costa's Diner. A gathering to eat good food and play ukulele. All ages and abilities welcome. Contact: <http://www.juneaujambusters.com/> (blog), or Rhonda at rhondulei@gmail.com.

Movie: "Hitchcock," 4 p.m. & 7 p.m., Gold Town Nickelodeon. Contact: www.goldtownnick.com.

Stage: "Betrayal," 7:30 p.m., Perseverance Theatre. Contact: www.perseverancetheatre.org.

THURSDAY, JAN. 24

Movie: Jump Society: A Film Festival of Locally Made Shorts, 7-8:30 p.m., Gold Town Nickelodeon. Get your free tickets at the Alaska Robotics Gallery at 220 Front St between Gross Alaska Theatre and the Viking Bar. Call 523-0303 if you

need directions. We are still accepting films and the deadline is Friday, Jan. 18. You can turn them in at Alaska Robotics or Lucid Reverie. Check out the submission guidelines for more information, and make sure to include the submission form with your film.

Stage: "Betrayal," 7:30 p.m., Perseverance Theatre. Contact: www.perseverancetheatre.org.

FRIDAY, JAN. 25

Talk: Fireside Lectures: "Across Juneau's Icefield," 6:30 p.m. & 8 p.m., Mendenhall Glacier Visitors Center. With Mike Hekkers, Franz Mueter and Dan Lesh.

Movie: Jump Society: A Film Festival of Locally Made Shorts, 7 p.m. & 9 p.m., Gold Town Nickelodeon. Contact: 523-0303.

Stage: "Betrayal," 7:30 p.m., Perseverance Theatre. Contact: www.perseverancetheatre.org.

SATURDAY, JAN. 26

UAS Ski/Board Lesson at Eaglecrest, All Day. Discounted prices for UAS students. Contact: 796-6544 or rec_center@uas.alaska.edu.

Non-Profit Garage Sale, 10 a.m.-6 p.m., Nugget Mall. Sign up for free if you are fundraising for a non-profit group or \$15 per table for household garage sales. \$10 per space, if you bring your own table. 789.4439 to sign up your non-profit group.

Movie: Jump Society: A Film Festival of Locally Made Shorts, 7 p.m. & 9 p.m., Gold Town Nickelodeon. Contact: 523-0303.

Stage: "Betrayal," 7:30 p.m., Perseverance Theatre. Contact: www.perseverancetheatre.org.

Music: Juneau Symphony Orchestra Presents "The Tender Land," 8 p.m., JDHS Auditorium. Contact: www.juneausymphony.org.

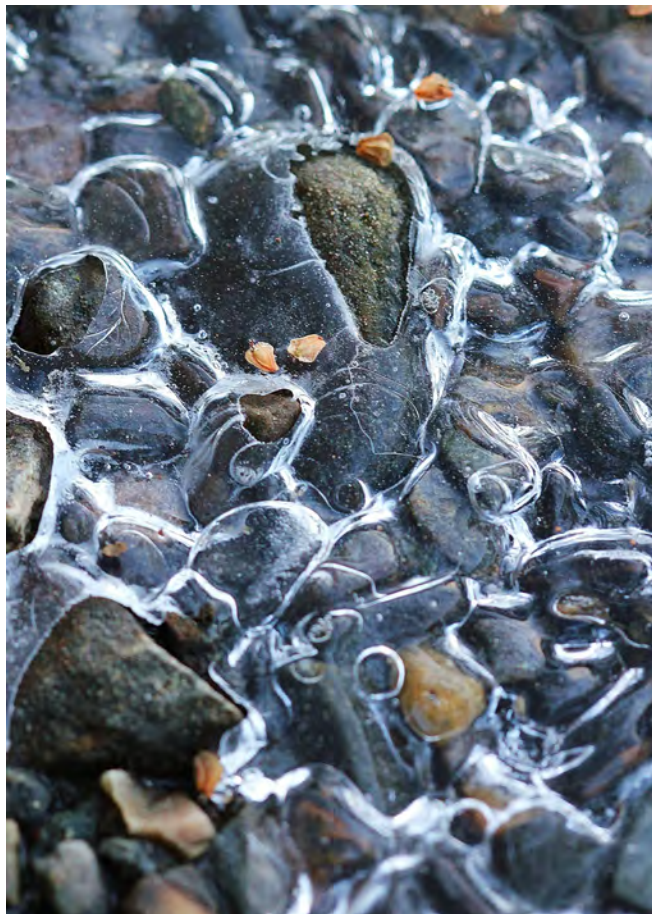
SUNDAY, JAN. 27

Music: Juneau Symphony Orchestra Presents "The Tender Land," 3 p.m., JDHS Auditorium. Contact: www.juneausymphony.org.

Stage: "Betrayal," 7:30 p.m., Perseverance Theatre. Contact: www.perseverancetheatre.org.



photos by Kinsey Hess



Enter To Win!

2013 PFED SWEEPSTAKES!

**Visit www.TrueNorthFCU.org
for more details!**



TRUE NORTH

FEDERAL CREDIT UNION

JUNEAU BRANCH
240 Main St., Ste. 102
(907) 523-4700

24/7 LOANS
Toll-Free 1-866-564-2259
or apply online www.TrueNorthFCU.org

MENDENHALL BRANCH
2777 Postal Wy.
(907) 523-4700

Federally Insured by NCUA

ON CAMPUS

WEDNESDAY, JAN. 16

Student Government Spring Club Fair, 11 a.m.-1 p.m., Mourant Cafe. Looking to find a fun activity? Come join our Student Clubs at the semester club fair. This year clubs will all have tables showing off what they have done for the semester.

There will be food, fundraisers and information. Come learn about the different clubs, and how to join them. Contact: 796-6528 or jypres@uas.alaska.edu.

Intro to Eaglecrest, 6:30 p.m., Rec Center. Come learn everything you need to know about Eaglecrest! Transportation - Lift tickets - Skis - Rentals Come check it out! Contact: 796-6544 or rec_center@uas.alaska.edu.

Stage: Comedian Geoff Keith, 8 p.m., Rec Center. Join us for the comedic styling of Geoff Keith. He's been on MTV, Comedy Central, and will now be gracing the UAS Rec Center stage with his awesomeness! UAS students, staff, and faculty get in free! Guests (18+) are \$5 at the door. Snacks will be provided! Sponsor: Student Activities Board & Student Government. Contact: 907-796-6325 or sab@uas.alaska.edu.

THURSDAY, JAN. 17
Retirement Potluck for Christina Bradley, 11 a.m.-12:30 p.m., Egan Library Room 211. Please join us for a celebration for Tina, who is retiring from the library after over 30 years of

service. Please stop by to wish Tina farewell and best wishes for her new life.

Salsa Dancing, 7 p.m., Rec Center. Great atmosphere and dancing instruction provided. Free for UAS students, faculty or staff; \$5 non affiliated. Contact: 796-6544 or rec_center@uas.alaska.edu.

FRIDAY, JAN. 18

Meeting: Student Government, 3:30 p.m., Mourant Conference Room. Open to all students, staff and faculty. Details: 907-796-6528.

Talk: Sound & Motion with Kyle Pickett, 7 p.m., Egan Lecture Hall. Join us for Juneau Symphony Director Kyle Pickett for a discussion of the process and pitfalls of orchestral performance accompanying film. "Sound & Motion" is a series highlighting music, film, and the spoken word.

Stage: Open Mic Night, 7:30 p.m., Rec Center. Sing, perform, recite, whatever — the mic is yours!

SATURDAY, JAN. 19
UFC Fight Night, 6 p.m., Rec Center. Watch the Ultimate Fighting Championship (UFC) live from Brazil. Belfort v. Bisping.

MONDAY, JAN. 21
Alaska Civil Rights Day. Campus closed. Some UAS offices will be open limited hours.
Tie Dye & Spaghetti Feed, 1 p.m., Rec Center. Come make an awesome shirt and eat! Tie dye starts at 1 p.m. Dinner is from

Alaska Robotics

A recent study shows that extroverts prefer robots with a more humanoid form...



While introverts prefer a more functional shape with less anthropomorphized detail.



Robot Goat Leg Pants

There were some statistical outliers.



4-6 p.m. Free UAS students, faculty or staff \$5 non affiliated. Contact: 796-6544 or rec_center@uas.alaska.edu.

TUESDAY, JAN. 22

Last Day to Return Spring Textbooks. For more information on the return of textbooks, please visit the UAS-Juneau Bookstore website: <http://uasbookstore.uas.alaska.edu/SiteText.aspx?id=1651>. Contact: 796-6401 or bookstore@uas.alaska.edu.

WEDNESDAY, JAN. 23

Intramural Sign-up Deadline, All Day, Rec Center. This is your last chance to sign up a team for intramural indoor soccer, volleyball, floor hockey and basketball.
Talk: "History of Wolf Management", 7 p.m., Glacier View Room (221). The Alaska Wildlife Alliance's "Wildlife Wednesday" invites you the presentation of the History of Wolf Management in Alaska by Wayne Regelin. Free admission. Contact: 907-523-5402 or tmbrown3@aol.com.

THURSDAY, JAN. 24

Stage: Comedy Mind Reader Sean Bott, 8 p.m., Rec Center. Sean Bott's blend of comedy, quick-witted improv, and jaw dropping mentalism will keep you stunned and laughing! Join us for a night of hilarity and amazement! Did I mention the snacks? There will be free yummy snacks. The whole event is free to UAS students, staff, and faculty. Guests (18+) are \$5 at the door. Contact: 796-6325 or sab@uas.alaska.edu.

FRIDAY, JAN. 25

Talk: "Edible Art of Place", 10 a.m.-noon, Glacier View Room (221). The Edible Art of Place invites the community, UAS faculty, staff, and administration to the January 25, 2013, presentations by Mr. Edward A. Kunz and Ms. Priscilla Kunz on the traditional and contemporary preservation of salmon and halibut. Free admission. Contact: 796-6405 or ernestine.hayes@uas.alaska.edu.

Billiards Tournament, 7 p.m., Rec Center. Register prior to 6:30 p.m.

at the Rec Center and play to win!

MONDAY, JAN. 28

Climbing Wall Open House, 7:30-10 p.m., Rec Center. Learn how to climb! Movies, bouldering, friendship! Free for UAS students, faculty or staff; \$5 non-affiliated. Contact: 796-6544 or rec_center@uas.alaska.edu.

TUESDAY, JAN. 29

Last Day to Drop with 100% Refund. Last day to drop with 100% refund for full-term courses. Contact: 907-796-6100 or registrar@uas.alaska.edu.
Last Day to Change Credit or Audit. Last day to change credit or audit for full-term classes. Contact: 796-6100 or registrar@uas.alaska.edu.
Knitting Night, 7 p.m., Rec Center. Get together with other knitters. Share patterns, stitches, yarn. Free admission. Contact: 796-6544 or rec_center@uas.alaska.edu.
Intramural Volleyball League, 8 p.m., Rec Center. 6-on-6 volleyball. Team entry or sign up as a free agent. \$5 + REC Center membership. Contact: 796-6544 or rec_center@uas.alaska.edu.

Want us to list your event in our calendar? Send us the information via email to whalesong@uas.alaska.edu. Please include "calendar submission" in the subject.



ONLY FROM AT&T

Rethink Possible®



savings begin here.

You could be saving 17%

on qualifying AT&T services.†

As a part of the University of Alaska, you'll enjoy the AT&T Sponsorship Program discount and all the other benefits of AT&T:

- Unlimited usage on AT&T's entire national Wi-Fi® network, at no additional charge.¹
- The power of the Internet in the palm of your hand.
- All the latest social networking apps.
- Simultaneous use of voice and data on the nation's fastest mobile broadband network.²

To purchase online, visit att.com/wireless/.
Visit www.wireless.att.com/business/enrollment to sign up for discounts.
If you visit a local AT&T store, please have proof of eligibility (employee badge, paystub or student ID).
Mention FAN: 4801136



Samsung Captivate™ Glide

Pantech® Pocket™

Nokia Lumia 900

Visit a local AT&T store to best serve your communication needs.

1.866.MOBILITY - ATT.COM

Anchorage

5th Avenue Mall, 1st Floor, 907-258-2191
4711 Business Park Boulevard, 907-561-3344
Dimond Center Mall, 907-336-3040
Tikahtnu Commons, 907-338-3280
The Mall at Sears, 907-279-5288

Eagle River

11432 Business Park Boulevard, 907-622-1725

Fairbanks

356 Old Steese Highway, 907-459-2355
Aurora Center, 407 Merhar Avenue, 907-455-4381
Teddy Bear Plaza, 907-451-1942

Juneau

9400 Glacier Highway, 907-790-3637

Ketchikan

2417 Tongass Avenue, 907-247-2880

Sitka

201 Katlian Street, 907-747-3617

Soldotna

35553 Kenai Spur Highway, 907-262-7090

Wasilla

1865 E. Parks Highway, 907-631-0350

4G speeds delivered by HSPA+ with enhanced backhaul. Not available everywhere. Deployment ongoing. Compatible data plan required. Learn more about 4G LTE at att.com/network.

¹ Access includes AT&T Wi-Fi Basic. Other restrictions apply. See attwifi.com for details and locations.

² Mobile broadband not available in all areas.

† Limited-time offer. Smartphones require a new 2-year agreement with qualifying voice and data plans. Subject to Wireless Customer Agreement. Credit approval required. Activation Fee \$36/line. Geographic, usage and other terms, conditions and restrictions apply, and may result in service termination. Coverage and services not available everywhere. Taxes and other charges apply. Term may vary based on your business agreement. Data: If usage exceeds your monthly data allowance, you will automatically be charged overage for additional data provided. Early Termination Fee (att.com/equipment/ETF): After 30 days, ETF up to \$325. Restocking fee up to \$35. Other Monthly Charges/line include a Regulatory Cost Recovery Charge (up to \$1.25), a gross receipts surcharge, federal and state universal service charges, fees and charges for other government assessments. These are not taxes or government required charges. Monthly discount: Available to qualified employees and students of companies, government agencies and colleges/universities with a qualified business agreement ("Business Agreement") to Business Agreement and may be interrupted and/or discontinued without notice only to the monthly service charge of qualified plans. A minimum number of employees, minimum monthly service charge for qualified plans, additional AT&T services or other requirements may apply for eligibility. Discounts may not be combined. For some accounts, actual discount can vary monthly depending on your employer's aggregate volume of qualified charges. Offer subject to change. Additional conditions and restrictions apply. See your AT&T representative and contract and rate plan for details.

Android is a trademark of Google Inc. Nokia is a registered trademark of Nokia Corporation. Samsung and Captivate Glide are both trademarks of Samsung Electronics America, Inc. and/or its related entities. Screen images simulated. Wi-Fi is a trademark of the Wi-Fi Alliance. Service provided by AT&T Mobility. © 2012 AT&T Intellectual Property. All rights reserved. AT&T, the AT&T logo and all other AT&T marks contained herein are trademarks of AT&T Intellectual Property. All other marks contained herein are the property of their respective owners.