

Alaska Fuel Price Projections 2012-2035

prepared for:
Alaska Energy Authority

prepared by:
Ginny Fay
Alejandra Villalobos Meléndez
Sohrab Pathan



Institute of Social and Economic Research
University of Alaska Anchorage

July 2012

ISER Working Paper 2012.1

Contents

Introduction	3
Methods and assumptions.....	3
Natural Gas	5
Fuel Oil	9
References	14

Suggested citation:

Fay, G. and Villalobos-Melendez, A. and Pathan, S. 2012. *Alaska Fuel Price Projections 2012-2035*, Technical Report, Institute of Social and Economic Research, University of Alaska Anchorage, prepared for the Alaska Energy Authority, 14 pages.

Introduction

This and previous Alaska fuel price projections were developed for the Alaska Energy Authority (AEA) for the purpose of estimating the potential benefits and costs of renewable energy projects. Project developers submit applications to AEA for grants awarded under the Alaska Renewable Energy Fund program process. The fuel price projections are not price forecasts but a statistical estimation of potential future utility avoided fuel costs based on the relationships between historic utility fuel prices and crude oil and refinery prices reported by the U.S. Department of Energy, Energy Information Administration (EIA). These statistically estimated relationships are used to project potential future fuel prices based on EIA's published *Annual Energy Outlook* crude oil and natural gas price forecasts.

In addition to developing these low, medium and high fuel price projections, estimates of the social cost of carbon (previously included as estimates of potential carbon taxes), and a price differential for home heating fuel are provided and are incorporated into the Renewable Energy Fund benefit-cost model for evaluating potential projects. Previously, a five cents premium for low sulfur fuels was added to the projections in anticipation of implementation of low sulfur fuel air quality requirements. However, the low sulfur fuel requirement was implemented in 2010; hence recent prices reflect the effects of the rule and a premium is no longer necessary. The fuel price projections are limited in their applicability to the modeling of project benefits and costs and should not be considered fuel price forecasts.

The ranges of values between the low, medium (reference), and high projections are based on the assumptions implicit in the EIA oil price forecasts. Readers are encouraged to directly review the EIA *Annual Energy Outlook 2012* at: <http://www.eia.doe.gov/oiaf/aeo/index.html>

We generated low, medium, high case fuel price projections for the years 2012-2035 for the following fuels:

- Incremental natural gas in Southcentral Alaska delivered to a utility-scale customer
- Incremental diesel delivered to a PCE community utility tank
- Incremental home heating oil/diesel purchased in a PCE community
- Incremental home heating oil/diesel purchased in Anchorage, Fairbanks, Juneau, Kenai, Ketchikan, Palmer, and Wasilla

This memorandum provides documentation of the assumptions and methods used to develop these projections. A companion Excel workbook contains the detailed projections.

Methods and assumptions

Base year and time horizon

Our projections run from 2012 to 2035. They are computed and reported in inflation-adjusted year 2011 dollars. We recognize that a "projection" for 2012 is unlikely to match actual 2012 data. However, much of the data we rely on is published only through 2011.

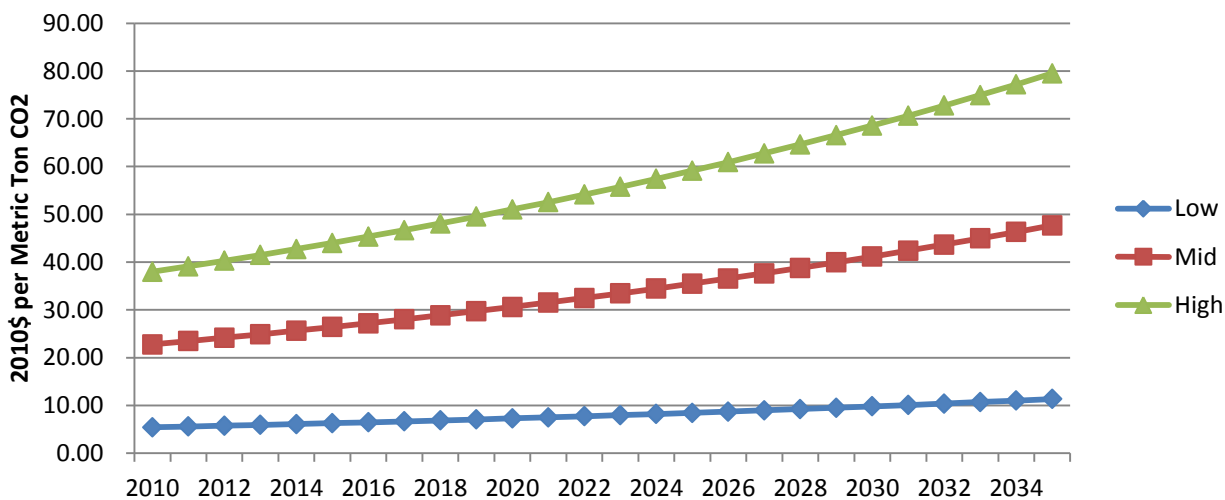
Ultra low sulfur diesel premium

We no longer include a five cent additional price premium starting in year 2008 for rural areas, to account for the additional refining costs of ultra-low sulfur diesel. The low sulfur fuel requirement was implemented in 2010 and recent prices reflect this factor.

Carbon pricing

In this fuel price projection update, we continue to use the source introduced in the previous June 2011 update.¹ The federal government developed estimates for the social cost of carbon (SCC) to be used in benefit-cost analyses for federally funded projects. In this update, we continue to use the SCC estimates as explained by a working paper from the National Bureau of Economic Research.² For the High case, we use the cost of \$35 (2007 dollars) per ton of CO₂ emissions in 2010. For the Medium case, we use the 'central value' of \$21 (2007 dollars) per ton of CO₂ emissions in 2010. For the Low case, we use the cost of \$5 (2007 dollars) per ton of CO₂ emissions in 2010. All three estimates are converted to 2011 constant dollars and inflated over time at 3%, which is the average inflation rate of the U.S. Consumer Price Index (CPI) from 1985 to 2011.³ The carbon pricing methods were modified to reflect current 2011 data. The social cost of carbon is no longer added to the fuel price projections, but rather included separately in the benefit-cost model developed to evaluate proposed projects. However, the flexibility of adding SCC to the price projections remains. Figure 1 summarizes the assumed carbon price trajectories. Similar to the ultra low sulfur diesel premium, these assumptions are parameters that can be changed in the model workbook.

Figure 1. Carbon price trajectories (year 2011\$ per metric ton CO₂)



Sources: ISER calculations based on Greenstone (2011).

¹ In fuel price projections prior to the June 2011 update, the cost of carbon was introduced in the model using the estimates developed by the Massachusetts Institute of Technology (MIT) *Future of Coal* study (Massachusetts Institute of Technology. 2007. *The Future of Coal: Options for a Carbon-Constrained World*. (March). Available at: <http://web.mit.edu/coal/>).

² Greenstone, M., Kopits, E., and Wolverton, A. 2011. *Estimating the social cost of carbon for use in U.S. federal rulemakings: a summary and interpretation*. NBER Working Paper 16913, available at: <http://www.nber.org/papers/w16913>.

³ Consumer Price Index All Urban Consumers, All items. U.S. Department of Labor, Bureau of Labor Statistics. Available at: <ftp://ftp.bls.gov/pub/special.requests/cpi/cpi.txt>.

Natural Gas

Background

The Cook Inlet natural gas market is structurally different from the Lower 48 natural gas markets because it is not connected to a large pipeline network and has relatively few buyers and sellers of gas. As a result, Cook Inlet does not have a natural gas spot market to reveal the true market value of natural gas. In Lower 48 natural gas markets, the market value of gas is revealed by market forces as thousands of buyers and sellers bid on natural gas spot markets. Most natural gas used by Lower 48 utilities is not purchased on the spot market, but the physical access to spot markets ensures the price utilities pay for gas reflects the true value of the gas. Public utility regulators in these markets generally do not have to regulate the price utilities pay for natural gas because the price is largely determined by local and regional markets.

In contrast, the Cook Inlet natural gas market has no spot market and thus no clear market signals of value. Instead, all natural gas sales are based on indexed prices agreed upon in contracts negotiated between natural gas producers and a limited number of buyers. These contract prices are negotiated between natural gas producers and utilities and may not reflect the true value of the gas because utilities do not actually bear the cost of the gas. Instead the entire natural gas cost is passed on to the utilities' customers who do not directly participate in price contract negotiations. The Regulatory Commission of Alaska (RCA) is tasked with protecting the utilities' customers by ensuring that rates are fair and reasonable. Unlike its Lower 48 counterparts, the RCA must determine what merits a fair and reasonable natural gas price in the absence of a natural gas market price.

Historically, natural gas prices, as determined by RCA approved contracts, pegged the price of natural gas to a basket of Lower 48 price indexes including natural gas, crude oil, and heating fuel. This pricing method resulted in relatively low natural gas prices until recently when a dramatic increase in oil prices drove up the price of Cook Inlet natural gas purchased on these contracts.

Over the last few years there have been concerns regarding future availability of Cook Inlet natural gas which would necessitate significant capital investment on behalf of the natural gas producers to meet growing demand. In the past, producers have argued that the return on capital for Cook Inlet natural gas investments needed to be competitive with capital investments in other markets and indicated that they need the Southcentral price to more closely resemble Lower 48 prices to spur continued investments in field development and production. Under this reasoning the Cook Inlet producers, local utilities, and the RCA began to agree to and approve contracts with the Cook Inlet natural gas price indexed to Lower 48 spot prices.⁴ However, with the sudden advent of shale gas supplies in the lower 48, natural gas prices dropped significantly. As a result, Cook Inlet may be becoming a more appealing natural gas production location given the now relatively higher prices, available infrastructure and ready but less competitive market. In fall 2011, Escopeta Oil company announced that it discovered a large deposit (estimated at 3.5 trillion cubic feet) of Cook Inlet natural gas modifying expectations and assumptions about Cook Inlet natural gas development and future availability. This natural gas projection attempts to take these factors into consideration, though the market is clearly in flux and difficult to predict.

⁴ For more information on Southcentral Alaska natural gas prices and contracts, see the RCA website: <http://rca.alaska.gov/RCAWeb/home.aspx>

Assumptions

The analysis in this report assumes that Chugach Electric Association (CEA) is the marginal supplier of electricity in Southcentral Alaska. Also, it is assumed that the recently approved supply contract between CEA and ConocoPhillips is the marginal supply of gas for electric power generation.

The concept of marginal supply in this context refers to the most recently purchased energy to supply electricity, not to the energy supply that would first be disrupted or offset in the case of new renewable energy. This is appropriate for the projection of prices because the most recently purchased energy is a better indicator of future energy prices than previously purchased energy.

The contract between CEA and ConocoPhillips, filed May 12, 2009 (<http://rca.alaska.gov/RCAWeb/Certificate/CertificateDetails.aspx?id=7eefd8ff-1630-4ed0-80f6-59e1aed8e391>), states that ConocoPhillips will supply natural gas sufficient for CEA to meet 100% of unmet gas requirements through April 2011, roughly 50% of Chugach's unmet gas requirements from June 2011 through 2015, and about 25% of Chugach's unmet needs in 2016 (Figure 2).

Figure 2. Chugach Electric Association natural gas supply, 2009-2016

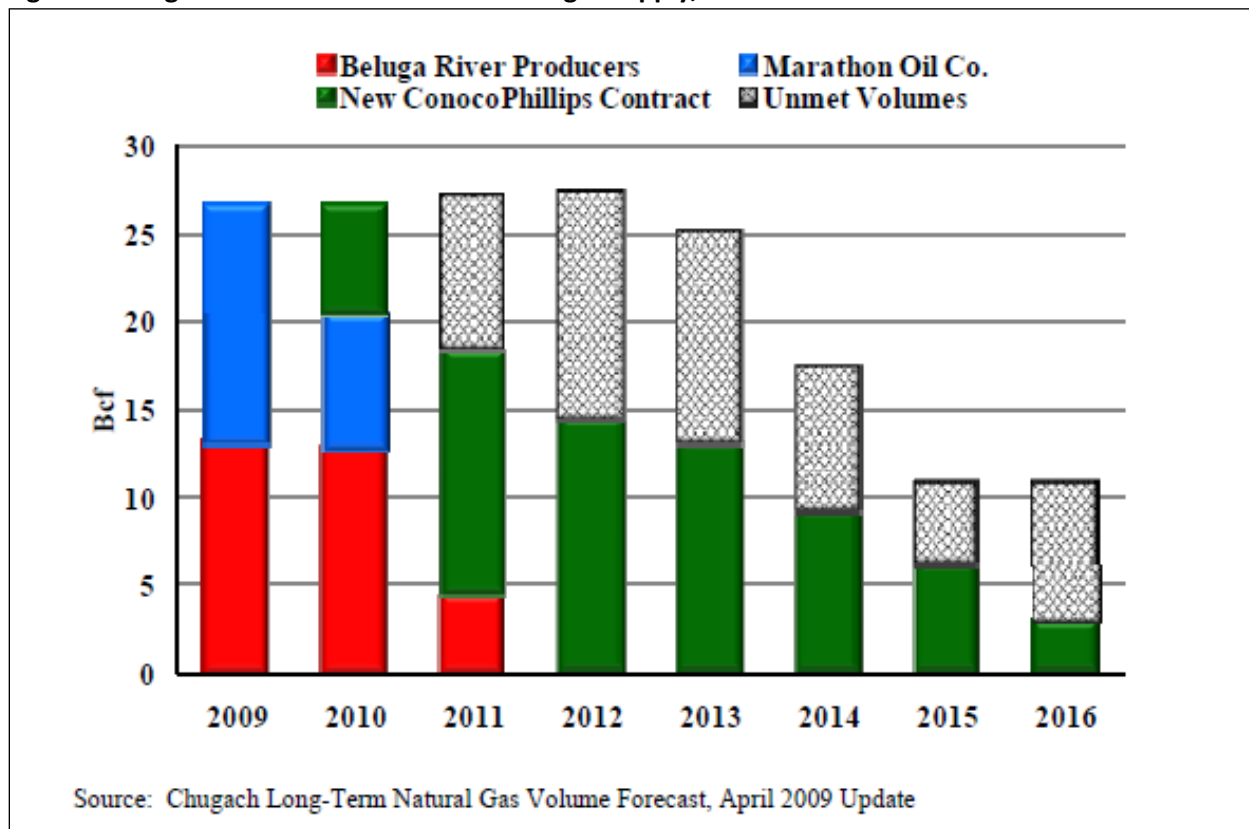


Image reproduced from Chugach Electric Association, Gas Supply Contract with ConocoPhillips, 2009.

The majority of the gas to be supplied to Chugach Electric Association for base load electric generation is termed "Firm Fixed Gas." The price of this gas is based on an index of natural gas spot markets from natural gas producing areas. This index is termed "Production Area Composite Index," or "PACI." The PACI consists of:

- El Paso, Permian Basin; under the heading Permian Basin Area

- Waha; under the heading Permian Basin Area
- ANR, Oklahoma; under the heading Oklahoma
- Columbia Gulf, Louisiana; under the heading Louisiana-Onshore South
- Agua Dulce Hub: under the heading South-Corpus Christi

In recent history, the price of PACI has been 90% that of Henry Hub⁵ and the prices of both have been highly correlated (Figure 3).

Figure 3. Relationship between PACI and Henry Hub natural gas prices, 2005-2009

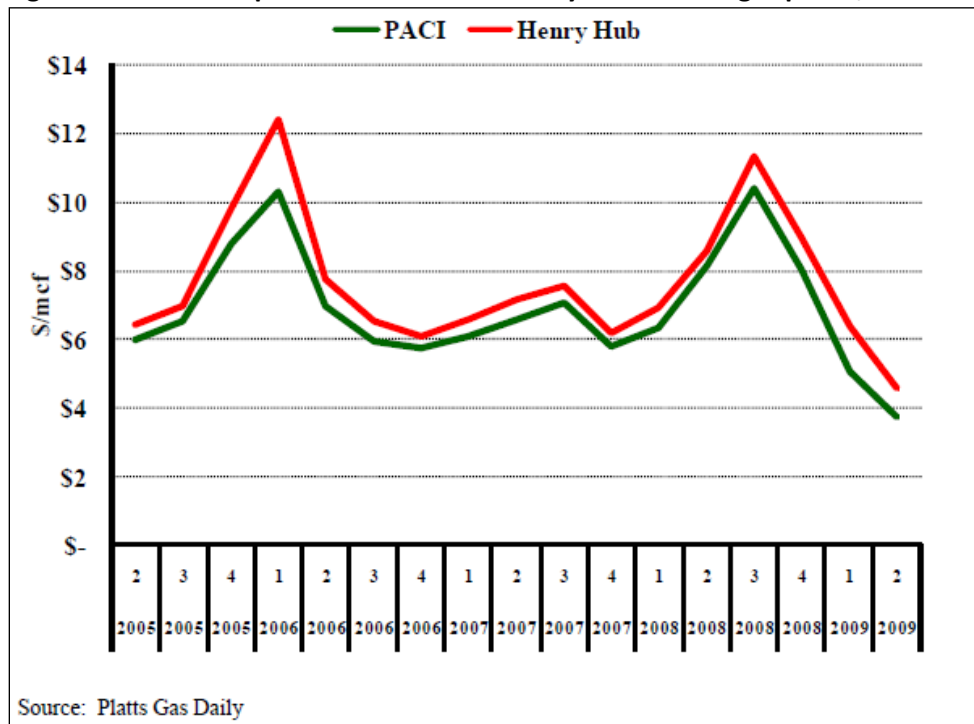


Image reproduced from Chugach Electric Association, Gas Supply Contract with ConocoPhillips, 2009.

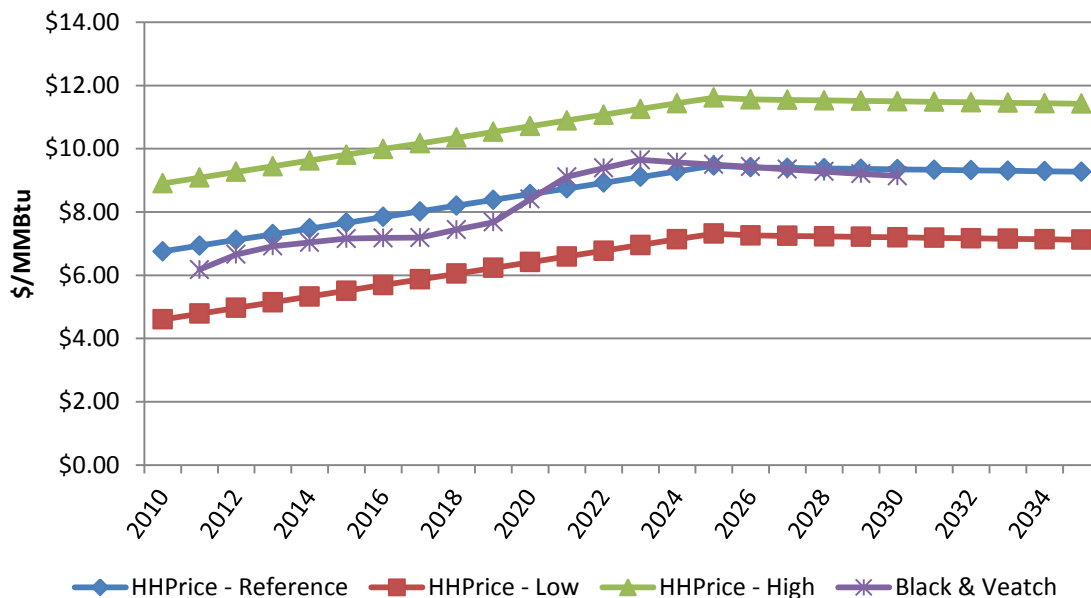
Price Projection

The Chugach contract assumes one mcf (one thousand cubic feet) of natural gas equals one mmBtu (million British thermal units) of natural gas. The EIA forecasts the Henry Hub price in dollars per mmBtu but the Chugach Electric Association gas is priced in dollars per mcf. In previous forecasts, we used the same assumption that the Southcentral Alaska natural gas price in dollars per mcf equals 90% of the forecast Henry Hub price in dollars per mmBtu. However, in the lower 48 markets there is abundant shale gas resulting in low natural gas prices while demand continues to put pressure on Cook Inlet supplies. To address this decoupling, in the previous forecast we assumed a 90% relationship continued through 2014, becoming 100% in 2015 through 2020, and exceeding by 10% the EIA Henry Hub price forecast from 2021 through 2030.

⁵ Henry Hub is the pricing point for natural gas futures contracts traded on the New York Mercantile Exchange (NYMEX). It is a point on the natural gas pipeline system in Erath, Louisiana.

Nonetheless, both Cook Inlet and national markets are undergoing major structural changes which impact our ability to project with high confidence levels. We believe that over time the overall relationship will stabilize so we base our projection following the Henry Hub historical trend line. To project the Henry Hub spot price in 2011 dollars (\$/MMBtu), we used a linear regression of historical monthly Henry Hub spot price data from 1997 to 2011, and used that regression model for the reference case. To derive the high and low projections, we used the standard deviation (+/-SD) to scale the Henry Hub Price (Y-intercept) while the slope remains the same. The linear equation we used for the reference case is $HHPrice = (0.181 * Year) - 357$, where HHPrice is the Henry Hub spot price for 1Mcf=1MMBtu in 2011 dollars. We also evaluated a price projection using a Classical Time Series Decomposition (CTSD) method of the historical monthly Henry Hub sport price and of the quarterly published Prevailing Values for Cook Inlet Gas from 1994 to 2011.⁶ As in previous projections, we compared these analyses to the natural gas price forecast prepared for the Railbelt Integrated Resource Plan by Black & Veatch (see this publication for details on the forecast methodology).⁷ Both CTSD projections and the Black & Veatch forecast contrasted with the linear regression method in that the projection trend line started to either level off or decline from 2020 to 2025. Based on the results of the three projections, we adjusted the trend line after 2025. This adjustment was estimated by taking the average of natural gas prices from all three projections and estimating their trend line. After year 2025 the reference case linear equation is adjusted to be $HHPrice = (-0.0153 * Year) - 40$.

Figure 4. Southcentral natural gas prices, 2012-2035



Sources: U.S. EIA Annual Energy Outlook 2012, ISER calculations; Black and Veatch, 2010.

⁶ Cook Intel Prevailing Value of Natural Gas published by the Alaska Department of Revenue, Tax Division; available at <http://www.tax.alaska.gov/programs/oil/prevailing/cook.aspx>.

⁷ Black & Veatch, 2010, *Alaska Railbelt Regional Integrated Resource Plan (RIRP) Study*, Final Report, prepared for the Alaska Energy Authority, February 2010.

Fuel Oil

Background

Fuel oil prices are simpler (although not easier) to project because there are no existing complex contracts with formulas. Our projections are based on U.S. EIA *Annual Energy Outlook 2012* forecasts for crude oil. We use the Composite Refiner Acquisition Cost of crude oil (CORAC) as the basis for the fuel oil projections.

Key Assumptions

This projection update follows the same methodology as the projection update of June 2011.

Assumption 1. The price of diesel⁸ to a particular PCE utility bears a stable linear relationship to the refiner acquisition cost of crude price. In the projections prior to June 2011, parameters were calculated using a pool regression where the coefficient was allowed to be different from 1.0 and **not** allowed to vary by community.⁹ A coefficient above 1.0 indicated “percentage markup pricing” as opposed to a straight pass-through of a crude price increase/decrease dollar for dollar.

In contrast, in the current (and June 2011) update we ran individual linear regressions for each community, which provided a unique slope and intercept for each community. This better represents how communities are affected differentially by crude oil prices. In addition, access to purchased fuel is affected by each community’s geographic location; hence some communities have more frequent deliveries of fuel than others. To build a more accurate projection, in the June 2011 update we ran two regressions; in one we lagged the crude oil price by one year and in the other no lag was allowed. Informed by the regressions, we analyzed which communities had prices better explained with a year lag versus those who did not. We used the R-squared and P-values to select the intercept and slopes for each community appropriately. As expected, the scenario without a lag in crude prices better explained the crude and fuel price relationships for communities in the Southeast, Southcentral and Southwest regions which have more flexibility in sourcing their fuel and can purchase fuel more frequently. As anticipated, the lagged crude price better reflects the fuel prices for most rural PCE communities that have more challenging transportation access to purchased fuel due to remote locations and winter conditions, especially winter sea ice that permits only one or two fuel deliveries per year. Crude oil price changes have a lagged effect on these communities. Based on that analysis, in the current update, regressions with and without a year lag were run accordingly. The communities that were subject to the No-Lag regression are:

Table 1. Communities that did not show a lagged relationship to crude oil prices

Community ID	Community Name	Census Area
14	Craig	Prince of Wales-Hyder (CA)
28	Hydaburg	Prince of Wales-Hyder (CA)
65	Skagway	Skagway

⁸PCE prices collected from PCE statistical reports.

⁹ Fay, G. and Saylor, B. 2010. *Alaska Fuel Price Projections 2010-2030*, Available at: http://www.iser.uaa.alaska.edu/Publications/oil_price_projection_aea07_2010_v1.xls

73	Tok	Southeast Fairbanks (CA)
95	Chalkyitsik	Yukon-Koyukuk (CA)
103	Cordova	Valdez-Cordova (CA)
150	Pelican	Hoonah-Angoon (CA)
151	Perryville	Lake and Peninsula
159	Saint George	Aleutians West (CA)
175	Unalaska	Aleutians West (CA)

Assumption 2. We were not able to rigorously determine a home delivery surcharge by statistical methods. However, there is some evidence of a relationship between residential home heating fuel prices, crude oil and PCE utility fuel prices (Table 2).

Table 2. Correlations between residential home heating fuel, PCE utility fuel and crude oil prices

	Residential home heating fuel (rural)	PCE utility fuel	Crude oil
Residential home heating fuel	1.0000		
PCE utility fuel	0.7312	1.0000	
Crude Oil	0.4543	0.3938	1.0000

The average difference between PCE fuel and Alaska Housing Finance Corporation (AHFC) fuel survey prices (retail-heating) between years 2008 to 2011 was \$1.58. As a result, we suggest that the community utility fuel price plus \$1.58 per gallon be used as the avoidable cost of home delivery when small amounts of home-delivered fuel are being avoided. However, when substantial amount of delivered fuel is avoided (e.g., a community district heating system or mass retrofit for biomass heating), we suggest that the appropriate credit for avoided delivery charges is zero. The suggested heating fuel premium based on the amount of fuel is shown in Table 3 below. These are the amounts applied in the Renewable Energy Fund project economic review model.

Table 3. Suggested fuel premiums per gallon of displaced fuel

Gallons of Displaced Heating Fuel	Heating Fuel Premium
<1,000	\$1.58
1,000 < 25,000	\$1.05
25,000 > 100,000	\$0.53
>100,000	\$0.00

Source: ISER fuel price analysis.

Determining the value of an avoided gallon of fuel oil for space heating by renewable energy projects is complex because a substantial portion of the costs that ultimately determine the price per gallon of village home heating fuel are fixed. In addition, specific community circumstances, such as whether a bulk fuel storage facility was recently upgraded or will soon need to be, influence actual potential avoided costs; most of the costs of storage and delivery can only be avoided in “lumps.” More analysis of community non-utility fuel use and prices will be necessary as more energy projects displace space heating diesel fuel.

Other important factors besides crude oil prices affect the final community wholesale fuel price. These factors include: the varying time intervals between the placement of orders, the timing of departures of fuel deliveries from refineries, and fuel storage inventories in communities, as well as distances between refineries, fuel distributors and community storage facilities.¹⁰ However, due to data limitations these factors are not represented in our simple statistical regression. All of these factors may contribute to sticky downward movement of fuel prices, so when crude oil prices decline, wholesale fuel prices in rural communities may not decline in proportion to the decline of crude oil prices.

Projection method

The fuel oil price projection is based on the imported crude oil price projection from EIA's *Annual Energy Outlook 2012* (AEO).

1. Obtain EIA's Annual Energy Outlook 2012 from the following URL:
<http://www.eia.gov/oiaf/aeo/tablebrowser/>
2. Obtain the forecast Imported Crude Oil Price from Table 1 for the Reference, Low Oil Price, and High Oil Price cases.
3. Obtain the monthly "U.S. Crude Oil Imported Acquisition Cost by Refiners (Dollars per Barrel)" (CORAC) from the following URL:
http://tonto.eia.doe.gov/dnav/pet/pet_pri_rac2_dcu_nus_m.htm
4. For each month, convert the crude price from step 3 to 2011 dollars ("real crude price") using the CPI-U for that month and the average CPI-U (U.S. Consumer Price Index for All Urban Consumers, <http://www.bls.gov/CPI/>) for 2010.
5. Calculate the average real crude price by fiscal year. Divide by 42 to obtain real crude price per gallon.
6. Obtain PCE fuel prices from fiscal years 1985 – 2011. The PCE Statistical Reports for fiscal years 2002 through 2010 can be obtained from the following URL:
<http://www.aidea.org/aea/programspce.html>.¹¹
7. Calculate the average CPI-U by fiscal year, and convert the PCE prices to 2011 dollars based on the average CPI-U for that fiscal year and the average CPI-U for FY2011.

¹⁰ Szymoniak, Nick; Fay, Ginny; Villalobos-Melendez, Alejandra; Charon, Justine; Smith, Mark. 2010. *Components of Alaska Fuel Costs: An Analysis of the Market Factors and Characteristics that Influence Rural Fuel Prices*. University of Alaska Anchorage, Institute of Social and Economic Research. Prepared for the Alaska State Legislature, Senate Finance Committee, 78 pages.

Wilson, Meghan, Ginny Fay, Ben Saylor, Nick Szymoniak, and Steve Colt. 2008. *Components of Delivered Fuel Prices in Alaska*. Anchorage: University of Alaska Anchorage, Institute of Social and Economic Research.

¹¹ Data from prior years were obtained from printed copies of statistical reports, but are not available through the AEA website. The forecast workbook includes a worksheet with a list of communities and their respective prices from year 1985 to 2011.

8. Perform an ordinary least squares regression for each community where the real fuel price per gallon is the dependent variable and real crude price per gallon lagged by one year is the independent variable. Then repeat the regression without lagging the crude oil price. Evaluate the regression output (R-square and P-value) to select the parameters that better explain the crude-fuel relationship for each community. The constant term of the regression represents the intercept of each community and the beta of the crude oil price represents the slope.
9. Some communities with little or no data require using data from other communities as a proxy. The proxy communities suggested by AEA, listed with the original community first, then the proxy, are as follows:
 - **For Dot Lake: Substitute:** Tok
 - Hollis: Craig
 - Klawock: Craig
 - Thorne Bay/Kasaan: Craig
 - Kasigluk: Nunapitchuk
 - Pitkas Point: St. Mary's
 - Chignik Lake: Chignik Lagoon
 - Klukwan: Kake
 - Kobuk: Shungnak
 - Napakiak: Napaskiak

Perform these substitutions not by copying data points from the proxy community into the missing slots, but by copying the regression coefficients from the proxy community.

10. Apply the slope and intercepts from the regression to the EIA *Annual Energy Outlook* forecasts (Low, Reference, and High cases) to predict fuel oil price per gallon for each PCE community as a function of Imported Crude Oil Price per gallon (lagged by one year or not, as appropriate) for each year from 2012 to 2035.
11. In previous projection an 'Incremental Cost of Ultra Low Sulfur Diesel' of five cents was added at this step to the projected price for all three cases (low, medium, and high). However, given the implementation of ultra-low sulfur diesel requirements, this premium is no longer necessary. Continuing with changes implemented in the June 2011 projection, the 'CO₂ Equivalent Allowance Cost' is no longer added to allow flexibility in the use of these projections. We now appropriately add the 'CO₂ Equivalent Allowance Cost' in the benefit-cost model rather than directly into the fuel price projection.
12. Take the moving average three (MA₃) to smooth out the projections for all three cases.
13. The calculated prices are for utilities. For avoided use of home-delivered fuel, add \$0/gallon if a significant amount of fuel is avoided. Add \$1.58 if a small amount is avoided (no clear relationship was found between AHFC surveyed home heating oil prices and PCE utility fuel prices, but the average difference was approximately \$1.58). See assumption 2 and Tables 2 and 3 above for more details.
14. For urban places (Anchorage, Fairbanks, Juneau, Kenai, Ketchikan, Palmer, Wasilla), obtain prices for heating oil from Alaska Housing Finance Corporation's annual fuel price surveys conducted in years

1999 through 2011 (contact ISER or AHFC to obtain this data). Use the average of #1 and #2 heating oil. Where prices are missing, use the price included in the Alaska Food Cost Survey conducted for December (<http://www.uaf.edu/ces/fcs/>) (there will still be some missing data points). Adjust prices to 2011 real dollars.

15. Integrate CORAC fuel prices for the appropriate period into the dataset. Adjust prices to 2011 real dollars.
16. For each place, do a linear regression with the diesel price as the dependent variable and CORAC as the independent variable.
17. Use the regression coefficients to project heating diesel prices as a function of Imported Crude Oil Price per gallon (Low, Medium, and High cases) for each year from 2012 to 2035 for each community.

References

Alaska Energy Authority, Power Cost Equalization, fuel prices from fiscal years 1985 – 2011. The PCE Statistical Reports for fiscal years 2002 through 2010 can be obtained from the following URL:
<http://www.akenergyauthority.org/programspce.html>

Alaska Food Cost Survey, <http://www.uaf.edu/ces/fcs/>

Alaska Housing Finance Corporation, Annual fuel price surveys conducted in years 1999 through 2011.

Black & Veatch, 2010, *Alaska Railbelt Regional Integrated Resource Plan (RIRP) Study*, Final Report, prepared for the Alaska Energy Authority, February 2010. Available at
<http://www.akenergyauthority.org/regionalintegratedresourceplan.html>

Chugach Electric Association. Gas Supply Contract with ConocoPhillips, May 2009. Available at:
<http://rca.alaska.gov/RCAWeb/ViewFile.aspx?id=95B1BE87-1123-4D04-8766-964E7F813A77>

Fay, G. and Saylor, B. 2010. *Alaska Fuel Price Projections 2010-2030*, Available at:
http://www.iser.uaa.alaska.edu/Publications/oil_price_projection_aea07_2010_v1.xls

Fay, G. and Villalobos-Melendez, A. and Pathan, S. 2011. *Alaska Fuel Price Projections 2011-2035*, Technical Report, Institute of Social and Economic Research, University of Alaska Anchorage, prepared for the Alaska Energy Authority, 13 pages. Available at:
http://www.iser.uaa.alaska.edu/Publications/Fuel_price_projection_2011-2035_final.pdf

Greenstone, M., Kopits, E., and Wolverton, A. 2011. *Estimating the social cost of carbon for use in U.S. federal rulemakings: a summary and interpretation*. NBER Working Paper 16913, available at:
<http://www.nber.org/papers/w16913>.

Massachusetts Institute of Technology. 2007. *The Future of Coal: Options for a Carbon-Constrained World*. (March). Available at: <http://web.mit.edu/coal/>

Szymoniak, Nick; Fay, Ginny; Villalobos-Melendez, Alejandra; Charon, Justine; Smith, Mark. 2010. *Components of Alaska Fuel Costs: An Analysis of the Market Factors and Characteristics that Influence Rural Fuel Prices*. University of Alaska Anchorage, Institute of Social and Economic Research. Prepared for the Alaska State Legislature, Senate Finance Committee, 78 pages.

U.S. Department of Energy, Energy Information Administration. Updated *Annual Energy Outlook 2012*. Available at: <http://www.eia.doe.gov/oiaf/aeo/index.html>

U.S. Department of Energy, Energy Information Administration. "U.S. Crude Oil Imported Acquisition Cost by Refiners (Dollars per Barrel)" (CORAC):
http://tonto.eia.doe.gov/dnav/pet/pet_pri_rac2_dcu_nus_m.htm

Wilson, Meghan, Ginny Fay, Ben Saylor, Nick Szymoniak, and Steve Colt. 2008. *Components of Delivered Fuel Prices in Alaska*. Anchorage: University of Alaska Anchorage, Institute of Social and Economic Research, 70 pages.