



Title	Long-term response of oceanic carbon uptake to global warming via physical and biological pumps
Author(s)	Yamamoto, Akitomo; Abe-Ouchi, Ayako; Yamanaka, Yasuhiro
Citation	Biogeosciences, 15(13), 4163-4180 https://doi.org/10.5194/bg-15-4163-2018
Issue Date	2018-07-10
Doc URL	http://hdl.handle.net/2115/71486
Rights(URL)	http://creativecommons.org/licenses/by/4.0/
Type	article
Additional Information	There are other files related to this item in HUSCAP. Check the above URL.
File Information	bg-15-4163-2018-supplement.pdf



[Instructions for use](#)

Supplement of Biogeosciences, 15, 4163–4180, 2018
<https://doi.org/10.5194/bg-15-4163-2018-supplement>
© Author(s) 2018. This work is distributed under
the Creative Commons Attribution 4.0 License.



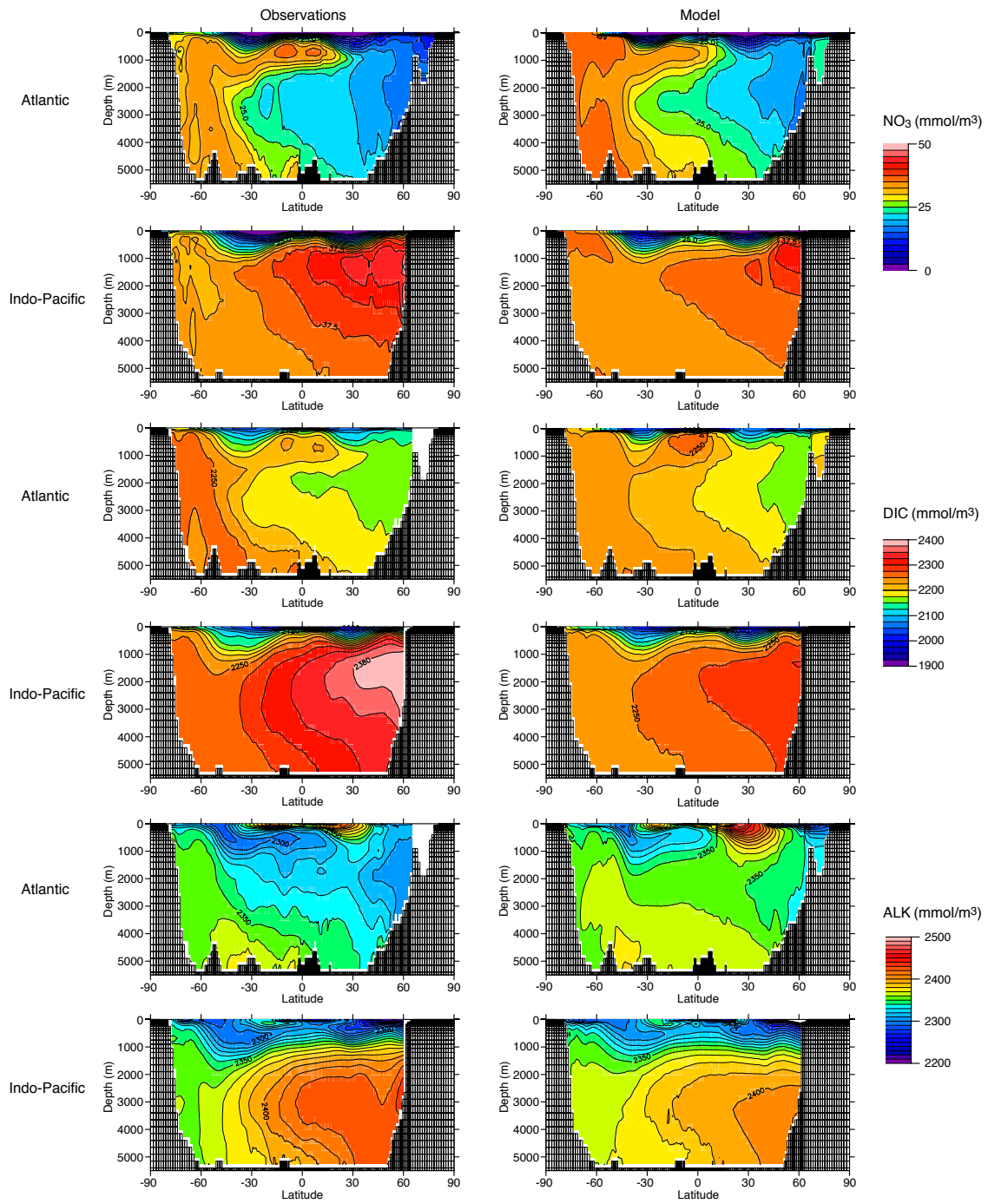
Supplement of

Long-term response of oceanic carbon uptake to global warming via physical and biological pumps

Akitomo Yamamoto et al.

Correspondence to: Akitomo Yamamoto (akitomo@jamstec.go.jp)

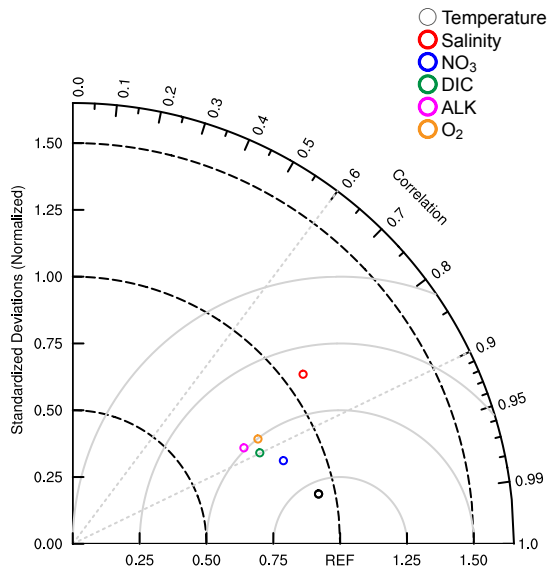
The copyright of individual parts of the supplement might differ from the CC BY 4.0 License.



1

2 **Figure S1.** Zonal distribution of nitrate (NO_3), dissolved inorganic carbon (DIC) and
 3 alkalinity (ALK) for the Atlantic and Indo-Pacific Ocean in the observation (left) and
 4 model (right).

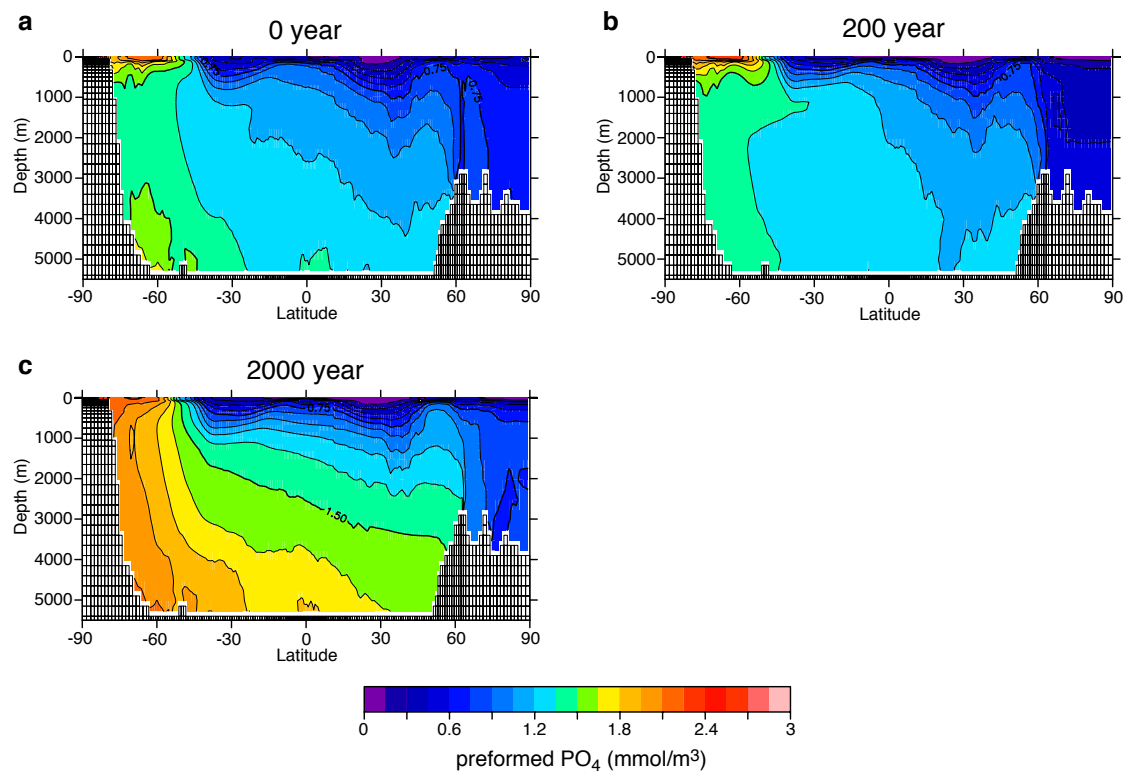
5



6

7 **Figure S2.** Physical and biogeochemical variables in the pre-industrial experiments are
 8 compared with observational datasets in a Taylor diagram (Taylor, 2001).

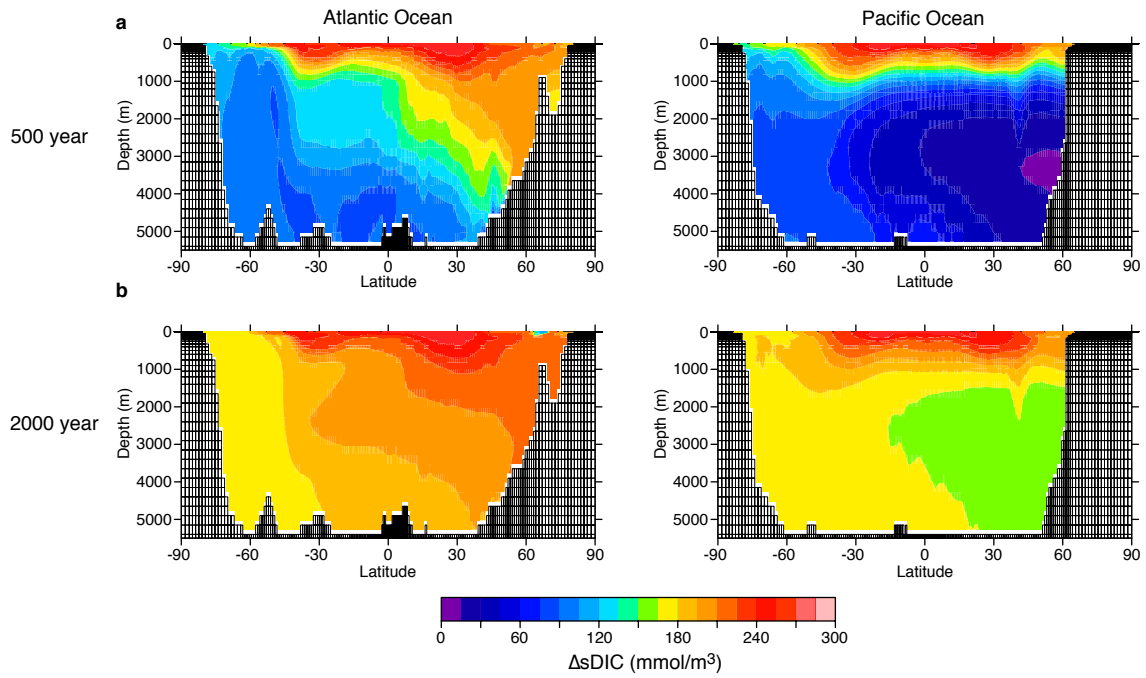
9



10

11 **Figure S3.** Zonal mean distribution of preformed PO₄ for (a) 0 years, (b) 200 years and
 12 (c) 2000 years in GW_{bio}.

13

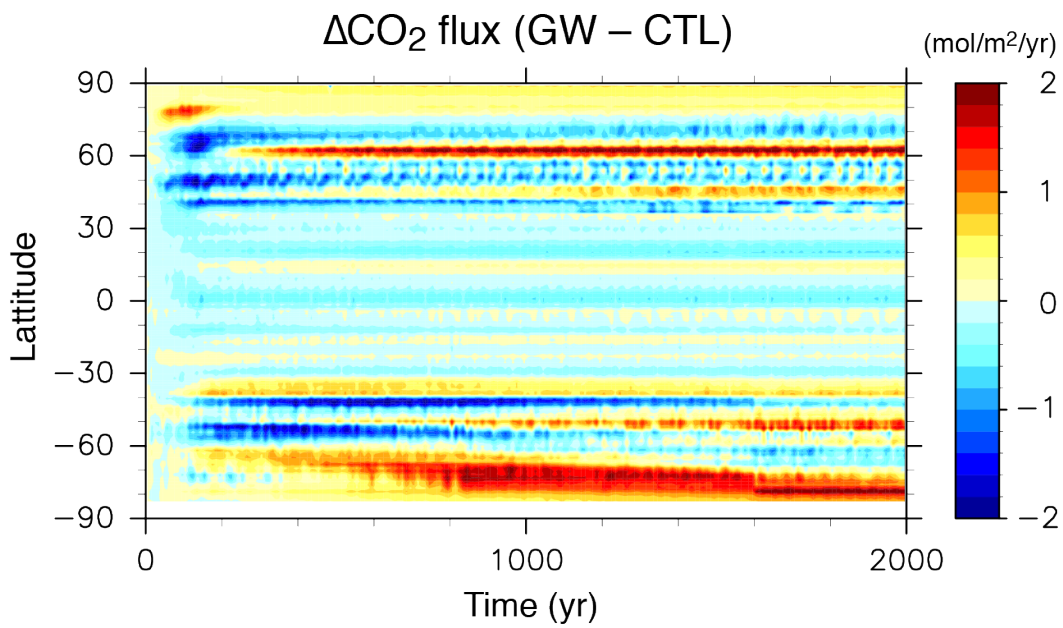


14

15 **Figure S4.** Zonal mean distribution of changes in the salinity-normalized DIC for (a)

16 500 years and (b) 2000 years in the constant-climate run (CTL_bio). The left and right

17 panels show the Atlantic and Indo-Pacific Oceans, respectively.



18

19 **Figure S5.** Hovmöller diagram of the CO₂ uptake anomaly of GW_bio – CTL_bio.

20