

Title	Microscopic mechanism of biphasic interface relaxation in lithium iron phosphate after delithiation
Author(s)	Kobayashi, Shunsuke; Kuwabara, Akihide; Fisher, Craig A. J.; Ukyo, Yoshio; Ikuhara, Yuichi
Citation	Nature Communications (2018), 9
Issue Date	2018-07-20
URL	http://hdl.handle.net/2433/234229
Right	© The Author(s) 2018. This article is licensed under a Creative Commons Attribution 4.0 International License, which permits use, sharing, adaptation, distribution and reproduction in any medium or format, as long as you give appropriate credit to the original author(s) and the source, provide a link to the Creative Commons license, and indicate if changes were made. The images or other third party material in this article are included in the article 's Creative Commons license, unless indicated otherwise in a credit line to the material. If material is not included in the article 's Creative Commons license and your intended use is not permitted by statutory regulation or exceeds the permitted use, you will need to obtain permission directly from the copyright holder. To view a copy of this license, visit http://creativecommons.org/licenses/by/4.0/ .
Type	Journal Article
Textversion	publisher

ARTICLE

DOI: 10.1038/s41467-018-05241-1

OPEN

Microscopic mechanism of biphasic interface relaxation in lithium iron phosphate after delithiation

Shunsuke Kobayashi ¹, Akihide Kuwabara ¹, Craig A.J. Fisher¹, Yoshio Ukyo^{1,2} & Yuichi Ikuhara^{1,3}

Charge/discharge of lithium-ion battery cathode material LiFePO_4 is mediated by the structure and properties of the interface between delithiated and lithiated phases. Direct observations of the interface in a partially delithiated single crystal as a function of time using scanning transmission electron microscopy and electron energy-loss spectroscopy help clarify these complex phenomena. At the nano-scale, the interface comprises a thin multi-phase layer whose composition varies monotonically between those of the two end-member phases. After partial delithiation, the interface does not remain static, but changes gradually in terms of orientation, morphology and position, as Li ions from the crystal bulk diffuse back into the delithiated regions. First-principles calculations of a monoclinic crystal of composition $\text{Li}_{2/3}\text{FePO}_4$ suggest that the interface exhibits higher electronic conductivity than either of the end-member phases. These observations highlight the importance of the interface in enabling LiFePO_4 particles to retain structural integrity during high-rate charging and discharging.

¹Nanostructures Research Laboratory, Japan Fine Ceramics Center, Atsuta, Nagoya 456-8587, Japan. ²Office of Society-Academia Collaboration for Innovation, Kyoto University, Uji, Kyoto 611-0011, Japan. ³Institute of Engineering Innovation, The University of Tokyo, Bunkyo, Tokyo 113-8656, Japan. Correspondence and requests for materials should be addressed to S.K. (email: s_kobayashi@jfcc.or.jp) or to Y.I. (email: ikuhara@sigma.t.u-tokyo.ac.jp)

Improving the charge performance of Li-ion batteries for a wide spectrum of applications from mobile devices to electric vehicles is a major goal of contemporary materials research. Charge performance is typically limited by the rate of charge/discharge that can be sustained by the positive electrode without serious degradation over many battery cycles, so the development of structurally and chemically stable positive electrode materials is crucial for achieving this goal. Olivine-structured lithium iron phosphate, LiFePO_4 , first reported in 1997 by Goodenough and coworkers¹, is a positive electrode material with good stability and cyclability that continues to be intensively studied^{2–5}. Nano-sizing⁶ and carbon-coating^{7,8} are well-established techniques for overcoming the poor intrinsic electronic and ionic conductivities of LiFePO_4 ⁹, but to improve its performance further requires better understanding of lithium (de)intercalation and related mechanisms at the atomic level; because these processes normally occur via a two-phase reaction in olivine-structured LiFePO_4 , this necessarily includes examining the interface between the lithiated (Li-rich; $\text{Li}_{1-\alpha}\text{FePO}_4$, $\alpha < 0.2$) and delithiated (Li-poor; $\text{Li}_\beta\text{FePO}_4$, $\beta < 0.2$) phases within particles as charging/discharging proceeds.

Recent studies have confirmed that a metastable phase with intermediate Li content forms between Li-rich and Li-poor phases when the material is charged under far-from-equilibrium conditions^{10,11} or at high-charging rates^{12,13}. Both end-member phases have olivine-type crystal structures belonging to orthorhombic space group $Pnma$, although there is considerable lattice mismatch between them because of the large volume contraction when Li is removed from the crystal¹⁴. Formation of an intermediate phase is thought to reduce the excessive lattice strain that would otherwise exist if the end-member phases met at an atomically abrupt interface. This intermediate phase has been investigated recently using theoretical^{15–17} and experimental^{11–13,18–20} approaches, but many aspects remain unknown.

Two powerful methods for investigating the local interface structure and morphologies of complex crystalline systems are scanning transmission electron microscopy (STEM)^{21–27} and

electron energy-loss spectroscopy (EELS)^{28–30}. In this study, we have used these techniques to examine LiFePO_4 in different states of delithiation at the atomic and nano-scales to gain a better understanding of the structure, chemistry and dynamics of biphasic boundaries. Because the (010) surface of LiFePO_4 is perpendicular to the main Li-ion migration pathway in the olivine structure, it is considered to be the most pertinent in terms of electrochemical behaviour^{31,32}, and this is the surface that we focus on here. Previous reports showed that microcracks form parallel to the (100) plane in LiFePO_4 particles during delithiation³³, so observation down the [001] zone axis (parallel to any cracks and perpendicular to the direction of Li migration) provides an unobstructed view of the biphasic boundary formed by delithiation from (010) surfaces.

In this study, a pristine (001) surface is prepared by cleaving a large (millimetre-size) single crystal. STEM observations confirmed it to be atomically flat over a wide area³⁴, as shown in Supplementary Note 1 and Supplementary Fig. 1, making it an excellent model for examining fundamental structural and chemical features of LiFePO_4 both before and after delithiation. Detailed STEM and EELS observations of the interface between $\text{Li}_{1-\alpha}\text{FePO}_4$ and $\text{Li}_\beta\text{FePO}_4$ phases at different times after chemical delithiation of this surface reveal that LiFePO_4 comprises a thin multiphase layer that does not remain static but relaxes gradually outwards to the crystal surface as Li ions diffuse from the crystal bulk back into the delithiated regions. First-principles calculations of a monoclinic crystal of composition $\text{Li}_{2/3}\text{FePO}_4$ suggest that the intermediate phases comprising the interface exhibit higher electronic conductivity than the end-member phases. The findings not only offer fresh insights into the role of the interface layer but also have implications for the development of olivine-type cathode materials and other topotactic materials.

Results

Morphology of the boundary between LiFePO_4 and FePO_4 .

Figure 1a, b shows low-magnification bright-field (BF) STEM

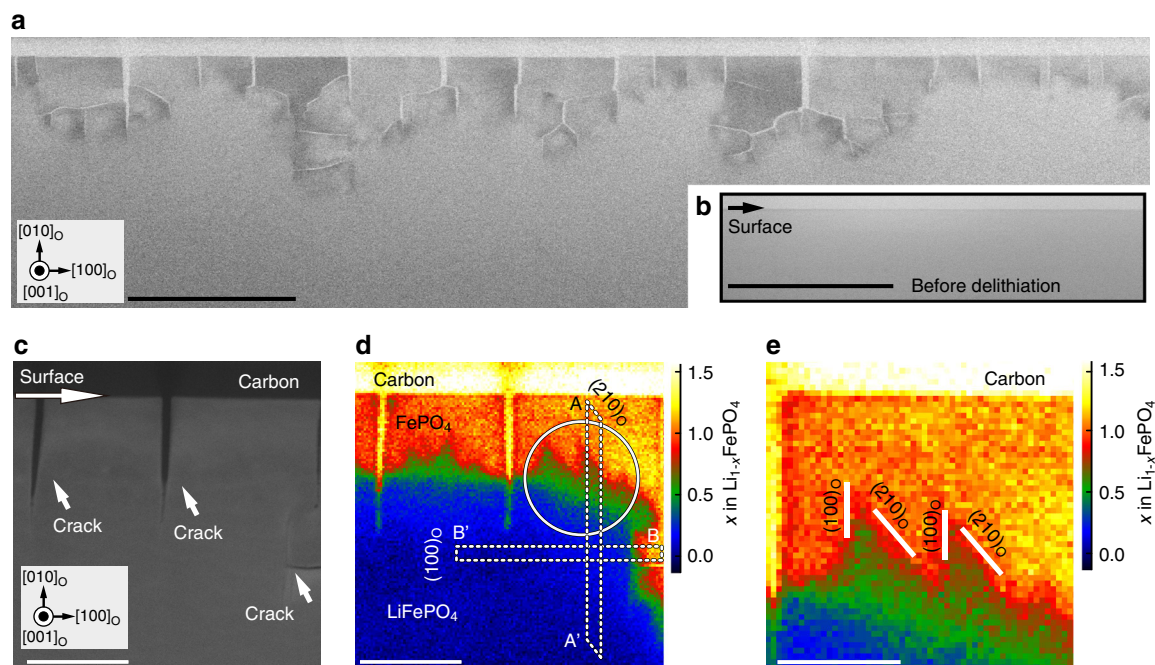


Fig. 1 Boundary region between LiFePO_4 and FePO_4 after chemical delithiation. **a, b** Low-magnification BF STEM images of a (010) surface (**a**) after and (**b**) before delithiation. Subscript “o” refers to the orthorhombic structure. Scale bar, 500 nm. **c** ADF STEM image of a section of the surface in **a**. Scale bar, 100 nm. **d** Li concentration map from the same region as **c**. Scale bar, 100 nm. **e** Magnified Li concentration map of circled region in **d**. Scale bar, 50 nm

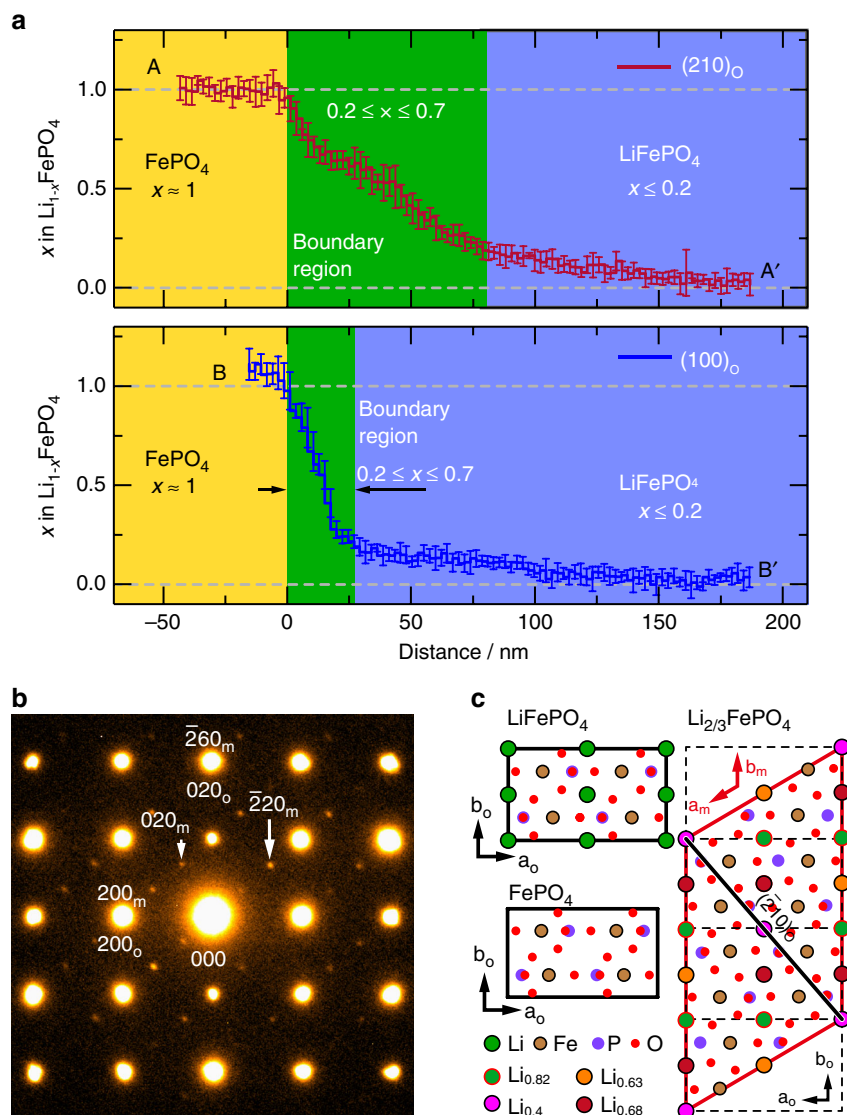


Fig. 2 Boundary region between LiFePO_4 and FePO_4 after chemical delithiation. **a** Li concentration profiles along cross sections bounded by white dashed boxes in Fig. 1d. **b** Electron diffraction pattern obtained from the circled region in Fig. 1d. **c** Crystal models of $\text{Li}_{1-x}\text{FePO}_4$ for $x \approx 1$ and 0.34 (the model for $x \approx 0.34$ is based on that reported in ref. 11). Subscripts “o” and “m” refer to orthorhombic and monoclinic structures, respectively

images of the (010) surface after and before chemical delithiation, respectively. After delithiation, several microcracks formed parallel to the (100) plane in response to the strain induced by large differences in molar volume between delithiated and lithiated phases^{25,35}. In some places, secondary cracks also formed parallel to the (010) surface from within the main microcracks, with further branching taking place deeper in the crystal. The cracks from the (010) surface extended to a depth of around 100 nm before radiating in other directions, suggesting that preparing particles with diameters smaller than this may be one way of suppressing microcrack formation and increasing the cycle lifetime of LiFePO_4 positive electrodes⁶.

To determine the spatial distribution of Li ions in the crystal after chemical delithiation, we carried out quantitative valence EELS analysis. The intensity of the strong peak between 3 and 8 eV in the case of FePO_4 (Supplementary Fig. 2) is attributable to interband transitions from states at the top of the valence band, and is closely related to the local valence state of Fe ions^{29,36}. Fe valence states can be related to the Li content according to the formula $\text{Li}_{1-x}\text{Fe}_{1-x}^{2+}\text{Fe}_x^{3+}\text{PO}_4$, so measuring the intensity of the strong peak allows the local Li concentration to be

estimated (Supplementary Fig. 3). Details of this method have been reported elsewhere³⁰, and a brief summary is provided in Supplementary Note 2.

Figure 1d shows an Li concentration map of the area in Fig. 1c. Dark blue corresponds to Li-rich regions ($x < 0.2$) and orange–yellow to delithiated regions ($x \approx 1$). The brightest region (with $x > 1.1$ according to the intensity scale bar) is amorphous carbon, which exhibits a strong peak corresponding to the π plasmon resonance (Supplementary Fig. 2b). The boundary between FePO_4 ($x \approx 1$) and $\text{Li}_{1-x}\text{FePO}_4$ ($x < 0.2$) phases is readily distinguishable, with contrast levels between those of the Li-rich and Li-poor phases. The pseudo-orthorhombic lattice parameters for the boundary region are also intermediate between those of the end-member phases, as confirmed by electron diffraction (see Supplementary Note 3 and Supplementary Fig. 4).

A magnified view of the top-right region of Fig. 1d is shown in Fig. 1e. This reveals that the interface between the Li-poor phase and boundary or interphase layer is demarcated by more-or-less well-defined crystal layers parallel to $(100)_o$ and $(210)_o$ planes, as seen in Fig. 1e, where subscript ‘o’ refers to the orthorhombic structure. Boundaries parallel to $(310)_o$, $(110)_o$ and $(010)_o$ were

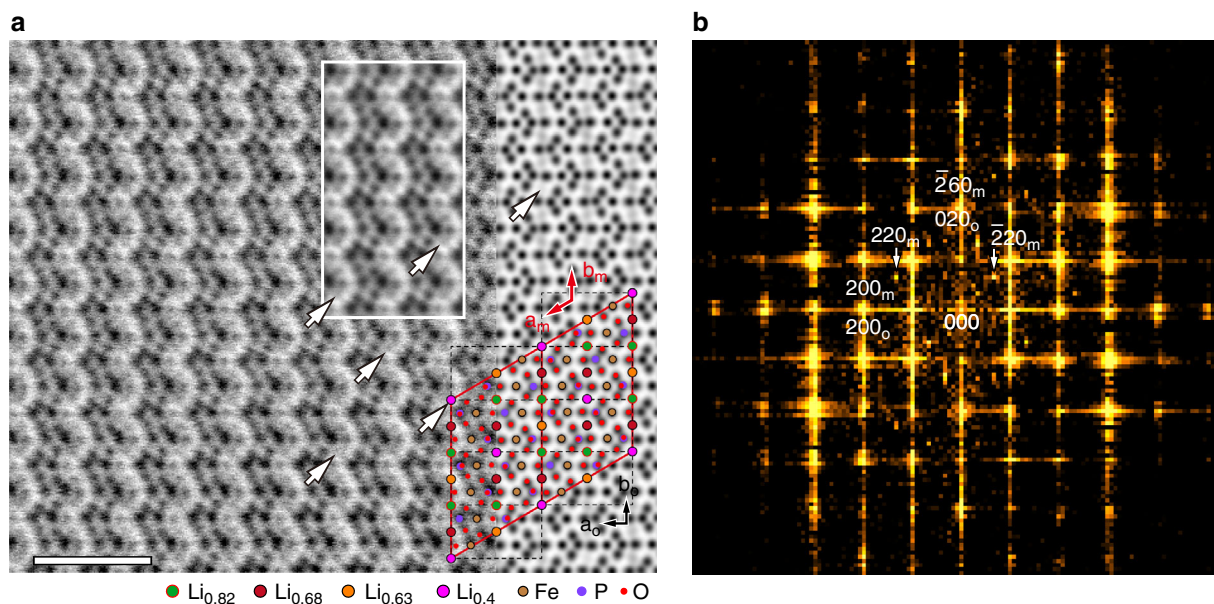


Fig. 3 Direct observation of a monoclinic phase with Li vacancy ordering. **a** ABF STEM image of the monoclinic phase identified by electron diffraction taken down the $[001]_o$ zone axis (left) compared with a simulated image calculated using the monoclinic unit cell of $\text{Li}_{2/3}\text{FePO}_4$ (right). Scale bar, 1 nm. The white rectangle shows an integrated ABF STEM image generated by summing intensities from different areas of the monoclinic phase. White arrows indicate positions of Li-poor columns corresponding to Li sites of occupancy 0.4 in the (overlaid) model of monoclinic $\text{Li}_{2/3}\text{FePO}_4$. **b** Two-dimensional Fourier transform of the left-hand image in **a**. hkl_o and hkl_m denote indices of spectral frequencies for simple orthorhombic and monoclinic unit cells, respectively

also observed in some places (Supplementary Fig. 5). In contrast, there are no well-defined interfaces between the boundary layer and Li-rich phase. The interface between the lithiated phase and boundary layer thus comprises a gradual transition in Li content, whereas the interface between delithiated phase and boundary layer corresponds to a more abrupt or discrete change in Li content.

Monoclinic subphase within the boundary layer. Figure 2a shows Li concentration profiles obtained by averaging seven line scans across the regions enclosed by elongated, dashed boxes in Fig. 1d, one oriented perpendicular to the direction of facile Li-ion diffusion (i.e., perpendicular to $(100)_o$) and the other parallel to it (i.e., perpendicular to $(010)_o$), with the ends inclined parallel to a $(210)_o$ segment of the interface. Error bars show the standard deviations. The Li vacancy concentration perpendicular to $(010)_o$ drops most steeply from $x \approx 1$ to $x \approx 0.7$ across the FePO_4 /interphase interface, and then gradually decreases across the boundary layer up to the interface with the Li-rich phase. The width of the boundary layer, with Li concentrations between 0.7 and 0.2, is about 70 nm at this location. The width in the $[100]_o$ direction is considerably narrower, at about 20 nm. The boundary width thus appears to vary with facet orientation, most likely because of anisotropy in the lattice mismatch strains. For example, lattice mismatch between the delithiated and lithiated phases along $[100]_o$ is about 3.6%, compared with 5.0% along $[010]_o$ and 4.7% along $[210]_o$. The differences in boundary width can thus be rationalised in terms of lattice mismatch; the larger the mismatch, the thicker the boundary region needed to reduce lattice strain between the two end-member phases.

The electron diffraction pattern in Fig. 2b was obtained from the region spanning the Li-rich/Li-poor boundary enclosed by the white circle in Fig. 1d. Extra spots (indicated by white arrows) not present in the patterns of FePO_4 or LiFePO_4 appear, corresponding to a monoclinic structure (Supplementary Fig. 6). One candidate phase for the intermediate layer is $\text{Li}_{2/3}\text{FePO}_4$, belonging to monoclinic space group $P2_1/n$, as first reported by

Boucher et al.¹⁰ and examined in more detail by Nishimura et al.¹¹. The structure contains Li-poor and Li-rich atom columns ordered in the manner shown in Fig. 2c.

Figure 3a shows an atomic-scale image of the monoclinic subphase within the boundary layer obtained in annular bright-field (ABF) mode together with a simulated ABF image of the monoclinic $\text{Li}_{2/3}\text{FePO}_4$ structure. Dark spots in both images correspond to atom columns. The advantage of ABF imaging over high angle annular dark-field (HAADF) imaging is that the former enables atom columns of light elements such as oxygen and lithium to be observed simultaneously with those of heavier elements^{21,22,27}. When vacancies are present in particular columns, the columns become brighter than those of columns with fully occupied sites²⁷, and the greater the brightness the greater the concentration of vacancies. In Fig. 3a, there is only a slight difference in contrast between Li-poor and Li-rich columns in the experimental and simulated images, consistent with their site occupancies only being moderately different (from 0.4 to 0.8).

A two-dimensional Fourier transform of the experimental ABF image in Fig. 3a is shown in Fig. 3b. Spectral frequencies related to a monoclinic phase, specifically 220_m and $\bar{2}20_m$, are clearly visible. The inset in Fig. 3a shows an ABF-STEM image produced by integrating the intensities of different areas of the boundary region, each the size of a monoclinic unit cell. Line profiles of the inset image reveal an ordering of Li-poor columns (Supplementary Note 4 and Supplementary Fig. 7) in agreement with the profile calculated using the monoclinic structure model in Fig. 2c. The results of the Fourier transform and the average intensity profile thus confirm that the boundary region contains a monoclinic subphase with composition close to $\text{Li}_{2/3}\text{FePO}_4$. The lattice coherency, compositional gradient and absence of further additional spots in the Fourier-transformed images suggest that the rest of the boundary region consists of olivine-structured crystal with orthorhombic symmetry and randomly distributed Li vacancies.

To examine the distribution of the monoclinic subphase within the boundary region, data were extracted from the BF STEM images

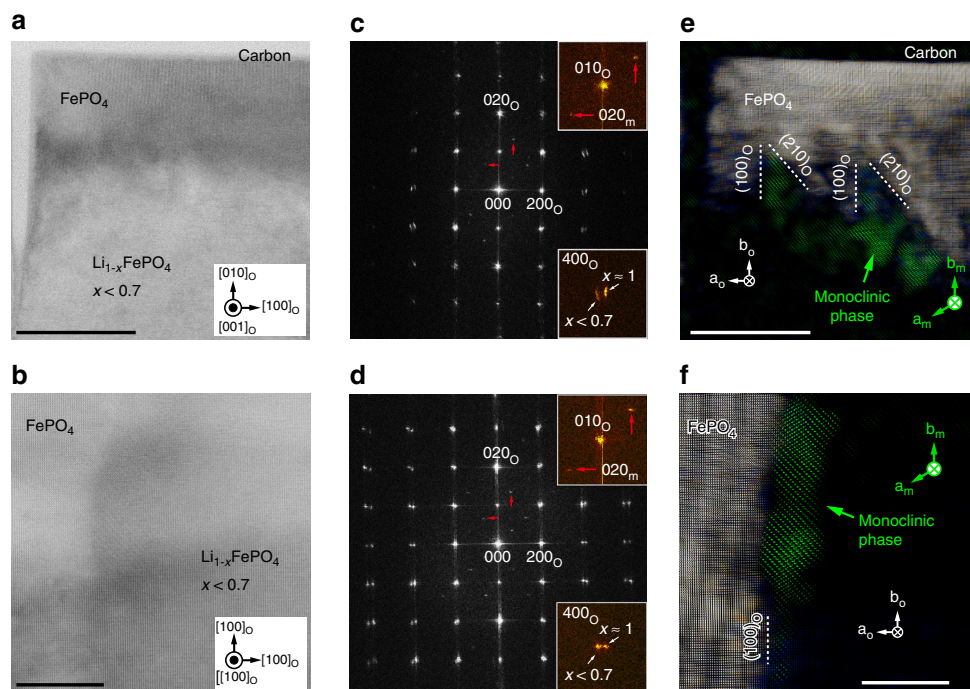


Fig. 4 Distribution of the monoclinic phase in the boundary layer. **a, b** A BF STEM images of the region in Fig. 1c, and a boundary layer parallel to $(100)_o$, respectively. Scale bars, 50 and 20 nm, respectively. **c, d** Two-dimensional Fourier transforms of the images in **a, b**, respectively. **e** A composite image comprising images of the Li-poor (Supplementary Fig. 8d) and monoclinic (Supplementary Fig. 8f) phases in **a** showing the local distribution of the monoclinic phase in the boundary near a vertical crack. Scale bar, 50 nm. **f** A composite image comprising images of the Li-poor and monoclinic phases in **b** prepared in the same manner as **e**. Scale bar, 20 nm. hkl_o and hkl_m denote indices of spectral frequencies for simple orthorhombic and monoclinic unit cells, respectively

of Fig. 4a, b using a two-dimensional Fourier transform technique³⁷. Figure 4c, d shows two-dimensional Fourier transforms of Fig. 4a, b, respectively. Spectral frequencies related to Li-poor ($x \approx 1$), Li-rich ($x < 0.7$) and monoclinic phases are readily distinguished, making it possible to extract data from each phase separately. Details are provided in Supplementary Note 5 and Supplementary Figs. 8 and Fig. 9. Figure 4e, f shows composite images of Li-poor and monoclinic phase images extracted from the Fourier transforms in 4c and 4d, respectively. The monoclinic phase can be seen to form closer to the FePO_4 phase, with well-aligned facets (Fig. 4e, f), than to the LiFePO_4 phase, even though its Li content is relatively high (0.67). In the non-monoclinic regions of the boundary layer, the Li content was found to vary between $x \approx 0.3$ and $x \approx 0.7$, with no noticeable ordering of Li vacancies.

To investigate the monoclinic subphase in more detail, we performed density functional theory calculations using a simplified model of experimentally observed $\text{Li}_{2/3}\text{FePO}_4$ (Supplementary Fig. 10). Details of the model are provided in Supplementary Note 6. The band gap of monoclinic $\text{Li}_{2/3}\text{FePO}_4$ was calculated to be 1.0 eV, considerably less than that of LiFePO_4 at 3.6 eV and FePO_4 at 1.9 eV, but consistent with that calculated by Ong et al.³⁸ for an isolated hole polaron in LiFePO_4 . Plots of the partial densities of states reveal that the narrow band gap is a result of the high concentration of hole polarons associated with Fe^{3+} ions forming a low-energy conduction band (Supplementary Figs. 11 and 12). As electronic conduction within $\text{LiFePO}_4/\text{FePO}_4$ is known to occur by polaron hopping^{9,38}, this can explain the higher electronic conductivities reported for the solid-solution (metastable) phase. During fast charging/discharging or under far-from-equilibrium conditions, the volume of the intermediate phase can also extend to the surface of the particle³⁹, and its higher electronic conductivity (relative to the two end-member phases) is thought

to play an important role in facilitating charge transfer during Li intercalation and deintercalation.

Migration of the $\text{FePO}_4/\text{LiFePO}_4$ phase boundary during crystal relaxation. After partial delithiation, the biphasic interface is not static but exhibits gradual structural relaxation as a result of reverse Li-ion migration from the crystal bulk back to the surface. This occurs topotactically because the boundary region enables the crystal lattices of the two main phases to remain connected coherently and thus the $[010]_o$ Li-ion channels remain intact. As this process proceeds, the crystal expands back to its original volume, reducing the volume of the Li-poor phase and eventually closing cracks that formed at the delithiated surface.

The observed changes taking place at the biphasic interface during this relaxation/healing process provide insights into the mechanism by which Li migrates between the Li-rich and Li-poor phases. Figure 5a shows an ADF STEM image of a region spanning the boundary region soon after Li removal. Li concentrations were also mapped from the same region at several different times between 11.5 h and >4000 h after oxidation, and the results are shown in Fig. 5b–h. (The same results plotted as Li concentration gradation maps are provided as Supplementary Fig. 13.) Figure 5i shows a map of relative thickness t/λ for the area in Fig. 5h. As the mean free path, λ , of stoichiometric LiFePO_4 is 106.3 nm, the map shows that the thickness of the relaxed structure varied from around 50 nm near the surface to 80 nm inside the crystal.

Between 11.5 and 79 h (Fig. 5b–d), the Li ions can be seen to have migrated in the $[010]$ direction from the LiFePO_4 crystal bulk back to FePO_4 surface regions. In some places, lateral cracks parallel to the (010) surface physically separated

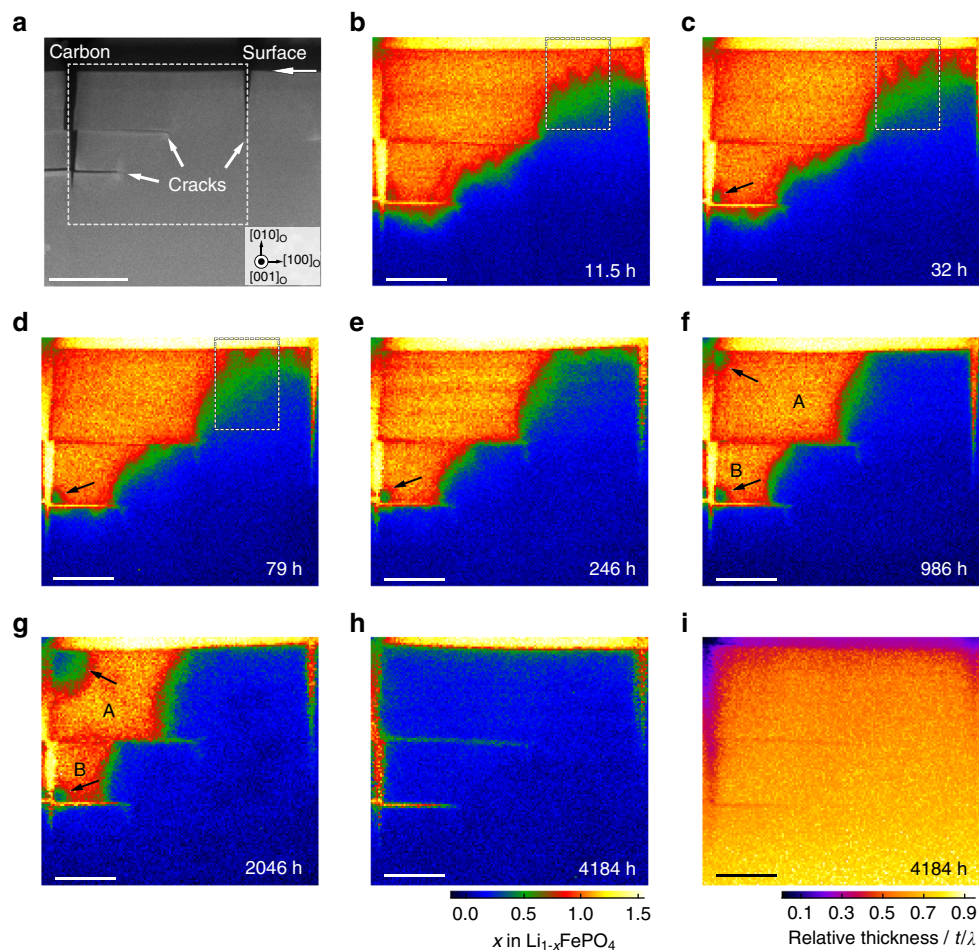


Fig. 5 Migration of the $\text{FePO}_4/\text{LiFePO}_4$ phase boundary. **a** ADF STEM image after delithiation showing cracks perpendicular and parallel to the (010) surface. Scale bar, 200 nm. **b–h** Li concentration maps of the region bounded by the white dashed rectangle in **a** obtained (**b**) 11.5 h, (**c**) 32 h, (**d**) 79 h, (**e**) 246 h, (**f**) 986 h, (**g**) 2046 h and (**h**) 4184 h after delithiation. Scale bar, 100 nm. The colour scale bar below **h** shows colour changes as a function of x for maps **b–h**. Black arrows in **c–g** indicate corner regions to which Li ions returned by external diffusion to form a separate region of intermediate Li content. **i** Map of relative thickness t/λ taken at the same time as **h**. Scale bar, 100 nm. The colour scale bar below **i** shows colour changes as a function of t/λ .

delithiated regions from the crystal bulk in the [010] direction, as seen in Fig. 5e. In these cases, Li ions were unable to migrate back to the separated areas along the main transport paths, viz., [010] channels.

Between 246 and 2046 h after delithiation (Fig. 5e–g), Li ions can also be seen to have migrated progressively from the LiFePO_4 region to the FePO_4 regions in the [100]_o direction. As the overall interface becomes aligned with the (100)_o plane, the width of the intermediate layer decreases, as does the width of region A, most readily seen in Fig. 5f, g. Interestingly, of the two main FePO_4 regions, A decreases in size more rapidly than B. This may be because the larger region (A) produces a larger strain field, providing a larger driving force for Li to relax back into the delithiated region. As seen in Fig. 5h, after a long period of time (over 5 months), both regions had almost completely re-lithiated, despite being separated from the crystal bulk in the [010] direction. According to the gradation map in Supplementary Fig. 13h, the residual Li vacancy concentration at the surface was between 10 and 30%.

In addition to relaxation of Li back into the delithiated regions from the bulk crystal in [010] and [100] directions, Fig. 5f, g reveal that intermediate phases also formed at corners of some cracks (e.g., regions indicated by black arrows in Fig. 5g). These regions also contained the monoclinic phase

(Supplementary Note 7 and Supplementary Fig. 14). As electron beam damage and sample thickness effects can be discounted as the cause of this phenomenon (more details are provided in Supplementary Note 7 and Supplementary Fig. 15), it appears that Li ions have migrated around the surfaces and re-entered the crystal at the edges, which are regions of high stress concentration.

The Li concentration maps also reveal that the orientations of facet planes between the boundary region and delithiated phase vary as a function of time; although, the interface retains a jagged morphology whenever it is present. Figure 6a shows magnified views of Li concentration maps of the region within the dotted rectangles in Fig. 5 11.5 h, 32 h and 79 h after delithiation. Superimposed binarised images in Fig. 6b divided into “ FePO_4 ” (Li concentrations between 0.0 and 0.25 moles per formula unit) and “non- FePO_4 ” (Li concentrations greater than 0.75 moles per formula unit) regions show how the area of the FePO_4 phase decreases with increasing relaxation time. Figure 6a, b show that facets of the FePO_4 /boundary layer interface after 11.5 h are parallel to (110)_o, (210)_o and (100)_o planes. As relaxation continued, a succession of changes in facet orientation occurred, as indicated by red arrows, with many (110)_o oriented interfaces changing to (210)_o, and (210)_o interfaces changing first to (310)_o and then back to (210)_o,

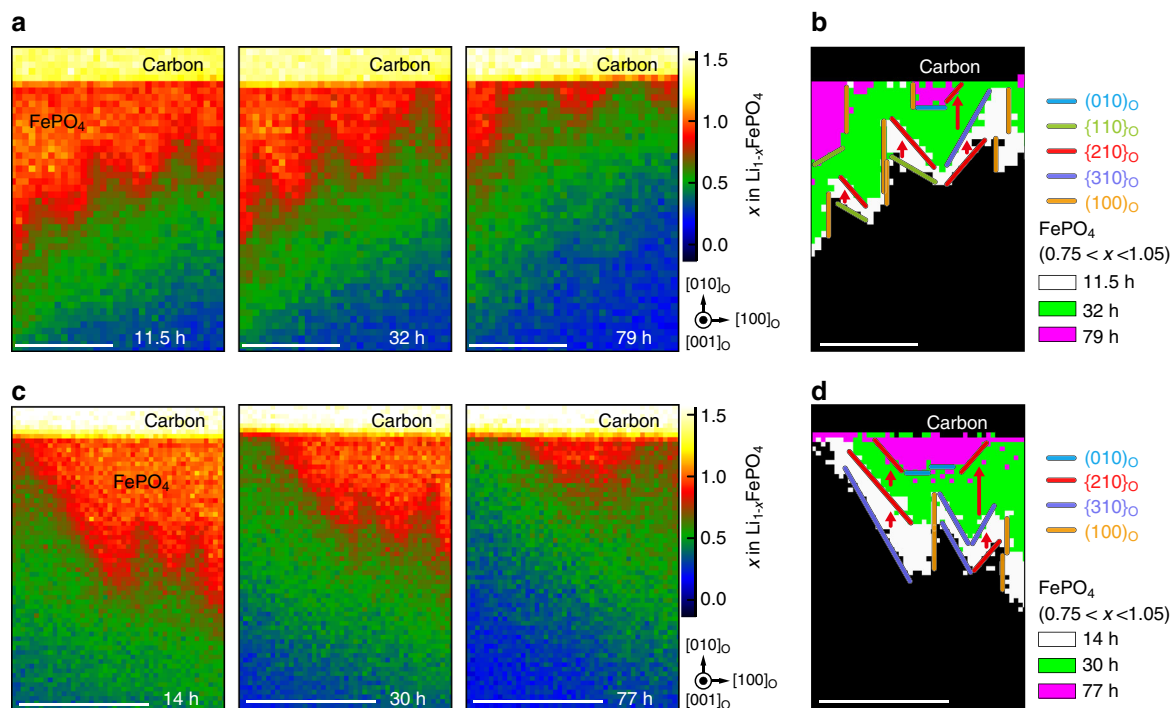


Fig. 6 Changes in boundary planes between FePO₄ and the intermediate region during relaxation. **a** Magnified view of the Li concentration map of the region enclosed by the dotted rectangles in Fig. 5b–d (from left to right) 11.5, 32 and 79 h after delithiation. **b** Superimposed binarised images of the region in **a** 11.5 h (white), 32 h (green) and 79 h (magenta) after delithiation. **c** Magnified view of the Li concentration map of the region enclosed by the dotted rectangle in Supplementary Fig. 4 (from left to right) 14, 30 and 77 h after delithiation. **d** Superimposed binarised images of the region in **c** 14 h (white), 30 h (green) and 77 h (magenta) after delithiation. In the binarised images, “FePO₄” was taken to correspond to Li vacancy concentrations between 0.75 and 1.05. Scale bar, 50 nm

accompanied by formation of narrow (010)_o facets. Facets at other portions of the boundary layer after 14 h were parallel to (210)_o, (310)_o and (100)_o planes, as seen in Fig. 6c, d. In this case, (310)_o interfaces changed to (210)_o, and (210)_o to (310)_o and then back to (210)_o as time proceeded. In other words, as structural relaxation progressed, many boundary facets tended to align with (h10)_o planes with higher *h* values, eventually becoming parallel to planes with *h* → ∞, i.e., {100}_o planes. At the same time, Fig. 6 shows that some higher index facets changed to lower index facets, including some parallel to {010}_o, i.e., with *h* ≈ 0. The {010}_o oriented facets were observed to occur in regions where the size of the FePO₄ region was small, suggesting that low-index planes such as {010}_o are stable in smaller strain fields. Although beyond the scope of this work, to elucidate completely the dynamics of changes from high-index to low-index facets, the effect of both Li-ion migration rates and the complex misfit strain fields surrounding the jagged interface morphology need to be examined in detail.

Observation of changes in the crystal morphology and local composition also provided insights into the relaxation process after partial delithiation on a larger scale. The main microcracks formed mainly parallel to the (100) plane (see Supplementary Figs. 1c and 1d), consistent with the misfit strain along [001]_o being the smallest of those along the principal axis directions. Calculation of a simplified lattice mismatch, $\varepsilon_{\langle hkl \rangle}$, defined as $\varepsilon_{\langle hkl \rangle} = (d_{\langle hkl \rangle}^R - d_{\langle hkl \rangle}^P) / d_{\langle hkl \rangle}^R$ (where $d_{\langle hkl \rangle}^R$ is the *d*-spacing along $\langle hkl \rangle$ directions of the Li-rich phase, and $d_{\langle hkl \rangle}^P$ is the *d*-spacing along $\langle hkl \rangle$ directions of the Li-poor phase), gives values of $\varepsilon_{\langle 001 \rangle}$ for interfaces LiFePO₄/FePO₄ and Li_{2/3}FePO₄/FePO₄ of −1.9% and −1.0%, respectively^{11,14}. These misfit values are consistent with the overall trends, but a detailed explanation of the observed interfaces between the three phases

requires closer analysis of the effect of crystal anisotropy on misfit strain.

Pseudo-orthorhombic lattice parameters of the Li_{2/3}FePO₄ phase have been reported to be $a_o = 0.5935$ nm and $b_o = 1.0202$ nm¹¹. Using these values, misfit strains $\varepsilon_{\langle 010 \rangle}$, $\varepsilon_{\langle 110 \rangle}$, $\varepsilon_{\langle 210 \rangle}$, $\varepsilon_{\langle 310 \rangle}$ and $\varepsilon_{\langle 100 \rangle}$ between Li_{2/3}FePO₄ and FePO₄ ($a_o = 0.5789$ nm and $b_o = 0.9814$ nm) are calculated to be 3.80, 3.75, 3.25, 3.08 and 2.47%, respectively, showing that higher index lattice planes have smaller lattice mismatch. Values of $\varepsilon_{\langle hkl \rangle}$ between LiFePO₄ and Li_{2/3}FePO₄ along the same directions are all <2%, suggesting that a small lattice mismatch results in a diffuse interface, in this case perpendicular to [010], as seen in Fig. 1. The observation of diffuse interfaces is in good agreement with a recent synchrotron microbeam diffraction study²⁰. In contrast, the large lattice mismatch in the [010] direction between FePO₄ and Li_{2/3}FePO₄, coupled with this being the fastest direction for Li-ion migration, produces sharp, well-defined boundaries on the FePO₄ side of the boundary layer. The range of Li concentrations across the boundary region between the Li-poor and Li-rich phases suggests that local misfit strain is indeed able to alter the relative stabilities of Li_xFePO₄ phases, as predicted by simulation¹⁷.

Discussion

Our STEM observations and EELS measurements reveal how the delithiated surface region of an LiFePO₄ crystal relaxes as a function of time to return to an essentially monophasic state when a comparatively small amount of Li has been removed. The driving force for Li-ion migration into delithiated regions in this case is the large chemical potential difference between the two main phases, together with the lattice strain field that exists across the boundary layer. Further details are provided in

Suplementary Note 8 and Supplementary Figs. 16 and 17. The strain field has been reported to extend to about 10–25 nm⁴⁰, consistent with the more-or-less constant width of the boundary region during the relaxation process until it disappears upon reaching the crystal surface.

The room-temperature self-diffusion coefficient of Li in FePO₄ in the [010] direction was estimated directly from the rate of shrinkage of the delithiated regions in the binarised images in Fig. 6 to be $4.1 \times 10^{-17} \text{ cm}^2 \text{ s}^{-1}$. Similarly, the diffusion coefficient in the [100] direction was estimated from regions A and B in Fig. 5 to be $3.2 \times 10^{-18} \text{ cm}^2 \text{ s}^{-1}$ and $9.2 \times 10^{-19} \text{ cm}^2 \text{ s}^{-1}$, respectively, indicating that the magnitude of the Li diffusion coefficient is related to the strain field, and that Li diffusion in the [010] direction is at least an order of magnitude faster than in the [100] direction^{31,32}. Previous experimental studies^{41–45} reported Li diffusion coefficients between 10^{-17} and $10^{-9} \text{ cm}^2 \text{ s}^{-1}$. The wide scatter in these values is not unexpected given the different measurement methods used. In particular, concentrations of antisite defects, which are known to hamper Li diffusion^{23,46}, depend on the method and conditions used during synthesis. Although our estimates of the diffusion coefficient have large uncertainties, as far as we are aware this is the first time that such calculations have been made by directly measuring the migration of the biphasic boundary with time.

Our observations of chemically delithiated (010) surfaces of LiFePO₄ are consistent with a Li-poor shell/Li-rich core model, in excellent agreement with earlier electron microscopy²⁵ and microbeam X-ray diffraction studies²⁰. In particular, our observation of a narrower boundary layer in the [100] direction compared to [210] and higher index directions by estimating the Li content is consistent with the trend reported by Nakamura et al. based on changes in lattice spacings²⁵. In contrast to their work, the volume of lithium removed from the crystal in our case was much smaller than that remaining in the crystal, and thus a large chemical potential difference existed across the biphasic boundary layer after delithiation. It is not clear what volume fraction of Li needs to be removed before the Li-poor phase can coexist in equilibrium with the Li-rich phase, but the large chemical potential difference in our case provided sufficient driving force for Li atoms from the Li-rich bulk to re-lithiate the Li-poor surface by diffusion through the boundary layer. This resulted in the simultaneous motion of the boundary layer to the surfaces (both the original (010) surface and those exposed by cracking) in the manner described in the previous section and reduction in the volume of Li-poor phase, with no noticeable change in the Li content of the crystal bulk.

Wagemaker and coworkers²⁰ showed that the width and sharpness of the boundary layer vary depending on the delithiation rate, with more diffuse boundaries, which appear to be favourable for fast charge/discharge kinetics and electrode lifetime, forming under higher cycling rates. Our STEM and EELS results show that at the atomic level the interface has its own distinct morphology, with an inherently diffuse LiFePO₄/boundary layer interface and a faceted FePO₄/boundary layer interface whose local orientations shift and realign as re-lithiation of the Li-poor surface layer proceeds. Consistent with earlier theoretical results^{31,32}, Li-ion migration was seen to proceed most rapidly in the [010] direction, with much slower migration in the [100] direction. This further emphasises the importance of the (010) surface for enabling rapid charging and discharging of olivine-type cathode materials.

In our case, chemical delithiation would have rapidly removed Li atoms from the (010) surface, so it is likely that at first an extended solid-solution region was formed, such as has been reported by Hess et al. from combined operando XRD-electrochemical impedance spectroscopy measurements⁴⁷. Using

first-principles calculations, Abdellahi et al.¹⁷ showed that spinodal decomposition of an intermediate solid-solution phase preferentially leads to the formation of an *ac*-oriented boundary rather than the elastically favoured *bc*-oriented boundary that is often observed in electrochemically delithiated particles. The biphasic interfaces observed in this study are thus likely to resemble those in LiFePO₄ particles subjected to rapid charging. Our observation of multiphase/multidomain boundary regions is also consistent with Hess et al.'s results for high-rate electrochemically delithiated crystals⁴⁷. This may explain why the FePO₄/boundary region observed in our study is more faceted than that predicted from first-principles studies of the Li_{2/3}FePO₄ structure by Boucher et al.¹⁰, which corresponds to a *bc*-oriented LiFePO₄/FePO₄ boundary in a slowly delithiated crystal. Formation of *ac*-oriented boundaries in rapidly charged particles should also favour rapid discharging because a greater area of delithiated phase is normal to the preferred Li-ion intercalation direction. Depending on the discharge rate, interfaces between delithiated and re-lithiating phases may be either faceted or diffuse during intercalation of Li ions, but for rapidly charged and discharged crystals biphasic boundaries are expected to resemble the structures observed in this study after relaxation.

Quantitative nano-level EELS measurements also confirmed earlier inferences that the Li content varies gradually across the boundary phase. However, although the average Li content was found to vary more-or-less linearly from one side of the biphasic boundary to the other, at the atomic level our observations revealed a more complex situation in which the boundary region consists not of a single phase, as had been assumed previously, but of a mixture of two or more phases with slightly different crystal symmetries, Li contents, Li-vacancy ordering and lattice strains. Interestingly these subphases remain coherently bonded to one another, with no dislocations observed in either the Li-rich, Li-poor or interface regions, and only the monoclinic subphase exhibited a crystal symmetry different to that of the end-member phases. Given the complexity and metastable nature of the boundary layer, the size, distribution and Li contents of these subphases likely vary as a function of time and degree or rate of (de)lithiation.

The above results help explain how the interface layer alleviates lattice strain between the two thermodynamically stable end-member phases while retaining a high degree of structural integrity. These insights have implications for the development not only of olivine-type cathode materials but more generally for other topotactic materials in which non-equilibrium solid-solution transformation mechanisms can be exploited to achieve improved rate capabilities.

Methods

Experimental procedure. A commercially available LiFePO₄ single crystal (Oxide Corp.) was used for all experiments. The crystal was cut perpendicular to each principal axis and polished. The size of the single crystal was around $0.5 \times 0.5 \times 0.5 \text{ mm}^3$. Samples with fresh fracture surfaces were obtained by manually applying a bending force to the crystal with a pair of tweezers (Supplementary Fig. 1a). Samples were delithiated by chemical oxidation in an acetonitrile solvent using NO₂BF₄ as the oxidant according to $\text{LiFePO}_4 + x\text{NO}_2\text{BF}_4 \rightarrow \text{Li}_{1-x}\text{FePO}_4 + x\text{LiBF}_4 + x\text{NO}_2$. The molar ratio *x* was about 0.2. After a reaction time of 3–5 min, the crystal was washed in acetonitrile several times to halt delithiation.

(010) surface samples before and after delithiation were coated with carbon (around 100 nm) for viewing by scanning electron microscopy (SEM). Cross-sectional scanning transmission electron microscopy (STEM) samples were prepared using a dual-beam focused ion beam (FIB) scanning microscope (NB5000, Hitachi High-Technologies Co.) with Ga ions. Damage layers were partially removed at 2 kV during the last stage of FIB, and completely removed by subsequent gentle Ar ion milling (PIPS, Gatan Inc.) using a cold stage at around –150 °C. The sample thickness varied from about 50 to 100 nm over the observed areas. To prevent contamination affecting the EELS spectra, hydrocarbon

contaminants were removed from samples with an ion cleaner (JIC-410, JEOL Ltd.) before being placed in the microscope. The overall Li deficiency after delithiation was estimated to be around 0.2% (giving an overall composition of $\text{Li}_{0.998}\text{FePO}_4$) by comparing volumes of LiFePO_4 and FePO_4 regions in a freshly milled sample as described in Supplementary Note 9.

Between STEM experiments, samples were stored in two different ways. From about 8 to 80 h after delithiation, samples were kept in the electron microscope under a vacuum of $\sim 8.0 \times 10^{-6}$ Pa. After this time, samples were kept in a vacuum desiccator (around 150 Pa) at room temperature. Samples were transferred between FIB and microscope, and microscope and desiccator (and vice versa), in air with an exposure time of <10 min in each case.

The structure of the delithiated $\text{Li}_{1-x}\text{FePO}_4$ crystal was investigated by STEM using an aberration-corrected (CEOS GmbH) scanning transmission electron microscope (JEM-2100F, JEOL Ltd.). STEM observations were performed at accelerating voltages of 200 kV. The probe-forming aperture semiangle used was 17 mrad, and ABF STEM images were recorded with 10–23 mrad detectors. A radial difference filter (HREM Filters Lite v1.5.1, HREM Research Inc.) was applied to the image to reduce noise. ABF image simulations were generated using the program xHREM (HREM Research Inc.).

EELS spectra were obtained using an EELS spectrometer (Tridiem ERS, Gatan, Inc.) attached to a Wien-filter monochromated aberration-corrected STEM (JEM-2400FCS, JEOL Ltd.) operated at 200 kV. EELS spectra were recorded in STEM mode using 0.1 eV per channel and an energy resolution of 250–300 meV (full-width at half-maximum of zero-loss peak). The convergence and collection semiangles were 33 and 43 mrad, respectively.

Computational procedure. The structure and stability of $\text{Li}_{2/3}\text{FePO}_4$ were investigated using first-principles calculations within the framework of density functional theory (DFT). The projected augmented-wave (PAW) method^{48,49} was used, as implemented in the VASP code^{50–52}, with the following electron configurations treated explicitly in the pseudopotentials of neutral atoms: $2s^1$ for Li, $3p^6 3d^6 4s^2$ for Fe, $3s^2 3p^3$ for P and $2s^2 2p^4$ for O. The cutoff energy for plane-wave basis sets was 500 eV. The mesh size for k -point sampling in the Brillouin zone was $2 \times 3 \times 4$ for LiFePO_4 and FePO_4 . For $\text{Li}_{2/3}\text{FePO}_4$, a k -point sampling mesh of $2 \times 2 \times 4$ was used. All calculations were carried out with the systems in a spin-polarised ferromagnetic state. The GGA + U approach⁵³ was used to account for strong correlation effects of Fe $3d$ orbitals with U set at 4.3 eV⁵⁴, the mean value of parameters reported for Fe^{2+} and Fe^{3+} atoms by Zhou et al.⁵⁵. Crystal structures were considered fully optimised once residual forces on all atoms were below 0.02 eV \AA^{-1} . Calculated lattice parameters were in good agreement with experimental values (Supplementary Table 1).

Data availability. The data that support the findings of this study are available from the corresponding author upon reasonable request.

Received: 11 December 2017 Accepted: 19 June 2018

Published online: 20 July 2018

References

1. Padhi, A. K., Nanjundaswamy, K. S. & Goodenough, J. B. Phospho-olivines as positive-electrode materials for rechargeable lithium batteries. *J. Electrochem. Soc.* **144**, 1188–1194 (1997).
2. Delmas, C., Maccario, M., Croguennec, L., Le Cras, F. & Weill, F. Lithium deintercalation in LiFePO_4 nanoparticles via a domino-cascade model. *Nat. Mater.* **7**, 665–671 (2008).
3. Nishimura, S. et al. Experimental visualization of lithium diffusion in Li_xFePO_4 . *Nat. Mater.* **7**, 707–711 (2008).
4. Kang, B. & Ceder, G. Battery materials for ultrafast charging and discharging. *Nature* **458**, 190–193 (2009).
5. Malik, R., Abdellahi, A. & Ceder, G. A critical review of the Li insertion mechanisms in LiFePO_4 electrodes. *J. Electrochem. Soc.* **160**, A3179–A3197 (2013).
6. Delacourt, C., Poizot, P., Levasseur, S. & Masquelier, C. Size effects on carbon-free LiFePO_4 powders. *Electrochem. Solid-State Lett.* **9**, A352–A355 (2006).
7. Huang, H., Yin, S.-C. & Nazar, L. Approaching theoretical capacity of LiFePO_4 at room temperature at high rates. *Electrochem. Solid-State Lett.* **4**, A170–A172 (2001).
8. Ravet, N. et al. Electroactivity of natural and synthetic triphylite. *J. Power Sources* **97–98**, 503–507 (2001).
9. Zaghbi, K., Mauger, A., Goodenough, J. B., Gendron, F. & Julien, C. M. Electronic, optical, and magnetic properties of LiFePO_4 : small magnetic polaron effects. *Chem. Mater.* **19**, 3740–3747 (2007).
10. Boucher, F., Gaubicher, J., Cuisinier, M., Guyomard, D. & Moreau, P. Elucidation of the $\text{Na}_{2/3}\text{FePO}_4$ and $\text{Li}_{2/3}\text{FePO}_4$ intermediate superstructure revealing a pseudouniform ordering in 2D. *J. Am. Chem. Soc.* **136**, 9144–9157 (2014).
11. Nishimura, S., Natsui, R. & Yamada, A. Superstructure in the metastable intermediate-phase $\text{Li}_{2/3}\text{FePO}_4$ accelerating the lithium battery cathode reaction. *Angew. Chem. Int. Ed.* **54**, 8939–8942 (2015).
12. Orikasa, Y. et al. Direct observation of a metastable crystal phase of Li_xFePO_4 under electrochemical phase transition. *J. Am. Ceram. Soc.* **135**, 5497–5500 (2013).
13. Liu, H. et al. Batteries. Capturing metastable structures during high-rate cycling of LiFePO_4 nanoparticle electrodes. *Science* **344**, 1252817 (2014).
14. Andersson, A. S., Kalska, B., Haggstrom, L. & Thomas, J. O. Lithium extraction/insertion in LiFePO_4 : an X-ray diffraction and Mossbauer spectroscopy study. *Solid State Ion.* **130**, 41–52 (2000).
15. Zhou, F., Maxisch, T. & Ceder, G. Configurational electronic entropy and the phase diagram of mixed-valence oxides: the case of Li_xFePO_4 . *Phys. Rev. Lett.* **97**, 155704 (2006).
16. Malik, R., Zhou, F. & Ceder, G. Kinetics of non-equilibrium lithium incorporation in LiFePO_4 . *Nat. Mater.* **10**, 587–590 (2011).
17. Abdellahi, A., Akyildiz, O., Malik, R., Thornton, K. & Ceder, G. The thermodynamic stability of intermediate solid solutions in LiFePO_4 nanoparticles. *J. Mater. Chem. A* **4**, 5436–5447 (2016).
18. Delacourt, C., Poizot, P., Tarascon, J.-M. & Masquelier, C. The existence of a temperature-driven solid solution in Li_xFePO_4 for $0 \leq x \leq 1$. *Nat. Mater.* **4**, 254–260 (2005).
19. Furutsuki, S. et al. Electrochromism of Li_xFePO_4 induced by intervalence charge transfer transition. *J. Phys. Chem. C* **116**, 15259–15264 (2012).
20. Zhang, X. et al. Direct view on the phase evolution in individual LiFePO_4 nanoparticles during Li-ion battery cycling. *Nat. Commun.* **6**, 8333 (2015).
21. Findlay, S. D., Lugg, N. R., Shibata, N., Allen, L. J. & Ikuhara, Y. Prospects for lithium imaging using annular bright field scanning transmission electron microscopy: a theoretical study. *Ultramicroscopy* **111**, 1144–1154 (2011).
22. Huang, R. et al. Real-time direct observation of Li in LiCoO_2 cathode material. *Appl. Phys. Lett.* **98**, 051913 (2011).
23. Chung, S.-Y., Choi, S.-Y., Lee, S. & Ikuhara, Y. Distinct configurations of antisite defects in ordered metal phosphates: comparison between LiMnPO_4 and LiFePO_4 . *Phys. Rev. Lett.* **108**, 125502 (2012).
24. Huang, R. & Ikuhara, Y. STEM characterization for lithium-ion battery cathode materials. *Curr. Opin. Solid State Mater. Sci.* **16**, 31–38 (2012).
25. Nakamura, A. et al. Phase boundary structure of Li_xFePO_4 cathode material revealed by atomic-resolution scanning transmission electron microscopy. *Chem. Mater.* **26**, 6178–6184 (2014).
26. Gu, L., Xiao, D., Hu, Y.-S., Li, H. & Ikuhara, Y. Atomic-scale structure evolution in a quasi-equilibrated electrochemical process of electrode materials for rechargeable batteries. *Adv. Mater.* **27**, 2134–2149 (2015).
27. Findlay, S. D., Huang, R., Ishikawa, R., Shibata, N. & Ikuhara, Y. Direct visualization of lithium via annular bright field scanning transmission electron microscopy: a review. *Microscopy* **66**, 3–14 (2017).
28. Laffont, L. et al. Study of the $\text{LiFePO}_4/\text{FePO}_4$ two-phase system by high-resolution electron energy loss spectroscopy. *Chem. Mater.* **18**, 5520–5529 (2006).
29. Moreau, P., Mauchamp, V., Pailloux, F. & Boucher, F. Fast determination of phases in Li_xFePO_4 using low losses in electron energy-loss spectroscopy. *Appl. Phys. Lett.* **94**, 123111 (2009).
30. Kobayashi, S., Fisher, C. A. J., Kuwabara, A., Ukyo, Y. & Ikuhara, Y. Quantitative analysis of Li distributions in battery material $\text{Li}_{1-x}\text{FePO}_4$ using Fe $M_{2,3}$ -edge and valence electron energy loss spectra. *Microscopy* **66**, 254–260 (2017).
31. Morgan, D., Van der Ven, A. & Ceder, G. Li conductivity in Li_xMPO_4 (M=Mn, Fe, Co, Ni) olivine materials. *Electrochem. Solid State Lett.* **7**, A30–A32 (2004).
32. Islam, M. S., Driscoll, D. J., Fisher, C. A. J. & Slater, P. R. Atomic-scale investigation of defects, dopants, and lithium transport in the LiFePO_4 olivine-type battery material. *Chem. Mater.* **17**, 5085–5092 (2005).
33. Chen, G., Song, X. & Richardson, T. J. Electron microscopy study of the LiFePO_4 to FePO_4 phase transition. *Electrochem. Solid State Lett.* **9**, A295–A298 (2006).
34. Kobayashi, S. et al. Atomic-scale observations of (010) LiFePO_4 surfaces before and after chemical delithiation. *Nano Lett.* **16**, 5409–5414 (2016).
35. Weichert, K. et al. Phase boundary propagation in large LiFePO_4 single crystals on delithiation. *J. Am. Ceram. Soc.* **134**, 2988–2992 (2012).
36. Kinyanjui, M. K. et al. Origin of valence and core excitations in LiFePO_4 and FePO_4 . *J. Phys. Condens. Matter* **22**, 275501 (2010).
37. Kobayashi, S. et al. Simultaneous visualization of oxygen vacancies and the accompanying cation shifts in a perovskite oxide by combining annular imaging techniques. *Appl. Phys. Lett.* **100**, 193112 (2012).
38. Ong, S. P., Chevrier, V. L. & Ceder, G. Comparison of small polaron migration and phase separation in olivine LiMnPO_4 and LiFePO_4 using hybrid density functional theory. *Phys. Rev. B* **83**, 075112 (2011).

39. Lu, J., Oyama, G., Nishimura, S.-i & Yamada, A. Increased conductivity in the metastable intermediate in Li_xFePO_4 electrode. *Chem. Mater.* **28**, 1101–1106 (2016).
40. Niu, J. et al. In situ observation of random solid solution zone in LiFePO_4 electrode. *Nano Lett.* **14**, 4005–4010 (2014).
41. Franger, S., Le Cras, F., Bourbon, C. & Rouault, H. LiFePO_4 synthesis routes for enhanced electrochemical performance. *Electrochem. Solid-State Lett.* **5**, A231–A233 (2002).
42. Prosini, P. P., Lisi, M., Zane, D. & Pasquali, M. Determination of the chemical diffusion coefficient of lithium in LiFePO_4 . *Solid State Ion.* **148**, 45–51 (2002).
43. Amin, R., Balaya, P. & Maier, J. Anisotropy of electronic and ionic transport in LiFePO_4 single crystals. *Electrochem. Solid-State Lett.* **10**, A13–A16 (2007).
44. Sugiyama, J. et al. Magnetic and diffusive nature of LiFePO_4 investigated by muon spin rotation and relaxation. *Phys. Rev. B* **84**, 054430 (2011).
45. Peng, L., Zhao, Y., Ding, Y. & Yu, G. Self-assembled LiFePO_4 nanowires with high rate capability for Li-ion batteries. *Chem. Commun.* **50**, 9569–9572 (2014).
46. Liu, H. et al. Effects of antisite defects on Li diffusion in LiFePO_4 revealed by Li isotope exchange. *J. Phys. Chem. C* **121**, 12025–12036 (2017).
47. Hess, M., Sasaki, T., Villevieille, C. & Novak, P. Combined operando X-ray diffraction-electrochemical impedance spectroscopy detecting solid solution reactions of LiFePO_4 in batteries. *Nat. Commun.* **6**, 8169 (2015).
48. Blöchl, P. E. Projector augmented-wave method. *Phys. Rev. B* **50**, 17953–17979 (1994).
49. Kresse, G. & Joubert, D. From ultrasoft pseudopotentials to the projector augmented-wave method. *Phys. Rev. B* **59**, 1758–1775 (1999).
50. Kresse, G. & Hafner, J. Ab initio molecular dynamics for liquid metals. *Phys. Rev. B* **47**, 558–561 (1993).
51. Kresse, G. & Furthmüller, J. Efficient iterative schemes for ab initio total-energy calculations using a plane-wave basis set. *Phys. Rev. B* **54**, 11169–11186 (1996).
52. Kresse, G. & Furthmüller, J. Efficiency of ab-initio total energy calculations for metals and semiconductors using a plane-wave basis set. *Comput. Mater. Sci.* **6**, 15–50 (1996).
53. Dudarev, S. L., Botton, G. A., Savrasov, S. Y., Humphreys, C. J. & Sutton, A. P. Electron-energy-loss spectra and the structural stability of nickel oxide: an LSDA+*U* study. *Phys. Rev. B* **57**, 1505–1509 (1998).
54. Dathar, G. K. P., Sheppard, D., Stevenson, K. J. & Henkelman, G. Calculations of Li-ion diffusion in olivine phosphates. *Chem. Mater.* **23**, 4032–4037 (2011).
55. Zhou, F., Cococcioni, M., Marianetti, C., Morgan, D. & Ceder, G. First-principles prediction of redox potentials in transition-metal compounds with LDA+*U*. *Phys. Rev. B* **70**, 235121 (2004).

Acknowledgements

This work was supported by the Research and Development Initiative for Scientific Innovation of New Generation Batteries 2 (RISING 2) project from the New Energy and Industrial Technology Development Organization (NEDO), Japan.

Author contributions

S.K. carried out STEM observations and analysis. A.K. performed DFT calculations. S.K., A.K. and C.A.J.F. wrote the paper. Y.U. and Y.I. directed the experiments. All authors contributed to discussion of the results and have read and commented on the manuscript.

Additional information

Supplementary Information accompanies this paper at <https://doi.org/10.1038/s41467-018-05241-1>.

Competing interests: The authors declare no competing interests.

Reprints and permission information is available online at <http://npg.nature.com/reprintsandpermissions/>

Publisher's note: Springer Nature remains neutral with regard to jurisdictional claims in published maps and institutional affiliations.



Open Access This article is licensed under a Creative Commons Attribution 4.0 International License, which permits use, sharing, adaptation, distribution and reproduction in any medium or format, as long as you give appropriate credit to the original author(s) and the source, provide a link to the Creative Commons license, and indicate if changes were made. The images or other third party material in this article are included in the article's Creative Commons license, unless indicated otherwise in a credit line to the material. If material is not included in the article's Creative Commons license and your intended use is not permitted by statutory regulation or exceeds the permitted use, you will need to obtain permission directly from the copyright holder. To view a copy of this license, visit <http://creativecommons.org/licenses/by/4.0/>.

© The Author(s) 2018