

ARTICLE

Received 20 Mar 2015 | Accepted 29 Jul 2015 | Published 14 Sep 2015

DOI: 10.1038/ncomms9208

OPEN

Integrating regional conservation priorities for multiple objectives into national policy

Maria Beger¹, Jennifer McGowan¹, Eric A. Trembl², Alison L. Green³, Alan T. White⁴, Nicholas H. Wolff⁵, Carissa J. Klein⁶, Peter J. Mumby⁵ & Hugh P. Possingham^{1,7}

Multinational conservation initiatives that prioritize investment across a region invariably navigate trade-offs among multiple objectives. It seems logical to focus where several objectives can be achieved efficiently, but such multi-objective hotspots may be ecologically inappropriate, or politically inequitable. Here we devise a framework to facilitate a regionally cohesive set of marine-protected areas driven by national preferences and supported by quantitative conservation prioritization analyses, and illustrate it using the Coral Triangle Initiative. We identify areas important for achieving six objectives to address ecosystem representation, threatened fauna, connectivity and climate change. We expose trade-offs between areas that contribute substantially to several objectives and those meeting one or two objectives extremely well. Hence there are two strategies to guide countries choosing to implement regional goals nationally: multi-objective hotspots and complementary sets of single-objective priorities. This novel framework is applicable to any multilateral or global initiative seeking to apply quantitative information in decision making.

¹ Australian Research Council Centre of Excellence for Environmental Decisions, School of Biological Sciences, The University of Queensland, Brisbane, Queensland 4072, Australia. ² School of Biosciences, University of Melbourne, Melbourne, Victoria 3010, Australia. ³ Indo-Pacific Division, The Nature Conservancy, 245 Riverside Drive, West End, Queensland 4101, Australia. ⁴ Indo-Pacific Division, The Nature Conservancy, 923 Nu'uuanu Avenue, Honolulu, Hawaii 96817-1539, USA. ⁵ Marine Spatial Ecology Lab, School of Biological Sciences, The University of Queensland, Brisbane, Queensland 4072, Australia. ⁶ School of Geography, Planning and Environmental Management, The University of Queensland, Brisbane, Queensland 4072, Australia. ⁷ Department of Life Sciences, Imperial College London, Silwood Park, Ascot, Berkshire, SL5 7PY England, UK. Correspondence and requests for materials should be addressed to M.B. (email: m.beger@uq.edu.au).

Many regional conservation initiatives try to achieve co-ordinated resource management while recognizing trans-boundary ecological and social processes^{1–3}. Evaluating and successfully negotiating the need to meet multiple objectives is pivotal to the success of these often multinational conservation initiatives that need to prioritize investment across a region^{4–8}. For example, among the more intuitive options is to concentrate efforts in places where multiple conservation benefits can be achieved simultaneously^{2,9,10}, but such multi-objective hotspots may not be ecologically appropriate for some taxa or habitats¹¹, or socio-economically equitable¹². Regionally co-ordinated conservation may achieve broad-scale or even global conservation goals more efficiently^{1–3}, but, in reality, almost all resource management actions are established through national, provincial and local planning processes. Missing from most regional efforts are guiding strategies that make trade-offs explicit and offer alternative choices to national planners aiming to consider the broader regional needs.

Examples of multilateral conservation and management efforts are the Micronesia Challenge for marine and terrestrial resource management, Giant Catfish and Irrawaddy Dolphin conservation projects in the Mekong River, Natura2000 in Europe and potential novel land/seascapes in the Arctic and Antarctic. Our case study is the Coral Triangle Initiative on Coral Reefs, Fisheries, and Food Security (CTI-CFF), a regional partnership of six countries: the Philippines, Malaysia, Indonesia, Timor Leste, Papua New Guinea and the Solomon Islands, established to sustain globally imperilled coral reefs and associated ecosystems. This Indo-Pacific region is the global centre of marine diversity, providing ecosystem services such as fisheries and coastal defence for millions of people¹³. Because marine-protected area (MPA) networks are a key management instrument for threatened coral reef ecosystems^{14–16}, the CTI-CFF aims to expand their existing Coral Triangle MPA System until at least 20% of it is managed for sustainability and 10% is in no-take protection¹³, an increase from current levels of 14 and 2%, respectively. The broad goals for these investments encapsulate ecological and social considerations including representativeness, connectivity, resilience and the protection of threatened species¹³. These goals aim to secure incomes, livelihoods and food security benefits for coastal communities.

We convert the CTI-CFF goals into six explicit regional conservation objectives (each of which has a short name): represent marine habitats (representation); preserve critical fish spawning aggregation sites for groupers (fish spawning aggregations (FSA)) and important habitats for threatened sea turtles (turtle); maximize larval dispersal among reefs for coral trout (trout) and sea cucumbers (cucumber); and protect reefs likely to experience less mortality from predicted climate change impacts (climate). While accounting for existing no-take protected areas, we identify conservation benefits across the region for each objective using a spatial systematic prioritization tool¹⁷. Sites with high regional conservation benefits are identified as areas of broad conservation interest that should be regional investment priorities. We therefore report results for provinces that are administrative units on land that have an offshore jurisdiction. We estimate the conservation benefit of each province as the proportion of planning units (10 × 10 km size) that are selected at least half the time in possible solutions to the problem for one or more of the six conservation objectives. We discover eight multi-objective hotspot provinces that achieve conservation benefits in the top quartile for each objective relative to other provinces. However, prioritizing multi-objective provinces will ignore provinces that achieve single objectives effectively and efficiently. An alternative strategy is to target a suite of complementary provinces each with exceptional benefits for one or two objectives. Both strategies need to recognize the importance of every nation reaching its own goals, and contributing to regional goals: to address this, we devise a framework to facilitate a regionally cohesive set of MPAs through regional collaboration, which is driven by national preferences.

Results and Discussion

From goals to objectives for the Coral Triangle Initiative. The six objectives considered here arise from regional goals set during the CTI-CFF negotiations and available social and ecological information across the region (Supplementary Table 1). The objectives also encompass ecological MPA network design criteria needed to ensure biodiversity persistence⁸. First, habitat representation is the basic conservation approach to capture all biodiversity¹⁸ (Table 1). Second, FSA and sea turtles are examples

Table 1 | Summary of how the six regional conservation objectives were implemented in the decision support software, showing the proportion of features to be included within the regional MPA system (planning unit targets), whether connectivity is implemented (connections between planning units) and citing papers who developed the approaches used.

Objective	Planning unit targets	Connections between planning units	Method introduced
Representation	20% Of 11 habitats 10% Of 21 bioregions	None	17,18
Fish spawning aggregations (FSA)	20% Of 11 habitats 10% Of 21 bioregions All FSA sites	None	41, this study
Sea turtles	50% FSA 20-km catchments 20% Of 11 habitats 10% Of 21 bioregions 50% Nesting habitats 50% Foraging habitats	Maximize migration route connectivity	This study
Coral trout connectivity	20% Of 11 habitats 10% Of 21 bioregions	Maximize larval dispersal connectivity	24
Sea cucumber connectivity	20% Of 11 habitats 10% Of 21 bioregions	Maximize larval dispersal connectivity	24
Climate change	20% Of 11 habitats in 2030, declined by modelled rates 10% Of 21 bioregions	None	This study

MPA, marine-protected area.

of processes and threatened species that play key roles in food provisioning, tourism and culture, and encompass cross-boundary dependencies. For example, the protection of FSAs is critical for creating a pool of larvae that crosses and recruits across national boundaries¹⁹. Hence, our design criteria aim to protect all aggregation sites and parts of their land-based catchments²⁰ (Table 1; Supplementary Fig. 2a). Sea turtles are emblematic of the challenges faced by threatened migratory species that move long distances between nesting and foraging habitats. Records of long-distance marine turtle migration highlight movements that connect nations and span continents²¹, exposing them to high mortality from artisanal catches and incidental commercial fishing by-catch. We develop a novel planning method to use satellite tracks for four species of marine turtle to maximize connectivity between their nesting and foraging grounds (Table 1; Supplementary Figs 1b and 3c).

Connectivity through larval dispersal underpins recruitment and ecosystem resilience in marine systems where most organisms undergo a pelagic stage²². We model demographic connectivity among reefs with a biophysical dispersal model²³ using specific parameters for coral trout (*Plectropomus leopardus*) and a sea cucumber (*Holothuria whitmaei*). These species were chosen in consultation with representatives from all six countries as important fisheries species with contrasting dispersal abilities (Supplementary Fig. 2c,d). When we attempt to maximize connectivity for individual species, or species groups²⁴, the conservation benefits of different locations varies markedly (Fig. 2; Supplementary Fig. 3d,e). Provinces with the highest conservation benefit for larval connectivity objectives are very different to priority provinces for any other objective (Fig. 2a).

Finally, the CTI-CFF goals include mitigating the impacts⁴ of climate change, because the impact of thermal stress on coral reefs is expected to be severe^{15,25}. Protection cannot directly mitigate climate change stressors, but it serves to enhance recovery processes^{6,14,16}. We identify areas of high conservation benefit by representing reef habitats in 2030 using predicted degradation rates, a novel approach to include explicit climate change objectives into spatial prioritization. We modelled the degradation rates across the coral triangle from dynamic growth trajectories of coral cover over time as a function of predicted thermal stress exposure and aragonite saturation²⁶ (Supplementary Fig. 2e). We then degraded the existing coral reef

habitat according to predicted rates to serve as conservation targets in this analysis.

Reconciling conservation benefits for multiple objectives.

When we use different conservation objectives the best locations for marine reserves changes a lot (for example, see Supplementary Fig. 3), especially when underlying ecological processes are heterogeneously distributed. The resulting trade-offs may hamper conservation progress at regional scales, where transaction costs to reach agreement among collaborating institutions could outweigh potential benefits. These issues are difficult to overcome for conservation initiatives, as missing from most regional efforts are guiding strategies that make trade-offs explicit and offer alternative choices to national planners aiming to consider regional needs. Ideally, conservation efforts are implemented in places where they can achieve the highest benefits for multiple objectives simultaneously^{5,12}. In the CTI-CFF, we discover eight provinces that achieve high conservation benefit for all six objectives (above the upper quartile selection frequency) (Fig. 1), and call them ‘multi-objective hotspots’. Akin to biodiversity hotspots, which are places where the highest number of species ranges overlap²⁷, multi-objective hotspots are provinces where conservation benefits for multiple objectives coincide (Fig. 1). Multi-objective hotspots are a small subset of centrally located provinces, but investing in them alone would conflict with the nature of fair multilateral collaboration and equity¹². At the same time, the conservation benefit for each objective achieved by multi-objective hotspots invokes quality trade-offs¹⁰, as the provinces that are best at meeting a single objective are not often part of the multi-objective hotspot portfolio (Fig. 2). Multi-objective hotspots are likely to always exist in heterogeneous planning problems, as they embody the trade-off between the level of benefit and achieving many objectives at once.

When we identify the provinces with the highest conservation benefits for any single objective (that is, within the upper 10%), we discover typically low performance across two or more of the other objectives (Fig. 2). This illustrates the spatial incongruence of high-priority provinces within and across countries (Fig. 3) and raises the option of a second strategy to achieve the highest conservation benefits, given multiple objectives. We offer a complementarity approach to allocating conservation resources

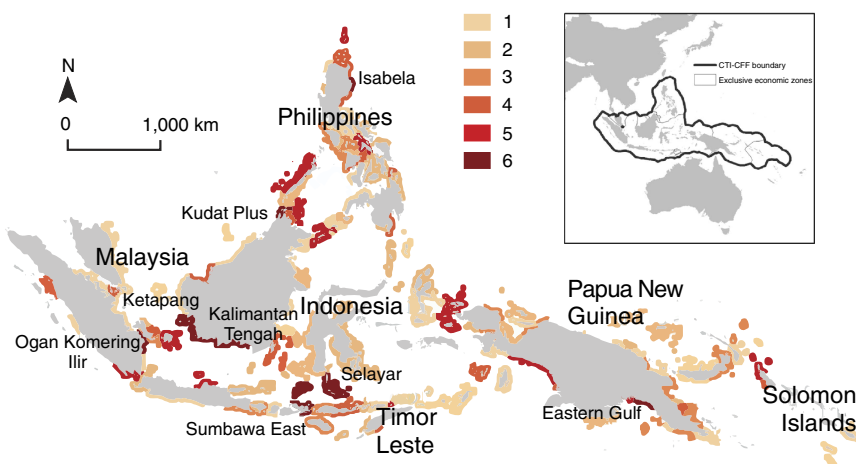


Figure 1 | Multi-objective conservation benefit hotspots in the Coral Triangle. Map summarizing the outcomes of objective-driven spatial conservation planning for six distinct conservation objectives in the Coral Triangle. Provinces with high conservation benefit (upper quartile) for every one of the six objectives are shown in dark red with graduated colours showing provinces that achieve conservation benefits for 5 down to 1 objectives. Some of the provinces we highlight as multi-objective hotspots are already areas of interest to the CTI-CFF (for example, Northern Sabah in Malaysia), while others emerged from our analysis (Ketapang and Kalimantan Tengah, and Selayar in Indonesia; Isabela in the Philippines; Eastern Gulf in PNG).

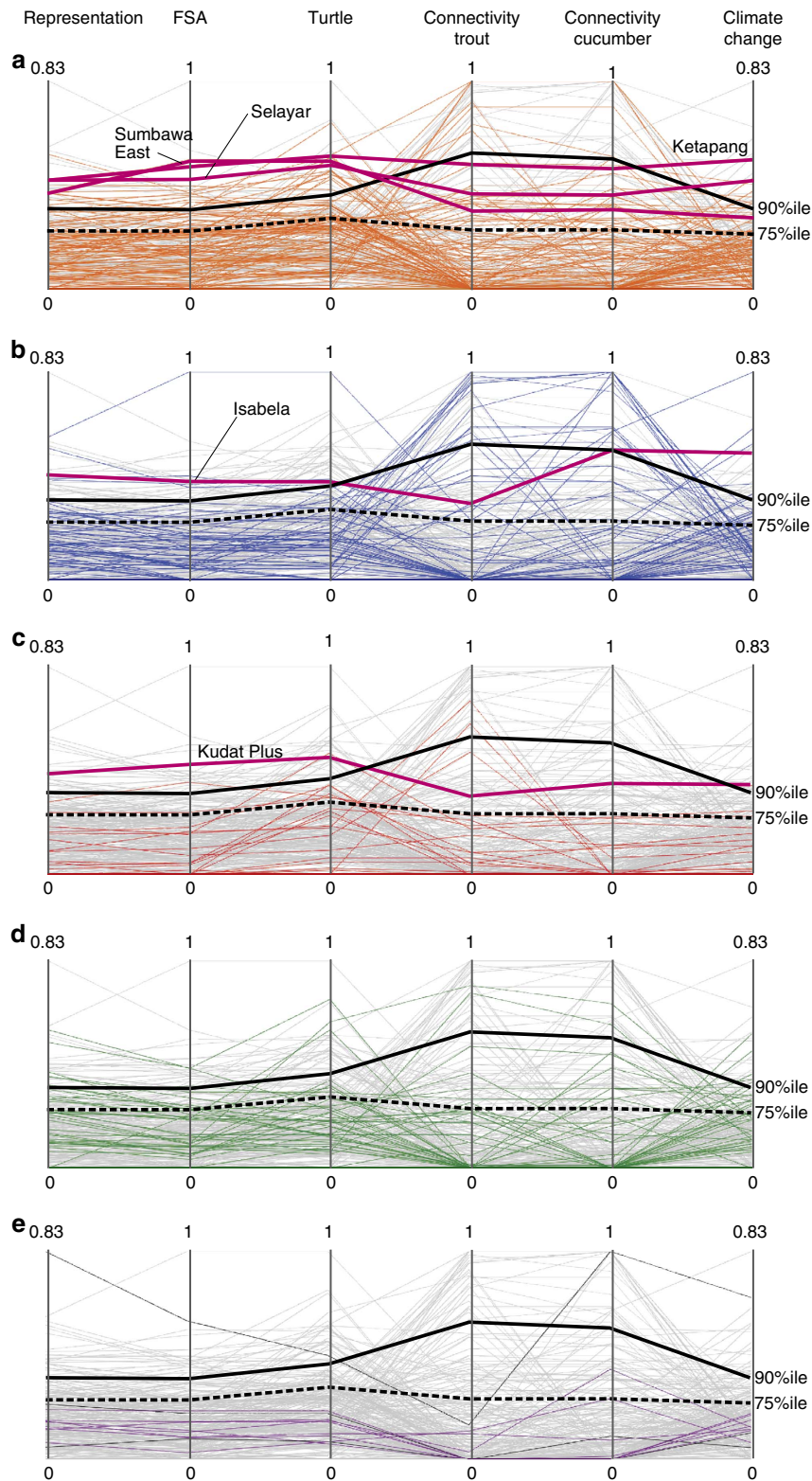


Figure 2 | Conservation benefit for each province for each of six objectives. Parallel coordinates plot displaying conservation benefit (ranging from 0 to the maximum) for six conservation objectives on their axes: representation, fish spawning aggregations (FSA), sea turtle habitat and migration (turtle), larval dispersal connectivity for coral trout (connectivity trout) and sea cucumbers (connectivity cucumber), and climate-driven habitat degradation (climate change). Each coloured line represents conservation benefit of provinces for the countries of: **(a)** Indonesia, **(b)** Philippines, **(c)** Malaysia, **(d)** Papua New Guinea and **(e)** Solomon Islands (purple) and East Timor (black), with other Coral Triangle provinces in the background (grey). Black lines denote the conservation benefit threshold for multi-objective hotspots (upper quartile, dashed line) and highest conservation benefit (90 percentile, solid line). Red lines represent examples of multi-objective hotspot provinces.

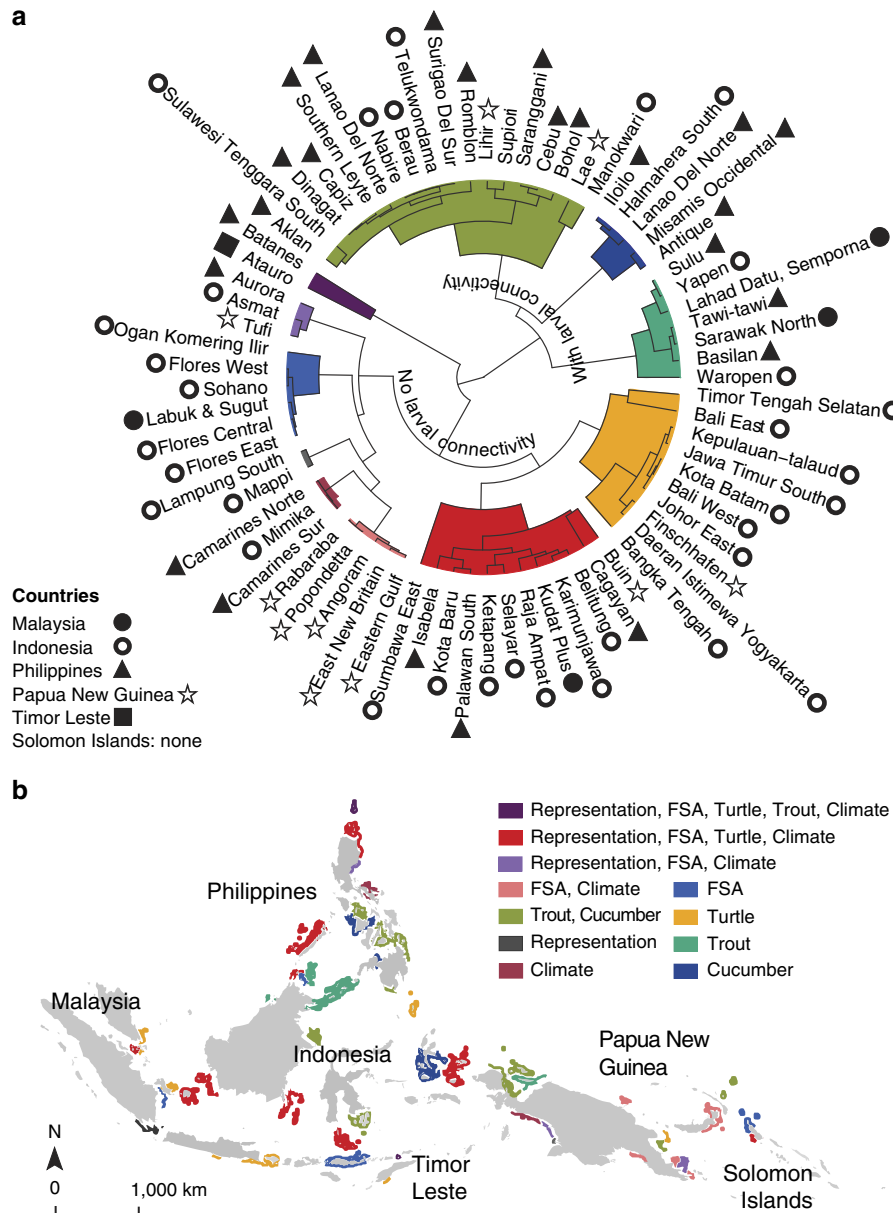


Figure 3 | Complementary maximum high conservation benefit provinces for single objectives. Comparison of provinces with very high conservation benefits (that is, top 10%), for specific objectives: **(a)** dendrogram of Euclidian dissimilarities in the distribution of conservation benefits for six objectives. Provinces group distinctly into clusters that are dominated by highest conservation benefits for single and combined objectives with maximum possible benefits for each objective across the region. **(b)** Provincial map showing the spatial distribution of complementary highest conservation benefits for single or subsets of conservation objectives.

to meet all six objectives across the region (Fig. 3), where highest overall conservation benefits can be secured by coordinating investment in provinces that can generate highest benefits for different objectives. For example, the province of Buin (Papua New Guinea) is very effective at meeting four of six objectives (Fig. 3a), but complementary conservation actions to sustain dispersal connectivity are needed elsewhere (Fig. 3). Investing in complementary conservation actions across a region caters towards the unique aspirations, resources and opportunities of each country. Aiming to capitalize on the highest conservation benefits for certain objectives in different parts of the region, complementary approaches recognize the spatially highly variable nature of conservation assets. For example, diverse processes and environmental conditions drive the habitats frequented by sea

turtles²¹, the locations of larval dispersal hubs²³ and reefs that appear more resilient to climate change impacts^{15,22,25}.

Co-ordinated prioritization to inform national policy. Co-ordinated multilateral conservation can reduce overall cost when targets can be managed in one location for the benefit of all collaborators¹⁻³, such as in multi-objective hotspots. Yet, in most settings, these approaches, while cost-effective, violate principles of equity (of both conservation burden and benefit), local resource stewardship, cultural connectedness to natural resources and risk spreading to counter localized catastrophes. Complementarity strategies, on the contrary, ensure that maximal conservation benefit for each objective is achieved, but depending

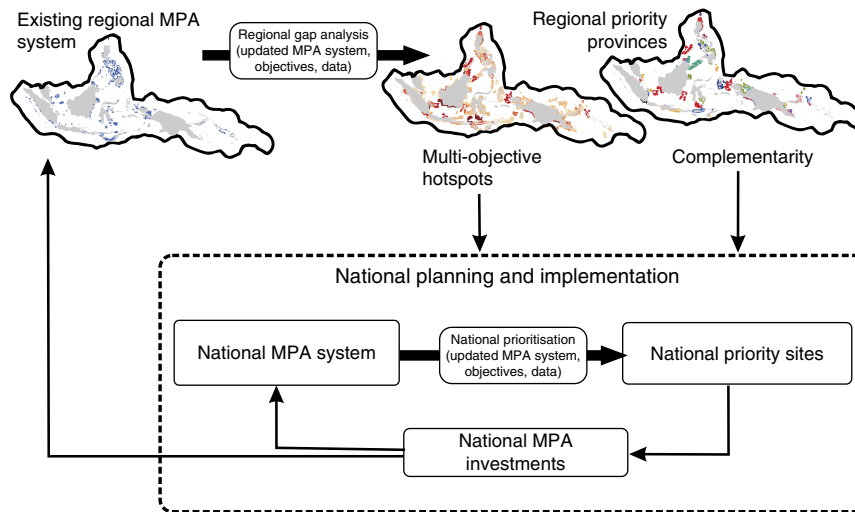


Figure 4 | Regional-national conservation framework. Schematic of a dynamic decision-making framework for embedding national priority setting into a regional context, where national goals are chosen with the additional decision criteria of regional priorities in mind. The framework includes scope for adaptive reassessment and planning.

on the objective targeted, they may be less efficient because they are not achieving multiple objectives in a single location.

Multilateral initiatives involve sovereign nations whose specific goals and resources govern how the two strategies presented here are implemented. These strategies provide the basis for integrating regional conservation benefits and national planning processes into a dynamic decision framework according to national preferences and resources (Fig. 4). In the Coral Triangle, it can enable the interplay between national goals and governance and regional commitments to the CTI-CFF. At a national scale, countries can utilize the multi-objective hotspot and complementary maps to invest in provinces that meet their national priorities and have regional benefits. Countries with multi-objective hotspots may wish to focus conservation efforts in these provinces, in combination with investing in complementary provinces. Countries lacking multi-objective hotspots can direct national preferences towards complementary provinces that achieve highest regional conservation benefits for targeted objectives. In such a framework, coordination among countries serves to avoid overlooking or under-representing some objectives in the long term, as regional conservation benefits are continually reviewed and updated to capture achievements of independently acting nations meeting their own goals (Fig. 4). Through the coordination of the CTI-CFF, decisions made in each country can be communicated and the process repeated, thus facilitating a regionally coherent MPA system as part of a long-term strategy.

This analysis demonstrates two alternative approaches to dealing with multi-objective trade-offs on a multinational scale in a practical and politically savvy manner. On the basis of objectives identified from regional goals and available data, we also provide a snapshot of broad areas of high potential conservation benefits in the Coral Triangle. Similar trade-offs are likely in other regions where a dynamic decision framework is applicable. This framework applies widely for institutionally nested conservation planning problems, serving to continually adapt broad- and local-scale priority setting processes and to benchmark local contributions towards broad goals.

Methods

Conservation prioritization approach. We collated spatial data for biodiversity, socio-economic and climate features from open and closed sources (Supplementary

Table 1), and explore regional conservation benefits using the spatial conservation decision support tool Marxan (freely available at <http://www.uq.edu.au/marxan/>)¹⁷ using 17, 264 planning units 10×10 km in size. Marxan uses a simulated annealing algorithm to implement the objective of achieving user-defined conservation targets such as the amounts of habitat types in protected areas for biodiversity representation and, where applicable, connectivity constraints, while minimizing the overall cost of a protected area system¹⁷. For example, a conservation goal could be to identify protected area systems that represent 20% of all habitats and leatherback turtle migration pathways with minimal losses to fisheries profit. Management efficiency is modelled by maximizing the spatial compactness and by minimizing the cost of the resulting reserve system. We elected not to pursue spatial compactness as a parameter (excluding connectivity analyses), as it would bias results towards established MPAs (Supplementary Fig. 1a) at the expense of identifying new conservation priorities. In each scenario, 100 runs were performed to assess the spatial variability in conservation priorities in the different solutions found. Hence, we calculate selection frequencies of reef, benthic and mangroves habitats in Marxan as a proxy for conservation priority areas across the 6 countries and 21 ecoregions²⁸ of the Coral Triangle.

Socio-economic cost of conservation. The total annual economic value of coastal and marine habitats in the Coral Triangle (coral reefs, mangroves and sea grass) is an estimated US \$2.3 billion for Indonesia and the Philippines alone²⁹. Many valued economic activities generating this wealth will be constrained when new protected areas are implemented to protect these ecosystems. Therefore, this analysis considers the human dimension as an indicator of potential conflict with users arising from restricting their activities (for example, prohibiting fishing)³⁰. We model them as foregone artisanal fishing profit for coral reef no-take reserves. For mangroves, we use the number of prospective local users (average population density per 10 km^2 area)³¹ as a proxy for potential conflict arising from mangrove-protected areas. The resulting socio-economic cost index represents the ‘cost’ value used in Marxan and covers mangrove and reef habitats (Supplementary Fig. 1b). All else being equal—places with a large cost will be avoided.

MPA delineation. The countries in the Coral Triangle have successfully established more than 1,900 MPAs (Supplementary Fig. 1a, July 2013)⁴; we needed to define ways of representing these existing MPAs in Marxan. Many locally managed protected areas throughout the region with known boundaries ($n = 498$) were often smaller than a single planning unit (10×10 km) used in the software. These small areas were assumed to be made up of their designated habitat (reef, sea grass or mangroves) and be entirely no-take. To represent their contribution to the amount of protected habitat they contribute, we calculated the proportion of these protected habitats in planning units, and where the cumulative reserved area per planning unit exceeded 50% of the total planning unit habitat, the planning unit was treated as an existing protected area in our analysis. We further represented no-take areas within large protected areas that encompass multiple planning units ($n = 58$, no zoning plans), by randomly selecting 10% of the planning units within to be allocated protected in our Marxan analyses—this number is in the mid-range of no-take amounts typical in the region. This method is fair across all large MPAs, but it possibly over- or underestimates actual habitat protection levels. We used

this representation of MPAs in the region to calculate the amounts of protected features currently protected for each country and ecoregion.

Fish spawning aggregations. The NGO Science and Conservation of Fish Aggregations (SCRFA) has collected FSA data in the region over the past decade (Supplementary Fig. 2a)²⁰. The database contained 216 records for 11 aggregating fish families, mostly Serranids (groupers). We aimed to capture 100% of known aggregation sites in reserve systems. To enhance the potential movement of fish from their home territories to the aggregation site, we created a 20-km catchment area and set targets of 50% representation of FSA catchments in conservation areas.

Connectivity (larvae and turtles). Marxan's algorithm identified sets of reserve sites fulfilling conservation targets while maximizing connectivity²⁴, with the connectivity strength CV_{ij} between planning units defined by either larval dispersal or turtle movement. To represent turtle migration connectivity, we developed a novel method to incorporate telemetry data into systematic conservation planning. Connectivity was calculated from the individual tracks of four species of turtle (Supplementary Fig. 2b). Ideally, each part of a track should be protected to ensure a turtle can reach a feeding or breeding site. We identified planning units along the turtle's path, and assigned a standardized connectivity strength to each pair of planning units along the track connected by turtle movement. By adding the resulting connectivity matrices for all individual tracks, we obtained accumulated connectivity matrices CV_{ij} , with higher values for pairs of planning units that were connected by more animals.

Larval dispersal was modelled as connectivity strength among reefs based on a biophysical model of larval dispersal^{23,32}. Transporting larvae by advection and diffusion processes in surface ocean currents, the dispersal model combined larval biological traits (pelagic larval duration and survival rates) and larval behaviour (for example, homing towards a reef) to obtain the likelihood of larvae moving among reefs³². Larval traits for coral trout (*P. leopardus*) and a sea cucumber (*H. whitmaei*) were collated from the literature for pelagic larval duration, pre-competency period, mortality, swimming and homing behaviour, and spawning time (Supplementary Table 2; Fig. 2c,d). We calculated the average connectivity between sites as the proportion of larvae arriving at a site from source reef complexes²³. Due to the broad regional focus and computational requirements, the biophysical dispersal model is based on reefs that are clustered into contiguous or closely adjacent reef complexes³³. Subsequently, discrepancies exist in the spatial scale of reef complexes ($n = 425$ for entire region) and the scale of reef habitat used in spatial planning. The connectivity among reef complexes was upscaled using the method developed by Beger *et al.*³⁴, and the resulting asymmetric connectivity matrices, defined by CV_{ij} for flows l_{ij} between all pairs of planning units i and j in Marxan (CV_{ij} (ref. 24)), provided directional larval dispersal strengths for *P. leopardus* and *H. whitmaei*.

Climate change. A coral reef trajectory model was used to evaluate the effects of ocean acidification and rising temperature on living coral, expressed as coral cover²⁶. Coral reef trajectories were modelled for each 0.5×0.5 -degree cell within the study area. Coral cover was initiated at 30% in the year 1865 and estimated annually to 2050. Coral cover dynamics were captured using two 'typical' Indo-Pacific taxa with branching (*Pocillopora*) and massive (*Porites*) growth forms. Coral cover in each year was predicted from previous years' coral cover plus the combined annual effects of growth and mortality. Mortality was influenced by thermal stress-induced bleaching and growth was influenced by temperature and aragonite effects on calcification. Thermal stress events and aragonite levels were based on global climate model estimates (see below). Because we wanted to model only the impacts of climate change on coral trajectories, we excluded local stressors such as fishing, nutrients and cyclones. Thus, the model essentially integrates the combined spatially variable effects of warming and acidification on the region's corals. The 0.5×0.5 -degree cell resolution was downscaled to the planning unit resolution of 10×10 km by linear interpolation, including coastal areas not modelled in the coral reef trajectory model because they were outside the coarse resolution land mask. Rates of reef decline were calculated as a proportional degradation value from coral cover at present (2010) to that at 2030 (Supplementary Fig. 2e). The rates were used to degrade present coral reef habitats (as used in the rest of the analysis) to obtain new amounts of coral reef habitat per planning unit.

Sea surface temperature (SST) for the years 1865–2055 were based on adjusted output from two AR4 Global Climate Models (CM2.0 and 2.1), using the approach developed by Donner *et al.*³⁵ and Donner³⁶. AR4 GCMs were used because these models have moderate climate sensitivity and have been used for multiple studies of coral reef futures^{36–38}. The projected evolution of SSTs and thermal stress is similar in the recent CMIP5 output³⁹. Thermal stress leading to coral bleaching was estimated from the accumulation of degree heating months (DHMs), a metric commonly used in modelling studies to estimate thermal stress responses on coral reefs. The maximum DHM in each year was calculated as maximum 4-month accumulation of SST in excess of the maximum value from the monthly 1985–2000 SST climatology. The probability of DHM $> x^\circ\text{C} \cdot \text{month}$ (where $x = 1, 2, 3, \dots, 8$) was calculated per year using DHM values from a 10-year moving window for all available model runs. Thus, the DHM exceedence probability is calculated from $n = 80$ (8 model runs \times 10 years) for 1865 through 2000 and $n = 20$ (2 model runs \times 10 years) for 2001–2050.

The saturation state of aragonite (Ω_{ar}) between the years 1860 and 2050 was obtained from the simulations of the University of Victoria Earth System Model (UVic), version 2.8. The same model was used to project future ocean acidification and aragonite saturation state of sea water surrounding coral reefs⁴⁰. Using model simulated fields of dissolved inorganic carbon, alkalinity, SST and salinity, the saturation state of aragonite was computed using the carbonate chemistry routine from the Ocean-Carbon Cycle Model Intercomparison Project (OCMIP), as detailed in Cao and Caldeira⁴⁰. The UVic model has a spatial resolution of 1.8° latitude by 3.6° longitude. The aragonite saturation obtained at this resolution was linearly interpolated to produce annual results at 0.5×0.5 -degree resolution for use by the coral reef trajectory model.

Caveats. Our analyses identified additional broad priority areas for MPA expansion with best available data. Some provinces that did not feature as regional conservation priorities may already be sufficiently protected. It is also possible that they were a low priority because of insufficient data, particularly for FSAs, and turtle data, or they are near the edge of the connectivity models. For example, the provinces in the Solomon Islands did not show up as a high priority in this analysis, not because they are not a priority for conservation, but because there are already many protected areas there, there was insufficient data (for example, on FSA) and it was near the edge of the connectivity models. While some processes, such as dispersal and migration, are particularly relevant to multilateral conservation coordination, local action and maintenance of existing protected areas is crucial to fulfil national and indeed, regional and global conservation goals. The regional conservation priorities presented here are a first step towards fully integrating regional, national and local coral reef management actions in a dynamic and adaptive manner to ensure long-term biodiversity and sustainability benefits.

References

- Mazor, T., Possingham, H. P. & Kark, S. Collaboration among countries in marine conservation can achieve substantial efficiencies. *Divers. Distrib.* **19**, 1380–1393 (2013).
- Kark, S., Levin, N., Grantham, H. S. & Possingham, H. P. Between-country collaboration and consideration of costs increase conservation planning efficiency in the Mediterranean Basin. *Proc. Natl Acad. Sci. USA* **106**, 15368–15373 (2009).
- Pouzols, F. M. *et al.* Global protected area expansion is compromised by projected land-use and parochialism. *Nature* **516**, 383–386 (2014).
- Coral Triangle Initiative on Coral Reefs Fisheries and Food Security (CTI-CFF). *Coral Triangle Marine Protected Area System Framework and Action Plan*. 75 (CTI-CFF, United States Agency for International Development Coral Triangle Support Partnership and US National Oceanic and Atmospheric Administration, 2013).
- White, C., Halpern, B. S. & Kappel, C. V. Ecosystem service tradeoff analysis reveals the value of marine spatial planning for multiple ocean uses. *Proc. Natl Acad. Sci. USA* **109**, 4696–4701 (2012).
- Dawson, T. P., Jackson, S. T., House, J. I., Prentice, I. C. & Mace, G. M. Beyond predictions: biodiversity conservation in a changing climate. *Science* **332**, 53–58 (2011).
- Klein, C. J. *et al.* Trade-offs in marine reserve design: habitat condition, representation, and socioeconomic costs. *Conserv. Lett.* **6**, 324–332 (2013).
- Green, A. L. *et al.* Designing marine reserves for fisheries management, biodiversity conservation, and climate change adaptation. *Coast. Manag.* **42**, 143–159 (2014).
- Venter, O. *et al.* Targeting global protected area expansion for imperiled biodiversity. *PLoS Biol.* **12**, e1001891 (2014).
- Kremen, C. *et al.* Aligning conservation priorities across taxa in Madagascar with high-resolution planning tools. *Science* **320**, 222–226 (2008).
- Venter, O. *et al.* Harnessing carbon payments to protect biodiversity. *Science* **326**, 1368–1368 (2009).
- Halpern, B. S. *et al.* Achieving the triple bottom line in the face of inherent trade-offs among social equity, economic return, and conservation. *Proc. Natl Acad. Sci. USA* **110**, 6229–6234 (2013).
- White, A. T. *et al.* Marine protected areas in the Coral Triangle: progress, issues, and options. *Coast. Manag.* **42**, 87–106 (2014).
- Beger, M., Sommer, B., Harrison, P. L., Smith, S. D. A. & Pandolfi, J. M. Conserving potential coral reef refugia at high latitudes. *Divers. Distrib.* **20**, 245–257 (2014).
- Pandolfi, J. M., Connolly, S. R., Marshall, D. J. & Cohen, A. L. Projecting coral reef futures under global warming and ocean acidification. *Science* **333**, 418–422 (2011).
- Hughes, T. P., Graham, N. A. J., Jackson, J. B. C., Mumby, P. J. & Steneck, R. S. Rising to the challenge of sustaining coral reef resilience. *Trends Ecol. Evol.* **25**, 633–642 (2010).
- Ball, I. R., Possingham, H. P. & Watts, M. in *Spatial Conservation Prioritisation: Quantitative Methods and Computational Tools*. (eds Moilanen, A., Wilson, K. A. & Possingham, H. P.) Chapter 14, 185–195 (Oxford Univ. Press, 2009).
- Margules, C. R. & Pressey, R. L. Systematic conservation planning. *Nature* **405**, 243–253 (2000).

19. Hamilton, R. J., Potuku, T. & Montambault, J. R. Community-based conservation results in the recovery of reef fish spawning aggregations in the Coral Triangle. *Biol. Conserv.* **144**, 1850–1858 (2011).
20. Sadovy de Mitcheson, Y. *et al.* A global baseline for spawning aggregations of reef fishes. *Conserv. Biol.* **22**, 1233–1244 (2008).
21. Hays, G. C., Houghton, J. D. R. & Myers, A. E. Endangered species—Pan-Atlantic leatherback turtle movements. *Nature* **429**, 522–522 (2004).
22. Mumby, P. J. *et al.* Reserve design for uncertain responses of coral reefs to climate change. *Ecol. Lett.* **14**, 132–140 (2011).
23. Trembl, E. A. *et al.* Reproductive output and duration of the pelagic larval stage determine seascape-wide connectivity of marine populations. *Integr. Comp. Biol.* **52**, 525–537 (2012).
24. Beger, M. *et al.* Incorporating functional ecological connectivity into spatial decision making for conservation. *Conserv. Lett.* **3**, 359–368 (2010).
25. McLeod, E. *et al.* Warming seas in the Coral Triangle: coral reef vulnerability and management implications. *Ocean Coast. Manag.* **38**, 518–539 (2010).
26. Wolff, N. H. *et al.* Global inequities between polluters and the polluted: climate change impacts on coral reefs. *Glob. Change Biol.*, doi:10.1111/gcb.13015 (2015).
27. Tittensor, D. P. *et al.* Global patterns and predictors of marine biodiversity across taxa. *Nature* **466**, 1098–1107 (2010).
28. Spalding, M. D. *et al.* Marine ecoregions of the world: a bioregionalization of coastal and shelf areas. *Bioscience* **57**, 573–583 (2007).
29. Burke, L., Reyntar, K., Spalding, M. & Perry, A. *Reefs at Risk—Revisited in the Coral Triangle* 86. (World Resources Institute, 2012).
30. Halpern, B. S. *et al.* A global map of human impact on marine ecosystems. *Science* **319**, 948–952 (2008).
31. Center for International Earth Science Information Network (CIESIN), Columbia University & Centro Internacional de Agricultura Tropical (CIAT). *Gridded Population of the World, Version 3 (GPWv3): Population Density Grid (NASA Socioeconomic Data and Applications Center (SEDAC), Palisades, NY, 2005).*
32. Trembl, E. A., Halpin, P. N., Urban, D. L. & Pratson, L. F. Modeling population connectivity by ocean currents, a graph-theoretic approach for marine conservation. *Landscape Ecol.* **23**, 19–36 (2008).
33. Spalding, M. D., Ravilious, C. & Green, E. P. *World Atlas of Coral Reefs* (University of California Press, 2001).
34. Beger, M. *et al.* Evolving coral reef conservation with genetic information. *Bull. Mar. Sci.* **90**, 159–185 (2014).
35. Donner, S. D., Knutson, T. R. & Oppenheimer, M. Model-based assessment of the role of human-induced climate change in the 2005 Caribbean coral bleaching event. *Proc. Natl Acad. Sci. USA* **104**, 5483–5488 (2007).
36. Donner, S. D. Coping with commitment: projected thermal stress on coral reefs under different future scenarios. *PLoS ONE* **4**, e5712 (2009).
37. Frieler, K. *et al.* Limiting global warming to 2 degrees C is unlikely to save most coral reefs. *Nat. Clim. Change* **3**, 165–170 (2013).
38. Foden, W. B. *et al.* Identifying the world's most climate change vulnerable species: a systematic trait-based assessment of all birds, amphibians and corals. *PLoS ONE* **8**, e65427 (2013).
39. van Hooidonk, R., Maynard, J. A. & Planes, S. Temporary refugia for coral reefs in a warming world. *Nat. Clim. Change* **3**, 508–511 (2013).
40. Cao, L. & Caldeira, K. Atmospheric CO₂ stabilization and ocean acidification. *Geophys. Res. Lett.* **35**, L19609 (2008).
41. Grantham, H. S. *et al.* A comparison of zoning analyses to inform the planning of a marine protected area network in Raja Ampat, Indonesia. *Mar. Policy* **38**, 184–194 (2013).

Acknowledgements

We acknowledge initial discussions with participants of the NCEAS working group 'Coral Triangle prioritization'. This project was supported and embraced by the country representatives of the Coral Triangle Initiative countries. The Permanent Regional Secretariat of the CTI-CFF (www.coraltriangleinitiative.org) is thanked for overall support. We thank members of the Malaysian and Indonesian delegation to the 4th MPA REX meeting in Honiara, Solomon Islands (March 2013) for help with proofing MPA locations in their countries. We thank the Coral Triangle Atlas team for region-wide MPA data. For assistance with Philippines marine reserve data, we thank R. Abesamis, J. Maypa, V. Horique and the University of the Philippines—Marine Science Institute marine reserve team for MPA data, and R. Venegas for updated data and zoning information. The Solomon Islands Locally Managed Marine Area network allowed access to the location of community-managed fishing closures. We thank SCRFA for the use of fish spawning aggregation data and are particularly indebted to Y. Sadovy de Mitcheson. Turtle tracks and habitat data were provided by the WWF Indonesia program and their partners, and additional nesting site data by OBIS-SEAMAP. We thank S. Donner and L. Cao for their contribution of future SST and aragonite predictions to the coral degradation model. We further are grateful to UQ's High Performance Computing Centre for facilitating the connectivity analysis. Funding is acknowledged from the USAID-funded Coral Triangle Support Partnership through the USAID Project: GCP LWA Award # LAG-A-00-99-00048-00. M.B. was supported by an Early Career Research Award to the Centre of Excellence for Environmental Decisions (CE110001014). This article was further supported by Australian Research Council grants and fellowships to H.P.P., an Australian Research Council Discovery Grant (DP140100733) to C.J.K. and by Capturing Coral Reef Ecosystem Services (GEF/UQ) funding and an Australian Research Council Laureate Fellowship to P.J.M.

Author contributions

M.B., A.L.G., C.J.K., P.J.M. and A.T.W. conceived the project. M.B., J.M. and H.P.P. collated data and conducted prioritization analyses. E.A.T., N.H.W. and P.J.M. conceived and implemented connectivity and climate models and analyses. M.B. and J.M. drafted the initial manuscript. All authors contributed to analyses, interpretation and writing of the manuscript.

Additional information

Supplementary Information accompanies this paper at <http://www.nature.com/naturecommunications>

Competing financial interests: The authors declare no competing financial interests.

Reprints and permission information is available online at <http://npg.nature.com/reprintsandpermissions/>

How to cite this article: Beger, M. *et al.* Integrating regional conservation priorities for multiple objectives into national policy. *Nat. Commun.* **6**:8208 doi: 10.1038/ncomms9208 (2015).



This work is licensed under a Creative Commons Attribution 4.0 International License. The images or other third party material in this article are included in the article's Creative Commons license, unless indicated otherwise in the credit line; if the material is not included under the Creative Commons license, users will need to obtain permission from the license holder to reproduce the material. To view a copy of this license, visit <http://creativecommons.org/licenses/by/4.0/>



Minerva Access is the Institutional Repository of The University of Melbourne

Author/s:

Beger, M; McGowan, J; Treml, EA; Green, AL; White, AT; Wolff, NH; Klein, CJ; Mumby, PJ; Possingham, HP

Title:

Integrating regional conservation priorities for multiple objectives into national policy

Date:

2015-09-01

Citation:

Beger, M., McGowan, J., Treml, E. A., Green, A. L., White, A. T., Wolff, N. H., Klein, C. J., Mumby, P. J. & Possingham, H. P. (2015). Integrating regional conservation priorities for multiple objectives into national policy. NATURE COMMUNICATIONS, 6 (1), <https://doi.org/10.1038/ncomms9208>.

Persistent Link:

<http://hdl.handle.net/11343/115945>

File Description:

Published version

License:

CC BY