

Metallomics

Accepted Manuscript

This article can be cited before page numbers have been issued, to do this please use: D. J. Hare, A. Grubman, T. M. Ryan, A. Lothian, J. R. Liddell, R. Grimm, T. Matsuda, P. Doble, R. A. Cherny, A. I. Bush, A. R. White, C. L. Masters and B. R. Roberts, *Metallomics*, 2013, DOI: 10.1039/C3MT00227F.



This is an *Accepted Manuscript*, which has been through the RSC Publishing peer review process and has been accepted for publication.

Accepted Manuscripts are published online shortly after acceptance, which is prior to technical editing, formatting and proof reading. This free service from RSC Publishing allows authors to make their results available to the community, in citable form, before publication of the edited article. This *Accepted Manuscript* will be replaced by the edited and formatted *Advance Article* as soon as this is available.

To cite this manuscript please use its permanent Digital Object Identifier (DOI®), which is identical for all formats of publication.

More information about *Accepted Manuscripts* can be found in the [Information for Authors](#).

Please note that technical editing may introduce minor changes to the text and/or graphics contained in the manuscript submitted by the author(s) which may alter content, and that the standard [Terms & Conditions](#) and the [ethical guidelines](#) that apply to the journal are still applicable. In no event shall the RSC be held responsible for any errors or omissions in these *Accepted Manuscript* manuscripts or any consequences arising from the use of any information contained in them.

Cite this: DOI: 10.1039/c0xx00000x

www.rsc.org/xxxxxx

PAPER

Profiling the iron, copper and zinc content in primary neuron and astrocyte cultures by rapid online quantitative size exclusion chromatography-inductively coupled plasma-mass spectrometry

Dominic J Hare,^{a,b} Alexandra Grubman,^c Timothy M Ryan,^a Amber Lothian,^a Jeffrey R Liddell,^c Rudolf Grimm,^d Toshiaki Matsuda,^e Philip A Doble,^b Robert A Cherny,^a Ashley I Bush,^a Anthony R White,^c Colin L Masters^a and Blaine R Roberts^{*a}

Received (in XXX, XXX) Xth XXXXXXXXX 20XX, Accepted Xth XXXXXXXXX 20XX
DOI: 10.1039/b000000x

Metals often determine the chemical reactivity of the proteins to which they are bound. Each cell in the body tightly maintains a unique metalloproteomic profile, mostly dependent on function. This paper describes an analytical online flow injection quantitative size exclusion chromatography-inductively coupled plasma-mass spectrometry (SEC-ICP-MS) method, which was applied to profiling the metal-binding proteins found in primary cultures of neurons and astrocytes. This method can be conducted using similar amounts of sample to those used for Western blotting (20–150 µg protein), and has a turnaround time of < 15 minutes. Metalloprotein standards for Fe (as ferritin), Cu and Zn (as superoxide dismutase-1) were used to construct multi-point calibration curves for online quantification of metalloproteins by SEC-ICP-MS. Homogenates of primary neuron and astrocyte cultures were analysed by SEC-ICP-MS. Online quantification by external calibration with metalloprotein standards determined the mass of metal eluting from the column relative to time (as pg s⁻¹). Total on-column Fe, Cu and Zn detection limits ranged from 0.825 ± 0.005 ng to 13.6 ± 0.7 pg. Neurons and astrocytes exhibited distinct metalloprotein profiles, featuring both ubiquitous and unique metalloprotein species. Separation and detection by SEC-ICP-MS allows appraisal of these metalloproteins in their native state, and online quantification was achieved using this relatively simple external calibration process.

Introduction

The brain maintains some of the highest concentrations of metals in the body.¹ Free alkali and alkaline earth metals play important roles in the transmission of nerve impulses and signal transduction, whilst transition metals, including Fe, Cu and Zn mediate a variety of cellular functions by way of their unique redox chemistry. Concentrations of these metals in the brain range from 10 to 100 µM, depending on the organelle and cell type in which they are found,² and the brain must tightly regulate the chemical state of these transition metals to ensure oxidative stress via metal-mediated Fenton and Haber-Weiss-type chemistry is controlled. Increasing evidence has suggested improper transition metal metabolism may contribute to the pathogenesis of various neurological disorders, including Alzheimer's and Parkinson's disease, through generation of toxic reactive oxygen species by labile metal ions.³ The source of oxidative stress-inducing metal species is a continuous point of contention with regard to the brain. Fe, Cu and Zn are distributed throughout the brain in a highly compartmentalised manner,⁴ reflective of the diverse roles metal species play across the most complex organ in the body. Indeed, metal distribution is likely to be equally distinct at the cellular

level, both with regard to total metal content and the protein species to which they are bound.

As such, we set out to examine the distribution of Fe, Cu and Zn according to the molecular species in two of the major cell types found throughout the brain: neurons and astrocytes. Interactions between these cell types govern a huge amount of neurophysiological processes, from development to pathology; yet detailed study of the chemistry surrounding the relationship of these two integral cells has been somewhat limited by the lack of suitably sensitive analytical techniques. Rapid improvements to analytical technology have helped remove a key challenge to understanding both the nature of brain function and how it is compromised in disease. Cahoy *et al.*⁵ recently applied both fluorescence-activated cell sorting and GeneChip Array technology to profile the transcriptome of neurons, astrocytes and oligodendrocytes, finding that the genetic characteristics of the latter two cell types were so markedly different that previous generic classification of them both as 'glia' is likely insufficient. Yang *et al.*⁶ used a proteomic approach to characterise the diversity of chemical species in rat cerebellar neurons and astrocytes, identifying both concurrent and unique proteins in both cell types, presented in a reference database. Both studies identified a range of cellular markers that more distinctly

differentiate astrocytes and neurons then the traditional glial fibrillary acidic protein (GFAP) marker.

Thus, there is little doubt that the metalloproteomic profile of neurons and astrocytes contains unique information regarding the host cell type. Further, proteins that have been implicated in neurological diseases have also been suggested to play roles in metal metabolism, such as the Zn and Cu interactions with prion protein (PrP)⁷ and proposed role of ionic Zn and Cu in the aggregation of β -amyloid (A β) in Alzheimer's disease.^{3, 8} However, the ubiquity of trace metals (Fe, Cu and Zn in particular) in the cell, as well as the relatively weak intermolecular forces governing metal-protein ligands presents an analytical challenge to achieving separation and detection of physiologically-relevant species.⁹⁻¹¹ Only fractionation of complex biological mixtures, usually via chromatographic separation, can provide clues as to whether changes in metal levels observed in neurological tissues are global or confined to a particular protein, and this protocol must ensure that metal-protein ligands are preserved. Lelie *et al.*¹² recently used such an approach to show that Cu,Zn-superoxide dismutase (SOD-1) metallation status, specifically the absence of Cu, was an identifying feature of familial amyotrophic lateral sclerosis (ALS).

Here, we employed native separation using size exclusion chromatography (SEC) hyphenated to ICP-MS for detection of metal cofactors according to molecular weight of the eluting biomolecules. Coupling SEC to elemental detection itself is not a new analytical technique; the first featured examples, reported in the 1980s, used atomic absorption¹³ and atomic emission spectrometry¹⁴ to detect trace metals in various biological fluids. Since then, a number of examples of SEC hyphenated to mass specific detection have been used to study trace metals in a variety of physiological and disease states, including rat serum,¹⁵ cancerous human thyroid tissue,¹⁶ murine neurological tissue¹⁷ and platinum-treated human blood products¹⁸ to name just a few. A common theme to these foundation papers is lengthy runtimes and difficulties in acquiring truly quantitative data. Using standard metalloproteins, we were able to absolutely quantify the metal content of each eluting species, and have suggested the possible biological molecules associated with specific metal ions. We present a method that is well suited to high throughput analysis of biological samples relevant to the emerging field of metalloproteomics¹⁹ using minimal sample volumes and rapid chromatographic separations.

Experimental

Chemicals and standards

SOD-1 (Cu,Zn) and ferritin (Fe; Sigma Aldrich, Castle Hill, Australia) protein standards were used for metal quantification. Ammonium nitrate buffers were prepared fresh daily using MiliQ (18.2 M Ω) H₂O. All samples undergoing solution ICP-MS analysis for bulk metal content were diluted to volume in 1% (v/v) Suprapur HNO₃. SEC column calibration was performed using molecular weight standards for ferritin (MW = 450 kDa), ceruloplasmin (MW = 151 kDa), conalbumin (MW = 75 kDa; GE Healthcare, Rydalmere, Australia), SOD-1 (MW = 32 kDa (dimer)) and metallothionein IIa (MW = 6.5 kDa).

Table 1: Typical operational SEC-ICP-MS parameters

Agilent 1200 LC	
Mobile phase	0.2 M NH ₄ NO ₃ (pH 7.7-7.8)
Column type	Agilent Bio-SEC 3
Particle size	3 μ m
Pore size	150 \AA
Flow rate	mL min ⁻¹
Injection volume	1-100 μ L (100 μ g total protein)
Column dimensions	4.6 mm (i.d.) x 150 mm
Agilent 7700x ICP-MS	
RF power	1550 W
Sample depth	8.0 mm
Carrier gas	0.95 L min ⁻¹
Makeup gas	0.20 L min ⁻¹
Spray chamber temperature	7 $^{\circ}$ C
Extracts 1, 2	-12, -200 V
Omega bias, lens	-95, 8.3 V
Deflect, plate bias	2.2, -60 V
Cell entrance, exit	-38, -68 V
Ocotople bias, RF	-18.0, 200 V
Collision gas	He, 3.4 mL min ⁻¹

Liquid chromatography-inductively coupled plasma-mass spectrometry

We used an Agilent Technologies 1200 liquid chromatography system (Mulgrave, Australia) with the eluent directly inserted into a standard perfluoroalkoxy (PFA) concentric design nebuliser via polyethyl ether ketone (PEEK) tubing (o.d. 1.58 mm; i.d. 0.13 mm). The nebuliser was fitted to an Agilent Technologies 7700x ICP-MS. Helium was used as a collision gas to remove polyatomic interferences. Separations were performed on an Agilent Technologies Bio-SEC 3 size exclusion column (3 μ m particle size; 150 \AA pore structure; 4.6 mm i.d.) with a 200 mM ammonium nitrate buffer (pH 7.7-7.8). The ICP-MS was tuned daily using solution nebulisation of a 1 μ g L⁻¹ Li, Co, Y, Ce and Tl standard. Typical operating parameters of the SEC-ICP-MS system are given in Table 1.

External calibration

SOD-1 and ferritin standards were prepared fresh prior to analysis. Standards were reconstituted in 0.1 M phosphate buffered saline (PBS) and total metal content was determined by bulk ICP-MS analysis. Total metal loading on column was controlled by varying the injection volume from 3 to 75 μ L. The area under baseline-corrected peaks was integrated using Prism 5 (GraphPad, La Jolla, USA) and used to construct multi-point calibration curves for each measured mass. Linear regression analysis was used to convert signal intensity (counts per second) to picogram of metal per second.

Primary cell cultures

Primary murine culture protocols were approved by the University of Melbourne Biosciences Animal Ethics Committee (approval number 1011753.4). For primary cortical cultures, E14 mouse cortices were removed, dissected free of meninges and dissociated in 0.025% trypsin. Viable dissociated cells were suspended in Minimum Eagle's Medium supplemented with 10% fetal bovine serum, 5% horse serum, 1% glutamine, and 10 μ g mL⁻¹ gentamicin, plated into poly-L-lysine coated 6 well culture plates (1.5 x 10⁶ cells per well), and incubated at 37 $^{\circ}$ C in 5%

Cite this: DOI: 10.1039/c0xx00000x

www.rsc.org/xxxxxx

PAPER

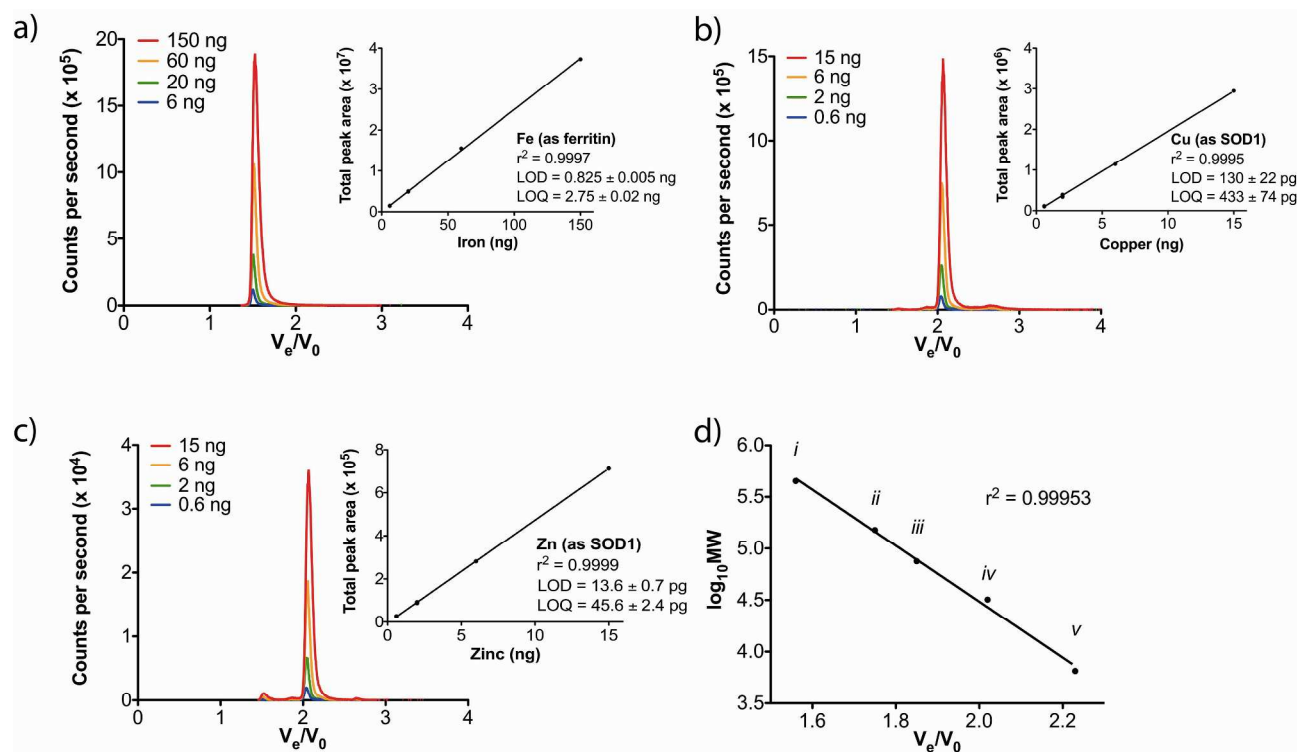


Fig. 1: External calibration procedure for (a) Fe, (b) Cu and (c) Zn by SEC-ICP-MS. Total metal injected onto the SEC column was controlled by increasing the injection volume of a known metalloprotein standard (ferritin for Fe; SOD-1 for Cu and Zn). Integration of the total area under curve (AUC) for each injection was used to perform linear regression analysis against the total metal injected, allowing conversion of ICP-MS signal output to $\mu\text{g s}^{-1}$. (d) SEC column was calibrated using ferritin (i; MW = 450 kDa), ceruloplasmin (ii; MW = 151 kDa), conalbumin (iii; MW = 75 kDa), SOD-1 (iv; MW = 32 kDa) and metallothionein IIa (v; MW = 6.5 kDa).

CO_2 . Growth medium was replaced with Neurobasal growth medium supplemented with 2% B27, 1% glutamine and $10 \mu\text{g mL}^{-1}$ gentamicin the following day. 3-4 days after plating, half of the media was replaced with fresh Neurobasal media. Cells were used for experiments 6 days after plating.

For astrocyte cultures, neonatal mice were decapitated and whole brains were removed and placed into ice-cold preparation buffer (containing 8 g L^{-1} NaCl, 400 mg L^{-1} KCl, 30 mg L^{-1} KH_2PO_4 , 24 mg L^{-1} Na_2HPO_4 , 20 g L^{-1} sucrose, 1 g L^{-1} glucose, 200 U mL^{-1} penicillin and $200 \mu\text{g mL}^{-1}$ streptomycin). Brains were sequentially passed through $250 \mu\text{m}$ and $135 \mu\text{m}$ gauze and centrifuged at 500 g for 5 min. Cell pellets were resuspended in growth medium (high glucose DMEM containing 10% fetal bovine serum, 50 U mL^{-1} penicillin and $50 \mu\text{g mL}^{-1}$ streptomycin) and plated in 6 well plates at 1.5×10^6 cells per well. Cells were maintained at $37 \text{ }^\circ\text{C}$ with 10% CO_2 . Growth medium was replaced at 7 and 14 days, and experiments were performed after 16 days *in vitro*.

Sample preparation and analysis

Pellets of cultured neurons and astrocytes were resuspended in Tris-buffered saline (TBS; 50 mM Tris, 150 mM NaCl; pH 8.0)

with added EDTA-free protease inhibitors (Roche, Castle Hill, Australia) and homogenized by 6 passes through a 26-gauge needle. The homogenate was then centrifuged at $13,200 \text{ g}$ for 5 minutes and the supernatant recovered. Injection volumes were standardised according to total protein content (UV absorbance at 280 nm) of the sample (c.a. $10 \mu\text{g } \mu\text{L}^{-1}$) measured by a NanoDrop spectrophotometer (ThermoFisher Scientific, Victoria, Australia). Samples were kept at $4 \text{ }^\circ\text{C}$ prior to injection using a Peltier-cooled autosampler. Each injection contained approximately 100 μg of total protein.

Results and discussion

Analytical performance

External calibration using multiple injections of metalloprotein standards enabled us to quantify both the total metal content in individual SEC-ICP-MS separations and the eluting metal concentration in pg s^{-1} .²⁰ Injection volumes ranged from 3 to 75 μL , for effective loading of 6-150 ng of Fe and 0.6-15 ng of Cu and Zn, which was in turn used to perform external calibration by linear regression with good linearity ($r^2 > 0.999$) for the three measured masses (Fig. 1a-c). Limits of analysis were determined

Cite this: DOI: 10.1039/c0xx00000x

www.rsc.org/xxxxxx

PAPER

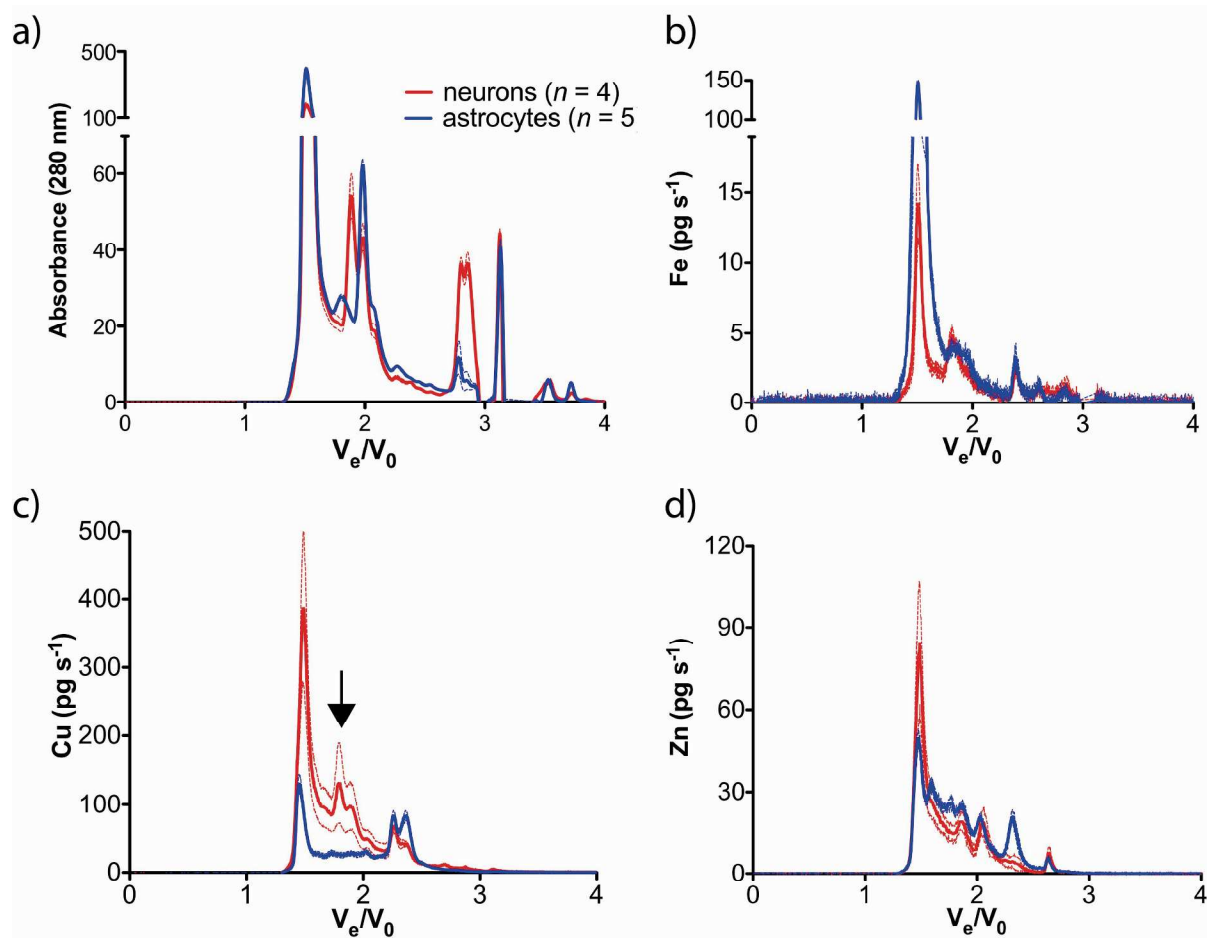


Fig. 2: (a) UV absorbance trace (280 nm), (b) Fe, (c) Cu and (d) Zn chromatograms from neuron (red line) and astrocyte (blue line) cultures. Dashed line = ± 1 standard deviation, $n = 4$ (neurons) and $n = 5$ (astrocytes). Black arrow denotes Cu-binding Cp ($V_e/V_0 = 1.74$).

using 3σ for limit of detection (LOD) and 10σ for limit of quantification (LOQ) for total metal loaded on column. For Fe, LOD and LOQ were 0.825 ± 0.005 ng and 2.75 ± 0.02 ng, respectively, equivalent to 14.8 ± 0.1 pmoles and 49.2 ± 0.4 pmoles. Cu and Zn returned LOD and LOQ values of 130 ± 22 pg (2.05 ± 0.35 pmoles) and 433 ± 74 pg (6.81 ± 1.16 pmoles); and 13.6 ± 0.7 pg (0.21 ± 0.01 pmoles) and 45.6 ± 2.4 pg (0.70 ± 0.04 pmoles), respectively. Repeated injections of 20 ng Fe (as ferritin) and 2.0 ng Cu and Zn (as SOD-1) ($n = 4$) returned coefficients of variation of 1.28%, 7.26%, and 2.40%. Calibration of the SEC column using Fe-, Cu- and Zn-binding metalloproteins returned good linearity for unknown molecular weight determination (Fig. 1d).

This quantitative SEC-ICP-MS method is well suited to high throughput analysis. The shorter column (150 mm) than previous SEC-ICP-MS methods allows for smaller injection volumes (1-100 μ L per injection) and reduced turnaround time per sample (<15 min).

Table 2: Fe, Cu and Zn concentration (per mg total protein) in neuron and astrocyte cultures.

	Neurons ($n = 4$)		Astrocytes ($n = 5$)	
	ng mg ⁻¹	nmol mg ⁻¹	ng mg ⁻¹	nmol mg ⁻¹
Fe	$7.31 \pm 0.90^*$	$0.131 \pm 0.016^*$	$27.7 \pm 2.0^*$	$0.497 \pm 0.037^*$
Cu	200 ± 30	3.15 ± 0.47	105 ± 9	1.66 ± 0.14
Zn	29.1 ± 3.8	0.445 ± 0.058	47.7 ± 3.3	0.730 ± 0.050

* below limit of quantification, indication only

25 Quantification of metal content of neurons and astrocytes

Chromatograms for each measured mass were normalised to the total peak area of the 280 nm absorbance trace (in addition to pre-injection standardisation using absorbance at 280 nm measured by UV-Vis spectroscopy), and thereby total protein content to confirm equivalent mass loading onto the SEC column. The total peak area for each measured mass was used to determine the total metal loading on column, and thus the concentration of metal in the homogenate per 1 mg of total protein loaded (Table 2). This

Cite this: DOI: 10.1039/c0xx00000x

www.rsc.org/xxxxxx

PAPER

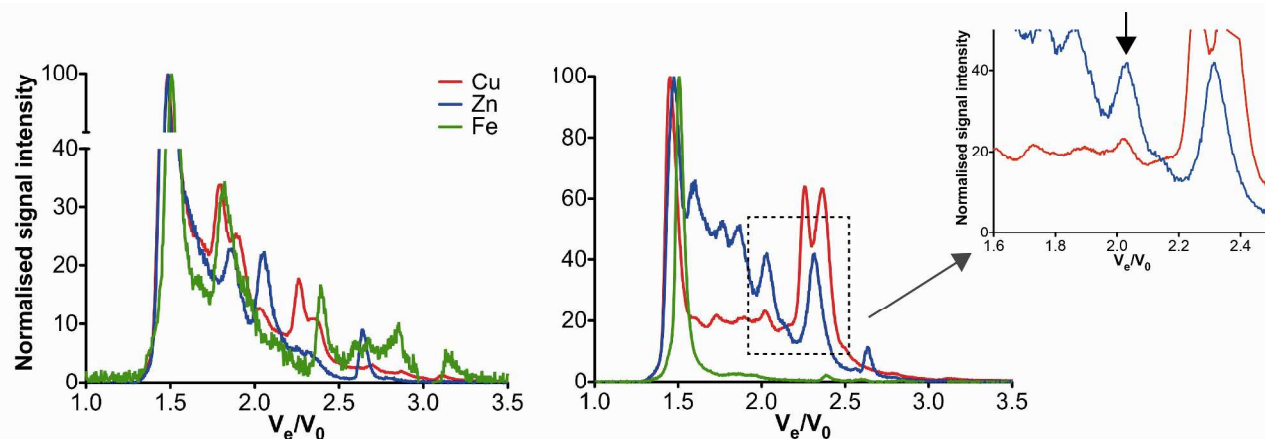


Fig. 3: Overlay of normalised Fe, Cu and Zn traces for cultured neurons (left) and astrocytes (right). Inset: Cu and Zn peak at $V_e/V_0 = 2.02$ in astrocytes corresponds to SOD-1 homodimer (MW 32 kDa; black arrow).

approach allows for both speciation of metalloproteins and assay
 5 of the total metal content of cells. Interestingly, the total Fe
 content of both neuronal and astrocytic cultures was lower than
 Cu and Zn, even though Fe is generally at a higher concentration
 in brain tissue,²¹ suggesting that either high brain Fe is sourced
 from other cell types, such as Fe-rich oligodendrocytes,²² or that
 10 typical cell culturing conditions are Fe-deficient. In fact, we have
 previously observed that increase in astrocyte uptake of free Fe in
 metal-enriched (as ferric ammonium citrate; FAC) was as much
 as 20-fold²³, while cellular uptake of ionic Cu and Zn was
 minimal^{24, 25}. The Fe content of both cell types was comparable,
 15 however, to previously reported values using alternative
 quantitative techniques, such as the ferrozine-based colourimetric
 assay²⁶ and atomic absorption spectroscopy.²⁷ Similarly, the Cu
 content of astrocytes²⁸ and neurons²⁹ was also analogous to
 previous reports, as was the basal level of Zn in both cell types
 20 compared to other cell culture studies.^{30, 31} In general, astrocytes
 contained a greater concentration of both Fe and Zn than neurons,
 while neurons contained around twice the Cu concentration to
 that of astrocytes.

The method presented here demonstrates several significant
 25 advances in LC-ICP-MS separation and detection. Quantification
 of eluting metals has previously required bulk assay of collected
 fractions,³² which further weakens the already poor separation
 resolution experienced with native SEC separation. Online
 quantification via flow-injection calibration of standard
 30 metalloproteins allows for determination of the amount of metal
 eluting from the column on a per-point basis. The half-peak width
 of moderately abundant metalloproteins was typically around 20
 s, equivalent to approximately 14 points per peak. Integration of
 the area under curve (AUC) for each peak can feasibly be used to
 35 quantify total metal loading on species-specific metalloproteins,
 adding to available options including quantification via isotope-
 dilution ICP-MS.³³⁻³⁵

Diversity in metalloproteins between cell types

Neurons and astrocytes predictably display a diverse range of
 metalloprotein species (Fig. 2,3). The Fe-binding species of
 40 neurons and astrocytes were generally comparable, with major
 Fe-containing peaks observed at approximately V_e/V_0 (ratio of
 elution volume to void) = 1.55 (MW = 450 kDa) and $V_e/V_0 = 1.84$
 (MW = 80 kDa), as well as low mass species eluting after the
 45 total column volume (V_T ; MW < 0.5 kDa). As expected, the
 majority of Fe in both cell types is likely associated with high
 molecular weight ferritin ($V_e/V_0 = 1.55$; MW = 450 kDa), and
 astrocytes were observed to contain as much as 10 times more
 ferritin-bound Fe than neurons. Ferritin is ubiquitously expressed
 50 in both neurons and astrocytes, the amount of which differs
 depending on both brain region³⁶ and Fe homeostatic
 requirements.³⁷ The peak at $V_e/V_0 = 1.84$ (MW = 80 kDa) is likely
 to be indicative of the major Fe-transport protein transferrin.

Ceruloplasmin (Cp; $V_e/V_0 = 1.74$; MW 151 kDa) accounts for
 55 over 90% of circulating Cu and plays a major role in brain Fe
 metabolism.³⁸ Interestingly, this protein was observed almost
 exclusively in neurons (see Fig. 2). Immunohistochemical studies
 of Cp in brain sections has previously identified expression in
 both cell types,³⁹ and it is unclear as to why cultured astrocytes
 60 do not display a Cu peak corresponding to Cp. A variety of Cu-
 binding proteins and peptides have been identified in astrocytes,
 including transporters (Copper transporter receptor 1 – Ctr1;
 divalent metal transporter 1 – DMT1; ATP7A), intracellular
 traffickers (SOD-1, copper chaperone for superoxide dismutase –
 65 CSS; ATOX1, Cox17), and storage and detoxifiers
 (metallothioneins – MTs).⁴⁰ Both cell types, though more
 pronounced in astrocytes, showed colocalised Cu and Zn peaks,
 reflective of SOD-1 homodimer (see Fig. 3) at $V_e/V_0 = 2.02$ (MW
 = 32 kDa). A common Cu-binding protein is observed in both cell
 70 types at $V_e/V_0 = 2.26$ (MW = 6 kDa) that may be attributable to
 either MTIIa (per the standard protein) or small cuproproteins,

such as Cox17 and ATOX1.⁴¹ An extremely small peak is observed in astrocytes at $V_e/V_0 = 1.71$ (MW = 178 kDa) may be indicative of Ctr1.²⁸

The Zn profile in both cell types was generally similar, with the exception of a major Zn binding protein at $V_e/V_0 = 2.32$ (MW = 4.1 kDa) in astrocytes not identified in neurons. A similar Cu-containing peak at $V_e/V_0 = 2.36$ (MW = 3.2 kDa) is also observed in astrocytes. These peaks are thought to represent astrocytic expression of MT isoforms, which are high affinity Zn (and Cu) binders expressed in this cell type that play an important role in the response to neuronal injury.⁴²⁻⁴⁴ *In situ* hybridization, radioimmunoassay and immunohistochemistry has previously identified MT-I and -II expression in glia and ependymal cell cultures.⁴⁵

Growth conditions of both cell types may influence the metalloprotein profile. Neurons were grown in serum-free Neurobasal medium (following an initial period on serum-containing media), whilst astrocytes were grown in 10% fetal bovine serum. This difference may account for differing protein expression, though this also reflects the different extracellular environments each cell type would maintain *in vivo*. Regardless, growing either cell type in a consistent serum-rich or serum-free environment would only serve to produce unviable cells, which would undoubtedly produce an artificial affect on protein diversity. This approach has greater utility in studying the cellular response to metal dyshomeostasis: further work will examine shifts in metalloprotein species following the addition of bioavailable metals. However, a possible avenue of investigation could use a transient/separable co-culture system (reviewed by Miki *et al.*⁴⁶) in order to expose cells to the same growth media.

Global versus targeted metalloproteomics

The typical approach to metalloprotein analysis can best be described as a targeted method, where specific purification and sample cleanup steps precede direct measurement of a known species via electrospray MS, such as metallation status of SOD-1 in ALS spinal cord tissue^{47, 48} and heavy metal-binding MT isoforms in hepatic and renal tissue⁴⁹⁻⁵¹ (see Eve Roberts' review⁵² for a comprehensive synopsis of targeted metalloproteomic strategies from the perspective of hepatic disorders). The approach described here provides a 'global' evaluation for comparative biology across a broad mass range, which allows for rapid identification of either generalised metal deficiency (as we observed with respect to Fe) or changes in a specific metal-binding peak, which may be a candidate for a more targeted metalloproteomic assay. For specific conditions, such as familial ALS where metallation status of the abundant metalloenzyme is impaired, this approach provides not only sufficient native chromatographic resolution to isolate SOD-1, but also provides an accurate quantification method that can be related to protein-metal stoichiometry. As such, this rapid quantitative technique has the potential to play an important role in the study of disorders involving impairment to metal metabolism.

Conclusions

Primary cultures of murine neurons and astrocytes contain a wide range of metalloproteins, which can be quantified with relative

simplicity using native SEC hyphenated to ICP-MS and a range of metalloprotein standards. Native chromatography allows direct detection of metal cofactors in a non-denaturing environment, ensuring that the relatively weak interactions typical of protein-metal complexes are preserved. Online quantitative SEC-ICP-MS extends the capabilities of hyphenated techniques to allow direct detection and quantification of metal cofactors, thus allowing meaningful biological comparison of the role of the metalloproteome in health and disease.

Acknowledgements

Funding for this project was provided by the Australian Research Council, Victorian Government's Operational Infrastructure Support program and National Health and Medical Research Council. We wish to thank Professor Adrian West of the University of Tasmania for providing metallothionein Ila standards.

Notes and references

^a The Florey Institute of Neuroscience and Mental Health, The University of Melbourne, Kenneth Myer Building, 30 Royal Parade, Parkville, Victoria, 3052, Australia. Tel: +61 3 9035 6635; E-mail: blaine.roberts@florey.edu.au

^b Elemental Bio-imaging Facility, University of Technology, Sydney, Broadway, New South Wales, Australia

^c Centre for Neuroscience & Department of Pathology, The University of Melbourne, Parkville, Victoria, Australia

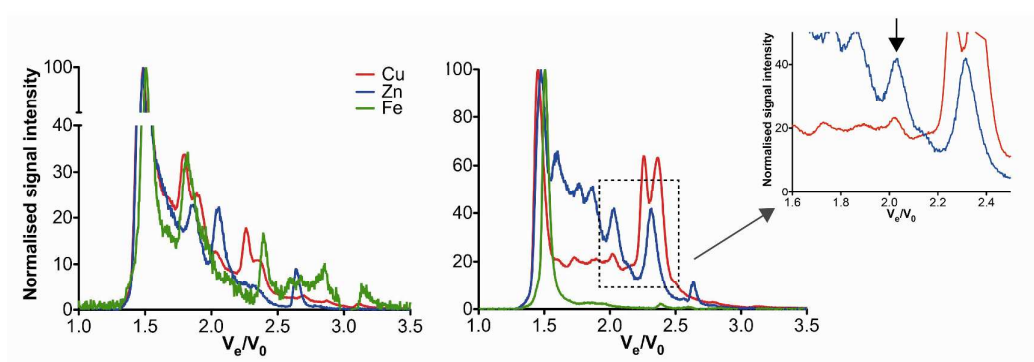
^d Agilent Technologies, Santa Clara, California, United States of America

^e Agilent Technologies, Tokyo, Japan

1. L. Zecca, R. Pietra, C. Goj, C. Mecacci, D. Radice and E. Sabbioni, *J. Neurochem.*, 1994, **62**, 1097-1101.
2. R. R. Crichton, D. T. Dexter and R. J. Ward, *Coord. Chem. Rev.*, 2008, **252**, 1189-1199.
3. B. R. Roberts, T. M. Ryan, A. I. Bush, C. L. Masters and J. A. Duce, *J. Neurochem.*, 2011, **120**, 149-166.
4. D. J. Hare, J. K. Lee, A. D. Beavis, A. van Gramberg, J. George, P. A. Adlard, D. I. Finkelstein and P. A. Doble, *Anal. Chem.*, 2012, **84**, 3990-3997.
5. J. D. Cahoy, B. Emery, A. Kaushal, L. C. Foo, J. L. Zamanian, K. S. Christopherson, Y. Xing, J. L. Lubischer, P. A. Krieg, S. A. Krupenko, W. J. Thompson and B. A. Barres, *J. Neurosci.*, 2008, **28**, 264-278.
6. J.-W. Yang, R. Rodrigo, V. Felipe and G. Lubec, *J. Proteome Res.*, 2005, **4**, 768-788.
7. F. Stellato, A. Spevacek, O. Proux, V. Minicozzi, G. Millhauser and S. Morante, *Eur. Biophys. J.*, 2011, **40**, 1259-1270.
8. P. Giannozzi, K. Jansen, G. L. Penna, V. Minicozzi, S. Morante, G. Rossi and F. Stellato, *Metallomics*, 2012, **4**, 156-165.
9. H. Haraguchi, *J. Anal. Atom. Spectrom.*, 2004, **19**, 5.
10. A. Lothian, D. J. Hare, R. Grimm, T. M. Ryan, C. L. Masters and B. R. Roberts, *Front. Aging Neurosci.*, 2013, **5**.
11. A. Sanz-Medel, *Spectrochim. Acta B*, 1998, **53**, 197.
12. H. L. Lelie, A. Liba, M. W. Bourassa, M. Chattopadhyay, P. K. Chan, E. B. Gralla, L. M. Miller, D. R. Borchelt, J. S. Valentine and J. P. Whitelegge, *J. Biol. Chem.*, 2011, **286**, 2795-2806.
13. P. E. Gardiner, E. Rosick, U. Rosick, P. Bratter and G. Kynast, *Clin. Chim. Acta*, 1982, **120**, 103.
14. P. E. Gardiner, P. Braetter, B. Gercken and A. Tomiak, *J. Anal. Atom. Spectrom.*, 1987, **2**, 375-378.
15. B. Gercken and R. M. Barnes, *Anal. Chem.*, 1991, **63**, 283-287.
16. S. F. Boulyga, V. Loreti, J. Bettmer and K. G. Heumann, *Anal. Bioanal. Chem.*, 2004, **380**, 198-203.
17. S. Kameo, K. Nakai, N. Kurokawa, T. Kanehisa, A. Naganuma and H. Satoh, *Anal. Bioanal. Chem.*, 2005, **381**, 1514-1519.

18. J. G. Morrison, P. White, S. McDougall, J. W. Firth, S. G. Woolfrey, M. A. Graham and D. Greenslade, *J. Pharmaceut. Biomed.*, 2000, **24**, 1.
19. S. A. Manley and J. Gailer, *Expert Rev. Proteomic.*, 2009, **6**, 251-265.
20. C. S. Muñoz, J. M. M. Gayón, J. I. G. Alonso and A. Sanz-Medel, *J. Anal. Atom. Spectrom.*, 2001, **16**, 587-592.
21. M. Schrag, A. Dickson, A. Jiffry, D. Kirsch, H. V. Vinters and W. Kirsch, *Biomaterials*, 2010, **23**, 1123-1127.
22. B. Todorich, X. Zhang and J. R. Connor, *Glia*, 2011, **59**, 927-935.
23. J. R. Liddell, D. Obando, J. Liu, G. Ganio, I. Volitakis, S. San Mok, P. J. Crouch, A. R. White and R. Codd, *Free Rad. Biol. Med.*, 2013.
24. P. S. Donnelly, A. Caragounis, T. Du, K. M. Laughton, I. Volitakis, R. A. Cherny, R. A. Sharples, A. F. Hill, Q. X. Li, C. L. Masters, K. J. Barnham and A. R. White, *J. Biol. Chem.*, 2008, **283**, 4568-4577.
25. C. Duncan, L. Bica, P. J. Crouch, A. Caragounis, G. E. Lidgerwood, S. J. Parker, J. Meyerowitz, I. Volitakis, J. R. Liddell and R. Raghupathi, *Metallomics*, 2013.
26. G. M. Bishop, T. N. Dang, R. Dringen and S. R. Robinson, *Neurotox. Res.*, 2010, **19**, 443-451.
27. J. Riemer, H. H. Hoepken, H. Czerwinska, S. R. Robinson and R. Dringen, *Anal. Biochem.*, 2004, **331**, 370-375.
28. I. F. Scheiber, J. F. B. Mercer and R. Dringen, *Neurochem. Int.*, 2010, **56**, 451-460.
29. S. A. Bellingham, G. D. Ciccotosto, B. E. Needham, L. R. Fodero, A. R. White, C. L. Masters, R. Cappai and J. Camakaris, *J. Neurochem.*, 2004, **91**, 423-428.
30. C. T. Sheline, T. Takata, H. Ying, L. M. T. Canzoniero, A. Yang, S. P. Yu and D. W. Choi, *Glia*, 2004, **46**, 18-27.
31. G. G. Mackenzie, M. P. Zago, C. L. Keen and P. I. Oteiza, *J. Biol. Chem.*, 2002, **277**, 34610-34617.
32. C. Ferrarello, M. R. Fernández de la Campa and A. Sanz-Medel, *Anal. Bioanal. Chem.*, 2002, **373**, 412-421.
33. T. Konz, M. Montes-Bayon and A. Sanz-Medel, *Anal. Chem.*, 2012, **84**, 8133-8139.
34. I. Konz, B. Fernández, M. L. Fernández, R. Pereiro and A. Sanz-Medel, *Anal. Bioanal. Chem.*, 2012, **403**, 2113-2125.
35. T. Konz, E. Añón-Alvarez, M. Montes-Bayón and A. Sanz-Medel, *Anal. Chem.*, 2013.
36. S. A. Benkovic and J. R. Connor, *J. Comp. Neurol.*, 1993, **338**, 97-113.
37. J. Han, J. R. Day, J. R. Connor and J. L. Beard, *J. Nutr.*, 2002, **132**, 2769-2774.
38. V. Desai and S. G. Kaler, *Am. J. Clin. Nutr.*, 2008, **88**, 855S-858S.
39. Y.-W. Li, L. Li and J.-Y. Zhao, *Neurosci. Bull.*, 2008, **24**, 13-20.
40. I. F. Scheiber and R. Dringen, *Neurochem. Int.*, 2013, **62**, 556-565.
41. K. M. Davies, D. J. Hare, V. Cottam, N. Chen and L. Hilgers, *Metallomics*, 2013, **5**, 43-51.
42. R. S. Chung, P. A. Adlard, J. Dittmann, J. C. Vickers, M. I. Chuah and A. K. West, *J. Neurochem.*, 2003, **88**, 454-461.
43. I. Miyazaki, M. Asanuma, H. Hozumi, K. Miyoshi and N. Sogawa, *FEBS Lett.*, 2007, **581**, 5003-5008.
44. I. Miyazaki, M. Asanuma, Y. Kikkawa, M. Takeshima, S. Murakami, K. Miyoshi, N. Sogawa and T. Kita, *Glia*, 2010, **59**, 435-451.
45. B. A. Masters, C. J. Quafe, J. C. Erickson, E. J. Kelly, G. J. Froelick, B. P. Zambrowicz, R. L. Brinster and R. D. Palmiter, *J. Neurosci.*, 1994, **14**, 5844-5857.
46. Y. Miki, K. Ono, S. Hata, T. Suzuki, H. Kumamoto and H. Sasano, *J. Steroid Biochem.*, 2012, **131**, 68-75.
47. T. W. Rhoads, N. I. Lopez, D. R. Zollinger, J. T. Morré, B. L. Arbogast, C. S. Maier, L. DeNoyer and J. S. Beckman, *Anal. Biochem.*, 2011, **415**, 52-58.
48. T. W. Rhoads, J. R. Williams, N. I. Lopez, J. T. Morré, C. S. Bradford and J. S. Beckman, *J. Am. Soc. Mass Spectrom.*, 2013, **24**, 115-124.
49. K. Das, V. Jacob and J. M. Bouquegneau, *Comp. Biochem. Phys. C*, 2002, **131**, 245-251.
50. H. Chassaigne and R. Lobinski, *Analyst*, 1998, **123**, 2125-2130.
51. H. Chassaigne and R. Łobiński, *J. Chromatogr. A*, 1998, **829**, 127-136.
52. E. A. Roberts, *Metallomics*, 2012, **4**, 633.

Graphical Abstract



A fully quantitative SEC-ICP-MS approach to globally studying metalloproteins in cell cultures.

Minerva Access is the Institutional Repository of The University of Melbourne

Author/s:

Hare, DJ; Grubman, A; Ryan, TM; Lothian, A; Liddell, JR; Grimm, R; Matsuda, T; Doble, PA; Cherny, RA; Bush, AI; White, AR; Masters, CL; Roberts, BR

Title:

Profiling the iron, copper and zinc content in primary neuron and astrocyte cultures by rapid online quantitative size exclusion chromatography-inductively coupled plasma-mass spectrometry

Date:

2013-01-01

Citation:

Hare, D. J., Grubman, A., Ryan, T. M., Lothian, A., Liddell, J. R., Grimm, R., Matsuda, T., Doble, P. A., Cherny, R. A., Bush, A. I., White, A. R., Masters, C. L. & Roberts, B. R. (2013). Profiling the iron, copper and zinc content in primary neuron and astrocyte cultures by rapid online quantitative size exclusion chromatography-inductively coupled plasma-mass spectrometry. *METALLOMICS*, 5 (12), pp.1656-1662. <https://doi.org/10.1039/c3mt00227f>.

Persistent Link:

<http://hdl.handle.net/11343/58836>

File Description:

Accepted version