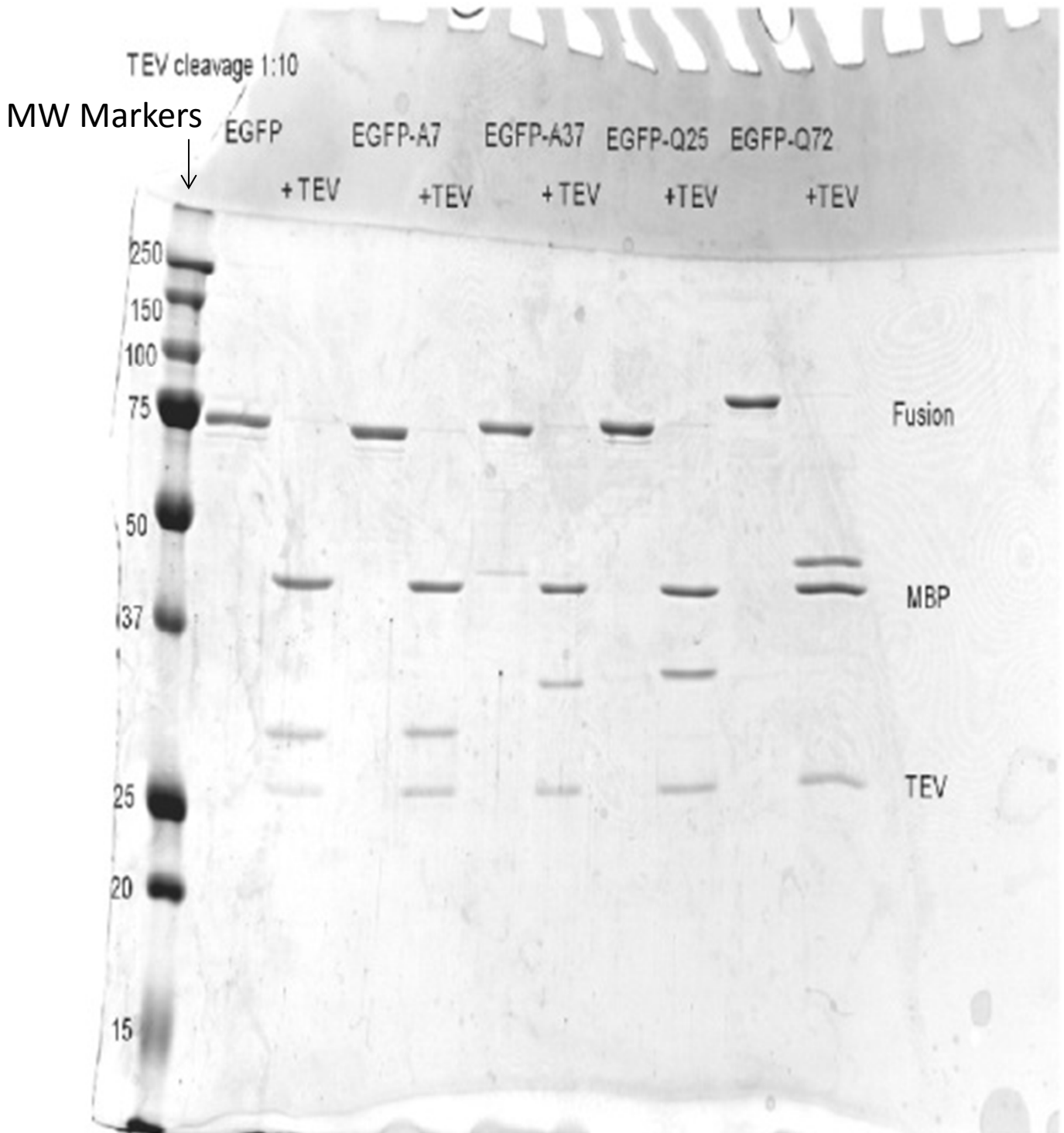


Uncropped gel from Figure 1a





Minerva Access is the Institutional Repository of The University of Melbourne

**Author/s:**

Polling, S; Ormsby, AR; Wood, RJ; Lee, K; Shoubridge, C; Hughes, JN; Thomas, PQ; Griffin, MDW; Hill, AF; Bowden, Q; Boecking, T; Hatters, DM

**Title:**

Polyalanine expansions drive a shift into alpha-helical clusters without amyloid-fibril formation

**Date:**

2015-12-01

**Citation:**

Polling, S., Ormsby, A. R., Wood, R. J., Lee, K., Shoubridge, C., Hughes, J. N., Thomas, P. Q., Griffin, M. D. W., Hill, A. F., Bowden, Q., Boecking, T. & Hatters, D. M. (2015). Polyalanine expansions drive a shift into alpha-helical clusters without amyloid-fibril formation. NATURE STRUCTURAL & MOLECULAR BIOLOGY, 22 (12), pp.1008-1015. <https://doi.org/10.1038/nsmb.3127>.

**Persistent Link:**

<http://hdl.handle.net/11343/57364>

**File Description:**

Supplementary files