

# The Sunyaev–Zel’dovich effect due to hyperstarburst galaxy winds

Barnaby Rowe<sup>1,2★</sup> and Joseph Silk<sup>3</sup><sup>1</sup>*Jet Propulsion Laboratory, California Institute of Technology, 4800 Oak Grove Drive, Pasadena, CA 91109, USA*<sup>2</sup>*Institut d’Astrophysique de Paris, UMR7095 CNRS, Université Pierre et Marie Curie – Paris 6, 98 bis, Boulevard Arago, 75014 Paris, France*<sup>3</sup>*Department of Physics, Oxford University, Denys Wilkinson Building, Keble Road, Oxford OX1 4LN*

Accepted 2010 October 28. Received 2010 October 27; in original form 2010 May 23

## ABSTRACT

We construct a simple, spherical blast wave model to estimate the pressure structure of the intergalactic medium surrounding hyperstarburst galaxies, and argue that the effects of interaction with star-forming galaxy winds may be approximated at early times by an adiabatically expanding, self-similar ‘bubble’ as described by Weaver et al. and Ostriker & McKee. This model is used to make observational predictions for the thermal Sunyaev–Zel’dovich effect in the shocked bubble plasma. Radiative cooling losses are explored, and it is found that bremsstrahlung will limit the epoch of adiabatic expansion to  $10^7$ – $10^8$  yr: comparable to total hyperstarburst lifetimes. Prospects for making a first Sunyaev–Zel’dovich detection of galaxy wind bubbles using the Atacama Large Millimeter Array are examined for a number of active hyperstarburst sources in the literature.

**Key words:** shock waves – galaxies: high-redshift – intergalactic medium – galaxies: starburst.

## 1 INTRODUCTION

After the epoch of reionization, free electrons in the intergalactic medium (IGM) interact with photons in the cosmic microwave background (CMB) radiation via Thompson scattering. Known as the Sunyaev–Zel’dovich (SZ) effect (e.g. Sunyaev & Zel’dovich 1970, 1972; see also Carlstrom et al. 2002 for a review), the result is a characteristic spectral distortion of the CMB. The effect can be split into two contributions: that due to the thermal motion of free electrons which causes an overall increase in the apparent temperature of CMB photons (called the thermal SZ or tSZ effect), and that due to bulk kinetic motion (the kSZ effect; see Carlstrom et al. 2002).

The tSZ effect, in particular, shows promise as a means of observing the hot plasma surrounding galaxy clusters and other peaks in the matter power spectrum, and recent years have seen a steady growth in both theoretical predictions (e.g. Roncarelli et al. 2007; Scannapieco, Thacker & Couchman 2008; Moodley et al. 2009) and actual measurements for massive galaxy clusters (e.g. Halverson et al. 2009; Nord et al. 2009; Basu et al. 2010). It is interesting to consider what other astrophysical objects may be observable in the near future with the tSZ effect (e.g. Yamada et al. 2010).

In recent years an increasing number of high-redshift ‘hyperstarbursts’ (which we define as objects with an estimated star formation rate (SFR) of  $\dot{M}_* \gtrsim 10^3 M_\odot \text{yr}^{-1}$ ) have been reported in the literature, often but not always identified with submillimetre galaxies (SMGs), and are believed to represent a significant fraction of the

total star formation at these epochs (e.g. Blain et al. 2002; Solomon & Vanden Bout 2005; Wang et al. 2008; Casey et al. 2009; Martínez-Sansigre et al. 2009; Riechers et al. 2009; Wagg et al. 2009). Other recent results suggest that the galaxy wind outflows frequently observed in star-forming galaxy spectra (see, e.g. Veilleux, Cecil & Bland-Hawthorn 2005 for a review) are ubiquitous wherever there is star formation activity to drive them (Grimes et al. 2009; Weiner et al. 2009; Krug, Rupke & Veilleux 2010; Rubin et al. 2010), with wind masses and velocities increasing with  $\dot{M}_*$ . The winds associated with hyperstarbursts at high redshift will be extremely energetic, leading to violent interaction with the plasma of the surrounding IGM.

The following question naturally arises: can we detect the tSZ due to the wind–IGM interaction for these events? A similar question has been posed for active galaxies (e.g. Yamada, Sugiyama & Silk 1999; Platania et al. 2002; Chatterjee & Kosowsky 2007; Chatterjee et al. 2008; Scannapieco et al. 2008; Yamada et al. 2010) and for the combined signal due to star-forming winds (e.g. Majumdar, Nath & Chiba 2001; Babich & Loeb 2007), but individual hyperstarburst objects now also raise interesting possibilities. The temperature increase of CMB photons due to the tSZ effect is redshift independent (e.g. Carlstrom et al. 2002), which potentially opens a new observational window on extreme star formation at high redshift.

We examine this question by constructing a simplified adiabatic model of the wind–IGM interaction (Section 2), and then calculate the tSZ effect according to such a model for a variety of possible hyperstarburst targets in the literature (Sections 3 and 4) along with observational prospects for the upcoming Atacama Large Millimeter Array (ALMA; see Brown, Wild & Cunningham 2004)

★E-mail: barnaby.t.rowe@jpl.nasa.gov

facility. In Sections 5 we test the adiabatic expansion assumption by calculating radiative cooling time-scales for the hot plasma, and end in Section 6 with a discussion and conclusions.

## 2 GALAXY WIND INJECTION BUBBLE MODEL

As demonstrated by Samui, Subramanian & Srianand (2008), who present a detailed semi-analytic analysis of galactic outflows, the galaxy wind–IGM interaction can be approximately described at early times as a spherically expanding, self-similar blast wave or ‘bubble’. The model used to describe this bubble is based on that presented in Weaver et al. (1977), which describes the adiabatic interaction of strong stellar winds with the interstellar medium. This is related to the original Sedov–Taylor blast wave solution (see, e.g. Landau & Lifshitz 1959; Ostriker & McKee 1988) but describes the shock evolution under *continuous* rather than instantaneous energy injection, making it being better suited to cases with ongoing starburst activity. The Weaver et al. (1977) model retains self-similarity by not introducing a characteristic time-scale to the stellar wind bubble, and it is this property that allows it to be applied equally well to the galaxy wind–IGM interaction despite the greater energies of this regime.

At time  $t = 0$  star formation processes initiate the expulsion of a galaxy wind, which we approximate as having constant mass outflow rate  $\dot{M}_w$  leading to a mechanical energy injection rate given by

$$L_w = \dot{M}_w v_w^2 / 2, \quad (1)$$

where  $v_w$  is the net wind outflow velocity. All quantities will be expressed in relation to a fiducial value  $v_w = 10^3 \text{ km s}^{-1}$ , motivated by observations of intermediate- to high-redshift winds for objects with extreme SFRs (Adelberger et al. 2003; Bland-Hawthorn, Veilleux & Cecil 2007; Capak et al. 2008; Weiner et al. 2009; Rubin et al. 2010). Following Aguirre et al. (2001), Springel & Hernquist (2003) and Dalla Vecchia & Schaye (2008), we relate the wind mass outflow  $\dot{M}_w$  to the SFR  $\dot{M}_*$  using the dimensionless wind mass loading parameter  $\eta$  (adopting a fiducial value of 1 in all calculations), so that  $\dot{M}_w = \eta \dot{M}_*$ . The total energy injected by the wind into the system is thus

$$E = L_w t = \eta \dot{M}_* v_w^2 t / 2. \quad (2)$$

The mechanical luminosity  $L_w$  can be related to the total energy available from core collapse supernovae via the wind energy fraction

$$f_w = \eta v_w^2 / (2\epsilon_{\text{SN}}), \quad (3)$$

where  $\epsilon_{\text{SN}}$  is the kinetic energy injected per  $M_\odot$  of stars formed (e.g. Dalla Vecchia & Schaye 2008). Assuming a Chabrier (2003) initial mass function, these authors adopt a value  $\epsilon_{\text{SN}} \simeq 1.8 \times 10^{42} \text{ erg } M_\odot^{-1}$ : for our fiducial values of  $v_w$  and  $\eta$  this implies a wind energy fraction of  $f_w \simeq 0.55$ . This is slightly larger than the value of 0.4 adopted by Dalla Vecchia & Schaye (2008) for more moderately star-forming systems. It should be cautioned that the exact value of  $f_w$  appropriate for supernovae in high-redshift hyperstarburst regions is unclear, and so all results will be presented with scaling relations for the parameters  $v_w$  and  $\eta$ .

The interaction of the wind with the IGM can be split into four physically distinct zones at increasing radial distance  $r$  from the bubble centre: (a) the free-streaming wind immediately on exit from the hyperstarburst region; (b) a region of shocked galaxy wind; (c) a shell of shocked IGM plasma and (d) the ambient IGM surrounding the hyperstarburst host galaxy (Weaver et al. 1977; Samui et al. 2008). We model the unshocked IGM in zone (d) as ionized hydrogen of homogeneous density  $\rho_d$ . In order to estimate a value for this density in a hyperstarburst galaxy, we make use of measurements for the clustering bias  $b_Q$  of high-redshift Sloan Digital Sky Survey (SDSS)–DR5 quasars given in Shen et al. (2009): large molecular gas reservoirs and hyperstarburst events are often associated with quasi-stellar objects (QSOs), radio galaxies or other indications of active galactic nuclei (e.g. Solomon & Vanden Bout 2005; see also Section 4, Table 1). These authors find a bias of  $b_Q = 12.96 \pm 2.09$  for the sample of 1788 objects in their highest redshift bin:  $3.5 < z < 5.0$  (median  $z = 3.84$ ), and we thus choose a fiducial modelling value of  $b_Q = 13$ . We also assume that the IGM in the region immediately surrounding the starburst is biased in the same way, giving

$$\rho_d \simeq \rho_{\text{crit}} \Omega_b (1+z)^3 (1+b_Q \delta), \quad (4)$$

where  $\rho_{\text{crit}}$  and  $\Omega_b$  are the current-epoch critical density and baryon density parameter, respectively, and  $\delta$  is the dimensionless density perturbation. We approximate this perturbation in the star formation environment as  $\delta \simeq 180$ , the mean overall matter density perturbation for a collapsed halo.

The outer radius of an adiabatically expanding (non-radiative), spherical blast wave under constant energy injection is given by

$$R_2(t) = \beta (L_w t^3 / \rho_d)^{1/5}, \quad (5)$$

**Table 1.** Model predictions for a selection of reported hyperstarbursts, based on published redshift and SFR estimates (see Sections 4 and 5).

Galaxy target <sup>a</sup>	Redshift $z$	Type	SFR ( $M_\odot \text{ yr}^{-1}$ )	$t$ ( $10^7 \text{ yr}$ )	$R_2$ (kpc)	$\theta_2$ (arcsec)	$y_{\text{peak}}$ ( $10^{-5}$ )	S/N <sub>24</sub> <sup>peak</sup>	$\tau_{\text{IC}}$ ( $10^7 \text{ yr}$ )	$\tau_{\text{B}}$ ( $10^7 \text{ yr}$ )
RG J123649.66+620738.0 <sup>b</sup>	2.32	Radio	3800 <sup>c</sup>	1 <sup>r</sup>	18.4	2.21	2.32	1.19	971	36.0
SMM J222174+0015 <sup>d</sup>	3.10	SMG	1800 <sup>e</sup>	1.7 <sup>e</sup>	19.1	2.47	1.71	0.88	410	11.6
4C41.17R/B <sup>f</sup>	3.80	Radio	3000 <sup>e</sup>	1.1 <sup>e</sup>	14.9	2.06	3.06	1.56	219	8.73
SMM J154137+6630.5 <sup>g</sup>	3.93 <sup>q</sup>	SMG	>10 000 <sup>g</sup>	1 <sup>r</sup>	17.6	2.46	6.63	3.40	200	10.5
COSMOS J100054+023436 <sup>h,i</sup>	4.55	SMG	2900 <sup>h</sup>	0.7 <sup>h</sup>	10.3	1.54	3.91	1.95	124	6.14
BR 1202–0725 <sup>j</sup>	4.69	QSO	9000 <sup>e</sup>	0.9 <sup>e</sup>	14.8	2.27	7.55	3.97	112	6.37
LESS J033229.4–275619 <sup>k</sup>	4.76	SMG	~1000 <sup>k</sup>	4 <sup>k</sup>	23.2	3.53	1.52	0.82	106	2.16
SDSS J092721.82+200123.7 <sup>l</sup>	5.77	QSO	3200 <sup>m</sup>	0.5 <sup>m</sup>	7.63	1.28	5.63	2.42	56.3	3.50
SDSS J114826.64+525150.3 <sup>n</sup>	6.42	QSO	3300 <sup>o</sup>	1 <sup>p</sup>	11.1	1.97	5.67	2.89	38.8	1.93

<sup>a</sup>References for CO/far-infrared emission detection or spectral confirmation; <sup>b</sup>Chapman et al. (2004); <sup>c</sup>Casey et al. (2009); <sup>d</sup>Neri et al. (2003); <sup>e</sup>Solomon & Vanden Bout (2005); <sup>f</sup>De Breuck et al. (2005); <sup>g</sup>Wagg et al. (2009); <sup>h</sup>Capak et al. (2008); <sup>i</sup>Schinnerer et al. (2008); <sup>j</sup>Omont et al. (1996); <sup>k</sup>Coppin et al. (2009); <sup>l</sup>Carilli et al. (2007); <sup>m</sup>Wang et al. (2008); <sup>n</sup>Bertoldi et al. (2003); <sup>o</sup>Riechers et al. (2009); <sup>p</sup>Walter et al. (2003); <sup>q</sup>photometric redshift estimate and <sup>r</sup>unknown, fiducial value used (see equations 7 and 13 for scalings).

where  $\beta = 0.8828$  is a constant estimated via numerical calculation (Ostriker & McKee 1988). Equation (5) is the only dimensionally correct combination of the system variables in this time and distance scale-free problem, and its power-law form is therefore required; this self-similar evolution will cease only after radiative losses become significant (see Section 5). Using a flat, *Wilkinson Microwave Anisotropy Probe* (WMAP) 5-yr best-fitting Lambda cold dark matter ( $\Lambda$ CDM) cosmology (Komatsu et al. 2009) and the value  $\Omega_b = 0.044 \pm 0.01$  (Sánchez et al. 2009), we may rewrite equation (5) in terms of fiducial values for a hyperstarburst shock wave system as follows:

$$R_2(t) = \beta \left[ \frac{\eta \dot{M}_* v_w^2 t^3}{2\Omega_b \rho_{\text{crit}} (1+z)^3 (1+b_Q \delta)} \right]^{1/5} \quad (6)$$

$$\begin{aligned} &= 28.86 \eta^{1/5} \left( \frac{\dot{M}_*}{10^3 M_\odot \text{ yr}^{-1}} \right)^{1/5} \left( \frac{v_w}{10^3 \text{ km s}^{-1}} \right)^{2/5} \\ &\times \left( \frac{t}{10^7 \text{ yr}} \right)^{3/5} (1+z)^{-3/5} \text{ kpc}. \end{aligned} \quad (7)$$

It can be seen that bubble radius will quickly extend significantly beyond the star-forming regions into the surrounding IGM.

The pressure and density structure within the bubble is also approximately self-similar (Weaver et al. 1977; Samui et al. 2008), and can therefore be described in terms of the dimensionless radial parameter  $\xi = r/R_2(t)$ . At the very edge of the shock ( $\xi = 1$ ), the gas quantities are determined by the Rankine–Hugoniot conditions for a strong shock boundary:

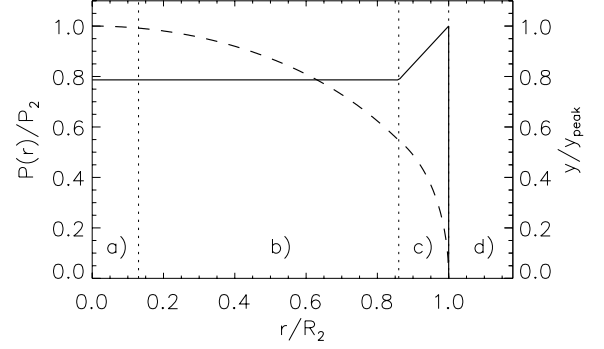
$$\rho_2 = \rho_d(\gamma + 1)/(\gamma - 1), \quad P_2 = 2\rho_d \dot{R}_2^2/(\gamma + 1), \quad (8)$$

where  $\dot{R}_2 \equiv dR_2/dt$ , and for the monatomic gas we have adiabatic index  $\gamma = 5/3$  (see Landau & Lifshitz 1959). Using this value gives an edge-of-shock density of  $\rho_2 = 4\rho_d$  and pressure  $P_2 = 3\rho_d \dot{R}_2^2/4$ . Within the outer shock radius, Weaver et al. (1977) find that the density  $\rho(\xi)$  decreases inwards and drops suddenly to zero at the contact surface  $R_c = 0.86R_2$ , the interface between the shocked IGM in zone (c) and the shocked wind in zone (b). The pressure at this surface is  $P(\xi = 0.86) = 0.59\rho_d \dot{R}_2^2$ , and these scalings hold while the expansion remains adiabatic.

For a perfect gas the tSZ effect may be estimated by integrating the pressure along a line-of-sight path through the bubble; a model for the pressure structure throughout must therefore be adopted. An exact model may be calculated numerically (Weaver et al. 1977; Dokuchaev 2002), but ultimately the accuracy of such a model will rely on the physical conditions matching those described above (e.g. uniform ambient IGM density  $\rho_d$  or constant input star formation power  $L_w$ ), which is unlikely. Instead, for the purposes of estimating an approximate observability of the tSZ effect we adopt a simple model that displays the correct behaviour at the boundaries and makes simplifying interpolations between them:

$$P(\xi) = \begin{cases} P_b & 0 \leq \xi < 0.86 \\ P_b + \left( \frac{P_2 - P_b}{0.14} \right) (\xi - 0.86) & 0.86 < \xi \leq 1 \end{cases}, \quad (9)$$

where  $P_b = 0.59\rho_d \dot{R}_2^2$ . The model, plotted in Fig. 1, is isobaric for  $r < R_c$ : this behaviour is argued from simple principles by Weaver et al. (1977) and can also be seen in the complex analytic solutions provided by Dokuchaev (2002). This pressure model can then be used to estimate the tSZ effect for a hyperstarburst wind bubble.



**Figure 1.** Pressure (solid line) and Compton  $y$  parameter (dashed line) in the model as a function of distance from the bubble centre, with labels for the four distinct physical zones (a)–(d).

### 3 THERMAL SZ EFFECT IN THE BUBBLE

The tSZ effect describes the spectral variation of the specific intensity of the CMB photons caused by their passing through a non-relativistic, Maxwell-distributed electron gas (Carlstrom et al. 2002). It takes the form

$$\frac{\Delta I_\nu}{I_\nu} = \frac{x \exp x}{\exp x - 1} \left( \frac{x}{\tanh x/2} - 4 \right) y, \quad (10)$$

with  $x = h\nu/k_B T_{\text{CMB}}$  (using  $T_{\text{CMB}} = 2.725$  K at  $z = 0$ ), and where the Compton  $y$  parameter is defined via the path integral

$$y = \int \frac{k_B T_e(l)}{m_e c^2} \sigma_T n_e(l) dl \quad (11)$$

along the observer line of sight. We do not include a relativistic correction to the tSZ effect (e.g. Challinor & Lasenby 1998; Itoh, Kohyama & Nozawa 1998) for the hot shock wave electrons (see Section 4).

For a perfect gas such as the extremely rarefied IGM, equation (11) becomes

$$y = \int \frac{k_B P(l)}{m_e c^2} \sigma_T dl. \quad (12)$$

Using the fiducial values described, and the pressure model described by equation (9), this gives a peak value of

$$\begin{aligned} y_{\text{peak}} &= 2.456 \times 10^{-6} \eta^{3/5} \left( \frac{\dot{M}_*}{10^3 M_\odot \text{ yr}^{-1}} \right)^{3/5} \left( \frac{v_w}{10^3 \text{ km s}^{-1}} \right)^{6/5} \\ &\times \left( \frac{t}{10^7 \text{ yr}} \right)^{-(1/5)} (1+z)^{6/5} \end{aligned} \quad (13)$$

along the line of sight through the centre of the bubble. Note that, due to the dependence of  $P$  upon  $\rho_d$ , the strength of the tSZ in this model increases with redshift (although the bremsstrahlung cooling rate will also; see Section 5). The  $y$  at any distance from the bubble centre can be calculated using the expression for pressure given in equation (9), and is shown in Fig. 1.

### 4 POTENTIAL HYPERSTARBURST TARGETS

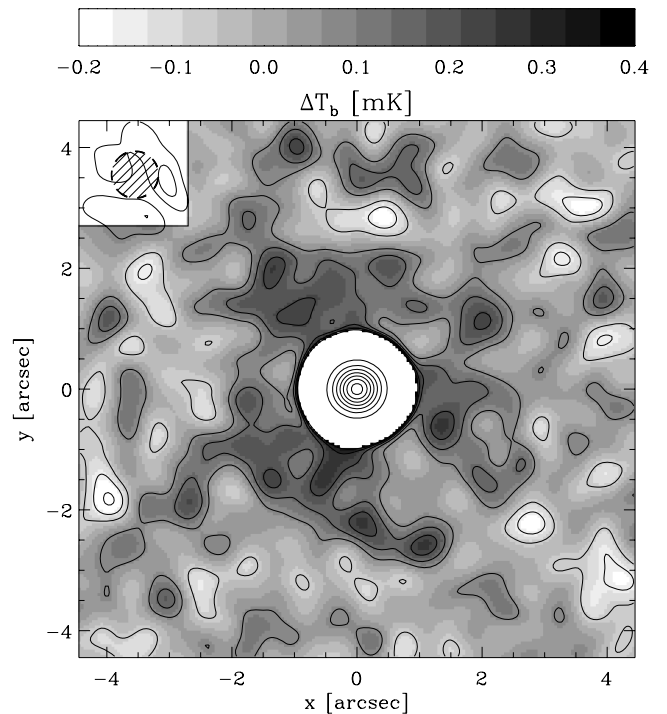
In Table 1 we present a limited selection of hyperstarburst objects from the literature that may make suitable targets for tSZ observation, along with predictions for observable properties based on the simple bubble model. In all these calculations we use the published estimate of the SFR, take  $v_w = 10^3 \text{ km s}^{-1}$  and  $\eta = 1$  (corresponding to  $f_w \simeq 0.55$ ), and employ a flat, WMAP 5-yr cosmology as

in Section 2. Where an estimate of the age  $t$  of the hyperstarburst exists (e.g. from SED fits) that value is chosen; otherwise, the depletion time-scale for the CO-detected molecular gas reservoir is used as a proxy (since on average a hyperstarburst will be observed mid-way through this depletion). The observational angular radius  $\theta_2$  corresponding to  $R_2$  is given for each bubble model, and the central line-of-sight Compton  $y_{\text{peak}}$  is tabulated. In all cases this is seen to be significantly greater than the cosmological expectation value of  $\langle y \rangle = (1.19 \pm 0.32) \times 10^{-6}$  calculated by Roncarelli et al. (2007).

Using the ALMA sensitivity calculator (made available on the European Southern Observatory web pages<sup>1</sup>) we also estimate  $S/N_{24}^{\text{peak}}$ , defined as the surface brightness signal-to-noise ratio (S/N) that may be obtained at  $y_{\text{peak}}$  using ALMA within an exposure time of 24 h. We calculate this value assuming continuum observation centred on  $\nu = 400$  GHz (within ALMA band 8), and an antenna configuration giving a beam with full width at half-maximum (FWHM) = 0.75 arcsec. In calculating  $S/N_{24}^{\text{peak}}$  each bubble is first convolved with this simulated Gaussian beam to estimate the observable brightness temperature excess at this resolution. The sensitivity at the continuum band centred on  $\nu$  is calculated using the online observing tool, taking the declination (and hence typical atmospheric column density) of each object into account. For those targets with a sky position that cannot be observed using the Southern hemisphere ALMA facility ( $\delta \simeq 30^\circ$  and above) we instead use an equatorial location for comparison.

To visualize these results we simulate an ALMA image of one of the bubbles visible from the Southern hemisphere, SMM J222174+0015 (Neri et al. 2003; Solomon & Vanden Bout 2005), at the same  $\nu$  and beamsize but for an extended exposure time of  $5 \times 24$  h: this bubble can be seen in Fig. 2. The map also includes contamination due to warm dust emission in the hyperstarburst SMG, for which we assume dust grains at 40 K with emissivity  $\epsilon_\nu \propto \nu^\beta$  and spectral index  $\beta = 1.5$  (e.g. Blain et al. 2002). We model the emitting surface brightness distribution as a uniform disc of diameter 2 kpc in the centre of the bubble, comparable with recent observations of compact hyperstarbursts (Maiolino et al. 2007; Casey et al. 2009; Walter et al. 2009). Taking the value of  $6.3 \pm 1.3$  mJy for the SMM J222174+0015 flux density at 850  $\mu\text{m}$  (Solomon & Vanden Bout 2005) we estimate a flux density of 9.7 mJy at 400 GHz, and plot contours of the convolved brightness temperature distribution in the central region of Fig. 2. The brightness temperature grey-scale is here removed subject to a simple cut of  $\Delta T_b \leq 0.4$  mK showing that, thanks to the angular resolution of ALMA, the extended bubble is discernible beyond the strong-but-localized dust emission at its centre. In practice, a more sophisticated removal of SMG dust contamination will be aided by the possibility of ultrahigh-resolution mapping of the bright central dust (ALMA can reach FWHM = 0.011 arcsec at 400 GHz), and by the characteristic signature of the tSZ effect on CMB photons: a maximum spectral excess/decrement around 385/144 GHz and null crossover at 218 GHz (Carlstrom et al. 2002). Multiple observations will require further telescope time, however.

In Section 3 it was noted that relativistic corrections to the tSZ are not included in the determination of  $y$ . Using equation (8), the temperature of the gas in the shock boundary is  $T_2 = 3(m_e + m_p)R_2^2/(4k_B)$ , which implies a temperature of  $T_2 \gtrsim 10^7$  K for all the objects listed in Table 1. Calculating the reduction in tSZ intensity using the first- and second-order relativistic terms described by



**Figure 2.** Simulated ALMA excess brightness temperature map at 400 GHz, relative to the CMB, for SMM J222174+0015 (as described in Section 4). The simulated exposure time is  $5 \times 24$  h, and contours in the grey-scale-shaded region are placed at  $1\sigma$  intervals around  $\Delta T_b = 0$ . We remove the grey-scale map in the central, SMG dust-contaminated region subject to a threshold of  $\Delta T_b \leq 0.4$  mK, but contours are here plotted at intervals of 100 mK to illustrate this bright central source. The hatched area in the upper left illustrates the simulated beam of FWHM = 0.75 arcsec.

Challinor & Lasenby (1998) yields corrections of  $\simeq 3$  per cent for the hyperstarbursts listed. The effect is therefore negligible for the current model, but relevant for more detailed calculations.

## 5 RADIATIVE COOLING IN THE INJECTION BUBBLE

The discussion so far has assumed adiabatic bubble expansion, but depends upon losses due to radiative cooling being small within the hyperstarburst age  $t$ . At the shock boundary temperatures of  $T_2 \gtrsim 10^7$  K the gas will be fully ionized but not sufficiently energetic for electron–positron annihilation to contribute to radiative processes: thermal bremsstrahlung and inverse-Compton cooling by CMB photons will dominate radiative losses (this latter being the net cooling effect of the tSZ itself). The radiative cooling will be greatest at the shock boundary  $R_2$ , where the combination of plasma temperature  $T_2$  and density  $\rho_2$  are greatest, and so we calculate time-scales for radiative losses in this region to explore the validity of the adiabatic expansion approximation.

We consider first the effect of inverse-Compton scattering of CMB photons. In the relevant non-relativistic limit, the net energy loss rate for a single electron in the shock plasma is given by

$$-\frac{dE}{dt} = \frac{16}{3} \sigma_T \sigma_{\text{SB}} T_{\text{CMB}}^4 \frac{\langle v_e^2 \rangle}{c^2} \quad (14)$$

(see, e.g. Longair 1992), where  $\sigma_T$  is the Thomson scattering cross-section,  $\sigma_{\text{SB}}$  is the Stefan–Boltzmann constant,  $T_{\text{CMB}}$  is the CMB photon temperature at that epoch, and  $v_e$  is the velocity of the

<sup>1</sup> <http://www.eso.org/sci/facilities/alma/observing/tools/etc/>

electron. This gives an exponential decay law with an inverse-Compton cooling time-scale of

$$\tau_{\text{IC}} = (3m_e c^2) / [32\sigma_T \sigma_{\text{SB}} T_{\text{CMB}}^4(z)] \quad (15)$$

at the epoch at which the shock is observed. Values of  $\tau_{\text{IC}}$  for the selection of targets discussed in Section 4 can also be seen in Table 1, and in all cases can be seen to be large in comparison to the typical hyperstarburst lifetime of  $\sim 10^7$  yr.

Cooling due to thermal bremsstrahlung near the shock boundary  $R_2$  may be more significant. A thermal hydrogen electron in the shock boundary plasma will lose energy at a rate

$$-\frac{dE}{dt} = 1.435 \times 10^{-40} n_p \bar{g} \sqrt{T_2}, \quad (16)$$

where  $n_p$  is the volume number density of protons in the plasma and  $\bar{g} \simeq 1.2$  is taken as a typical Gaunt factor (Longair 1992). In Table 1 we use this relation to give time-scales  $\tau_B$  over which the shock boundary energy would be reduced to 37 per cent of its instantaneous adiabatic value by bremsstrahlung alone, as an indicator of the importance of radiative cooling. These time-scales are generally longer than the typical lifetimes of hyperstarbursts, but not always: bremsstrahlung will clearly dominate over inverse-Compton losses, and at higher redshift (where  $n_p$  is greater) will limit the epoch of pure adiabatic evolution to within  $t \lesssim 10^7$  yr, comparable with the duration of hyperstarburst activity. However, these radiative losses are not total: the adiabatic model can be viewed as giving an approximate upper bound on the expected range of  $y_{\text{peak}}$ . This increases the importance of bubble age in the tSZ signal beyond the otherwise weak  $y \propto t^{-1/5}$ , and might be used to provide lower bounds on  $t$  should a tSZ bubble not be detected.

## 6 DISCUSSION & CONCLUSIONS

We have presented an adiabatic model of wind-driven bubble shock waves around hyperstarburst galaxies and made predictions for the strength of the tSZ effect due to such objects. Assuming this model to be a reasonable approximation we have shown that such bubbles are detectable using ALMA, albeit requiring integration times of multiple days (in two or, preferably, three bands). We have shown that bremsstrahlung will dominate the radiative cooling of the shocked gas, and found that this will cause the evolution of the shock to become significantly non-adiabatic after a time comparable to the typical total duration of hyperstarbursts themselves.

In order to construct the model a number of simplifications have been made. Among these, the assumption of spherical symmetry and the homogeneous density  $\rho_d$  are least likely to be valid. The former assumption may be thrown into question for systems with active galactic nuclei, as are often seen for hyperstarbursts, or with star formation occurring in an extended disc rather than a central core: Dalla Vecchia & Schaye (2008) found a bipolar pressure distribution when modelling outflows in massive disc-like formation, once winds were fully coupled to the gas dynamics of the system. A bipolar outflow would alter the pressure distribution of the shocked gas and might reduce the strength of the tSZ effect along certain lines of sight.

However, the star typical SFRs in the massive systems simulated by these authors were small when compared to the figures in Table 1, and it might be expected that the greater mechanical energy input from hyperstarbursts will alter the wind-IGM interaction significantly. Dalla Vecchia & Schaye (2008) found interesting qualitative differences in the behaviour of outflows for their simulated disc systems of total halo mass  $10^{10}$  and  $10^{12} h^{-1} M_\odot$  that produced early

SFRs of  $\simeq 0.05$  and  $\simeq 10 M_\odot \text{ yr}^{-1}$ , respectively. An increase of a further 2 orders of magnitude in SFR may cause sufficient increases in wind ram pressure as to qualitatively change the outflow behaviour once more. In a related study, Chatterjee & Kosowsky (2007) and Chatterjee et al. (2008) found that quasar-driven bubbles in simulated haloes provided a reasonable match to a simple spherical model, although again at lower energies and typically after longer time-scales than we consider here. Unfortunately there is insufficient knowledge and modelling of the wind-interstellar medium interaction in these powerful systems to do more than speculate. The typical morphologies and environments of the star-forming gas regions prior to the onset of strong winds are also poorly known for these hyperstarbursts, which further complicates accurate simulation. More detailed theoretical modelling combined with future precision observations of the tSZ might help shed light on exactly these questions.

Another simplification, the assumption of a homogeneous IGM, may misrepresent the evolution of the bubble with time: for a more realistic density profile the bubble will initially expand more slowly through the dense gas at the halo centre, and then more rapidly at later times as  $\rho_d(R_2)$  decreases. This is an area in which the modelling could be improved, particularly if aided by more detailed knowledge of the gas density around hyperstarbursts. A related simplification is the model's neglect of the gravitational deceleration of the shock wave due to the host halo potential. This effect will generally represent a small correction to the dynamics of adiabatic expansion and radiative losses, which can be seen by comparing the galaxy wind velocities to the escape velocities of most galactic haloes (entrained clouds, however, might impart a velocity kick that prevents their escape). These effects should be considered in more accurate modelling, perhaps using a simplified model of a galaxy halo potential and mass entrainment (e.g. Murray, Quataert & Thompson 2005).

Important uncertainties also arise due to the assumed values of the starburst age  $t$ , and the fiducial parameters  $v_w$  and  $\dot{M}_*$  (or equivalently  $f_w$ ). It should be emphasized that the fiducial predictions may be adapted as appropriate using the simple scaling relations presented, which may be necessary as we gain a clearer picture of hyperstarburst physics. As an example, using  $y \propto f_w^{3/5}$  from equation (13) and adopting the value  $f_w \simeq 0.4$  of Dalla Vecchia & Schaye (2008) reduces the tSZ signals listed in Table 1 by  $\simeq 20$  per cent. However, a drastic reduction in  $f_w$  (appropriate if the kinetic energy from hyperstarburst supernovae is mostly lost radiatively) might yet reduce  $y$  to the cosmological confusion limit calculated by Roncarelli et al. (2007). Conversely, observations of the tSZ around hyperstarbursts could in this way, even if not detected, provide interesting constraints on  $f_w$  and thus supernova wind feedback in these objects, which may contribute much of the total star formation at high redshift (Blain et al. 2002). They might also constrain the feedback energy injected by the active galactic nuclei commonly hosted in hyperstarburst systems (e.g. Chatterjee et al. 2008), although more careful modelling will be required to distinguish the two signals.

To conclude, wind-driven bubbles around hyperstarburst objects may be detectable via the tSZ in the near future using submillimetre instruments such as ALMA or its successors. Despite many simplifying assumptions in the model, the enormous mechanical energy of the wind-IGM interaction will ensure that a system approximating the simple, self-similar blast wave must persist while radiative losses are small. According to such a model, such objects as those listed in Table 1 (with estimated  $y_{\text{peak}} > 2 \times 10^{-5}$ ) might be securely detected with ALMA within days. The number of known

hyperstarbursts in the Southern hemisphere must be expected to increase with time, and one of these may present an excellent opportunity for a first bubble detection with ALMA.

## ACKNOWLEDGMENTS

The authors would like to thank Richard Bielby, Arthur Kosowsky, Vivienne Wild and the anonymous referee for useful comments and suggestions. BR has been supported in part by the Dark Universe through Extragalactic Lensing (DUEL) European Union FP6 Research Training Network (MRTN-CT-2006-036133).

## REFERENCES

- Adelberger K. L., Steidel C. C., Shapley A. E., Pettini M., 2003, *ApJ*, 584, 45
- Aguirre A., Hernquist L., Schaye J., Katz N., Weinberg D. H., Gardner J., 2001, *ApJ*, 561, 521
- Babich D., Loeb A., 2007, *MNRAS*, 374, L24
- Basu K. et al., 2010, *A&A*, 519, A29
- Bertoldi F., Carilli C. L., Cox P., Fan X., Strauss M. A., Beelen A., Omont A., Zylka R., 2003, *A&A*, 406, L55
- Blain A. W., Smail I., Ivison R. J., Kneib J., Frayer D. T., 2002, *Phys. Rep.*, 369, 111
- Bland-Hawthorn J., Veilleux S., Cecil G., 2007, *Ap&SS*, 311, 87
- Brown R. L., Wild W., Cunningham C., 2004, *Advances Space Res.*, 34, 555
- Capak P. et al., 2008, *ApJ*, 681, L53
- Carilli C. L. et al., 2007, *ApJ*, 666, L9
- Carlstrom J. E., Holder G. P., Reese E. D., 2002, *ARA&A*, 40, 643
- Casey C. M. et al., 2009, *MNRAS*, 399, 121
- Chabrier G., 2003, *PASP*, 115, 763
- Challinor A., Lasenby A., 1998, *ApJ*, 499, 1
- Chapman S. C., Smail I., Blain A. W., Ivison R. J., 2004, *ApJ*, 614, 671
- Chatterjee S., Kosowsky A., 2007, *ApJ*, 661, L113
- Chatterjee S., Di Matteo T., Kosowsky A., Pelupessy I., 2008, *MNRAS*, 390, 535
- Coppin K. E. K. et al., 2009, *MNRAS*, 395, 1905
- Dalla Vecchia C., Schaye J., 2008, *MNRAS*, 387, 1431
- De Breuck C., Downes D., Neri R., van Breugel W., Reuland M., Omont A., Ivison R., 2005, *A&A*, 430, L1
- Dokuchaev V. I., 2002, *A&A*, 395, 1023
- Grimes J. P. et al., 2009, *ApJS*, 181, 272
- Halverson N. W. et al., 2009, *ApJ*, 701, 42
- Itoh N., Kohyama Y., Nozawa S., 1998, *ApJ*, 502, 7
- Komatsu E. et al., 2009, *ApJS*, 180, 330
- Krug H. B., Rupke D. S. N., Veilleux S., 2010, *ApJ*, 708, 1145
- Landau L. D., Lifshitz E. M., 1959, *Fluid Mech.*
- Longair M. S., 1992, *High Energy Astrophysics*. Cambridge Univ. Press, Cambridge
- Maiolino R. et al., 2007, *A&A*, 472, L33
- Majumdar S., Nath B. B., Chiba M., 2001, *MNRAS*, 324, 537
- Martínez-Sansigre A. et al., 2009, *ApJ*, 706, 184
- Moodley K., Warne R., Goheer N., Trac H., 2009, *ApJ*, 697, 1392
- Murray N., Quataert E., Thompson T. A., 2005, *ApJ*, 618, 569
- Neri R. et al., 2003, *ApJ*, 597, L113
- Nord M. et al., 2009, *A&A*, 506, 623
- Omont A., Petitjean P., Guilloteau S., McMahon R. G., Solomon P. M., Pécontal E., 1996, *Nat*, 382, 428
- Ostriker J. P., McKee C. F., 1988, *Rev. Modern Phys.*, 60, 1
- Platania P., Burigana C., De Zotti G., Lazzaro E., Bersanelli M., 2002, *MNRAS*, 337, 242
- Riechers D. A. et al., 2009, *ApJ*, 703, 1338
- Roncarelli M., Moscardini L., Borgani S., Dolag K., 2007, *MNRAS*, 378, 1259
- Rubin K. H. R., Weiner B. J., Koo D. C., Martin C. L., Prochaska J. X., Coil A. L., Newman J. A., 2010, *ApJ*, 719, 1503
- Samui S., Subramanian K., Srianand R., 2008, *MNRAS*, 385, 783
- Sánchez A. G., Crocche M., Cabré A., Baugh C. M., Gaztañaga E., 2009, *MNRAS*, 400, 1643
- Scannapieco E., Thacker R. J., Couchman H. M. P., 2008, *ApJ*, 678, 674
- Schinnerer E. et al., 2008, *ApJ*, 689, L5
- Shen Y. et al., 2009, *ApJ*, 697, 1656
- Solomon P. M., Vanden Bout P. A., 2005, *ARA&A*, 43, 677
- Springel V., Hernquist L., 2003, *MNRAS*, 339, 289
- Sunyaev R. A., Zel'dovich Y. B., 1970, *Ap&SS*, 7, 3
- Sunyaev R. A., Zel'dovich Y. B., 1972, *Comments Astrophys. Space Phys.*, 4, 173
- Veilleux S., Cecil G., Bland-Hawthorn J., 2005, *ARA&A*, 43, 769
- Wagg J., Owen F., Bertoldi F., Sawitzki M., Carilli C. L., Menten K. M., Voss H., 2009, *ApJ*, 699, 1843
- Walter F. et al., 2003, *Nat*, 424, 406
- Walter F. et al., 2009, *Nat*, 457, 699
- Wang R. et al., 2008, *ApJ*, 687, 848
- Weaver R., McCray R., Castor J., Shapiro P., Moore R., 1977, *ApJ*, 218, 377
- Weiner B. J. et al., 2009, *ApJ*, 692, 187
- Yamada M., Sugiyama N., Silk J., 1999, *ApJ*, 522, 66
- Yamada M., Fujita Y., Matsuo H., Sugiyama N., 2010, *AJ*, 139, 2494

This paper has been typeset from a  $\text{\TeX}/\text{\LaTeX}$  file prepared by the author.