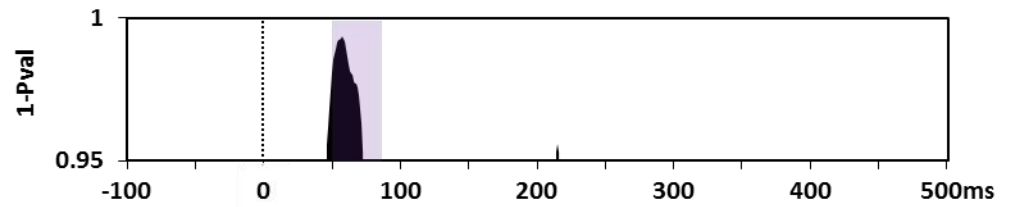
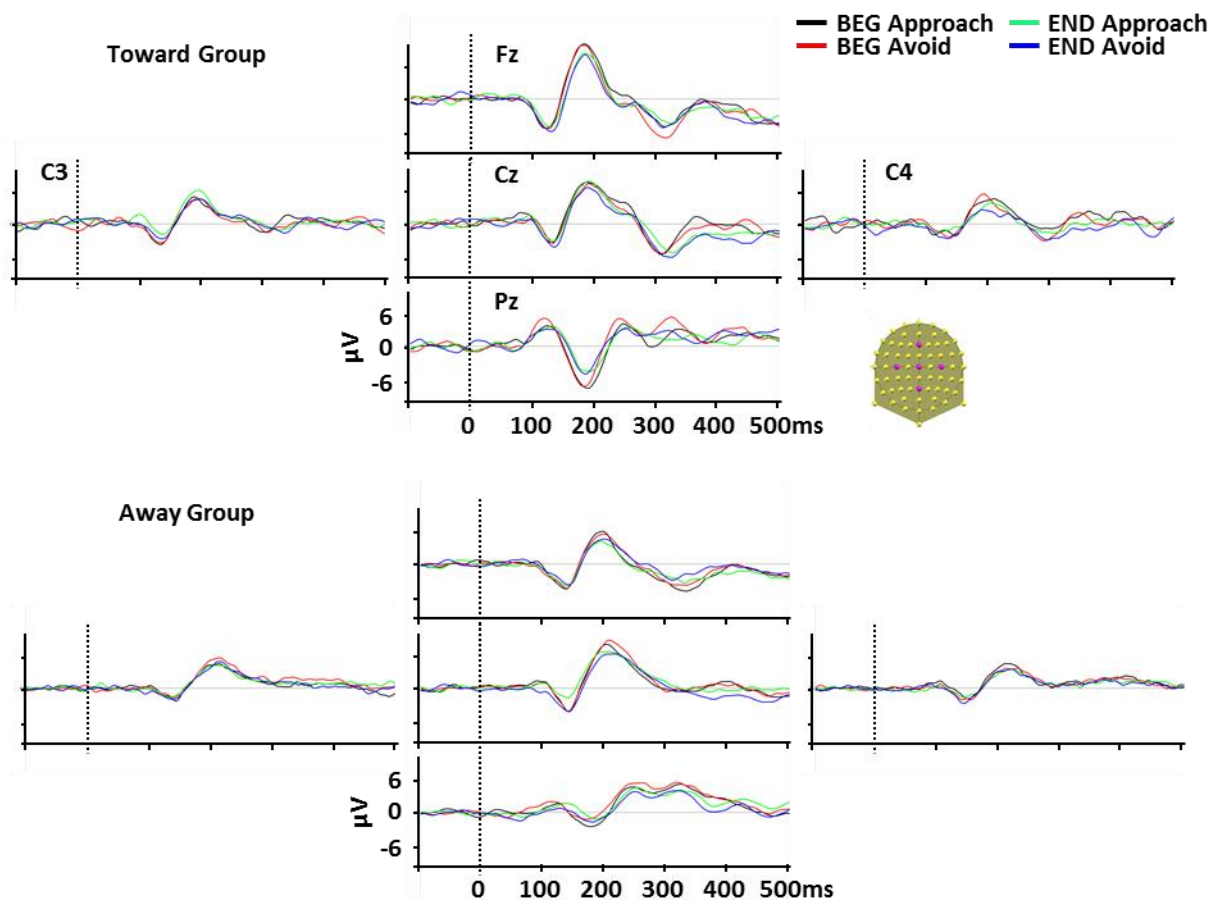


## Supplementary Figure 1 Topographic ANCOVA: Group x Cue x Training Interaction

### C. Topographic ERP Modulations (Global Map Dissimilarity)



## Supplementary Figure 2 Group-averaged ERP waveforms for 5 exemplar electrodes



## Supplementary table 1

Table 1. Raw performance [Mean RT  $\pm$ SD (ms)] during dot-probe task

Group	Beginning		End	
	Approach	Avoid	Approach	Avoid
Participants (n=24)	467 $\pm$ 74	472 $\pm$ 76	402 $\pm$ 82	402 $\pm$ 79

*Supplementary Fig.1 Electrical Neuroimaging Results: interaction term of the 3-way ANOVA with the factors Group (Toward; Away)\*Cue (Approach; Avoid)\*Training (Beginning; End). C. Topographic ANCOVA revealed a significant Group\*Cue\*Training interaction from 46 to 72ms.*

*Supplementary Fig.2 Group-averaged event-related potentials (ERPs) in frontal (Fz), central (Cz), Parietal (Pz) and bilateral central (C3 & C4) electrode sites in the Toward (upper panel) and Away (lower panel) groups in each Cue (Approach, Avoid) and training (Beginning, End) condition.*