

Manuscript version: Author's Accepted Manuscript

The version presented in WRAP is the author's accepted manuscript and may differ from the published version or Version of Record.

Persistent WRAP URL:

<http://wrap.warwick.ac.uk/112011>

How to cite:

Please refer to published version for the most recent bibliographic citation information. If a published version is known of, the repository item page linked to above, will contain details on accessing it.

Copyright and reuse:

The Warwick Research Archive Portal (WRAP) makes this work by researchers of the University of Warwick available open access under the following conditions.

© 2018 Elsevier. Licensed under the Creative Commons Attribution-NonCommercial-NoDerivatives 4.0 International <http://creativecommons.org/licenses/by-nc-nd/4.0/>.



Publisher's statement:

Please refer to the repository item page, publisher's statement section, for further information.

For more information, please contact the WRAP Team at: wrap@warwick.ac.uk.

Accepted Manuscript

Micro-Net: A unified model for segmentation of various objects in microscopy images

Shan E Ahmed Raza, Linda Cheung, Muhammad Shaban, Simon Graham, David Epstein, Stella Pelengaris, Michael Khan, Nasir M. Rajpoot

PII: S1361-8415(18)30062-8
DOI: <https://doi.org/10.1016/j.media.2018.12.003>
Reference: MEDIMA 1438



To appear in: *Medical Image Analysis*

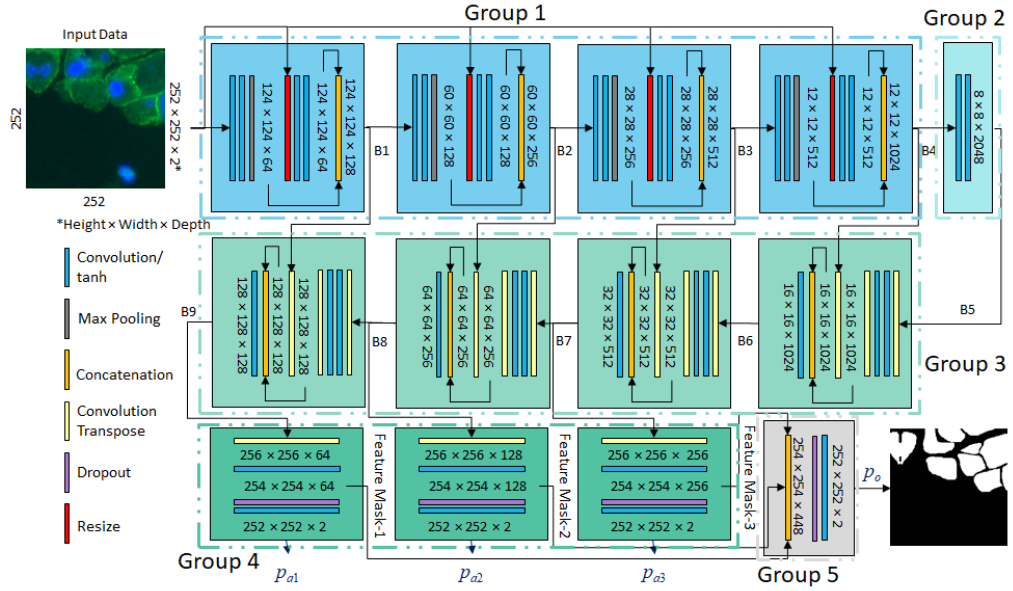
Received date: 6 March 2018
Revised date: 13 December 2018
Accepted date: 14 December 2018

Please cite this article as: Shan E Ahmed Raza, Linda Cheung, Muhammad Shaban, Simon Graham, David Epstein, Stella Pelengaris, Michael Khan, Nasir M. Rajpoot, Micro-Net: A unified model for segmentation of various objects in microscopy images, *Medical Image Analysis* (2018), doi: <https://doi.org/10.1016/j.media.2018.12.003>

This is a PDF file of an unedited manuscript that has been accepted for publication. As a service to our customers we are providing this early version of the manuscript. The manuscript will undergo copyediting, typesetting, and review of the resulting proof before it is published in its final form. Please note that during the production process errors may be discovered which could affect the content, and all legal disclaimers that apply to the journal pertain.

Highlights

- A unified deep learning framework for segmentation of objects (cell nuclei, cells, and multi-cellular objects such as glandular structures) in two main types of microscopy images: fluorescence and histology.
- The proposed Micro-Net is aimed at better object localization in the face of varying intensities and is robust to noise.
- Detailed experimentation & comparative evaluation on publicly available data sets and a new image dataset that is made public with this paper.
- Demonstration of robustness of the algorithm to high levels of noise.



Micro-Net: A unified model for segmentation of various objects in microscopy images

Shan E Ahmed Raza^{a,b,*}, Linda Cheung^c, Muhammad Shaban^b, Simon Graham^b, David Epstein^d, Stella Pelengaris^c, Michael Khan^c, Nasir M. Rajpoot^{b,e,f,*}

^a*Division of Molecular Pathology, The Institute of Cancer Research, UK.*

^b*Department of Computer Science, University of Warwick, UK.*

^c*School of Life Sciences, University of Warwick, UK.*

^d*Department of Mathematics, University of Warwick, UK.*

^e*Department of Pathology, University Hospitals Coventry and Warwickshire, UK.*

^f*The Alan Turing Institute, London, UK.*

Abstract

Object segmentation and structure localization are important steps in automated image analysis pipelines for microscopy images. We present a convolution neural network (CNN) based deep learning architecture for segmentation of objects in microscopy images. The proposed network can be used to segment cells, nuclei and glands in fluorescence microscopy and histology images after slight tuning of input parameters. The network trains at multiple resolutions of the input image, connects the intermediate layers for better localization and context and generates the output using multi-resolution deconvolution filters. The extra convolutional layers which bypass the max-pooling operation allow the network to train for variable input intensities and object size and make it robust to noisy data. We compare our results on publicly available data sets and show that the proposed network outperforms recent deep learning algorithms.

Keywords: Cell segmentation, nuclear segmentation, gland segmentation, convolution neural networks, microscopy image analysis, digital pathology

*Corresponding author

Email addresses: shan.raza@icr.ac.uk (Shan E Ahmed Raza), nasir.rajpoot@ieee.org (Nasir M. Rajpoot)

1. Introduction

In automated microscopic image analysis pipelines, segmentation of key structures such as tumours, glands and cells is an important step (Awan et al. (2017); Yuan et al. (2012); Qaiser et al. (2017)). Recent advances in deep learning have helped to achieve accurate segmentation of these structures. A major strength of deep learning is that the same network architecture can be used to segment various structures across different modalities by retraining and slight tuning of the `input` parameters (Shelhamer et al. (2017); Ronneberger et al. (2015)).

In this paper, we propose a CNN with additional layers in the downsampling path, bypassing the max-pooling operation in order to learn the parameters for segmentation ignored during the max-pooling operation. By doing so, we retain contextual information, make the network interpret the output at multiple resolutions and train the model at multiple input image resolutions in the downsampling path to learn the model parameters for variable cell/nucleus/gland sizes and shapes in the presence of variable intensities and texture. There are two main features of the proposed architecture: (a) it learns image features at multiple input resolutions for better understanding of tissue components and (b) it bypasses the max-pooling operation through extra layers to retain information from weak features may be missed during max-pooling. This makes the network robust to noise and helps to learn the context at multiple resolutions. Figure 1 & 2 demonstrate the impact of these design changes. In Figure 1, solid lines represent *training* accuracy/loss for Micro-Net and Micro-Net⁻, whereas dashed lines represent *validation* accuracy/loss for Micro-Net and Micro-Net⁻ during training. Accuracy is defined in terms of pixel-wise agreement with the ground truth and loss is defined in Section 3.6. In Micro-Net⁻, we removed the multi-resolution input and the bypass layers while keeping the rest of the architecture the same. The improved accuracy and loss values demonstrate the importance of the proposed design changes. To emphasise this further, Figure 2(a) shows an H & E image where nuclei are outlined with green boundaries by

an expert, Figure 2(b) outlines the result of U-Net (Ronneberger et al. (2015)) and Figure 2(c) the result of the proposed approach. It can be observed that U-Net failed to learn the features due to the presence of a dark cytoplasmic region and segmented most of the cellular region instead of just the nucleus, whereas the proposed approach learned the context at multiple resolutions and successfully located the nuclei despite high levels of noise. We discuss this in detail in Section 4.

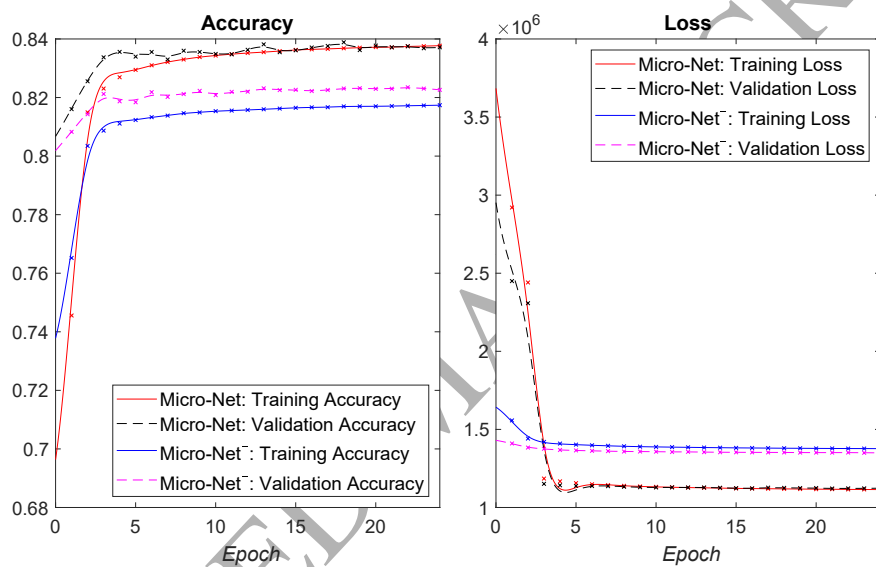


Figure 1: Solid lines represent training accuracy/loss for Micro-Net and Micro-Net⁻ while the dashed lines represent validation accuracy/loss calculated for 25 epochs on fluorescence imaging data for cell segmentation. Micro-Net⁻ was obtained by removing multi-resolution input and the bypass layers from Micro-Net architecture. The accuracy and loss curves clearly show the importance of the multi-resolution input and bypass layers.

This paper is an extension of our previous work on cell (Raza et al. (2017a))¹ and gland segmentation (Raza et al. (2017b)) with the following novel contributions:

¹We will publish our fluorescence cell segmentation data set along with ground truth annotations subject to the publication of this manuscript.

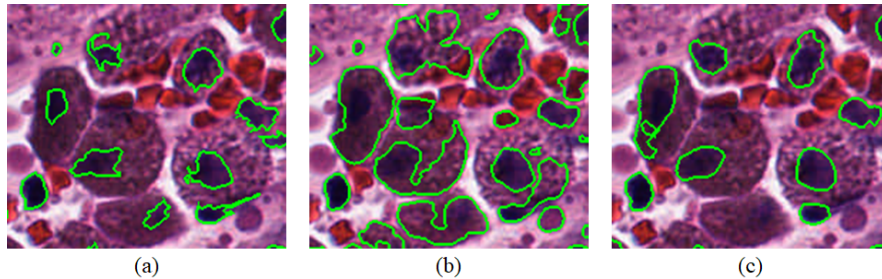


Figure 2: Nuclear segmentation on a sample H & E image from lung outlined in green (a) ground truth, (b) U-Net (Ronneberger et al. (2015)) (c) proposed. U-Net clearly misses the boundary and is inclined towards strong contrast whereas the proposed method segments nuclei instead of **strong** contrast with the background. This is because the proposed approach learns the features at multiple input resolutions and learns for weaker boundaries.

1. A unified framework for segmentation of various types of objects (nuclei, cells, glands) in two different types of image modalities (histology and fluorescence microscopy).
2. We discuss in detail the challenges faced for training a CNN for segmentation and present a solution to overcome those challenges.
3. Detailed results to show the robustness of the method to high levels of noise and comparative evaluation with the state-of-the-art.
4. We propose how the proposed network architecture can be modified/extended for different applications.
5. In order to justify and clearly demonstrate the effect of additional layers, we present results for Micro-Net⁻ after removing the multi-resolution input and the bypass layers while keeping the rest of the architecture the same as Micro-Net.
6. Addition of another data set to our analysis where we compare our results with those in the MICCAI 2017 computational precision medicine (CPM) challenge contest dataset for nuclear segmentation.

1.1. Related Work

The existing literature on segmentation methods can be broadly classified into two main categories: handcrafted feature based approaches and deep learning based methods. Most of the existing handcrafted feature based approaches to cell/nuclear segmentation employ a combination of thresholding, filtering, morphological operations, region accumulation, marker controlled watershed (Yang et al. (2006); Veta et al. (2013)), deformable model fitting (Bergeest and Rohr (2012)), graph cut (Dimopoulos et al. (2014)) and feature classification (Li et al. (2015)). A detailed review of cell/nuclear segmentation methods was presented by Meijering (2012) for images from various modalities. For gland segmentation, most of the early attempts used handcrafted features. Wu et al. (2005) identified initial seed regions based on large vacant lumen regions and expanded the seed to a surrounding chain of epithelial nuclei. Farjam et al. (2007) proposed segmentation by clustering texture features calculated using a variance filter. However, robust segmentation requires more domain knowledge and texture features calculated using just a variance filter might not provide enough information for the local structure of the tissue. Naik et al. (2008) employed a Bayesian classifier to detect lumen regions and then refined using a level set to stop the curve, based on the likelihood of a nucleus. While this approach is reported to work well in benign cases, it can fail in malignant cases where the morphology of glands is quite complex. Nguyen et al. (2012) grouped the nuclei, cytoplasm and lumen using colour space analysis and grew the lumen region with constraints to achieve segmentation. Gunduz-Demir et al. (2010) represented each tissue component as a circular disc and constructed a graph with nearby discs joined by an edge. They performed region growing on lumen discs that were constrained by lines joining the nuclear discs. Nosrati and Hamarneh (2014) and Cohen et al. (2015) first classify tissue regions into different constituents and then employ a constrained level set algorithm to segment the glands. Sirinukunwattana et al. (2015) identified epithelial superpixels and used epithelial regions as vertices of a polygon approximating the boundary of a gland. Most of the methods discussed above first distinguish tissue regions and

then employ region growing or level sets to segment glandular regions. Recently, Li et al. (2017) proposed a slightly different approach where they first determine potential epithelial regions using lumen/background information and then identify connected epithelial cells to segment the glands using a multi-resolution cell orientation descriptor.

In this paper, we focus on deep learning based approaches using convolutional neural networks (CNNs). These have recently received a wealth of attention, due to state-of-the-art performance in recent computer vision tasks, including segmentation (Shelhamer et al. (2017); Ronneberger et al. (2015); Chen et al. (2017); Song et al. (2017)). The fully convolutional network (FCN) for segmentation is considered to be a benchmark for segmentation tasks using deep learning (Shelhamer et al. (2017)). The network performs pixel-wise classification to obtain the segmentation mask for a given input and consists of downsampling and upsampling paths. The downsampling path consists of convolution and max-pooling and the upsampling path consists of convolution and deconvolution (convolution transpose) layers. U-Net (Ronneberger et al. (2015)) is inspired by FCN but connects intermediate downsampling and upsampling paths to conserve the context information. Recently, Sadanandan et al. (2017) used the CellProfiler pipeline (Carpenter et al. (2006)) as an automatic way of generating ground truth to train the network and employed a variation of fully convolutional network inspired by the improvements in U-Net (Ronneberger et al. (2015)) and residual network architecture (He et al. (2016)) for cell segmentation. Kraus et al. (2016) use multiple instance learning (MIL) to simultaneously segment and classify cells in microscopy images. The binary instance classifier generates the predictions which are combined through an aggregate function in the MIL layer of the proposed network. However, this approach can be computationally expensive for solving a segmentation problem as multiple feature maps need to be aggregated using the global pooling function. DCAN (Chen et al. (2017)) employs a modified FCN that simultaneously segments both the objects and contours to assist separating clustered object instance. Another recently proposed multi-scale convolutional neural network (Song et al. (2017))

trains the network at different scales of the Laplacian pyramid and merges the
120 network in the upsampling path to perform segmentation. Xu et al. (2016,
2017) proposed a network that performs side supervision of boundary maps in
addition to the foreground. Manivannan et al. (2018) combined handcrafted
features with deep learning for segmentation, but this approach is computa-
tionally expensive as it not only requires calculation of features using classical
125 approaches but also a support vector machine (SVM) classifier to predict local
label patches.

2. Data Sets and Challenges

The data sets that we use in this paper come from two different sources. The
first data set contains images acquired using a multiplexed fluorescence micro-
130 scope, capable of acquiring images of multiple tags in a cyclic manner (Schubert
et al. (2006)), where our task was cell segmentation. The other two data sets are
Haematoxylin and Eosin (H&E) stained microscopic images collected as part of
open challenge contests. We use one of the data sets to evaluate nuclear seg-
mentation in four different tumour types (CPM) and the other one for gland
135 segmentation in colon cancer histology images (Sirinukunwattana et al. (2017)).
In this way, we demonstrate that the proposed network is capable of dealing
with diverse datasets and segmentation tasks.

2.1. Multiplexed Fluorescence Imaging Data

We first focus on segmentation of individual cells in multiplexed fluorescence
140 images using nuclear and membrane markers. In the fluorescence microscopy
images, this task is challenging for various reasons, for example relatively large
variation in intensity of captured signal and difficulty with separating neigh-
bouring cells. It requires careful tuning of the algorithm to make it robust to
intensity, shape, size and fusion of individual cellular regions. That process can
145 require experimentation with a variety of features and can be time consuming.
Membrane markers such as E-cadherin (or Ecad) mark the boundary of individ-

ual cells, but the intensity of the membrane markers varies depending on type and orientation of each cell which makes segmentation difficult.

A multi-channel fluorescence microscope known as the Toponome Imaging System (TIS) (Schubert et al. (2006)), acquired images of tissue samples from mouse pancreata. The TIS microscope is capable of capturing signals from multiple biomarkers, but for cell segmentation we employ only two channels corresponding to Ecad (membrane marker using FITC channel) and DAPI (nuclear marker). After segmentation work is completed, the other channels are available to study individual cells, and to group similar cells together for statistical purposes. We performed alignment and normalization of the multi-channel images using protocols designed for pre-processing of the TIS data (Raza et al. (2012, 2016)). Next, ground truth for image segmentation, marked by an expert biologist, was used for training.

Sample images of mouse pancreatic exocrine cells and endocrine cells are shown in Figure 3 as RGB composite images (enhanced for display), where membrane marker is shown in green, nuclear marker in blue and ground truth is overlaid in red with black boundaries. One can observe the variation in intensities of cell boundaries and that the nuclei are not always present and, if present, are not always positioned at the centre of the cell. This is because a tissue is a three-dimensional structure which is finely cut into multiple sections to obtain a two-dimensional image, which may or may not contain part of the cell containing the nucleus. Pancreatic cells are either endocrine cells, seen in the islets, or exocrine cells. Endocrine cells are more tightly packed and are smaller than exocrine cells. In addition, images with varying levels of signal-to-noise ratio (SNR) are expected in fluorescence microscopy images where not only the imaging apparatus but also antibody concentration, temperature and incubation times contribute to noise. These variations make segmentation a challenging task.

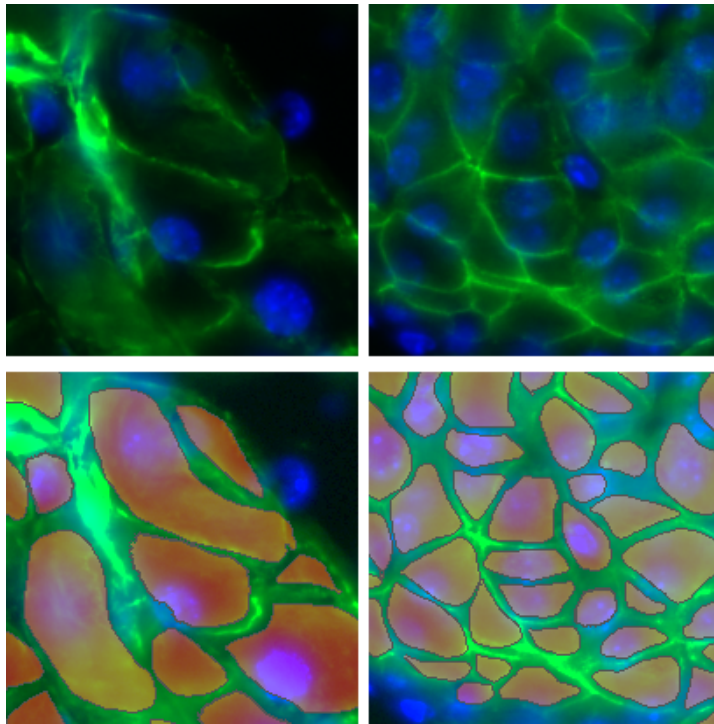


Figure 3: Top row: Membrane marker (Ecad-FITC) is shown in green and nuclear marker (DAPI) in blue. Bottom row: ground truth is overlaid in red with black boundaries. Left: Exocrine Cells. Right: Endocrine Cells.

175 *2.2. The Computational Precision Medicine (CPM) Data Set for nuclear seg-*
mentation

Nuclear segmentation can help understand the tumour microenvironment by studying features such as nuclear pleomorphism and nuclear morphology. Segmentation of nuclei in histology images is difficult, especially within tumour cells due to their heterogeneous nature with high variation in shape, size and chromatin pattern. The data set we use in this paper was published as part of a challenge contest at Medical Image Computing and Computer Assisted Interventions (MICCAI) 2017. The data set contains 32 training and 32 testing image tiles along with ground truth marking for nuclear segmentation, extracted from multi-tissue H&E stained histology slides. There is an equal representation

180
185

of glioblastoma multiforme (GBM), lower grade glioma (LGG), head and neck squamous cell carcinoma (HNSCC) and non-small cell lung cancer (NSCLC). A couple of example images (left) with corresponding ground truth outlined with green boundary (right) are shown in Figure 4.

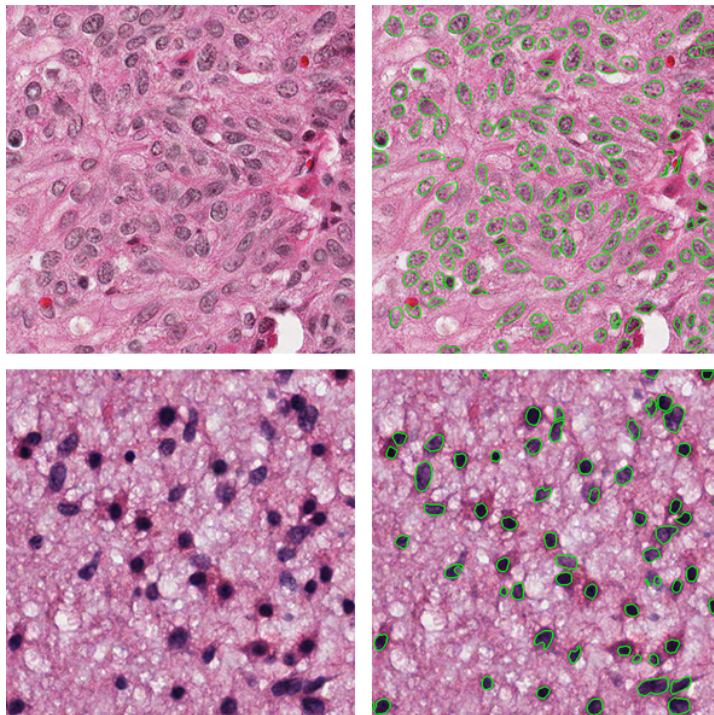


Figure 4: Left: Sample Images from the CPM data set. Right: Ground truth marking outlined in green colour on the sample images. Top row: head and neck squamous cell carcinoma. Bottom row: lower grade glioma.

190 2.3. Gland Segmentation (GLaS) Challenge Data Set

Histological assessment of glands is one of the key factors in colon cancer grading (Sirinukunwattana et al. (2017)). This requires a highly trained pathologist, is labour intensive, suffers from inter and intra-observer variability and has limited reproducibility. Due to complex nature of the problem, sophisticated algorithms are needed for successful automatic segmentation. Automatic
 195

segmentation of glands is challenging due to high variation in texture, size and structure of glands especially in malignant tissue. The third data set we use in this paper is the publicly available Warwick-QU data set published as part of the GLand Segmentation (GLaS) challenge (Sirinukunwattana et al. (2017)).

200 The data set consists of 165 images with the associated ground truth marked by expert pathologists. The composition of the data set is detailed in Table 1, whereas a few sample images from the data set are shown in Figure 5. In Figure 5, the top row shows sample images from benign cases, and the bottom row shows sample images from malignant cases. Figure 5 (c) has been taken from a moderately differentiated colon cancer tissue and (d) has been taken from a

205 a moderately differentiated colon cancer tissue and (d) has been taken from a poorly differentiated colon cancer tissue section. It is evident from these images that there is a large variation in the size, texture and structure of glands in both malignant and benign cases although the variation is greater in malignant cases.

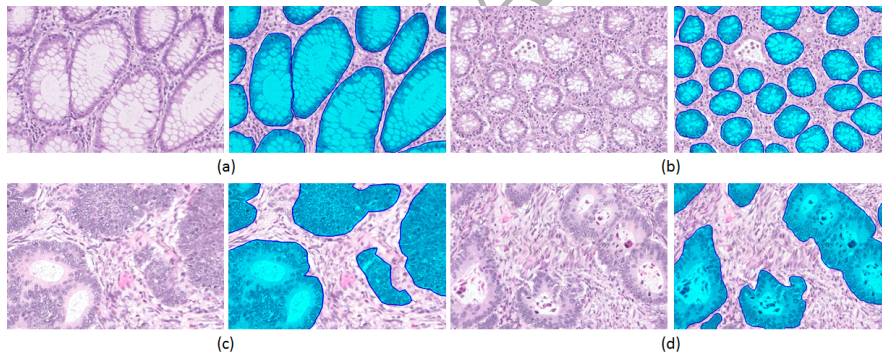


Figure 5: Sample images from the GLaS data set (Sirinukunwattana et al. (2017)). The images are shown in pairs, where the sample image on the left is overlaid on the right with the ground truth. The top row shows sample images from benign cases and the bottom row shows sample images from malignant cases. (a) & (b) show variation in size and structure of glands in benign cases, whereas (c) & (d) show variation in malignant colon cancer, where (c) is taken from a moderately differentiated sample and (d) is taken from a poorly differentiated (higher grade) cancerous sample.

Table 1: Composition of Warwick-QU data set.

Histologic Grade	Number of images		
	Training	Test A	Test B
Benign	37	33	4
Malignant	48	27	16

210 3. The Proposed Network

The architecture of proposed Micro-Net is shown in Figure 6. In the case of fluorescence images, the input to the network consists of two features, i.e., membrane and nuclear marker images, whereas in the case of H&E images the input to the network is a stain normalised RGB image. We perform stain normalisation² using the method proposed by (Reinhard et al. (2001)) to reduce
 215 the effect of stain variation from different labs and staining conditions. In both cases, the network performs batch normalisation at the input layer. The network is divided into five groups and thirteen branches, the division depending on their function and the set of layers/filters.

220 3.1. Group 1: Downsampling

The first group, which consists of four branches with output B1-B4, constructs the downsampling path. Each branch in Group 1 consists of convolution, max-pooling, resize and concatenation layers. The convolution and max-pooling layers perform standard operations as in conventional CNNs. We use
 225 *tanh* activation after each convolution layer as our experiments showed that the network converges faster with *tanh* activation than with ReLU. The resize layer resizes the image using bicubic interpolation so that the resized image dimension matches the corresponding dimension of the max-pooling output. We add the lower resolution input to retain the information from pixels that do not have
 230 the maximum response, because they are in the vicinity of a noisy neighbourhood. This is particularly useful when we are trying to retain tiny feature details

²<http://www2.warwick.ac.uk/fac/sci/dcs/research/tia/software/sntoolbox>

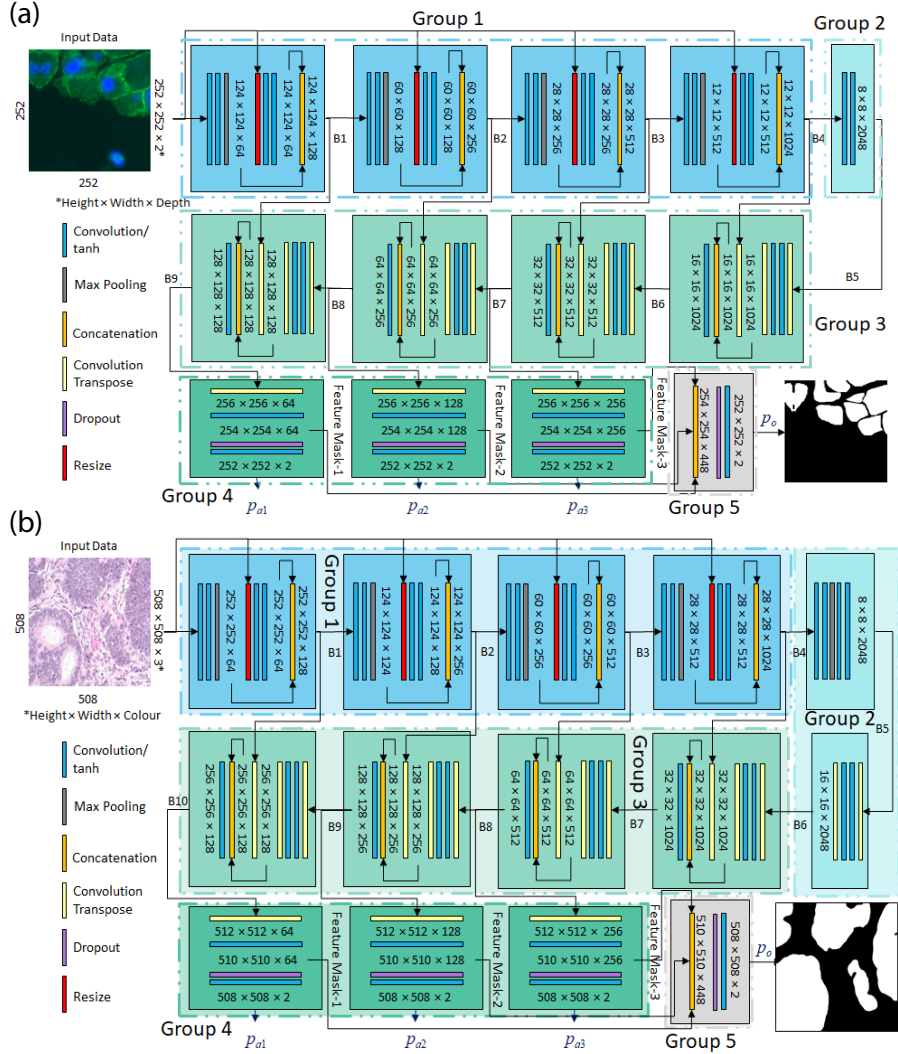


Figure 6: The proposed Micro-Net architecture. (a) Micro-Net-252 & (b) Micro-Net-508.

ignored during the max-pooling operation, for example, when trying to detect cells with boundary markers having extreme intensities, even for individual cells as shown in Figure 3. Another aspect of the resizing operation is to train the network on different sized cells/nuclei and glands as explained in Section 2. The output of branch 1 (B1) has feature depth of size 128 where the first half (64)

of the features are the result of the max-pooling operation and the next half (64) are obtained by performing convolutions only on the resized image. The following branches in Group 1 double the feature depth of the previous branch
 240 but follow the same protocol in generating the branch output. The only difference is that B1 performs batch normalisation at the input and the resize layer whereas B2-B4 perform batch normalisation at the resize layer only.

3.2. Group 2: Bridge

Group 2, consisting of B5, bridges the connection between the downsampling
 245 and upsampling paths, whose architecture is very similar to conventional CNN architectures.

3.3. Group 3: Upsampling

Group 3 forms the upsampling path and consists of branches B6, B7, B8 & B9. Each of these branches take two inputs, one from the previous branch and
 250 one from the branch with the closest feature dimension in the downsampling path. The output of each branch is double in height and width and half the depth of the previous branch. The second input is added from the downsampling path for better localization and to capture context information as in (Ronneberger et al. (2015)). It also passes the convolution only features to the upsampling
 255 path, which helps to learn from features which do not have maximum response in the downsampling path. Compared to U-Net (Ronneberger et al. (2015)), we add additional deconvolution layers instead of cropping the feature from the downsampling path. This allows us to produce a segmentation map of the same size as the input image and an overlap-tile strategy is not required. It also
 260 reduces the number of patches required to produce the desired segmentation output thus removing computational steps.

3.4. Group 4 & 5: Auxiliary and Main Output

Group 4 & 5 generate the auxiliary and main output and calculate the loss function. Group 4 consists of three branches where each branch takes

265 output from one of B7-B9 and generates three auxiliary feature masks, which
 are fed into the main output branch. The output branch concatenates feature
 masks and performs convolution followed by softmax classification to get the
 segmentation output map $p_o(x)$ where x represents a pixel location. The output
 of branches B7-B9 are of different resolutions and so the deconvolution layer in
 270 each of the auxiliary branches is set to generate the output of the same size
 (Chen et al. (2017)). The deconvolution is followed by a convolution layer
 which produces the auxiliary feature mask. Each of the auxiliary feature masks
 is followed by a dropout layer (set to 50%) and the convolution layer followed
 by softmax classification to get the auxiliary outputs $(p_{a1}(x), p_{a2}(x), p_{a3}(x))$.

275 3.5. Modifications for Gland Segmentation

For gland segmentation we slightly modified the network to train on a bigger
 patch size as shown in Figure 6(b). We doubled the input size to incorporate
 larger context to take account of the larger size of glands as compared individual
 cells. This modified architecture consists of five groups and fourteen branches
 280 where all five groups and the corresponding branches perform the same tasks
 as in Figure 6(a). However, the architecture of group 2 was slightly modified to
 learn deep features by adding an additional branch that performs deconvolution
 followed by convolution. The additional branch in group 2 was added so that the
 smallest feature patch size is (8×8) in line with the Micro-Net 252 architecture.
 285 The rest of the architecture remains the same except for the size of input/output
 for each branch.

3.6. Loss Function

For training, we calculate weighted cross entropy loss for the main output
 (l_o) and the auxiliary outputs (l_{a1}, l_{a2}, l_{a3}) as

$$l_k = \sum_{x \in \Omega} w(x) \log(p_{k(x)}(x)) \quad (1)$$

where $k \in \{o, a1, a2, a3\}$, as explained in Subsection 3.4 and Ω is the set of pixel
 locations in the input image. The weight function $w(x)$ gives higher weights

290 to pixels that are at the merging cell boundaries, leading to a higher penalty
 (Ronneberger et al. (2015)). The total loss (l) is calculated by combining aux-
 iliary and main loss by using $l = l_o + (l_{a1} + l_{a2} + l_{a3})/epoch$ where $epoch > 0$
 represents the number of training passes already made through the data. This
 strategy reduces exponentially the contribution of auxiliary losses for a higher
 295 $epoch$, avoiding reduction of the contribution by large steps (Chen et al. (2017)).

3.7. Data Augmentation

As deep learning algorithms require large amounts of data for training, we
 augment the data using barrel, pincushion and moustache distortion. While
 adjusting parameters we made sure by visual examination that the distortions
 300 created by these parameters were realistic and not too strong. For cell segmen-
 tation on fluorescence imaging data, we augmented the data by adding white
 Gaussian noise with mean 0 and variance in the range 0.0007 to 0.001, where
 for each patch the value of variance was randomly selected. For nuclear and
 gland segmentation we introduced Gaussian blur with a Gaussian filter of size
 305 12×12 , with σ ranging from 0.2 to 2. The value σ was randomly selected
 for each patch. In addition we rotate, and flip the images left, right, up and
 down. To train the network for cell/nuclear (gland) segmentation, we first ex-
 tract 300×300 (600×600) patches from the training data. If the size of image
 is smaller than 300 (600) in height or width, we symmetrically pad the image to
 310 increase its size. During training the network picks these patches in a random
 order for each $epoch$, choosing centres for the patches at random locations, and
 then cropping them to a size of 252×252 (508×508) patch before inputting.
 The proposed network was implemented using TensorFlow v0.12 (Abadi et al.
 (2015)). We start with a learning rate ($lr = 0.001$) and reduce it according to
 315 $lr = 0.001/(10^{(epoch/5)})$, which reduces the learning rate by a factor of 10 for
 every fifth $epoch$.

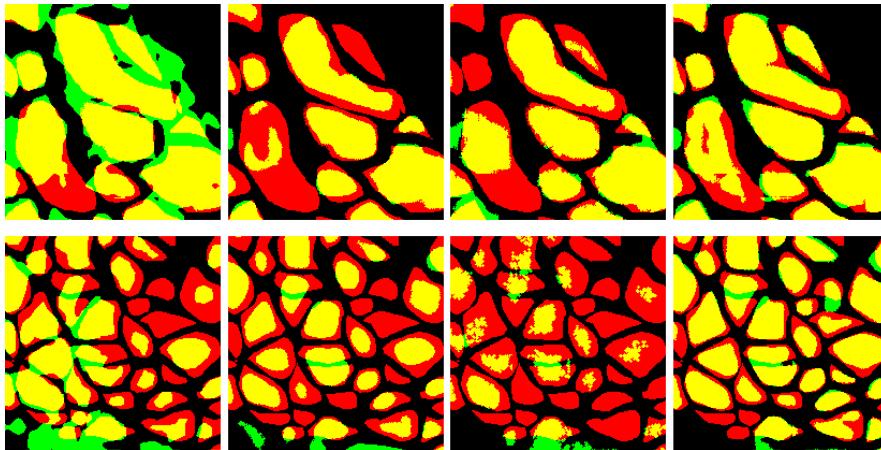


Figure 7: Segmentation results, ground truth in red, output of the algorithm in green and overlap between ground truth and output of algorithm in yellow. Top row: Exocrine region. Bottom row: Endocrine region. Columns (left to right) are output from FCN8, U-Net, DCAN and Micro-Net architectures.

4. Results and Discussion

4.1. Multiplexed Fluorescence Imaging Data

Our image data consists of 10 images of size 2048×2048 pixels (11,163 cells) of which 6 images (with approximately 60% i.e., 6,641 cells) are used for training and 4 images (with the remaining 40% i.e., 4,522 cells) for testing. During training, we used 20% of the data for validation. We compare our results with the state-of-the-art FCN8 (Shelhamer et al. (2017)), DCAN (Chen et al. (2017)) and U-Net (Ronneberger et al. (2015)) networks. To remove the bias we trained all the networks on the same training data obtained after augmentation. We used the authors' implementation of FCN8 and trained it for our data, whereas DCAN and U-Net were implemented in TensorFlow. The weights for the proposed network were initialised with truncated Gaussian and the network was trained for 25 epochs. The checkpoint was chosen based on the minimum validation loss. For U-Net and DCAN, we ran the network for 30 epochs but the criteria for choosing the [trained checkpoint file was the same](#) (i.e., best checkpoint was based on minimum validation loss.) The results (Figure 7) show that

FCN8 identified cellular regions but was not able to segment individual cells. DCAN is designed to learn the contour features and performed better segmen-
 335 tation of the cells in the exocrine region but performed poorly with smaller
 sized cells in the endocrine region. U-Net performed better than both FCN and
 DCAN but missed the cells with weaker boundaries. The proposed Micro-Net
 method, performed better in the presence of variable intensities and variable
 size/shape of the cells. The output in Figure 7 was post-processed for all the
 340 algorithms using area opening (100 pixels) and hole filling operations to get
 the final output score in Table 2. For quantitative analysis, we used measures
 which include Dice coefficient, F1 score, object Dice, pixel accuracy and object
 Hausdorff (Sirinukunwattana et al. (2017)). Better results correspond to smaller
 Hausdorff distance and all other measures larger. The quantitative results are
 345 shown in Table 2 which show that the proposed Micro-Net method outperforms
 the state-of-the-art deep learning approaches with at least 3-4% margin in terms
 of average Dice, F1 score, object Dice, pixel accuracy and object Hausdorff. We
 modified the FCN8 algorithm (FCN8W) by introducing weighted loss (Ron-
 neberger et al. (2015)) to improve segmentation of individual cells. FCN8W
 350 improved F1, object Dice, pixel accuracy and object Hausdorff but failed to
 increase the Dice coefficient. In addition, we add results for Micro-Net⁻ where
 we removed the multi-resolution input and the bypass layers. The results are
 slightly better compared to U-Net but not better than Micro-Net supporting
 the suggested changes in the design.

355 In addition to the above experiments we tested all the network architectures
 for their robustness to various levels of white Gaussian noise by controlling the
 SNR and generating the output for various network architectures. For this
 purpose we did not retrain the networks but used the already trained models as
 above. The values for Dice, F1, object Dice, pixel accuracy and object Hausdorff
 360 for various SNR values are given in Table 3, 4, 5, 6 and 7 respectively. For Dice
 coefficient, FCN8 and U-Net drop to 73% whereas the proposed method drops
 to 78%. However, DCAN shows a different behaviour and increases the Dice
 values by 2% taking the top spot at 1dB. In terms of the F1 score, all the

Table 2: Quantitative results for cell segmentation in terms of Dice coefficient, F1 score, Object Dice (OD), Pixel Accuracy (Acc) & Object Hausdorff (OH).

Network	Dice	F1	OD	PAcc	OH
FCN8 (Shelhamer et al. (2017))	78.54%	11.69%	7.49%	77.68%	1349.51
FCN8W	71.36%	50.53%	50.86%	74.61%	91.77
DCAN (Chen et al. (2017))	76.03%	61.41%	63.80%	78.67%	42.31
U-Net (Ronneberger et al. (2015))	78.39%	66.43%	67.35%	80.28%	40.49
Micro-Net ⁻	80.74%	69.87%	71.52%	82.22%	30.61
Proposed	82.43%	71.79%	74.12%	83.53%	27.53

networks drop to below 65% at 1dB where the proposed network retains the
 365 top position. The trend was similar with object Dice as well where the first
 position was retained by the proposed network. In terms of pixel accuracy,
 the proposed method dropped roughly 4% from 20dB to 1dB. DCAN however
 showed similar trend to Dice values i.e., increased pixel accuracy with increasing
 noise content. This is an interesting result, but if we carefully observe Dice and
 370 pixel accuracy both depend only on the pixels that are in agreement, whereas
 object Dice only takes into account the pixels which belong to the ground truth.
 Similarly, the F1 score takes into account not only true positives but also false
 positives. With increasing noise content, DCAN lost some of the false positives
 causing more pixels not belonging to the cellular region to agree. This increased
 375 pixel accuracy and Dice while simultaneously decreasing object Dice and the F1
 score. Object Hausdorff is a measure of similarity of the shape of cell boundaries
 and is lower for better performance. Here the author's implementation of FCN
 produced very high values, whereas with weighted loss (FCN8W) the values were
 in a comparable range. Additionally FCN8W values improved with increasing
 380 noise due to the resulting loss of many cell segmentations. U-Net increased 55

points from 20dB to 1dB noise which shows it's sensitivity to noise. DCAN performed better as it is designed to match the contours and only increased 12 points with increased noise content. However, the proposed network only increased 6 points showing the stability of the network and it's robustness to the noise. It is important to note here that Micro-Net⁻ shows the steepest decline in performance (in terms of Dice, F1, object Dice and pixel accuracy) with increasing noise content compared to U-Net, DCAN and Micro-Net. The decline is not much in the case of object Hausdorff as Micro-Net⁻ uses the multi-resolution output, and therefore shows robust shape similarity (on segmented cells) as shown by DCAN (which also utilises multi-resolution output). This further emphasises the role of multi-resolution input and the bypass layers.

Overall, the proposed network outperformed the recent deep learning models for various levels of noise in terms of Dice, the F1 score, object Dice, pixel accuracy and object Hausdorff. In terms of computation time, on average the network takes 2.50 sec/batch for training and 0.39 sec/batch for testing a batch of 5 images on a Windows10 machine with Intel Xeon E5-2670 v2 CPU, TitanX Maxwell GPU and 96 GB RAM. For 25 epochs, it took around 4.5 days to train the network.

Table 3: Quantitative results for cell segmentation of state-of-the-art algorithms in terms of Dice coefficient for various SNR values.

Network	20dB	15dB	10dB	5dB	3dB	1dB
FCN8 (Shelhamer et al. (2017))	77.55%	76.24%	76.97%	76.47%	75.26%	73.66%
FCN8W	71.56%	71.53%	71.39%	70.56%	69.36%	66.88%
DCAN (Chen et al. (2017))	77.18%	77.95%	78.92%	79.82%	79.91%	79.40%
U-Net (Ronneberger et al. (2015))	76.58%	76.61%	76.29%	75.59%	74.99%	73.45%
Micro-Net ⁻	81.35%	81.42%	80.72%	78.30%	76.04%	72.33%
Proposed	82.62%	82.69%	82.49%	81.37%	80.23%	78.52%

Table 4: Quantitative results for cell segmentation of state-of-the-art algorithms in terms of F1 score for various SNR values.

Network	20dB	15dB	10dB	5dB	3dB	1dB
FCN8 (Shelhamer et al. (2017))	16.69%	26.34%	15.25%	5.34%	4.33%	4.06%
FCN8W	49.41%	49.54%	49.07%	47.75%	48.24%	44.92%
DCAN (Chen et al. (2017))	62.33%	63.15%	63.65%	62.18%	61.58%	60.16%
U-Net (Ronneberger et al. (2015))	65.51%	65.01%	65.05%	63.18%	61.19%	58.27%
Micro-Net ⁻	70.43%	69.99%	68.95%	66.07%	63.23%	58.68%
Proposed	71.63%	71.59%	70.65%	69.19%	67.93%	64.67%

Table 5: Quantitative results for cell segmentation of state-of-the-art algorithms in terms of Object Dice for various SNR values.

Network	20dB	15dB	10dB	5dB	3dB	1dB
FCN8 (Shelhamer et al. (2017))	12.30%	23.47%	13.26%	5.27%	4.55%	4.50%
FCN8W	50.78%	50.77%	50.57%	50.28%	50.97%	51.01%
DCAN (Chen et al. (2017))	64.46%	65.36%	65.54%	64.22%	62.99%	61.61%
U-Net (Ronneberger et al. (2015))	65.61%	65.04%	64.42%	61.89%	60.37%	58.55%
Micro-Net ⁻	71.60%	71.28%	70.57%	68.28%	66.45%	63.11%
Proposed	73.90%	73.79%	72.98%	71.70%	70.42%	68.03%

4.2. Computational Precision Medicine (CPM) Data Set

400 Figure 8 shows the performance of the proposed method on CPM data set. Row 1-4 show sample images from head and neck squamous cell carcinoma

Table 6: Quantitative results for cell segmentation of state-of-the-art algorithms in terms of pixel accuracy for various SNR values.

Network	20dB	15dB	10dB	5dB	3dB	1dB
FCN8 (Shelhamer et al. (2017))	77.33%	77.54%	77.50%	75.19%	73.63%	72.14%
FCN8W	74.94%	74.92%	74.80%	74.10%	73.24%	71.67%
DCAN (Chen et al. (2017))	79.57%	80.18%	80.93%	81.42%	81.30%	80.55%
U-Net (Ronneberger et al. (2015))	78.64%	78.65%	78.30%	77.40%	76.80%	75.28%
Micro-Net ⁻	82.63%	82.65%	82.11%	80.37%	78.83%	76.39%
Proposed	83.69%	83.71%	83.48%	82.49%	81.52%	80.10%

Table 7: Quantitative results for cell segmentation of state-of-the-art algorithms in terms of object Hausdorff for various SNR values.

Network	20dB	15dB	10dB	5dB	3dB	1dB
FCN8 (Shelhamer et al. (2017))	1171.08	604.18	1176.88	1618.90	1700.83	1589.12
FCN8W	88.55	90.42	86.99	84.24	81.03	66.30
DCAN (Chen et al. (2017))	42.20	41.16	42.32	47.72	50.92	54.21
U-Net (Ronneberger et al. (2015))	55.53	63.53	62.50	85.48	97.49	100.15
Micro-Net ⁻	31.42	32.13	32.85	33.62	33.91	35.13
Proposed	27.98	28.35	29.64	30.73	31.69	33.84

(HNSCC), lower grade glioma (LGG), non-small cell lung cancer (NSCLC) & glioblastoma multiforme (GBM) respectively. Column 1 shows H & E image with ground truth outlined for nuclear segmentation. Column 2 shows an RGB composite image with ground truth in green and output of U-Net in red and overlap in yellow. Column 3 is similar to column 2. It shows an RGB com-

405

posite image with ground truth in green, the output of the proposed algorithm
 in red and the overlap in yellow. In HNSCC, on the lower left corner we can
 observe red cells, that are segmented by the proposed algorithm, but not picked
 410 during ground truth marking. On the other hand, on the top right, the algo-
 rithm undersegments, due to the relatively weak signal of the nuclei. In LGG,
 the proposed algorithm seems to oversegment where the ground truth might
 have been mistakenly marked on the nucleolus rather than on the nucleus of
 the cell. The algorithm seems to be struggling in these kinds of regions in
 415 NSCLC as well, where it missed segmenting the nuclei under darker shades.
 In GBM, the proposed algorithm misses a few cells with fainter nuclei. Over-
 all the performance of the algorithm seems good; however it seems to struggle
 with nuclei under multiple shades. U-Net on the other hand shows more red
 in all cases demonstrating oversegmentation. This is particularly noticeable in
 420 NSCLC where there seems to be a strong cytoplasmic shade. Micro-Net strug-
 gles in these circumstances but performs much better than U-Net due to its
 robustness. We quantitatively measure the performance of segmentation using
 two evaluation metrics as selected by the contest organisers (CPM), namely Tra-
 ditional Dice (Dice 1) and Ensemble Dice (Dice 2). Dice 1 measures the overlap
 425 between the ground truth and the prediction, whereas Dice 2 also penalises the
 prediction if there is a mismatch in the way segmentation regions are split. The
 overall score is then computed as the average of the two Dice coefficients. We
 compare our results with FCN8 (Shelhamer et al. (2017)), U-Net (Ronneberger
 et al. (2015)), SAMS-Net (Graham and Rajpoot (2018)) and the submissions
 430 in the competition. The results in Table 8 show that our method not only out-
 performs the results of contest winners but also recent deep learning methods
 such as SAMS-Net (Graham and Rajpoot (2018)).

4.3. Gland Segmentation Challenge (GLaS) Data Set

We used 85 images for training and 80 for testing, where 60 of the test images
 435 correspond to Test set A and the remaining 20 to Test set B. For quantitative
 analysis, we used Dice coefficient, F1 score, object Dice, pixel accuracy and

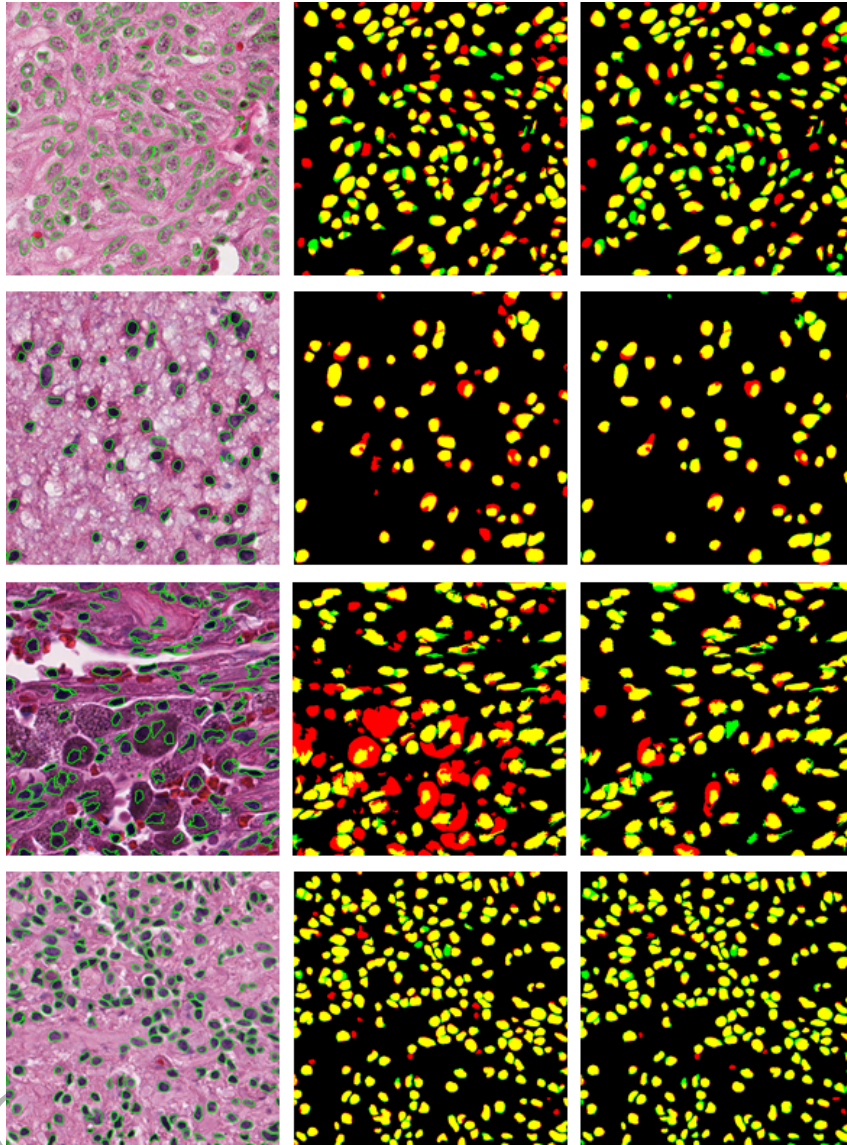


Figure 8: Top to Down: (1) HNSCC, (2) LGG, (3) NSCLC, (4) GBM. Left to Right: (1) H & E image with ground truth outlined for nuclear segmentation, (2) RGB composite image with ground truth in green and output of U-Net in red, (3) RGB composite image with ground truth in green and output of the proposed algorithm in red. Yellow is the overlap between the ground truth and the output of the algorithm.

Table 8: Cell segmentation results on CPM contest data set using evaluation metrics Dice 1 and Dice 2 as selected by the organisers.

Method	Dice 1	Dice 2	Score	Rank
Proposed	0.857	0.796	0.827	1
SAMS-Net (Graham and Rajpoot (2018))	0.855	0.769	0.812	2
U-Net (Ronneberger et al. (2015))	0.837	0.741	0.789	3
vuquocdang	-	-	0.783	4
brisker	-	-	0.773	5
FCN8 (Shelhamer et al. (2017))	0.829	0.697	0.763	6
Schwarz	-	-	0.703	7

object Hausdorff (Sirinukunwattana et al. (2017)). In the case of Hausdorff distance lower values are better; for other measures higher are better. The quantitative results are given in Table 9 which shows that our method produces competitive results compared to the state-of-the-art algorithms from the contest and ranks third after the recently proposed (Xu et al. (2017); Manivannan et al. (2018)) according the rank sum criteria set by the organisers. Xu et al. (2017) and Manivannan et al. (2018) employ optimised handcrafted features in addition to deep learning. Xu et al. (2017) on the other hand is heavily optimised for gland segmentation. Our algorithm employs only deep learning and is being proposed as a generic approach for cell, nuclear and gland segmentation, easily implemented using existing libraries optimised for GPU usage, which reduces the computational cost. Nevertheless, the proposed method performs competitively against recently proposed approaches and beats the conference version of Xu et al. (2016). Compared to the results of the contest on test A, the proposed algorithm performed best in terms of F1 and object Dice but ranked third and fifth on test B. In terms of object Hausdorff, which measures the shape similarity, it ranked second after CUMedVision2 (Chen et al. (2017)) on test A and Xu et al. (2016) on test B. Lower F1 and object Dice on test B suggests that our method missed more glands in malignant cases, whereas lower Hausdorff suggests higher

shape similarity to the ground truth extracted by our method. Qualitative results of the algorithm for sample images in Figure 5 are shown in Figure 9, where for each pair the image on first and second column show ground truth in green, output of DCAN (contest winner, the results were obtained from the contest organisers) and the proposed algorithm respectively in red and overlap of ground truth and output of algorithm in yellow. The image on the right shows the output of the proposed algorithm overlaid on the sample image. These results show that our algorithm clearly misses a few glands on the boundary of the image for which there is insufficient information. In the second row, it merges the glands at the bottom of the image and misses one gland. In malignant cases the algorithm seems to be rather ‘conservative’ in its approach when marking the boundary of glands. It can be observed in the third row for the two large glands at the bottom and in the fourth row for the smaller gland in the middle. All these glands show significant green inside the ground truth boundary, which at first suggests that the algorithm segmented the gland well inside the ground truth marking for the gland. However, when carefully observed in the overlay with the sample images the algorithm is faithfully following the boundary with tumor cells. For the large gland on the top right in third row the algorithm ‘oversegments’ the gland compared to the ground truth but again, looking at the overlay with the sample image, the algorithm has included tumor cells in the segmentation. Overall the algorithm performs a good job in segmenting the glands but needs to improve on the glands at the boundary of a patch. This limitation could be overcome by using overlapping patches from the whole slide and then merging the results. Compared to DCAN (first column), the proposed algorithm shows better overlap with the ground truth. It can be observed that DCAN is sensitive to white spaces and certain architecture in benign cases where it segments false regions. This can be clearly observed in cases from row 2, 3 & 4 and column 1. In the fourth row, it joins two glands together and under segments the smaller gland in the middle. It can also be observed that similar to the proposed algorithm, DCAN misses the glands at the boundary due to insufficient information. Overall the proposed algorithm performs better

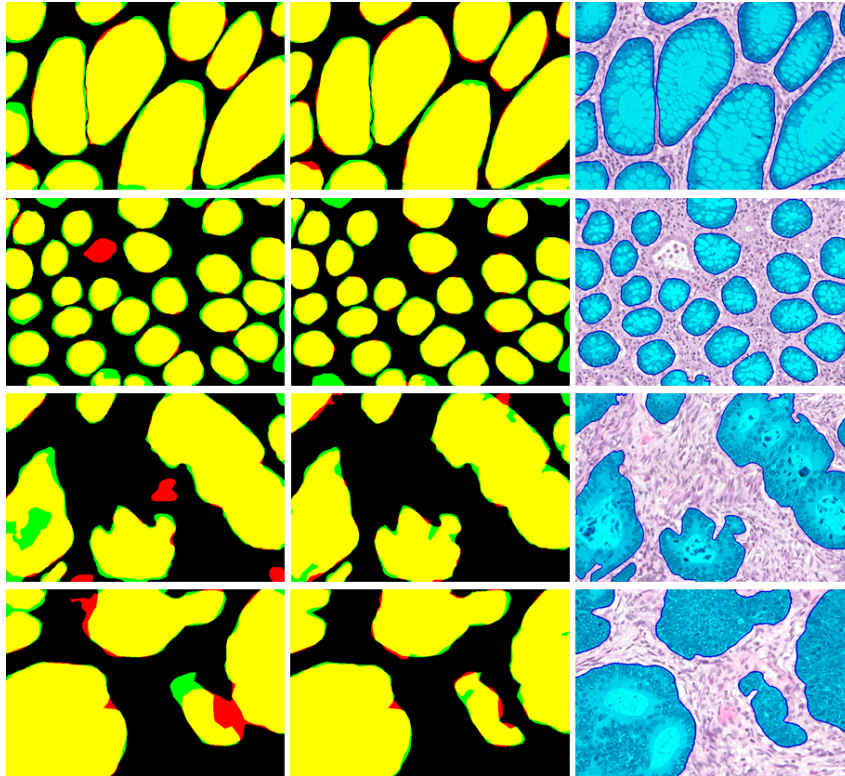


Figure 9: Results of the proposed network for sample images in Figure 5. First and second column show RGB composite images with output of the DCAN (Chen et al. (2017)) and the proposed algorithm respectively in red, ground truth in green and overlap of ground truth and output in yellow. The image in the third column shows the output of the proposed method overlaid on the sample image. The results for DCAN were obtained from the contest organisers.

in terms of qualitative and quantitative results.

5. Conclusions

In multi-channel fluorescence microscopy, cell segmentation can help to build molecular profiles of individual cells. However, images captured using fluorescence microscopy contain very weak and variable intensities that make it difficult to segment cells in these types of images. The variable size of the cells makes

Table 9: Quantitative comparison with the state-of-the-art methods. S and R in the table correspond to score and rank. It is important to note that Xu et al. (2017) and Manivannan et al. (2018) employ optimised handcrafted features in addition to deep learning. Xu et al. (2017) on the other hand is optimised for gland segmentation. The proposed generic CNN framework managed to compete with recently proposed algorithms optimised for gland segmentation which demonstrates its robustness.

Method	F1 score						Object Dice						Object Hausdorff						Rank Sum
	Test A		Test B		Test A		Test B		Test A		Test B		Test A		Test B				
	S	R	S	R	S	R	S	R	S	R	S	R	S	R	S	R			
Xu et al. (2017)	0.893	4	0.843	1	0.908	1	0.833	2	44.129	1	116.821	2	11						
Manivannan et al. (2018)	0.892	5	0.801	2	0.887	5	0.853	1	51.175	4	86.987	1	18						
Proposed	0.913	1	0.724	5	0.906	2	0.785	6	49.15	3	133.98	4	21						
Xu et al. (2016)	0.858	9	0.771	3	0.888	4	0.815	3	54.202	5	129.93	3	27						
CUMedVision2	0.912	2	0.716	7	0.897	3	0.781	8	45.418	2	160.347	10	32						
ExB1	0.891	6	0.703	8	0.882	8	0.786	5	57.413	10	145.575	5	42						
ExB3	0.896	3	0.719	6	0.886	6	0.765	9	57.350	9	159.873	9	42						
Freiburg2	0.870	7	0.695	9	0.876	9	0.786	5	57.093	7	148.463	7	44						
CUMedVision1	0.868	8	0.769	4	0.867	11	0.800	4	74.596	11	153.646	8	46						
ExB2	0.892	5	0.686	10	0.884	7	0.754	10	54.785	6	187.442	12	50						
Freiburg1	0.834	10	0.605	11	0.875	10	0.783	7	57.194	8	146.607	6	52						
CVML	0.652	12	0.541	12	0.644	14	0.654	11	155.433	14	176.244	11	74						
LIB	0.777	11	0.306	14	0.781	12	0.617	12	112.706	13	190.447	13	75						
vision4Glas	0.635	13	0.527	13	0.737	13	0.610	13	107.491	12	210.105	14	78						

it even more challenging for image processing algorithms to perform cell segmentation. In tumour histology slides, the morphology of nuclei and nuclear pleomorphism can help in making a diagnosis and in studying the tumour microenvironment but nuclear segmentation is difficult due to varying shape, size, chromatin structure and clumped nuclei. Similarly morphology of glands can help the pathologist to grade the cancer but it is also very challenging due to texture, size and structure of the glands. All these tasks require sophisticated segmentation algorithms. We have presented a deep learning architecture named Micro-Net that can be used to segment cells/nuclei and glands in fluorescence and H&E stained images with slight tuning of the [input](#) parameters. The proposed architecture allows the network to visualise input and output at multiple resolutions. The extra convolutional layers bypass the max-pooling layer, thus allowing the network to better train its parameters for weak features in addition to the strongly observed feature sets. This has been demonstrated by the robustness of algorithm to varying level of noise in fluorescence image data. Intermediate connections between the layers allow context and localization to be retained. The qualitative and quantitative results show that the Micro-Net architecture outperforms recently published deep learning approaches. We will make the fluorescence image data set publicly available subject to publication of this manuscript. The other two data sets we used in this paper are already publicly available. We showed that the proposed algorithm produces competitive results compared to the state-of-the-art. The results produced by the algorithm can be extended to build molecular profile in multiplexed fluorescence images, grade cancer or study tumour microenvironment.

6. Acknowledgements

We are grateful to the BBSRC UK for supporting this study through project grant BB/K018868/1.

520 **References**

- Computational precision medicine nuclei segmentation challenge website. <http://miccai.cloudapp.net/competitions/57>.
- Abadi M, Agarwal A, Barham P, Brevdo E, Chen Z, Citro C, Corrado GS, Davis A, Dean J, Devin M, Ghemawat S, Goodfellow I, Harp A, Irving G, Isard M, 525 Jia Y, Jozefowicz R, Kaiser L, Kudlur M, Levenberg J, Mané D, Monga R, Moore S, Murray D, Olah C, Schuster M, Shlens J, Steiner B, Sutskever I, Talwar K, Tucker P, Vanhoucke V, Vasudevan V, Viégas F, Vinyals O, Warden P, Wattenberg M, Wicke M, Yu Y, Zheng X. TensorFlow: Large-scale machine learning on heterogeneous systems. 2015. URL: <https://www.tensorflow.org/>; software available from tensorflow.org.
- 530 Awan R, Sirinukunwattana K, Epstein D, Jefferyes S, Qidwai U, Aftab Z, Mujeeb I, Snead D, Rajpoot N. Glandular morphometrics for objective grading of colorectal adenocarcinoma histology images. *Scientific reports* 2017;7(1):16852. doi:10.1038/s41598-017-16516-w.
- 535 Bergeest J, Rohr K. Efficient globally optimal segmentation of cells in fluorescence microscopy images using level sets and convex energy functionals. *Medical image analysis* 2012;16(7):1436–44. doi:10.1016/j.media.2012.05.012.
- Carpenter AE, Jones TR, Lamprecht MR, Clarke C, Kang IH, Friman O, Guertin DA, Chang JH, Lindquist RA, Moffat J, et al. Cellprofiler: image 540 analysis software for identifying and quantifying cell phenotypes. *Genome biology* 2006;7(10):R100. doi:10.1186/gb-2006-7-10-r100.
- Chen H, Qi X, Yu L, Dou Q, Qin J, Heng PA. Dcan: Deep contour-aware networks for object instance segmentation from histology images. *Medical Image Analysis* 2017;36(Supplement C):135–46. doi:10.1016/j.media.2016.11. 545 004.
- Cohen A, Rivlin E, Shimshoni I, Sabo E. Memory based active contour algorithm using pixel-level classified images for colon crypt segmentation. *Com-*

- puterized Medical Imaging and Graphics 2015;43:150–64. doi:10.1016/j.compedimag.2014.12.006.
- 550 Dimopoulos S, Mayer CE, Rudolf F, Stelling J. Accurate cell segmentation in microscopy images using membrane patterns. *Bioinformatics* 2014;30(18):2644–51. doi:10.1093/bioinformatics/btu302.
- Farjam R, Soltanian-Zadeh H, Jafari-Khouzani K, Zoroofi RA. An image analysis approach for automatic malignancy determination of prostate pathological images. *Cytometry Part B: Clinical Cytometry* 2007;72B(4):227–40. 555 doi:10.1002/cyto.b.20162.
- Graham S, Rajpoot NM. Sams-net: Stain-aware multi-scale network for instance-based nuclei segmentation in histology images. In: 2018 IEEE 15th International Symposium on Biomedical Imaging (ISBI 2018). 2018. p. 590–4. 560 doi:10.1109/ISBI.2018.8363645.
- Gunduz-Demir C, Kandemir M, Tosun AB, Sokmensuer C. Automatic segmentation of colon glands using object-graphs. *Medical image analysis* 2010;14(1):1–12. doi:10.1016/j.media.2009.09.001.
- He K, Zhang X, Ren S, Sun J. Deep residual learning for image recognition. In: 565 *Proceedings of the IEEE conference on computer vision and pattern recognition*. 2016. p. 770–8. doi:10.1109/CVPR.2016.90.
- Kraus OZ, Ba JL, Frey BJ. Classifying and segmenting microscopy images with deep multiple instance learning. *Bioinformatics* 2016;32(12):i52–9. doi:10.1093/bioinformatics/btw252.
- 570 Li G, Raza SEA, Rajpoot NM. Multi-resolution cell orientation congruence descriptors for epithelium segmentation in endometrial histology images. *Medical Image Analysis* 2017;37:91 – 100. doi:10.1016/j.media.2017.01.006.
- Li G, Sanchez V, Nagaraj P, Khan S, Rajpoot N. A novel multitarget tracking algorithm for myosin vi protein molecules on actin filaments in tirm sequences. *Journal of Microscopy* 2015;260(3):312–25. doi:10.1111/jmi.12299. 575

- Manivannan S, Li W, Zhang J, Trucco E, McKenna SJ. Structure prediction for gland segmentation with hand-crafted and deep convolutional features. *IEEE Transactions on Medical Imaging* 2018;37(1):210–21. doi:10.1109/TMI.2017.2750210.
- 580 Meijering E. Cell segmentation: 50 years down the road. *Signal Processing Magazine, IEEE* 2012;29(5):140–5. doi:10.1109/MSP.2012.2204190.
- Naik S, Doyle S, Agner S, Madabhushi A, Feldman M, Tomaszewski J. Automated gland and nuclei segmentation for grading of prostate and breast cancer histopathology. In: *Biomedical Imaging: From Nano to Macro, 2008. ISBI 2008. 5th IEEE International Symposium on. IEEE; 2008.* p. 284–7. 585 doi:10.1109/ISBI.2008.4540988.
- Nguyen K, Sarkar A, Jain AK. Structure and context in prostatic gland segmentation and classification. In: *Medical Image Computing and Computer-Assisted Intervention–MICCAI 2012. Springer; 2012.* p. 115–23. doi:10.1007/ 590 978-3-642-33415-3_15.
- Nosrati MS, Hamarneh G. Local optimization based segmentation of spatially-recurring, multi-region objects with part configuration constraints. *IEEE transactions on medical imaging* 2014;33(9):1845–59. doi:10.1109/TMI.2014.2323074.
- 595 Qaiser T, Tsang YW, Epstein D, Rajpoot N. Tumor segmentation in whole slide images using persistent homology and deep convolutional features. In: *Annual Conference on Medical Image Understanding and Analysis. Springer; 2017.* p. 320–9. doi:10.1007/978-3-319-60964-5_28.
- Raza SEA, Cheung L, Epstein D, Pelengaris S, Khan M, Rajpoot NM. Mimonet: A multi-input multi-output convolutional neural network for cell segmentation in fluorescence microscopy images. In: *2017 IEEE 14th International Symposium on Biomedical Imaging (ISBI 2017). 2017a.* p. 337–40. 600 doi:10.1109/ISBI.2017.7950532.

- Raza SEA, Cheung L, Epstein D, Pelengaris S, Khan M, Rajpoot NM. MI-
605 MONet: Gland Segmentation Using Multi-Input-Multi-Output Convolutional
Neural Network; Cham: Springer International Publishing. p. 698–706.
doi:10.1007/978-3-319-60964-5_61.
- Raza SEA, Humayun A, Abouna S, Nattkemper TW, Epstein DB, Khan M,
Rajpoot NM, et al. RAMTaB: robust alignment of multi-tag bioimages. PLoS
610 ONE 2012;7(2):e30894. doi:10.1371/journal.pone.0030894.
- Raza SEA, Langenkämper D, Sirinukunwattana K, Epstein D, Nattkemper
TW, Rajpoot NM. Robust normalization protocols for multiplexed fluo-
rescence bioimage analysis. BioData Mining 2016;9(1):11. doi:10.1186/
s13040-016-0088-2.
- 615 Reinhard E, Adhikhmin M, Gooch B, Shirley P. Color transfer between images.
IEEE Computer graphics and applications 2001;21(5):34–41.
- Ronneberger O, Fischer P, Brox T. U-net: Convolutional networks for
biomedical image segmentation. In: International Conference on Medi-
cal Image Computing and Computer-Assisted Intervention. 2015. p. 234–41.
620 doi:10.1007/978-3-319-24574-4_28.
- Sadanandan SK, Ranefall P, Le Guyader S, Wählby C. Automated training of
deep convolutional neural networks for cell segmentation. Scientific reports
2017;7(1):7860. doi:10.1038/s41598-017-07599-6.
- Schubert W, Bonnekoh B, Pommer AJ, Philippsen L, Böckelmann R, Malykh Y,
625 Gollnick H, Friedenberger M, Bode M, Dress AW. Analyzing proteome topol-
ogy and function by automated multidimensional fluorescence microscopy.
Nature biotechnology 2006;24(10):1270. doi:10.1038/nbt1250.
- Shelhamer E, Long J, Darrell T. Fully convolutional networks for semantic seg-
mentation. IEEE Transactions on Pattern Analysis and Machine Intelligence
630 2017;39(4):640–51. doi:10.1109/TPAMI.2016.2572683.

- Sirinukunwattana K, Pluim JP, Chen H, Qi X, Heng PA, Guo YB, Wang LY, Matuszewski BJ, Bruni E, Sanchez U, et al. Gland segmentation in colon histology images: The glas challenge contest. *Medical image analysis* 2017;35:489–502. doi:10.1016/j.media.2016.08.008.
- 635 Sirinukunwattana K, Snead DR, Rajpoot NM. A stochastic polygons model for glandular structures in colon histology images. *IEEE transactions on medical imaging* 2015;34(11):2366–78. doi:10.1109/TMI.2015.2433900.
- Song Y, Tan EL, Jiang X, Cheng JZ, Ni D, Chen S, Lei B, Wang T. Accurate cervical cell segmentation from overlapping clumps in pap smear images. *IEEE Transactions on Medical Imaging* 2017;36(1):288–300. doi:10.1109/TMI.2016.2606380.
- 640 Veta M, Van Diest PJ, Kornegoor R, Huisman A, Viergever MA, Pluim JP. Automatic Nuclei Segmentation in H&E Stained Breast Cancer Histopathology Images. *PLoS ONE* 2013;8(7):e70221. doi:10.1371/journal.pone.0070221.
- 645 Wu HS, Xu R, Harpaz N, Burstein D, Gil J. Segmentation of intestinal gland images with iterative region growing. *Journal of Microscopy* 2005;220(3):190–204. doi:10.1111/j.1365-2818.2005.01531.x.
- Xu Y, Li Y, Liu M, Wang Y, Lai M, Eric I, Chang C. Gland instance segmentation by deep multichannel side supervision. In: *International Conference on Medical Image Computing and Computer-Assisted Intervention*. Springer; 2016. p. 496–504. doi:10.1007/978-3-319-46723-8_57.
- 650 Xu Y, Li Y, Wang Y, Liu M, Fan Y, Lai M, Chang EIC. Gland instance segmentation using deep multichannel neural networks. *IEEE Transactions on Biomedical Engineering* 2017;64(12):2901–12. doi:10.1109/TBME.2017.2686418.
- 655 Yang X, Li H, Zhou X. Nuclei segmentation using marker-controlled watershed, tracking using mean-shift, and kalman filter in time-lapse microscopy. *IEEE*

Transactions on Circuits and Systems I: Regular Papers 2006;53(11):2405–14.
doi:10.1109/TCSI.2006.884469.

- ⁶⁶⁰ Yuan Y, Failmezger H, Rueda OM, Ali HR, Gräf S, Chin SF, Schwarz RF, Curtis C, Dunning MJ, Bardwell H, et al. Quantitative image analysis of cellular heterogeneity in breast tumors complements genomic profiling. *Science translational medicine* 2012;4(157):157ra143–. doi:10.1126/scitranslmed.3004330.