



Citation for published version:

Chen, L, Zang, J, Taylor, PH, Sun, L, Morgan, G, Grice, J, Orszaghova, J & Tello, M 2018, 'An experimental decomposition of nonlinear forces on a surface-piercing column: Stokes-type expansions of the force harmonics', *Journal of Fluid Mechanics*, vol. 848, pp. 42-77. <https://doi.org/10.1017/jfm.2018.339>

DOI:

[10.1017/jfm.2018.339](https://doi.org/10.1017/jfm.2018.339)

Publication date:

2018

Document Version

Publisher's PDF, also known as Version of record

[Link to publication](#)

Publisher Rights

CC BY

University of Bath

General rights

Copyright and moral rights for the publications made accessible in the public portal are retained by the authors and/or other copyright owners and it is a condition of accessing publications that users recognise and abide by the legal requirements associated with these rights.

Take down policy

If you believe that this document breaches copyright please contact us providing details, and we will remove access to the work immediately and investigate your claim.

An experimental decomposition of nonlinear forces on a surface-piercing column: Stokes-type expansions of the force harmonics

L. F. Chen^{1,4,†}, J. Zang^{1,†}, P. H. Taylor^{2,4}, L. Sun^{1,6}, G. C. J. Morgan^{1,3},
J. Grice², J. Orszaghova^{2,4} and M. Tello Ruiz⁵

¹WEIR Research Unit, Department of Architecture and Civil Engineering, University of Bath,
Bath BA2 7AY, UK

²Department of Engineering Science, University of Oxford, Oxford OX1 3PJ, UK

³Edenvale Young Associates Ltd., St Nicholas House, 31–34 High Street, Bristol BS1 2AW, UK

⁴Faculty of Engineering and Mathematical Sciences, University of Western Australia,
Crawley WA6009, Australia

⁵Centre for Marine Technology and Engineering (CENTEC), Technical University of Lisbon,
Instituto Superior Técnico, Avenida Rovisco Pais, 1049-001 Lisbon, Portugal

⁶Departments of Naval Architecture, Ocean and Structural Engineering, School of Transportation,
Wuhan University of Technology, Wuhan 430063, PR China

(Received 23 December 2017; revised 20 March 2018; accepted 17 April 2018)

Wave loading on marine structures is the major external force to be considered in the design of such structures. The accurate prediction of the nonlinear high-order components of the wave loading has been an unresolved challenging problem. In this paper, the nonlinear harmonic components of hydrodynamic forces on a bottom-mounted vertical cylinder are investigated experimentally. A large number of experiments were conducted in the Danish Hydraulic Institute shallow water wave basin on the cylinder, both on a flat bed and a sloping bed, as part of a European collaborative research project. High-quality data sets for focused wave groups have been collected for a wide range of wave conditions. The high-order harmonic force components are separated by applying the ‘phase-inversion’ method to the measured force time histories for a crest focused wave group and the same wave group inverted. This separation method is found to work well even for locally violent nearly-breaking waves formed from bidirectional wave pairs. It is also found that the n th-harmonic force scales with the n th power of the envelope of both the linear undisturbed free-surface elevation and the linear force component in both time variation and amplitude. This allows estimation of the higher-order harmonic shapes and time histories from knowledge of the linear component alone. The experiments also show that the harmonic structure of the wave loading on the cylinder is virtually unaltered by the introduction of a sloping bed, depending only on the local wave properties at the cylinder. Furthermore, our new experimental results reveal that for certain wave cases the linear loading is actually less than 40% of the total wave loading and the

† Email addresses for correspondence: lifen.chen@uwa.edu.au, chenlifen239@163.com,
J.Zang@bath.ac.uk

high-order harmonics contribute more than 60% of the loading. The significance of this striking new result is that it reveals the importance of high-order nonlinear wave loading on offshore structures and means that such loading should be considered in their design.

Key words: surface gravity waves, waves/free-surface flows, wave–structure interactions

1. Introduction

A transient resonant structural response due to high-frequency wave-induced loads can be expected to occur for offshore wind turbine columns and support structures. Such turbines are typically located in areas of high winds where they would also be exposed to large waves. The extreme wave loads are found to decompose into a fundamental component at close to the incident wave spectral peak frequency and higher harmonics of this linear component. These higher harmonics occur at frequencies that are close to integer multiples of the fundamental frequency due to nonlinearity in both the incident waves and in the wave–structure interactions. The contributions of second- and third-harmonic wave loads to this resonant excitation, known as ‘springing’ and ‘ringing’, have been discussed by Faltinsen, Newman & Vinje (1995) and Malenica & Molin (1995). Gurley & Kareem (1998) associated the cumulative effect of higher water particle velocities in steep waves with ringing of the vertical column. Tromans, Swan & Masterton (2006) found that there is a close link between high-frequency forces on the vertical cylinder and scattering of high-frequency waves around the cylinder. The high-frequency forces include nonlinear force components up to at least the fifth harmonic of the incoming waves. Grue, Bjørshol & Strand (1993), Chaplin, Rainey & Yemm (1997) and Grue & Huseby (2002) investigated the ringing response of vertical cylinders in laboratory experiments, and found that a secondary load cycle might have an important effect on the ringing response. A Fourier series expansion in force history suggests that there is a relationship between the occurrence of the secondary load cycle and the appearance of a pronounced higher harmonic force. Numerical investigations were presented by Paulsen *et al.* (2014), and these confirm that the secondary load cycle is associated with the fifth- and sixth-harmonic force components. Thus, accurate extraction of the harmonic structure of the extreme wave loading is important. In addition, other parameters that might affect ringing responses have been identified, such as variable cylinder wetting (Natvig 1994) and the height of the centre of gravity of the structure (Chaplin *et al.* 1997).

The importance of high-order nonlinear wave loading on offshore wind turbine foundations and the effect of seabed slope on the peak wave loading on such structures are studied experimentally in this paper. Unlike most previous experiments, focused wave groups rather than regular or random waves were generated in our model tests for investigating extreme events impacting on an offshore structure. The use of periodic waves with the wave height and period corresponding to some extreme conditions does not consider the random and spectral broadband properties of ocean waves, and might lead to inaccuracy in the estimation in fluid loads for practical applications (Tromans, Anaturak & Hagenmeijer 1991). The realization of prolonged random sea states in the laboratory is very inefficient, although this gives a much better representation of the broadband nature of real ocean waves. Reflection of waves in finite-sized wave tanks is another issue that limits the use of random

waves. A focused wave group in which both the amplitude and phase of the Fourier components are carefully controlled is a good alternative, which overcomes some of these shortcomings. It has been widely used in the field of offshore engineering for studying extreme events from a given random sea state of known spectral content. The investigations presented by Jonathan & Taylor (1997), and Zang *et al.* (2006) indicate that the linear and bound harmonic contributions to large ocean waves and their local interaction with a body can be captured quite accurately by using the focused wave group technique. Bredmose & Jacobsen (2011) investigated breaking wave loads on a monopile foundation numerically by application of the focused wave group technique consistent with a Joint North Sea Wave Project (JONSWAP) sea state. The focused wave groups based on an energy density spectrum derived from field data and also a theoretical Gaussian spectrum have been applied to define the inputs to the physical and numerical models by Vyzikas *et al.* (2013) and Stagonas, Buldakov & Simons (2014), respectively.

The use of focused wave groups allows extraction of the higher harmonics in wave–structure interactions by using the ‘phase-inversion’ method described by Baldock, Swan & Taylor (1996), Hunt *et al.* (2004), Borthwick *et al.* (2006) and Zang *et al.* (2006, 2009), and more recently generalized by Fitzgerald *et al.* (2014). The ‘phase-inversion’ method assumes that there is a generalized Stokes-like perturbation expansion in focused wave groups and responses. Hence, a decomposition of the total force into odd and even harmonics by making use of the phase difference in incident focused waves is possible. The odd terms contain linear components: third harmonic, fifth harmonic etc. Likewise, the even terms only contain second-harmonic difference, second-harmonic sum, fourth harmonic, and so on. The higher harmonic nonlinear contributions to the wave loads can then be extracted by digital frequency filtering. This technique, utilized by Zang *et al.* (2010) among others, was shown to be appropriate in describing the dynamics of the interaction.

The main purpose of the experiments presented here was to investigate the loading driving a ringing response of a model offshore wind turbine foundation on a flat bed, with emphasis on accurate extraction of the harmonic structure of the extreme wave loads. The cylinder was also located midway up a 1:20 plane slope with the same local water depth as the flat bed tests to investigate the effect of the sloping bed on the nature of the incident waves and the loading on the cylinder. It is our aim that the well-documented experimental data should reveal the important physics and also provide a useful dataset for validating existing numerical methods such as computational fluid dynamic codes (CFD) based on the Navier–Stokes equations (Chen *et al.* 2014), potential-flow solvers both to second order in the frequency domain (Sun *et al.* 2016) and fully nonlinear in the time domain (Fitzgerald *et al.* 2014). This paper is organized as follows. The experimental set-up is described in § 2. In §§ 3 and 4 the underlying assumptions and mathematical principles of the two-phase harmonic separation method are summarized briefly. The application of this separation method to experimental data is presented in § 5 and the effect of bed slope on the measured forces is investigated in § 6. In §§ 7 and 8, the harmonic structure of the hydrodynamic force is investigated using the Huseby and Grue scalings. Finally, § 9 contains the main conclusions.

2. Experiments

2.1. Experimental set-up

A series of model tests on wave–structure interactions was carried out at the Danish Hydraulic Institute (DHI), Denmark. The shallow water basin measuring 35 m by

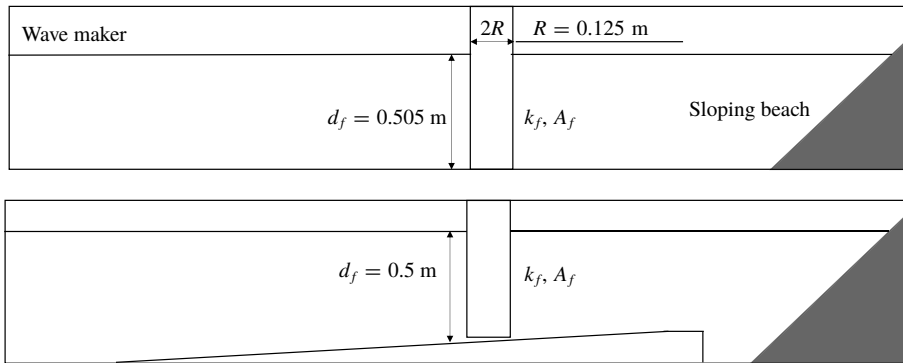


FIGURE 1. The schematic overview of the experimental set-up.

25 m was used, with a constant water depth of 0.505 m above a flat bed. An array of 36 numerically controlled piston-type wave paddles was used to generate various experimental conditions of interest, including regular waves and unidirectional and bidirectional wave groups with a specified set of frequency components. A single vertical cylinder of diameter 0.25 m (radius $R = 0.125$ m) was located 7.8 m from the wave paddles in the centre of the basin. This was supported from above by a stiff triangular frame via four load cells at the top of the column. There was a thin gap of 1 mm between the bottom of the cylinder and the basin floor, permitting measurement of the total horizontal force via the load cells at the top.

In addition, a sloping 1-in-20 smooth cement bed was installed. The slope began 6 m upstream of the centre of the cylinder, and terminated before emerging from the water, with the crest of the slope at a depth of 0.2 m before a vertical downward step in the bed. The water depth at the wave paddle was 0.8 m, which reduced to 0.5 m at the centre of the cylinder after 6 m of the slope, allowing comparison of results with the flat bed cases. The schematic overview of the experimental set-up is shown in figure 1. $R = 0.125$ m is the radius of the cylinder.

The incident wave field characterized in § 2.2 was based on the records at wave gauge 9 (WG9) for tests without the cylinder in place. The layout of the wave gauges can be seen in figure 2. WG19, which was placed 7.8 m away from the wave paddle and 3 m off the centre line, was almost completely unaffected by scattering of waves from the column. Thus, this gauge was used to check the repeatability of wave runs with and without the cylinder in place. Excellent repeatability was achieved until times after the main group had passed the cylinder and weak scattered components propagated far to the gauge.

Figure 3(a) also shows that the cylinder was surrounded by an array of wave gauges. Also visible in figure 3(a) is the strain gauge array at the top of the cylinder which was used to measure the total horizontal load applied to support the entire dynamic system. A linear force transfer function was derived to extract the hydrodynamic force from the measured total force signal. This is to be discussed in more detail later. Additionally, wave-induced pressures were measured at four vertical locations on the upstream stagnation line on the cylinder, and the wave kinematics adjacent to the column were measured with an acoustic Doppler velocimeter (ADV). This paper is focused on the wave loads on the cylinder.

The consequent violent impact induced by an incident breaking wave is shown in figure 3(b). The wave impact against the cylinder causes a mass of water to

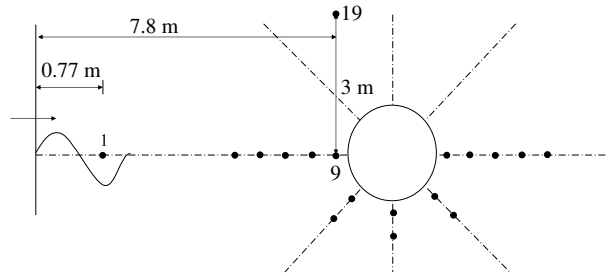


FIGURE 2. The arrangement of wave gauges in the water basin.

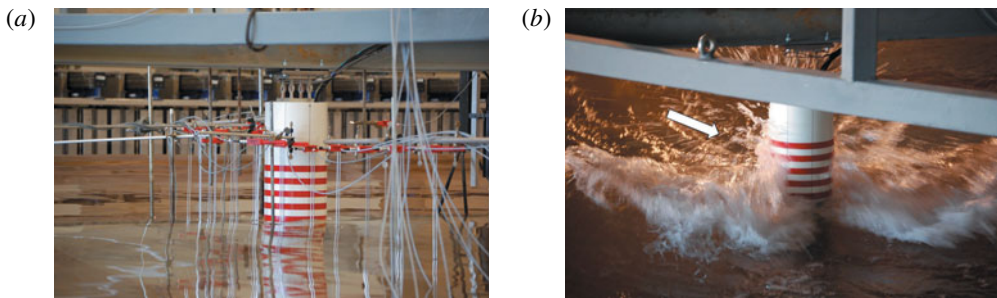


FIGURE 3. (Colour online) The experimental set-up (a) and a violent wave event on the cylinder induced by an incident breaking wave (b). Photos were taken by Henrik Bredmose of DTU.

be projected vertically upwards as a thin sheet of water which wrapped around the upstream half of the cylinder, seen in figure 3(b). Such sheets have also been reported by Chaplin *et al.* (1997) and Stansberg *et al.* (2005), among others, in their experiments. A recent study of breaking wave loads on monopiles is reported by Stansby, Devaney & Stallard (2013).

2.2. Incident wave field

A range of wave conditions with varying wave steepness and spectral peak wave frequencies were tested. The wave steepness was varied from very small, close-to-linear waves up to spilling and plunging breakers. A focused wave group (NewWave) consistent with a JONSWAP spectrum with $\gamma = 3.3$ was used because it has proved to be a good representation for large waves in severe storms in the North Sea (Taylor & Williams 2004). The use of focused wave groups provides a model for transient events. It has the advantage that the experimental results are not contaminated by reflected waves over the time of interest, as discussed in Chen *et al.* (2014). In this context we take the average shape of a large event in a linear random Gaussian process to be described by the autocorrelation function of that process (Lindgren 1970; Boccotti 1983), so the required wave profile in time at the focus point is simply the cosine Fourier transform of the energy spectrum in frequency for the assumed underlying linear process. We also assume that such a wave group can be constructed at the cylinder by using linear paddle generation and the linear dispersion equation. In addition to unidirectional waves, the paddles were set up to generate two identical wave groups crossing with a wave direction of $\beta = \pm 20^\circ$ so

that they impact the cylinder simultaneously, giving a very violent wave–structure interaction.

In order to apply the separation method presented by Jonathan & Taylor (1997) to extract the harmonic structure of wave loading on the cylinder, both crest focused waves (C) and trough focused waves (T) were generated in pairs. C and T have the same frequency content but a phase difference of 180° (π rads). In these experiments, T can be obtained by multiplying the paddle signal by (-1) , assuming linear wave generation in the tank. All wave groups were approximately focused at the front stagnation point of the cylinder, 7.8 m away from the wave paddles. There was some shift in this focusing due to the nonlinear dispersion of the wave groups between the paddle and the cylinder, predominately third-order wave–wave interaction, see Baldock *et al.* (1996), so that this did not affect the relative phasing between the C and T groups. As a consequence, some of the recorded wave groups were focused better than others and there was a discrepancy between the target and measured linear crest value of the incident focused wave at the desired focal point.

The undisturbed wave field was characterized at the position where the cylinder would be mounted. Based on the time series at WG9, which is the intended focal point in the absence of the cylinder, the actual peak of the linear envelope in time can be obtained using the ‘phase-inversion’ separation method. This is defined as A_f in this paper. Correspondingly, the wavenumber at the focal point based on the frequency of the incident spectral peak energy f_p is labelled as k_f . For each matching crest and trough wave group, the wave slope $A_f k_f$ at the focal point is listed in table 1. It can be seen that the ratio of the actual peak of the linear envelope to the cylinder radius A_f/R is up to 1, corresponding to the ratio of the maximum wave height (H) of the incoming waves to the cylinder radius $\max(H)/R \sim 2$. And the cylinder size ($k_f R$) ranges from 0.188 to 0.753. This is relevant to the field scale conditions where the dynamic responses are expected to occur, i.e. kR values are typically approximately (0.15–0.3) and the wave height is comparable to the cylinder diameter.

2.3. Hydrodynamic force

Four load cells were used to measure the total horizontal force between the top of the cylinder and the support frame. This force includes both the hydrodynamic force from the incident wave and the effects of the cylinder dynamics. These dynamic effects on the total force must be removed to allow estimation of the pure hydrodynamic load on the cylinder. The structural resonant peak cannot simply be removed from the signal with a low-pass filter because the high-frequency components that excite ‘ringing’ are of considerable interest for the hydrodynamic analysis.

Assuming that the cylinder set-up can be modelled as a simple spring–mass–damper system, a simple linear transfer function TF can be defined to allow the removal of the additional part of the force reaction into the support frame due to the structural vibration,

$$TF(\omega) = 1 - \left(\frac{\omega}{\omega_0}\right)^2 + 2\zeta \left(\frac{\omega}{\omega_0}\right) i, \quad (2.1)$$

where ω_0 is the resonant frequency and ζ is the linear structural damping coefficient, which can be estimated by a ‘push’ test. One of the effects of the transfer function (2.1) is to introduce a frequency-dependent phase shift, this is accounted for in the damping term. The inferred damping value includes both structural and fluid damping. In the ‘push’ test, the cylinder was forced to displace by applying a horizontal steady force by hand, and then suddenly removing the force to allow the cylinder to oscillate

f_p (Hz)	k_f (m ⁻¹)	$k_f R$	$k_f d_f$	Flat bed cases		Sloping bed cases	
				A_f (m)	$A_f k_f$	A_f (m)	$A_f k_f$
0.49	1.505	0.188	0.760	0.013	0.020	0.018	0.027
				0.028	0.042	0.036	0.054
				0.056	0.084	0.070	0.106
				0.081	0.122	0.096	0.144
				0.101	0.152	0.111	0.167
						0.119	0.179
0.61	1.971	0.246	0.995	0.026	0.051	0.032	0.063
				0.052	0.103	0.061	0.120
				0.090	0.177	0.105	0.207
0.82	2.985	0.373	1.507	0.023	0.070	0.027	0.081
				0.041	0.122	0.049	0.146
				0.075	0.224	0.079	0.237
				0.090	0.269	0.099	0.296
1.22	6.020	0.753	3.040	0.013	0.080	0.015	0.091
				0.023	0.139	0.025	0.150
				0.041	0.246	0.044	0.265
				0.049	0.293	0.050	0.297

TABLE 1. Incoming wave fields for both the flat and sloping bed cases.

freely in still water until the motion ceased. The total horizontal force reaction for the cylinder was recorded and used to obtain the resonant frequency and the structural damping by using the fast Fourier transform (FFT) analysis. The values of ω_0 and ζ were found to be 23.5 rad s⁻¹ (3.88 Hz) and 0.009, respectively, valid for the entire decay. The transfer function TF is convolved with the total horizontal support force signal. Then a good estimate of the hydrodynamic force time history can be obtained by simply performing an inverse FFT calculation. Spectral components above 6.5 Hz are removed. This is the highest frequency that contains the fifth-harmonic information for the shortest wave case.

Figure 4 shows the force spectra and time histories for incident focused wave groups with peak frequency $f_p = 0.61$ Hz and actual linearized peak amplitude $A_f = 0.090$ m ($k_f A_f = 0.177$). The vertical axis is the energy spectral density of force (Force ESD), which is a square of amplitude of each Fourier component. The results for both trough and crest focused wave groups are included. It can be seen that the obvious resonant peak from the measured data at 3.88 Hz has been removed by applying the structural response transfer function. Accordingly, the structural oscillations in the time histories have been removed, leaving a much smoother signal for the hydrodynamic loading. It is striking how much structural dynamics is induced by the crest focused wave impact and how little by the equivalent trough focused case, for this example.

2.4. Strong nonlinearity

Both unidirectional groups and a bidirectional pair of unidirectional groups with directions at $\beta = \pm 20^\circ$ to the tank central line are studied. Figure 5 shows force time histories for wave groups hitting the cylinder on the flat bed, and the corresponding

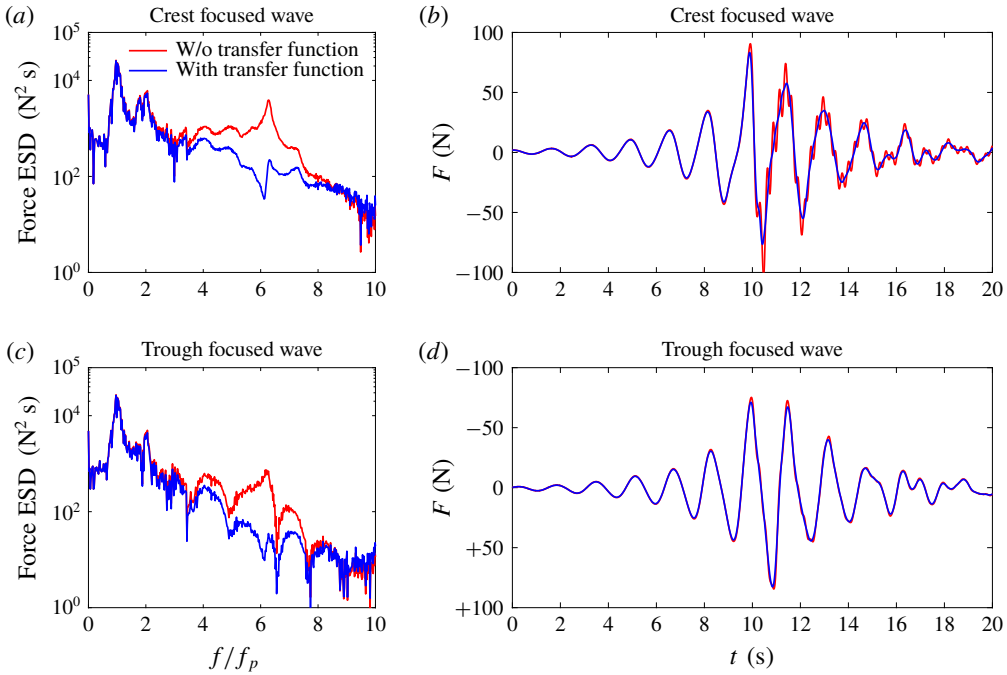


FIGURE 4. (Colour online) Force spectra and time histories for both crest and trough focused wave groups, before and after the transfer function is applied to remove the ‘ringing response’. ESD: energy spectral density. The frequency of the incident peak energy $f_p = 0.61$ Hz and the crest value of the incident focused wave group $A_f = 0.090$ m ($k_f A_f = 0.177$). Note the vertical flip of the trough focused force signal.

force and elevation spectra. The frequency of the peak spectral energy is 0.49 Hz and the peak of the linear wave envelope is 0.101 m ($k_f A_f = 0.152$). The time histories of the free-surface elevation at the focal point in the absence of the cylinder are shown in figure 5(a,c) and the horizontal forces on the cylinder are shown in figure 5(b,d). Figure 5(a,b) shows the results for the unidirectional case and figure 5(c,d) shows the results for the bidirectional case. Each of the two component wave groups used to produce the bidirectional wave in figure 5(c,d) is the same as that shown figure 5(a,b). Spectra for the incident wave surface elevation and the resulting force for the bidirectional case are shown in figure 5(e,f). For the bidirectional groups, the time series and the corresponding spectra after the transfer function is applied are also shown in the plots. It can be seen from the free-surface motions that the two identical wave groups combined to hit the cylinder simultaneously, giving a combined breaking wave of approximately twice the height of the individual groups. The shape of the force time signal for the bidirectional input waves is very different from that for the unidirectional wave. The associated force spectrum is much flatter with increasing frequency than the surface elevation spectrum, showing that the harmonics are much more important. The strong local oscillations in the force time histories for the bidirectional case suggest there exist large higher frequency force components which trigger a vigorous ringing response of the structure.

The possibility of the excitation of the ‘ringing’ response of the cylinder due to the higher-order forces beyond the second harmonic of the incident waves is clear. These

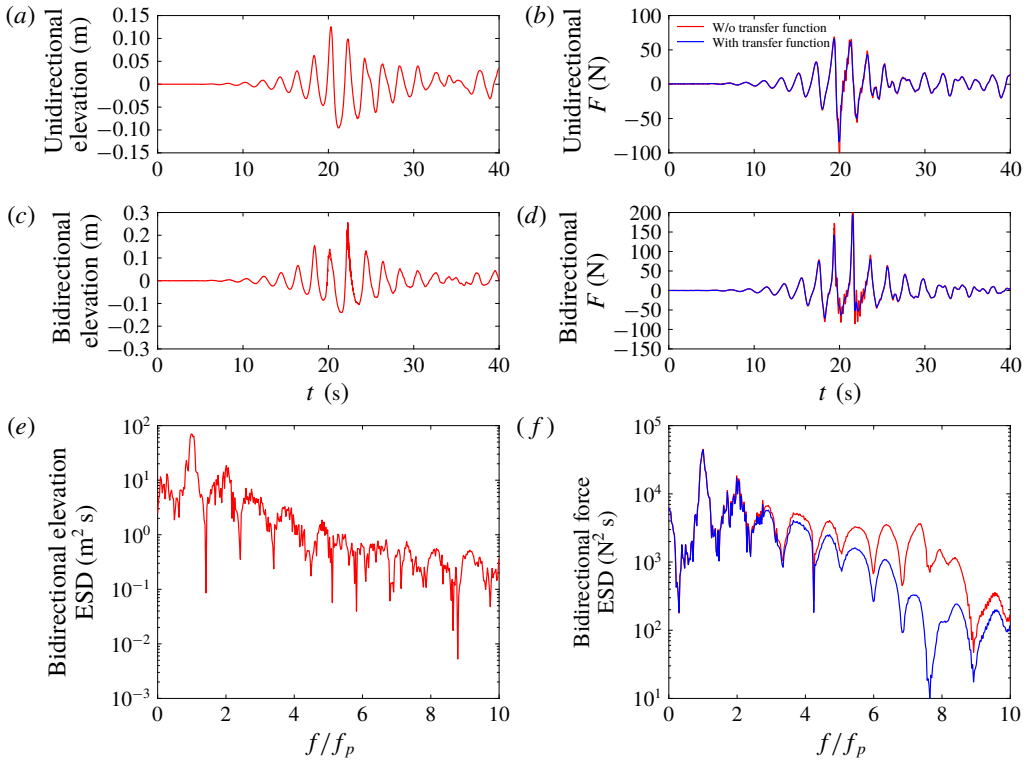


FIGURE 5. (Colour online) Wave forces on the cylinder: incident wave time histories (*a,c*) and horizontal forces on the cylinder (*b,d*), for a unidirectional group (*a,b*) and a bidirectional pair $\pm 20^\circ$ (*c,d*). (*e,f*) Incident wave surface elevation energy spectrum (*e*), force energy spectrum (*f*), both for a bidirectional incident wave pair only. The frequency of the incident peak energy $f_p = 0.49$ Hz and the crest value of the incident focused wave group $A_f = 0.101$ m ($k_f A_f = 0.152$).

effects have been investigated previously by many authors, including Faltinsen *et al.* (1995), Newman (1996) and Chaplin *et al.* (1997). It is worth noting that not only the large third-order component as described in the Faltinsen–Newman–Vinje potential-flow model (FNV model) (Faltinsen *et al.* 1995) but also fourth- and fifth-harmonic excitation were observed in our model tests and by many others. The FNV model only predicts hydrodynamic loads up to third order from weakly nonlinear wave kinematics.

3. The harmonic structure of the hydrodynamic force

For a regular wave the surface elevation can be written in non-dimensional form as

$$\frac{\eta}{A} = \cos \theta + S_{EE2} \left(\frac{A}{R} \right) \cos(2\theta) + S_{EE3} \left(\frac{A}{R} \right)^2 \cos(3\theta) + \dots, \quad (3.1)$$

where the linear phase function is $\cos \theta$ and the wave amplitude is A . The radius of the cylinder is R . The second-order coefficient of this Stokes series is S_{EE2} , the number in the subscript denoting that this is a second-order term, and the subscripts EE denoting the second-order free-surface elevation written in terms of the linear elevation.

For regular waves on deep water we have $S_{EE2} = (1/2)kR$ and $S_{EE3} = (3/8)(kR)^2$. Of course introducing the cylinder radius R is not necessary for the free-surface elevation.

We generalize (3.1) to a slowly varying wave group, i.e. $\cos \theta$ is equivalent to η_1 , the double-frequency term $\cos(2\theta)$ is equivalent to $(\eta_1^2 - \eta_{1H}^2)$ etc., where η_1 is the linear time history of the free-surface elevation and η_{1H} its Hilbert (90° shifted) transform. The Hilbert transform is used to shift by 90° every Fourier component within a signal. This is a generalization of $\cos(\theta) \rightarrow \sin(\theta)$ for a single component. The linear term η_1 is non-dimensional. The peak value of the envelope in time is unity. The variation of η_1 in time captures both the phase and group effects. Thus the free-surface elevation is approximated as

$$\frac{\eta}{A} = \eta_1 + S_{EE2} \left(\frac{A}{R}\right) [\eta_1^2 - \eta_{1H}^2] + S_{EE3} \left(\frac{A}{R}\right)^2 [\eta_1(\eta_1^2 - 3\eta_{1H}^2)] + \dots \quad (3.2)$$

The terms in square brackets are double- and triple-frequency terms with $\theta = 0$ crests in phase with those of the linear component η_1 .

In experiments, we can run a pair of wave cases, a crest focused wave group and an inverted trough focused group, by multiplying the linear paddle signal by (-1) . This can be viewed as $A \rightarrow (-A)$, or equivalently the phase $\theta \rightarrow (\theta + \pi)$. Then

$$\frac{1}{2} \left(\left(\frac{\eta}{A}\right)_{crest} - \left(\frac{\eta}{A}\right)_{trough} \right) = \eta_1 + S_{EE3} \left(\frac{A}{R}\right)^2 [\eta_1(\eta_1^2 - 3\eta_{1H}^2)] + \dots \quad (3.3)$$

$$\frac{1}{2} \left(\left(\frac{\eta}{A}\right)_{crest} + \left(\frac{\eta}{A}\right)_{trough} \right) = S_{EE2} \left(\frac{A}{R}\right) [\eta_1^2 - \eta_{1H}^2] + \dots \quad (3.4)$$

Equations (3.3) and (3.4) have only odd and even harmonics, respectively. For irregular waves, this combination is helpful for identifying the individual harmonics.

For the force exerted on a vertical surface-piercing cylinder, we use the Huseby and Grue scaling $\rho g R^3 (A/R)^n$ for the n th-order harmonic force. ρ and g are the water density and the acceleration due to gravity, respectively. We write a Stokes-like approximation for the total in-line hydrodynamic force as

$$\frac{F}{\rho g R^3} = S_{FE1} \left(\frac{A}{R}\right) [\alpha_{FE1} \eta_1 + \beta_{FE1} \eta_{1H}] + S_{FE2} \left(\frac{A}{R}\right)^2 [\alpha_{FE2} (\eta_1^2 - \eta_{1H}^2) + \beta_{FE2} (2\eta_1 \eta_{1H})] + \dots \quad (3.5)$$

with $(\alpha_{FE_n}^2 + \beta_{FE_n}^2) = 1$.

These $(\alpha_{FE_n}, \beta_{FE_n})$ terms represent phase shifts between the nonlinear harmonics of force and elevation. The subscripts of the Stokes-like coefficients S_{FE_n} show that these relate the force in terms of the surface elevation for the n th harmonic. Of course for a sufficiently slender cylinder, S_{FE1} becomes the linear inertia coefficient from the Morison equation. This form is equivalent to that used by Newman (1996) for the generalization of the FNV model for irregular waves, except that we neglect the nonlinear subharmonic components such as the second-order frequency difference term.

For the detailed comparisons of the structure of the force harmonics, we use an alternative version of (3.5) where the phase functions are based on the linear force component,

$$\frac{F}{\rho g R^3} = S_{FE1} \left(\frac{A}{R}\right) [\alpha_{FF1} f_1 + \beta_{FF1} f_{1H}] + S_{FE2} \left(\frac{A}{R}\right)^2 [\alpha_{FF2} (f_1^2 - f_{1H}^2) + \beta_{FF2} (2f_1 f_{1H})] + \dots \quad (3.6)$$

Since phase is now defined relative to that of the linear force, the first term reduces to $[f_1]$ and the linear force can be written as $F_1 = S_{FE1} \rho g R^2 A [f_1]$. We test the structure of this form (3.6) against experimental measurements by:

- (1) the term by term scalings in wave amplitude $(A/R)^n$;
- (2) the location and shape in time of the envelope of the n th-harmonic force against the envelope of the linear force component to the n th power $(f_1^2 + f_{1H}^2)^{(n/2)}$;
- (3) and the phasing of the n th harmonic of force to a least-squares-fitted approximation for the n th-harmonic phase function using α_{FFn} and β_{FFn} .

Finally in § 8 we show that our hypothetical form for the entire harmonic structure can be written in terms of the linear component of force alone, with no reference to the associated undisturbed free-surface elevation at the position of the loaded cylinder. This form is as follows. We write the linear component as

$$F_1 = \mathcal{F}_1 f_1, \quad (3.7)$$

where \mathcal{F}_1 is the peak value of the envelope of F_1 in time and f_1 carries all the phase information and group structure as previously. Then the assumed form for the total force in time becomes

$$\begin{aligned} \frac{F}{\rho g R^3} &= \frac{\mathcal{F}_1}{\rho g R^3} [f_1] + S_{FF2} \left(\frac{\mathcal{F}_1}{\rho g R^3} \right)^2 [\alpha_{FF2}(f_1^2 - f_{1H}^2) + \beta_{FF2}(2f_1 f_{1H})] \\ &+ S_{FF3} \left(\frac{\mathcal{F}_1}{\rho g R^3} \right)^3 [\alpha_{FF3} f_1 (f_1^2 - 2f_{1H}^2) + \beta_{FF3} (f_{1H} (3f_1^2 - f_{1H}^2))] + \dots \end{aligned} \quad (3.8)$$

Now the force approximation contains Stokes-like amplitude terms $\mathcal{F}_1/(\rho g R^3)$ based on the peak amplitude of the linear force component, non-dimensional force coefficients at each order S_{FFn} , and phase coefficients $(\alpha_{FFn}, \beta_{FFn})$, with $(\alpha_{FFn}^2 + \beta_{FFn}^2) = 1$, as previously.

4. Data processing

In order to fit the coefficients of the perturbation series (3.6), we need both the undisturbed incident wave field η and the total hydrodynamic load F . Given that each harmonic for a wave group is spread over a range of frequencies, we make use of the ‘phase-inversion’ method of Baldock *et al.* (1996), Hunt *et al.* (2004), Borthwick *et al.* (2006) and Zang *et al.* (2006). The crest and trough focused combinations $(C - T)/2$ for the odd harmonics and $(C + T)/2$ for the even harmonics now have the nonlinear harmonics better separated in frequency. This is shown in (3.3)–(3.4).

Each n th harmonic is separated out in frequency over a range of f_p , centred about nf_p , where f_p is the peak frequency of the fundamental harmonic. There is a ramp down and ramp up at the ends of the filter passband.

The ‘phase-inversion’ method described above achieves clean separation only when the crest and trough signals are aligned, occurring at identical times. If the time alignment is not perfect, so the phase difference between these two signals is not 180° , the odd and even harmonics cannot be completely separated. Some leakage will then occur from the odd/even harmonics into the assumed even/odd spectra components. In order to minimize the ‘leakage’ resulting from timing misalignment, the minimum of the cross-correlation between crest and trough signals is calculated and the relative time shift to bring them into alignment can be found accordingly.

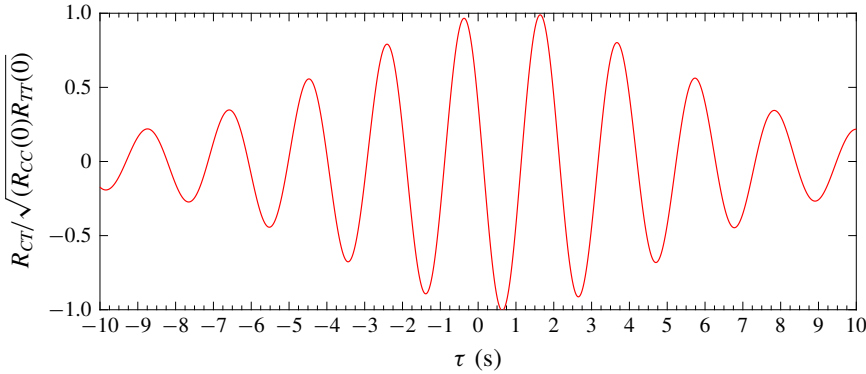


FIGURE 6. (Colour online) The cross-correlation $R_{CT}(\tau)$ for the focused wave group with a peak frequency of 0.49 Hz and an actual linearized peak amplitude of 0.101 m, with $k_f A_f = 0.152$.

This lack of automatic alignment arose because the wave generation software available at DHI could not be synchronized with the data acquisition system used for the wave gauges and force transducers.

The standard definition of the cross-correlation is used,

$$R_{CT}(\tau) = \int_{-\infty}^{\infty} F_{xC}(t)F_{xT}(t + \tau) dt, \tag{4.1}$$

where F_{xC} and F_{xT} are the time series of the horizontal force for crest focused wave groups and trough focused wave groups, respectively. τ is the shift in time, and τ_0 at which the value of R_{CT} is minimum is the time shift needed to minimize the leakage. The crest and trough signals are band-pass filtered over the range $(0.8f_p-1.5f_p)$ before the correlation function is calculated. This removes almost all of the bound harmonics from the signals.

As an example, the cross-correlation $R_{CT}(\tau)$ for the focused wave group with peak frequency of 0.49 Hz and actual linearized peak amplitude of 0.101 m ($k_f A_f = 0.152$) is shown in figure 6. It can be seen that $\tau_0 = 0.64$ s at which $R_{CT}(\tau)$ is a minimum is the shift required to align the signals. Thus, the crest signal is shifted 0.64 s forwards relative to the trough signal, and the aligned crest and trough signals are shown in figure 7(a). The quality of the alignment can be assessed by examining the spectra of the now separated odd and even harmonics, as shown in figure 7(b). A log-scale is used on the vertical axis to show the low level of the f_p component in the even harmonics, and the clear separation of the even harmonic peaks in one plot and the odd harmonics in the other. The odd harmonics have obvious peaks in the spectrum at $\sim f_p, 3f_p, 5f_p$ and the even harmonics at $\sim 2f_p, 4f_p, 6f_p$, as expected. The filtered spectra for force harmonics up to fifth with the filter windows are shown in figure 8.

The envelopes of the harmonics in time of the wave loading are calculated to display the structure of the force signal in time, and an envelope of a poorly focused wave group is also useful to indicate the time at which the peak of the wave group occurs.

Given the assumption that there is a generalized Stokes-type perturbation expansion for a wave group for both elevation and force, we propose that the envelope of each harmonic starting at second order might be approximated from the envelope

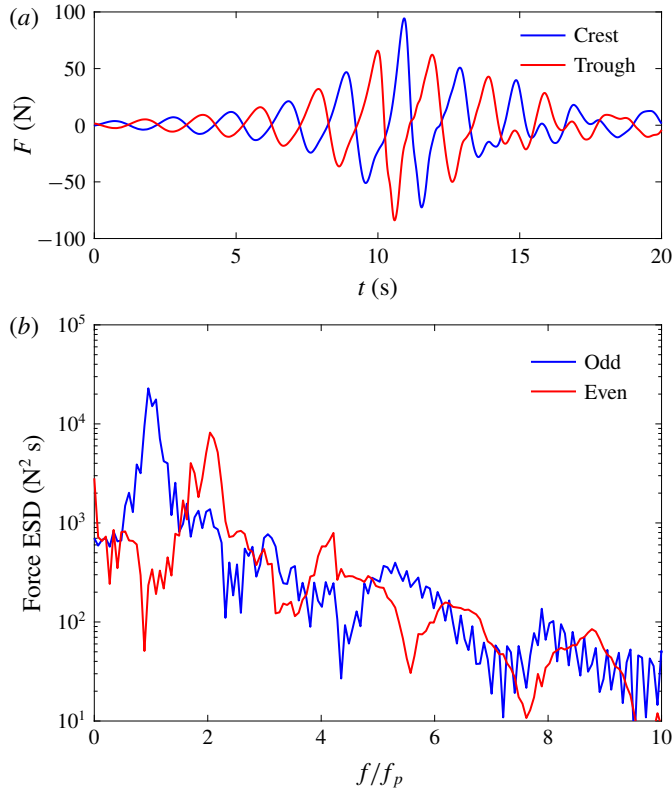


FIGURE 7. (Colour online) The cross-correlation alignment for the focused wave group with a peak frequency of 0.49 Hz and an actual linearized peak amplitude of 0.101 m, with $A_f k_f = 0.152$. (a) Signals aligned, leakage minimized. (b) The separated odd and even harmonic spectra.

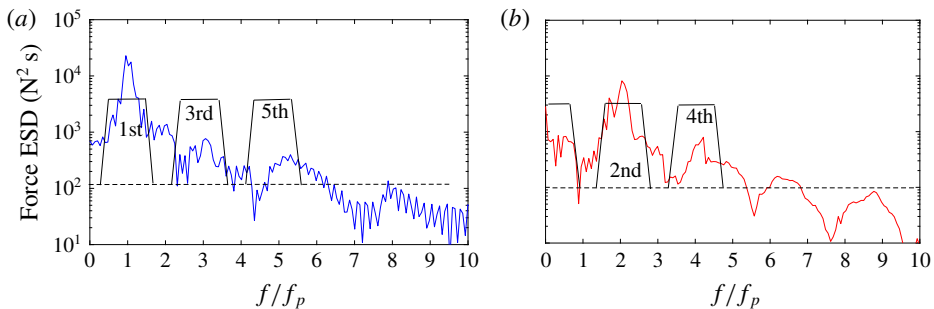


FIGURE 8. (Colour online) The filtered spectra for the focused wave group with a peak frequency of 0.49 Hz and an actual linearized peak amplitude of 0.101 m, with $A_f k_f = 0.152$. (a) The separated odd harmonic spectra. (b) The separated even harmonic spectra.

of the linear component. The approximated envelopes of n th harmonics are obtained by raising the fundamental envelope to the power n , and are then scaled to fit the measured envelopes of the n th-harmonic component by a least-squares method. In

addition to the envelopes, the actual time history at a higher harmonic can also be approximated by the linear component time history.

As an example of phase identification, we write the measured second-order sum harmonic of force as

$$F_2 = \mathcal{F}_2 f_2, \tag{4.2}$$

where f_2 contains the phase and group structure of the measured component F_2 . This has unit peak amplitude, \mathcal{F}_2 is the peak value of the envelope of the measured force component F_2 . Then using (3.8) f_2 is modelled as

$$\alpha_{FF2}(f_1^2 - f_{1H}^2) + \beta_{FF2}(2f_1 f_{1H}). \tag{4.3}$$

The phase functions (α_{FF2} , β_{FF2}) are estimated by

$$\alpha_{FF2} = \frac{\int_{t_1}^{t_2} f_2(f_1^2 - f_{1H}^2) dt}{\int_{t_1}^{t_2} (f_1^2 - f_{1H}^2)^2 dt}, \quad \beta_{FF2} = \frac{\int_{t_1}^{t_2} f_2(2f_1 f_{1H}) dt}{\int_{t_1}^{t_2} (2f_1 f_{1H})^2 dt}. \tag{4.4a,b}$$

The limits of the integrals are set by the duration of harmonics. The phase of the harmonic force component relative to the linear force component is then defined as $\phi_n = \arctan(\beta_{FF2}/\alpha_{FF2})$. Similar expressions for the surface elevation were derived for harmonics of the free-surface elevation by Walker, Taylor & Eatock Taylor (2004).

5. Spectral decomposition

Figure 9 shows the extracted harmonic structure for two different wave groups using the method described above. These wave groups are based on JONSWAP sea states with $\gamma = 3.3$ and a peak frequency $f_p = 0.61$ Hz. Figure 9(a) is a unidirectional wave group with actual linearized peak amplitude $A_f = 0.052$ m ($k_f A_f = 0.103$) and figure 9(b) is a unidirectional wave group with actual linearized peak amplitude $A_f = 0.090$ m ($k_f A_f = 0.177$), both on the flat bed.

The top plot in each of the figures is the total horizontal wave loading on the cylinder for both crest and trough focused waves. The crest and trough signals shown here have the best possible alignment to minimize the energy leakage between adjacent force harmonics. The succeeding plots below show the long-wave difference component, linear, second, third, fourth and fifth sum harmonics, respectively. The envelopes of the linear components are obtained based on the envelope of the linear undisturbed free-surface elevation discussed previously. The envelopes of n th harmonics above second order are obtained by raising the fundamental envelope to the power n and are plotted on the top of the corresponding harmonic components in figure 9, after being scaled by a least-squares method to match the size of the maximum of the measured n th-order harmonics.

It can be seen that the applied two-phase separation technique works well for these two cases. The extracted harmonics fit the estimated envelopes fairly well although some discrepancies are found. The slightly mismatch for the linear component in figure 9(a) corresponds to a difference between the envelope of the undisturbed free-surface elevation and the force signal. In particular, the peak in the envelope of the force is slightly delayed by 0.5 s, and these errors for the reconstructed harmonics building up and are, thus, larger for higher harmonics. The error waves from the paddle result in a small secondary pulse observed in the second-order

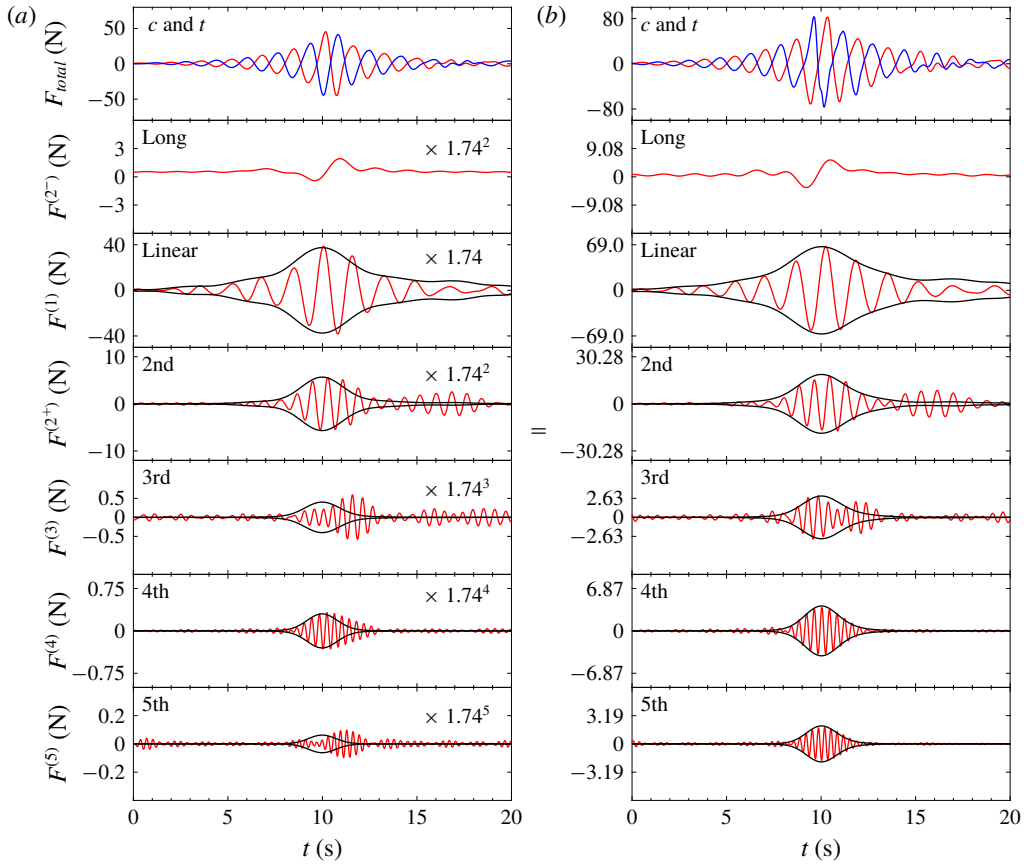


FIGURE 9. (Colour online) The harmonic structures of horizontal wave loading on the cylinder and the envelopes for both focused wave groups with $A_f = 0.052$ m and 0.090 m propagating in a flat bed. The peak frequency $f_p = 0.61$ Hz. (a) Unidirectional: $A_f = 0.052$ m ($k_f A_f = 0.103$), (b) unidirectional: $A_f = 0.090$ m ($k_f A_f = 0.177$).

harmonic at approximately $t = (14\text{--}19)$ s in figure 9. The control signal sent to the paddle was linear while the waves generated were inherently nonlinear. The wiggles of the third-order harmonic are too broad for its approximated envelope, and the peak force does not align well with the peak of the estimated envelope obtained by raising the linear envelope to the third power. Additionally, some later waves in addition to the main packet are observed in the third-order force (more obvious in figure 9a). This slight mismatch could be due to several factors, such as the third-harmonic term that arises from the $u|u|$ term in Morison drag, a contribution from nonlinear free-surface ringing forces in potential flow (Faltinsen, Newman & Vinje 1996; Chaplin *et al.* 1997), and the secondary load cycle due to short and steep waves around the surface of the cylinder (Grue & Huseby 2002). The analysis of (Fitzgerald *et al.* 2014) suggests that even for fully nonlinear potential flow the third harmonic is in a real sense ‘different’ from the others, with extra nonlinear dynamics occurring, supportive of the FNV analysis of (Faltinsen *et al.* 1996).

From figure 9, we see that the shape of higher harmonic loads in time can be matched quite well to the envelope of the linear component raised to the appropriate

power. These approximate envelopes for each harmonic can be used to predict the corresponding envelopes of higher force components for an incident wave group with the same peak period and an arbitrary amplitude by multiplying the scaling factor s raised to the power n due to the assumption that there is a generalized Stoke-type perturbation expansion for a wave group. The scaling factor s is set by the ratio of the maximum values of the linearized wave elevation envelope in the two cases being compared. Thus s^n becomes a direct check on the Stokes-like amplitude scalings of the two cases. The idea of amplitude scaling is investigated in figure 9. A direct comparison between the harmonic plots in the figure 9(a,b) is made by scaling the vertical axis by s^n for the n th-order harmonic. The ratio of the peaks of the envelopes for the linear force components between figure 9(a,b) is 1.74, consistent with the ratio in peak linear amplitudes of surface elevation for the two incident wave groups. The scaling coefficient for each harmonic(s) is shown on the right of each plot in figure 9(a). It can be seen from the pairs of figures for each harmonic that the Stokes scaling applies quite well for all the nonlinear harmonics. The slightly increased differences in amplitude at fourth- and fifth-order harmonic are expected, as the effect of any slight error due to misalignment increases with each harmonic.

Figure 10 shows the equivalent results for a pair of bidirectional cases with different amplitudes ($A_f = 0.094$ m, $k_f A_f = 0.19$) and ($A_f = 0.126$ m, $k_f A_f = 0.248$). Each of the two component groups used to produce the bidirectional waves shown in figure 10 is the same as those shown in figure 9. It can be seen that the applied two-phase separation technique works quite well even for the violent bidirectional harmonic group.

A sloping 1-in-20 bed was also installed in the tank. Figure 11(a) shows results of a unidirectional wave group with actual linearized peak amplitude $A_f = 0.064$ m ($k_f A_f = 0.125$) and figure 11(b) is a unidirectional wave group with larger amplitude $A_f = 0.102$ m ($k_f A_f = 0.201$), both with peak frequency of 0.61 Hz. These are similar wave groups to those shown in figure 9 except for the change in the tank geometry to the sloping rather than flat bed. As in figure 9, the axes in figure 11(b) are all scaled by the scaling factor to the appropriate power to allow comparison between those two wave groups that have the same peak frequency but different wave amplitude. The scaling factor is 1.73 for the sloping bed case. Except for the third harmonic of the force the two figures are still comparable, with close matching in wave shapes and sizes of each harmonic, which indicates that the Stokes-type perturbation expansion also applies even in the cases with a sloping bed.

Thus, we have demonstrated that for each nonlinear n th harmonic for force, the envelope \sim (shape of linear component envelope) $^n \times (A_f/R)^n$. So, the envelope shapes and magnitudes of each harmonic are consistent with a Stokes-type perturbation expansion. We now go further and examine the time history of the n th force harmonic. Using the narrow-band approximation outlined in (3.6) generalized to all the sum harmonics, we attempt to reconstruct the complete time history of each harmonic using only the linear component, an amplitude coefficient and a phase angle at each harmonic, as shown in figure 12. Generally this works well for all cases; figure 12 is typical. But again we note that such a reconstruction works least well for the third harmonic in each case.

6. Sloping bed versus flat bed

It is worth noting that the water depths for the sloping and flat bed tests were same at the centre of the cylinder on which the force measurements were measured rather than at the wave paddle. The water depths at the wave paddle for the sloping

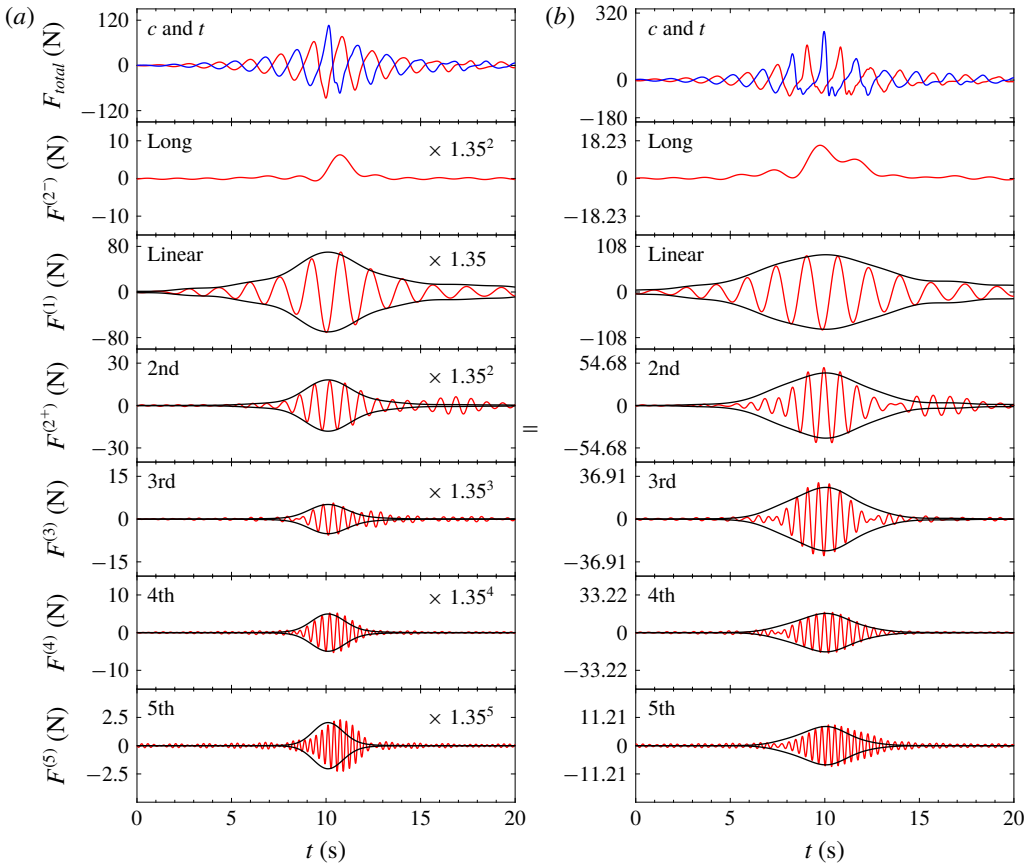


FIGURE 10. (Colour online) The harmonic structures of horizontal wave loading on the cylinder and the envelopes for bidirectional focused wave groups propagating in a flat bed. The peak frequency $f_p = 0.61$ Hz. (a) Bidirectional case with each component corresponding to the case shown in figure 9(a) with $A_f = 0.094$ m ($k_f A_f = 0.19$), (b) bidirectional case with each component corresponding to the case shown in figure 9(b) with $A_f = 0.126$ m ($k_f A_f = 0.248$).

and flat bed tests were 0.8 m and 0.505 m, respectively. It is important to investigate the variation of the wave loading with the local wave steepness at the centre of the cylinder, which is also the intended focal point for the incident wave groups. The measured free-surface time series from wave gauge WG9 for cases without the cylinder in place are used to obtain the peak of the linear envelope. The wavenumber at the centre of the cylinder is calculated with the local water depth $d = 0.505$ m, as discussed in § 2. The resulting wave steepness at the centre of the cylinder $k_f A_f$ are shown in table 1.

Figure 13 shows the variation of the total peak wave loading on the cylinder with the wave steepness $k_f A_f$ at the focal point for both the sloping and flat bed cases. It can be seen that the total peak force on the cylinder increases with the wave steepness at the focal point for both sloping and flat bed cases, and the focused wave groups with smaller wave peak spectral frequency and longer wavelength lead to larger wave loading on the cylinder for both sloping and flat bed cases. There are only three to five points (symbols) per line in figure 13, but the trends appear robust. Remarkably

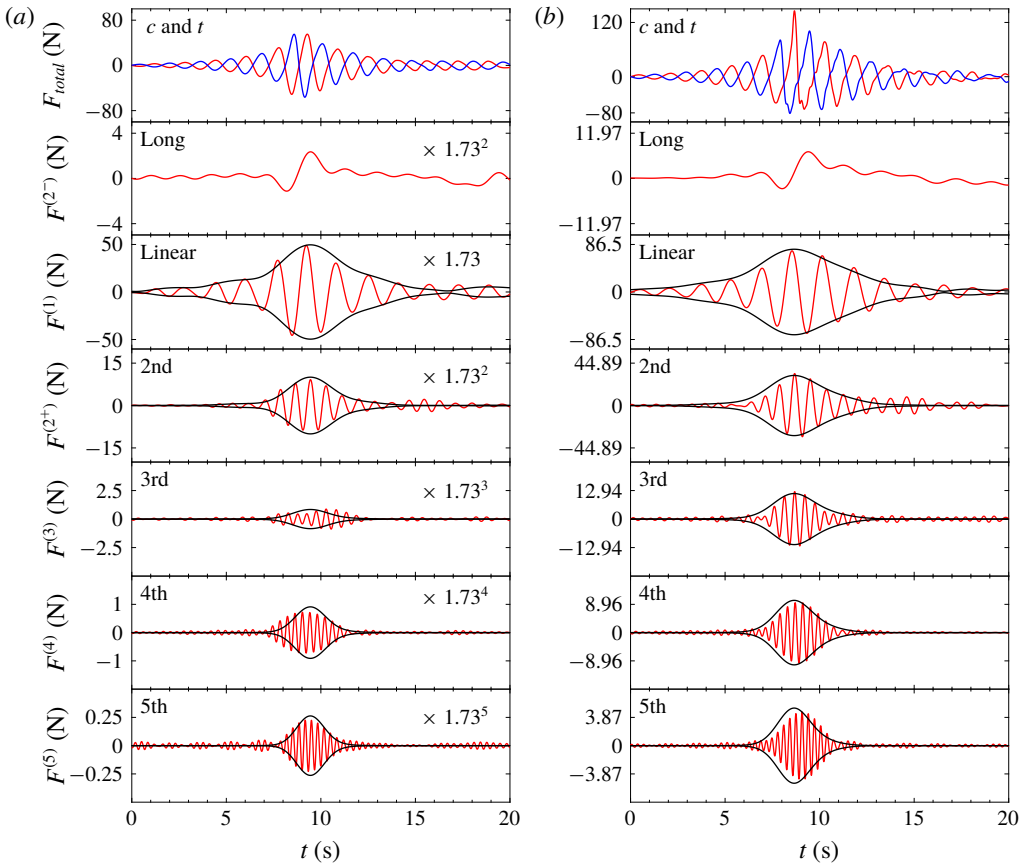


FIGURE 11. (Colour online) The harmonic structures of horizontal wave loading on the cylinder and the envelopes for both focused wave groups with $A_f = 0.064$ m and 0.102 m propagating up a sloping bed. The peak frequency $f_p = 0.61$ Hz. (a) Unidirectional: $A_f = 0.064$ m ($k_f A_f = 0.125$), (b) unidirectional: $A_f = 0.102$ m ($k_f A_f = 0.201$).

the results for the sloping bed and flat bed tests now agree well, which indicates that the wave loading on the cylinder depends strongly on the local water depth at the cylinder and not significantly on the local bed slope. The slight discrepancy for the longest waves with $f_p = 0.49$ Hz probably occurs because the focusing is being affected by nonlinearity differently for the two bed geometries. It should be noted that the independence of bed slope is demonstrated for the 1-in-20 slope. Many sites where offshore wind turbines are located have bed slopes smaller than this.

The relative contributions of the higher-order harmonics up to fourth order are investigated in figure 14. A log-scale is used on the vertical axis to show the low level of third- and fourth-order harmonic forces. It can be seen that the linear force component always dominates the higher-order harmonic forces, although its relative value decreases with the increasing wave steepness. The higher-order harmonic forces increase with the increasing wave steepness and are of significant size when the amplitude A_f is increased up to the radius of the cylinder $R (= 0.125$ m), i.e. $k_f A_f \sim k_f R$. The linear force component on the cylinder can be less than half of the total force, as seen in figure 14(a). It is clear that conventional linear or even second-order diffraction analysis for an extreme case could lead to a significant

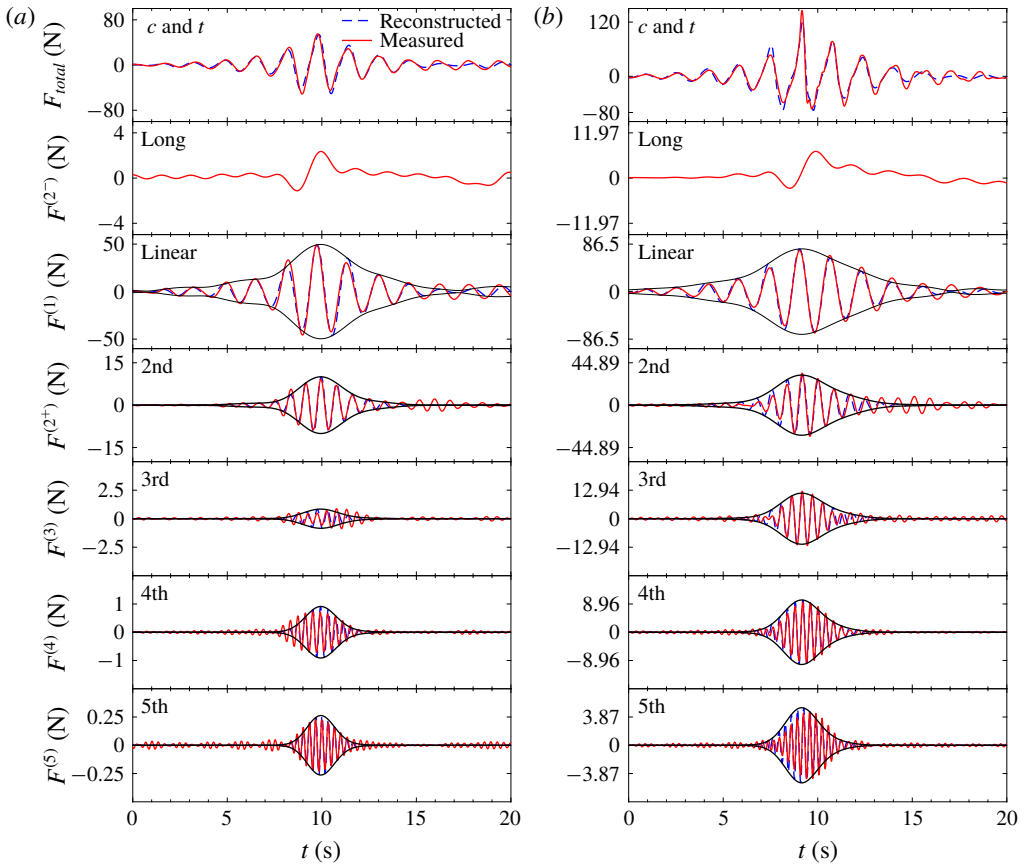


FIGURE 12. (Colour online) The reconstruction of horizontal wave loading on the cylinder for both focused wave groups shown in figure 11, the peak frequency $f_p = 0.61$ Hz. (a) For focused wave groups shown in figure 11(a) with $A_f = 0.064$ m ($k_f A_f = 0.125$), (b) for focused wave groups shown in figure 11(b) with $A_f = 0.102$ m ($k_f A_f = 0.201$).

underestimation in the total wave loading. Additionally, it can be demonstrated that the contributions of the higher-order harmonic forces decrease with the increasing cylinder size $k_f R$ for a fixed wave steepness. From figure 14(a), the maximum contributions of the nonlinear wave force components higher than the linear component are approximately 60%, 50%, 30% and 10% of the total force for $k_f R = 0.188$, 0.246, 0.373 and 0.753, respectively. As might be anticipated, the reasonably good agreement between the results of sloping and flat bed tests confirms that the relative contribution of the various harmonics to the total force is only related to the wave parameters measured at the centre of the cylinder rather than at the wave paddle, i.e. by analogy, locally rather than further offshore in deeper water.

7. The Huseby and Grue scalings for force components

7.1. Harmonic structure of forces

Using the scaling introduced by Huseby & Grue (2000), the amplitude of the n th-harmonic force is now non-dimensionalized by dividing by $\rho g A_f^n R^{(3-n)}$, where A_f is the maximum value of the linearized wave elevation envelope at the position

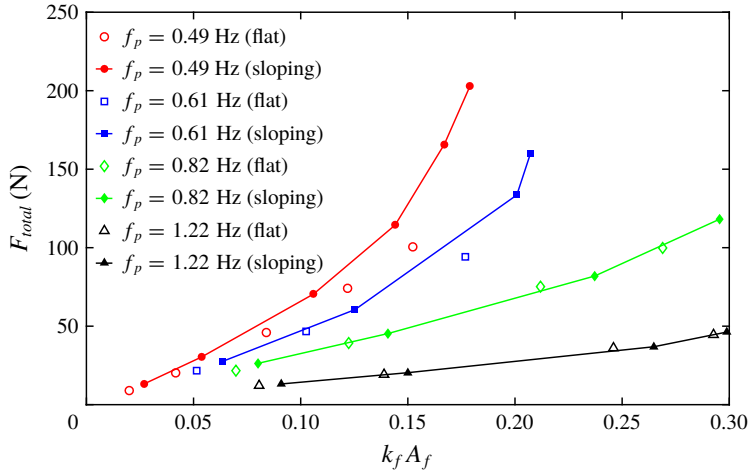


FIGURE 13. (Colour online) Variation of the total peak wave loading on the cylinder with the wave steepness $k_f A_f$. Filled symbols represent the results for the sloping bed cases and open symbols represent the results for the flat bed cases.

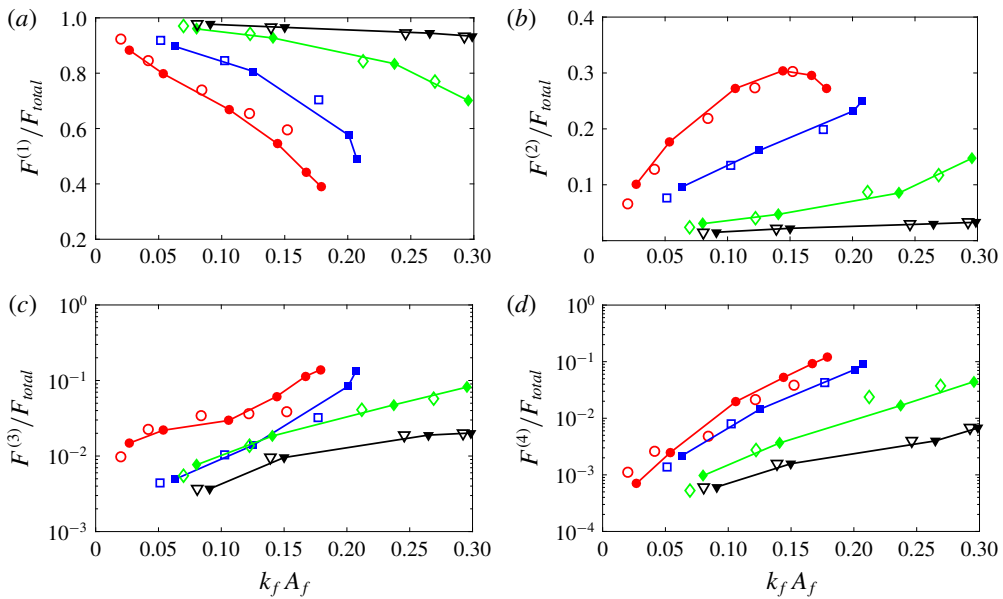


FIGURE 14. (Colour online) Variation of extracted harmonics with the wave steepness $k_f A_f$. (a) Linear force component, (b) second-harmonic forces, (c) third-harmonic forces, (d) fourth-harmonic forces. Solid symbols with solid lines for sloping bed and open symbols for flat bed. Circular red markers: $k_f R = 0.188$; square blue markers: $k_f R = 0.246$; diamond green markers: $k_f R = 0.373$; triangular black markers: $k_f R = 0.753$.

of the cylinder. Figure 15 shows the results for the linear force component for wave steepness up to 0.3. The results for both the sloping and flat bed cases are included. The inertia term in the Morison equation is applied to obtain an estimation of the

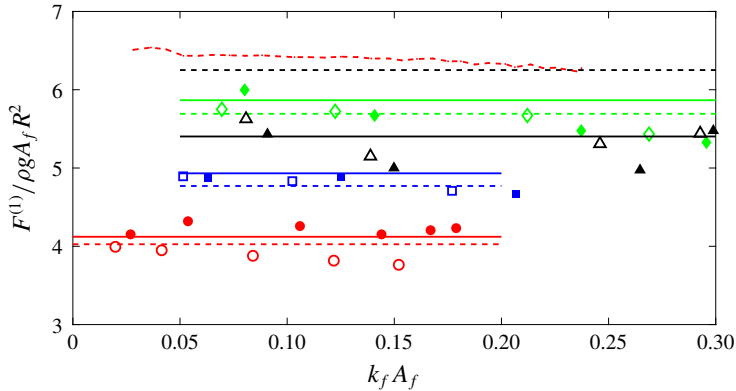


FIGURE 15. (Colour online) Variation of the linear force component with wave steepness $k_f A_f$. The linear force component is made non-dimensional using $\rho g A_f R^2$. Solid lines from DIFFRACT, dashed lines from Morison inertia forces. Dot-dashed line from experiments by Huseby & Grue (2000) with $k_f R = 0.245$. Solid symbols for sloping bed and open symbols for flat bed. Circular red markers: $k_f R = 0.188$; square blue markers: $k_f R = 0.246$; Diamond green markers: $k_f R = 0.373$; triangular black markers: $k_f R = 0.753$.

linear force component. In the present experiments $0.3 < KC < 3$ for the unidirectional focused wave, and the ratio Re/KC is larger than 31 000, for the large waves, where KC and Re are the Keulegan Carpenter and Reynolds numbers, respectively. Sarpkaya (1986, figure 3) and Huseby & Grue (2000) show that the viscous drag force on a circular cylinder is relatively small for these values of KC and Re . The inertia coefficient expected for most of these tests is 2, which is the standard value for uniform flow normal to the cylinder axis. The Morison term hereafter implies the inertia contribution from the Morison equation, unless otherwise stated. A frequency domain potential-flow solver DIFFRACT has also been applied to obtain first- and second-order harmonic wave loading on the cylinder that is located on the flat seabed (Eatock Taylor & Chau 1992; Zang *et al.* 2006).

It can be seen that for all four cylinder sizes investigated, the non-dimensional linear force component is approximately constant for the whole range of wave steepnesses, even when the wave steepness $k_f A_f$ become quite large. Our measurements agree well with the Morison linear inertia force and the potential-flow solutions from DIFFRACT. For the largest cylinder ($k_f R = 0.753$), the result is beyond the expected range of validity of the Morison equation. A similar observation has been made by Huseby & Grue (2000) in their experiments, in which the incoming waves were Stokes waves with wave slope up to 0.24, and the maximum non-dimensional cylinder size was 0.378. In Huseby & Grue (2000) deep water waves were considered; thus, the effect of water depth is limited.

Similar analysis has been done for the double-frequency (second-order) harmonic force, and the results are shown in figure 16. It is clear that, when expressed in the manner proposed by Huseby & Grue (2000), the non-dimensional second-order harmonic force is approximately constant across the entire variation of the wave steepness at the focal point, and decreases with increasing cylinder size $k_f R$, i.e. with increasing wavenumber (decreasing wavelength) because the radius of the cylinder was kept fixed in all the experiments. The focused wave groups in sloping bed cases are close to breaking for $k_f A_f > 0.2$, so the idea of a smoothly varying envelope is

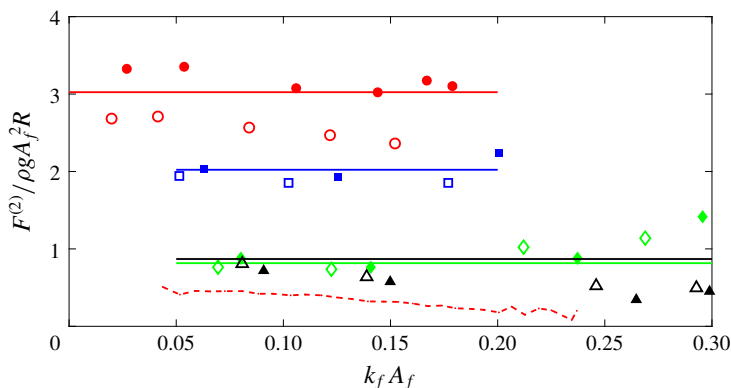


FIGURE 16. (Colour online) Variation of second-order harmonic forces with wave steepness $k_f A_f$. The second-order harmonic forces are made non-dimensional using $\rho g A_f^2 R$. Solid lines from DIFFRACT. Dot-dashed line from experiments by Huseby & Grue (2000) with $k_f R = 0.245$. Solid symbols for sloping bed and open symbols for the flat bed. Circular red markers: $k_f R = 0.188$; square blue markers: $k_f R = 0.246$; diamond green markers: $k_f R = 0.373$; triangular black markers: $k_f R = 0.753$.

somewhat suspect; hence the structure of the cylinder forces may be rather different. This may explain the relatively large increases for $k_f A_f > 0.2$ at $k_f R = 0.246$ and 0.373 . In Huseby & Grue (2000) a similar observation was made, though the second-order harmonic force decreases with the wavenumber slightly (dot-dashed line in figure 16). These trends in the first- and second-order harmonic forces are applicable to both the sloping and flat bed tests, and the effect of the bed slope appears small. The magnitudes of the second-order force harmonic in this study are larger than those in Huseby & Grue (2000) due to the larger nonlinearity for shallow water waves.

The phase of the second-order harmonic force relative to the linear force component is shown in figure 17. It can be seen that for all but the largest cylinder ($k_f R = 0.753$), the phases of the second-order harmonic force are quite constant as the wave steepness increases up to 0.2, and then decrease with further increase in wave steepness. Huseby & Grue (2000) also found in their experiments that the phases of second-order harmonic force are approximately constant when the wave steepness is smaller than ~ 0.2 , though the phase of the n th-order harmonic force was defined as the phase difference relative to the incoming waves rather than the linear force component. An opposing trend is observed for the largest cylinder ($k_f R = 0.753$). The phases increase with the wave steepness after 0.2. The NewWave envelope for the steeper waves from a higher-frequency wave group ($f_p = 1.22$ Hz, $k_f A_f = 0.247$) is no longer symmetric due to third-order wave-wave interactions and strong nonlinearity (Adcock & Taylor 2009). The envelope has a very steep rise and a slow decay, as shown in figure 18. This might lead to different behaviour of the wave groups with higher frequency and larger wave steepness. But again, there is good agreement between the sloping and flat bed results.

Variation of non-dimensional first- and second-order force harmonics with the cylinder size $k_f R$ are also shown in figure 19. The experimental data is compared to the Morison compact linear inertia term as well as the classical diffraction and the MacCamy–Fuchs solutions (MacCamy & Fuchs 1954). The experimental data in figure 19 are shown by the mean values across wave steepness from figure 15

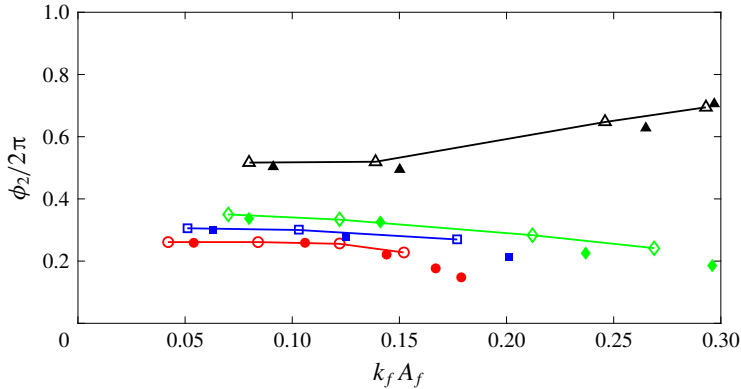


FIGURE 17. (Colour online) Variation of phase of second-order force harmonics with wave steepness $k_f A_f$. Solid symbols with solid line for sloping bed and open symbols for the flat bed. Circular red markers: $k_f R = 0.188$; square blue markers: $k_f R = 0.246$; diamond green markers: $k_f R = 0.373$; triangular black markers: $k_f R = 0.753$.

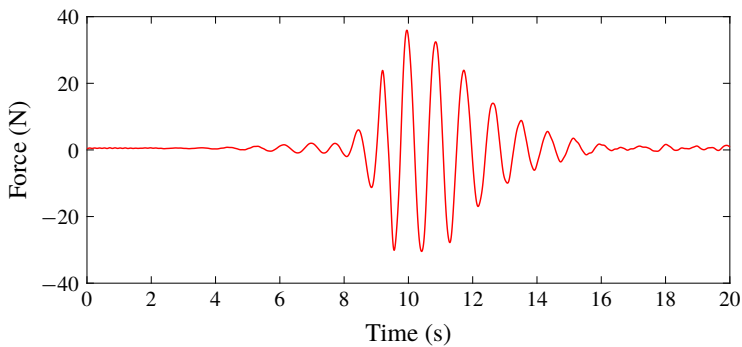


FIGURE 18. (Colour online) Force–time history for the wave group with $A_f = 0.041$ m propagating in a flat bed. The peak frequency $f_p = 1.22$ Hz. $k_f A_f = 0.246$.

and figure 16, using the same symbols to indicate both cylinder size ($k_f R$) and bed geometry, flat or sloping. The error bars on the left-hand side of the each symbol represents the variability of the harmonic force for flat bed tests and those on the right-hand side are for sloping bed tests. Generally, the non-dimensional linear force component increases with increasing cylinder size up to a certain point and then decreases with further increasing cylinder size. The Morison term predicts the linear force quite well for a smaller cylinder size ($k_f R \sim (0-0.4)$) while failing to give a good approximation for larger cylinders. The numerical classical diffraction results and the MacCamy–Fuchs equation match and give good estimations of the first-harmonic forces for all four cylinder sizes considered. It also can be seen that the non-dimensional second-order harmonic force rapidly decreases with increasing cylinder size to a minimum at a non-dimensional size of ~ 0.5 , and that the size of the second-order term is the same for a cylinder twice as large ($k_f R = 0.753$) due to strong diffraction effects. Good agreement is achieved between the experimental data and the second-order diffraction solutions, indicating that classical diffraction theory is applicable for the wave and loading conditions investigated in this work.

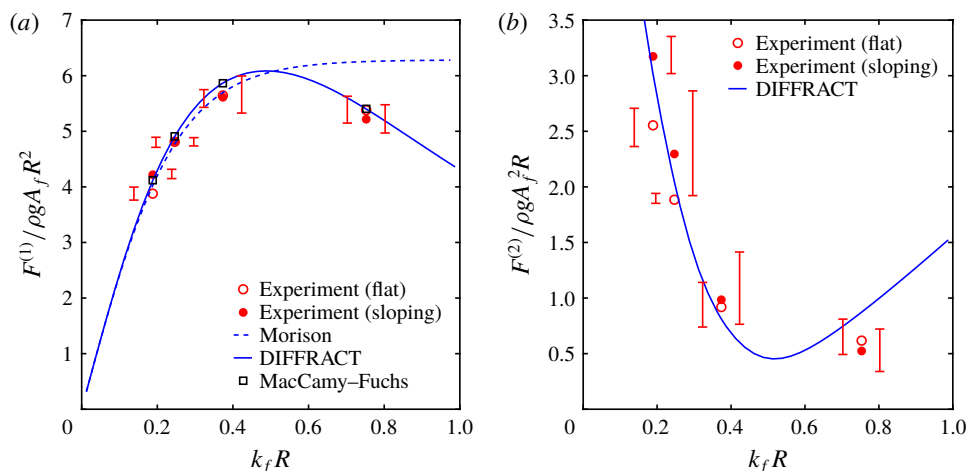


FIGURE 19. (Colour online) Variation of non-dimensional first- and second-order force harmonics with the cylinder size $k_f R$. (a) First-order force harmonic; (b) second-order force harmonic.

The results for the third-, fourth- and fifth-order harmonic forces are shown in figures 20–22, respectively. The experimental results of Huseby & Grue (2000) are also included for comparison. We note that the magnitudes of the third- and higher-order harmonic forces are small, below the noise level, for smaller wave steepness for all four cylinder sizes. For example, the third- and fourth-order harmonic forces are smaller than 5% and 1% of the total forces when $k_f A_f < 0.1$, as shown in figure 14(c,d). And recalling that steeper waves with higher wave frequency ($k_f R = 0.753$) are susceptible to nonlinear effects, it is reasonable to have some experimental scatter in the results shown in figures 20–22. Kristiansen & Faltinsen (2017) observed a distinct run-up at the rear of the cylinder above a limiting wave steepness of approximately $H/\lambda = 1/40$ ($kA = 0.08$) in finite water depth. They speculated that this run-up results from a viscous flow separation using an ideal section-wise two-dimensional CFD model. This may also explain the slightly different trend/scatter in higher harmonics at larger wave steepness in this study. Additionally, if the error in the measured wave elevation is e , which is approximately 2% typically, then relative error of ne would be introduced in the amplitude of the non-dimensional n th-order harmonic force based on the current scaling analysis (Huseby & Grue 2000). Given the increasing error and the small size of the higher force harmonics, the agreement between the sloping and flat bed tests is still reasonable, as shown in figures 20–22. After allowing for the inherent variability, it is also clear that the higher force harmonics still show Stokes-like scaling, with no systematic variation with wave steepness beyond this.

The measurements of the third-order harmonic forces are also compared to the FNV model developed by Faltinsen *et al.* (1995) in figure 20. It can be seen that the FNV solutions and the experimental results from Huseby & Grue (2000) agree well with our measurements for smaller cylinder size ($k_f R \sim (0.2-0.4)$). Both our measurements and the measurements of Huseby & Grue (2000) show that the third-order harmonic force coefficient is nearly constant as the wave steepness is increased. The FNV model overestimates the amplitude of the third-order harmonic force for larger cylinders ($k_f R = 0.753$, black triangle in the figure). The smallest cylinder results (red circle

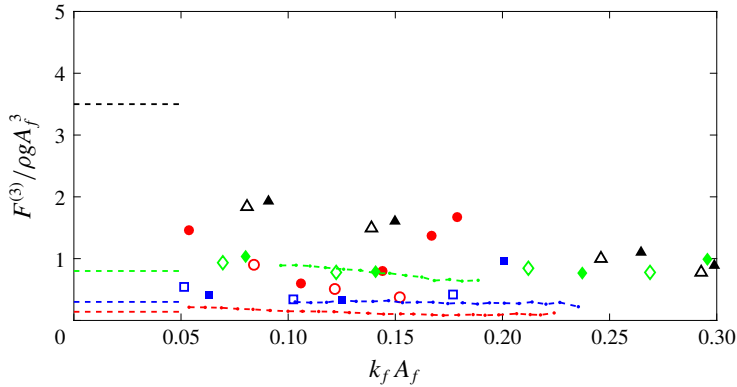


FIGURE 20. (Colour online) Variation of third-order harmonic forces with wave steepness $k_f A_f$. The third-order harmonic forces are made non-dimensional using $\rho g A_f^3$. Dot-dashed line from experiments by Huseby & Grue (2000), blue for $k_f R = 0.245$, green for 0.378; dashed line is the FNV solution, bottom to top: $k_f R = 0.188, 0.246, 0.373$ and 0.753. Solid symbols for sloping bed and open symbols for flat bed. Circular red markers: $k_f R = 0.188$; square blue markers: $k_f R = 0.246$; diamond green markers: $k_f R = 0.373$; triangle black markers: $k_f R = 0.753$.

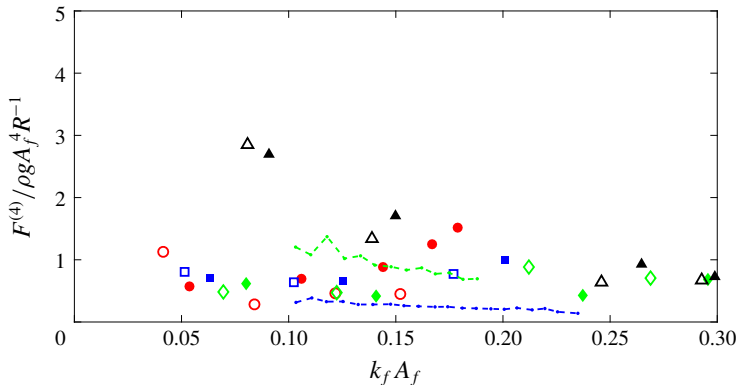


FIGURE 21. (Colour online) Variation of fourth-order harmonic forces with wave steepness $k_f A_f$. The fourth-order harmonic forces are made non-dimensional using $\rho g A_f^4 R^{-1}$. Dot-dashed line from experiments by Huseby & Grue (2000), blue for $k_f R = 0.245$, green for 0.378. Solid symbols for sloping bed and open symbols for flat bed. Circular red markers: $k_f R = 0.188$; square blue markers: $k_f R = 0.246$; diamond green markers: $k_f R = 0.373$; triangle black markers: $k_f R = 0.753$.

in the figure) apparently vary strongly with wave steepness, and the FNV prediction is considerably smaller as the cylinder is in very shallow water ($k_f d_f = 0.763$). It is interesting to see that both our measurements and the results from Huseby & Grue (2000) give a decreasing amplitude of the third-order harmonic force with increasing wave steepness up to 0.15 for the longest waves ($k_f R = 0.188$, red circle in the figure and figure 21 in Huseby & Grue (2000)). An increase in the third-order harmonic force for the sloping bed tests is observed for $k_f A > 0.2$, which may result from the observed run-up at the rear of the cylinder in finite water depth, as mentioned in

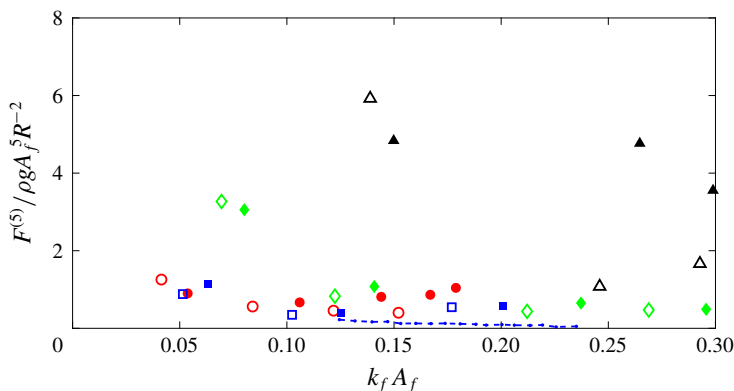


FIGURE 22. (Colour online) Variation of fifth-order harmonic forces with wave steepness $k_f A_f$. The fifth-order harmonic forces are made non-dimensional using $\rho g A_f^5 R^{-2}$. Dot-dashed line from experiments by Huseby & Grue (2000) with $k_f R = 0.245$. Solid symbols for sloping bed and open symbols for flat bed. Circular red markers: $k_f R = 0.188$; square blue markers: $k_f R = 0.246$; diamond green markers: $k_f R = 0.373$; triangle black markers: $k_f R = 0.753$.

Kristiansen & Faltinsen (2017). For the most slender cylinder cases ($k_f R = 0.188$), these correspond to rather shallow water waves ($k_f d_f = 0.76$). Here, we have some difficulty in achieving good time alignment for crest and trough focused cases. This is probably because the propagation speeds of large crests and troughs are slightly different (due to triad wave-wave interactions), so estimation of the coefficients of higher harmonics becomes more difficult.

It can be seen from figures 21–22 that the fourth- and fifth-order harmonic force coefficients for the wave conditions investigated in this work roughly collapse on constant values of ~ 0.67 and ~ 0.70 , respectively, regardless the wave steepness and cylinder size. The large diameter cylinder results for $k_f R = 0.753$ are mostly larger and fit our analysis less well. This is different from what has been observed by Huseby & Grue (2000), where the amplitude of the fourth-order harmonic force coefficient increases with the cylinder size $k_f R$. Larger nonlinearity of shallow water waves in this study results in larger magnitudes of the fifth-order force harmonic when compared with Huseby & Grue (2000).

The phases of the third-, fourth- and fifth-order harmonic forces are shown in figures 23–25, respectively. As expected, there is a reasonable match between the results of flat and sloping bed tests. As with the amplitude coefficients, the phases of the third-, fourth- and fifth-order harmonic forces, to a rough approximation, are constant for the whole range of wave steepness considered in this study.

The averaged coefficients across all experimental wave steepness above $kA \sim 0.05$ are summarized in the Appendix. These are obtained from figures 15–25. Generally, the results for smallest ($k_f R = 0.188$) and largest cylinders ($k_f R = 0.753$) fit our analysis less well. The water depth for the smallest cylinder ($k_f R = 0.188$) is very shallow ($k_f d_f = 0.763$) and the cylinder with $k_f R = 0.753$ is too large, thus it is not a slender cylinder.

7.2. General reconstruction of forces

We aim to reconstruct the total force time history in terms of the linear component, an amplitude coefficient and phase for each harmonic (3.5). Now we use values for

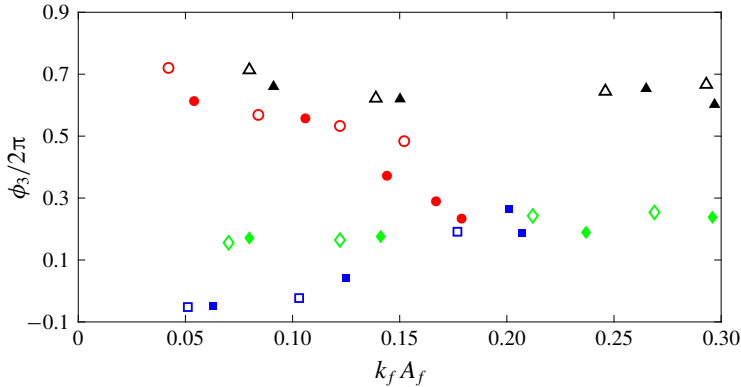


FIGURE 23. (Colour online) Variation of the phases of the third-order harmonic forces with wave steepness $k_f A_f$. Solid symbols for sloping bed and open symbols for flat bed. Circular red markers: $k_f R = 0.188$; square blue markers: $k_f R = 0.246$; diamond green markers: $k_f R = 0.373$; triangle black markers: $k_f R = 0.753$.

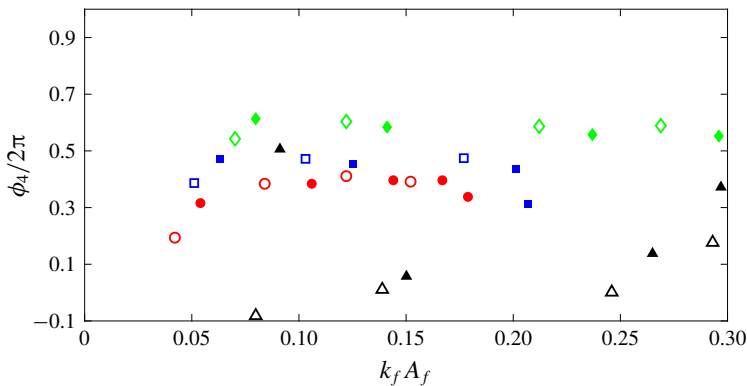


FIGURE 24. (Colour online) Variation of the phases of the fourth-order harmonic forces with wave steepness $k_f A_f$. Solid symbols for sloping bed and open symbols for flat bed. Circular red markers: $k_f R = 0.188$; square blue markers: $k_f R = 0.246$; diamond green markers: $k_f R = 0.373$; triangle black markers: $k_f R = 0.753$.

the averaged coefficients in table 2 in the Appendix. As an example we take cases with $f_p = 0.82$ Hz ($k_f R = 0.373/k_f d_f = 1.51$) for both sloping and flat bed tests. It can be seen from the figures and the table that $S_{FE1} = 5.617$, $S_{FE2} = 0.95$, $S_{FE3} = 0.87$, $S_{FE4} = 0.67$ and $S_{FE5} = 0.70$, respectively, for all the $k_f A_f$ considered in this paper. In terms of phase angles, $\phi_2 = 103^\circ$ (1.80 rad), $\phi_3 = 76^\circ$ (1.33 rad), $\phi_4 = 208^\circ$ (3.63 rad) and $\phi_5 = 250^\circ$ (4.36 rad). Figure 26 shows the force reconstruction results for flat bed cases, with $A_f = 0.041$ and $A_f = 0.075$ ($k_f A_f = 0.122$ and $k_f A_f = 0.224$). Similar results for sloping bed cases are shown in figure 27. Note that the envelopes of the measured linear component are used for the reconstruction. It can be seen from the figures that the reconstructed harmonics match as well as those shown in figure 12 for the extracted harmonics, confirming that the proposed reconstruction method is robust and the harmonic structure of the wave loading on the cylinder is independent of bed slope and wave steepness if the Huseby and Grue's scaling for force is applied. It

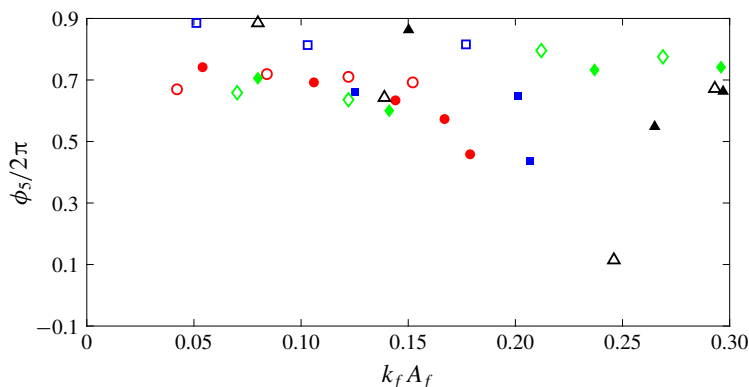


FIGURE 25. (Colour online) Variation of the phases of the fifth-order harmonic forces with wave steepness $k_f A_f$. Solid symbols for sloping bed tests and open symbols for flat bed cases. Circular red markers: $k_f R = 0.188$; square blue markers: $k_f R = 0.246$; diamond green markers: $k_f R = 0.373$; triangle black markers: $k_f R = 0.753$.

can be seen that the fifth harmonic is out of position by 1 s for the smaller wave steepness on both flat and sloping beds; we have no explanation for this.

This reconstruction method could be applied for practical engineering analysis as the linear component can be accurately approximated by either the Morison equation or classical linear diffraction theory very simply.

8. The harmonic structure of the hydrodynamic force as a function of a linear force component

In § 7, we demonstrated that the linear and second-order sum contributions to force can be well approximated using the linear input wave elevation time history in the undisturbed field at the position of the loaded column. Now, we go one stage further and create a nonlinear harmonic force model based only on the linear force time history. We find that this works as well as the η -based reconstructions for the force harmonics. It shows the same localization of harmonics in time and the same type of amplitude scaling as the η -based model. But it requires only force information rather than force and elevation. We define a Huseby and Grue scaling for the force harmonic in terms of the linear force equivalent to this one in terms of wave amplitude.

Another check on the Stokes-like amplitude scaling is carried out based on a modified Huseby and Grue scaling, but now without reference to the input wave amplitude. The results equivalent to figure 13 are shown in figure 28. The amplitude of the envelope of the n th harmonic force is non-dimensionalized dividing by $(\rho g R^3)^{(1-n)} \mathcal{F}_1^n$. \mathcal{F}_1 is the peak of the envelope of the linear force component. It can be seen from figures that the Stokes scaling applies quite well in these cases, with close matching in wave shapes and sizes of each harmonic. Again, the slight difference in the third-order harmonic force is observed.

9. Conclusions

A series of experiments have been carried out in this study to investigate the nonlinear forces on a model of an offshore wind turbine foundation, represented by a bottom-mounted vertical piercing cylinder, for a range of wave conditions.

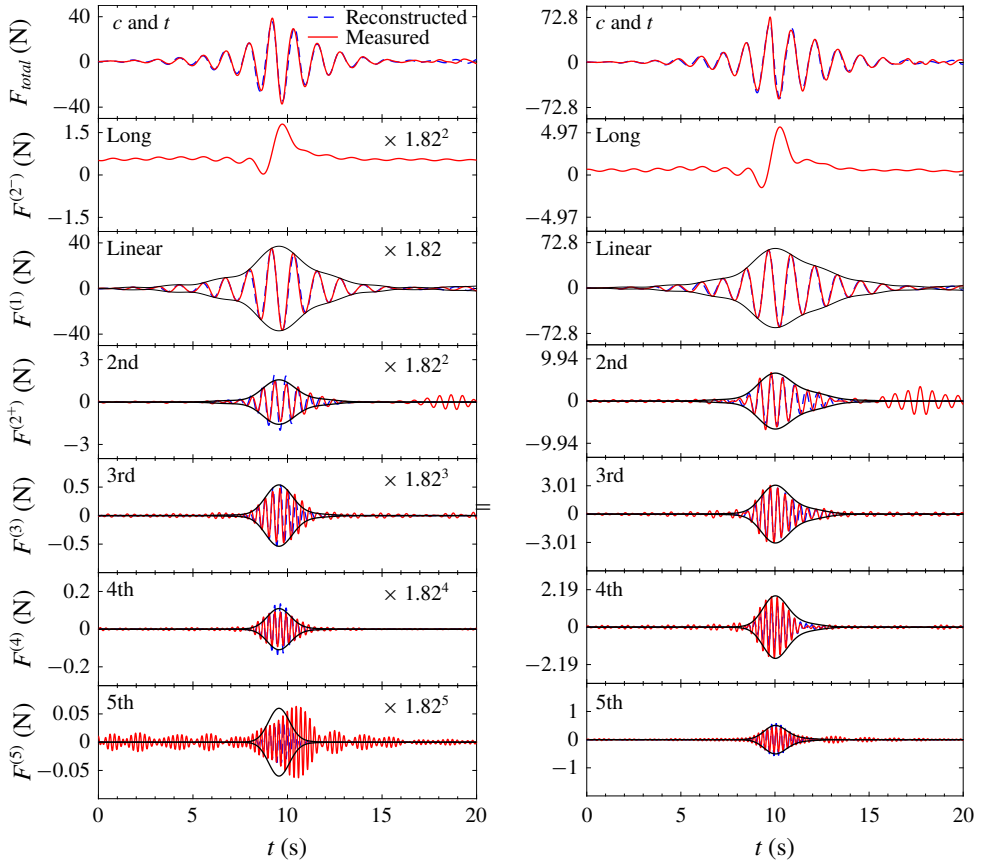


FIGURE 26. (Colour online) The reconstruction of horizontal wave loading on the cylinder and the envelopes for both focused wave groups with $A_f = 0.041$ m and 0.075 m propagating in a flat bed using the force coefficients and phase angles shown in figures 14–22. The peak frequency $f_p = 0.82$ Hz. (a) $A_f = 0.041$ m, $k_f A_f = 0.122$, (b) $A_f = 0.075$ m, $k_f A_f = 0.224$.

Focused wave groups consistent with a JONSWAP spectral form (with a peak spectral frequency of f_p) were applied to model a localized large wave in the laboratory. The use of wave groups overcomes the shortcomings of regular waves, which lack proper representation of the broadband spectrum of real ocean waves. Their implementation in the laboratory testing is efficient, with both the amplitude and phase of the spectral components being carefully controlled. Nonlinearity in the incident waves and in the wave–structure interactions generates higher harmonic forces at frequencies that are approximately integer multiples of the input spectral peak frequencies f_p . These high-frequency wave-induced loads could be significant enough to cause ‘ringing’, which is a transient violent dynamic response of the structure due to resonant excitation in the lightly damped system. Thus, this study has concentrated on the extraction of the complete harmonic structure of the wave loads rather than on the ‘ringing’ response of the structure itself.

Tests for crest focused wave groups and the same wave group inverted were carried out in pairs in order to apply the ‘phase-inversion’ method to decompose the total

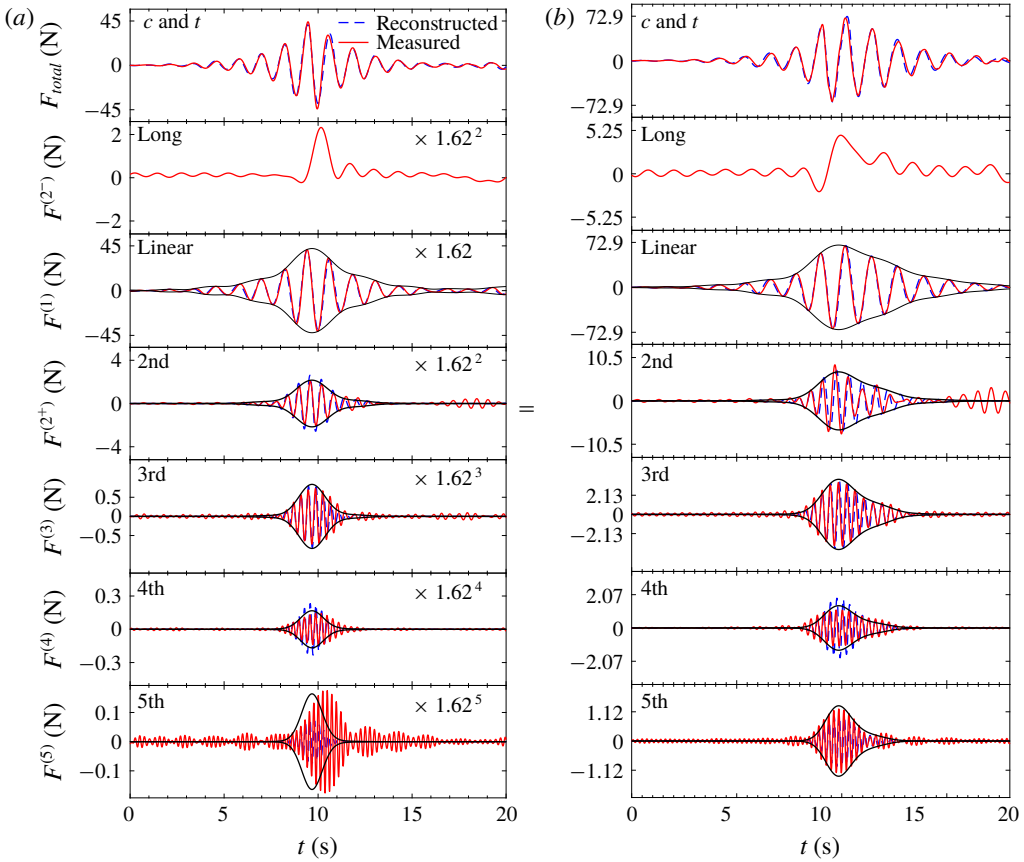


FIGURE 27. (Colour online) The reconstruction of horizontal wave loading on the cylinder and the envelopes for both focused wave groups with $A_f = 0.049$ m and 0.079 m propagating in a sloping bed using the force coefficients and phase angles shown in figures 14–22. The peak frequency $f_p = 0.82$ Hz. (a) $A_f = 0.049$ m, $k_f A_f = 0.146$, (b) $A_f = 0.079$ m, $k_f A_f = 0.237$.

hydrodynamic force into its fundamental harmonics. The total hydrodynamic force is separated into odd and even harmonics by linear combinations of resultant force time histories for the crest and trough signals. To ensure that the odd and even harmonics are completely separated, the crest and trough signals have to be aligned in time. The cross-correlation between the signals is used to obtain the optimal alignment and hence the minimum ‘leakage’ from the odd harmonics into assumed even spectra components and vice versa. The complete harmonic structure can then be obtained by digital band-pass filtering. In this study, a band-pass filter with a range of f_p centred about nf_p is applied. A Hilbert transform is applied here to obtain the envelope of the linear components.

Remarkably, even for violent nearly breaking waves such as bidirectional crossing wave pairs, the ‘phase-inversion’ method is found to work well. The extracted harmonic structure of the extreme load is still apparent and consistent with that for smaller non-breaking waves. It is also found that the n th-harmonic force scales with the n th power of the envelope of both the linear undisturbed free-surface elevation and the linear force component in both time variation and amplitude. This

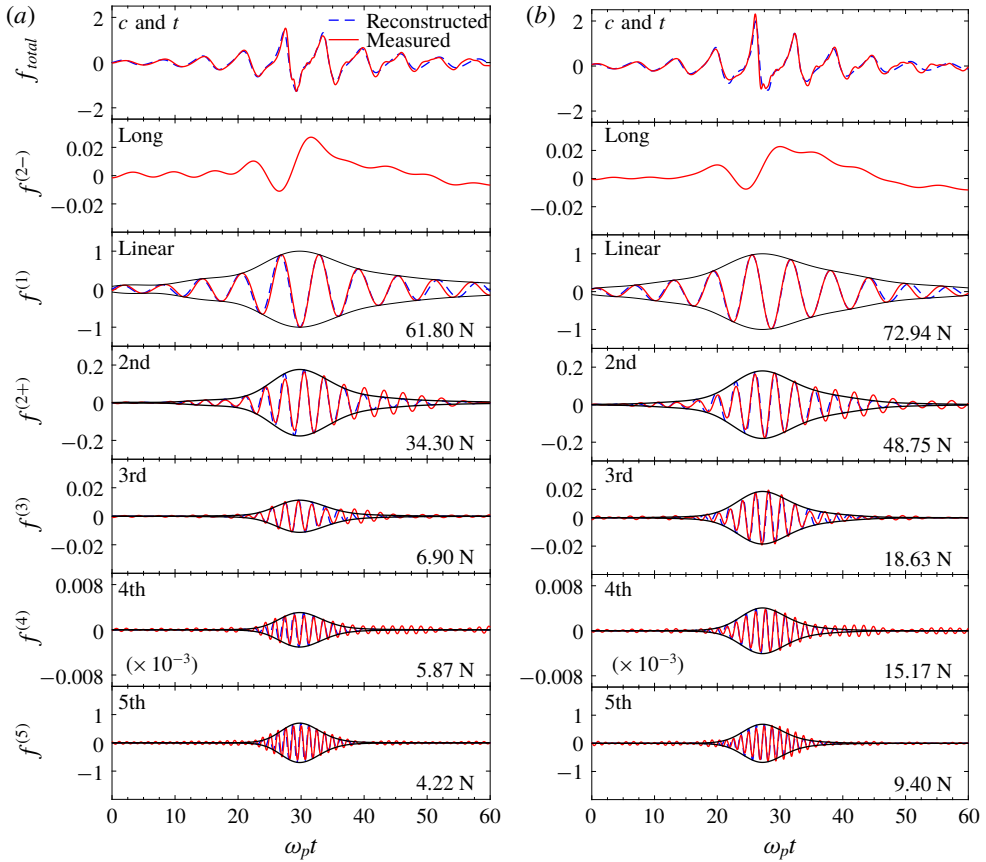


FIGURE 28. (Colour online) The harmonic structures of horizontal wave loading on the cylinder and the envelopes for both focused wave groups with $A_f = 0.096$ m and 0.111 m propagating in a sloping bed. The peak frequency $f_p = 0.49$ Hz. (a) $A_f = 0.096$ m ($k_f A_f = 0.144$); (b) $A_f = 0.111$ m ($k_f A_f = 0.167$).

allows estimation of the higher-order harmonic shapes from knowledge of the linear component alone, and those approximated envelopes can then be used to predict the envelopes at each harmonic for an incident wave group with the same peak spectral frequency and an arbitrary amplitude. Moreover, the actual time history at a higher-order harmonic can be reconstructed to a reasonable approximation from the linear component time history, using an amplitude coefficient and a phase angle at each harmonic. Either the linear surface elevation time history in the undisturbed field at the position of the loaded column or the linear force time history can be used. This work is a generalization of the Stokes-wave perturbation expansion to cylinder loads arising from wave groups. It relies on phase decomposition (here, inverting the paddle signal), so the methodology is not directly applicable to the analysis of loads produced by random wave fields, either in the open sea or in random tank tests.

In addition to the tests over a flat bed, tests were also performed with a sloping 1-in-20 bed. Comparisons between these indicate that the harmonic wave loading on the cylinder depends only on the wave properties of the local water depth at the centre of the cylinder and not on the relatively mild slope, and hence not directly

on the wave properties at the paddle. Further investigation on the effect of wave nonlinearity on the wave loading shows that the total hydrodynamic force increases with increasing wave steepness and decreasing cylinder size. It is also found that the relative contribution from the fundamental force decreases with increasing wave steepness measured at the centre of the cylinder, while the contributions from the higher-order harmonics increase. For certain wave cases, linear loading is less than 40% of the total wave loading, with higher-order harmonics contributing more than 60%. This demonstrates the importance of the higher-order nonlinear wave loading on marine structures and the need to consider nonlinear high-order components in the design of such structures.

At the second order and above the harmonic structure is shown to be closely related to the appropriate power of the linear input group. The n th-harmonic force is non-dimensionalized using the Huseby & Grue (2000) scaling, dividing by $\rho g A_f^n R^{(3-n)}$, which works very well. The linear and the second-order non-dimensional force components are shown to be in excellent agreement with classical diffraction theory based on coefficients evaluated at a frequency corresponding to the peak energy density in the incoming wave. Experimentally, the third-order coefficients are observed to be close to independent of wave steepness but affected by the size of the cylinder, other than for the longest wave conditions (equivalent to the most slender cylinder) where for small wave steepness ($k_f A_f < 0.15$) there seems to be a downward trend with wave steepness, in agreement with the observations of Huseby & Grue (2000) at comparable wave steepness and cylinder size but for deeper waters. The force structure is close to identical in the experiments for both sloping and flat bed cases. These experiments confirm as well as extend the results obtained by Huseby & Grue (2000) from their experiments on the interaction of regular waves with a vertical cylinder, where the incident wave steepness and cylinder sizes were in the similar range but the water was substantially deeper. The phases of higher-harmonic forces up to fifth order are roughly constant for all wave steepness considered. Generally, the analysis method works best for circumstances when the water depth is larger than $k_f d_f \sim 0.8$, the cylinder size is smaller than $k_f R \sim 0.5$ and the wave is non-breaking.

Acknowledgements

The first author acknowledges the financial support of the University of Bath (grant nos 3451 and 3708) for her PhD study. The project was also supported by EPSRC (project EP/J010316/1 Supergen MARine Technology challenge). We thank J. Kirkegaard and all the staff at DHI for their help and hospitality during the experiments, which have been supported by European Community's Sixth Framework Programme through the Integrated Infrastructure Initiative HYDRALAB III within the Transnational Access Activities, contract no. 022441.

Appendix. The averaged coefficients for all four cylinder sizes

The averaged coefficient values across all experimental wave steepness above $kA \sim 0.05$ obtained from figures 15–25 are summarized in table 2. A comment on the reliability of the value or range where it is approximately constant is also included. It can be seen that the analysis method applied in this study works well in general for cases with intermediate water depth and cylinder size ($k_f d_f > 0.8$ and $k_f R < 0.5$).

$k_f R$	$k_f d_f$	Colours	Order	Coefficients	Variation with wave steepness
0.188	0.760	Red	1	4.06	Constant (figure 19)
			2	2.87	Constant (figure 19)
			3	0.96	Poor fit (figure 20)
			4	0.67	Poor fit (figure 21)
			5	0.70	Nearly constant (figure 22)
0.246	0.995	Blue	1	—	—
			2	83	Slowly decreasing above $k_f A_f > 0.15$ (figure 17)
			3	175	Fast decreasing (figure 23)
			4	136	Nearly constant (figure 24)
			5	250	Nearly constant below $k_f A_f < 0.15$ (figure 25)
0.246	0.995	Blue	1	4.81	Constant (figure 19)
			2	2.09	Constant (figure 19)
			3	0.69	Constant (figure 20)
			4	0.67	Nearly constant (figure 21)
			5	0.70	Constant (figure 22)
0.246	0.995	Blue	1	—	—
			2	94	Slowly decreasing above $k_f A_f > 0.18$ (figure 17)
			3	183	Slowly increasing (figure 23)
			4	155	Nearly constant (figure 24)
			5	250	Nearly constant below $k_f A_f < 0.2$ (figure 25)

TABLE 2. For caption see next page.

0.373	1.507	Green	1	5.62	Constant (figure 19)
			2	0.95	Constant (figure 19)
			3	0.87	Constant (figure 20)
			4	0.67	Constant (figure 21)
			5	0.70	Constant above $k_f A_f > 0.1$ (figure 22)
			1	—	—
			2	103	Slowly decreasing (figure 17)
			3	76	Constant (figure 23)
			4	208	Nearly constant (figure 24)
			5	250	Nearly constant (figure 25)
			1	5.30	Constant (figure 19)
			2	1.14	Constant (figure 19)
			3	1.33	Slowly decreasing (figure 20)
			4	0.67	Slowing decreasing above $k_f A_f > 0.1$ (figure 21)
			5	0.70	Poor fit (figure 22)
0.753	3.040	Black	1	—	—
			2	211	Slowly increasing (figure 17)
			3	233	Nearly constant (figure 23)
			4	94	Poor fit (figure 24)
			5	250	Slowly decreasing (figure 25)

TABLE 2 (contd). The averaged coefficients for all four cylinder sizes.

REFERENCES

- ADCOCK, T. A. A. & TAYLOR, P. H. 2009 Estimating ocean wave directional spreading from an Eulerian surface elevation time history. *Proc. R. Soc. Lond. A* **465**, 3361–3381.
- BALDOCK, T. E., SWAN, C. & TAYLOR, P. H. 1996 A laboratory study on nonlinear surface waves on water. *Phil. Trans. R. Soc. Lond. A* **354**, 649–676.
- BOCCOTTI, P. 1983 Some new results on statistical properties of wind waves. *Appl. Ocean Res.* **5** (3), 134–140.
- BORTHWICK, A. G. L., HUNT, A. C., FENG, T., TAYLOR, P. H. & STANSBY, P. K. 2006 Flow kinematics of focused wave groups on a plane beach in the UK Coastal Research Facility. *Coast. Engng* **53**, 1033–1044.
- BREDMOSE, H. & JACOBSEN, N. G. 2011 Vertical wave impacts on offshore wind turbine inspection platforms. In *Thirtieth International Conference on Ocean, Offshore and Arctic Engineering, Ocean Space Utilization; Ocean Renewable Energy* (ed. D. Walsh, C. Sethi & J. Kosowatz), vol. 5, pp. 645–654. American Society of Mechanical Engineers.
- CHAPLIN, J. R., RAINEY, R. C. T. & YEMM, R. W. 1997 Ringing of a vertical cylinder in waves. *J. Fluid Mech.* **350**, 119–147.
- CHEN, L. F., ZANG, J., HILLIS, A. J., MORGAN, G. C. J. & PLUMMER, A. R. 2014 Numerical investigation of wave–structure interaction using OpenFOAM. *Ocean Engng* **88**, 91–109.
- EATOCK TAYLOR, R. & CHAU, F. P. 1992 Wave diffraction – some developments in linear and non-linear theory. *J. Offshore Mech. Arctic Engng* **114**, 185–194.
- FALTINSEN, O. M., NEWMAN, J. N. & VINJE, T. 1995 Nonlinear wave loads on a slender vertical cylinder. *J. Fluid Mech.* **289**, 179–198.
- FALTINSEN, O. M., NEWMAN, J. N. & VINJE, T. 1996 Numerical experiments in ringing of offshore systems under viscous loads. In *Fifteenth International Conference on Offshore and Arctic Engineering, Offshore Technology* (ed. S. K. Chakrabarti, M. T. Pontes, M. Hisaaki, J. Falzarano, P. Schofield & D. Morrison), vol. 1, p. 484. American Society of Mechanical Engineers.
- FITZGERALD, C. J., TAYLOR, P. H., EATOCK TAYLOR, R., GRICE, J. & ZANG, J. 2014 Phase manipulation and the harmonic components of ringing forces on a surface-piercing column. *Proc. R. Soc. Lond. A* **470**, 1–21.
- GRUE, J., BJØRSHOL, G. & STRAND, Ø. 1993 Higher harmonic wave exciting forces on a vertical cylinder. *Mech. Appl. Math.*, Preprint series <http://urn.nb.no/URN:NBN:no-52740>.
- GRUE, J. & HUSEBY, M. 2002 Higher-harmonic wave forces and ringing of vertical cylinders. *Appl. Ocean Res.* **24** (4), 203–214.
- GURLEY, K. & KAREEM, A. 1998 Simulation of ringing in offshore systems under viscous loads. *J. Engng Mech.* **124**, 582–586.
- HUNT, A. C., TAYLOR, P. H., BORTHWICK, A. G. L., STANSBY, P. K. & FENG, T. 2004 Kinematics of a focused wave group on a plane beach: physical modelling in the UK Coastal Research Facility. *Coast. Structure* **2003**, 740–750.
- HUSEBY, M. & GRUE, J. 2000 An experimental investigation of higher-harmonic wave forces on a vertical cylinder. *J. Fluid Mech.* **414**, 75–103.
- JONATHAN, P. & TAYLOR, P. H. 1997 On irregular, nonlinear waves in a spread sea. *J. Offshore Mech. Arct.* **119**, 37–41.
- KRISTIANSEN, T. & FALTINSEN, O. M. 2017 Higher harmonic wave loads on a vertical cylinder in finite water depth. *J. Fluid Mech.* **833**, 773–805.
- LINDGREN, G. 1970 Some properties of a normal process near a local maximum. *Ann. Math. Statist.* **40** (6), 1870–1883.
- MACCAMY, R. C. & FUCHS, R. A. 1954 Wave forces on piles: a diffraction theory. *Tech. Rep.* 69. Corps of Engineers Washington DC Beach Erosion Board.
- MALENICA, Š. & MOLIN, B. 1995 Third-harmonic wave diffraction by a vertical cylinder. *J. Fluid Mech.* **302**, 203–229.
- NATVIG, B. J. 1994 A proposed ringing analysis model or higher order tether response. In *Fourth International Conference on Offshore and Polar Engineering*, pp. 40–51. International Society of Offshore and Polar Engineers.

- NEWMAN, J. N. 1996 Non-linear scattering of long waves by a vertical cylinder. In *Waves and Non-Linear Process in Hydrodynamics* (ed. J. Grue, B. Gjevik & J. E. Weber), pp. 91–102. Springer.
- PAULSEN, B. T., BREDMOSE, H., BINGHAM, H. B. & JACOBSEN, N. G. 2014 Forcing of a bottom-mounted circular cylinder by steep regular water waves at finite depth. *J. Fluid Mech.* **755**, 1–34.
- SARPKAYA, T. 1986 Force on a circular cylinder in viscous oscillatory flow at low Keulegan–Carpenter numbers. *J. Fluid Mech.* **165**, 61–71.
- STAGONAS, D., BULDAKOV, E. & SIMONS, R. 2014 Focusing unidirectional wave groups on finite water depth with and without currents. In *Thirty-fourth International Conference on Coast. Eng.* (ed. P. J. Lynett), pp. 1–6. Coastal Engineering Research Council.
- STANSBERG, C. T., BAARHOLM, R., KRISTIANSEN, T., HANSEN, E. W. M., RORTVEIT, G. *et al.* 2005 Extreme wave amplification and impact loads on offshore structures. In *Offshore Technology Conference, OTC-17487-MS*. Offshore Technology Conference.
- STANSBY, P. K., DEVANEY, L. C. & STALLARD, T. J. 2013 Breaking wave loads on monopiles for offshore wind turbines and estimation of extreme overturning moment. *IET Renew. Power Gener.* **7** (5), 514–520.
- SUN, L., ZANG, J., CHEN, L. F., EATOCK TAYLOR, R. & TAYLOR, P. H. 2016 Regular waves onto a truncated circular column: a comparison of experiments and simulations. *Appl. Ocean Res.* **59**, 650–662.
- TAYLOR, P. H. & WILLIAMS, B. A. 2004 Wave statistics for intermediate water depth – NewWaves and symmetry. *J. Offshore Mech. Arct. Engng* **126**, 54–59.
- TROMANS, P., SWAN, C. & MASTERTON, S. 2006 Nonlinear potential flow forcing: the ringing of concrete gravity based structures. *Health and Safety Executive, United Kingdom, HSE Rep.* (468). The Health and Safety Executive.
- TROMANS, P. S., ANATURAK, A. & HAGENMEIJER, P. 1991 A new model for the kinematic of large ocean waves – applications as a design wave. In *First International Conference on Offshore and Polar Engineering*, pp. 64–71. International Society of Offshore and Polar Engineers.
- VYZIKAS, T., RANSLEY, E., HANN, M., MAGAGNA, D., GREAVES, D., SIMMONDS, D., MAGAR, V. & CONLEY, D. 2013 Integrated numerical modelling system for extreme wave events at the wave hub site. In *From Sea to Shore – Meeting the Challenges of the Sea*, pp. 316–325. ICE Publishing.
- WALKER, D. A. G., TAYLOR, P. H. & EATOCK TAYLOR, R. 2004 The shape of large surface waves on the open sea and the Draupner New Year wave. *Appl. Ocean Res.* **26** (3), 73–83.
- ZANG, J., GIBSON, R., TAYLOR, P. H., EATOCK TAYLOR, R. & SWAN, C. 2006 Second order wave diffraction around a fixed ship-shaped body in unidirectional steep waves. *J. Offshore Mech. Arct. Engng* **128**, 1–11.
- ZANG, J., LIU, S., EATOCK TAYLOR, R. & TAYLOR, P. H. 2009 Wave run-up and response spectrum for wave scattering from a cylinder. In *Nineteenth International Conference on Offshore and Polar Engineering*, vol. 19, pp. 183–188. International Society of Offshore and Polar Engineers.
- ZANG, J., TAYLOR, P. H., MORGAN, G., TELLO, M., GRICE, J. & ORSAGHOVA, J. 2010 Experimental study of non-linear wave impact on offshore wind turbine foundations. In *Third International Conference on the Application of Physical Modelling to Port and Coastal Protection* (ed. V. Penchev & F. T. Pinto), vol. 19, pp. 1–7. International Centre for Coastal Resources.