

PDF hosted at the Radboud Repository of the Radboud University Nijmegen

The following full text is a preprint version which may differ from the publisher's version.

For additional information about this publication click this link.

<http://hdl.handle.net/2066/103548>

Please be advised that this information was generated on 2017-12-06 and may be subject to change.

Multisite spectroscopic seismic study of the β Cep star V2052 Ophiuchi: inhibition of mixing by its magnetic field

M. Briquet,^{1,2,3*}† C. Neiner,³ C. Aerts,^{2,4} T. Morel,¹ S. Mathis,^{5,3} D.R. Reese,¹ H. Lehmann,⁶ R. Costero,⁷ J. Echevarria,⁷ G. Handler,⁸ E. Kambe,⁹ R. Hirata,¹⁰ S. Masuda,¹¹ D. Wright,¹² S. Yang,¹³‡, O. Pintado,¹⁴ D. Mkrtichian,^{15,16} B.-C. Lee,¹⁷ I. Han,¹⁷ A. Bruch,¹⁸ P. De Cat,¹⁹ K. Uytterhoeven,^{20,21} K. Lefever,^{2,22} J. Vanautgaerden,² B. de Batz,³ Y. Frémat,¹⁹ H. Henrichs,²³ V.C. Geers,²⁴ C. Martayan,²⁵ A.M. Hubert,²⁶ O. Thizy²⁷ and A. Tijani²⁸

¹ Institut d'Astrophysique et de Géophysique Université de Liège, Allée du 6 Août 17, B-4000 Liège, Belgium

² Institute of Astronomy - KULeuven, Celestijnenlaan 200D, 3001 Leuven, Belgium

³ LESIA, UMR 8109 du CNRS, Observatoire de Paris, UPMC, Univ. Paris Diderot, 5 place Jules Janssen, 92195 Meudon Cedex, France

⁴ Department of Astrophysics, University of Nijmegen, PO Box 9010, 6500 GL Nijmegen, The Netherlands

⁵ Laboratoire AIM Paris-Saclay, CEA/DSM-CNRS-Université Paris Diderot; IRFU/SAP, Centre de Saclay, 91191 Gif-sur-Yvette Cedex, France

⁶ Thüringer Landessternwarte Tautenburg (TLS), Sternwarte 5, 07778 Tautenburg, Germany

⁷ Instituto de Astronomía, Universidad Nacional Autónoma de México, Ciudad Universitaria, México, D.F., 04510, México

⁸ Copernicus Astronomical Center, Bartycka 18, 00-716 Warsaw, Poland

⁹ Okayama Astrophysical Observatory, National Astronomical Observatory of Japan, Honjyo 3037-5, Kamogata, Asakuchi, Okayama, 719-0232, Japan

¹⁰ Otokoyama-Yutoku 7, E17-201, Yawata, Kyoto, 614-8371, Japan

¹¹ Hayashi 2528-5, Takamatsu, Kagawa, 761-0301, Japan

¹² Department of Astrophysics, School of Physics, University of New South Wales, NSW 2050, Australia

¹³ Department of Physics and Astronomy, University of Victoria, PO Box 3055, Victoria BC V8W 3P6, Canada

¹⁴ Instituto Superior de Correlación Geologica-CONICET, Tucuman, Argentina

¹⁵ National Astronomical Research Institute of Thailand, Siripanich Building 191 Huay Kaew Road, Muang District, Chiangmai, Thailand 50200

¹⁶ Crimean Astrophysical Observatory, Nauchny, Crimea, 98409, Ukraine

¹⁷ Korea Astronomy and Space Science Institute, 776, Daedeokdae-Ro, Youseong-Gu, Daejeon 305-348, Korea

¹⁸ Laboratório Nacional de Astrofísica, Rua Estados Unidos, 154 – Bairro das Nacões, 37504-364 Itajubá, Brazil

¹⁹ Royal Observatory of Belgium, 3 avenue circulaire, 1180 Brussel, Belgium

²⁰ Instituto de Astrofísica de Canarias (IAC), Calle Via Lactea s/n, 38205 La Laguna, Tenerife

²¹ Dept. Astrofísica, Universidad de La Laguna (ULL), Tenerife

²² Belgian Institute for Space Aeronomy, Ringlaan 3, 1080 Brussels, Belgium

²³ Astronomical Institute Anton Pannekoek, University of Amsterdam, Science Park 904, 1098XH Amsterdam, Netherlands

²⁴ ETH Zurich, Institute for Astronomy, Wolfgang-Pauli-Strasse 27, 8093 Zurich, Switzerland

²⁵ European Organisation for Astronomical Research in the Southern Hemisphere, Alonso de Cordova 3107, Vitacura, Santiago de Chile, Chile

²⁶ GEPI, UMR 8111 du CNRS, Observatoire de Paris, Univ. Paris Diderot, 5 place Jules Janssen, 92195 Meudon Cedex, France

²⁷ Shelyak Instruments, Les Roussets, 38420 Revel, France

²⁸ Astronomical Institute “Anton Pannekoek”, University of Amsterdam, Kruislaan 403, 1098 SJ Amsterdam, the Netherlands

ABSTRACT

We used extensive ground-based multisite and archival spectroscopy to derive observational constraints for a seismic modelling of the magnetic β Cep star V2052 Ophiuchi. The line-profile variability is dominated by a radial mode ($f_1=7.14846$ d $^{-1}$) and by rotational modulation ($P_{\text{rot}}=3.638833$ d). Two non-radial low-amplitude modes ($f_2=7.75603$ d $^{-1}$ and $f_3=6.82308$ d $^{-1}$) are also detected. The four periodicities that we found are the same as the ones discovered from a companion multisite photometric campaign (Handler et al. 2012) and known in the literature. Using the photometric constraints on the degrees ℓ of the pulsation modes, we show that both f_2 and f_3 are prograde modes with $(\ell, m)=(4, 2)$ or $(4, 3)$. These results allowed us to deduce ranges for the mass ($M \in [8.2, 9.6] M_{\odot}$) and central hydrogen abundance ($X_c \in [0.25, 0.32]$) of V2052 Oph, to identify the radial orders $n_1=1$, $n_2=-3$ and $n_3=-2$, and to derive an equatorial rotation velocity $v_{\text{eq}} \in [71, 75]$ km s $^{-1}$. The model parameters are in full agreement with the effective temperature and surface gravity deduced from spectroscopy. Only models with no or mild core overshooting ($\alpha_{\text{ov}} \in [0, 0.15]$ local pressure scale heights) can account for the observed properties. Such a low overshooting is opposite to our previous modelling results for the non-magnetic β Cep star θ Oph having very similar parameters, except for a slower surface rotation rate. We discuss whether this result can be explained by the presence of a magnetic field in V2052 Oph that inhibits mixing in its interior.

Key words: stars: early-type – stars: individual: V2052 Oph – stars: interiors – stars: magnetic fields – stars: spots

1 INTRODUCTION

Stellar modelling of B-type main-sequence stars is benefiting greatly from seismic data of β Cep stars. Among the various classes of B-type pulsators (e.g. Chapter 2 of Aerts et al. 2010) this is the only one with members having clearly identified values for the wavenumbers (ℓ, m, n) for several of the detected oscillation modes, which is a prerequisite for successful seismic modelling.

Models based on standard input physics could satisfactorily explain seismic data of the β Cep stars V836 Cen (Aerts et al. 2003; Dupret et al. 2004), β CMa (Mazumdar et al. 2006), δ Ceti (Aerts et al. 2006), and θ Oph (Briquet et al. 2007). However, models with the same input physics failed to explain the much richer seismic constraints assembled from huge multi-technique multisite campaigns organised during many months for the β Cep stars ν Eri (De Ridder et al. 2004; Pamyatnykh, Handler & Dziembowski 2004; Aussenloos et al. 2004) and 12 Lac (Handler et al. 2006; Dziembowski & Pamyatnykh 2008; Desmet et al. 2009). These campaigns led to more than twice the number of modes known previously in those two stars, among which there were one or two high-order g -modes, and revealed shortcomings in the excitation predictions for some modes.

A similar excitation problem occurred for γ Peg, a class member found to pulsate in several high-order g -modes and low-order p -modes from MOST space-based photometry (Handler et al. 2009; Walczak & Daszyńska-Daszkiewicz 2010). Zdravkov & Pamyatnykh (2009) suggested that an

increase in the opacities by 20% might solve the excitation problem of γ Peg. Another excitation problem was pointed out for one mode of the CoRoT target V1449 Aql (Aerts et al. 2011). The recent detection and interpretation of β Cep-type modes in the O9V pulsator HD 46202 (Briquet et al. 2011) with CoRoT observations showed that the excitation problem of massive pulsators is acute, since none of the detected modes is predicted to be excited for appropriate stellar models representing this star. In all these studies, the effects of rotation on the excitation and amplitude of modes were not or only partly treated. Non-adiabatic computations taking rotation into account of the excitation of modes are available (e.g. Lee 1998; Townsend 2005) but those of the amplitude of modes are just starting to become available (Lee 2012). These calculations will be very useful to check whether a better agreement between observed and theoretically excited modes may be found.

An important result of these asteroseismic studies is the evidence for non-rigid interior rotation in some β Cep stars. It was shown that V836 Cen, ν Eri and 12 Lac rotate more rapidly in their inner parts than at their surface. These works also allow us to test whether core overshooting has to be included in our stellar models. Overshooting represents here the amount of non-standard mixing processes (Maeder 2009; Mathis 2010). For most of the β Cep targets modelled so far, the conclusion was the need for core overshooting for a better agreement with the pulsational characteristics. The derived core overshooting parameter values are however small (around 0.10 local pressure scale heights for V836 Cen and HD 46202, and around 0.20 for δ Ceti, β CMa, and 12 Lac) with the exception of θ Oph for which the value was found to be around 0.40. For two cases, ν Eri and V1449 Aql, the core overshooting parameter could be kept to zero.

Space-based observations revealed other pulsators than γ Peg with both g - and p -mode pulsations of SPB and β Cep

* E-mail: maryline.briquet@ulg.ac.be

† F.R.S.-FNRS Postdoctoral Researcher, Belgium

‡ Guest investigator, Dominion Astrophysical Observatory, Herzberg Institute of Astrophysics, National Research Council of Canada

types (Balona et al. 2011). For the CoRoT hybrid HD 50230, the observation of deviations from a uniform period spacing led to the first exploration of the regions adjacent to the core in a massive star (Degroote et al. 2010). HD 43317 was discovered by CoRoT to be another hybrid star with a wealth of pulsational constraints but also showing the presence of chemical inhomogeneities at its stellar surface (Pápics et al. 2012). Before space-based asteroseismology, the simultaneous presence of both pulsation and rotational modulation was found from ground-based spectroscopy only in β Cep (Telting, Aerts & Mathias 1997), V2052 Oph (Neiner et al. 2003), and κ Sco (Uytterhoeven et al. 2005). Another important discovery by means of space-based CoRoT data is the first observation of stochastically excited gravito-inertial modes in a massive star. Such modes have recently been detected in the hot (O9.5-B0) pulsator HD 51452 (Neiner et al., submitted), and this type of excitation should probably be more widely considered for massive pulsators.

Among β Cep stars with an asteroseismic modelling, a magnetic field has been detected so far in β Cep (Henrichs et al. 2000; Shibahashi & Aerts 2000) and in V1449 Aql (Hubrig et al. 2011; Aerts et al. 2011), although the field of the latter is still a matter of debate (Shultz et al. 2012). In order to understand the effect of a magnetic field on the seismic behaviour of β Cep stars, a multisite photometric and spectroscopic campaign was set up for the equatorial star V2052 Oph ($m_V=5.8$, spectral type B2IV/V), which is known to be a magnetic pulsator with a dominant radial mode of frequency 7.145 d^{-1} and a rotation frequency of 0.275 d^{-1} (Neiner et al. 2003). The star is slightly enriched in He, revealed a mild N excess (Morel et al. 2006), and was considered to be suitable as a seismic target, in view of the identified dominant radial mode and the discovery of an additional low-amplitude non-radial mode by Neiner et al. (2003).

The multisite photometry of V2052 Oph is reported in a companion paper by Handler et al. (2012). Here, we present the spectroscopic part of the campaign. After a description of our dataset in Sect. 2, we discuss the atmospheric parameters and chemical composition of the star (Sect. 3). Sect. 4 is devoted to our frequency analysis and mode identification. Besides our line-profile study, we make a comparison with stellar models (Sect. 5). We end with a discussion about the inhibition of mixing by magnetism and conclusions in Sect. 6 and Sect. 7, respectively.

2 THE DATA

A total of 1354 high-resolution spectroscopic exposures was assembled using 10 different telescopes spread over both hemispheres. In addition, we added the 205 spectra of Neiner et al. (2003, 2012), which allowed us to increase the time span of the data set and, thus, to achieve a better frequency accuracy. Table 1 summarizes the characteristics of the spectroscopic data. The resolving power $\lambda/\Delta\lambda$ of the spectrographs ranged from 20 000 to 70 000. When the instrument was not an échelle spectrograph, the spectral domain was chosen in order to cover the Si III triplet around 4567 \AA because these lines are strong without being much affected by blending. Moreover, they are dominated by temperature broadening so that the intrinsic profile can be modelled with

a Gaussian, which simplifies the modelling of the line-profile variations for mode identification purposes.

All exposures were subjected to the usual reduction process, i.e., we applied debiasing, background subtraction, flat-fielding and wavelength calibration. Subsequently, the barycentric corrections were determined and the spectra were normalized to the continuum by fitting a cubic spline function. Special care was taken with regard to the normalisation as it is not only important for an abundance analysis but also for a line-profile variation study. Indeed, as pointed out in Zima (2006), a mode identification with the FPF method (see Sect. 4.2) is very sensitive to it.

The average radial velocity (RV) per site is very similar for all spectra, so that there is no evidence that V2052 Oph is a spectroscopic binary. To correct for the slightly different zero points of the different telescopes, we proceeded in two different ways. In a first step, we shifted the spectra in such a way that the RV constant of a least-squares sine fit using the two dominant frequencies is put to the same value for each observatory. In another step, we shifted the spectra so that the minimum of the amplitude across the line profile for the radial mode (see Fig. 3) is put at the same value for each dataset. The two approaches gave the same results in our further analysis.

3 ATMOSPHERIC PARAMETERS AND CHEMICAL COMPOSITION

Wolff & Heasley (1985) estimated $T_{\text{eff}}=23\,000 \text{ K}$ and $\log g=4.2$ based on Strömgren photometry and fitting of the $H\gamma$ line using Kurucz (1979) atmospheric models, respectively. As shown by Nieva & Przybilla (2007), fitting the wings of the Balmer lines using LTE models systematically leads to an overestimation of the surface gravity. On the other hand, Niemczura & Daszyńska-Daszkiewicz (2005) obtained $T_{\text{eff}}=23\,350\pm 650 \text{ K}$, $\log g=3.89$ and a metallicity of -0.25 ± 0.16 dex with respect to solar based on LTE fitting of *IUE* spectra. Using non-LTE TLUSTY models (Hubeny & Lanz 1995) with a solar helium abundance, Neiner et al. (2003) found that $T_{\text{eff}}=21\,990 \text{ K}$ and $\log g=3.98$ provided the best match to three He I lines, but that the Si lines were poorly fit in that case. Relaxing the constraint on the He content, they inferred $T_{\text{eff}}=25\,200\pm 1100 \text{ K}$, $\log g=4.20\pm 0.11$ and about a factor two helium overabundance with respect to solar (helium abundance by number, $y\sim 0.16$). A satisfactory fit to the He and Si line profiles, as well as the continuum UV flux, was achieved in that case.

Morel et al. (2006) used the non-LTE line-formation codes DETAIL/SURFACE (Butler & Giddings 1985; Giddings 1981) to carry out an EW-based analysis of the average of our 105 exposures from McDonald Observatory. Using a series of time-resolved spectra minimises the fact that the temperature varies significantly along the pulsation cycle ($\Delta T_{\text{eff}}\sim 900 \text{ K}$; Morton & Hansen 1974; Kubiak & Seggewiss 1984). Fulfilling ionisation balance of Si II/Si III and fitting the wings of four Balmer lines led to $T_{\text{eff}}=23\,000\pm 1000 \text{ K}$ and $\log g=4.0\pm 0.2$. Guided by the results of Neiner et al. (2003), Kurucz models with He/H=0.178 were used. However, this choice has a negligible impact on the atmospheric parameters and abundances ($\Delta \log \epsilon \lesssim 0.05$ dex). It is not possible to further constrain T_{eff} from ionisation balance of

Table 1. Log of the spectroscopic data used in this paper. The Julian Dates are given in days, ΔT denotes the time-span expressed in days, N is the number of spectra and S/N denotes the average signal-to-noise ratio for each observatory measured around the Si III line at 4552 Å.

Observatory (Name of the instrument; resolution; wavelength range in Å)	Telescope	Julian Date		Data amount and quality			Observer(s)
		Begin	End	ΔT	N	S/N	
2000-2004		-2450000					
Pic du Midi, France (MUSICOS; 35 000; 4489–6619)	2.0-m TBL	1730	3186	1457	161	165	CN, HH, VG, AH, AT
2004		-2450000					
Pico dos Dias Observatory, Brazil (Esp Coudé; 30 000; 4479–4644)	1.6-m	3200	3201	2	20	290	AB
Complejo Astronómico El Leoncito Observatory, Argentina (EBASIM; 40 000; 3826–5759)	2.1-m	3219	3221	3	20	103	OP
Bohunsan Astronomical Observatory, Korea (BOES; 50 000; 3751–9803)	1.8-m	3133	3161	29	37	186	DM, BL
Dominion Astrophysical Observatory, Canada (45 000; 4457–4603)	1.2-m	3134	3197	64	53	213	SY
McDonald Observatory, USA (Coudé; 60 000; 3619–10274)	2.7-m	3195	3198	4	105	215	GH, ME
Okayama Astrophysical Observatory, Japan (HIDES; 68 500; 3991–4815)	1.88-m	3202	3228	27	119	144	EK
Thüringer Landessternwarte Tautenburg, Germany (67 000; 3700–5416)	2-m	3142	3219	77	215	116	HL
La Silla Observatory, Chile (CORALIE; 50 000; 3876–6820)	1.2-m Euler	3072	3282	211	60	104	KU, KL, JV
Mount John University Observatory, New Zealand (HERCULES; 70 000; 4456–7150)	1.0-m	3154	3193	40	88	152	DW
Observatorio Astronómico Nacional at San Pedro Mártir, México (Echelle Spectrograph; 20 000; 3781–6893)	2.1-m	3205	3211	7	637	282	RC, JE
2007-2010		-2450000					
Pic du Midi, France (NARVAL; 65 000; 3694–10484)	2.0-m TBL	4286	5403	1118	44	389	YF, CM, OT
Total				3674	1559		

neon owing to the lack of measurable Ne II lines (Morel & Butler 2008).

Simón-Díaz (2010) recently reported problems with the modelling of some Si lines using the non-LTE code FASTWIND (Puls et al. 2005). The model atom used by Morel et al. (2006) is similar in many respects and one may expect similar problems to be encountered in our case for some of these lines which have been used to constrain T_{eff} (namely Si II $\lambda 4128$, which was the only Si II line used, and Si III $\lambda 4813$, 4829). We have therefore decided to redetermine T_{eff} using lines that are thought to be properly modelled only (i.e., Si II $\lambda 6371$ and Si III $\lambda 4568$, 4575, 5740). As can be seen in Table 2, this leads to a much reduced abundance scatter and a mean value revised upwards to $\log \epsilon(\text{Si}) = 7.47 \pm 0.31$ dex. More importantly, the Si ionisation balance is also satisfied in that case, thus supporting the previous estimate ($T_{\text{eff}} \sim 23\,000$ K).

Neiner et al. (2003) claimed V2052 Oph to be oxygen weak and helium strong based on spectral fitting using TLUSTY models. However, the O abundance they find ($\log \epsilon = 8.52 \pm 0.11$ dex) may be regarded as typical of the values found for other B stars (see Morel 2009 for a review).

Table 2. Equivalent widths (EWs) rounded off to the nearest mÅ and non-LTE abundances (on the scale in which $\log \epsilon[\text{H}] = 12$) for the silicon lines properly modelled according to Simón-Díaz (2010) assuming $T_{\text{eff}} = 23\,000$ K, $\log g = 4.0$ and a microturbulent velocity of 1 km s^{-1} .

Transition	EW [mÅ]	$\log \epsilon(\text{Si})$ [dex]
Si II $\lambda 6371.4^a$	43	7.47
Si III $\lambda 4567.8$	100	7.38
Si III $\lambda 4574.8$	66	7.39
Si III $\lambda 5739.7$	85	7.65
Mean Si II lines		7.47
Mean Si III lines		7.47

^a Measured on the mean BOES spectrum, as this line falls at the extreme edge of an échelle order in the McDonald data and is hence unmeasurable.

There is instead evidence for a nitrogen excess. The logarithmic CNO abundances ratios are $[\text{N}/\text{C}] = -0.37 \pm 0.08$ and $[\text{N}/\text{O}] = -0.50 \pm 0.13$ dex, and appear significantly higher than

the solar values ($[N/C]=-0.60\pm 0.08$ and $[N/O]=-0.86\pm 0.08$ dex; Asplund et al. 2009). This is supported by the results of Morel et al. (2006) who found $[N/C]=-0.22\pm 0.19$ and $[N/O]=-0.40\pm 0.35$ dex.¹ A nitrogen overabundance is observed in other magnetic B stars on the main sequence. We refer to Morel (2010) and Martins et al. (2012) for a discussion on this matter.

Similarly to Neiner et al. (2003), a helium overabundance was reported by Morel et al. (2006). However, the uncertainties were large and the evidence much weaker in that case ($y=0.118\pm 0.032$). Although the helium-rich status of V2052 Oph has yet to be unambiguously established, this star stands out by the difficulty of fitting the lines using a single He abundance, a fact which explains the large error bars (Morel et al. 2006). This phenomenon might be related to surface inhomogeneities/vertical stratification of helium in this magnetic star. The recent spectropolarimetric measurements of Neiner et al. (2012) showed that He patches are situated close to the magnetic poles.

4 LINE-PROFILE STUDY

4.1 Frequency analysis

For our line-profile study, we considered sufficiently strong and unblended lines of different chemical elements (He, C, N, O, Mg, Al, Si, S, Fe). These spectral lines were chosen among the list of lines used for the abundance analysis study by Morel et al. (2006; see their Table A.1). In particular, we analysed the Si III triplet around 4567 Å and the He I line at 4713 Å. The same periodicities were found whatever the considered lines. In what follows we only describe our frequency analysis on the Si III 4552 Å line.

4.1.1 Equivalent width and radial velocity data

To perform our frequency analysis, we used the software package FAMIAS² (Zima 2008). We started by examining the radial velocity (RV) and equivalent width (EW) measurements. In the RV data, we first recovered the known pulsation frequency $f_1=7.14846$ d⁻¹ and its harmonic $2f_1$ with an amplitude of 6.7 and 1.5 km s⁻¹, respectively. The error estimate of our determined frequency is between 0.0000002 d⁻¹ according to Montgomery & O’Donoghue (1999) (calculated to be $\sigma_f = \sqrt{(6)\sigma_{\text{std}}/\pi\sqrt{(N)}A_f\Delta T}$, where σ_{std} is the standard deviation of the final residuals, A_f the amplitude of the frequency f , and ΔT the total timespan of the observations) and 0.0003 d⁻¹ (calculated to be $1/\Delta T$). In order to be conservative, we adopt five significant digits, also for the other frequencies detected in the dataset. The EW data also vary with f_1 . It is due to temperature variations caused by the oscillatory displacement of the stellar

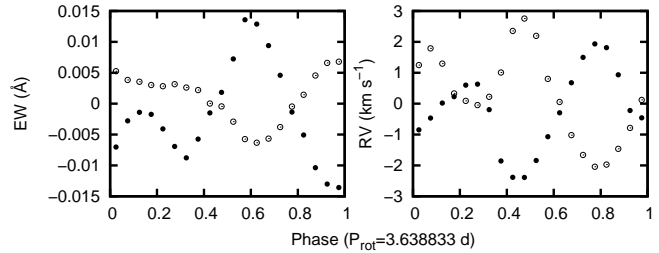


Figure 1. Phase diagrams of the phase-binned average EW (left) and RV (right) measurements computed from the He I 4713 Å line (full circles) and the Si II 4552 Å line (open circles), after prewhitening the pulsation frequency f_1 , for P_{rot} .

surface (De Ridder et al. 2002). Such a behaviour is observed in several β Cep stars with a high-amplitude mode, such as V1449 Aql (Briquet et al. 2009 and references therein). Besides f_1 , we only found a second independent frequency in the RV and EW datasets: the frequency 0.27481 d⁻¹ and its harmonics. This variability was first discovered from the periodic variation of UV resonance lines observed with *IUE* (Neiner et al. 2003, $P_{\text{rot}}=3.638833$ d) and interpreted as due to the stellar rotation. This interpretation is definitely confirmed by recent magnetic field data that vary with the same period (Neiner et al. 2012). Moreover, as we describe below, the observed behaviour in the spectral lines is typical of the presence of surface chemical inhomogeneities, which leads to line-profile variability as the star rotates.

In Fig. 1, we show phase diagrams of the EW and RV measurements after prewhitening the pulsation frequency f_1 , for P_{rot} . These plots resemble those of the B6 star HD 105382 and of the B7 star HD 131120 (see Briquet et al. 2001, 2004). These two stars are He-weak stars whose monophasic light and line-profile variability is interpreted as due to surface chemical spots, which are the result of complex interactions between radiatively driven diffusion processes and a stellar magnetic field (Alecian et al. 2011). For V2052 Oph, Neiner et al. (2003) concluded that the observed rotational modulation is also mainly due to chemical variations, as the weak magnetic field of the star is unlikely to produce strong temperature effects (see discussion in their Sect. 7.1). As shown in Briquet et al. (2001), a non-sinusoidal RV variation with f_{rot} and $2f_{\text{rot}}$ can be reproduced by two spots of the same element having a longitude difference of $\sim 180^\circ$ to account for the two maxima (minima) separated by a phase difference of ~ 0.5 . Moreover, the out of phase variation of the EW and RV data can be explained if ionized helium is enhanced in regions of the stellar surface where Si II is depleted and vice versa. This trend was found for both HD 105382 and HD 131120 by deriving detailed abundance maps for Si and He (Briquet et al. 2004). By analogy, the same conclusion may be obtained for V2052 Oph. An inversion of the observationally modulated line-profile variations into a two-dimensional abundance distribution (so called Doppler mapping; e.g. Piskunov & Rice 1993) could confirm it but is beyond the scope of this paper. In the case of V2052 Oph, the difficulty is to disentangle the variability due to pulsation and the one due to rotational modulation that is also found in spectral lines of other chemical elements such as C, N, O and Fe. Moreover, while diffusion models in magnetic Ap stars are

¹ These errors are the quadratic sum of the uncertainties in the CNO abundances. However, because the abundances have the same qualitative dependence against changes in the atmospheric parameters, computing the errors on the ratios themselves narrows down the errors and strengthens the case for an N excess: $[N/C]=-0.22\pm 0.18$ and $[N/O]=-0.40\pm 0.22$ dex.

² FAMIAS has been developed in the framework of the FP6 European Coordination Action HELAS - <http://www.helas-eu.org/>

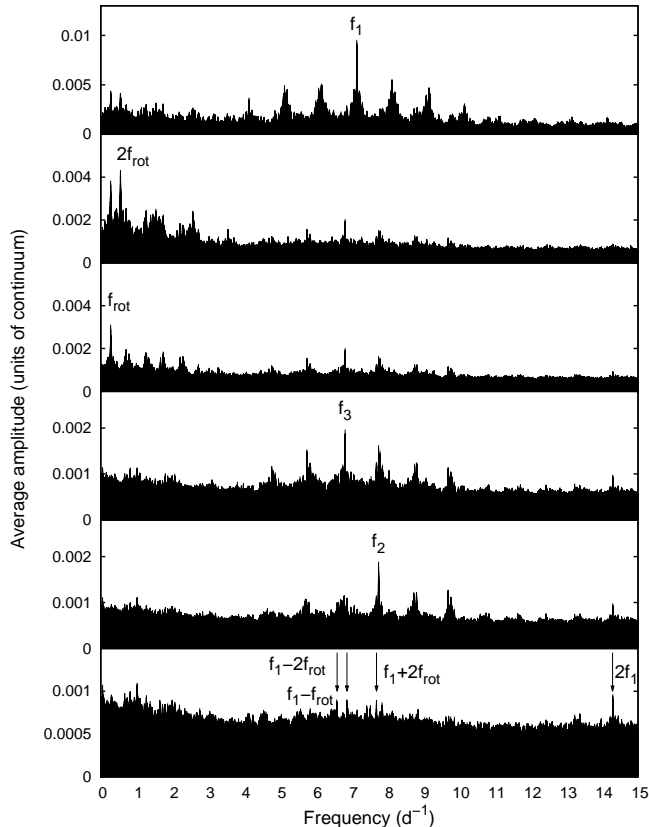


Figure 2. Amplitude periodogram, which is an average of all Fourier spectra across the Si III 4552 Å profile. The different panels show the periodograms in successive stages of prewhitening (top to bottom). We follow the notation of Handler et al. (2012) for the frequencies. Note the different scale of the Y-axis in the different panels.

available for a comparison with observed abundance maps (Michaud et al. 1981; Vauclair et al. 1991), such theoretical models need to be developed for stars as hot as V2052 Oph.

4.1.2 2D analysis

After a one-dimensional frequency search on the integrated quantities, we performed a pixel-by-pixel Fourier analysis across the line profile (2D analysis) by means of the tools available in FAMIAS. In Fig. 2, the mean of all Fourier spectra across the Si III 4552 Å line is shown for subsequent steps of prewhitening. The significance of a frequency cannot be derived from the average Fourier spectrum but one has to proceed as follows. The wavelength at which the given frequency has the highest amplitude is determined. Then, the Fourier spectrum at this pixel is computed and the frequency is retained if its amplitude exceeds 4 times the signal-to-noise (Breger et al. 1993). The noise level is calculated in a 5 d^{-1} interval centered on the frequency of interest. As for some other β Cep stars (Telting et al. 1997; Schrijvers, Telting & Aerts 2004; Briquet et al. 2005), the pixel-by-pixel analysis led to additional independent frequencies compared to the 1D frequency search: $f_2=7.75603 \text{ d}^{-1}$ and $f_3=6.82308 \text{ d}^{-1}$. In the residual periodogram, the frequency

$2f_1$ and combinations of the dominant frequencies f_1 , f_{rot} and $2f_{\text{rot}}$ are also seen, as expected in a 2D search (Zima 2008). Because the 2D analysis is more sensitive to the detection of high-degree modes than a 1D analysis, it indicates that f_2 and f_3 are probably not low-degree modes. The four frequencies found in our spectra were also discovered from the multisite photometry by Handler et al. (2012) and are thus certain.

4.2 Mode identification

4.2.1 Previous results

The dominant mode with frequency $f_1=7.14846 \text{ d}^{-1}$ was first identified as radial by Heynderickx, Waelkens & Smeyers (1994) and Cugier, Dziembowski & Pamyatnykh (1994). This is unambiguously confirmed by the multisite photometric campaign presented in Handler et al. (2012). As for the frequencies $f_2=7.75603 \text{ d}^{-1}$ and $f_3=6.82308 \text{ d}^{-1}$, Handler et al. (2012) deduced that both modes correspond to $\ell=4$ or $\ell=6$ by comparing the *uvy* passband amplitudes with the theoretically predicted ones. The mode with frequency f_3 was first identified by Neiner et al. (2003) as an $\ell_3=3$ or 4 mode by means of the MUSICOS spectra. A study by Pollard et al. (2008) of the HERCULES spectra also revealed this mode. Their mode identification showed that it corresponds to an $\ell_3=4\pm 1$ and $m_3=2\pm 2$ with a best fitting obtained for $(\ell_3, m_3)=(4, 2)$. The combination of these photometric and spectroscopic results allows us to safely conclude that $\ell_3=4$ for f_3 . Because of geometrical cancellation, Handler et al. (2012) concluded that the most likely identification for f_2 is also $\ell_2=4$. We check these conclusions through our mode identification aimed at giving constraints on (ℓ, m) for f_2 and f_3 (see Sect. 4.2.3).

4.2.2 The method used

Two independent methods based on spectroscopy are usually used to identify the modes of main-sequence pulsators hotter than the Sun, namely the moment method (Briquet & Aerts 2003) and the Fourier parameter fit (FPF) method (Zima 2006). Both methods are implemented in the software package FAMIAS and a typical application of them on a β Cep star can be found in Desmet et al. (2009) for 12 Lac. For V2052 Oph, f_2 and f_3 are detected in the second moment (line width) but not in the first moment (radial velocity). Therefore, we only made use of the FPF method, which is appropriate since the projected rotation velocity of our target is sufficiently large ($v \sin i > 20 \text{ km s}^{-1}$).

In the FPF technique, a multi-periodic non-linear least-squares fit of sinusoids is computed using all detected frequencies for every wavelength bin across the profile according to the formula $Z + \sum_i A_i \sin[2\pi(f_i t + \phi_i)]$, where Z is the zero-point, and A_i , f_i , and ϕ_i are the amplitude, frequency, and phase of the i -th frequency, respectively. This gives, for each pulsation frequency, the observational values of the zero-point, amplitude and phase as a function of the position in the line profile. The wavenumbers (ℓ, m) and other parameters, such as the stellar inclination angle i , are then determined in such a way that the theoretically computed zero-point, amplitude and phase values derived from synthetic line profiles best fit the observed values. The

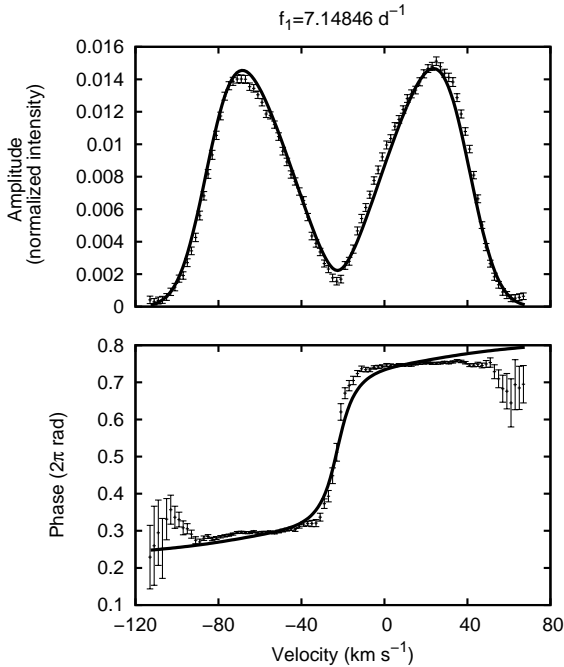


Figure 3. Observed amplitude and phase distributions of the f_1 frequency across the Si III 4552 Å line profile (points with error bars) compared to the theoretical ones (full line) for $(\ell_1, m_1)=(0, 0)$. The amplitude is expressed in units of continuum and the phase in 2π radians.

Table 3. The best-fit solutions of our mode identification with the FPF method for $f_2=7.75603$ d $^{-1}$ and $f_3=6.82308$ d $^{-1}$. $f_1=7.14846$ d $^{-1}$ is adopted as the radial mode. i and v_{eq} are the stellar inclination angle and the equatorial rotational velocity, respectively.

ID	χ^2	(ℓ_2, m_2)	(ℓ_3, m_3)	i ($^\circ$)	v_{eq} (km s $^{-1}$)
1	1.16	(4, 3)	(4, 2)	59.7 \pm 2.1	75.0 \pm 1.6
2	1.23	(4, 3)	(4, 4)	33.6 \pm 1.9	118.2 \pm 5.1
3	1.31	(4, 3)	(4, 3)	81.6 \pm 0.7	65.3 \pm 0.5
4	1.42	(4, 2)	(4, 2)	53.9 \pm 3.1	80.2 \pm 3.5
5	1.57	(4, 2)	(4, 4)	46.9 \pm 2.4	89.1 \pm 3.4
6	1.63	(4, 2)	(4, 3)	55.3 \pm 7.9	78.0 \pm 7.7
7	1.81	(4, 4)	(4, 2)	45.8 \pm 2.6	90.5 \pm 3.5
8	1.86	(4, 4)	(4, 3)	28.5 \pm 3.3	136.1 \pm 14.9
9	2.01	(4, 4)	(4, 4)	27.5 \pm 1.1	141.2 \pm 5.5

goodness of the fit is expressed as a reduced χ^2 -value (see Zima 2006). The approximations made in FAMIAS to compute the synthetic profiles (see Zima 2006 for details) remain valid for our study case. As for stellar rotation, the first order effects of the Coriolis force are taken into account in the displacement field.

4.2.3 Additional constraints

We applied the FPF method using the FAMIAS software to identify the modes detected in our spectroscopic data. In our procedure, we always adopted $(\ell_1, m_1)=0$ for the dominant mode as deduced from photometry and confirmed by our spectroscopy. Indeed, the amplitude and phase behaviour

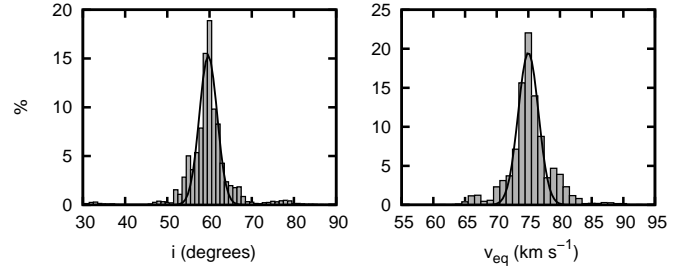


Figure 4. Histograms for the inclination and equatorial rotational velocity of the star derived from the FPF method, for the combination $(\ell_2, m_2)=(4, 3)$ and $(\ell_3, m_3)=(4, 2)$.

across the line profile for this mode is very typical for a radial pulsation mode (see Fig. 3).

We adopted the values $M = 9 M_\odot$ and $R = 5 R_\odot$ for the mass and radius, respectively (Handler et al. 2012). The mode identification results are robust when using different values for these parameters, within the errors. Before starting the mode identification, the parameter space was restricted by estimating values for the projected rotational velocity $v \sin i$, the width of the intrinsic gaussian profile σ , and the equivalent width EW from a least-squares fit of a rotationally broadened synthetic profile to the zero-point profile. A genetic optimization with the following free parameters was afterwards adopted: $\ell \in [0, 8]$ with a step of 1, $m \in [-\ell, \ell]$ with a step of 1, the surface velocity amplitude $a \in [1, 50]$ km s $^{-1}$ with a step of 1 km s $^{-1}$, the stellar inclination angle $i \in [1, 90]^\circ$ with a step of 1° , $v \sin i \in [50, 70]$ km s $^{-1}$ with a step of 0.1 km s $^{-1}$ and $\sigma \in [5, 15]$ km s $^{-1}$ with a step of 0.1 km s $^{-1}$. The fitting between the observed and theoretical zero-point, amplitude and phase was carried out by applying genetic optimization routines. First, we used mono-mode fits in order to speed up the computations. Once constraints on the parameters are obtained, we performed a multi-mode fit.

The results clearly exclude ℓ below 3 and above 5 for both low-amplitude modes. Combining this outcome with the photometric one ($\ell=4$ or 6; Handler et al. 2012), we find that $\ell=4$ for f_2 and f_3 . In order to fit the phase across the profile, we also found that $m > 0$ (where a positive m -value denotes a prograde mode) for both modes. Moreover, a visual inspection of the solutions revealed that we could also exclude the (ℓ, m) -combinations involving $m=1$. The matching between the observed and synthetic amplitudes across the profile was not satisfactory in these cases.

In Table 3, we list the remaining nine acceptable (ℓ, m) -combinations and give estimates of the stellar inclination angle i and equatorial rotational velocity v_{eq} obtained through a simultaneous fit of the modes. Histograms, constructed using the χ^2 -value as a weight, for the solution with the lowest χ^2 (see Table 3) are displayed in Fig. 4. Fig. 5 depicts the matching between the observed and theoretical amplitude and phase across the line, for the combination $(\ell_2, m_2)=(4, 3)$ and $(\ell_3, m_3)=(4, 2)$.

5 COMPARISON WITH STELLAR MODELS

We computed stellar models accounting for the derived observational properties of V2052 Oph. To this end, we used

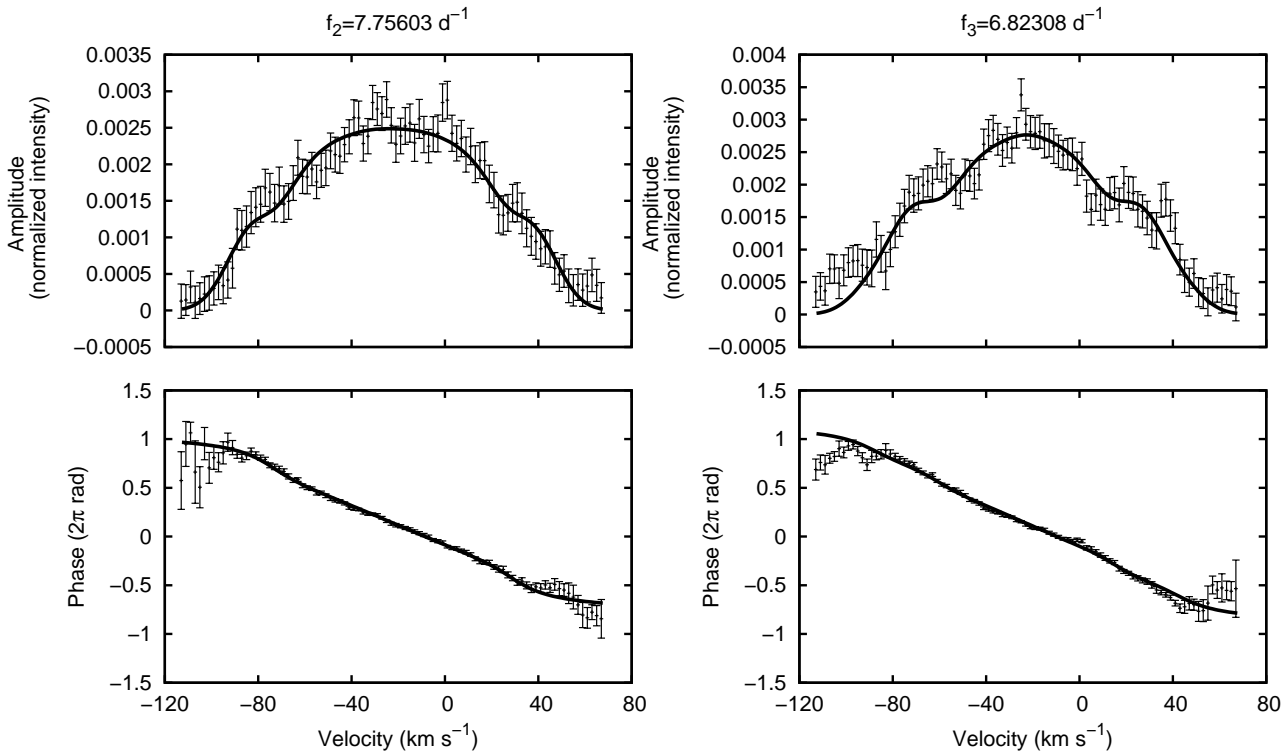


Figure 5. Amplitude and phase distributions for f_2 and f_3 for the Si III 4552 Å line (points with error bars) and comparison with the theoretical ones (full lines) for the solution with $(\ell_2, m_2) = (4, 3)$ and $(\ell_3, m_3) = (4, 2)$. The amplitudes are expressed in units of continuum and the phases in 2π radians.

the evolutionary code CLÉS (Code Liégeois d’Évolution Stellaire; Scuflaire et al. 2008a) with the input physics described in Briquet et al. (2011). For each stellar model considered, the theoretical pulsation frequency spectrum was calculated in the adiabatic approximation with the code LOSC (Scuflaire et al. 2008b). Once models that fit the observed modes were selected, we checked the excitation of the pulsation modes with the linear non-adiabatic code MAD (Dupret 2001; Dupret et al. 2002). In our computations, the effects of rotation on the pulsation frequencies were taken into account to first order, which is sufficient for our approach as justified *a posteriori* at the end of this section.

By varying the mass ($M \in [7.6, 20.0] M_\odot$) with a step of $0.1 M_\odot$, the hydrogen mass fraction ($X \in [0.68, 0.74]$) with a step of 0.02, the metallicity ($Z \in [0.010, 0.018]$) with a step of 0.002 and the core overshooting parameter ($\alpha_{ov} \in [0, 0.5]$) with a step of 0.05 – expressed in local pressure scale heights), we computed models from the zero-age main-sequence (ZAMS) to the terminal-age main-sequence (TAMS).

Given the rotation period of the star and the model radius when f_1 is identified as the fundamental, we get an equatorial rotational velocity between 71 and 75 km s^{-1} for V2052 Oph. With $v \sin i \in [61, 65] \text{ km s}^{-1}$, the star has an inclination $i \in [54, 66]^\circ$. This range of inclination angles is in full agreement with the one determined by Neiner et al. (2012) who obtained an inclination between 53° and 77° by synthesizing the Stokes V profiles of the star with a centered

or offcentered dipole model. Stellar models with the radial mode as the first overtone (or higher overtones) have larger radii, implying an inclination lower than 50° that is not compatible with the constraints deduced from the magnetic field data. We refer to Hander et al. (2012) for a deeper discussion.

From the models that we computed, we thus selected the ones along the main-sequence evolutionary track that fit the radial fundamental mode to within 0.05 d^{-1} . The position of these models in the $\log T_{\text{eff}} - \log g$ diagram is compared to the spectroscopic error box of the star in Fig. 6. For all models matching f_1 , we computed the theoretical frequency spectrum of low-order p - and g -modes with a degree of $\ell=4$. The rotationally split frequencies were derived using the Ledoux constant as $f_{n\ell m} = f_{n\ell 0} + m\beta_{n\ell}f_{\text{rot}}$, where $\beta_{n\ell}$ is a structure constant depending on the stellar model. Afterwards, to each model fitting the radial fundamental mode, we assigned a χ^2 -value, which compares the observed frequencies f_i^{obs} with the theoretically computed ones f_i^{th} , as follows:

$$\chi_f^2 = \sum_{i=2}^3 \frac{(f_i^{\text{obs}} - f_i^{\text{th}})^2}{\sigma^2} \quad (1)$$

where σ is taken to be 0.05 d^{-1} to account for uncertainties in our modelling prescriptions (see last paragraph of this section). The models corresponding to one of the nine (ℓ, m) -combinations of Table 3 and having a $\chi_f^2 < 1$ were retained, also requiring the excitation of the radial mode.

Table 4. Physical parameters of the models fitting the three pulsation modes detected in V2052 Oph according to their mode identifications listed in Table 3, using the same IDs. The last line corresponds to the parameter range of our best models for the star, i.e., with a χ_f^2 as defined in Eq. (1) lower than 1 and excluding solutions with ID 7, 8 and 9.

ID	mass (M_\odot)	radius (R_\odot)	Z	α_{ov}	T_{eff} (K)	log g	log(L/L_\odot)	age (Myr)	X_c
1	[8.2, 9.0]	[5.16, 5.31]	[0.012, 0.016]	[0.00, 0.15]	[21370, 22190]	[3.93, 3.94]	[3.72, 3.76]	[19.9, 23.7]	[0.28, 0.32]
2	no model								
3	[8.9, 9.6]	[5.26, 5.38]	[0.010, 0.012]	[0.00, 0.10]	[22790, 23570]	[3.95, 3.96]	[3.85, 3.89]	[17.3, 18.3]	[0.27, 0.31]
4	[8.3, 9.0]	[5.17, 5.30]	[0.012, 0.016]	[0.00, 0.10]	[21600, 22250]	[3.93, 3.94]	[3.73, 3.77]	[19.2, 21.9]	[0.27, 0.30]
5	no model								
6	[9.0, 9.1]	[5.27, 5.29]	0.010	0.05	[23320, 23620]	3.95	[3.89, 3.87]	[16.9, 18.0]	[0.25, 0.27]
7	[8.1, 9.0]	[5.15, 5.31]	[0.016, 0.018]	[0.00, 0.15]	[20550, 21720]	[3.92, 3.94]	[3.64, 3.74]	[18.7, 26.5]	[0.30, 0.35]
8	[7.8, 9.6]	[5.10, 5.39]	[0.010, 0.018]	[0.00, 0.35]	[20260, 23680]	[3.91, 3.96]	[3.61, 3.90]	[15.6, 28.9]	[0.28, 0.37]
9	[7.7, 8.2]	[5.10, 5.19]	[0.014, 0.018]	[0.25, 0.40]	[20350, 21620]	[3.91, 3.92]	[3.62, 3.71]	[24.5, 30.1]	[0.33, 0.38]
	[8.2, 9.6]	[5.16, 5.38]	[0.010, 0.016]	[0.00, 0.15]	[21370, 23620]	[3.93, 3.96]	[3.72, 3.89]	[16.9, 23.7]	[0.25, 0.32]

These models are displayed as crosses in Fig. 6 and their physical parameters are listed in Table 4.

Although we permitted the two $\ell=4$ modes to have the same radial overtone, none of the models matching our observations are such that f_2 and f_3 belong to the same rotationally split multiplet. In all models appropriate for the star, the frequencies f_2 and f_3 have $n_2=-3$ (g_3 -mode) and $n_3=-2$ (g_2 -mode), respectively. Both frequencies are predicted to be excited by non-adiabatic computations in all cases. In fact, a scan of the modes with $\ell=4$ shows that only those with $n=-1, -2$, and -3 are theoretically excited. Following theory, modes with $n=-1, 1$ for $\ell=1, n=-1, -2$ for $\ell=2$, and $n=-1, -2, -3$ for $\ell=3$ are also excited in the same frequency range as the observed modes. Clearly, if they are present in V2052 Oph, their amplitudes are lower than the observed $\ell=4$ modes. It may be explained by the rotation rate of the star that is somewhat higher than in other well-studied β Cep stars with dominant low-degree modes (see Hander et al. 2012 for more comments).

In Table 3, the inclination angles i of solutions with ID 1, 4 and 6 are fully compatible with the stellar modelling. Solutions with ID 2 and 5 are rejected because no model with the corresponding (ℓ, m) -combinations could be found (see Table 4). If one limits the inclination range around 60° during the mode identification as performed in Sect. 4.2, solutions with ID 7, 8 and 9 have even higher χ^2 -values so that we can exclude them. However, solution with ID 3 is kept since the χ^2 -value is similar as before (1.33). The most probable identification for both f_2 and f_3 is thus $(\ell, m)=(4, 2)$ or $(4, 3)$.

The parameter ranges of our best models for V2052 Oph are listed in the last line of Table 4. They are obtained by only considering the solutions with ID 1, 3, 4 and 6 and are represented as white circles in Fig. 6. In this figure, we also distinguish the models associated to ID 1 as black circles. An important result is that only stellar models with no or mild core overshooting can explain our observational constraints. This is further discussed in the following section. One also notices the excellent agreement between our best fitting model parameters and the T_{eff} and log g -values derived from spectroscopy. Among β Cep stars with an asteroseismic modelling, such a consistency was also obtained for 12 Lac (Desmet et al. 2009) but it is not often the case

(e.g. Briquet et al. 2007; Briquet et al. 2011; Aerts et al. 2011).

In order to assess the influence of rotation on the pulsation frequency values, we calculated, using the 2D method described in Reese, Lignières & Rieutord (2006), the fundamental radial mode and the $\ell=4, n=-2, -3$ multiplets of rotating polytropic models with a polytropic index of 3 (which is typical of a radiative zone), and a mass and polar radius set to $9 M_\odot$ and $5 R_\odot$, respectively. A comparison between a first order approximation of the frequencies and the 2D calculations yielded differences around 0.05 d^{-1} for the radial mode, and 0.02 d^{-1} or less for the $\ell=4$ modes, for an equatorial rotational velocity of 75 km s^{-1} . As explained in Ballot et al. (2010), p -modes are more affected by the centrifugal deformation, given that their energy is concentrated towards the outer layers of the star, thereby explaining the larger difference for the radial fundamental mode. Although these differences can be detected, given the length of our observational run, they remain below the percent level compared to the frequencies. Furthermore, they are much smaller than the distance between the modes $(n, \ell, m) = (-2, 4, 0)$ and $(-3, 4, 0)$, and the spacing between consecutive members of the g -mode multiplets when the frequencies are expressed in an inertial frame. The above differences explain why we considered an error bar of 0.05 d^{-1} on the pulsation frequencies for our comparisons between observed and model frequencies.

6 DISCUSSION

V2052 Oph is very similar in terms of stellar parameters to the β Cep star θ Oph, except that V2052 Oph has a higher surface rotation velocity (see Table 5). θ Oph rotates at 6% of its critical breakup velocity, while V2052 Oph rotates at 16%. For such stars, we expect a larger core overshooting parameter for the faster rotator. Indeed, Browning et al. (2004) showed that when the rotation rate is increased (for given stratification and diffusivities) the penetration of flows coming from the convective core in the surrounding stably-stratified radiative envelope becomes more intense because of the stabilisation of the flow by the Coriolis acceleration. In addition, the rotational mixing associated to the possible

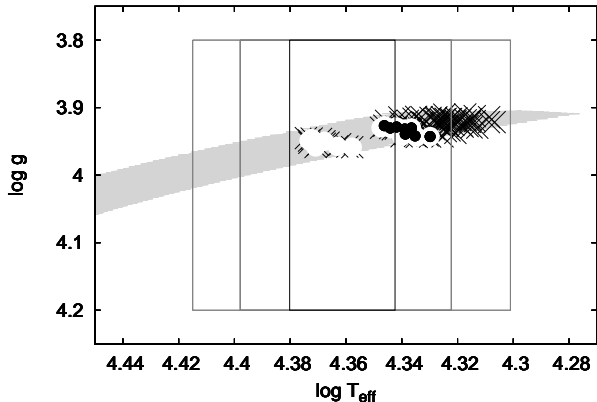


Figure 6. The error box represents the position of V2052 Oph, deduced from spectroscopy, in the $\log T_{\text{eff}} - \log g$ diagram. The 1, 2 and 3- σ regions in T_{eff} are shown. The light grey band corresponds to models that fit the radial fundamental mode. Our best models for the star are displayed as crosses (considering all nine (ℓ, m) -combinations of Table 4), white circles (with all solutions but ID 7, 8 and 9), black circles (for the solution with ID 1). We refer to the text for more explanations.

differential rotation increases with rotation rate (Mathis & Zahn 2004; Maeder 2009).

The reverse result is obtained since the core overshooting parameter is larger for θ Oph than for V2052 Oph. Indeed, Briquet et al. (2007) obtained $\alpha_{\text{ov}} = 0.44 \pm 0.07 H_p$ with $Z = 0.009$ to 0.015 for θ Oph, using the same tools and input physics as here. Using a different stellar evolution modelling code and a 2D linear adiabatic pulsation code, Lovekin & Goupil (2010) found $\alpha_{\text{ov}} = 0.28 \pm 0.05 H_p$ assuming $Z = 0.02$. The results of both studies are compatible since increasing Z decreases α_{ov} , as shown in Briquet et al. (2007). Such values were also found in the modelling by Daszyńska-Daszkiewicz & Walczak (2009).

The inhibition of mixing as derived for V2052 Oph can be caused by processes that are able to damp differential rotation in the stellar radiation zone, i.e. either stochastically excited internal waves (e.g. Talon & Charbonnel 2005; Pantillon, Talon & Charbonnel 2007) or a magnetic field (e.g. Moss 1992). The relative size of the convective core of the two stars is similar: 12.5% of the total radius for V2052 Oph and 13.5% for θ Oph. Therefore, if internal waves transporting angular momentum are excited by the turbulent convection in the core, they are expected to have the same net effect in the two stars. V2052 Oph is known to be a magnetic star (Neiner et al. 2003) while θ Oph is not (Hubrig et al. 2006). V2052 Oph hosts a fossil magnetic field with B_{pol} of the order of 400 G (Neiner et al. 2012). Therefore, the presence of the magnetic field in V2052 Oph seems to be the most likely explanation for the low core overshooting parameter, which represents the non-standard mixing processes. We test below whether the observed field can be sufficient to inhibit mixing in V2052 Oph.

We first used the criterion from Eq. (3.6) in Zahn (2011), which is based on the equation of angular momentum transport taking into account the magnetic field derived

Table 5. Comparison of the parameters of V2052 Oph and θ Oph.

Parameter	θ Oph	V2052 Oph
T_{eff} (K)	22260 ± 280	22500 ± 1100
$\log g$ (dex)	3.95 ± 0.01	3.95 ± 0.02
M (M_{\odot})	8.2 ± 0.3	8.9 ± 0.7
X_c	0.38 ± 0.02	0.29 ± 0.04
Z	[0.009, 0.015]	[0.010, 0.016]
α_{ov}	0.44 ± 0.07	0.07 ± 0.08
v_{eq} (km s^{-1})	29 ± 7	73 ± 2
$\Omega/\Omega_{\text{crit}}$	0.09 ± 0.03	0.23 ± 0.01

The parameters for θ Oph are taken from Briquet et al. (2007).

by Mathis & Zahn (2005):

$$B_{\text{crit}}^2 = 4\pi\rho \frac{R^2\Omega}{t_{\text{AM}}}. \quad (2)$$

In this equation, we used the time already spent by V2052 Oph on the main sequence, its radius and mass, as well as the surface rotation velocity. We found that the mean critical field strength in the radiative zone for suppressing differential rotation in this star is $B_{\text{crit}} \sim 70$ G. According to the ratio (30) between internal and surface fields derived by Braithwaite (2008; see Fig. 8 therein), this corresponds to a critical field strength at the surface of $B_{\text{crit,surf}} = 2$ G. Although the Zahn criterion is an approximation and we took global parameter values in our numerical application, it provides a good idea that a very weak fossil magnetic field is enough to inhibit possible initial differential rotation and thus rotational mixing in V2052 Oph or similar early B stars. Thus the surface magnetic field of 400 G present in V2052 Oph is strong enough and V2052 Oph is rotating uniformly considering the approximations of the Zahn criterion.

We then considered the criterion from Eq. (22) defined by Spruit (1999), which provides the critical initial field strength above which the magnetic field remains non-axisymmetric and rotation becomes uniform:

$$B_1 = r(4\pi\rho)^{1/2} \left(\frac{\eta\Omega^2 q^2}{3r^2\pi^2} \right)^{1/3}. \quad (3)$$

In this equation we consider the radiative zone. From our CLÉS models we derived that this radiative zone encompasses 81% of the stellar mass and its average density is 0.07 g cm^{-3} . In addition, we assumed that the initial rotational velocity in the radiative zone is a few times the current surface rotation velocity. We used a magnetic diffusivity of 2×10^6 , typical of the radiative zone of a B2 star (Brun, private communication; see also Augustson, Brun & Toomre 2011) and a degree of differential rotation ($q \equiv r|\nabla\Omega|/\Omega$; Eq. (13) of Spruit 1999) equal to 1 following Spruit (1999). We obtain that the initial critical field is $B_{\text{crit,init}} \sim 430$ G. Using again the ratio provided by Braithwaite (2008), but this time between the radiative zone and the surface, i.e. typically a factor 10, the critical initial surface field is $B_{\text{crit,init,surf}} \sim 40$ G. The corresponding current critical surface field is below this value, because of dissipation caused by the ohmic diffusion and the uniform rotation state caused by the Lorentz torque. Again, the Spruit criterion is based on approximations. Nevertheless, it shows that the surface

magnetic field observed in V2052 Oph (400 G) is sufficient to explain the observed non-axisymmetric magnetic configuration and lack of mixing associated to uniform rotation.

More precise criteria extracted from detailed modelling, in particular taking into account the full coupled transport processes and the geometrical configuration (for example following Mathis & Zahn 2005; Spada, Lanzafame & Lanza 2010; Duez & Mathis 2010; Duez, Braithwaite & Mathis 2010), are required to determine more precisely the level of magnetic field necessary to inhibit mixing in B stars. Nevertheless, our first estimate with both criteria above confirm that it is probably the presence of a fossil magnetic field in V2052 Oph that reduces the core overshooting parameter, i.e. the amount of non-standard mixing processes.

As a consequence of our findings, the usual interpretation that rotational mixing is responsible for the N-enrichment observed in early B-type stars (Meynet et al. 2011) cannot be applied to V2052 Oph. Preliminary results of Bourge et al. (2007) showed that radiatively-driven microscopic diffusion may be an alternative explanation for this abundance peculiarity in V2052 Oph and other targets. Complete diffusion computations including radiative forces in β Cep-type stars, which are not yet available, should include magnetic fields as there seems to be a higher incidence of nitrogen overabundance in stars with a detected magnetic field of the same order (i.e. a few hundred Gauss) as the one detected in V2052 Oph (Morel et al. 2008).

7 CONCLUSIONS

Our study was based on extensive ground-based, high-resolution, high-S/N, multisite spectroscopic measurements spread over many years. Similar efforts were already performed for two other β Cep stars, ν Eri and 12 Lac, leading to around ten independent pulsation frequencies. For V2052 Oph, our campaign only led to the detection of three pulsation modes but, contrary to the two other cases, the rotation period is also found, which provides a strong additional constraint. The difficulty to detect more modes in V2052 Oph may be explained by lower amplitudes of the modes due to a higher rotation rate compared to the two other stars.

Comparing our identifications of the degrees of the modes with the ones coming from the photometry, we are confident that the dominant mode is radial while the two additional modes have $\ell=4$. Moreover, combining the outcome of the FPF method with that of our basic modelling, we conclude that the non-radial modes are prograde $(\ell, m)=(4, 2)$ or $(4, 3)$ components of two multiplets with $n=-2$ and $n=-3$. The surface equatorial rotational velocity was also deduced as $v_{\text{eq}}=73\pm 2 \text{ km s}^{-1}$.

The observation of three independent modes with constraints on their wavenumbers along with the rotation period was enough to deduce ranges for the mass ($M \in [8.2, 9.6] M_{\odot}$), central hydrogen abundance ($X_c \in [0.25, 0.32]$) and other parameters of V2052 Oph that are furthermore fully compatible with the spectroscopic T_{eff} and $\log g$, and with the inclination angle i determined from the modelling of the magnetic field. More importantly, we showed that only models with no or mild core overshooting could satisfactorily reproduce our observational properties.

We made a comparison with θ Oph because it is an asteroseismically modelled β Cep star having similar fundamental parameters as our object of interest. We would expect a larger core overshooting parameter value in the faster rotator but the contrary is found. It can be explained by the fact that V2052 Oph is a magnetic star while θ Oph is not. Indeed, using two approximate criteria, we showed that the magnetic field present in V2052 Oph is strong enough to inhibit non-standard mixing processes in its interior. In order to check if the internal rotation of V2052 Oph is indeed uniform or not, we would need additional constraints such as those obtained from a high-precision light curve as given by the CoRoT and Kepler satellites. Indeed, space-based photometry has already revealed many pulsation frequencies, even in objects that were thought to be monoprotic from the ground (Aerts et al. 2006; Degroote et al. 2009).

ACKNOWLEDGMENTS

GH would like to thank Michael Endl for his assistance during the observations which made them successful. CN and SM thank Jean-Paul Zahn for fruitful discussions. The research leading to these results has received funding from the European Research Council under the European Community's Seventh Framework Programme (FP7/20072013)/ERC grant agreement n°227224 (PROSPERITY). This work was also supported in part by PNPS (CNRS/INSU). TM acknowledges financial support from Belpo for contract PRODEX-GAIA DPAC. JE acknowledges financial support from UNAM, PAPITT project IN122409. GH's contribution to this work has been supported by the Austrian Fonds zur Förderung der wissenschaftlichen Forschung under grant R12-N02. KU acknowledges financial support by the Spanish National Plan of R&D for 2010, project AYA2010-17803.

REFERENCES

- Aerts C., Thoul A., Daszyńska J., Scuflaire R., Waelkens C., Dupret M.-A., Niemczura E., Noels A., 2003, *Science*, 300, 1926
- Aerts C. et al., 2006, *ApJ*, 642, 165
- Aerts C., Christensen-Dalsgaard J., Kurtz D.W., 2010, *Asteroseismology*, Springer
- Aerts C., Briquet M., Degroote P., Thoul A., van Hoolst T., 2011, *A&A*, 534, 98
- Alecian E. et al., 2011, *A&A*, 536, 6
- Asplund M., Grevesse N., Sauval A.J., Scatt P., 2009, *ARA&A*, 47, 481
- Augustson K.C., Brun A.S., Toomre J., 2011, *IAUS* 271, eds Brummell, Brun, Miesch & Ponty, p. 361
- Ausseloos M., Scuflaire R., Thoul A., Aerts C., 2004, *MNRAS*, 355, 352
- Ballot J., Lignières F., Reese D.R., Rieutord M., 2010, *A&A*, 518, 30
- Balona L.A. et al., 2011, *MNRAS*, 413, 2403
- Bourge P.-O., Théado S., Thoul A., 2007, *CoAst*, 150, 203
- Braithwaite J., 2008, *MNRAS*, 386, 1947
- Breger M. et al., 1993, *A&A*, 271, 482

- Briquet M., De Cat P., Aerts C., Scufflaire R., 2001, *A&A*, 380, 177
- Briquet M., Aerts C., 2003, *A&A*, 398, 687
- Briquet M., Aerts C., Lüftinger T., De Cat P., Piskunov N.E., Scufflaire R., 2004, *A&A*, 413, 273
- Briquet M., Lefever K., Uytterhoeven K., Aerts C., 2005, *MNRAS*, 362, 619
- Briquet M., Morel T., Thoul A., Scufflaire R., Miglio A., Montalbán J., Dupret M.-A., Aerts C., 2007, *MNRAS*, 381, 1482
- Briquet M. et al., 2009, *A&A*, 506, 269
- Briquet M. et al., 2011, *A&A*, 527, 112
- Browning M.K., Brun A.S., Toomre J., 2004, *ApJ*, 601, 512
- Butler K., Giddings J.R., 1985, in *Newsletter of Analysis of Astronomical Spectra*, No.9 (Univ. London)
- Cugier H., Dziembowski W.A., Pamyatnykh A.A., 1994, *A&A*, 291, 143
- Daszyńska-Daszkiewicz J., Walczak P., 2009, *MNRAS*, 398, 1961
- Degroote P. et al., 2009, *A&A*, 506, 111
- Degroote P. et al., 2010, *Nature*, 464, 259
- De Ridder J., Dupret M.-A., Neuforge C., Aerts C., 2002, *A&A*, 385, 572
- De Ridder J. et al., 2004, *MNRAS*, 351, 324
- Desmet M. et al., 2009, *MNRAS*, 396, 1460
- Duez V., Mathis S., 2010, *A&A*, 517, 58
- Duez V., Braithwaite J., Mathis S., 2010, *ApJ*, 724, 34
- Dupret M.-A., 2001, *A&A*, 366, 166
- Dupret M.-A., De Ridder J., Neuforge C., Aerts C., Scufflaire R., 2002, *A&A*, 385, 563
- Dupret M.-A. et al., 2004, *A&A*, 415, 251
- Dziembowski W.A., Pamyatnykh A.A., 2008, *MNRAS*, 385, 2061
- Giddings J. R., 1981, Ph.D. Thesis, University of London
- Handler G. et al., 2006, *MNRAS*, 365, 327
- Handler G. et al., 2009, *ApJ*, 698, 56
- Handler G. et al., 2012, *MNRAS*, in press (arXiv:1205.6401)
- Henrichs H.F. et al., 2000, in *Magnetic Fields of Chemically Peculiar and Related Stars*, ed. Y.V. Glagolevskij, & I.I. Romanyuk, Moscow, 57
- Heynderickx D., Waelkens C., Smeyers P., 1994, *A&AS*, 105, 447
- Hubeny I., Lanz T., 1995, *ApJ*, 439, 875
- Hubrig S., Briquet M., Schöller M., De Cat P., Mathys G., Aerts C., 2006, *MNRAS*, 369, 61
- Hubrig S., Ilyin I., Briquet M., Schöller M., González J.F., Nuñez N., De Cat P., Morel T., 2011, *A&A*, 531, 20
- Kubiak M., Seggewiss W., 1984, *Acta Astronomica*, 34, 41
- Kurucz R.L., 1979, *ApJS*, 40, 1
- Lee U., 1998, *ApJ*, 497, 912
- Lee U., 2012, *MNRAS*, 420, 2387
- Lovekin C., Goupil M.-J., 2010, *A&A*, 515, 58
- Maeder A., 2009, *Physics, Formation and Evolution of Rotating Stars*, *Astronomy and Astrophysics Library*, ISBN 978-3-540-76948-4, Springer Berlin Heidelberg
- Martins F., Escolano C., Wade G.A., Donati J.F., Bouret J.C., 2012, *A&A*, 538, 29
- Mathis S., Zahn J.-P., 2004, *A&A*, 425, 229
- Mathis S., Zahn J.-P., 2005, *A&A*, 440, 653
- Mathis S., 2010, *AN*, 331, 883
- Mazumdar A., Briquet M., Desmet M., Aerts C., 2006, *A&A*, 459, 589
- Meynet G., Eggenberger P., Maeder A., 2011, *A&A*, 525, 11
- Michaud G., Megessier C., Charland Y., 1981, *A&A*, 103, 244
- Montgomery M.H., O'Donoghue D., 1999, *DSSN*, 13, 28
- Morel T., Butler K., Aerts C., Neiner C., Briquet M., 2006, *A&A*, 457, 651
- Morel T., Butler K., 2008, *A&A*, 487, 307
- Morel T., 2009, *CoAst*, 158, 122
- Morel T., 2010, *Bull. Soc. Roy. Sciences Liège*, 80, 405
- Morton A.E., Hansen H.K., 1974, *PASP*, 86, 943
- Moss D., 1992, *MNRAS*, 257, 593
- Neiner C. et al., 2003, *A&A*, 411, 565
- Neiner C., Alecian E., Briquet M., Floquet M., Frémat Y., Martayan C., Thizy O., 2012, *A&A*, 537, 148
- Neiner C., Floquet M., Samadi R. et al., *A&A*, submitted
- Niemczura E., Daszyńska-Daszkiewicz J., 2005, *A&A*, 433, 659
- Nieva M.-F., Przybilla N., 2007, *A&A*, 467, 295
- Pamyatnykh A.A., Handler G., Dziembowski W.A., 2004, *MNRAS*, 350, 1022
- Pantillon F.P., Talon S., Charbonnel C., 2007, *A&A*, 474, 155
- Pápics P.I. et al., 2012, *A&A*, 542, 55
- Piskunov N.E., Rice J.B., 1993, *PASP*, 105, 1415
- Pollard K.R., Wright D.J., Zima W., Cottrell P.L., De Cat P., 2008, *CoAst*, 157, 118
- Puls J., Urbaneja M.A., Venero R., Repolust T., Springmann U., Jokuthy A., Mokiem M.R., 2005, *A&A*, 435, 669
- Reese D., Lignières F., Rieutord M., 2006, *A&A*, 455, 621
- Schrijvers C., Telting J.H., Aerts C., 2004, *A&A*, 416, 1069
- Scufflaire R., Théado S., Montalbán J., Miglio A., Bourge P.-O., Godart M., Thoul A., Noels A., 2008a, *Ap&SS*, 316, 83
- Scufflaire R., Montalbán J., Théado S., Bourge P.-O., Miglio A., Godart M., Thoul A., Noels A., 2008b, *Ap&SS*, 316, 149
- Shibahashi H., Aerts C., 2000, *ApJ*, 531, 143
- Shultz M., Wade G.A., Grunhut J., Bagnulo S., Landstreet J.D., Neiner C., Alecian E., Hanes D., 2012, *ApJ*, 750, 2
- Simón-Díaz S., 2010, *A&A*, 510, 22
- Spada F., Lanzafame A.C., Lanza A.F., 2010, *MNRAS*, 404, 641
- Spruit H.C., 1999, *A&A*, 349, 189
- Talon S., Charbonnel C., 2005, *A&A*, 440, 981
- Telting J.H., Aerts C., Mathias P., 1997, *A&A*, 322, 493
- Townsend R.H.D., 2005, *MNRAS*, 364, 573
- Uytterhoeven K., Briquet M., Aerts C., Telting J.H., Harmanec P., Lefever K., Cuypers J., 2005, *A&A*, 432, 955
- Vauclair S., Dolez N., Gough D.O., 1991, *A&A*, 252, 618
- Walczak P., Daszyńska-Daszkiewicz J., 2010, *AN*, 331, 1057
- Wolff S. C., Heasley J.N., 1985, *ApJ*, 292, 589
- Zahn J.-P., 2011, *IAUS 272*, eds Neiner, Wade, Meynet & Peters, p. 14
- Zdravkov T., Pamyatnykh A.A., 2009, *AIPC*, 1170, 388
- Zima W., 2006, *A&A*, 455, 227
- Zima W., 2008, *CoAst*, 157, 387