

PDF hosted at the Radboud Repository of the Radboud University Nijmegen

The following full text is a publisher's version.

For additional information about this publication click this link.

<http://hdl.handle.net/2066/91999>

Please be advised that this information was generated on 2017-12-06 and may be subject to change.

Leptin Signaling Modulates the Activity of Urocortin 1 Neurons in the Mouse Nonpreganglionic Edinger-Westphal Nucleus

Lu Xu, Wim J. J. M. Scheenen,* Rebecca L. Leshan,* Christa M. Patterson, Carol F. Elias, Sanne Bouwhuis, Eric Willem Roubos, Martin G. Myers, Jr. and Tamás Kozicz

Department of Cellular Animal Physiology (L.X., W.J.J.M.S., S.B., E.W.R., T.K.), Donders Institute for Brain, Cognition and Behaviour, Radboud University Nijmegen, 6500 GL Nijmegen, The Netherlands; Division of Metabolism (R.L.L., C.M.P., M.G.M.), Endocrinology and Diabetes, Department of Internal Medicine, University of Michigan, Ann Arbor, Michigan 48109; and Division of Hypothalamic Research (C.F.E.), Department of Internal Medicine, University of Texas Southwestern Medical Center, Dallas, Texas 75390

A recent study systematically characterized the distribution of the long form of the leptin receptor (LepRb) in the mouse brain and showed substantial LepRb mRNA expression in the nonpreganglionic Edinger-Westphal nucleus (npEW) in the rostroventral part of the midbrain. This nucleus hosts the majority of urocortin 1 (Ucn1) neurons in the rodent brain, and because Ucn1 is a potent satiety hormone and electrical lesioning of the npEW strongly decreases food intake, we have hypothesized a role of npEW-Ucn1 neurons in leptin-controlled food intake. Here, we show by immunohistochemistry that npEW-Ucn1 neurons in the mouse contain LepRb and respond to leptin administration with induction of the Janus kinase 2-signal transducer and activator of transcription 3 pathway, both *in vivo* and *in vitro*. Furthermore, systemic leptin administration increases the Ucn1 content of the npEW significantly, whereas in mice that lack LepRb (*db/db* mice), the npEW contains considerably reduced amount of Ucn1. Finally, we reveal by patch clamping of midbrain Ucn1 neurons that leptin administration reduces the electrical firing activity of the Ucn1 neurons. In conclusion, we provide ample evidence for leptin actions that go beyond leptin's well-known targets in the hypothalamus and propose that leptin can directly influence the activity of the midbrain Ucn1 neurons. (*Endocrinology* 152: 979–988, 2011)

Energy homeostasis requires tight regulation of food intake and fat storage (*e.g.* see Refs. 1–3). A very critical hormone is leptin, the product of *ob* gene and produced by adipocytes. It conveys information to the brain about the amount of peripherally stored fat (4). Leptin acts through the leptin receptor long form (LepRb), the product of *db* gene (5, 6), to activate the Janus kinase 2 (JAK2)-signal transducer and activator of transcription 3 (STAT3) pathway (7, 8). It has been primarily shown to act in the

hypothalamus, especially on the arcuate nucleus, and it plays a key role in the regulation of food intake and energy expenditure (9, 10). However, some evidence is appearing that leptin would also have direct effects on brain centers outside the hypothalamus. For example, LepRb expression has been shown in the cerebral cortex, hippocampus, midbrain, and brain stem (11). In a recent study, using a novel LepRb-internal ribosomal entry site (IRES)-Cre-enhanced yellow fluorescent protein-reporter mouse and *in*

ISSN Print 0013-7227 ISSN Online 1945-7170

Printed in U.S.A.

Copyright © 2011 by The Endocrine Society

doi: 10.1210/en.2010-1143 Received October 1, 2010. Accepted November 29, 2010.

First Published Online January 5, 2011

* W.J.J.M.S. and R.L.L. contributed equally to this work.

Abbreviations: ACSF, Artificial cerebral spinal fluid; CV, coefficient of variation; DEPC, diethylpyrocarbonate; EGFP, enhanced green fluorescent protein; EGFP-ir, EGFP-immunoreactive; GFAP, glial fibrillary acidic protein; icv, intracerebroventricular; IRES, internal ribosomal entry site; ISI, interspike interval; JAK2, Janus kinase 2; LepRb, leptin receptor long form; npEW, nonpreganglionic Edinger-Westphal nucleus; PFA, paraformaldehyde; pSTAT3, phosphorylation of STAT3; RNase, ribonuclease; SSC, sodium chloride/sodium citrate; SSD, specific immunoreactive signal density; STAT3, signal transducer and activator of transcription 3; Ucn1, urocortin 1; VTA, ventral tegmental area; WT, wild type.

situ hybridization, substantial amounts of LepRb expressions were found in extrahypothalamic brain areas in adult mice (12, 13), such as in the nonpreganglionic Edinger-Westphal nucleus (npEW) in the rostroventral part of the midbrain. This nucleus is of particular interest, because its electrical lesioning substantially decreased general food intake (14) and this nucleus is the major source of urocortin 1 (Ucn1), a member of the corticotropin releasing factor family that has strong anorexigenic actions (15–17).

Recently, we showed that the rat npEW reveals substantial LepRb mRNA expression and responds to fasting (18). Moreover, the npEW of rats fed a high-fat diet showed a decrease in Ucn1 mRNA expression (19). In addition, peripheral injection of low doses of Ucn1 produces strong and prolonged inhibition of food intake (20, 21), an effect that can also be seen in leptin-deficient (*ob/ob*) mice (22). Intracerebroventricular (icv) administration of Ucn1 also potently reduces food intake in food-deprived rats (23), an action most probably mediated by the ventromedial hypothalamic nucleus (24).

The colocalization of LepRb and Ucn1 in npEW neurons is interesting, because a number of experimental studies have shown the interactions of leptin and Ucn1 on food intake: 1) the satiety effect of Ucn1 is enhanced by its own ability to induce plasma leptin (25), 2) cotreatment with doses of leptin and Ucn1 that are ineffective while given alone effectively suppresses appetite (26), 3) leptin facilitates Ucn1 transport across the blood-brain barrier (27), and 4) Ucn1 seems to potentiate leptin signaling by leptin receptor-mediated STAT3 phosphorylation (27).

Although these data taken together indicate that the collaboration of peripheral leptin signaling and Ucn1 in the npEW may play an important role in regulating feeding behavior, the mechanism by which leptin would influence the activity of the npEW-Ucn1 neurons is unclear. Here, we hypothesize that in mouse, leptin-mediated signaling occurs in Ucn1 neurons in the npEW and that modulation of leptin signaling can modify Ucn1 neuron activity.

Materials and Methods

Animals

Male C57BL/6J, B6.Cg-m+/+Lepr^{db}/J (db/db), and LepRb^{EGFP} mice were used. *In vivo* experiments were performed with young-adult mice (10–12 wk old; obtained from The Jackson Laboratory, Bar Harbor, ME) and housed in the University of Texas Southwestern Medical Center at Dallas (*in situ* hybridization) or in the Unit for Laboratory Animal Medicine at the University of Michigan (immunohistochemistry) in groups of two to four unless stated otherwise. *In vitro* studies were performed with wild-type (WT) C57BL/6J pups (16–21 d old), housed with their mother, who was obtained from Janvier (Le-

Genest-St-Isle, France), in the Central Animal Laboratory at Radboud University Nijmegen. They were all housed at a 12-h light, 12-h dark cycle (lights on at 0600 h) in a humidity- and temperature (22 C)-controlled environment and had access to food and water *ad libitum*. All animal procedures had the approval of the respective University care and use committees.

Production of LepRb^{EGFP} mice

To identify LepRb-expressing neurons, *Lepr^{cre}* mice were crossed with *Rosa^{EGFP}* reporter mice to produce *LepRb^{EGFP}* offspring with enhanced green fluorescent protein (EGFP) expressed in LepRb neurons. Briefly, in *Lepr^{cre}* mice, an IRES-driven second cistron encoding cre recombinase is “knocked in” to the 3'-untranslated region of the LepRb-specific exon of *Lepr*, rendering the cre-coding sequence part of the LepRb-specific mRNA such that its expression is restricted to LepRb-expressing neurons (28). The *Gt(ROSA)26Sor^{tm2Sho}* (*Rosa^{EGFP}*) line from The Jackson Laboratory has been engineered such that cre-mediated deletion of a floxed transcription-blocking cassette results in the expression of EGFP from the ubiquitously expressed *Rosa26* locus (29). Because IRES-mediated cre expression is modest, mice were bred to homozygosity (*Lepr^{cre/cre}*, *Rosa^{EGFP/EGFP}*) to enhance the detection of LepRb neurons by EGFP expression. All matings were carried out in the University of Michigan Unit for Laboratory Animal Medicine.

Peptide and antisera

Recombinant mouse leptin was obtained from the National Hormone and Peptide Program (A. F. Parlow, Los Angeles, CA), rabbit anti-Ucn1 was a generous gift from W. W. Vale (no. 5779; The Salk Institute, La Jolla, CA), chicken anti-EGFP (no. 13970) was from Abcam (Cambridge, MA), rabbit antiphosphorylation of STAT3 (pSTAT3) (no. 9131) from Cell Signaling Technology (Danvers, MA), mouse antiglial fibrillary acidic protein (GFAP) (no. GA-5) from ICN Biomedicals (Irvine, CA), goat anti-Ucn1 (no. sc-1825) from Santa Cruz Biotechnology, Inc. (Santa Cruz, CA), and Alexa 488-conjugated goat antichick and Alexa 594-conjugated donkey antirabbit from Invitrogen (Carlsbad, CA). Normal donkey serum and the Cy²-conjugated donkey-antichick, Cy²-conjugated donkey-antigoat, Cy³-conjugated donkey-antirabbit, and Cy⁵-conjugated donkey-antimouse sera were from Jackson ImmunoResearch (West Grove, PA). All other immunolabeling supplies were purchased from Sigma Chemical (St. Louis, MO).

Tissue preparations

In vivo study with in situ hybridization (LepRb mRNA)

Four C57BL/6J male mice were deeply anesthetized with an ip injection of chloral hydrate (350 mg/kg) and perfused transcardially with diethylpyrocarbonate (DEPC)-treated 0.9% saline followed by 10% neutral buffered formalin. After decapitation, brains were removed, postfixed in 10% neutral buffered formalin for 4 h at 4 C, cryoprotected in 20% sucrose in DEPC-treated PBS (pH 7.0) overnight at 4 C, and cut coronally into five equal series of 25- μ m sections on a freezing microtome, which were stored at -20 C in antifreeze solution (30) until processing for radioactive *in situ* hybridization.

In vivo studies with immunohistochemistry

The untreated LepRb^{EGFP} mice were used to demonstrate LepRb protein. To study the effect of leptin on Ucn1 in the

npEW, 16 LepRb^{EGFP} mice were single housed and injected ip with either leptin (5 mg/kg) or equal volume vehicle (sterile PBS, pH 7.4) and killed 2 or 4 h later. To assess the effect of disrupted leptin signaling on the npEW, five db/db and five WT mice were studied. All mice were deeply anesthetized with ip sodium pentobarbital (150 mg/kg), transcardially perfused with ice-cold PBS followed by 4% paraformaldehyde (PFA), for 30 min, decapitated, and brains removed and postfixed in 4% PFA (31), for 16 h. Four representative series of coronal sections (30 μ m) were cut with a sliding microtome, into a cryoprotective solution (30% ethylene glycol, 30% glycerol; in PBS), and stored at -20°C until use for immunohistochemistry.

In vitro brain-slice study with immunohistochemistry

Twelve C57BL/6J pups were decapitated, their brains were quickly removed and placed into ice-cold slicing medium containing 83.5 mM NaCl, 30 mM KCl, 1.3 mM KH_2PO_4 , 1.2 mM MgCl_2 , 2.4 mM CaCl_2 , 2.6 mM NaHCO_3 , 2.5 mM glucose, and 1.0 mM HEPES (pH 7.4) (Merck Chemical, Darmstadt, Germany). The olfactory bulb and cerebellum were removed, and the remaining tissue was glued onto the holding block of a slicing chamber with the cerebellum side pointing upward, flooded with the slicing medium, and 300- μ m coronal slices containing the npEW (between Bregma -3.2 and -3.6 mm) (32) cut with a VT1000S vibratome (Leica Microsystems, Wetzlar, Germany) and kept submerged on a grid in room temperature artificial cerebral spinal fluid (ACSF) containing 120 mM NaCl, 2.5 mM NaHCO_3 , 3.5 mM KCl, 1.25 mM NaH_2PO_4 , 1.3 mM MgSO_4 , 2.5 mM glucose, and 2.5 mM CaCl_2 (pH 7.4). Slices were incubated with ACSF (controls) or with ACSF + 100 nM leptin, for 30 min at 35°C . Then they were fixed in 4% PFA, for 2 d at 4°C , and 10 25- μ m coronal sections at the midlevel of the npEW were cut on the freezing microtome (Microm GmbH, Walldorf, Germany) for immunohistochemistry.

In situ hybridization

The *in situ* hybridization procedure was a modification of that previously reported (11, 12). In short, sections were rinsed with DEPC-PBS, for 1 h, and treated with 1% sodium borohydride (Sigma Chemical) in DEPC-PBS, for 15 min, briefly rinsed in 0.1 M tetrachlorammonium (pH 8.0), treated with 0.25% acetic anhydride in 0.1 M tetrachlorammonium, for 10 min, and rinsed in DEPC-treated $2\times$ sodium chloride/sodium citrate (SSC). Sections were incubated for 16 h at 57°C , with LepR riboprobes, generated by *in vitro* transcription using ^{35}S -labeled uridine triphosphate as previously described (12) and diluted to 10^6 cpm/ml in a solution containing 50% formamide, 10 mM Tris-HCl (pH 8.0) (Life Technologies, Inc.-BRL, Bethesda, MD), 5 mg tRNA (Invitrogen), 10 mM dithiothreitol, 10% dextran sulfate, 0.3 M NaCl, 1 mM EDTA (pH 8.0), and $1\times$ Denhardt's solution (Sigma Chemical). Then they were rinsed four times in $4\times$ SSC, and incubated in 0.002% ribonuclease (RNase) A (Roche Applied Bioscience, Indianapolis, IN) diluted in a mixture of 0.5 M NaCl, 10 mM Tris-HCl (pH 8.0) and 1 mM EDTA (RNase buffer), for 30 min at 37°C . After another 30 min in RNase buffer and two rinses at room temperature in $2\times$ SSC, the sections were rinsed three times in $50\times$ SSC, for 10 min at 50°C , and rinsed $2\times$ SSC at 50°C , $0.2\times$ SSC at 55°C , and $0.2\times$ SSC at 60°C , each rinse for 1 h. After rinsing twice in $2\times$ SSC at room temperature, sections were mounted on SuperFrost Plus slides (Fisher, Pittsburgh, PA), dehydrated in a

graded ethanol series, and delipidated in chloroform. After rinses in 100 and 95% ethanol, slides were air-dried and placed in x-ray film cassettes with BMR-2 film (Kodak, Rochester, NY), for 2 d. Next, they were dipped in NTB2 emulsion (Kodak), air-dried, and stored in light-tight boxes at 4°C for 4 wk. Slides were developed with Kodak Dd-19 developer, counterstained with thionin, dehydrated in ethanol, cleared in xylene, and mounted with Permaslip. The high specificity of the probes has been shown before (12).

Immunohistochemistry

Single immunolabeling of EGFP was performed on the non-treated LepRb^{EGFP} mice. Single immunolabeling of Ucn1 was performed on the PBS/leptin injected LepRb^{EGFP} mice (4 h) and WT and db/db mice. Sections were treated with 0.5% Triton X-100 in PBS, for 30 min, blocked in 2% normal donkey serum, for 1 h, and incubated in primary chicken anti-EGFP (1:1000), goat anti-Ucn1 (1:100; PBS/leptin injected mice, 4 h), or rabbit anti-Ucn1 sera (1:30,000; WT and db/db mice) overnight. This was followed by a 2-h incubation with the secondary antibodies Alexa 488-conjugated goat antichick (1:200), Cy2-conjugated antigoat IgG (1:100), or Cy3-conjugated antirabbit IgG (1:100).

Double immunolabeling of EGFP with Ucn1 or with pSTAT3 was performed on control or PBS/leptin-injected LepRb^{EGFP} mice (2 h), respectively. For double immunolabeling of EGFP and Ucn1, sections were processed as described for single immunolabeling but with incubation in a mixture of the chicken anti-EGFP (1:2000) and rabbit anti-Ucn1 sera (1:30,000), for 16 h, and then in a mixture of Cy2-conjugated antichick IgG and Cy3-conjugated antirabbit IgG (1:100), for 2 h. For double immunolabeling of EGFP and pSTAT3, sections were pretreated sequentially in 3% H_2O_2 and 1% NaOH, for 20 min, 0.3% glycine, for 10 min, and 0.03% sodium dodecyl sulfate, for 10 min, and processed as described above, with chicken anti-EGFP (1:1000) and rabbit anti-pSTAT3 (1:500) sera for 16 h, and Alexa 488-conjugated goat antichick (1:200) and Alexa 594-conjugated donkey antirabbit sera, respectively, for 2 h (1:200).

Triple immunolabeling of Ucn1, pSTAT3, and GFAP was performed on *in vitro* brain slices. The same protocol for pSTAT3 immunohistochemistry was applied, with incubation in goat anti-Ucn1 (1:100), rabbit anti-pSTAT3 (1:400), and monoclonal mouse anti-GFAP (1:100) sera, for 16 h, and then in a mixture of Cy2-conjugated antigoat IgG, Cy3-conjugated antirabbit IgG, and Cy5-conjugated antimouse IgG (1:100) sera, respectively, for 2 h.

Antibody characterization

The high specificities of chicken anti-EGFP (8, 19, 28), mouse anti-GFAP (33), rabbit anti-pSTAT3 (12, 34), goat anti-Ucn1 (35, 36), and rabbit anti-Ucn1 (19, 36, 37) have been previously reported. In addition, preabsorption of antibodies with the respective synthetic peptides abolished immunostaining in the mouse npEW, and omission of primary antisera completely prevented immunoreaction in all cases.

Image analysis

Immunostainings were studied with a BX-51 bright field microscope with DP30BW camera (Olympus, Tokyo, Japan) or a confocal laser scanning microscopy (Leica Microsystems TCS SP2 AOBS system). For quantitative determinations of the amounts of immunoreactive peptide in the npEW, two param-

eters were determined: 1) the number of neuronal perikarya was counted in four medial sections of the npEW, and 2) per perikaryon, the specific immunoreactive signal density (SSD) was measured in each of all perikarya present in these sections, using ImageJ software (version 1.37; NIH, Bethesda, MD). Data were corrected for background density outside the npEW, yielding the SSD expressed in arbitrary units per perikaryon.

Electrophysiology

Brain slices of WT C57BL/6J pups (thickness, 300 μm) made as described above were incubated in ACSF, at 37 C for 30 min, and then stored 2–4 h at room temperature until use. Neurons in the npEW, 100–300 μm ventral to the periaqueductal gray, were studied in the cell-attached patch-clamp mode, using an EPC-9 patch-clamp amplifier with patchMaster software version 2.20 (HEKA, Lambrecht/Pfaltz, Germany). Data were recorded at 10 kHz and filtered using a 12.9-kHz Bessel filter. Patch pipettes with a resistance between 4 and 6 M Ω were pulled from Wiretrol II glass capillaries (Drummond Scientific Co., Broomall, PA) with a PP-83 pipette puller (Narishige Scientific Instrument Laboratories, Tokyo, Japan). All solutions were continuously carbogenized (5% CO₂-95% O₂), and the temperature of the superfusate was controlled with an SH-27B in-line temperature heater coupled to a TC-324B single channel heater controller (Harvard Apparatus, Holliston, MA). Electrical activity was recorded in the cell-attached patch voltage-clamp mode at 0 mV pipette potential (38). Performing measurements in cell-attached mode preserved the cytoplasm, and in this configuration, spontaneous firing activity was observed. Cell firing activity was recorded in the form of action potential currents, which are the first derivatives of action potentials and are mainly due to the capacitive current (39). During recording, cells were incubated in

ACSF, followed by ACSF containing 100 nM leptin, and finally in ACSF to washout leptin. During each incubation, which lasted 3 min, the interspike interval (ISI), *i.e.* the time between two successive action currents, was averaged over all currents measured. The coefficient of variation (CV) was calculated as SD/mean of ISI, according to Yang *et al.* (38).

Statistical analyses

Per experimental group, data were expressed as the mean \pm SEM and entered in Student's *t* test after tests for normality (Shapiro-Wilk test; see Ref. 40) and homogeneity of variance (Bartlett's χ^2 test; 41) ($\alpha = 5\%$).

Results

Expression of LepRb in npEW-Ucn1 neurons

First, we used *in situ* hybridization to study the presence of LepRb mRNA in C57BL/6J mice. Sections of the midbrain were hybridized with a long-form specific antisense LepRb probe. In the npEW, neuronal perikarya revealed substantial labeling (Fig. 1A). No staining was seen in the npEW when the sense LepRb probe was used (data not shown). Next, we applied single-labeling immunofluorescence histochemistry to show the presence of LepRb protein in LepRb^{EGFP} mice (Fig. 1E). They revealed an almost continuous, boomerang-shaped population of EGFP-immunoreactive (EGFP-ir) neurons in the midbrain, starting dorsomedially in the npEW, continuing through the rostral linear raphe and ventral teg-

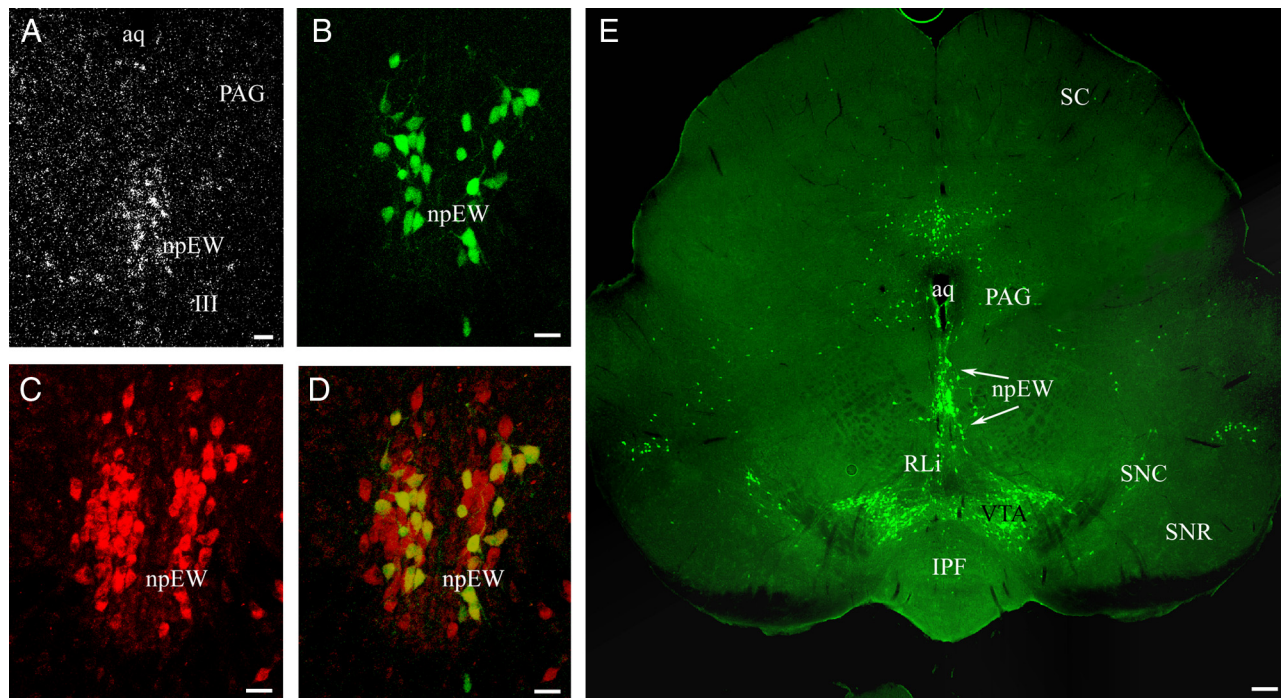


FIG. 1. Visualization of midbrain LepRb neurons. A, LepRb mRNA is present in the npEW by radioactive *in situ* hybridization. E, LepRb-expressing neurons are revealed by EGFP-ir (green) in the midbrain of LepRb^{EGFP} mice. B–D, EGFP-ir (green) (B) neurons are colocalized (yellow) (D) with Ucn1-ir (red) (C) in the npEW of LepRb^{EGFP} mice. Scale bar, 20 μm (A–D) and 100 μm (E). Aq, Central aqueduct; III, nucleus of oculomotor nerve; IPF, fasciculus interpeduncularis; PAG, periaqueductal gray; RLi, rostral linear nucleus; SC, colliculus superior; SNC, substantia nigra pars compacta; SNR, substantia nigra reticular part.

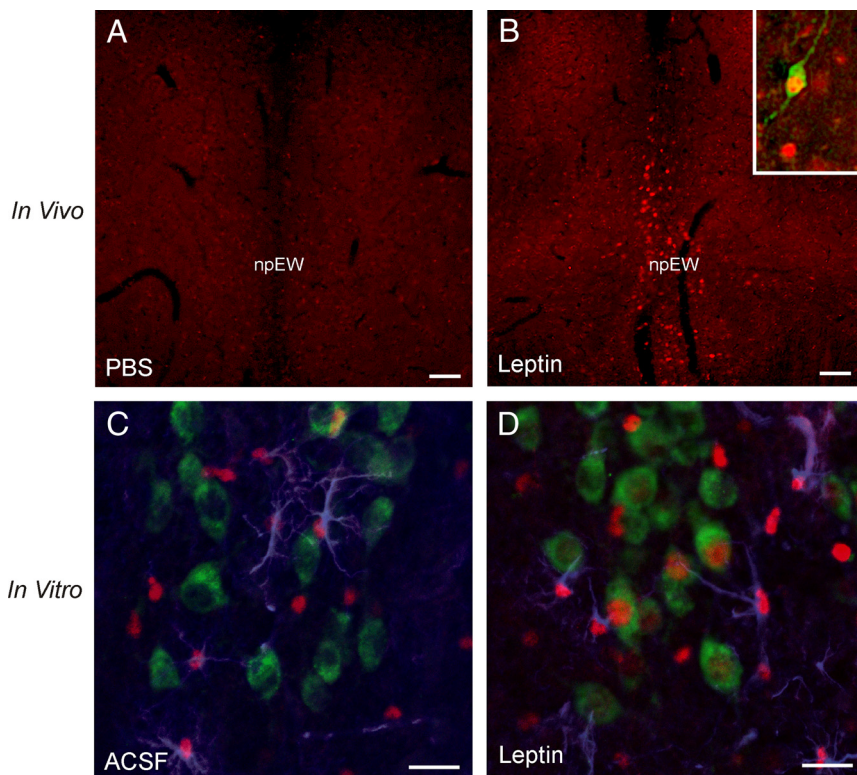


FIG. 2. Increased STAT3 phosphorylation (pSTAT3) by leptin both *in vivo* and *in vitro*. A and B, *In vivo*, systemic leptin administration (5 mg/kg ip, 2 h) of LepRb^{EGFP} mice induces pSTAT3-ir (red) in the npEW compared with PBS injection. The inset shows a high magnification of colocalization of EGFP-ir (green) and nuclear pSTAT3-ir (red). C and D, *In vitro*, incubation with ACSF on midbrain slices, pSTAT3-ir (red) is observed in GFAP-ir (blue) astrocytes (C); incubation with leptin induces pSTAT3-ir (red) not only in GFAP-ir (blue) astrocytes but also in the Ucn1-ir (green) neurons (D). Scale bar, 20 μ m.

mental area (VTA), and terminating with a few scattered neurons in the substantia nigra pars compacta. Using double-labeling immunofluorescence, we showed in npEW neurons the coexistence of EGFP-ir with Ucn1-ir (Fig. 1, B–D). Nearly all (>90%) EGFP-ir neurons revealed Ucn1-ir, whereas about 45% of the Ucn1-ir neurons were EGFP-ir (Fig. 1D). None of the EGFP-positive neurons in the linear raphe, VTA, and substantia nigra pars compacta showed Ucn1-ir (data not shown). One limitation of the genetic model used in this study is that not all of the LepRb neurons will exhibit EGFP-ir, because only a subpopulation of LepRb neurons expresses EGFP-ir (19, 42).

LepRb signaling increases STAT3 phosphorylation

To assess whether LepRb in the npEW is functional, the JAK2-STAT3 pathway was evaluated. This signaling pathway is induced when leptin binds to LepRb, resulting in pSTAT3. Subsequently, the pSTAT3 is translocated into the nucleus to mediate gene transcription (43, 44). To determine whether leptin stimulates pSTAT3 in the npEW *in vivo*, LepRb^{EGFP} mice were ip injected with PBS or leptin. Immunohistochemistry revealed no staining of pSTAT3-ir anywhere in the midbrain 2 h after PBS injection

(Fig. 2A). However, 2 h after leptin administration, clear pSTAT3-ir was seen to be colocalized with the EGFP-ir neurons in the npEW (Fig. 2B). To assess whether this stimulatory effect would be due to a direct action of leptin on the npEW, brain slices containing the npEW were incubated *in vitro* with leptin. In fresh, control slices, incubated in ACSF, pSTAT3-ir was seen throughout the tissue in GFAP-ir astrocytes. This was not surprising, because the mere preparation of brain slices is sufficient to induce the JAK2-STAT3 pathway in astrocytes (42). Such fresh slices never revealed any pSTAT3-ir in neurons, including the Ucn1-ir neurons in the npEW (Fig. 2C). However, in slices incubated for 30 min with ACSF + 100 nM leptin, pSTAT3-ir was not only observed in GFAP-ir astrocytes but also in about 40% of the Ucn1-ir neurons, which revealed strong labeling of nucleus (triple labeling; Fig. 2D).

Leptin changes Ucn1 peptide content in npEW neurons

Studying the effect of leptin on the degree of Ucn1-ir of the npEW of C57BL/6J mice by semiquantitative immunohistochemistry revealed that, in leptin-injected mice, the number of Ucn1-ir cells was not different from that in PBS-injected controls ($P > 0.05$; $n = 5$; PBS, 31.9 ± 1.8 ; Leptin, 28.6 ± 2.4). However, the abundance of Ucn1-ir per individual perikaryon, as assessed by measuring the SSD, was significantly higher in leptin-injected mice than in the controls ($P < 0.05$; $n = 5$) (Fig. 3, A, B, E, and F). Next, we performed the same experiment with db/db mice and their control littermates (WT). In the db/db mice, the number of npEW-Ucn1-ir neurons and the SSD of Ucn1-ir were significantly lower ($P < 0.0005$ and $P < 0.005$; $n = 5$, respectively) than in WT (Fig. 3, C, D, G, and H).

Leptin inhibits electrical activity of Ucn1 neurons

To determine the effect of leptin on electrical activity of Ucn1-neurons in the npEW, cell-attached voltage-clamp patch-clamp measurements were performed on brain slices of C57BL/6J pups. All recorded neurons ($n = 11$) spontaneously displayed action current firing, with an ISI of 0.37 ± 0.08 sec (Fig. 4, A–C). When ACSF + 100 nM leptin was used as superfusate, cells showed a reduction in action current frequency (Fig. 4, A–C), reflected by an

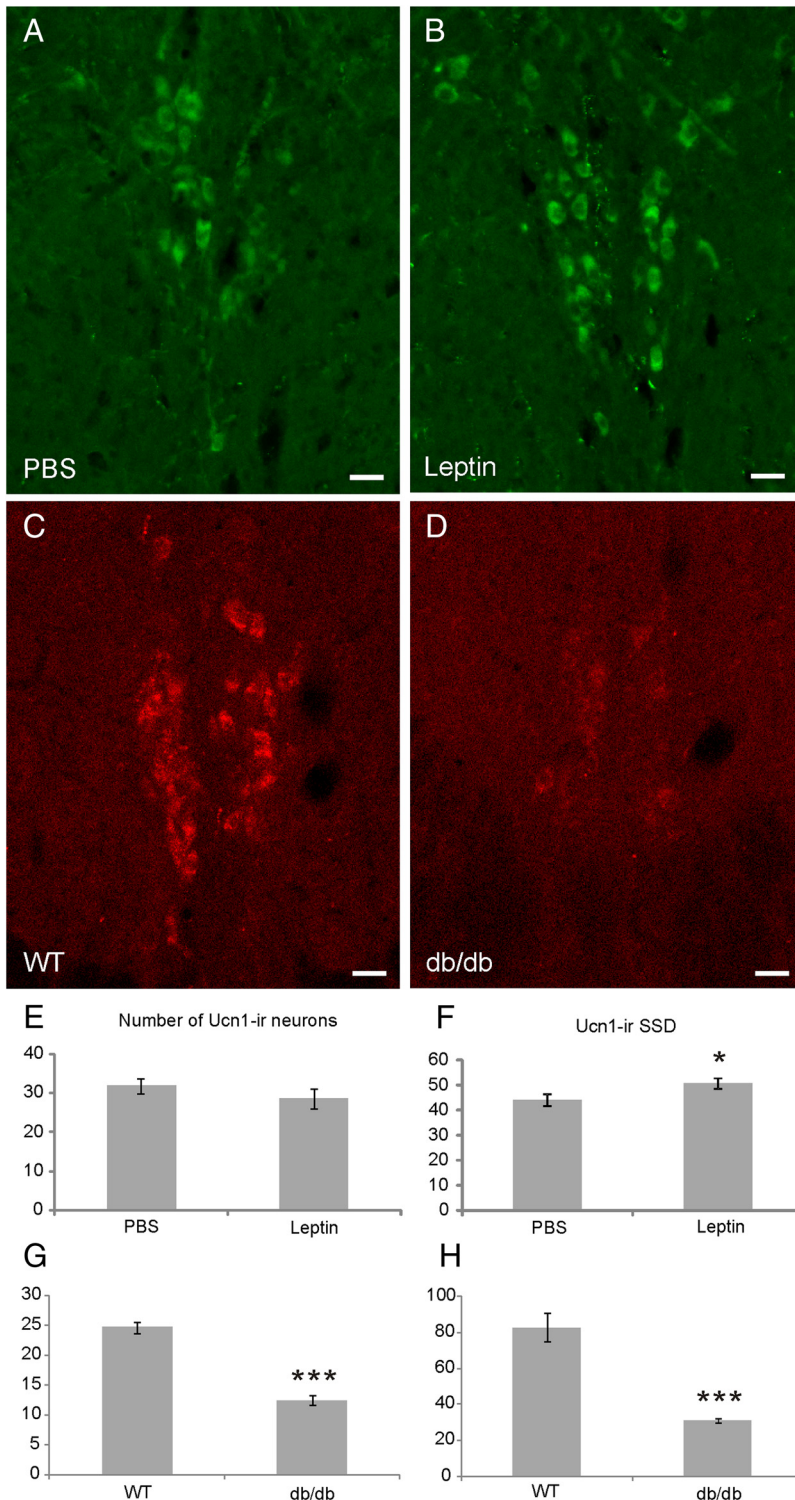


FIG. 3. Regulation of Ucn1 content in the npEW by increased and disrupted leptin signaling. A and B, Fluorescent immunohistochemistry reveals Ucn1-ir (green) in the npEW in PBS and leptin injected mice ($n = 5$). E and F, Systemic leptin administration (5 mg/kg ip, 4 h) of LepRb^{EGFP} mice increases SSD of Ucn1-ir significantly (F) but not the number of Ucn1-ir neurons (E). C and D, Fluorescent immunohistochemistry reveals Ucn1-ir (red) in the npEW in WT and db/db mice ($n = 5$). G and H, Both the number and SSD of Ucn1-ir neurons are decreased significantly in db/db mice compared with WT. Scale bar, 20 μ m. *, $P < 0.05$; ***, $P < 0.005$.

increase in the ISI by 32.9% ($P < 0.01$; $n = 11$) (Fig. 4, A–C). In the majority of cells ($n = 9$), this effect was reversible upon washing out leptin, returning the ISI to con-

trol value (0.39 ± 0.07 sec; $P < 0.05$) (Fig. 4, A–C). To test the possibility that leptin regulates the electrical activity of npEW-LepRb neurons (see *Discussion*), we performed patch-clamp electrophysiology in acute brain slices with direct leptin administration. Our data demonstrates that leptin inhibits the neurons' electrical activity in approximately 80% of patched neurons. Of two cells only, the leptin-effect could not be reversed by leptin washout. In contrast to its effect on the ISI, leptin did never affect the CV ($P > 0.05$; $n = 11$) (Fig. 4D). The recorded cells likely represent Ucn1 producing neurons, because the immunohistochemistry data show that approximately 90% of EGFP neurons are Ucn1 neurons.

Discussion

Based on the expression of LepRb in the npEW (12, 13, 18), we hypothesized that the peripheral metabolic status would directly modulate the activity of the npEW via an action of leptin on LepRb of npEW-Ucn1 neurons by recruiting JAK-STAT signaling. Our findings on the mouse npEW support this hypothesis, for the following reasons: 1) LepRb is present in the npEW, and nearly all LepRb-containing neurons produce Ucn1; 2) administration of leptin either peripherally *in vivo* or directly onto the npEW *in vitro* causes pSTAT3 in npEW-Ucn1 neurons; 3) leptin administration significantly increases the abundance of Ucn1 in npEW-neurons; 4) LepRb-deficient (db/db) mice contain considerably less Ucn1 than WT mice; and 5) leptin acutely reduces the electrical activity of npEW-Ucn1 neurons. Together, the present results reveal that leptin directly targets npEW-Ucn1 neurons to modulate the activity of these neurons, at both the short-term (electrical response of Ucn1 neurons) and long-term (abundance of Ucn1 peptide in npEW neurons) level. Below, we will discuss these conclusions into detail.

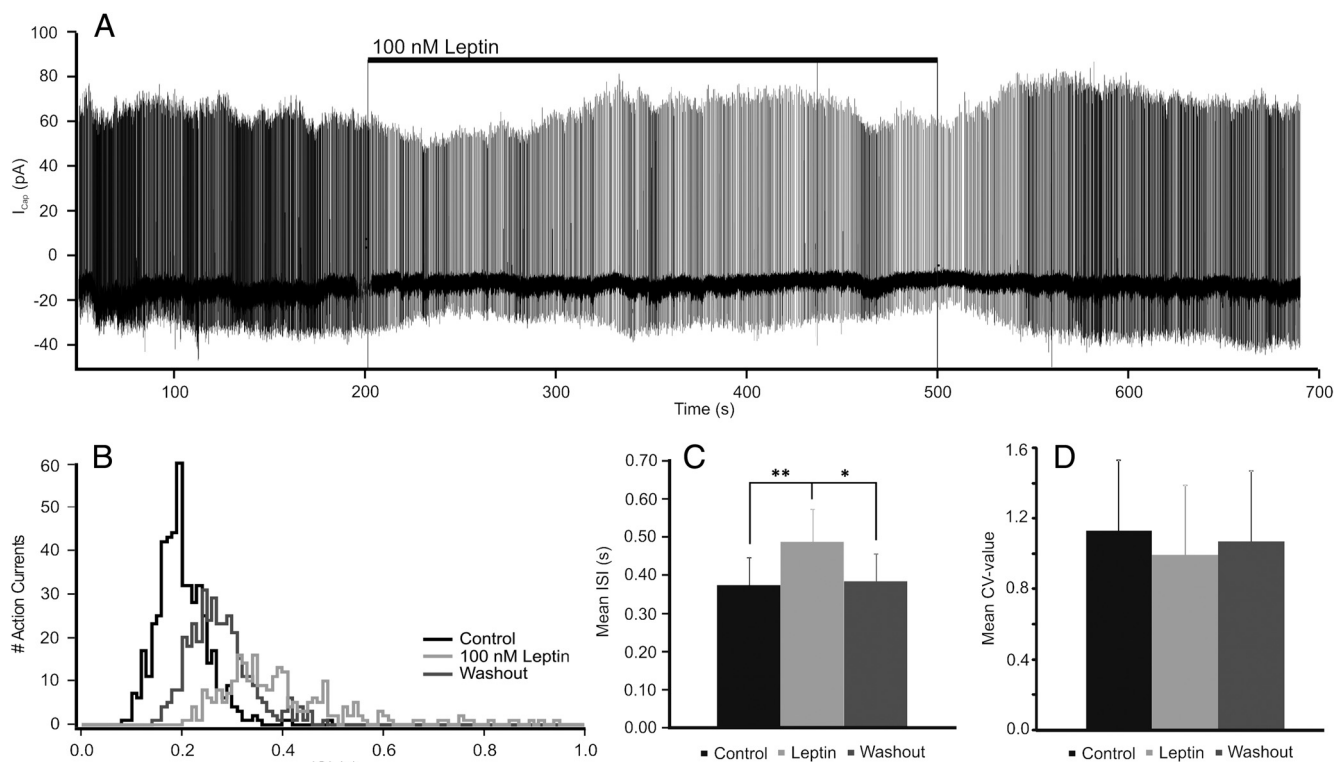


FIG. 4. Cell-attached patch-clamp recordings from the npEW neurons in voltage-clamp mode. A, Example of one neuron responding to leptin and washout. B, Number of action current firing plotted with ISI of the neuron shown in A. C, Mean ISI increased by leptin application and reversed by washout. D, The CV-value is not affected by leptin treatment. *, $P < 0.05$; **, $P < 0.01$.

LepRb occurs in npEW-Ucn1 neurons

First, we demonstrated the production of LepRb by npEW neurons by showing the expression of LepRb mRNA with *in situ* hybridization, which is in agreement with two recent, independent studies (12, 13). Next, we detected the LepRb by applying immunohistochemistry to a reporter mouse strain (LepRb^{EGFP} mice) (19, 28, 45). Our finding that EGFP-labeled LepRb neurons occur in a characteristic, homogeneous, boomerang-shaped mid-brain population of neurons, encompassing not only the npEW but also the rostral linear raphe, the VTA, and the substantia nigra pars compacta, is interesting, because these anatomically distinct neuronal subgroups all originate from the midbrain floor plate (46). This shared phenotype and common origin of these midbrain nuclei suggest an important coordinating role for leptin in the midbrain. Although leptin's action on VTA (47, 48) is well documented, little is known about the hormone's action on other midbrain LepRb expressing neurons and more in particular on LepRb expressing neurons in the npEW. Therefore, and in view of the dominant presence of Ucn1 in the npEW, we tested whether leptin would act on Ucn1 dynamics in this nucleus and found that almost all npEW-neurons that contain the LepRb also contain Ucn1 and that, conversely, 45% of Ucn1 neurons in the npEW produce LepRb. This situation is similar to that for other brain

centers that are under physiological control by leptin. For example, 47% of the NPY-neurons in the arcuate nucleus and 60% of the dopaminergic neurons in the VTA express LepRb mRNA (47, 49). This analogy supports the general notion that even though brain centers may be anatomically distinctly structured, they may have many different functions, some of which are associated with similar functions of other brain centers, in this way establishing networks of collaborating neurons that serve the coordination of the various central regulations necessary to maintain physiological homeostasis.

Leptin recruits pSTAT3 in npEW neurons

In view of the capability of leptin to cross the blood-brain barrier in most parts of the brain (including the mid-brain) (50) and the presence of leptin receptors throughout the brain (11–13), we tested whether leptin, by binding to LepRb, would be able to induce direct response on the npEW-Ucn1 neurons or whether additional input to these neurons from remote brain centers would be necessary for such leptin-mediated activation. For this purpose, we deprived the npEW from peripheral nervous input, by dissecting it out as a thin brain slice that was kept *in vitro* and treated with leptin. STAT3-tyrosine phosphorylation was used as a read-out parameter for npEW-Ucn1 neuron signal, because it represents response of the common leptin-

signaling JAK-STAT pathway (7, 8, 31). Because we showed that acute leptin administration to such brain slices induced within 30 min STAT3 phosphorylation in many npEW-Ucn1-ir neurons, we conclude that leptin is indeed able to activate these neurons directly, without the support of neuronal input from remote brain centers. This finding is likely relevant for the *in vivo* situation as well, because we also found that systemic administration of leptin induces pSTAT3 in npEW-LepRb neurons. Our observation of leptin-induced recruitment of Ucn1 neurons in the npEW extends the recent report on leptin-induction of STAT3 phosphorylation in mouse npEW neurons (13). Because the JAK-STAT signaling pathway is a major signaling alternative to the second messenger system and transduces external neurochemical information to gene promoters on nuclear DNA (8), our data indicate that leptin may be involved in the control of (possibly *Ucn1*) gene expression and/or Ucn1 biosynthesis.

Leptin regulates npEW Ucn1 production

Although the administration of exogenous leptin often evokes only modest effects in normal animals, deficiency in leptin signaling (*e.g.* lack of leptin receptor) promotes marked alterations in neuronal function and mammalian physiology. We show that peripheral injection of leptin increases the abundance of Ucn1 within the npEW-Ucn1 neurons, whereas in db/db mice, the abundance was strongly decreased. These results clearly show that leptin regulates the Ucn1 content in npEW neurons and suggest that although short-term action of leptin (as mimicked by our injection study) evokes a moderate increase in cellular Ucn1 content, long-term absence of leptin signaling (as occurs in db/db mice) leads to a profound decrease in Ucn1 in the npEW.

Leptin inhibits electrical activity of npEW neurons

To test the possibility that leptin regulates the electrical activity of npEW-LepRb neurons, we performed patch-clamp electrophysiology in acute brain slices with direct leptin administration. Our data demonstrates that leptin inhibits the neurons' electrical activity in approximately 80% of patched neurons. This finding is consistent with the described action of leptin on the electrical activity of the VTA (47), the dorsal vagal nucleus (51), the premammillary nucleus of the hypothalamus (45), the lateral hypothalamic area (19), and the dorsal and ventral raphe nucleus (52). Based on the fact that approximately 90% of EGFP and pSTAT3 positive neurons are Ucn1 positive and the responses in the electrophysiological study, we argue that the observed effects of leptin are through a direct interaction of leptin via LepRb on the Ucn1 neurons, although we cannot exclude a (although not very likely)

possible involvement of interneurons. The electrophysiological response of the mouse npEW after leptin administration indicates that rapid signaling downstream of LepRb is an important facet of leptin regulating the activity of npEW neurons. Meanwhile, leptin's ability to induce STAT3 activation supports the idea that the messenger may control long-term (*e.g.* transcriptional) events, such as (*Ucn1*) gene expression and Ucn1 biosynthesis as well.

Based on the anorexigenic action of centrally administered Ucn1, one would expect an increased release of Ucn1 from the npEW after leptin injection. Our results do not support this expectation but are well in line with the facts that lesioning the EW results in inhibition of food intake (14) and that decreased leptin by starvation increases Ucn1 mRNA in the rat npEW (18). In addition, high-fat diet decreases Ucn1 mRNA in the npEW too, concomitant with increased plasma leptin level (53). Furthermore, the physiological role(s) of a centrally administered neuropeptide has always been difficult to interpret. Ucn1 administered via an icv route has access to both corticotropin-releasing factor receptor subtypes, which could lead to differential (even opposing) behavioral, physiological, and neuroendocrine responses. Central injection of Ucn1 not only reduces food intake (23) but also increases energy expenditure (54), increases anxiety-like behavior (55–57), and even improves learning and memory (58), suggesting that the physiological role(s) of icv-injected Ucn1 will highly depend on its concentration, its site of action, and its binding with its cognate receptor(s). Taken together, we argue that a negative correlation exists between plasma leptin and Ucn1 specifically in the npEW.

Conclusion and possible functional consideration

The relationship between leptin and the regulation of short and long-term aspects of the activity of Ucn1 neurons in the npEW, as emanate from the present studies, support a notion that these neurons play an important role in the processing of information about the metabolic status of the animal. Interestingly, developmental studies of midbrain (dopaminergic) neurons strongly suggest a common origin for midbrain LepRb neurons, including the substantia nigra, VTA, rostral linear raphe nucleus, and the npEW (19, 46). Regulation of the mesolimbic dopamine system plays an important role in feeding behavior, as well as in reward processing (59–61), and metabolic status is an important modulator of such motivational behaviors. It has been suggested that leptin, a major signal of long-term energy balance, can modulate the response to food and nonfood rewards via the mesolimbic dopami-

nergic system (62). Although the VTA is a well-known center modulating reward processing (59), as well as expresses LepRb, in a recent study, Leshan *et al.* (63) have found that LepRb VTA neurons represent a subclass of VTA dopaminergic neurons that specifically innervate and control the central amygdala and send only scarce projections to the nucleus accumbens (63). This clearly indicates that yet another population(s) of midbrain LepRb neurons may play roles in mediating/controlling reward processing. In support of such action, particularly by the midbrain npEW-Ucn1/LepRb expressing neurons, are the facts that these neurons are directly regulated by leptin (this study) and that Ucn1's ability to reduce food intake was interestingly accompanied by a reduced motivation to eat (64). This intriguing (inter)action of npEW-Ucn1/LepRb is currently under investigation in our group.

Acknowledgments

We thank Dr. Christian Bjorbaeck (Beth Israel Deaconess Medical Center, Harvard University, Boston, MA) for the LepR cDNA.

Address all correspondence and requests for reprints to: Dr. Tamás Kozicz, Department of Cellular Animal Physiology, Faculty of Science, Radboud University Nijmegen, P.O. Box 9010, 6500 GL Nijmegen, The Netherlands. E-mail: t.kozicz@science.ru.nl.

This work was supported by The Netherlands Organization for Scientific Research Grant 864.05.008 (to T.K.) and the National Institutes of Health Grants DK078056 and DK057768 (to M.G.M.) and HD061539 (to C.F.E.).

Disclosure Summary: The authors have nothing to disclose.

References

- Arora S, Anubhuti 2006 Role of neuropeptides in appetite regulation and obesity—a review. *Neuropeptides* 40:375–401
- Morton GJ, Cummings DE, Baskin DG, Barsh GS, Schwartz MW 2006 Central nervous system control of food intake and body weight. *Nature* 443:289–295
- Dhillon WS 2007 Appetite regulation: an overview. *Thyroid* 17:433–445
- Zhang Y, Proenca R, Maffei M, Barone M, Leopold L, Friedman JM 1994 Positional cloning of the mouse obese gene and its human homologue. *Nature* 372:425–432
- Chen H, Charlat O, Tartaglia LA, Woolf EA, Weng X, Ellis SJ, Lakey ND, Culpepper J, Moore KJ, Breitbart RE, Duyk GM, Tepper RI, Morgenstern JP 1996 Evidence that the diabetes gene encodes the leptin receptor: identification of a mutation in the leptin receptor gene in db/db mice. *Cell* 84:491–495
- Hegyí K, Fülöp K, Kovács K, Tóth S, Falus A 2004 Leptin-induced signal transduction pathways. *Cell Biol Int* 28:159–169
- Ghilardi N, Ziegler S, Wiestner A, Stoffel R, Heim MH, Skoda RC 1996 Defective STAT signaling by the leptin receptor in diabetic mice. *Proc Natl Acad Sci USA* 93:6231–6235
- Villanueva EC, Myers Jr MG 2008 Leptin receptor signaling and the regulation of mammalian physiology. *Int J Obes* 32(Suppl 7):S8–S12
- Sahu A 2004 Minireview: a hypothalamic role in energy balance with special emphasis on leptin. *Endocrinology* 145:2613–2620
- Simerly RB 2008 Hypothalamic substrates of metabolic imprinting. *Physiol Behav* 94:79–89
- Elmquist JK, Bjørbaeck C, Ahima RS, Flier JS, Saper CB 1998 Distributions of leptin receptor mRNA isoforms in the rat brain. *J Comp Neurol* 395:535–547
- Scott MM, Lachey JL, Sternson SM, Lee CE, Elias CF, Friedman JM, Elmquist JK 2009 Leptin targets in the mouse brain. *J Comp Neurol* 514:518–532
- Caron E, Sachot C, Prevot V, Bouret SG 2010 Distribution of leptin-sensitive cells in the postnatal and adult mouse brain. *J Comp Neurol* 518:459–476
- Weitemier AZ, Ryabinin AE 2005 Lesions of the Edinger-Westphal nucleus alter food and water consumption. *Behav Neurosci* 119:1235–1243
- Vaughan J, Donaldson C, Bittencourt J, Perrin MH, Lewis K, Sutton S, Chan R, Turnbull AV, Lovejoy D, Rivier C 1995 Urocortin, a mammalian neuropeptide related to fish urotensin I and to corticotrophin-releasing factor. *Nature* 378:287–292
- Kozicz T, Yanaihara H, Arimura A 1998 Distribution of urocortin-like immunoreactivity in the central nervous system of the rat. *J Comp Neurol* 391:1–10
- Bittencourt JC, Vaughan J, Arias C, Rissman RA, Vale WW, Sawchenko PE 1999 Urocortin expression in rat brain: evidence against a pervasive relationship of urocortin-containing projections with targets bearing type 2 CRF receptors. *J Comp Neurol* 415:285–312
- Xu L, Bloem B, Gaszner B, Roubos EW, Kozicz T 2009 Sex-specific effects of fasting on urocortin 1, cocaine- and amphetamine-regulated transcript peptide and nesfatin-1 expression in the rat Edinger-Westphal nucleus. *Neuroscience* 162:1141–1149
- Leininger GM, Jo YH, Leshan RL, Louis GW, Yang H, Barrera JG, Wilson H, Opland DM, Faouzi MA, Gong Y, Jones JC, Rhodes CJ, Chua Jr S, Diano S, Horvath TL, Seeley RJ, Becker JB, Münzberg H, Myers Jr MG 2009 Leptin acts via leptin receptor-expressing lateral hypothalamic neurons to modulate the mesolimbic dopamine system and suppress feeding. *Cell Metab* 10:89–98
- Asakawa A, Inui A, Ueno N, Makino S, Fujino MA, Kasuga M 1999 Urocortin reduces food intake and gastric emptying in lean and ob/ob obese mice. *Gastroenterology* 116:1287–1292
- Wang L, Martínez V, Rivier JE, Taché Y 2001 Peripheral urocortin inhibits gastric emptying and food intake in mice: differential role of CRF receptor 2. *Am J Physiol Regul Integr Comp Physiol* 281:R1401–R1410
- Asakawa A, Inui A, Ueno N, Makino S, Fujimiya M, Fujino MA, Kasuga M 2001 Urocortin reduces oxygen consumption in lean and ob/ob mice. *Int J Mol Med* 7:539–541
- Spina M, Merlo-Pich E, Chan RK, Basso AM, Rivier J, Vale W, Koob GF 1996 Appetite-suppressing effects of urocortin, a CRF-related neuropeptide. *Science* 273:1561–1564
- Ohata H, Suzuki K, Oki Y, Shibasaki T 2000 Urocortin in the ventromedial hypothalamic nucleus acts as an inhibitor of feeding behavior in rats. *Brain Res* 861:1–7
- Kotz CM, Wang C, Levine AS, Billington CJ 2002 Urocortin in the hypothalamic PVN increases leptin and affects uncoupling proteins-1 and -3 in rats. *Am J Physiol Regul Integr Comp Physiol* 282:R546–R551
- Pan W, Kastin AJ 2008 Urocortin and the brain. *Prog Neurobiol* 84:148–156
- Pan W, Tu H, Hsueh H, Daniel J, Kastin AJ 2007 Unexpected amplification of leptin-induced Stat3 signaling by urocortin: implications for obesity. *J Mol Neurosci* 33:232–238
- Myers Jr MG, Münzberg H, Leininger GM, Leshan RL 2009 The geometry of leptin action in the brain: more complicated than a simple ARC. *Cell Metab* 9:117–123

29. Mao X, Fujiwara Y, Orkin SH 1999 Improved reporter strain for monitoring Cre recombinase-mediated DNA excisions in mice. *Proc Natl Acad Sci USA* 96:5037–5042
30. Simmons DM, Arriza JL, Swanson LW 1989 A complete protocol for in situ hybridization of messenger RNAs in brain and other tissues with radiolabelled single stranded RNA probes. *J Histochemol* 12:169–181
31. Münzberg H, Huo L, Nillni EA, Hollenberg AN, Bjørbaek C 2003 Role of signal transducer and activator of transcription 3 in regulation of hypothalamic proopiomelanocortin gene expression by leptin. *Endocrinology* 144:2121–2131
32. Paxinos G and Franklin KBJ 2001 The mouse brain in stereotaxic coordinates. San Diego, CA: Academic Press
33. Kimura N, Nishikawa S, Tamai M 2000 Müller cells in developing rats with inherited retinal dystrophy. *Tohoku J Exp Med* 191:157–166
34. Ladyman SR, Grattan DR 2004 Region-specific reduction in leptin-induced phosphorylation of signal transducer and activator of transcription-3 (STAT3) in the rat hypothalamus is associated with leptin resistance during pregnancy. *Endocrinology* 145:3704–3711
35. Bachtell RK, Weitemier AZ, Galvan-Rosas A, Tsvikovskaia NO, Risinger FO, Phillips TJ, Grahame NJ, Ryabinin AE 2003 The Edinger-Westphal-lateral septum urocortin pathway and its relationship to alcohol consumption. *J Neurosci* 23:2477–2487
36. Gaszner B, Jensen KO, Farkas J, Reglodi D, Csernus V, Roubos EW, Kozicz T 2009 Effects of maternal separation on dynamics of urocortin 1 and brain-derived neurotrophic factor in the rat non-preganglionic Edinger-Westphal nucleus. *Int J Dev Neurosci* 27:439–451
37. Turnbull AV, Vaughan J, Rivier JE, Vale WW, Rivier C 1999 Urocortin is not a significant regulator of intermittent electrofootshock-induced adrenocorticotropin secretion in the intact male rat. *Endocrinology* 140:71–78
38. Yang JH, Li LH, Lee S, Jo IH, Lee SY, Ryu PD 2007 Effects of adrenalectomy on the excitability of neurosecretory parvocellular neurones in the hypothalamic paraventricular nucleus. *J Neuroendocrinol* 19:293–301
39. Cornelisse LN, Deumens R, Coenen JJ, Roubos EW, Gielen CC, Ypey DL, Jenks BG, Scheenen WJ 2002 Sauvagine regulates Ca²⁺ oscillations and electrical membrane activity of melanotrope cells of *Xenopus laevis*. *J Neuroendocrinol* 14:778–787
40. Shapiro SS, Wilk MB 1965 An analysis of variance test for normality. *Biometrika* 52:591–599
41. Snedecor GW, Cochran WG 1989 *Statistical Methods*, Eighth Edition, Iowa State University Press, Ames, IA
42. Damiani CL, O'Callaghan JP 2007 Recapitulation of cell signaling events associated with astrogliosis using the brain slice preparation. *J Neurochem* 100:720–726
43. Banks AS, Davis SM, Bates SH, Myers Jr MG 2000 Activation of downstream signals by the long form of the leptin receptor. *J Biol Chem* 275:14563–14572
44. Robertson SA, Leininger GM, Myers Jr MG 2008 Molecular and neural mediators of leptin action. *Physiol Behav* 94:637–642
45. Leshan RL, Louis GW, Jo YH, Rhodes CJ, Münzberg H, Myers Jr MG 2009 Direct innervation of GnRH neurons by metabolic- and sexual odorant-sensing leptin receptor neurons in the hypothalamic ventral premammillary nucleus. *J Neurosci* 29:3138–3147
46. Joksimovic M, Anderegg A, Roy A, Campochiaro L, Yun B, Kitappa R, McKay R, Awatramani R 2009 Spatiotemporally separable Shh domains in the midbrain define distinct dopaminergic progenitor pools. *Proc Natl Acad Sci USA* 106:19185–19190
47. Hommel JD, Trinko R, Sears RM, Georgescu D, Liu ZW, Gao XB, Thurmon JJ, Marinelli M, DiLeone RJ 2006 Leptin receptor signaling in midbrain dopamine neurons regulates feeding. *Neuron* 51:801–810
48. Fulton S, Pissios P, Manchon RP, Stiles L, Frank L, Pothos EN, Maratos-Flier E, Flier JS 2006 Leptin regulation of the mesoaccumbens dopamine pathway. *Neuron* 51:811–822
49. Baskin DG, Breininger JF, Schwartz MW 1999 Leptin receptor mRNA identifies a subpopulation of neuropeptide Y neurons activated by fasting in rat hypothalamus. *Diabetes* 48:828–833
50. Banks WA, Clever CM, Farrell CL 2000 Partial saturation and regional variation in the blood-to-brain transport of leptin in normal weight mice. *Am J Physiol Endocrinol Metab* 278:E1158–E1165
51. Williams KW, Zsombok A, Smith BN 2007 Rapid inhibition of neurons in the dorsal motor nucleus of the vagus by leptin. *Endocrinology* 148:1868–1881
52. Yadav VK, Oury F, Suda N, Liu ZW, Gao XB, Confavreux C, Klemenhagen KC, Tanaka KF, Gingrich JA, Guo XE, Tecott LH, Mann JJ, Hen R, Horvath TL, Karsenty G 2009 A serotonin-dependent mechanism explains the leptin regulation of bone mass, appetite, and energy expenditure. *Cell* 138:976–989
53. Legendre A, Papakonstantinou E, Roy MC, Richard D, Harris RB 2007 Differences in response to corticotropin-releasing factor after short- and long-term consumption of a high-fat diet. *Am J Physiol Regul Integr Comp Physiol* 293:R1076–R1085
54. De Fanti BA, Martínez JA 2002 Central urocortin activation of sympathetic-regulated energy metabolism in Wistar rats. *Brain Res* 930:37–41
55. Spiga F, Lightman SL, Shekhar A, Lowry CA 2006 Injections of urocortin 1 into the basolateral amygdala induce anxiety-like behavior and c-Fos expression in brainstem serotonergic neurons. *Neuroscience* 138:1265–1276
56. Gehlert DR, Shekhar A, Morin SM, Hipskind PA, Zink C, Gackenhaimer SL, Shaw J, Fitz SD, Sajdyk TJ 2005 Stress and central Urocortin increase anxiety-like behavior in the social interaction test via the CRF1 receptor. *Eur J Pharmacol* 509:145–153
57. D'Anna KL, Stevenson SA, Gammie SC 2005 Urocortin 1 and 3 impair maternal defense behavior in mice. *Behav Neurosci* 119:1061–1071
58. Telegdy G, Tiricz H, Adamik A 2005 Involvement of neurotransmitters in urocortin-induced passive avoidance learning in mice. *Brain Res Bull* 67:242–247
59. Saper CB, Chou TC, Elmquist JK 2002 The need to feed: homeostatic and hedonic control of eating. *Neuron* 36:199–211
60. Kelley AE 2004 Memory and addiction: shared neural circuitry and molecular mechanisms. *Neuron* 44:161–179
61. Volkow ND, Wise RA 2005 How can drug addiction help us understand obesity? *Nat Neurosci* 8:555–560
62. Cota D, Barrera JG, Seeley RJ 2006 Leptin in energy balance and reward: two faces of the same coin? *Neuron* 51:678–680
63. Leshan RL, Opland DM, Louis GW, Leininger GM, Patterson CM, Rhodes CJ, Münzberg H, Myers Jr MG 2010 Ventral tegmental area leptin receptor neurons specifically project to and regulate cocaine- and amphetamine-regulated transcript neurons of the extended central amygdala. *J Neurosci* 30:5713–5723
64. Kinney JW, Scruggs B, Avery DD 2001 Peripheral administration of urocortin suppresses operant responding for food reward. *Peptides* 22:583–587