

HUMAN GENETICS

DNA methylation as a mediator of the association between prenatal adversity and risk factors for metabolic disease in adulthood

Elmar W. Tobj,^{1,2} Roderick C. Slieker,¹ René Luijk,^{1,3} Koen F. Dekkers,¹ Aryeh D. Stein,⁴ Kate M. Xu,^{3,5} Biobank-based Integrative Omics Studies Consortium,* P. Eline Slagboom,¹ Erik W. van Zwet,³ L. H. Lumey,^{1,6†} Bastiaan T. Heijmans^{1‡}

Copyright © 2018
The Authors, some
rights reserved;
exclusive licensee
American Association
for the Advancement
of Science. No claim to
original U.S. Government
Works. Distributed
under a Creative
Commons Attribution
NonCommercial
License 4.0 (CC BY-NC).

Although it is assumed that epigenetic mechanisms, such as changes in DNA methylation (DNAm), underlie the relationship between adverse intrauterine conditions and adult metabolic health, evidence from human studies remains scarce. Therefore, we evaluated whether DNAm in whole blood mediated the association between prenatal famine exposure and metabolic health in 422 individuals exposed to famine in utero and 463 (sibling) controls. We implemented a two-step analysis, namely, a genome-wide exploration across 342,596 cytosine-phosphate-guanine dinucleotides (CpGs) for potential mediators of the association between prenatal famine exposure and adult body mass index (BMI), serum triglycerides (TG), or glucose concentrations, which was followed by formal mediation analysis. DNAm mediated the association of prenatal famine exposure with adult BMI and TG but not with glucose. DNAm at *PIM3* (cg09349128), a gene involved in energy metabolism, mediated 13.4% [95% confidence interval (CI), 5 to 28%] of the association between famine exposure and BMI. DNAm at six CpGs, including *TXNIP* (cg19693031), influencing β cell function, and *ABCG1* (cg07397296), affecting lipid metabolism, together mediated 80% (95% CI, 38.5 to 100%) of the association between famine exposure and TG. Analyses restricted to those exposed to famine during early gestation identified additional CpGs mediating the relationship with TG near *PFKFB3* (glycolysis) and *METTL8* (adipogenesis). DNAm at the CpGs involved was associated with gene expression in an external data set and correlated with DNAm levels in fat depots in additional postmortem data. Our data are consistent with the hypothesis that epigenetic mechanisms mediate the influence of transient adverse environmental factors in early life on long-term metabolic health. The specific mechanism awaits elucidation.

INTRODUCTION

Since the early 1970s, epidemiological studies have reported associations between an adverse prenatal environment and an increased disease risk in later life (1). Animal studies provided potential mechanisms for these observations (2), including environmentally induced changes to epigenetic marks during development (3). Epigenetic marks such as DNA methylation (DNAm) influence the transcription potential of genomic regions and, once changed, can result in long-term effects (4). Animal experiments show that epigenetic changes that are established during early development contribute to phenotypes later in life (5, 6). In parallel, human studies show changes in DNAm after exposure to a range of adverse prenatal conditions (7–12). These DNAm differences may mediate part of the association between adverse prenatal conditions and childhood phenotypes (13–15). Systematic epigenome-wide studies investigating the associations among these adverse conditions, DNAm changes, and specific phenotypes later in life are still largely lacking (16).

To fill this gap, we examined these associations in the quasi-experimental setting of the Dutch Hunger Winter of 1944–1945 (17), a 6-month famine at the end of World War II. Exposure to famine during gestation is associated with an increased risk of obesity, dyslipidemia, type 2 diabetes, and schizophrenia (18). We focus on our previous studies of the Dutch Hunger Winter, where we documented that prenatal adversity is associated with increases in adverse metabolic phenotypes in adulthood such as body mass index (BMI) and fasting glucose, serum triglycerides (TG), and low-density lipoprotein (LDL) cholesterol concentrations (LDL-C) (19–23). Here, we adopt a genome-wide approach to systematically identify the potential of DNAm to act as a mediator of the relation between prenatal famine exposure and adult outcomes in our study population of prenatally exposed individuals and time and sibling controls (24). We use mediation analysis as a helpful statistical tool to further explore the nature of the relationship between an independent (famine exposure) and dependent variable (metabolic health) through a hypothesized mediator (DNAm).

To formally establish mediation (25), we first re-examined the relation between famine exposure any time during gestation (“famine exposure”) and adult BMI, glucose, TG, and LDL-C outcomes in individuals with genome-wide DNAm data. Next, we examined genome-wide whether DNAm at specific cytosine-phosphate-guanine (CpG) dinucleotides was associated with both famine exposure and the outcome of interest and subjected the identified candidate CpGs to a formal mediation test (26) to determine the extent to which DNAm mediated the association between prenatal famine and adult outcomes. These analyses were repeated for exposure during early gestation, which is an especially sensitive period of gestation (27, 28). To address the potential functional impact of mediating CpGs, we tested for their

¹Molecular Epidemiology, Department of Biomedical Data Sciences, Leiden University Medical Center, 2300 RC Leiden, Netherlands. ²Division of Human Nutrition, Wageningen University and Research, 6708 WE Wageningen, Netherlands. ³Medical Statistics, Department of Biomedical Data Sciences, Leiden University Medical Center, 2300 RC Leiden, Netherlands. ⁴Hubert Department of Global Health, Rollins School of Public Health, Emory University, Atlanta, GA 30322, USA. ⁵Faculty of Psychology and Educational Sciences, Welten Institute, Open University of the Netherlands, 6419 AT Heerlen, Netherlands. ⁶Department of Epidemiology, Mailman School of Public Health, Columbia University, New York, NY 10032, USA.

*The consortium member names are listed in the acknowledgments.

†These authors contributed equally to this work.

‡Corresponding author. Email: bas.heijmans@lumc.nl

association with gene expression (29, 30) and correlation in methylation levels across postmortem studies (31, 32).

Using this approach, we show that the increase in BMI and TG among individuals exposed in utero is mediated by DNAm, specifically near genes involved in development and metabolic processes including energy metabolism (*PIM3*), β cell function (*TXNIP*), glycolysis (*PFKFB3*), and adipogenesis (*METTL8*).

RESULTS

Genome-wide mediation analysis

We first confirmed the previously reported association between famine exposure and BMI, fasted glucose, TG, and LDL-C in the Dutch Hunger Winter Families Study for individuals with complete methylation data (19–23). Individuals with prenatal famine exposure ($n = 348$) had a 5.6% (+0.36 SD) higher BMI ($P = 5.7 \times 10^{-7}$), a 13.5% (+0.23 SD) higher serum TG ($P = 3.8 \times 10^{-3}$), and a 3.8% (+0.22 SD) higher fasted glucose ($P = 0.023$) but no difference in LDL-C ($P > 0.05$), as compared with non-exposed controls ($n = 463$; Table 1). Therefore, LDL-C was excluded from further analyses. Next, we applied a genome-wide screen (342,596 CpGs) to identify potentially mediating CpGs. We simultaneously tested the association of DNAm with famine exposure and with any of the metabolic outcomes (BMI, fasted glucose, or TG) in a single model. For BMI and TG, this resulted in 8 and 16 associated CpG dinucleotides, respectively ($P_{FDR} < 0.05$; Fig. 1). These were candidates for mediation and were explored further. No mediation candidates were identified for fasting glucose concentrations. These candidates from the epigenome-wide association study (EWAS) can arise from a strong association with either exposure, outcome, or both (in which case the strength of the two associations individually may be moderate). Only the latter constitute potentially mediating CpGs.

Table 1. Phenotypic differences and famine exposure.

| | Controls | Famine exposure |
|------------------------------------|-------------|-----------------|
| <i>N</i> | 463 | 348 |
| Age (years) [SD] [†] | 58.0 [5.4] | 58.9 [0.5]*** |
| Male (%) | 43.0 | 46.0 |
| BMI ¹ [SD] | 27.0 [4.2] | 28.5 [5.0]*** |
| LDL-C ² [SD] | 3.42 [0.96] | 3.45 [0.97] |
| Triglycerides ² [SD] | 1.48 [0.86] | 1.68 [1.30]** |
| Glucose baseline ³ [SD] | 5.32 [0.93] | 5.52 [1.19]* |

Nominal P value either * $P < 0.05$, ** $P < 0.01$ or *** $P < 0.001$ from a linear mixed-effects model with the denoted variable as the dependent variable and family identifier as random effect. [†]Model included an additional random effect for exposure status to control for the difference in variance in age between groups. ¹Model-applied correction for age and gender. ²Model-applied correction for age, gender, and statin used, and individuals who were nonfasting at examination were excluded (excluding two controls and five famine-exposed individuals). ³Model-applied correction for age and gender. Individuals who were nonfasting and had prediagnosed diabetes (thus receiving treatment) before the clinical examination were excluded (excluding 19 controls and 32 famine-exposed individuals).

Mediation: Famine exposure and BMI

Of the eight mediation candidates for the EWAS of famine exposure and BMI, only *cg09349128* was associated with both exposure and outcome ($P_{\text{exposure+bmi}} = 1.3 \times 10^{-7}$, $P_{\text{exposure}} = 1.5 \times 10^{-3}$, $P_{\text{outcome}} = 6.5 \times 10^{-8}$; Table 2). Of interest, DNAm at this CpG has been consistently reported to be associated with BMI (33–36). A formal mediation analysis showed that DNAm at *cg09349128* mediates the association between famine exposure and BMI [$\beta_{\text{mediation}} = 0.7\%/ \log(\text{BMI})$; 95% confidence interval (CI), 0.3 to 1.2%; $P = 0.001$]. The mediation path explained 13.4% (95% CI, 5 to 28%; $P = 0.001$) of the association between famine exposure and BMI ($R^2_{\text{LMM}} = 0.27$). This finding persisted after statistical adjustment for smoking, socioeconomic status (SES), and reported dietary intake at the time of examination (calories from fat, protein, or carbohydrates or from any source).

Genomic annotation of *cg09349128* revealed that it mapped to an enhancer region in multiple cell types (37). The enhancer is linked to *PIM3* in epigenome reference data, a gene implicated in cell growth and energy metabolism (38), stem cell renewal (39), and glucose-stimulated insulin secretion in β cells (40). Analysis of 2044 whole blood samples with both genome-wide DNAm (Illumina 450k) and expression [RNA sequencing (RNA-seq)] data (29, 30) showed that methylation of *cg09349128* was associated with the expression of *PIM3* and also with two additional genes in cis, namely, *ZBED4* and *CRELD2* (table S1).

Mediation: Famine exposure and TG

Of the 16 mediation candidates for the association between famine exposure and TG, 6 CpGs were associated with both exposure and outcome (table S2). With the exception of *cg06983052*, methylation at these CpGs was previously reported to be associated with TG or other metabolic traits in EWASs (30, 41–46). All six CpGs mediated the relation between famine exposure and TG ($P < 0.007$; Table 3). The mediation path of each CpG explained between 19.6 and 28.0% of the association between famine exposure and TG ($R^2_{\text{LMM}} = 0.30$). Although not mapping close together and often located on different chromosomes, DNAm levels of the six CpGs were correlated ($\rho = 0.17$ to 0.73 , $P < 0.001$). We therefore tested mediation for the mean standardized DNAm level across all six CpGs. This aggregate measure likewise mediated the association between famine exposure and TG [$\beta_{\text{mediation}} = 0.075 \text{ SD}/ \log(\text{TG})$; 95% CI, 0.047 to 0.104; $P < 0.001$]. The mediation path explained 80.0% (95% CI, 38.5 to 100%; $P = 0.02$) of the association. The role as mediator persisted, for both individual CpGs and their aggregate, after additional adjustment for smoking, SES, and current diet. Adjustment for BMI did somewhat attenuate this association [$\beta_{\text{mediation}} = 0.053 \text{ SD}/ \log(\text{TG})$; 95% CI, 0.03 to 0.08; $P < 0.001$], and as a result, the proportion mediated was affected ($P = 0.27$). Because an additional analysis showed that the CpGs involved did not mediate the association between famine exposure and BMI ($P > 0.076$), it is unlikely that an extended mediation path including BMI is involved in terms of DNAm.

The six mediating CpGs mapped to (intronic) enhancers, open chromatin regions, and exons. Analysis of blood data (29, 30) showed that all but *cg18120259* were associated with the expression of their nearest genes (table S1). This included *cg19693031* with *TXNIP* and *cg07397296* with *ABCG1*. DNAm at both CpGs has been previously associated with TG (30).

Mediation: Early famine exposure

Early gestation appears to be the most vulnerable period in terms of the later-life phenotype (27) as epigenetic (28) consequences of famine exposure. The association between famine exposure and BMI or TG also

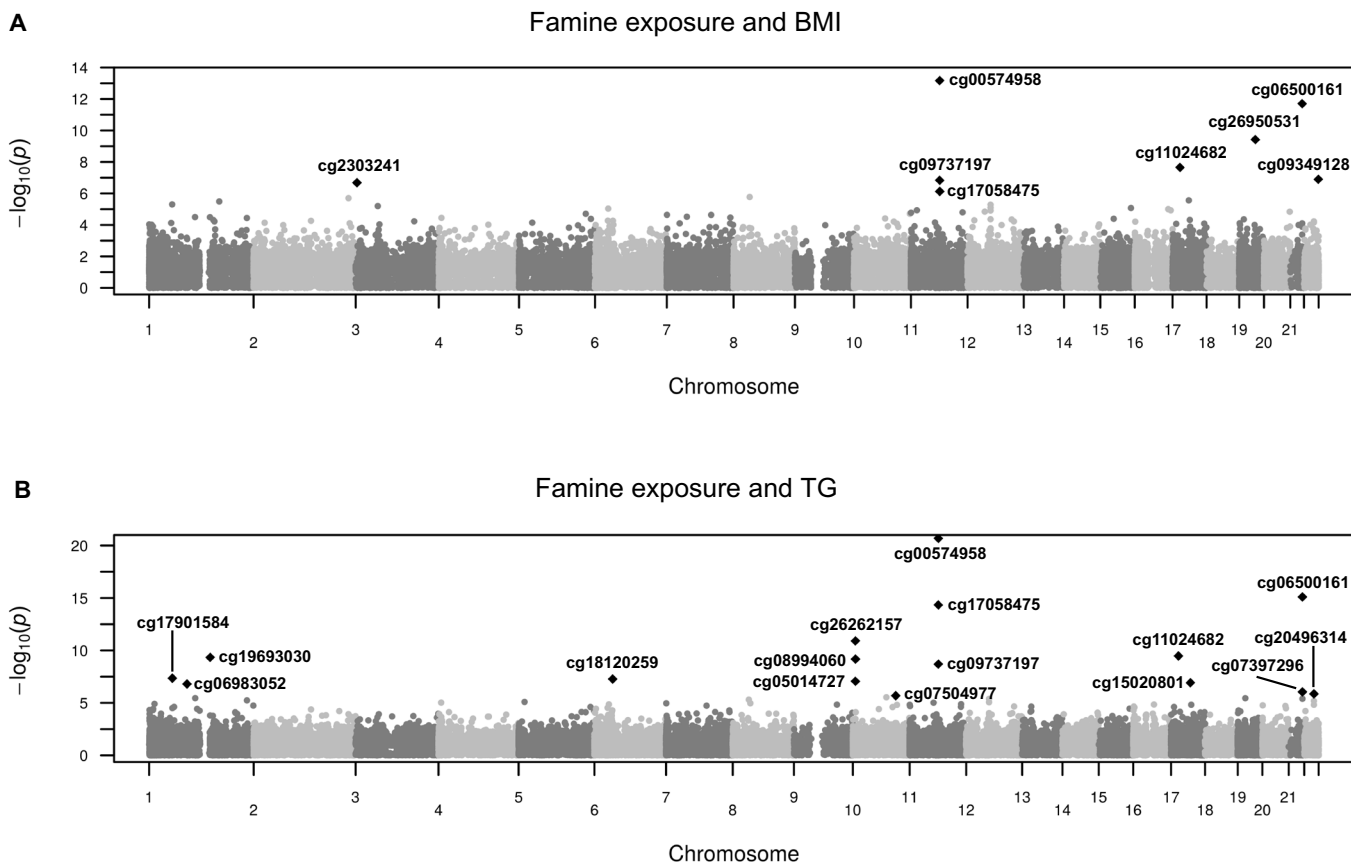


Fig. 1. Manhattan plots: Outcome genome-wide screens for potential mediators. The $-\log(P)$ value is shown (y axis) for each CpG relative to its genomic locations (x axis) on the 22 autosomal chromosomes tested for (A) an EWAS on both famine exposure and BMI and (B) an EWAS on both famine exposure and serum TG.

Table 2. Genome-wide screen for potential mediators: famine exposure and BMI.

| CpG | CpG characteristics | | | Rank | Mediation EWAS | | Associations with either famine exposure or BMI* | | | | |
|-------------------------|---------------------|--|-------------------------------|------|-----------------------|----------------------|--|----------------------|---------------|-----------------------|------------------|
| | Location (hg19) | Nearest gene (expression) [†] | Methylation (SD) [‡] | | EWAS P^{\S} | EWAS P_{FDR} | β_{famine} | P_{famine} | β_{BMI} | P_{BMI} | Previous EWAS |
| cg00574958 | chr11:68607622 | CPT1A | 13.6 (2.6) | 1 | 6.7×10^{-14} | 2.3×10^{-8} | -0.2 | 0.19 | -4.0 | 1.7×10^{-16} | (33, 56, 72, 73) |
| cg06500161 | chr21:43656587 | ABCG1 | 65.9 (3.0) | 2 | 2.0×10^{-12} | 3.3×10^{-7} | -0.1 | 0.75 | 4.3 | 2.5×10^{-13} | (33, 43, 56, 73) |
| cg26950531 | chr19:38704515 | DPF1 | 32.5 (6.1) | 3 | 2.2×10^{-10} | 4.3×10^{-5} | 0.3 | 0.50 | -8.9 | 1.3×10^{-11} | (56) |
| cg11024682 | chr17:17730094 | SREBF1 | 53.2 (3.2) | 4 | 2.2×10^{-8} | 1.9×10^{-3} | -0.1 | 0.70 | 3.3 | 1.2×10^{-9} | (33, 43, 56) |
| cg09349128 | chr22:50327986 | CRELD2 | 39.0 (3.8) | 5 | 1.3×10^{-7} | 8.3×10^{-3} | -0.7 | 1.5×10^{-3} | -3.5 | 6.5×10^{-8} | (33-36, 56) |
| cg09737197 | chr11:68607675 | CPT1A | 20.4 (4.6) | 6 | 1.5×10^{-7} | 8.3×10^{-3} | -0.4 | 0.093 | -4.4 | 3.2×10^{-9} | (33, 73) |
| cg23032421 | chr3:3152038 | IL5RA | 73.9 (4.1) | 7 | 2.1×10^{-7} | 0.01 | -0.3 | 0.18 | -3.4 | 5.8×10^{-9} | (33) |
| cg17058475 | chr11:68607737 | CPT1A | 16.1 (4.1) | 8 | 7.4×10^{-7} | 0.032 | -0.1 | 0.66 | -4.2 | 2.3×10^{-8} | (30, 56, 72-74) |
| cg15659713 [¶] | chr8:38586183 | TACC1 | 24.6 (3.9) | 9 | 1.7×10^{-7} | 0.064 | 1.3 | 1.7×10^{-7} | -0.4 | 0.63 | (28) |
| cg26199857 [¶] | chr12:54764265 | ZNF385A | 68.9 (5.7) | 14 | 5.2×10^{-7} | 0.13 | 2.0 | 3.1×10^{-7} | 1.3 | 0.28 | (28) |

*The estimate and (nominal) P value belonging to the EWAS for famine exposure ($\beta = \text{exposed} - \text{unexposed}$) or BMI ($\beta/\log(\text{BMI})$). [†]Nearest gene within 100 kb. [‡]The Illumina 450k array β value (ranging from 0 to 1) multiplied by 100 for easy interpretation. This is done throughout the presented work. [§]The P value belonging to an analysis of variance (ANOVA) test (χ^2 , $df = 2$) between a generalized estimating equations (GEE) model with and without both famine exposure and BMI. [¶]The two CpGs identified in a previous EWAS on famine exposure (28).

extended to early gestational exposure but not to preconceptional exposure (table S3). Therefore, we investigated whether mediation by DNAm is also present for the elevated BMI and TG in individuals with “early” exposure. The subsequent genome-wide screens for possible mediators of these associations did not yield candidates for BMI that were associated with both DNAm and outcome (Fig. 2 and table S4).

Seventeen CpGs were potential mediators for the association between early exposure and TG. Two of which were associated with both early exposure and TG (table S4). Both *cg08994060* [$\beta_{\text{mediation}} = 4.1\%$ (95% CI, 0.3 to 8.3%), $P = 0.033$] and *cg11269166* [$\beta_{\text{mediation}} = 3.5\%$ (95% CI, 0.4 to 7.2%), $P = 0.027$] mediated the association between early exposure and TG ($R^2_{\text{LMM}} = 0.32$). The proportion mediated was 24.5% for *cg08994060* ($P = 0.054$), whereas *cg11269166* mediated 19.4% of the association between exposure and TG (95% CI, 1.5 to 81.3%; $P = 0.039$). The aggregate measure mediated the association between early exposure and TG [$\beta_{\text{mediation}} = 0.069 \text{ SD}/\log(\text{TG})$ (95% CI, 0.026 to 0.116), $P = 0.02$], explaining 36.3% (95% CI, 15.7 to 100%; $P = 0.02$) of the association. Correction for smoking, SES, and current diet had no influence on these outcomes. Additional correction for BMI attenuated the association of *cg08994060* [$\beta_{\text{mediation}} = 3.2\%$ (95% CI, 0.0 to 7.0%), $P = 0.052$] but not of *cg11269166* or their aggregate.

CpG *cg08994060* is located in a deoxyribonuclease I (DNaseI) hypersensitivity cluster in an intron of *PFKFB3*, a rate-limiting enzyme in glycolysis, and was associated with expression of this gene in whole blood (table S1). Similarly, *cg11269166* is located in an enhancer located in an intron of *METTL8*, a gene involved in adipogenesis (47), and was associated with *METTL8* expression in whole blood (table S1).

Cross-tissue comparison

We measured DNAm in whole blood and do not have specimens from other tissues available in our cohort (24). Mean differences in DNAm levels vary between tissues (32), but DNAm level variation in blood may still reflect variation in other tissues (48). We investigated DNAm data across 12 postmortem tissue types from 16 cadavers (30, 31) and found that the DNAm patterns in blood showed broad correspondence with those in internal tissues [Spearman’s $\rho = 0.42$, $P < 10^{-6}$; blood, liver, kidney, skin, omentum (visceral fat), subcutaneous fat, and fat from around the kidney], although the correlation between tissues was more modest when CpGs were analyzed individually in this small data set (fig. S3). DNAm in blood was correlated with DNAm in omentum and subcutaneous fat (both $\rho = 0.51$, $P < 10^{-11}$) and fat taken from around the kidney ($\rho = 0.42$, $P = 2.7 \times 10^{-7}$) but not with DNAm in the liver ($\rho = 0.14$, $P = 0.14$).

Table 3. Mediation analysis: DNAm and the association between famine exposure and triglycerides.

| CpG | Location (hg19) | Nearest gene* | Methylation (SD) [†] | Rank | EWAS P_{FDR} | P_{famine} | P_{TG} | Previous studies | $\beta_{\text{mediation}}^{\ddagger}$ | $P_{\text{mediation}}$ | Proportion mediated (%) [95% CI] [§] | $P_{\text{proportion}}$ |
|-------------------|-----------------|---------------------|-------------------------------|------|-----------------------|----------------------|-----------------------|------------------|---------------------------------------|------------------------|---|-------------------------|
| <i>cg19693031</i> | chr1:145441552 | <i>TXNIP</i> | 77.5 (4.3) | 6 | 2.6×10^{-5} | 4.8×10^{-3} | 2.3×10^{-11} | (41–45) | 2.6 [0.7–4.8] | 0.005 | 28.0 [5.7–100] | 0.026 |
| <i>cg18120259</i> | chr6:43894639 | <i>LOC100132354</i> | 60.4 (4.7) | 10 | 1.8×10^{-3} | 6.6×10^{-4} | 6.4×10^{-8} | (44) | 2.3 [0.8–4.1] | 0.001 | 24.9 [7.5–100] | 0.021 |
| <i>cg15020801</i> | chr17:46022809 | <i>PNPO</i> | 36.1 (3.4) | 12 | 3.5×10^{-3} | 7.1×10^{-4} | 6.0×10^{-8} | (30) | 2.3 [0.9–4.2] | 0.001 | 25 [7.0–100] | 0.022 |
| <i>cg06983052</i> | chr1:90288099 | <i>LRRC8D</i> | 64.8 (3.8) | 13 | 4.2×10^{-3} | 1.0×10^{-5} | 5.3×10^{-6} | | 2.6 [1.1–4.5] | <0.001 | 28.0 [8.8–100] | 0.024 |
| <i>cg07397296</i> | chr21:43655316 | <i>ABCG1</i> | 26.9 (3.8) | 14 | 0.021 | 5.1×10^{-3} | 1.9×10^{-7} | (49) | 1.9 [0.6–3.6] | 0.005 | 20.5 [4.6–97.4] | 0.027 |
| <i>cg20496314</i> | chr22:39759864 | <i>SYNGR1</i> | 40.2 (4.3) | 15 | 0.032 | 3.9×10^{-3} | 1.5×10^{-7} | (45, 46) | 1.8 [0.5–3.5] | 0.007 | 19.6 [3.6–88.3] | 0.026 |

*Nearest gene within 100 kb. †The Illumina 450k array β value (ranging from 0 to 1) multiplied by 100 for easy interpretation. ‡This is the estimate and CI based on 10K Monte Carlo simulations of the indirect effect or mediation effect, which is often referred to as the “ $a \times b$ ” effect. §The percentage of the total exposure-phenotype relationship explained by the indirect (mediated) effect as based on 10K Monte Carlo simulations.

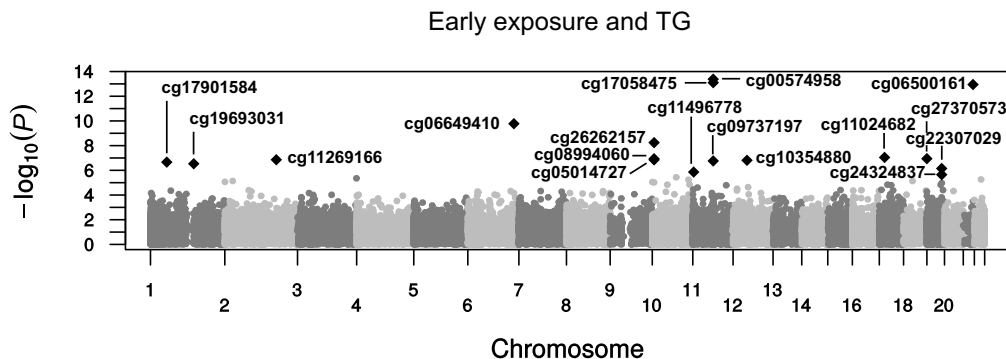


Fig. 2. Manhattan plot: Outcome genome-wide screen for potential mediators. The $-\log(P)$ value (y axis) for each CpG relative to its genomic locations (x axis) on the 22 autosomal chromosomes for the EWAS for both early famine exposure and serum TG.

DISCUSSION

A stepwise genome-wide mediation analysis is consistent with the hypothesis that epigenetic mechanisms play a role in mediating the association between prenatal famine exposure and later-life metabolic health. Specifically, our results suggest that DNAm at an enhancer linked to *PIM3* expression mediated the association between famine exposure and BMI. *PIM3* influences cell growth and energy metabolism, including mitochondrial function (38). DNAm at six CpGs, including at previously TG-associated CpGs at *TXNIP* and *ABCG1* (41–45, 49), mediated the association between famine exposure and TG. DNAm at these CpGs was likewise associated with the expression of genes implicated in cell growth and energy metabolism. Two different CpGs, at *PFKFB3* (which plays a key role in glycolysis) and *METTL8* (linked to adipogenesis), mediated the association between early exposure and TG. DNAm at the nine identified CpGs correlated with DNAm in various other tissues, including multiple fat deposits. DNAm at the nine CpGs associated with the expression of genes with general roles in growth and metabolism, and although mediators, they are not known to play direct roles in fat and TG metabolism. Therefore, the nine CpGs are unlikely to be directly involved in a mechanistic sense in BMI or TG but may have contributed to adverse morphological or cellular metabolic profiles with an adverse effect on metabolic health in prenatally exposed individuals.

We used a novel approach to identify possible mediators by performing a series of genome-wide analyses that tested for an association with DNAm of both the exposure and a metabolic outcome simultaneously. This resulted in a set of CpGs associated with either famine exposure or a later-life metabolic outcome, or both. The latter were formally tested for mediation. CpGs that associated with (early) famine exposure in our previous EWAS of famine exposure only in the same data set (28) were not identified as potential mediators (that is, were associated with exposure but not with outcome). In concordance with this (28) and earlier work (50–52), all the mediating CpGs overlapped regulatory elements; were linked to the expression of genes involved in growth, differentiation, and metabolism; and were associated with either famine exposure or early famine exposure. It should be noted that the latter analysis was based on a small sample size and had limited power, but the results may point to additional processes unique for those exposed during early gestation.

Several strengths and limitations of this study and mediation analyses in general are important to discuss. We observed that the association between prenatal famine and BMI or TG was mediated by single CpGs (instead of regions). This observation may be related to technical (that is, the sparsity of the Illumina 450k array) and biological factors [differential methylation may be related to very local differences in transcription factor binding, not extending across regions (29)]. We recognize that statistical evidence for mediation does not clarify the nature of the mechanism. However, it does point toward possible pathways that warrant further exploration. It is also relevant to note that DNAm was measured in whole blood, which may not be the most relevant tissue to study for BMI or TG. However, DNAm data from multiple tissues from the same donor (31, 32) show a broad agreement in DNAm patterns of the CpGs in whole blood and various fat deposits. Moreover, two previous studies showed that the associations between DNAm at *PIM3* (*cg09349128*) and BMI (33) and DNAm at *ABCG1* (*cg07397296*) and TG (49), on which we likewise report here, were not only found in blood but could also be validated in DNAm data from adipose tissue. Our findings may therefore point toward more general processes in other tissues, including adipose tissue, and may reflect other epigenetic marks correlated to DNAm.

Mediation analysis is sensitive to unmeasured confounding (53). We address this concern, within the limits of an observational study six decades after the exposure, on several levels with our study design and study execution. First, we analyzed the impact of prenatal famine exposure among same-sex sibling pairs concordant and discordant on famine exposure, thereby mitigating confounding by familial factors. Next, we selected individuals born before and after the famine in the same institutions as controls for those with prenatal famine exposure and rely on the quasi-experimental circumstances of the Dutch Famine, precluding confounding by social characteristics related to wealth and nutrition in pregnancy. The inclusion of individuals either conceived and born before the famine or conceived and born after the famine also allows us to investigate and adjust for the influence of age, which is crucial (54). Last, we could effectively exclude confounding effects of several measured lifestyle factors including diet and smoking.

We recognize that the interpretation of mediation analyses requires prudence (53) because mediation analysis is sensitive to differences in measurement accuracy between observed exposure and an empirically measured mediator. However, this risk is reduced by the quasi-experimental setting of our study. Also, mediation analysis is equally sensitive for spurious associations as regular association analysis (53). Of the nine mediating CpGs identified here, all but *cg06983052* (*LRR8D*) have been related to obesity, TG, or other metabolic phenotypes in previous studies (Tables 2 and 3). In addition, mediation can also be affected by reverse causation (53). Prenatal famine exposure may be considered a causal anchor that, while not as strong as genetic variants in Mendelian randomization (53), reduces the risk of reverse causation for several of the tests performed within the mediation framework with the exception of the association between mediator and outcome (55). Longitudinal data could be used to refute reverse causation (preferably from conception onward), but by design, we did not sample at birth or any other time at a younger age before the potential onset of the metabolic complications.

The nine CpGs on which we report include the well-described CpGs mapping to *PIM3* (*cg09349128*) (33–36, 56) and *TXNIP* (*cg19693031*) (30, 41–44) that were also reported in large Mendelian randomization studies (30, 33, 56). No evidence was found for an effect of BMI on DNAm at *cg09349128* (33, 56), whereas weak evidence was found for an effect of TG on DNAm at *cg19693031* (30). However, DNAm at this latter CpG is also associated with prenatal smoke exposure (45) [and not adult smoke exposure (11)], an exposure likewise linked with elevated serum TG (57). DNAm at this CpG is also associated with future type 2 diabetes risk that is independent of the traditional risk factors, which included dyslipidemia (43), analogs to the association between prenatal famine exposure, and type 2 diabetes (20). The overlap with previous EWAS findings highlights not only the fact that we are looking at epigenetic variation with a modest individual impact on variation in metabolic health but also the idea that the relevance of our results may extend beyond prenatal famine exposure.

In summary, using a systematic genome-wide approach, we show that DNAm at specific CpGs mediates a considerable proportion of the associations between prenatal famine exposure and later-life adiposity and serum TG levels. Our data are consistent with the hypothesis that the associations between exposure to an adverse environment during early development and health outcomes in adulthood are mediated by epigenetic factors. The specific causal mechanism awaits elucidation.

MATERIALS AND METHODS

Study setting

The Dutch Hunger Winter was a 6-month famine at the end of World War II that resulted from a combination of punitive measures imposed

by occupying German forces after a national railway strike, winter conditions, and fuel shortages related to war operations. Food rations were distributed centrally and rapidly dropped to below 900 kcal/day between 26 November 1944 and 15 May 1945. After 15 May, rations rapidly returned to pre-famine levels. The percentage of calories from proteins, fat, and carbohydrates in the diet was relatively constant as the food rations diminished (17, 58).

Study subjects

The Dutch Hunger Winter Families study is described in detail elsewhere (24). We identified 2417 singleton births between 1 February 1945 and 31 March 1946 at three institutions in famine-exposed cities in the western Netherlands whose mothers were exposed to the famine during or immediately preceding that pregnancy. We selected time controls born in 1943 or in 1947 from the same clinics. We also asked whether a same-sex sibling not exposed to the famine would be willing to participate as a sibling control. Both the famine-exposed and the time controls can therefore have a same-sex sibling as family control. Overall, 1075 interviews and 971 clinical examinations were performed six decades after the exposure. Following the Helsinki guidelines, we obtained ethical approval, both from the Institutional Review Board of Columbia University Medical Center and from the Medical Ethical Committee of the Leiden University Medical Center. The study participants provided verbal consent in a telephone interview, and in case of clinical examinations, a written informed consent was obtained.

Famine exposure definitions

We defined famine exposure by the number of weeks during which the mother was exposed to <900 kcal/day after the last menstrual period (LMP) recorded on the birth record. Missing or implausible LMP records (12%) were (re-)estimated from the birth weights and the date of birth (24). We considered somebody exposed to famine in gestational weeks 1 to 10, 11 to 20, 21 to 30, or 31 to delivery if such a gestational time window was entirely contained within this period and had an average exposure of <900 kcal/day during this 10-week period. As a result of the 6-month duration, some individuals were exposed to two adjacent 10-week periods. In short, pregnancies with an LMP between 26 November 1944 and 4 March 1945 were exposed in weeks 1 to 10, those with an LMP between 18 September 1944 and 24 December 1944 were exposed in weeks 11 to 20, those with an LMP between 10 July 1944 and 15 October 1944 were exposed in weeks 21 to 30, and those with an LMP between 2 May 1944 and 24 August 1944 were exposed in weeks 31 to delivery. We defined individuals exposed in any of these periods as “famine-exposed,” and those exposed in gestational weeks 1 to 10 were defined as early exposed. In addition, individuals with an LMP between 1 February and 12 May 1945 were exposed to an average of <900 kcal/day for 10 weeks before conception and were defined as the preconception exposure group.

Characteristics

Medical examinations were scheduled early in the morning under fasting conditions. Measurement of height was carried out to the nearest millimeter using a portable stadiometer (Seca), and body weight was measured to the nearest 100 g by a portable scale (Seca). BMI was calculated from these measures. A blood draw was performed at the start of a 75-g oral glucose test, and glucose was quickly assessed in serum by hexokinase reaction on a Modular P800 (Roche). Cholesterol measures were reported earlier (19) and were assessed using standard enzymatic assays. LDL-C was calculated for individuals with a TG con-

centration lower than 400 mg/dl using the Friedewald formula. Dietary intake in the last 12 months was ascertained from a 140-item food frequency questionnaire developed to assess dietary habits in an elderly Dutch population (59). This questionnaire provided estimates of macronutrient intake (total energy and the percentage of fat, protein, and carbohydrate thereof). As a measure of SES, we classified study participants on a five-level education scale, identifying individuals with primary, lower- or middle-level vocational, secondary, higher vocational, and university education.

DNAm data

DNAm was measured using the Illumina Infinium Human Methylation 450k BeadChip, and preprocessing was previously described by us in detail (28). Briefly, samples were randomly distributed, ensuring similar distributions of exposure periods, sex ratios, and mean ages per 96-well plate and 450k array, keeping sibling pairs together, but were randomly assigned to either the left or right column of the 450k array. We assessed data quality using both sample-dependent and sample-independent quality metrics using the R package MethylAid (60). Bisulfite conversion efficiency was assessed using the dedicated 450k probes and sequencing the *IGF2* DMR0 of a random set of samples. We re-measured a subset of the genotypes measured on the 450k array with MassARRAY and checked the gender of samples using all X-chromosomal CpGs to exclude sample swaps. We used noob and Functional Normalization as implemented in the minfi package (61) using six principal components to normalize for batch effects, dye color intensity differences, and background signal. Individual measurements with a detection *P* value of >0.01 or zero-intensity value in one of the used color channels were set as missing. The measurement success rate per sample was >99%. Next, we removed a-specific/polymorphic and non-autosomal probes, probes with <95% success rate, and those probes that were completely methylated or unmethylated in all major cell types in whole blood. Methylation percentages in text, figures, and tables reflect microarray β -value estimates (which range from close to zero to close to one or 0 to 100%, as denoted throughout). For the individuals for whom we have genome-wide DNAm data (Illumina 450k array), 348 individuals met our definition of famine exposure, of whom 73 also meet the definition of exposure during weeks 1 through 10 of gestation (early exposure). In total, 94 individuals met our preconception exposure definition. In addition, we have 463 individuals with no famine exposure directly before conception and during gestation. DNAm data are available upon request.

In addition, we used DNAm data from 16 obductions (31, 32) from which samples were collected within 12 hours of death (mean age, 62.8 years). In concordance with the ethical guidelines in the Code for Proper Secondary Use of Human Tissue in the Netherlands (Dutch Federation of Medical Scientific Societies), these samples were anonymized, and raw data have been deposited in the National Center for Biotechnology Information's Gene Expression Omnibus (GSE78743). To explore the relation with gene expression and validate associations with BMI or TG, we referred to the DNAm data of 3296 individuals (30) measured within the Genome of the Netherlands reference project [GoNL; deposited at the European Genome-phenome Archive (EGA) under accession number EGAC00001000277]. Preprocessing and normalization were done as described above for both data sets. R Code for the quality control and normalization is provided at <https://git.lumc.nl/molepi/DNAmArray>.

Gene expression data

We used RNA-seq data created from total RNA extracted from whole blood using the TruSeq v2 library protocol and 2 × 50–base pair paired-end

sequencing on an Illumina HiSeq2000 for 2044 of the 3296 individuals for which we have DNAm data from the GoNL reference project (likewise under EGA accession number EGAC00001000277). Data processing is detailed elsewhere (29) and consisted in removal of bar-coded adapters, low-quality reads, alignment against genome build NCBI37, and gene-annotation Ensembl v.71, normalization, and GC-bias correction.

Statistics

All analyses were performed in the R programming environment (R.3.2.2). Reanalysis of the associations between phenotypes and famine exposure was performed with linear mixed-effects models (LMMs) with one of the phenotypes (BMI, TG, glucose, and LDL-C) as the dependent variable using the R *lme4* package (62). The sibling-pair identifier was included as a random effect, and where appropriate, we corrected for gender and age at examination. We used the restricted maximum likelihood method and variance components for the covariance matrix structure. The degree of freedom (df) for a variable of interest was calculated with Satterthwaite's approximation, as implemented in the R package *lmerTest* (63). The R^2 for the LMMs was assessed using the R *MuMIn* package (64). In line with previous reports (19, 20, 23, 65, 66), we included statin usage when assessing cholesterol variables, excluded nonfasting individuals for the cholesterol analyses, and excluded individuals with diagnosed diabetes (and therefore on medication) before the clinical examinations for the analyses of fasting serum glucose levels.

For their robustness, we used generalized estimating equations as implemented in the R *geepack* package (67) for the series of EWAS for potential mediators. We used a Gaussian link function to model DNAm (reflected by the 450k array β value). In each EWAS, we added the following as covariates: gender, age at examination (scaled and centered), row on the 450k array, one variable denoting the batch (unique combination of bisulfite conversion plate and scan batch), the first three principal variance components as a proxy measure for cell heterogeneity, and, where appropriate, additional corrections specific for the phenotype of interest (BMI, TG, and glucose). We controlled for correlation within sibships in the GEE, thereby addressing (unmeasured) confounding on the familial level. We compared this model with an extension additionally containing both the phenotype of interest and a zero-one variable denoting the famine exposure status. Model fits were compared using analysis of variance (ANOVA), yielding a χ^2 statistic for evaluation (df = 2). Each EWAS was corrected for genome-wide inflation by dividing the χ^2 statistic by the inflation factor (λ) (68), and results were adjusted for multiple testing using false discovery rate (FDR) correction (69) where appropriate. The λ ranged between 1.12 and 1.19. Inflation was caused by the fact that sibling pairs were measured on the same microarrays (28). When sibling pairs and unrelated individuals are analyzed separately, the λ is close to one.

To quantify the mediation effect of DNAm, we performed model-based mediation analysis using the method originally developed by Imai *et al.* (25) in the R mediation package (26), which implements LMM and other advanced statistical models in a causal mediation testing framework. Mediation analysis on multiple CpGs was simultaneously performed on the mean of the standardized β values that were multiplied by the directionality of the association for each CpG (times -1 for negative relationships between DNAm and famine exposure and the later-life phenotype). We report on the $\beta_{\text{mediation}}$, more often referred to as the estimate of the indirect/mediation path or " $a \times b$ " effect, and the

proportion mediated, the percentage of the total effect on the outcome explained by the indirect/mediation path. CIs and test statistics for these measures were estimated by 10,000 Monte Carlo simulations.

DNAm was linked to gene expression in cis (<100 kb) by first performing an EWAS using the R package *CATE* (70) with DNAm of one mediating CpG as the dependent variable and correcting for age and gender and five latent variables (using the "ed" eigenvalue difference method). Possible inflation and bias inherent to the correlation structure of both DNAm and gene expression data were corrected using the R package *bacon* (71). Corrected estimates, standard errors, and test statistics for only those genes within 100 kb were then assessed and corrected by FDR for multiple testing. All P values reported were two-sided.

SUPPLEMENTARY MATERIALS

Supplementary material for this article is available at <http://advances.sciencemag.org/cgi/content/full/4/1/eaao4364/DC1>

- fig. S1. Quantile-quantile (QQ) plots for EWAS on famine exposure and phenotypes.
- fig. S2. QQ plots for EWAS on early exposure and phenotypes.
- fig. S3. Correlation between tissues for the nine mediating CpG dinucleotides.
- table S1. Associations with gene expression and phenotypes.
- table S2. Genome-wide screen for potential mediators: famine exposure and TG.
- table S3. Early exposure.
- table S4. Genome-wide screen for potential mediators: early exposure and triglycerides.
- Reference (75)

REFERENCES AND NOTES

1. D. J. P. Barker, *Fetal and Infant Origins of Adult Disease* (British Medical Journal, 1992).
2. P. Rinaudo, E. Wang, Fetal programming and metabolic syndrome. *Annu. Rev. Physiol.* **74**, 107–130 (2012).
3. R. A. Waterland, K. B. Michels, Epigenetic epidemiology of the developmental origins hypothesis. *Annu. Rev. Nutr.* **27**, 363–388 (2007).
4. R. Jaenisch, A. Bird, Epigenetic regulation of gene expression: How the genome integrates intrinsic and environmental signals. *Nat. Genet.* **33**, 245–254 (2003).
5. I. Bogdarina, A. Haase, S. Langley-Evans, A. J. Clark, Glucocorticoid effects on the programming of AT1b angiotensin receptor gene methylation and expression in the rat. *PLOS ONE* **5**, e9237 (2010).
6. R. A. Waterland, R. L. Jirtle, Transposable elements: Targets for early nutritional effects on epigenetic gene regulation. *Mol. Cell. Biol.* **23**, 5293–5300 (2003).
7. C. Allard, V. Desgagné, J. Patenaude, M. Lacroix, L. Guillemette, M. C. Battista, M. Doyon, J. Ménard, J. L. Ardilouze, P. Perron, L. Bouchard, M. F. Hivert, Mendelian randomization supports causality between maternal hyperglycemia and epigenetic regulation of leptin gene in newborns. *Epigenetics* **10**, 342–351 (2015).
8. P. Dominguez-Salas, S. E. Moore, M. S. Baker, A. W. Bergen, S. E. Cox, R. A. Dyer, A. J. Fulford, Y. Guan, E. Laritsky, M. J. Silver, G. E. Swan, S. H. Zeisel, S. M. Innis, R. A. Waterland, A. M. Prentice, B. J. Hennig, Maternal nutrition at conception modulates DNA methylation of human metastable epialleles. *Nat. Commun.* **5**, 3746 (2014).
9. F. Guénard, Y. Deshaies, K. Cianflone, J. G. Kral, P. Marceau, M.-C. Vohl, Differential methylation in glucoregulatory genes of offspring born before vs. after maternal gastrointestinal bypass surgery. *Proc. Natl. Acad. Sci. U.S.A.* **110**, 11439–11444 (2013).
10. B. T. Heijmans, E. W. Tobin, A. D. Stein, H. Putter, G. J. Blauw, E. S. Susser, P. E. Slagboom, L. H. Lumey, Persistent epigenetic differences associated with prenatal exposure to famine in humans. *Proc. Natl. Acad. Sci. U.S.A.* **105**, 17046–17049 (2008).
11. R. Joehanes, A. C. Just, R. E. Marioni, L. C. Pilling, L. M. Reynolds, P. R. Mandaviya, W. Guan, T. Xu, C. E. Elks, S. Aslibekyan, H. Moreno-Macias, J. A. Smith, J. A. Brody, R. Dingra, P. Yousefi, J. S. Pankow, S. Kunze, S. H. Shah, A. F. McRae, K. Lohman, J. Sha, D. M. Absher, L. Ferrucci, W. Zhao, E. W. Demerath, J. Bressler, M. L. Grove, T. Huan, C. Liu, M. M. Mendelson, C. Yao, D. P. Kiel, A. Peters, R. Wang-Sattler, P. M. Visscher, N. R. Wray, J. M. Starr, J. Ding, C. J. Rodriguez, N. J. Wareham, M. R. Irvin, D. Zhi, M. Barrdahl, P. Vineis, S. Ambatipudi, A. G. Uitterlinden, A. Hofman, J. Schwartz, E. Colicino, L. Hou, P. S. Vokonas, D. G. Hernandez, A. B. Singleton, S. Bandinelli, S. T. Turner, E. B. Ware, A. K. Smith, T. Klengel, E. B. Binder, B. M. Psaty, K. D. Taylor, S. A. Gharib, B. R. Swenson, L. Liang, D. L. DeMeo, G. T. O'Connor, Z. Herceg, K. J. Ressler, K. N. Conneely, N. Sotoodehnia, S. L. Kardia, D. Melzer, A. A. Baccarelli, J. B. van Meurs, I. Romieu, D. K. Arnett, K. K. Ong, Y. Liu, M. Waldenberger, I. J. Deary, M. Fornage, D. Levy,

- S. J. London, Epigenetic signatures of cigarette smoking. *Circ. Cardiovasc. Genet.* **9**, 436–447 (2016).
12. A. Soubry, S. K. Murphy, Z. Huang, A. Murtha, J. M. Schildkraut, R. L. Jirtle, F. Wang, J. Kurtzberg, W. Demark-Wahnefried, M. R. Forman, C. Hoyo, The effects of depression and use of antidepressive medicines during pregnancy on the methylation status of the *IGF2* imprinted control regions in the offspring. *Clin. Epigenetics* **3**, 2 (2011).
 13. L. Cao-Lei, K. N. Dancause, G. Elgbeili, R. Massart, M. Szyf, A. Liu, D. P. Laplante, S. King, DNA methylation mediates the impact of exposure to prenatal maternal stress on BMI and central adiposity in children at age 13½ years: Project Ice Storm. *Epigenetics* **10**, 749–761 (2015).
 14. L. Cao-Lei, F. Veru, G. Elgbeili, M. Szyf, D. P. Laplante, S. King, DNA methylation mediates the effect of exposure to prenatal maternal stress on cytokine production in children at age 13½ years: Project Ice Storm. *Clin. Epigenetics* **8**, 54 (2016).
 15. L. K. Küpers, X. Xu, S. A. Jankipersadsing, A. Vaez, G. S. la Bastide-van, S. Scholtens, I. M. Nolte, R. C. Richmond, C. L. Relton, J. F. Felix, L. Duijts, J. B. van Meurs, H. Tiemeier, V. W. Jaddoe, X. Wang, E. Corpeleijn, H. Snieder, DNA methylation mediates the effect of maternal smoking during pregnancy on birthweight of the offspring. *Int. J. Epidemiol.* **44**, 1224–1237 (2015).
 16. R. M. Reynolds, G. H. Jacobsen, A. J. Drake, What is the evidence in humans that DNA methylation changes link events in utero and later life disease? *Clin. Endocrinol.* **78**, 814–822 (2013).
 17. G. C. E. Burger, J. C. Drummond, H. R. Sandstead, in *Malnutrition and Starvation in Western Netherlands, September 1944–July 1945*, vol. 1 (General State Printing Office, 1948).
 18. L. H. Lumey, A. D. Stein, E. Susser, Prenatal famine and adult health. *Annu. Rev. Public Health* **32**, 237–262 (2011).
 19. L. H. Lumey, A. D. Stein, H. S. Kahn, J. A. Romijn, Lipid profiles in middle-aged men and women after famine exposure during gestation: The Dutch Hunger Winter Families Study. *Am. J. Clin. Nutr.* **89**, 1737–1743 (2009).
 20. L. H. Lumey, A. D. Stein, H. S. Kahn, Food restriction during gestation and impaired fasting glucose or glucose tolerance and type 2 diabetes mellitus in adulthood: Evidence from the Dutch Hunger Winter Families Study. *J. Dev. Orig. Health Dis.* **1**, S164 (2009).
 21. A. C. Ravelli, J. H. van der Meulen, R. P. Michels, C. Osmond, D. J. Barker, C. N. Hales, O. P. Bleker, Glucose tolerance in adults after prenatal exposure to famine. *Lancet* **351**, 173–177 (1998).
 22. A. C. Ravelli, J. H. van der Meulen, C. Osmond, D. J. Barker, O. P. Bleker, Obesity at the age of 50 y in men and women exposed to famine prenatally. *Am. J. Clin. Nutr.* **70**, 811–816 (1999).
 23. A. D. Stein, H. S. Kahn, A. Rundle, P. A. Zybert, K. van der Pal-de Bruin, L. H. Lumey, Anthropometric measures in middle age after exposure to famine during gestation: Evidence from the Dutch famine. *Am. J. Clin. Nutr.* **85**, 869–876 (2007).
 24. L. H. Lumey, A. D. Stein, H. S. Kahn, van der Pal-de Bruin KM, G. J. Blauw, P. A. Zybert, E. S. Susser, Cohort profile: The Dutch Hunger Winter families study. *Int. J. Epidemiol.* **36**, 1196–1204 (2007).
 25. K. Imai, L. Keele, D. Tingley, A general approach to causal mediation analysis. *Psychol. Methods* **15**, 309–334 (2010).
 26. D. Tingley, T. Yamamoto, K. Hirose, L. Keele, K. Imai, mediation: R Package for Causal Mediation Analysis. *J. Stat. Softw.* **59**, 1–38 (2014).
 27. T. J. Roseboom, R. C. Painter, A. F. van Abeelen, M. V. Veenendaal, S. R. de Rooij, Hungry in the womb: What are the consequences? Lessons from the Dutch famine. *Maturitas* **70**, 141–145 (2011).
 28. E. W. Tobi, R. C. Sliker, A. D. Stein, H. E. Suchiman, P. E. Slagboom, E. W. van Zwet, B. T. Heijmans, L. H. Lumey, Early gestation as the critical time-window for changes in the prenatal environment to affect the adult human blood methylome. *Int. J. Epidemiol.* **44**, 1211–1223 (2015).
 29. M. J. Bonder, R. Luijk, D. V. Zernakova, M. Moed, P. Deelen, M. Vermaat, M. van Iterson, F. van Dijk, M. van Galen, J. Bot, R. C. Sliker, P. M. Jhamai, M. Verbiest, H. E. Suchiman, M. Verkerk, R. van der Breggen, J. van Rooij, N. Lakenberg, W. Arindrarto, S. M. Kielbasa, I. Jonkers, P. van 't Hof, I. Nooren, M. Beekman, J. Deelen, D. van Heemst, A. Zernakova, E. F. Tigchelaar, M. A. Swertz, A. Hofman, A. G. Uitterlinden, R. Pool, J. van Dongen, J. J. Hottenga, C. D. Stehouwer, C. J. van der Kallen, C. G. Schalkwijk, L. H. van den Berg, E. W. van Zwet, H. Mei, Y. Li, M. Lemire, T. J. Hudson; BIOS Consortium, P. van Slagboom, C. Wijmenga, C. M. van Duijn, M. M. van Greevenbroek, C. M. van Duijn, D. I. Boomsma, A. Isaacs, R. Jansen, J. B. van Meurs, P. A. 't Hoen, L. Franke, B. T. Heijmans, Disease variants alter transcription factor levels and methylation of their binding sites. *Nat. Genet.* **49**, 131–138 (2016).
 30. K. F. Dekkers, M. van Iterson, R. C. Sliker, M. H. Moed, M. J. Bonder, M. van Galen, H. Mei, D. V. Zernakova, L. H. van den Berg, J. Deelen, J. van Dongen, D. van Heemst, A. Hofman, J. J. Hottenga, C. J. van der Kallen, C. G. Schalkwijk, C. D. Stehouwer, E. F. Tigchelaar, A. G. Uitterlinden, G. Willemsen, A. Zernakova, L. Franke, P. A. 't Hoen, R. Jansen, J. van Meurs, D. I. Boomsma, C. M. van Duijn, M. M. van Greevenbroek, J. H. Veldink, C. Wijmenga; BIOS Consortium, E. W. van Zwet, P. E. Slagboom, J. W. Jukema, B. T. Heijmans, Blood lipids influence DNA methylation in circulating cells. *Genome Biol.* **17**, 138 (2016).
 31. C. L. Relton, T. Gaunt, W. McArdle, K. Ho, A. Duggirala, H. Shihab, G. Woodward, O. Lyttleton, D. M. Evans, W. Reik, Y.-L. Paul, G. Ficz, S. E. Ozanne, A. Wipat, K. Flanagan, A. Lister, B. T. Heijmans, S. M. Ring, G. Davey Smith, Data resource profile: Accessible resource for integrated epigenomic studies (ARIES). *Int. J. Epidemiol.* **44**, 1181–1190 (2015).
 32. R. C. Sliker, S. D. Bos, J. J. Goeman, J. V. Bovee, R. P. Talens, R. van der Breggen, H. E. Suchiman, E.-W. Lameijer, H. Putter, E. B. van den Akker, Y. Zhang, J. W. Jukema, P. E. Slagboom, I. Meulenbelt, B. T. Heijmans, Identification and systematic annotation of tissue-specific differentially methylated regions using the Illumina 450k array. *Epigenetics Chromatin* **6**, 26 (2013).
 33. S. Wahl, A. Drong, B. Lehne, M. Loh, W. R. Scott, S. Kunze, P.-C. Tsai, J. S. Ried, W. Zhang, Y. Yang, S. Tan, G. Fiorito, L. Franke, S. Guarrera, S. Kasela, J. Kriebel, R. C. Richmond, M. Adamo, U. Afzal, M. Ala-Korpela, B. Albeti, O. Ammerpohl, J. F. Apperley, M. Beekman, P. A. Bertazzi, S. L. Black, C. Blancher, M.-J. Bonder, M. Brosch, M. Carstensen-Kirberg, A. J. M. de Craen, S. de Lusignan, A. Dehghan, M. Elkalawy, K. Fischer, O. H. Franco, T. R. Gaunt, J. Hampe, M. Hashemi, A. Isaacs, A. Jenkinson, S. Jha, N. Kato, V. Krogh, M. Laffan, C. Meisinger, T. Meitinger, Z. Y. Mok, V. Motta, H. K. Ng, Z. Nikolakopoulou, G. Nteliopoulou, S. Panico, N. Pervjakova, H. Prokisch, W. Rathmann, M. Roden, F. Rota, M. A. Rozario, J. K. Sandling, C. Schafmayer, K. Schramm, R. Siebert, P. E. Slagboom, P. Soininen, L. Stolk, K. Strauch, E.-S. Tai, L. Tarantini, B. Thorand, E. F. Tigchelaar, R. Tumino, A. G. Uitterlinden, C. van Duijn, J. B. J. van Meurs, P. Vineis, A. R. Wickremasinghe, C. Wijmenga, T.-P. Yang, W. Yuan, A. Zernakova, R. L. Batterham, G. Davey Smith, P. Deloukas, B. T. Heijmans, C. Herder, A. Hofman, C. M. Lindgren, L. Milani, P. van der Harst, A. Peters, T. Illig, C. L. Relton, M. Waldenberger, M.-R. Jarvelin, V. Bollati, R. Soong, T. D. Spector, J. Scott, M. I. McCarthy, P. Elliott, J. T. Bell, G. Matullo, C. Gieger, J. S. Kooner, H. Grallert, J. C. Chambers, Epigenome-wide association study of body mass index, and the adverse outcomes of adiposity. *Nature* **541**, 81–86 (2017).
 34. W. A. Al Mufteh, M. Al-Shafai, S. B. Zaghlool, A. Visconti, P.-C. Tsai, P. Kumar, T. Spector, J. Bell, M. Falchi, K. Suhre, Epigenetic associations of type 2 diabetes and BMI in an Arab population. *Clin. Epigenetics* **8**, 13 (2016).
 35. E. W. Demerath, W. Guan, M. L. Grove, S. Aslibekyan, M. Mendelson, Y.-H. Zhou, Å. K. Hedman, J. K. Sandling, L.-A. Li, M. R. Irvin, D. Zhi, P. Deloukas, L. Liang, C. Liu, J. Bressler, T. D. Spector, K. North, Y. Li, D. M. Absher, D. Levy, D. K. Arnett, M. Forjane, J. S. Pankow, E. Boerwinkle, Epigenome-wide association study (EWAS) of BMI, BMI change and waist circumference in African American adults identifies multiple replicated loci. *Hum. Mol. Genet.* **24**, 4464–4479 (2015).
 36. K. J. Dick, C. P. Nelson, L. Tsaprouni, J. K. Sandling, D. Aïssi, S. Wahl, E. Meduri, P.-E. Morange, F. Gagnon, H. Grallert, M. Waldenberger, A. Peters, J. Erdmann, C. Hengstenberg, F. Cambien, A. H. Goodall, W. H. Ouweland, H. Schunkert, J. R. Thompson, T. D. Spector, C. Gieger, D.-A. Trégouët, P. Deloukas, N. J. Samani, DNA methylation and body-mass index: A genome-wide analysis. *Lancet* **383**, 1990–1998 (2014).
 37. L. H. Chadwick, The NIH roadmap epigenomics program data resource. *Epigenomics* **4**, 317–324 (2012).
 38. Z. Beharry, S. Mahajan, M. Zemskova, Y.-W. Lin, B. G. Tholanikunnel, Z. Xia, C. D. Smith, A. S. Kraft, The Pim protein kinases regulate energy metabolism and cell growth. *Proc. Natl. Acad. Sci. U.S.A.* **108**, 528–533 (2011).
 39. I. Aksoy, C. Sakabedoyan, P.-Y. Bourillot, A. B. Malashicheva, J. Mancip, K. Knoblauch, M. Afanassieff, P. Savatier, Self-renewal of murine embryonic stem cells is supported by the serine/threonine kinases Pim-1 and Pim-3. *Stem Cells* **25**, 2996–3004 (2007).
 40. G. Vlacich, M. C. Nawijn, G. C. Webb, D. F. Steiner, Pim3 negatively regulates glucose-stimulated insulin secretion. *Islets* **2**, 308–317 (2010).
 41. C. Soriano-Tárraga, J. Jiménez-Conde, E. Giral-Steinhauer, M. Mola-Caminal, R. M. Vivanco-Hidalgo, A. Ois, A. Rodríguez-Campello, E. Cuadrado-Godia, S. Sayols-Baixeras, R. Elosua, J. Roquer; GENESTROKE Consortium, Epigenome-wide association study identifies TXNIP gene associated with type 2 diabetes mellitus and sustained hyperglycemia. *Hum. Mol. Genet.* **25**, 609–619 (2016).
 42. I. Florath, K. Butterbach, J. Heiss, M. Bewerunge-Hudler, Y. Zhang, B. Schöttker, H. Brenner, Type 2 diabetes and leucocyte DNA methylation: An epigenome-wide association study in over 1,500 older adults. *Diabetologia* **59**, 130–138 (2016).
 43. J. C. Chambers, M. Loh, B. Lehne, A. Drong, J. Kriebel, V. Motta, S. Wahl, H. R. Elliott, F. Rota, W. R. Scott, W. Zhang, S.-T. Tan, G. Campanella, M. Chadeau-Hyam, L. Yengo, R. C. Richmond, M. Adamowicz-Brice, U. Afzal, K. Bozaoglu, Z. Y. Mok, H. K. Ng, F. Pattou, H. Prokisch, M. A. Rozario, L. Tarantini, J. Abbott, M. Ala-Korpela, B. Albeti, O. Ammerpohl, P. A. Bertazzi, C. Blancher, R. Caiazzo, J. Danesh, T. R. Gaunt, S. de Lusignan, C. Gieger, T. Illig, S. Jha, S. Jones, J. Jowett, A. J. Kangas, A. Kasturiratne, N. Kato, N. Kotea, S. Kowlessur, J. Pitkaniemi, P. Punjabi, D. Saleheen, C. Schafmayer, P. Soininen, E.-S. Tai, B. Thorand, J. Tuomilehto, A. R. Wickremasinghe, S. A. Kyrtopoulos, T. J. Aitman, C. Herder, J. Hampe, S. Cauchi, C. L. Relton, P. Froguel, R. Soong, P. Vineis, M.-R. Jarvelin, J. Scott, H. Grallert, V. Bollati, P. Elliott, M. I. McCarthy, J. S. Kooner, Epigenome-wide

- association of DNA methylation markers in peripheral blood from Indian Asians and Europeans with incident type 2 diabetes: A nested case-control study. *Lancet Diabetes Endocrinol.* **3**, 526–534 (2015).
44. A.-K. Petersen, S. Zeilinger, G. Kastenmüller, W. Römisch-Margl, M. Brügger, A. Peters, C. Meisinger, K. Strauch, C. Hengstenberg, P. Pagel, F. Huber, R. P. Mohnhey, H. Grallert, T. Illig, J. Adamski, M. Waldenberger, C. Gieger, K. Suhre, Epigenetics meets metabolomics: An epigenome-wide association study with blood serum metabolic traits. *Hum. Mol. Genet.* **23**, 534–545 (2014).
 45. B. R. Joubert, J. F. Felix, P. Yousefi, K. M. Bakulski, A. C. Just, C. Breton, S. E. Reese, C. A. Markunas, R. C. Richmond, C. J. Xu, L. K. Küpers, S. S. Oh, C. Hoyo, O. Gruzieva, C. Söderhäll, L. A. Salas, N. Baiz, H. Zhang, J. Lepeule, C. Ruiz, S. Ligthart, T. Wang, J. A. Taylor, L. Duijts, G. C. Sharp, S. A. Jankipersadsing, R. M. Nilsen, A. Vaez, M. D. Fallin, D. Hu, A. A. Litonjua, B. F. Fuemmeler, K. Huen, J. Kere, I. Kull, M. C. Munthe-Kaas, U. Gehring, M. Bustamante, M. J. Saurel-Coubizolles, B. M. Quraishi, J. Ren, J. Tost, J. R. Gonzalez, M. J. Peters, S. E. Häberg, Z. Xu, J. B. van Meurs, T. R. Gaunt, M. Kerkhof, E. Corpeleijn, A. P. Feinberg, C. Eng, A. A. Baccarelli, S. E. Benjamin Neelon, A. Bradman, S. K. Merid, A. Bergström, Z. Herceg, H. Hernandez-Vargas, B. Brunekreef, M. Pinart, B. Heude, S. Ewart, J. Yao, N. Lemonnier, O. H. Franco, M. C. Wu, A. Hofman, W. McArdle, P. Van der Vlies, F. Falahi, M. W. Gillman, L. F. Barcellos, A. Kumar, M. Wickman, S. Guerra, M.-A. Charles, J. Holloway, C. Auffray, H. W. Tiemeier, G. D. Smith, D. Postma, M. F. Hivert, B. Eskenazi, M. Vrijheid, H. Arshad, J. M. Antó, A. Dehghan, W. Karmaus, I. Annesi-Maesano, J. Sunyer, G. Ghantous, G. Pershagen, N. Holland, S. K. Murphy, D. L. DeMeo, E. G. Burckhardt, C. Ladd-Acosta, H. Snieder, H. Nystad, G. H. Koppelman, C. L. Relton, V. W. Jaddoe, A. Wilcox, E. Melén, S. J. London, DNA methylation in newborns and maternal smoking in pregnancy: Genome-wide consortium meta-analysis. *Am. J. Hum. Genet.* **98**, 680–696 (2016).
 46. S. Shah, M. J. Bonder, R. E. Marioni, Z. Zhu, A. F. McRae, A. Zernakova, S. E. Harris, D. Liewald, A. K. Henders, M. M. Mendelson, C. Liu, R. Joehanes, L. Liang, BIOS Consortium, D. Levy, N. G. Martin, J. M. Starr, C. Wijmenga, N. R. Wray, J. Yang, G. W. Montgomery, L. Franke, I. J. Deary, P. M. Visscher, Improving phenotypic prediction by combining genetic and epigenetic associations. *Am. J. Hum. Genet.* **97**, 75–85 (2015).
 47. S. Jakkuraju, X. Zhe, D. Pan, R. Choudhury, L. Schuger, TIPs are tension-responsive proteins involved in myogenic versus adipogenic differentiation. *Dev. Cell* **9**, 39–49 (2005).
 48. R. P. Talens, D. I. Boomsma, E. W. Tobi, D. Kremer, J. W. Jukema, G. Willemsen, H. Putter, P. E. Slagboom, B. T. Heijmans, Variation, patterns, and temporal stability of DNA methylation: Considerations for epigenetic epidemiology. *FASEB J.* **24**, 3135–3144 (2010).
 49. L. Pfeiffer, S. Wahl, L. C. Pilling, E. Reischl, J. K. Sandling, S. Kunze, L. M. Holdt, A. Kretschmer, K. Schramm, J. Adamski, N. Klopp, T. Illig, Å. K. Hedman, M. Roden, D. G. Hernandez, A. B. Singleton, W. E. Thasler, H. Grallert, C. Gieger, C. Herder, D. Teupser, C. Meisinger, T. D. Spector, F. Kronenberg, H. Prokisch, D. Melzer, A. Peters, P. Deloukas, L. Ferrucci, M. Waldenberger, DNA methylation of lipid-related genes affects blood lipid levels. *Circ. Cardiovasc. Genet.* **8**, 334–342 (2015).
 50. E. W. Tobi, L. H. Lumey, R. P. Talens, D. Kremer, H. Putter, A. D. Stein, P. E. Slagboom, B. T. Heijmans, DNA methylation differences after exposure to prenatal famine are common and timing- and sex-specific. *Hum. Mol. Genet.* **18**, 4046–4053 (2009).
 51. E. W. Tobi, P. E. Slagboom, J. van Dongen, D. Kremer, A. D. Stein, H. Putter, B. T. Heijmans, L. H. Lumey, Prenatal famine and genetic variation are independently and additively associated with DNA methylation at regulatory loci within *IGF2/H19*. *PLOS ONE* **7**, e37933 (2012).
 52. E. W. Tobi, J. J. Goeman, R. Monajemi, H. Gu, H. Putter, Y. Zhang, R. C. Sliker, A. P. Stok, P. E. Thijssen, F. Muller, E. W. van Zwet, C. Bock, A. Meissner, L. H. Lumey, P. E. Eline, B. T. Slagboom, DNA methylation signatures link prenatal famine exposure to growth and metabolism. *Nat. Commun.* **5**, 5592 (2014).
 53. R. C. Richmond, G. Hemani, K. Tilling, G. Davey Smith, C. L. Relton, Challenges and novel approaches for investigating molecular mediation. *Hum. Mol. Genet.* **25**, R149–R156 (2016).
 54. C. Li, L. H. Lumey, Exposure to the Chinese famine of 1959–61 in early life and long-term health conditions: A systematic review and meta-analysis. *Int. J. Epidemiol.* **46**, 1157–1170 (2017).
 55. R. C. Richmond, N. J. Timpson, T. I. Sørensen, Exploring possible epigenetic mediation of early-life environmental exposures on adiposity and obesity development. *Int. J. Epidemiol.* **44**, 1191–1198 (2015).
 56. M. M. Mendelson, R. E. Marioni, R. Joehanes, C. Liu, Å. K. Hedman, S. Aslibekyan, E. W. Demerath, W. Guan, D. Zhi, C. Yao, T. Huan, C. Willinger, B. Chen, P. Courchesne, M. Multhaup, M. R. Irvin, A. Cohain, E. E. Schadt, M. L. Grove, J. Bressler, K. North, J. Sundström, S. Gustafsson, S. Shah, A. F. McRae, S. E. Harris, J. Gibson, P. Redmond, J. Corley, L. Murphy, J. M. Starr, E. Kleinbrink, L. Lipovich, P. M. Visscher, N. R. Wray, R. M. Krauss, D. Fallin, A. Feinberg, D. M. Absher, M. Fornage, J. S. Pankow, L. Lind, C. Fox, E. Ingelsson, D. K. Arnett, E. Boerwinkle, L. Liang, D. Levy, I. J. Deary, Association of body mass index with DNA methylation and gene expression in blood cells and relations to cardiometabolic disease: A Mendelian randomization approach. *PLOS Med.* **14**, e1002215 (2017).
 57. L. A. Cupul-Uicab, R. Skjaerven, K. Haug, G. S. Travlos, R. E. Wilson, M. Eggesbo, J. A. Hoppin, K. W. Whitworth, M. P. Longnecker, Exposure to tobacco smoke in utero and subsequent plasma lipids, ApoB, and CRP among adult women in the MoBa cohort. *Environ. Health Perspect.* **120**, 1532–1537 (2012).
 58. G. Trienekens, The food supply in The Netherlands during the Second World War, in *Food, Science, Policy and Regulation in the Twentieth Century: International and Comparative Perspectives*, D. F. Smith, J. Phillips, Eds. (Routledge, 2000), pp. 117–133.
 59. P. A. Grootenhuys, S. Westenbrink, C. M. Sie, J. N. de Neeling, F. J. Kok, L. M. Bouter, A semiquantitative food frequency questionnaire for use in epidemiologic research among the elderly: Validation by comparison with dietary history. *J. Clin. Epidemiol.* **48**, 859–868 (1995).
 60. M. van Iterson, E. W. Tobi, R. C. Sliker, W. den Hollander, R. Luijk, P. E. Slagboom, B. T. Heijmans, MethylAid: Visual and interactive quality control of large Illumina 450k datasets. *Bioinformatics* **30**, 3435–3437 (2014).
 61. M. J. Aryee, A. E. Jaffe, H. Corrada-Bravo, C. Ladd-Acosta, A. P. Feinberg, K. D. Hansen, R. A. Irizarry, Minfi: A flexible and comprehensive Bioconductor package for the analysis of Infinium DNA methylation microarrays. *Bioinformatics* **30**, 1363–1369 (2014).
 62. D. Bates, M. Machler, B. Bolker, S. Walker, Fitting linear mixed-effects models using lme4. *J. Stat. Softw.* **67**, 1–48 (2015).
 63. A. Kuznetsova, P. B. Brockhoff, R. H. B. Christensen, lmerTest: Tests in Linear Mixed Effects Models, 2.0-36 (2016); <https://cran.r-project.org/web/packages/lmerTest/index.html>.
 64. K. Barton, MuMIn: Multi-Model Inference, 1.15.6 (2016); <https://cran.r-project.org/web/packages/MuMIn/index.html>.
 65. A. D. Stein, A. Rundle, N. Wada, R. A. Goldbohm, L. H. Lumey, Associations of gestational exposure to famine with energy balance and macronutrient density of the diet at age 58 years differ according to the reference population used. *J. Nutr.* **139**, 1555–1561 (2009).
 66. A. D. Stein, F. H. Pierik, G. H. Verrips, E. S. Susser, L. H. Lumey, Maternal exposure to the Dutch famine before conception and during pregnancy: Quality of life and depressive symptoms in adult offspring. *Epidemiology* **20**, 909–915 (2009).
 67. U. Halekoh, S. Højsgaard, J. Yan, The R Package geepack for generalized estimating equations. *J. Stat. Softw.* **15**, 1–11 (2006).
 68. B. Devlin, K. Roeder, Genomic control for association studies. *Biometrics* **55**, 997–1004 (1999).
 69. Y. Benjamini, Y. Hochberg, Controlling the false discovery rate: A practical and powerful approach to multiple testing. *J. R. Stat. Soc.* **57**, 289–300 (1995).
 70. J. Wang, Q. Zhao, cate: High Dimensional Factor Analysis and Confounder Adjusted Multiple Testing and Estimation, 1.0.4 (2015); <https://cran.r-project.org/web/packages/cate/index.html>.
 71. M. van Iterson, E. W. van Zwet, BIOS Consortium, P. E. Slagboom, B. T. Heijmans, Controlling bias and inflation in epigenome- and transcriptome-wide association studies using the empirical null distribution. *Genome Biol.* **18**, 19 (2017).
 72. M. Das, J. Sha, B. Hidalgo, S. Aslibekyan, A. N. Do, D. Zhi, D. Sun, T. Zhang, S. Li, W. Chen, S. R. Srinivasan, H. K. Tiwari, D. Absher, J. M. Ordovas, G. S. Berenson, D. K. Arnett, M. R. Irvin, Association of DNA methylation at *CPT1A* locus with metabolic syndrome in the genetics of lipid lowering drugs and diet network (GOLDN) study. *PLOS ONE* **11**, e0145789 (2016).
 73. M. R. Irvin, D. Zhi, R. Joehanes, M. Mendelson, S. Aslibekyan, S. A. Claas, K. S. Thibeault, N. Patel, K. Day, L. W. Jones, L. Liang, B. H. Chen, C. Yao, H. K. Tiwari, J. M. Ordovas, D. Levy, D. Absher, D. K. Arnett, Epigenome-wide association study of fasting blood lipids in the Genetics of Lipid-lowering Drugs and Diet Network study. *Circulation* **130**, 565–572 (2014).
 74. M. Mamtani, H. Kulkarni, T. D. Dyer, H. H. Goring, J. L. Neary, S. A. Cole, J. W. Kent, S. Kumar, D. C. Glahn, M. C. Mahaney, A. G. Comuzzie, L. Almasy, J. E. Curran, R. Duggirala, J. Blangero, M. A. Carless, Genome- and epigenome-wide association study of hypertriglyceridemic waist in Mexican American families. *Clin. Epigenetics* **8**, 6 (2016).
 75. T. Rönn, P. Volkov, L. Gillberg, M. Kokosar, A. Perflyev, A. L. Jacobsen, S. W. Jørgensen, C. Bråns, P.-A. Jansson, K.-F. Eriksson, O. Pedersen, T. Hansen, L. Groop, E. Stener-Victorin, A. Vaag, E. Nilsson, C. Ling, Impact of age, BMI and HbA1c levels on the genome-wide methylation and mRNA expression patterns in human adipose tissue and identification of epigenetic biomarkers in blood. *Hum. Mol. Genet.* **24**, 3792–3813 (2015).

Acknowledgments: We express our gratitude to the participants of the Dutch Hunger Winter Families study, the staff of TNO Quality of Life, the staff of the Department of Gerontology and Geriatrics Study Center at the Leiden University Medical Center (LUMC), and the LUMC Central Clinical Chemical Laboratory. **Funding:** This study was supported by a VENI grant by the Netherlands Organization for Scientific Research (91617128 to E.W.T.), the U.S. National Institute of Aging (R01AG042190 to L.H.L. and B.T.H.), the European Union's Seventh Framework Program IDEAL (259679), and the U.S. NIH (R01-HL067914 to L.H.L.). The funders had no role in study design, data collection, analysis, decision to publish, or preparation of the manuscript. **Author contributions:** Conceptualization: E.W.T., L.H.L., and B.T.H. Methodology: E.W.T., K.M.X., and

E.W.v.Z. Investigation: E.W.T., R.C.S., A.D.S., and L.H.L. Formal analysis: E.W.T., R.L., and K.F.D. Validation: K.F.D. Software: E.W.T., R.L., and E.W.v.Z. Resources: A.D.S., Biobank-based Integrative Omics Studies (BIOS) Consortium, and L.H.L. Data curation: E.W.T., R.C.S., R.L., BIOS Consortium, A.D.S., and L.H.L. Writing (original draft): E.W.T., L.H.L., and B.T.H. Writing (review and editing): R.C.S., R.L., K.F.D., A.D.S., and P.E.S. Visualization: E.W.T., R.L., and K.F.D. Supervision: P.E.S., L.H.L., and B.T.H. Project administration: L.H.L. and B.T.H. Funding acquisition: E.W.T., P.E.S., L.H.L., and B.T.H. **Competing interests:** The authors declare that they have no competing interests. **Data and materials availability:** All data needed to evaluate the conclusions in the paper are present in the paper and/or the Supplementary Materials. Additional data related to this paper may be requested from the authors.

Members of the BIOS Consortium: Peter A. 't Hoen, René Pool, Marleen M. van Greevenbroek, Coen D. Stehouwer, Carla J. van der Kallen, Casper G. Schalkwijk, Cisca Wijmenga, Sasha Zhernakova, Ettje F. Tigchelaar, Marian Beekman, Joris Deelen, Diana van Heemst, Jan H. Veldink, Leonard H. van den Berg, Cornelia M. van Duijn, Albert Hofman, André G. Uitterlinden,

P. Mila Jhamai, Michael Verbiest, Marijn Verkerk, Ruud van der Breggen, Jeroen van Rooij, Nico Lakenberg, Hailiang Mei, Jan Bot, Dasha V. Zhernakova, Peter Van 't Hof, Patrick Deelen, Irene Nooren, Matthijs Moed, Martijn Vermaat, Marc Jan Bonder, Freerk van Dijk, Michiel van Galen, Wibowo Arindrarto, Szymon M. Kielbasa, Morris A. Swertz, Aaron Isaacs, and Lude Franke.

Submitted 21 July 2017
Accepted 3 January 2018
Published 31 January 2018
10.1126/sciadv.aao4364

Citation: E. W. Tobi, R. C. Slieker, R. Luijk, K. F. Dekkers, A. D. Stein, K. M. Xu, Biobank-based Integrative Omics Studies Consortium, P. E. Slagboom, E. W. van Zwet, L. H. Lumey, B. T. Heijmans, DNA methylation as a mediator of the association between prenatal adversity and risk factors for metabolic disease in adulthood. *Sci. Adv.* **4**, eaao4364 (2018).

DNA methylation as a mediator of the association between prenatal adversity and risk factors for metabolic disease in adulthood

Elmar W. Tobi, Roderick C. Sliker, René Luijk, Koen F. Dekkers, Aryeh D. Stein, Kate M. Xu, Biobank-based Integrative Omics Studies Consortium, P. Eline Slagboom, Erik W. van Zwet, L. H. Lumey and Bastiaan T. Heijmans

Sci Adv 4 (1), eaao4364.
DOI: 10.1126/sciadv.aao4364

ARTICLE TOOLS

<http://advances.sciencemag.org/content/4/1/eaao4364>

SUPPLEMENTARY MATERIALS

<http://advances.sciencemag.org/content/suppl/2018/01/29/4.1.eaao4364.DC1>

REFERENCES

This article cites 69 articles, 12 of which you can access for free
<http://advances.sciencemag.org/content/4/1/eaao4364#BIBL>

PERMISSIONS

<http://www.sciencemag.org/help/reprints-and-permissions>

Use of this article is subject to the [Terms of Service](#)