



Figures and figure supplements

A cellular and regulatory map of the GABAergic nervous system of *C. elegans*

Marie Gendrel et al

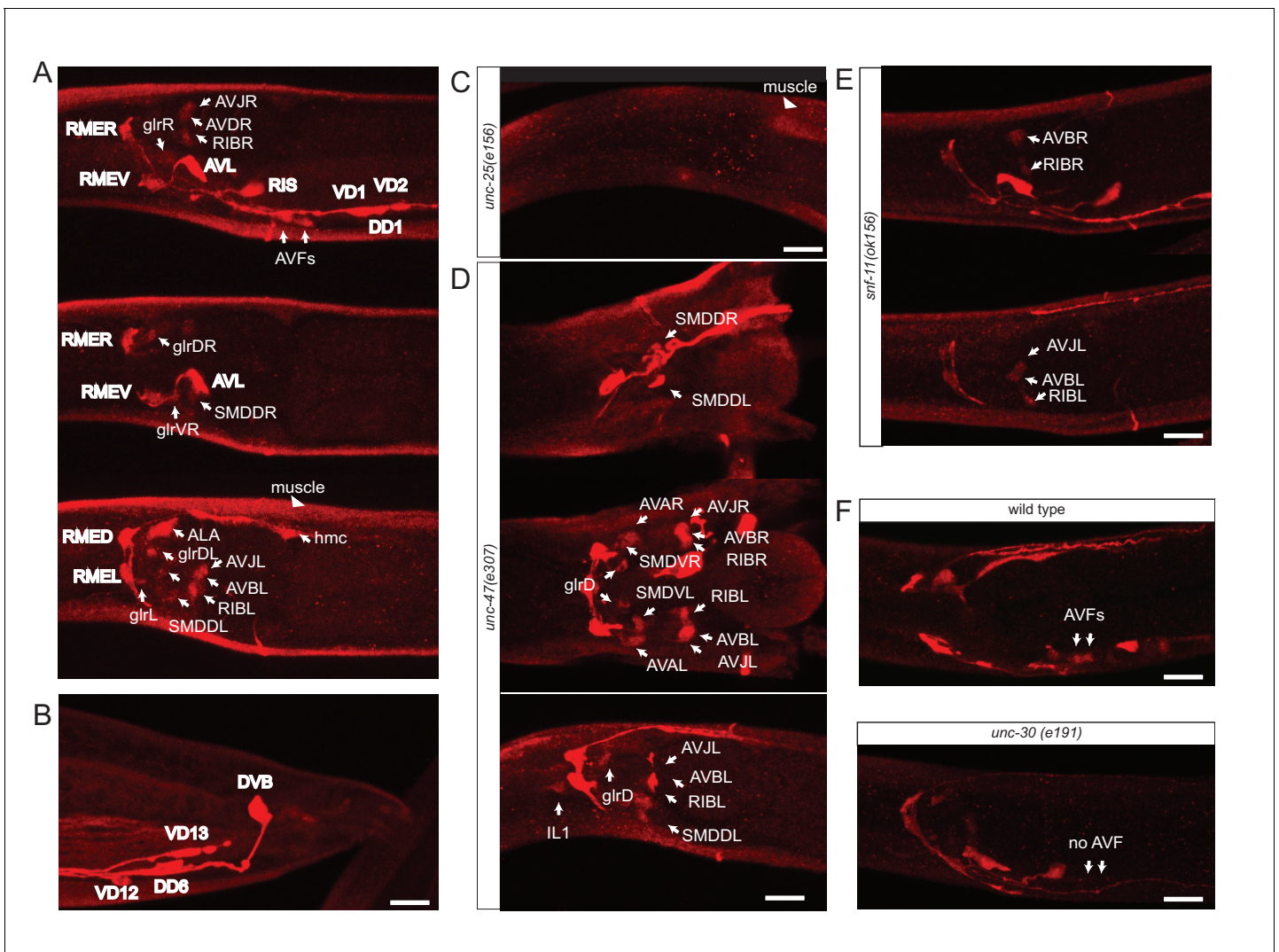


Figure 1. Anti-GABA staining defines the GABAergic nervous system of *C. elegans*. (A) Three different optical sections of the head of a single adult hermaphrodite, stained with anti-GABA antibodies. Previously identified GABA neurons (McIntire et al., 1993b) are shown in bold. (B) Anti-GABA staining in the tail of an adult hermaphrodite. (C) Anti-GABA staining in the head of an adult *unc-25/GAD(-)* hermaphrodite. Absence of GABA staining illustrates that GABA staining is specific. Staining in muscles is diminished but not eliminated completely. (D) Two different optical sections (ventral/dorsal) and a lateral view of the head of a GABA-stained adult *unc-47/VGAT(-)* hermaphrodite, which illustrates the dependence of some GABA-positive cells on vesicular GABA secretion. Only the newly identified GABA neurons are labeled. SMD is more strongly stained in *unc-47* mutants compared to wild type animals. The hmc, ALA and AVF are not stained. We also observed weak GABA staining in the IL1 neurons of *unc-47(-)* animals, but not in wild-type animals. (E) Two different optical sections of the head of a GABA-stained adult *snf-11/GAT(-)* hermaphrodite, which illustrates the dependence of some GABA-positive cells on GABA uptake. Only the newly identified GABA neurons are labeled. hmc, GLR, ALA and AVF are not stained. (F) Anti-GABA staining of AVF neurons is absent in *unc-30* mutant animals. (A–F) (Scale bar = 10 μ m)

DOI: 10.7554/eLife.17686.003

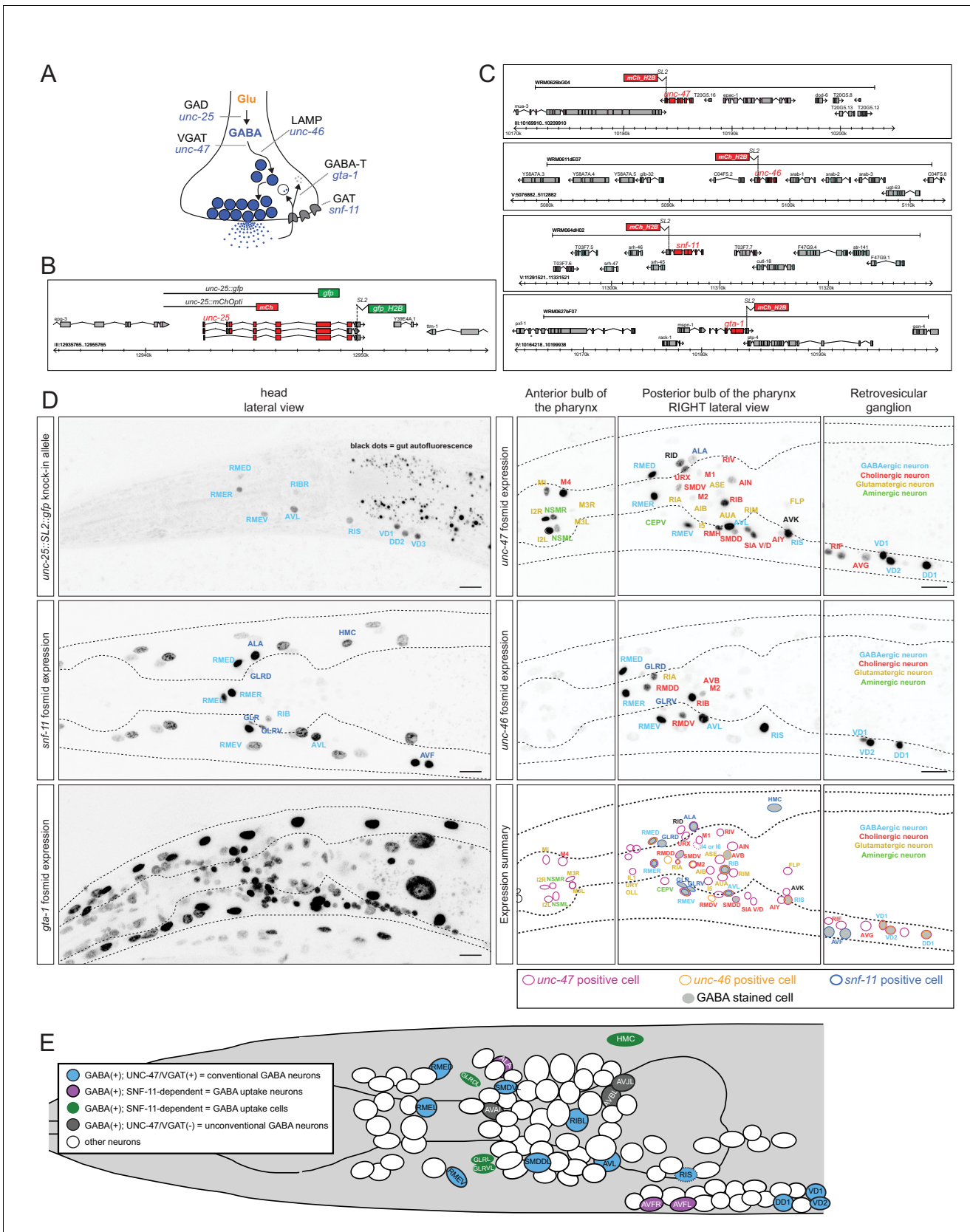


Figure 2. Reporter gene constructs recapitulate GABA antibody staining in the nervous system of the *C. elegans* hermaphrodite. (A) GABA synthesis, secretion, uptake and degradation pathway. (B) *unc-25* reporter transgene schematics and the *unc-25* locus with the knock-in allele *ot867[unc-25::SL2::gfp]*. Figure 2 continued on next page

Figure 2 continued

gfp] which is targeted to the nucleus to facilitate the detection and the identification of expressing cells. (C) Fosmid-based reporter transgenes for *unc-46*, *unc-47*, *snf-11* and *gta-1*. Note that the reporters are targeted to the nucleus to facilitate the identification of expressing cells. (D) Reporter expression. Images are color-inverted. The last panel shows a summary of all reporter expressing neurons. Font color indicates the known neurotransmitter used by the neuron, the colored circle which gene is expressed in the neuron and the grey shade if the neuron is GABA stained. (Scale bar = 10 μ m) (E) Summary of all GABA-positive cells in the head of the worm (left view). Color coding same as in **Table 1**. Pharyngeal neurons are not shown. In the remainder of the body of the hermaphrodite, only the D-type motor neurons (some shown here) and the DVB tail neuron are GABA-positive. Dashed circle indicates neurons that present only on the right side of the animals, but shown here on the left side.

DOI: [10.7554/eLife.17686.004](https://doi.org/10.7554/eLife.17686.004)

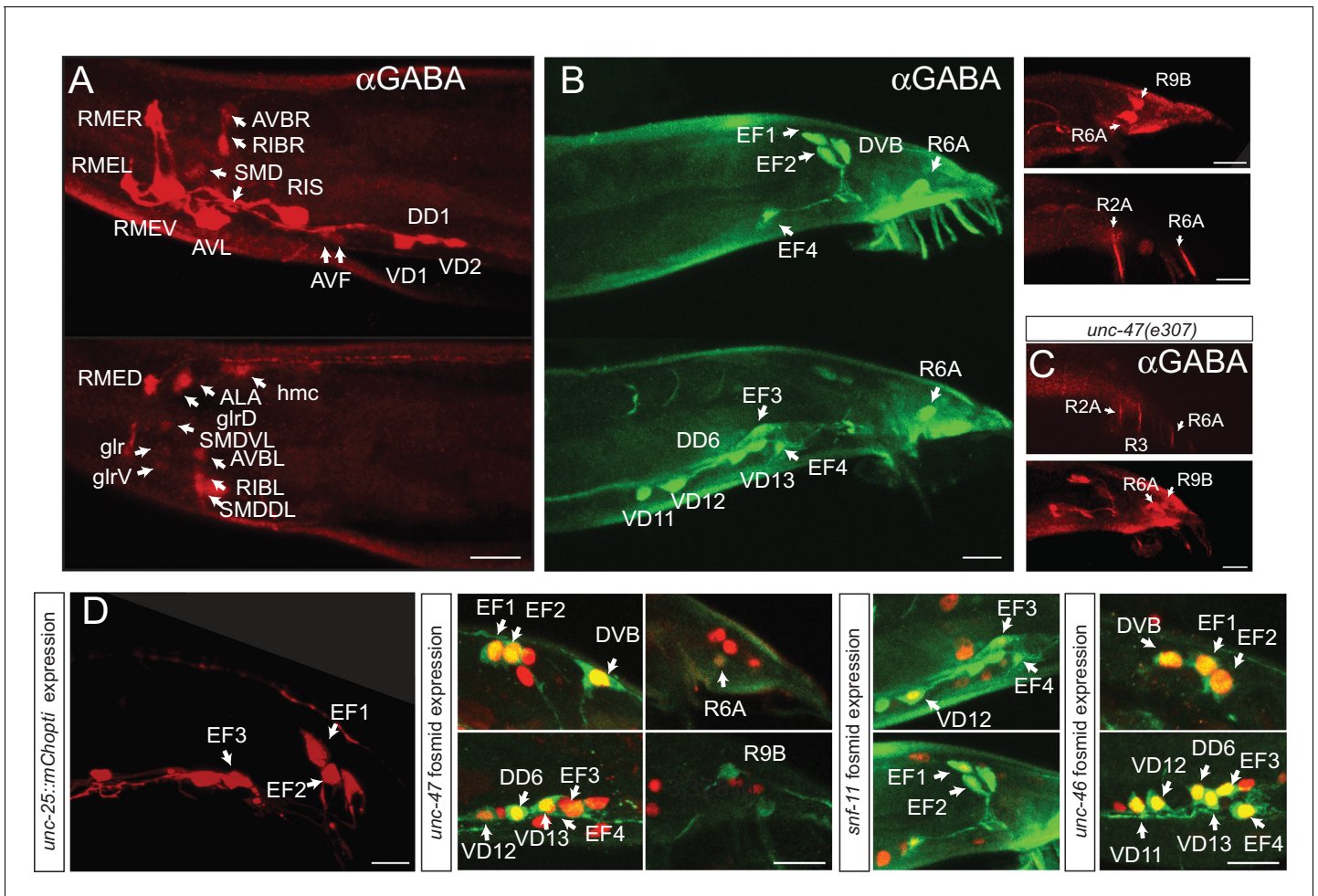


Figure 3. GABAergic neurons in the male. (A–C) Anti-GABA staining of adult males in the head and tail in different optical sections. (Scale bar = 10 μ m) (A) In adult male head, same neurons as in the hermaphrodite head are GABA-positive. (B) Seven male-specific neurons are GABA-stained: EF1–4, R2A, R6A and R9B (white arrows; two optical section with green fluorescent secondary antibody in left two panels with ray neuron staining being background and red fluorescent secondary antibody in upper right panels with ray neuron showing no background staining). (C) In *unc-47* mutants, GABA staining in R2A, R6A and R9B persists, indicating that these neurons do not acquire GABA via secretion from other neurons. In addition, we observe GABA staining in an extra ray neuron, R3, that we cannot detect in wild-type animals. (D) Reporter gene expression in adult male tail. Left panel: *unc-25* reporter, other panel shows red fosmid reporter (nucleus) and green anti-GABA staining. Reporter constructs as shown in **Figure 2**. EF1–4 expressed *unc-25/GAD*, *unc-47/VGAT* and *snf-11/GAT*. *unc-47/VGAT* is expressed in R6A but not in R2A or R9B. White arrow indicates GABA stained cells colocalizing with the reporter. *snf-11/GAT* is present in the male VD12 but not in the hermaphrodite. *unc-25/GAD* transcriptional reporter shows the same expression pattern as the *gfp* knock-in allele in the male tail (Scale bar = 10 μ m).

DOI: 10.7554/eLife.17686.006

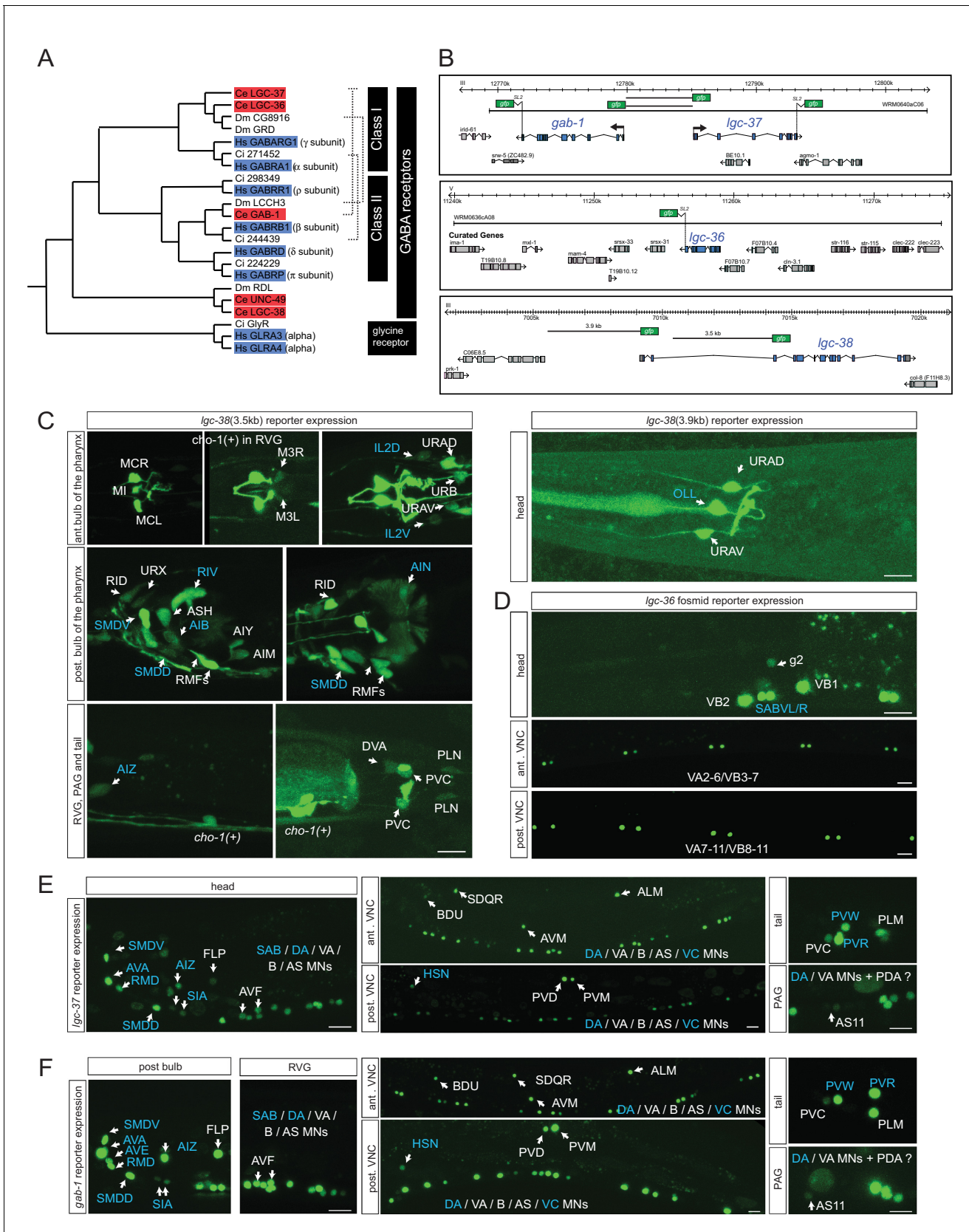


Figure 4. Ionotropic GABA receptor expression. (A) Phylogeny of the *C. elegans* GABA_A receptor-encoding genes (red boxes) that are most similar to canonical human GABA_A receptor-encoding genes (blue boxes). The dendrogram has been adapted from (Tsang et al., 2007). Two other bona-fide Figure 4 continued on next page

Figure 4 continued

GABA receptors, EXP-1 and LGC-35, are more distantly related, falling outside this part of the tree. (B) GABA reporter transgene schematics. All the fosmids are targeted to the nucleus to facilitate the detection and the identification of expressing cells. (C–F) Expression of *Igc-38* (C), *Igc-36* (D), *Igc-37* (E) and *gab-1* (F) reporter constructs. Blue labels indicate neurons innervated by a GABA-positive neuron (see **Table 3**). Cells were identified with *unc-47*, *eat-4* or *cho-1* reporters as landmarks in the background. The transcriptional reporter gene fusions for *Igc-38* (see Materials and methods) do not capture the entire locus and hence they may lack regulatory information but there is no fosmid available that encompasses the entire locus. (Scale bar = 10 μm , VNC: ventral nerve cord, PAG: pre-anal ganglion, RVG: retro-vesicular ganglion; MN = motor neuron)

DOI: [10.7554/eLife.17686.008](https://doi.org/10.7554/eLife.17686.008)

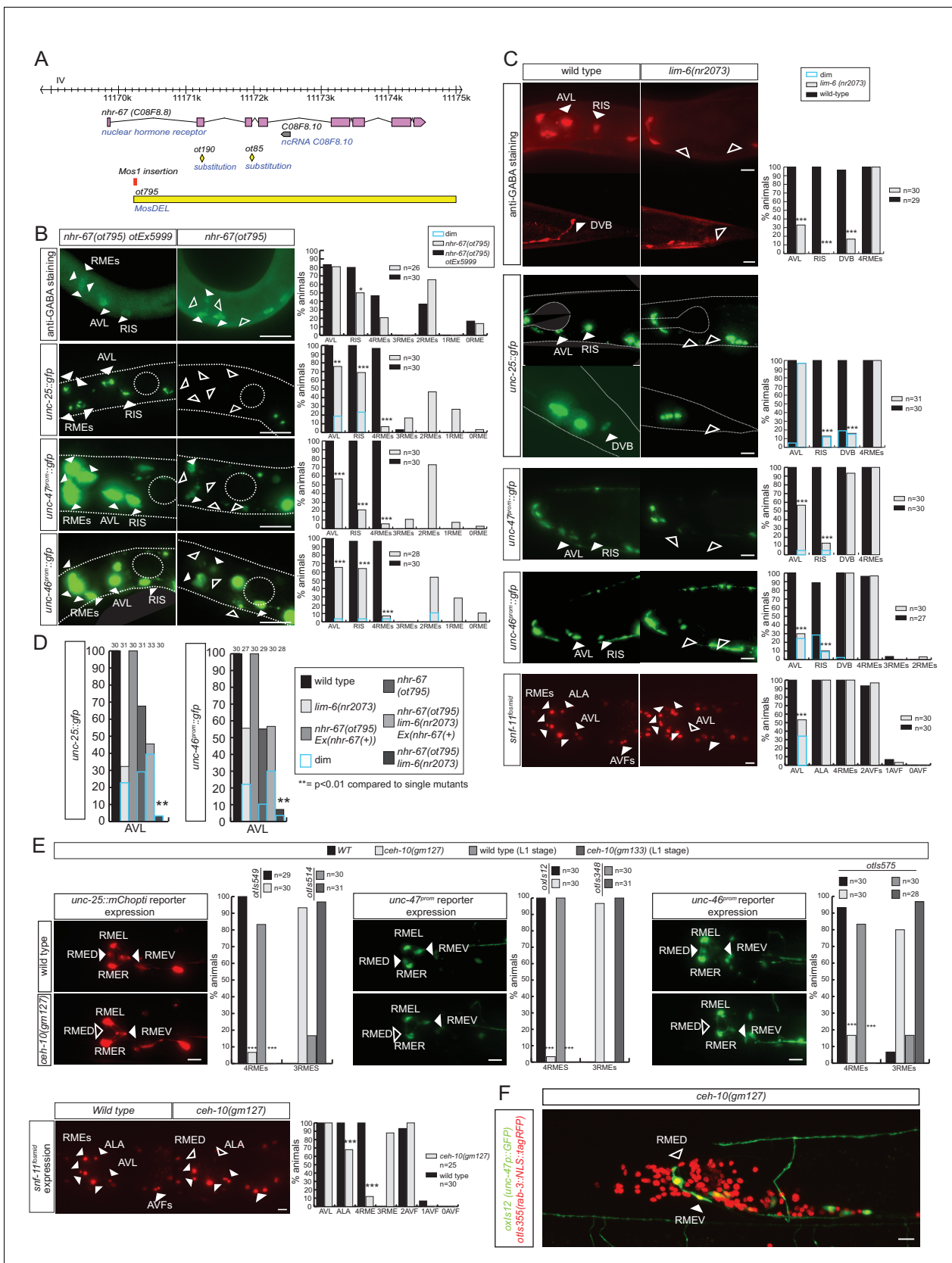


Figure 5. *nhr-67* cooperates with distinct homeodomain proteins in distinct GABAergic neuron types. (A) *nhr-67* locus with newly generated null allele. (B–C) Anti-GABA staining and expression of GABA pathway genes in *nhr-67* and *lim-6* null mutant backgrounds (Fisher exact test for all the data except Figure 5 continued on next page

Figure 5 continued

for GABA staining in *nhr-67* mutant where Chi-square test was used; * $p < 0.05$, ** $p < 0.01$ and *** $p < 0.001$ compared to single mutants; for expression in RMEs statistics were performed only on the category 4RMEs) (B) AVL, RIS and RMEs are affected in *nhr-67* null mutants. *nhr-67(ot795)* animals are not viable and *otEx5999* is an extrachromosomal array that contains copies of the wild-type *nhr-67* locus as well as an array marker (*unc-47^{prom}::mChOpti*). Animals that either contain or do not contain this array were scored for mutant phenotypes at the L1 stage. (C) *lim-6* null mutant animals display defects in GABAergic neuron identity of AVL, RIS and DVB. (D) *nhr-67* and *lim-6* interact genetically in the AVL neuron. Expression of *unc-25/GAD* and *unc-46/LAMP* in AVL were scored at L1 in the different mutant background. (Chi-square test, ** $p < 0.01$ compared to single mutants) (E) *ceh-10* mutant animals display defects in RMED GABAergic neuron identity. Expression of GABA pathway genes in null mutants (*gm133*) was scored as L1, when they arrest development. Viable *gm127* hypomorphic mutants were scored as adults. Wild type data in panel C are re-iterated in panel E. (F) *ceh-10* does not affect the generation of RMED as assessed by expression of a pan-neuronal marker in red but affects GABAergic fate as assessed by the absence of the *unc-47/VGAT* reporter in green. (A–F) (plain arrow head indicates a neuron presence and empty arrow head its absence) (Scale bar = 10 μm)

DOI: [10.7554/eLife.17686.010](https://doi.org/10.7554/eLife.17686.010)

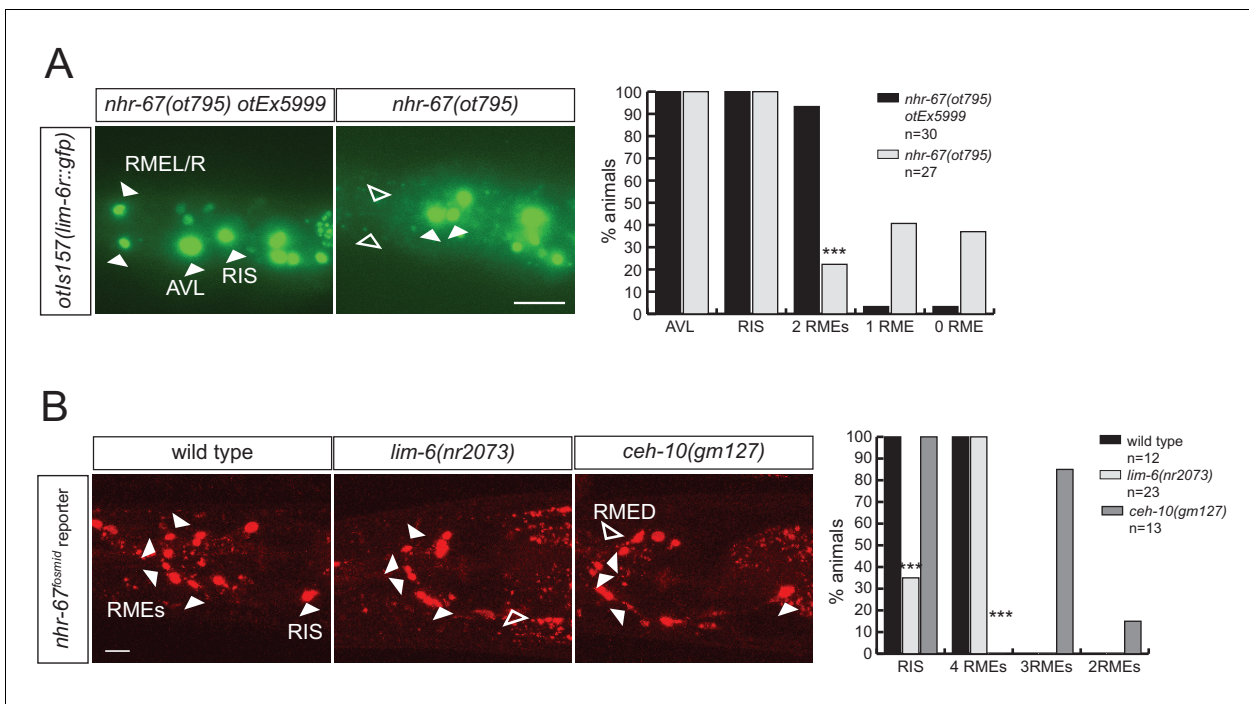


Figure 5—figure supplement 1. Regulatory relation of *nhr-67* and other homeobox genes. (A) *lim-6* expression is regulated by *nhr-67* in RMEL/R but not in RIS or AVL. *lim-6::gfp* reporter *otIs157* (entire locus fused to *gfp*) was scored in a wild-type and *nhr-67* null mutant background at the L1 stage. (B) *nhr-67* fosmid expression is controlled by *ceh-10* in RMED and by *lim-6* in RIS. *nhr-67::mChOpti* rescuing fosmid reporter *otEx3362* was scored in the wild-type background, *lim-6* and *ceh-10* mutant background at the adult stage. (A–B) (Scale bar = 10 μ m, Fisher exact test, *** p <0.001, compared to wild type; when not noted, not significant)

DOI: 10.7554/eLife.17686.011

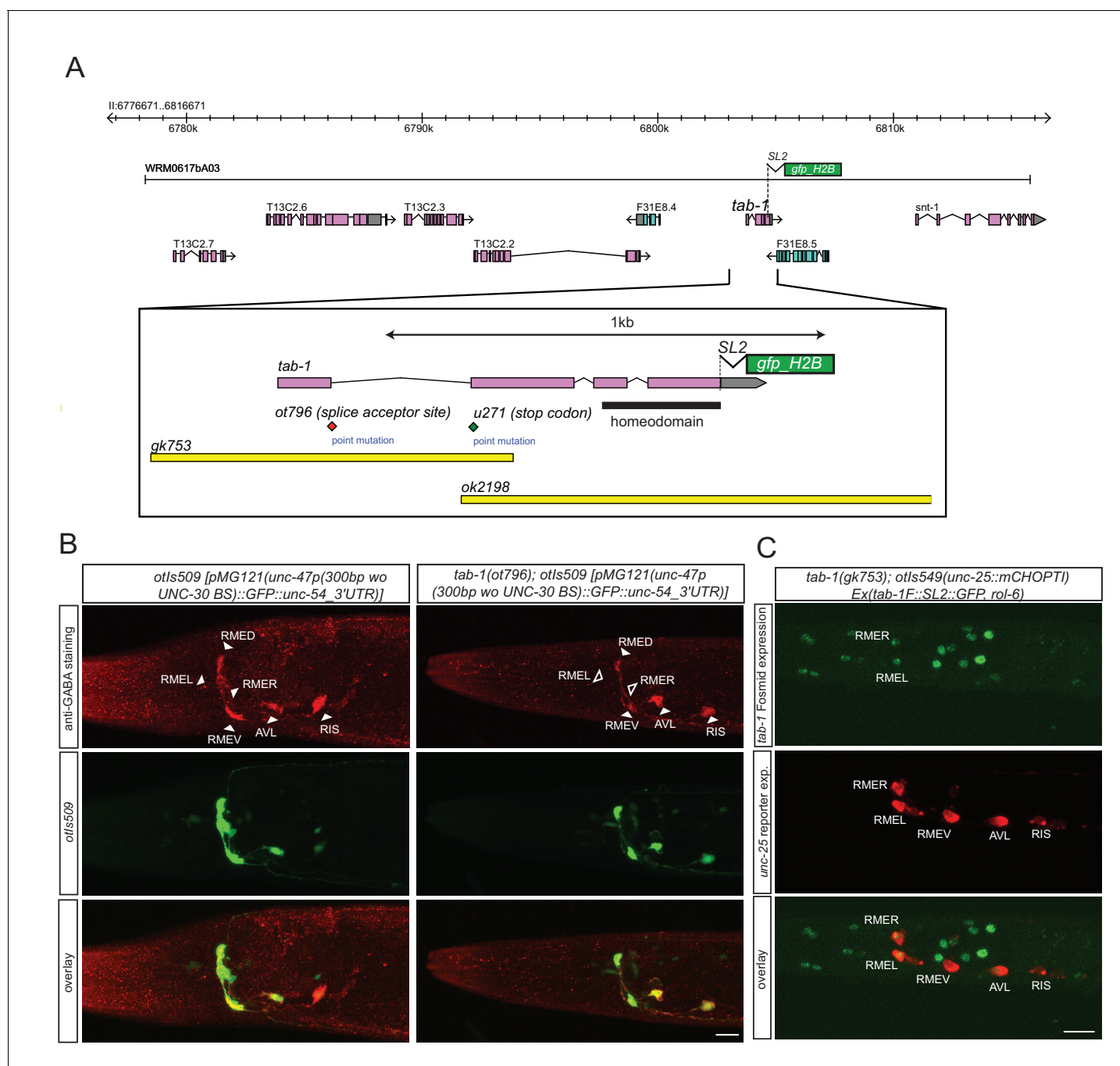


Figure 6. *tab-1* is a homeodomain protein cooperating with *nhr-67* to specify RMEL/R GABAergic identity. (A) *tab-1* locus, alleles and fosmid reporter. (B) *tab-1* affects in RMEL/R *unc-47* reporter expression (in green) and anti-GABA staining (in red). The *unc-47* reporter used has a presumptive *unc-30* binding site deleted, which diminishes the expression of this reporter in D-type neurons. The effects on these and other reporters are quantified in **Table 5** (empty arrow head indicates loss of expression). (C) Expression pattern of the rescuing *tab-1* fosmid reporter (in green) in a *tab-1* mutant background with a *unc-25*/GAD gene reporter (in red). (B–C) (Scale bar = 10µm)

DOI: 10.7554/eLife.17686.012

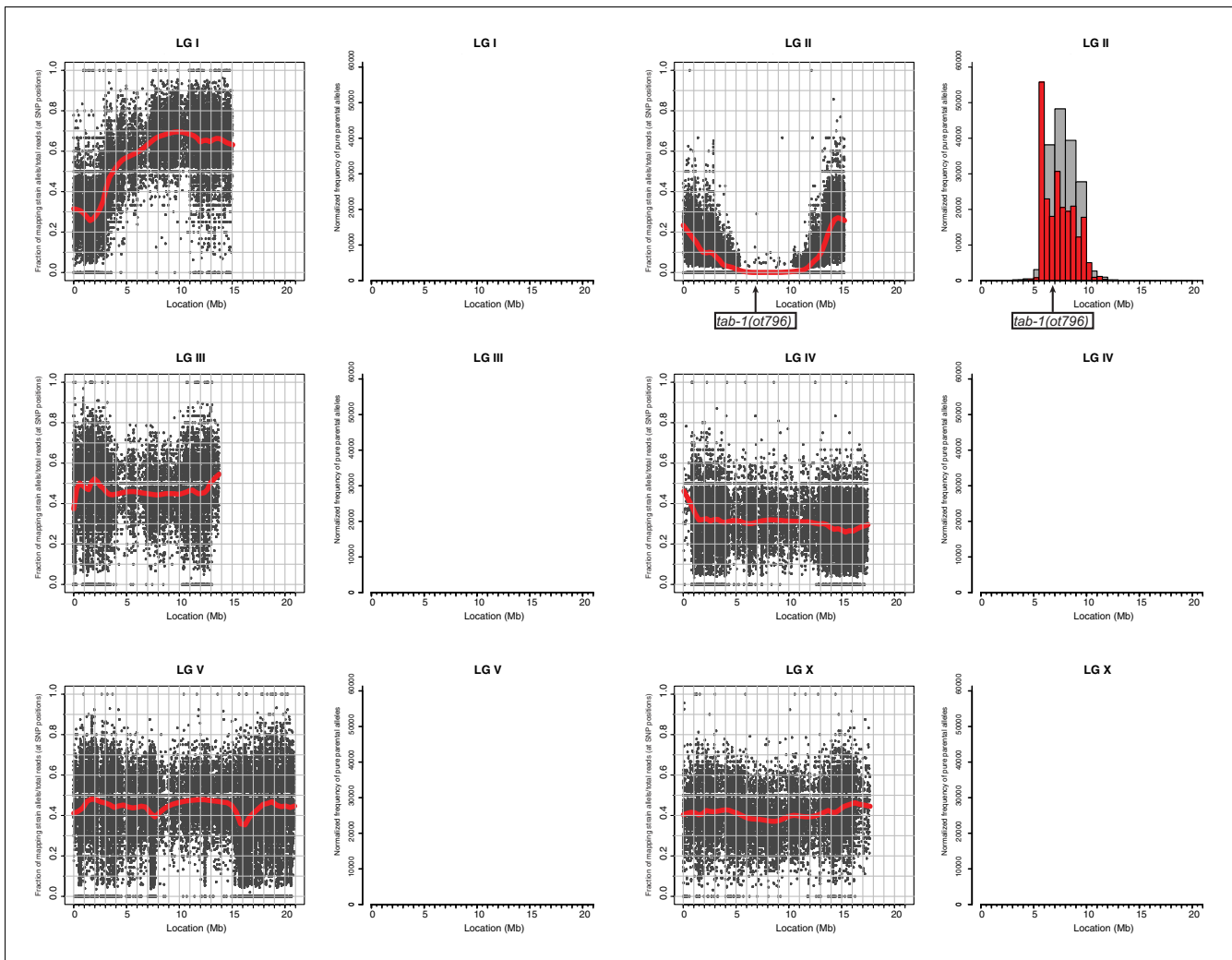


Figure 6—figure supplement 1. Whole genome sequencing data for *tab-1* mutant identification. A previously described mapping/sequencing approach was used to map the *tab-1* mutant allele (Doitsidou et al., 2010). Data was analyzed using CloudMap (Minevich et al., 2012). DOI: 10.7554/eLife.17686.013

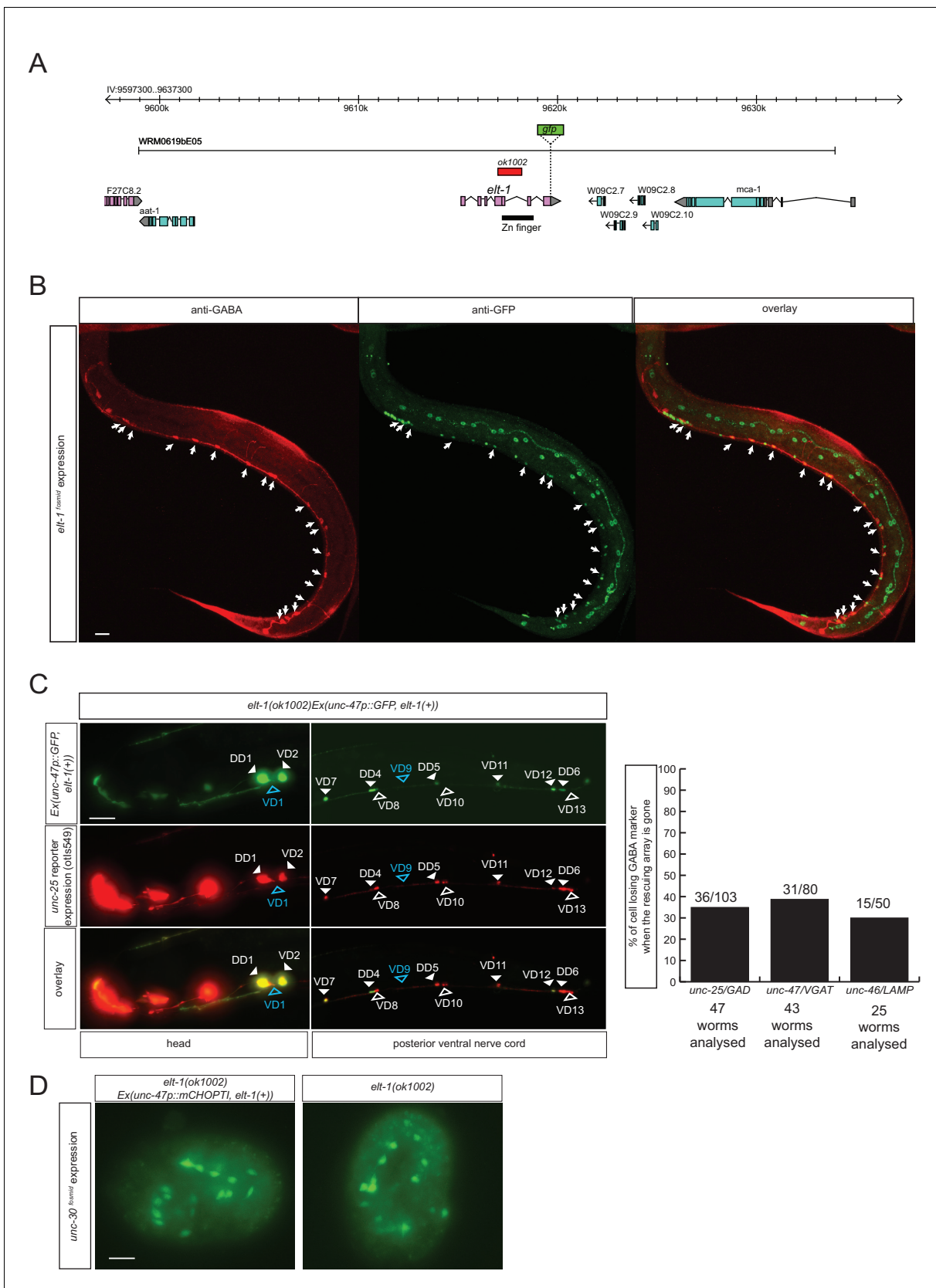


Figure 7. The GATA2/3 ortholog *elt-1* controls GABAergic identity of D-type motor neurons. (A) *elt-1* locus and fosmid reporter used for expression analysis. The same, but untagged fosmid was used for mosaic analysis (panel C). (B) *elt-1* is expressed in D-type motor neurons. The expression pattern
 Figure 7 continued on next page

Figure 7 continued

of the *elt-1* fosmid based reporter construct shown after immunostaining with anti-GFP in green and anti-GABA in red (C) Mosaic analysis of *elt-1* function. *elt-1* null mutants that carry a rescuing array, as well as an array marker that labels the presence of the array in GABA neurons (*unc-47::gfp*) are scored for *unc-25::mChopti* (*otIs549*) expression. Whenever no *gfp* signal is observed in a D-type motor neuron (empty arrow head), the expression of *unc-25^{prom}::mChOpti* is scored (white empty arrow head if present and blue empty arrow head if absent). Bar graph shows similar scoring done for the expression of *unc-47/VGAT* and *unc-46/LAMP*. (D) *unc-30* fosmid reporter expression is not affected in *elt-1* mutants, indicating that D-type motor neurons are born in the *elt-1* mutants. (B–D) (Scale bar = 10 μ m).

DOI: [10.7554/eLife.17686.015](https://doi.org/10.7554/eLife.17686.015)

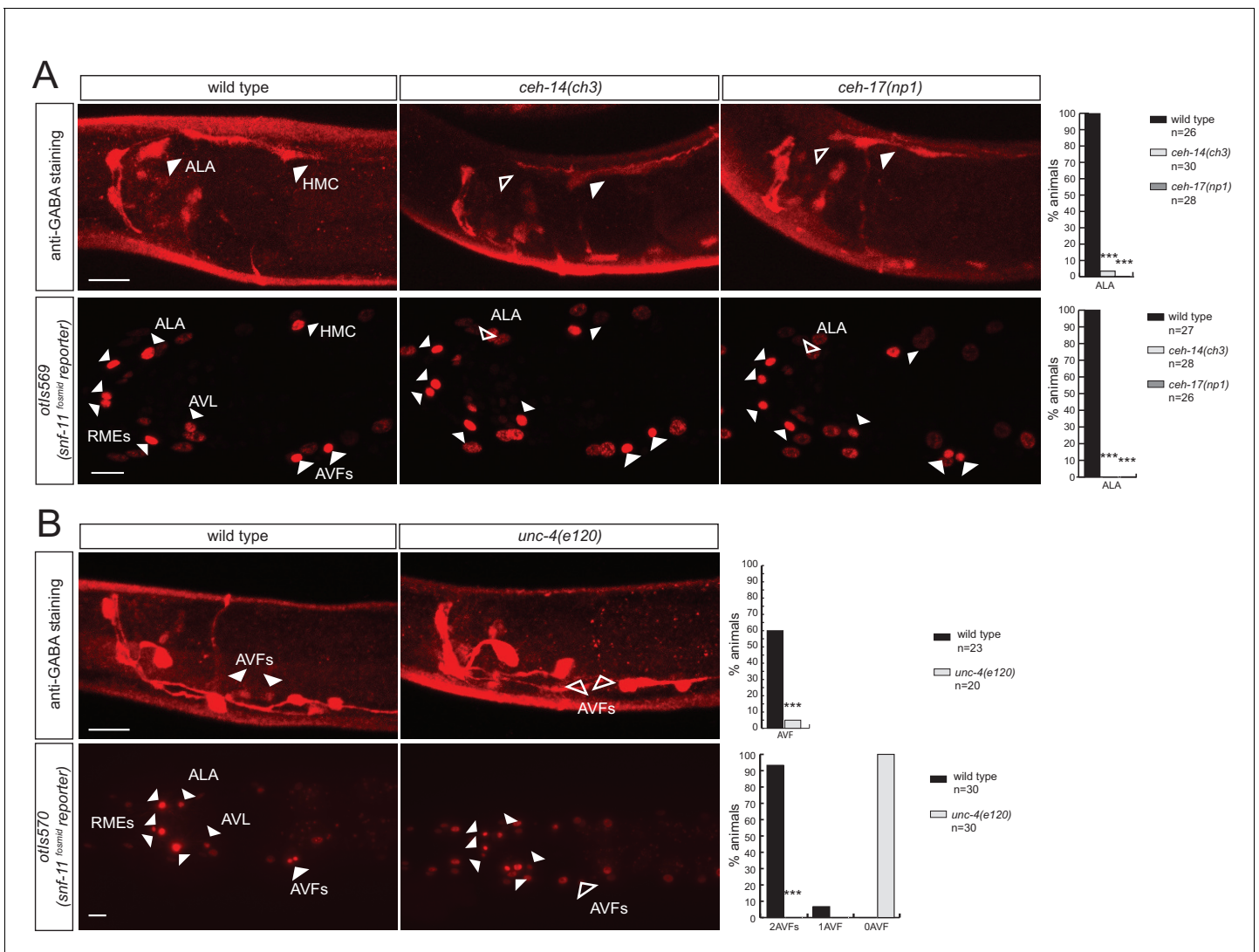


Figure 8. Homeobox genes controlling the identity of GABA uptake neurons. (A) *ceh-14* and *ceh-17* specify the identity of the newly identified ALA GABAergic neuron, as assessed by GABA staining (upper panels) and *snf-11* fosmid reporter expression (lower panels) (B) *unc-4* affects GABA staining (upper panels) and *snf-11* reporter gene expression (lower panels) in the AVF neuron. (A–C) plain arrow head indicates a neuron presence and empty arrow head its absence (Scale bar = 10 μ m, Fisher exact test, *** p <0.001, compared to wild type; when not noted, not significant; for expression in AVFs statistics were performed only on the category 2AVFs)

DOI: 10.7554/eLife.17686.016

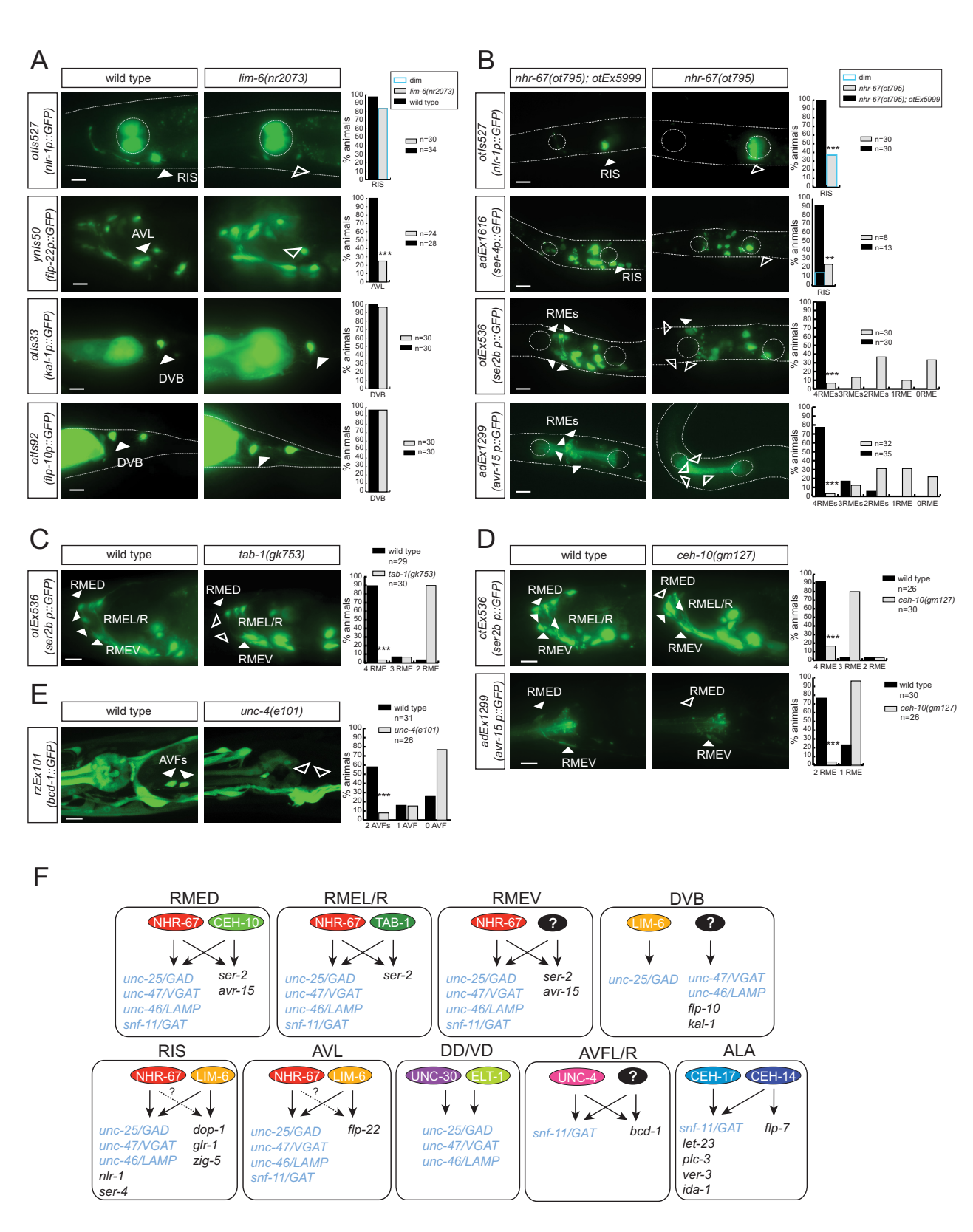


Figure 9. Transcription factors controlling GABAergic identity also control other cellular identity markers. (A) *lim-6* controls cell identity markers in AVL and RIS, but not DVB. (B) *nhr-67* controls additional neuron identity markers of GABAergic neurons. *nhr-67(ot795)* animals are not viable and *otEx5999* Figure 9 continued on next page

Figure 9 continued

is an extrachromosomal array that contains copies of the wild-type *nhr-67* locus as well as an array marker (*unc-47^{prom}::mChOpti*). Animals that either contain this array or do not contain it were scored for mutant phenotypes at the L1 stage. (C) *tab-1* controls the expression of RMEL/R identity markers. (D) *ceh-10* controls the expression of RMED identity markers. (E) *unc-4* controls the expression of the AVF identity marker *bicd-1*. (A–E) plain arrow head indicates a neuron presence and empty arrow head its absence (Scale bar = 10 μ m; Fisher exact test, *** $p < 0.001$, compared to wild type; when not noted, not significant; for expression in RMEs or AVFs statistics were performed only on the category 4RMEs or 2AVFs) (F) Summary of known gene regulatory programs in GABA producing neurons (GABA uptake neurons are not shown). '?' indicates the regulatory relationship is just extrapolated from the effect of the transcription factor on GABA pathway genes. Already previously reported were the effect of *lim-6* on non-GABA pathway genes in RIS and AVL, on *unc-25* in DVB (Hobert et al., 1999; Tsalik et al., 2003), the effect of *nhr-67* on *unc-47* (Sarin et al., 2009), the effect of *unc-30* on *unc-25* and *unc-47* (Eastman et al., 1999), the effect of *ceh-14/ceh-17* on *let-23*, *plc-3*, *ver-3*, *ida-1* and *flp-7* (Van Buskirk and Sternberg, 2010).

DOI: [10.7554/eLife.17686.017](https://doi.org/10.7554/eLife.17686.017)

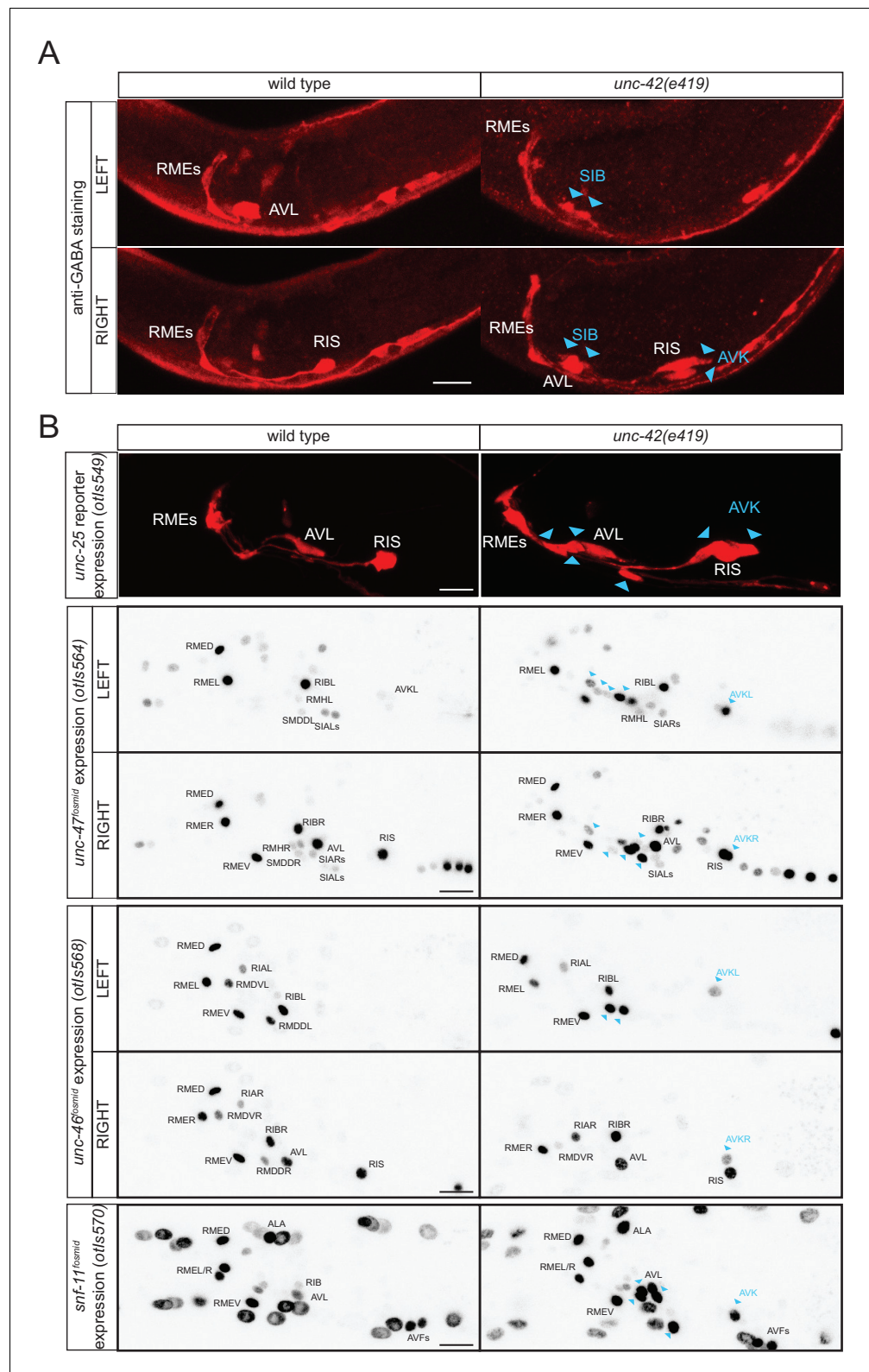


Figure 10. *unc-22* represses GABAergic neuron identity. (A) SIB and AVK switch to a GABA fate in *unc-22* mutants. Anti-GABA staining in head neurons of wild-type and *unc-22(e419)* mutant. (B) GABAergic gene battery is turned on in additional neurons in *unc-22* mutant animals. *unc-25*/GAD gene reporter expression (upper panel) and *unc-47*/VGAT, *unc-46*/LAMP and *snf-11*/GAT fosmid reporter expression in head neurons of wild-type and *unc-22(e419)* mutant animals. Figure 10 continued on next page

Figure 10 continued

mutant animals. Fosmid reporter expression images are color-inverted. (A–B) Blue arrow heads point to ectopic expression. (Scale bar = 10 μm)

[DOI: 10.7554/eLife.17686.018](https://doi.org/10.7554/eLife.17686.018)

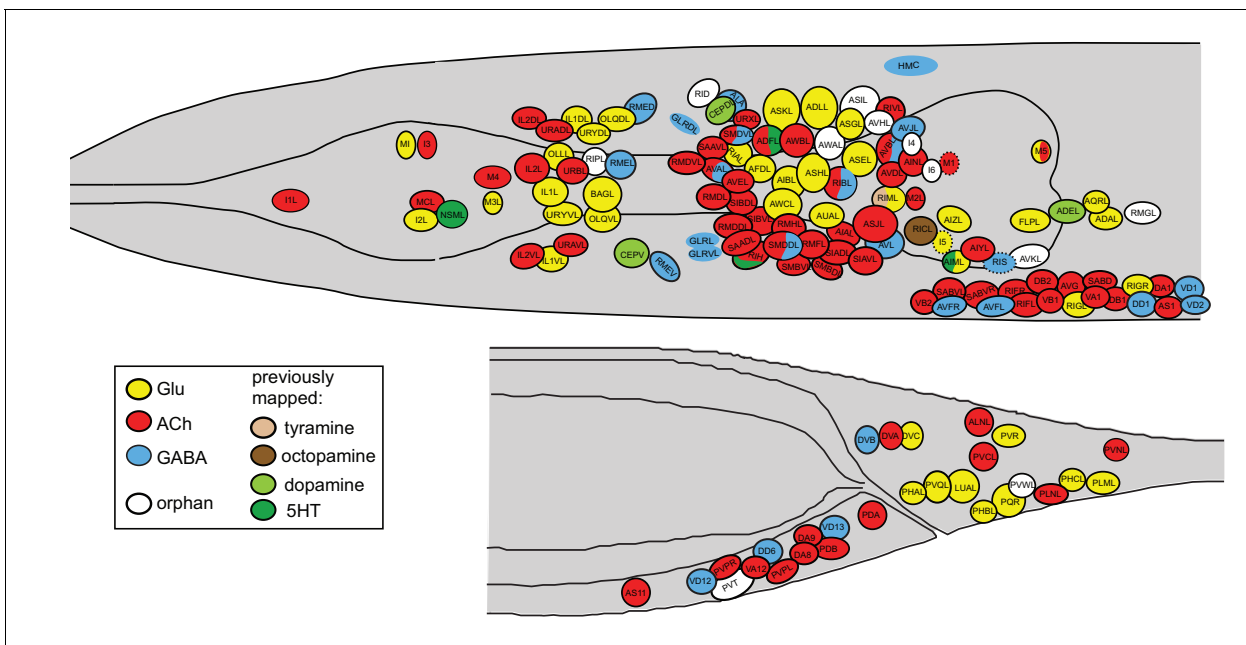


Figure 11. Neurotransmitter atlas. The current status of the *C. elegans* neurotransmitter atlas is shown. Only the head and tail of the worm are shown (left view). The Glu and ACh maps come from (Pereira et al., 2015; Serrano-Saiz et al., 2013) and have been updated here with the GABA neuron analysis. See **Supplementary file 1** for complete list. Dashed circle indicates neurons that are only present on the right side of the animal.

DOI: [10.7554/eLife.17686.019](https://doi.org/10.7554/eLife.17686.019)

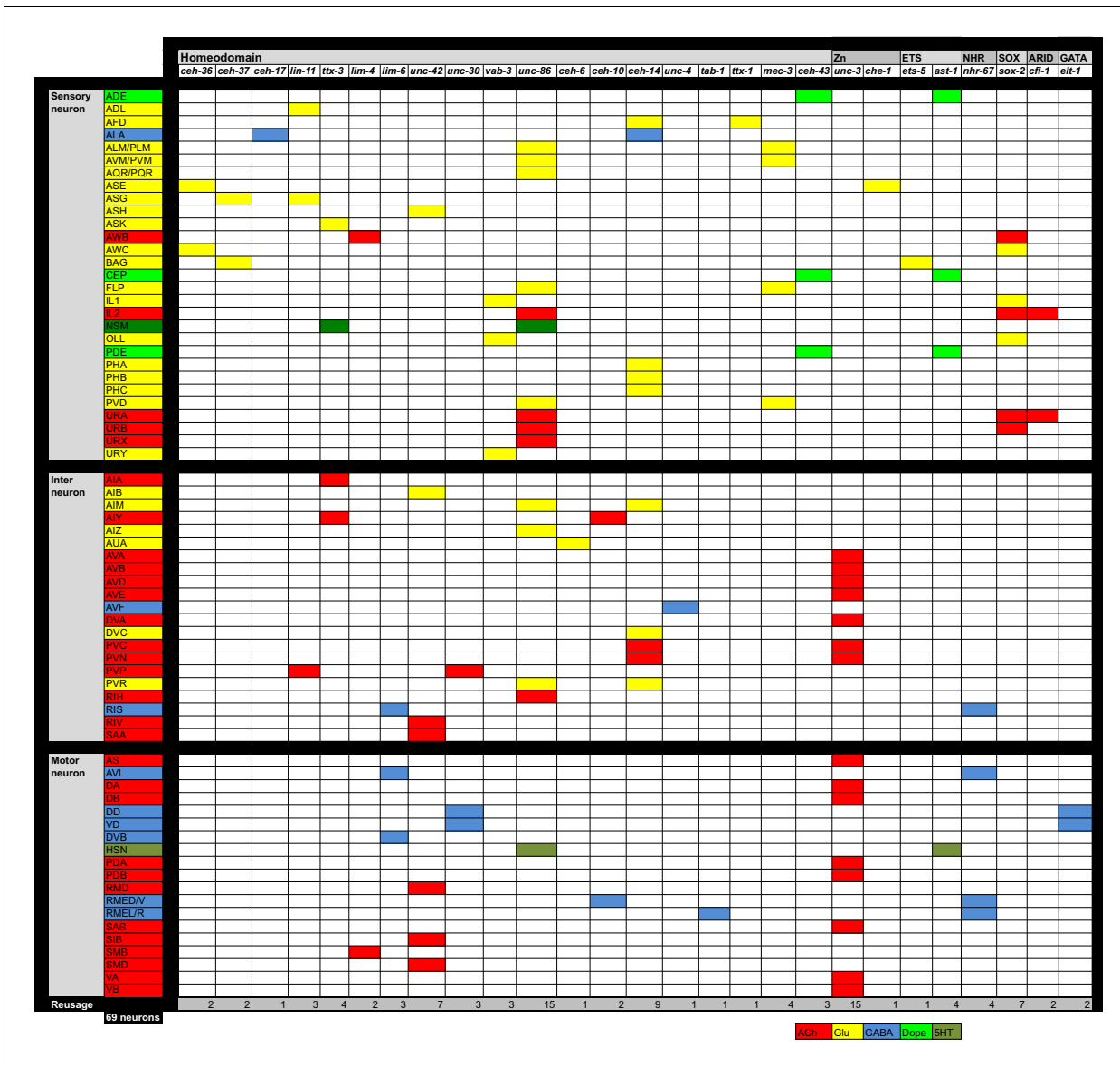


Figure 12. Regulatory map of neurotransmitter specification. All neurons are shown for which neurotransmitter identity has been determined and for which a regulator for the respective neurotransmitter identity has been identified. Colored boxes indicate cells in which the indicated transcription factor affects neurotransmitter specification. Data are from this paper for GABA and from following papers for additional neurons: (Alqadah et al., 2015; Altun-Gultekin et al., 2001; Doitsidou et al., 2013; Flames and Hobert, 2009; Kratsios et al., 2015, 2012; Pereira et al., 2015; Serrano-Saiz et al., 2013; Sze et al., 2002; Vidal et al., 2015; Zhang et al., 2014)

DOI: 10.7554/eLife.17686.021