

Spatial Analysis of the Association of Alcohol Outlets and Alcohol-Related Pedestrian / Bicyclist Injuries in New York City

Charles DiMaggio¹, Stephen Mooney², Spiros Frangos¹, and Stephen Wall³

11/26/16

¹ New York University School of Medicine. Department of Surgery. Division of Trauma and Acute Care Surgery. 550 First Avenue, New York, NY 10016

² Columbia University, Mailman School of Public Health, Epidemiology Department. 720 West 168 St, New York, NY, 10032

³ New York University School of Medicine. Ronald Pearlman Department of Emergency Medicine, 550 First Avenue, New York, NY, 10016

Background Pedestrian and bicyclist injury is an important public health issue. The retail environment, particularly the presence of alcohol outlets, may contribute to the risk of pedestrian or bicyclist injury, but this association is poorly understood.

Methods This study quantifies the spatial risk of alcohol-related pedestrian injury in New York City at the census tract level over a recent 10-year period using a Bayesian hierarchical spatial regression model with Integrated Nested Laplace approximations. The analysis measures local risk, and estimates the association between the presence of alcohol outlets in a census tract and alcohol-involved pedestrian / bicyclist injury after controlling for social, economic and traffic-related variables.

Results Holding all other covariates to zero and adjusting for both random and spatial variation, the presence of at least one alcohol outlet in a census tract increased the risk of a pedestrian or bicyclist being struck by a car by 47% (IDR = 1.47, 95% Credible Interval (CrI) 1.13, 1.91).

Conclusions The presence of one or more alcohol outlets in a census tract in an urban environment increases the risk of bicyclist / pedestrian injury in important and meaningful ways. Identifying areas of increased risk due to alcohol allows the targeting of interventions to prevent and control alcohol-related pedestrian and bicyclist injuries.

Introduction

After many years of declines, pedestrian and bicyclist injuries have been increasing across the United States (Patek, 2013; NHTSA, 2011). Active transportation, including walking, accounts for 2.8% of all commutes and 8.6% of all trips in the US, but pedestrians represented 11.3% (4,645) of the 41,059 total US traffic fatalities in 2007 (FHWA, 2010; NHTSA, 2007).

Pedestrian injury and fatality is of particular importance in dense urban environments. In 2007 73% of pedestrian crashes in the US occurred in urban areas (NHTSA, 2007). In New York City, pedestrian deaths have outnumbered motor-vehicle occupant deaths since 1910, and between 1997 and 2006, New York City accounted for the largest proportion of pedestrian fatalities in the United States (Chang, 2014). Recently, the office of the mayor has instituted a "Vision Zero" traffic plan to address the "epidemic of traffic fatalities and injuries" in New York City (NYC, 2015). The initiative is based on pioneering efforts in Sweden to bring traffic fatalities down to zero (Sweden, 2015), and focuses in large part on pedestrians and bicyclists. The New York City plan involves educational, enforcement, and engineering interventions, as well as research, surveillance and data analysis "to help target traffic safety interventions" and evaluate the effectiveness of the program (NYC, 2015).

Retail environments, particularly alcohol outlets, may contribute to the risk pedestrians face from traffic (Treno, 2007; LaScala, 2001; Campbell, 2009; Kuhlmann, 2009). In the United States, nearly half of car crashes in which a pedestrian is killed involve an intoxicated pedestrian or driver (Chang, 2008). In New York City, 15% of pedestrians and 10% of bicyclists injured by motor vehicles had used alcohol as measured by emergency department blood alcohol testing. (Dultz, 2013) Despite these individual-level associations, studies have found that proximity to bars is unrelated to alcohol consumption (Bernstein, 2007) and negatively associated with

drinking and driving (Gruenewald, 2002). In this latter study, while bar density was not associated with drinking and driving, restaurant density was. A follow up study by the same group using similar methods later found bar densities to be positively associated with drinking and driving (Ponicki, 2013). Inconsistency in the observed relationship between alcohol outlets and both proximal and distal consequences may derive partially from differences in modeling proximity to alcohol outlets or the pedestrian population at risk. Bayesian hierarchical spatial regression models offer a natural modeling strategy to explore spatio-temporal differences in risk, and have been explored extensively to relate presence of alcohol outlets to prevalence of violent crime. (Toomey, 2012; Yu, 2008; Sparks, 2011) To our knowledge, they have not previously been applied to investigate the relationship between alcohol outlets and pedestrian/bicyclist injury risk.

This analysis adds to and is part of a series of recent public health analyses focusing on built environment and its role in pedestrian injury in the context of Vision Zero initiatives in New York City. Among these studies are reports that “traditional engineering measures, in particular, signal-related ones, remain effective, when installed at appropriate locations” (Chen,2013), the utility of remote imagery to characterise pedestrian injury risk (Mooney, 2016), and a series of articles documenting the safety benefits, and cost effectiveness of Safe Routes to School environmental interventions in preventing pediatric pedestrian injury (DiMaggio, 2013; Muennig, 2014; DiMaggio, 2013) .

This study quantifies the spatiotemporal risk of alcohol-related pedestrian injury in New York City at the census tract level over a recent 10-year period using a Bayesian hierarchical spatial regression model (Besag, 1991) with Integrated Nested Laplace approximations. (Blangiardo, 2013; Rue, 2013) The study measures local risk, and estimates the association between the presence of alcohol outlets in a census tract and pedestrian / bicyclist injury after controlling for

social, economic and traffic-related variables. The primary goals of the study are to quantify the role of alcohol outlets, which includes grocery, catering, and eating establishments in addition to bars, with pedestrian / bicyclist injury in a dense urban environment, and to establish an approach to evaluations of the built environment at the local level for alcohol-related pedestrian injury. Secondary goals are to quantify and interpret the association of ecologic-level variables that may contribute to pedestrian and bicyclist injury risk at the community level.

Methods

Crash data for motor vehicle injuries to pedestrians and bicyclists were obtained from the New York City Department of Transportation. These were based on police investigations for all

motor-vehicle crashes in New York City for the years 2001 to 2010 involving personal injury or property damage in excess of \$1,000. Records were restricted to those with for which alcohol was listed as a primary contributing factor. These records do not indicate whether it was the driver or the pedestrian or bicyclist that was impaired by alcohol. Crash latitude and longitude coordinates were assigned to census tracts using the R maptools package. (Lewin-Koh, 2012) Census tract populations were based on United States 2000 and 2010 decennial census enumerations. (US Census Bureau, 2010) Census tracts were restricted to 1,929 census tracts that were present in both 2000 and 2010, creating a closed cohort of census tracts. Population estimates were linearly interpolated over inter-census years. Census tract housing and economic data were based on 2010 US Census estimates. Alcohol outlet data were derived from street addresses for all currently active liquor licenses in New York City. (NYSLA, 2015a) There are 21 classes of liquor licenses covering such entities as delicatessens, grocery stores, catering and eating establishments as well as bars. (NYSLA, 2015b) Outlet addresses were geocoded and each outlet was assigned to a census tract. (Texas A and M, 2015) These data were merged with the pedestrian / bicyclist crash data files based on census tract.

A social fragmentation index (Congdon, 2013; Pabayo, 2014) was created using 4 variables extracted from 2010 US census variables: the proportion of total housing units in a census tract that were not owner occupied, the proportion of vacant housing units, the proportion of individuals living alone and the proportion of housing units into which an occupant recently moved. A "recent" move in the Census data was defined as anytime after the prior census enumeration, i.e. 2000. The four component social fragmentation index variables were standardized and summed with equal weights, resulting in a normally distributed index with mean zero and 95% quantiles between -2.5 and 2.2.

An economic measure was based on the census tract median household income for the past 12 months (in units of 10,000 2012 inflation-adjusted dollars). Census tract traffic-related variables were obtained from the New York City Department of Health and Mental Hygiene, and consisted of traffic density (vehicle kilometers traveled per day per square kilometer) in standardized units, and average speed in increments of 10 miles per hour. (Ross, 2013)

A census tract map file for New York City was obtained from the US Census and was matched to aggregated census tract counts of pedestrian / bicyclist injuries and presence or absence of alcohol outlets. Twenty-one census tracts with zero population representing large parks, beaches, cemeteries and train yards were excluded from analysis. Three census tracts representing highly-trafficked tourist areas with small underlying populations (Grand Central Station, Penn Station, and Times Square) were adjusted based on hotel capacity, adding 16,000 transient residents to each area. (Karmin, 2013) A contiguous neighbor adjacency matrix graph was created for use with the conditional autoregression term in the model using the poly2nb function in the spdep R package. (Bivand, 2013)

Counts of pedestrian and bicyclist injuries in New York City census tracts were spatially modeled (Lawson, 2000; Lawson, 2013; Banerjee, 2004) as:

$$y_i \sim Pois(\lambda_i = e_i \theta_i)$$

$$\log(\theta_i) = \beta x_i + u_i + \eta_i$$

$$u \sim nl(0, \tau_u)$$

$$\eta \sim nl(\eta_\delta, \tau_\eta / \eta_\delta)$$

where,

(1) the y_i counts in area i , are independently identically Poisson distributed and have an expectation in area i of e_i , the expected count, times θ_i , the risk for area i .

(2) a logarithmic transformation ($\log(\theta_i)$) allows a linear, additive model of regression terms (βx_i), along with

(3) a spatially *unstructured* random effects component (u_i) that is i.i.d normally distributed with mean zero ($\sim NI(0, \tau_u)$), and

(4) a conditional autoregressive spatially structured component ($\eta \sim NI(\eta_\delta, \tau_\eta/n_\delta)$) in which a "neighborhood" consisting of spatially adjacent shapes is characterized by the normally distributed mean of the spatially structured random effect terms for the spatial shapes that make up the neighborhood (η_δ), and the standard deviation of that mean divided by the number of spatial shapes in the neighborhood (τ_η/n_δ). This spatially structured conditional autoregression component is also sometimes described as a Gaussian process $\lambda \sim NI(W, \tau_\lambda)$ where W represents the matrix of neighbors that defines the neighborhood structure, and the conditional distribution of each λ_i , given all the other λ_j is normal with $\mu =$ the average λ of its neighbors and a precision (τ_λ).

The baseline convolution model that consisted solely of an intercept term with unstructured and spatially structured random effect terms was extended to include covariates for the presence or absence of alcohol outlets in a census tract, social fragmentation, median household income, traffic density and average speed.

The final linear model consisted of an intercept (β_0); and indicator variable for the presence or absence of alcohol outlets in a census tract (β_1), a vector of census-level explanatory variables (βx_i) for social fragmentation (Congdon index), economics (in \$10,000 increments of median household income), average speed (in 10-mile per hour increments), and traffic density (in standardized units); a spatially unstructured random effect term (u_i); and a spatially structured conditional autoregression term (η_i). The log of the yearly census-tract population was included as an offset variable.

In this model, the intercept is interpreted as the average city-wide per-population risk on the log scale adjusted for the presence of alcohol outlets, covariates, random effects and spatial terms. The exponentiated coefficient for the alcohol outlet term is interpreted as an incidence density ratio for the association of pedestrian / bicyclist injuries for census tracts with alcohol outlets vs. those without, controlling for the additional census-tract level explanatory covariates. The spatially unstructured random effect term captures normally-distributed or Gaussian random variation around the mean or intercept. The spatially-structured conditional autoregression term accounts for local geographic influence.

Spatial risk, controlling for or holding the covariates constant, was calculated as $\zeta_i = u_i + \eta_i$, and is interpreted as the residual spatial risk for each area (compared to all of New York City) after presence of alcohol outlets, social fragmentation, economics, average speed, and traffic density are taken into account. The probability of spatial risk greater than 3 ($\Pr e^{\zeta_i} > 3$) was calculated. These so-called exceedance probabilities (Clayton, 1992) are the posterior probabilities for an area's spatial risk estimate exceeding some pre-set value. This can be extended (Richardson, 2004) to decision rules "for classifying whether (an area) has an increased

risk based on how much of the posterior distribution of the relative risk parameter ... exceeds a reference threshold". (Best, 2005) They are calculated as the proportion of simulations for which the linear combination of effects (ζ) exceeds the target value. Lastly, the proportion of spatially explained variance was calculated as the proportion of total spatial heterogeneity accounted for by the spatially structured conditional autoregression variance.

Spatial modeling was conducted using integrated nested Laplace approximations (INLA) with the R INLA package. (Rue, 2013; Blangiardo, 2013) The study protocol was approved as exempt by the (*Deleted for Blind Peer Review*) institutional review board.

Results

Of the 168,060 pedestrian and bicyclist injury records for New York City between 2001 to 2010, 93,783 (55.8%) had a valid entry for a primary apparent contributing factor. 2,170 of these records listed alcohol as the primary apparent contributing factor. Of the 1,908 New York City census tracts included in the study 198 (10.4%) had at least one actively licensed alcohol outlet. The population-based alcohol-related pedestrian / bicyclist injury rate varied by borough. The highest rate was in Manhattan was 33.9 injuries per 100,000 population, followed by Brooklyn with 27.6 injuries per 100,000 population. The boroughs of Queens and the Bronx had similar rates, with 14.6 and 14.9 injuries per 100,000 population respectively. The lowest rate was in Staten Island, with 7.0 injuries per 100,000 population. There was an initial drop in the population-based rate of alcohol-related pedestrian injuries in New York City in 2002, followed by a relatively stable rate of approximately 2.8 alcohol-related injuries per 100,000 persons each year. (Figure 1)

The results for the fixed effects of the presence of alcohol outlets and covariates for the the spatial model are presented in Table 1. Holding all other covariates to zero and adjusting for both random and spatial variation, the presence of a at least one alcohol outlet in a census tract increased the risk of a pedestrian or bicyclist being struck by a car by 47% (IDR = 1.47, 95% Credible Interval (CrI) 1.13, 1.91). Every one unit increase in the social fragmentation index was associated with a 25% increase in pedestrian injury risk (95% CrI 1.17, 1.35). Similarly, for every one standardized unit increase in traffic density, there was a 28% increase in pedestrian injury risk (95% CrI 1.16, 1.40). For every 10 mile per hour increase in average traffic speed in a census tract, there was a 31% decrease in pedestrian injury risk (95% CrI 0.55, 0.87). Each

\$10,000 increment in median household income within a census tract was associated with a 1% decrease in census-tract level pedestrian injury risk (95% CrI 0.98, 0.99).

The spatially unstructured heterogeneity random effect term was normally distributed and spatially random. The spatially structured conditional autoregression term demonstrated areas of spatial patterning and similarity among census tracts. The proportion of the total spatial heterogeneity explained by the spatially structured conditional autoregression term was 73.2%. The spatial risk term at the census tract level identified areas at increased risk of alcohol-related pedestrian/ bicyclist injury throughout the 10-year period. (Figure 2) Posterior probabilities for the 48 census tracts with a spatial risk estimate of alcohol-related injury exceeding 3 are presented in Figure 3. In this figure, for each census tract highlighted in dark blue, the probability that the risk that a pedestrian or bicyclist injury is alcohol-associated is greater than 3 approaches near certainty. In Figure 4, a single census tract from lower Manhattan is selected where the probability is greater than 85% that the risk of an injury is alcohol-related injury is at least 3. A satellite image for this tract obtained from Google Maps is then presented, illustrating the general physical layout of the tract. Figure 5 then presents the a detailed Google Streetview image of one of the blocks in the census tract, illustrating the kind of detail available to researchers and persons conducting public health evaluations of the built environment for features related to pedestrian injury.

Discussion

In this study, we found that presence of alcohol outlets was meaningfully associated with the risk of alcohol-related pedestrian and bicyclist injury in New York City from 2001-2010.

Alcohol consumption, whether on the part of a motor vehicle driver or a vulnerable road user, increases the likelihood of a crash, the severity of injuries incurred in a crash, and the odds of death due to a crash (Peden, 2004).

Drinking places not only the driver and vehicle passengers at risk for serious bodily harm but also pedestrians and cyclists who share the road. Although vehicle safety upgrades (e.g. air bags, structural integrity) and educational and legislative campaigns (e.g. seatbelt use, child seats) have made driving safer and reduced the number of deaths of motor vehicle occupants, studies from both the US (MMWR, 2001) and Australia (Holubowycz, 1995) indicate that alcohol-related pedestrian collisions and deaths have not decreased to the same extent. Injured pedestrians who have used alcohol suffer more severe injury, with statistically significantly higher injury severity scores (8.8 vs 4.9) and length of stays (3.9 vs. 1.9 days) (Dultz, 2011). In 2009 in the United States, 53% of pedestrians killed between 9PM to 6AM had blood alcohol concentrations (BACs) at or above 0.08 percent (NHTSA 2010).

Our study was motivated in part by the recommendation that "The main elements of (a strategic) approach involved systematic methods for identifying locations where the problem is greatest and/or more acute..." (Corben, 1996). While our analyses replicate others that have shown that areas around bars or other establishments which serve alcohol are frequent hotspots for pedestrian injury (Schuurman, 2009), they further quantify that risk, place it in the commonly

utilized spatial perspective of a census tract, and demonstrate a methodological approach to surveillance of alcohol-related pedestrian and bicyclist injuries in urban environments.

We believe this work adds to the existing research on pedestrian injury epidemiology in three ways. First, the study presents alcohol-related pedestrian and bicyclist injury risk assessment at a finer level of geographic detail than has been generally been reported, which allows more opportunity for focused investigations and interventions. Second, the methods in this study, which have previously not been used for alcohol-related pedestrian injury research, offer practical tools for spatial analysis in injury epidemiology that might not otherwise be readily apparent. Finally, the study extends the well-recognized association of pedestrian injury with alcohol intoxication by quantifying pedestrian and bicyclist injury's association with alcohol outlets (Öström, 2001). Furthermore, the socioeconomic and traffic-related control variables may themselves offer additional insights into the complex interplay of physical and sociocultural environment in pedestrian injury risk.

We found place, in particular the presence of alcohol outlets in a census tract, to be a critically important determinant of alcohol-related pedestrian and bicyclist injury risk beyond other perhaps, more immediately apparent factors such as traffic density. There were areas in each borough of New York City where the risk of alcohol-related pedestrian injury was higher than the city as whole throughout the 10-year study period. The use of exceedance probabilities refines this characterization of risk by placing explicit probabilities on the observed risk estimates to identify those areas for which the increased risk was highly unlikely to be due to chance.

Injury risk at the census tract level was associated with social, economic and traffic-related factors. Census tracts benefited unequally from the over-all reductions, with some areas having consistently elevated risks compared to the city-wide experience, and others experiencing

sporadic years of increased risk. The kinds of small-area spatiotemporal Bayesian hierarchical modeling approaches used in this study are increasingly a practical option for epidemiologists interested in evaluating risk of disease outcomes in the context of place and time.

Pedestrian injury risk decreased with increasing average vehicle speed in a census tract. There are a number of possible explanations for this. We do not know the speed of the vehicles that struck pedestrians, so while the average speed was lower, the vehicles striking pedestrians may have been traveling at higher than average speeds. In addition, slower speeds may indicate more vehicles, which increases overall exposure to traffic. It may also be that because the average vehicle speed and traffic density variables in these analyses included highways, bridges and tunnels, areas with higher average speeds would be less likely to be frequented by pedestrians, decreasing exposure. A sensitivity analysis using a version of the speed and density variables that did not include highways, bridges and tunnels, though, returned essentially the same results. This may also be an artifact of measurement error due to using census tract population as a proxy for pedestrian population. Some tourist and retail-oriented neighborhoods, such as Greenwich Village and SoHo, have very high pedestrian counts and very low vehicle speeds. Finally, average speeds are a group-level measure aggregated from individual measurements; though analysis of measures aggregated from continuous variables are less prone to bias away from the null than aggregate from dichotomous measures, small amounts of non-differential measurement error at the individual level may lead to bias away from the null at the group level if fewer measurements contribute to the aggregate measure (Mooney, 2014).

We believe our model represents an acceptable trade off between goodness of fit and complexity, and that the variables we included capture much of the potential confounding effects associated with areas where alcohol establishments might be typically located. As a sensitivity analysis for this, we re-ran the model including a variable for the proportion of the total area of

space in a census tract proportion of space in a census tract accounted for by retail activity (New York City Department of City Planning, 2016; Neckerman, 2009). The addition of this variable did not change our original results in any meaningful way. We ran a further analysis with a measure of the health characteristics of the local retail food environment in a census tract obtained from the Centers for Disease Control and Prevention. (CDC, 2011). The results were similarly unchanged.

Ideally, external validation would include the onsite evaluation of census tracts determined by initial analyses to have a high probability of being at higher-than-average risk of pedestrian injury. Site visits can yield deep and practical insights about local risks, (Hameed, 2004) but are expensive, time consuming and require complex sampling strategies. Virtual site visits using tools like Google street view to collect and evaluate local geographic data with less expense and difficulty have been proposed and demonstrated. (Mooney, 2015) While we attempted to illustrate the results using satellite images of a single census tract in our study, formal validation efforts would include statistical approaches, such as comparing predictions based on the model to actual data from years beyond 2010, or could involve statistical associations with external sources of covariate data. In one evaluation of fixed local covariates, the increased frequency of pedestrian crashes in low income, high minority areas in Chicago was shown to be associated with walkability and access to transit options. (Cottrill, 2010)

There are a number of important limitations in this study. We could not determine whether alcohol contributed to the risk of injury through the pedestrian / bicyclist or the driver. Alcohol outlets were tightly clustered in our sample, with 22,464 licenses located within 198 census tracts. For this reason, we chose to use a binary indicator for the presence or absence of a licensed outlet in a census tract, rather than the incremental effect of each additional licensee. We restricted our analyses to only those incidents in which law enforcement clearly determined

alcohol to have been a primary contributing factor. We felt this strengthened the specificity of any result, but it is likely that additional alcohol-related injuries occurred. Having 2000-2010 crash risks predicted by 2015 alcohol outlets and 2010 income is not optimal. There is some evidence that the number of alcohol outlets in New York City have been increasing, so this will likely bias these effects toward zero (Fickenscher, 2014). Future research on the spatial distribution of alcohol-related pedestrian injury might benefit from use of longitudinal business registration data, such as that offered by the National Establishment Time-Series dataset (Walls, 2011).

While the Bayesian CAR model we used "draws strength" from surrounding areas and is a way to smooth these edge effects, future analyses could profitably include opportunities to look at spatially-lagged impacts on census tracts that perhaps do not have alcohol outlets but are adjacent to those that do have alcohol outlets. These kind of effects may evidence as patterns in drinking and driving arrests. Additionally, we did not, in this analysis, consider the different types of alcohol outlets in a census tract. We believe this first analysis must necessarily address the universe of alcohol outlets before parsing out effects based on subpopulations. We similarly plan to conduct such analyses in the future.

Two of the statistical approaches used in this study also come with caveats. First, exceedance probabilities, which have been proposed as a Bayesian approach to hotspot identification and are in relatively common use, (Hossain, 2006; Hossain, 2010) can be sensitive to model specifications. (Lawson, 2006) And second, the proportion of variance explained by the spatially structured conditional autoregression term is not strictly speaking a variance partition coefficient, because the structured and unstructured spatial terms may not be directly comparable. It is, though, an indication of the relative contribution of each of the spatial components.

There were 2,217 census tracts in 2000, and 2,168 tracts in 2010, for an overall decrease of 2.2%. There were 288 census tracts in the 2000 data set that are not in the 2010 data set. There were conversely 239 census tracts in the 2010 data set, that were not in the 2000 data set. To ensure the consistency and reliability of the population data across the 10 years of study, and across the analytic approaches that took geography into account, we restricted the analyses to those census tracts that were present in both census years. This resulted in some raggedness to the adjacency matrix, but we felt allowed for more valid comparisons across space and time, and between intervention and non-intervention sites. Finally, the boundary line between census tracts is typically a street; in our study, any collision that fell on such a street has been assigned to one tract or the other based on the coordinates reported in records. We expect that any error due to boundary effects is absorbed into the spatial autoregressive error term and results in a bias towards the null.

We conclude that the presence of one or more alcohol outlets in a census tract in an urban environment increases the risk of bicyclist / pedestrian injury in important and meaningful ways. This increased risk is beyond what might be expected based on associated variables like vehicle and pedestrian density, or socioeconomics. Identifying areas of increased risk due to alcohol allow the targeting of interventions to prevent and control alcohol-related pedestrian and bicyclist injuries.

Tables and Figures

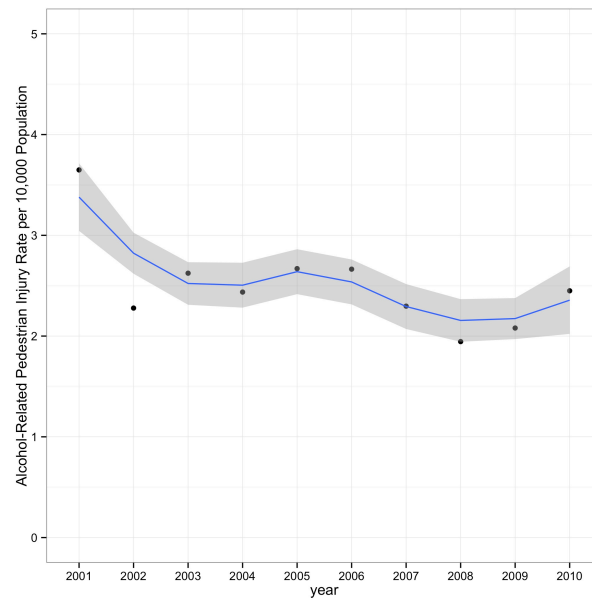


Figure 1: Yearly Alcohol-Related Pedestrian and Bicyclist Injury Rate per 100,000 Population.

New York City, 2001-2010.

		95 % Credible Interval
At least One Alcohol Outlet	1.47	(1.13, 1.91)
Social Fragmentation	1.25	(1.17, 1.35)
Median Household Income	0.99	(0.98, 0.99)
(per \$10,000)		
Traffic Density, z-score	1.28	(1.16, 1.40)
Average Vehicle Speed, per	0.69	(0.55, 0.87)
10 MPH increment		

Table 1: Relative Risk of Pedestrian Bicyclist Injury in Relation to Built Environment Characteristics, New York City, 2001-2010

Spatially Structured Risk Estimates,
Pedestrian
Injuries, New York City Census Tracts, 2001-2010

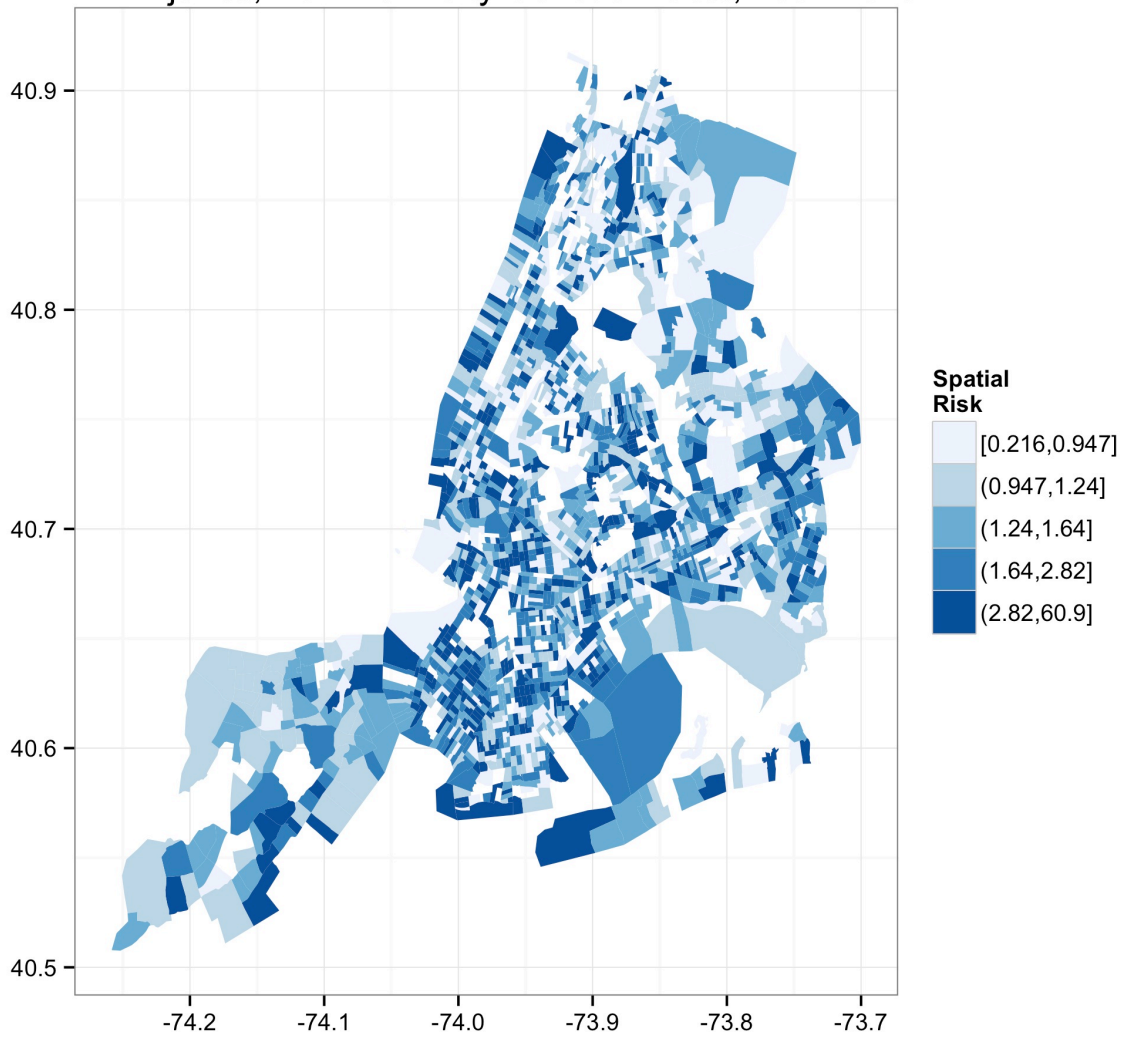


Figure 2: Relative risk of alcohol-related pedestrian injury, New York City census tracts 2001-2010.

Probability Exceedence RR > 3,
Pedestrian Injuries,
New York City Census Tracts, 2001-2010

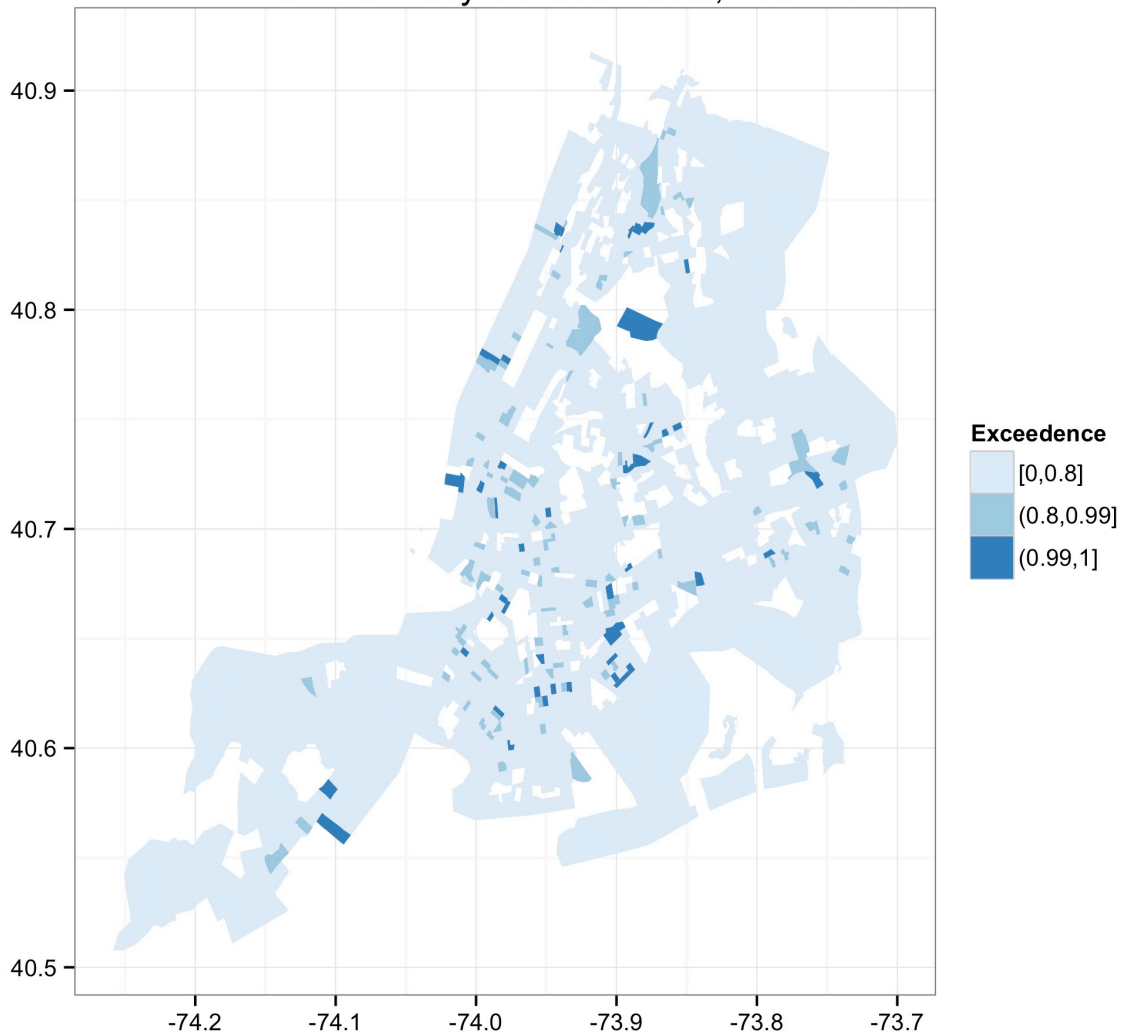


Figure 3: Probability of relative risk of alcohol-related pedestrian or bicyclist motor vehicle injury greater than 3, New York City census tracts 2001-2010.

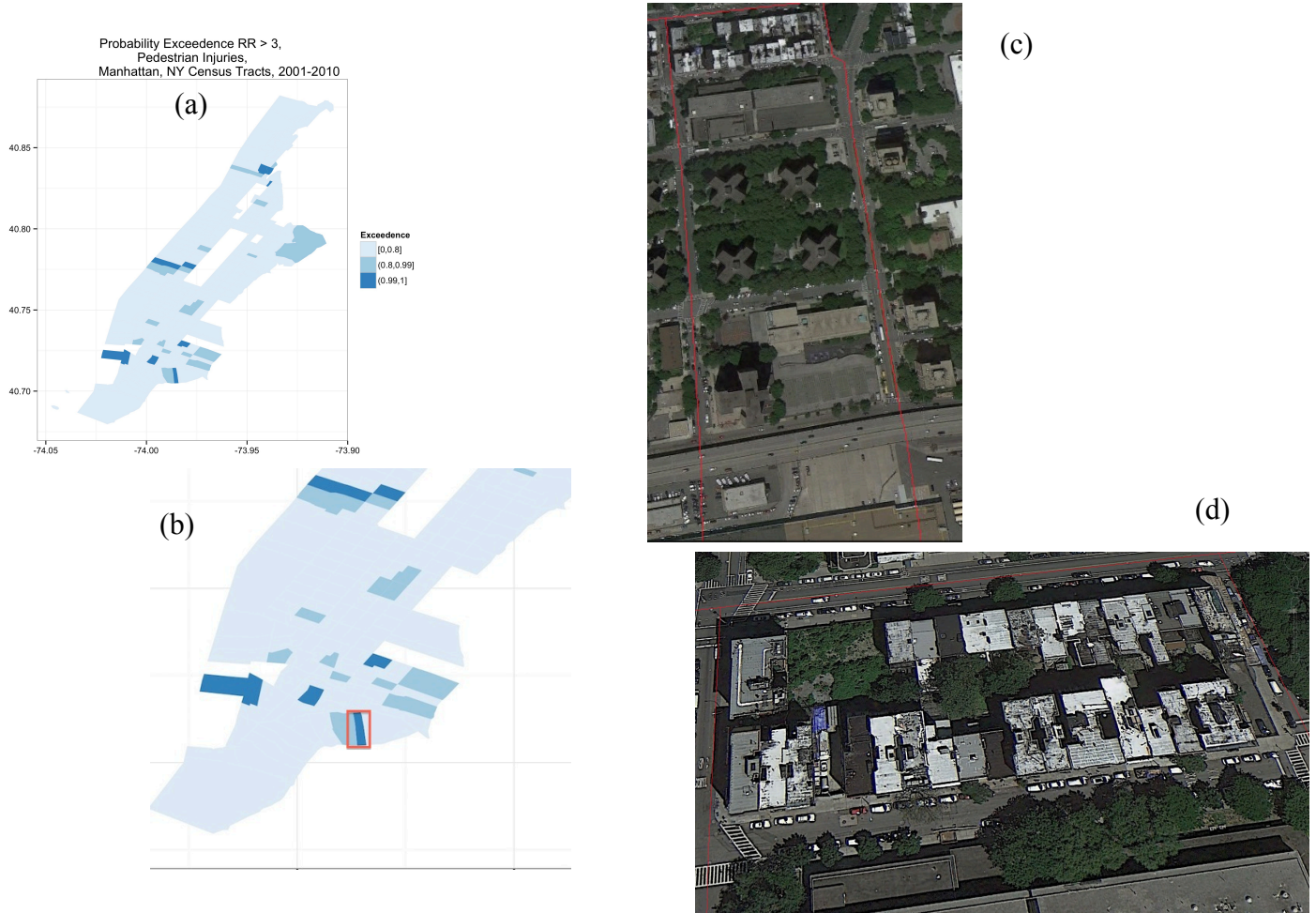


Figure 4. (a) Probability map of alcohol-related pedestrian or bicyclist injury relative risk greater than 3 in Manhattan, (b) Single census tract with at least 85% probability of relative risk greater than 3, (c) Zooming in on the census tract, (d) General built environmental characteristics of census tract. Alcohol-related pedestrian and bicyclist injuries, New York City census tracts, 2001-2010.



Figure 5. Google Street View images from selected Manhattan census tract with at least 85% probability of relative risk of alcohol-related pedestrian or bicyclist injury greater than 3.

Competing Interests The authors have no competing interests to report.

Author Contributions CD Conceived the study, obtained the data , conducted the analyses and wrote the first draft. SM contributed to the analyses, literature review and interpretation of the results. SF and SW assisted with writing and editing the report and contributed to the interpretation of the results.

Citations

Banerjee, 2004. Banerjee S, Carlin BP, Gelfand AE, editors. Hierarchical modeling and analysis for spatial data. Boca Raton, Fla.: Chapman & Hall/CRC; 2004.

Bernstein, 2007. Bernstein, Kyle T., et al. "The built environment and alcohol consumption in urban neighborhoods." *Drug and alcohol dependence* 91.2 (2007): 244-252.

Besag, 1991. Besag J, York J, Mollie A. Bayesian image restoration, with two applications in spatial statistics. *Ann Inst Statist Math.* 1991;43(1):1–59.

Best, 2005. Best N, Richardson S, Thomson A. A comparison of Bayesian spatial models for disease mapping. *Stat Methods Med Res.* 2005;14(1):35–59.

Bivand, 2013. Bivand R. *spdep: Spatial dependence: weighting schemes, statistics and models.* 2013;.

Blangiardo, 2013. Blangiardo M, Cameletti M, Baio G, Rue H. Spatial and spatio-temporal models with R-INLA. *Spat Spatiotemporal Epidemiol.* 2013;7:39–55.

Campbell, 2009. Campbell, Carla Alexia, et al. "The effectiveness of limiting alcohol outlet density as a means of reducing excessive alcohol consumption and alcohol-related harms." *American journal of preventive medicine* 37.6 (2009): 556-569.

CDC, 2011. Centers for Disease Control and Prevention. National Center for Chronic Disease Prevention and Health Promotion. Division of Nutrition, Physical Activity, and Obesity Census Tract Level State Maps of the Modified Retail Food Environment Index (mRFEI). Available at ftp://ftp.cdc.gov/pub/Publications/dnpao/census-tract-level-state-maps-mrfei_TAG508.pdf.

Accessed 21 January 2016.

Chang, 2014. Chang D. National Pedestrian Crash Report. National Highway Traffic and Safety Administration. <http://www.walkinginfo.org/library/details.cfm?id=4396>. Accessed 20 October 2014.

Chang,2008. Chang, Dow. National pedestrian crash report. No. HS-810 968. 2008.

Chen, 2013. Chen, et al. Safety countermeasures and crash reduction in New York City— Experience and lessons learned. *Accident Analysis and Prevention* 50 (2013) 312–322

Clayton, 1992. Clayton D, Bernardinelli L. Bayesian methods for mapping disease risk. *Geographical and environmental epidemiology: methods for small area studies*. 1992;p. 205–220.

Congdon, 2013. Congdon P. Assessing the impact of socioeconomic variables on small area variations in suicide outcomes in England. *Int J Environ Res Public Health*. 2013;10(1):158–177.

Corben, 1996. Corben B, Diamantopoulou K, Mullan N, Mainka B. Environmental countermeasures for alcohol-related pedestrian crashes. REPORT. 1996;(101).

Cottrill, 2010. Cottrill C, Thakuria P. Evaluating pedestrian crashes in areas with high low-income or minority populations. *Accid Anal Prev*. 2010;42(6):1718–1728.

DiMaggio, 2013. DiMaggio C, Li G. Effectiveness of a safe routes to school program in preventing school-aged pedestrian injury. *Pediatrics*. 2013;131 (2):290-296.

DiMaggio, 2014. DiMaggio C, Chen Q, Muennig P, Li G. Timing and effect of a safe routes to school program on child pedestrian injury risk during school travel hours: Bayesian changepoint and difference-in-differences analysis. *Injury Epidemiology*. 2014;doi:10.1186/s40621-014-0017-0 (1:17).]

Dultz, 2011. Dultz L, Frangos S, Foltin G, Marr M, Simon R, Bholat O, et al. Alcohol use by pedestrians who are struck by motor vehicles: how drinking influences behaviors, medical management, and outcomes. *J Trauma*. 2011;71(5):1252–1257.

Dultz, 2013. Dultz LA, Foltin G, Simon R, Wall SP, Levine DA, Bholat O, Slaughter-Larkem D, Jacko S, Marr M, Glass NE, Pachter HL, Frangos SG. Vulnerable roadway users struck by motor vehicles at the center of the safest, large US city. *J Trauma Acute Care Surg*. 2013 Apr;74(4):1138-45.

FHWA, 2010. Federal Highway Administration. Pedestrian Safety Strategic Plan: Background Report. 2010. http://safety.fhwa.dot.gov/ped_bike/pssp/background/psafety.cfm. Accessed 20 October 2015.

Fickenscher, 014. Fickenscher L. Grape expectations: More and more small, upscale wine shops are opening in the city. Crain's New York Business. January 12, 2014. http://www.crainsnewyork.com/article/20140112/RETAIL_APPAREL/301129982/grape-expectations Accessed 13 January 2016.

Gruenewald, 2002. Gruenewald, Paul J., Fred W. Johnson, and Andrew J. Treno. "Outlets, drinking and driving: a multilevel analysis of availability." *Journal of studies on alcohol* 63.4 (2002): 460-468.

Hameed, 2004. Hameed S, Popkin C, Cohn S, Johnson E. The epidemic of pediatric traffic injuries in South Florida: a review of the problem and initial results of a prospective surveillance strategy. *Am J Public Health*. 2004;94(4):554–556.

Holubowycz, 1995. Holubowycz O. Age, sex, and blood alcohol concentration of killed and injured pedestrians. *Accid Anal Prev*. 1995;27(3):417–422.

Hossain, 2006. Hossain M, Lawson AB. Cluster detection diagnostics for small area health data: with reference to evaluation of local likelihood models. *Statistics in medicine*. 2006;25(5):771–786.

Hossain, 2010. Hossain MM, Lawson AB. Space-time Bayesian small area disease risk models: development and evaluation with a focus on cluster detection. *Environmental and ecological statistics*. 2010;17(1):73–95.

Karmin, 2013. Karmin C. Hotels Swell in Manhattan. *The Wall Street Journal*. 2013;Commercial Real Estate.

Kuhlmann, 2009. Kuhlmann, Anne K. Sebert, et al. "Environmental characteristics associated with pedestrian–motor vehicle collisions in Denver, Colorado." *American journal of public health* 99.9 (2009): 1632.

LaScala, 2001. LaScala, Elizabeth A., Fred W. Johnson, and Paul J. Gruenewald. "Neighborhood characteristics of alcohol-related pedestrian injury collisions: a geostatistical analysis." *Prevention Science* 2.2 (2001): 123-134.

Lawson, 2000. Lawson A, Biggeri A, Boehning D, Lesaffre E, Viel J, Clark A, et al. Disease mapping models: an empirical evaluation. Disease Mapping Collaborative Group. *Stat Med.* 2000;19(17-18):2217–2241.

Lawson, 2006. Lawson A. Comment: Exceedence probabilities in the analysis of disease maps where risk anomalies are present. 2006;.

Lawson, 2013. Lawson AB. *Bayesian Disease Mapping: Hierarchical Modeling in Spatial Epidemiology*, Second Edition (Chapman & Hall/CRC Interdisciplinary Statistics). Chapman and Hall/CRC; 2013.

Lewin-Koh, 2012. Lewin-Koh R Nicholas J Bivand. *mapproj: Tools for reading and handling spatial objects*. R package version 08-14. 2012;.

MMWR, 2001. Alcohol involvement in fatal motor-vehicle crashes—United States, 1999-2000. *MMWR Morb Mortal Wkly Rep.* 2001;50(47):1064–1065.

Mooney, 2014. Mooney, Stephen J., Catherine A. Richards, and Andrew G. Rundle. "There goes the neighborhood effect: bias owing to nondifferential measurement error in the construction of neighborhood contextual measures." *Epidemiology* 25.4 (2014): 528-535.

Mooney 2016. Mooney SJ, DiMaggio CJ, Lovasi GS, Neckerman KM, Bader MDM, Teitler JO, Sheehan DM, Jack DW, Rundle AG. Using Google Street View to Assess Environmental

Contributions to Pedestrian Injury. American Journal of Public Health, Published online ahead of print January 21, 2016: e1–e8. doi:10.2105/AJPH.

Muennig PA, Epstein M, Li G, DiMaggio C. The Cost-Effectiveness of New York City's Safe Routes to School Program. Am J Public Health. 2014;104 (7):1294-1299.

NHTSA 2010. National Highway Traffic and Safety Administration, Safety. Early Estimate of Motor Vehicle Traffic Fatalities for the First Half of 2010. Traffic Safety Facts;DOT HS 811 403.

NHTSA, 2007. National Highway Traffic and Safety Administration. Traffic Safety Facts 2007.

NHTSA, 2011. National Highway Traffic and Safety Administration. Traffic Safety Facts, 2011: Bicyclists and other cyclists. DOT HS. 2011;810:986.

Neckerman, 2009. Neckerman, Kathryn M., et al. "Disparities in urban neighborhood conditions: evidence from GIS measures and field observation in New York City." Journal of Public Health Policy (2009): S264-S285.

NYC Department of City Planning, 2016. City of New York, Department of City Planning. Bytes of the Big Apple, PLUTO files. Available at <http://www.nyc.gov/html/dcp/bytes/>. Accessed 21 January 2016.

NYC, 2015. Office of the Mayor. City of New York. Vision Zero Action Plan 2014. <http://www.nyc.gov/html/visionzero/pdf/nyc-vision-zero-action-plan.pdf>. Accessed 20 October 2015

NYSLA, 2015a. State of New York. New York State Liquor Authority. <https://www.tran.sla.ny.gov/JSP/query/PublicQueryAdvanceSearchPage.jsp>. Accessed 7 October 2015.

NYSLA, 2015b. State of New York. New York State Liquor Authority. <https://www.sla.ny.gov/definition-of-license-classes>. Accessed 7 October 2015.

Öström, 2001. Öström, Mats, and Anders Eriksson. "Pedestrian fatalities and alcohol." *Accident Analysis & Prevention* 33.2 (2001): 173-180.

Pabayo, 2014. Pabayo R, Molnar B, Street N, Kawachi I. The relationship between social fragmentation and sleep among adolescents living in Boston, Massachusetts. *J Public Health (Oxf)*. 2014;.

Patek, 2013. Patek G, Thoma T. Commentary: Pedestrian fatalities—a problem on the rise. *Ann Emerg Med*. 2013;62(6):613–615.

Peden, 2004. Peden M, Sminkey L. World Health Organization dedicates World Health Day to road safety. *Inj Prev*. 2004;10(2):67.

Ponicki, 2013. Ponicki, William R., Paul J. Gruenewald, and Lillian G. Remer. "Spatial panel analyses of alcohol outlets and motor vehicle crashes in California: 1999-2008." *Accident Analysis & Prevention* 55 (2013): 135-143.

Richardson, 2004. Richardson S, Thomson A, Best N, Elliott P. Interpreting posterior relative risk estimates in disease-mapping studies. *Environ Health Perspect*. 2004;112(9):1016–1025.

Ross, 2013. Ross Z, Ito K, Johnson S, Yee M, Pezeshki G, Clougherty J, et al. Spatial and temporal estimation of air pollutants in New York City: exposure assignment for use in a birth outcomes study. *Environ Health*. 2013;12:51.

Rue, 2013. Rue H, Martino S, Lindgren F, Simpson D, Riebler A. INLA: Functions which allow to perform full Bayesian analysis of latent Gaussian models using Integrated Nested Laplace Approximation. 2013;.

Schuurman, 2009. Schuurman N, Cinnamon J, Crooks V, Hameed S. Pedestrian injury and the built environment: an environmental scan of hotspots. *BMC Public Health*. 2009;9:233.

Sparks, 2011. Sparks, Corey S. "Violent crime in San Antonio, Texas: An application of spatial epidemiological methods." *Spatial and spatio-temporal epidemiology* 2.4 (2011): 301-309.

Sweden, 2015. Sweden. Vision Zero Initiative. <http://www.visionzeroinitiative.com/>. Accessed 20 October 2015.

Texas A and M, 2015. Texas A and M University. Texas A and M Geoservices System. 2015;.

Toomey, 2012. Toomey, Traci L., et al. "The association between density of alcohol establishments and violent crime within urban neighborhoods." *Alcoholism: Clinical and Experimental Research* 36.8 (2012): 1468-1473.

Treno, 2007. Treno, Andrew J., et al. "The impact of outlet densities on alcohol-related crashes: a spatial panel approach." *Accident Analysis & Prevention* 39.5 (2007): 894-901.

US Census Bureau, 2010. US Census Bureau. American factFinder. Washington, DC : U.S. Census Bureau; 2010.

Walls, 2011. Walls D, Associates. NETS overview: National Establishment Time-Series (NETS) database. 2011

Yu, 2008. Yu, Qingzhao, et al. "Multilevel spatio-temporal dual changepoint models for relating alcohol outlet destruction and changes in neighbourhood rates of assaultive violence." *Geospatial health* 2.2 (2008): 161.