

European Heart Journal: Acute Cardiovascular Care

<http://acc.sagepub.com/>

Relationship between premature ventricular complexes and depressive symptoms in non-ST-elevation acute coronary syndrome

William Whang, James Peacock, Ana V Soto, Tomas Borda, Anupama B Bhatt, Safiya I Richardson, Matthew Burg and Karina W Davidson

European Heart Journal: Acute Cardiovascular Care 2013 2: 61 originally published online 29 January 2013
DOI: 10.1177/2048872613476101

The online version of this article can be found at:
<http://acc.sagepub.com/content/2/1/61>

Published by:

European Society of Cardiology



EUROPEAN
SOCIETY OF
CARDIOLOGY®

ESC Working Group on Acute Cardiac Care



Acute
Cardiovascular
Care Association
A Registered Branch of the ESC

and

<http://www.sagepublications.com>

Additional services and information for *European Heart Journal: Acute Cardiovascular Care* can be found at:

Email Alerts: <http://acc.sagepub.com/cgi/alerts>

Subscriptions: <http://acc.sagepub.com/subscriptions>

Reprints: <http://www.sagepub.com/journalsReprints.nav>

Permissions: <http://www.sagepub.com/journalsPermissions.nav>

>> [Version of Record](#) - Mar 7, 2013

[OnlineFirst Version of Record](#) - Jan 29, 2013

[What is This?](#)

Relationship between premature ventricular complexes and depressive symptoms in non-ST-elevation acute coronary syndrome

European Heart Journal: Acute Cardiovascular Care
2(1) 61–67

© The European Society of Cardiology 2013

Reprints and permission:

sagepub.co.uk/journalsPermissions.nav

DOI: 10.1177/2048872613476101

acc.sagepub.com



William Whang¹, James Peacock¹, Ana V Soto¹, Tomas Borda¹,
Anupama B Bhatt¹, Safiya I Richardson¹, Matthew Burg^{1,2} and
Karina W Davidson¹

Abstract

Aims: Depression is a recognized risk marker for mortality among acute coronary syndrome (ACS) patients. We hypothesized that ventricular arrhythmia detected by inpatient telemetry monitoring is more frequent among ACS patients with elevated depressive symptoms compared to those without depressive symptoms.

Methods and results: We analysed data from patients enrolled in a prospective observational study of depression in ACS. Telemetry recordings during the index admission (average recording 21.3±3.0 hours) were analysed for frequent premature ventricular complexes (PVCs), defined as ≥10 per hour. The self-report Beck Depression Inventory (BDI) was used to assess depressive symptoms. Among 200 ACS patients, frequent PVCs were observed in 29% of patients with moderate depressive symptoms (BDI ≥10), 27% of those with mild symptoms (BDI 5–9), and only 11% of those with no/minimal symptoms ($p=0.02$). Log-transformed PVCs per hour were associated with depressive symptom category ($p=0.008$). In a multivariable logistic regression model that included age, gender, left ventricular ejection fraction, cardiovascular risk score, heart rate, and QT interval, mild symptoms (OR 3.02, 95% CI 0.97–9.43, $p=0.058$) and moderate-severe symptoms (OR 3.94, 95% CI 1.27–12.22, $p=0.018$) were associated with frequent PVCs.

Conclusions: In this sample of ACS patients, depressive symptoms were independently associated with frequent PVCs during inpatient telemetry monitoring.

Keywords

Acute coronary syndrome, arrhythmia, depression

Received: 30 June 2012; accepted: 7 January 2012

Introduction

Depression is a predictor of early mortality in patients after acute coronary syndrome (ACS), despite adjustment for coronary artery disease (CAD) severity.^{1,2} More than one-third of all mortality in patients with CAD is due to sudden cardiac death, typically from arrhythmia such as sustained ventricular tachycardia or ventricular fibrillation,³ and studies in a variety of populations have suggested that depression is associated with sudden cardiac death and ventricular arrhythmia.^{4–7} In a study of patients with implantable cardioverter defibrillators, depressive symptoms were associated with ventricular arrhythmias that resulted in shock for ventricular arrhythmia, and this relationship was

stronger among the subgroup of patients with coronary artery disease.⁸

Cardiac monitoring has been used after ACS to detect arrhythmias, such as ventricular tachycardia or frequent premature ventricular complexes (PVCs). Even in the present

¹Columbia University, New York, NY, USA

²Yale University School of Medicine, New Haven, CT, USA

Corresponding author:

William Whang, PH9–321, 622 West 168th Street, New York, NY
10032, USA.

Email: ww42@columbia.edu

era of coronary stenting and effective medical therapies, ventricular arrhythmia continues to be a risk marker for future mortality in ACS.^{9–12} There have been relatively few prior studies of the relationship between ventricular arrhythmia and depression in CAD patients, with conflicting results.^{6,13,14} One of the initial studies that defined the importance of depression for prognosis after myocardial infarction documented a markedly elevated risk of mortality among patients with both depression and more ventricular arrhythmia in the form of frequent PVCs (odds ratio for interaction ~6).²

In this study we hypothesized that, among patients with ACS, depressive symptoms were associated with more frequent ventricular arrhythmia in the form of PVCs measured by inpatient telemetry monitoring. In addition, based on a recent analysis that noted a gender difference in electrocardiographic QT interval changes associated with depressive symptoms,¹⁵ we hypothesized that there was a stronger relationship between PVCs and depressive symptoms in women than in men.

Methods

Institutional Review Board approval for this study was obtained at Columbia University. The cohort was drawn from among the first 500 patients enrolled in an ongoing prospective cohort study of depression after ACS, Prescription Use, Lifestyle, and Stress Evaluation (PULSE). Participants for this study were recruited from among patients admitted to Columbia University Medical Center between February 2009 and June 2010.

ACS events were defined according to American Heart Association/American College of Cardiology criteria¹⁶ as either acute myocardial infarction (MI) or unstable angina. All patients had symptoms consistent with acute myocardial ischaemia and at least one of the following: ischaemic electrocardiographic changes (i.e. ST depression and/or T-wave abnormalities), an angiogram indicative of CAD on current admission, and/or documented history of CAD according to a stress test during the index admission or previous coronary angiogram. Patients who presented with an acute rise in serum troponin I levels >0.4 ng/ml were categorized as MI. A study cardiologist confirmed ACS eligibility for all patients. Patients with ST elevation were excluded from the analysis, to prevent possible confounding associated with reperfusion-related arrhythmias in this group.^{17,18}

The Beck Depression Inventory (BDI),¹⁹ a 21-item self-report measure of depressive symptom severity, was administered within 1 week after the index ACS event, while patients were still hospitalized, by research coordinators who were trained by study psychologists and whose interviews were reviewed regularly in order to standardize administration of assessment measures. The BDI has repeatedly been associated with long-term mortality after ACS.^{2,20–22} Depressive symptoms were categorized according to BDI

score: 0–4 (none/minimal symptoms), 5–9 (mild symptoms), or ≥10 (at least moderate symptoms).

Telemetry monitoring was performed via a 5-electrode continuous telemetry system that was fitted for clinical purposes on patients during their hospital stay (Philips Healthcare). The telemetry system used a template matching algorithm with a sampling rate of 125–250 samples per second to differentiate PVCs from normal QRS complexes in the ECG signal.²³ The sensitivity of the algorithm for PVC detection based on an analysis of 44 non-paced test signals from the 2-channel MIT-Beth Israel Hospital ECG database was 94%, and the false positive rate was 0.3%.²³ Summary reports were generated that estimated PVC counts and median heart rate on an hourly basis (Figure 1) and samples of ECG tracings were collected with each summary report (Figure 2). These reports were obtained from the medical record and tracings with 12 or more hours of recordings were included in the analysis. A cardiac electrophysiologist (WW) examined each tracing for accuracy blinded to BDI score, and tracings with false positive readings for PVCs were removed. In addition, tracings with ventricular paced rhythms or with atrial fibrillation or atrial flutter were removed from the analysis to minimize false-positive PVC counts. The simple average of PVC counts and heart rate during the recording period were estimated. PVC rates were dichotomized at ≥10 per hour or <10 per hour based on prior studies in patients with acute MI^{24,25} and unstable angina.²⁶

Twelve-lead ECG tracings from the index admission were obtained and the QT interval was measured from the onset of the QRS complex to the end of the T wave, defined as the point of return of the T wave to the isoelectric line or to the nadir between the T and U waves in cases where a U wave was present.²⁷ QT intervals were corrected for heart rate according to Fridericia's method ($QTcF = QT/RR^{1/3}$).¹⁵

Statistical analysis

Linear-by-linear association chi-squared tests for trends and linear regression were used to compare categorical and continuous measurements between groups with no/minimal depressive symptoms, mild symptoms, and at least moderate symptoms. Logistic regression models were used to estimate the relative odds of frequent PVCs (≥10 PVCs per hour) according to BDI category. Other variables included in the analyses were age, gender, non-white race, diabetes, left ejection fraction (LVEF), Global Registry of Acute Coronary Events (GRACE) risk score,²⁸ pre-admission beta-blocker use, antidepressant use, anti-arrhythmic medication use, heart rate, QTcF, and percutaneous coronary intervention (PCI). Linear regression was performed with natural log transformation of (PVCs per hour + 1) and BDI category as a continuous variable (0 for BDI score 0–4, 1 for BDI 5–9, or 2 for BDI ≥10). All analyses were performed using SPSS version 18 (SPSS, Chicago, IL, USA).

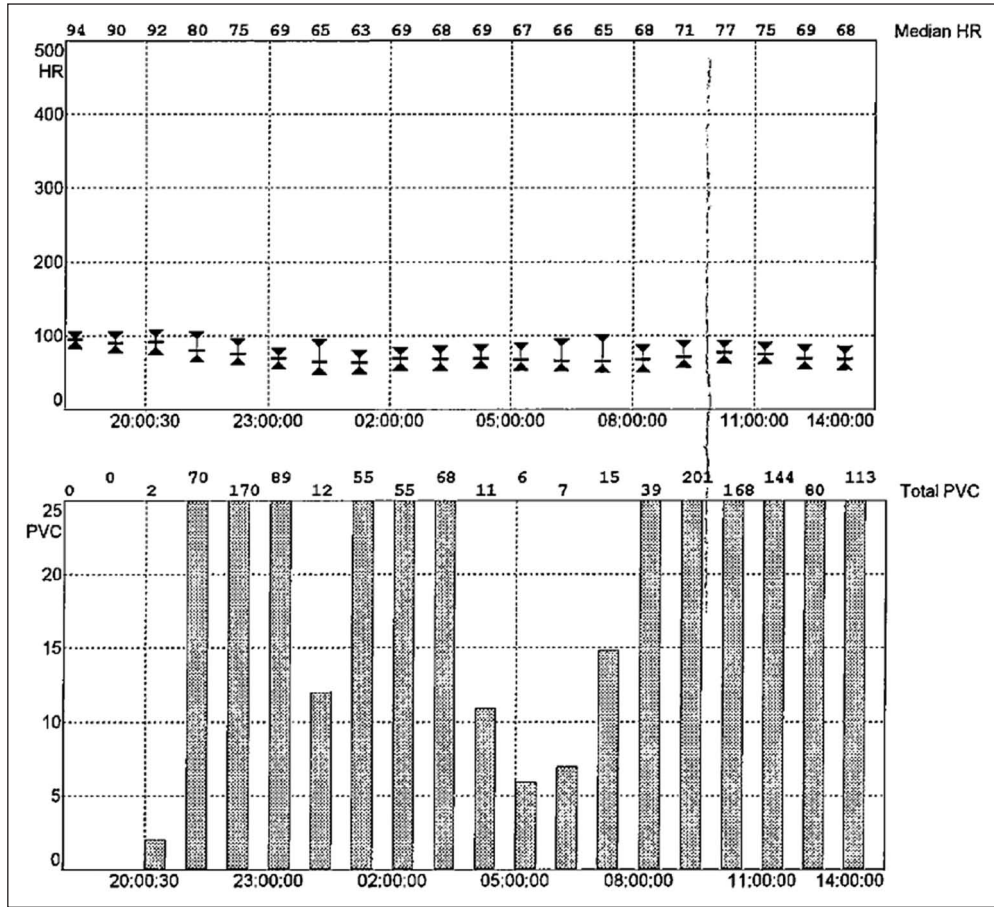


Figure 1. Example of cardiac telemetry report with median heart rate and premature ventricular complex counts per hour.

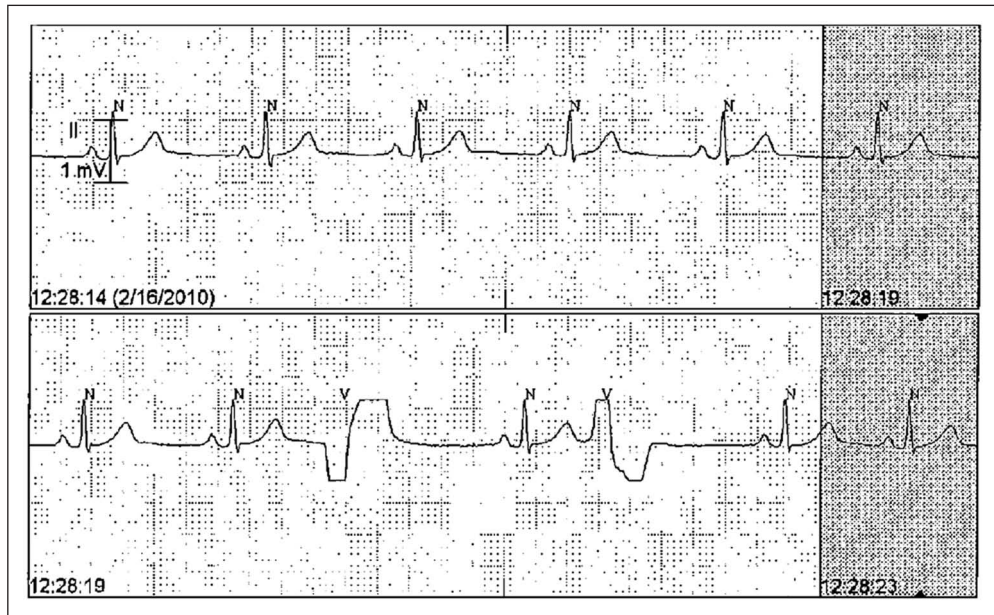


Figure 2. Sample of ECG tracing from cardiac telemetry report. N, normal QRS complex detected by the automatic algorithm; V, premature ventricular complex.

Table 1. Demographic and clinical characteristics of ACS patients by depressive symptom status.

	BDI 0–4 (n=53)	BDI 5–9 (n=68)	BDI ≥10 (n=79)	p-value
Age (years)	62.3±11.9	65.4±10.5	64.1±10.5	0.50
Female	10 (18.9)	23 (33.8)	40 (50.6)	<0.01
Non-white	15 (28.3)	28 (41.2)	37 (46.8)	0.04
Diabetes	23 (43.4)	19 (27.9)	34 (43.0)	0.84
Non-STEMI	18 (34.0)	24 (35.3)	20 (25.3)	0.25
LVEF <0.40	3 (5.7)	2 (2.9)	4 (5.1)	0.94
Antidepressant	0 (0)	3 (4.4)	6 (7.6)	<0.01
Beta-blocker	39 (73.6)	44 (64.7)	69 (87.3)	0.04
Anti-arrhythmic	2 (3.8)	4 (5.9)	6 (7.6)	0.37
Heart rate (beats per minute)	67.6±9.6	68.5±10.9	67.4±9.4	0.99
QTcF	419.4±22.2	432.8±34.0	431.6±25.4	0.019
≥10 PVCs/h	6 (11.1)	18 (26.5)	23 (29.1)	0.02

Values are mean±standard deviation or n (%).

BDI, Beck Depression Inventory; LVEF, left ventricular ejection fraction; QTcF, QT corrected for heart rate using Fridericia's method; STEMI, ST-elevation myocardial infarction.

Results

Among the first 500 patients enrolled in PULSE, 443 patients presented with non-ST-elevation ACS. Telemetry tracings were retrieved in 237 (54%) patients; the most common reason for lack of tracings was that summary telemetry reports became part of the medical record more than 5 months into the study, after 109 patients had already been enrolled in PULSE. Patients with and without retrieved tracings did not differ on the basis of age ($p=0.10$), sex ($p=0.84$), BDI score ($p=0.64$), or GRACE risk score ($p=0.34$). However, patients with retrieved tracings were less likely to have LVEF <0.40 (7.6% vs. 14.1%, $p=0.03$). Among those with retrieved tracings, 13 were removed from the analysis for misspecification of PVCs, eight for atrial fibrillation as the dominant rhythm, eight due to predominant ventricular pacing, five due to fewer than 12 hours of recording, and three due to collection prior to PCI, resulting in a sample size of 200.

Among 200 ACS patients, 21.3±3.0 hours of telemetry tracings were collected per patient, and among the 152 (76%) patients who underwent PCI during hospitalization, tracings were collected starting a median 5 hours after the intervention (interquartile range 3–12 hours). Minimal/no depressive symptoms were reported by 53 (27%) patients, 68 (34%) had mild symptoms, and 79 (40%) had at least moderate symptoms (Table 1). Women and non-white patients were more likely to report depressive symptoms. The percentage of patients who presented with MI and who had reduced LVEF <0.40 did not differ significantly by BDI category. There was a U-shaped relationship between beta-blocker use and reported depressive symptoms, and as expected, antidepressant use was more common in the groups with higher BDI score. Average heart rate was similar across BDI category, and of note, QTcF was higher in patients with more than minimal/no depressive symptoms.

Frequent PVCs were observed in only 11% of those with no/minimal symptoms, 27% of those with mild symptoms, and 29% of patients with moderate depressive symptoms (p for trend=0.02).

In a multivariable logistic regression model that included age, gender, non-white race, LVEF, GRACE risk score, diabetes, beta-blocker use, antidepressant use, anti-arrhythmic medication, heart rate, QTcF, and PCI (Table 2), there was a trend between mild symptoms (OR 3.02, 95% CI 0.97–9.43, $p=0.058$) and frequent PVCs, and a statistically significant relationship between moderate-severe symptoms (OR 3.94, 95% CI 1.27–12.22, $p=0.018$) and frequent PVCs. Log-transformed PVCs per hour were also associated with BDI category (1.11±1.25 for no/minimal symptoms, 1.61±1.47 for mild symptoms, 1.81±1.57 for moderate symptoms, p for trend=0.008, Figure 3). In a multivariable linear regression that used the log-transformed PVC as the dependent variable, BDI category remained associated with more frequent PVCs (Beta coefficient 0.36, 95% CI 0.09–0.63, $p=0.009$).

We did not detect a significant difference in the relationship between PVCs and BDI category by gender. Although our numbers were relatively small, the multivariable odds ratios for frequent PVCs by BDI category were similar in men (odds ratio 3.04 for mild symptoms, 6.67 for moderate or more) and women (odds ratio 3.19 for mild symptoms, 2.69 for moderate or more). Interaction terms for BDI category and gender were not statistically significant in multivariable logistic regression models ($p=0.30$).

Discussion

In this analysis of patients with non-ST-elevation ACS, we found that depressive symptoms were associated with more frequent PVCs captured by inpatient cardiac telemetry

Table 2. Multivariable logistic regression model of frequent premature ventricular complexes.

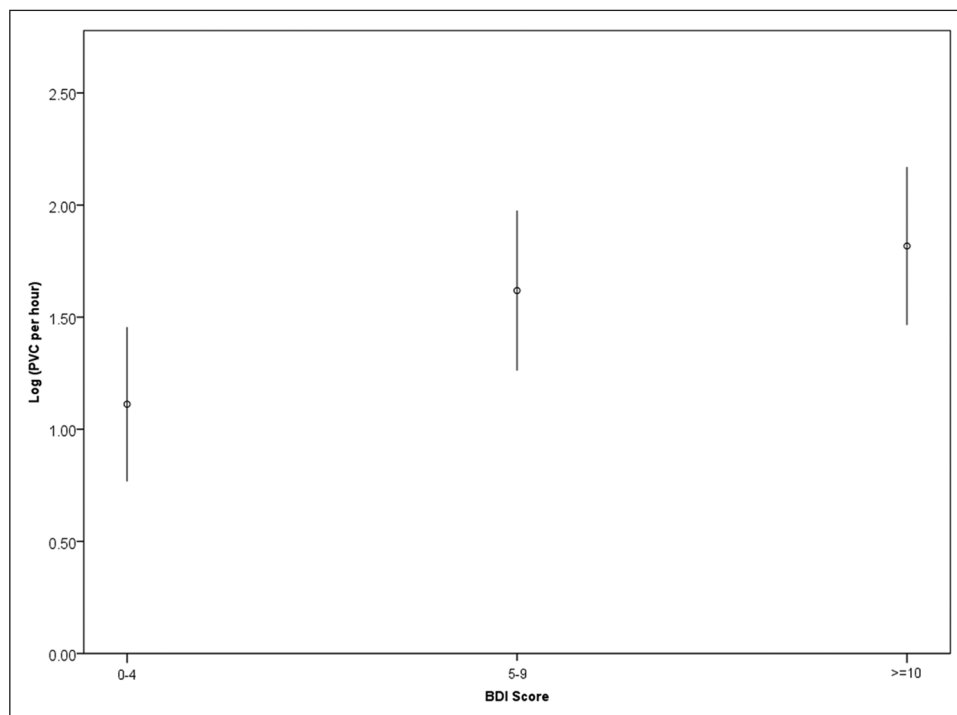
	Odds ratio (95% CI)	p-value
BDI 5–9	3.02 (0.97–9.43)	0.058
BDI ≥ 10	3.94 (1.27–12.22)	0.018
Age	1.01 (0.95–1.08)	0.67
Female	0.78 (0.34–1.79)	0.56
Non-white	1.69 (0.78–3.64)	0.18
Diabetes	1.09 (0.49–2.44)	0.84
GRACE score	1.02 (1.00–1.05)	0.06
LVEF (per 0.15 decrease)	2.16 (1.18–3.96)	0.01
Beta-blocker	0.93 (0.37–2.32)	0.87
Antidepressant	0.89 (0.16–4.97)	0.89
Anti-arrhythmic	0.62 (0.11–3.49)	0.59
Heart rate	1.00 (0.96–1.04)	0.95
QTcF	1.00 (0.99–1.01)	0.90
PCI	1.17 (0.43–2.89)	0.83

BDI, Beck Depression Inventory; GRACE, Global Registry of Acute Coronary Events; LVEF, left ventricular ejection fraction; PCI, percutaneous coronary intervention; QTcF, QT corrected for heart rate using Fridericia's method.

monitoring. Moderate-severe depressive symptoms, represented by BDI score ≥ 10 , were associated with frequent PVCs compared with no/minimal depressive symptoms. This relationship held despite adjustment for multiple

potential confounders, including gender, left ventricular ejection fraction, cardiovascular risk score, and QT interval. Thus, depressive symptoms may be associated with PVCs through mechanisms other than through QT interval prolongation. Our study adds to the current evidence base by reporting on an inpatient sample with ACS and by adjusting for more potential confounders than prior analyses.

There has been conflicting evidence as to whether ambient ventricular arrhythmia is more common in ACS patients with depression compared with those without depression. In a study of 103 patients with coronary artery disease, Carney documented more frequent ventricular arrhythmia by 24-hour ECG monitoring in 21 depressed patients (23.8%) compared with 82 non-depressed patients (3.7%), although patients with depression were also less likely to be treated with beta-blocker.¹³ By contrast, an analysis of 353 post-MI patients from the Cardiac Arrhythmia Pilot Study indicated a lack of relationship between depressive symptoms and PVC rate by 24-hour ECG monitoring.¹⁴ However, an inclusion criterion for this study was at least 10 PVCs per hour by baseline ambulatory ECG monitoring, making this a highly selected sample. In the Very Anxious Group Under Scrutiny (VAGUS) study, among 940 patients referred for cardiac catheterization, during median follow up of 3 years both depressive symptoms by BDI score and phobic anxiety were associated with ventricular arrhythmia episodes captured from medical record review.²⁹

**Figure 3.** Mean natural log-transformed premature ventricular complexes (PVC) per hour in 200 ACS patients by depressive symptom score.

Error bars indicate 95% confidence intervals. BDI, Beck Depression Inventory.

In the study by Frasure-Smith and colleagues,² among 194 post-MI patients BDI score ≥ 10 was not related to frequent PVC rates. However, 49% of the patients in this study underwent thrombolysis during the period of data collection from 1991 to 1992, implying that almost half the sample presented with ST-elevation MI (STEMI). In the present analysis we decided a priori not to include STEMI patients, but in order to better understand differences with the previous study we collected additional telemetry data from 33 STEMI patients in PULSE. To our surprise, only one instance of frequent PVCs was noted (3%), a much lower prevalence than noted in the unstable angina and non-STEMI patients in our sample. Thus, we would speculate that differences in the proportion of ACS patients with ST elevation explain the different relationship between BDI score and PVCs in the two studies.

There are several possible interpretations of our results. Depressive symptoms may be a marker for more severe cardiac disease that is not detected by other measures such as cardiac risk score or LVEF. However, it is also plausible that depression itself has a causative role in more frequent ventricular ectopy. Some,^{30–32} but not all,^{33,34} studies in coronary heart disease patients have suggested that depression is associated with reduced parasympathetic modulation of heart rate as measured by heart rate variability. In a case-control study involving 40 patients with recent acute MI, Carney and colleagues showed that QT interval variability by 24-hour Holter monitoring, a predictor of arrhythmia risk, was significantly greater in those with major depression.³⁵ In addition, coronary sinus sampling has indicated that certain subtypes of depression are associated with elevated cardiac norepinephrine spillover.³⁶ Given the recognized relationships between autonomic nervous system activity and risk of cardiac arrhythmia and sudden cardiac death,^{37–39} depressive symptoms may trigger more frequent ventricular arrhythmia through mechanisms involving autonomic dysfunction.

Our analysis has several important limitations. Our study was from a single centre, was limited to patients with non-ST-elevation ACS, and had a relatively low proportion of patients with reduced LVEF, limiting its generalizability. The cardiac telemetry monitoring used for PVC detection was collected primarily for clinical purposes and despite close review of each ECG signal that was included with the summary reports, there may be misspecification of PVC counts. We would not however, expect the error rate to differ by BDI score and confound our findings on this basis. We also do not yet have data on cardiac event rates for this analysis and cannot evaluate how PVC counts interacted with the relationship between depressive symptoms in predicting cardiac mortality. Other physiological measures such as heart rate variability were also not available to us as we did not have full disclosure ECG data. Despite this, PVC rates are an easily obtainable clinical measure and may still serve as a useful indicator of cardiac risk in ACS patients with depressive symptoms. Also, the proportion of

patients who were prescribed antidepressant medications was low, even among those with at least moderate symptoms, and we cannot assess how this therapy modulated the relationship between depressive symptoms and PVCs.

In summary, we found in this ACS sample that frequent PVCs detected by inpatient cardiac telemetry were associated with mild depressive symptoms. Further studies are warranted to assess the prognostic importance of ventricular arrhythmia in depressed patients and to define the mechanism of this relationship.

Funding

This work was supported by the National Institutes of Health (grants HL-088117, HC-25197, HL-076857, and HL-084034) and by a Scientist Development Grant to WW from the American Heart Association Founders Affiliate (grant number is 10SDG3720001).

References

1. van Melle JP, de Jonge P, Spijkerman TA, et al. Prognostic association of depression following myocardial infarction with mortality and cardiovascular events: a meta-analysis. *Psychosom Med* 2004; 66: 814–822.
2. Frasure-Smith N, Lesperance F and Talajic M. Depression and 18-month prognosis after myocardial infarction. *Circulation* 1995; 91: 999–1005.
3. Lloyd-Jones D, Adams RJ, Brown TM, et al. Executive summary: heart disease and stroke statistics – 2010 update: a report from the American Heart Association. *Circulation* 2010; 121: 948–954.
4. Empana JP, Jouven X, Lemaitre RN, et al. Clinical depression and risk of out-of-hospital cardiac arrest. *Arch Intern Med* 2006; 166: 195–200.
5. Brackett CD and Powell LH. Psychosocial and physiological predictors of sudden cardiac death after healing of acute myocardial infarction. *Am J Cardiol* 1988; 61: 979–983.
6. Follick MJ, Gorkin L, Capone RJ, et al. Psychological distress as a predictor of ventricular arrhythmias in a post-myocardial infarction population. *Am Heart J* 1988; 116: 32–36.
7. Lown B. Sudden cardiac death: biobehavioral perspective. *Circulation* 1987; 76: I186–I196.
8. Whang W, Albert CM, Sears SF Jr, et al. Depression as a predictor for appropriate shocks among patients with implantable cardioverter-defibrillators: results from the Triggers of Ventricular Arrhythmias (TOVA) study. *J Am Coll Cardiol* 2005; 45: 1090–1095.
9. Makikallio TH, Barthel P, Schneider R, et al. Prediction of sudden cardiac death after acute myocardial infarction: role of Holter monitoring in the modern treatment era. *Eur Heart J* 2005; 26: 762–769.
10. Maggioni AP, Zuanetti G, Franzosi MG, et al. Prevalence and prognostic significance of ventricular arrhythmias after acute myocardial infarction in the fibrinolytic era. GISSI-2 results. *Circulation* 1993; 87: 312–322.
11. Hohnloser SH, Klingenhoben T, Zabel M, et al. Prevalence, characteristics and prognostic value during long-term follow-up of nonsustained ventricular tachycardia after myocardial infarction in the thrombolytic era. *J Am Coll Cardiol* 1999; 33: 1895–1902.

12. Drogemuller A, Seidl K, Schiele R, et al. Prognostic value of non-sustained ventricular tachycardias after acute myocardial infarction in the thrombolytic era: importance of combination with frequent ventricular premature beats. *Z Kardiol* 2003; 92: 164–172.
13. Carney RM, Freedland KE, Rich MW, et al. Ventricular tachycardia and psychiatric depression in patients with coronary artery disease. *Am J Med* 1993; 95: 23–28.
14. Follick MJ, Ahern DK, Gorkin L, et al. Relation of psychosocial and stress reactivity variables to ventricular arrhythmias in the Cardiac Arrhythmia Pilot Study (CAPS). *Am J Cardiol* 1990; 66: 63–67.
15. Whang W, Julien HM, Higginbotham L, et al. Women, but not men, have prolonged QT interval if depressed after an acute coronary syndrome. *Europace* 2012; 14: 267–271.
16. Cannon CP, Battler A, Brindis RG, et al. American College of Cardiology key data elements and definitions for measuring the clinical management and outcomes of patients with acute coronary syndromes. A report of the American College of Cardiology Task Force on Clinical Data Standards (Acute Coronary Syndromes Writing Committee). *J Am Coll Cardiol* 2001; 38: 2114–2130.
17. Majidi M, Kosinski AS, Al-Khatib SM, et al. Reperfusion ventricular arrhythmia ‘bursts’ in TIMI 3 flow restoration with primary angioplasty for anterior ST-elevation myocardial infarction: a more precise definition of reperfusion arrhythmias. *Europace* 2008; 10: 988–997.
18. Cercek B, Lew AS, Laramée P, et al. Time course and characteristics of ventricular arrhythmias after reperfusion in acute myocardial infarction. *Am J Cardiol* 1987; 60: 214–218.
19. Beck AT, Ward CH, Mendelson M, et al. An inventory for measuring depression. *Arch Gen Psychiatry* 1961; 4: 561–571.
20. Lesperance F, Frasure-Smith N, Juneau M, et al. Depression and 1-year prognosis in unstable angina. *Arch Intern Med* 2000; 160: 1354–1360.
21. Whang W, Shimbo D, Kronish IM, et al. Depressive symptoms and all-cause mortality in unstable angina pectoris (from the Coronary Psychosocial Evaluation Studies ^{COPEs}). *Am J Cardiol* 2010; 106: 1104–1107.
22. Rutledge T, Reis SE, Olson M, et al. Depression is associated with cardiac symptoms, mortality risk, and hospitalization among women with suspected coronary disease: the NHLBI-sponsored WISE study. *Psychosom Med* 2006; 68: 217–223.
23. Wang J, Yeo CL and Aguirre A. The design and evaluation of a new multi-lead arrhythmia monitoring algorithm. *Computers in Cardiology* 1999; 26: 675–678.
24. Kleiger RE, Miller JP, Bigger JT Jr, et al. Decreased heart rate variability and its association with increased mortality after acute myocardial infarction. *Am J Cardiol* 1987; 59: 256–262.
25. Risk stratification and survival after myocardial infarction. *N Engl J Med* 1983; 309: 331–336.
26. Lanza GA, Cianflone D, Rebuzzi AG, et al. Prognostic value of ventricular arrhythmias and heart rate variability in patients with unstable angina. *Heart* 2006; 92: 1055–1063.
27. Lepschkin E and Surawicz B. The measurement of the Q-T interval of the electrocardiogram. *Circulation* 1952; 6: 378–388.
28. Eagle KA, Lim MJ, Dabbous OH, et al. A validated prediction model for all forms of acute coronary syndrome: estimating the risk of 6-month postdischarge death in an international registry. *JAMA* 2004; 291: 2727–2733.
29. Watkins LL, Blumenthal JA, Davidson JR, et al. Phobic anxiety, depression, and risk of ventricular arrhythmias in patients with coronary heart disease. *Psychosom Med* 2006; 68: 651–656.
30. Carney RM, Blumenthal JA, Stein PK, et al. Depression, heart rate variability, and acute myocardial infarction. *Circulation* 2001; 104: 2024–2028.
31. Stein PK, Carney RM, Freedland KE, et al. Severe depression is associated with markedly reduced heart rate variability in patients with stable coronary heart disease. *J Psychosom Res* 2000; 48: 493–500.
32. Carney RM, Blumenthal JA, Freedland KE, et al. Low heart rate variability and the effect of depression on post-myocardial infarction mortality. *Arch Intern Med* 2005; 165: 1486–1491.
33. Gehi A, Mangano D, Pipkin S, et al. Depression and heart rate variability in patients with stable coronary heart disease: findings from the Heart and Soul Study. *Arch Gen Psychiatry* 2005; 62: 661–666.
34. Frasure-Smith N, Lesperance F, Irwin MR, et al. The relationships among heart rate variability, inflammatory markers and depression in coronary heart disease patients. *Brain Behav Immun* 2009; 23: 1140–1147.
35. Carney RM, Freedland KE, Stein PK, et al. Effects of depression on QT interval variability after myocardial infarction. *Psychosom Med* 2003; 65: 177–180.
36. Barton DA, Dawood T, Lambert EA, et al. Sympathetic activity in major depressive disorder: identifying those at increased cardiac risk? *J Hypertens* 2007; 25: 2117–2124.
37. Zipes DP, Levy MN, Cobb LA, et al. Sudden cardiac death. Neural-cardiac interactions. *Circulation* 1987; 76: I202–I207.
38. Schwartz PJ, La Rovere MT and Vanoli E. Autonomic nervous system and sudden cardiac death. Experimental basis and clinical observations for post-myocardial infarction risk stratification. *Circulation* 1992; 85: I77–I91.
39. Chen LS, Zhou S, Fishbein MC, et al. New perspectives on the role of autonomic nervous system in the genesis of arrhythmias. *J Cardiovasc Electrophysiol* 2007; 18: 123–127.