



PROJECT MUSE®

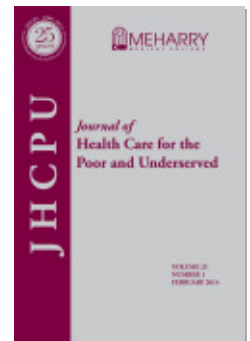
---

## The Problem of Late ART Initiation in Sub-Saharan Africa: A Transient Aspect of Scale-up or a Long-term Phenomenon?

Maria Lahuerta, Frances Ue, Susie Hoffman, Batya Elul, Sarah Gorrell Kulkarni, Yingfeng Wu, Harriet Nuwagaba-Biribonwoha, Robert H. Remien, Wafaa El Sadr, Denis Nash

Journal of Health Care for the Poor and Underserved, Volume 24, Number 1, February 2013, pp. 359-383 (Article)

Published by The Johns Hopkins University Press  
DOI: [10.1353/hpu.2013.0014](https://doi.org/10.1353/hpu.2013.0014)



➔ For additional information about this article  
<http://muse.jhu.edu/journals/hpu/summary/v024/24.1.lahuerta.html>

## The Problem of Late ART Initiation in Sub-Saharan Africa: A Transient Aspect of Scale-up or a Long-term Phenomenon?

Maria Lahuerta, PhD, MPH

Frances Ue, MPH

Susie Hoffman, DrPh

Batya Elul, PhD, MSc

Sarah Gorrell Kulkarni, MPH

Yingfeng Wu, PhD

Harriet Nuwagaba-Biribonwoha, PhD, MBChB

Robert H. Remien, PhD

Wafaa El Sadr, MD, MPH

Denis Nash, PhD, MPH

*Abstract:* Efforts to scale-up HIV care and treatment have been successful at initiating large numbers of patients onto antiretroviral therapy (ART), although persistent challenges remain to optimizing scale-up effectiveness in both resource-rich and resource-limited settings. Among the most important are very high rates of ART initiation in the advanced stages of HIV disease, which in turn drive morbidity, mortality, and onward transmission of HIV. With a focus on sub-Saharan Africa, this review article presents a conceptual framework for a broader discussion of the persistent problem of late ART initiation, including a need for more focus on the upstream precursors (late HIV diagnosis and late enrollment into HIV care) and their determinants. Without additional research and identification of multi-level interventions that successfully promote earlier initiation of ART, the problem of late ART initiation will persist, significantly undermining the long-term impact of HIV care scale-up on reducing mortality and controlling the HIV epidemic.

*Key words:* Late ART initiation, sub-Saharan Africa, scale-up, conceptual framework, retention.

---

**THE AUTHORS** are affiliated with ICAP-Columbia University, Mailman School of Public Health, New York, NY [ML, FU, BE, SGK, YW, HNB, WES]; the Department of Epidemiology, Mailman School of Public Health, Columbia University [ML, SH, BE, WES, DN]; the HIV Center for Clinical and Behavioral Studies, New York, NY [SH, RR, DN]; and Epidemiology and Biostatistics Program, CUNY School of Public Health at Hunter College, New York, NY [DN]. Please address correspondence to Maria Lahuerta, ICAP-Columbia University, Mailman School of Public Health, 722 W. 168th St. 13th floor, New York, NY 10032; (212) 304-7106; ml2842@columbia.edu.

An estimated 34 million people are infected with HIV worldwide, the majority in developing countries.<sup>1</sup> Efforts to scale-up access to HIV care and treatment have been successful at initiating large numbers of patients on antiretroviral therapy (ART). Sub-Saharan Africa is the most affected region, constituting 69% of people living with HIV/AIDS and 70% of HIV/AIDS deaths worldwide.<sup>1</sup> The estimated number of people on ART in the region increased from 100,000 people in 2003 to 8 million by the end of 2011, reaching an estimated 44% of those in need.<sup>1</sup> Despite these successes, there remain persistent challenges to optimizing the effectiveness of HIV care and treatment scale-up in the region. Among the most important of these are very high rates of late ART initiation (i.e., in the advanced stages of HIV disease)<sup>2,3</sup> which in turn drive high rates of mortality soon after initiation of ART (early mortality).<sup>4,5</sup> A three-to-four fold difference in mortality rates is apparent in the first year after ART initiation in resource-limited as compared with resource-rich settings.<sup>6</sup> There are also very high mortality rates prior to ART initiation among people already diagnosed and enrolled in care.<sup>2</sup> Late ART initiation is also associated with a longer infectious period, and earlier ART initiation substantially reduces onward HIV transmission.<sup>7</sup>

The aim of this review is to draw on relevant literature from around the world to examine and discuss the magnitude of the late ART initiation problem in sub-Saharan Africa, including precursors of late ART initiation (late HIV diagnosis and late enrollment into HIV care). We discuss the pathways to late ART initiation, which may in turn be associated with different determinants and interventions, and present a conceptual framework to help guide future discussions and inform studies aimed at identifying determinants and interventions that ultimately increase the effectiveness of HIV care and treatment scale-up.

**International treatment guidelines and definition of late ART initiation.** With few exceptions, national guidelines in the sub-Saharan African region during 2004–2009 specified ART eligibility for patients with CD4+ counts <200 cells/ $\mu$ L.<sup>8</sup> In 2009, the World Health Organization (WHO) revised its guidelines for ART eligibility to start patients on ART earlier: CD4 count  $\leq$ 350 cells/ $\mu$ L (irrespective of WHO stage) and WHO stage 3 or 4 (irrespective of CD4 count).<sup>9</sup> Subsequently, many sub-Saharan African countries have updated their HIV national guidelines to reflect these new recommendations. National guidelines, however, still vary greatly and while they are an important reference point, most patients in sub-Saharan Africa have historically initiated ART at levels well below international and national guidelines that were in effect at the time of ART initiation (e.g., median of 80–212 cells/ $\mu$ L).<sup>10–32</sup>

For the purposes of this review, we broadly define late ART initiation as initiating ART in the advanced stages of HIV infection, irrespective of the reason. We do not put forth an operational definition, given the relative variability across countries and contexts. Rather, we frame our discussion of what constitutes late as being on the low end (e.g., lowest 25% or 10%) of the distribution of CD4 count or clinical stage at ART initiation in a given setting. However, as a reference point, operational definitions used in epidemiologic studies include WHO stage 4<sup>33–35</sup> or CD4  $\leq$ 200 cells/ $\mu$ L<sup>17,33,35–40</sup> to define *late* and CD4 <50 cells/ $\mu$ L to define *very late*.<sup>37–40</sup> In the past years, some attempts have been made to create consensus on these definitions,<sup>41–43</sup> but given that international guidelines tend to evolve and CD4 count at ART initiation is not universally available

among HIV patients in sub-Saharan Africa, it is advisable to use both CD4 and clinical stage information when operationally defining late ART initiation.

## Methods

We conducted a literature review to identify the extent to which studies had been published on the magnitude of the late ART initiation problem, its precursors (late HIV diagnosis and late enrollment into HIV care) and their determinants in sub-Saharan Africa. English-language, peer-reviewed publications from 2005 to 2011 were searched in PubMed, using the terms (late OR delay) AND antiretroviral AND initiation. Additional articles were identified from references in published papers and abstracts from major international AIDS conferences. The PubMed search yielded 148 articles. We only included reports of observational ART cohorts in sub-Saharan Africa reporting CD4+ cell count and/or WHO/CDC clinical staging. We excluded data from controlled clinical trials and from special populations, such as female sex workers and intravenous drug users, as the findings are likely not generalizable to all people with HIV. Table 1 presents results from 27 studies from 18 African countries reporting the median CD4 and/ or clinical staging at HIV diagnosis, enrollment into care, and ART initiation among patients enrolled in care and treatment between 1998 and 2009, as well as the definition and proportion considered late when available.

## Results

**The magnitude of the late ART initiation problem in sub-Saharan Africa.** Despite more expansive guidelines for ART eligibility, most patients in sub-Saharan Africa initiate ART at very low CD4 counts,<sup>2,6,10,12,13,19,21,22,27,28,44,45</sup> with substantial variability in the CD4 count at ART initiation across sites and settings.<sup>8,28</sup> We observed a range of median CD4 counts from 87 to 212 cells/ $\mu$ L at ART initiation (Table 1) in our review of the published literature in sub-Saharan Africa from 2005 to 2011. Table 1 also notes median CD4 count at the key milestones on the pathways towards ART initiation (HIV diagnosis and enrollment into care). In an analysis from the ART-LINC collaboration, which included 36,715 patients from 17 centers in 12 low-income countries, the median CD4 count at ART initiation was 122 cells/ $\mu$ L (IQR 53-194) among the sub-Saharan African patients.<sup>19,28</sup> Some of the most recent publications on scale-up programs for which CD4 and stage information are available suggest that, while the median CD4 count at ART initiation is increasing, they remain quite low among sub-Saharan African ART patients.<sup>19,27,28</sup> For example, one recent analysis of 121,504 patients initiating ART from 267 clinics in eight sub-Saharan African countries found that the median CD4 cell count at ART initiation increased modestly from 115 to 143 cells/ $\mu$ L during 2004–2008.<sup>28</sup>

The very low CD4 counts at which populations in sub-Saharan Africa are initiating ART reflects, among other things, the emergency nature of HIV scale-up in the region,<sup>46</sup> treatment prioritization of the sickest individuals, and absorptive capacity of the health care system to meet the overwhelming demand for treatment through scale-up and decentralization. However, once past the initial emergency phase, as ART coverage and

**Table 1.**

**MAGNITUDE OF THE LATE ART INITIATION PROBLEM IN SUB-SAHARAN AFRICA, 2005-2011**

	Author, year	Country	N	Females	Median (IQR) CD4 cell count (cells/ $\mu$ L) <sup>ab</sup>	Proportion with advanced clinical staging (WHO 4 or CDC C) <sup>a</sup>	Year(s) of ART initiation	Definition <sup>a</sup>	Proportion delayed <sup>a</sup>
Delayed Diagnosis	Forbi et al., 2010	Nigeria	588	314 (53.4%)	—	—	—	Advanced immunosup.: 130 (22.1%) advanced immunosup.; 200–349 cells/ $\mu$ L; Severe immunosup.: 292 (49.7%) severe immunosup. <200 cells/ $\mu$ L.	
	Okome-Nkoumou et al., 2005	Gabon	150	94 (62.7%)	242 (102–394)	28.0% CDC C	—	> 124 days between first HIV-related symptoms and HIV diagnosis 66 (44.0%)	
Delayed Enrollment into Care	Pati et al., 2011	Mozambique	37,352	—	452 (345–611)	—	—	—	
	Ingle et al., 2010	South Africa	44,844	29,898 (66.7%)	170 (76–318) 26.0% missing	—	—	—	
	Kranzer et al., 2010	South Africa	885	622 (70.3%)	—	—	—	>6 months between HIV diagnosis and CD4 testing 331 (37.4%)	
	Larson et al., 2010	South Africa	352	235 (66.8%)	184.5 (67.5–353.5)	—	—	> 12 weeks between HIV diagnosis and CD4 testing 230 (65.3%)	
Delayed ART Initiation	Kigozi et al., 2009	Uganda	2,311	1,487 (64.3%)	—	5.1% WHO 4	—	WHO Stage 3 or 4 928 (40.2%)	
	Marcellin et al., 2009	Cameroon	3,151	2,239 (71%)	336 (208–448)	—	—	$\geq$ 6 months between HIV diagnosis and 1st HIV consultation 477 (15%)	
Delayed ART Initiation	Bassett et al., 2010	South Africa	1,474	—	159 (65–299)	—	2006–2008	—	
	Boulle et al., 2010	South Africa	7,323	4,961 (67.7%)	101 (45–164)	35.5% WHO 4	2001–2007	—	
	Charurat et al., 2010	Nigeria	5,760	3,375 (58.6%)	121 19.6% missing	—	2005–2006	—	

(Continued on p. 363)

**Table 1. (continued)**

	Author, year	Country	N	Females	Median (IQR) CD4 cell count (cells/ $\mu$ L) <sup>ab</sup>	Proportion with advanced clinical staging (WHO 4 or CDC C) <sup>a</sup>	Year(s) of ART Initiation	Definition <sup>a</sup>	Proportion delayed <sup>a</sup>
Delayed ART Initiation (continued)	De Beaudrap et al., 2010	Senegal	404	221 (54.7%)	128 (54–217) 2.2% missing	55.5% CDC C	1998–2008	—	—
	Ekouevi et al., 2010	Benin, Cote d'Ivoire, Gambia, Mali, Senegal	14,352	8,810 (61.4%)	131 (48–221) 14.8% missing	28.9% CDC C or WHO 3/4	<2004–2008	—	—
	Ford et al., 2010	Lesotho	1,177	801 (66.7%)	212 (120–285) 4.2% missing	—	2008–2009	CD4 $\leq$ 200 cells/ $\mu$ L	538 (45.7%)
	Bassett et al., 2009	South Africa	501	281 (56.0%)	96 (39–158)	—	2006	—	—
	Lahuerta et al., 2012	Mozambique	36,411	22,680 (62.2%)	150 (72–219) 24% missing	13% WHO 4	2005–2009	CD4 <100 cells/ $\mu$ L or WHO Stage 4	14,010 (38%)
	Lahuerta et al., 2011	Mozambique	51,269	32,200 (62.8%)	144 (69–221)	14% WHO 4	2004–2009	—	—
	Lawn et al., 2009	South Africa	2,423	1624 (67.0%)	101 (48–157)	23.0% WHO 4	2002–2007	—	—
	Lowrance et al., 2009	Rwanda	3,194	2071 (64.8%)	141 (80–199.5)	—	2004–2005	—	—
	MacPherson et al., 2009	South Africa	1353	907 (67.0%)	93 (37–148)	—	2005–2007	—	—
	Rougmont et al., 2009	Cameroon	312	198 (63.5%)	104 (50–177) 4.2% missing	14.1% CDC C	2006	—	—
	Sanne et al., 2009	South Africa	7536	5,011 (66.5%)	87 (31–158) 8.5% missing	—	2004–2007	—	—
	Sieleunou et al., 2009	Cameroon	1187	527 (44.4%)	105 (40–173) 10.6% missing	90.4% WHO 3/4	2001–2006	—	—

(Continued on p. 364)

**Table 1. (continued)**

Author, year	Country	N	Females	Median (IQR) CD4 cell count (cells/ $\mu$ L) <sup>ab</sup>	Proportion with advanced clinical staging (WHO 4 or CDC C) <sup>a</sup>	Year(s) of ART initiation	Definition <sup>a</sup>	Proportion delayed <sup>a</sup>
Delayed ART Initiation (continued)	Fairall et al., 2008	14,267	9,320 (65.3%)	—	3.6% WHO 4	2004–2005	—	—
	Keiser et al., 2008	30,056	19,571 (65.1%)	111 (45–184)	56.5% CDC C or WHO 3/4	2001–2006	—	—
Nash et al., 2011	South Africa	16,170	10,895 (67.4%)	—	—	2005–2008	—	—
	Ethiopia	—	—	122.0 (133.5, 125.0)	—	2006–2008	—	—
	Kenya	—	—	105.0 (102.0, 108.0)	—	2006–2008	—	—
	Lesotho	—	—	107.5 (105.3, 122.5)	—	2005–2008	—	—
	Mozambique	—	—	149.5 (140.5, 154.8)	—	2005–2008	—	—
	Nigeria	—	—	153.0 (130.3, 158)	—	2005–2008	—	—
	Rwanda	—	—	178.3 (162.4, 195.5)	—	2005–2008	—	—
	South Africa	—	—	117.5 (116, 118.3)	—	2005–2008	—	—
	Tanzania	—	—	116.5 (100.0, 125.8)	—	2005–2008	—	—
	Zambia	16,198	9,864 (60.9%)	Mean CD4 (SD): 143 (123)	11.6% WHO 4	2004–2005	—	—

<sup>a</sup>CD4+ cell count, WHO/CDC (World Health Organization/Centers for Disease Control and Prevention) Stage, definition, and proportion delayed correspond to the time of diagnosis, enrollment into care, or Antiretroviral Therapy (ART) initiation as specified.

<sup>b</sup>When available, proportion missing a CD4 cell count is also noted. IQR = Interquartile Range

absorptive capacity reach a steady state equilibrium, an important question is whether the late ART problem will persist and whether there are structural interventions at the population and clinic-levels that could promote the earlier initiation of ART among people with HIV, such that the individual and population-level effectiveness of HIV treatment scale-up can be further optimized.

**The consequences of late ART initiation.** A recent randomized control trial from Haiti showed a four-fold higher risk among those for whom ART initiation was delayed until after CD4 counts dropped below 200 cells/ $\mu$ L compared with those who started with CD4 counts between 200–350 cells/ $\mu$ L.<sup>35</sup> Late ART initiation translates into substantial early mortality after the initiation of ART. Low CD4 count and advanced stage of disease are the most important predictors of clinical progression and poor survival after ART initiation,<sup>2,17,27,47–52</sup> and these were a factor in nearly all deaths through the first year after ART initiation in one South African study.<sup>2</sup> A large review article of early mortality following ART initiation by Lawn et al.<sup>4</sup> found that 8 to 26% of patients initiating ART died within one year, with most dying in the first few months after ART initiation often with tuberculosis (TB) related complications.<sup>53,54</sup> The range in median CD4 counts at ART initiation across the clinics was 43–147 cells/ $\mu$ L.<sup>4,53,54</sup> Another landmark study compared mortality rates in the two years following ART initiation among people initiating ART in four sub-Saharan African countries to non-HIV-related mortality rates in the general population, observing 20–50 times higher mortality among patients who initiated with CD4 <100 cells/ $\mu$ L and WHO stage 4 than in the general population.<sup>5</sup> The authors conclude that much of the excess mortality could be prevented by timely ART initiation. Finally, another study found that 50% of the excess in death rates in the first two years after ART initiation among patients treated in Uganda over those treated in London was due to late ART initiation, even after accounting for serious opportunistic infections.<sup>55</sup>

Patients who initiate ART at low CD4 count remain at risk for opportunistic infections for a substantially longer period than patients starting ART at higher CD4 counts,<sup>53</sup> increasing their risk for serious morbidity and death, with TB being the most common opportunistic illness.<sup>8,53</sup> While information on underlying causes of death among people on ART is lacking in sub-Saharan Africa, one study found 86% of deaths in the first year following ART initiation to be HIV-related (CNS infections, TB, Kaposi's sarcoma, pneumonia, and mitochondrial toxicity), with 7% due to immune reconstitution syndrome.<sup>56</sup>

Early mortality in patients who initiate ART is an extension of very high mortality rates in ART-eligible patients who are enrolled in care but have not initiated ART. Importantly, we note that only a handful of studies, all from South Africa, have reported on patient outcomes prior to ART initiation,<sup>2,11,18,57</sup> all of which found the mortality rates to be very high (e.g., 36 deaths per 100 person-years). In fact, deaths among pre-ART patients accounted for 66% of deaths (Cape Town)<sup>2</sup> and 87% of deaths (Free State)<sup>16</sup> in the entire clinic population. This in turn underscores the need for more research on patients at the time of enrollment and in the care phase prior to ART initiation.

*Population-level consequences.* Recent clinical trial data (HPTN 052) demonstrated that earlier initiation of ART results in near complete interruption of HIV transmission, with a 96% reduction in HIV transmission in serodiscordant couples.<sup>7</sup> It is estimated



that around two to three new infections occur for every one person placed on ART,<sup>58</sup> and it has long been known that late stage HIV infection is associated with higher rates of HIV transmission due to elevated viral load levels.<sup>59,60</sup> A study with serodiscordant couples from a cohort in Rakai, Uganda, estimated that the probability of HIV transmission during late-stage infection increases by four to eight times during the two years before death.<sup>61,62</sup> Hence, earlier diagnosis, enrollment into HIV care, and more timely ART initiation can prevent onward HIV transmission,<sup>63–66</sup> both by reducing an individual’s infectiousness through ART and by promoting safer sexual behaviors.

**Pathways to late ART initiation.** We have delineated four distinct pathways to ART initiation (Figure 1), and key milestones along these pathways: HIV diagnosis and enrollment into care. Pathways A, B and C all converge on late ART initiation, but through different mechanisms. Pathway D (timely diagnosis → timely enrollment into care → timely ART initiation) is the optimal scenario, with ‘timely’ meant to imply prior to the onset of advanced stages of HIV disease. While all of these pathways are operating to some degree or another in a given clinic or context, they are very different with respect to their determinants and therefore the types of interventions to be identified and implemented. Further, the relative contribution of each Pathway (A–C) to the overall burden of late ART initiation in sub-Saharan Africa is not well understood.

*Late diagnosis of HIV/AIDS (Pathway A).* Late diagnosis (defined as low CD4 count or advanced clinical stage [e.g., AIDS-defining illness]) is an extremely common and

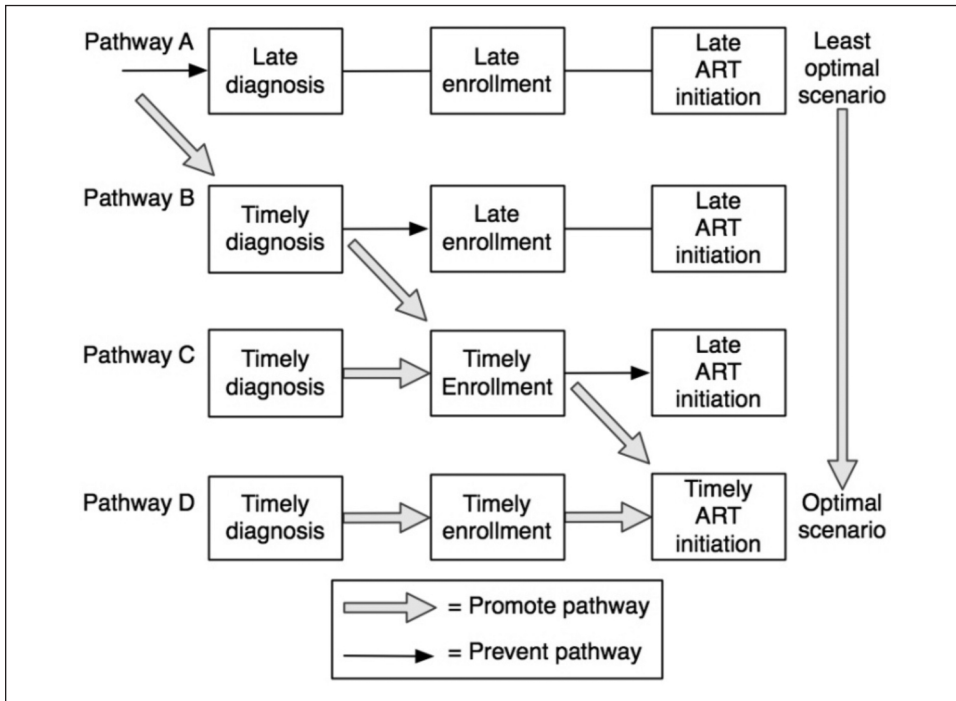


Figure 1. Pathways to and points of intervention to promote timely Antiretroviral Therapy (ART) initiation.

persistent problem in both resource-rich<sup>33,34,40,67–75</sup> and resource-limited settings.<sup>29,38,76–81</sup> In sub-Saharan Africa, HIV testing uptake is variable, but generally low throughout the region; only 4–27% of adults report receiving an HIV test and receiving the results in the past 12 months,<sup>82</sup> despite the increasing availability of testing opportunities and ART. This suggests that late diagnosis is a major contributing factor to late ART initiation in the region. In a study conducted in Nigeria, for example, 50% of HIV-infected individuals had CD4 <200 cells/ $\mu$ L at HIV diagnosis.<sup>81</sup> Similarly, in a peri-urban community near Cape Town, South Africa, 36% of HIV-infected individuals had CD4 <200 cells/ $\mu$ L and 31% presented HIV-related symptoms (WHO stage 3/4) at the time of diagnosis.<sup>83</sup> Furthermore, and despite the increase in the annual population HIV testing rates in this community from 4% in 2001 to 20% in 2006, the proportion that was diagnosed late did not change with time. While many studies in sub-Saharan Africa have described CD4 count and stage *at ART initiation*, the scarcity of data on CD4 count and stage *at diagnosis* makes it difficult to quantify the contribution of late diagnosis to the problem of late ART initiation relative to the other pathways in Figure 1. However, these data suggest that late diagnosis is a major contributor to late ART initiation in the sub-Saharan African region.

*Late enrollment in care (Pathway B).* Little is known about the factors associated with delayed or late enrollment in HIV care among diagnosed HIV-positive people. In a study evaluating linkages to care in Cape Town, South Africa, 63% of individuals had a CD4 cell count measurement indicative of care linkage within six months of testing HIV positive, with those testing at sexually transmitted infection services having the highest likelihood (84%) and those testing in VCT services having the lowest likelihood (54%) of linkage to HIV care.<sup>20</sup> An analysis of a national cross-sectional cohort of Cameroonian HIV-positive adults (ANRS-EVAL study) observed that 30% of participants reported delays of three months and 15% waited more than six months before enrolling in care.<sup>84</sup> A Ugandan study of newly diagnosed HIV-positive adults who enrolled in HIV care found that 40% had advanced AIDS-defining disease (WHO Stage 3 or 4).<sup>79</sup> Finally, a recent case-control study in Ethiopia observed that HIV-positive adults who lived with their families, lived in a rented house, perceived many ART side effects or HIV-related stigma, tested with sickness/symptoms, did not disclose their HIV status to their partner, or had frequent alcohol use were more likely to enroll in care late.<sup>85</sup>

*Late ART initiation despite early enrollment into care (Pathway C).* Although late ART initiation remains a pervasive problem in sub-Saharan Africa, there are very few published data on outcomes following early enrollment into care. Perhaps one of the most important reasons why some people may initiate ART late, despite having enrolled into HIV care early, is the prioritization of sicker patients for ART initiation, and that clinics are often overburdened and lack the absorptive capacity to treat anyone but the sickest of the sick.<sup>86,87</sup> While this phenomenon may improve with time as the sickest patients are treated, as ART coverage increases, and as HIV services are decentralized to primary health centers, it may also persist if the sickest patients cannot be treated quickly enough.

Despite the limited data available, death prior to ART initiation remains a major concern.<sup>4,11,88</sup> Poor retention,<sup>11,89,90</sup> waiting lists,<sup>91,92</sup> lengthy or onerous ART eligibility procedures,<sup>11</sup> lack of integrated TB diagnosis and disease management,<sup>93</sup> ARV

stock-outs,<sup>39</sup> and inadequate immunologic and clinical monitoring<sup>11</sup> have all been documented and are potentially important contributing factors to late ART initiation. However, the degree to which each of these factors may contribute to the overall burden of late ART initiation at the individual or clinic-levels, and the extent to which they can be addressed, has not been described.

A large proportion of patients enrolled in HIV care in sub-Saharan Africa (perhaps 40–50%<sup>10,21,94</sup>) have not been determined to be ART-eligible and have not yet initiated ART; among these individuals, even less is known about the magnitude and determinants of non-retention in care and regular clinical and immunological monitoring to help ensure timely ART initiation and OI prophylaxis. A systematic review of pre-ART retention in care in Africa suggests that less than one-third of patients testing positive for HIV and not yet eligible for ART when diagnosed are retained continuously in care.<sup>95</sup> Among HIV-infected individuals not yet eligible for ART in a rural area of South Africa, overall retention was only 45% and younger patients and those at earlier stages of the infection had lower odds of being retained, increasing the likelihood that these patients will only return for treatment once they develop clinical symptoms, a sign of advanced HIV disease.<sup>57</sup> The WHO-recommended expansion of ART eligibility guidelines in resource-limited settings further highlighted the problem of retention because newly eligible patients could not be located.<sup>96</sup> Indeed, the fact that most published studies on outcomes in HIV care programs have focused primarily on outcomes after ART initiation makes it difficult to infer or draw conclusions about outcomes prior to ART initiation.<sup>42</sup>

In summary, for each of the pathways to late ART initiation there are likely structural and systemic solutions to some of the problems mentioned above that could increase the likelihood of earlier ART initiation among the patient population at many clinics, as well as that of future patients in their catchment areas. There is great concern regarding the diminishing proportion of people who test HIV positive that are retained along the cascade from HIV diagnosis to ART treatment initiation.<sup>95</sup> Box 1 summarizes several potentially promising strategies that could reduce the problem of late ART initiation at different milestones. In the next section, we provide a conceptual framework for and review the literature on the determinants of late ART initiation.

**Conceptual framework for determinants of late ART initiation.** The determinants of late ART initiation likely operate at multiple levels. To help delineate these determinants we have developed a conceptual framework for late ART initiation (Figure 2) drawing upon the Behavioral Model of Health Services Use,<sup>97–99</sup> which has been used extensively and adapted to understand the factors that predict use (or non-use) of medical care services.<sup>100,101</sup> Elements of this model include predisposing factors, described as pre-existing characteristics of individuals such as age and gender; enabling factors, which can include health system factors (e.g., cost of care), as well as individual, family and community resources that support or constrain use of care; and need for care, described as the individual's perception of need. The framework includes factors measured at the contextual (nationwide or sub-national), clinic, and individual levels, which are hypothesized to influence late ART initiation and the relative timing of one or more of the upstream milestones on the pathway to late ART initiation—diagnosis and enrollment into HIV care.

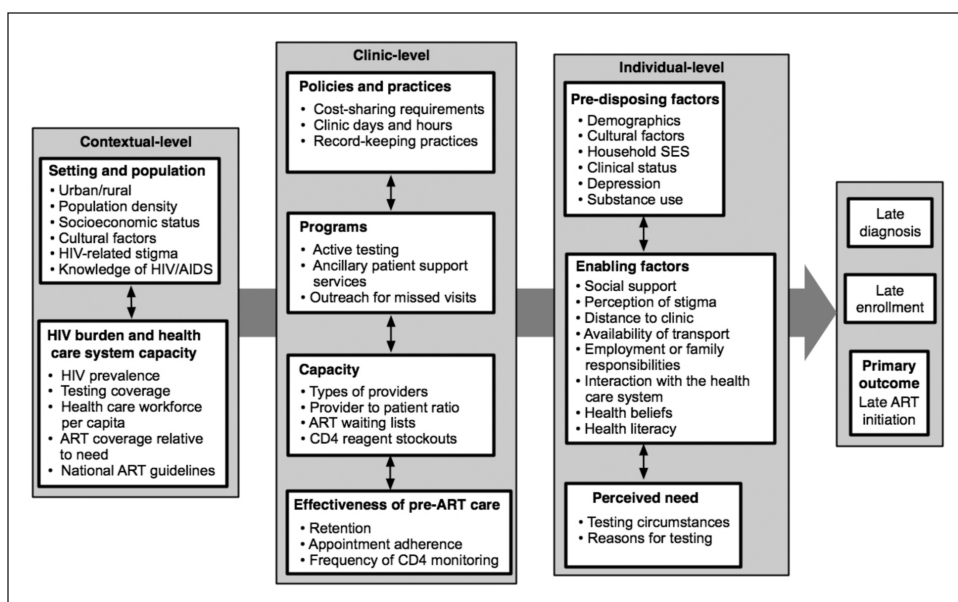


Figure 2. Multi-level factors associated with late HIV diagnosis, late enrollment into care, and late Antiretroviral Therapy (ART) initiation.

*Contextual-level factors.* Contextual factors include characteristics of the setting and population where the HIV epidemic is occurring (e.g., urban/rural, population density, socioeconomic status, levels of stigma and HIV knowledge), as well as, indicators of HIV burden and health care system capacity (e.g., HIV prevalence, percent of population tested for HIV, health care workforce *per capita*, ART coverage relative to need, and national treatment guidelines).

Characteristics of the setting and general population. HIV-related stigma, routinely measured as part of Demographic and Health Surveys (DHS) in sub-Saharan Africa,<sup>82</sup> continues to be pervasive. Anticipated stigma from the community or perceived discrimination in the health care system is likely to inhibit care-seeking,<sup>102,103</sup> but only a few studies in sub-Saharan Africa have focused on how stigma influences the decision to seek testing or medical care.<sup>39,104</sup> Qualitative studies in Tanzania, Ethiopia, and Zambia found that perceived stigma was a barrier to seeking treatment for infections closely associated with HIV,<sup>105,106</sup> and in Botswana, stigma was associated with ART adherence difficulties.<sup>107</sup> A qualitative study in Uganda observed that perceived stigma and misconceptions about ARVs contributed to delays in ART initiation,<sup>39</sup> however, whether and to what extent population-level stigma influences HIV-related health-seeking behaviors among HIV positive people (e.g., testing, enrollment, and ART initiation) has not been extensively examined in sub-Saharan Africa.

The type of community (urban *vs.* rural) can also be a factor, since differences exist in community characteristics in terms of density of population, distance to and availability of clinics and hospitals and infrastructure within clinics (e.g., availability of CD4 testing).<sup>22,28</sup> A study by Ingle et al. in South Africa observed that patients in rural

clinics had lower rates of starting ART treatment and higher mortality than patients in urban/peri-urban clinics,<sup>18</sup> but more studies evaluating this association in different contexts are needed. DHS data,<sup>82,108</sup> as a source of contextual information, linked with contemporaneous routinely collected HIV program outcome data<sup>110</sup> may be particularly useful to this end. For example, one recent study found that higher levels of HIV testing coverage and AIDS knowledge were associated with a lower likelihood of late ART initiation among populations of people initiating ART.<sup>28</sup>

**National HIV burden and health care system capacity.** The health care worker shortage in the sub-Saharan African region is well-documented,<sup>109,110</sup> and concerns about meeting the demands of scale-up have been raised.<sup>111</sup> The capacity of the health care system to respond to the burden of HIV in a community, district or catchment area are also likely to have important influences on the timing at which individuals reach each of the key milestones in pathways to ART initiation (Figure 1). In one large study, provider to patient ratio was associated with a lower median CD4 count among cohorts of patients initiating ART in 8 sub-Saharan African countries.<sup>28</sup> In a cohort of HIV-infected children in South Africa, insufficient human resources in the clinics was noted as the second most common reason for delays in ART initiation.<sup>103</sup> Finally, national HIV care and treatment guidelines that specify the CD4 count and clinical stage at which patients are considered eligible for ART vary somewhat from country to country and likely influence the timing of ART initiation among populations of individuals enrolled in care.

**Clinic-level factors.** Clinic factors including clinic policies and practices, programs (e.g., ancillary services), capacity, and pre-ART care effectiveness likely have a direct impact on each of the milestones on the pathway to late ART initiation. There may be strategies that clinics can adopt to promote timely ART initiation among their existing and future patients, some of which could represent effective and scalable intervention strategies.<sup>28,72</sup>

**Clinic policies and practices.** Clinical policies, such as the number of clinic days and clinic hours, have not been examined in detail but substantial variability exists and it is possible that limited clinic days and hours could hinder enrollment, retention, and appointment adherence for some patients.<sup>68,111</sup> Certain record-keeping practices, such as keeping appointment books and attendance registers, are associated with improved appointment adherence and more timely outreach for patients who miss visits.<sup>28,112</sup>

**Costs of care attendance.** It has been shown that those receiving ART in clinics providing it free of charge have significantly lower mortality than patients from clinics where a fee is charged,<sup>6</sup> although others have shown that free care is not enough, especially for vulnerable populations.<sup>113</sup> Cost of transportation to the clinic can also pose substantial practical barriers to keeping clinic appointments, especially since it is a recurrent cost.<sup>114</sup> Furthermore, to avoid being seen by neighbors or recognized by clinic staff, some patients may enroll in care at a clinic farther from their home,<sup>115,116</sup> exacerbating the problem of transport.

**Programmatic approaches.** Programmatic approaches used by clinics—including active testing and the provision of ancillary patient support services such as adherence support, peer education, and outreach for patients who miss clinic visits—may have direct effects on patient behaviors and are feasible to implement and sustain in sub-

Saharan Africa, as they are already being widely implemented in sub-Saharan African settings.<sup>28</sup> Outreach programs have proven to be effective at returning patients who were lost to follow-up to care in several studies, and could therefore have a positive effect in reducing the proportion initiating ART late.<sup>117-120</sup> Cohorts of patients initiating ART at clinics that provide care adherence support services targeted at pre-ART patients have been shown to be less likely to have low median CD4 count at ART initiation.<sup>28</sup>

**Clinic capacity and effectiveness of pre-ART clinical care.** The type and number of staff providing HIV care (e.g., physicians, nurses, clinical officers) and the provider-to-patient ratio are also potentially important clinic-level factors. For example, in a study conducted in South Africa, patients at clinics with a lower staff-to-patient ratios had lower rates of starting ART treatment than those with higher staff-to-patient ratios.<sup>18</sup> Another study of cohorts of patients initiating ART in eight sub-Saharan African countries found lower provider to patient ratio to be associated with a lower median cohort CD4 count at ART initiation.<sup>28</sup> Similarly, heavy workloads and long waiting times at the clinic could also impact the care received by pre-ART patients and reduce the frequency of visits, which would consequently affect the determination of ART eligibility, as well as retention in pre-ART care. In fact, waiting times have been reported in several studies as one of the major challenges that patients face for appointment adherence.<sup>114,121,122</sup>

**Individual-level factors.** Individual factors, beyond clinical parameters, may have a major impact on timely ART initiation. We have grouped these into predisposing factors, enablers/barriers, and perceived need among HIV infected people.

**Predisposing factors.** Pre-existing characteristics of individuals such as demographics, socioeconomic status, mental disorders or substance abuse might also affect the timing of each milestone along the path to ART initiation. For example, on average, women initiate ART at an earlier stage of HIV disease than men.<sup>27,123</sup> The reasons likely include that women have more regular contact with the health care system and associated opportunities for HIV testing, especially *via* antenatal care, or holding different health-related beliefs. Additionally, both individual and household socioeconomic status may predispose individuals to delay care-seeking or to default from care, most notably through the competing demands and opportunity costs of care. In a study conducted in Uganda, financial constraints were found to be a reason for delay in ART initiation.<sup>124</sup> Competing work- or home-life demands (such as the inability to take time off from work or leave a child or elderly person at home) would likely also play a role in delaying care. In a study looking at loss to follow-up among pre-ART patients in South Africa, patients who were unemployed were nearly twice as likely to be lost from care before ART initiation as those employed.<sup>11</sup> Finally, in areas with highly mobile populations, relocation was also reported as a reason for non-retention.<sup>125</sup>

**Enablers/barriers.** These include parts of an individual's health-related knowledge/beliefs, social environment as well as characteristics of the health care system—as perceived by or engaged with by the patient—that could support or hinder timely care-seeking.

**Treatment-related knowledge.** Individuals with higher levels of HIV-related “health literacy,” or knowledge concerning HIV disease (the importance of CD4 monitoring and ART regimens) may be less likely to initiate ART late and this can be influenced by clinic level factors such as peer education programs.<sup>126</sup>

*Health beliefs, norms, and self-efficacy related to care-seeking.* As health beliefs have been shown to be important predictors of ART adherence,<sup>127–129</sup> they may also be associated with timely enrollment and retention in care. Given the gender differences in late ART initiation that have been observed in sub-Saharan Africa,<sup>27,123</sup> and gender differences in internalized HIV-related stigma,<sup>130</sup> there is a need to enhance our understanding of gender-related beliefs around care-seeking for HIV symptoms.

*Characteristics of the social environment.* Well documented in the literature is that family and social support are associated with better psychological adjustment, medication adherence, and slower progression to AIDS.<sup>131–134</sup> In particular, social network members may facilitate behavioral change by transmitting beliefs and motivations concerning treatment to the patient.<sup>136</sup> Network support may also result in increased logistical support and/or an emboldened sense of moral support.<sup>136,137</sup> Social support may be particularly relevant to timely ART initiation because policies in many sub-Saharan countries require a patient to have someone who might be called a *treatment supporter* before being initiated on ART. Therefore, individuals with limited networks, or those who are unwilling or unable to disclose, may delay enrolling in or may drop out of care. Anticipated stigma appears to be a barrier to HIV testing<sup>138–139</sup> and may also be a barrier to enrolling in care once tested, and experienced stigma might be related to dropping out of care.

*Perceived need.* An individual's perception of need is an important determinant of their decision to use care. It is likely that people seek testing because they believe they may be infected and those who are also symptomatic will be more likely to enroll promptly in care. One South African study showed that being referred for testing by a provider was associated with a lower likelihood of linking to long-term HIV care compared with patients who made their own decision to test.<sup>140</sup>

## Conclusions

In summary, the published literature points squarely to late ART initiation as a major contributor to the problem of early mortality and morbidity following ART initiation in sub-Saharan Africa, which threatens to substantially limit the effectiveness of HIV care and treatment scale-up in the region, including its direct effect on individuals with HIV<sup>35</sup> and its indirect effect on HIV incidence.<sup>7</sup> The considerable variability in late ART initiation across clinics and settings<sup>8,28</sup> and its persistence over time points to the complex and multi-level nature of the problem. While several studies from sub-Saharan Africa have documented low median CD4 count at ART initiation, surprisingly little is known about the multi-level (i.e., individual, clinic, and contextual) determinants of late ART initiation.<sup>28</sup> Importantly, very few studies have examined factors relevant to important and distinct upstream milestones along the pathway to ART initiation—HIV diagnosis and enrollment into HIV care. Although many different strategies to reduce late ART initiation are being utilized across sites and settings in sub-Saharan Africa, more evidence is needed on their relative effectiveness and cost-effectiveness. In particular, more research is needed to identify the structural determinants that may be amenable to intervention. Future research should focus on strategies to diagnose, engage, retain, and monitor current and future patients, and this will likely only be

accomplished through structural interventions at the societal, policy, and clinic-levels. Some strategies to consider that could potentially contribute to reducing late ART initiation in sub-Saharan Africa are listed in Box 1.

In the U.S.<sup>142</sup> and in New York City,<sup>143</sup> the epicenter for HIV in the U.S., HIV treatment has been widely available for more than 15 years. Yet, approximately 26% of people diagnosed with HIV have concomitant diagnosis of AIDS at the time of HIV diagnosis, and delayed access to HIV care after HIV diagnosis is common.<sup>144-147</sup> For example, a recent study in NYC showed that nearly 20% of newly diagnosed individuals had not yet enrolled in HIV care one year later,<sup>148</sup> and this figure may be as high as 30%–40%

### **Box 1.**

#### **STRATEGIES THAT COULD POTENTIALLY CONTRIBUTE TO REDUCING LATE ART INITIATION IN SUB-SAHARAN AFRICA**

Promote early HIV diagnosis	<ul style="list-style-type: none"> <li>Expand provider-initiated counseling and testing</li> <li>Offer mobile, home-based or work-based services for HIV counseling and testing</li> <li>Implement partner-testing services as well as active-testing approaches</li> <li>Increase HIV/AIDS knowledge to reduce community stigma</li> <li>Advertise ART availability to contribute to further expansion of testing</li> </ul>
Improve linkage to care for timely enrollment into care	<ul style="list-style-type: none"> <li>Optimize and simplify the referral process across services (e.g., reduce the number of return visits newly-diagnosed people need to make before becoming enrolled in a care and treatment site)</li> <li>Provide peer supporters to escort and provide emotional support to newly-diagnosed individuals through the linkage-to-care process.</li> <li>Use SMS or other reminder systems to follow-up individuals who test positive but are not known to have not enrolled in HIV care within 30 days</li> <li>Implement information systems to be able to track patients across sites</li> </ul>
Reduce late Antiretroviral Therapy (ART) initiation	<ul style="list-style-type: none"> <li>Implement point-of-care CD4 testing to allow for faster determination of ART eligibility</li> <li>Increase retention of pre-ART patients by improving support services such as peer educator programs, nutritional support, and transport assistance</li> <li>Shorten programmatic delay from CD4 testing to ART initiation (e.g., by streamlining clinical and non-clinical aspects of the eligibility determination process)</li> </ul>

*(Continued on p. 374)*



**Box 1. (continued)**

Operations research	<p>Use a systematic approach to track and detect bottlenecks in the HIV care process from HIV diagnosis to treatment and follow-up. Investigate upstream determinants beyond the individual-level.</p> <p>Capitalize on significant existing aggregate-level data collected as part of routinely service delivery or ministry/donor reporting as well as DHS data to generate hypotheses regarding the association between promising program and contextual level factors and early diagnosis, enrollment into care and ART initiation.</p> <p>Collect data to examine the influence of promising clinic/program-level factors that are already being used or will soon be rolled out by many clinics (e.g., outreach or point of care CD4 testing) to assess their relationship to the outcomes of CD4 at enrollment to care and CD4 count at ART initiation at the individual and aggregate levels.</p>
---------------------	---

SMS = Short Message Service, text message  
DHS = Demographic and Health Survey  
HIV = Human Immunodeficiency Virus  
ART = Antiretroviral Therapy

nationwide.<sup>70,144,149</sup> Thus, in sub-Saharan Africa, a major concern is that the problem of late ART initiation will reach a sub-optimal steady state similar to the United States, where, despite substantial investment and near universal availability of HIV-related services, an unprecedented number of people living with HIV (including undiagnosed HIV<sup>150</sup>) and several important service and programmatic gaps<sup>151</sup> continue to drive HIV incidence, and HIV-related morbidity and mortality at the population-level.<sup>152,153,154</sup> Given that millions of Africans will be initiating ART in the coming decade, the number of lives potentially saved, directly and indirectly, by reducing late ART initiation would be substantial over the long term.<sup>155</sup> Very recent data indicating that Rwanda has the second highest mean CD4 count at ART initiation in the world (after the U.S.) are very encouraging and provide hope for the entire region.<sup>156</sup> However, the threat of decreased international commitment to HIV/AIDS in sub-Saharan Africa associated with the global financial crisis, combined with persistently low testing coverage, low rates of linkage to care after HIV diagnosis, and poor retention in HIV care after enrollment and ART initiation all have the potential to perpetuate the problem of late ART initiation, and severely limit the full future potential of HIV scale-up in the region.

**Acknowledgments**

We want to thank Elvin Geng for reviewing this manuscript and providing insightful comments.

## Notes

1. UNAIDS. UNAIDS report on the global AIDS epidemic 2012. Geneva, Switzerland: UNAIDS, 2012.
2. Lawn SD, Myer L, Orrell C, et al. Early mortality among adults accessing a community-based antiretroviral service in South Africa: implications for programme design. *AIDS*. 2005 Dec 2;19(18):2141–8.
3. Colebunders R, Ronald A, Katabira E, et al. Rolling out antiretrovirals in Africa: there are still challenges ahead. *Clin Infect Dis*. 2005 Aug 1;41(3):386–9. Epub 2005 Jun 30.
4. Lawn SD, Harries AD, Anglaret X, et al. Early mortality among adults accessing antiretroviral treatment programmes in sub-Saharan Africa. *AIDS*. 2008 Oct 1; 22(15):1897–908.
5. Brinkhof MW, Boulle A, Weigel R, et al. Mortality of HIV-infected patients starting antiretroviral therapy in sub-Saharan Africa: comparison with HIV-unrelated mortality. *PLoS Med*. 2009 Apr 28;6(4):e1000066. Epub 2009 Apr 28.
6. Braitstein P, Brinkhof MW, Dabis F, et al. Mortality of HIV-1-infected patients in the first year of antiretroviral therapy: comparison between low-income and high-income countries. *Lancet*. 2006 Mar 11;367(9513):817–24.
7. Cohen MS, Chen YQ, McCauley M, et al. Prevention of HIV-1 infection with early antiretroviral therapy. *N Engl J Med*. 2011 Aug 11;365(6):493–505. Epub 2011 Jul 18.
8. Egger M. Outcomes of ART in resource-limited and industrialized countries. Presented at: Conference on retroviruses and opportunistic infections (CROI), Denver (CO), Oct 2007.
9. World Health Organization. Antiretroviral therapy for HIV infection in adults and adolescents. Geneva, Switzerland: World Health Organization, 2009.
10. Bassett IV, Regan S, Chetty S, et al. Who starts antiretroviral therapy in Durban, South Africa? . . . not everyone who should. *AIDS*. 2010 Jan;24 Suppl 1:S37–44.
11. Bassett IV, Wang B, Chetty S, et al. Loss to care and death before antiretroviral therapy in Durban, South Africa. *J Acquir Immune Defic Syndr*. 2009 Jun 1;51(2):135–9.
12. Boulle A, Van Cutsem G, Hilderbrand K, et al. Seven-year experience of a primary care antiretroviral treatment programme in Khayelitsha, South Africa. *AIDS*. 2010 Feb 20;24(4):563–72.
13. Charurat M, Oyegunle M, Benjamin R, et al. Patient retention and adherence to antiretrovirals in a large antiretroviral therapy program in Nigeria: a longitudinal analysis for risk factors. *PLoS One*. 2010 May 11;5(5):e10584.
14. De Beaudrap P, Etard JF, Diouf A, et al. Incidence and determinants of new AIDS-defining illnesses after HAART initiation in a Senegalese cohort. *BMC Infect Dis*. 2010 Jun 19; 10:179.
15. Ekouevi DK, Balestre E, Ba-Gomis FO, et al. Low retention of HIV-infected patients on antiretroviral therapy in 11 clinical centres in West Africa. *Trop Med Int Health*. 2010 Jun;15 Suppl 1:34–42.
16. Fairall LR, Bachmann MO, Louwagie GM, et al. Effectiveness of antiretroviral treatment in a South African program: a cohort study. *Arch Intern Med*. 2008 Jan 14;168(1):86–93.
17. Ford N, Kranzer K, Hilderbrand K, et al. Early initiation of antiretroviral therapy and associated reduction in mortality, morbidity and defaulting in a nurse-managed, community cohort in Lesotho. *AIDS*. 2010 Nov 13;24(17):2645–50.
18. Ingle SM, May M, Uebel K, et al. Outcomes in patients waiting for antiretroviral

- treatment in the Free State Province, South Africa: prospective linkage study. *AIDS*. 2010 Nov 13;24(17):2717–25.
19. Keiser O, Anastos K, Schechter M, et al. Antiretroviral therapy in resource-limited settings 1996 to 2006: patient characteristics, treatment regimens and monitoring in sub-Saharan Africa, Asia and Latin America. *Trop Med Int Health*. 2008 Jul;13(7):870–9. Epub 2008 Mar 27.
  20. Kranzer K, Zeinecker J, Ginsberg P, et al. Linkage to HIV care and antiretroviral therapy in Cape Town, South Africa. *PLoS One*. 2010 Nov 2;5(11):e13801.
  21. Lahuerta M, Lima J, Elul B, et al. Patients enrolled in HIV care in Mozambique: Baseline characteristics and follow-up outcomes. *J Acquir Immune Defic Syndr*. 2011 Nov 11;58(3):e75–86.
  22. Lahuerta M, Lima J, Nuwagaba-Biribonwoha H, et al. Factors Associated with Late Antiretroviral Therapy Initiation among Adults in Mozambique. *PLoS One*. 2012;7(5):e37125. Epub 2012 May 15.
  23. Larson BA, Brennan A, McNamara L, et al. Lost opportunities to complete CD4+ lymphocyte testing among patients who tested positive for HIV in South Africa. *Bull World Health Organ*. 2010 Jan 18;88(9):675–80.
  24. Lowrance DW, Ndamage F, Kayirangwa E, et al. Adult clinical and immunologic outcomes of the national antiretroviral treatment program in Rwanda during 2004–2005. *J Acquir Immune Defic Syndr*. 2009 Sep 1;52(1):49–55.
  25. MacPherson P, Moshabela M, Martinson N, et al. Mortality and loss to follow-up among HAART initiators in rural South Africa. *Trans R Soc Trop Med Hyg*. 2009 Jun;103(6):588–93. Epub 2008 Nov 13.
  26. Marcellin F, Abe C, Loubiere S, et al. Delayed first consultation after diagnosis of HIV infection in Cameroon. *AIDS*. 2009 May 15;23(8):1015–9.
  27. Nash D, Katyal M, Brinkhof MW, et al. Long-term immunologic response to antiretroviral therapy in low-income countries: a collaborative analysis of prospective studies. *AIDS*. 2008 Nov 12;22(17):2291–302.
  28. Nash D, Wu Y, Elul B, et al. Program-level and contextual-level determinants of low-median CD4+ cell count in cohorts of persons initiating ART in eight sub-Saharan African countries. *AIDS*. 2011 Jul 31;25(12):1523–33.
  29. Okome-Nkoumou M, Okome-Miame F, Kendjo E, et al. Delay between first HIV-related symptoms and diagnosis of HIV infection in patients attending the internal medicine department of the Fondation Jeanne Ebori (FJE), Libreville, Gabon. *HIV Clin Trials*. 2005 Jan–Feb; 6(1):38–42.
  30. Rougemont M, Stoll BE, Elia N, et al. Antiretroviral treatment adherence and its determinants in Sub-Saharan Africa: a prospective study at Yaounde Central Hospital, Cameroon. *AIDS Res Ther*. 2009 Oct 12;6:21.
  31. Sanne IM, Westreich D, Macphail AP, et al. Long term outcomes of antiretroviral therapy in a large HIV/AIDS care clinic in urban South Africa: a prospective cohort study. *J Int AIDS Soc*. 2009 Dec 17;12:38.
  32. Sieleunou I, Souleymanou M, Schonenberger AM, et al. Determinants of survival in AIDS patients on antiretroviral therapy in a rural centre in the Far-North Province, Cameroon. *Trop Med Int Health*. 2009 Jan;14(1):36–43. Epub 2008 Nov 12.
  33. Delpierre C, Cuzin L, Lauwers-Cances V, et al. High-Risk groups for late diagnosis of HIV infection: a need for rethinking testing policy in the general population. *AIDS Patient Care STDS*. 2006 Dec;20(12):838–47.
  34. Rotily M, Bentz L, Pradier C, et al. Factors related to delayed diagnosis of HIV infection in southeastern France. *Int J STD AIDS*. 2000 Aug;11(8):531–5.

35. Severe P, Juste MA, Ambroise A, et al. Early versus standard antiretroviral therapy for HIV-infected adults in Haiti. *N Engl J Med*. 2010 Jul 15;363(3):257–65.
36. Gupta SB, Gilbert RL, Brady AR, et al. CD4 cell counts in adults with newly diagnosed HIV infection: results of surveillance in England and Wales, 1990–1998. CD4 Surveillance Scheme Advisory Group. *AIDS*. 2000 May 5;14(7):853–61.
37. Losina E, Schackman BR, Sadownik SN, et al. Racial and sex disparities in life expectancy losses among HIV-infected persons in the united states: impact of risk behavior, late initiation, and early discontinuation of antiretroviral therapy. *Clin Infect Dis*. 2009 Nov 15;49(10):1570–8.
38. Mojumdar K, Vajpayee M, Chauhan NK, et al. Late presenters to HIV care and treatment, identification of associated risk factors in HIV-1 infected Indian population. *BMC Public Health*. 2010 Jul 13;10:416.
39. Muhamadi L, Nsabagasani X, Tumwesigye MN, et al. Inadequate pre-antiretroviral care, stock-out of antiretroviral drugs and stigma: policy challenges/bottlenecks to the new WHO recommendations for earlier initiation of antiretroviral therapy (CD<350 cells/ $\mu$ L) in eastern Uganda. *Health Policy*. 2010 Jul;97(2–3):187–194.
40. Wolbers M, Bucher HC, Furrer H, et al. Delayed diagnosis of HIV infection and late initiation of antiretroviral therapy in the Swiss HIV Cohort Study. *HIV Med*. 2008 Jul;9(6): 397–405. Epub 2008 Apr 10.
41. Antinori A, Coenen T, Costagiola D, et al. Late presentation of HIV infection: a consensus definition. *HIV Med*. 2011 Jan;12(1):61–4.
42. Rosen S, Fox M, Larson B. From HIV testing-to-treatment initiation: the missing link. Presented at: Conference on retroviruses and opportunistic infections (CROI), Boston (MA), Oct 2011.
43. Waters L, Sabin CA. Late HIV presentation: epidemiology, clinical implications and management. *Expert Rev Anti Infect Ther*. 2011 Oct;9(10):877–89.
44. Bussmann H, Wester CW, Ndwapi N, et al. Five-year outcomes of initial patients treated in Botswana's National Antiretroviral Treatment Program. *AIDS*. 2008 Nov 12;22(17):2303–11.
45. Lawn SD, Badri M, Wood R. Tuberculosis among HIV-infected patients receiving HAART: long term incidence and risk factors in a South African cohort. *AIDS*. 2005 Dec 2;19(18):2109–16.
46. El-Sadr WM, Hoos D. The President's emergency plan for AIDS Relief—is the emergency over? *N Engl J Med*. 2008 Aug 7;359(6):553–5. Epub 2008 Jul 30.
47. Bonnet F, Thiebaut R, Chene G, et al. Determinants of clinical progression in antiretroviral-naive HIV-infected patients starting highly active antiretroviral therapy. *HIV Med*. 2005 May;6(3):198–205.
48. Egger M, May M, Chene G, et al. Prognosis of HIV-1-infected patients starting highly active antiretroviral therapy: a collaborative analysis of prospective studies. *Lancet*. 2002 Jul 13;360(9327):119–29.
49. Baillargeon J, Grady J, Borucki MJ. Immunological predictors of HIV-related survival. *Int J STD AIDS*. 1999 Jul;10(7):467–70.
50. Etard JF, Ndiaye I, Thierry-Mieg M, et al. Mortality and causes of death in adults receiving highly active antiretroviral therapy in Senegal: a 7-year cohort study. *AIDS*. 2006 May 12;20(8):1181–9.
51. Badri M, Lawn SD, Wood R. Short-term risk of AIDS or death in people infected with HIV-1 before antiretroviral therapy in South Africa: a longitudinal study. *Lancet*. 2006 Oct 7; 368(9543):1254–9.

52. Ferradini L, Jeannin A, Pinoges L, et al. Scaling up of highly active antiretroviral therapy in a rural district of Malawi: an effectiveness assessment. *Lancet*. 2006 Apr 22;367(9519):1335–42.
53. Lawn SD, Myer L, Bekker LG, et al. Burden of tuberculosis in an antiretroviral treatment programme in sub-Saharan Africa: impact on treatment outcomes and implications for tuberculosis control. *AIDS*. 2006 Aug 1;20(12):1605–12.
54. Lawn SD, Myer L, Bekker LG, et al. Tuberculosis-associated immune reconstitution disease: incidence, risk factors and impact in an antiretroviral treatment service in South Africa. *AIDS*. 2007 Jan 30;21(3):335–41.
55. Easterbrook P, Ibrahim F, Kiragga A, et al. More advanced disease at ART initiation and high death rate from opportunistic infections may explain higher mortality among African patients initiating ART in Uganda compared with London. Presented at: Conference on retroviruses and opportunistic infections (CROI), Montreal (Canada), 2009.
56. Kambugu A, Castelnuovo B, Kiragga A, et al. Cause-specific mortality and contribution of immune reconstitution inflammatory syndrome during the first 2 years of ART in Uganda. Presented at: Conference on retroviruses and opportunistic infections (CROI), Boston (MA), Oct 2008.
57. Lessells RJ, Mutevedzi PC, Cooke GS, et al. Retention in HIV care for individuals not yet eligible for antiretroviral therapy: Rural KwaZulu-Natal, South Africa. *J Acquir Immune Defic Syndr*. 2011 Mar;56(3):e79–86.
58. UNAIDS. Report on the global AIDS epidemic. Geneva, Switzerland: UNAIDS, 2008.
59. Anderson RM, May RM. Epidemiological parameters of HIV transmission. *Nature*. 1988 Jun 9;333(6173):514–9.
60. Levy JA. Mysteries of HIV: challenges for therapy and prevention. *Nature*. 1988 Jun 9; 333(6173):519–22.
61. Hollingsworth TD, Anderson RM, Fraser C. HIV-1 transmission, by stage of infection. *J Infect Dis*. 2008 Sep 1;198(5):687–93.
62. Wawer MJ, Gray RH, Sewankambo NK, et al. Rates of HIV-1 transmission per coital act, by stage of HIV-1 infection, in Rakai, Uganda. *J Infect Dis*. 2005 May 1;191(9):1403–9. Epub 2005 Mar 30.
63. Quinn TC, Wawer MJ, Sewankambo N, et al. Viral load and heterosexual transmission of human immunodeficiency virus type 1. Rakai Project Study Group. *N Engl J Med*. 2000 Mar 30;342(13):921–9.
64. Granich RM, Gilks CF, Dye C, et al. Universal voluntary HIV testing with immediate antiretroviral therapy as a strategy for elimination of HIV transmission: a mathematical model. *Lancet*. 2009 Jan 3;373(9657):48–57. Epub 2008 Nov 27.
65. Das M, Chu PL, Santos GM, et al. Decreases in community viral load are accompanied by reductions in new HIV infections in San Francisco. *PLoS One*. 2010 Jun 10;5(6):e11068.
66. Montaner JS, Lima VD, Barrios R, et al. Association of highly active antiretroviral therapy coverage, population viral load, and yearly new HIV diagnoses in British Columbia, Canada: a population-based study. *Lancet*. 2010 Aug 14;376(9740):532–9. Epub 2010 Jul 16.
67. Borghi V, Girardi E, Bellelli S, et al. Late presenters in an HIV surveillance system in Italy during the period 1992–2006. *J Acquir Immune Defic Syndr*. 2008 Nov 1;49(3):282–6.
68. Girardi E, Sabin CA, Monforte AD. Late diagnosis of HIV infection: epidemiological

- features, consequences and strategies to encourage earlier testing. *J Acquir Immune Defic Syndr*. 2007 Sep;46 Suppl 1:S3–8.
69. Hanna DB, Pfeiffer MR, Torian LV, et al. Concurrent HIV/AIDS diagnosis increases the risk of short-term HIV-related death among persons newly diagnosed with AIDS, 2002–2005. *AIDS Patient Care STDS*. 2008 Jan;22(1):17–28.
  70. Krawczyk CS, Funkhouser E, Kilby JM, et al. Delayed access to HIV diagnosis and care: Special concerns for the Southern United States. *AIDS Care*. 2006;18 Suppl 1: S35–44.
  71. Sabin CA, Smith CJ, Youle M, et al. Deaths in the era of HAART: contribution of late presentation, treatment exposure, resistance and abnormal laboratory markers. *AIDS*. 2006 Jan 2;20(1):67–71.
  72. Ulett KB, Willig JH, Lin HY, et al. The therapeutic implications of timely linkage and early retention in HIV care. *AIDS Patient Care STDS*. 2009 Jan;23(1):41–9.
  73. Grigoryan A, Hall HI, Durant T, et al. Late HIV diagnosis and determinants of progression to AIDS or death after HIV diagnosis among injection drug users, 33 US States, 1996–2004. *PLoS One*. 2009;4(2):e4445. Epub 2009 Feb 13.
  74. Sabin CA, Smith CJ, Gumley H, et al. Late presenters in the era of highly active antiretroviral therapy: uptake of and responses to antiretroviral therapy. *AIDS*. 2004 Nov 5;18(16):2145–51.
  75. Schwarcz S, Richards TA, Frank H, et al. Identifying barriers to HIV testing: personal and contextual factors associated with late HIV testing. *AIDS Care*. 2011 Jul;23(7):892–900.
  76. Thanawuth N, Chongsuvivatwong V. Late HIV diagnosis and delay in CD4 count measurement among HIV-infected patients in Southern Thailand. *AIDS Care*. 2008 Jan; 20(1):43–50.
  77. Kiartiburanakul S, Boonyarattaphun K, Atamasirikul K, et al. Clinical presentations of newly diagnosed HIV-infected patients at a university hospital in Bangkok, Thailand. *J Int Assoc Physicians AIDS Care (Chic)*. 2008 Mar–Apr;7(2):82–7. Epub 2008 Mar 4.
  78. Kilaru KR, Kumar A, Sippy N. CD4 cell counts in adults with newly diagnosed HIV infection in Barbados. *Rev Panam Salud Publica*. 2004 Nov;16(5):302–7.
  79. Kigozi IM, Dobkin LM, Martin JN, et al. Late-disease stage at presentation to an HIV clinic in the era of free antiretroviral therapy in Sub-Saharan Africa. *J Acquir Immune Defic Syndr*. 2009 Oct 1;52(2):280–9.
  80. Castilla J, Sobrino P, De La Fuente L, et al. Late diagnosis of HIV infection in the era of highly active antiretroviral therapy: consequences for AIDS incidence. *AIDS*. 2002 Sep 27;16(14):1945–51.
  81. Forbi JC, Forbi TD, Agwale SM. Estimating the time period between infection and diagnosis based on CD4+ counts at first diagnosis among HIV-1 antiretroviral naive patients in Nigeria. *J Infect Dev Ctries*. 2010 Oct 28;4(10):662–7.
  82. Measure-Evaluation. Demographic and Health Surveys. Calverton, MD: Measure-Evaluation, 2011.
  83. April MD, Walensky RP, Chang Y, et al. HIV testing rates and outcomes in a South African community, 2001–2006: implications for expanded screening policies. *J Acquir Immune Defic Syndr*. 2009 Jul 1;51(3):310–6.
  84. Ongolo-Zogo P, Loubiere S, Boyer S, et al. Determinants of delayed first consultation after diagnosis of HIV infection in Cameroon: results from the ANRS EVAL 12–116 study. Presented at: Conference on AIDS, Mexico City (Mexico), Nov 2008:.
  85. Abaynew Y, Deribew A, Deribe A. Factors associated with late presentation to HIV/

- AIDS care in South Wollo Zone Ethiopia: a case-control study. *AIDS Res Ther.* 2011 Feb 28;8(1):8.
86. Grubb J, Perriens J, Schwartländer B. Overcoming constraints, a public health approach to antiretroviral treatment. Geneva, Switzerland: World Health Organization, 2003.
  87. Kruse GR, Chapula BT, Ikeda S, et al. Burnout and use of HIV services among health care workers in Lusaka District, Zambia: a cross-sectional study. *Hum Resour Health.* 2009 Jul 13;7:55.
  88. Amuron B, Namara G, Birungi J, et al. Mortality and loss-to-follow-up during the pre-treatment period in an antiretroviral therapy programme under normal health service conditions in Uganda. *BMC Public Health.* 2009 Aug 11;9:290.
  89. Moore D, Campbell J, Chan K, et al. Death, clinical disease, and advanced immunodeficiency among HIV-infected individuals who are found to be initially ineligible for ART at screening. Presented at: Conference on retroviruses and opportunistic infections (CROI), Montreal (Canada), Oct 2009.
  90. Horstmann E, Brown J, Islam F, et al. Retaining HIV-infected patients in care: where are we? Where do we go from here? *Clin Infect Dis.* 2010 Mar 1;50(5):752–61.
  91. Ingle S, Fairall L, Timmerman V, et al. Determinants of Waiting Times for ART in the Free State Province, South Africa. Presented at: Conference on retroviruses and opportunistic infections (CROI), Montreal (Canada), Oct 2009.
  92. Wouters E, Heunis C, van Rensburg D, et al. Patient satisfaction with antiretroviral services at primary health-care facilities in the Free State, South Africa—a two-year study using four waves of cross-sectional data. *BMC Health Serv Res.* 2008 Oct 9;8:210.
  93. Karim S, Naidoo K, Grobler A, et al. Initiating ART during TB Treatment Significantly Increases Survival: Results of a Randomized Controlled Clinical Trial in TB/HIV-co-infected Patients in South Africa. Presented at: Conference on retroviruses and opportunistic infections (CROI), Montreal (Canada), Oct 2009.
  94. Micek MA, Gimbel-Sherr K, Baptista AJ, et al. Loss to follow-up of adults in public HIV care systems in central mozambique: identifying obstacles to treatment. *J Acquir Immune Defic Syndr.* 2009 Nov 1;52(3):397–405.
  95. Rosen S, Fox MP. Retention in HIV care between testing and treatment in sub-saharan africa: a systematic review. *PLoS Med.* 2011 Jul;8(7):e1001056. Epub 2011 Jul 19.
  96. World Health Organization. Rapid advice: antiretroviral therapy for HIV infection in adults and adolescents—November 2009. Geneva, Switzerland: World Health Organization, 2009.
  97. Aday LA, Andersen RM. A framework for the study of access to medical care. *Health Services Research.* 1974 Fall;9(3):208–20.
  98. Andersen RM. Behavioral model of families' use of health services. Chicago, IL: University of Chicago, 1968.
  99. Conviser R, Pounds MB. The role of ancillary services in client-centred systems of care. *AIDS Care.* 2002 Aug;14 Suppl 1:S119–S31.
  100. Aday LA, Awe WC. Health services utilization models. In: Handbook of health behavior research. Gochman DS, (ed). New York, NY: Plenum Press, 1997.
  101. Andersen RM. Revisiting the behavioral model and access to medical care: does it matter? *J Health Soc Behav.* 1995 Mar;36:1–10.
  102. Chesney M, Smith AW. Critical delays in HIV testing and care: the potential role of stigma. *American Behavioral Scientist.* 1999 Apr;42(7):1162–74.
  103. Schuster MA, Collins R, Cunningham WE, et al. Perceived discrimination in clinical care in a nationally representative sample of HIV-infected adults receiving health care. *J Gen Intern Med.* 2005 Sep;20(9):807–13.

104. Feucht UD, Kinzer M, Kruger M. Reasons for delay in initiation of antiretroviral therapy in a population of HIV-infected South African children. *J Trop Pediatr*. 2007 Dec;53(6):398–402. Epub 2007 Oct 26.
105. Mshana GH, Wamoyi J, Busza J, et al. Barriers to accessing antiretroviral therapy in Kisesa, Tanzania: a qualitative study of early rural referrals to the national program. *AIDS Patient Care STDS*. 2006 Sep;20(9):649–57.
106. Ogden J, Nyblade L. *Common at its core: HIV-related stigma across contexts*. Washington, DC: International Center for Research on Women, 2005.
107. Weiser S, Wolfe W, Bangsberg D, et al. Barriers to antiretroviral adherence for patients living with HIV infection and AIDS in Botswana. *J Acquir Immune Defic Syndr*. 2003 Nov 1;34(3):281–8.
108. Nash D, Elul B, Rabkin M, et al. Strategies for more effective monitoring and evaluation systems in HIV programmatic scale-up in resource-limited settings: implications for health systems strengthening. *J Acquir Immune Defic Syndr*. 2009 Nov;52(Suppl 1):S58–62.
109. Mullan F, Frehywot S. Non-physician clinicians in 47 sub-Saharan African countries. *Lancet*. 2007 Dec 22;370(9605):2158–63.
110. Kinfu Y, Dal Poz MR, Mercer H, et al. The health worker shortage in Africa: are enough physicians and nurses being trained? *Bull World Health Organ*. 2009 Mar;87(3):225–30.
111. Kober K, Van Damme W. Scaling up access to antiretroviral treatment in southern Africa: who will do the job? *Lancet*. 2004 Jul 3–9;364(9428):103–7.
112. Were MC, Sutherland JM, Bwana M, et al. Patterns of care in two HIV continuity clinics in Uganda, Africa: a time-motion study. *AIDS Care*. 2008 Jul;20(6):677–82.
113. Mugavero MJ, Davila JA, Nevin CR, et al. From access to engagement: measuring retention in outpatient HIV clinical care. *AIDS Patient Care STDS*. 2010 Oct;24(10):607–13.
114. Strathdee SA, Palepu A, Cornelisse PG, et al. Barriers to use of free antiretroviral therapy in injection drug users. *JAMA*. 1998 Aug 12;280(6):547–9.
115. Hardon AP, Akurut D, Comoro C, et al. Hunger, waiting time and transport costs: time to confront challenges to ART adherence in Africa. *AIDS Care*. 2007 May; 19(5):658–65.
116. Raveis VH, Siegel K, Gorey E. Factors associated with HIV-infected women's delay in seeking medical care. *AIDS Care*. 1998 Oct;10(5):549–62.
117. Mills EA. From the physical self to the social body: expressions and effects of HIV-related stigma in South Africa. *J Community Applied Soc Psychol*. 2006 Oct 25; 16(6):498–503.
118. Bupamba EA. "Ambassadors for adherence": provision of highly effective default tracing and re-engagement by peer educators in Tanzania. Presented at: International AIDS Conference, Vienna, Austria, Jun 2010.
119. Falcao J. Involving PLHIV in successful home visit system to improve antiretroviral therapy (ART) programme retention in Mozambique. Presented at: International AIDS Conference, Vienna, Austria, Jun 2010.
120. Lamb MR, El-Sadr WM, Geng E, et al. Association of adherence support and outreach services with total attrition, loss to follow-up, and death among ART Patients in Sub-Saharan Africa. *PLoS One*. 2012;7(6):e38443. Epub 2012 Jun 7.
121. Ramjee G, Coumi N, Dladla-Qwabe N, et al. Experiences in conducting multiple community-based HIV prevention trials among women in KwaZulu-Natal, South Africa. *AIDS Res Ther*. 2010 Apr 23;7:10.
122. Posse M, Baltussen R. Barriers to access to antiretroviral treatment in Mozambique,



- as perceived by patients and health workers in urban and rural settings. *AIDS Patient Care STDS*. 2009 Oct;23(10):867–75.
123. Dahab M, Charalambous S, Hamilton R, et al. “That is why I stopped the ART”: patients’ & providers’ perspectives on barriers to and enablers of HIV treatment adherence in a South African workplace programme. *BMC Public Health*. 2008 Feb 18;8:63.
  124. Braitstein P, Boulle A, Nash D, et al. Gender and the use of antiretroviral treatment in resource-constrained settings: findings from a multicenter collaboration. *J Womens Health (Larchmt)*. 2008 Jan–Feb;17(1):47–55.
  125. Parkes R, Namakoola I, Todd J, et al. Barriers to rapid initiation of ART in a cohort of HIV positive Ugandan adults with CD4 counts less than 200. Presented at: Conference on AIDS, Toronto, Canada, 2006.
  126. Miller CM, Kethlapile M, Rybasack-Smith H, et al. Why are antiretroviral treatment patients lost to follow-up? A qualitative study from South Africa. *Trop Med Int Health*. 2010 Jun;15 Suppl 1:48–54.
  127. Worley S, Didiza Z, Nomatshila S, et al. Wellness programmes for persons living with HIV/AIDS: experiences from Eastern Cape province, South Africa. *Glob Public Health*. 2009;4(4):367–85.
  128. Harzke AJ, Williams ML, Nilsson-Schonnesson L, et al. Psychosocial factors associated with adherence to antiretroviral medications in a sample of HIV-positive African American drug users. *AIDS Care*. 2004 May;16:458–70.
  129. Wagner G, Remien RH, Carballo-Diéguez A, et al. Correlates of adherence to combination antiretroviral therapy among members of HIV-positive mixed status couples. *AIDS Care*. 2002 Feb;14:105–9.
  130. Weidle PJ, Ganea CE, Irwin K, et al. Adherence to antiretroviral medications in an inner-city population. *J Acquired Immune Deficiency Syndromes*. 1999 Dec 15; 22:498–502.
  131. Simbayi LC, Kalichman S, Strebel A, et al. Internalized stigma, discrimination, and depression among men and women living with HIV/AIDS in Cape Town, South Africa. *Soc Sci Med*. 2007 May;64(9):1823–31. Epub 2007 Mar 2.
  132. Bangsberg D. Perspectives on adherence and resistance to ART. Presented at: Conference on retrovirus and opportunistic infections, Boston, MA, 2011.
  133. Leserman J, Jackson ED, Petitto JM, et al. Progression to AIDS: The effects of stress, depressive symptoms, and social support. *Psychosomatic Med*. 1999 May–Jun; 61:397–406.
  134. Swindells S, Mohr J, Justis JC, et al. Quality of life inpatients with human immunodeficiency virus infection: impact of social support, coping style and hopelessness. *Int J STD AIDS*. 1999 Jun;10(6):383–91.
  135. Ware NC, Idoko J, Kaaya S, et al. Explaining adherence success in sub-Saharan Africa: an ethnographic study. *PLoS Med*. 2009 Jan 27;6(1):e11.
  136. Levy RL. Social support and compliance: a selective review and critique of treatment integrity and outcome measurement. *Soc Sci Med*. 1983;17(18):1329–38.
  137. Wouters E, van Loon F, van Rensburg D, et al. Community support and disclosure of HIV serostatus to family members by public-sector antiretroviral treatment patients in the free state province of South Africa. *AIDS Patient Care STDS*. 2009 May;23(5):357–64.
  138. Birbeck GL, Chomba E, Kvalsund M, et al. Antiretroviral adherence in rural Zambia: the first year of treatment availability. *Am J Trop Med Hyg*. 2009 Apr;80(4):669–74.
  139. Day JH, Myamura K, Grant AD, et al. Attitudes to HIV voluntary counselling and

- testing among mineworkers in South Africa: will availability of antiretroviral therapy encourage testing? . *AIDS Care*. 2003 Oct;15(5):665–72.
140. Kalichman SC, Simbayi LC. HIV testing attitudes, AIDS stigma, and voluntary HIV counselling and testing in a black township in Cape Town, South Africa. *Sexually Transmitted Infections*. 2003 Dec;79(6):442–7.
  141. Losina E, Bassett IV, Giddy J, et al. The “ART” of linkage: pre-treatment loss to care after HIV diagnosis at two PEPFAR sites in Durban, South Africa. *PLoS One*. 2010 Mar 4;5(3): e9538.
  142. Centers for Disease Control and Prevention. *Diagnosis and reporting of HIV and AIDS in states with HIV/AIDS surveillance—United States, 1994–2000*. Atlanta, GA: Centers for Disease Control and Prevention, 2002.
  143. Nash D, Ramaswamy C, Manning S. Implementation of named HIV reporting—New York City, 2001. *MMWR Morb Mortal Wkly Rep*. 2004 Jan 2;52(51–52):1248–52.
  144. Samet JH, Freedberg KA, Stein MD, et al. Trillion virion delay: time from testing positive for HIV to presentation for primary care. *Arch Intern Med*. 1998 Apr 13;158(7):734–40.
  145. Samet JH, Freedberg KA, Savetsky JB, et al. Understanding delay to medical care for HIV infection: the long-term non-presenter. *AIDS*. 2001 Jan 5;15(1):77–85.
  146. Mugavero MJ, Lin HY, Allison JJ, et al. Failure to establish HIV care: characterizing the “no show” phenomenon. *Clin Infect Dis*. 2007 Jul 1;45(1):127–30. Epub 2007 May 23.
  147. Althoff KN, Gange SJ, Klein MB, et al. Late presentation for human immunodeficiency virus care in the United States and Canada. *Clin Infect Dis*. 2010 Jun 1;50(11):1512–20.
  148. Torian LV, Wiewel EW, Liu KL, et al. Risk factors for delayed initiation of medical care after diagnosis of human immunodeficiency virus. *Arch Intern Med*. 2008 Jun 9;168(11):1181–7.
  149. Krawczyk CS, Funkhouser E, Kilby JM, et al. Factors associated with delayed initiation of HIV medical care among infected persons attending a southern HIV/AIDS clinic. *South Med J*. 2006 May;99(5):472–81.
  150. Chen M, Rhodes PH, Hall HI, et al. Prevalence of undiagnosed hiv infection among persons aged  $\geq 13$  years—national hiv surveillance system, United States, 2005–2008. *MMWR Morb Mortal Wkly Rep*. 2012 Jun 15;61Suppl:57–64.
  151. Gardner EM, McLees MP, Steiner JF, et al. The spectrum of engagement in HIV care and its relevance to test-and-treat strategies for prevention of HIV infection. *Clin Infect Dis*. 2011 Mar 15;52(6):793–800.
  152. Rubin MS, Colen CG, Link BG. Examination of inequalities in HIV/AIDS mortality in the United States from a fundamental cause perspective. *Am J Public Health*. 2010 Jun;100(6):1053–9. Epub 2010 Apr 19.
  153. Nash D, Katyal M, Shah S. Trends in predictors of death due to HIV-related causes among persons living with AIDS in New York City: 1993–2001. *J Urban Health*. 2005 Dec;82(4):584–600. Epub 2005 Oct 19.
  154. Hall HI, Song R, Rhodes P, et al. Estimation of HIV incidence in the United States. *JAMA*. 2008 Aug 6;300(5):520–9.
  155. Schwartlander B, Stover J, Hallett T, et al. Towards an improved investment approach for an effective response to HIV/AIDS. *Lancet*. 2011 Jun 11;377(9782):2031–41.
  156. Mugglin C, Althoff K, Wools-Kaloustian K, et al. Immunodeficiency at the start of ART: global view. Presented at: Conference on retrovirus and opportunistic infections, Seattle (WA), 2012.