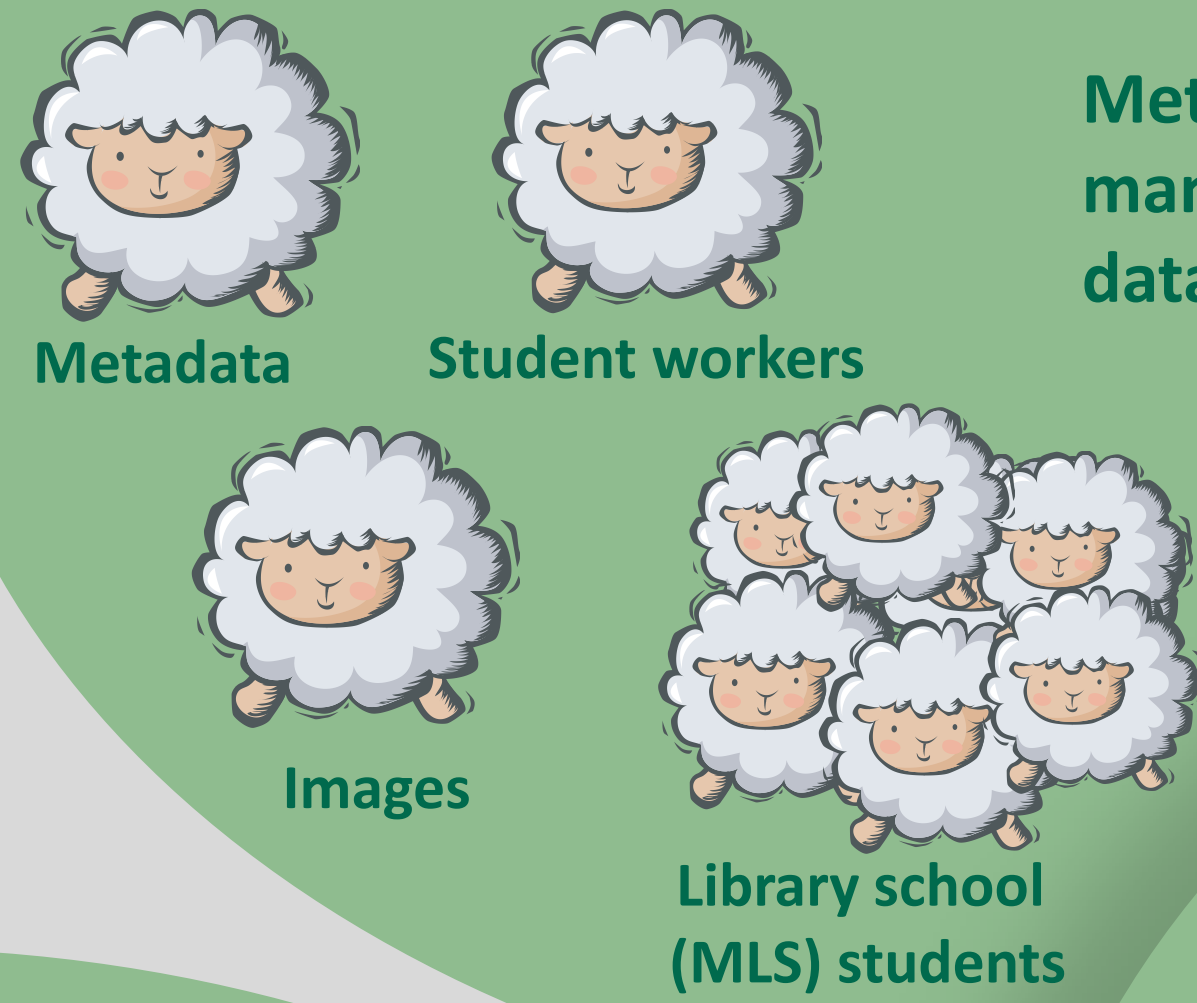


Building Digital Research Collections

Digital collections require the same care as print collections, including development of:

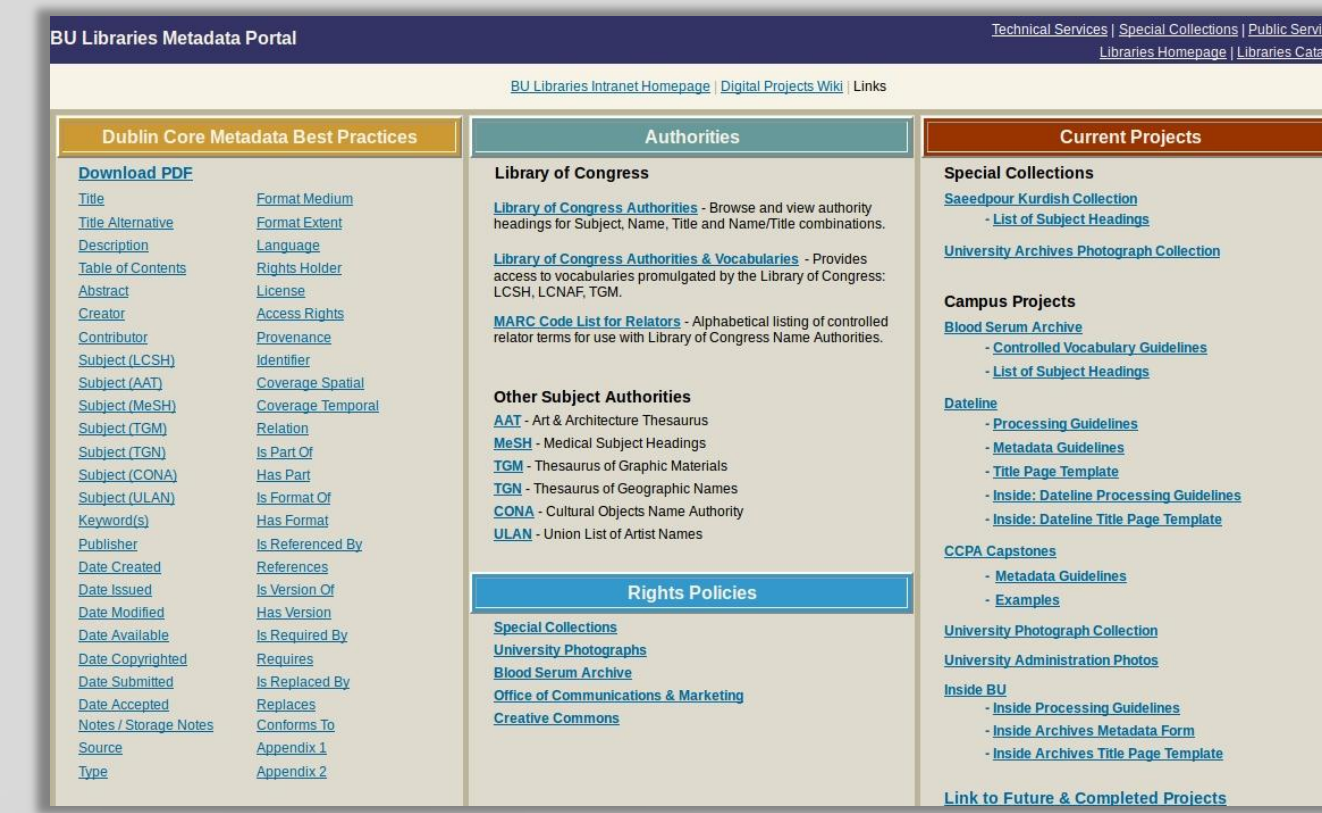
- A comprehensive collection development policy
- List of topics addressing viability and parameters for potential projects
- Memoranda of understanding for initiated projects

Metadata Librarians as Project Managers



Metadata librarians are project managers, metadata experts, and data consultants.

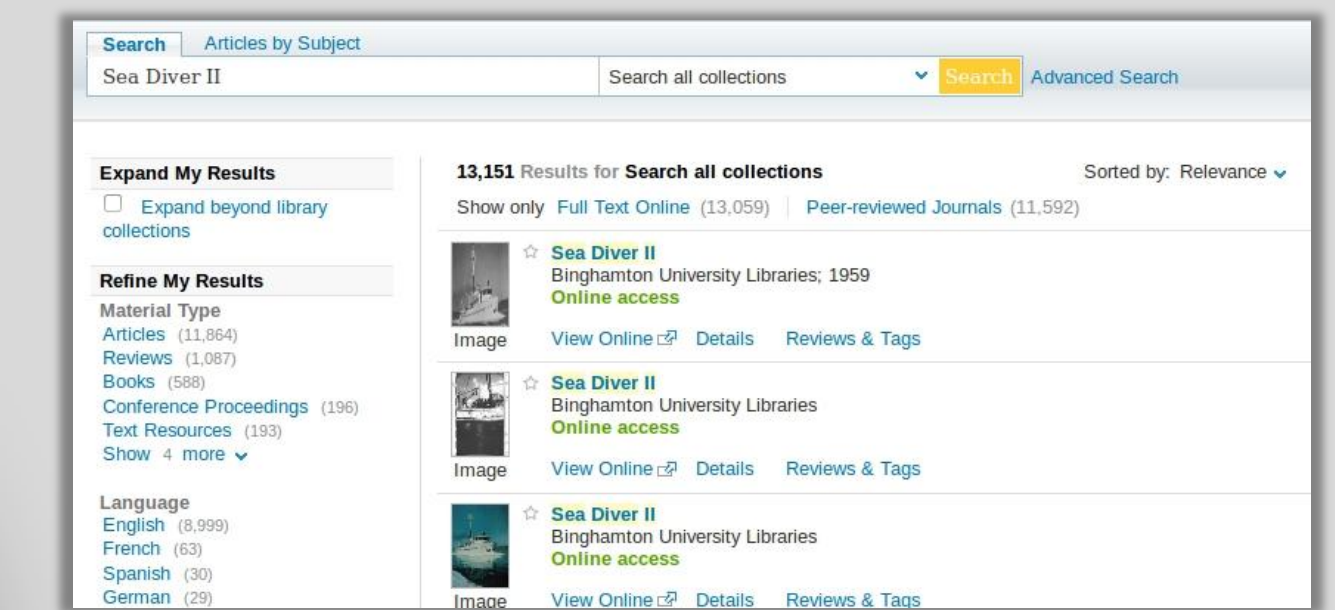
Metadata Best Practices



Librarians have assembled a metadata portal describing our metadata best practices.

Consistently following these practices helps ensure discoverability and accessibility over time.

Discoverability



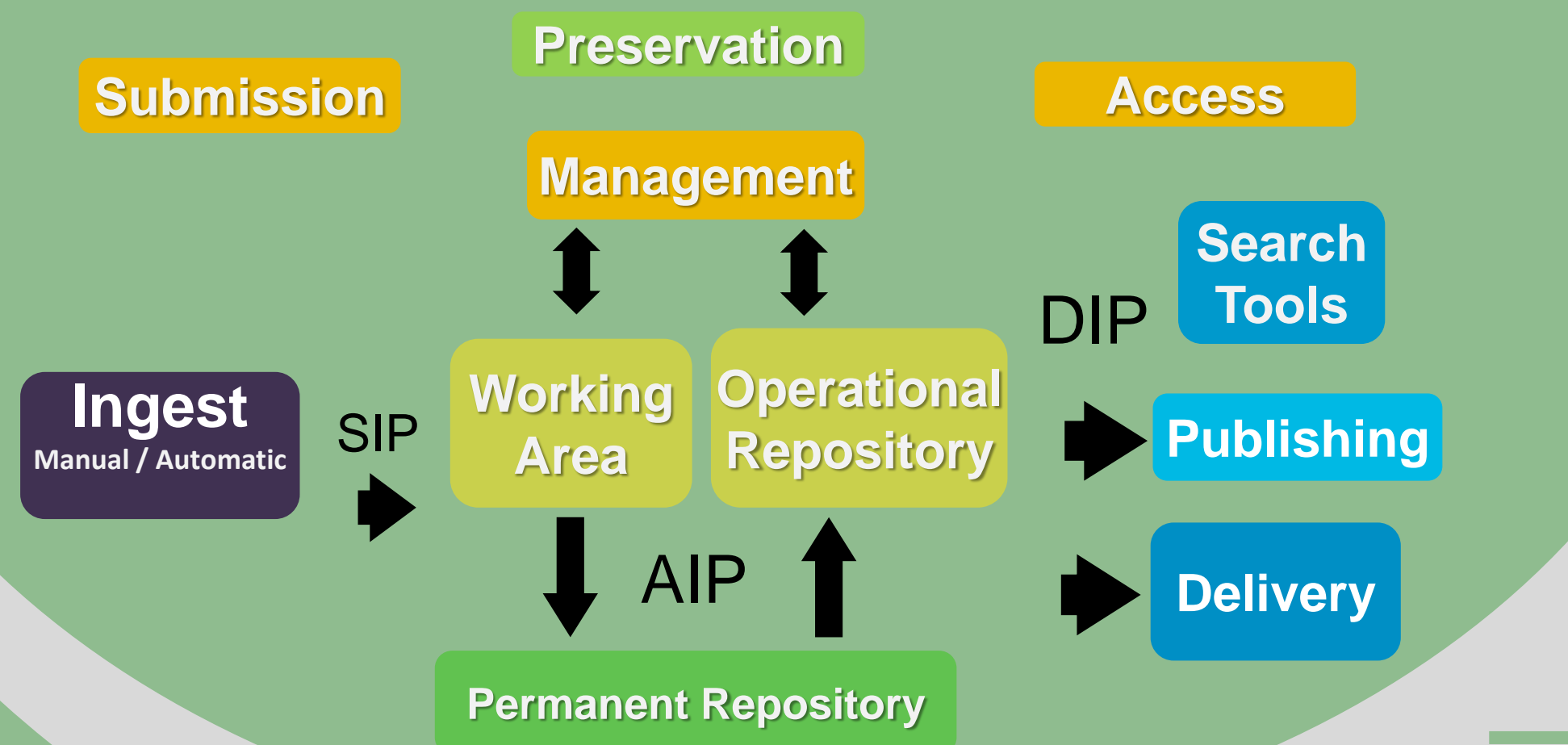
Collections can be accessed via the Libraries' discovery tool or a customized, collection-specific interface.

Local digital objects can be viewed alongside traditional formats.

Rosetta

A Digital Preservation System by Ex Libris

Rosetta supports international industry standards and conforms to NASA's OAIS Model, ISO:14721



Digital Curation And Preservation: an Integrated Approach



Support File Formats

| Levels of Digital Preservation Support | Full Support | Limited Support | Basic Support |
|---|--------------|-----------------|---------------|
| Create a permanent URL that will point to the object and/or its metadata | • | • | • |
| Generate preservation metadata to support accessibility, provenance, and management over time | • | • | • |
| Provide discovery of objects via the Libraries' Find It! discovery layer | • | • | • |
| Periodically refresh storage media | • | • | • |
| Perform fixity checks using proven checksum methods on a regular basis | • | • | • |
| Undertakes strategic monitoring of format | • | • | • |
| Offers long-term storage in a trusted preservation-worthy format | • | • | • |
| Plans and performs migration to succeeding format upon obsolescence | • | • | • |
| Plans and performs normalization if necessary | • | • | • |

<http://library.binghamton.edu/technology/digitalpreservation/levels.html>

We support many file formats, although not all formats can be offered the same level of digital preservation.

Researchers may require support for a variety of file formats.

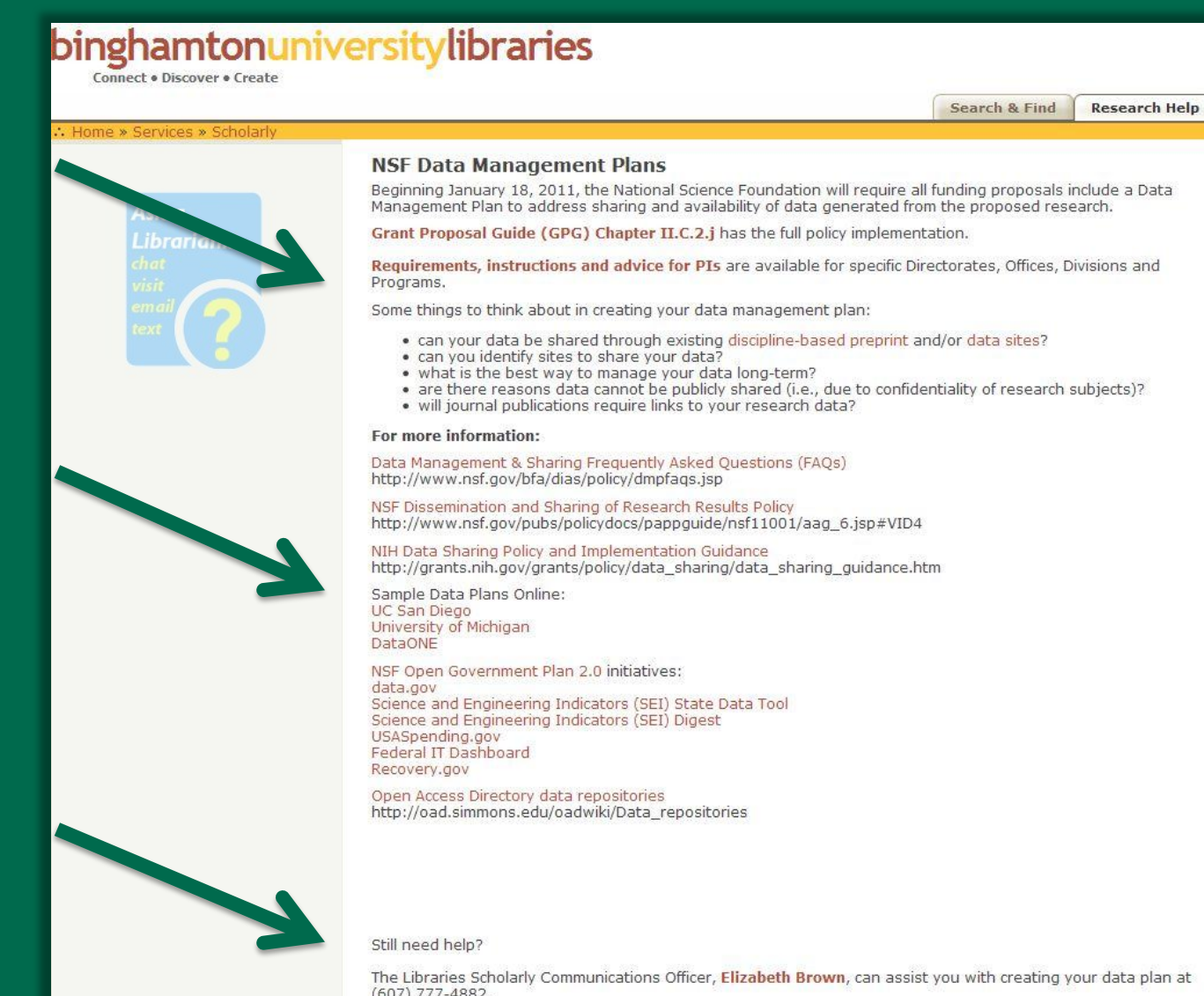
Open research tools allow researchers additional pathways to make their work available and supplement access to local digital collections.



Find funder requirements

Locate sample plans

Write, edit, review plans



Discussion of NSF Data Management Plan requirements ensures researchers understand the importance of preservation on future access to their work.

Offer Customized Access

- Dark Archive
- Limit access: Password Protected
- Limited access: IP range
- Open Access

Researchers may need to limit access to data due to privacy, patent or other concerns. Customized levels of access to digital objects ensures legal requirements are followed.