

Project Report (2003-2007)
**Analysis of impacts of climate variability
on malaria transmission in Sri Lanka and
the development of an
early warning system**



International Research Institute for Climate and Society
Earth Institute at Columbia University

Sponsors: NOAA, NSF, EPA and EPRI Joint Program on Climate Variability and Human Health

Collaborators: AMC, FECT and IWMI

Sponsors:

National Oceanic and Atmospheric Administration

National Science Foundation

Environmental Protection Agency and Electric Power Research Institute:
Joint Program on Climate Variability and Human Health

Collaborators:

Anti-Malaria Campaign, Sri Lanka Ministry of Health

Foundation for Environment, Climate and Technology, Sri Lanka

International Water Management Institute, Sri Lanka

Principal Investigator:

Lareef Zubair, lareef@iri.columbia.edu

61 Route 9W Palisades, NY 10964-8000 USA

Tel: +1.845.680.4424

View the report online at:

<http://iri.columbia.edu/~mahaweli/malaria/>

Analysis of impacts of climate variability on malaria transmission in Sri Lanka and the development of an early warning system

Report on International Research Institute for Climate and Society component of the Collaborative Project under: the NOAA, NSF, EPA and EPRI Joint Program on Climate Variability and Human Health Program

Period of Project: October 1, 2003 – September 30, 2007.

Principal Investigator: Lareef Zubair,
International Research Institute for Climate and Society,
The Earth Institute at Columbia University,
PO Box 1000, Palisades, NY10964-8000, USA.
Tel: +1-845-680-4424, Fax: +1-845-680-4864,
E-mail: lareef@iri.columbia.edu

Citation:

Zubair, L., S.J. Connor, N. Ward, G. N. L. Galapaththy, S. Mahanama, H.M. Faizal, Z. Yahiya, M. Sirwardhana, U. Tennakoon J. Chandimala, S. Razick, B. Nawarathna, J. Shaman, O.Ndiaye and H. Yang, Analysis of Impacts of Climate Variability on Malaria Transmission and the development of an early warning system, Project Report to NOAA, NSF, EPA and EPRI Joint Program on Climate Variability and Human Health, December 2007.

Table of Contents

Table of Contents	- 2 -
Executive Summary	- 4 -
A. Acknowledgements	- 6 -
B. Project Team	- 8 -
Investigators	- 8 -
Collaborators	- 8 -
C. Proposed Work Plan and Work Accomplished	- 10 -
MAIN REPORT	- 11 -
1. Project Inception Workshop	- 12 -
Background	- 12 -
Summary	- 12 -
2. Data Collection	- 12 -
Data Collection - Uva Province	- 12 -
Case data on Malaria	- 12 -
Meteorological and Hydrological data	- 12 -
Environmental data	- 13 -
Socio-economic and Demographic data	- 13 -
Data Collection – Island Wide (Sri Lanka)	- 13 -
Case Data on Malaria	- 13 -
Climate and Hydrological Data	- 13 -
Environmental data	- 13 -
Socio-economic and Demographic data	- 13 -
3. Distribution of Malaria	- 14 -
Malaria incidence by District	- 14 -
Malaria incidence by Village for Moneragala District	- 16 -
4. Climate Analysis	- 18 -
Climatological Analysis	- 18 -
Climatology	- 18 -
Climate Variability Analysis	- 20 -
Epochal Analysis	- 20 -
Climate Change Analysis	- 21 -
5. Climate Monitoring	- 22 -
6. Vulnerability Analysis	- 24 -
7. Downscaling Climate Predictions	- 25 -
8. Hydrological Modeling	- 27 -
Seasonal Streamflow Predictions	- 27 -
Catchment Land Surface Modeling	- 27 -
9. Climate and Malaria Relationships	- 30 -
Inter-Annual Variation of Malaria Incidence and El Nino	- 32 -
ENSO and Malaria Incidence	- 33 -
Relationships between Streamflow and Malaria Incidence	- 34 -
Epochal Change in Incidence and Distribution of Malaria	- 35 -
10. Climate and Malaria Relationships in Uva	- 37 -
Badulla District:	- 38 -
Moneragala District:	- 38 -
11. Predictive Malaria Risk Mapping	- 39 -
Malaria at MOH sub-district scales	- 39 -
Rainfall Malaria Relationships at MOH sub-district scales	- 40 -

	Climatic Suitability at MOH sub-district scales	- 41 -
	Climatic Suitability for Malaria Transmission.....	- 41 -
	Incorporating Vulnerability Information and Disease Control History	- 42 -
	Testing Hypothesis on Influences of Seasonal Drought on Malaria Incidence	- 42 -
	Climate Change and Malaria Incidence	- 43 -
12.	Conclusion Workshops.....	- 45 -
	Project Conclusion Workshop	- 45 -
	Training Workshop	- 45 -
13.	Publication and Dissemination.....	- 46 -
	Publications.....	- 46 -
	In Journals and Books.....	- 46 -
	Papers in Review.....	- 46 -
	Papers in Draft Form	- 46 -
	Papers in Preparation	- 47 -
	Peer Reviewed Conference Proceedings	- 47 -
	Reports	- 47 -
	Theses.....	- 47 -
	Dissemination.....	- 48 -
	Conference Proceedings and Abstracts.....	- 48 -
	Presentations	- 48 -
	Posters.....	- 49 -
14.	Outcomes	- 49 -
15.	References.....	- 50 -

Executive Summary

This is the report of the collaborative project that was led by the International Research Institute for Climate and Society (IRI) under the Climate Variability and Human Health joint program of the National Oceanic and Atmospheric Agency (NOAA) in association with National Science Foundation, Environmental Protection Agency, and Electric Power Research Institute. The complementary effort led by the International Water Management Institute (IWMI) is being reported separately.

This project set goals of bringing together a multi-disciplinary, multi-national and multi-institutional team to address the relationship between climate and malaria in aggregate terms for Sri Lanka, and in detail for the Uva Province to help develop early warning systems. The project was undertaken in partnership with Sri Lanka's Anti-Malaria Campaign (AMC) and the Foundation for Environment, Climate and Technology, Sri Lanka (FECT). Overall, we have accomplished the projected outcomes in spite of several setbacks.

Project Initiation Workshop: A successful project initiation workshop brought together relevant officials of the AMC and Uva Provincial Health and Resource Management Authorities, the Sri Lanka Department of Meteorology, the World Health Organization, NOAA, IWMI and IRI and academics from Sri Lankan Universities in December of 2003.

Database Development: Obtaining, digitizing and undertaking quality control of Sri Lanka's rich data sets took longer than anticipated. These databases are unique in terms of quality, density and duration. We have used these data to characterize climatologies, climate variability, decadal changes and climate change at fine scales (10 km). We characterized the seasonal variation of malaria at District, Sub-District and village scale for Uva Province. Gridded data sets for rainfall, maximum and minimum temperature and day and night relative humidity were used to develop estimates at the sub-district scale. Rainfall monitoring systems and prediction system were implemented at fine scales.

Climate and Malaria Relationships: Important relationships between climate and malaria variability have been identified. (a) The seasonality of malaria is bimodal with the seasonal peaks in malaria following two months after the rainfall peaks. (b) Temperature modulates the seasonality with higher values during cooler months. (c) Regions to the lee-side of the monsoon winds have lower malaria incidence during the South-West and North-East monsoons. (d) In some regions, malaria transmission is modulated by streamflow rather than rainfall.

Climate and Malaria Epidemics: Epidemics have been preceded by drought conditions. Epidemics coincided frequently during El Nino episodes up to 1927. This relationship has been affected by epochal changes in the ENSO-rainfall and ENSO-streamflow relationships over Sri Lanka.

Epochal Variation in Geography of Epidemics: Malaria epidemics were frequent in the West of the island during the turn of the 19th Century. Since then, the occurrence has been more preponderant in the East and North of the island. There is evidence that changes in climate have coincided with changes in this distribution. This is important as the rate of temperature change in Sri Lanka was identified at 1.7 °C/100 years – a rate which is considerably larger than the global average rate.

Monsoon, Topography and Climate: The monsoons depress malaria incidence in the windward side (excessive rainfall) and the leeward side (excessive temperature) of the central mountain massif that runs North-South. This influence of monsoon leads to an explanation of the preferential incidence in the South-East and North-West.

Malaria Incidence and Climatic Variables (Rainfall, Relative Humidity and Temperature): We have quantified the probabilistic nature of the relationship between malaria incidence and climatic variables. The probabilistic relationships can be used with the monitored and predicted climate to interpret malaria risk.

Malaria Risk Prediction: During the course of the project malaria risk predictions were provided to the AMC by IWMI based on seasonality and recent history. The quantifications of relationships can be incorporated into the early warning system that has been established by IWMI.

Climatic Suitability for Malaria Transmission: We have combined these probabilistic estimates to generate "climatic suitability" for malaria transmission maps. The climatic suitability maps identify the role of climate in modulating the spatial and seasonal distribution of malaria.

Dissemination: We have submitted 5 project reports to NOAA; published 6 peer-reviewed papers in journals and books; submitted 5 for review and another 7 are in a draft form with a few more in the pipeline. This work was presented on 8 occasions in US, and 6 occasions in Sri Lanka, Kenya and Maldives. A summary flyer was produced (Included in the Appendix). The work was presented in-depth in Sri Lanka at the project conclusion workshop (at IWMI) and the training workshop (at the Post-Graduate Institute for Science) in September 2007.

Education: Ten Columbia University students undertook directed research through this project. We obtained supplementary funding to support eight of these students through competitive awards from the Earth Institute, Cooperative Institute for Climate Applications Research and the NSF Research Experiences for Undergraduates (REU) programs all at Columbia University. One Master's and two Senior theses were completed.

Training: A training workshop was held at the end of the project in Sri Lanka. Two AMC officers were sent to the IRI for training for two weeks with funding from the Global Fund on Aids, Tuberculosis and Malaria (see letters in the Appendices). The material from this project is being included in the Health and Climate training course that is being developed at the IRI. The involvement of FECT and AMC staff in all stages of the project resulted in training for researchers in climatic, hydrological and malaria analysis. Two FECT staff members completed undergraduate programs and two followed post-graduate programs concurrently.

Institutional Relationships: We have been able to establish a relationship with IWMI through this project leading to institutional visits, exchange of products and further collaborative proposals. The partnership with the Anti-Malaria Campaign has been extensive with many meetings, two workshops, and frequent visits of IRI personnel. The AMC officer managing the malaria control program visited IRI in the early phase. The Foundation for Environment, Climate and Technology, which supported our work in Sri Lanka, has established capacity to research and education on climate and health related topics.

All the outcomes anticipated in our proposal have been delivered in large measure. This project has provided a unique demonstration of the use of practical new tools for climate variability and human health for risk predictions.



Picture: FECT Staff Members outside the inaugural workshop of the Climate and Malaria project at Passara, Uva Province on December 8, 2003. Left to Right: M.R.A. Siraj, I. Bandara, L. Zubair, S.B. Rajakaruna, Z. Yahiya, U. Tennakoon and J. Chandimala. Passara is in the highlands overlooking the plains of Moneragala which is in the background.

A. Acknowledgements

This project was conducted with a grant from the Climate Variability and Human Health program of NOAA. The program manager Juli Trtanj helped initiate this project and supported our work during the initial years. Aurelia Micko assisted with the program management and provided a comprehensive presentation as the commencement workshop. Juniper Neill served as program manager subsequently. Nancy Bellers-Sims thereafter assisted us until Claudia Neirenberg took over. Claudia has been supportive in the hectic final phase of this project. Bree Thompson helped us administratively throughout. We are thankful to them for their unstinting support, courtesy and understanding.

The partnership with the Anti-Malaria Campaign of Sri Lanka (AMC) has been extensive. Particular thanks are due to the Directors of the AMC, Dr. R.R.M.L. Siyamabalagoda and Dr. Rabindra Abeyasinghe for all the support that was provided including participation in the project conclusion workshop. H.M. Faizal, Regional Malaria Officer in the Uva Province, supported us in hosting our visits, enduring numerous queries, arranging interactions with his staff and Provincial health officials and presenting at the project conclusion workshop. We are also thankful to Regional Malaria Officers, Drs. Devika Perera, P. Kusumawathie and S.Bandara, for interactions in their respective districts. We also thank the other Regional Malaria Officers who participated through the project inception and conclusion workshops.

The Director-General of the IRI Stephen Zebiak has supported this effort from the outset and supported the commitment of IRI personnel to this project. Others in the Office of the Director General – Carolyn Mutter, Ann Binder, Lori Scally and Maria Salgado – have supported operations. Ann Binder and Lori Scally contributed extensively to the implementation of this grant and its financial management. Sandy Vitelli, Georgiana Aybar, Nancy Kurul, and Althea Salgado-Murillo assisted in several ways. Rise Rullon, Tricia Ramsey, and Francesco Fiondella assisted with the documentation. Brendon Hoch, Jeff Turmelle, Baaba Baiden, Jia Fang, Leo Ostwald, Brian Falk, Jussara Barone and Michael Derwin are acknowledged for computer support. Benno Blumenthal, Michael Bell, John del Corral and Emily Grover assisted with data management and analysis. Tony Barnston helped with interpretation of forecasts. Ousmane Ndiaye contributed to the work on downscaling. Brad Lyon, Anji Seth, and Chet Ropelewski contributed to climate diagnostics. Jian-Hua Qian implemented the regional climate model over Sri Lanka. The support of Roberto Lenton from the initial grant writing phase and in facilitating the relationship with IWMI has been pivotal.

Zeenas Yahiya, Shaky Sherpas, Francesco, Fiondella and Jason Rodriguez played a pivotal role in making this final report presentable.

Jeffrey Shaman, Marc Stieglitz and Mark Cane of Columbia University helped launch the project. Columbia University students Stacey Hirsh, Hyemin Yang, Lindsay Kaye Warren, Lady Vanessa Reyes, Nelun Fernando, Syd Partridge, Joseph Simonson, Arron Lyans, Daniel Bader, Sarah Wishnek and Shaky Sherpa participated in this project. Stephanie Pfirman and Martin Stute at Barnard College, Louise Rosen and Arezou Raeisghasem of the Earth Institute and Dallas Abbot of Lamont Doherty Earth Observatory and Yochanan Kushnir of Cooperative Institute for Climate Applications Research facilitated the work of the students.

We are grateful to Sarith Mahanama in the Global Modeling and Assimilation Office of NASA/GSFC who led the development of a fine scale land surface model for Sri Lanka with contributions from Rolf Riechle and Randal Koster. We thank Dilip Hensman from the World Health Organization in Sri Lanka for participating in the project workshops and assisting the GIS work.

Zeenas Yahiya and Janaki Chandimala supported this effort throughout the project at FECT. Manjula Siriwardhana, Upamala Tennakoon, Siraj Razick, Badra Nawarathna, Yoosuf Ashraj, Champika Jayatillake, Amal Tillakaratne, Amila Karunaratna and Ranmalee Bandara contributed over shorter periods. Vidhura Ralapanawe assisted us in the management of data bases, development of project presentation material such as posters and brochures and the project website.

Our work was supported by the Natural Resources Management Services (NRMS) from 2003-2004. We are particularly grateful to the Directors of NRMS, H.M. Manthrithillake, R. Herath and C.M. Madduma Bandara for their support. We thank A. Amarasekera, K.B. Jayasundera, P. Renuka and S.B. Rajakaruna for their assistance. The support of the Executive Director of the Mahaweli Authority of Sri Lanka's (MASL) River Basin Division, Eng. J.A.S.A. Jayasinghe, and the Director of the Headworks Division, Eng. Nimal Wickramaratne were indispensable since 2004. Messers. H. Herath Banda and A. Batcha of the MASL Headworks division and their staff have supported us at the FECT office in many ways. Mr. Kalyana Samarakoon of the Mahaweli Authority shared hydrological data with us.

We thank the Director-General of the Sri Lanka Department of Meteorology, G.H.P. Dharmaratne for his support particularly for addressing the project inception workshop, support in data acquisition and providing departmental support and participation in the project conclusion workshops. Messers. Lalith Chandrapala, S.B. Basnayake, G.B. Samarasinghe, K.R. Abeyasinghe, Ananda Perera and KHMS Premalal of the Department of Meteorology have assisted us. Dr. B.V.R. Punyawardene, agro-meteorologist at the Sri Lanka Department of Agriculture, assisted us in data collection.

We have obtained assistance at the University of Peradeniya for training programs for staff, obtaining meteorological data from observations and library records and support in the conduct of the final workshop. We thank Prof. T.D.M.A Samuel, Prof. P. Wickramagamage, Prof. Lakshman Dissanayake, Prof. Parakrama Karunaratne, Prof. Manel Wijesundera, Drs. U.R. Ratnayake, Rupika Rajakaruna, and Champika Bandara, for their assistance.

Finally, we record our appreciation to all the project team members from IWMI and their partners for the collaboration. The acting Director-General of IWMI, David Molden, supported this project starting from the proposal to the participation in the project conclusion workshop. Chalotte Fraiture, Theme Leader for Basin Water Management and Julie Van Der Bliet, Director of the Global Research Division assisted in the transition of the project. We thank them for their hospitality during our visits. We also thank the IWMI Principal Investigators, the late Dr. Felix Amerasinghe and Dr. Priyanie Amerasinghe for their role in ensuring a productive, mutual beneficial and enjoyable collaboration. Olivier Briet played an important role in this collaboration.

B. Project Team

Investigators

International Research Institute for Climate and Society, USA (IRI)
Stephen Connor (Ecologist and Epidemiologist)
Michael Neil Ward (Climate Scientist and Statistician)
Lareef Zubair (Climate and Adaptation Scientist, Environmental Engineer)

Columbia University, USA (IRI)
Jeffrey Shaman (Ecology and Hydrology, Presently at Oregon State Univ.)
Marc Stieglitz (Hydrologist, Presently at Georgia Institute of Technology)
Mark Cane (Climate and Environmental Scientist)

Anti-Malaria Campaign, Ministry of Health, Sri Lanka (AMC)
Gawrie NL Galappaththy (AMC – Consultant Physician)
DM Gunawardena (Disease Control Manager, On Leave at National Malaria Control Program, Eritrea and Uganda)
H.M. Faizal, Regional Malaria Officer (RMO), Moneragala District, Uva Province

Foundation for Environment, Climate and Technology, Sri Lanka
Upamala Tennakoon, (GIS operations)
Zeenas Yahiya (Documentation and Administration)
Janaki Chandimala (Hydrometeorological Analysis)
Manjula Siriwardhana (Climate Impact on Malaria)
International Water Management Institute, Sri Lanka (IWMI)
Felix Amerasinghe (Ecologist and Entomologist)
Priyanie Amerasinghe (Biomedical Research Scientist)
Olivier Briët (IWMI –Entomologist)
Lal Muthuwatta (Mathematical Modeler and GIS Analyst)

University of Sri Jayawardhenapura / University of Kelaniya, Sri Lanka
AR Wickremasinghe (Medical Doctor, Epidemiologist and Biostatistician)

Collaborators

International Research Institute for Climate and Society, USA
Michael Bell (IRI data library)
Ann Binder (Project Administration)
Benno Blumenthal (IRI data library)
John Del Corral (IRI data library)
Alessandra Giannini (Data Analysis)
Emily Grover-Kopec (IRI data library)
Ousmane Ndiaye (Downscaling)
Jian-Hua Qian (Regional Modeling)
Lori Scally (Project Administration)

Columbia University, USA
Stacey Hirsh (Senior, Earth Institute Internship)
Hyemin Yang (IRI Summer Intern - 2005, CICAR Summer Intern - 2006)
Lindsay Kaye Warren (Senior Thesis)
Lady Vanessa Reyes (Senior Thesis)
Nelun Fernando (Thesis, Masters in Climate and Society)

Syd Partridge (Summer Intern, Climate and Society Masters Course)
Joseph Simonson (Sophomore, Earth Institute Summer Intern)
Arron Lyans (Intern, Climate and Society Masters)
Daniel Bader (Intern, Climate and Society Masters)
Sarah Wishnek (Intern, Masters in Public Health)
Shaky Sherpa (Intern, Masters in Public Health)

Foundation for Environment, Climate and Technology, Sri Lanka

Siraj Razick (Information Technology)

Yoosuf Ashraj, (Data Management)

Vidhura Ralapanawe (Data Management and Web Support)

Badra Nawarathna (Rain fall monitoring)

Amal Thilakaratne (Data Management)

Amila Karunaratne (Web Management)

Champika Jayatillake (Data Management)

Anti-Malaria Campaign, Ministry of Health, Sri Lanka (AMC)

P.H.D. Kusumawathie, RMO, Kandy District, Central Province

Senarath Bandara, RMO, Kurunegala District, North-Western Province

National Aeronautical and Space Agency, Goddard Space Flight Centre,

Sarith Mahanama (Land Surface Modeling)

International Water Management Institute, Sri Lanka (IWMI)

Gayathree Jayasinghe (Biometrician)

Deeptha Wijerathna (Agricultural Economist)

Markandu Anputhas (Biometrician)

Susitha Wanigaratne (Intern)

C. Proposed Work Plan and Work Accomplished

The planned activities are extracted from the table included in the joint proposal. Note, that while the proposal was originally for 3 years, we completed work with a no-cost extension of an additional year.

Year 1

Activity	1	2	3	4	5	6	7	8	9	10	11	12
Workshop in Colombo												
Data collection- Uva province												
Data collection- Sri Lanka												
Hydrological modeling												
Downscaling climate forecasts												

Year 2

Activity	1	2	3	4	5	6	7	8	9	10	11	12
Climate & malaria relationships												
Development of statistical model (IRI/IWMI)												
Hydrological modeling (IRI)												
Development & establishment of early warning system												

Year 3

Activity	1	2	3	4	5	6	7	8	9	10	11	12
Malaria risk mapping (IWMI/IRI)												
Economic evaluation (IWMI)												
Forecast skill survey (IWMI)												
International workshop (IWMI/IRI)												
Publications and report writing												

The report from IWMI shall contain aspects not reported here including the operationalization of the early warning system, its economic evaluation and forecast skill survey.

MAIN REPORT

We describe our work in the sequence identified in the methodology in the proposal that the IRI was responsible for. These include:-

- Project Inception Workshop
- Data Collection
- Distribution of Malaria
- Climate Analysis
- Climate Monitoring
- Climate Predictions
- Hydrological Modeling
- Vulnerability Analysis
- Climate and Malaria Relationships in Sri Lanka
- Climate and Malaria Relationships in *Uva* Province
- Predictive Malaria Risk Mapping
- Workshops
- Publications and Dissemination
- Outcomes
- References

An appendix that provides the annual summaries of progress, the details of project visits and meetings, details of the inception, conclusion and training workshops, and the posters are included at the end of the report.



Picture: An abandoned gem pit in South-Eastern Uva Province has been left open leaving it as a site for mosquito breeding. In the background is new gem pit with excavated earth creating more breeding sites. This is compounded by additional breeding sites created by cattle, leaving hoof prints that collect temporary pools of water. Malaria control using larvivorous fish is being attempted by the Regional Malaria Officer (H.M. Faizal), who is seen looking for the fish.

1. Project Inception Workshop

Background

We collaborated with IWMI and AMC in the conduct of a project inception workshop in Sri Lanka during December 2003. The workshop was held in the provincial capital of the *Uva* Province that is to be the region of interest. This workshop was successful in bringing together all stakeholders in the *Uva* province as well as at the national level. The Agenda and List of Participants are included in the Appendix. The agencies that were represented at the highest levels were the Anti-Malaria Campaign Head Quarters and all Regional Malaria Offices in Sri Lanka, the Natural Resources Management Services of the *Mahaweli* Authority, *Uva* Management Training Institute, the *Uva* Provincial Directorate of Health, and the Sri Lanka Department of Meteorology. Ms. Aurelia Micko of NOAA/OGP attended this meeting and provided an overview of progress in climate and health activities globally. Relevant prior studies were presented and discussed.

Summary

The workshop participants emphasized that malaria in Sri Lanka is not related to weather (climate) alone, and that rural development (housing), land-use, hydrological interventions (such as irrigation), and above all malaria control interventions (parasite and vector) are factors to take into account when trying to attribute malaria epidemiology. Also, the vector component of the malaria transmission system should not be ignored. Participants emphasized that the suitability of sites for *Anopheles culicifacies* breeding varies according to their environmental conditions; therefore breeding relates differently to rainfall in different areas. In the dry zone, vector breeding may occur shortly after the onset of the *Maha* rainy season (September to December), whereas in the wet zone, drought in the rainy seasons may be conducive to vector breeding. Therefore, in time series analysis, the spatial component should not be ignored. We learnt that the AMC has excellent malaria records from the seventies onwards, but that older data has to be sought in the archives of AMC regional offices in *Kurunegala*, *Anuradhapura* and *Hambantota*.

There was agreement on the need for and utility of an early warning system and that this early warning system should be operational through the year. Participants also identified the need for a mechanism to coordinate and disseminate information for work related to climate and health among the different sectors.

2. Data Collection

Data Collection - Uva Province

Case data on Malaria

Uva Province consists of two districts, Badulla and Monaragala. Government institutions such as hospitals maintain monthly records of the number of examined patients (blood films) and slide-results. Before 1995, few cases were recorded at village spatial resolution. Therefore it was decided to restrict the temporal window for the high spatial resolution (Grama Niladhari or Village Officer - GN level) analysis to the period after 1995.

Meteorological and Hydrological data

The data collection and archiving in the Uva Province of hydrological and climatic data on a monthly scale is being undertaken in Sri Lanka. Monthly data have been collected as follows:

Monthly Rainfall for 18 stations for varying periods

Monthly (Mean, Minimum and Maximum) Temperature 5 stations

Streamflow data for 10 stations

Environmental data

A digital elevation model at a resolution of 90 meters generated by the NASA Shuttle Radar Topography Mission was obtained from the USGS websites.



Picture: The “Malaria Laboratory” at Buttala Hospital in the Uva Province in January 2006. All patients who are suspected of having malaria provide blood samples which are then examined on a slide by the technician (left) to identify the presence of the parasite. These results are tabulated daily and then collected by the regional malaria officer (right).

Socio-economic and Demographic data

Village (Grama Niladhari) level population and Socio-economic data from 1997 and 2003, and province-wise surveys have been acquired from the *Uva* Provincial Council, and missing data have been filled.

Data Collection – Island Wide (Sri Lanka)

Case Data on Malaria

Monthly positive malaria case data at District resolution have been digitized for the 1960 – 1972 period. For 1972 – 2003, malaria species-wise data have been entered at sub-district resolution.

Climate and Hydrological Data

Monthly data for 180 rainfall, 130 streamflow and 50 temperature stations have been compiled. Quality control of parts of these data sets has been completed. We have filled gaps in our rainfall records in the Uva Province. FECT has collected daily rainfall data the Uva. Climatological mapping of the data has been completed: Temperature (Minimum, Maximum and Mean) at 1 km resolution, Wind at 8 km, Solar Radiation at 20 km, and Rainfall at 10 km

Environmental data

We have obtained the 90-m resolution SRTM (elevation) data for Sri Lanka and NDVI at a resolution of 8-km was extended from 1981-2005 and was compared with rainfall, temperature and ENSO indices.

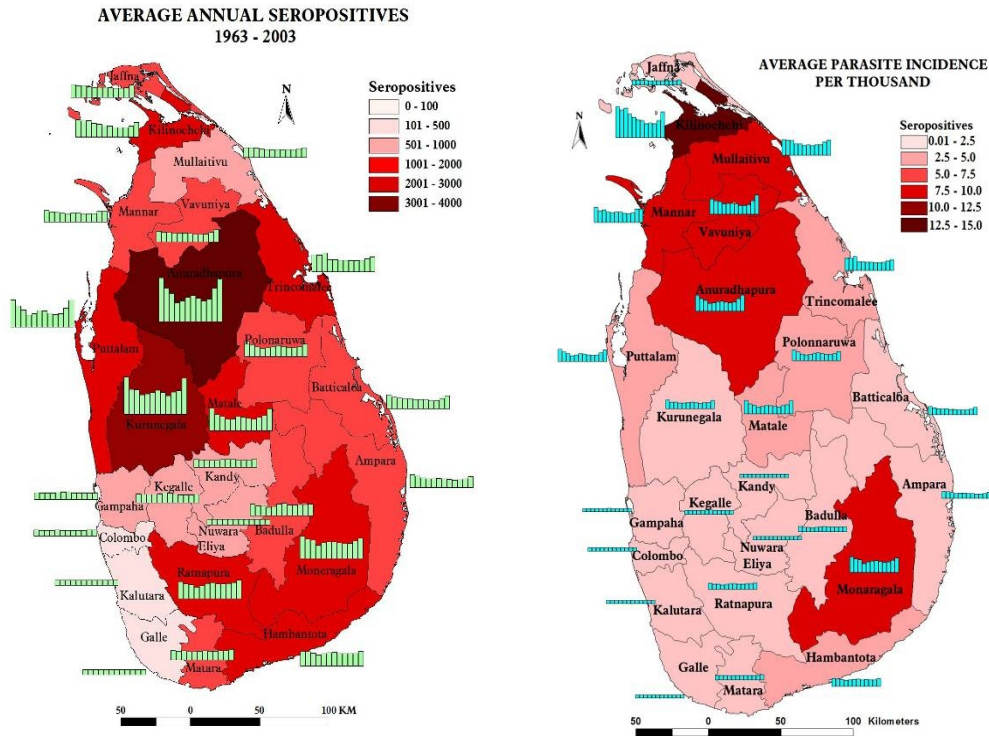
Socio-economic and Demographic data

Demographic data have been obtained from the Department of Census and Statistics and interpolated.

3. Distribution of Malaria

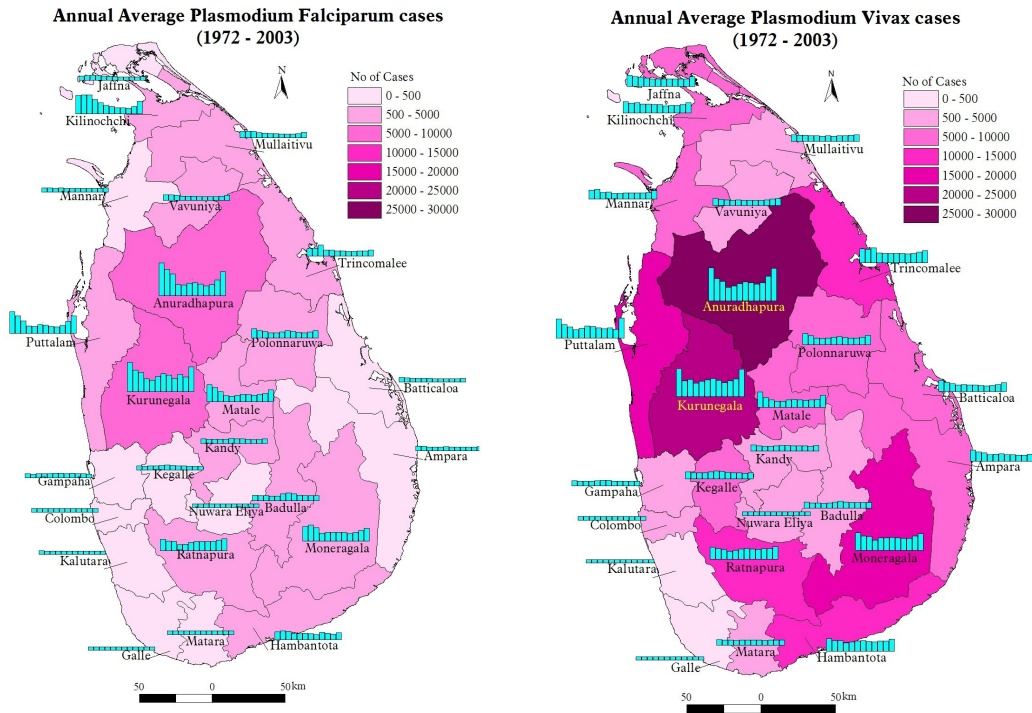
We have compiled a data base that allows spatio-temporal analysis. Some examples of annual and monthly mean estimates are shown below, and fine scale estimates along with hydrological features are provided in the maps.

Malaria incidence by District



Maps: The average regional distribution of malaria incidence for Sri Lanka was determined. The bar graphs show the monthly variation from January to December for each district.

District wise malaria data were used to construct an average monthly distribution on malaria incidence in total, and for the Plasmodium Vivax and Plasmodium Falciparum instances separately.

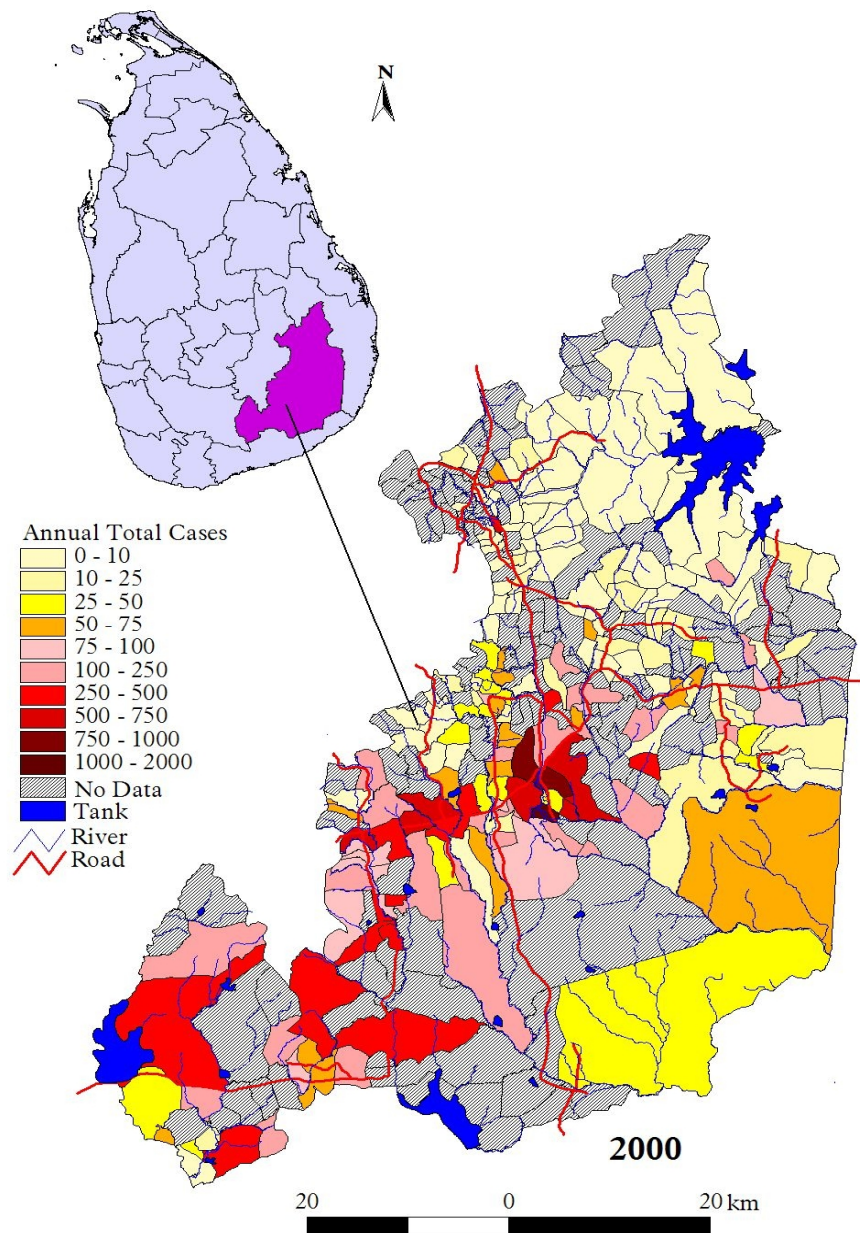


*Maps: Annual Average Cases of Malaria due to P. falciparum and P. vivax (FECT/AMC)
Left: P. falciparum, Right: P. Vivax. Bar charts show the monthly means from January to December.*

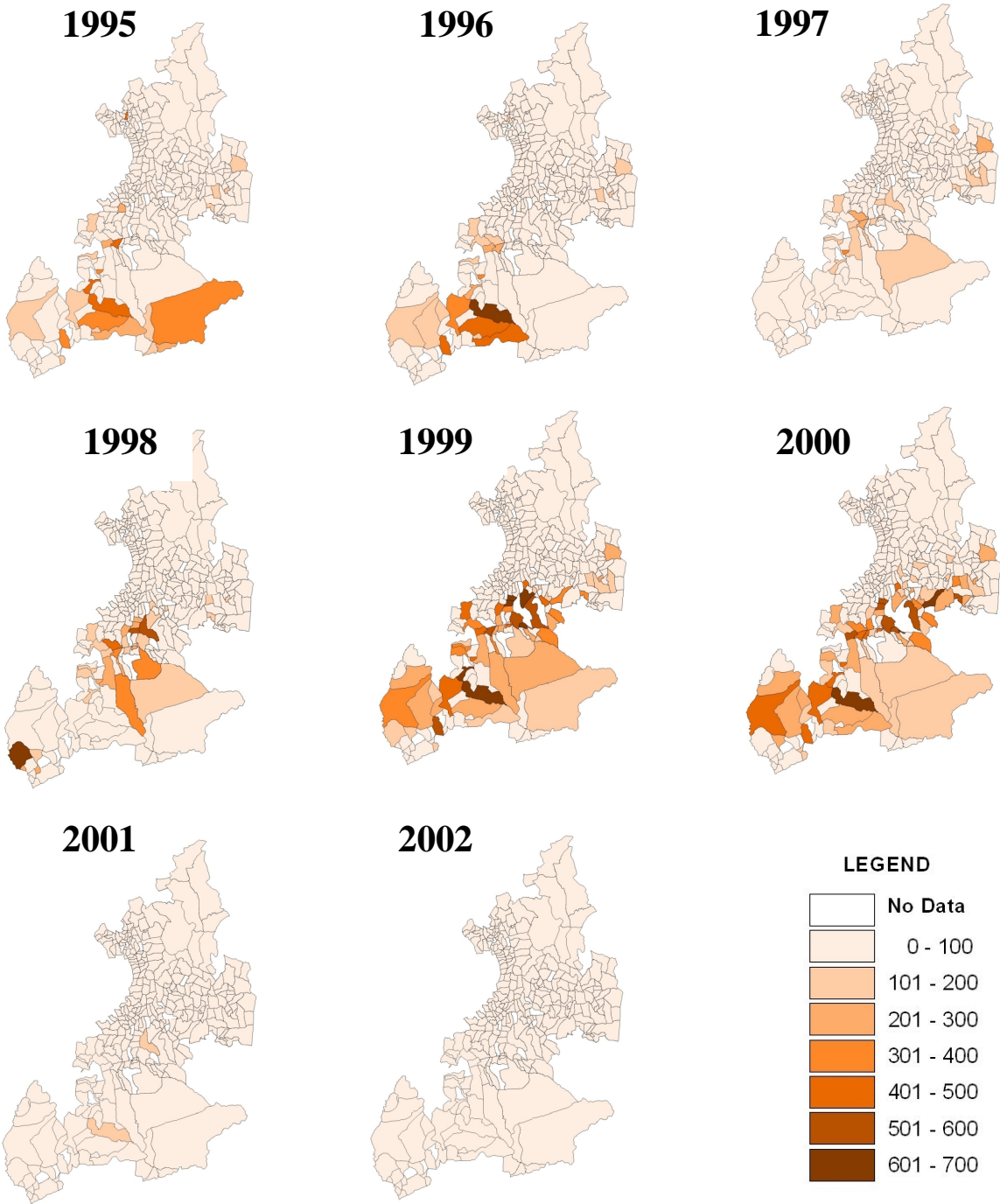


Picture: Maps at the Regional Malaria Office at Moneragala, Uva Province being pointed out by the Regional Malaria Officer in 2005. These include maps on land use, river networks and road networks in addition to malaria incidence. The data collected from the hospitals had been mapped at the Regional Malaria Office in Moneragala using GIS which was not working during the early part of the project. The GIS and email capability at the RMO office was updated and in-house training was provided to a technician at FECT.

Malaria incidence by Village for Moneragala District



Maps: Annual incidence of malaria by DSD division in the Moneragala district for 2000 is provided along with the principal roads, reservoirs and streams.



Maps: The year-by-year variation of malaria incidence in Moneragala from 1995 to 2002 at village resolution.

4. Climate Analysis

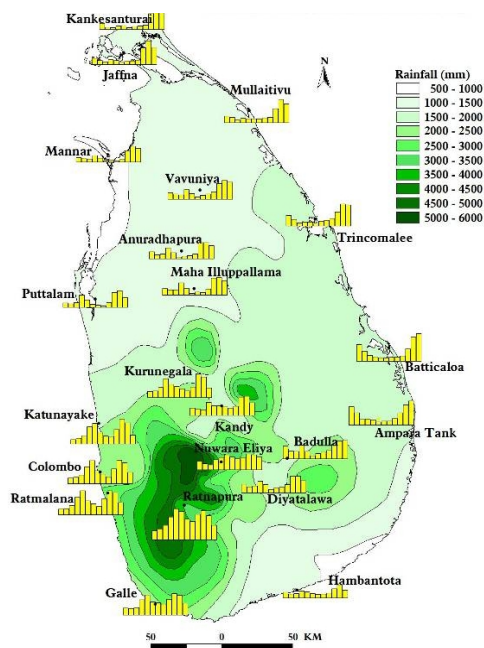
Rainfall, streamflow, temperature and humidity have been identified as the key meteorological variables that influence malaria transmission. The large-scale climate phenomenon ENSO and drought and flood conditions were also implicated in malaria transmission previously (Bouma and Van Der Kaay, 1996).

Quality control work on the climatic data sets was undertaken. These data were used to develop rainfall, temperature (mean, maximum and minimum), relative humidity, evaporation, solar radiation and NDVI climatologies. We conducted base line analysis on rainfall, temperature, evaporation and addressed the specific ways in which ENSO affects the environmental conditions in Sri Lanka. Both the climatologies and the ENSO influences are subject to decadal and epochal changes including climate change, which we have investigated. We have also estimated the spatial and decadal variations of climatic trends in Sri Lanka (Zubair et al., 2004d). The warming trends in temperature were found to be several times the global average. The rainfall trends were stable but there were significant declines in the hills during the summer seasons.

Climatological Analysis

We have constructed monthly, seasonal and annual climatologies at resolution as high as permitted by the data. The dense network of rainfall station allows for a high-resolution climatology of rainfall. We developed an interpolation technique that incorporates elevation for reconstructing regional temperature. The computation of solar radiation climatology was based on direct measurements of solar radiation and the use of daily sunshine hours to estimate regional radiation.

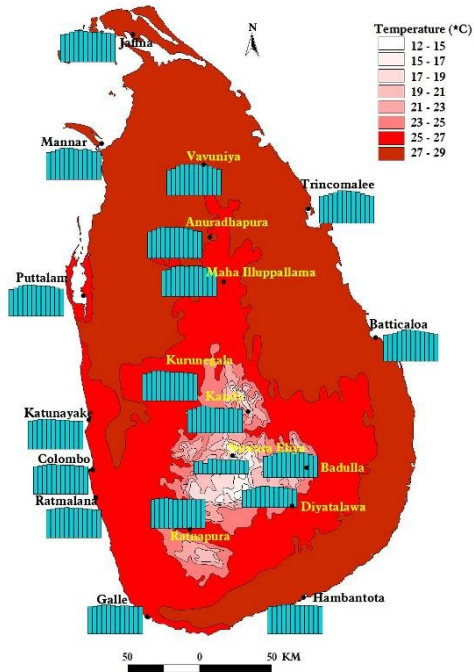
Climatology



The map shows the average annual rainfall observed at 179 stations from 1960 to 1990. The bar charts show the monthly means from January to December for the main stations.

Climatology of Rainfall

The island receives on average 1,800 mm of rainfall annually. The rainfall has a bimodal seasonality with peaks in November and May. The western and eastern hill slopes receive increased rainfall from May to October and December to February respectively. Storms and cyclones bring rain to the North-East around November.

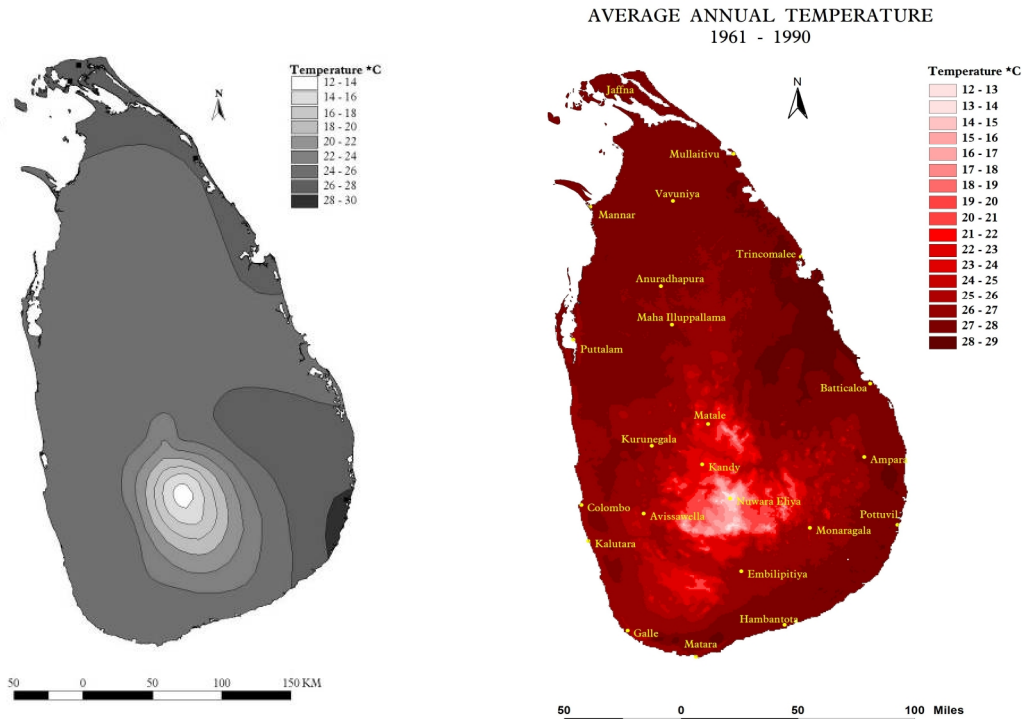


The map shows the annual mean temperature averaged from observations at 37 stations from 1960 to 1990. The bar charts show the monthly means from January to December for the main stations.

Climatology of Mean Temperature

The mean annual island-wide temperature is around 27°C with lower temperatures in the mountains that rise to 2,500 meters. Temperature drops during December and January and increases from April to September. The mean daily range is approximately 6°C.

Rainfall interpolation simply used an inverse distance procedure as there were adequate rainfall stations (300) particularly in the hilly areas. We have a more limited set of temperature data and the interpolation has to take account of topographic changes. We developed a precise temperature interpolation procedure using topography which leads to better interpolations as shown in the following maps.



Maps: Left: Simple spatial interpolation of the annual average station temperature for the whole island. Right: Topographically informed annual average temperature dimatology map for Sri Lanka.

Climate Variability Analysis

The influences of global modes of climatic variability such as El Niño/Southern Oscillation and Indian Ocean Dipole on the Sri Lanka climate were characterized (Zubair et al., 2008, Zubair and Ropelewski, 2006), and hydrology (Chandimala and Zubair, 2007; Zubair and Chandimala, 2006) have been systematically investigated.

Epochal Analysis

We have showed that there is epochal variability in how the ENSO influences affect rainfall and streamflow in Sri Lanka coinciding with the epochal changes in Malaria-ENSO relationships in the 1940's (Zubair and Chandimala, 2006) during the summer. This is a key finding which shall shape any climate based early warning system. We also showed that the relationship between Sri Lanka rainfall and ENSO during the fall has strengthened (Zubair and Ropelewski, 2006).

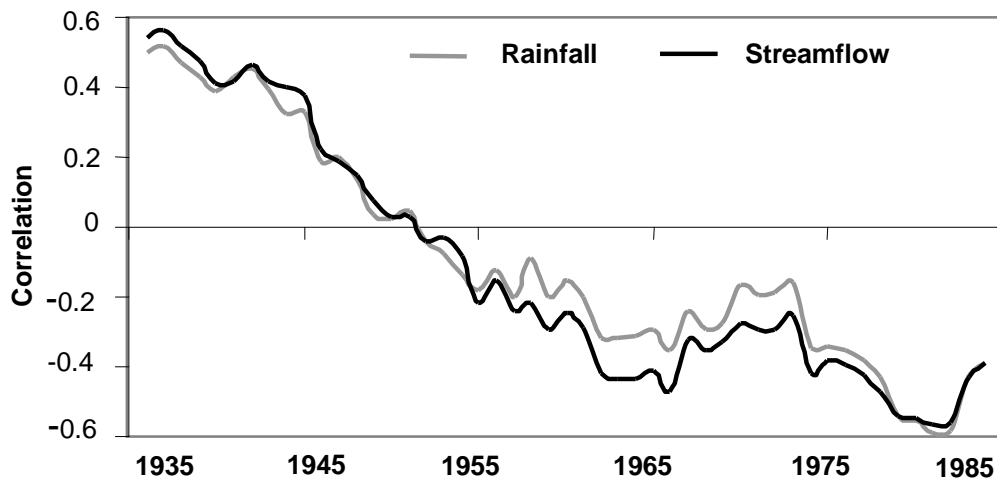


Figure: The 21-year sliding window correlation between the concurrent April to September streamflow, catchment rainfall and NINO3.4 is shown as a function of the central year of the window for the Kelani catchment. The 95% significance level is 0.42. This figure shows a dramatic reversal in ENSO relationships around 1940's reminiscent of an epochal change.

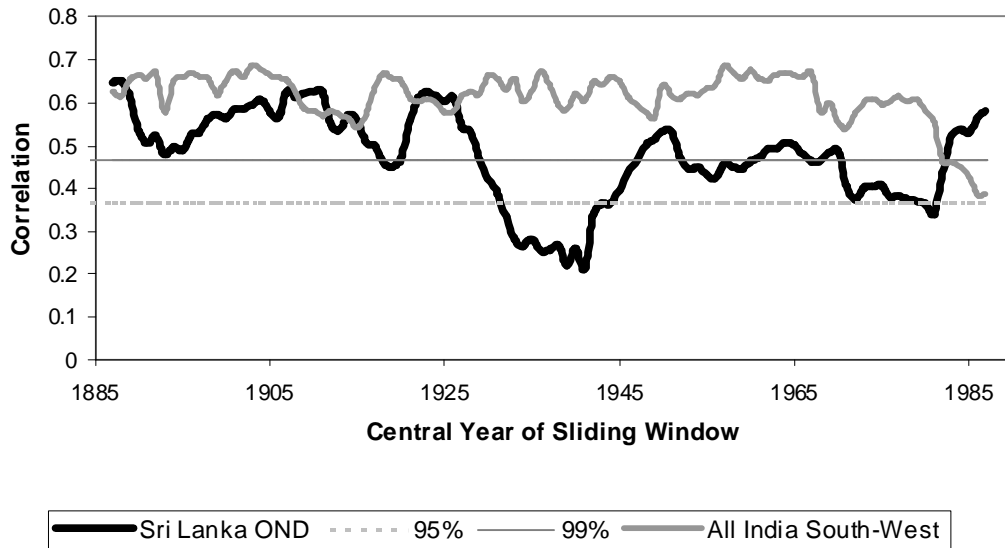


Figure: Sliding correlations with a 31-year window of NINO3 with simultaneous Sri Lankan, October to December rainfall is shown. A similar sliding correlation of All-India South-West Monsoon rainfall and simultaneous NINO3 is also shown with its sign changed to positive to facilitate comparison. Correlation values at 0.36 and 0.46 are significant at 95% and 99% levels and these thresholds are shown. This figure shows dramatic changes in how ENSO influenced the rainfall in Sri Lanka during the 1930's and then again after 1980.

Climate Change Analysis

We have undertaken analysis of changes in rainfall, minimum, maximum, mean temperature and streamflow.

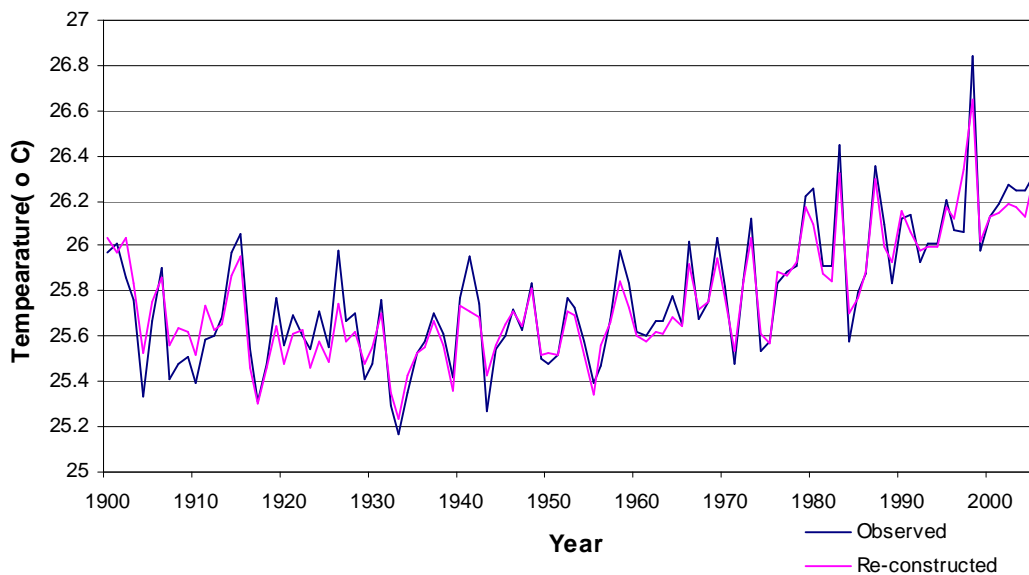


Figure: Mean annual temperature in Sri Lanka. The line in red shows the estimated mean based on quality controlled data. The blue line shows the mean of the observations. The trends since 1960 have been characterized regionally and seasonally for mean, minimum, maximum temperature and rainfall.

5. Climate Monitoring

Provision of timely malaria risk assessments based on rainfall requires a near-real-time estimation of rainfall and associated variables. We developed methodologies for estimating rainfall in near real time initially based on satellite estimates as made available by the CPC.

Clickable Map for Rainfall Summaries

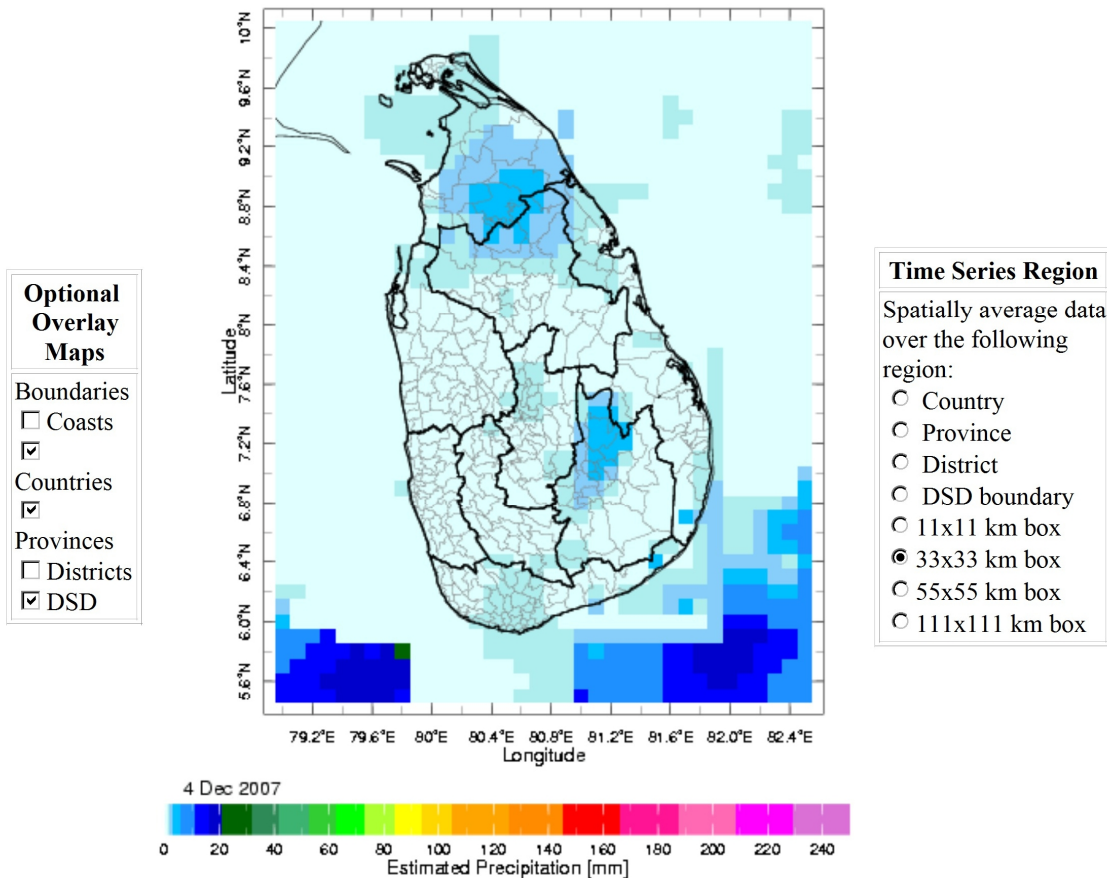
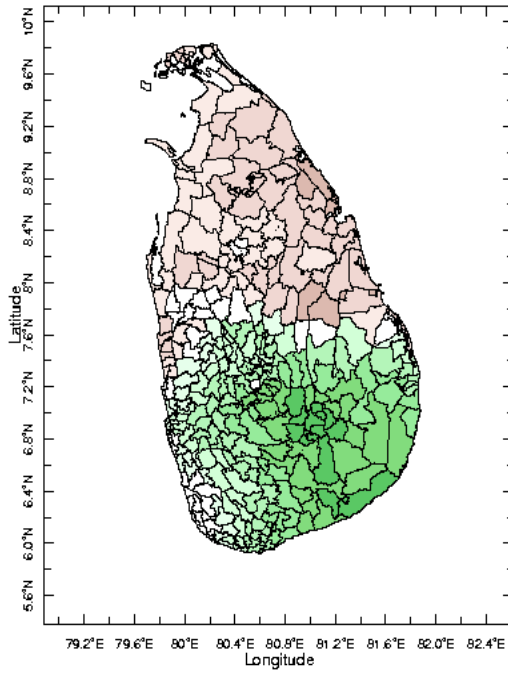
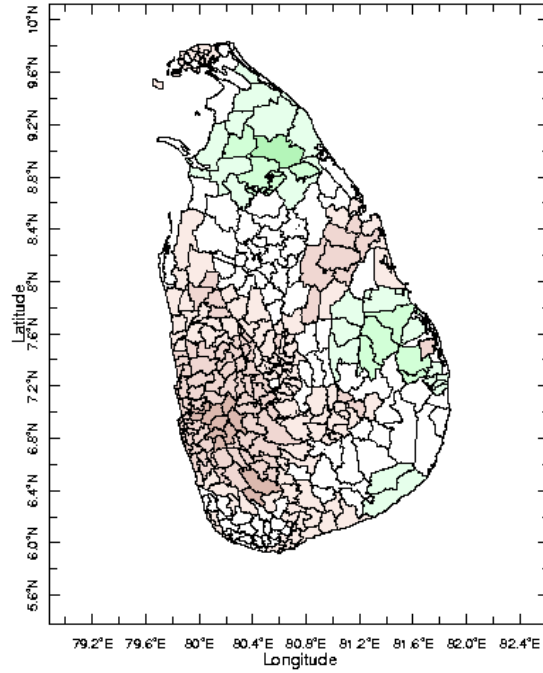


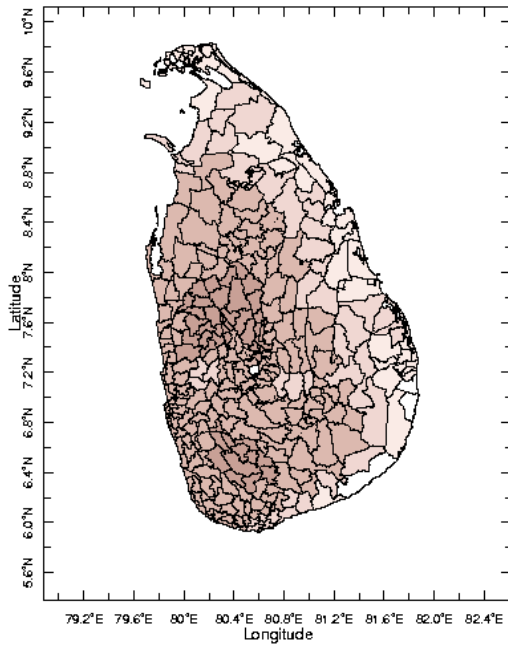
Figure: Rainfall Monitoring for Sri Lanka (IRI/FECT). An online resource for malaria managers to obtain rainfall estimates in near real time in multiple formats at fine scales was developed with data from NOAA CPC. This site is temporarily at: <http://ingrid.ldeo.columbia.edu/expert/home/.mbell/.SL/.Regional/.Rainfall/>



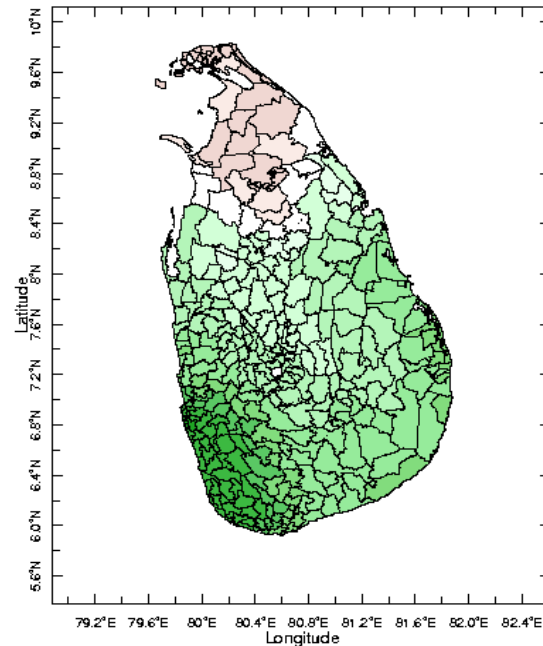
Jan 2007



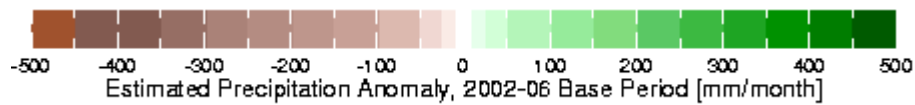
Feb 2007



Mar 2007



Apr 2007

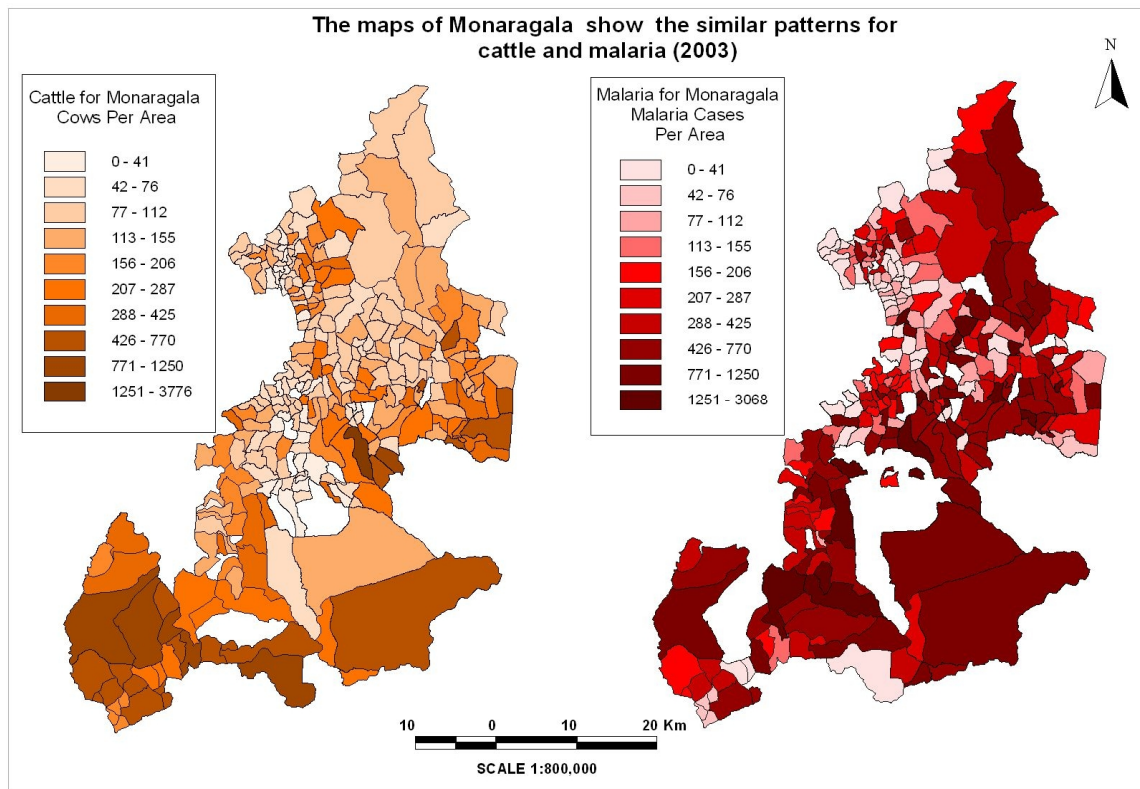


Maps: Fine-scale monitoring of rainfall anomalies at fine spatial scales has been developed using observed rainfall and satellite estimates. The departures from mean values are estimated for each sub-district unit. Shown in this set of figures and next page are estimates for January to April 2007.

6. Vulnerability Analysis

In addition to year to year variation in risk due to climatic, environmental and ecological factors, the vulnerability of the people in question and their exposure to malaria plays a determinative role in whether the malaria risk is translated into actual incidence. Usually estimating vulnerability is more challenging than estimating hazard due to the paucity of relevant data. We have reported on preliminary analyses.

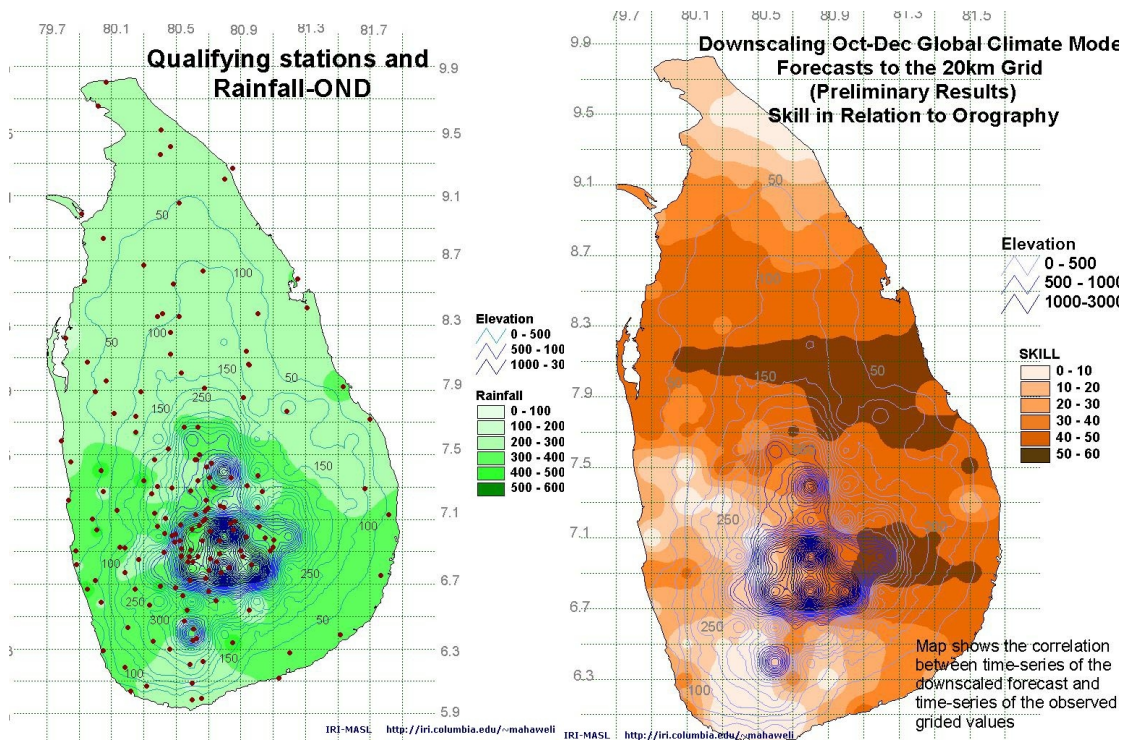
A variety of vulnerability factors may be considered such as education, house types, distance to water bodies, economic status and occupation types. While some analysis has been carried out on these factors, it is the correlation of malaria incidence with cattle density that stands out for both Badulla and Moneragala districts.



Maps: Left – Density of cattle in Moneragala District. Right – Incidence of Malaria in Moneragala District.

7. Downscaling Climate Predictions

We have refined and archived downscaled statistical rainfall predictions for Sri Lanka for the October to December season for the period 1960 to 2000 at a resolution of 10 km (Zubair *et al.*, 2004b). Dr. Joshua Qian of the IRI collaborated to develop a regional climate model focused on Sri Lanka (Qian and Zubair, 2009). This work complements the statistical downscaling as it enables the investigation of key mechanisms.



Maps: Left - Stations used, the mean rainfall during October to December, the 20-km grid and the topographic contours are shown. Right: The skill of the downscaling scheme that was shown is represented as a correlation score at right. The correlation skill ranges up to 0.6. The topographic contours are shown as well.

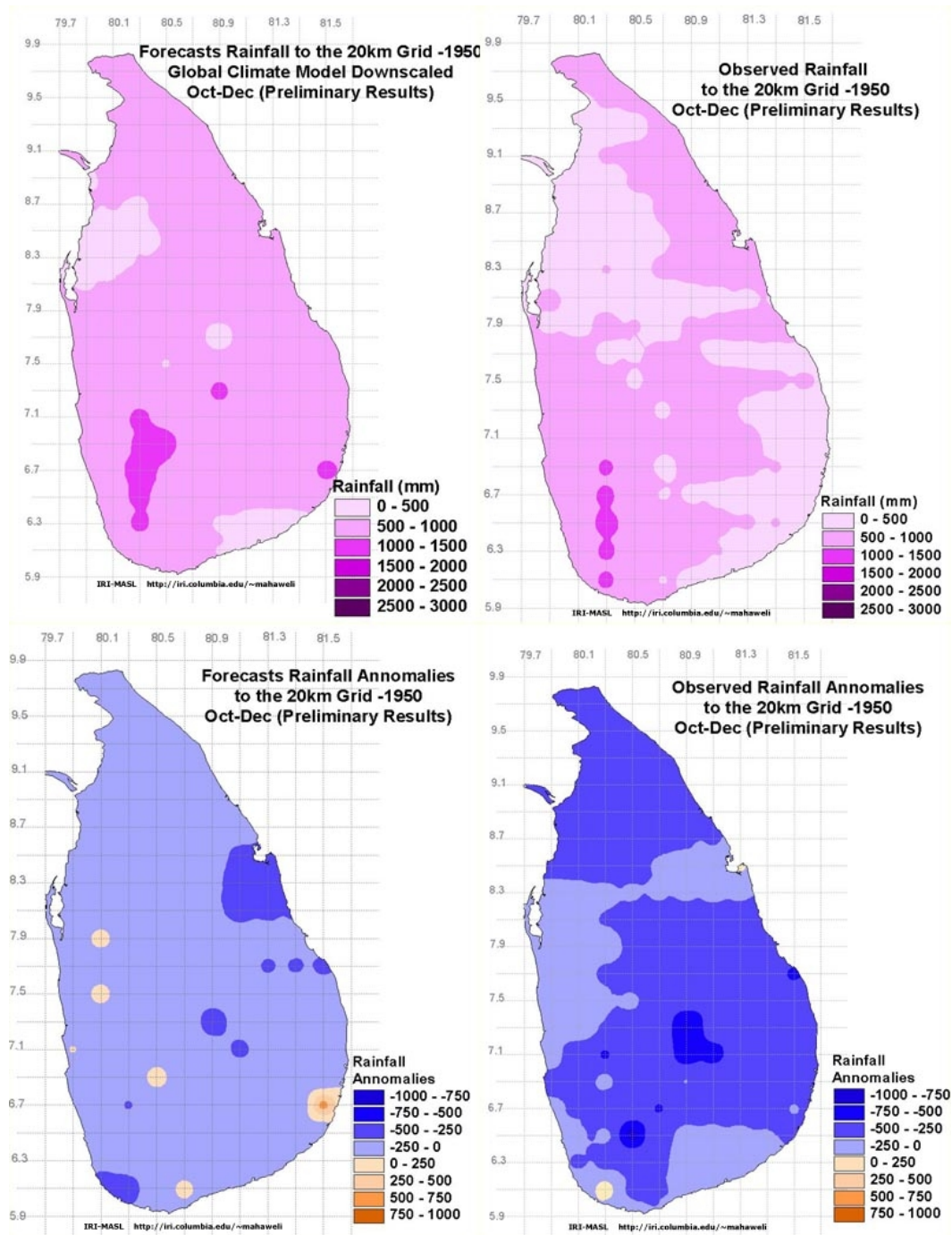


Figure Example of downscaled rainfall predictions for Sri Lanka for October to December season in 1950 (left) and Corresponding Observations (right). Predictions and Observations are shown as - Top row: Total Rainfall, Bottom row: Rainfall Anomalies.

8. Hydrological Modeling

We generated in-situ seasonal streamflow predictions for Sri Lanka, and implemented a state of the art land surface model in collaboration with the Land Surface Modeling group at NASA GSFC.

Seasonal Streamflow Predictions

While model based predictions are useful in generating fine scale results, in-situ predictions of variables such as streamflow may be obtained using statistical relationships between sea surface temperature which is a primary driver of climate and the streamflow histories. Our work on streamflow analysis for Sri Lanka has included diagnostics of streamflow variability and modeling of streamflow from rainfall (Chandimala and Zubair, 2006) providing the potential for future seasonal predictions of streamflow from global sea surface temperatures using canonical correlation analysis.

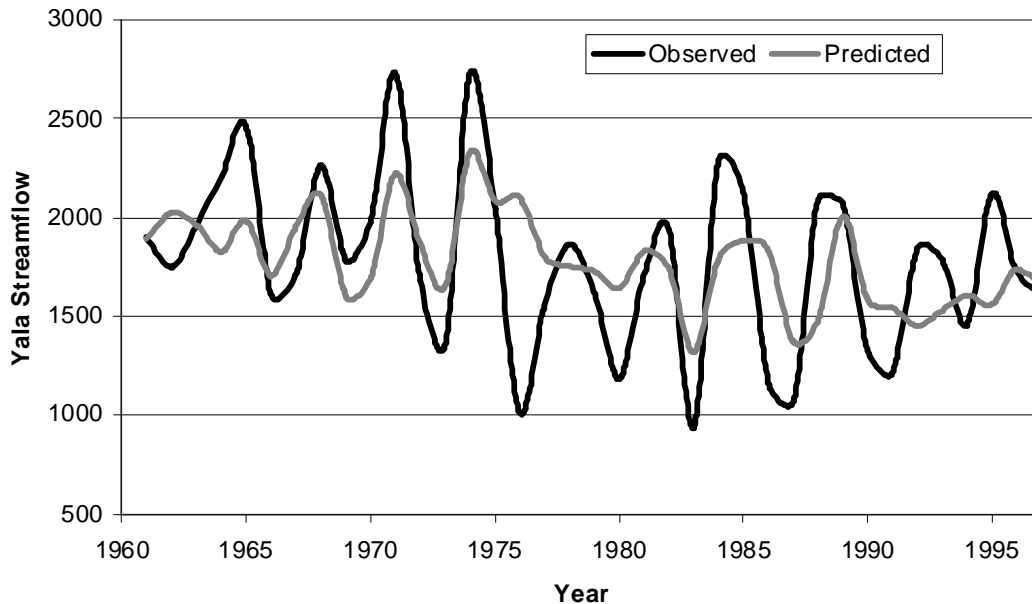


Figure: The prediction of the Yala season (April to September) streamflow at Glencourse streamflow in cross-validated mode based on the leading principal component of the sea surface temperatures in the Indian and Pacific Oceans (Chandimala and Zubair; 2006).

Catchment Land Surface Modeling

The hydrological work is motivated by reports of relationships between malaria incidence and variations in streamflow and soil moisture. We have progressed well with our hydrological modeling work resulting in the generation of streamflow and soil moisture estimates. A state of the art Land Surface Model (LSM) was implemented with the support of the NASA-Goddard Space Flight Centre-Global Modeling and Assimilation Office Land Surface Modeling Group (Mahanama *et al.*, 2008). This model is implemented at present using a DEM at a 1-km resolution with parameters based on the Hydro-1K ensemble of the USGS. The meteorological forcings are obtained from the ECMWF re-analyses data set which has been adjusted to obtain realistic hydrology. Thereafter it was nudged further with the 0.25 degree monthly rainfall and temperature observations over Sri Lanka. Tests show good performance in the simulation of monthly rainfall.

This model is capable of generating the streamflow estimates that are needed at the fine scales required to capture the spatial variations in malaria incidence in Sri Lanka. The model diurnal temperature climatology compared well with observations at 17 stations. The streamflow estimates were compared with observations at 10 stations in different rivers and these were of adequate quality. The streamflow prediction and observation for one station (Peradeniya) is shown below (Mahanama et al., 2008).

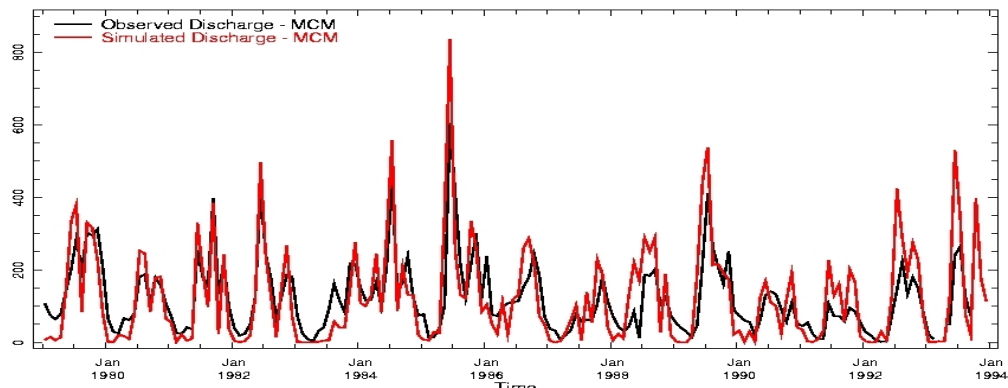


Figure Right: Observed and Simulated Discharge at Peradeniya on the Mahaweli River which is to the upstream of the Mahaweli. The simulation shows good fidelity to the observed records.

Malaria incidence has been related to river margin pooling as well as pooling due to rainfall in depressions. If accurate soil moisture estimates are available it shall be possible to estimate the distribution of inundated areas which are favorable for larvae survivorship. The Land Surface Model has now been developed well enough to generate soil moisture. The seasonal soil moisture pattern as generated by the model implemented on 768 tiles over Sri Lanka is shown. This model shall be refined further to obtain soil moisture estimates at DSD levels.



Picture H.M. Faizal, Regional Malaria Officer, Moneragala District, in front of potential mosquito breeding sites in his district in January 2006. Stagnant water bodies created by open-pit gem mining (background) and cattle hoof depressions (foreground) create conditions for mosquito breeding. Larvivorous fish varieties were deployed at this pit as a control measure. Soil moisture mapping enables us to identify locations where there shall be at least a film of water on the surface.

Top-model Implementation

The basic top-model Land Surface Model (LSM) formulation which does not consider energy budgets is a simpler option for hydrological modeling than the catchment LSM. Two small catchments for model calibration on two tributaries of the Mahaweli, one in the Uva Province and one in a Mahaweli sub-catchment in the Central Province were selected for model calibration based on the availability of diurnal streamflow data. A map of the Uva site, Upper Uma Oya or Bomurella catchment is shown below.

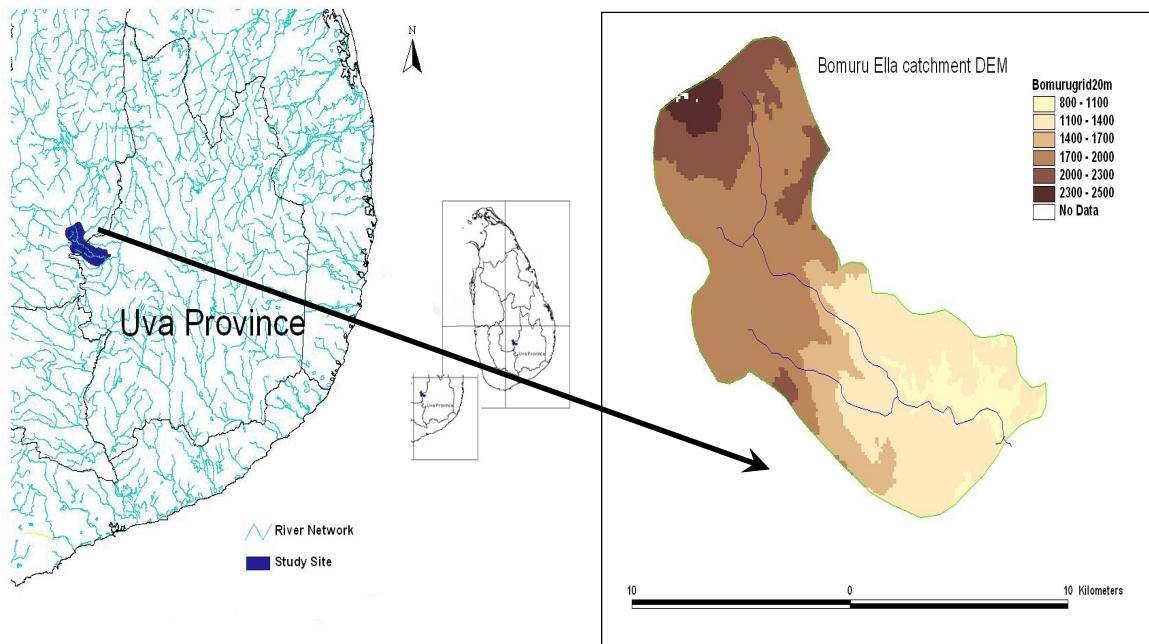


Figure: The location of the site, the river network is shown in the top panel. At bottom, the digital elevation model of the upper Uma Oya catchment of the Mahaweli river that was used in the calibration is shown.

It is important to model the diurnal variation correctly in order to reproduce environmental conditions. To this end, we were fortunate in obtaining the support of Mr. Kalyana Samarakoon of the Mahaweli Authority of Sri Lanka, who has been collecting diurnal data on streamflow for a study of sedimentation in the Uma Oya tributary of the Mahaweli River that flows into the Uva Province; and Prof. Samuel, who directs the Solar Research Laboratory at the University of Peradeniya, who has recorded diurnal solar radiation, humidity and wind profiles for Talawakelle for several years for studies on agro-meteorological impacts on tea production. Other data needed such as solar radiation, wind, topography and land surface have been approximated.

9. Climate and Malaria Relationships

We undertook an analysis of the relationships of malaria incidence with hydro-meteorological variables such as rainfall, streamflow, temperature and humidity and analyzed the seasonality, trends, spatial distribution and statistical relationships between malaria epidemics and rainfall, and streamflow anomalies. These are described below.

Seasonality of Malaria

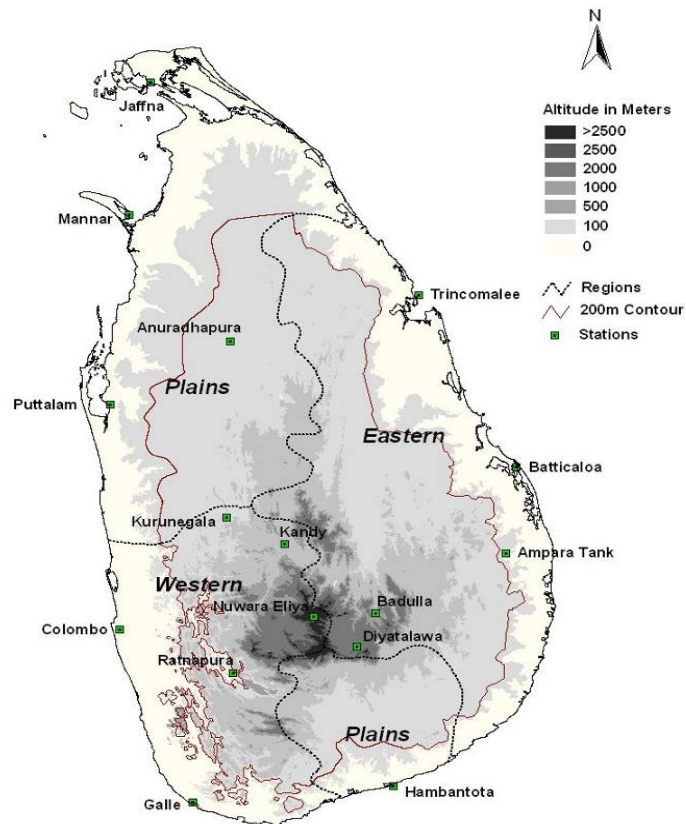


Figure: The regionalization of Sri Lanka used in our analysis is shown along with the topography and Department of Meteorology rainfall stations. The 200 m contour that separates the low areas from the hilly areas is indicated as thin contours.

The regional character of the malaria distribution is brought out in relation to topography by considering the four climatically homogenous regions – Eastern, Western, Northern and Southern Plains. The Eastern and Western regions are further subdivided into the Eastern and Western coasts and hills. This classification makes sense from the point of view of the monsoonal wind directions (North-Easterly and Westerly) which lead to enhancement of rainfall on the Eastern and Western hill slopes during the respective monsoon seasons.

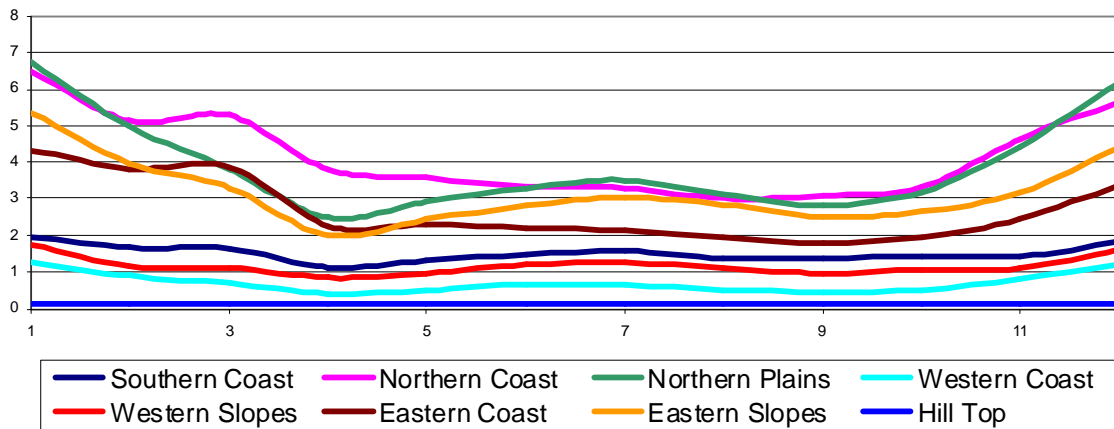
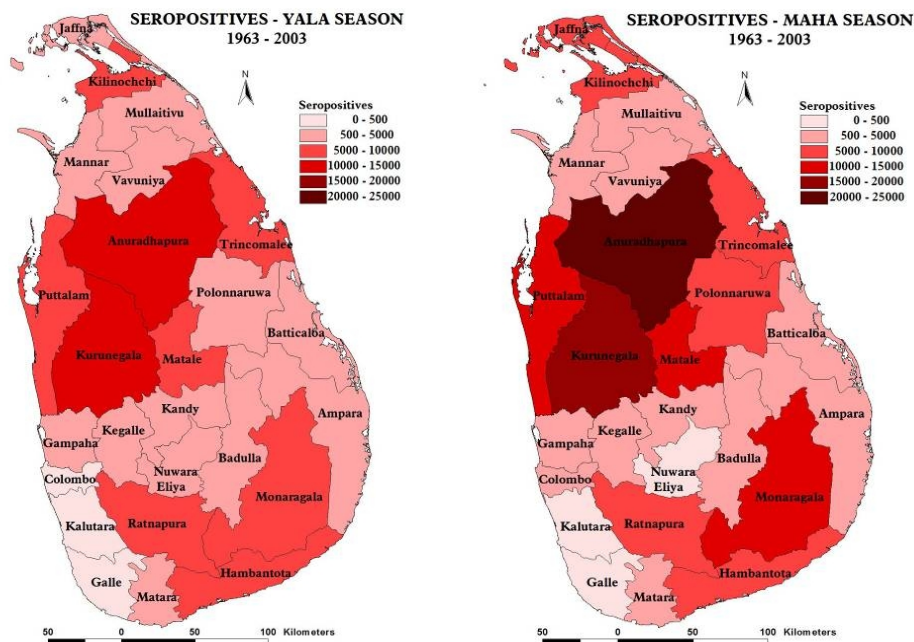


Chart: The monthly average malaria incidence in the different dimatically homogenous regions for January to December over a recent 40 year period. Clear differences in the different regions are seen.

Rainfall climate as well as malaria incidence in Sri Lanka is largely bimodal. The agricultural seasons Yala (April to September) and Maha (October to December) capture the bimodality of rainfall with rainfall during the early part of the season followed by dry period towards the end. Malaria incidence follows two months after the rainy season and it is possible to use the agricultural seasons to capture the two main modes of malaria incidence.

Seasonal maps for both seasons show similarities and some important differences. Overall the Maha incidence is largely greater than the Yala incidence. The malaria incidence is particularly enhanced in Maha in the regions to the North, whereas regions to the South have comparable malaria incidence in both seasons.



Maps: The malaria incidence show the regional distribution of malaria during Yala (April to September) and Maha (October to December).

Inter-Annual Variation of Malaria Incidence and El Nino

Previous work (Bouma and Van Der Kaay, 1996) suggested a strong link between malaria epidemics in Sri Lanka and El Nino events from 1880 to 1945. The above analysis shows that the validity of this claim relies on a particular designation of El Nino episodes – the use of contemporary definitions of El Nino episodes results in a weaker result than previously reported. In addition, this relationship does not hold after 1950 as it did prior to 1950.

The table below summarizes the occurrences of epidemics in relation to El Nino years based on contemporary data. The disparity of likelihood of epidemics during El Nino years and that during non-El Nino years was not statistically significant.

	Epidemic years	Non-epidemic years	Total
El Nino years	7	26	33
Non-Nino years	13	92	105
Total	20	118	138

Table: Epidemic years in Sri Lanka in relation to the El Nino years between the time periods of 1861 and 1999.

We investigated whether this breakdown was due to an epochal change in the relationship of ENSO and rainfall over Sri Lanka that occurred around 1950 (Zubair and Chandimala, 2007). The insecticide based control program put in place in the early fifties may also have played an important role in disturbing the “natural” relationship between epidemics in malaria and climate variation.

The particulars of El Nino relationships with Sri Lankan rainfall are complex and dependent on spatial and epochal details. Indeed, the El Nino’s influences have come in different flavors in different years as also has been the case with the character of the epidemics. A more comprehensive analysis of El Nino events, its impacts on climate, and the relationship with morbidity and mortality were published (Zubair et al., 2008, Zubair and Ropelewski, 2006). Bouma and Van Der Kaay, 1996 proposed that ENSO forecasts could serve as an early warning system for Sri Lanka. We examine this relationship by plotting the mean annual ENSO index (NINO34) in relation to years in which there were epidemics.

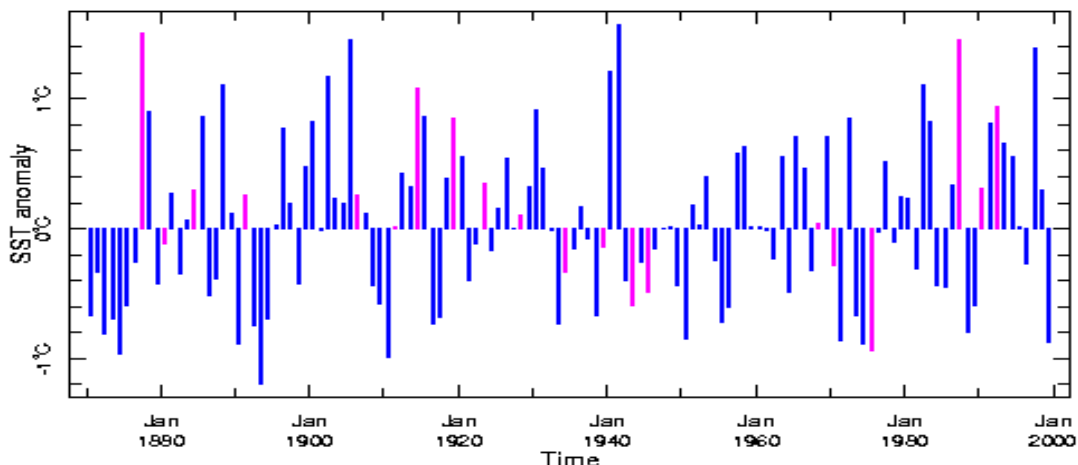
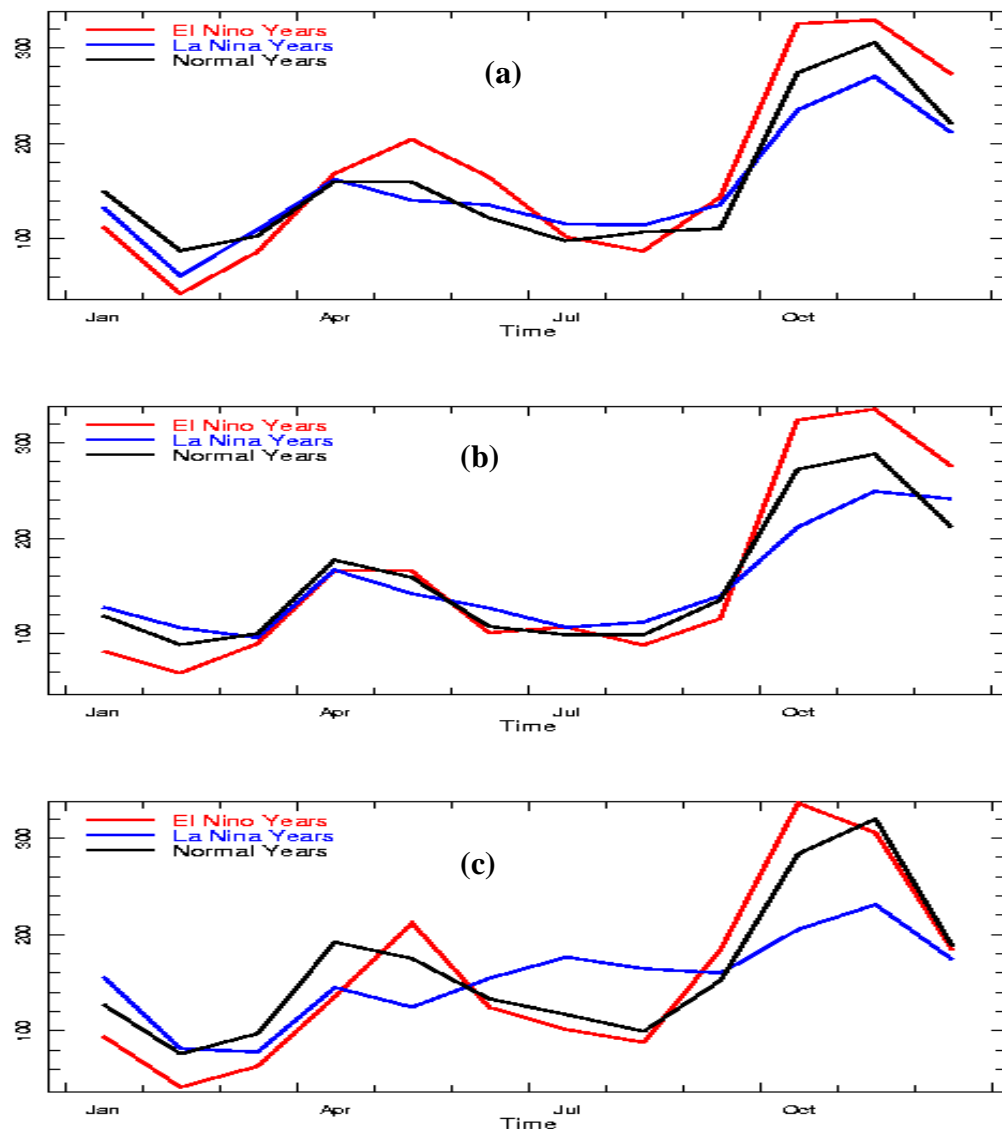


Figure: Epidemic years are identified in red on a time series of annual NINO34 which is an index of ENSO. NINO34 values above 0.5 may be taken as El Niño events. It is plausible that even if the value is not about 0.5 in a particular year, it may well have been above this value for part of the year. The years in which epidemics occurred are marked in red. This figure shows that usually Epidemics occurred during periods of warm ENSO indices up to 1930's and after 1980's. In the intervening period, epidemics were more likely if at all during cold ENSO events.

The epidemic years (red bars) did not coincide with “El Niño years” in a statistical significant manner. In addition, any such relationship is inverted from 1940-1980. We are not convinced that the control program put in place in the early fifties led to the disturbing of this relationship.

Our analysis shows that the use of El Niño episodes to predict malaria episodes as suggested previously requires an explanation as to why the relationships inverted from 1940 to 1980. Rainfall, streamflow and temperature are influenced by El Niño / southern oscillation (ENSO) phenomenon. An examination of the monthly rainfall patterns during different ENSO extremes is shown below for the period before 1945, between 1945 and 1985, and after 1985.

ENSO and Malaria Incidence



Figures: a) Monthly average rainfall in Sri Lanka from 1869 to 1945 during all years, during El Niño years and during La Niña years. b) Monthly average rainfall in Sri Lanka from 1946 to 1985 during all years, during El Niño years and during La Niña years. c) Monthly average rainfall in Sri Lanka from 1986 to 2003 during all years, during El Niño years and during La Niña years.

This analysis shows that rainfall during El Nino events was enhanced during wet periods and diminished during dry periods prior to 1945 and after 1985. This is in keeping with the patterns expected during high morbidity years. These dramatic changes may be due to an epochal change in the relationship of ENSO and rainfall over Sri Lanka that occurred around 1940 (Zubair and Chandimala, 2006) and around 1980 (Zubair and Ropelewski, 2006).

Relationships between Streamflow and Malaria Incidence

Previous works cite the relationship between epidemics and variations in streamflow (e.g. Visvalingam, 1961). We have constructed composites of streamflow for epidemic years for the Kelani River which is located in south-west. The pattern of malaria dynamics is known to differ in this region when compared with that in the rest of the island. The prevalence in this region has also been reduced in recent decades. However, this is a basin with long records that had been the locus of severe epidemics before 1950.

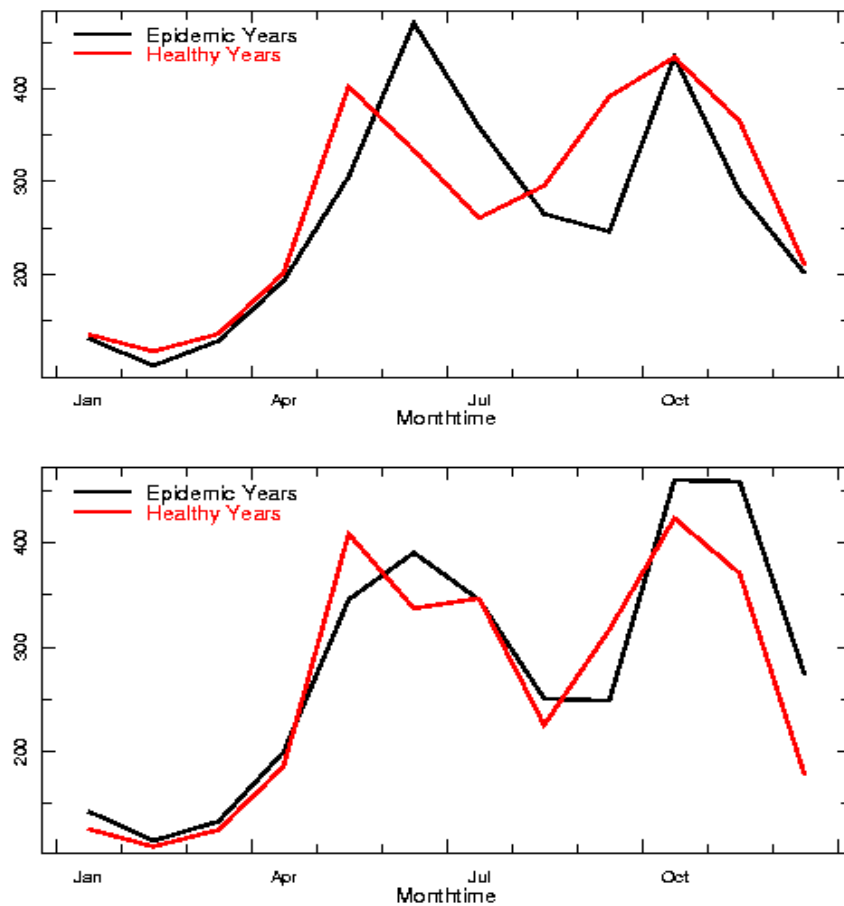


Figure: The average streamflow in the Kelani River during peak epidemic years (black line) and years in which there was the least malaria (red line) are compared for the year before the epidemic (top) and the year of the epidemic (bottom).

There is a deficit in streamflow during the October to December season preceding an epidemic year. Such a deficit was also found in the records of the *Gin Ganga* River in the South-West. Further work shall examine such diagnostic for other rivers. Such a deficit if confirmed is a potential precursor of malaria risk. Our work is ongoing and we shall seek to understand the island-wide variation of streamflow and its relationship to epidemicity and report on it (Zubair *et al.*, 2005e).

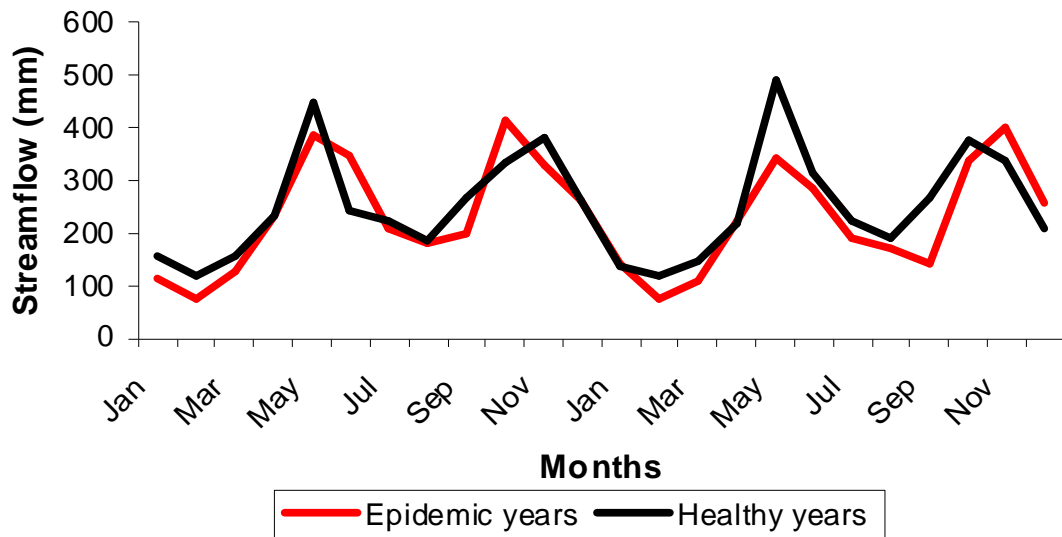


Figure: The average streamflow in Gin Ganga River during years in peak epidemic years (red line) and years in which there was the least malaria (black line) are compared starting before the epidemic into the year where the epidemic was reported.

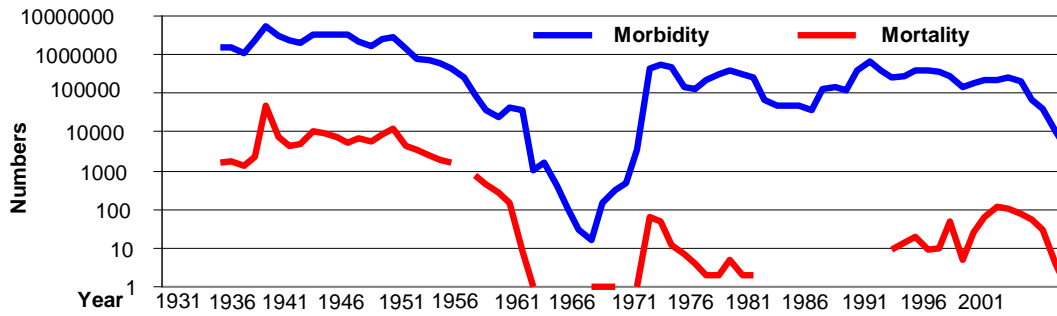
In general, the rainfall and streamflow during years of high malaria incidence may be characterized as higher flows during wet seasons and lower flows during the dry seasons. Extended dry periods leading up to September has lead to increased malaria risk.



Picture: Menik Ganga (river) which is often a locus for malaria outbreaks in the Uva province in January 2006 when the river has its seasonal high flow. During dry seasons, the streamflow declines leaving pools in the riverbed favorable for mosquito breeding

Epochal Change in Incidence and Distribution of Malaria

An examination of the historical record shows that the incidence of malaria is seen to have undergone dramatic changes in prevalence during the 1930's, 1960's, 1980's and 2000's.



Graph: Annual island-wide morbidity and mortality due to Malaria from 1931 to 2002.

There have also been dramatic changes in the regional prevalence of epidemics as shown in the maps below. These changes have coincided with changes in the control program. For instance, in the 1930's environmental control programs were in use and thereafter in 1947 DDT was used widely resulting in the near elimination of malaria around the late 1960's. After the re-emergence of malaria in 1968 malathion was sprayed and DDT was phased out. Other insecticides including fenitrothion and lambda-cyhalothrin were sprayed thereafter. The introduction of artemisinin based insecticides has again led to a dramatic drop in malaria incidence after 2000.

Environmental factors are also important contributors to malaria control. For instance, larviciding of stagnant pools with diesel and construction of buffer dams to prevent pooling were undertaken in the first half of the century as control measures. Settlement of immunity less migrant population continued through large land settlement projects in malarious areas from 1950's with the Gal Oya scheme in the South-East to the Mahaweli Development scheme in the 1980's. Of late, environmental control has re-emerged as a means of vector control. In all this however, the epochal change in climate may also be implicated in changes in the intensity and distribution of malaria.

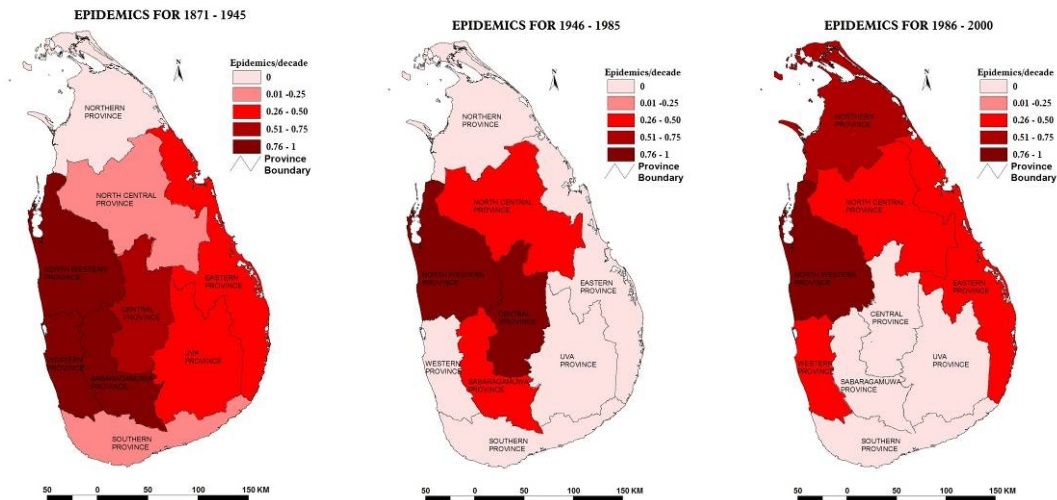


Figure: The relative spatial frequency of epidemics in three epochs (from L-R 1871-1945, 1946-1986, 1986-2000) period. The prevalence of epidemics has shifted from the Western and Sabaragamuwa Provinces to North-East. The relationship between malaria epidemics and El Niño which broke down from 1946 to 1986 re-emerged after 1986.

10. Climate and Malaria Relationships in Uva

Even though Sri Lanka's climate does not vary by much compared to many other parts of the world, the spatial and seasonal variations results in important consequences for malaria risk. We report on preliminary climatological analysis of mean monthly malaria incidence, rainfall and temperature for districts in Uva (Badulla and Moneragala) and those close by (Nuwara Eliya, Hambantota, Batticaloa). We have also undertaken investigations of inter-annual variability. The incidence of malaria is characterized both by a robust mean annual cycle even though there are strong epidemic type behavior in certain years. This robust mean annual cycle is driven by the contrasting seasonality of rainfall and temperature in the 5 districts.

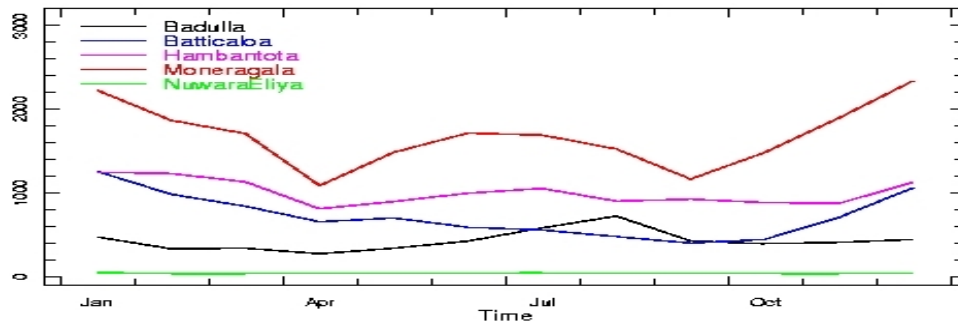


Figure The relative variation of the mean annual cycle for malaria morbidity (positive blood tests) in Sri Lanka. Morbidity is bimodal for all districts excluding Batticaloa. Batticaloa experiences only the Maha maximum.

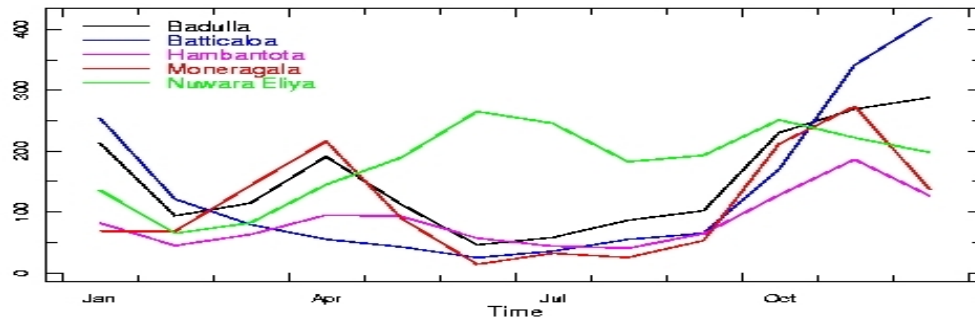


Figure The mean annual cycle for rainfall (mm) in Sri Lanka. Rainfall is bimodal for all districts excluding Batticaloa. Peaks occur during both Maha and Yala. Batticaloa experiences only the Maha maximum.

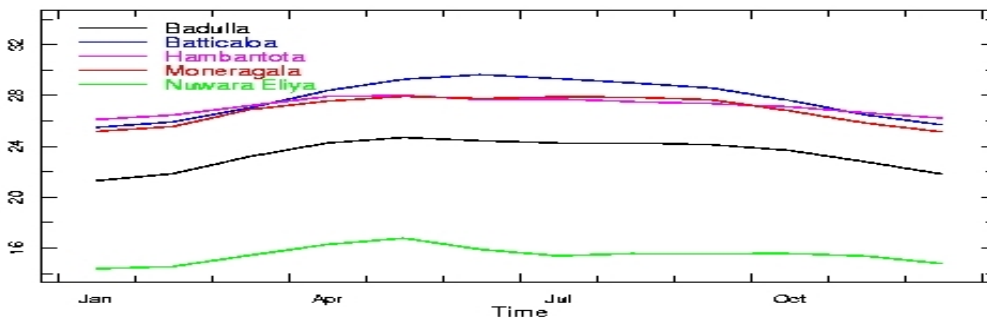


Figure The mean annual cycle for temperature (°C) in Sri Lanka. Maximum temperatures occur during the boreal summer (May-June), while minimum temperatures occur during the boreal winter (December-January).

Badulla District:

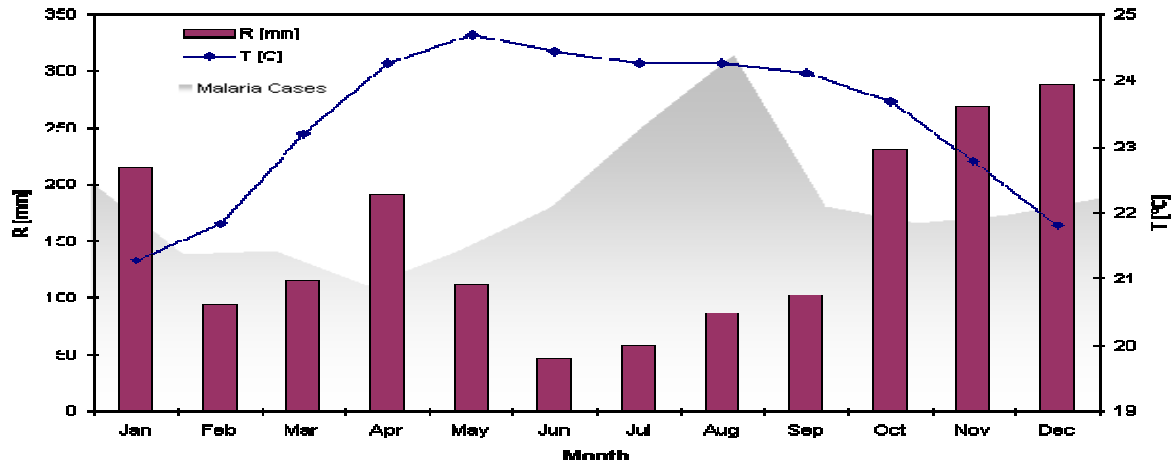


Figure The mean values for Malaria cases, total rainfall and mean daily temperatures from January to December computed for the 1971-2001 period for the Badulla District. Note, that the rainfall and temperature seasonality that is shown represent point measurements in the capital of the Badulla district.

The Badulla District which is in the highlands of the Uva Province shows a seasonal peak in malaria incidence around August. The major peak in August is unusual for Sri Lanka as usually the December/January peak is dominant. The mean temperature varies considerably within the district. The malaria peaks follow rainfall peaks by 4 months in the summer and are coincident with the rainfall peaks in winter.

Moneragala District:

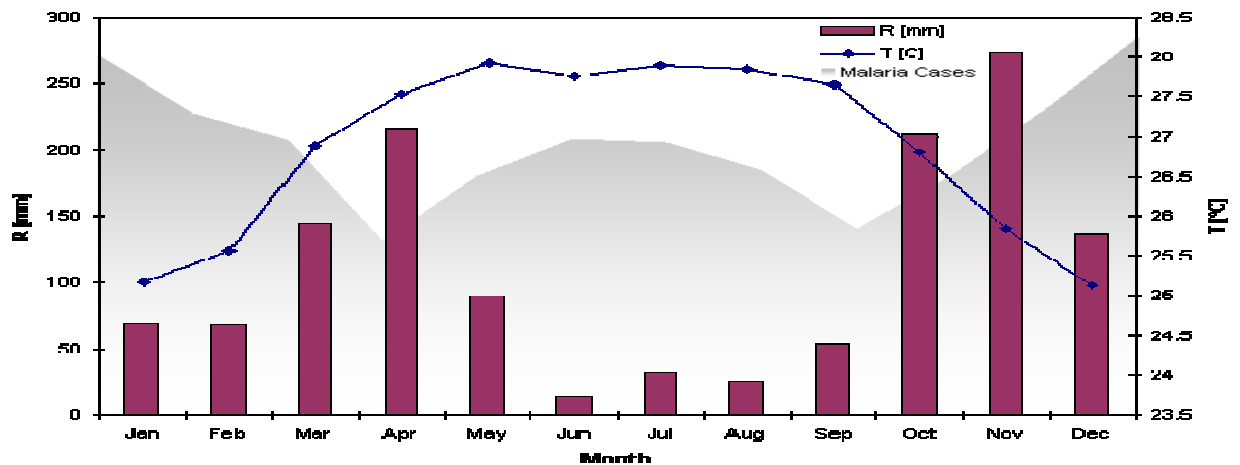


Figure The mean values for Malaria cases, total rainfall and mean daily temperatures from January to December computed for the 1971-2001 period for the Moneragala District.

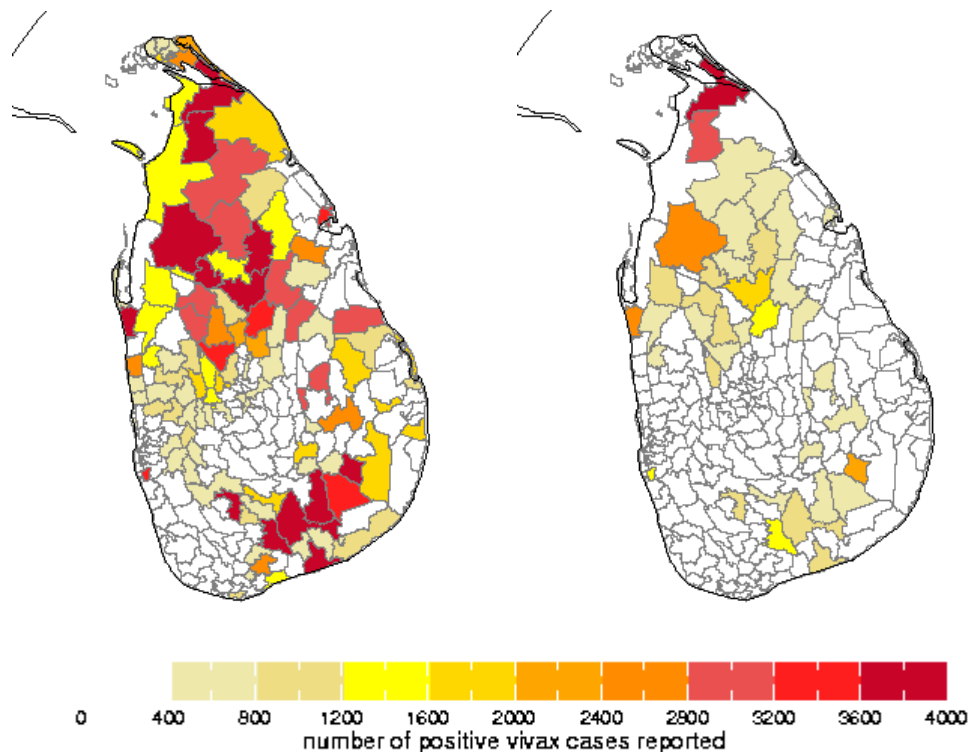
The Moneragala District comprises the lowlands of the Uva Province and is one of the most malarious regions in Sri Lanka. The seasonal peaks in both December/January and June/July/August are both significant. The malaria peaks follow the rainfall peaks by 1-2 months.

11. Predictive Malaria Risk Mapping

Given our findings of sharp spatial variability in the distribution of malaria, and observations along these lines from Regional Malaria Officers, it was important to undertake analysis at scales finer than the district scale. The availability of digitized village-level data is limited to about 10 years for only a few districts. The spatial variability at the village scale appears to be governed by vulnerability factors rather than climate. Thus, we undertook the analysis at sub-district scales that are used by the Ministry of Health agencies. Each of these sub-districts is assigned a Medical Officer of Health (MOH). Data for the 220 odd MOH divisions are available from 1971. There have been several changes in MOH divisions that have to be considered in the analysis.

We incorporated the geometries for the MOH sub-divisions after appropriate modifications into our analysis tools. We also needed to undertake various data management techniques to develop climatic data sets (Rainfall, Day and Night Relative Humidity, Mean, Minimum and Maximum Temperature) at these regional scales. Thereafter we developed probabilistic relationships between malaria and climate which were used in the first instance to predict seasonality as a test for its utility. We found that many features in the distribution of malaria could be explained. We also tested hypothesis regarding the relationship between drought and malaria at this time scale.

Malaria at MOH sub-district scales



Right: The average malaria incidence by Ministry of Health sub-districts (MOH) was represented as the annual average for the Plasmodium Vivax (left) and Plasmodium Falciparum (right). The malaria numbers are based on laboratory confirmed incidence data obtained from the Sri Lanka Anti-Malaria Campaign (AMC) for the period from 1963-2003.

Rainfall Malaria Relationships at MOH sub-district scales

An analysis of the relationship between the June-August malaria incidence and the rainfall just prior to this season is shown in the Figure at top-left. Malaria incidence exceeds 50 cases per thousand only when the rainfall is between 25 and 175 mm. This range is further narrowed when the wetter and drier sub-districts are separated. In the dry sub-districts, the incidence is high from 25-100 mm whereas the high transmission in the wet districts prevails when the rainfall is from 100-175 mm. Similar association of malaria incidence is evident with monthly means of daily minimum and maximum temperature and relative humidity. Malaria incidence exceeded 50 cases per 1000 only when the minimum temperature was in the range from 18 to 26.5°C, the maximum temperature was in the range of 28-35°C and the night-time relative humidity ranged between 70 and 90%. There is a narrower range of climatic conditions that lead to the highest transmission.

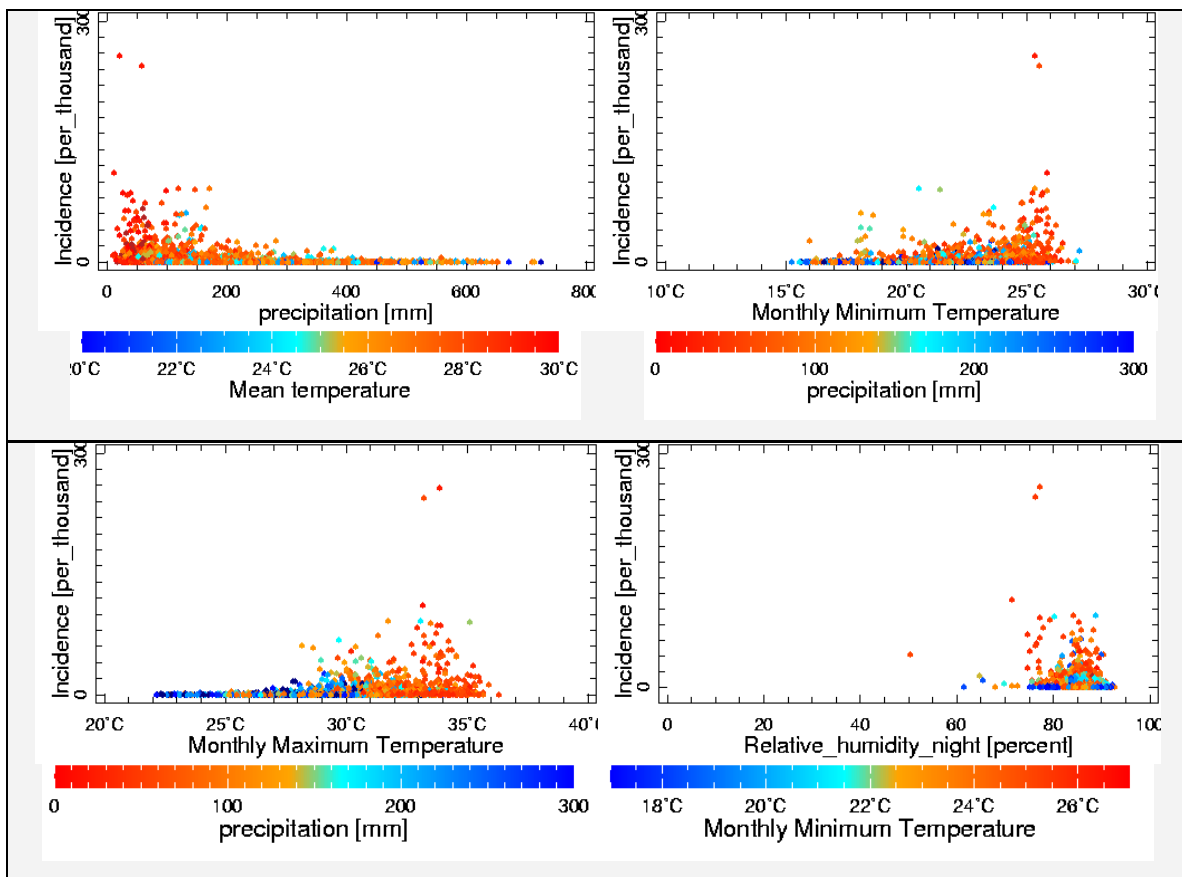
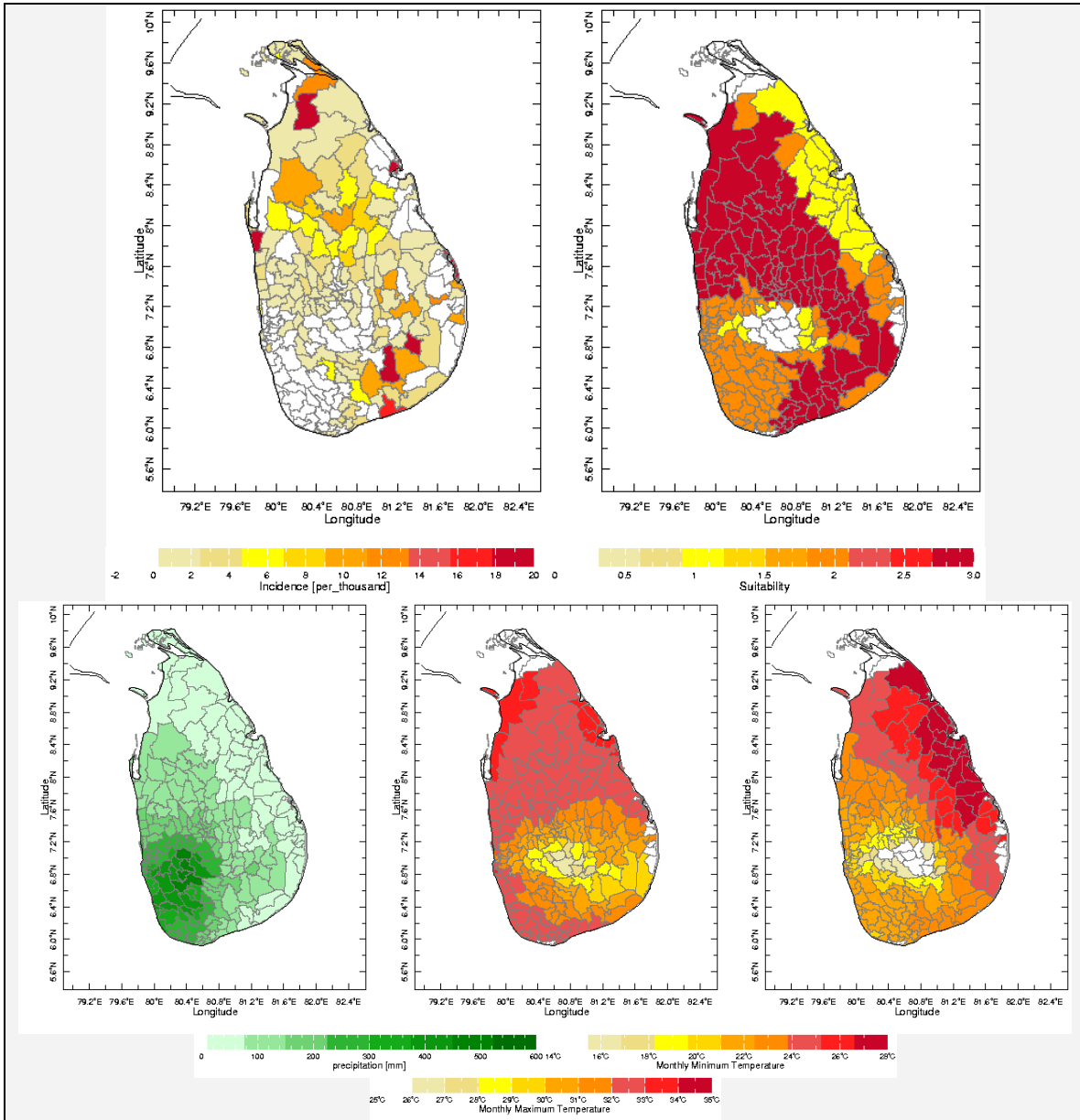


Figure Seasonal average malaria incidence in the sub-districts from 1972-2003 as a function of rainfall, temperature and relative humidity (IRI/FECT/AMC).

Top Left: Average malaria incidence from June-August is shown as a function of the average April-June rainfall. The color of each dot indicates the average temperature as given in the scale bar. Similarly, Top Right: June-August incidence as a function of minimum temperature colored by rainfall. Bottom Left: June-August incidence as a function of maximum temperature colored by rainfall. Bottom Right: June-August incidence as a function of relative humidity colored by min. temperature

Climatic Suitability at MOH sub-district scales

Climatic Suitability for Malaria Transmission



Top left: Monthly mean malaria incidence (cases per thousand) during June-August.

Top right: climatic suitability defined as a combination of thresholds on precipitation (60-200 mm), minimum (20-26°C) and maximum (28-34°C) temperature. A value of 3 (red) means that all conditions, on precipitation, minimum and maximum temperature, are met.

Bottom: Monthly mean precipitation, minimum and maximum temperature during June-August.

We undertook an exercise in identifying climatic suitability for average June-August malaria transmission based on average rainfall, and minimum and maximum temperature that are within the ranges that provide incidence greater than 50 cases/ 1000 historically (figure 5). The number of different variables (see lower panel of previous figure) that fell within these ranges were added. The resulting distribution is shown at top-right. This methodology leads to a geographic pattern that replicates the high incidence in North-West and South-East regions shown at top-left.

Incorporating Vulnerability Information and Disease Control History

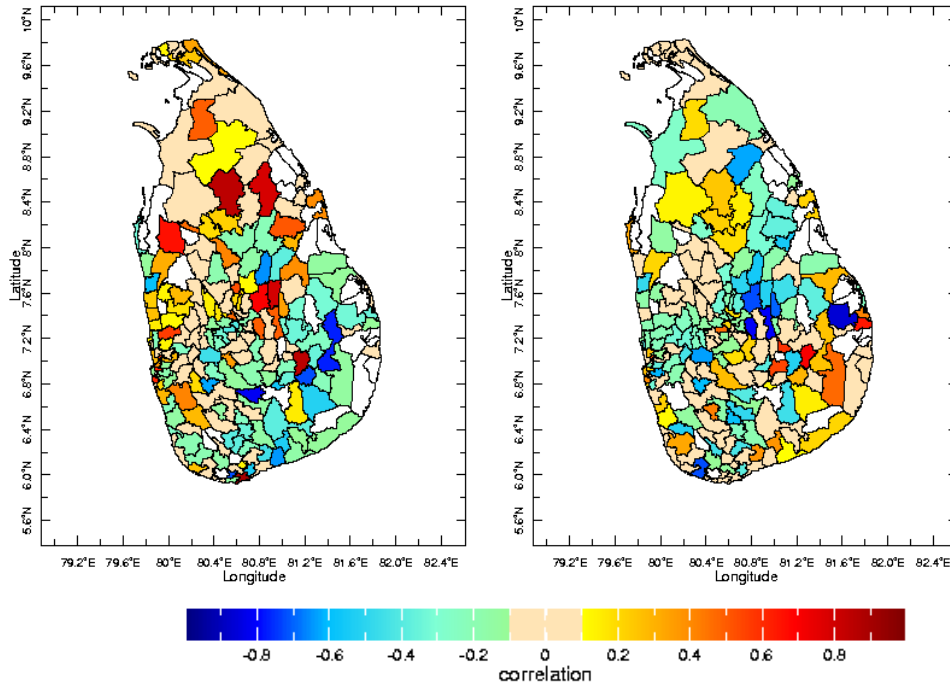
Although, the large scale geography of malaria incidence can be explained in terms of climate, there are sharp spatial contrasts in the distribution of malaria at finer scales that may be influenced more by other factors. Some of this variation may be explained by considering the local distribution of river systems. Proximity to streams, irrigation systems and abandoned gem pits, have an influence on malaria incidence. Vulnerability to malaria has a geographic aspect and adverse risk factors such as type of housing, economic activity and age distribution. The influence of control measures has to be taken account of in risk prediction. Note that climate can also have an influence on the exposure (e.g.: irrigation practices) and on vulnerability (susceptibility is enhanced due to malnutrition during droughts) and on control programs (e.g.: distribution of bed nets).

A conceptual framework for using climate information that integrates vulnerability assessment and monitoring, predictions, climate and environmental monitoring and sentinel site surveillance and incorporation into disease control activities has been proposed. Vulnerability assessment has to be conducted to delineate the geographic location of the epidemic prone populations along with other demographic and socio-economic characteristics that lead to susceptibility. Climate monitoring and seasonal forecasts can be used to anticipate disease risk if the relationship between climate and disease is understood. Early detection and warning can be undertaken through disease surveillance, entomological monitoring (which provides a lead time of weeks), monitoring climatic and environmental variables (which gives a months lead time), the use of seasonal predictions of climatic and environmental variables up to 3 months ahead (which gives a lead time of up to 4 months). The longer lead times are achieved at the cost of accuracy and greater uncertainty but all of these predictions are useful for different disease control decisions.

Testing Hypothesis on Influences of Seasonal Drought on Malaria Incidence

We took advantage of the availability of high-resolution data sets to check two hypotheses regarding the role of rainfall in malaria transmission. According to Gill (1935), the deficiency of rainfall during the spring leads to malaria incidence in the wet parts of the island and the excess of rainfall leads to epidemics in the dry part of the country. An example of these tests is shown in the correlation figures that follow.

This analysis shows seasonal variations. The high correlation of the rainfall to the North of the island supports the hypothesis, that excess rainfall in October to December leads to malaria incidence. That relationship is if anything inverted in the South. The relationship of the rainfall in the preceding dry season (July to September) has an even more complicated relationship with malaria incidence from November to February. This analysis points to the need for detailed spatial consideration.



*Figure Left - Correlation between October to December Rain and November to February Cases (Pv)
 Right - Correlation Between July to September Rain and November to February Cases (Pv).
 The correlation is based on data sets that are available for 1972-2003.*

Climate Change and Malaria Incidence

While this project focused on Climate Variability, we also undertook preliminary analysis of climate change impacts using our annual island-wide data for malaria morbidity and mortality that goes up to 1911. We also constructed annual time series for rainfall, minimum, maximum and mean temperature and day and night time relative humidity.

An examination of the relationship between rainfall, temperature and malaria incidence shows that higher morbidity prevailed during periods of lower temperature. The relationship with rainfall was not as clear cut.

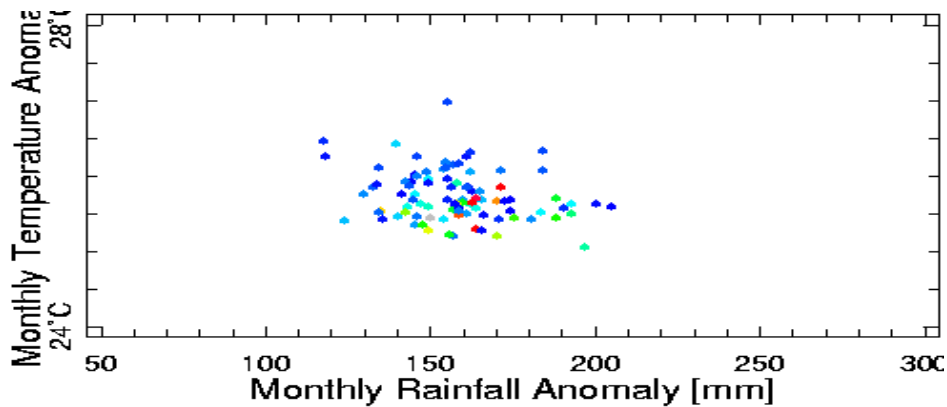


Figure The annual malaria incidence is plotted as a function of the annual rainfall anomaly and the mean annual temperature

The annual temperature may be plotted with incidence represented by the color as in the figure below. This figure shows the epidemics that coincided with lower temperatures. The association of higher incidence with lower temperatures is fairly robust at diurnal, seasonal and inter-annual time scales.

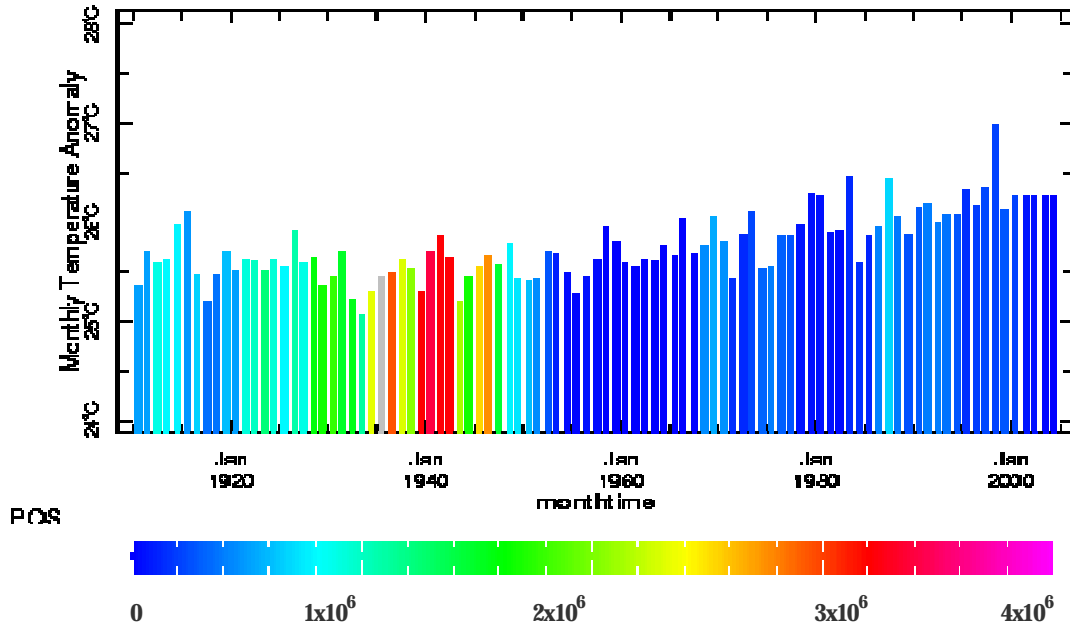


Figure Annual Sri Lankan average temperature is plotted from 1911 to 2005. The bar representing each year is colored based on the number of cases as shown in the scale bar.

12. Conclusion Workshops

Project Conclusion Workshop

This project completion workshop for the stakeholders was conducted successfully at the headquarters of the International Water Management Institute on September 17, 2007 with the participation of those who were involved with the project. The Anti-Malaria Campaign of the Ministry of Health (AMC), the Sri Lanka Department of Meteorology (MET), World Health Organization (WHO – Sri Lanka), the Foundation for Environment, Climate and Technology (FECT), and the Mahaweli Authority of Sri Lanka (MASL), along with officials of the Ministry of Health participated. This was an opportunity to have discussions regarding the progress of the project. The program fitted quite well with presentations on the experience of MEWS globally, from Steve Connor, with a presentation on the specific needs in Sri Lanka from the Director of the Anti-Malaria Campaign and presentations of the work at IRI and IWMI and their respective partners. There was an extended period for discussion, feedback and follow up of the workshop participants.

There is already a persistence based forecast system in place at IWMI. They have also undertaken work on vulnerability analysis and economic assessment of the value of MEWS. IRI have established linkages between rainfall, temperature and malaria incidence, undertaken vulnerability studies, rainfall and temperature monitoring at fine scales, downscaled climate predictions and hydrological simulations to generate soil moisture and stream-flow.

The outcomes include a revival of the collaboration between the different partners, good understanding of the potential for MEWS and the limitations, and an acknowledgement of the continuing need for climate informed MEWS even as there is a drop in the case load. And the focus now is on publication and operationalization of the project outputs. Further details on this workshop such as announcement, agenda and participants are provided in the Appendix.

Training Workshop

A the workshop at the Post-Graduate Institute of Science, University of Peradeniya on September 21, 2007 was targeted at dissemination and interaction with researchers and younger scientists. This workshop provided the opportunity to bring together related research on insecticide resistance, vector control, investigations of recent outbreaks and the specifics of the situation in the Uva, and to provide an in-depth account of the methodological issues involved in the research.

The workshop was well supported by the Anti-Malaria Campaign with extensive participation. The Acting Director provided the keynote address, and also underlined the continuing need for an early warning system and outlined the specific needs in such a system. The Epidemiologists and Regional Malaria Officers provided their experience which enriched the discussions. The University academics contributed in areas of entomology and parasitology. The workshop was also an occasion to meet with Dr. R. Siyambalagoda who had stepped down as Director of the Anti-Malaria Campaign. The contributions from IRI were well received.

Overall, this was a successful meeting that supplemented the stakeholders meeting and it enabled us to build a more comprehensive partnership with the climate and malaria community in Sri Lanka. After the meeting, we were able to meet with the two Regional Malaria Officers who visited IRI in November for further training. Further details on this workshop such as announcement, agenda and participants are provided in the Appendix.

13. Publication and Dissemination

Publications

This work led to many findings which are publishable in the peer-reviewed literature and should be disseminated to the disease control and public health community in the US, Sri Lanka and elsewhere. We have published 8 papers in peer-reviewed international journals and one chapter in a WHO publication. We have 1 paper in review with 6 papers that are in draft form. Two senior theses and one Masters thesis were submitted to Columbia University.

In Journals and Books

- L. Zubair, M. Siriwardhana, J. Chandimala and Z. Yahiya, 2008, *International Journal of Climatology*, Predictability of Sri Lanka rainfall based on ENSO, 28 (1) : 91-101.
- L. Zubair and J. Chandimala, December 2007, *Journal of Hydrometeorology*, Epochal Changes in ENSO-streamflow relationships in Sri Lanka, 7(6):1237-1246.
- J. Chandimala and L. Zubair, March 2007, *Journal of Hydrology*, ENSO based predictions for Water Resources Management in Sri Lanka, 335 (3-4), 303-312.
- L. Zubair and Chet Ropelewski, 2006: The strengthening relationship between ENSO and the North-East Monsoon over Southern India and Sri Lanka, *Journal of Climate*, 19 (8): 1567–1575.
- L. Zubair (2004), *Empowering the Vulnerable*, TIEMPO magazine, University of East Anglia, Volume 52.
- L. Zubair (2004), Weather, Climate Variability and Climate Change, Workshop Report, Synthesis Workshop on Climate Variability, Climate Change and Health in Small-Island States, Bandos Island, Maldives, 1-4 December 2003, pages 13-14, World Health Organization, Bandos, Maldives.
- S. Mahanama, R. Koster, Rolf Riehl and L. Zubair, 2007, On the predictability of seasonal streamflow from soil moisture, *Advances in Water Resources*. 31 (3): 1333-1343
- B. Lyon, L. Zubair, V. Ralapanawe and Z. Yahiya, 2007, Fine scale evaluation of drought hazard for tropical climates, *Journal of Applied Meteorology and Climatology*.
- Zubair, L., G. Galapaththy, H. Yang, J. Chandimala, Z. Yahiya, P. Amerasinghe, MN Ward, SJ Connor, Epochal Changes in the Association between El Niño and Malaria in Sri Lanka, 2007, *Malaria Journal*. 7:140

Papers in Review

- L. Zubair, Heli Bulathsinhala, M. Siriwardhana, J. Chandimala, U. Tennakoon and Z. Yahiya, 2007, Climate Change Trends from Quality Evaluated Surface Temperature Data in Sri Lanka, *International Journal of Climatology*.

Papers in Draft Form

- Zubair, L., M. Siriwardhana, H. Yang, J. Chandimala, Z. Yahiya, U. Tennakoon, S. Partridge, A. Giannini, MN Ward., S. J. Connor, (2008) *Seasonality and Spatial Variation of Malaria in Sri Lanka in relation to Climate*.
- Zubair, L., O. Ndiaye, N. Ward, R. Perera and J. Chandimala (2008), Statistical Downscaling from a GCM at fine resolutions in a monsoon climate.
- H.M. Faizal, J. Simonson, Z. Yahiya, J. Chandimala, A. Giannini, Zubair, L., (2008) *Climate and Malaria in South-Eastern Sri Lanka*.
- P.H.D. Kusumawathie, A. Giannini, Z. Yahiya, J. Chandimala, Zubair, L., (2008) *Climate and Malaria in Central Sri Lanka*.
- B. Nawarathna, L. Zubair, M. Bell, J. Del Corral., J. Chandimala, (2008) Calibration of Satellite Rainfall Estimates for Sri Lanka.

- Chandimala, J. and L. Zubair, (2008) Topography based interpolation of Surface Temperature.

Papers in Preparation

- M. Bell, J. Del Corral, B. Blumenthal, B. E. Grover-Kopec, Nawarathna, J. Chandimala, S.J. Connor, N.Ward, L. Zubair, (2008) *Rainfall Monitoring for Malaria Early warning for Sri Lanka*.
- Zubair, L., M. Siriwardhana, H. Yang, J. Chandimala, Z. Yahiya, U. Tennakoon, S. Partridge, A. Giannini, S. J. Connor, (2008) *Spatial and Inter-Annual Variation of Malaria in Sri Lanka in relation to Climate*.
- Giannini, Z. Yahiya, J. Chandimala, A. Layns, D. Bader, L. Zubair, (2008) *Climatic Suitability for malaria transmission in Sri Lanka*.
- Zubair, L. et al. (2008) Climate Change and Malaria in Sri Lanka.
- L. Zubair et al., (2008), Streamflow Anomaly Associations with Malaria Epidemics in Sri Lanka.
- Zubair, L. (2008) *Malaria Early Warning Prediction System for Sri Lanka*.

Peer Reviewed Conference Proceedings

- Chandimala and L. Zubair (2004), *Predictability of Streamflow and Rainfall in the Kelani river basin in Sri Lanka using ENSO*, International Conference on Sustainable Water Resources Management in the Changing Environment of the Monsoon Region, United Nations University, Colombo, Sri Lanka.
- L. Zubair (2004c) Downscaling of Sri Lanka's Maha Rainfall from a GCM and Indian Ocean Dipole and ENSO influences, International Conference on Sustainable Water Resources Management in the Changing Environment of the Monsoon Region, United Nations University, Colombo, Sri Lanka.
- L. Zubair, U. Tennakoon and M. Siriwardhana (2004d), Climate Change Assessments for Sri Lanka from Quality Evaluated Data, International Conference on Sustainable Water Resources Management in the Changing Environment of the Monsoon Region, United Nations University, Colombo, Sri Lanka.

Reports

- January 2004: Zeenasy Yahiya and L. Zubair (2004), *Climate and Malaria Project Initiation Workshop Report*, Foundation for Environment, Climate and Technology, Digana Vilalge.
- Jun 2006: M. Siriwardhana, H. Yang, U. Tennakoon, and L. Zubair, Monthly maps of average malaria incidence in Sri Lanka by district.
- Jun 2006: U. Tennakoon, M. Siriwardhana, Z. Yahiya, Yoosuf Ashraj, Siraj Razick, H.M. Faizal and L. Zubair, *Spatial Atlas of Malaria Incidence in the Uva Province*.
- May 2006: Stacey Hirsh, Vidhura Ralapanawe, J. Chandimala and L. Zubair, *Characterization of Climate Influences on NDVI over Sri Lanka*.
- Nov 2005: J. Chandimala and L. Zubair, Land surface model implementation for a catchment in the Uva.
- Joseph Simonson, REU report to the National Science Foundation, Analysis of the Impacts of Rainfall and Mean Temperature on Malaria Morbidity in Southeastern Sri Lanka, July 2007

Theses

- Lindsay Kaye Warren, Predicting Malaria Risk Using Climate Parameters: Evaluation of Methods, Senior Thesis, Columbia University, May 2006
- Lady Vanessa Reyes, *Vulnerability to Malaria in Sri Lanka*, Senior Thesis, Barnard College, May 2006
- Dinali Nelun Fernando, *Climate impact on Water Scarcity and Malaria Risk in the Deduru Oya Basin of Sri Lanka*, M.A. thesis, School of International and Public Affairs, Columbia University, August 2006

Dissemination

This work was disseminated through conferences, meetings and workshops in the US, Sri Lanka, Kenya and Maldives. The posters that have been presented are assembled into the appendix of this report. In addition, we include a one-page flyer that was distributed at the IPCC Conference of the Parties in Bali in December 2007. We also disseminated the content via two workshops in Sri Lanka. The majority of the dissemination events are listed below.

Conference Proceedings and Abstracts

- December 2006: Chandimala J., Hirsh S., Ralapanawa V., Zubair L., Vegetation Mapping and its Application in Drought Disaster Identification. *International Conference on Humid Tropical Ecosystems: Changes, Challenges, Opportunities*, UNESCO and Sri Lanka National Science Foundation. Kandy, 4th-9th December, Kandy, Sri Lanka
- August 2006: Topographically informed interpolation of temperature in Sri Lanka, J. Chandimala, U. Tennakoon, M. Siriwardhana, L. Zubair, *Third Annual Sessions of the GIS society of Sri Lanka*, Central Environment Authority, Battaramulla, Sri Lanka.
- July 2005: L. Zubair, Climate Risk Management: Case Studies in Public Health, Natural Disasters and Renewable Energy, *Biennial Conference of the Association of Environmental Engineering and Science Professors*, Clarkson University, Potsdam, New York, July 23-27.
- June 2006, Chandimala J., Siriwardhana, M., and Zubair L., Topographically informed high resolution temperature estimates for Sri Lanka, *Sri Lanka Association for Advancement of Science, 62nd annual sessions, 2006* (under review)
- June 2006, Siriwardhana M, Chandimala J, Zubair L., ENSO influences on mean temperature of Sri Lanka, *Sri Lanka Association for Advancement of Science, 62nd annual sessions, 2006* (under review)
- March 2006: L. Zubair, Progress in Developing a Climate based Malaria Early Warning System in Sri Lanka, *Climate Predictions and Applications Sciences Workshop*, Tucson, Arizona, 21-24 March 2006.
- February 2006: L. Zubair, Using Climate Information for River Basin Management in Sri Lanka, *Invited Presentation, Annual Meeting of the American Meteorological Society*, Atlanta, February 2, 2006.
- November 2005: Neil Ward, James Hansen, Sankar Arumugam, Dan Osgood, L. Zubair, Casey Brown, Ashok Mishra, Decision System Research and Tool Development at the IRI, *U.S. Climate Change Science Program Workshop, "Climate Science in Support of Decisionmaking,"* Arlington, Virginia. November 14-16, 2005.
- L. Zubair, J. Qian, N. Ward, O. Ndiaye, J. Chandimala, R.Perera, V. Ralapanawe and B. Blumenthal (2004b), Complementary Dynamical and Statistical Downscaling from a GCM: Maha rainfall over Sri Lanka, Annual Meeting of the American Geophysical Union, San Francisco.

Presentations

This listing does not include the project conclusion and training workshop which are documented in the appendix.

- March 2007: Sarith Mahanama, L. Zubair, J. Chandimala, Soil Moisture Memory and Predictability of Seasonal Streamflow in Sri Lanka, *International Conference on Mitigation Of The Risk Of Natural Hazards*, University of Peradeniya, Sri Lanka, March 27, 2007.
- March 2007: L. Zubair, Fine-scale hydro-climatic information for malaria epidemic prediction", *Greater Horn Of African Climate Outlook Forum and Malaria Outlook Forum*, Nairobi, Kenya. March 5-10, 2007.
- February 2007: L. Zubair, Developing a Suite of Climate Information for Applications in Sri Lanka, Invited Lecture Earth System Science Interdisciplinary Center (ESSIC), University of Maryland, College Park, Maryland. February 16, 2007.

- December 2006: L. Zubair, Sarith Mahanama, J. Chandimala and Neil Ward, *Hydroclimatological Simulation over Sri Lanka Using Global Reanalyses*, American Geophysical Union Annual Conference, San Francisco. Poster
- June 2006: L. Zubair, Progress in Developing a Climate based Malaria Early Warning System in Sri Lanka, *Foundation for Environment, Climate and Technology*, Kandy, Sri Lanka, 1 June 2006.
- January 2006: L. Zubair, Advances in Climate for River Basin Management, *Mahaweli Authority of Sri Lanka*, Headworks Administration and Operations Management Division, Digana, Sri Lanka, January 4, 2006.
- November 2005: L. Zubair, Predictability of Climate around Sri Lanka and its Applications, *Global Modeling and Assimilation Office, National Aeronautical and Space Agency*, Maryland.

Posters

The majority of the posters that were prepared by IRI and its partners are listed below and included as a supplement to this report. They are categorized following the methodology section as:

Malaria and Dengue Incidence

- Climate and Health : Malaria and Dengue in Sri Lanka
- Annual and Monthly Average Distribution of Malaria in Sri Lanka
- Dengue Incidence in Sri Lanka
- Annual and Monthly Malaria (Pv) Incidence at MOH Scale in Sri Lanka

Climatology

- Rainfall Climatology of Sri Lanka
- Temperature Climatology of Sri Lanka
- Climate Calendar of Sri Lanka

Climate Monitoring

- Rainfall Monitoring for Early Warning for Uva Province and Sri Lanka
- Validation of Satellite Rainfall Estimates over Sri Lanka

Climate Predictions

- IRI Seasonal Climate Forecasts for Sri Lanka
- High Resolution Climate Prediction for Sri Lanka
- High Resolution Dynamical Downscaling for Sri Lanka

Hydrological Modeling

- Predictability of Streamflow in Sri Lanka using Global Climate Information

Vulnerability to Malaria

- Vulnerability to Malaria in Badulla District, Uva Province in Sri Lanka

Climate and Malaria Relationships

- Analysis of Association of El Nino and Malaria Epidemics in Sri Lanka
- Analysis of the Impacts of Rainfall and Mean Temperature on Malaria Morbidity in Southeastern Sri Lanka.

14. Outcomes

Here is a comparison of the outputs from the project as opposed to what we have accomplished:

Extract from the Project Proposal:

The specific outcomes from this project will be:

1. A methodology to convey the modulation of disease transmission by climate variability.
2. An understanding of the historical relationships between malaria transmission, meteorological and environmental factors in Sri Lanka.

3. A detailed understanding of the interaction between climate variability and malaria transmission in the *Uva* Province of Sri Lanka.
4. An evaluation of the use of a hydrological model based on digital elevation maps and meteorological data to forecast hydrological parameters of epidemiological significance in a tropical setting.
5. A methodology to forecast disease epidemics a season in advance spatially, using climate predictions, remotely sensed environmental data and spatial analytic techniques.
6. An archive of climatic, hydrological, entomological, epidemiological data and tailored climate forecasts for a specific location at a high resolution.
7. An evaluation of the skill of malaria risk mapping technology and the identification of the measures needed to improve its skill.
8. An evaluation of the effectiveness of risk-maps in malaria control planning.
9. An economic analysis of the various costs associated with malaria incidence, household costs and disease-control costs and the costs of incorporating climate variability information into malaria risk maps.
10. Documentation on the incorporation of climate variability into malaria risk mapping technology.
11. Dissemination of these results to other areas of low to moderate endemicity.
12. Establishment of a working relationship and exchange of scientific products between IWMI and the IRI.

Delivery compared with Expected Outcomes:

All of the above outcomes have been delivered in large measure. The outcomes related to items 1-6 have been documented in this report. Complementary and sometime independent outcomes are also being reported in the IWMI report. The outcomes related to Items 7-9 are being reported exclusively in the report from IWMI. While many outcomes related to Items 10-12 are being reported here, residual work shall continue, particularly in relation to completing publications.

15. References

Note: Additional References cited under section 13 on Publications.

Bouma MJ and Van der Kaay HJ (1996) The El Niño Southern Oscillation and the historic malaria epidemics on the Indian subcontinent and Sri Lanka: an early warning system for future epidemics? *Tropical Medicine and International Health*. 1, 86-96.

Briercliffe R (1935). The Ceylon Malaria epidemic, 1933. *Report by the Director of Sanitary Services*. Sessional Paper XXII,-1935, Ceylon Government Press.

Gill CA (1936). Some points in the epidemiology of malaria arising out of the study of the malaria epidemics in Ceylon in 1934-35. *Transactions of the Royal Society of Tropical Medicine and Hygiene XXIX* : 427-466.

Ministry of Health (2001), A Five Year strategic plan for Roll Back Malaria in Sri Lanka, 2001-2005, Ministry of Health, Colombo, Sri Lanka, 138

Visvalingam T. (1961) A review of the problem and control of malaria in Ceylon, *Journal of the Ceylon Public Health Association* 2, 43-99.

International Research Institute for Climate and Society
Earth Institute at Columbia University
PO Box 1000, Palisades, NY10964-000, USA
Tel: +1.845.680.4468, Fax: +1.845.680.4864