

LONDON
SCHOOL of
HYGIENE
& TROPICAL
MEDICINE



Dickens, BL; Sun, H; Jit, M; Cook, AR; Carrasco, LR (2018) Determining environmental and anthropogenic factors which explain the global distribution of *Aedes aegypti* and *Ae. albopictus*. *BMJ global health*, 3 (4). e000801. ISSN 2059-7908 DOI: <https://doi.org/10.1136/bmjgh-2018-000801>

Downloaded from: <http://researchonline.lshtm.ac.uk/4649442/>

DOI: [10.1136/bmjgh-2018-000801](https://doi.org/10.1136/bmjgh-2018-000801)

Usage Guidelines

Please refer to usage guidelines at <http://researchonline.lshtm.ac.uk/policies.html> or alternatively contact researchonline@lshtm.ac.uk.

Available under license: <http://creativecommons.org/licenses/by-nc-nd/2.5/>

Determining environmental and anthropogenic factors which explain the global distribution of *Aedes aegypti* and *Ae. albopictus*

Borame Lee Dickens,¹ Haoyang Sun,¹ Mark Jit,^{2,3} Alex R Cook,¹ Luis Roman Carrasco⁴

To cite: Dickens BL, Sun H, Jit M, *et al.* Determining environmental and anthropogenic factors which explain the global distribution of *Aedes aegypti* and *Ae. albopictus*. *BMJ Glob Health* 2018;**3**:e000801. doi:10.1136/bmjgh-2018-000801

Handling editor Alberto Garcia-Basteiro

► Additional material is published online only. To view please visit the journal online (<http://dx.doi.org/10.1136/bmjgh-2018-000801>).

Received 27 February 2018
Revised 23 May 2018
Accepted 13 July 2018



© Author(s) (or their employer(s)) 2018. Re-use permitted under CC BY-NC. No commercial re-use. See rights and permissions. Published by BMJ.

¹Saw Swee Hock School of Public Health, National University of Singapore and National University Health System, Singapore

²Department of Infectious Disease Epidemiology, London School of Hygiene and Tropical Medicine, London, UK

³Modelling and Economics Unit, Public Health England, London, UK

⁴Department of Biological Sciences, National University of Singapore, Singapore

Correspondence to
Dr Borame Lee Dickens;
bdickens@gmail.com

ABSTRACT

Background Responsible for considerable global human morbidity and mortality, *Aedes aegypti* and *Ae. albopictus* are the primary vectors of several important human diseases, including dengue and yellow fever. Although numerous variables that affect mosquito survival and reproduction have been recorded at the local and regional scales, many remain untested at the global level, potentially confounding mapping efforts to date.

Methods We develop a modelling ensemble of boosted regression trees and maximum entropy models using sets of variables previously untested at the global level to examine their performance in predicting the global distribution of these two vectors. The results show that accessibility, absolute humidity and annual minimum temperature are consistently the strongest predictors of mosquito presence. Both vectors are similar in their response to accessibility and humidity, but exhibit individual profiles for temperature. Their mapped ranges are therefore similar except at peripheral latitudes, where the range of *Ae. albopictus* extends further, a finding consistent with ongoing trapping studies.

We show that variables previously identified as being relevant, including maximum and mean temperatures, enhanced vegetation index, relative humidity and population density, are comparatively weak performers.

Results The variables identified represent three key biological mechanisms. Cold tolerance is a critical biological parameter, controlling both species' distribution northwards, and to a lesser degree for *Ae. albopictus* which has consequent greater inland suitability in North America, Europe and East Asia. Absolute humidity restricts the distribution of both vectors from drier areas, where moisture availability is very low, and increases their suitability in coastal areas. The latter is exacerbated by accessibility with increased likelihood of vector importation due to greater potential for human and trade movement.

Conclusion Accessibility, absolute humidity and annual minimum temperatures were the strongest and most robust global predictors of *Ae. aegypti* and *Ae. albopictus* presence, which should be considered in control efforts and future distribution projections.

Key questions

What is already known?

- *Aedes aegypti* and *Ae. albopictus* are two important vectors of global diseases, including dengue, Zika, yellow fever and Chikungunya.
- Numerous mapping exercises have been conducted with limited consensus on key drivers.

What are the new findings?

- Accessibility, absolute humidity and annual minimum temperatures are consistently the strongest predictors of the presence of both species of vectors.
- Variables previously identified as being relevant, including maximum and mean temperatures, enhanced vegetation index, relative humidity and population density, are comparatively weak performers.

What do the new findings imply?

- Vector monitoring policy and disease risk mapping can use these key global drivers in future modelling efforts for control.

INTRODUCTION

Mapping of vectors and disease is a continuing process requiring evaluation of environmental and social factors that contribute to successful establishment or transmission.^{1–3} Two major mosquito vectors, *Aedes aegypti* and *Ae. albopictus*, which are responsible for the transmission of globally important diseases such as dengue, Zika, yellow fever and Chikungunya, have been studied and mapped at regional and global scales.^{4–9} These studies collectively use a range of different environmental and anthropogenic predictors to understand their distributions, which creates differences and additional uncertainties in the findings between map outputs. As these vectors are responsible for considerable disease and cost burden,¹⁰ exploring the predictive performance of current variables and establishing the strongest spatial drivers can aid global

policy in the targeting of interventions and allocation of resources for national vector control programmes.

Multiple factors determine vector presence, population size and carrying capacity. Due to their short and complex life-cycles, a multitude of environmental parameters have been proposed to be critical to population establishment and successful reproduction in a location.^{11–13} Many of these parameters come from studies which examined epidemiological endpoints where these are assumed to be a proxy of vector abundance, including temporal correlations which have been observed between dengue incidence and temperature,^{14 15} rainfall,^{16 17} wind^{17 18} and humidity^{19 20} across a variety of case study sites. Overall, three general variable groupings have been identified as being critical to vector establishment: temperature, moisture availability and anthropogenic indicators which demonstrate host availability.

Temperature is known to be critical as it detrimentally affects both species' poikilothermic and small-bodied physiology at the aquatic larval stages,^{20–22} with critical isothermal limits inhibiting emergence to the adult stage altogether.^{7 23} Additional variables explored include daily, monthly and annual minimum, mean and maximum air temperature, and diurnal range.^{24–28} Another key temperature group that affects population regulation is ground and surface temperatures, which can significantly prolong or shorten life expectancy as vectors at immature stages are often restricted to small, cryptic habitats with strong density dependence effects.^{21 29} This is further complicated by the vectors' unimodal response to temperature, egg overwintering behaviour, anthropogenic microclimates and secondary effects of temperature-driven stage transition.^{30 31}

Another important group is moisture availability. Although hygrosensation and desiccation avoidance are still understudied in insects, parameters such as rainfall and humidity are known to cause regional variation in the distribution of both species and restrict their ability to establish. The relationship between rainfall and mosquito populations is multifaceted, contributing to habitat creation and larval mortality.³² Evidence both supports and contradicts the role of rainfall in vector establishment, especially during disease outbreaks,^{33–35} where complex precipitation patterns, surface water dynamics and a diversity of time lags affect the local vector population size.^{36–38} Another disputed proxy of moisture availability affecting these species is relative humidity, which is thought only to affect behavioural or survival vector changes at the extremes.^{12 39} As a ratio measure of actual and saturated vapour pressure, relative humidity is strongly dependent on temperature, making comparisons of similar humidity values in different locations difficult to interpret.⁴⁰ Other studies have thus proposed alternate quantifiable proxies such as absolute humidity and vapour pressure as covariate candidates for vector survival or dengue incidence.^{20 41–43} Further alternatives include the number of wet days and vegetation indices such as the normalised difference vegetation index

and enhanced vegetation index (EVI), which represent habitat stability and reduced desiccation risk.⁴⁴

The final group is a factor that complicates all climatic measures. Both vectors show thermal regulation behaviour and avoidance of unsuitable temperatures, where their anthropophilic nature,⁴⁵ indoor resting and exploitation of artificial habitats such as water tanks⁴⁶ increase their proximity around hosts. Ongoing urban expansion is therefore likely to increase the availability of sheltered habitats for either vector to establish where adequate temperatures, artificial pools and host presence will enhance their survival and reproduction rates. This may even be observed in areas where the host density was previously low,⁴⁷ necessitating the inclusion of a variable which represents anthropogenic space.

The heterogeneity of variables explored across local studies is reflected in spatial analyses and models used to estimate *Ae. aegypti* and *Ae. albopictus* distributions. At the global scale, Khormi and Kumar⁶ used CLIMEX to estimate the distribution of *Ae. aegypti* using a range of variables including maximum and minimum monthly temperatures, precipitation and relative humidity. Kraemer *et al*⁴⁴ then estimated the global distribution of *Ae. aegypti* and *Ae. albopictus* using boosted regression trees (BRTs) with EVI, minimum relative humidity, cumulative precipitation, urban classification and temperature suitability maps published by Brady *et al*⁵ as covariates. At a regional scale using different sets of WorldClim variables, Fischer *et al*⁴⁸ and Cunze *et al*⁷ examined the limits of *Ae. albopictus* in Europe using maximum entropy models (MaxEnt), with similar analyses performed for Italy⁴⁹ and Pakistan.⁵⁰ Both Caminade *et al*⁵¹ and Proestos *et al*⁹ also explored the presence of *Ae. albopictus* in Europe, with the former using sigmoidal functions for temperature, minimum and maximum temperature, and precipitation, and the latter using temperature, precipitation and relative humidity criterion. Recently, Ducheyne *et al*⁵² published suitability maps for both vectors across the understudied Eastern Mediterranean region, citing the importance of precipitation and host availability.

Mapping studies that fail to add the most important determinants can lead to confounded and spurious results, and to date no study has considered all variables identified as potentially explanatory in local and laboratory findings. To consolidate previous modelling efforts and resolve inconsistencies between them, we test the predictive power of a large set of proposed environmental and anthropogenic factors, identified by previous mapping efforts or local studies as potential factors enhancing or limiting survival or fecundity. In doing so, we explore assumptions held over the importance of variables such as relative humidity, EVI, rainfall and diurnal ranges of temperatures. We aim to ascertain the top performers among temperature, moisture and host availability indicators which can provide insight into the key biologically limiting factors that inhibit the vectors' overall spread and show the predictive ability of very similar variables which would otherwise be competing for

explanatory power. We carried out the analyses by evaluating the performance of these covariates in different candidate sets of temperature, moisture availability and anthropogenic variables using an ensemble of BRTs and MaxEnt models. Our final goal is to produce maps of vector suitability based on the most optimal set of covariates identified.

METHODS

Two modelling exercises were carried out using BRTs and MaxEnt, which are modelling techniques used to estimate species distributions by examining the relationships between recorded presence points and biologically relevant spatial variables. First, to obtain the highest contributing variables in explaining the distributions of *Ae. aegypti* or *Ae. albopictus*, sets of variables which included at least one temperature, moisture availability and anthropogenic variable were proposed for both BRTs and MaxEnt runs and repeated 10 times. The overall highest contributing variables were used in 250 BRTs and MaxEnt fits for each species to spatially map their suitability.

Data collection

A comprehensive database of 19930 and 22137 geopositioned occurrences of *Ae. aegypti* and *Ae. albopictus*, collected by Kraemer *et al.*,⁵³ was used as presence-only records.⁵³ Data from this compendium were sourced globally within the period of 1960–2014 from published literature and unpublished occurrence data from national entomological surveys (see Kraemer *et al.*⁵³ for a description of presence point collection methods and quality control). All covariate data available for this time period were collected and split into subcategories of temperature, moisture availability and anthropogenic variables. Based on data sources from previous studies, WorldClim^{7 49 50} and ERA-Interim (ERA) data⁶ were used as environmental covariates.

WorldClim is a compilation of global terrestrial climate surfaces, using monthly weather station data over the time period from 1950 to 2000 at an interpolated 0.0083° (~1 km) resolution and the ANUSPLIN software.⁵⁴ The variables consist of monthly total precipitation, minimum and maximum temperature, and 19 derived bioclimatic variables which include seasonal ranges of temperatures and precipitation. The annual median temperature, maximum rainfall, median rainfall and minimum rainfall were calculated. ERA is a global reanalysis climatic data set from 1979 to date published by the European Centre for Medium-Range Weather Forecasts. It contains 60 vertical layers in a fully coupled land–atmosphere–ocean system and is obtained at a resolution of 0.125° (approximately 14 km) at six hourly intervals. Air temperature at 2 m, soil temperature and moisture (level 1: 0–5 cm), and total rainfall were used. To extract the minimum and maximum temperatures, the 5th and 95th percentiles along the temporal dimension of the climatic data sets were used in favour of Fourier transform

methods and Savitzky-Golay filters, as the removal of unusual weather dynamics was preferred over denoising. Absolute humidity was calculated from vapour pressure using the ERA dewpoint and air temperature with Tetens conversion. To represent wet days from the ERA data set, the average number of light, medium and heavy rain days each year, classified as 1 mm, 5 mm and 10 mm per day by the World Meteorological Organization,⁵⁵ was calculated and labelled as the minimum, median and maximum number of wet days.

For vegetation cover, the EVI derived from National Aeronautics and Space Administration's Moderate Resolution Imaging Spectrometer⁵⁶ and gap-filled by Weiss *et al.*⁵⁷ was used. Altitude data were obtained from SRTM 90m Digital Elevation Database V.4.1.⁵⁸ For the anthropogenic variables defining host availability, the 2010 United Nations-Adjusted Socioeconomic Data and Applications Center population density estimates⁵⁹ and accessibility maps⁶⁰ were used. Nightlight data were not used as they were assumed to be a proxy of these. Accessibility is represented by an urban agglomeration index map based on population density and travel time to the nearest population of 50 000 people. All data sets were resampled to 5 km resolution using bilinear interpolation (all the variables used are listed in online supplementary table 1, grouped as temperature, moisture and anthropogenic).

Modelling

All subsequent analyses were carried out in R V.3.3.2.⁶¹ We employed two machine learning techniques: BRTs and MaxEnt. These are two powerful modelling techniques able to fit complex surfaces from presence data to represent species distributions. BRTs select relevant variables while overcoming inaccuracies from a single tree model and reducing prediction variance.⁶² MaxEnt has also been used extensively to explore multiple species distributions⁶³ by maximising entropy with the occurrence points as constraints.⁶⁴

Each BRT and MaxEnt fit was generated and evaluated using the *gbm* and *dismo* R packages.^{65 66} BRT model parametrisation was done following the methods of Elith *et al.*⁶⁷ to determine the optimal model configuration in terms of learning rate, tree complexity and bag fractions. Cross-validation and forward stage search reduce bias provided a large number of trees were fitted, where a minimum threshold of 1000 was assumed here.⁶⁷ For MaxEnt, the recommendations of Elith *et al.*⁶³ were followed. All model performance was assessed by the True Skill Statistic (TSS), otherwise known as Youden's Index, which is independent of prevalence, minimising the mean error rate for positive and negative observations, and maximising the sum of sensitivity and specificity. Binary presence and absence suitability thresholds were calculated using the optimal threshold that maximised the TSS of the models, which has consistently been found to produce accurate predictions.⁶⁸

Suitable combinations of variables were assessed in algorithm 1 (online supplementary table 2). A correlation matrix was calculated between each variable and combinations of variables were proposed. Each combination had at least one variable from temperature, moisture and anthropogenic groupings (online supplementary table 1), with a correlation of less than 0.4 between all variables.

Pseudo-absence data were obtained across a $0.2^\circ \times 0.2^\circ$ grid by random sampling, which yields more reliable distribution models.⁶⁸ Antarctica and areas above 56°N in latitude, which are highly unlikely to have populations of either vector, were excluded as they are uninformative.

To reduce sampling bias across continents, hierarchical clustering was used to create 100 point blocks for presence and 1000 point blocks for pseudo-absence, where four random blocks were independently drawn per model run from each of the three general longitudinal regions: Americas, Europe-Africa, Asia-Oceania. From these blocks, 1000 presence and 10 000 pseudo-absence points were then randomly selected, with subsequent pairing of test presence blocks with the test absence blocks closest to the training presence blocks to further reduce spatial bias. Fivefold cross-validation was used within each BRT and MaxEnt, and further BRT hyperparameter optimisation and model simplification were carried out in algorithm 2 (online supplementary table 2). The first modelling exercise ran 871 variable combinations using MaxEnt and BRTs 10 times to ascertain the highest contributing variables in algorithms 3 and 4 (online supplementary table 2). The second exercise ran BRTs of the top-performing variables a further 250 times to establish CIs and drew prediction maps of suitability over areas with missing data based on the variable raster maps.

RESULTS

We present the maps of the median *Ae. aegypti* and *Ae. albopictus* suitability based on the three highest contributing variables in the final ensemble model (figure 1) using BRTs. BRTs generally performed well (TSS for BRTs—*Ae. aegypti*: median 0.84 (IQR 0.76–0.86); *Ae. albopictus*: median 0.71 (IQR 0.66–0.78)) and outperformed MaxEnt (TSS for MaxEnt—*Ae. aegypti*: median 0.78 (IQR 0.75–0.82); *Ae. albopictus*: median 0.69 (IQR 0.63–0.75)). We therefore dropped MaxEnt results in the final ensemble model. The top 5 and bottom 5 variable contributors for both species are presented in figure 2, with the full list available in online supplementary figure 1.

Performance of covariates

The top three selected variables which consistently explained the majority of the presence point distribution in the variable selection process were accessibility (time required to travel to an area of 50 000 population), median absolute humidity and minimum annual temperature (figure 2), which were subsequently used in the final ensemble model of BRTs for both species.

Suitability substantially declines when one of these variables is unsuitable for mosquito population growth, highlighting the necessity of all three for large-scale mosquito establishment (online supplementary figure 2). Accessibility has a high relative influence for both species' BRTs (figure 3A), highlighting the influence of increased transportation, globalisation and urban spread, with no lower threshold. The partial dependency plots (online supplementary figure 3A,B) demonstrate that a higher probability of presence exists for *Ae. aegypti* in areas with good accessibility at 620 mins away (or lower) from the nearest city of 50 000 people compared to *Ae. albopictus* at 880. Values greater than these thresholds, representing areas farther away from urban centres, are inhibitory to mosquito population growth, although *Ae. albopictus* is able to exist in areas which are less urban.

For *Ae. aegypti*, various representations of minimum temperature from both ERA and WorldClim performed equally well (figure 2A, online supplementary figure 1A,B), supporting the findings of temperature being a constraint for the latitudinal expansion of *Ae. aegypti*'s distribution. *Ae. albopictus* shows a greater area of potential establishment in comparison with *Ae. aegypti* when limited by annual minimum temperatures (figure 3B). *Ae. aegypti* requires warmer climatic regimens, with increasing probability of presence where minimum temperatures are above 8°C , which differs from *Ae. albopictus* which prefers a distinct cooler range of at least 2°C (online supplementary figure 3C,D). Both species however are similar in their restrictions at high minimum temperature climatic regimens above 24°C , which is indicative of their unimodal responses to temperature.

Median absolute humidity, a measurement of water vapour in the air regardless of temperature, performed well as a proxy for moisture availability for both species where relatively humid climates are preferred. *Ae. albopictus*, preferring natural rainfed habitats, was additionally influenced by precipitation indices, including wet days and total monthly precipitation covariates, whereas *Ae. aegypti* shows less sensitivity, being more able to exploit human-filled water containers (online supplementary figure 1C,D). Both species showed a similar response, with the increased probability of presence with values above 10 g/m^3 (figure 3C, online supplementary figure 3E,F). Neither species showed an upper threshold demonstrating its preference for humid conditions within areas of suitable temperature and accessibility.

Variables which did not contribute notably for either species across methods included mean and maximum temperatures, spatially explicit GDP, EVI, altitude, diurnal temperature range, wind speed, relative humidity and soil water volume.

Predicted suitability range maps

After bootstrapping, the spatial predictions were well constrained to a similar distribution, differing in intensity of suitability at the peripheral latitudes and in areas of lower suitability, which reflects areas of uncertainty

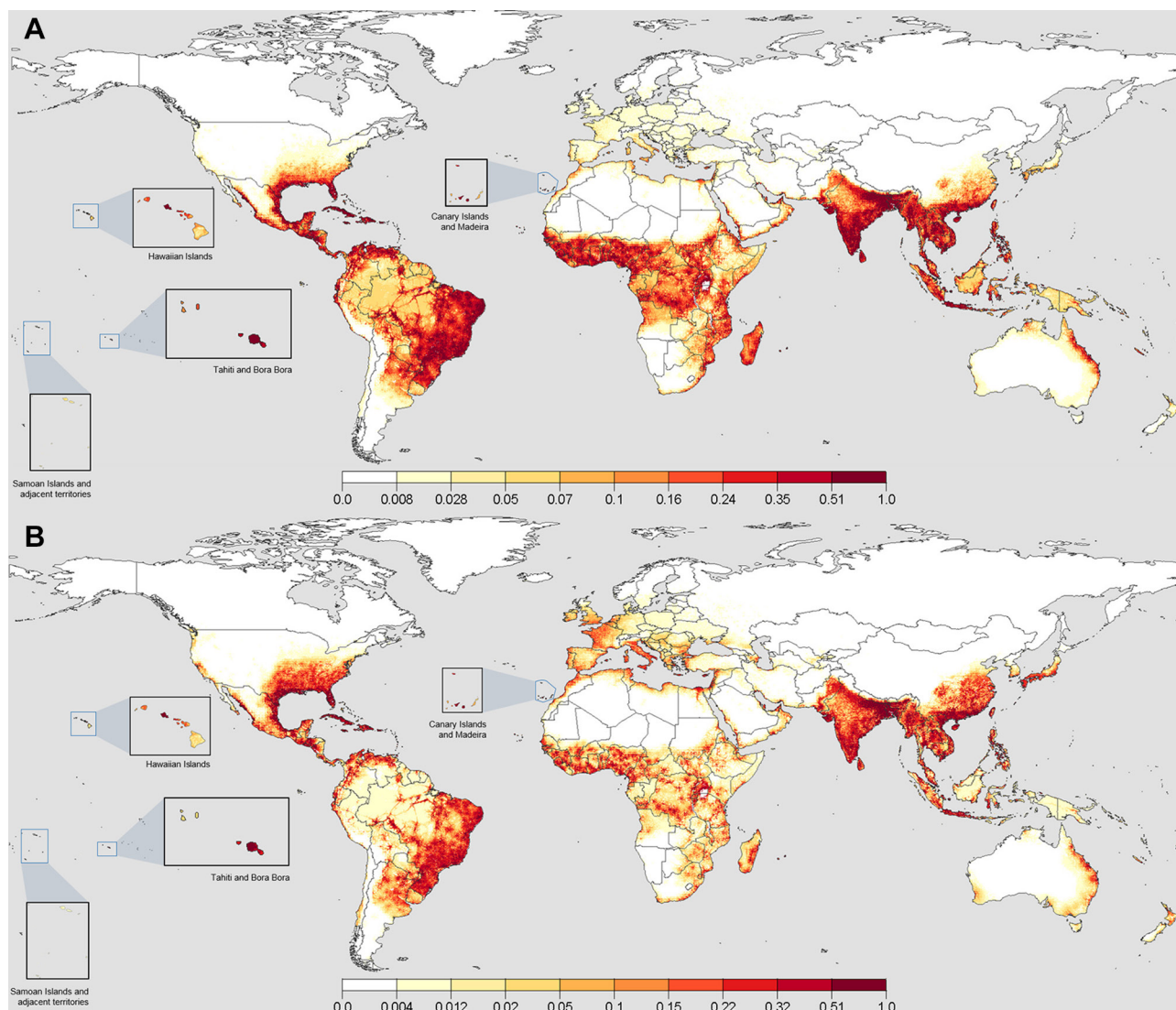


Figure 1 Suitability maps for *Aedes aegypti* and *Ae. albopictus* at the 50th percentile from 250 boosted regression trees. When converted to binary presence/absence, values greater than a median threshold of 0.24 for *Ae. aegypti* and 0.22 for *Ae. albopictus* indicated the presence across all fits. Panel (A) shows the results for *Ae. aegypti*, where the Indian subcontinent, South-East Asia, Eastern South America, Mid-Africa, Caribbean and Southern North America have the highest projected suitability. Notably, East Australia, Madagascar and the coastal regions of the Middle East show areas of high suitability. Europe, the heavily forested areas of the Amazon and latitudinal fringes of the distributions show sharp waning to areas of no suitability. Panel (B) shows the results for *Ae. albopictus*, where considerable similarities exist across the greatest areas of suitability for *Ae. aegypti*. Greater northward suitability exists in North America, Europe, China and the southern coast of Korea and Japan.

for mosquito establishment or low potential suitability overall (online supplementary figure 4).

In the Americas, high suitability for *Ae. aegypti* was observed in Brazil, where the highest density of presence data exist (figure 1A). We found that the suitability extends into northern Argentina and the Amazon rainforest via major travel routes. Suitability is not homogeneous within the rainforest or areas with high altitude due to poor accessibility. In the USA, suitability is very low beyond the utmost south-eastern states, possibly due to lower humidity values and colder winter temperatures. *Ae. albopictus* showed similar suitability ranges with an extended northerly and coastal westerly distribution in the USA, owing to its greater tolerance to low

temperatures (figure 1B). The projected distributions in the Central Americas show that the conditions are more suitable for *Ae. aegypti* but equally suitable for both species in the Caribbean islands.

The coastal regions of Portugal, Spain, southern France and Italy showed a favourable environment for *Ae. aegypti* (figure 1A). With ongoing recorded dengue outbreaks, Sudan, Oman, Egypt, Saudi Arabia, Iran and Yemen also showed suitability, particularly at the Nile Delta and coastal regions. The species continues to have good suitability in mid-Africa and down the eastern coast towards Madagascar. Higher temperatures and humidity values (figure 3B,C) also exist in these locations in comparison with the south-western coast. *Ae. albopictus* had lower

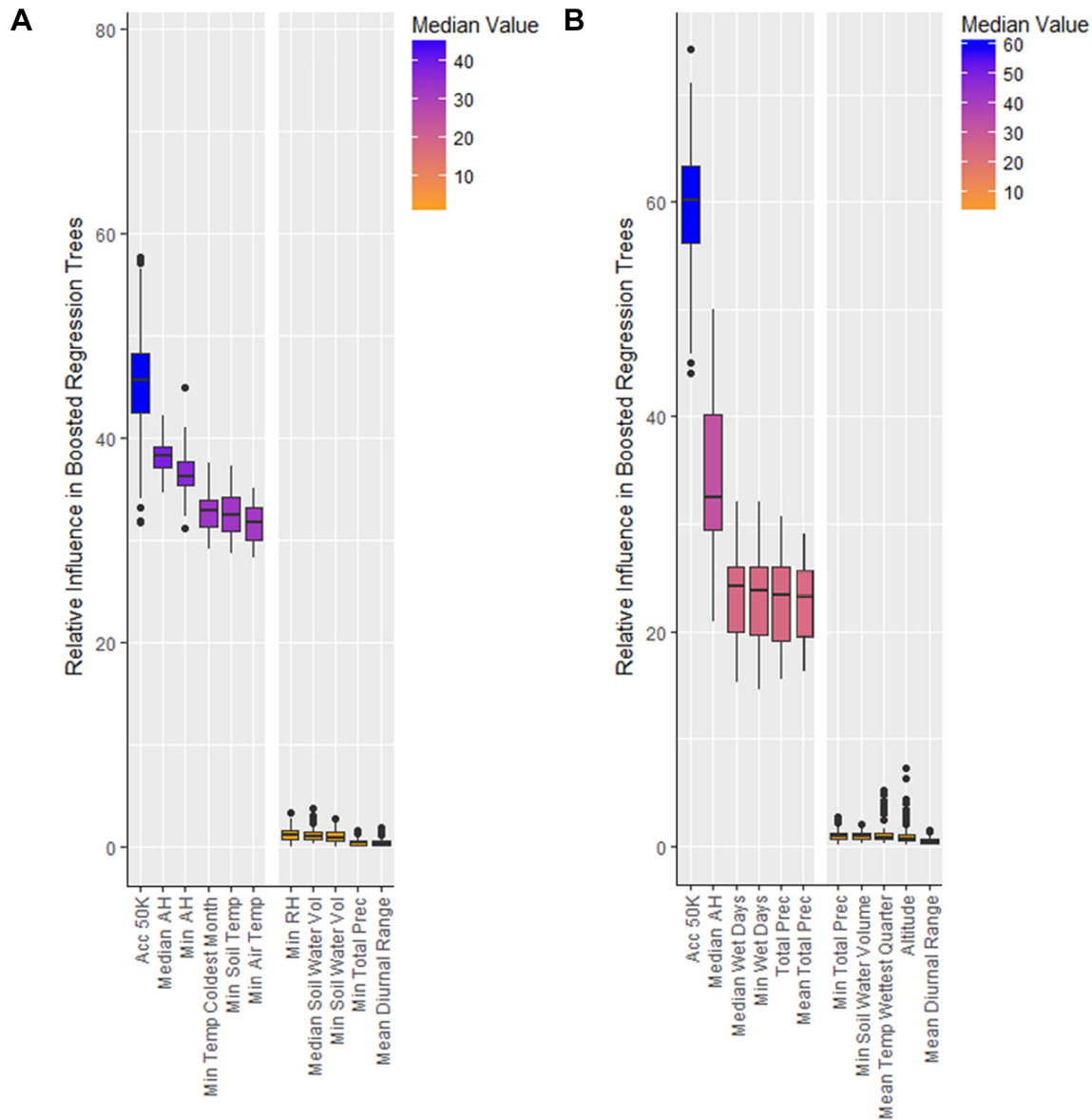


Figure 2 Top-performing and bottom-performing variables in relative influence in boosted regression trees for the prediction of both *Aedes aegypti* and *Ae. albopictus* presence. Panel (A) shows the top-performing variables for *Ae. aegypti* are Socioeconomic Data and Applications Center (SEDAC) accessibility, ERA annual median and minimum absolute humidity, WorldClim (WC) minimum temperature of the coldest month, and ERA annual minimum soil and air temperature. The bottom performers were ERA annual minimum relative humidity, ERA annual median and minimum soil water volume, ERA annual minimum total precipitation, and WC mean diurnal temperatures range. Panel (B) shows a similar trend for *Ae. albopictus*, where SEDAC accessibility and ERA annual median absolute humidity are the best performers, with ERA annual median and minimum wet days, and WC annual total and mean monthly precipitation also performing well. Annual minimum temperatures still perform as the best temperature constraint for *Ae. albopictus*, as displayed in the full version of this figure in online supplementary figure 1. The worst performers for *Ae. albopictus* were ERA annual minimum total precipitation and soil water volume, WC mean temperature of the wettest quarter, altitude, and WC mean diurnal temperature range. AH, absolute humidity; RH relative humidity.

values of suitability outside of highly accessible areas across Africa and the Middle East (figure 1B).

The presence of *Ae. albopictus* in Europe is notably different from *Ae. aegypti*, being spread across a wider latitude range and differing ecozones. We identified Italy and surrounding islands, western France, the coastal areas of Portugal and Spain, and the Mediterranean coastline as suitable areas for *Ae. albopictus*, which have

recorded populations according to the European Centre for Disease Prevention and Control.^{69 70}

The Indian subcontinent and mainland South-East Asia were highly suitable for both *Ae. aegypti* and *Ae. albopictus* (figure 1A,B). The inland areas of South-East Asia showed particularly high suitability with high accessibility and climatically suitable regimens for year-round populations. Papua New Guinea and Kalimantan showed

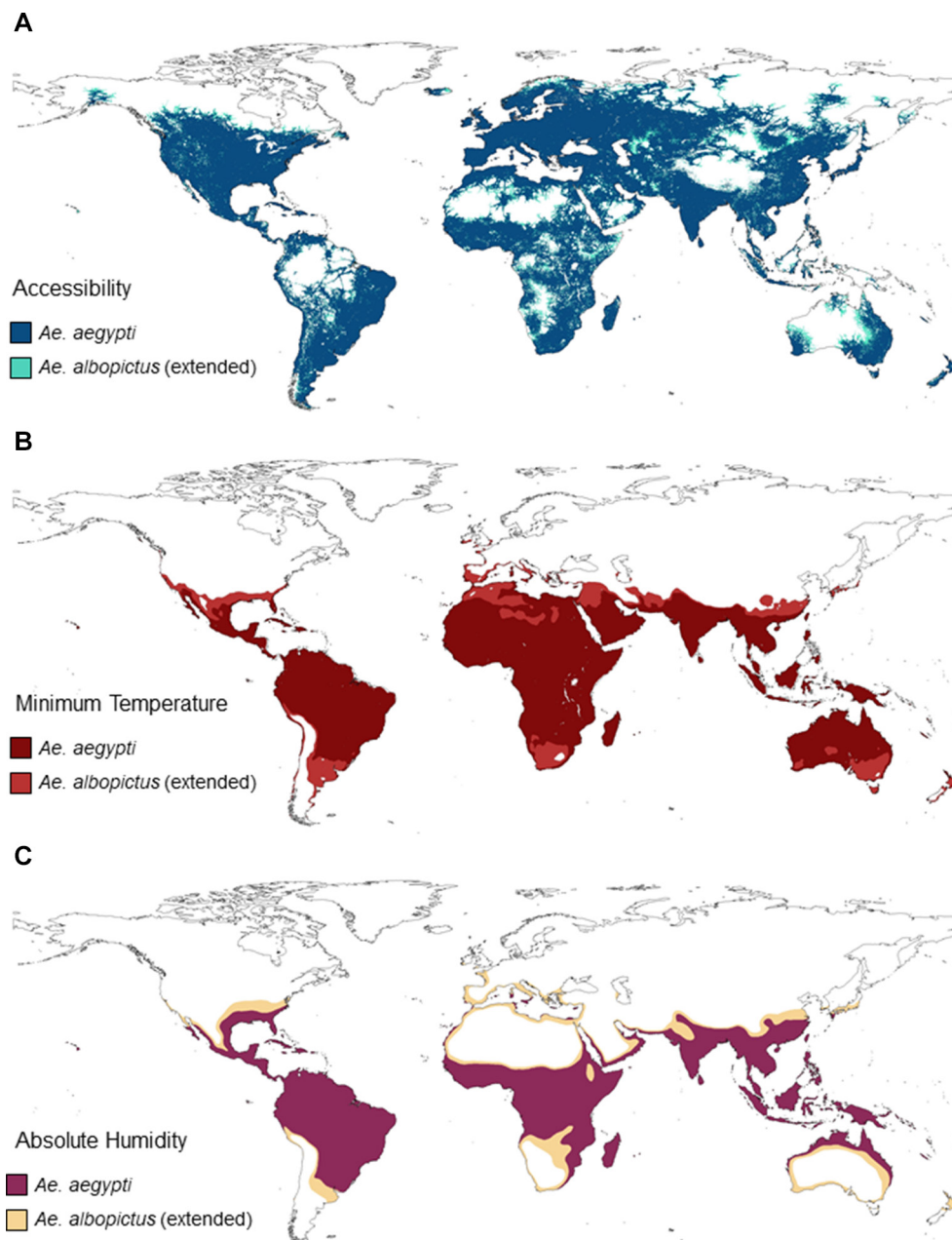


Figure 3 Effects of the three covariates identified in the final models for *Aedes aegypti* and *Ae. albopictus*. We used the threshold for the highest sum of sensitivity and specificity as a cut-off for the marginal effect on logit(p) and generated maps indicating areas where, according to that variable, the vector is predicted to be present. Panel (A) shows the effects of accessibility where very inaccessible areas hinder establishment for both species. *Ae. albopictus* is however able to establish in less accessible areas in comparison with *Ae. aegypti*, being less anthropophilic. Panel (B) shows the effects of temperature on *Ae. aegypti* and *Ae. albopictus*. *Ae. albopictus* is able to occupy almost the entire range of *Ae. aegypti* and shows extension beyond these regions into cooler areas. Panel (C) shows that absolute humidity affects *Ae. aegypti* and *Ae. albopictus* similarly.

lower suitability inland, possibly due to inaccessibility. More northerly areas of China, the southern Korean peninsula and southern Japan were also suitable for *Ae. albopictus*.

DISCUSSION

At a global scale, minimum annual temperature, median absolute humidity and accessibility were selected as the covariates which explained the majority of the presence points for both *Ae. aegypti* and *Ae. albopictus*. Representative

of thermal stress, moisture and host availability, the covariates combined restricts the distribution of both species when values are unsuitable for the vectors' survival or reproduction.

Multiple studies have identified minimum temperature^{6 51} or the mean temperature in the coldest yearly quarter,^{48 71 72} month⁵⁰ or January⁷ as critical factors in determining presence. The minimum estimated temperature thresholds for *Ae. aegypti* range from 4°C to 10°C^{73–75} and for *Ae. albopictus* from –5°C to 1°C,^{12 72 76}

which is in agreement with our 8°C and 2°C estimates. We identified *Ae. albopictus* suitability across the Mediterranean coastline, western France and the southern UK coastline, which is more in agreement with Caminade *et al*,⁵¹ where the temperature criteria were not limiting. We show almost no suitability for Scotland and Denmark, unlike previous studies,^{9 51} where the cut-offs chosen designate them as potential sites for mosquito presence. Our maps did not match the predicted European distribution of Kraemer *et al*,⁴⁴ which shows very limited suitability beyond northern Italy, showing instead more spatial similarity with their temperature suitability variable map.⁵ We did however observe similarities with their North American outputs. Our maps also show strong differences for *Ae. albopictus* across India and South-East Asia, with strong suitability and higher suitability southwards in Japan due to higher minimum temperatures. *Ae. albopictus* eggs generally show remarkable tolerance with recorded captures as north as 40°N in Honshu Island, Japan, provided the mean temperature is above -2°C in January.²⁷

Inversely, *Ae. aegypti*'s tolerance to higher temperatures in comparison with *Ae. albopictus* is reflected by its higher suitability across Africa and the Middle East, which is also supported by Ducheyne *et al*,⁵² although they identified maximum temperature as an important variable. In contrast, the current analysis finds that maximum temperature variables have relatively poor performance, supported by ground observations at sites with consistently high temperatures in North Africa, the Middle East and Indian subcontinent, especially at port cities where heavy commerce contributes to importation.^{77 6 51 48 71 72 50 7} Other studies have also observed lower prediction power when using the warmest yearly quarter temperature data in comparison with coldness indicators.^{7 48 71} Similarly, annual mean temperature was a poorer predictor for both species, in agreement with previous studies.^{7 52 78} Equally, relationships inferred with altitude^{49 50 52 78} are likely to be a function of temperature.

Their behavioural avoidance of unsuitable temperatures and transitional adaptability are further reflected by the poor performance of the diurnal temperature range or temperature seasonality, previously used,^{50 52 78} and soil or surface water temperature. Both species are able to exploit habitats unaffected by ground thermal dynamics, exhibiting container breeding behaviour where temperatures are less erratic.⁷⁹ Although the role of behavioural thermoregulation is unclear at large spatial scales, their exploitation of sheltered microhabitats at temperatures where most humans inhabit is evident at the global scale. The use of population density in this study to explain their anthropogenic nature is thus problematic. Population density has previously been used as a predictor,^{44 50 52} but we observed high uncertainty in its predictive performance, which was dependent on the other variables selected and subsets of presence points, indicating overall that both species can exist in areas of high and low population density.

As a composite indicator of population density and transportation networks, accessibility was a very strong performer with high influence and increased suitability along networks and inhabited nodes in our maps. Our findings support the ability of *Ae. aegypti* and *Ae. albopictus* to establish at a wide range of population densities as both can be found in urban and rural settings.⁷³ Both provide exposure to hosts, artificial breeding habitats and settings where vector control is very challenging. This may partially explain why the spatially explicit gross domestic product generally performed poorly. Populations of either vector exist in both affluent areas such as Hong Kong and Southeastern USA⁸⁰ and areas with higher levels of poverty.⁸¹ We hypothesise that urban expansion, which facilitates larger less-disconnected mosquito populations, is the strongest anthropogenic driver.⁸²

Uncertainty was also observed in the use of precipitation variables, which is reflected both in our study and the wide range previously used such as the mean values in the warmest^{7 48} or driest^{48 50} or coldest⁷⁸ portion of a year. Annual precipitation has been shown to be a relatively weak predictor by previous regional and global studies,^{7 71} which our study supported, reflecting the complex temporal effects of precipitation at large spatial scales. We however found that the number of wet days was a good predictor for *Ae. albopictus*, in agreement with previous findings,^{4 12} but not for *Ae. aegypti*. EVI was a moderate predictor for both species overall, being potentially confounded by absolute humidity, which is generally higher where transpiration processes occur. Previously used in mapping efforts as vegetation provides wetness, shelter and nectar feeding opportunities,⁴⁴ the global effects of EVI are difficult to extract where small-scale vegetated areas appear sufficient for mosquito population growth.⁸³ The effects of land use⁵⁰ may also be complicated as either vector may be able to exploit microhabitats within a range of land types such as urban, periurban, rural low-density housing and agricultural areas.

We found that the highest contributing covariate for moisture availability was absolute humidity, a function of dewpoint temperature and vapour pressure. Proximity to the coast or large water bodies can raise absolute humidity, causing coastal areas to appear more suitable alongside greater populations of people due to accessibility. Absolute humidity values are sufficiently high for both species across India, which is contrary to maps of Kraemer *et al*,⁴⁴ which used precipitation as its indicator of moisture, and Khormi and Kumar,⁶ which used relative humidity. Absolute humidity values also support populations across South-East China and Asia but is limited to North Australia and New Zealand, providing potential insight into limiting factors that prevent further spread.

Relative humidity is widely used as a covariate to model mosquito mortality,^{6 9} but *Ae. albopictus* populations have been observed with summer humidity values as low as 35% in Europe.^{12 84} Relative humidity does not appear to

be limiting where, for example, the low values across West India are not inhibitive with populations recorded widely. Where relative humidity levels are low, absolute humidity can remain high.⁸⁵ Dengue incidence or vector density has been correlated to absolute humidity^{20 41} and vapour pressure,^{2 43 86} but little work has been done to examine the role of absolute humidity on mosquito mortality.

Concerns of the vectors' ongoing spread with high apparent physiological adaptability and multiple disease vector competence make *Ae. albopictus* a serious future public health threat and *Ae. aegypti* a continuing issue. Continued ongoing introduction via trading is likely to enhance the spread of both vectors, as observed with *Ae. albopictus* and tyre imports into the USA and Europe,⁴ making the mapping of distributions an ongoing challenge. Our findings support those of Hales *et al*,⁴³ where they discuss the importance of vapour pressure, which is very strongly correlated to absolute humidity, as a strong determinant of dengue. With greenhouse gas-induced warming hypothesised to cause ongoing increases in absolute humidity and temperature⁸⁷ and urbanisation continuing to spread, the distribution of both of these vectors is likely to increase. Ascertaining the strongest global drivers for their distribution is vital to gain insight into future areas of risk for disease transmission and should be a priority for future research.

Several limitations exist in our estimates. The lack of a temporal dimension in this modelling approach and covariates emphasises the importance of global variables that demonstrate the strongest forcing effects on vector populations across space and time. The effects of other variables that may enhance seasonal or annual population survival are difficult to ascertain in their strength and applicability across different local areas under those exhibiting the greatest effects. Owing to the long time scale of vector collection, which is considered to be cumulative and not representative of the year of collection, the percentiles of all available climatic data within the vector data collection period were used where possible to represent the spatial drivers independent of time. Errors in the raw covariate values are an additional source of extrinsic error, which is difficult to estimate. Annual fluctuations in temperature and extreme events could allow either vector to establish temporarily in areas when data were collected, causing thresholds to shift. The vector may additionally also show adaptations to climatic changes and host preferences over this period of vector collection.

The use of pseudo-absence sampling can also negatively impact distribution models⁶⁸ and introduce error in the predictions. Ascertaining true absence points is challenging despite the extensive global sampling undertaken as both species are occasionally passively transported, can reproduce and establish rapidly, and coexist with many other mosquito species.⁸⁸ Detection probability and sample selection bias, and the anthropophilic nature of both species, are further difficult to separate when considering accessibility. The use of presence points is also problematic in these methods where no

temporal dimension exists, and historical data collected are assumed to still indicate presence today. Similarly, the success of mosquito control programmes is both highly temporal and difficult to assess with differing environmental regulations and government expenditure.

Omission of key variables can create spurious correlations and model fittings, which is problematic among large-scale studies. We propose that species distribution mapping be a twofold process, where the fitting informs which collated variables from local statistical studies of climatic drivers of mosquito populations and laboratorial knowledge of their behaviour are the top performers at the study scale, which can be used with bootstrapping of the presence and pseudo-absence data to ascertain the optimised distributions and uncertainty. The removal of variables which have a non-global effect or are observed locally for select locations, or are possible collinear variables showing clear secondary effects from the strongest drivers, can provide insight into critical variables for use in current population studies and future distribution mapping with climate change.

Different time scales, spatial scales, numbers of weather stations used or sources for climatic data, size and sampling of mosquito or disease by proxy sampling data sets, and study outcome can all impact the relevance of a variable in a study. The wide range of variables used, even in regional studies,¹⁰ is evidence of the uncertainty surrounding the environmental and anthropogenic drivers of mosquito populations, where this study highlights that at the global scale minimum temperature, absolute humidity and accessibility are critical to establishment success. Local studies with strong gradients in vector population presence can use these variables as a starting point for exploration, although other key drivers may be present, such as different water storage practices, local climate phenomena and the interactions between them. For example, the provision of habitats by artificial containers in Singapore is likely to be a strong driver where factors such as rainfall may contribute. Further mechanistic studies should be carried out which may disentangle environmental and anthropogenic drivers at smaller spatial scales, especially with changing environmental regimens. There is a general need to integrate the findings of mechanistic and statistical studies to better understand the non-linear responses of environmental drivers across space and time.

Both the difficulties in locating cryptic microwater habitats and their high biting rates at a range of host densities make these vectors challenging to control. By understanding their distributions, new technologies such as Wolbachia,⁸⁹ designed to reduce vector reproduction capacity, can continue to be effectively trialled by identifying more ideal candidate sites. Furthermore, traditional control methods can be evaluated by comparing case data in neighbouring areas of similar estimated vector suitability. Where importations of either vector is being observed, the question of whether establishment is possible is imperative to assess, especially where

autochthonous cases of the diseases they transmit occur. A key step forward is to use this study's findings to examine the effects of climate change and the key variables identified here on these vector populations as the diseases they transmit have been identified as a global health and security risk priority.⁹⁰ Overall, provided minimum temperatures and absolute humidity values are sufficiently high with access to human hosts, either vector will continue to be able to establish across a large global domain. The vectors' anthropophilic behaviour, thermal tolerance and desiccation resistance at a global scale are remarkable, as shown in the maps presented.

Contributors BLD carried out the data processing, modelling work, and drafted and revised the paper. HS, MJ, ARC and LRC drafted and revised the paper.

Funding This study was funded by the Singapore Ministry of Health (Communicable Diseases Public Health Research Grant CDPHRG14NOV007).

Competing interests None declared.

Patient consent Not required.

Provenance and peer review Not commissioned; externally peer reviewed.

Data sharing statement No additional data is available.

Open access This is an open access article distributed in accordance with the Creative Commons Attribution Non Commercial (CC BY-NC 4.0) license, which permits others to distribute, remix, adapt, build upon this work non-commercially, and license their derivative works on different terms, provided the original work is properly cited, appropriate credit is given, any changes made indicated, and the use is non-commercial. See: <http://creativecommons.org/licenses/by-nc/4.0/>.

REFERENCES

- Sinka ME, Rubio-Palis Y, Manguin S, *et al*. The dominant Anopheles vectors of human malaria in the Americas: occurrence data, distribution maps and biometric précis. *Parasit Vectors* 2010;3:72.
- Bhatt S, Gething PW, Brady OJ, *et al*. The global distribution and burden of dengue. *Nature* 2013;496:504–7.
- Pigott DM, Bhatt S, Golding N, *et al*. Global distribution maps of the leishmaniases. *Elife* 2014;3.
- Benedict MQ, Levine RS, Hawley WA, *et al*. Spread of the tiger: global risk of invasion by the mosquito *Aedes albopictus*. *Vector Borne Zoonotic Dis* 2007;7:76–85.
- Brady OJ, Golding N, Pigott DM, *et al*. Global temperature constraints on *Aedes aegypti* and *Ae. albopictus* persistence and competence for dengue virus transmission. *Parasit Vectors* 2014;7:338.
- Khormi HM, Kumar L. Climate change and the potential global distribution of *Aedes aegypti*: spatial modelling using GIS and CLIMEX. *Geospat Health* 2014;8:405.
- Cunze S, Kochmann J, Koch LK, *et al*. *Aedes albopictus* and its environmental limits in Europe. *PLoS One* 2016;11:e0162116.
- Hahn MB, Eisen RJ, Eisen L, *et al*. Reported Distribution of *Aedes (Stegomyia) aegypti* and *Aedes (Stegomyia) albopictus* in the United States, 1995–2016 (Diptera: Culicidae). *J Med Entomol* 2016;53:1169–75.
- Proestos Y, Christophides GK, Ergüler K, *et al*. Present and future projections of habitat suitability of the Asian tiger mosquito, a vector of viral pathogens, from global climate simulation. *Philos Trans R Soc Lond B Biol Sci* 2015;370:20130554.
- Schaffner F, Mathis A. Dengue and dengue vectors in the WHO European region: past, present, and scenarios for the future. *Lancet Infect Dis* 2014;14:1271–80.
- Gage KL, Burkot TR, Eisen RJ, *et al*. Climate and vectorborne diseases. *Am J Prev Med* 2008;35:436–50.
- Waldock J, Chandra NL, Lelieveld J, *et al*. The role of environmental variables on *Aedes albopictus* biology and chikungunya epidemiology. *Pathog Glob Health* 2013;107:224–41.
- Walker KR, Joy TK, Eilers-Kirk C, *et al*. Human and environmental factors affecting *Aedes aegypti* distribution in an arid urban environment. *J Am Mosq Control Assoc* 2011;27:135–41.
- Gomes AF, Nobre AA, Cruz OG. Temporal analysis of the relationship between dengue and meteorological variables in the city of Rio de Janeiro, Brazil, 2001–2009. *Cad Saude Publica* 2012;28:2189–97.
- Gharbi M, Quenel P, Gustave J, *et al*. Time series analysis of dengue incidence in Guadeloupe, French West Indies: forecasting models using climate variables as predictors. *BMC Infect Dis* 2011;11:166.
- Chen MJ, Lin CY, Wu YT, *et al*. Effects of extreme precipitation to the distribution of infectious diseases in Taiwan, 1994–2008. *PLoS One* 2012;7:e34651.
- Depradine C, Lovell E. Climatological variables and the incidence of Dengue fever in Barbados. *Int J Environ Health Res* 2004;14:429–41.
- Huang X, Williams G, Clements AC, *et al*. Imported dengue cases, weather variation and autochthonous dengue incidence in Cairns, Australia. *PLoS One* 2013;8:e81887.
- Cheong YL, Burkart K, Leitão PJ, *et al*. Assessing weather effects on dengue disease in Malaysia. *Int J Environ Res Public Health* 2013;10:6319–34.
- Xu HY, Fu X, Lee LK, *et al*. Statistical modeling reveals the effect of absolute humidity on dengue in Singapore. *PLoS Negl Trop Dis* 2014;8:e2805.
- Couret J, Dotson E, Benedict MQ. Temperature, larval diet, and density effects on development rate and survival of *Aedes aegypti* (Diptera: Culicidae). *PLoS One* 2014;9:e87468.
- Stanaway JD, Shepard DS, Undurraga EA, *et al*. The global burden of dengue: an analysis from the Global Burden of Disease Study 2013. *Lancet Infect Dis* 2016;16:712–23.
- Otero M, Solari HG, Schweigmann N. A stochastic population dynamics model for *Aedes aegypti*: formulation and application to a city with temperate climate. *Bull Math Biol* 2006;68:1945–74.
- Liu-Helmerson J, Stenlund H, Wilder-Smith A, *et al*. Vectorial capacity of *Aedes aegypti*: effects of temperature and implications for global dengue epidemic potential. *PLoS One* 2014;9:e89783.
- Brady OJ, Johansson MA, Guerra CA, *et al*. Modelling adult *Aedes aegypti* and *Aedes albopictus* survival at different temperatures in laboratory and field settings. *Parasit Vectors* 2013;6:351.
- Tran A, L'Ambert G, Lacour G, *et al*. A rainfall- and temperature-driven abundance model for *Aedes albopictus* populations. *Int J Environ Res Public Health* 2013;10:1698–719.
- Kobayashi M, Nihei N, Kurihara T. Analysis of northern distribution of *Aedes albopictus* (Diptera: Culicidae) in Japan by geographical information system. *J Med Entomol* 2002;39:4–11.
- Barrera R, Amador M, MacKay AJ. Population dynamics of *Aedes aegypti* and dengue as influenced by weather and human behavior in San Juan, Puerto Rico. *PLoS Negl Trop Dis* 2011;5:e1378.
- Shillilu JI, Grueber WB, Mbogo CM, *et al*. Development and survival of *Anopheles gambiae* eggs in drying soil: influence of the rate of drying, egg age, and soil type. *J Am Mosq Control Assoc* 2004;20:243–7.
- Lima A, Lovin DD, Hickner PV, *et al*. Evidence for an overwintering population of *Aedes aegypti* in Capitol Hill Neighborhood, Washington, DC. *Am J Trop Med Hyg* 2016;94:231–5.
- Murdock CC, Evans MV, McClanahan TD, *et al*. Fine-scale variation in microclimate across an urban landscape shapes variation in mosquito population dynamics and the potential of *Aedes albopictus* to transmit arboviral disease. *PLoS Negl Trop Dis* 2017;11:e0005640.
- Seid Ahmed OM, Eitahir EA. A sequence of flushing and drying of breeding habitats of *Aedes aegypti* (L.) prior to the low dengue season in Singapore. *PLoS Negl Trop Dis* 2016;10:e0004842.
- Kuhn K, Campbell-lendrum D, Haines A, *et al*. Using climate to predict infectious disease epidemics, Geneva. 2005. <http://apps.who.int/iris/bitstream/10665/43379/1/9241593865.pdf>
- Kovats RS, Bouma MJ, Hajat S, *et al*. El Niño and health. *Lancet* 2003;362:1481–9.
- Scott TW, Morrison AC, Lorenz LH, *et al*. Longitudinal studies of *Aedes aegypti* (Diptera: Culicidae) in Thailand and Puerto Rico: population dynamics. *J Med Entomol* 2000;37:77–88.
- Schaffner F, Hendrickx G, Ducheyne E, *et al*. *Development of Aedes albopictus risk maps*: ECDC, Tech Rep, 2009.
- Chang K, Chen CD, Shih CM, *et al*. Time-lagging interplay effect and excess risk of meteorological/mosquito parameters and petrochemical gas explosion on dengue incidence. *Sci Rep* 2016;6:35028.
- Morin CW, Comrie AC, Ernst K. Climate and dengue transmission: evidence and implications. *Environ Health Perspect* 2013;121.
- Alto BW, Juliano SA. Temperature effects on the dynamics of *Aedes albopictus* (Diptera: Culicidae) populations in the laboratory. *J Med Entomol* 2001;38:548–56.
- Tichy H, Kallina W. Sensitivity of honeybee hygrometers to slow humidity changes and temporal humidity variation detected in high resolution by mobile measurements. *PLoS One* 2014;9:e99032.
- Do TT, Martens P, Luu NH, *et al*. Climatic-driven seasonality of emerging dengue fever in Hanoi, Vietnam. *BMC Public Health* 2014;14:1078.

42. Wesolowski A, Qureshi T, Boni MF, *et al.* Impact of human mobility on the emergence of dengue epidemics in Pakistan. *Proc Natl Acad Sci U S A* 2015;112:11887–92.
43. Hales S, de Wet N, Maindonald J, *et al.* Potential effect of population and climate changes on global distribution of dengue fever: an empirical model. *Lancet* 2002;360:830–4.
44. Kraemer MU, Sinka ME, Duda KA, *et al.* The global distribution of the arbovirus vectors *Aedes aegypti* and *Ae. albopictus*. *Elife* 2015;4:1–18.
45. Gratz NG. Critical review of the vector status of *Aedes albopictus*. *Med Vet Entomol* 2004;18:215–27.
46. Simard F, Nchoutpouen E, Toto JC, *et al.* Geographic distribution and breeding site preference of *Aedes albopictus* and *Aedes aegypti* (Diptera: culicidae) in Cameroon, Central Africa. *J Med Entomol* 2005;42:726–31.
47. Li Y, Kamara F, Zhou G, *et al.* Urbanization increases *Aedes albopictus* larval habitats and accelerates mosquito development and survivorship. *PLoS Negl Trop Dis* 2014;8:e3301.
48. Fischer D, Thomas SM, Neteler M, *et al.* Climatic suitability of *Aedes albopictus* in Europe referring to climate change projections: comparison of mechanistic and correlative niche modelling approaches. *Euro Surveill* 2014;19:20696.
49. Mughini-Gras L, Mulatti P, Severini F, *et al.* Ecological niche modelling of potential West Nile virus vector mosquito species and their geographical association with equine epizootics in Italy. *Ecohealth* 2014;11:120–32.
50. Fatima SH, Atif S, Rasheed SB, *et al.* Species distribution modelling of *Aedes aegypti* in two dengue-endemic regions of Pakistan. *Trop Med Int Health* 2016;21:427–36.
51. Caminade C, Medlock JM, Ducheyne E, *et al.* Suitability of European climate for the Asian tiger mosquito *Aedes albopictus*: recent trends and future scenarios. *J R Soc Interface* 2012;9:2708–17.
52. Ducheyne E, Tran Minh NN, Haddad N, *et al.* Current and future distribution of *Aedes aegypti* and *Aedes albopictus* (Diptera: Culicidae) in WHO Eastern Mediterranean Region. *Int J Health Geogr* 2018;17:4.
53. Kraemer MU, Sinka ME, Duda KA, *et al.* The global compendium of *Aedes aegypti* and *Ae. albopictus* occurrence. *Sci Data* 2015;2:150035.
54. Hijmans RJ, Cameron SE, Parra JL, *et al.* Very high resolution interpolated climate surfaces for global land areas. *International Journal of Climatology* 2005;25:1965–78.
55. World Meteorological Organization. Meeting of the Commission for Climatology (CCL) expert team on climate risk and sector-specific climate indices (ET-CRSCI), 2012.
56. Huete AR, Didan K, Van Leeuwen W. Modis vegetation index. *Veg Index Phenol Lab* 1999;3:129.
57. Weiss DJ, Atkinson PM, Bhatt S, *et al.* An effective approach for gap-filling continental scale remotely sensed time-series. *ISPRS J Photogramm Remote Sens* 2014;98:106–18.
58. Jarvis A, Reuter HI, Nelson A, *et al.* Hole-filled SRTM for the globe Version 4, available from the CGIAR-CSI SRTM 90m Database. 2008. <http://srtm.csi.cgiar.org>
59. CIESIN. *Gridded population of the world, version 4 (GPWv4): population density*. Palisades, NY: NASA Socioeconomic Data and Applications Center (SEDAC), Columbia University, 2016.
60. Uchida H, Nelson A. Agglomeration index : towards a new measure of urban. *World Dev Rep Reshaping Econ Geogr* 2008.
61. Core Team R. R: A language and environment for statistical computing. R Found. Stat. Comput. Vienna, Austria. 2016. <https://www.R-project.org/>
62. Elith J, H. Graham C, P. Anderson R, *et al.* Novel methods improve prediction of species' distributions from occurrence data. *Ecography* 2006;29:129–51.
63. Elith J, Phillips SJ, Hastie T, *et al.* A statistical explanation of MaxEnt for ecologists. *Diversity and Distributions* 2011;17:43–57.
64. Phillips SJ, Anderson RP, Schapire RE. Maximum entropy modeling of species geographic distributions. *Ecol Modell* 2006;190:231–59.
65. Ridgeway G. gbm: Generalized Boosted Regression Models. 2015. <https://CRAN.R-project.org/package=gbm>
66. Hijmans RJ, Phillips S, Leathwick J, *et al.* *Dismo: species distribution modeling. R package version 1.1-4*, 2017.
67. Elith J, Leathwick JR, Hastie T. A working guide to boosted regression trees. *J Anim Ecol* 2008;77:802–13.
68. Barbet-Massin M, Jiguet F, Albert CH, *et al.* Selecting pseudo-absences for species distribution models: how, where and how many? *Methods Ecol Evol* 2012;3:327–38.
69. ECDC, EFSA. VectorNet: A European network for sharing data on the geographic distribution of arthropod vectors, transmitting human and animal disease agents. 2017. <http://ecdc.europa.eu/en/healthtopics/vectors/vectornet>
70. Pandey A, Mubayi A, Medlock J. Comparing vector–host and SIR models for dengue transmission. *Math Biosci* 2013;246:252–9.
71. Tjaden NB, Suk JE, Fischer D, *et al.* Modelling the effects of global climate change on Chikungunya transmission in the 21st century. *Sci Rep* 2017;7:3813.
72. Rochlin I, Ninivaggi DV, Hutchinson ML, *et al.* Climate change and range expansion of the Asian tiger mosquito (*Aedes albopictus*) in Northeastern USA: implications for public health practitioners. *PLoS One* 2013;8:e60874.
73. Tsuda Y, Suwonkerd W, Chawprom S, *et al.* Different spatial distribution of *Aedes aegypti* and *Aedes albopictus* along an urban-rural gradient and the relating environmental factors examined in three villages in northern Thailand. *J Am Mosq Control Assoc* 2006;22:222–8.
74. Bar-Zeev M. The effect of temperature on the growth rate and survival of the immature stages of *Aedes aegypti* (L.). *Bull Entomol Res* 1958;49:157.
75. Christophers SR. *Aedes aegypti* (L.) the yellow fever mosquito: its life history, bionomics and structure. Cambridge, UK: Cambridge University Press, 1960.
76. Wu F, Liu Q, Lu L, *et al.* Distribution of *Aedes albopictus* (Diptera: Culicidae) in northwestern China. *Vector Borne Zoonotic Dis* 2011;11:1181–6.
77. Humphrey JM, Cleton NB, Reusken CB, *et al.* Dengue in the Middle East and North Africa: a systematic review. *PLoS Negl Trop Dis* 2016;10:e0005194.
78. Fischer D, Thomas SM, Niemitz F, *et al.* Projection of climatic suitability for *Aedes albopictus* Skuse (Culicidae) in Europe under climate change conditions. *Glob Planet Change* 2011;78:54–64.
79. Chan KL, Ho BC, Chan YC. *Aedes aegypti* (L.) and *Aedes albopictus* (Skuse) in Singapore City. 2. Larval habitats. *Bull World Health Organ* 1971;44:629–33.
80. Lounibos LP, Bargielowski I, Carrasquilla MC, *et al.* Coexistence of *Aedes aegypti* and *Aedes albopictus* (Diptera: Culicidae) in Peninsular Florida two decades after competitive displacements. *J Med Entomol* 2016;53:1385–90.
81. Mulligan K, Dixon J, Sinn CL, *et al.* Is dengue a disease of poverty? A systematic review. *Pathog Glob Health* 2015;109:10–18.
82. Gubler DJ. Dengue, urbanization and globalization: the unholy trinity of the 21st century. *Trop Med Health* 2011;39:S3–11.
83. Landau KI, van Leeuwen WJ. Fine scale spatial urban land cover factors associated with adult mosquito abundance and risk in Tucson, Arizona. *J Vector Ecol* 2012;37:407–18.
84. Juliano SA, O'Meara GF, Morrill JR, *et al.* Desiccation and thermal tolerance of eggs and the coexistence of competing mosquitoes. *Oecologia* 2002;130:458–69.
85. Sutcliffe J, Colborn KL. Video studies of passage by *Anopheles gambiae* mosquitoes through holes in a simulated bed net: effects of hole size, hole orientation and net environment. *Malar J* 2015;14:199.
86. Lambrechts L, Paaijmans KP, Fansiri T, *et al.* Impact of daily temperature fluctuations on dengue virus transmission by *Aedes aegypti*. *Proc Natl Acad Sci U S A* 2011;108:7460–5.
87. Manabe S, Stouffer RJ. A CO₂-climate sensitivity study with a mathematical model of the global climate. *Nature* 1979;282:491–3.
88. Juliano SA, Lounibos LP, Philip Lounibos L. Ecology of invasive mosquitoes: effects on resident species and on human health. *Ecol Lett* 2005;8:558–74.
89. Dickens BL, Yang J, Cook AR, *et al.* Time to empower release of insects carrying a dominant lethal and wolbachia against zika. *Open Forum Infect Dis* 2016;3:ofw103.
90. Altizer S, Ostfeld RS, Johnson PT, *et al.* Climate change and infectious diseases: from evidence to a predictive framework. *Science* 2013;341:514–9.