

Phyllomedusa megacephala (Miranda-Ribeiro 1926) (Amphibia, Anura, Hylidae, Phyllomedusinae): Distribution extension, new state record and map.

Reuber Albuquerque Brandão^{1*}, Felipe Sá Fortes Leite², Renata Dias Françoso³, Julián Faivovich⁴

The *Phyllomedusa hypochondrialis* group occurs in cis-Andean South America and is currently composed of nine species (*P. palliata*, *P. azurea*, *P. nordestina*, *P. hypochondrialis*, *P. rohdei*, *P. ayeaye*, *P. centralis*, *P. megacephala*, and *P. oreades*). Faivovich et al. (2010) studied the phylogenetic relationships of the subfamily Phyllomedusinae, and corroborated the monophyly of the *P. hypochondrialis* group. Their study found two major well-supported clades within the group, which comprise a clade of the lowland species (*P. palliata*, *P. azurea*, *P. nordestina*, and *P. hypochondrialis*) and a clade composed of highland species from central-eastern Brazil (*P. ayeaye*, *P. centralis*, *P. megacephala*, and *P. oreades*) including *P. rohdei*, a species from the Atlantic Rain Forest. Within the latter clade, *P. megacephala* was shown to be related to *P. rohdei* and a yet undescribed species from the Atlantic Forest. The other highland species form a second minor clade. The species comprising the highland clade of Faivovich et al. (2010) are characterized by 1) displaying a reticulated pattern on their flanks and surfaces of the limbs; 2) use of lotic habitats for reproduction (typically small creeks and streams); and 3) occurrence in open physiognomies located over 800m a.s.l. at interior Brazilian mountain ranges (Brandão et al., 2009). The distribution of these

mountain species remains poorly known (Faivovich et al., 2010).

Phyllomedusa megacephala (Miranda-Ribeiro 1926) is a medium-sized species, with males displaying total lengths between 36.1 to 43.3mm in contrast to females, which measure between 41.6 to 49.1mm (Caramaschi, 2006). In this note we present several new localities for *P. megacephala*, including the first records within the Espinhaço mountain range in the state of Bahia (Table 1). All localities where *P. megacephala* was collected are above 1000m a.s.l. and are covered by open fields interspersed with rocky outcrops in the vicinity of small creeks and streams. *Phyllomedusa megacephala* is widely distributed along the Espinhaço range, from the municipality of Santana do Riacho (State of Minas Gerais), to the municipality of Igarorã, in the state of Bahia. The species occurs in several protected areas along its range.

Acknowledgments. RAB thanks Fundação Grupo O Boticário de Proteção à Natureza which provided funding for the project “Conservação, Ecologia e Taxonomia das Espécies de *Phyllomedusa* do grupo *hypochondrialis*”. FSFL thanks Programa Biota Minas/FAPEMIG for partially funding fieldwork under the Project “Anfibios e répteis da Serra do Espinhaço: Preenchendo as lacunas do conhecimento de quatro áreas prioritárias para a

1 Universidade de Brasília, Laboratório de Fauna e Unidades de Conservação, Departamento de Engenharia Florestal, Campus Universitário Darcy Ribeiro, CEP 70910-900. Brasília, DF, Brasil.

2 Departamento de Zoologia, Instituto de Ciências Biológicas, Universidade Federal de Minas Gerais, 31270-901, Belo Horizonte, Minas Gerais, Brasil.

3 Universidade de Brasília, Laboratório de Planejamento para Conservação da Biodiversidade, Departamento de Zoologia, Campus Universitário Darcy Ribeiro, CEP 70910-900, Brasília, DF, Brasil.

4 División Herpetología, Museo Argentino de Ciencias Naturales-CONICET, Angel Gallardo 470, C1405DJR, Buenos Aires, Argentina.

*Corresponding author; e-mail: reuberbrandao@yahoo.com.br



Figure 1. Adult female of *Phyllomedusa megacephala* (CHUNB 69326) from Igarorã Municipality, State of Bahia (Photo: R.A. Brandão).

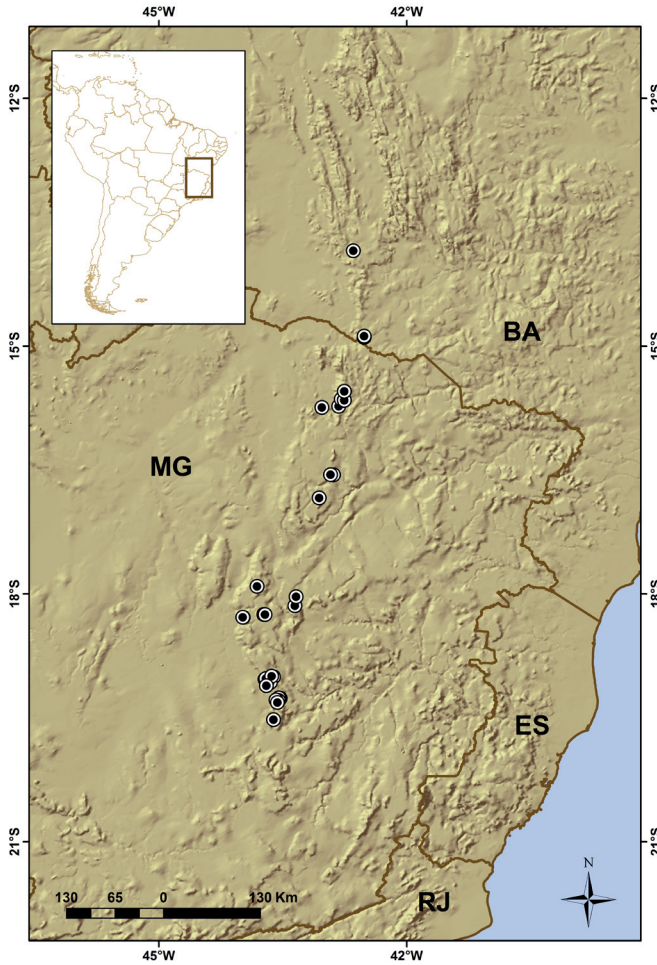


Figure 2. Distribution map of *Phyllomedusa megacephala*. Abbreviations of Brazilian states: BA, Bahia; ES: Espírito Santo; MG: Minas Gerais; RJ: Rio de Janeiro. (Map by Renata Franço).

conservação da herpetofauna de Minas Gerais”, FAPEMIG/Vale project ‘Taxonomia e distribuição geográfica de anfíbios do Quadrilátero Ferrífero, Minas Gerais: desenvolvendo ferramentas para aumentar a eficiência do processo de licenciamento ambiental’, and to CNPq and FAPEMIG for a fellowship; JF thanks ANPCyT 2007-2202, 2011-1895, UBACyT 20020090200727, and Consejo Nacional de Investigaciones Científicas y Técnicas (CONICET)..

References

- Brandão, R.A., Álvares, G.F.R., Crema, A., Zerbini G.J. (2009): Natural history of *Phyllomedusa centralis* Bokermann 1965 (Anura: Hylidae: Phyllomedusinae): tadpole and calls. *South American Journal of Herpetology* **4**: 61-68.
- Caramaschi, U. (2006): Redefinição do grupo de *Phyllomedusa hypochondrialis*, com redescritção de *P. megacephala* (Miranda-Ribeiro, 1926), revalidação de *P. azurea* Cope, 1862 e descrição de uma nova espécie (Amphibia, Anura, Hylidae). *Arquivos do Museu Nacional, Rio de Janeiro* **64**: 159-179.
- Faivovich, J., Haddad, C.F.B., Baêta, D., Jungfer, K-H, Álvares, G.F.R., Brandão, R.A., Sheil, C., Barrientos, L.S., Barrio-Amorós, C.L., Cruz, C.A.G., Wheeler, W.C. (2010): The phylogenetic relationships of the charismatic poster frogs, Phyllomedusinae (Anura, Hylidae). *Cladistics* **26**: 227–261.

Table 1. Locality, habitat type, and altitude of all known geographical records of *Phyllomedusa megacephala*.

Municipality	State	Locality	Lat	Long	Altitude
Igaporã	BA	Torres na Estrada entre Igaporã e Caetité.	-13.8458	-42.6497	1070
Jacaraci	BA	Baixa da Anta - Morro do Chapéu	-14.8934	-42.5169	1159
Jacaraci	BA	Baixa da Anta - Morro do Chapéu	-14.8807	-42.5172	1200
Botumirim	MG	Serra de Botumirim	-16.8379	-43.0611	1400
Buenópolis	MG	Parque Nacional da Sempre Vivas	-17.9089	-43.8145	1300
Conceição do Mato Dentro	MG	Serra do Intendente, alto do cânion do Peixe Tolo	-19.0091	-43.6278	1250
Conselheiro Mata	MG		-18.2830	-43.9861	1100
Diamantina	MG	Serra da Anta	-18.2499	-43.7168	1420
Diamantina	MG	Serra da Anta	-18.2487	-43.7314	1420
Grão Mogol	MG		-16.5594	-42.8897	1251
Grão Mogol	MG		-16.5564	-42.9242	1200
Jaboticatubas	MG		-19.5217	-43.6156	1250
Morro do Pilar	MG	Parque Nacional da Serra do Cipó	-19.2625	-43.5339	1200
Porteirinha	MG		-15.7433	-43.0283	1350
Porteirinha	MG		-15.7275	-42.8261	1290
Rio Pardo de Minas	MG	Parque Estadual de Serra Nova	-15.6614	-42.7656	1200
Rio Pardo de Minas	MG	Parque Estadual de Serra Nova	-15.6614	-42.7656	1290
Rio Pardo de Minas	MG	Parque Estadual de Serra Nova	-15.6560	-42.7583	1310
Rio Pardo de Minas	MG	Parque Estadual de Serra Nova	-15.6423	-42.7946	1210
Rio Pardo de Minas	MG	Parque Estadual de Serra Nova	-15.6423	-42.7946	1310
Rio Pardo de Minas	MG		-15.5486	-42.7567	1160
Santana do Riacho	MG	Parque Nacional da Serra do Cipó	-19.3156	-43.5672	1240
Santana do Riacho	MG	Parque Nacional da Serra do Cipó	-19.2902	-43.5619	1250
Santana do Riacho	MG	Serra do Cipó	-19.2891	-43.5560	1200
Santana do Riacho	MG	Serra do Cipó	-19.2854	-43.5764	1200
Santana do Riacho	MG	Serra do Cipó	-19.2849	-43.5823	1200
Santana do Riacho	MG	Entre Vespasiano e Conceição do Mato Dentro, Km110-132.	-19.2849	-43.5823	1200
Santana do Riacho	MG		-19.2833	-43.5833	1040
Santana do Riacho	MG	Serra do Cipó	-19.2587	-43.5513	1200
Santana do Riacho	MG		-19.1106	-43.7017	1220
Santana do Riacho	MG	Pico do Breu	-19.0726	-43.6537	1350
Santana do Riacho	MG	Lapinha da Serra/RPPN Ermo das Gerais	-19.0323	-43.7182	1300
Santana do Riacho	MG	Lapinha da Serra/RPPN Ermo das Gerais	-19.0257	-43.7081	1330
São Gonçalo do Rio Preto	MG		-18.1441	-43.3565	1100
São Gonçalo do Rio Preto	MG		-18.0339	-43.3417	1100