

# Open Research Online

---

The Open University's repository of research publications and other research outputs

## GravityCam: higher resolution visible wide-field imaging

### Conference or Workshop Item

How to cite:

Skottfelt, Jesper; Snodgrass, Colin; MacKay, Craig D.; Dominik, Martin and Jørgensen, Uffe G. (2018). GravityCam: higher resolution visible wide-field imaging. In: Ground-based and Airborne Instrumentation for Astronomy VII, Proceedings, Society of Photo-Optical Instrumentation Engineers, article no. 107025O (2018).

For guidance on citations see [FAQs](#).

© 2018 Society of Photo-Optical Instrumentation Engineers (SPIE)

Version: Accepted Manuscript

Link(s) to article on publisher's website:  
<http://dx.doi.org/doi:10.1117/12.2309930>

---

Copyright and Moral Rights for the articles on this site are retained by the individual authors and/or other copyright owners. For more information on Open Research Online's [data policy](#) on reuse of materials please consult the policies page.

---

[oro.open.ac.uk](http://oro.open.ac.uk)

# GravityCam: Higher Resolution Visible Wide-Field Imaging

Jesper Skottfelt<sup>a</sup>, Craig Mackay<sup>b</sup>, Colin Snodgrass<sup>a</sup>, Martin Dominik<sup>c</sup>, and Uffe G. Jørgensen<sup>d</sup>

<sup>a</sup>School of Physical Sciences, The Open University, Milton Keynes MK7 6AA, UK,

<sup>b</sup>Institute of Astronomy, University of Cambridge, Cambridge CB03 0HA, UK,

<sup>c</sup>Centre for Exoplanet Science, SUPA School of Physics & Astronomy, University of St Andrews, North Haugh St Andrews, KY16 9SS, UK,

<sup>d</sup>Niels Bohr Institute & Centre for Star and Planet Formation, University of Copenhagen, Øster Voldgade 5, 1350 Copenhagen, Denmark

## ABSTRACT

The limits to the angular resolution has, during the latest 70 years, been obtainable from the ground only through extremely expensive adaptive optics facilities at large telescopes, and covering extremely small spatial areas per exposure. Atmospheric turbulence therefore limits image quality to typically 1 arcsec in practice. We have developed a new concept of ground-based imaging instrument called GravityCam capable of delivering significantly sharper images from the ground than is normally possible without adaptive optics. The acquisition of visible images at high speed without significant noise penalty has been made possible by advances in optical and near IR imaging technologies. Images recorded at high speed can be aligned before combination and can yield a 3-5 fold improvement in image resolution, or be used separately for high-cadence photometry. Very wide survey fields are possible with widefield telescope optics. GravityCam is proposed to be installed at the 3.6m New Technology Telescope (NTT) at the ESO La Silla Observatory in Chile, where it will greatly accelerate the rate of detection of Earth sized planets by gravitational microlensing. GravityCam will also improve substantially the quality of weak shear studies of dark matter distribution in distant clusters of galaxies and provide a vast dataset for asteroseismology studies. In addition, GravityCam promises to generate a unique data set that will help us understand of the population of the Kuiper belt and possibly the Oort cloud.

**Keywords:** exoplanet detection, gravitational microlensing, weak shear, asteroseismology, Kuiper belt, EMC-CDs, CMOS detectors.

## 1. INTRODUCTION

Over the years, astronomers have discovered a great deal from using survey data from a variety of sources. One of the first was the original Photographic Sky Surveys carried out by dedicated Schmidt telescopes in both North and South Hemispheres.<sup>1</sup> Today the Sloan Digital Sky Survey (SDSS)<sup>2</sup> made with a 2.5 m telescope with a very wide field of view has provided high quality digital data of a significant part of the northern sky. The Dark Energy Survey (DES)<sup>3</sup> has been carried out on a modified 4 m class telescope in Chile using a large area detector to image a substantial part of the southern hemisphere. Additional surveys are planned. For example, the Large Synoptic Survey Telescope,<sup>4</sup> which is currently in the construction phase, also in Chile, uses an 8 m class telescope with a 3.5 field of view to image large areas of the sky repeatedly with relatively short exposures. One of the principal programs of the LSST will be to survey much of the sky every few nights to allow the detection of exploding supernova in distant galaxies as well as earth-approaching objects.

There have been very significant improvements in the quality of detectors used for astronomy and in particular the charge coupled devices (CCDs) and CMOS imaging sensors (CIS). The quality, consistency and repeatability of these devices has allowed large area detector arrays to be built with quantum efficiencies approaching 100%. Detectors are available with broad spectral response and low read-out noise. What has not changed in the last 70 years is the capacity of these surveys to deliver images any sharper than those of photographic plates.

---

Further author information: (Send correspondence to J.S.)

J.S.: E-mail: Jesper.Skottfelt@open.ac.uk, Telephone: +44 (0)1908 652 698

Improvements in detector technology have allowed us to detect objects at ever greater distances but increasingly those objects are seen as essentially unresolved by ground-based telescopes. We know from Hubble Space Telescope images that higher angular resolution makes an enormous difference to our capacity to understand these remarkable objects. Even within our own Galaxy there are many regions where confusion dominates because stars are so close together. Advances in adaptive optics technologies have allowed higher resolution images to be obtained over very small fields of view, typically a few arcsec in the visible and therefore of no help in delivering sharper images over a substantial field of view. It is this deficiency that GravityCam is intended to overcome. Our goal is not to produce diffraction limited images but simply images that are sharper than normally obtained from the ground. There are several key scientific programmes that will benefit substantially from such an instrument and are described below in more detail. One of the most exciting is the detection of good numbers of lunar-mass exoplanets and moons by surveying tens of millions of stars in the bulge of our own Galaxy. We can also track the distribution of dark matter in distant clusters of galaxies by looking at the distortions in galaxy images. GravityCam can provide a unique new dataset by surveying millions of stars with high time resolution to enable astroseismologists to better understand the structure of the interior of those stars. It can also allow a detailed survey of Kuiper belt objects.

## 2. SUMMARY OUTLINE OF GRAVITYCAM

One of the most effective ways of improving the detail in astronomical images is to use some of the methods of Lucky Imaging.<sup>4,5</sup> Here we take images rapidly (10-30 Hz), and identify the tip-tilt offset by measuring the position of a bright compact object in the field. This technique almost completely eliminates the tip tilt distortions caused by atmospheric turbulence. The turbulent power spectrum is strongest on the largest scales. In this way we can improve the median seeing measured on a typical astronomical observatory by a factor between 2.5 and 3. The next level of disturbance of the wavefront entering the telescope is defocus. If we use a smaller fraction of the images and add the sharpest images together we find that image resolution is improved further to a total of a factor of 4 with a 50% selection. Even more restrictive selection can ultimately assure diffraction limited images.

With ground-based telescopes of size similar to Hubble (2.5 m) Lucky Imaging can produce close to Hubble resolution (0.1 arcsec) with selections of 20-50%. However as telescopes become larger, the chance of getting a really sharp image become rapidly smaller. It is only possible to get even higher resolution on bigger telescopes using other techniques such as combining Lucky Imaging with low order adaptive optics.<sup>6</sup> These approaches are beyond the scope of this paper. However we propose siting GravityCam on a somewhat bigger telescope such as the NTT 3.6 m in La Silla, Chile (Fig. 1). From our experience on that telescope we find that 100% selection yields about 0.3 arcsecond resolution, and 50% selection yields better than  $\sim 0.2$  arcsec. This site at La Silla has a median seeing of about 0.75 arcsec. The high frame-rate images can also be used separately or binned to the necessary S/N to get high-cadence and wide-field photometry.

A key requirement is that the detectors used must be able to run at frame rates  $>10$  Hz with negligible readout noise. This will enable very faint targets to be detected. Recently, the development of electron multiplying CCDs (EMCCDs) made this possible and EMCCDs were quickly taken up for astronomy.<sup>7</sup> An EMCCD has an extended readout register that multiplies the signal before it is read out. This means that the readout noise becomes negligible and this enables photon counting operation. Even if photon counting is not needed, it is possible to reduce the read noise to a level that is acceptable. There has been great progress more recently in the development of high-performance CMOS Imaging Sensors (CIS). With the right kind of architecture, CIS devices have been made with very low read-out noise levels ( $\sim 1$  electron RMS) while running at fast frame rates (10-30 Hz). These CIS devices have many of the excellent characteristics of CCDs such as high quantum efficiency, good cosmetic quality, and high and linear signal capacity. CIS devices have a further advantage over EMCCDs in that they are capable of being butted together on 2 or 3 edges. EMCCDs have a significant part of the silicon area devoted to a storage region and in practice will only cover about 1/6 of the area with sensitive silicon. This means that to fully cover a field, an EMCCD based GravityCam would have to combine 6 individual pointings. In comparison, a CIS based GravityCam would make it possible to get up to values in excess of 85% and survey an entire field in a single pointing.

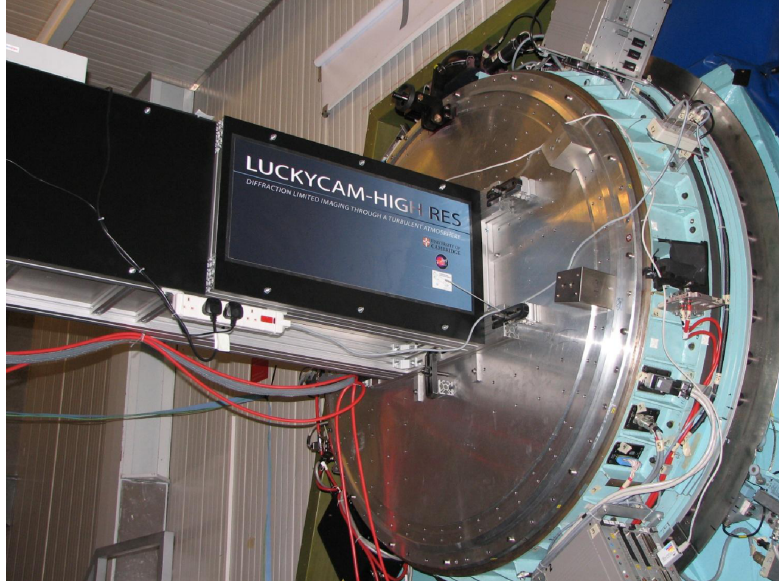


Figure 1. Prototype of the GravityCam detector mounted on one of the Nasmyth platforms of the NTT 3.6 m telescope of European Southern Observatory in La Silla, Chile. This consisted of a single EMCCD behind a simple crossed prism atmospheric dispersion corrector being run in the standard lucky imaging mode. There is considerable space to mount an instrument on the telescope which has extremely high optical quality and is located in a top astronomical site.

### 3. PLANET DEMOGRAPHICS DOWN TO LUNAR MASS ACROSS THE MILKY WAY THROUGH GRAVITATIONAL MICROLENSING

Within foreseeable time, gravitational microlensing<sup>8,9</sup> remains the only approach suitable to obtain population statistics of cool low-mass planets throughout the Milky Way, orbiting Galactic disk or bulge stars (two populations with notably different metallicity distributions). A GravityCam microlensing survey will provide sensitivity down to Lunar mass, a territory widely considered to be reserved for space missions like WFIRST.<sup>10</sup>

The gravitational microlensing effect is characterised by the transient brightening of an observed star due to the gravitational bending of its light by another star that happens to pass in the foreground. This leads to a symmetric achromatic characteristic light curve (see Fig. 2), whose duration is an indicator of the mass of the deflector.

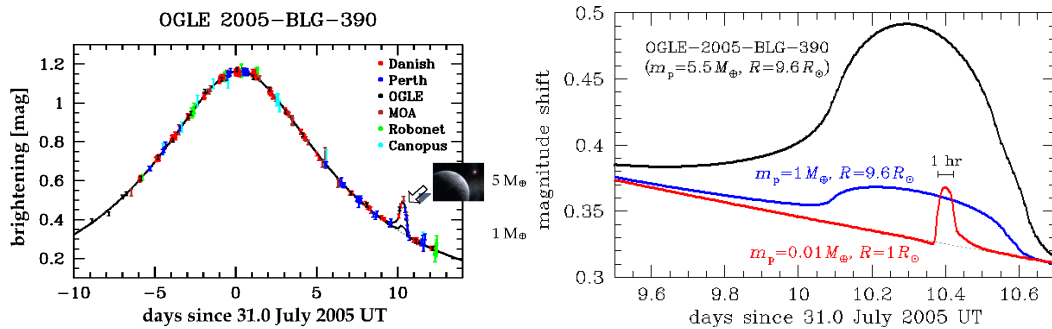


Figure 2. (left) Model light curve and data acquired with 6 different telescopes of microlensing event OGLE-2005-BLG-390, showing the small blip that revealed planet OGLE-2005-BLG-390Lb<sup>11</sup> with about 5 Earth masses. An Earth-mass planet in the same spot would have led to a 3% deviation. (right) Signature of planet OGLE-2005-BLG-390Lb with  $m_p = 5.5 M_\oplus$  and a source star with  $R = 9.6 R_\odot$ , together with those for an Earth-mass planet in the same spot, and a Lunar-mass body with a Sun-like star. Even the latter would be detectable with 2% photometry and 15 min cadence<sup>12</sup>

A planet orbiting the foreground ('lens') star may reveal its presence by causing a further signature that lasts between days for Jupiter-mass planets down to hours for planets of Earth mass or below.<sup>13,14</sup> Shorter signals do not arise because of the finite angular size of the source star, whose motion relative to the foreground 'lens' star limits the signal amplitude by smearing out the effect that would arise for a point-like source star.<sup>15,16</sup> Extending the sensitivity to less massive planets therefore means to go for smaller (and thereby fainter) source stars.<sup>10</sup> GravityCam will make the crucial difference by resolving main-sequence stars in the crowded fields of the Galactic bulge (see Fig. 3). We can go about 4 magnitudes deeper than the current state-of-the-art survey OGLE-IV<sup>17</sup> for the same signal-to-noise ratio and exposure time of 2 min, achieving *leq* 5% photometry for the full range  $19 < I < 22$ . With stars at  $I \sim 16$  being about 10 times larger than stars at  $I \sim 20$ , we gain a factor 100 in planet mass at the same sensitivity (see Fig. 4).

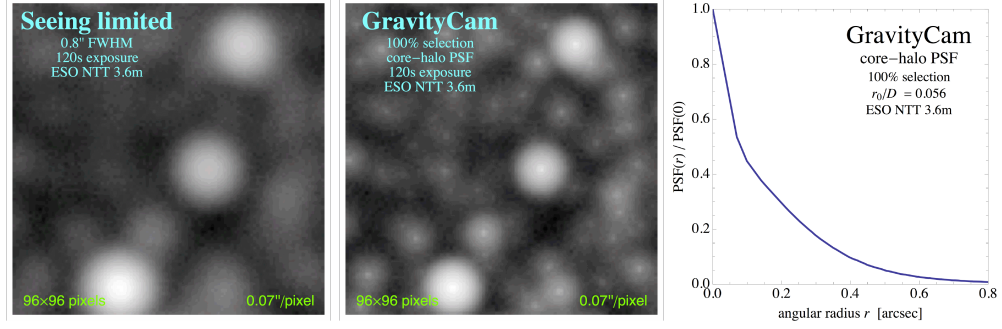


Figure 3. Simulated ESO NTT images of about  $7'' \times 7''$  size for 2 min exposures, showing the improvement resulting from GravityCam as compared to being limited by an average  $0.8''$  FWHM, where the core-halo point spread function for 100% frame selection shown on the right has been adopted, while GravityCam gives  $0.07''/\text{pixel}$ .

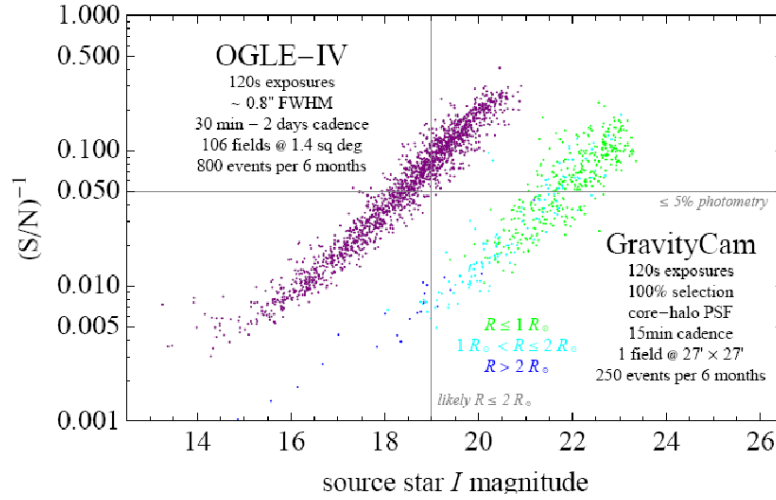


Figure 4. Comparison of performance between OGLE-IV and a microlensing survey with GravityCam on the ESO NTT that uses the same exposure time of 2 min. A single field of  $27' \times 27'$  can be monitored at 15 min cadence, sufficient to characterise deviations even by Lunar-mass bodies. While OGLE-IV misses out on providing  $\leq 5\%$  photometry on main-sequence source stars, small variations in the brightness of such small stars can be well-monitored with GravityCam.

## 4. SCIENCE WITH GRAVITYCAM

### 5. TRACING THE DARK MATTER IN THE UNIVERSE BY GRAVITATIONAL LENSING

The fact that matter bends electromagnetic radiation, as predicted by Einsteins General Theory of Relativity<sup>8</sup> and known as gravitational lensing, offers a unique opportunity to study the distribution of Dark Matter in the Universe, which is key to our understanding of structure formation. The matter content of galaxy clusters can be inferred from two major signatures: strong lensing, providing multiple, highly-magnified and distorted images of distant cosmic sources, and weak lensing, giving a sample of single slightly distorted images of many sources for statistical analysis.<sup>18,19</sup>

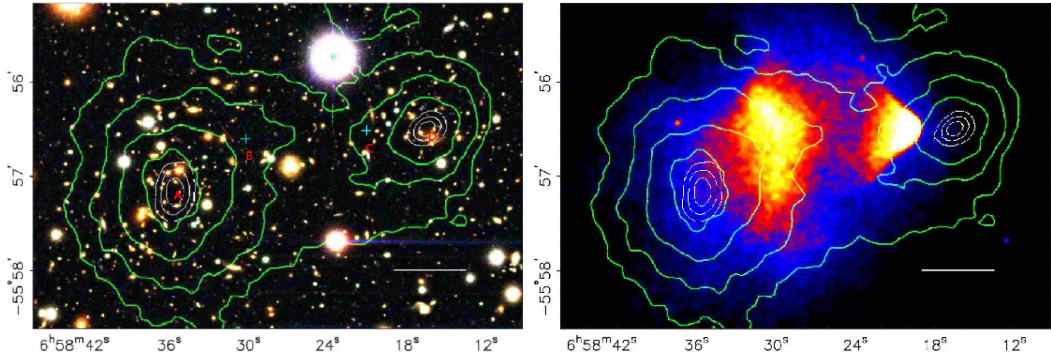


Figure 5. The Bullet Cluster; left panel: optical image with contours showing projected mass derived from lensing; right panel: same lensing mass map contours now with X-ray image showing location of hot gas (dominant component of normal matter). As found by [18], the mass budget is dominated by dark matter. The projected mass derived from lensing with the HST is excellent but with ground based studies it is extremely hard to recover with any accuracy.

Our ability to quantify these signatures crucially depends on the angular resolution of the underlying images, while accuracy of the lens mass reconstruction also depends on the number density of distant background sources. In fact, this technique is calling for the deconvolution of images only slightly bigger than the atmospheric seeing size of  $\sim 1 - 2''$  when looking for distortions that are perhaps 1/10 of that size. GravityCam would not only clearly outperform any other ground-based instrument by providing high angular resolution ( $\sim 0.15''$ ) for faint objects over a wide field, but also compare favourably to space-based facilities. Its resolution and sensitivity would be comparable to the ACS instrument on HST, while covering a wider field of view (see Fig. 5).

A specific instrumental challenge arises from the so-called brighter-fatter-effect (BFE), referring to the phenomenon that charge coupled device detectors produce bigger when the object is brighter.<sup>20</sup> This affects reference stars used for the deconvolution process and also changes the apparent ellipticity of the image significantly. We expect this to be an aspect on which GravityCam will fare better than ESAs Euclid spacecraft [20], a 1.2 m diameter telescope with an array of CCD detectors covering a very similar field of view. With Euclid being located at the L2 position, communication limitations mean that exposure times will be relatively long so the images are likely to suffer to some extent from the BFE.

The other significant difference between GravityCam on the ESO NTT and Euclid is that the NTT has 9 times the collecting area, while the sky in space is not that much darker in the visible than it is from the ground on a good site. GravityCam would enable an unprecedented number of distant galaxies to be used, permitting a more far-reaching three-dimensional description of the dark matter distribution in the Universe.

GravityCam will be ideally suited for studies of cluster substructure, along with observed higher-order shape distortions of galaxy images,<sup>21</sup> overcoming current respective limitations of space-based and ground-based facilities and combining their advantages (see Fig. 6).

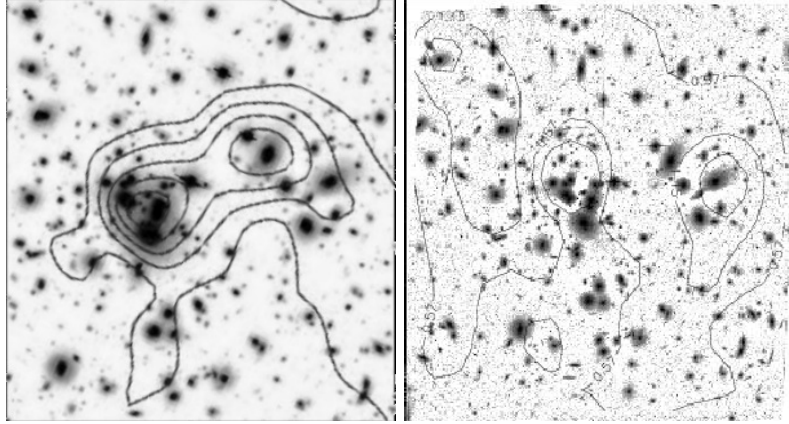


Figure 6. Analysis of the distortion signal to determine the distribution of substructure in the galaxy cluster Abell 1689 using a ground-based wide-field image from Subaru<sup>22</sup> (left) and a deep space-based HST/ACS image (right)<sup>23</sup> with contours showing the reconstructed mass distribution. GravityCam images would be both of high angular resolution and deep (as the space-based data), and at the same time cover a large area like the ground-based data (tens of arc minutes compared to a few arc minutes as HST/ACS).

## 6. DETAILED DESCRIPTION OF THE INSTRUMENT

The largest telescopes are generally designed to deliver relatively narrow fields of view. However, for a survey instrument field of view is important. GravityCam may be mounted on any telescope with a wide field of view. Typical detector pixel sizes are well matched to a focal plane scale in the region of  $5''/\text{mm}$ . We suppose here that GravityCam is mounted at the Naysmith focus of the NTT telescope of the European southern Observatory at La Silla Chile. This telescope has a flat  $0.5^\circ$  by  $0.5^\circ$  field of view with Ritchey-Chretien optics. The plate scale is  $5''/36/\text{mm}$ . This means there is no need to use any reimaging optics and the detector is placed essentially in the normal focal plane of the telescope. We use an array of detectors close-packed and operating in synchronism to minimise inter-detector interference (Fig. 7). In order to give good quality images free from residual chromatic aberration from the atmosphere light first goes through an atmospheric dispersion corrector. This is particularly important in crowded field imaging as well as where accurate measurement of the shape of the galaxy is critical. Telescopes such as the LSST<sup>4</sup> that hope to avoid using an ADC are likely to have significant problems particularly with studies such as the weak shear gravitational lensing program described above. In front of the detectors may be mounted interchangeable filter units should they be required. It is worth mentioning that gravitational lensing is a completely achromatic process and, unless there is a good scientific case to use a filter, filters may be dispensed with in order to give the highest sensitivity for the survey in question. However in many cases it will be important to get detailed information of the stars and galaxies being targeted. That will require filters that give that capacity to be available. For example, in order to understand the internal structure of stars, asteroeismologists need to know the colours, effective temperature,  $\log(g)$  and metallicities of the stars being studied. This will require the availability of appropriate filters for these measurements.

The instrument enclosure of GravityCam is mounted on the NTT via its standard Nasmyth platform image rotator (see Fig. 1). Otherwise only a filter changer is needed. The detectors are cooled to minimise dark current to a temperature between  $-80$  and  $-100^\circ\text{C}$ . The detector package will therefore need to be contained within a vacuum dewar enclosure, and cooled with a recirculating chiller or with liquid nitrogen. Driver electronics will be needed for each detector unit and these need to be designed in a modular fashion to allow easy replacement in case of module failure. The volume of the entire GravityCam package mounted on the Naysmith platform of the NTT might be about one cubic metre. The computer system necessary to serve the large number of detectors would be very much bigger, but does not need to be located particularly near to the detector package.



Figure 7. The detectors in GravityCam consist of a close packed array to fill completely the field of view of the telescope. The sensitive parts of the EMCCDs shown diagrammatically here only cover about 1/6 of the area of the detector package. Unfortunately it would be very difficult to re-engineer such devices to give substantially better coverage. Each detector has an image area plus a near-identical storage area. CMOS detectors have the attraction of offering at least 85% fill factor with current manufacturing technologies. CMOS imaging sensors are ubiquitous for many applications such as web cams and mobile phones, but not yet on large telescopes. However CMOS devices under development for astronomy are making rapid progress so are highly likely to be available for use in GravityCam.

## 7. DETECTOR PACKAGE

The ability to work at high frame rate with good readout noise is key for the detector package. In order to deliver a significant improvement in angular resolution then a minimum detector frame rate is probably around 10 Hz, and a frame rate closer to 30 Hz is preferable. This permits individual images to be checked for image quality and, if subsets are to be combined separately, the quality selection process carried out. Ideally, higher frame rates enable the system to work under a wider range of observing conditions. However the detector frame rate has considerable effect on the processing requirements of the computer system. There is a further complication when observing fields at high galactic latitude as there are likely to be fields relatively empty of reference stars by which to judge the quality of each frame. The higher frame rates will reduce the signal-to-noise on the reference stars and, at those latitudes, that may make it harder to achieve the necessary performance without reducing the frame rate. However in most fields a simple cross correlation between the reference frame (rather than a singular specific reference object) and the new frame will allow the tip tilt errors to be eliminated. The quality of that cross correlation can also be used to measure the quality of the new frame.

The fields targeted for gravitational microlensing are full of stars that make the registration easy to achieve. Nevertheless detector selection requires a careful trade-off. One possible choice for the detector is an electron multiplying CCD (EMCCD: Fig. 8). These have the advantage of being able to work with internal gain that can produce images with essentially zero readout noise. The gain necessary to achieve that is typically several hundred and that will reduce the maximum full well capacity that may be used for the detector. This reduces the detector saturation level, although at high frame rates detector saturation is much less serious. The way that the gain mechanism works inside an EMCCD adds noise to the signal which effectively reduces the detective quantum efficiency of the detector by a factor of 2. The essentially zero readout noise of an EMCCD does allow it to work when the background sky brightness is a very low particularly at higher frame rates and when working



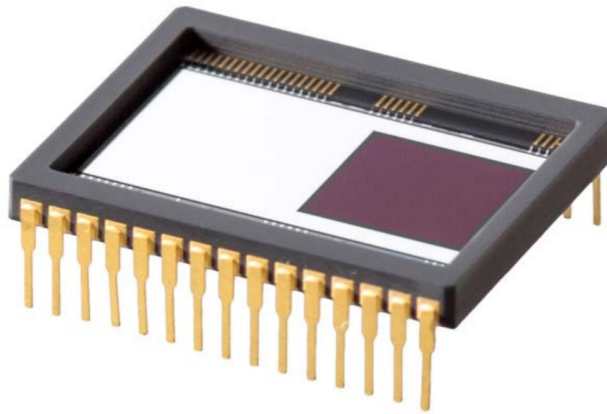


Figure 8. The CCD351 (Teledyne e2v, UK) has  $1024 \times 1024$  pixels and can deliver frame rates of up to 30 Hz. It is thus the largest EMCCD capable of working at such high frame rate. The internal gain register allows operation with essentially zero readout noise at the expense of much reduced full well capacity. However at fast frame rates this is much less critical.

at shorter wavelengths than I-band. One significant side effect of selecting EMCCDs is the relatively small part of the package area that is sensitive to light. This is because of the basic geometry of the device with its image and store structure together with the package that means only 1/6 of its area is light-sensitive.

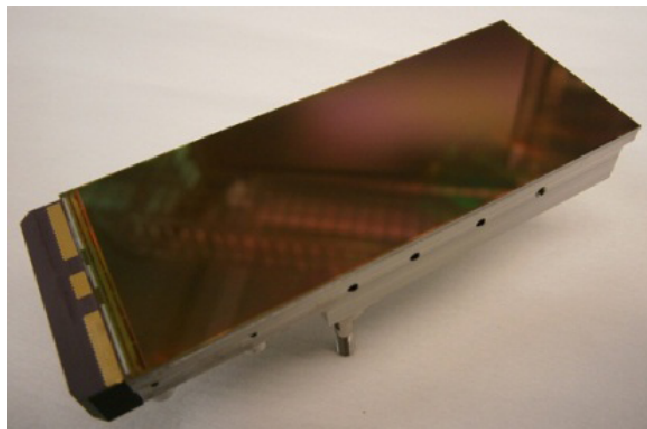


Figure 9. Example of large area CMOS device, the CIS113 from Teledyne e2v (Chelmsford, UK).<sup>24</sup> This has  $1920 \times 4608$  pixels, each  $16 \times 16 \mu\text{m}$ . It is back illuminated and 3-edge buttable. This device has analogue outputs but other designs are available (Fig. 10) with integrated signal processing electronics delivering very low read-out noise. This device is approx.  $30 \times 80 \text{ mm}$ .

Conventional CCD architectures will give a much too high readout noise levels when operated at the frame rates we need. There are now high quantum efficiency CMOS detectors with very low read-out noise,  $<1$  electron rms. In principle they have a number of advantages. The frame transfer architecture of an EMCCD is such that when the integrated image is transferred rapidly into the storage region a bright object in the field produces a faint trail of the image that will complicate the photometry. The architecture of CMOS devices means that they do not suffer from this (Fig. 9). They use active pixel sensors which stores the charge and then, on command, transfers that signal into electronic components buried underneath the sensitive silicon. While that charge is being read out the active pixel will integrate light for the following frame. Astronomical CCDs have low read-out noise because they are read out very slowly. CMOS detectors may be made with integrated signal processing electronics within the device itself. This dramatically simplifies the driver electronics and greatly reduces power

dissipation in the vacuum enclosure. CMOS technology is what is used in standard computer processor chips and therefore integrating even rather complicated electronics in a small area is relatively straightforward. Using one analogue processing chain with a single analogue to digital converter for each column of the detector, for example, means that each pixel is read out relatively slowly and excellent readout noise may be obtained (Fig. 10). Readout noise levels close to one electron rms read noise have been obtained routinely in a number of devices, and by doing on-chip multi-sampling the read noise can be decreased to well below  $1 e^- \text{ rms}$ <sup>25</sup>

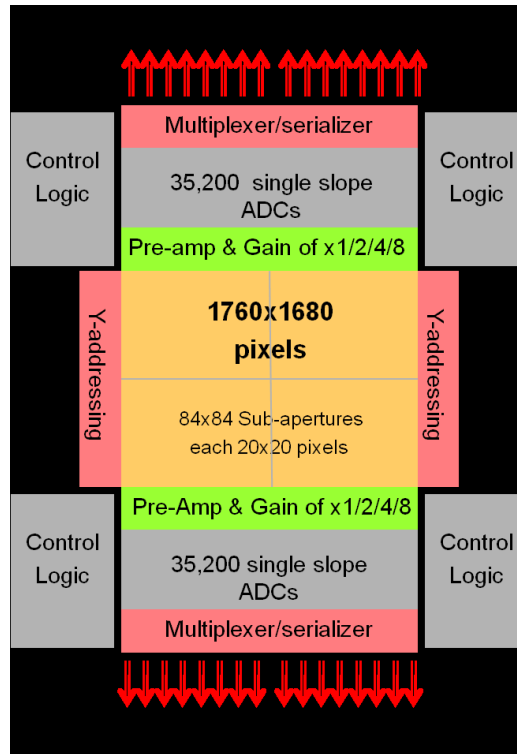


Figure 10. Example of the internal organisation of a highly integrated CMOS sensor for astronomy. The internal architecture is sub- divided into separate areas that may be read out in parallel. This particular device is divided into sub apertures  $20 \times 20$  pixels. These may be read out randomly or sequentially. The signals from the sub apertures are pre-amplified and then passed in this device to 70,400 single slope analogue to digital converters. The digitised data are multiplexed to a total of 88 low-voltage differential serial links to be passed back to the computer.<sup>26</sup>

The data from each of the columns of such a device are multiplexed in order to be transmitted back to the processing computer system. Although this all sounds very complicated these processes may be substantially integrated and carried out within the CMOS device leading to a very simple package as far as the engineer employing such devices is concerned. Such a device is driven digitally rather than with the more demanding analogue ones making the implementation of the GravityCam detector package with CMOS devices significantly more straightforward. Finally, it is also important that CMOS devices are now being manufactured so that they may be butted on 2 or 3 out of the 4 sides. This means that the field of view of the telescope is covered much more efficiently with in excess of 85% covering factor. This leads to considerable improvement in efficiency compared to the 16% possible with an EMCCD. The intrinsic structure of the EMCCD makes it very hard to achieve fast buttable detectors without a very expensive custom development programme. The consequence is that an EMCCD based GravityCam covering a full field requires 6 separate pointings. With a CMOS detector then the single pointing will cover 85% of the field which for statistical surveys is all that is necessary. It will also cut down the time used for repeated field acquisitions.

A project to thoroughly test the CIS120 (Teledyne e2v, Chelmsford, UK) is currently being undertaken at the Open University. These tests will include noise, photoresponse, gain uniformity, and inter-pixel responsivity

measurements. The goal is to install a CIS120 test camera on the Danish 1.54m telescope at the La Silla observatory in Chile. This telescope has a two-colour EMCCD instrument installed<sup>27</sup> that has been in operation since 2013. It will therefore be possible to do direct on-sky comparison of the CIS and EMCCD technologies, which will help inform which type of detector will be optimal for GravityCam. The CIS120 is a 2k×2k device with a 10μm pixel pitch, capable of a 20 Hz frame-rate. The device has on-chip ADCs and outputs the digital signal through 4 LVDS channels and will come in a 3-sides buttable package. The current noise specification of the CIS120 is 4 e<sup>-</sup>, which is a bit too high for high frame-rate imaging, but future revisions of the device is expected to have significantly lower noise.

The device is made on back illuminated (thinned) silicon, which means that the quantum efficiency is very close to that of a back illuminated CCD. Recently it has been shown that it is possible to make fully depleted CIS devices by applying reverse substrate bias.<sup>28,29</sup> Using this technology means that much higher quantum efficiency in the near-infrared wavelength area will be obtained, and this will further add to the sensitivity and efficiency of the detector package.

## 8. COMPUTER INTERFACE AND SOFTWARE STRUCTURE

Years of experience working with fast EMCCD detectors suggests that it will be relatively straightforward to manage at least 10 - 20 Mpixels at 30 Hz frame rate with a single modern data processing computer. Detectors using 13-16 μm pixels and a nearly fully-filled focal plane will produce about 0.5 Gpixels per frame. We have simply assumed that each computer will be a relatively standard well-configured PC type computer. Each computer receives data from the modules over a fibre optic link. Once the relative offset of each image is established it is shifted and added to the summed image. It is usually safer to combine images into different bins depending on the seeing conditions which are highly variable even when the seeing appears to be good. A system very similar to this is used for the two-color EMCCD instrument at the Danish 1.54 m telescope in Chile.<sup>27</sup> In principle, images may be processed individually but the data volume that produces would quickly become unmanageable.

As the point spread function in each and every frame is very well defined when carrying out the gravitational microlensing survey it is probably a good strategy to deconvolve each of the images so that PSF halos are further suppressed. This degree of processing requires more significant provision and our models suggest that this is best done with graphics processor unit (GPU) cards. Indeed, if they are to be used it is likely that much of the routine processing is also best done on those cards as the data will be transferred into them anyway. The data processing requirements suggest that we will need an array of 20-50 good-performance PC computers. FPGA (field-programmable gate array) processing could also be considered. These could be used either in an inline architecture, where preprocessing of the images happens before they reach the computer, or as co-processing with the CPU as an alternative to GPUs.

In surveys that make repeated visits to the same fields the system will accumulate knowledge of the photometric characteristics of all the objects in each field of view. The GravityCam system will access the archive of detailed existing knowledge of that field to compare with the measurements in real time. Each new image can be compared immediately with the knowledge base that exists already for that field. In the case of the gravitational microlensing survey, the principal data needed for each star is an understanding of its intrinsic variability. When looking for gravitational microlensing events, events typically lasting over days or weeks and follow a well-defined light curve but in a few cases deviations from the standard light curve will be noticed. Such an event must be flagged immediately to ensure that the field is revisited frequently enough to provide the photometric monitoring as necessary. This also enables other instruments or telescopes programs to be alerted to the new event as appropriate. Indeed it would also be possible to change the observing program of GravityCam to provide follow-up photometry.

The operation of GravityCam will be overseen by a supervisory computer system that is responsible for setting up each of the detector modules and checking that all of the technical variables are in place. The supervisory computer will also monitor instrument enclosure temperatures once the devices are running. At that point data taking may be started. For each new field accessed, where appropriate, archival data on that field is loaded into each data processing computer. The supervisory system triggers each data processing computer to get on with the observations of each field. Each image is calibrated photometrically simply by measuring the light from

as many reference stars as available to give a photometric calibration of each individual frame. Stars are then tracked and their brightness compared with the existing knowledge of their characteristics. Individual images are then offset laterally to bring them into positional registration. The new images may then be combined with images already summed, and processed to improve the detailed knowledge of the characteristics of each and every star in the field, in turn allowing the archive data to be improved and updated. The exact frequency with which this is done depends very much on a detailed trade-off involving the processing power required and the information needed and of the particular observing program.

## 9. SENSITIVITY ESTIMATES AND PREDICTIONS

There is often concern about the photometric accuracy of Lucky Imaging or indeed any approach that selects a subset of images. However each frame is used in its entirety or not depending on the percentage selection criteria. Each frame is as photometrically reliable as any other and the overall sensitivity is simply the same as one would achieve with the long exposure time but reduced by the selection efficiency. As a consequence, with 100% image selection followed by shifting and adding then there is no loss in efficiency. Neither of these detectors (EMCCD or CMOS) has essentially any equivalent of "shutter closed time". In practice it may be that individual images are accumulated into more specific image quality bins such as 5% or 10% windows. These can always be combined later to give the full sensitivity. However if only 50% of the images are to be used then the sensitivity achieved in the final image will be reduced obviously by a factor of 2.

It has already been mentioned that gravitational lensing, both microlensing and weak shear lensing, is an achromatic process. This means that in order to achieve the very highest sensitivity then filters may be dispensed with or perhaps restricted to a long pass filter. It is very unfashionable for astronomers to observe without filters but it has a significant influence on the overall sensitivity. With typical CCD or CMOS sensitivity, dispensing with a filter will improve the signal-to-noise on a faint object by about one magnitude when compared with the I band sensitivity. It is interesting to note that deep Galaxy imaging in 1986 [28] without any filter detected high galaxy surface densities at high galactic latitudes. Higher densities were only measured nearly 20 years later by the Hubble Space Telescope Deep Field and by using very long exposures indeed. It is also interesting to note that the Euclid space mission [30] scheduled for launch in 2021 includes an imaging instrument (VIS) with only a very broad band (500-900 nm) filter for just this purpose. As a small diameter telescope it is important that it has as high a throughput as possible.

## 10. PROJECT COSTINGS ON TIMESCALES

The cost and effort in building GravityCam will be dominated by detector related work. If an EMCCD approach is used then existing detectors can be purchased relatively quickly. The same will most likely be true if a CMOS approach is to be taken, as there over the last few years has been a rapid development of high performance CMOS detectors that can be used for astronomy. With CMOS detectors the electronic integration will be much easier and that in turn will make the design of cooling system easier. With EMCCD detectors a significant drive power is required to clock the charge across the device. Power dissipation within the detector sub-assembly must be managed with care if it is not to become excessive, and thereby increase the cooling power requirement within the dewar.

The turnkey software package will be a critical piece of design work as it must provide timely and consistent image processing. It is essential that it can reliably alert other telescopes and instruments to start to follow new events. The supervisory software must be structured in a relatively configurable and modifiable way so that it is easy to implement different kinds of strategies for observing programs. It is always important to bear in mind that developing software that responds quickly without causing too many false positives with a widefield imaging survey is breaking new ground and creating the software is likely to be at least challenging.

The EMCCDs that we would use are already in production so we know that the cost of covering a  $0.5^\circ$  diameter focal plane will be in the region of €1 million. The costs of a CMOS detector array are less easy to quantify as the market is more diverse and it might be worth waiting for some of the upcoming technology enhancements, such as the deep-depletion technique, to be implemented. Also, if we use CMOS detectors, we will be essentially purchasing up to 6 times as many pixels and the cost of silicon detectors that are thinned will be correspondingly

higher. At this stage the cost of these detectors will clearly drive the total cost and so accurate estimates cannot really be made. We estimate that the project cost using EMCCDs would probably be in the region of €10 million and with CMOS detectors closer to €15 million. Most of the work required is relatively straightforward and could be done within 2.5-3 years provided the detectors are available on the correct timescale. This makes the GravityCam project relatively inexpensive and relatively quick to implement on the telescope. It has the potential to revolutionise several independent branches of astronomy and provides a unique capability not available on any other telescope, ground or space based or indeed planned in the foreseeable future.

## 11. CONCLUSIONS

Developments in imaging detector technology mean that techniques of improving the resolution of images taken on ground-based telescopes are now within reach. All the principles have been demonstrated already and there are many astronomical programs which are now being substantially constrained because of the quality of images that can be delivered even on the best ground-based sites. GravityCam provides a new approach to how this may be done and we have outlined several exciting scientific programmes which would benefit greatly if GravityCam was available.

## ACKNOWLEDGEMENTS

We have benefited from discussions with a number of colleagues and in particular would like to thank Konstantin Stefanov, Michael Hirsch, Markus Hundertmark, Rafael Robolo, Keith Horne, Sarah Bridle, Bruno Sicardy, Daniel Bramich and Khalid Alsubai.

## REFERENCES

- [1] Reid, N. and Djorgovski, S., “The Second Palomar Sky Survey,” in [*Sky Surveys. Protostars to Protogalaxies*], Soifer, B. T., ed., *Astronomical Society of the Pacific Conference Series* **43**, 125 (Jan. 1993).
- [2] Gunn, J. E., Siegmund, W. A., Mannery, E. J., Owen, R. E., Hull, C. L., Leger, R. F., Carey, L. N., Knapp, G. R., York, D. G., Boroski, W. N., Kent, S. M., Lupton, R. H., Rockosi, C. M., Evans, M. L., Waddell, P., Anderson, J. E., Annis, J., Barentine, J. C., Bartoszek, L. M., Bastian, S., Bracker, S. B., Brewington, H. J., Briegel, C. I., Brinkmann, J., Brown, Y. J., Carr, M. A., Czarapata, P. C., Drennan, C. C., Dombeck, T., Federwitz, G. R., Gillespie, B. A., Gonzales, C., Hansen, S. U., Harvanek, M., Hayes, J., Jordan, W., Kinney, E., Klaene, M., Kleinman, S. J., Kron, R. G., Kresinski, J., Lee, G., Limmongkol, S., Lindenmeyer, C. W., Long, D. C., Loomis, C. L., McGehee, P. M., Mantsch, P. M., Neilsen, Jr., E. H., Neswold, R. M., Newman, P. R., Nitta, A., Peoples, Jr., J., Pier, J. R., Prieto, P. S., Prosapio, A., Rivetta, C., Schneider, D. P., Snedden, S., and Wang, S.-i., “The 2.5 m Telescope of the Sloan Digital Sky Survey,” *AJ* **131**, 2332–2359 (Apr. 2006).
- [3] The Dark Energy Survey, “<https://www.darkenergysurvey.org/>.”
- [4] Ivezić, Z., Tyson, J., Acosta, E., Allsman, R., Anderson, S., Andrew, J., Angel, R., Axelrod, T., Barr, J., Becker, A., et al., “LSST: from Science Drivers to Reference Design and Anticipated Data Products,” *ArXiv e-prints* (May 2008).
- [5] Baldwin, J. E., Tubbs, R. N., Cox, G. C., Mackay, C. D., Wilson, R. W., and Andersen, M. I., “Diffraction-limited 800 nm imaging with the 2.56 m Nordic Optical Telescope,” *A&A* **368**, L1–L4 (Mar. 2001).
- [6] Law, N. M., Mackay, C. D., Dekany, R. G., Ireland, M., Lloyd, J. P., Moore, A. M., Robertson, J. G., Tuthill, P., and Woodruff, H. C., “Getting Lucky with Adaptive Optics: Fast Adaptive Optics Image Selection in the Visible with a Large Telescope,” *ApJ* **692**, 924–930 (Feb. 2009).
- [7] Mackay, C. D., Tubbs, R. N., Bell, R., Burt, D. J., Jerram, P., and Moody, I., “Subelectron read noise at MHz pixel rates,” in [*Sensors and Camera Systems for Scientific, Industrial, and Digital Photography Applications II*], Blouke, M. M., Canosa, J., and Sampat, N., eds., *Proc. SPIE* **4306**, 289–298 (May 2001).
- [8] Einstein, A., “Erklärung der perihelbewegung des merkur aus der allgemeinen relativitätstheorie,” *Sitzungsber. Kgl. Preuss. Akad. Wiss.* , 831–839 (1915).
- [9] Paczynski, B., “Gravitational microlensing by the galactic halo,” *ApJ* **304**, 1–5 (May 1986).

- [10] Bennett, D. P. and Rhie, S. H., “Simulation of a Space-based Microlensing Survey for Terrestrial Extrasolar Planets,” *ApJ* **574**, 985–1003 (Aug. 2002).
- [11] Beaulieu, J. P., Bennett, D. P., Fouqué, P., Williams, A., Dominik, M., Jørgensen, U. G., Kubas, D., Cassan, A., Coutures, C., Greenhill, J., Hill, K., Menzies, J., Sackett, P. D., Albrow, M., Brilliant, S., Caldwell, J. A. R., Calitz, J. J., Cook, K. H., Corrales, E., Desort, M., Dieters, S., Dominis, D., Donatowicz, J., Hoffman, M., Kane, S., Marquette, J. B., Martin, R., Meintjes, P., Pollard, K., Sahu, K., Vinter, C., Wambsganss, J., Woller, K., Horne, K., Steele, I., Bramich, D. M., Burgdorf, M., Snodgrass, C., Bode, M., Udalski, A., Szymański, M. K., Kubiak, M., Wieckowski, T., Pietrzyński, G., Soszyński, I., Szewczyk, O., Wyrzykowski, L., Paczyński, B., Abe, F., Bond, I. A., Britton, T. R., Gilmore, A. C., Hearnshaw, J. B., Itow, Y., Kamiya, K., Kilmartin, P. M., Korpela, A. V., Masuda, K., Matsubara, Y., Motomura, M., Muraki, Y., Nakamura, S., Okada, C., Ohnishi, K., Rattenbury, N. J., Sako, T., Sato, S., Sasaki, M., Sekiguchi, T., Sullivan, D. J., Tristram, P. J., Yock, P. C. M., and Yoshioka, T., “Discovery of a cool planet of 5.5 Earth masses through gravitational microlensing,” *Nature* **439**, 437–440 (Jan. 2006).
- [12] Dominik, M., Rattenbury, N. J., Allan, A., Mao, S., Bramich, D. M., Burgdorf, M. J., Kerins, E., Tsapras, Y., and Wyrzykowski, L., “An anomaly detector with immediate feedback to hunt for planets of Earth mass and below by microlensing,” *MNRAS* **380**, 792–804 (Sept. 2007).
- [13] Mao, S. and Paczynski, B., “Gravitational Microlensing by Double Stars and Planetary Systems,” *ApJ* **374**, L37 (June 1991).
- [14] Gould, A. and Loeb, A., “Discovering Planetary Systems through Gravitational Microlenses,” *ApJ* **396**, 104 (Sept. 1992).
- [15] Bennett, D. P. and Rhie, S. H., “Detecting Earth-Mass Planets with Gravitational Microlensing,” *ApJ* **472**, 660 (Nov. 1996).
- [16] Dominik, M., “Studying planet populations with Einstein’s blip,” *Philosophical Transactions of the Royal Society of London Series A* **368**, 3535–3550 (July 2010).
- [17] OGLE-IV, “<http://ogle.astrouw.edu.pl>.”
- [18] Treu, T., “Strong Lensing by Galaxies,” *Annual Review of Astronomy and Astrophysics* **48**, 87–125 (Sept. 2010).
- [19] Hoekstra, H. and Jain, B., “Weak Gravitational Lensing and Its Cosmological Applications,” *Annual Review of Nuclear and Particle Science* **58**, 99–123 (Nov. 2008).
- [20] Downing, M., Baade, D., Sinclair, P., Deiries, S., and Christen, F., “CCD riddle: a) signal vs time: linear; b) signal vs variance: non-linear,” in [*Society of Photo-Optical Instrumentation Engineers (SPIE) Conference Series*], *Proc. SPIE* **6276**, 627609 (June 2006).
- [21] Goldberg, D. M. and Bacon, D. J., “Galaxy-Galaxy Flexion: Weak Lensing to Second Order,” *ApJ* **619**, 741–748 (Feb. 2005).
- [22] Okura, Y., Umetsu, K., and Futamase, T., “A New Measure for Weak-Lensing Flexion,” *ApJ* **660**, 995–1002 (May 2007).
- [23] Leonard, A., Goldberg, D. M., Haaga, J. L., and Massey, R., “Gravitational Shear, Flexion, and Strong Lensing in Abell 1689,” *ApJ* **666**, 51–63 (Sept. 2007).
- [24] Jordan, P. R., Jordan, D., Jerram, P. A., Pralong, J., and Swindells, I., “e2v new CCD and CMOS technology developments for astronomical sensors,” in [*High Energy, Optical, and Infrared Detectors for Astronomy VI*], *Proc. SPIE* **9154**, 91540M (July 2014).
- [25] Segovia, J. A., Medeiro, F., Gonzalez, A. H., Villegas, A. B., and Rodríguez-Vázquez, A., “A 5-megapixel 100-frames-per-second 0.5  $\mu\text{m}$  low noise CMOS image sensor with column-parallel two-stage oversampled analog-to-digital converter,” (2017).
- [26] Downing, M., Kolb, J., Balard, P., Dierickx, B., Defernez, A., Feautrier, P., Finger, G., Fryer, M., Gach, J.-L., Guillaume, C., Hubin, N., Jerram, P., Jordan, P., Meyer, M., Payne, A., Pike, A., Reyes, J., Simpson, R., Stadler, E., Stent, J., and Swift, N., “LGSD/NGSD: high speed optical CMOS imagers for E-ELT adaptive optics,” in [*High Energy, Optical, and Infrared Detectors for Astronomy VI*], *Proc. SPIE* **9154**, 91540Q (July 2014).

- [27] Skottfelt, J., Bramich, D. M., Hundertmark, M., Jørgensen, U. G., Michaelsen, N., Kjærgaard, P., Southworth, J., Sørensen, A. N., Andersen, M. F., Andersen, M. I., Christensen-Dalsgaard, J., Frandsen, S., Grundahl, F., Harpsøe, K. B. W., Kjeldsen, H., and Pallé, P. L., “The two-colour EMCCD instrument for the Danish 1.54 m telescope and SONG,” *A&A* **574**, A54 (Feb. 2015).
- [28] Stefanov, K. D., Clarke, A. S., and Holland, A. D., “Fully depleted pinned photodiode CMOS image sensor with reverse substrate bias,” *IEEE Electron Device Letters* **38**, 64–66 (Jan 2017).
- [29] Stefanov, K. D., Clarke, A. S., Ivory, J., and Holland, A. D., “Design and performance of a pinned photodiode CMOS image sensor using reverse substrate bias,” *Sensors* **18**(1) (2018).