



This is a repository copy of *Ecological network analysis on intra-city metabolism of functional urban areas in England and Wales*.

White Rose Research Online URL for this paper:
<http://eprints.whiterose.ac.uk/133956/>

Version: Accepted Version

Article:

Tan, L.M., Arbabi, H. orcid.org/0000-0001-8518-9022, Li, Q. et al. (4 more authors) (2018) Ecological network analysis on intra-city metabolism of functional urban areas in England and Wales. *Resources, Conservation and Recycling*, 138. pp. 172-182. ISSN 0921-3449

<https://doi.org/10.1016/j.resconrec.2018.06.010>

Article available under the terms of the CC-BY-NC-ND licence
(<https://creativecommons.org/licenses/by-nc-nd/4.0/>).

Reuse

This article is distributed under the terms of the Creative Commons Attribution-NonCommercial-NoDerivs (CC BY-NC-ND) licence. This licence only allows you to download this work and share it with others as long as you credit the authors, but you can't change the article in any way or use it commercially. More information and the full terms of the licence here: <https://creativecommons.org/licenses/>

Takedown

If you consider content in White Rose Research Online to be in breach of UK law, please notify us by emailing eprints@whiterose.ac.uk including the URL of the record and the reason for the withdrawal request.



eprints@whiterose.ac.uk
<https://eprints.whiterose.ac.uk/>

1 Full length article

2 **Ecological Network Analysis on Intra-City Metabolism of** 3 **Functional Urban Areas in England and Wales**

4 Ling Min Tan^{a,*}; Hadi Arbabi^a; Qianqian Li^a; Yulan Sheng^b; Danielle Densley Tingley^a; Martin Mayfield^a; Daniel Coca^c.

5 ^a Department of Civil and Structural Engineering, The University of Sheffield, Sheffield S1 3JD, UK.

6 ^b Department of Urban Studies and Planning, The University of Sheffield, Sheffield S1 3JD, UK.

7 ^c Department of Automatic Control and Systems Engineering, The University of Sheffield, Sheffield S1 3JD, UK.

8
9 * Corresponding author at: Department of Civil and Structural Engineering, Sir Frederick Mappin Building,
10 Mappin Street, Sheffield S1 3JD, UK.

11 Email Address: lingmin.tan@sheffield.ac.uk

12
13 **Abstract:** The UK has one of the world's most urbanised societies where nearly 83% of the total population lives
14 in cities. The continuing population growth could lead to increases in environmental pollutions and congestion
15 within cities. The framework of urban metabolism uses an analogy between cities and ecosystems to study the
16 metabolic processes within complex urban systems akin to natural biological systems. It remains as a challenge
17 to fully understand the complicated distribution of resource flows within an urban network. In this paper,
18 Ecological Network Analysis was applied to study the intra-city flows between economic sectors in 35 functional
19 urban areas in order to investigate their respective metabolic relationships. The intra-city flows network of each
20 area was also supplemented with the geographical distance between the workplace zones to study the impacts of
21 spatial distribution on the density of resource flows. The metabolic systems were dominated by 64% of
22 exploitative relationships with an average mutualism index of 0.93 and synergism index of 3.56 across all 35
23 areas. The consumption-control and production-dependency relationships revealed the hierarchical orders among
24 the sectors resembling the pyramidal structure of an urban ecosystem. Network community classification
25 emphasized the importance of inter-relationship within the organisation of each community class. The producer-
26 type and consumer-type communities showed the tendencies of those sectors to cluster based on their respective
27 hierarchical roles in the ecosystem. This work provides an insight into the wide range of intra-city ecological
28 metabolic characteristics which can potentially expand to a multi-scale assessment of urban metabolism across
29 the country.

30 **Keywords:** Urban Metabolism; Input-Output Analysis; Ecological Network Analysis; Network community
31 structure; Workplace spatial distribution.

33 **1. Introduction**

34 Urban population which made up to 55% of total population worldwide in 2016 is undergoing fastest growth
35 in history, from 34% in 1960 and is projected to increase to 66% by 2050 (DESA, 2016). The UK has one of the
36 world's most urbanised societies where nearly 83% of the total population lives in cities (World Bank, 2017). The
37 continuing trend of rapid urbanisation presents a challenge for national and local governments to maintain the
38 economic growth and standards of living in cities while ensuring the rates of resource consumption return to being
39 within planetary limits.

40 The concept of urban metabolism by Wolman (Wolman, 1965) proposes an analogy between cities and
41 ecosystems to study the metabolic processes within complex urban systems akin to a natural biological system
42 using a hypothetical model. Since Wolman's pioneering study, research efforts have been invested to explore and
43 expand the conceptual model by applying real data from various cities (Huang and Chen, 2009; Huang and Hsu,
44 2003; Newcombe et al., 1978; Warren-Rhodes et al., 2001; Zuchetto, 1975). Despite the wide range of analytical
45 frameworks developed to account for various types of material flows entering and leaving the cities (Cencic and
46 Rechberger, 2008; Hunt et al., 2014; Page et al., 2008), it remains a challenge to fully understand the complicated
47 distribution of resource flows within the urban network. Material flow analysis applies mass balance to quantify
48 in- and out-flows of resources and evaluate the remaining stocks in cities. This accounting technique is useful in
49 tracking circulations of material and to optimise disposal of waste generated from urban activities through
50 recycling. However, it does not address the spatial distribution and resource flows within the internal organisation

51 of a complex urban ecosystem (Ravalde and Keirstead, 2015). For energy flow analysis, energy approach is
52 proposed based on the concept of embodied energy in the flows of certain materials, which was developed by
53 Odum (Odum, 1976, 1996) in his theory on the functioning of ecological system. In theory, the emergy approach
54 addresses and rectifies the problem of incomparable flows between different subsystems and improves
55 consistency for the losses and efficiencies of different transformations taking place within the system. The concern
56 for such approach lies on the use of an appropriate measurement in converting the units of energy and must be
57 determined for all flows to ensure a unified standard.

58 From the perspective of ecological networks (Bai, 2016; Huang, 1998; Newman, 1999), urban ecosystem is
59 governed by the complex interactions among its components which lead to a unique mechanism in the shaping of
60 ecological structure and social communities of a city. The Ecological Network Analysis (ENA) approach dissects
61 the problems of urban ecosystem at each hierarchical level of the system based on its respective functioning roles
62 and the rates of resource consumption. The concept of ENA was formed by connecting the smaller individual
63 entities in the system as an ecological network to understand the existing direct and indirect linkages among the
64 components, sharing a similar concept with a natural ecosystem. The work of ENA integrated with Input-Output
65 techniques from Leontief's model to study the structural distribution of different components in an ecosystem
66 (Hannon 1973; Leontief, 1986), hence its impact on the interrelations between different trophic levels based on
67 the hierarchical structure of an ecological pyramid. ENA was further improved and refined by incorporating with
68 flow analysis (to address the total system throughflow, average path-length and cycling index) and hence, the
69 concept of "environ" was generated to study the behaviours of an ecological network with the pre-determined
70 input and output flows at each component (Fath and Killian, 2007; Finn, 1976; Patten, 1982). From ENA, the
71 energy and material flows through an ecosystem were simulated to investigate the structural distributions and
72 functionality of the system (Jørgensen, 2000; Szyrmer and Ulanowicz, 1987). ENA provides an analytical tool for
73 various applications to study metabolism in cities from different perspectives i.e. ecological hierarchy relationship,
74 spatial variation, energy flows in previous scholarly researches (Chen and Chen, 2014; Fan et al., 2017; Fath and
75 Borrett, 2006; Fath et al. 2010; Zhang et al., 2010, 2016). The technique of ENA is not limited to intra-system
76 flows scaled on a single level such as city, region or country but also applied to study interregional energy flows
77 between connected cities at combined levels, as demonstrated in the case study of Beijing-Tianjin-Hebei in China
78 (Zheng et al., in press).

79 To understand the requirements on resource management and examine the metabolic characteristics of an
80 urban system, application of ENA on 35 functional urban areas in England and Wales was implemented in this
81 study. ENA linked the socio-economic sectors in the urban area in an inter-connected network and investigated
82 the pairwise metabolic relationships through the intra-city monetary transactions, reflecting the dependencies of
83 the urban ecological network in terms of its resources flows and consumptions. The study was further extended
84 with the estimated geographical distance between the sectors from the respective workplace zones classifications
85 to address the spatial impact of urban network. For city planning and policymaking, this work demonstrates a
86 better understanding of different resource demands and circulations within the local flow network, enabling the
87 regulation of the needs and wastes of each sector in the city. Strategic resource management should improve the
88 efficiency of the urban metabolism and lead to long-term benefits for the society.

89 The goals of this paper are twofold, firstly, it presents a novel attempt to conduct an in-depth inspection of
90 intra-city metabolism across all urban areas in England and Wales at an aggregated level, highlighting the
91 ecological interactions between the components of the urban ecosystem as a whole. Secondly, this paper addresses
92 the spatial characteristics of urban network community structure and discusses the impact on community
93 classification based on flow densities.

94 The rest of the paper is organised as follows. The next section in this paper explains the methodology adopted
95 in the process of data sourcing and preparation, followed by the ecological methodologies and the functional
96 analysis implemented in this work. Furthermore, the result of metabolic relationships and network community
97 structures are also included. The final section concludes the study with the potential implications and future
98 investigations on intra-city metabolism.

99 2. Methodology

100 2.1 Data Preparation

101 The UK National Input-Output Supply and Use Table 2011 published by Official National Statistics (ONS,
 102 2017a) was used in this study. In order to examine the flow at a local scale, the data for Gross Value Added (GVA)
 103 2011 (ONS, 2017b) of different sectors for each functional urban area were used to scale down the national flow
 104 data accordingly, assuming the same ratio for local production and consumption of goods and services compared
 105 to the national figures. This could result in erroneous estimations of import and export since international cross-
 106 boundary flow does not scale with the local GVA. The resultant format of the input-output data for all industrial
 107 sectors must comply with Leontief's model (Leontief, 1986). The input-output monetary flows within the city
 108 were tabulated in the form of a balanced square matrix. This was then used as the adjacency matrix was to
 109 construct the resource flow network. In this paper, 35 case studies were identified based on the boundary of
 110 functional urban areas in England and Wales. Table 1 shows the abbreviation and name for all 35 functional urban
 111 areas, in a decreasing order of their total population. The urban audit boundary was set to define the scope of the
 112 study for 35 functional urban areas in England and Wales, which includes the core central city of each area and
 113 its commuting zones (Eurostat, 2017). In this case, the wider functional urban areas might consist of multiple local
 114 authorities (the lowest administrative level of local governing councils) as data collecting units. The resultant data
 115 of urban population and GVA of the urban areas were obtained by combining all the local authorities within the
 116 respective boundaries.
 117

Rank	Abbrev.	Functional Urban Area	Population ¹	Gross Value Added (GVA) ¹ /£ millions	GVA Fraction (%)
1	LO	London	12,142,021	413,048	48.4
2	WM	West Midlands (Birmingham)	2,864,763	52,211	6.1
3	MA	Greater Manchester	2,776,368	52,800	6.2
4	LP	Liverpool	1,506,492	26,784	3.1
5	NE	Tyneside Conurbation (Newcastle)	1,199,547	25,672	3.0
6	LD	Leeds	1,160,663	26,575	3.1
7	SP	Sheffield	908,572	15,597	1.8
8	BZ	Bristol	894,582	23,235	2.7
9	CD	Cardiff	885,276	15,418	1.8
10	NG	Greater Nottingham	870,408	16,528	1.9
11	LC	Leicester	836,641	15,845	1.9
12	KH	Kingston upon Hull	590,796	10,151	1.2
13	CV	Coventry	542,820	10,004	1.2
14	PO	Portsmouth	520,816	10,905	1.3
15	BU	Bournemouth	511,926	10,399	1.2
16	SJ	Stoke-on-Trent	469,806	7,579	0.9
17	MB	Middlesbrough	465,356	7,906	0.9
18	CH	Cheshire West & Chester	459,774	8,751	1.0
19	NR	Norwich	381,393	8,024	0.9
20	SS	Swansea	378,571	5,971	0.7
21	BE	Brighton and Hove	370,536	7,287	0.9
22	SO	Southampton	361,722	8,248	1.0
23	PR	Preston	356,826	7,137	0.8
24	DB	Derby	343,858	7,405	0.9
25	EX	Exeter	328,271	6,664	0.8

26	BP	Blackpool	325,870	5,359	0.6
27	RG	Reading	310,282	10,773	1.3
28	BB	Blackburn with Darwen	285,498	4,944	0.6
29	CB	Cambridge	272,567	8,321	1.0
30	IP	Ipswich	258,319	5,630	0.7
31	NP	Newport	236,975	4,331	0.5
32	LL	Lincoln	201,603	3,883	0.5
33	GL	Cheltenham	197,914	5,006	0.6
34	TN	Hastings	180,902	2,786	0.3
35	BN	Burnley	176,608	2,651	0.3

¹Combined regional data based on Local Authority in the UK (2011) (ONS, 2017c)

Table 1. Name and abbreviation of 35 functional urban areas in England and Wales.

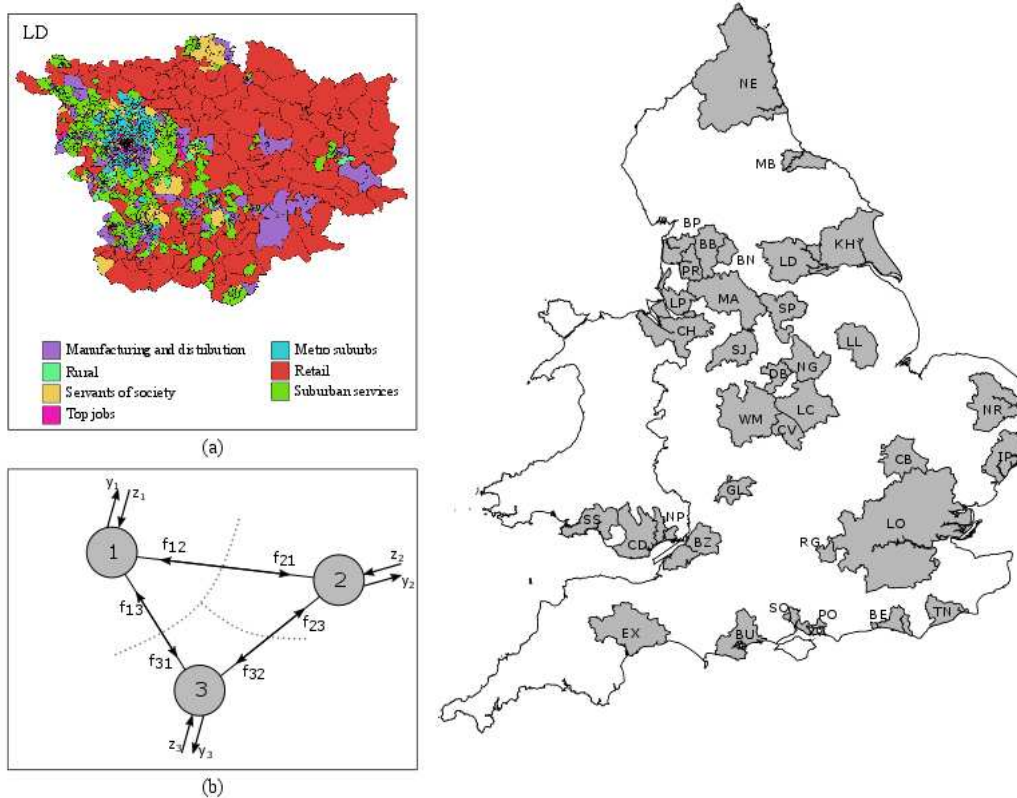
The sectors in the National Input-Output Supply and Use Table at intermediate product level were categorised according to UK Standard Industrial Classification of Economic Activities (SIC2007) (ONS, 2017d) to allocate the 105 sectors to 11 categories of the GVA data provided by the local authorities based on the types of economic activity, as shown in Table 2. This was to reduce the resolution of economic activities in order to obtain the input-output flow data at urban level through GVA scaling. See supplementary Table 1 and 2 for the national input-output data of 105 and 11 sectors respectively. See supplementary Table 3 for local intra-city input-output table for 35 urban areas, scaled to local GVA.

Sector Number	Sector Code	Contents
1	A	Agriculture, Forestry and Fishing
2	BDE	Production other than manufacturing: Mining and quarrying Electricity, gas, steam and air conditioning supply Water supply, sewerage, waste management, remediation activities
3	C	Manufacturing
4	F	Construction
5	GHI	Distribution: Wholesale and retail trade; repair of motor vehicles and motorcycles. Transport and storage Accommodation and food service activities
6	J	Information and Communication
7	K	Finance and Insurance Activities
8	L	Real Estate Activities
9	MN	Business Service Activities: Professional, scientific and technical activities Administrative and support service activities
10	OPQ	Public Administration and defence; compulsory social security Education Human health and social work activities
11	RST	Arts entertainment and recreation Other service activities Household activities for own use.

Table 2. Industrial classification.

Workplace zones classification data based on the workforce populations (Cockings et al., 2015) were applied to investigate the spatial distribution of the local community structure and its impact on resource consumption. Sector allocations were carried out based on the employment data documented by ONS (2012) in each workplace zone and two sectors with the two highest workforce populations were selected. There were two exceptional cases

135 of special condition in this part: first, if the employment number for multiple sectors are similar, the zone is
 136 allocated under multiple sectors simultaneously; second, if one sector only exists in a particular workplace zone,
 137 it is selected regardless of its population in that area. Geographic Information System (GIS) was used to measure
 138 the spatial distance between the sectors within the urban areas and to study the relationship between the spatial
 139 connection among the sectors and their monetary flows. The “spatial join” function combined the workplace zones
 140 with each urban audit function area of the 35 cases (ONS, 2017c) inspected in this study. The centroid, or
 141 geometrical centre of each polygon in the workplace zone area was identified using GIS to represent the location
 142 of the respective sector, as shown in Fig. 1. A distance matrix (11×11) was generated to tabulate the average
 143 pairwise distance between all 11 sectors for each area.



144
 145 **Fig. 1.** Map showing the geographical location of 35 functional urban areas including (a) the workplace zones in
 146 Leeds with its respective classification based on industrial type and (b) the conceptual schematic diagram of
 147 Leeds to demonstrate the network model with multiple sector nodes and connecting flows between them.

148 2.2 Ecological Network Analysis

149 The conceptual ecological network model in Fig. 1b shows that each node represents a sector, located at the
 150 centroid of each workplace zone on the map of an urban area and the arrow connection between the nodes
 151 represents the resources flow. In this study, the network had bi-directional flows with different weights,
 152 corresponded to the monetary value of the flows. For steady-state operation, the input-output flow system was
 153 assumed to be in equilibrium, where the sum of inflows equals to the sum of outflows, $T_i^{(in)} = T_i^{(out)}$. Given that
 154 f_{ij} represents flows from compartment j to compartment i and vice versa, the formulae for total inflow and
 155 outflow at compartment i are

$$T_i^{(in)} = T_i = \sum_{j=1}^n f_{ij} + z_i \quad (1)$$

$$T_i^{(out)} = T_j = \sum_{j=1}^n f_{ji} + y_i \quad (2)$$

156 where z_i represents cross-boundary inflow and y_i represents cross-boundary outflow.

157 However, the initial regional input-output table was not in equilibrium. Inter-city flows were not accounted
 158 when scaling down the input-output flows according to local *GVA* data. Only the national import and export were
 159 taken as cross-boundary flow into and out of the city. To balance the local intra-city input-output table, any
 160 computed difference between the initial $T_i^{(in)}$ and $T_i^{(out)}$ was treated as addition to the total cross-boundary flows
 161 around each urban area, regardless of inter-city or international flows.

162 With the balanced flow matrix, the Ecological Network Analysis (ENA) method (Chen and Chen, 2014; Fan
 163 et al., 2017; Fath and Borrett, 2006; Fath et al., 2010; Jørgensen, 2000; Zhang et al., 2010, 2016; Zheng et al., in
 164 press) was employed to study the metabolic relationships between the sectors within an urban area with each
 165 sector being treated as a compartment in the urban network. The functional analysis frameworks of ENA are as
 166 demonstrated in the next section.

167 2.2.1. Throughflow Analysis

168 Throughflow Analysis transfers the initial direct and dimensional flow matrix into two dimensionless
 169 integral flow intensity matrices, in which N refers to the output-oriented flows while N' refers to the input-
 170 oriented flows. Firstly, the non-dimensional inter-compartment flow matrices, $G = (g_{ij})$ and $G' = (g'_{ij})$ are given
 171 as:

$$g_{ij} = \frac{f_{ij}}{T_j} \quad (3)$$

$$g'_{ij} = \frac{f_{ij}}{T_i} \quad (4)$$

172 The integral flow intensity matrices, N and N' can be calculated from G and G' as shown in the following
 173 equations:

$$N = G^0 + G^1 + G^2 + G^3 + \dots + G^n = (I - G)^{-1} \quad (5)$$

$$N' = (G')^0 + (G')^1 + G(G')^2 + (G')^3 + \dots + (G')^n = (I - G')^{-1} \quad (6)$$

174 The identity matrix G^0 and $(G')^0$ represent the self-flow of the compartments, G^1 and $(G')^1$ represent any one-
 175 step, direct flow between 2 compartments, G^2 and $(G')^2$ represents any two-step, indirect flow between 2
 176 compartments and G^n and $(G')^n$ represents the n -step, indirect flow between 2 compartments in the network. This
 177 enables the integral throughflow across multiple path-lengths to be considered in ENA.

178 2.2.2. Control Analysis

179 Control Analysis (Schramski et al., 2006) was conducted to quantify control and dependency relationships
 180 between the compartments. Control Allocation (*CA*) matrix reflects how the receiving sector controls the
 181 supplying sector, while Dependence Allocation (*DA*) Matrix reflects how the supplying sector depends on the
 182 receiving sector. The equations for *CA* and *DA*:

$$CA = [ca_{ij}] = \begin{cases} n_{ij} - n'_{ji} > 0, & ca_{ij} = \frac{n_{ij} - n'_{ji}}{\sum_{i=1}^m n_{ij} - n'_{ji}} \\ n_{ij} - n'_{ji} \leq 0, & ca_{ij} = 0 \end{cases} \quad (7)$$

$$DA = [da_{ij}] = \begin{cases} n_{ij} - n'_{ji} > 0, & da_{ij} = \frac{n_{ij} - n'_{ji}}{\sum_{j=1}^m n_{ij} - n'_{ji}} \\ n_{ij} - n'_{ji} \leq 0, & da_{ij} = 0 \end{cases} \quad (8)$$

183 The results control and dependency relationships are expressed on a scale of 0 to 1 based on to what extent the
 184 sectors are in control or dependent on one another.

185 2.2.3. Utility Analysis

186 In Utility Analysis (Patten 1991; Fath and Patten, 1998), the type of the inter-compartment relationships can
 187 be characterised by using the dimensionless integral utility intensity matrix, U , which is formulated as

$$U = D^0 + D^1 + D^2 + D^3 + \dots + D^n = (I - D)^{-1} \quad (9)$$

188 where D is the direct utility intensity matrix, in which the elements d_{ij} can be calculated as

$$d_{ij} = \frac{(f_{ij} - f_{ji})}{T_i} \quad (10)$$

189 From the positive or negative signs of the pair (u_{ij}, u_{ji}) in U matrix, the types of ecological relationship
 190 between compartments i and j can be determined, as summarised in Table 3.

191

(u_{ij}, u_{ji})	+	-
+	Mutualism	Exploitation
-	Exploitation	Competition

192 **Table 3:** Ecological relationship between two compartments based on sign pairs from U matrix.

193

- 194 • If the signs of u_{ij} and u_{ji} are both positive (+, +), both compartments benefit from each other and hence
 195 have a mutual relationship.
- 196 • If both u_{ij} and u_{ji} are negative (-, -), it means the two compartments are negatively influenced by each
 197 other and compete for resources available so there is a competitive relationship.
- 198 • If u_{ij} is positive while u_{ji} is negative, then compartment i receives positive benefit from compartment j
 199 while compartment j receives negative impact from compartment i , in which case, compartment j is the prey
 200 and is being exploited, while compartment i is the predator and exploits compartment j . Hence, it is an
 201 exploitation relationship when u_{ij} and u_{ji} have different signs (+, -), or vice versa.

202

203 To identify the overall inter-compartment relationships of the network, two dimensionless quantities,
 204 namely, mutualism index, M , and synergism index, S , were computed from U . M is defined as ratio of the total
 205 number of utilities with positives signs to the total number of utilities with negative signs in the U matrix.

$$M = \frac{S_+}{S_-} = \frac{\sum \max[\text{sgn}(u_{ij}), 0]}{-\sum \min[\text{sgn}(u_{ij}), 0]} \quad (11)$$

206 If M is greater than 1, it implies that there are more beneficial relationships than non-beneficial cases in the system
 207 and hence the system can be considered mutualistic and healthy. S is defined as ratio of the numerical sum of all
 208 positive utilities to numerical sum of all negative utilities in the overall U matrix. The value of S represents
 209 benefit-to-cost ratio of the system (Fath and Borrett, 2006).

$$S = \frac{\sum \max(u_{ij}, 0)}{-\sum \min(u_{ij}, 0)} \quad (12)$$

Hence, the overall benefit gained by a system is proportional to the S value which depends on the signs of
 the utility elements, u_{ij} computed from the flow amount between the sectors. High S value indicates more
 benefits at lower cost.

210 2.2.4. Network Community Detection

211 Networks are divided into modules or grouped in smaller clusters when the nodes of the same cluster have
 212 denser connections compared to other nodes. In this study, clusters of economic sectors were treated as
 213 communities and modularity measures the strength of these communities. Modularity of a network can be
 214 computed using a community detection algorithm (Blondel et al., 2008) to study the clustering properties of the
 215 nodes and classification of the community groups based on the flow weights. The algorithm determines the
 216 community classification by unfolding the hierarchical structure of the system and calculates the optimised

217 modularity based on the clustering properties of the network. It by-passes the resolution limit (Fortunato and
218 Barthélemy, 2006) to detect smaller communities in the given network of small number of nodes.

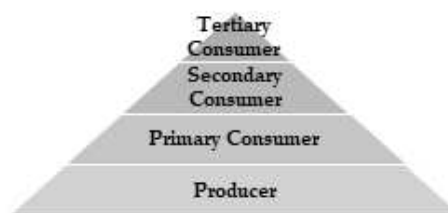
219 Network visualisation and community classification were carried out based on two flow conditions:
220 monetary-throughflow between 11 sectors, and throughflow density (throughflow per unit distance). For
221 comparison across all 35 urban areas under different flow conditions, the flow values in the datasets were
222 normalised over the total maximum flow across all the networks
223

224 3. Results and Discussion

225 Across all 35 functional urban areas in England and Wales listed in Table 1, Leeds, one of the major cities
226 in the UK, was used as the example to represent the common case observed in the results, unless stated otherwise.
227 This is because Leeds showed average performance and exhibited the urban structure commonly found in other
228 areas through in-depth investigations at different perspectives.

229 3.1 Intra-city Metabolism

230 From an ecological perspective, intra-city metabolism resembles a natural ecosystem consists of multiple
231 hierarchical levels. Individual units in different levels are connected through interactions with each other in the
232 form of a pyramidal structure based on the ecological characteristics (producer or consumer) of the units, as shown
233 in Fig. 2.



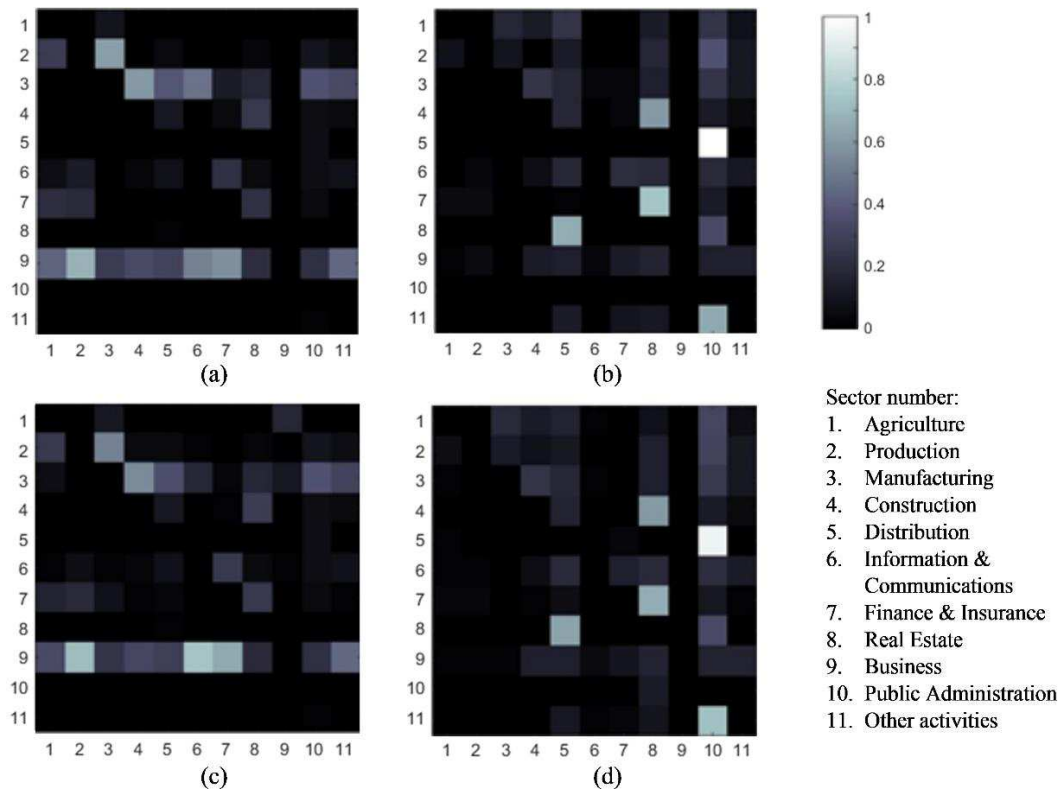
234

235

Fig. 2. Pyramidal structure showing the different hierarchical of an ecosystem.

236 Those units represent different roles in the ecosystem to maintain the functionality of the system and promote
237 organisational growth as a whole. From the lowest level, the producer supplies resources to the units in upper
238 levels to fulfil their needs or in other words, the upper levels survive on sufficient inputs from the lower levels.
239 These form unique paired relationships among the units in different hierarchical levels and the types of existing
240 relationship can be explored through ENA.

241 Control Analysis identifies the degrees of control relationship based on consumption-input and dependence
242 relationship based on production-output between the 11 sectors. Fig. 3 shows the results of network control (*CA*)
243 and network dependency (*DA*) relationships for the urban ecological network with a normalized scale from 0 to
244 1.



245

246

247

248

249

Fig. 3. Results of (a) network control (sector number in column controlled by row sector) and (b) network dependency (sector in column depended on row sector) of Leeds, and the average results of (c) network control (sector in column controlled by row sector) and (d) network dependency (sector in column depended on row sector) of all 35 functional urban areas.

250

251

252

253

254

255

256

257

258

259

260

261

262

263

264

265

266

267

268

269

270

271

272

273

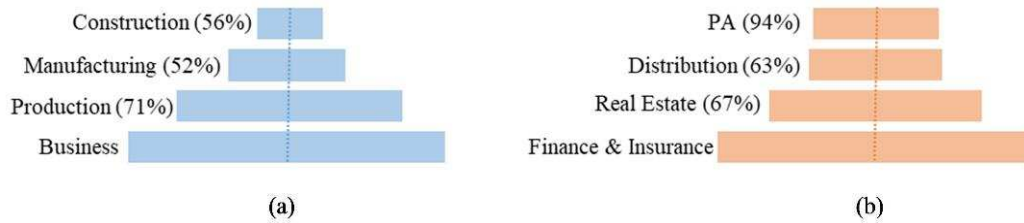
274

Network control result in Fig. 3a shows that Business was not controlled by any other sectors but it controlled the consumption-input of all 10 other sectors in Leeds network. The highest degree of control relationship was 74% over Production, followed by 68% control over Finance and Insurance. In terms of dependency relationship in Fig. 3b, Business was completely independent while the Public Administration was found to be highly dependent on the production-output of other sectors, in which it fully dependent on Distribution and not been depended on by any other sector in Leeds.

Furthermore, the average of *CA* and *DA* matrices across all 35 cases were computed to investigate the overall network control and dependency relationships in all 35 urban areas. From the average network control results in Fig. 3c, Business remained as the key controlling sector of resources consumption-input in those urban areas. In this context, identifying the significant control relationship in the urban ecological network helps in understanding the functions of each economic sector and the impacts on other sectors. For the case in Fig. 3c, the network control relationship between Business, Production, Manufacturing, Construction formed a structured ecological pyramid to demonstrate the resources supply chain from the producer at the lowest level to the top-levelled consumers, as shown in Fig. 4a. The chained relationship between these sectors formed a control hierarchy as the resources supply from the lower level controls the consumption of the level above it, and affects all the subsequent levels, under the same principle as the natural ecosystem pyramid shown in Fig. 2. To connect the producers to consumers, processes of material transformation at the intermediate levels were being controlled by the producers while it also had control over the consumers. However, due to the high population densities and intensive business activities in the urban areas, the Business sector remained in strong control over all other sectors, hence it was placed at the lowest level of the pyramid to show its dominance over the consumption of all the upper sectors despite of being a resources consumer in nature. This presents a challenge in regulating the supply and demand for resources in urban development planning to ensure sustainable consumptions with adequate production flows within the network.

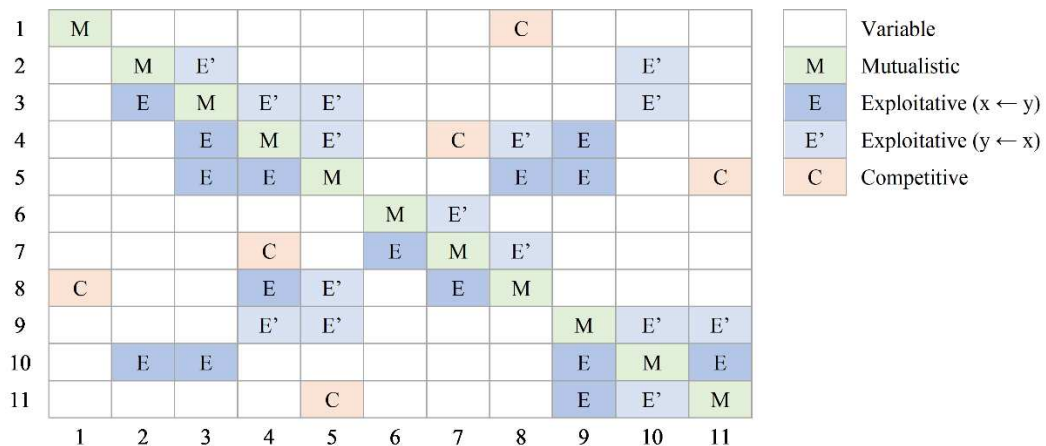
From the average network dependency results shown in Fig. 3d, dependency relationship was identified between Finance and Insurance, Real Estate, Distribution and Public Administration (PA). On the highest level

275 of the pyramid shown in Fig. 4b, PA activities such as education, social security and defence depended on the
 276 production of Distribution sector, including the services provided by the local transportation system and goods
 277 delivery. On the second highest level, Distribution was dependent on Real Estate on the lower level which in turn
 278 relied on the production of Finance and Insurance on the lowest level of the pyramid.



279
 280 **Fig. 4.** Pyramidal structure of urban ecosystem based on (a) CA and (b) DA results. The width (shown in
 281 percentage) of each level reflects the degree of control or dependency relationships between the sector and the
 282 sectors the lower level.

283 Further analysis on stable metabolic relationship identified the repetitive characteristics in the pairwise
 284 relationships which the 35 urban areas have in common. This was done by intersecting 35 sets of relationship
 285 matrices of all areas to find the common relationships. The results are tabulated in Fig. 5 as a symmetrical square
 286 matrix along the diagonal based on the types of relationship. Moreover, the exploitative relationship is directed to
 287 tell which sector is being exploited by the others. See Supplementary Table 4 for tabulated relationship matrices
 288 of 35 urban areas.



289
 290 **Fig. 5.** Stable relationships between the 11 sectors across all 35 urban areas.

291 Excluding self-flow at each sector for internal promotions (Patten, 1991), no stable mutualistic relationship
 292 was found in all 35 cases. Three pairs of competitive relationship were observed in six different sectors.
 293 Exploitative relationship dominated the overall network as fifteen pairs were observed, with the highest
 294 occurrence at the Distribution sector for exploiting others while the Business sector was mostly exploited by
 295 others. For instances, Distribution exploited Production, Manufacturing, Real Estate and Business. On the other
 296 hand, Business was being exploited by Construction, Distribution, Public Administration and Other Activities.

297 Fig. 6 shows the results of *M* and *S* indices from Utility Analysis on all 35 urban areas, in a decreasing order
 298 of the index values from left to right on the horizontal axes. Box plots are used to show the data distribution across
 299 all cases.

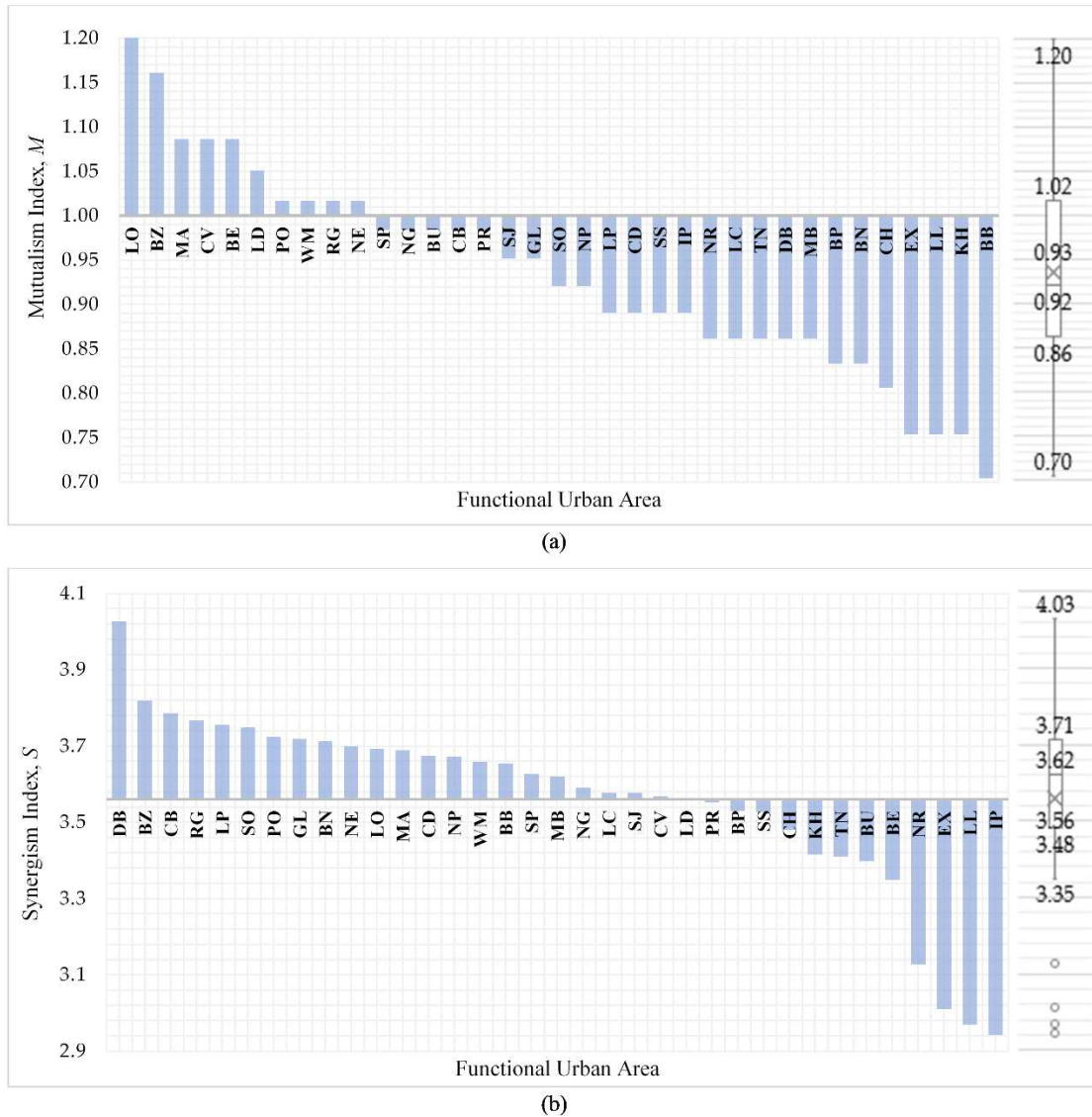


Fig. 6. Bar charts of (a) Mutualism index, M and (b) Synergism index, S of the 35 urban areas and the respective data distribution plot.

300

301

302

303

304

305

306

307

308

309

310

311

312

313

314

315

316

317

318

From Fig. 6a, only ten cases, which corresponded to seven urban areas in the ten highest populated areas and also Reading (Rank 27), Brighton and Hove (Rank 21), and Portsmouth (Rank 14) have mutualism index value greater than 1, indicating a healthy urban metabolic system. The average M across all 35 cases was 0.93 which implies only 48% of all utilities were positive, in which London had the highest mutualism index of 1.20 and Blackburn had the lowest, 0.70. It is worth noting that these areas have comparative synergism indices as shown in Fig. 7 and were both above the average value. In term of S , Leeds (Rank 6) lied at the average value of 3.56 with Derby (Rank 23) at the highest and Ipswich (Rank 30) was the lowest. With larger population in major urban areas, formation of a more diversified and matured economic structure strengthened the connections in the network to promote mutual benefits locally for growth.

By definition, M measures the overall system mutuality quantitatively by the number of positive or negative utility count observed while S takes into account of the numerical magnitude so it is affected by the quality of each count. From observation in Fig. 6a, M changed gradually from the highest value on the left to the lowest value on the right compared to the change in S which showed a larger difference in the values between two consecutive areas illustrated in Fig. 6b. The gap between the highest and the second highest S values was seven times larger than the gap between the second and third highest S values. According to the distribution of S data shown in the box plot, the four lowest values were the outliers in this case. This was due to the large differences

319 between the magnitudes of those positive utilities in the U matrix. The main contributor of those positive utilities
320 was the self-flow of a sector for internal benefits and promotions, so these observations suggest that the inter-
321 sectoral flows were less mutualistic than the internal flows and more prompted to exhibit an exploitative
322 relationship with other sectors. This is supported by the domination of exploitative relationships (Fig. 5) which
323 made up to 64% (Competitive 20; Mutualistic 16%) of the overall urban metabolic system across all 35 cases.

324 Findings from the Utility Analysis agreed with the pyramidal structure of the urban metabolic ecosystem
325 constructed based on the network control and dependency results from the Control Analysis. Business sector was
326 located at the lowest hierarchical level of the ecosystem as the limiting factor on the system's metabolism by
327 controlling the consumption of other sectors and it is also mostly exploited by other sectors as a consumer.

328 3.2 Network Community Structure

329 Structural Analysis studies the clustering of the economic sectors within the urban ecological network based
330 on the minimal nodal modularity to identify the classification of community groups formed among those sectors.
331 In this study, throughflow network of 35 urban areas were constructed to study the clustering properties of the
332 network community structure. A common structure was observed in majority of these areas showing the similar
333 community groups classification except for four sparsely-populated areas which exhibited a varied version in their
334 throughflow network structure. This was based on the total throughflow value calculated at each sector using
335 Throughflow Analysis to account for all direct and indirect flows across multiple path-lengths through other all
336 sectors within the same network. The throughflow value represents the integrated flows across the full network.
337 The clusters formed are known as community groups where the sectors belong to the same community group are
338 more strongly attached to one another. Classification of network community groups considered the modularity at
339 each node with one of the computing parameters being the resultant weighted throughflow value from all other
340 nodes across the fully connected network after normalisation.

341 Visualisation software was used to demonstrate the classification of colour-coded community groups in all
342 urban areas studied. The results of community groups classification based on throughflow network are as shown
343 in Fig. 7. The common network community structure was illustrated using the example of Leeds in 2011, which
344 shared the similar clustering structure with 30 other cases including some of the highly populated urban areas such
345 as London, Birmingham Manchester, Liverpool, Newcastle as well as areas with smaller population in Burnley,
346 Hastings and Cheltenham. The size of the nodes and edges are proportional to the overall degree and weight of
347 the flow respectively. The placement of nodes was arranged in a circular layout with descending order of weighted
348 in-degree to each node in counter-clockwise direction to show the consumption-input of resources at each sector.

349 As in Fig. 7a, the largest node, Manufacturing had the highest weighted overall degree as it plays an
350 important role in the processes of energy transformation as an intermediate consumer, connecting the producing
351 sector to the final-users. However, according to the placement order of the nodes in counter-clockwise direction,
352 Manufacturing had the lowest weighted in-degree of resources consumption flows into the sector, followed by
353 Business, implying that Manufacturing and Business sectors were the main producers in the network with high
354 output contributions and low input consumptions. In richer areas with fast growing business activities and higher
355 GVA per capita, such as London and Reading, the Business sector overtook Manufacturing as the largest node
356 within the intra-city network. An exceptional case is Kingston upon Hull where Construction was larger than
357 Business. On the other hand, Real Estate, had relatively high consumptions as it was ranked as the lowest in terms
358 of weighted in-degree among the 11 sectors although Agriculture was the smallest node with the lowest weighted
359 degree in all cases.

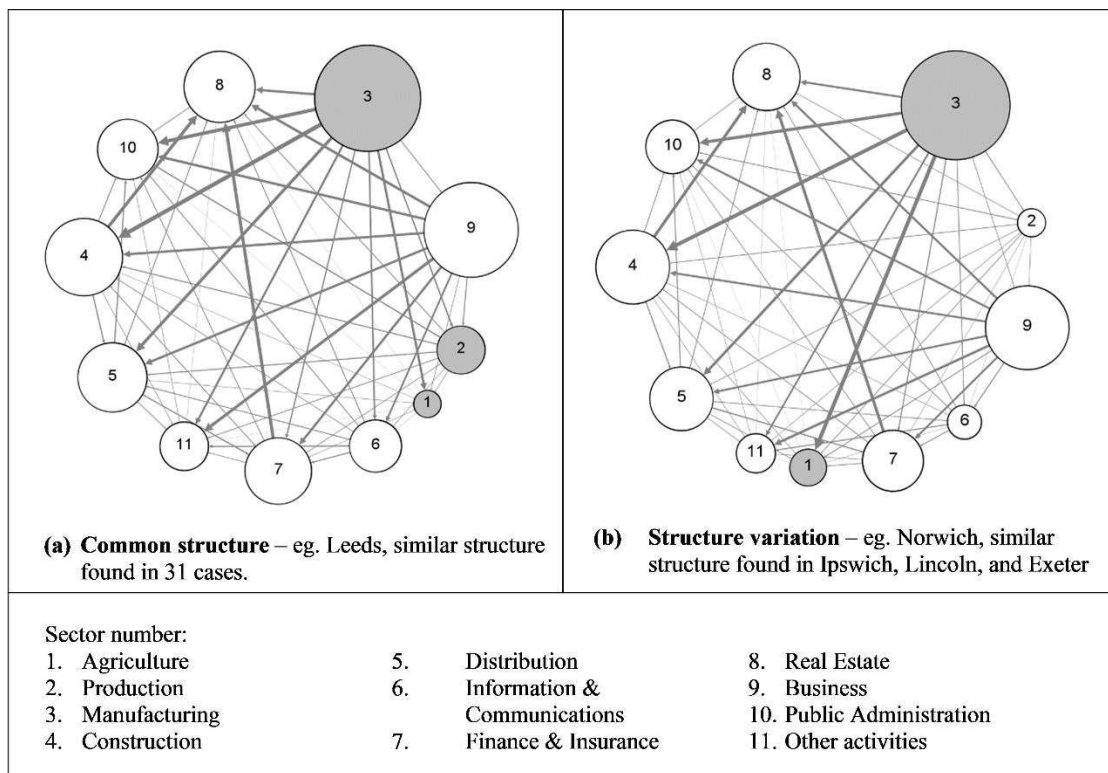
360 In terms of community group classifications, two clusters were formed which consist of eight and three
361 sectors respectively.

- 362 • Larger cluster: Business, Information and Communication, Finance and Insurance, Other Activities
363 (including arts, entertainment and household activities), Distribution, Construction, Public Administration
364 and Real Estate
- 365 • Smaller cluster: Manufacturing, Production and Agriculture

366 From the clustering structure, the producers and intermediate consumers in the small cluster had higher tendencies
367 to form a cluster among those sectors with stronger economic connections. The larger cluster in the network
368 consisted of mostly final consumers or end-use sectors in the ecosystem. The two largest nodes with the highest
369 overall weighted degrees, Manufacturing and Business, belonged to two different community groups. Hence, the
370 classification of the remaining nine sectors could be influenced and determined by the weightage of the flow

371 connections between the remaining nodes and the two largest nodes, representing the two clusters. In Leeds, the
 372 eight sectors in larger cluster were mainly the consumer-type receivers from Business sector while the remaining
 373 three sectors in the smaller cluster act as the producer-type suppliers to Business with supportive role.

374 A different type of community structure, as shown in Fig. 7b was observed in Norwich, Ipswich, Lincoln
 375 and Exeter. In these areas, the Production sector belonged to the large cluster dominated by Business and the
 376 smaller cluster consisted of two nodes: Manufacturing and Agriculture only. Comparing this result with the more
 377 common structure in Fig. 7a, the Production sector was more connected to consumer-type receivers in the larger
 378 cluster with more connections and increased its overall degree. This might be caused by overwhelming
 379 consumption of resources in these areas resulting in insufficient production to meet the high demand. Nonetheless,
 380 the types of economic activities (including mining, quarrying, electricity and water supplies) in Production sector
 381 indicates its fundamental role as a primary producer in an urban ecosystem. In this study, the analysis was limited
 382 to intra-city flows only hence, any inter-city supplies of resources such as export of local products to other regions
 383 was not considered. Further investigations on inter-city metabolism could explore the flows between different
 384 areas and their interactions with the external surroundings.



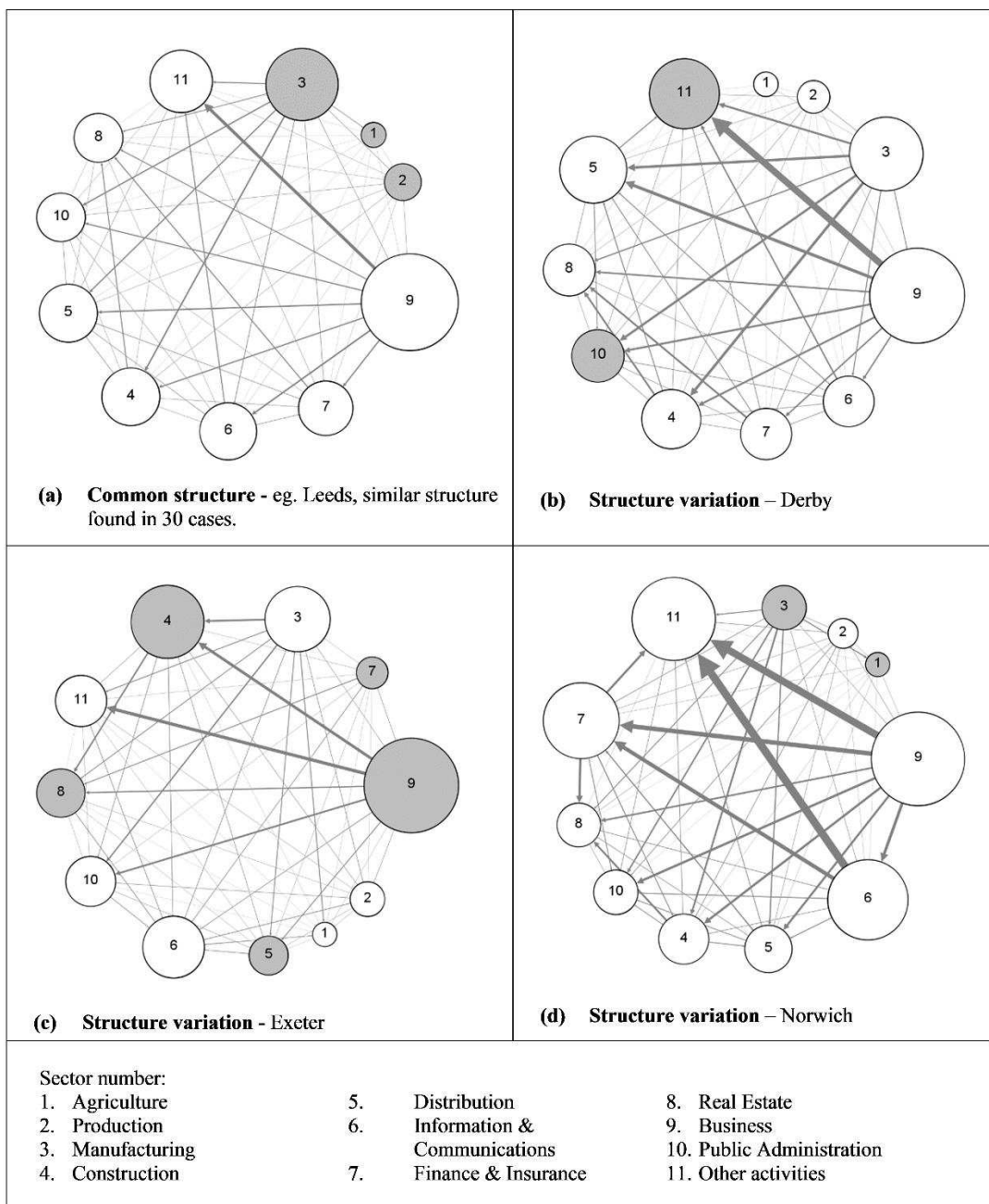
385

386 **Fig. 7.** Classification of community groups into two clusters based on throughflow network (white nodes for the
 387 large cluster and grey nodes for the small cluster) showing (a) the common structure in Leeds and (b) the
 388 variation observed in Norwich.

389 Investigations of the spatial impact of geographical distance between the sectors on network community
 390 structure gives throughflow density networks, as shown in Fig. 8. Classification of community groups based on
 391 throughflow density network in Fig. 8a were similar to the throughflow network in most cases with the common
 392 structure shown in Fig. 7a. The sectors were grouped based on its economic activities and functioning roles in the
 393 urban ecosystem, either consumers-type in the large cluster or producer-type in the small cluster. However, sizes
 394 of the node differed in the throughflow density networks because the weighted degree changed with the average
 395 spatial distance between the sectors. In the density networks, Business had higher degree and denser connections
 396 than Manufacturing and the size of the Manufacturing node decreased with low density due to the larger distance
 397 between industrial zones for manufacturing activities and the other consumers in the same urban area. In contrast,
 398 the biggest node, Business sector processed higher density flows due to its proximity benefits from closer location
 399 and higher accessibility to the consumers in other sectors.

400 In some cases, the lower degree and reduced dominance of Manufacturing sector in the density network
 401 resulted in more complicated interactions in the urban ecosystem when the impacts of spatial characteristics were
 402 considered. For example, the throughflow density network of Derby in Fig. 8b shows both the producers and
 403 consumers were found in the large cluster while the small cluster consisted of Public Administration and Other
 404 Activities only. The producer and consumer sectors are well spatially scattered and equally distributed across the
 405 area owing to the strategic geographical location of Derby in the Midlands, spanning the central region of England
 406 (Midlands Connect, 2017). Derby's highly connected resources network contributes to its highest synergism index
 407 ($S = 4.03$) and benefit-to-cost ratio across all 35 areas.

408 Another variation in Fig. 8c shows the different clustering properties in Exeter where the Manufacturing
 409 node was smaller than Business and Construction. In Norwich, classification of community groups based on
 410 throughflow density network shows a similar structure as its throughflow network except for the changes on the
 411 size of the nodes due to the spatial distribution of the sectors in the urban network, as shown in Fig. 8d.



412
 413 **Fig. 8.** Classification of community groups into two clusters based on throughflow density network (white nodes
 414 for the large cluster and grey nodes for the small cluster) showing (a) the common structure in Leeds and the
 415 variation observed in (b) Derby, (c) Exeter and (d) Norwich.

416 There were insufficient spatial data on several sectors in Blackpool and Burnley, resulting in smaller sample
417 sizes for the number of sector nodes in the network and therefore, Structural Analysis on clustering properties of
418 the throughflow density network of these areas are excluded in this study.

419 3.3 Implications and Limitations

420 The intra-city flow network, constructed with ENA and supplemented with the geographical distance
421 between the workplace sectors, represents the inter-connected structure of an urban ecosystem. The flows between
422 the sectors were projected in the network to study the distribution of resources within the boundary of a functional
423 urban area. Understanding the ecological relationships between the sectors and the classification of the community
424 groups in an urban network helps to identify the points of intervention for efficient policymaking with larger
425 impact by targeting the dominating sector with the strongest influence on other sectors. This provides a foundation
426 to build an effective resource network in urban areas through regulating the overall production and consumption
427 of the sectors through the chained relationships in the intra-city ecosystem.

428 Findings from the throughflow density networks provide a new dimension to the current scope of ENA
429 studies to address the spatial component of the system. This would have potentially contributed to a novel
430 investigation into the spatial properties of urban flows network with more structural variations in terms of the
431 network clustering and classification of community groups based on the flow densities. The current
432 implementation of flow densities, however, should not go unqualified. As presented in this study, a census-based
433 classification of workplace zones has been used to examine the spatial distance between the eleven sectors. This
434 mostly identifies the predominant activity taking place within a workplace zone and not necessarily articulated in
435 terms of the economic sectors under which the activities would fall. As such, the assignment of sectors to
436 individual zones has been primarily based on the likelihood of the sectors activity matching the classification
437 profile for a given zone. This has necessitated the use of average pairwise distance in this work by taking the
438 average distance between all zones tagged under the same classification of workplace sector within an urban area.
439 In strict terms, this would smooth out the pair-wise distance distribution between economic sectors. Besides, since
440 the intensity of activity within each workplace zone is unknown, distances are treated equally and unweighted
441 possibly biasing the mean distances used. Overcoming the effects of such aggregate approach would require a
442 further consideration of sectoral employment surveys and travel-to-work modes in order to better identify the
443 workplace zones associated with certain sectors and the intensity of activities take place in each zone so that the
444 spatial profile can be weighted based on the prominence of economic sectors.

445 On intra-city level, granularity of data remains the main constraint since scaling to aggregated urban level
446 from larger scales (eg. national and regional data) is required. Cross-boundary flows including imports, exports
447 and inter-city flows are excluded from the analysis of network community structure due to the limitations of data
448 available. The steady-state assumption was made to compensate for any unbalanced flows with external import
449 or export. As such, the downside would be negligence of the differential between inter-city and international trade
450 flows. Although the approach taken in this study managed to capture the interactions between the sectors at intra-
451 city level, there will be space for improvement if more detailed data becomes available to future researchers.

452 In this study, monetary transactions of the Input-Output Supply and Use Table were used as material flows
453 between the sectors within urban areas. Nonetheless, in reality, monetary and material flow accounts are non-
454 equivalent. To counterbalance for any non-equivalences between the flow values, there is a need to explore the
455 knowledge gaps in understanding of the correlation between monetary and material flows for different sectors in
456 future research. Other suggestions for further investigations are: (1) data acquisition at local urban level for each
457 urbanised area including inter-city flows to accurately account for all cross-boundary flows in and out of the area;
458 (2) trends and temporal changes in the metabolic relationships and community structure between the sectors within
459 the network; (3) the impacts of spatial distribution on the characteristics of metabolic relationships and the relevant
460 numerical indices.

461 4. Conclusion

462 The ENA results in this study described the metabolic characteristics of the urban system in England and
463 Wales as exploitative. The exploitative behaviour observed in the ecological network of 35 functional urban areas
464 suggests that their metabolic systems are still in developing phase for further improvements. The Business sector
465 was being exploited by others and also in control of the consumptions in most of the other sectors. The sector was

466 exploited as it was at deficit in terms of the resultant throughflow with higher outflows than inflows passing
467 through the Business node. As such, the sector also acted as the limiting node or the “gatekeeper” to control the
468 amount of resources received and consumed by other sectors. Highly concentrated business related activities and
469 services in cities have significant impact on urban metabolism. Mutualism and synergism indices generated prove
470 that London has the most matured system among those cities. Economic diversity in the urban areas with larger
471 population contributes to the development of healthy urban metabolic systems through balancing and regulating
472 the distributions of resources among different sectors in the cities based on various types of activities and demands
473 for different resources.

474 In terms of community structure, the classification of sectors shows the importance of the inter-relationship
475 within the organisation of each community class. In most of the areas, formation of the producer-type and
476 consumer-type clusters separated the economic sectors based on their respective hierarchical roles in the
477 ecosystem. The producer-type cluster maintains the foundation of resources supply chain to different sectors in
478 the cities while the consumer-type cluster focuses on the distribution of resources received by the consumer sectors
479 for final expenditure. The throughflow density network emphasizes on the impact of spatial distance between the
480 sectors within a functional urban area. The analysis considered the size of the city, proximity and accessibility of
481 those sectors. In the case of Derby, the geographical location of a city could also affect the community structure
482 of its ecological network. This result emphasises on the importance of addressing the impact of spatial distribution
483 in planning resource management strategies.

484 Understanding the correlations between the economic activities and their spatial distribution assists
485 policymakers in the decision-making process and implementation of sustainable resource management strategies.
486 This study has considered the intra-city network of all functional urban areas in England and Wales to provide a
487 better understanding for the characteristic sectoral exchange patterns in the overall urban system of England and
488 Wales which facilitates development of national levers for change, rather than solutions isolated to a single city.
489

490 **Author contributions**

491
492 Ling Min Tan, Hadi Arbabi, Danielle Densley Tingley and Martin Mayfield have designed the study. Ling Min
493 Tan, Hadi Arbabi, Qianqian Li and Yulan Sheng have undertaken the study. Ling Min Tan has critically analysed
494 the results and wrote the manuscript. Danielle Densley Tingley, Martin Mayfield and Daniel Coca contributed to
495 the discussion and the manuscript. All authors have given approval to the final version of the manuscript.
496

497 **Acknowledgements**

498
499 Ling Min Tan acknowledges support from the Grantham Centre for Sustainable Futures. Qianqian Li and Yulan
500 Sheng acknowledge support through Sheffield Undergraduate Research Experience (SURE) Network award. The
501 authors wish to thank Thamira Joy Valentine, Nathaniel Stanton and Elspeth B. Fraser for their contributions to
502 the broader project funded by SURE Network. Usual disclaimers apply.
503

504 **Reference**

- 505 Bai, X., 2016. Eight energy and material flow characteristics of urban ecosystems. *Ambio* 45, 819–830.
506 <https://doi.org/10.1007/s13280-016-0785-6>
- 507 Blondel, V.D., Guillaume, J.-L., Lambiotte, R., Lefebvre, E., 2008. Fast unfolding of communities in large
508 networks. <https://doi.org/10.1088/1742-5468/2008/10/P10008>
- 509 Cencic, O., Rechberger, H., 2008. Material flow analysis with software STAN. *J. Environ. Eng. Manag.* 18, 3–7.
- 510 Chen, S., Chen, B., 2015. Urban energy consumption: Different insights from energy flow analysis, input-output
511 analysis and ecological network analysis. *Appl. Energy* 138, 99–107.
512 <https://doi.org/10.1016/j.apenergy.2014.10.055>
- 513 [dataset] Cockings, S., Martin, D., Harfoot, A., 2015. A Classification of Workplace Zones for England and Wales
514 (COWZ-EW) Annex A: Profiles of Supergroups.
- 515 Department of Economic and Social Affairs (DESA), 2016. The World’s Cities in 2016 Data Booklet. Economic
516 and Social Affairs. United Nations, New York.

- 517 [dataset] Eurostat, 2017. Eurostat Statistics Explained. Glossary: Functional urban area. 2017.
518 http://ec.europa.eu/eurostat/statistics-explained/index.php/Glossary:Functional_urban_area (accessed 21 Jul
519 2017).
- 520 Fath, B.D., Patten, B.C., 1998. Network synergism: Emergence of positive relations in ecological systems. *Ecol.*
521 *Modell.* 107, 127–143. [https://doi.org/10.1016/S0304-3800\(97\)00213-5](https://doi.org/10.1016/S0304-3800(97)00213-5)
- 522 Fath, B.D., Borrett, S.R., 2006. A MATLAB?? function for Network Environ Analysis. *Environ. Model. Softw.*
523 21, 375–405. <https://doi.org/10.1016/j.envsoft.2004.11.007>
- 524 Fath, B.D., Killian, M.C., 2007. The relevance of ecological pyramids in community assemblages. *Ecol. Modell.*
525 208, 286–294. <https://doi.org/10.1016/J.ECOLMODEL.2007.06.001>
- 526 Fath B.D., Zhang, Y., Yang, Z., Li, S., 2010. Urban energy metabolism using ecological network analysis: Case
527 study of four Chinese cities. *Digital Proceedings of the 7th Biennial International Workshop "Advances in*
528 *Energy Studies 2010"*, 19-21 October 2010.
- 529 Fan, Y., Qiao, Q., Chen, W., 2017. Unified network analysis on the organization of an industrial metabolic system.
530 *Resour. Conserv. Recycl.* 125, 9–16. <https://doi.org/10.1016/J.RESCONREC.2017.05.009>
- 531 Finn, J.T., 1976. Measures of Ecosystem Structure and Function Derived from Analysis of Flows. *J. Theor. Biol.*
532 56, 363–380.
- 533 Fortunato, S., Barthélemy, M., 2006. Resolution limit in community detection. *Proc. Natl. Acad. Sci. USA* 104,
534 36-41. <https://doi.org/10.1073/pnas.0605965104>
- 535 Hannon B., 1973. The structure of ecosystems. *J. Theor. Biol.* 41, 535-546.
- 536 Huang, S.-L., 1998. Urban ecosystems, energetic hierarchies, and ecological economics of Taipei metropolis. *J.*
537 *Environ. Manage.* 52, 39–51. <https://doi.org/10.1006/jema.1997.0157>
- 538 Huang, S.-L., Chen, C.-W., 2009. Urbanization and Socioeconomic Metabolism in Taipei. *J. Ind. Ecol.* 13, 75–
539 93. <https://doi.org/10.1111/j.1530-9290.2008.00103.x>
- 540 Huang, S.-L., Hsu, W.-L., 2003. Materials flow analysis and emergy evaluation of Taipei's urban construction.
541 *Landsc. Urban Plan.* 63, 61–74.
- 542 Hunt, D.V.L., Leach, J.M., Lee, E., Bouch, C., Braithwaite, P., Rogers, C.D.F., 2014. Material Flow Analysis
543 (MFA) for Liveable Cities. 4th World Sustain. Forum 1–31. <https://doi.org/10.3390/wsf-4-f010>
- 544 Jørgensen, S.E., 2000. *Thermodynamics and Ecological Modelling*. CRC Press, Boca Raton.
- 545 Leontief W., 1986. *Input-output Economics*. 2nd ed. Oxford University Press, New York.
- 546 Midlands Connect, 2017. *Midlands Connect Strategy: Powering the Midlands Engine*. Birmingham.
- 547 Newcombe, K., Kalma, J.D., Aston, A.R., 2017. The Case of Hong Kong 7, 3–15.
- 548 Newman, P.W.G., 1999. Sustainability and cities: Extending the metabolism model. *Landsc. Urban Plan.* 44, 219–
549 226. [https://doi.org/10.1016/S0169-2046\(99\)00009-2](https://doi.org/10.1016/S0169-2046(99)00009-2)
- 550 Odum, H.T., 1976. Energy quality and carrying capacity of the earth. Response at Prize Ceremony, Institute de la
551 Vie, Paris. *Trop. Ecol.* 16, 1-8.
- 552 Odum, H.T., 1996. *Environmental Accounting, Emergy and Environmental Decision Making*. Wiley, New York
553 pp. 360.
- 554 [dataset] Office for National Statistics (ONS), 2012. Census 2011: Key Statistics for England and Wales, March
555 2011. Natl Stat 2017.
556 [https://www.ons.gov.uk/peoplepopulationandcommunity/populationandmigration/populationestimates/bull
557 etins/2011censuskeystatisticsforenglandandwales/2012-12-11](https://www.ons.gov.uk/peoplepopulationandcommunity/populationandmigration/populationestimates/bulletins/2011censuskeystatisticsforenglandandwales/2012-12-11) (accessed 21 Jul 2017)
- 558 [dataset] Office for National Statistics (ONS), 2017a. Supply and Use Tables 1997–2014. Off Natl Stat 2017.
559 [https://www.ons.gov.uk/economy/nationalaccounts/supplyandusetables/datasets/inputoutputsupplyanduset
560 ables](https://www.ons.gov.uk/economy/nationalaccounts/supplyandusetables/datasets/inputoutputsupplyandusetables) (accessed 21 Jul 2017).
- 561 [dataset] Office for National Statistics (ONS), 2017b. Regional GVA(I) by local authority in the UK. Off Natl
562 Stat 2017.
563 [https://www.ons.gov.uk/economy/grossvalueaddedgva/datasets/regionalgvaibylocalauthorityintheuk
564](https://www.ons.gov.uk/economy/grossvalueaddedgva/datasets/regionalgvaibylocalauthorityintheuk) (accessed 21 Jul 2017).

- 565 [dataset] Office for National Statistics (ONS), 2017c. Geoportal Office for National Statistics. Functional urban
566 area boundaries, Urban Audit Functional Urban Areas in Great Britain as at 31 December 2011. Natl Stat
567 2017. [http://geoportal.statistics.gov.uk/datasets/urban-audit-v-functional-urban-areas-december-2011-](http://geoportal.statistics.gov.uk/datasets/urban-audit-v-functional-urban-areas-december-2011-boundaries?geometry=-14.079%2C50.169%2C16.133%2C54.844)
568 [boundaries?geometry=-14.079%2C50.169%2C16.133%2C54.844](http://geoportal.statistics.gov.uk/datasets/urban-audit-v-functional-urban-areas-december-2011-boundaries?geometry=-14.079%2C50.169%2C16.133%2C54.844) (accessed 21 Jul 2017)
- 569 [dataset] Office for National Statistics (ONS), 2017d. UK SIC 2007. Natl Stat 2017.
570 [https://www.ons.gov.uk/methodology/classificationsandstandards/ukstandardindustrialclassificationofecon-](https://www.ons.gov.uk/methodology/classificationsandstandards/ukstandardindustrialclassificationofeconomicactivities/uksic2007)
571 [omicactivities/uksic2007](https://www.ons.gov.uk/methodology/classificationsandstandards/ukstandardindustrialclassificationofeconomicactivities/uksic2007) (accessed 21 Jul 2017)
- 572 Page, J., Grange, N., Kirkpatrick, N., 2008. The Integrated Resource Management (IRM) model—a guidance tool
573 for sustainable urban design. *Passiv. Low Energy Archit. 2008 Conf.*
- 574 Patten, B.C., 1982. Environs: Relativistic Elementary Particles for Ecology. *Source Am. Nat.* 119, 179–219.
- 575 Patten B.C., 1991. Network ecology: Indirect determination of the life-environment relationship in ecosystems,
576 in: M. Higgashi, & T. P. Burns (Eds.), *Theoretical studies of ecosystems: The network perspective*. Cambridge
577 University Press, New York, pp. 288-351.
- 578 Ravalde, T., Keirstead, J., 2015. Comparing performance metrics for multi-resource systems: the case of urban
579 metabolism. *J. Clean. Prod.* 163, S241-S253. <https://doi.org/10.1016/j.jclepro.2015.10.118>
- 580 Schramski, J.R., Gattie, D.K., Patten, B.C., Borrett, S.R., Fath, B.D., Thomas, C.R., Whipple, S.J., 2006. Indirect
581 effects and distributed control in ecosystems: Distributed control in the environ networks of a seven-
582 compartment model of nitrogen flow in the Neuse River Estuary, USA—Steady-state analysis. *Ecol. Modell.*
583 194, 189–201. <https://doi.org/10.1016/J.ECOLMODEL.2005.10.012>
- 584 Szyrmer, J., Ulanowicz, R.E., 1987. Total flows in ecosystems. *Ecol. Modell.* 35, 123–136.
585 [https://doi.org/10.1016/0304-3800\(87\)90094-9](https://doi.org/10.1016/0304-3800(87)90094-9)
- 586 Warren-Rhodes, K., Koenig, A., 2001. Ecosystem appropriation by Hong Kong and its implications for
587 sustainable development. *Ecol. Econ.* 39, 347–359. [https://doi.org/10.1016/S0921-8009\(01\)00194-X](https://doi.org/10.1016/S0921-8009(01)00194-X)
- 588 Wolman, A., 1965. The metabolism of cities. *Sci. Am.* 213 (3), 179-190.
- 589 World Bank, 2014. World Development Indicators 2014. World Development Indicators. Washington, DC. ©
590 World Bank. <https://openknowledge.worldbank.org/handle/10986/18237> License: CC BY 3.0 IGO.
- 591 Zhang, Y., Xia, L., Fath, B.D., Yang, Z., Yin, X., Su, M., Liu, G., Li, Y., 2016. Development of a spatially explicit
592 network model of urban metabolism and analysis of the distribution of ecological relationships: case study
593 of Beijing, China. *J. Clean. Prod.* 112, 4304–4317. <https://doi.org/10.1016/J.JCLEPRO.2015.06.052>
- 594 Zhang, Y., Yang, Z., Fath, B.D., Li, S., 2010. Ecological network analysis of an urban energy metabolic system:
595 Model development, and a case study of four Chinese cities. *Ecol. Modell.* 221, 1865–1879.
596 <https://doi.org/10.1016/j.ecolmodel.2010.05.006>
- 597 Zheng, H., Wang, X., Li, M., Zhang, Y., Fan, Y., in press. Interregional trade among regions of urban energy
598 metabolism: A case study between Beijing-Tianjin-Hebei and others in China. *Resour. Conserv. Recycl.*
599 <https://doi.org/10.1016/J.RESCONREC.2017.05.010>
- 600 Zucchetto, J., 1975. Energy-economic theory and mathematical models for combining the systems of man and
601 nature, case study: The urban region of Miami, Florida. *Ecol. Modell.* 1, 241–268.
602 [https://doi.org/10.1016/0304-3800\(75\)90010-1](https://doi.org/10.1016/0304-3800(75)90010-1)