

This is a repository copy of *Cardiac rehabilitation and physical activity : systematic review and meta-analysis*.

White Rose Research Online URL for this paper:
<https://eprints.whiterose.ac.uk/133799/>

Version: Published Version

Article:

Dibben, Grace Olivia, Dalal, Hasnain M, Taylor, Rod S et al. (3 more authors) (2018)
Cardiac rehabilitation and physical activity : systematic review and meta-analysis. *Heart*.
pp. 1-10. ISSN 1468-201X

<https://doi.org/10.1136/heartjnl-2017-312832>

Reuse

This article is distributed under the terms of the Creative Commons Attribution (CC BY) licence. This licence allows you to distribute, remix, tweak, and build upon the work, even commercially, as long as you credit the authors for the original work. More information and the full terms of the licence here:
<https://creativecommons.org/licenses/>

Takedown

If you consider content in White Rose Research Online to be in breach of UK law, please notify us by emailing eprints@whiterose.ac.uk including the URL of the record and the reason for the withdrawal request.



OPEN ACCESS

Cardiac rehabilitation and physical activity: systematic review and meta-analysis

Grace Olivia Dibben,¹ Hasnain M Dalal,^{1,2} Rod S Taylor,² Patrick Doherty,³ Lars Hermann Tang,⁴ Melvyn Hillsdon⁵

► Additional material is published online only. To view please visit the journal online (<http://dx.doi.org/10.1136/heartjnl-2017-312832>).

¹European Centre for Environment and Human Health, Knowledge Spa, Royal Cornwall Hospitals NHS Trust, University of Exeter Medical School, Truro, UK

²Institute of Health Research (Primary Care), University of Exeter Medical School, Exeter, UK

³Department of Health Sciences, University of York, York, UK

⁴National Knowledge Centre for Rehabilitation and Palliative Care, Odense University Hospital, University of Southern Denmark, Odense, Denmark

⁵Department of Sport and Health Sciences, University of Exeter, Exeter, UK

Correspondence to

Grace Olivia Dibben, Knowledge Spa, Royal Cornwall Hospitals NHS Trust, University of Exeter Medical School, Truro TR13HD, UK; gd318@exeter.ac.uk

Received 8 December 2017

Revised 12 March 2018

Accepted 14 March 2018

ABSTRACT

Objective To undertake a systematic review and meta-analysis to assess the impact of cardiac rehabilitation (CR) on physical activity (PA) levels of patients with heart disease and the methodological quality of these studies.

Methods Databases (MEDLINE, EMBASE, CENTRAL, CINAHL, PsychINFO and SportDiscus) were searched without language restriction from inception to January 2017 for randomised controlled trials (RCTs) comparing CR to usual care control in adults with heart failure (HF) or coronary heart disease (CHD) and measuring PA subjectively or objectively. The direction of PA difference between CR and control was summarised using vote counting (ie, counting the positive, negative and non-significant results) and meta-analysis.

Results Forty RCTs, (6480 patients: 5825 CHD, 655 HF) were included with 26% (38/145) PA results showing a statistically significant improvement in PA levels with CR compared with control. This pattern of results appeared consistent regardless of type of CR intervention (comprehensive vs exercise-only) or PA measurement (objective vs subjective). Meta-analysis showed PA increases in the metrics of steps/day (1423, 95% CI 757.07 to 2089.43, $p < 0.0001$) and proportion of patients categorised as physically active (relative risk 1.55, 95% CI 1.19 to 2.02, $p = 0.001$). The included trials were at high risk of bias, and the quality of the PA assessment and reporting was relatively poor.

Conclusion Overall, there is moderate evidence of an increase in PA with CR participation compared with control. High-quality trials are required, with robust PA measurement and data analysis methods, to assess if CR definitely leads to important improvements in PA.

INTRODUCTION

Physical activity (PA) is defined as any bodily movement produced by skeletal muscles resulting in energy expenditure beyond resting expenditure.¹ The current UK recommendation for PA in adults and older adults is ≥ 150 min of moderate intensity PA per week.² This is based on a number of systematic reviews and consensus statement, consistently identifying 150 min/week as providing considerable health benefits, including reduced all-cause mortality, reduced risk factors for chronic diseases, improved cardiovascular fitness and quality of life.^{2,3} This is also the standard PA recommendation for patients with cardiac disease by the British Association for Cardiovascular Prevention and Rehabilitation and the Scottish Intercollegiate Guidelines Network.^{4,5}

The benefits of cardiac rehabilitation (CR) participation for those with coronary heart disease (CHD) and heart failure (HF) are well established and

include reduced cardiovascular mortality, reduced risk of hospital admissions, improved exercise capacity and health-related quality of life.^{6,7} A key aim of CR is to increase total daily energy expenditure in addition to exercise capacity.² However, previous observational studies demonstrated that many patients with heart disease (pre-CR and post-CR) are failing to meet recommended daily PA levels^{8,9} and the extent that CR impacts on PA levels of patients remains unclear.

While two systematic reviews to date have indicated inadequate evidence of an impact of CR participation on PA levels of patients with CHD,^{10,11} these studies have limitations. Neither included studies involving patients with HF nor attempted meta-analysis due to the heterogeneity of CR interventions. Therefore, an updated systematic review with an improved search strategy and broader population inclusion criteria is justified.

The aim of this systematic review and meta-analysis of randomised controlled trials (RCTs) was twofold. First, to clarify the impact of CR participation on PA levels of patients with CHD and HF. Second, to review the methodological quality of PA outcomes reported in these trials.

METHODS

The protocol was registered on PROSPERO (CRD42017055137). We conducted and report this systematic review in accordance with the Preferred Reporting Items for Systematic Reviews and Meta-analyse statement.¹²

Search strategy and inclusion criteria

Details of the search strategy and inclusion criteria are provided in the online Supplementary file 1. The full search strategy is provided in the online Supplementary file 2.

Data extraction and risk of bias assessment

A standardised data extraction form was used to extract study characteristics, patient characteristics, intervention and control details, PA measurement method and outcome data at all follow-up time points. Multiple publications of the same study were assessed for additional data and presented as a single RCT (see online Supplementary file 3).

The Cochrane Collaboration's tool for assessing risk of bias was used to assess the quality of included studies.¹³ Data extraction and risk of bias assessment were initially completed by a single reviewer (GD) and then checked for accuracy by one other reviewer (MH, HD or RST). Disagreement was resolved by discussion.



To cite: Dibben GO, Dalal HM, Taylor RS, *et al.* Heart Epub ahead of print: [please include Day Month Year]. doi:10.1136/heartjnl-2017-312832

Data synthesis and meta-analysis

Due to the wide range of PA metrics reported across studies, we first summarised the direction of PA results using a vote counting approach¹³ (quantifying studies on the basis of their positive, negative or non-significant results). Given the wide range of PA measures, we decided against using standardised effect size for meta-analysis and instead conducted meta-analysis where two or more studies reported the same units of PA measurement. Meta-analysis was completed on all follow-up time points apart from one outcome measure (proportion of patients categorised as physically active) where there was sufficient data to separate into short-term (≤ 12 months post-CR) and long-term (> 12 months post-CR) follow-up.

Given the clinical heterogeneity of the included studies, random-effects models were used to pool data. Statistical heterogeneity was assessed using the I^2 statistic. Binary outcomes for each study were pooled as relative risks (RR) and continuous outcomes as mean differences (MD). Meta-analysis results were reported as means and 95% CIs. A two-tailed p value of ≤ 0.05 was considered statistically significant. Analyses were performed in Review Manager (RevMan V.5.3, The Cochrane Collaboration) or Stata V.14.

We explored the effect of various potential treatment effect modifiers by stratifying the vote counting results, that is, setting of CR (centre vs home based), patient group (CHD vs HF), publication date (pre-1990, representing the time of major changes in

drug and device management of CHD and HF), dose of exercise intervention (dose=number of weeks of exercise training \times average sessions/week \times average duration of session in minutes. Dose ≥ 2000 units (median) vs dose < 2000 units); objective versus subjective PA measures and method of PA statistical analysis. Studies lacking enough information to calculate dose were omitted from the analysis.

RESULTS

Study selection

Figure 1 summarises the screening process resulting in 47 publications across 40 RCTs included in the review.

Characteristics of included studies

The 40 RCTs, all published in English, included a total of 6480 patients with cardiac disease (5825 CHD, 655 HF). A summary of study characteristics is shown in table 1. Individual study characteristics are detailed in the online Supplementary file 4.

PA measures reported

In total, 28 studies measured PA using subjective approaches, 10 studies used objective methods and two studies used a combination of both. Across all studies, 45 different PA metrics were used (median 1.5, range 1–10). Details of individual study PA

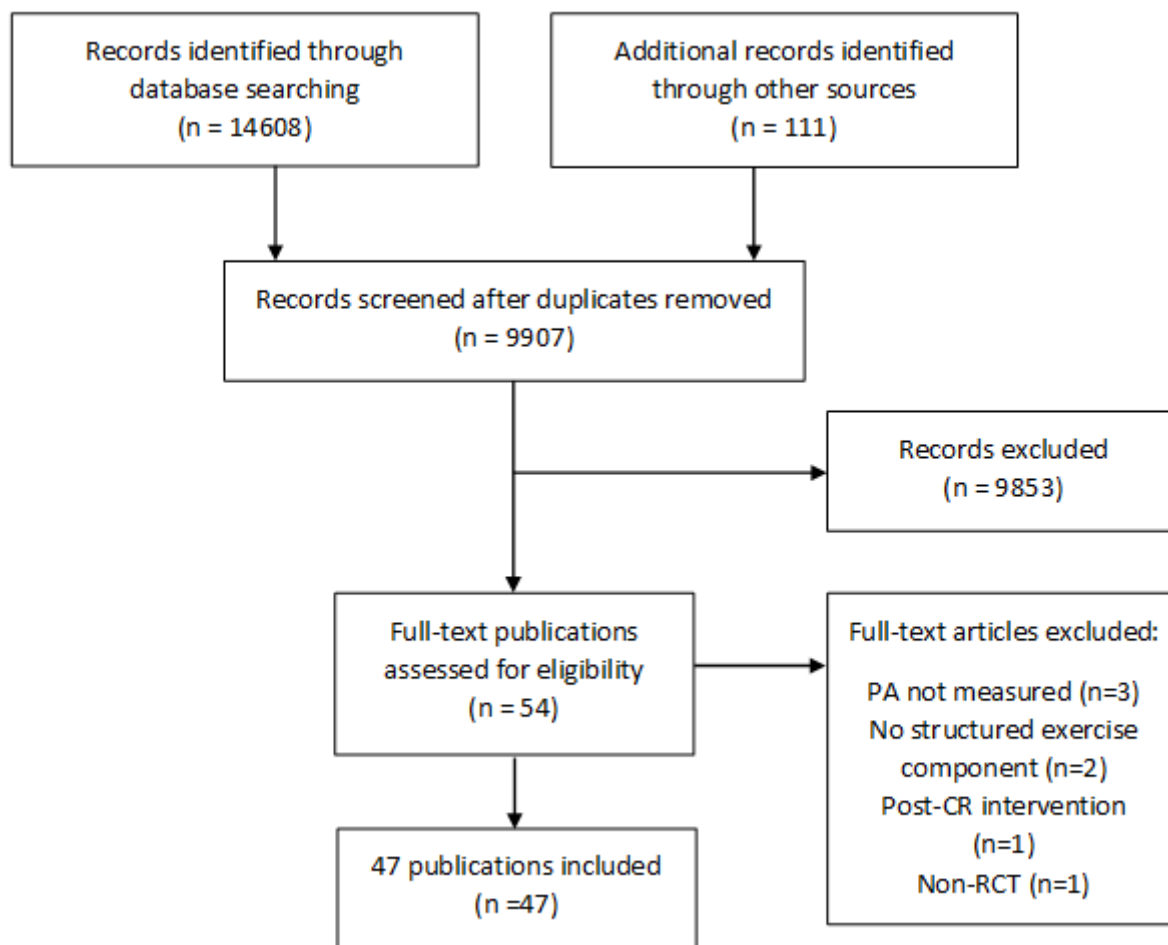


Figure 1 Preferred Reporting Items for Systematic Reviews and Meta-analyses flow chart of search process. CR, cardiac rehabilitation; PA, physical activity; RCT, randomised controlled trial.

Table 1 Summary of study characteristics

Characteristic	Number of studies (%) or median (range)
Multicentre randomised controlled trial	10 (25)
Exercise only	17 (42.5)
Cardiac rehabilitation location	
Home based	10 (25)
Centre based	23 (57.5)
Both	7 (17.5)
Sample size	89.5 (19–1813)
<50	10 (25)
51–100	14 (35)
>100	16 (40)
Publication date	
1970–1979	1 (2.5)
1980–1989	5 (12.5)
1990–1999	12 (30)
2000–2009	10 (25)
2010–2017	12 (30)
Study location	
Europe	25 (62.5)
North America	10 (25)
Asia/Australia	5 (12.5)
Sex	
Male only	6 (15)
Female only	1 (2.5)
Both	32 (80)
Not reported	1 (2.5)
Age (years)*	58.3 (47–81)
Diagnosis	
Coronary heart disease	28 (70)
Heart failure	10 (25)
Both	2 (5)
Follow-up (months)	12 (1.5–120)

*Median of study means.

measurement methods including a summary is presented in the online Supplementary file 5.

Risk of bias assessment

Risk of bias assessments for each study are summarised in [figure 2](#). All studies were assigned high risk in blinding of participants and personnel due to the nature of CR. The most prevalent methodological issues were non-adequate description of randomisation (25/40, 62.5%), allocation concealment (27/40, 67.5%) and blinding of PA outcome assessment (26/40, 65%). There was high risk of bias in 50% (20/40) trials for incomplete outcome data. Most trials were low risk for selective reporting (33/40, 82.5%), balanced groups at baseline (34/40, 85%) and were free of cointerventions (35/40, 87.5%).

Impact of CR participation on PA levels

Vote counting

A total of 145 CR versus control PA comparisons were reported across all studies (online Supplementary file 6). Overall, 26% of results showed a statistically significant improvement in PA with CR ([table 2](#)).

Stratified analysis

The pattern of results was similar whether PA measurement was objective or subjective (online Supplementary file 7). The

statistical methods used across the studies were varied. The majority reported a p value for between-group differences. Comparing the direction of results by statistical method showed a greater number of positive results reported when the p value for interaction time×group was used (online Supplementary file 8). As numbers were small, this is unlikely to be of significance.

There was a higher proportion of non-significant results (86% vs 63%) and fewer positive results (10% vs 32%) in studies including patients with HF compared with studies with CHD (online Supplementary file 9). Removing the results from studies conducted prior to 1990 or those based on exercise frequency did not affect the direction of results (online Supplementary file 10).

CR intervention

[Table 3](#) shows an increased number of positive results with home-based CR interventions compared with centre-based interventions. Studies with a higher exercise dose also produced a slightly increased number of positive results compared with studies with a lower exercise dose (online Supplementary file 11). The pattern of results was similar when comparing studies of comprehensive CR to exercise-only CR studies (online Supplementary file 12).

Meta-analyses

Steps/day

Five studies used mean steps/day as a measure of PA assessed by either pedometer^{14–16} or accelerometer.^{17–18} Pooling results across studies showed compared with control, CR participation was associated with an increase in mean steps/day (1423, 95% CI 757.07 to 2089.43, $p<0.0001$; [figure 3](#)) at short-term follow-up (median 3, range 1.5–12 months). With no evidence of statistical heterogeneity ($I^2=0\%$, $p=0.845$).

Energy expenditure

Energy expenditure (kcal/week) was estimated via questionnaire in three studies (median follow-up time 12 months, range 32 weeks–72 months).^{19–21} Meta-analysis showed that CR participation was associated with an increase in energy expenditure compared with control (878.4, 95% CI 433.83 to 1323.01, $p=0.0001$). Test for statistical heterogeneity was significant ($I^2=70\%$, $p=0.04$).

Sedentary time, light PA and moderate–vigorous PA (min/day)

There was no impact on mean min/day spent sedentary or sitting between CR and control (−10.9, 95% CI −39.02 to 17.20, $p=0.45$; [figure 4A](#)) based on two studies estimating this objectively via accelerometer^{14–18} and subjectively via International Physical Activity Questionnaire (IPAQ),²² at 9 weeks follow-up (median, range 6–12 weeks). There was no evidence of a difference in mean min/day spent in light intensity PA in CR compared with control (−6.6, 95% CI −45.09 to 31.92, $p=0.74$; [figure 4B](#)) based on two studies reporting this outcome via accelerometer²³ and IPAQ,²² at 9.5 weeks follow-up (median, range 9–10 weeks). There was no difference in mean min/day spent in moderate–vigorous PA in CR compared with control (8.5, 95% CI −1.44 to 18.44, $p=0.09$; [figure 4C](#)), measured via accelerometer^{18–23} and IPAQ,²² at 9 weeks follow-up (median, range 6–10 weeks).

Proportion of patients categorised as physically active (short-term follow-up ≤12 months)

CR increased the proportion of patients categorised as ‘physically active’, measured at short-term follow-up (median 6 months, range 0–12 months) across nine studies (RR 1.55, 95% CI 1.19

	Random sequence generation	Allocation concealment	Blinding of participants and personnel	Blinding of outcome assessment	Incomplete outcome data addressed	Selective reporting	Groups balanced at baseline	Both groups received the same treatment except intervention
Astengo et al. 2010 ⁴⁰	?	?	-	?	+	?	+	+
Bengtsson 1983 ³³	?	?	-	?	-	+	+	+
Bertie et al. 1992 ⁴¹	?	?	-	?	-	+	+	+
Borland et al. 2014 ¹⁴	+	+	-	+	+	+	+	+
Carlsson et al. 1997 ²⁹	?	?	-	?	+	+	+	+
Cowie et al. 2011 ¹⁷	?	+	-	+	-	+	-	+
DeBusk et al. 1979 ⁴²	?	?	-	?	+	+	+	-
Devi et al. 2014 ¹⁸	+	+	-	+	+	+	+	+
Engblom et al. 1992 ²⁴	?	?	-	+	+	+	+	+
Erdman et al. 1986 ³⁰	+	?	-	?	-	+	?	-
Gottlieb et al. 1999 ⁴³	?	?	-	?	+	-	+	+
Gulanick 1991 ⁴⁴	?	?	-	?	+	+	+	?
Hämäläinen et al. 1989 ²⁵	?	?	-	?	-	-	+	+
Hambrecht et al. 1993 ¹⁹	?	?	-	?	-	+	+	+
Heath et al. 1987 ²⁰	?	?	-	?	?	+	-	-
Higgins et al. 2001 ¹³	?	?	-	?	-	+	+	-
Houle et al. 2011 ¹⁵	+	?	-	?	-	+	+	+
Lidell & Fridlund 1996 ³¹	?	?	-	?	-	+	+	+
Maddison et al. 2015 ⁴⁵	+	?	-	+	+	-	+	+
Mueller et al. 2007 ²¹	?	?	-	?	-	+	+	+
Naser et al. 2008 ⁴⁶	+	+	-	?	+	+	+	+
Oldenburg et al. 2014 ⁴⁷	?	?	-	?	+	+	+	+
Oliveira et al. 2014 ²²	+	+	-	+	-	-	+	+
Ornish et al. 1998 ⁴⁸	?	?	-	+	-	+	+	+
Otterstad et al. 2003 ²⁸	?	+	-	?	?	+	+	+
Reid et al. 2011 ¹⁶	+	+	-	+	-	+	+	+
Ribeiro et al. 2012 ²³	+	+	-	+	+	-	+	+
Senden et al. 2005 ⁴⁹	?	?	-	?	-	+	+	+
Sivarajan et al. 1982 ⁵⁰	+	?	-	?	-	+	+	+
Stähle et al. 1999 ⁵¹	?	?	-	?	+	+	+	+
Todd & Ballantyne 1992 ⁵²	+	?	-	?	-	+	-	+
Toobert et al. 1998 ⁵³	?	?	-	?	+	-	+	+
Van den Berg-Emons et al. 2004 ⁵⁴	?	?	-	?	?	+	-	+
Wall et al. 2009 ⁵⁵	?	?	-	?	-	+	+	+
Wang et al. 2016 ⁵⁶	+	+	-	?	+	+	+	+
West et al. 2012 ²⁷	?	+	-	+	+	+	+	+
Willenheimer et al. 2001 ⁵⁷	?	?	-	+	-	+	+	+
Witham et al. 2007 ⁵⁸	+	+	-	+	-	+	+	+
Witham et al. 2012 ⁵⁹	+	+	-	+	+	+	-	+
Zwisler et al. 2008 ³²	+	+	-	+	-	+	+	+

Figure 2 Quality appraisal. + (green), low risk of bias; ? (yellow), unclear risk of bias; - (red), high risk of bias.⁴⁰⁻⁵⁹

Table 2 Vote counting

Direction of result	Number of results (%)
PA in CR same as control ($p>0.05$)	100 (69%)
PA in CR higher than control ($p\leq 0.05$)	38 (26%)
PA in control higher than CR ($p\leq 0.05$)	2 (1%)
PA difference between CR and control not clear (no p value reported)	5 (3%)
Total	145

CR, cardiac rehabilitation; PA, physical activity.

to 2.02, $p=0.001$; [figure 5A](#)). There was evidence of substantial statistical heterogeneity ($I^2=87\%$, $p<0.00001$). The definition of ‘physically active’ varied across studies: that is, exercise frequency $\geq 3\times/\text{week}$,²⁴ exercising $\geq 3\times/\text{week}$ for 20 min,^{25 26} exercising $>100\text{kcal}/\text{day}$,²⁷ average daily steps >7500 ,¹⁵ exercising for $>1\text{hour}/\text{week}$,²⁸ regularly training (defined as either walking or cycling $\geq 30\text{min}$ daily, sport activities once weekly or vigorous physical training)²⁹ and two studies did not provide any definition.^{30 31}

Proportion of patients categorised as physically active(long-term follow-up >12 months)

CR increased the proportion of patients considered physically active, measured at long-term follow-up (median 5 years, range 2–5 years) in three studies^{28 30 31} (RR 1.48, 95% CI 1.19 to 1.83, $p=0.0003$; [figure 5B](#)) with no evidence of statistical heterogeneity ($I^2=0.0\%$, $p=0.96$).

Proportion of patients categorised as sedentary or not physically active

Five studies reported the proportion of patients considered sedentary,²⁹ exercising $<4\text{hours}$ per week³² or undertaking no exercise,^{24 28 33} at 12 months (median, range 12–24 months) follow-up. There was a reduction in CR participants categorised as sedentary or not physically active (RR 0.76, 95% CI 0.61 to 0.95, $p=0.02$), with no evidence of statistical heterogeneity ($I^2=36\%$, $p=0.18$).

DISCUSSION

This systematic review of RCTs shows moderate evidence of an increase in PA with CR participation with 26% (38/145) of comparisons reporting a statistically significant result in favour of

CR compared with control. This pattern of results appear consistent regardless of whether studies assessed PA using subjective or objective methods, or the CR intervention was comprehensive or exercise only. Studies involving patients with HF appeared less likely to have positive results in favour of CR. There was an increased proportion of positive results with higher doses of CR suggesting that higher doses of exercise training may be more effective in improving PA levels. Similarly, results suggest that home-based interventions may be more effective in improving PA levels.

Meta-analyses showed that CR participation compared with control is associated with an increase in some PA outcomes: steps/day at short-term follow-up, energy expenditure (kcal/week) at short-term follow-up, proportion of patients categorised as physically active both at short-term and long-term follow-up and reduced proportion of patients categorised sedentary or not physically active at short-term follow-up. CR was not shown to have a significant impact on minutes/day spent sedentary or in light or moderate-vigorous PA at short-term follow-up.

It remains uncertain if the mean increase of 1423 steps/day that we observed with CR is clinically meaningful. In patients with chronic obstructive pulmonary disease undergoing rehabilitation, the minimal clinically important difference (MCID) was calculated to lie between 600 and 1100 steps/day and resulted in a reduction in hospital admissions.³⁴ However, we know of no published MCID for patients with CHD or HF.

We believe there are two potential reasons why we saw improvements in some outcomes, but not others. First, categorising continuous PA data to PA categories (eg, sedentary, light moderate or vigorous) may have resulted in a loss of sensitivity to change. Second, some studies may have been susceptible to measurement bias as they used subjective PA measures.

Comparison of findings to previous studies

Our results build on previous systematic reviews^{10 11} that found some evidence to indicate that CR positively impacts on PA in patients with CHD, but little evidence in long term and recommended CR programmes place more emphasis on improving the long-term PA levels of patients.¹⁰ Ter Hoeve *et al* concluded that centre-based CR was not sufficient to improve and maintain PA levels and suggested home-based CR programmes may be more successful; however, literature is limited in this area.¹¹ In accord with recent Cochrane systematic reviews of CR,^{9 10} the participating patients were relatively young (<60 years), predominantly male, with large differences in the programme location, duration, intensity, modality and length of follow-up.

Strengths and limitations

We believe this to be the first meta-analysis to assess the impact of CR on PA levels of patients with both CHD and HF. Strengths of this review include extensive literature searches, use of RCTs and inclusion of both subjective and objective PA assessment. Compared with the previous systematic reviews, we identified an additional 23 RCTs (2432 additional patients), 10 of which specifically involved patients with HF (655 patients).

However, this review has limitations. With the wide range of PA outcomes reported across the studies, at various follow-up time points, we were limited in the extent of meta-analysis we were able to complete. That only small numbers of studies were suitable for inclusion in the meta-analysis, limits our ability to draw firm conclusions from these pooled results. Vote counting was done to give a quantitative overview of the results. However, this method has limitations: (1) large and small studies carry the

Table 3 Vote counting—comparing centre-based CR to home-based CR and combined RCTs

Direction of result	Number of results		
	Centre-based CR intervention	Home-based CR intervention	Combined centre and home based or RCT included both
PA in CR same as control ($p>0.05$)	63 (77%)	22 (51%)	15 (75%)
PA in CR higher than control ($p\leq 0.05$)	15 (18%)	19 (44%)	4 (20%)
PA in control higher than CR ($p\leq 0.05$)	1 (1%)	0	1 (5%)
PA difference between CR and control not clear (no p value reported)	3 (4%)	2 (5%)	0
Total	82	43	20

CR, cardiac rehabilitation; PA, physical activity; RCT, randomised controlled trial.

Review

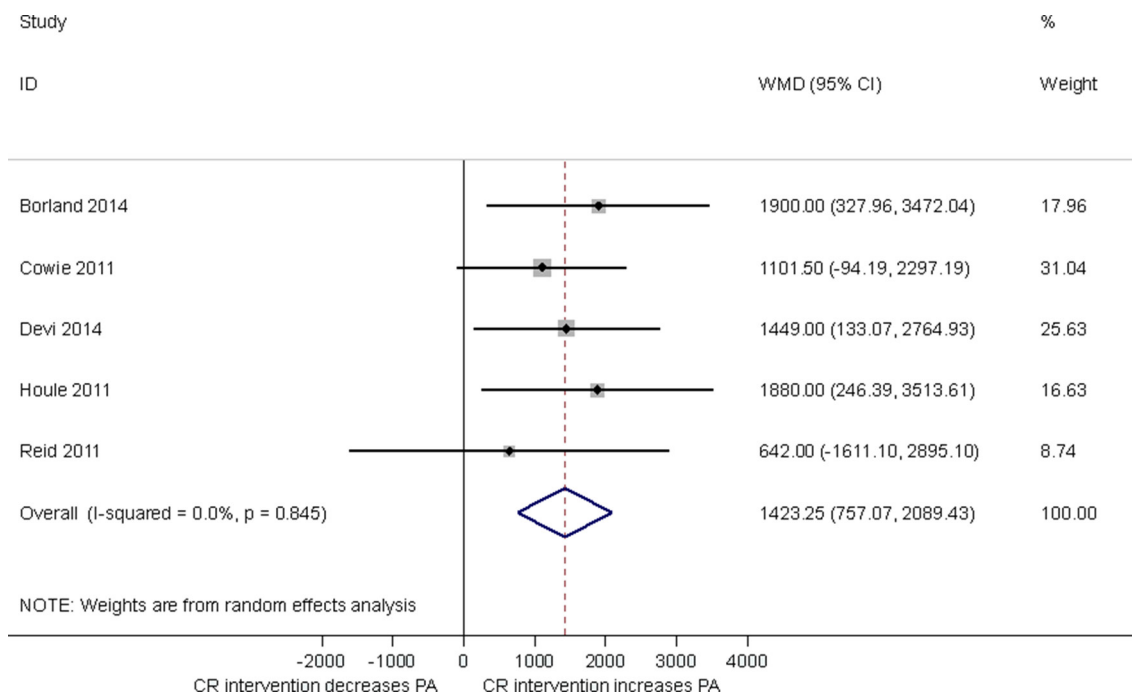


Figure 3 Impact of cardiac rehabilitation on mean steps/day at short-term follow-up (median 3 months, range 1.5–12 months). CR, cardiac rehabilitation, PA, physical activity; WMD, weighted mean difference.

same weight, (2) studies reporting multiple PA outcome results contribute more weight and (3) results from multiple outcomes within study may not be independent. Furthermore, judgements by the authors on levels of PA were not based on national recommendations, leading to uncertainty about the clinical meaningfulness of PA improvements.

Key issues raised in risk of bias assessments were insufficiently described randomisation and allocation concealment procedures, leading to difficulty rating the quality of the RCTs. Additionally, 65% of studies had unclear risk of bias with regard to blinding of outcome assessment. This is particularly important in PA measurement since awareness of being assessed may cause

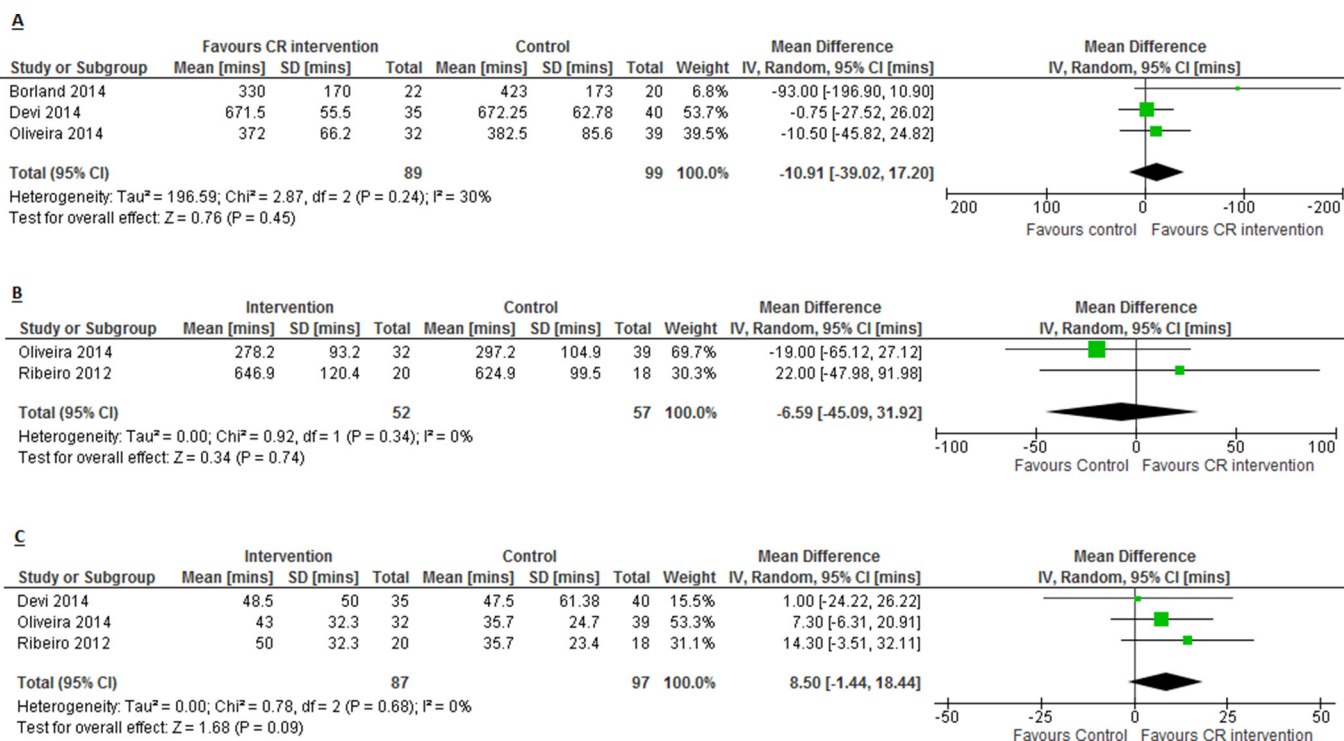


Figure 4 Impact of cardiac rehabilitation on (A) min/day spent sedentary or sitting; (B) min/day spent in light intensity PA and (C) min/day spent in moderate–vigorous PA. CR, cardiac rehabilitation.

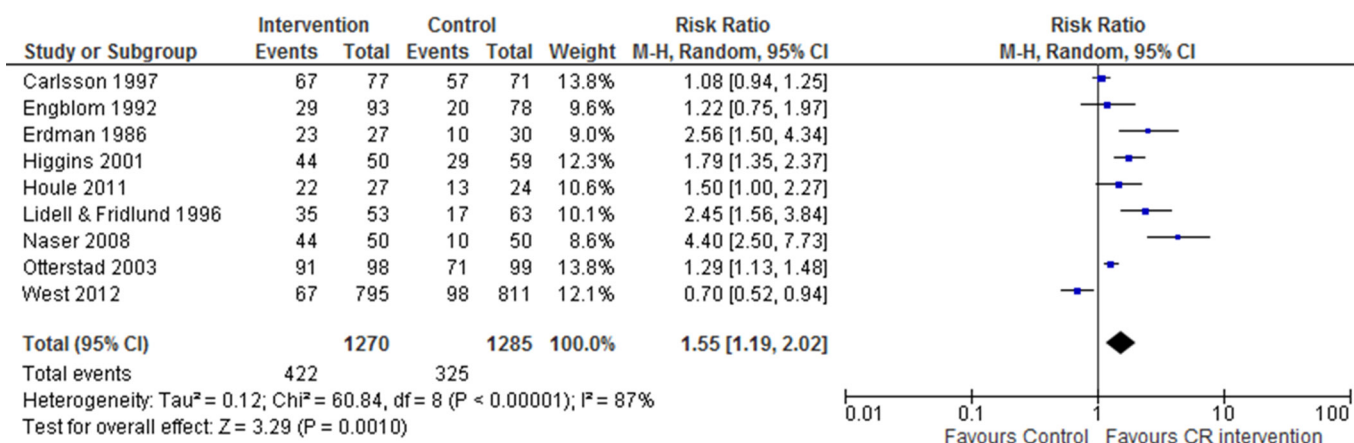
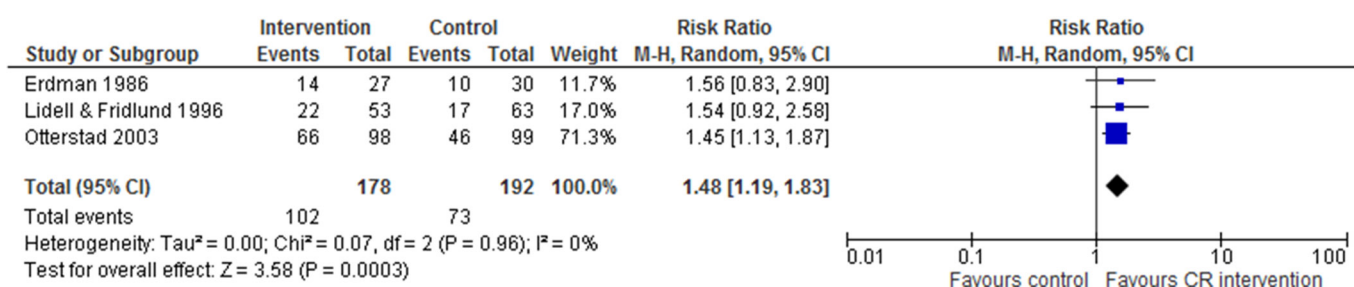
A - Proportion of patients categorised as physically active (short term follow up ≤12 months)**B - Proportion of patients categorised as physically active (long term follow up >12 months)**

Figure 5 Impact of cardiac rehabilitation on proportion of patients categorised as physically active measured at (A) short-term follow-up (≤12 months) and (B) long-term follow-up (>12 months). CR, cardiac rehabilitation.

both the intervention and control group patients to alter their behaviour and increase their PA on assessment days, potentially introducing bias to results.

There were numerous limitations in approaches studies took to assessing PA. Where questionnaires were used, few had been evidently validated for use in cardiac populations. Self-report commonly considered the frequency of exercise sessions undertaken as opposed to overall PA per se. Self-reported measures of PA are less valid and reliable than direct measures in patients with CR, generally overestimating PA and relying on patient recall.³⁵ Despite accelerometers being the most commonly used objective PA measurement method, a variety of devices were used, with sensors placed at different body sites, and a wide range of outcome metrics reported across studies, limiting the ability to meta-analyse these data. Additionally, data handling methods were poorly reported; no studies adequately explained the minimum wear time requirement for inclusion in data analysis or data reduction techniques. Where accelerometer thresholds were used to estimate intensity, they were derived from studies in young, healthy adults which may mean the PA level is underestimated in patients with cardiac disease.³⁶ Resting metabolic rate in patients with cardiac disease has been previously demonstrated to be significantly lower (23%–36%) than the typically utilised value of 3.5 mL/kg/min,³⁷ which may have implications in underestimating energy expenditure during higher intensity activities. Therefore, researchers should consider using thresholds specifically established for patients with cardiac disease.

There was inconsistency in statistical methods used across the studies. Baseline adjusted regression methods are recommended for analysis of RCTs.³⁸ However, only 35% reported a p value

that took the baseline PA level into account. Although many studies showed between group differences in fitness outcomes, 26% of results demonstrated a statistically significant difference in PA outcomes. This is likely because individual studies were often small and underpowered to detect small differences in PA. Only 13 (32%) of the included studies included formal sample size calculations and of these only 4 (31%) were based on PA outcomes.

Implications for clinical practice and future research

That our results showed no difference in PA outcomes in studies that employed comprehensive CR compared with exercise-only CR suggest that improvements in PA with CR are the result of exercise training rather than components of education and psychosocial interventions. Additionally, improvement in exercise capacity may not be directly related to increases in PA levels. CR programmes should consider supplementing their existing exercise-training intervention with interventions that specifically aim to increase PA level. For example, the ongoing PATHway I trial, where the basis of the CR intervention is PA promotion and the primary outcome is objectively measured PA level.³⁹

Further research is required to validate interventions that promote PA in cardiac populations. Furthermore, objective measurement of PA requires population-specific calibration studies to establish intensity thresholds. The use of inconsistent PA measures and units made formal pooling of data problematic. We therefore recommend that future studies use objective measures of PA such as accelerometers, be statistically powered to detect small differences in PA, use appropriate data handling

and analysis methods, and PA outcomes are reported in relation to national PA recommendations. Studies should assess PA outcomes over the long term.

CONCLUSIONS

This systematic review and meta-analysis provides moderate evidence of an increase in PA with CR participation compared with control. However, the included trials were at risk of bias, and the quality of PA assessment and reporting was relatively poor. It is unclear whether increases in PA with CR are clinically meaningful. Further high-quality trials are required to assess if CR leads to important improvements in PA, such as the UK recommended target of 150 min of moderate intensity PA per week, especially in long term.

Acknowledgements We would like to thank Catriona Organ, librarian at the Royal Cornwall Hospital Library, Knowledge Spa, Truro, and the PenCLARHC Evidence Synthesis Team at University of Exeter Medical School for their assistance throughout the process of this review. We also thank Dr Joe Mills (immediate past president of BACPR) for encouraging us to write this review and facilitating its submission.

Contributors GOD, HMD, RST and MH contributed to the conception, design, planning, conduct and reporting of the work described in this article. All authors contributed to the critical revision of the manuscript.

Funding This study was supported by a University of Exeter Postgraduate Studentship Grant.

Competing interests None declared.

Patient consent Not required.

Provenance and peer review Not commissioned; externally peer reviewed.

Open Access This is an Open Access article distributed in accordance with the Creative Commons Attribution Non Commercial (CC BY-NC 4.0) license, which permits others to distribute, remix, adapt, build upon this work non-commercially, and license their derivative works on different terms, provided the original work is properly cited and the use is non-commercial. See: <http://creativecommons.org/licenses/by-nc/4.0/>

© Article author(s) (or their employer(s) unless otherwise stated in the text of the article) 2018. All rights reserved. No commercial use is permitted unless otherwise expressly granted.

REFERENCES

- Caspersen CJ, Powell KE, Christenson GM. Physical activity, exercise, and physical fitness: definitions and distinctions for health-related research. *Public Health Rep* 1985;100:126–31.
- Chief Medical Officers. Start active, stay active. A report on physical activity for health from the four home countries. 2011 https://www.gov.uk/government/uploads/system/uploads/attachment_data/file/216370/dh_128210.pdf (accessed Oct 2017).
- O'Donovan G, Blazevich AJ, Boreham C, et al. The ABC of physical activity for health: a consensus statement from the British association of sport and exercise sciences. *J Sports Sci* 2010;28:573–91.
- British Association for Cardiovascular Prevention and Rehabilitation. The BACPR standards and core components for cardiovascular disease prevention and rehabilitation. 2017 http://www.bacpr.com/resources/BACPR_Standards_and_Core_Components_2017.pdf (accessed Oct 2017).
- Scottish Intercollegiate Guidelines Network. Cardiac rehabilitation. *A national clinical guideline* <http://www.sign.ac.uk/assets/sign150.pdf> (accessed October 2017).
- Anderson L, Oldridge N, Thompson DR, et al. Exercise-based cardiac rehabilitation for coronary heart disease. *Cochrane Database Syst Rev* 2016.
- Taylor RS, Sagar VA, Davies EJ, et al. Exercise-based rehabilitation for heart failure. *Cochrane Database Syst Rev* 2014;7.
- Dontje ML, van der Wal MH, Stolk RP, et al. Daily physical activity in stable heart failure patients. *J Cardiovasc Nurs* 2014;29:218–26.
- Yates BC, Pozehl B, Kupzyk K, et al. Are heart failure and coronary artery bypass surgery patients meeting physical activity guidelines? *Rehabilitation Nursing* 2015.
- Jolliffe J, Taylor R. Physical activity and cardiac rehabilitation: a critical review of the literature. *Coronary Health Care* 1998;2:179–86.
- ter Hoeve N, Huisstede BM, Stam HJ, et al. Does cardiac rehabilitation after an acute cardiac syndrome lead to changes in physical activity habits? Systematic review. *Phys Ther* 2015;95:167–79.
- Moher D, Liberati A, Tetzlaff J, et al. Preferred reporting items for systematic reviews and meta-analyses: the PRISMA statement. *BMJ* 2009;339:b2535.
- Higgins JP, Green S, The Cochrane Collaboration. *Cochrane handbook for systematic reviews of interventions version 5.1.0* 2011.
- Borland M, Rosenkvist A, Cider A. A group-based exercise program did not improve physical activity in patients with chronic heart failure and comorbidity: a randomized controlled trial. *J Rehabil Med* 2014;46:461–7.
- Houle J, Doyon O, Vadeboncoeur N, et al. Innovative program to increase physical activity following an acute coronary syndrome: randomized controlled trial. *Patient Educ Couns* 2011;85:e237–e244.
- Reid RD, Morrill LI, Beaton LJ, et al. Randomized trial of an internet-based computer-tailored expert system for physical activity in patients with heart disease. *Eur J Prev Cardiol* 2012;19:1357–64.
- Cowie A, Thow MK, Granat MH, et al. A comparison of home and hospital-based exercise training in heart failure: immediate and long-term effects upon physical activity level. *Eur J Cardiovasc Prev Rehabil* 2011;18:158–66.
- Devi R, Powell J, Singh S. A web-based program improves physical activity outcomes in a primary care angina population: randomized controlled trial. *J Med Internet Res* 2014;16:e186.
- Hambrecht R, Niebauer J, Marburger C, et al. Various intensities of leisure time physical activity in patients with coronary artery disease: effects on cardiorespiratory fitness and progression of coronary atherosclerotic lesions. *J Am Coll Cardiol* 1993;22:468–77.
- Heath GW, Maloney PM, Fure CW. Group exercise versus home exercise in coronary artery bypass graft patients: effects on physical activity habits. *J Cardiopulmonary Rehabil* 1987;7:190–5.
- Mueller L, Myers J, Kottman W, et al. Exercise capacity, physical activity patterns and outcomes six years after cardiac rehabilitation in patients with heart failure. *Clin Rehabil* 2007;21:923–31.
- Oliveira NL, Ribeiro F, Teixeira M, et al. Effect of 8-week exercise-based cardiac rehabilitation on cardiac autonomic function: A randomized controlled trial in myocardial infarction patients. *Am Heart J* 2014;167:753–61.
- Ribeiro F, Alves AJ, Teixeira M, Miranda F, et al. Exercise training increases interleukin-10 after an acute myocardial infarction: a randomised clinical trial. *Int J Sports Med* 2012;33:192–8.
- Engblom E, Hietanen EK, Hämäläinen H, et al. Exercise habits and physical performance during comprehensive rehabilitation after coronary artery bypass surgery. *Eur Heart J* 1992;13:1053–9.
- Hämäläinen H, Luurila OJ, Kallio V, et al. Long-term reduction in sudden deaths after a multifactorial intervention programme in patients with myocardial infarction: 10-year results of a controlled investigation. *Eur Heart J* 1989;10:55–62.
- Higgins HC, Hayes RL, McKenna KT. Rehabilitation outcomes following percutaneous coronary interventions (PCI). *Patient Educ Couns* 2001;43:219–30.
- West RR, Jones DA, Henderson AH. Rehabilitation after myocardial infarction trial (RAMIT): multi-centre randomised controlled trial of comprehensive cardiac rehabilitation in patients following acute myocardial infarction. *Heart* 2012;98:637–44.
- Otterstad JE. Vestfold Heartcare Study Group. Influence on lifestyle measures and five-year coronary risk by a comprehensive lifestyle intervention programme in patients with coronary heart disease. *Eur J Cardiovasc Prev Rehabil* 2003;10:429–37.
- Carlsson R, Lindberg G, Westin L, et al. Influence of coronary nursing management follow up on lifestyle after acute myocardial infarction. *Heart* 1997;77:256–9.
- Erdman RA, Duivenvoorden HJ, Verhage F, et al. Predictability of beneficial effects in cardiac rehabilitation: a randomized clinical trial of psychosocial variables. *J Cardiopulm Rehabil* 1986;6:206–13.
- Lidell E, Fridlund B. Long-term effects of a comprehensive rehabilitation programme after myocardial infarction. *Scand J Caring Sci* 1996;10:67–74.
- Zwisler AD, Soja AM, Rasmussen S, et al. Hospital-based comprehensive cardiac rehabilitation versus usual care among patients with congestive heart failure, ischemic heart disease, or high risk of ischemic heart disease: 12-month results of a randomized clinical trial. *Am Heart J* 2008;155:1106–13.
- Bengtsson K. Rehabilitation after myocardial infarction. A controlled study. *Scand J Rehabil Med* 1983;15:1–9.
- Demeyer H, Burtin C, Hornikx M, et al. The minimal important difference in physical activity in patients with COPD. *PLoS One* 2016;11:e0154587.
- Alharbi M, Bauman A, Neubeck L, et al. Measuring overall physical activity for cardiac rehabilitation participants: a review of the literature. *Heart Lung Circ* 2017;26:1008–25.
- Freedson PS, Melanson E, Sirard J. Calibration of the computer science and applications, Inc. accelerometer. *Med Sci Sports Exerc* 1998;30:777–81.
- Savage PD, Toth MJ, Ades PA. A re-examination of the metabolic equivalent concept in individuals with coronary heart disease. *J Cardiopulm Rehabil Prev* 2007;27:143–8.
- Egbewale BE, Lewis M, Sim J. Bias, precision and statistical power of analysis of covariance in the analysis of randomized trials with baseline imbalance: a simulation study. *BMC Med Res Methodol* 2014;14:49.
- Claes J, Buys R, Woods C, et al. PATHway I: design and rationale for the investigation of the feasibility, clinical effectiveness and cost-effectiveness of a technology-enabled cardiac rehabilitation platform. *BMJ Open* 2017;7:e016781.

- 40 Astengo M, Dahl A, Karlsson T, *et al.* Physical training after percutaneous coronary intervention in patients with stable angina: effects on working capacity, metabolism, and markers of inflammation. *Eur J Cardiovasc Prev Rehabil* 2010;17:349–54.
- 41 Bertie J, King A, Reed N, *et al.* Benefits and weaknesses of a cardiac rehabilitation programme. *J R Coll Physicians Lond* 1992;26:147–51.
- 42 DeBusk RF, Houston N, Haskell W, *et al.* Exercise training soon after myocardial infarction. *Am J Cardiol* 1979;44:1223–9.
- 43 Gottlieb SS, Fisher ML, Freudenberger R, *et al.* Effects of exercise training on peak performance and quality of life in congestive heart failure patients. *J Card Fail* 1999;5:188–94.
- 44 Gulanick M. Is phase 2 cardiac rehabilitation necessary for early recovery of patients with cardiac disease? A randomized, controlled study. *Heart Lung* 1991;20:9–15.
- 45 Maddison R, Pfaeffli L, Whittaker R, *et al.* A mobile phone intervention increases physical activity in people with cardiovascular disease: Results from the HEART randomized controlled trial. *Eur J Prev Cardiol* 2015;22:701–9.
- 46 Naser A, Jafar S, Kumar GV, *et al.* Cardiac risk factor changes through an intensive multifactorial life style modification program in CHD patients: results from a two year follow up. *J Biol Sci* 2008;8:248–57.
- 47 Oldenburg B, Martin A, Greenwood J, *et al.* A controlled trial of a behavioral and educational intervention following coronary artery bypass surgery. *J Cardiopulm Rehabil* 1995;15:39–46.
- 48 Ornish D, Scherwitz LW, Billings JH, *et al.* Intensive lifestyle changes for reversal of coronary heart disease. *JAMA* 1998;280:2001–7.
- 49 Senden PJ, Sabelis LW, Zonderland ML, *et al.* The effect of physical training on workload, upper leg muscle function and muscle areas in patients with chronic heart failure. *Int J Cardiol* 2005;100:293–300.
- 50 Sivarajan ES, Bruce RA, Lindskog BD, *et al.* Treadmill test responses to an early exercise program after myocardial infarction: a randomized study. *Circulation* 1982;65:1420–8.
- 51 Ståhle A, Nordlander R, Rydén L, *et al.* Effects of organized aerobic group training in elderly patients discharged after an acute coronary syndrome. A randomized controlled study. *Scand J Rehabil Med* 1999;31:101–7.
- 52 Todd IC, Ballantyne D. Effect of exercise training on the total ischaemic burden: an assessment by 24 hour ambulatory electrocardiographic monitoring. *Br Heart J* 1992;68:560–6.
- 53 Toobert DJ, Glasgow RE, Nettekoven LA, *et al.* Behavioral and psychosocial effects of intensive lifestyle management for women with coronary heart disease. *Patient Educ Couns* 1998;35:177–88.
- 54 van den Berg-Emons R, Balk A, Bussmann H, *et al.* Does aerobic training lead to a more active lifestyle and improved quality of life in patients with chronic heart failure? *Eur J Heart Fail* 2004;6:95–100.
- 55 Wall HK, Ballard J, Troped P, *et al.* Impact of home-based, supervised exercise on congestive heart failure. *Int J Cardiol* 2010;145:267–70.
- 56 Wang W, Jiang Y, He HG, *et al.* A randomised controlled trial on the effectiveness of a home-based self-management programme for community-dwelling patients with myocardial infarction. *Eur J Cardiovasc Nurs* 2016;15:398–408.
- 57 Willenheimer R, Rydberg E, Cline C, *et al.* Effects on quality of life, symptoms and daily activity 6 months after termination of an exercise training programme in heart failure patients. *Int J Cardiol* 2001;77:25–31.
- 58 Witham MD, Argo IS, Johnston DW, *et al.* Long-term follow-up of very old heart failure patients enrolled in a trial of exercise training. *Am J Geriatr Cardiol* 2007;16:243–8.
- 59 Witham MD, Fulton RL, Greig CA, *et al.* Efficacy and cost of an exercise program for functionally impaired older patients with heart failure: a randomized controlled trial. *Circ Heart Fail* 2012;5:209–16.

Heart

Cardiac rehabilitation and physical activity: systematic review and meta-analysis

Grace Olivia Dibben, Hasnain M Dalal, Rod S Taylor, Patrick Doherty, Lars Hermann Tang and Melvyn Hillsdon

Heart published online April 13, 2018

Updated information and services can be found at:

<http://heart.bmj.com/content/early/2018/04/13/heartjnl-2017-312832>

These include:

References

This article cites 52 articles, 9 of which you can access for free at: <http://heart.bmj.com/content/early/2018/04/13/heartjnl-2017-312832#ref-list-1>

Open Access

This is an Open Access article distributed in accordance with the Creative Commons Attribution Non Commercial (CC BY-NC 4.0) license, which permits others to distribute, remix, adapt, build upon this work non-commercially, and license their derivative works on different terms, provided the original work is properly cited and the use is non-commercial. See: <http://creativecommons.org/licenses/by-nc/4.0/>

Email alerting service

Receive free email alerts when new articles cite this article. Sign up in the box at the top right corner of the online article.

Topic Collections

Articles on similar topics can be found in the following collections

[Open access](#) (288)

Notes

To request permissions go to:

<http://group.bmj.com/group/rights-licensing/permissions>

To order reprints go to:

<http://journals.bmj.com/cgi/reprintform>

To subscribe to BMJ go to:

<http://group.bmj.com/subscribe/>