



This is a repository copy of *Estimating an individual's probability of revision surgery after knee replacement : a comparison of modeling approaches using a national dataset.*

White Rose Research Online URL for this paper:
<http://eprints.whiterose.ac.uk/132150/>

Version: Accepted Version

Article:

Aram, P., Trela-Larsen, L., Sayers, A. et al. (5 more authors) (2018) Estimating an individual's probability of revision surgery after knee replacement : a comparison of modeling approaches using a national dataset. *American Journal of Epidemiology*, 187 (10). pp. 2252-2262. ISSN 0002-9262

<https://doi.org/10.1093/aje/kwy121>

Reuse

This article is distributed under the terms of the Creative Commons Attribution (CC BY) licence. This licence allows you to distribute, remix, tweak, and build upon the work, even commercially, as long as you credit the authors for the original work. More information and the full terms of the licence here:
<https://creativecommons.org/licenses/>

Takedown

If you consider content in White Rose Research Online to be in breach of UK law, please notify us by emailing eprints@whiterose.ac.uk including the URL of the record and the reason for the withdrawal request.



eprints@whiterose.ac.uk
<https://eprints.whiterose.ac.uk/>

**Estimating an Individual's Probability of Revision Surgery After Knee Replacement: A
Comparison of Modeling Approaches Using a National Dataset**

Parham Aram, Lea Trela-Larsen, Adrian Sayers, Andrew F. Hills, Ashley W. Blom, Eugene V. McCloskey, Visakan Kadiramanathan, and Jeremy M. Wilkinson

Correspondence to Dr. Jeremy M. Wilkinson, Centre for Integrated Research in Musculoskeletal Ageing, Mellanby Centre for Bone Research, University of Sheffield, Sheffield, UK (phone: 0114 215 9029; fax: 0114 2618775; e-mail: j.m.wilkinson@sheffield.ac.uk).

Author affiliations: Department of Automatic Control and Systems Engineering, University of Sheffield, Sheffield, UK (Parham Aram, Andrew F. Hills, and Visakan Kadiramanathan); School of Clinical Sciences, University of Bristol, Bristol, UK (Lea Trela-Larsen, Adrian Sayers, and Ashley W. Blom); School of Social and Community Medicine, University of Bristol, Bristol, UK (Adrian Sayers); Academic Unit of Bone Metabolism, University of Sheffield, Sheffield, UK (Eugene V. McCloskey); and Centre for Integrated Research in Musculoskeletal Ageing, Mellanby Centre for Bone Research, University of Sheffield, Sheffield, UK (Eugene V. McCloskey, and Jeremy M. Wilkinson).

© The Author(s) 2018. Published by Oxford University Press on behalf of the Johns Hopkins Bloomberg School of Public Health. This is an Open Access article distributed under the terms of the Creative Commons Attribution License (<http://creativecommons.org/licenses/by/4.0>), which permits unrestricted reuse, distribution, and reproduction in any medium, provided the original work is properly cited.

This work was supported by Arthritis Research UK (grant 20894).

Conflicts of interest: none declared.

Running head: Estimating Reoperation Risk After Knee Replacement

ABSTRACT

Tools that provide personalized risk prediction of the outcomes after surgical procedures help patients to make preference-based decisions amongst the available treatment options.

However, it is unclear which modeling approach provides the most accurate risk estimation.

We constructed and compared several parametric and non-parametric models for predicting prosthesis survivorship after knee replacement surgery for osteoarthritis. We used 430,455 patient-procedure episodes between April 2003 and September 2015 from the National Joint Registry for England, Wales, Northern Ireland and the Isle of Man. The flexible parametric survival and random survival forest models most accurately captured the observed probability of remaining event-free. The concordance index for the flexible parametric model was the highest (0.705; 95% confidence interval: 0.702, 0.707) for total knee replacement, 0.639 (95% confidence interval: 0.634, 0.643) for unicondylar knee replacement and 0.589 (95% confidence interval: 0.586, 0.592) for patellofemoral replacement. The observed-to-predicted ratios for both the flexible parametric and the random survival forest approaches indicated that models tended to underestimate the risks for most risk groups. Our results show that the flexible parametric model has a better overall performance compared to other tested parametric methods, and better discrimination compared to the random survival forest approach.

Keywords: knee replacement, revision surgery, time-to-event analysis, random survival forest, flexible parametric survival model, parametric survival model, calibration, discrimination

Abbreviations: AIC, Akaike Information Criterion; BMI, Body Mass Index; Concordance Index (C index); FPM, Flexible Parametric Model; NJR, National Joint Registry for England, Wales, Northern Ireland and the Isle of Man; PFR, Patellofemoral Replacement; RSF, Random Survival Forest; TKR, Total Knee Replacement; UKR, Unicodylar Knee Replacement.

Shared decision-making between a patient and their doctor is fundamental to good clinical practice (1, 2), and improves patient knowledge about medical treatments and their associated benefits and risks (3). Decision aids fill the gap between population-level data and its application to the patients' individual circumstances to better inform patients making choices about healthcare interventions (4-6). The use of decision aids in controlled settings enhances patient participation in the process, improves their knowledge and satisfaction, and reduces decisional conflict (1, 7-9). Patient engagement through shared decision-making reduces inequalities in health between patient groups and benefits healthcare economies through improved clinical outcomes and better resource utilization (10).

Osteoarthritis is the most prevalent musculoskeletal disease and is a leading cause of chronic pain and disability worldwide (11-13). In the UK alone, nine million people currently seek treatment for osteoarthritis with a total indirect cost to the economy of £14.8 billion per annum (14, 15). Each year almost 100,000 individuals undergo knee replacement surgery in England and Wales (16), with a direct cost of £546 million for the inpatient stay alone (14).

The National Joint Registry for England, Wales, Northern Ireland and the Isle of Man (NJR) (17) was established in 2003 to collect audit data on all total hip and knee replacement surgery in these regions, for which it has a completeness rate of 97% (18).

Evidence-based decision-making in the setting of joint replacement surgery, where such decisions are preference-sensitive (6, 19), enable the patient to arrive at an informed choice amongst several alternative treatments (5). The development of a personalized decision aid in this setting requires the generation of a time-to-event model that incorporates individual characteristics, prosthesis choice and other fixed and modifiable risk factors. The choice of such models is potentially large, and includes semi-parametric Cox models, parametric survival models, flexible parametric survival models (FPM), and random survival forests (RSF). These models can be adapted to provide an estimate of the absolute risk of the outcome of interest for each individual. We used the NJR dataset to assess the performance of these methods for individual prediction of the risk of prosthesis revision over an 8-year interval after knee replacement.

MATERIALS AND METHODS

Study population

Our base dataset was 787,106 knee replacements carried out in England and Wales between April 2003 and September 2015. We excluded procedures where osteoarthritis was not the only indication for surgery (29,918), patients with a body mass index (BMI) of below 15 or above 55 kg/m² (2,485), patients aged younger than 30 or older than 100 years (262), and those with an American Society of Anesthesiologists grade 4 or 5 (2,782) indicating severe comorbidities. We conducted a complete case analysis and excluded procedures with missing data on any of the study covariates, namely: BMI (316,828 missing), knee replacement procedures (10,648 missing) and chemical and mechanical thromboprophylaxis (1,589 missing). This resulted in 430,455 cases with complete information.

Separate models were constructed for each of the procedures being considered: total knee replacement (TKR), unicondylar knee replacement (UKR), or patellofemoral replacement

(PFR), due to differences in survival performance characteristics of the different prosthesis categories (20).

Outcome and covariates

The outcome of interest in our time-to-event models was time to first revision surgery. We linked primary knee replacement procedures to revision procedures recorded in the NJR using a unique patient identifier and side (left or right knee). Patient death with a non-revised prosthesis was considered as censored. Analysis covariates included age, BMI, sex, American Society of Anesthesiologists grade, chemical and mechanical thromboprophylaxis, and operation type (unilateral/ same-day bilateral) based on their known association with prosthesis revision (21-23). The revision of each side of both simultaneous and sequential bilateral procedures was considered independently, with separate time-to-events for each side. Sequential bilateral procedures performed on different dates were considered as independent unilateral operations. Previous research has shown that ignoring the potential dependence between procedures in the same patient does not lead to bias (24).

Modeling approaches

In standard parametric methods a distribution for time-to-event data is assumed where the unknown parameters are inferred using the maximum likelihood estimation. Here, we considered exponential, Weibull and log-logistic distributions. The exponential distribution is defined by a single scale parameter and assumes a constant hazard over time. The Weibull distribution is a two-parameter distribution with scale and shape parameters producing increasing (shape parameter > 1) and decreasing (shape parameter < 1) monotonic hazard

functions (25). The Weibull and exponential models are proportional hazards models. The two-parameter log-logistic model is a proportional odds model that can produce a decreasing monotonic (shape parameter ≤ 1) or unimodal hazard function (shape parameter > 1) depending on the shape parameter (26).

If the estimation of the time-to-event distribution itself is not required the semi-parametric Cox model can be used to estimate the effect of covariates on the baseline hazard function. The Cox model assumes proportional hazards and can be fitted by maximizing a partial likelihood function (27, 28).

The standard parametric models explained above place specific constraints on the shape of the hazard function. The FPM offers an alternative approach such that restrictions on the shape of the hazard function are relaxed (29). In this approach the baseline cumulative hazard or odds function is modeled as a flexible function of log time using restricted cubic splines. Restricted cubic splines are piecewise third-order polynomials that are smoothly joined together at break points or knots (30). The complexity of the baseline distribution is determined by the number and position of knots in the spline function. Optimal placement of knots is not essential, thus a simple centile-based approach can be adopted (30). The model is fitted with either a proportional hazards or odds assumption using maximum likelihood estimation.

The RSF algorithm (31) is a machine learning tool for modeling time-to-event data and is an extension of random forest classifiers and regressors introduced by Breiman (32). The RSF is a distribution-free method and its tree-based architecture can take possible interaction effects into account through hierarchical splitting. The RSF approach also accounts for nonlinearity by dichotomizing continuous variables at split points (31). In RSF B bootstraps are drawn from the original dataset and each bootstrap sample is used as a root node to grow a survival tree. A subset of covariates is randomly selected at each node of the tree. The node is then split into two left and right daughter nodes using a covariate that gives the maximum survival

difference between daughter nodes. This can be done through a measure of separation such as the log-rank test (33-35). For continuous covariates splits over all possible values are considered and an optimal cut-off is then chosen. The tree is grown until each terminal node contains at least a pre-specified number of unique cases. For every tree the cumulative hazard function for each terminal node can be calculated using the Nelson-Aalen estimator (36, 37). This gives a series of estimators that correspond to different terminal nodes that define the cumulative hazard function for the tree. The estimated tree's hazard function for an individual is the Nelson-Aalen estimator for the individual's terminal node and an average cumulative hazard function is calculated across all trees in the random forest. It is recommended that between 64 and 128 trees are used to achieve a balance between model performance, processing time and memory usage (38).

Overall model performance

We used the Akaike information criterion (AIC), a measure that compromises between goodness-of-fit and model complexity (39), to provide an overall measure of the performance of the parametric models. We also compared model predictions by averaging the time-to-event estimates for individuals at each time point and comparing to the population-based estimation (Kaplan-Meier).

Model validation

We applied repeated m-fold cross-validation to measure the performance of candidate models overall predictive value, discrimination ability and calibration (40). In m-fold cross-validation, the dataset is randomly assigned into m partitions of approximately equal size. The model is then constructed m times using m-1 of the partitions and tested on the remaining part of the data. The m test results are then averaged to compute an overall performance measure.

This ensures that all available data is used for training and testing the models. In repeated cross-validation the above procedure is performed several times. This reduces the variation of the m-fold cross-validation due to the random partitioning (41) and also allows the computation of confidence intervals for performance measures.

Overall validation performance. We evaluated the overall performance of models using the time-dependent Brier score, a commonly used tool in clinical outcomes analysis (42). The Brier score is a proper score function that evaluates the accuracy of probabilistic forecasts, and is calculated as the weighted average of squared distances between the observed outcome and predicted probability of that outcome at fixed time points (43). The weights are introduced to incorporate information from censored data and calculated using a model for either marginal or conditional censoring distribution. Time-dependent Brier scores can be integrated over time to provide a summary measure of overall performance. The nearer the Brier score is to zero for a set of predictions, the better the predictions match the observed outcomes.

Discrimination. We evaluated the discrimination capability of our models using an extension of Harrell's concordance index (C index) (44). The Harrell's C index is the proportion of pairs of subjects in which the one with the shorter time-to-event is associated with a higher predicted risk. This ignores pairs where the shorter time-to-event are censored to produce a result that depends on the censoring distribution. This is addressed by introducing a weighted C index, where the weights are similar to that of the Brier score (45).

Calibration. The models were further validated using a calibration process. Calibration is used to test the agreement between the predicted risks and the observed risks for different risk groups. These risk groups can be formed by dividing the predicted risk into quantiles. The observed risk for each group can be then computed using Kaplan-Meier method within that risk group (46).

Statistical analysis

We implemented different time-to-event models for each of the TKR, UKR and PFR procedures with the same set of covariates. We performed a complete case analysis assuming that data were missing at random, and only used cases with complete data on the covariates of interest. In parametric models a linear combination of the covariate vector is used to form the risk score. We also investigated non-linear associations of age and BMI with the outcome using first-degree and second-degree fractional polynomials (47). The number of unknown parameters in the baseline hazard function depends on the chosen model: one for the exponential model and two for Weibull and log-logistic models. For the FPMs we used AIC values as guidance for selection of the scale, proportional hazards or odds, and the number of knots as proposed by Royston and Parmar (29). In the RSF approach each random forest was computed using 100 bootstrap samples and the log-rank splitting rule.

The parametric models, estimated by maximum likelihood, were compared using AIC values. We also compared average (over individuals) prediction of each model with Kaplan-Meier estimates.

We then selected the models which could capture the overall survival pattern and further evaluated them using 50 repeats of five-fold cross-validation by comparing the Brier score, C index and calibration plot. We also performed our evaluation using 50 repeats of stratified five-fold cross-validation (48) where each fold contains the same proportion of revised and unrevised cases as in the original data.

The statistical analyses were carried out using R (randomForestSRC (49), survival (50, 51), flexsurv (52) and pec (53) packages).

RESULTS

Baseline characteristics of the complete dataset are given in Table 1.

For the FPMs we used proportional hazards scale with three interior knots for TKR and UKR models, and one interior knot for the PFR model. For TKR and UKR models the internal knots are placed at quartiles of the log uncensored survival times which results in five parameters in the baseline hazard function. For the PFR model the internal knot is placed at the median of the log uncensored survival times, giving three parameters in the baseline hazard function. Partial dependence analysis based on predictions from RSF (54) suggested non-linear associations between age and BMI and the outcome. We further analyze these associations with the FPM using fractional polynomial fitting (47). The results are shown in Web Table 1 where only powers with the largest deviance differences are reported. The results show that the reduction in deviance is not significant (P value of 5%) compared to the case where untransformed variables were used.

In RSF age and BMI were always selected for splits but other results for other variables were less stable. Mechanical prophylaxis, chemical prophylaxis and American Society of Anesthesiologists grade were moderately selected for splitting nodes, while gender and operation type were selected in a small fraction of the resamples.

The three parametric proportional-hazards models, log-logistic model and the semi-parametric Cox model for TKR are presented in Table 2 (UKR and PFR are shown in Web Table 2 and Web Table 3). The hazard ratios from the parametric proportional-hazards models were in close agreement to the Cox semi-parametric model. Note, the hazard ratio estimates of the FPM approach are closer to that of the Cox model compared to other proportional-hazards models. This is expected as the Cox model and the FPM should give unbiased hazard ratios whereas the hazard ratios conditional on a specific parametric model could be biased if the distribution is mis-specified. The odds ratios of the log-logistic model also showed a consistent behavior with respect to hazard ratios.

Overall performance

The AIC values, degrees of freedom and deviances (twice the negative likelihood) for the parametric models are shown in Table 3, where the FPM is preferred (lowest value) by the AIC. The RSF is not included in Table 2 and Table 3 as it is a non-parametric approach and is not fitted via the maximum likelihood algorithm and hence, AIC cannot be calculated. The averaged predicted survival curves over all individuals along with the observed (Kaplan-Meier) curve over time are plotted in Figure 1. The results show that the FPM and the RSF method capture the observed probabilities of remaining event-free accurately. The averaged hazard curves for the parametric models are also given in Figure 2, showing that the FPM can capture the increase and decrease of the hazard rate in the early and the later stages after primary surgery. This may explain its lower AIC values compared to the other parametric models. Figure 1 also suggests that there is insufficient information after year eight, thus only data up to this timepoint was used in subsequent analyses.

Repeated m-fold cross-validation

Only the FPM and RSF approach were considered for further comparison given their performance in the previous analysis. The integrated Brier score of the FPM and the RSF at 5 and 8 years are shown in Table 4. FPM and RSF yielded almost identical integrated Brier scores.

The C index of the FPM and the RSF at 8 years are presented in Table 5. The FPM model has a higher C index across all procedures, with the greatest contrast versus the RSF models being for TKR, followed by UKR.

Calibration was assessed by dividing the data into deciles of predicted risk of experiencing prosthesis revision within eight years. Calibration plots were then constructed (Figure 3) to

compare observed and average predicted risks for each decile. The absolute probabilities of prosthesis revision along with observed-to-predicted ratios of each decile for different models are also presented in Table 6.

The observed-to-predicted ratios indicate that the models tended to underestimate the risk in majority of cases. This underestimation may suggest that additional factors associated with revision are absent from the dataset. However, the observation that RSF both underestimates the risks in the low-risk groups and overestimates the risk in the highest risk decile suggests an over-fitting bias despite the ensemble averaging over all trees.

We present additional analyses using 50 repeats of stratified five-fold cross-validation in Web Table 4 and Web Table 5 where the results are similar to those in this section.

DISCUSSION

Here we presented a comparative evaluation of alternative survivorship models for knee replacement using the world's largest knee replacement clinical dataset. A variety of performance metrics were used to evaluate the generated models. The flexible parametric survival model outperformed other methods although its predictive ability was, at best, modest. The FPM and RSF gave identical integrated Brier scores, however, FPM had a higher C index. The observed-to-predicted ratios indicated that both models tended to underestimate the risks in majority of risk groups.

Brier scores close to zero indicate that models are able to calculate underlying risks by usefully extracting information from data. The C index uses individual predicted probabilities to distinguish unrevised from revised cases and our results of C index show that the models are capable of providing meaningful individual predictions, with a range from 0.59 to 0.71 depending on the model chosen.

The main disadvantage of parametric methods is that the assumed underlying distribution may be misspecified. The FPM incorporates a parametric distribution with flexible complexity to minimize the problem of model misspecification. However, there is no theoretical basis for the number and locations of the knots for the estimation of the baseline scale (30). Other popular flexible methods include piecewise exponential models (55), Bayesian survival models (56) and alternative spline based approaches (57). The RSF algorithm does not make any modeling assumptions and can handle non-linear effects and interactions. However, categorization using data-dependent splits gives a sub-optimal representation of a continuous variable (58), and the optimal setting of tuning parameters such as the number of trees, the splitting rule and the number of randomly selected variables for each node split may also represent challenges with this method. Alternative machine learning techniques in modeling time-to-event data are Survival-SVM (59) and other ensemble schemes such as boosting methods (60).

We carried out a complete case analysis assuming that data were missing at random and thus only used patients with complete data on the covariates of interest. Approximately 41.8% of data were excluded, mostly due to missing BMI data (40.2%). We consider that this is unlikely to affect the results of our comparative study, but could be addressed using multiple imputation techniques (61, 62). However, results from previous studies using imputed BMI have produced almost identical results to selective complete case analysis (23). The constructed models do not consider the competing risk of death, thus possibly biasing estimates of the prosthesis revision probability. These models can be further extended to accommodate competing risks in the calculation of the absolute risk for each individual (63, 64). Here we assumed a proportional-hazards spline model where time-dependent effects were not considered. This may also have caused bias in the risk estimates (65) of prosthesis revision. The flexible model can be further extended for possible improvement in fit by

adding interactions between covariates and the effect of time (29). Finally, an external validation to assess the generalizability and transportability of the model among different populations is required (66).

We created different algorithms to model time-to-event for the three knee replacement procedures as the demographic characteristics of the patient populations undergoing each, whilst overlapping, are distinct and our aim was to model individual time-to-event estimates based on real-world data. However, the observed differences in revision events between the procedure types raises the separate question of whether this differential revision rate is a function of the procedure, the prosthesis, the patient, or a combination of these. One approach to model this would be to select random datasets from the overlapping variable characteristics within the cohorts and to estimate a joint model with indicator variables for the different procedures. An alternate modeling approach such as propensity score matching might also be employed. However, with both approaches the residual challenge of unobserved confounding would remain (67).

Our findings indicate that predictive algorithms based upon the largest current knee replacement and surgical outcomes dataset have a modest ability to predict individual survival performance. Further variables not captured within routinely collected clinical audit datasets, such as time between prosthesis insertion and diagnosis of failure rather than time to revision surgery, and the development of novel algorithm methodologies may enhance predictive ability in the future. However, use of current data-driven point estimates of prosthesis performance despite modest discriminatory ability may still be sufficient to help inform preference-based decision-making, although clinical trials of their implementation will be required to confirm their utility.

ACKNOWLEDGMENT

Author affiliations: Department of Automatic Control and Systems Engineering, University of Sheffield, Sheffield, UK (Parham Aram, Andrew F. Hills, and Visakan Kadiramanathan); School of Clinical Sciences, University of Bristol, Bristol, UK (Lea Trela-Larsen, Adrian Sayers, and Ashley W. Blom); School of Social and Community Medicine, University of Bristol, Bristol, UK (Adrian Sayers); Academic Unit of Bone Metabolism, University of Sheffield, Sheffield, UK (Eugene V. McCloskey); and Centre for Integrated Research in Musculoskeletal Ageing, Mellanby Centre for Bone Research, University of Sheffield, Sheffield, UK (Eugene V. McCloskey, and Jeremy M. Wilkinson).

This work was supported by Arthritis Research UK (grant 20894).

We thank the patients and staff of all the hospitals who have contributed data to the National Joint Registry. We are grateful to the Healthcare Quality Improvement Partnership (HQIP), the National Joint Registry Steering Committee (NJRSC), and staff at the NJR Centre for facilitating this work. The views expressed represent those of the authors and do not necessarily reflect those of the NJRSC or HQIP who do not vouch for how the information is presented.

Conflicts of interest: none declared.

REFERENCES

1. Molenaar S, Sprangers MA, Postma-Schuit FC, et al. Feasibility and effects of decision aids. *Med Decis Making* 2000;20(1):112-127.
2. Coulter A. Paternalism or partnership? Patients have grown up-and there's no going back. *BMJ* 1999;319(7212):719-720.
3. Kassirer JP. Incorporating patients' preferences into medical decisions. *N Engl J Med* 1994;330(26):1895-1896.

4. Hawker GA, Wright JG, Coyte PC, et al. Differences between men and women in the rate of use of hip and knee arthroplasty. *N Engl J Med* 2000;342(14):1016-1022.
5. Hawker GA, Wright JG, Badley EM, et al. Perceptions of, and willingness to consider, total joint arthroplasty in a population-based cohort of individuals with disabling hip and knee arthritis. *Arthritis Rheum* 2004;51(4):635-641.
6. Clark JP, Hudak PL, Hawker GA, et al. The moving target: a qualitative study of elderly patients' decision-making regarding total joint replacement surgery. *J Bone Joint Surg Am* 2004;86-A(7):1366-1374.
7. Estabrooks C, Goel V, Thiel E, et al. Decision aids: are they worth it? A systematic review. *J Health Serv Res Policy* 2001;6(3):170-182.
8. O'Connor AM, Bennett CL, Stacey D, et al. Decision aids for people facing health treatment or screening decisions. *The Cochrane database of systematic reviews* 2009(3):CD001431.
9. Abu Al-Rub Z, Hussaini M, Gerrand CH. What do patients know about their joint replacement implants? *Scott Med J* 2014;59(3):158-161.
10. Tugwell P, O'Connor A, Andersson N, et al. Reduction of inequalities in health: assessing evidence-based tools. *International journal for equity in health* 2006;5:11.
11. Vos T, Flaxman AD, Naghavi M, et al. Years lived with disability (YLDs) for 1160 sequelae of 289 diseases and injuries 1990-2010: a systematic analysis for the Global Burden of Disease Study 2010. *Lancet* 2013;380(9859):2163-2196.
12. Murray CJ, Vos T, Lozano R, et al. Disability-adjusted life years (DALYs) for 291 diseases and injuries in 21 regions, 1990-2010: a systematic analysis for the Global Burden of Disease Study 2010. *Lancet* 2013;380(9859):2197-2223.

13. Cross M, Smith E, Hoy D, et al. The global burden of hip and knee osteoarthritis: estimates from the global burden of disease 2010 study. *Ann Rheum Dis* 2014;73(7):1323-1330.
14. NHS England Programme Budgeting Data. (<https://www.england.nhs.uk/resources/resources-for-ccgs/prog-budgeting/>). (Accessed September 1 2017).
15. Hiligsmann M, Cooper C, Arden N, et al. Health economics in the field of osteoarthritis: an expert's consensus paper from the European Society for Clinical and Economic Aspects of Osteoporosis and Osteoarthritis (ESCEO). *Semin Arthritis Rheum* 2013;43(3):303-313.
16. National Joint Registry 12th Annual Report. ([http://www.njrcentre.org.uk/njrcentre/Portals/0/Documents/England/Reports/12th annual report/NJR Online Annual Report 2015.pdf](http://www.njrcentre.org.uk/njrcentre/Portals/0/Documents/England/Reports/12th%20annual%20report/NJR%20Online%20Annual%20Report%202015.pdf)). (Accessed May 25 2018).
17. The National Joint Registry for England, Wales, Northern Ireland and the Isle of Man (<http://www-new.njrcentre.org.uk/njrcentre/Home/tabid/36/Default.aspx>). (Accessed September 1 2017).
18. Annual Progress: Data completeness and quality. Data completeness and quality. (<http://www.njrreports.org.uk/Data-Completeness-and-quality>). (Accessed September 1 2017).
19. Karlson EW, Daltroy LH, Liang MH, et al. Gender differences in patient preferences may underlie differential utilization of elective surgery. *Am J Med* 1997;102(6):524-530.

20. Liddle AD, Judge A, Pandit H, et al. Adverse outcomes after total and unicompartmental knee replacement in 101 330 matched patients: a study of data from the National Joint Registry for England and Wales. *Lancet* 2014;384(9952):1437-1445.
21. Liddle AD, Judge A, Pandit H, et al. Adverse outcomes after total and unicompartmental knee replacement in 101,330 matched patients: a study of data from the National Joint Registry for England and Wales. *Lancet* 2014;384(9952):1437-1445.
22. Baker PN, Jameson SS, Deehan DJ, et al. Mid-term equivalent survival of medial and lateral unicompartmental knee replacement: an analysis of data from a National Joint Registry. *J Bone Joint Surg Br* 2012;94(12):1641-1648.
23. Hunt LP, Ben-Shlomo Y, Clark EM, et al. 45-day mortality after 467 779 knee replacements for osteoarthritis from the National Joint Registry for England and Wales: an observational study. *Lancet* 2014;384(9952):1429-1436.
24. Robertsson O, Ranstam J. No bias of ignored bilaterality when analysing the revision risk of knee prostheses: Analysis of a population based sample of 44,590 patients with 55,298 knee prostheses from the national Swedish Knee Arthroplasty Register. *BMC Musculoskelet Disord* 2003;4:1-4.
25. Cox DR, Oakes D. *Analysis of survival data*. New York, New York: CRC Press; 1984.
26. Bennett S. Log-Logistic Regression-Models for Survival-Data. *Applied Statistics-Journal of the Royal Statistical Society Series C* 1983;32(2):165-171.
27. Cox DR. Regression Models and Life-Tables. *Breakthroughs in statistics*. New York, New York: Springer, 1992:527-541.
28. Cox DR. Partial Likelihood. *Biometrika* 1975;62(2):269-276.

29. Royston P, Parmar MKB. Flexible parametric proportional-hazards and proportional-odds models for censored survival data, with application to prognostic modelling and estimation of treatment effects. *Stat Med* 2002;21(15):2175-2197.
30. Durrleman S, Simon R. Flexible regression models with cubic splines. *Stat Med* 1989;8(5):551-561.
31. Ishwaran H, Kogalur UB, Blackstone EH, et al. Random Survival Forests. *Annals of Applied Statistics* 2008;2(3):841-860.
32. Breiman L. Random forests. *Mach Learn* 2001;45(1):5-32.
33. Leblanc M, Crowley J. Survival Trees by Goodness of Split. *J Am Stat Assoc* 1993;88(422):457-467.
34. Fan JJ, Su XG, Levine RA, et al. Trees for correlated survival data by goodness of split, with applications to tooth prognosis. *J Am Stat Assoc* 2006;101(475):959-967.
35. Dietrich S, Floegel A, Troll M, et al. Random Survival Forest in practice: a method for modelling complex metabolomics data in time to event analysis. *Int J Epidemiol* 2016;45(5):1406-1420.
36. Nelson W. Theory and Applications of Hazard Plotting for Censored Failure Data. *Technometrics* 1972;14(4):945-&.
37. Aalen O. Nonparametric Inference for a Family of Counting Processes. *Ann Stat* 1978;6(4):701-726.
38. Oshiro TM, Perez PS, Baranauskas JA. How many trees in a random forest? Presented at International Workshop on Machine Learning and Data Mining in Pattern Recognition 2012.

39. Akaike H. A New Look at the Statistical Model Identification. *Current Contents/Engineering Technology & Applied Sciences* 1981(51):22-22.
40. Arlot S, Celisse A. A survey of cross-validation procedures for model selection. *Statistics surveys* 2010;4:40-79.
41. Kim JH. Estimating classification error rate: Repeated cross-validation, repeated hold-out and bootstrap. *Computational Statistics & Data Analysis* 2009;53(11):3735-3745.
42. Proust-Lima C, Sene M, Taylor JM, et al. Joint latent class models for longitudinal and time-to-event data: a review. *Stat Methods Med Res* 2014;23(1):74-90.
43. Gerds TA, Schumacher M. Consistent estimation of the expected brier score in general survival models with right-censored event times. *Biometrical J* 2006;48(6):1029-1040.
44. Harrell FE, Califf RM, Pryor DB, et al. Evaluating the Yield of Medical Tests. *Jama-J Am Med Assoc* 1982;247(18):2543-2546.
45. Gerds TA, Kattan MW, Schumacher M, et al. Estimating a time-dependent concordance index for survival prediction models with covariate dependent censoring. *Stat Med* 2013;32(13):2173-2184.
46. Gerds TA, Andersen PK, Kattan MW. Calibration plots for risk prediction models in the presence of competing risks. *Stat Med* 2014;33(18):3191-3203.
47. Royston P, Ambler G, Sauerbrei W. The use of fractional polynomials to model continuous risk variables in epidemiology. *Int J Epidemiol* 1999;28(5):964-974.
48. Braga-Neto UM, Dougherty ER. Is cross-validation valid for small-sample microarray classification? *Bioinformatics* 2004;20(3):374-380.
49. Ishwaran H, Kogalur U. RandomForestSRC: random forests for survival, regression and classification (RF-SRC). *R package version* 2014;1(0).

50. Therneau T. A Package for Survival Analysis in S. version 2.38. 2015. (<https://CRAN.R-project.org/package=survival>). (Accessed 17 June 2016).
51. Therneau TM, Grambsch PM. *Modeling survival data: extending the Cox model*. New York, New York: Springer Science & Business Media; 2013.
52. Jackson CH. flexsurv: a platform for parametric survival modelling in R. *Journal of Statistical Software* 2016;70(8):1-33.
53. Mogensen UB, Ishwaran H, Gerds TA. Evaluating random forests for survival analysis using prediction error curves. *Journal of statistical software* 2012;50(11):1.
54. Friedman J, Hastie T, Tibshirani R. *The elements of statistical learning*. New York, New York: Springer series in statistics; 2001.
55. Friedman M. Piecewise Exponential Models for Survival-Data with Covariates. *Ann Stat* 1982;10(1):101-113.
56. Murray TA, Hobbs BP, Sargent DJ, et al. Flexible Bayesian Survival Modeling with Semiparametric Time-Dependent and Shape-Restricted Covariate Effects. *Bayesian Anal* 2016;11(2):381-402.
57. Cai T, Hyndman RJ, Wand MP. Mixed model-based hazard estimation. *J Comput Graph Stat* 2002;11(4):784-798.
58. Royston P, Altman DG, Sauerbrei W. Dichotomizing continuous predictors in multiple regression: a bad idea. *Stat Med* 2006;25(1):127-141.
59. Van Belle V, Pelckmans K, Van Huffel S, et al. Improved performance on high-dimensional survival data by application of Survival-SVM. *Bioinformatics* 2011;27(1):87-94.
60. Buhlmann P, Hothorn T. Boosting algorithms: Regularization, prediction and model fitting. *Stat Sci* 2007;22(4):477-505.

61. White IR, Royston P, Wood AM. Multiple imputation using chained equations: Issues and guidance for practice. *Stat Med* 2011;30(4):377-399.
62. Bhaskaran K, Smeeth L. What is the difference between missing completely at random and missing at random? *Int J Epidemiol* 2014;43(4):1336-1339.
63. Lambert PC, Wilkes SR, Crowther MJ. Flexible parametric modelling of the cause-specific cumulative incidence function. *Stat Med* 2017;36(9):1429-1446.
64. Ishwaran H, Gerds TA, Kogalur UB, et al. Random survival forests for competing risks. *Biostatistics* 2014;15(4):757-773.
65. Wynant W, Abrahamowicz M. Flexible estimation of survival curves conditional on non-linear and time-dependent predictor effects. *Stat Med* 2016;35(4):553-565.
66. Bleeker SE, Moll HA, Steyerberg EW, et al. External validation is necessary in prediction research: a clinical example. *J Clin Epidemiol* 2003;56(9):826-832.
67. Groenwold RH, Hak E, Hoes AW. Quantitative assessment of unobserved confounding is mandatory in nonrandomized intervention studies. *J Clin Epidemiol* 2009;62(1):22-28.

FIGURE LEGEND

Figure 1. Observed and predicted probabilities of remaining event-free from different models and for A) Total Knee Replacement, B) Unicondylar Knee Replacement and C) Patellofemoral Replacement using data from the National Joint Registry for England, Wales, Northern Ireland and the Isle of Man (between April 2003 and September 2015). Predicted probabilities of remaining event-free are obtained from different models including exponential model, Weibull model, log-logistic model, flexible parametric model (FPM) and

random survival forest (RFS). The Observed probability of remaining event-free is obtained from the Kaplan-Meier estimator.

Figure 2. Hazard estimates for different parametric models and for A) Total Knee Replacement, B) Unicondylar Knee Replacement and C) Patellofemoral Replacement using data from the National Joint Registry for England, Wales, Northern Ireland and the Isle of Man (between April 2003 and September 2015).

Figure 3. Calibration plots of prosthesis revision showing predicted risks (black bars) and observed risks (white bars) for different risk groups. (A, D) Total Knee Replacement, (B, E) Unicondylar Knee Replacement and (C, F) Patellofemoral Replacement. Top and bottom panels show the results for flexible parametric model and random survival forest respectively. Results obtained using data from the National Joint Registry for England, Wales, Northern Ireland and the Isle of Man (between April 2003 and September 2015).

Table 1. Baseline Characteristics of the Complete Dataset. The Data is From the National Joint Registry for England, Wales, Northern Ireland and the Isle of Man (Between April 2003 and September 2015).

| Characteristic | TKR | | | UKR | | | PFR | | |
|---|-------------------------|------|------|-------------------------|------|------|--------------------------|------|------|
| | No. | % | PTIR | No. | % | PTIR | No. | % | PTIR |
| Outcome | | | | | | | | | |
| Unrevised | 381,322 | 98.4 | | 36,009 | 95.5 | | 4,937 | 93.1 | |
| Revised | 6,137 | 1.6 | | 1,684 | 4.5 | | 366 | 6.9 | |
| Age, years | 70.2 (9.1) ^a | | 0.45 | 64.0 (9.7) ^a | | 1.25 | 59.6 (11.4) ^a | | 1.90 |
| BMI ^b | 70.2 (9.1) ^a | | 0.45 | 30.1 (5.0) ^a | | 1.25 | 29.5 (5.3) ^a | | 1.90 |
| Gender | | | | | | | | | |
| Female | 221,178 | 57.1 | 0.41 | 17,542 | 46.5 | 1.30 | 4,148 | 78.2 | 1.73 |
| Male | 166,281 | 42.9 | 0.50 | 20,151 | 53.5 | 1.21 | 1,155 | 21.8 | 2.53 |
| ASA Physical Status | | | | | | | | | |
| P1 | 39,075 | 10.1 | 0.49 | 8,179 | 21.7 | 1.32 | 1,378 | 26 | 1.80 |
| P2 | 286,693 | 74.0 | 0.44 | 26,432 | 70.1 | 1.22 | 3,503 | 66.1 | 1.95 |
| P3 | 61,691 | 15.9 | 0.49 | 3,082 | 8.2 | 1.37 | 422 | 8.0 | 1.82 |
| Chemical Prophylaxis | | | | | | | | | |
| None | 23,418 | 6.0 | 0.43 | 2,863 | 7.6 | 1.31 | 407 | 7.7 | 2.18 |
| Aspirin only | 27,996 | 7.2 | 0.42 | 4,407 | 11.7 | 1.16 | 745 | 14.0 | 1.63 |
| LMWH± Aspirin | 248,124 | 64.0 | 0.45 | 21,518 | 57.1 | 1.29 | 2,949 | 55.6 | 2.05 |
| Other/Other Combinations | 87,921 | 22.7 | 0.47 | 8,905 | 23.6 | 1.19 | 1,202 | 22.7 | 1.52 |
| Mechanical Prophylaxis^c | | | | | | | | | |
| None | 23,418 | 6.0 | 0.47 | 1,273 | 3.4 | 1.68 | 249 | 4.7 | 2.75 |
| Active | 84,589 | 21.8 | 0.46 | 8,476 | 22.5 | 1.17 | 1,234 | 23.3 | 1.45 |
| Passive | 125,239 | 32.3 | 0.44 | 11,820 | 31.4 | 1.22 | 1,488 | 28.1 | 2.31 |
| Both | 148,761 | 38.4 | 0.45 | 15,775 | 41.9 | 1.27 | 2,231 | 42.1 | 1.76 |
| Other/Other Combinations | 5,452 | 1.4 | 0.35 | 349 | 0.9 | 1.63 | 101 | 1.9 | 1.14 |
| Operation Type | | | | | | | | | |
| Unilateral | 381,650 | 98.5 | 0.45 | 35,542 | 94.3 | 1.29 | 4,791 | 90.3 | 2.02 |
| Simultaneous Bilateral | 5,809 | 1.5 | 0.31 | 2,151 | 5.7 | 0.75 | 512 | 9.7 | 0.80 |

Abbreviations: ASA, American Society of Anesthesiologists; BMI, Body Mass Index; PFR, Patellofemoral Replacement; PTIR, Patient-Time Incident Rate; SD, Standard Deviation; TKR, Total Knee Replacement; UKR, Unicondylar Knee Replacement.

^a Values are expressed as mean (standard deviation).

^b Weight (kg)/height (m)².

^c In Mechanical Prophylaxis, Active includes foot pump and calf compression whereas Passive is ThromboEmbolic Disease (TED) stockings.

Table 2. Parametric and Semi-parametric Cox Models of Prosthesis Survivorship for Total Knee Replacement Using Data From the National Joint Registry for England, Wales, Northern Ireland and the Isle of Man (Between April 2003 and September 2015).

| Characteristic | Exponential Model | | Weibull Model | | FPM | | Cox Model | | Log-logistic Model | |
|-------------------------------------|-------------------|--------------|---------------|--------------|-------|--------------|-----------|--------------|--------------------|--------------|
| | HR | 95% CI | HR | 95% CI | HR | 95% CI | HR | 95% CI | OR | 95% CI |
| Age, years | 0.955 | 0.953, 0.958 | 0.953 | 0.950, 0.956 | 0.955 | 0.953, 0.958 | 0.955 | 0.953, 0.958 | 0.953 | 0.950, 0.956 |
| BMI ^a | 1.009 | 1.004, 1.014 | 1.009 | 1.004, 1.014 | 1.008 | 1.003, 1.013 | 1.008 | 1.003, 1.013 | 1.009 | 1.004, 1.014 |
| Gender | | | | | | | | | | |
| Female | 1.000 | Referent | 1.000 | Referent | 1.000 | Referent | 1.000 | Referent | 1.000 | Referent |
| Male | 1.211 | 1.151, 1.274 | 1.222 | 1.158, 1.289 | 1.207 | 1.148, 1.270 | 1.207 | 1.148, 1.270 | 1.224 | 1.160, 1.291 |
| ASA Physical Status | | | | | | | | | | |
| P2 | 1.000 | Referent | 1.000 | Referent | 1.000 | Referent | 1.000 | Referent | 1.000 | Referent |
| P1 | 0.925 | 0.854, 1.003 | 0.924 | 0.849, 1.005 | 0.932 | 0.860, 1.010 | 0.932 | 0.860, 1.010 | 0.923 | 0.848, 1.005 |
| P3 | 1.229 | 1.146, 1.319 | 1.240 | 1.152, 1.335 | 1.225 | 1.142, 1.314 | 1.224 | 1.141, 1.312 | 1.242 | 1.154, 1.338 |
| Chemical Prophylaxis | | | | | | | | | | |
| LMWH± Aspirin | 1.000 | Referent | 1.000 | Referent | 1.000 | Referent | 1.000 | Referent | 1.000 | Referent |
| Aspirin Only | 0.931 | 0.851, 1.018 | 0.938 | 0.854, 1.030 | 0.979 | 0.895, 1.071 | 0.980 | 0.896, 1.072 | 0.939 | 0.855, 1.033 |
| None | 0.969 | 0.884, 1.063 | 0.982 | 0.891, 1.081 | 1.028 | 0.938, 1.128 | 1.029 | 0.938, 1.128 | 0.983 | 0.891, 1.083 |
| Other/Other Combinations | 1.034 | 0.966, 1.106 | 1.020 | 0.950, 1.096 | 0.969 | 0.905, 1.037 | 0.963 | 0.900, 1.030 | 1.018 | 0.948, 1.094 |
| Mechanical Prophylaxis ^b | | | | | | | | | | |
| Both | 1.000 | Referent | 1.000 | Referent | 1.000 | Referent | 1.000 | Referent | 1.000 | Referent |
| Active | 0.993 | 0.927, 1.06 | 0.991 | 0.921, 1.065 | 0.982 | 0.917, 1.053 | 0.982 | 0.917, 1.053 | 0.990 | 0.921, 1.065 |
| Passive | 0.973 | 0.916, 1.034 | 0.974 | 0.914, 1.038 | 0.979 | 0.921, 1.041 | 0.981 | 0.923, 1.042 | 0.974 | 0.914, 1.039 |
| None | 1.017 | 0.924, 1.120 | 1.030 | 0.931, 1.139 | 1.068 | 0.938, 1.128 | 1.068 | 0.969, 1.176 | 1.031 | 0.931, 1.142 |
| Other/Other Combinations | 0.784 | 0.613, 1.004 | 0.776 | 0.600, 1.006 | 0.797 | 0.623, 1.020 | 0.797 | 0.622, 1.020 | 0.774 | 0.598, 1.004 |
| Operation Type | | | | | | | | | | |
| Unilateral | 1.000 | Referent | 1.000 | Referent | 1.000 | Referent | 1.000 | Referent | 1.000 | Referent |
| Simultaneous Bilateral | 0.602 | 0.480, 0.756 | 0.589 | 0.464, 0.748 | 0.610 | 0.486, 0.765 | 0.609 | 0.486, 0.764 | 0.587 | 0.463, 0.746 |

Abbreviations: ASA, American Society of Anesthesiologists; BMI, Body Mass Index; CI, Confidence Interval; FPM, Flexible Parametric Model; HR, Hazard Ratio; OR, Odds Ratio.

^a Weight (kg)/height (m)².

^b In Mechanical Prophylaxis, Active includes foot pump and calf compression whereas Passive is ThromboEmbolic Disease (TED) stockings.

Table 3. Model Fit Statistics for Different Parametric Models Using Data From the National Joint Registry for England, Wales, Northern Ireland and the Isle of Man (Between April 2003 and September 2015).

| Model | TKR | | | UKR | | | PFR | | |
|--------------------|-----|--------|--------|-----|--------|--------|-----|-------|-------|
| | DF | Dev | AIC | DF | Dev | AIC | DF | Dev | AIC |
| Exponential Model | 14 | 77,276 | 77,304 | 14 | 17,929 | 17,957 | 14 | 3,547 | 3,575 |
| Weibull Model | 15 | 77,258 | 77,288 | 15 | 17,926 | 17,956 | 15 | 3,535 | 3,565 |
| Log-logistic Model | 15 | 77,251 | 77,281 | 15 | 17,922 | 17,952 | 15 | 3,531 | 3,561 |
| FPM | 18 | 76,606 | 76,642 | 18 | 17,829 | 17,865 | 16 | 3,505 | 3,537 |

Abbreviations: AIC, Akaike Information Criterion; Dev, Deviance; DF, Degree of Freedom; FPM, Flexible Parametric Model; PFR, Patellofemoral Replacement; TKR, Total Knee Replacement; UKR, Unicondylar Knee Replacement.

Table 4. Results of Integrated Brier Score Using Data From the National Joint Registry for England, Wales, Northern Ireland and the Isle of Man (Between April 2003 and September 2015).

| Model and Procedure | Integrated Brier Score | | | |
|---------------------|------------------------|--------------|-----------|--------------|
| | t=5 years | 95% CI | t=8 years | 95% CI |
| FPM | | | | |
| TKR | 0.014 | 0.014, 0.014 | 0.020 | 0.020, 0.020 |
| UKR | 0.036 | 0.036, 0.036 | 0.052 | 0.052, 0.052 |
| PFR | 0.058 | 0.058, 0.059 | 0.074 | 0.073, 0.075 |
| RSF | | | | |
| TKR | 0.015 | 0.015, 0.015 | 0.020 | 0.020, 0.020 |
| UKR | 0.037 | 0.037, 0.037 | 0.052 | 0.052, 0.052 |
| PFR | 0.059 | 0.059, 0.059 | 0.073 | 0.072, 0.074 |

Abbreviations: CI, Confidence Interval; FPM, Flexible Parametric Model; PFR, Patellofemoral Replacement; RSF, Random Survival Forest; TKR, Total Knee Replacement; UKR, Unicondylar Knee Replacement.

Table 5. Results of C Index at 8 Years Using Data From the National Joint Registry for England, Wales, Northern Ireland and the Isle of Man (Between April 2003 and September 2015).

| Model | TKR | | UKR | | PFR | |
|-------|---------|--------------|---------|--------------|---------|--------------|
| | C index | 95% CI | C index | 95% CI | C index | 95% CI |
| FPM | 0.705 | 0.702, 0.707 | 0.639 | 0.634, 0.643 | 0.589 | 0.586, 0.592 |
| RSF | 0.660 | 0.655, 0.666 | 0.616 | 0.610, 0.621 | 0.579 | 0.575, 0.582 |

Abbreviations: C Index, Concordance Index; CI, Confidence Interval; FPM, Flexible Parametric Model; PFR, Patellofemoral Replacement; RSF, Random Survival Forest; TKR, Total Knee Replacement; UKR, Unicdylar Knee Replacement.

ORIGINAL UNEDITED MANUSCRIPT

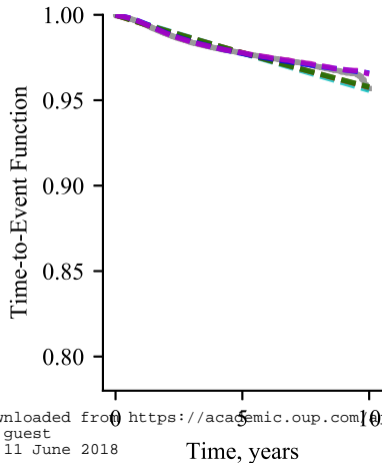
Table 6. Observed Versus Predicted Risks of Prosthesis Revision for Different Risk Groups Using Data From the National Joint Registry for England, Wales, Northern Ireland and the Isle of Man (Between April 2003 and September 2015).

| Model and Risk Group | TKR | | UKR | | PFR | |
|----------------------|---|--------------------------------|----------------------------------|--------------------------------|----------------------------------|--------------------------------|
| | Predicted Probability, mean (SD) ^a | Ratio of Observed to Predicted | Predicted Probability, mean (SD) | Ratio of Observed to Predicted | Predicted Probability, mean (SD) | Ratio of Observed to Predicted |
| FPM | | | | | | |
| 1 | 1.47 (0.0006) | 1.16 | 5.33 (0.0106) | 1.32 | 5.67 (0.0581) | 1.28 |
| 2 | 1.89 (0.0005) | 1.04 | 6.79 (0.0073) | 1.18 | 8.83 (0.0483) | 1.37 |
| 3 | 2.19 (0.0005) | 1.00 | 7.67 (0.0070) | 0.96 | 10.47 (0.0511) | 1.05 |
| 4 | 2.48 (0.0005) | 0.84 | 8.41 (0.0065) | 1.02 | 11.77 (0.0453) | 1.05 |
| 5 | 2.79 (0.0005) | 0.97 | 9.11 (0.0055) | 1.16 | 13.02 (0.0409) | 1.01 |
| 6 | 3.14 (0.0006) | 1.24 | 9.85 (0.0066) | 1.14 | 14.35 (0.0436) | 0.98 |
| 7 | 3.53 (0.0005) | 1.12 | 10.70 (0.0077) | 0.92 | 15.84 (0.0406) | 1.04 |
| 8 | 4.04 (0.0008) | 1.16 | 11.72 (0.0081) | 1.34 | 17.67 (0.0562) | 1.01 |
| 9 | 4.77 (0.0008) | 1.36 | 13.1 (0.0116) | 1.13 | 20.18 (0.0701) | 0.92 |
| 10 | 6.71 (0.0017) | 1.44 | 16.41 (0.0245) | 1.16 | 25.99 (0.1186) | 0.98 |
| RSF | | | | | | |
| 1 | 0.64 (0.0041) | 3.13 | 4.00 (0.0325) | 1.84 | 6.70 (0.1375) | 1.25 |
| 2 | 1.16 (0.0056) | 1.97 | 5.71 (0.0272) | 1.38 | 9.05 (0.1053) | 1.22 |
| 3 | 1.59 (0.0071) | 1.56 | 6.82 (0.0243) | 1.18 | 10.59 (0.1141) | 1.11 |
| 4 | 2.02 (0.0087) | 1.35 | 7.84 (0.0265) | 1.13 | 11.96 (0.1249) | 1.09 |
| 5 | 2.49 (0.0116) | 1.28 | 8.88 (0.0253) | 1.13 | 13.26 (0.1231) | 1.02 |
| 6 | 3.03 (0.0123) | 1.13 | 10.01 (0.0287) | 1.19 | 14.62 (0.1146) | 1.00 |
| 7 | 3.68 (0.0131) | 1.04 | 11.23 (0.0358) | 1.23 | 16.09 (0.1194) | 1.03 |
| 8 | 4.56 (0.0168) | 1.03 | 12.64 (0.0420) | 1.13 | 17.72 (0.1517) | 1.00 |
| 9 | 5.93 (0.0271) | 1.05 | 14.52 (0.0470) | 0.88 | 19.69 (0.1695) | 1.05 |
| 10 | 9.83 (0.0745) | 0.87 | 19.09 (0.0700) | 0.90 | 23.20 (0.2855) | 0.90 |

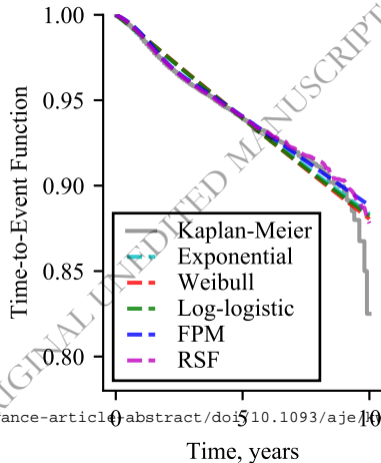
Abbreviations: FPM, Flexible Parametric Model; PFR, Patellofemoral Replacement; RSF, Random Survival Forest; SD, Standard Deviation; TKR, Total Knee Replacement; UKR, Unicdylar Knee Replacement.

^a Predicted probabilities (%) are expressed as mean (standard deviation).

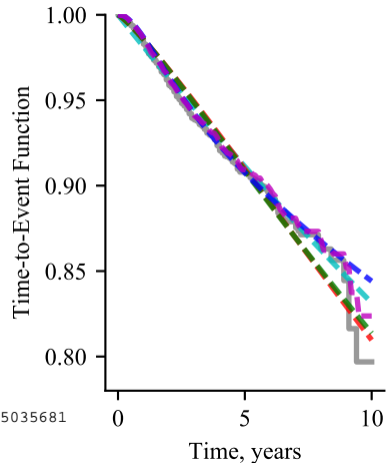
A)



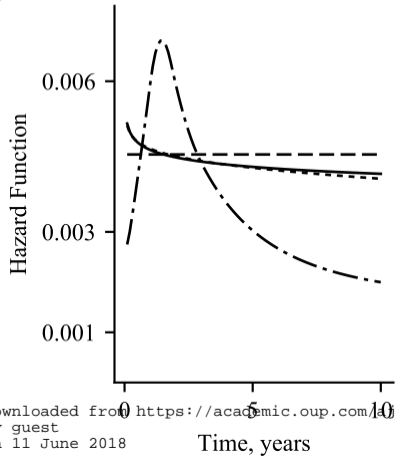
B)



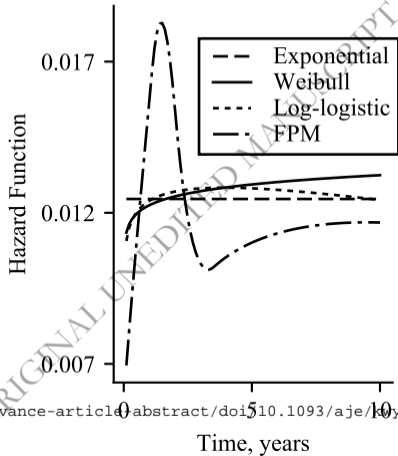
C)



A)



B)



C)

