

PDF hosted at the Radboud Repository of the Radboud University Nijmegen

The following full text is a publisher's version.

For additional information about this publication click this link.

<http://hdl.handle.net/2066/21493>

Please be advised that this information was generated on 2017-12-05 and may be subject to change.

Vitamin E and Fatty Acid Intervention Does Not Attenuate the Progression of Atherosclerosis in Watanabe Heritable Hyperlipidemic Rabbits

Henne A. Kleinveld, Heidi L.M. Hak-Lemmers, Magda P.C. Hectors, Nanneke J. de Fouw, Pierre N.M. Demacker, Anton F.H. Stalenhoef

Abstract We investigated the effect of different interventions on aortic atherosclerosis in Watanabe rabbits. Four groups of rabbits were fed either an oleic acid-enriched diet (80% of total fat intake) with or without vitamin E supplementation (250 IU/kg) or a diet enriched in linoleic acid with or without vitamin E supplementation for 6 months. At the start of the study, plasma cholesterol concentration was 21.4 ± 3.6 mmol/L ($n=32$). The diets did not influence the mean plasma lipids and lipoprotein concentrations except for HDL cholesterol, which was increased more on the oleic acid-enriched diets than on the linoleic acid-enriched diets. Vitamin E levels in plasma and LDL were increased on the oleic acid diet and reduced on the linoleic acid diet. On the latter diet, supplementation of vitamin E was quantitatively less effective in raising plasma or LDL vitamin E levels. The susceptibility of LDL to oxidation was determined in vitro. Both oleic acid-enriched diets increased the lag time by

140% from baseline. The linoleic acid diet supplemented with vitamin E increased lag time by 59%. Linoleic acid alone, however, decreased the lag time by 30%. Similar but inverse effects were seen on LDL oxidation rate. Thus, intervention protected LDL to oxidation in the following order: oleic acid plus vitamin E > oleic acid > linoleic acid plus vitamin E > linoleic acid. Despite the differences in LDL oxidizability induced by the four experimental diets, assessment of aortic atherosclerosis at the end of the 6-month dietary study period revealed no differences among the four study groups. These results suggest that a decrease in the oxidative susceptibility in vitro alone is not sufficient to attenuate atherogenesis when cholesterol levels remain markedly elevated. (*Arterioscler Thromb Vasc Biol.* 1995;15:290-297.)

Key Words • LDL oxidation • unsaturated fatty acids • antioxidants • atherosclerosis • WHHL rabbits

Oxidation of LDL is believed to be an important step in the process of atherogenesis.^{1,2} Several lines of evidence support this concept,³⁻⁸ but the strongest evidence comes from studies in which treatment with the synthetic antioxidant probucol slowed the progression of atherosclerotic lesion formation in Watanabe heritable hyperlipidemic (WHHL) rabbits, an animal model for homozygous familial hypercholesterolemia.^{9,10}

In vitro, several cell types have been shown to oxidize LDL.¹¹⁻¹⁴ The cell-mediated oxidation can be mimicked in a cell-free system with copper as a prooxidant.¹⁵ LDL oxidation can be monitored continuously by measuring diene production as a measure of lipid peroxidation. This method allows a sensitive assessment of various indexes that together describe the oxidizability of LDL. Typically, oxidation of LDL can be divided into three consecutive phases: (1) a lag phase during which there is almost no diene production, (2) a propagation phase characterized by a rapid increase in diene production, and (3) a decomposition phase during which diene production reaches its maximum and then the dienes start to decompose. Copper-induced in vitro oxidation of LDL has been used widely to evaluate the effectiveness

of antioxidant therapy and dietary intervention on LDL oxidizability. It has been shown that in vitro and in vivo supplementation of LDL with vitamin E, the major lipophylic antioxidant, increases its resistance against oxidation.¹⁶⁻¹⁸ This suggests that the oxidation resistance of LDL is determined primarily by its vitamin E (antioxidant) content; in other words, the lag phase should be predictable from the vitamin E (antioxidant) status of a particular LDL sample. However, in our assay with highly reproducible oxidizability, we found no such correlation.¹⁵ This indicates that other factors contribute to the oxidizability of LDL.

Traditionally, dietary advice has included a reduction in total fat and replacement of saturated fat by unsaturated fat.¹⁹ Diets in which saturated fatty acids are substituted for polyunsaturated fatty acids lower plasma cholesterol levels.²⁰⁻²² A recent meta-analysis of 27 trials clearly showed that substitution of saturated fat for unsaturated fat created a more favorable lipoprotein risk profile for coronary heart disease.²³ Diets rich in mono-unsaturated fatty acids have also been shown to lower plasma LDL cholesterol levels.^{20,22-26} Comparatively little is known about the effect of dietary enrichment with unsaturated fatty acids on atherosclerosis. A recent study in African green monkeys showed that dietary polyunsaturated fatty acids reduced atherosclerosis development compared with saturated fat.²⁷ Similar effects in African green monkeys have been observed for dietary fish oil and monounsaturated fat.^{28,29}

One of the first steps in the oxidative modification of LDL is the peroxidation of polyunsaturated fatty acids.¹⁶ Theoretically, LDL rich in polyunsaturated fatty acids

Received May 31, 1994; revision accepted December 2, 1994.

From the Department of General Internal Medicine, University Hospital, Nijmegen, and Unilever Research Laboratory (N.J. de F), Vlaardingen, the Netherlands.

Correspondence to Anton F.H. Stalenhoef, MD, Department of General Internal Medicine, University Hospital Nijmegen, PO Box 9101, 6500 HB Nijmegen, the Netherlands.

© 1995 American Heart Association, Inc.

TABLE 1. Fatty Acid Composition and Vitamin E Content of Experimental Diets

Component	Study Diet*			
	Oleic	Linoleic	Oleic+E	Linoleic+E
Fatty acid				
Palmitic acid (16:0)	6.7	7.0	6.7	7.0
Stearic acid (18:0)	4.3	2.6	4.3	2.6
Oleic acid (18:1)	74.6	13.1	74.6	13.1
Linoleic acid (18:2)	12.6	76.0	12.6	76.0
Linolenic acid (18:3)	0.1	0.3	0.1	0.3
Vitamin E, mg/kg				
D- α -Tocopherol	50.9	46.5	50.9	46.5
DL- α -Tocopherol acetate	250	250

Four diets were studied: an oleic acid-enriched diet (Oleic), a linoleic acid-enriched diet (Linoleic), and two similar diets, each supplemented with 250 mg vitamin E per 1 kg (Oleic+E and Linoleic+E, respectively). Vitamin E in the diets is natural D- α -tocopherol (1 mg=1.49 IU vitamin E) derived from the vegetable oils used. The Oleic+E and Linoleic+E diets were supplemented with synthetic DL- α -tocopherol acetate (1 mg=1 IU vitamin E).

*Percentage of total fat.

should be more easily oxidized and therefore may be more atherogenic. Plasma LDL of rabbits and humans fed a diet rich in oleic acids is more resistant to oxidation compared with linoleic acid.^{25,30,31} A recent dietary study by Bonanome et al³² showed that the in vitro peroxidation rate of plasma LDL was inversely correlated with the ratio of oleic acid to linoleic acid in the LDL particle. We recently found that the peroxidation rate of plasma LDL also is determined in the basal state by this ratio.³³ Moreover, the resistance of LDL against oxidation (lag time) and the extent of oxidation (total diene production) were shown to be highly correlated positively and negatively, respectively, with the ratio of oleic acid to linoleic acid.³³ If LDL oxidation proves to be an important step in atherogenesis, then diets rich in monounsaturated fatty acids supplemented with lipophilic antioxidants would be the strategy of choice in providing sufficient protection against oxidative modification. In the present study, we evaluated the effect of such a combination on the susceptibility of LDL to oxidation and the development of aortic atherosclerosis in the WHHL rabbit.

Methods

Animals and Study Design

Thirty-two homozygous WHHL rabbits were raised by crossing and backcrossing with New Zealand White (NZW) rabbits. The animals were housed individually in wire-bottom stainless-steel cages under controlled light. Until the start of the study, the rabbits were fed a standard rabbit chow (LK04 diet, Hope Farms) containing 3% (wt/wt) fat, with 40% linoleic acid (18:2) and 20% oleic acid (18:1). The standard chow contained 0.007% (wt/wt) DL- α -tocopherol acetate (1 mg=1 IU). The rabbits were divided into four groups of eight animals with matched ages, body weights, and serum cholesterol and serum triglyceride concentrations. Their mean age at the start of the study was 5.0 ± 1.7 months (range, 3.5 to 7 months).

The groups were fed semisynthetic diets containing 10% (wt/wt) fat. The diets were prepared fresh each month and stored at -40°C until use. The diet components were calcium caseinate (186 g/kg), mineral mixture (39.5 g/kg), fat mixture (100 g/kg), starch (453.5 g/kg), fiber (166 g/kg), grass meal (50 g/kg), and vitamin mixture (5 g/kg). The diets contained 30% of calories as fat, 50% as carbohydrates, and 20% as protein. The diets differed only in their fatty acid composition and vitamin E content (Table 1). Two groups received a linoleate (safflower

oil)-enriched diet containing approximately 75% linoleic acid; the two other groups received an oleate (Trisun 80)-enriched diet that contained approximately 75% oleic acid. One linoleate-enriched diet and one oleate-enriched diet were supplemented with extra vitamin E (DL- α -tocopherol acetate); the final vitamin E concentration in the supplemented diets was 250 mg/kg (0.025%, wt/wt). The nonsupplemented diets contained 0.005% (wt/wt) vitamin E. Each rabbit was given 100 g of their respective diets daily for 6 months. Water was provided ad libitum. Dietary consumption and weight gain did not differ among the animals of the four groups during the study period.

Blood Sampling

Fasting blood samples were obtained from the marginal ear vein at the start of the study; after 1, 2, and 4 months; and at the end of the study period (6 months). Blood samples were collected into tubes containing 0.1 mL 15% (wt/vol) EDTA (Merck). Plasma was stored at -80°C until assayed. Before the samples were frozen, saccharose (6 mg/mL) was added to the plasma to stabilize the lipoproteins.

LDL Isolation and Oxidation

LDLs were isolated by a short-run ultracentrifugation method¹⁵ followed by in vitro copper-induced LDL oxidation.¹⁵ In brief, after isolation the LDL was dialyzed for 24 hours in the dark at 4°C against phosphate-buffered saline (pH 7.4) containing 10 $\mu\text{mol/L}$ EDTA. The buffer was made oxygen-free by vacuum degassing followed by purging with nitrogen. The LDL-containing sample was filtered through a 0.45- μm filter and diluted with dialysis buffer to a final concentration of 0.05 mg LDL protein per milliliter and 1 μmol EDTA/L. The oxidation was initiated by the addition of a freshly prepared, 15- $\mu\text{mol/L}$ CuCl_2 solution. The kinetics of the oxidation of LDL was determined by monitoring the change of the 234-nm diene absorption on a UV spectrophotometer (Lambda 5, Perkin-Elmer) equipped with a six-position automatic sample changer at 30°C . The change of absorbance at 234 nm versus time was divided into three consecutive phases, ie, lag, propagation, and decomposition phases. Lag time, maximal rate of oxidation, and total amount of conjugated dienes formed per 1 mg LDL protein were calculated as described.¹⁵ Addition of 3 or 10 μg vitamin E dissolved in 10 μL isopropanol per milliliter of LDL did not quench the absorbance (at 234 nm) of control LDL.

In Vivo Lipid Peroxidation

The content of thiobarbituric reactive substances (TBARS), mainly malondialdehyde (MDA), in plasma was measured by recording the fluorescence spectrum of the thiobarbituric acid-

TABLE 2. Plasma Lipids and Lipoproteins at Baseline and After 6 Months in Four Groups of Eight WHHL Rabbits on Experimental Diets

	Baseline	Study Diet			
		Oleic	Linoleic	Oleic+E	Linoleic+E
Total cholesterol	21.4±3.6	23.7±4.0*	21.9±3.8	25.4±4.6	24.2±4.5
Triglycerides	2.72±1.51	1.50±0.57*	1.36±0.37*	1.40±0.40*	2.03±1.04
VLDL+IDL cholesterol	6.4±3.4	11.6±2.8‡	9.4±3.2	12.4±4.4†	10.6±3.5*
LDL cholesterol	14.8±3.5	11.8±2.4†	12.3±2.8	12.7±2.7†	13.3±3.3
HDL cholesterol	0.20±0.05	0.36±0.17*	0.25±0.10*	0.37±0.09‡	0.25±0.08

WHHL indicates Watanabe heritable hyperlipidemic rabbits. Composition of the diets is as shown in Table 1. Results are expressed in mmol/l.

* $P < .05$, † $P < .01$, ‡ $P < .001$ vs baseline.

MDA complex between 500 and 600 nm on a Shimadzu RFF-5000 recording spectrofluorometer (Shimadzu), with a constant interval of 14 nm maintained between excitation and emission wavelengths.³⁴ The fluorescence intensity was measured at 553 nm after subtraction of the baseline value (owing to the Rayleigh diffusion). This synchronous fluorescence method was found to be free from interfering compounds.³⁴

Extent of Aortic Atherosclerosis

At the end of the study period, the rabbits were anesthetized intramuscularly with 0.1 mL/kg Hypnorm (Janssen Pharmaceutica). The entire aorta from the aortic valve to the iliac bifurcation was removed, cleaned of excess adventitial tissue, and rinsed with saline. The aortas were opened by a longitudinal incision over the total length and fixed between two glass plates for at least 24 hours in 10% buffered formaldehyde solution. After fixation, the aortas were stained with Sudan IV (Sigma Chemical Co) to identify lipid-containing atherosclerotic plaques. The area covered with atherosclerotic lesions was quantified with a computer-assisted planimetry system (Kontron-Vidas^{plus} system) coupled to a video camera (Sony). The extent of atherosclerotic lesions was quantified for the total aorta and for the three segments divided by the first intercostal artery and the celiac artery: the aortic arch, the descending thoracic aorta, and the abdominal aorta.

Other Methods

Total cholesterol, free (unesterified) cholesterol, phospholipids, and triglycerides in LDL samples were determined by commercially available enzymatic methods (numbers 237574, 310328, and 691844, Boehringer-Mannheim, and number 6639, Miles Laboratories, respectively). LDL protein was determined by the method of Lowry et al.³⁵

Cholesterol and triglyceride concentrations in plasma were determined with enzymatic methods. Plasma HDL cholesterol was determined by the polyethylene glycol 6000 method.³⁶ The plasma VLDL+IDL fraction ($d < 1.019$ kg/L) was isolated by sequential ultracentrifugation³⁷; LDL was isolated at $1.019 < d < 1.063$ kg/L. Fatty acids in LDL were determined by

gas chromatography.³³ The vitamin E concentrations in LDL and plasma were determined by high-performance liquid chromatography as described previously.³⁸

Statistical Analysis

Results are expressed as mean±SD. Unless otherwise indicated, differences among group means were analyzed by one-way ANOVA. Differences among group means that developed during the 6-month study period were analyzed by multivariate analysis of variance. For comparisons among groups, Student's (unpaired) two-sample *t* test was used. For paired observations, data were analyzed by Student's *t* test. A two-tailed probability value of less than .05 was considered significant. Statistical analyses were performed with procedures available in the SPSS/PC+ statistical package (SPSS Inc).

Results

Plasma Lipids and Lipoproteins

Table 2 shows the effects of the four diets on plasma lipid and lipoprotein levels. Total plasma cholesterol concentration in the rabbits was strongly elevated throughout the study; the basal concentration was 21.4±3.6 mmol/L. Except for the rabbits on the oleic acid-enriched diet (Oleic), total cholesterol concentrations were not changed after the 6-month study period. In contrast, plasma triglycerides declined in almost all dietary groups. Also, LDL cholesterol tended to be lower during the study period; in the rabbits on the oleic acid-enriched diets (Oleic and Oleic+E), this decrease was significant. VLDL+IDL cholesterol and HDL cholesterol concentrations increased most markedly on the oleic acid-enriched diets.

Only the effects of the four diets on plasma HDL cholesterol were significantly different; ie, the oleic acid-enriched diets resulted in higher HDL cholesterol concentrations than did the linoleic acid-enriched diets (Oleic

TABLE 3. Vitamin E (α -Tocopherol) in Plasma and LDL in Four Groups of WHHL Rabbits on Experimental Diets for 6 Months

	Diet	Baseline	1 Month	2 Months	4 Months	6 Months
Plasma, mg/L	Oleic	20.2±5.7	25.9±6.5‡	34.8±4.8‡	43.0±8.2‡	34.5±5.2‡
	Linoleic	20.2±7.8	14.2±11.5*	13.4±5.5*	17.4±5.8	13.0±2.7*
	Oleic+E	17.8±2.9	68.1±18.7‡	84.6±16.1‡	86.4±13.4‡	51.8±7.8‡
	Linoleic+E	19.0±7.2	48.1±9.0‡	66.3±12.5‡	81.0±9.4‡	62.0±17.1‡
LDL, mg/g LDL protein	Oleic	3.92±1.02	4.58±0.77	5.87±0.85†	6.12±1.51†	6.66±1.13‡
	Linoleic	3.90±0.83	2.24±0.36‡	2.01±0.57‡	2.54±0.54†	2.11±0.76†
	Oleic+E	3.94±0.65	12.90±2.58‡	13.74±4.13‡	14.10±4.13‡	10.47±2.52‡
	Linoleic+E	3.81±1.79	9.17±1.42‡	11.20±1.41‡	12.30±1.56‡	10.56±1.80‡

Composition of the diets is as shown in Table 1. n=8 Watanabe heritable hyperlipidemic (WHHL) rabbits for each dietary group. * $P < .05$, † $P < .01$, ‡ $P < .001$ vs baseline.

TABLE 4. Fatty Acid Composition of LDL at Baseline and After 6 Months in Four Groups of WHHL Rabbits Fed an Experimental Diet

Fatty Acid	Baseline (n=32)	Experimental Diet			
		Oleic	Linoleic	Oleic+E	Linoleic+E
Palmitic acid (16:0)	22.0±1.8	17.7±1.1‡	18.9±1.4†	18.4±0.6‡	18.1±1.1‡
Stearic acid (18:0)	8.7±0.5	8.0±0.7*	8.5±0.5	8.0±0.3*	8.6±0.6
Oleic acid (18:1)	22.8±2.3	46.7±2.1‡	17.8±1.8‡	43.7±2.0‡	16.7±0.7‡
Linoleic acid (18:2)	38.7±2.2	23.6±1.9‡	49.4±2.9‡	25.4±1.5‡	52.4±1.5‡
Linolenic acid (18:3)	3.0±0.5	0.7±0.2‡	1.0±0.2‡	1.1±0.3‡	0.7±0.3‡
Arachidonic acid (20:4)	4.8±1.0	3.4±0.7†	4.5±0.8	3.4±1.1‡	3.6±1.1†

Experimental diets are as shown in Table 1. n=8 Watanabe heritable hyperlipidemic (WHHL) rabbits for each group. Results are expressed as weight percentage of total fatty acids.

* $P<.05$, † $P<.01$, ‡ $P<.001$ vs baseline.

versus Linoleic, $P=.01$; Oleic+E versus Linoleic+E, $P=.001$; MANOVA).

Vitamin E in Plasma and LDL

Table 3 summarizes plasma and LDL vitamin E levels. The Oleic diet resulted in a significant increase in both plasma and LDL vitamin E levels. After 4 months, plasma vitamin E reached a peak at 43.0 ± 8.2 mg/L, an increase of 113% from baseline levels. Vitamin E in LDL was maximal at 6 months with 6.66 ± 1.13 mg/g LDL protein, an increase of 70% from baseline. In contrast, the Linoleic diet resulted in a decrease of plasma vitamin E and the vitamin E content of LDL. After 6 months on this diet, plasma vitamin E levels had decreased 36% to 13.0 ± 2.7 mg/L. In the same period, LDL vitamin E content was reduced 46% to 2.11 ± 0.76 mg/g LDL protein. The effects of the Oleic diet on plasma vitamin E and on vitamin E in LDL were significantly different from the effects of the Linoleic diet (both $P<.001$). Both vitamin E-supplemented diets resulted in comparable increases of vitamin E concentrations in plasma and LDL.

Fatty Acid Content and Chemical Composition of LDL

Table 4 shows the fatty acid composition of plasma LDL. No difference in fatty acid composition of LDL was found between the Oleic group and the Oleic+E group; neither was a difference observed between the Linoleic group and the Linoleic+E group. The oleic acid and linoleic acid content of LDL in the Oleic groups differed significantly from those of the Linoleic group. Oleic acid was approximately 45% of total fatty acids in LDL from rabbits on the Oleic diets; in rabbits on the Linoleic diets, this was <20%. The linoleic acid content in the rabbits fed Oleic diets was approximately 25%; in

rabbits fed the Linoleic diets, the linoleic acid content was approximately 50%.

Besides the changes in oleic acid and linoleic acid content, all diet groups showed a decrease in palmitic acid (16:0) and linolenic acid (18:3) compared with baseline. Except for the group on the Linoleic diet, arachidonic acid (20:4) content of LDL was also reduced. The groups on the Oleic diets showed an additional decrease of the stearic acid (18:0) content of their LDL.

The change from normal rabbit chow to synthetic diets resulted in a general alteration in the chemical composition of LDL (Table 5); this change was basically the same for all diet groups. Both free cholesterol and cholesterol ester content of LDL increased on the synthetic diets; in contrast, the relative content of triglycerides decreased. Protein content was unchanged in two groups, slightly decreased in the group on the Oleic diet, and slightly increased in the group on the Linoleic+E diet.

LDL Oxidation

Fig 1 shows typical examples of LDL oxidation curves. This figure clearly shows the effect of a monounsaturated fatty acid-enriched diet and a polyunsaturated fatty acid diet on the oxidation profile of LDL. Fig 2 shows the effects of the four different diets on lag time. At baseline, the mean lag time was 105.0 ± 14.9 minutes (n=32). After only 1 month on the synthetic diets, the differential effects were apparent. LDL of the rabbits that received the Linoleic diet appeared significantly less resistant against oxidation; in general, lag time was reduced approximately 30% compared with baseline. The other three diet groups showed an increase in lag time; for the Linoleic+E group, the increase was 59% after 6 months. Although the Oleic+E diet was more

TABLE 5. Chemical Composition of LDL at Baseline and After 6 Months in Four Groups of WHHL Rabbits Fed Different Experimental Diets

	Baseline (n=32)	Experimental Diet			
		Oleic	Linoleic	Oleic+E	Linoleic+E
Free cholesterol	9.1±0.5	10.3±0.7*	9.7±0.3‡	10.0±0.5†	9.8±0.7†
Cholesterol esters	42.1±4.3	46.9±2.3*	46.8±1.8*	46.8±2.6*	44.6±3.4
Triglycerides	7.5±3.5	3.5±1.9†	3.2±1.1†	3.8±1.8*	5.1±2.9*
Phospholipids	18.6±0.9	18.4±0.6	18.0±0.5	18.3±7.8	17.4±0.7*
Protein	22.7±1.5	20.9±1.4*	22.3±1.1	21.2±1.2	23.7±1.4*

Experimental diets are as shown in Table 1. n=8 Watanabe heritable hyperlipidemic (WHHL) rabbits for each group. Results are expressed as weight percentage of total LDL.

$P<.05$, † $P<.01$, ‡ $P<.001$ vs baseline.

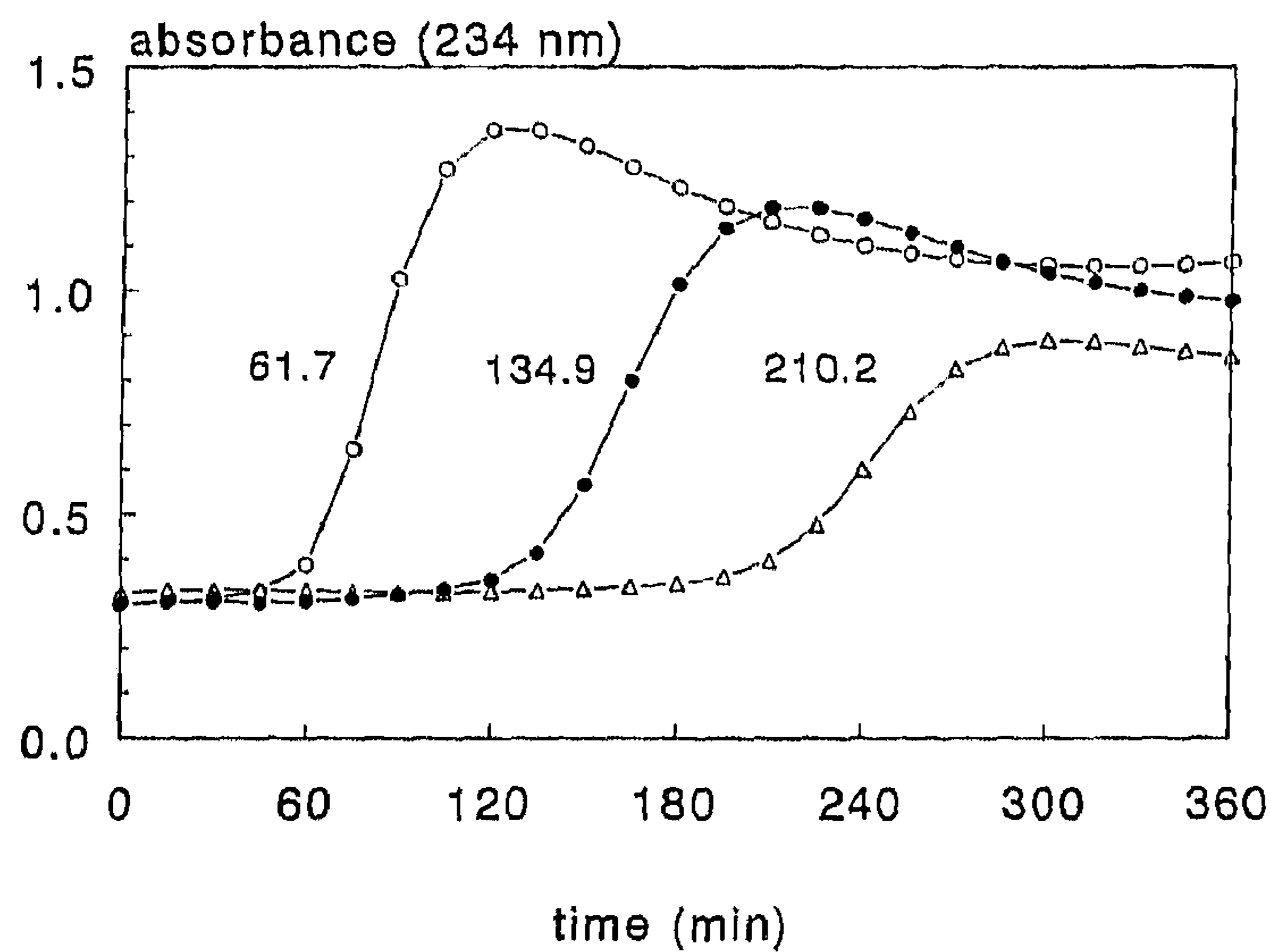


FIG 1. Graph shows typical examples of LDL oxidation curves as determined by continuous measurement of the diene absorbance during copper-induced in vitro oxidation. LDL was isolated from Watanabe heritable hyperlipidemic rabbits at the beginning of the study (●), after 1 month on a linoleic acid-enriched diet (○), and after 1 month on an oleic acid-enriched diet (△). Lag times of the curves are indicated. Effects of the dietary interventions on oxidation rate (slope of the curve) and on the extent of the oxidation (maximal diene absorbance) are clearly shown.

effective than the Oleic diet in the first 4 months of the study period (lag time of LDL at 4 months on the Oleic+E diet was 316.3 ± 73.7 minutes), both diets resulted in a similar 140% increase in lag time after 6 months. All differences in lag time between the diet groups were significant ($P < .01$) except for the effect of Oleic versus Oleic+E on lag time after 6 months.

Similar but inverse effects were seen on maximal rate of diene production (Fig 3). At baseline, the mean oxidation rate was 11.2 ± 1.8 nmol \cdot min $^{-1}$ \cdot mg $^{-1}$ LDL protein ($n=32$). The Linoleic diet increased the rate maximally by 46% (after 4 months). In contrast, the Linoleic+E, Oleic, and Oleic+E diets resulted in a decrease in the oxidation rate of 10%, 55%, and 68%, respectively.

Fig 4 shows the effect of the synthetic diets on the third parameter of LDL oxidizability, the total diene production. At baseline, the mean total diene produc-

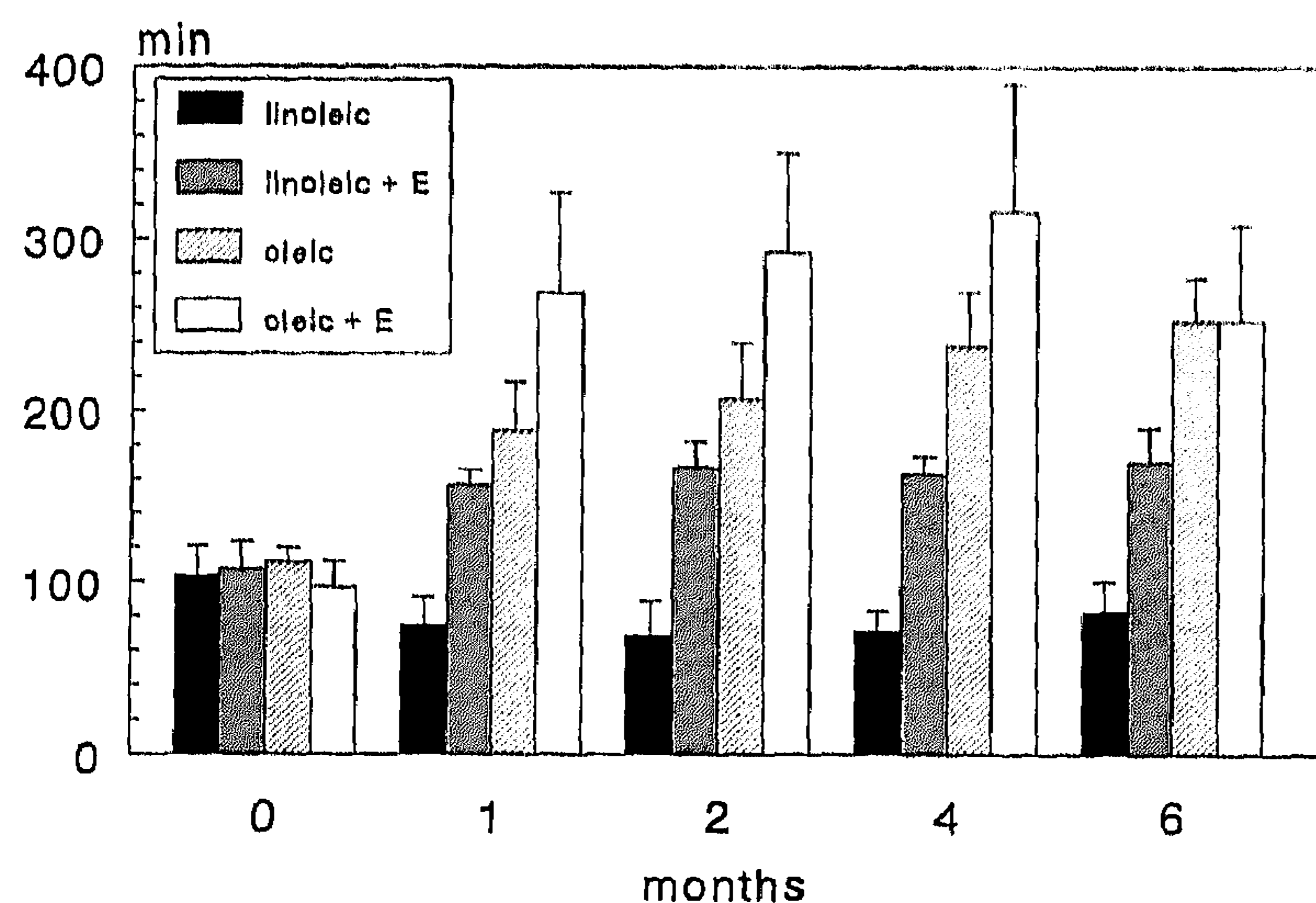


FIG 2. Bar graph shows the effect of antioxidative intervention on the lag time of LDL oxidation. Four groups ($n=8$) of Watanabe heritable hyperlipidemic rabbits were fed a diet enriched in oleic acid, linoleic acid, oleic acid plus vitamin E, or linoleic acid plus vitamin E. At the indicated time points, LDL was isolated and the susceptibility to copper-induced in vitro oxidation was determined.

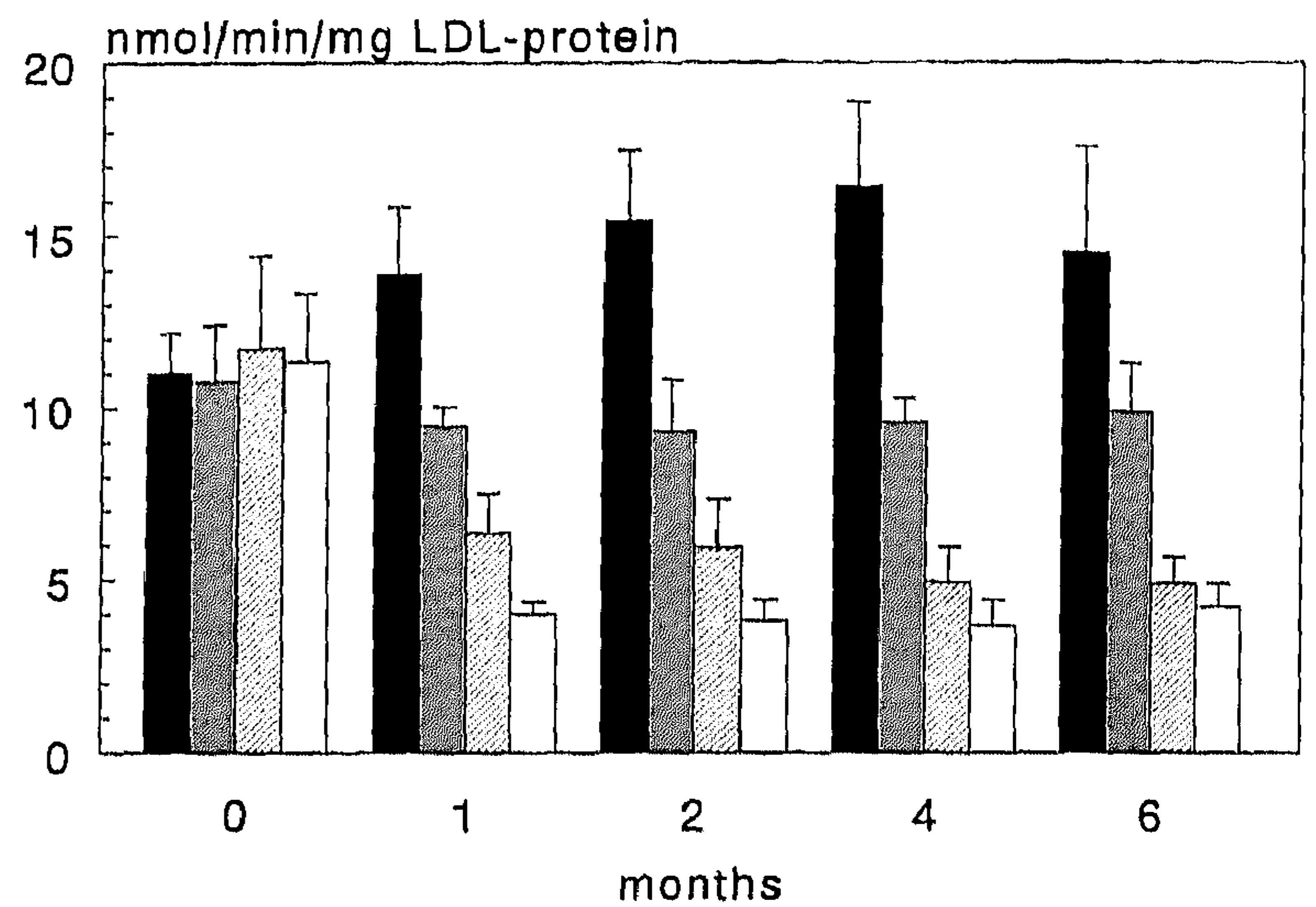


FIG 3. Bar graph shows the effect of antioxidative intervention on maximal oxidation rate of LDL. Four groups ($n=8$) of Watanabe heritable hyperlipidemic rabbits were fed a diet enriched in oleic acid, linoleic acid, oleic acid plus vitamin E, or linoleic acid plus vitamin E. At the indicated time points, LDL was isolated and the susceptibility to copper-induced in vitro oxidation was determined. Inset legend as in Fig 2.

tion was 590.8 ± 52.7 nmol/mg LDL protein ($n=32$). The Oleic diet resulted in a 40% decrease in diene production; the Linoleic diet gave a 10% to 20% increase in diene production. In both cases, vitamin E supplementation had no additional effect on total diene production.

Lipid Peroxidation

As an indication of in vivo lipid peroxidation, TBARS were determined in plasma at baseline and after 6 months on the experimental diets. The mean initial plasma TBARS concentration was 0.73 ± 0.14 nmol/mL. At the end of the study period, TBARS in the Oleic group were significantly ($P = .004$) reduced to 0.56 ± 0.10 nmol/mL compared with baseline. TBARS in the Linoleic, Oleic+E, and Linoleic+E diet groups were 0.86 ± 0.13 , 0.66 ± 0.13 , and 0.62 ± 0.06 nmol/mL, respectively. ANOVA revealed that the differences among the groups after 6 months were significant ($P < .001$). Statistical testing indicated that this difference was caused by the TBARS increase in the Linoleic group.

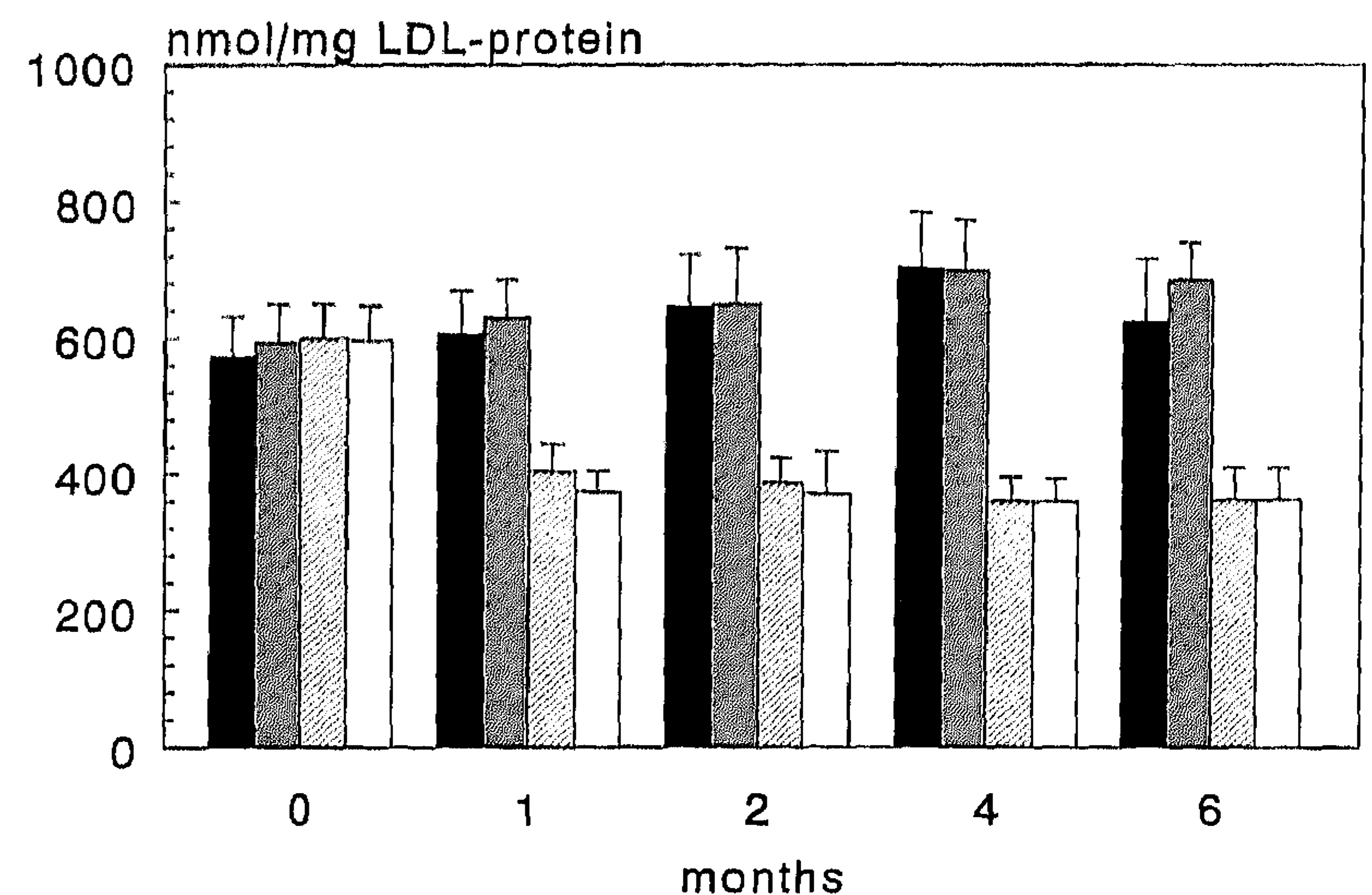


FIG 4. Bar graph shows the effect of antioxidative intervention on maximal diene production during LDL oxidation. Four groups ($n=8$) of Watanabe heritable hyperlipidemic rabbits were fed a diet enriched in oleic acid, linoleic acid, oleic acid plus vitamin E, or linoleic acid plus vitamin E. At the indicated time points, LDL was isolated and the susceptibility to copper-induced in vitro oxidation was determined. Inset legend as in Fig 2.

TABLE 6. Percentage of Aortic Surface Covered With Atherosclerotic Lesions in Four Groups of WHHL Rabbits Fed Different Experimental Diets for 6 Months

	Experimental Diet			
	Oleic	Linoleic	Oleic+E	Linoleic+E
Aortic arch	91±3	89±3	90±3	89±7
Thoracic aorta	77±10	67±25	65±20	62±32
Abdominal aorta	22±14	25±11	24±17	22±16
Total aorta	65±9	59±18	59±14	56±23

Experimental diets are as shown in Table 1. n=8 Watanabe heritable hyperlipidemic (WHHL) rabbits (age 5.0±1.7 months) for each group. Lesions were evaluated after Sudan IV staining of the aorta.

Aortic Atherosclerosis

At the end of the study period, all rabbits were killed, their aortas were removed, and the extent of aortic atherosclerosis was determined. No significant differences were observed in the extent of atherosclerotic lesion formation among the four groups (Table 6). This accounts for the total aorta and the three defined subregions of the aorta.

Discussion

Strongest evidence for the oxidation hypothesis of atherosclerosis came from the probucol studies in WHHL rabbits.^{9,10} Feeding 1% (wt/wt) probucol (0.4 g/kg body weight) to WHHL rabbits for 6 months retarded the progression of atherosclerosis when started at the age of 2 months; this was independent of the cholesterol-lowering effect of probucol.^{9,10} This antiatherogenic effect of 1% probucol feeding was also demonstrated in cholesterol-fed rabbits and monkeys.^{39,40} In one study in cholesterol-fed rabbits, a protective effect of probucol could not be demonstrated.⁴¹ Mao et al⁴² reported the effects of a probucol analogue without a cholesterol-lowering effect in attenuating atherosclerosis in WHHL rabbits. In accordance with the present study, antioxidant therapy reduced the susceptibility of LDL to oxidation but failed to affect atherosclerosis development significantly. Fruebis et al⁴³ recently studied another probucol analogue with an antioxidant potency that in vitro was equal to that of probucol. The bioavailability of the probucol analogue was much greater than that of probucol. When this analogue was given at 0.05% (wt/wt) to WHHL rabbits, similar plasma levels were achieved as with 1% (wt/wt) probucol. Despite these similar plasma levels, lesion development was not affected by treatment with the analogue, whereas probucol slowed lesion progression by almost 50%. These studies with probucol analogues strongly suggest that the antiatherogenic effect of probucol is probably less related to its antioxidant properties than was initially believed and that other biological effects contribute to its antiatherogenic potential.

The present study differs in several aspects from earlier reports that showed an antiatherogenic effect of antioxidant therapy. In most animal experiments, the antioxidant dosages applied, usually in the range of 0.5% to 1.0% (wt/wt), are unrealistic for evaluation in humans.^{9,10,44} It is obvious that the efficacy of lower doses should preferably be evaluated in combination with other measures, such as an optimal composition of the fatty acids in the diet. Therefore, we evaluated in the present study in WHHL rabbits the efficacy of 0.025%

(wt/wt) of vitamin E in the food, which corresponds to a daily dose of 10 mg/kg body weight. The rationale for choosing vitamin E was that in WHHL rabbits, this natural product in a dose of 0.025% was at least as effective as probucol in decreasing the susceptibility of LDL to oxidation in vitro.⁴⁵ As an additional preventive measure, we evaluated the exchange of linoleic acid with oleic acid. For maximal response and discriminating power, we enhanced the amount of fat in the diet from 3% to 10%. On this diet, total plasma cholesterol did not show a systematic difference compared with the basal diet, whereas plasma triglycerides decreased approximately 40%. This decrease probably induced a shift of the apolipoprotein B-100-containing lipoproteins toward a lower density range accompanied by increased concentrations in the VLDL+IDL fraction and a decrease in LDL cholesterol (Table 2). In the present study, we confirmed the HDL cholesterol sparing effect of oleic acid versus linoleic acid as observed previously in humans.²²

It appeared that three of the four diets—the linoleic acid-enriched diet with additional vitamin E and the oleic acid-enriched diets with and without additional vitamin E—resulted in an increased resistance to in vitro oxidation; the linoleic acid-enriched diet without vitamin E supplementation showed a decreased resistance against oxidation. The improved resistance of LDL against oxidation was clear not only from an increased lag time but also from a decreased maximal oxidation rate. These are both known to be beneficially influenced by an increased vitamin E content⁴⁵ and an increased ratio of oleic acid to linoleic acid content in LDL.³³ Reduced oxidizability is achieved not only by delaying the onset of oxidation but also by reducing the amount of available substrate for oxidation. The latter is reflected in the decreased amounts of dienes produced in the LDL of the oleic acid-supplemented animals. However, despite the fourfold difference in lag time and oxidation rate and the twofold difference in total diene production, we failed to observe any difference in the aortic lesion surface after 6 months of intervention with these diets. We found similar results recently when we compared antioxidant treatment in three groups of WHHL rabbits.⁴⁵ Two groups were treated with low doses of either vitamin E or probucol; the third group acted as control. Despite significant reductions in the susceptibility of LDL to oxidation, antioxidant treatment did not influence atherosclerosis development compared with the control group. From these results, it is clear that many more factors determine the outcome of atherosclerosis intervention studies by antioxidants, especially

when physiological dosages are administered. One very important factor is the age at which the prevention is started. For a realistic evaluation, we deliberately initiated intervention in WHHL rabbits of approximately 5 months of age. Another important factor is the magnitude of the plasma cholesterol concentration in the WHHL rabbits: the concentrations in our rabbits were almost twofold higher than reported in the other two studies.^{9,10} At these concentrations, plasma TBARS were elevated compared with the levels in healthy human volunteers and NZW rabbits (P.N.M.D., unpublished observations), indicating significantly increased lipid-peroxidized lipoproteins in the circulation of WHHL rabbits, in agreement with previous results.⁴⁶ At these high serum cholesterol concentrations, a successful intervention, especially when applied in adult rabbits at a physiological antioxidant concentration, probably needs a duration of more than 6 months, if not several years. It could also be that atherosclerosis is attenuated only when antioxidants are given in relatively high amounts and that in the present study, the degree of antioxidative protection was insufficient to influence atherogenesis. Fruebis et al⁴³ suggested that there is a threshold level of protection that would represent the minimum necessary to exert an antiatherogenic effect. In this context, they mentioned a lag time of more than 400 minutes. Interestingly, such an increase was not achieved in our study. Of course, additional research is needed to test this hypothesis.

Given the positive results concerning retardation of atherosclerosis regression in WHHL rabbits after partial ileal bypass surgery⁴⁷ or after treatment with 3-hydroxy-3-methylglutaryl coenzyme A inhibitors,⁴⁸ it is obvious that normalization of plasma lipids, especially of cholesterol, remains the first choice in a program preventing atherosclerosis. This is especially true because polyunsaturated fatty acids, despite their increased oxidizability in vitro and in vivo, are effective in preventing atherosclerosis²⁷ and coronary heart disease.⁴⁹ From this study, it is obvious that the antioxidation hypothesis needs adaptation concerning the quantitative importance of the contributing factors.

Acknowledgments

This work was supported by a grant from the Nijmegen University Research Fund (UOP 1990-4002). We thank Anneke Hijmans, Pieter van Heijst, and Janine Vogelaar for their skillful technical assistance and Jeroen van de Laak for his help with the Kontro-Vidas^{plus} system. Unilever Research Laboratory, Vlaardingen, the Netherlands, provided the experimental diets.

References

- Steinberg D, Parthasarathy S, Khoo JC, Witztum JL. Beyond cholesterol: modifications of low-density lipoprotein that increase its atherogenicity. *N Engl J Med*. 1989;320:915-924.
- Witztum JL, Steinberg D. Role of oxidized low-density lipoprotein in atherogenesis. *J Clin Invest*. 1991;88:1785-1792.
- Haberland ME, Fong D, Cheng L. Malondialdehyde-altered protein occurs in atheroma of Watanabe heritable hyperlipidemic rabbits. *Science*. 1988;241:215-218.
- Palinski W, Ylä-Herttuala S, Rosenfeld ME, Butler SW, Socher SA, Parthasarathy S, Curtiss LK, Witztum JL. Antisera and monoclonal antibodies specific for epitopes generated during oxidative modification of LDL. *Arteriosclerosis*. 1990;10:325-335.
- Ylä-Herttuala S, Palinski W, Rosenfeld ME, Parthasarathy S, Carew TE, Butler S, Witztum JL, Steinberg D. Evidence for the presence of oxidatively modified low-density lipoprotein in atherosclerotic lesions of rabbit and man. *J Clin Invest*. 1989;84:1086-1095.
- Palinski W, Rosenfeld ME, Ylä-Herttuala S, Gurtner GC, Socher SS, Butler SW, Parthasarathy S, Carew TE, Steinberg D, Witztum JL. Low-density lipoprotein undergoes oxidative modification in vivo. *Proc Natl Acad Sci U S A*. 1989;86:1372-1376.
- Hoff HF, O'Neil J. Lesion-derived low-density lipoprotein and oxidized low-density lipoprotein share a liability for aggregation, leading to enhanced macrophage degradation. *Arterioscler Thromb*. 1991;11:1209-1222.
- Ylä-Herttuala S, Butler S, Picard S, Palinski W, Steinberg D, Witztum JL. Rabbit and human atherosclerotic lesions contain IgG that recognizes MDA-LDL and copper-oxidized LDL. *Arterioscler Thromb*. 1991;11:1426. Abstract.
- Carew TE, Schwenke DC, Steinberg D. Antiatherogenic effect of probucol unrelated to its hypocholesterolemic effect: evidence that antioxidants in vivo can selectively inhibit low-density lipoprotein degradation in macrophage-rich fatty streaks and slow the progression of atherosclerosis in the Watanabe heritable hyperlipidemic rabbit. *Proc Natl Acad Sci U S A*. 1987;84:7725-7729.
- Kita T, Nagano Y, Yokode M, Ishii K, Kume N, Ooshima A, Yoshida H, Kawai C. Probucol prevents the progression of atherosclerosis in Watanabe heritable hyperlipidemic rabbits: an animal model for familial hypercholesterolemia. *Proc Natl Acad Sci U S A*. 1987;84:5928-5931.
- Henriksen T, Mahoney EM, Steinberg D. Enhanced macrophage degradation of low-density lipoprotein previously incubated with cultured endothelial cells: recognition by receptors for acetylated LDL. *Proc Natl Acad Sci U S A*. 1981;78:6499-6503.
- Morel DW, DiCorleto PE, Chisolm GM. Endothelial and smooth muscle cells alter low-density lipoprotein in vitro by free radical oxidation. *Arteriosclerosis*. 1984;4:357-364.
- Cathcart MK, Morel DW, Chisolm GM. Monocytes and neutrophils oxidize low-density lipoprotein making it cytotoxic. *J Leukoc Biol*. 1985;38:341-350.
- Steinbrecher UP, Parthasarathy S, Leake DS, Witztum JL, Steinberg D. Modification of low-density lipoprotein by endothelial cells involves lipid peroxidation and degradation of low-density lipoprotein phospholipids. *Proc Natl Acad Sci U S A*. 1984;81:3883-3887.
- Kleinveld HA, Hak-Lemmers HLM, Stalenhoef AFH, Demacker PNM. Improved measurement of low-density lipoprotein susceptibility to copper-induced oxidation: application of a short procedure for isolating low-density lipoprotein. *Clin Chem*. 1992;38:2066-2072.
- Esterbauer H, Gebicki J, Puhl H, Jürgens G. The role of lipid peroxidation and antioxidants in oxidative modification of LDL. *Free Radic Biol Med*. 1992;13:341-390.
- Esterbauer H, Dieber-Rotheneder M, Striegl G, Waeg G. Role of vitamin E in preventing the oxidation of low-density lipoprotein. *Am J Clin Nutr*. 1991;53:314S-321S.
- Babiy AV, Gebicki JM, Sullivan DR. Vitamin E content and low-density lipoprotein oxidizability induced by free radicals. *Atherosclerosis*. 1990;81:175-182.
- Lowering blood cholesterol to prevent heart disease. *Arteriosclerosis*. 1985;5:404-412. NIH Consensus Development Conference Statement.
- Mattson FH, Grundy SM. Comparison of effects of dietary saturated, monounsaturated, and polyunsaturated fatty acids on plasma lipids and lipoproteins in man. *J Lipid Res*. 1985;26:194-202.
- Grundy SM, Denke MA. Dietary influences on serum lipids and lipoproteins. *J Lipid Res*. 1990;31:1149-1172.
- Mensink RP, Katan MB. Effects of a diet enriched with monounsaturated or polyunsaturated fatty acids on levels of low density and high density lipoprotein cholesterol in healthy women and men. *N Engl J Med*. 1989;321:436-441.
- Mensink RP, Katan MB. Effect of dietary fatty acids on serum lipids and lipoproteins: a meta-analysis of 27 trials. *Arterioscler Thromb*. 1992;12:911-919.
- Grundy SM. Comparison of monounsaturated fatty acids and carbohydrates for lowering plasma cholesterol. *N Engl J Med*. 1986;314:745-748.
- Reaven P, Parthasarathy S, Grasse BJ, Miller E, Steinberg D, Witztum JL. Effects of oleate-rich and linoleate-rich diets on the susceptibility of low density lipoprotein to oxidative modification in mildly hypercholesterolemic subjects. *J Clin Invest*. 1993; 91:668-676.
- Grundy SM, Florentin L, Nix P, Whelan MF. Comparison of monounsaturated fatty acids and carbohydrates for reducing raised levels of plasma cholesterol in man. *Am J Clin Nutr*. 1988;47:965-969.
- Wolfe MS, Sawyer JK, Morgan TM, Bullock BC, Rudel LL. Dietary polyunsaturated fat decreases coronary artery atherosclerosis in a

- pediatric-aged population of African Green Monkeys. *Arterioscler Thromb.* 1994;14:587-597.
28. Parks JS, Kaduck-Sawyer J, Bullock BC, Rudell LL. Effect of dietary fish oil on coronary artery and aortic atherosclerosis in African Green Monkeys. *Arteriosclerosis.* 1990;10:1102-1112.
 29. Carr TP, Sawyer JK, Rudel LL. Dietary monounsaturated fat protects against coronary atherosclerosis in African Green Monkeys. *Circulation.* 1993; 88:I-564. Abstract.
 30. Parthasarathy S, Khoo JC, Miller E, Barnett J, Witztum JL, Steinberg D. Low density lipoprotein rich in oleic acid is protected against oxidative modification: implications for dietary prevention of atherosclerosis. *Proc Natl Acad Sci U S A.* 1990;87:3894-3898.
 31. Reaven P, Parthasarathy S, Grasse BJ, Miller E, Almazan F, Mattson FH, Khoo JC, Steinberg D, Witztum JL. Feasibility of using an oleate-rich diet to reduce the susceptibility of low-density lipoprotein to oxidative modification in humans. *Am J Clin Nutr.* 1991;54:701-706.
 32. Bonanome A, Pagnan A, Biffanti S, Opportuno A, Sorgato F, Dorella M, Maiorino M, Ursini F. Effect of dietary monounsaturated and polyunsaturated fatty acids on the susceptibility of plasma low density lipoproteins to oxidative modification. *Arterioscler Thromb.* 1992;12:529-533.
 33. Kleinvelde HA, Naber AHJ, Stalenhoef AFH, Demacker PNM. Oxidation resistance, oxidation rate, and extent of oxidation depend on the ratio of oleic acid content to linoleic acid content: studies in vitamin E deficient subjects. *Free Radic Biol Med.* 1993;15:273-280.
 34. Conti M, Moraud PC, Levillain P, Lemonnier A. Improved fluorometric determination of malondialdehyde. *Clin Chem.* 1991; 37:1273-1275.
 35. Lowry OH, Rosebrough NJ, Farr AL, Randall RJ. Protein measurement with the Folin phenol reagent. *J Biol Chem.* 1951; 193:265-275.
 36. Demacker PNM, Hijmans AG, Vos-Janssen HE, van 't Laar A, Jansen AP. A study of the use of polyethylene glycol in estimating cholesterol in high density lipoprotein. *Clin Chem.* 1980; 26:1775-1779.
 37. Havel RJ, Eder HA, Bragdon JH. The distribution and chemical composition of ultracentrifugally separated lipoproteins in human serum. *J Clin Invest.* 1955;34:1345-1353.
 38. De Graaf J, Hak-Lemmers HLM, Hectors MPC, Demacker PNM, Hendriks JCM, Stalenhoef AFH. Enhanced susceptibility to in vitro oxidation of the dense low density lipoprotein subfraction in healthy subjects. *Arterioscler Thromb.* 1991;11:298-306.
 39. Kritchevsky D, Kim HK, Tepper SA. Influence of 4,4'-(isopropylidenedithio)-bis(2,6-di-t-butylphenol) (DH-581) on experimental atherosclerosis in rabbits. *Proc Soc Exp Biol Med.* 1971;136:1216-1221.
 40. Wissler RW, Visselinovitch D. Combined effects of cholestyramine and probucol on regression of atherosclerosis in Rhesus monkey aortas. *Appl Pathol.* 1983;1:89-96.
 41. Stein Y, Stein O, Delplanque B, Fesmire JD, Lee DM, Alaupovic P. Lack of effect of probucol on atheroma formation in cholesterol fed rabbits kept at comparable plasma cholesterol levels. *Atherosclerosis.* 1989;75:145-155.
 42. Mao SJT, Yates MT, Parker A, Chi EM, Jackson RL. Attenuation of atherosclerosis in a modified strain of hypercholesterolemic Watanabe rabbits with use of a probucol analogue (MDL 29,311) that does not lower serum cholesterol. *Arterioscler Thromb.* 1991;11:1266-1275.
 43. Fruebis J, Steinberg D, Dresel HA, Carew TE. A comparison of the antiatherogenic effects of probucol and of a structural analogue of probucol in low density lipoprotein receptor-deficient rabbits. *J Clin Invest.* 1994;94:392-398.
 44. Williams RJ, Motteram JM, Sharp CH, Gallagher PJ. Dietary vitamin E and the attenuation of early lesion development in modified Watanabe rabbits. *Atherosclerosis.* 1992;94:153-159.
 45. Kleinvelde HA, Demacker PNM, Stalenhoef AFH. Comparative study on the effect of low-dose vitamin E and probucol on the susceptibility of low-density lipoprotein to oxidation and the progression of atherosclerosis in Watanabe heritable hyperlipidemic rabbits. *Arterioscler Thromb.* 1994;14:1386-1391.
 46. Demacker PNM, Hijmans AGM, Kleinvelde HA, Stalenhoef AFH. Indications for the presence of circulating peroxidized low density lipoproteins in WHHL rabbits treated with antioxidants. *Atherosclerosis.* 1993;102:69-77.
 47. van Niekerk JLM, Demacker PNM, Hendriks T, de Boer HHM. Partial ileal bypass inhibits atherosclerosis in WHHL rabbits. *Atherosclerosis.* 1983;48:243-252.
 48. Kroon AA, Stalenhoef AFH, Buikema H, Demacker PNM, de Wilde PCM, Leijten PA, van Gilst WH. The effect of cholesterol reduction on the endothelial function and progression of atherosclerosis in WHHL rabbits. *Atherosclerosis.* 1993;103:221-230.
 49. Miettinen M, Karvonen MJ, Turpeinen O, Elosuo R, Paavilainen E. Effect of cholesterol-lowering diet on mortality from coronary heart disease and other causes. *Lancet.* 1972;2:835-838.