

# Effect of internal cleavage site mutations in human immunodeficiency virus type 1 capsid protein on its structure and function

Ferenc Tóth, János Kádas, János András Mótyán and József Tózsér

Department of Biochemistry and Molecular Biology, Faculty of Medicine, University of Debrecen, Hungary

## Keywords

capsid protein; circular dichroism spectroscopy; cyclophilin A; HIV-1; human immunodeficiency virus type 1; protease, mutagenesis

## Correspondence

J. Tózsér, Department of Biochemistry and Molecular Biology, Faculty of Medicine, University of Debrecen, H-4012 Debrecen, POB 6. Debrecen, Hungary  
Tel/Fax: +(36) 52/416 432  
E-mail: [tozser@med.unideb.hu](mailto:tozser@med.unideb.hu)

Enzymes: HIV-1 protease: [EC 3.4.23.16](#)

(Received 11 March 2016, revised 12 May 2016, accepted 26 May 2016)

doi:10.1002/2211-5463.12094

The capsid protein of the human immunodeficiency virus type 1 has been found to be a substrate of the retroviral protease *in vitro*, and its processing was predicted to be strongly dependent on a pH-induced conformational change. Several protease cleavage sites have been identified within the capsid protein, but the importance of its cleavage by the viral protease at the early phase of infection is controversial. To confirm the relevance of this process, we aimed to design, produce, and characterize mutant capsid proteins, in which the protein susceptibility toward HIV-1 protease is altered without affecting other steps of the viral life cycle. Our results indicate that while the introduced mutations changed the cleavage rate at the mutated sites of the capsid protein by HIV-1 protease, some of them caused only negligible or moderate structural changes (A78V, L189F, and L189I). However, the effects of other mutations (W23A, A77P, and L189P) were dramatic, as assessed by secondary structure determination or cyclophilin A-binding assay. Based on our observations, the L189F mutant capsid remains structurally and functionally unchanged and may therefore be the best candidate for use in studies aimed at better understanding the role of the protease in the early postentry events of viral infection or retrovirus-mediated gene transduction.

HIV-1 is a member of the retrovirus family and is a causative agent of acquired immunodeficiency syndrome. The advance in highly active antiretroviral therapy (HAART) had dramatically changed the outcome of disease progression; however, a definitive cure is not yet available. The total number of people living with HIV infection is estimated to be over 36 million worldwide, according to the 2014 report of UNAIDS on the global AIDS epidemic. On the other hand, HIV-based Vesicular stomatitis virus-pseudotyped self-inactivating vectors are among the most frequently utilized in gene therapy trials.

In mature virions, approximately 1500 capsid (CA) monomers form a conical structure—called the core—

which contains the viral genome, some viral (nucleo-capsid, reverse transcriptase, integrase, Vpr, and p6) and cellular (cyclophilin A, APOBEC3G) proteins, that introduce the viral genome into target cells [1]. Earlier results strongly suggested that appropriate stability of the core also had a main role in HIV-1 infection [2–7] influencing the decapsidation process in the early phase where the exact identity of the factors involved is still not fully resolved. Besides the presence of various viral proteins, the protease (PR) is also part of the core [8] and, therefore, it might contribute to the viral infectivity by further processing viral proteins or by cleaving cellular ones [9]. At the late phase of the viral life cycle, proteolytic cleavage of Gag and

## Abbreviations

CA, capsid protein; CypA, Cyclophilin A; PR, protease.

Gag-Pol polyproteins is essential for the production of the mature, infectious virus [10]. *In vitro* experiment with the cores of another lentivirus; the equine infectious anemia virus, showed that the viral protease can cleave the nucleocapsid protein into smaller fragments [11] leading to the suggestion of an early phase role for the PR. In previous studies it was established that proteins of the viral core (CA, NC) are substrates of the viral protease *in vitro* [12–14], while other studies identified over 30 cellular proteins that could be target of the PR as summarized in Wagner *et al.* [15]. Nevertheless, PR inhibition studies provided controversial results, some showing an inhibitory effect on the early phase [16–19], while others did not find such effect [20,21]. HIV-1 entry occurs in most cases by direct fusion, but the endocytotic route could make a substantial contribution to infectivity depending on the virus isolate and cell type [22–24]. Although the PR has been shown to be able to process proteins at the neutral pH of the cytoplasm, as the pH optimum of the PR is acidic, the acidic pH of the lysosome is more favorable for its proteolytic action.

The capsid protein of HIV-1 is composed of 231 amino acid residues, and consists of two independent domains: an N-terminal core domain (residues 1–145) [25] and a C-terminal dimerization domain (residues 151–231) [26] that are connected by a short linker region [27]. The C-terminal domain also contains the evolutionarily conserved major homology region (MHR), which is crucial for the maintenance of the structure and interactions with other viral and cellular components [26]. NMR spectroscopic [25] and X-ray crystallographic studies [26] revealed that the domain organization of the HIV-1 CA protein is highly  $\alpha$ -helical. Moreover, circular dichroism spectroscopic (CD) study of a recombinant p24 protein (r-p24) showed that under native conditions, 56% of the protein is folded into  $\alpha$ -helices, 3% into  $\beta$ -sheets, and 20% into turns [28].

Among other viral proteins, the processed CA protein have also been found to be a substrate for the retroviral protease *in vitro*, and its processing is predicted to be dependent on a pH-induced conformational change [12]. Based on N-terminal sequencing as well as MS identification of the fragments of recombinant CA separated by SDS/PAGE, two major CA cleavage sites were identified: Ala77/Ala78 and Leu189/Leu190 [12]. In addition to these sites, another study had identified additional cleavage sites: Ala22/Trp23, Gly116/Trp117, and Ala204/Leu205 [14] (Fig. 1). All these cleavage sites are located outside the MHR region.

Over the past decade, genome-wide siRNA screenings [29,30] and proteomic analyses [31] identified

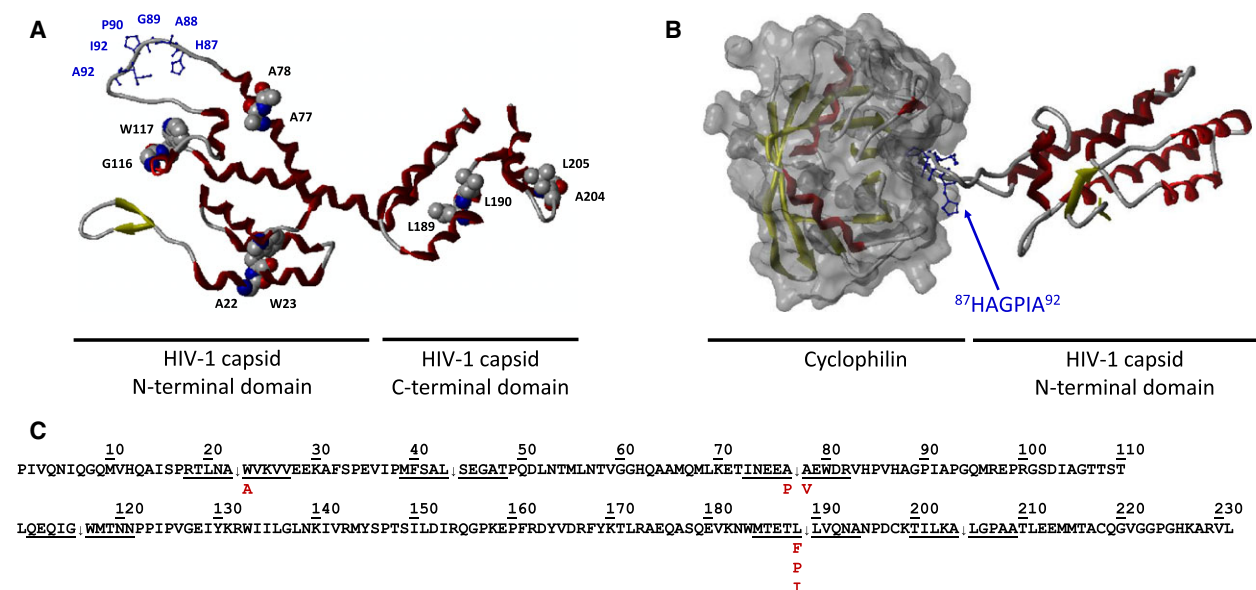
several cellular proteins which are important for HIV-1 infection. Some of these factors such as E3 SUMO-protein ligase (RanBP2), a nuclear pore complex protein (NUP153), transportin-3 (TNPO3), or the cleavage and polyadenylation specificity factor subunit 6 (CPSF6) have been found to be as interaction partners of the CA protein [32,33]. One of the previously identified host-derived cofactors, peptidyl-prolyl isomerase cyclophilin A (CypA) has been shown to be able to bind the Gag protein of HIV-1 and some other lentiviruses [34–36]. CypA has been shown to be incorporated into HIV-1 virions, and its incorporation was found to be essential for viral infectivity [37–39], however, further studies showed that endogenous CypA present in the target cells is more important for viral infectivity [40–42]. The CypA binds to the CypA-binding loop of the CA (<sup>87</sup>HAGPIA<sup>92</sup> in the N-terminal domain) (Fig. 1). The precise role of CypA in the early phase of infection is still unclear, binding of CypA to CA can be inhibited by the drug cyclosporin A (CsA) or by mutagenesis of the crucial amino acid residues of the binding regions in either one or both proteins [35,41]. Both the CsA inhibitor and mutagenesis impair the infection process in certain cell types, in a step that exists before or during reverse transcription.

The goal of the present work was based on previous specificity studies performed by us and others, to select mutations and introduce them into the major internal cleavage sites of CA, and to study how these cleavage site modifications affect the protein structure, impairing or enhancing its proteolytic susceptibility. The aim was to identify appropriate candidate mutations that can be used to clarify the potential role of CA processing at the early phase of viral infection, especially in circumstances when the virus or viral-based vectors are utilizing the receptor-mediated endocytotic route for infection, where the pH and the CA structure is more favorable for the proteolytic processing.

## Materials and methods

### Mutagenesis, expression, and purification of recombinant HIV-1 capsid protein

The plasmid bearing the CA protein from HIVIIB isolate with an N-terminal 6-his tag (His<sub>6</sub>-HIVCA) was obtained from Dr. Carol Carter (Department of Molecular Genetics and Microbiology, S.U.N.Y. Stony Brook, USA). Mutations were introduced with the QuikChange Site-Directed Mutagenesis Kit (Stratagene, Agilent Technologies, Santa Clara, CA, USA), using the mutagenesis primers (Integrated DNA Technologies, Coralville, IA, USA) listed in Table S1, Supporting Information. The sequences were



**Fig. 1.** Structure of wild-type HIV-1 capsid protein and its complex with cyclophilin. (A) Figure shows the ribbon/tube representation of crystal structures of wild-type HIV-1 capsid protein (3NTE.pdb) (A) and its N-terminal domain bound to cyclophilin A (1AK4.pdb) (B). Residues harboring the proteolytic cleavage sites are indicated by spacefill representation (residues are labeled by black color), while residues of cyclophilin A-binding loop (<sup>87</sup>HAGPIA<sup>92</sup>) by ball-and-stick representation (residues are labeled by blue color). Color code: red,  $\alpha$ -helix; yellow,  $\beta$ -sheet. (C) Sequence of the wild-type CA. Identified cleavage sites are marked with arrows, and introduced amino acid changes are indicated with red letters under the wild-type sequence.

verified by DNA sequencing performed by ABI Prism Dye Terminator Cycle Sequencing Kit and a model 3100-Avant Genetic Analyzer (both from Applied Biosystems, Thermo Fisher Scientific Inc., Waltham, MA, USA). Protein expression in *Escherichia coli* BL21(DE3) cells (Invitrogen, Thermo Fisher Scientific Inc., Waltham, MA, USA) was induced by the addition of 1 mM IPTG to the cultures followed by incubation at 37 °C for 3 h. Bacterial cells were suspended in lysis buffer (10 mM Tris-HCl, 150 mM NaCl, 1 mM PMSF, pH 8.0) and then disrupted by sonication. The insoluble fraction was collected by centrifugation at 17 500 *g* at 4 °C for 20 min, then washed with the same buffer and centrifuged again at the same conditions. The pelleted fraction was resuspended in denaturation buffer (20 mM NaH<sub>2</sub>PO<sub>4</sub>, 500 mM NaCl, 0.1% TritonX-100, 40 mM imidazole, 8 M urea, pH 7.5). After sonication, the solution was centrifuged at 17 500 *g* at 4 °C for 25 min, and then the supernatant was filtered through a 0.22- $\mu$ m pore size syringe filter (Merck, Millipore, Darmstadt, Germany) and applied to the Ni-nitrilotriacetic acid Superflow affinity resin (Qiagen, Hilden, Germany) equilibrated in CA-binding buffer (20 mM NaH<sub>2</sub>PO<sub>4</sub>, 500 mM NaCl, 0.1% TritonX-100, 40 mM imidazole, pH 7.5). After consecutive, extensive washing steps using this binding buffer the recombinant protein bound to the resin was eluted with CA elution buffer (20 mM NaH<sub>2</sub>PO<sub>4</sub>, 500 mM NaCl, 500 mM imidazole, pH 7.5). The purified protein was dialyzed overnight at 4 °C against MQ water, and then concentrated

with a Concentrator plus lyophilizator (Eppendorf, Hamburg, Germany). The concentrated protein was fractionated by gel filtration on Superose 12 10/300 GL column (GE Healthcare, Little Chalfont, United Kingdom) equilibrated with equilibration buffer (50 mM NaH<sub>2</sub>PO<sub>4</sub>, 0.15 M NaCl, pH 7.0), separation was performed at a flow rate of 1 mL·min<sup>-1</sup> at room temperature. Fractions with the proper purity were dialyzed and concentrated again with the same method mentioned above. The concentration of the clarified proteins were measured based on their A280 values by NanoDrop equipment (Thermo Scientific). The purity of samples was verified by SDS/PAGE using 16% polyacrylamide gels.

### Construction of pGEX-4T-3-CypA expression vector

The cyclophilin A coding region was amplified from the PPIA (NM\_021130) human cDNA ORF Clone (Origene, Rockville, MD, USA) using Phusion High-Fidelity DNA polymerase (New England BioLabs, Beverly, MA, USA) with primer sets 5'-GAGGGATCCATGGTCAACCCACCGTGTTCTTCG-3' (forward) and 5'-GCGACCGCGCCCAATTATTTCGAGTTGTCCACAGTCAG-3' (reverse). The forward and reverse primers harbored a recognition sites of *Bam*HI (underlined) and *Not*I restriction endonucleases, respectively. The PCR reaction was performed as it was described before [43]. After the cleavage of PCR product by

*Bam*HI and *Not*I, it was ligated into pGEX-4T-3 plasmid (Addgene, Cambridge, MA, USA).

### Expression and purification of CypA-GST fusion protein

The GST-CypA coding plasmid was transformed into *E. coli* BL21(DE3) cells (Invitrogen) and the expression was induced by the addition of 0.1 mM IPTG to the cultures, and incubated at 37 °C for 3 h. After harvesting the cells by centrifugation the pellets were treated as described previously [43]. The clear lysate of cells was then applied to a Bio-Scale™ Mini Profinity™ GST cartridge (BIO-RAD, Hercules, CA, USA) equilibrated in CypA-binding buffer (10 mM NaH<sub>2</sub>PO<sub>4</sub>, 150 mM NaCl, 5 mM EDTA, pH 7.4). After consecutive, extensive washing steps with this buffer the recombinant protein bound to the resin was eluted with CypA elution buffer (20 mM glutathione, 100 mM Tris-HCl, 5 mM EDTA, pH 8.0). The purified protein was dialyzed overnight at 4 °C, against MQ water, and then concentrated with a lyophilizator. Concentrated proteins were dissolved in MQ water again. The concentration of the clarified proteins were measured based on their A280 values by a NanoDrop equipment (Thermo Scientific). The purity of samples was verified by SDS/PAGE using 16% polyacrylamide gels.

### Expression and purification of the recombinant HIV-1 protease

The construction of HIV-1 PR coding region containing five stabilizing mutations (Q7K, L33I, L63I, C67A, and C95A) was described previously [44,45]. The plasmid coding for this protease was a kind gift of Dr. John M. Louis (Laboratory of Chemical Physics, NIDDK, NIH).

The HIV-1 PR was expressed in *E. coli* BL21(DE3) cells (Invitrogen). Cells were grown at 37 °C up to an absorbance of 0.6–0.8 at 600 nm, in Luria–Bertani medium containing 100 µg·mL<sup>-1</sup> ampicillin, and induced for expression with 1 mM IPTG for 3 h. Cells were harvested by centrifugation at 6000 *g* at 4 °C for 20 min. After removal of the supernatant, the cell pellet was treated as described previously [46]. Briefly, cells were suspended in 20 volume of buffer A (50 mM Tris, 10 mM EDTA, pH 8.2), and lysed in the presence of 100 µg·mL<sup>-1</sup> lysosyme by sonication on ice. The lysate was centrifuged at 20 000 *g* at 4 °C for 20 min, the pellet was resuspended in buffer B (buffer A containing 2 M guanidine-HCl and 1% Triton X-100) followed by a repeated centrifugation. Pelleted inclusion bodies were suspended in buffer A and centrifuged again. The final pellet was dissolved in buffer C (50 mM Tris, 5 mM EDTA, 7.5 M guanidine-HCl, pH 8.0) and filtered through 0.22-µm pore size syringe filter (Millipore). Samples were applied to a Superose 12 10/300 GL column (GE Healthcare)

equilibrated in buffer D (50 mM Tris, 4 M guanidine-HCl, 5 mM EDTA, pH 8), separation was performed at a flow rate of 0.5 mL·min<sup>-1</sup> at room temperature. Peak fractions were pooled and subjected to reversed-phase HPLC on a POROS 20 R2 column (Applied Biosystems). Purity of selected fractions was assessed by SDS/PAGE using 16% polyacrylamide gels. The protein was folded by dialysis into 0.05 M formic acid at pH 2.8 followed by a dialysis using 0.05 M sodium acetate buffer, pH 5.0. Protein concentration was measured based on its A280 value by a NanoDrop equipment (Thermo Scientific).

### Prediction of effects of mutations

Secondary structure prediction was performed using SOPMA secondary structure prediction server [47]. Effects of the mutations on protein stability were predicted by the Site Directed Mutator (SDM) server [48] using the crystal structure of the wild-type full-length HIV-1 capsid protein (PDB code: 3NTE) [49]. Figures were prepared using Sybyl program package (Tripos Inc., St. Louis, MO, USA) run on Silicon Graphics Fuel workstations (Silicon Graphics International, Fremont, CA, USA).

### Circular dichroism spectroscopy

Circular dichroism spectra were recorded on a Jasco-810 spectropolarimeter at room temperature in 10 mM sodium phosphate buffer (pH 7.5). CD deconvolutions were obtained using the CDSSTR analysis program [50–52], kindly provided by Dichroweb [53,54].

### Proteolytic digestion of recombinant CA proteins by HIV-1 protease

Recombinant CA proteins were incubated with PR at PR:CA ratio of 1:20 at pH 5.5. Reaction mixture containing recombinant His<sub>6</sub>-tagged CA protein (10 µM final concentration) was incubated with recombinant HIV-1 PR (0.5 µM final concentration) in PR reaction buffer (100 mM sodium acetate, 1 mM DTT, 1 mM EDTA, 150 mM NaCl, pH 5.5), as described previously [12]. Briefly, after incubation at 37 °C for 4 h, reactions were stopped by the addition of an equal volume of 2X tricine-SDS sample buffer containing β-mercaptoethanol, and by heating at 95 °C for 10 min, and the samples were analyzed using 16% gradient SDS/PAGE tricine-buffered gels (Invitrogen). In case of samples analyzed later by mass spectrometry the reactions were stopped by the addition of an equal volume of formic acid.

### Mass spectrometry

Before the measurements the samples were purified by Zip-Tip pipette tips loaded by C18 resin (Millipore) to remove

the salt components of the HIV-1 PR reaction buffer. The (MALDI-TOF MS) analysis of the CA fragments was performed by a Voyager-DETM PRO MALDI-TOF mass spectrometer (Applied Biosystems); sinapinic acid was used as matrix. The instrument was used in the linear mode of operation.

### Limited proteolysis by trypsin

Recombinant CA proteins were incubated with trypsin at trypsin:CA ratio of 1:100 at pH 7.5 in a reaction buffer as described previously [55]. Reaction mixtures contained recombinant his-tagged CA protein (10  $\mu$ M final concentration) and trypsin (100 nM final concentration). Samples were incubated at 37 °C for 2 h, reactions were stopped by the addition of an 1/6 volume of 6X SDS sample buffer containing  $\beta$ -mercaptoethanol, and by heating at 95 °C for 10 min. The samples were analyzed using 16% SDS/PAGE gels.

### His<sub>6</sub>-HIVCA pull-down assay

After binding the His<sub>6</sub>-HIVCA protein to the Ni-nitrilotriacetic acid magnetic agarose beads (Qiagen) at 4 °C for 1 h using a PBS supplemented with 20 mM imidazole, 0.05% Tween20, pH 8.0) the mixture was incubated with the purified GST-CypA protein in PBS at 4 °C for 1 h. The non-bound material was washed off and the bound complexes were eluted with a pull-down elution buffer (50 mM NaH<sub>2</sub>PO<sub>4</sub>, 300 mM NaCl, 250 mM imidazole, 0.05% Tween20, pH 8.0), followed by SDS/PAGE using 14% polyacrylamide gels.

### Statistical analysis

Statistical analysis was performed using GraphPad Quick-Cals free web calculator (<http://graphpad.com/quickcalcs/ttest2>) (accessed January 2016).

## Results

### Rationale for the introduced mutations into the CA protein

Cleavage site mutations were based on the known specificity features of HIV-1 PR that have been reviewed previously [56,57]. As both S1- and S1'-binding cavities of HIV-1 PR are large and hydrophobic, it was predicted that mutation of P1'Ala to Val at the Ala77/Ala78 site as well as P1 Leu to Phe at the Leu189/Leu190 cleavage site would enhance proteolysis at these sites. On the other hand, mutations of P1 residues to Pro or Ile at these sites were expected to prevent hydrolysis, as no natural or known artificial

cleavage sites contain these residues at this position. Besides these mutations, we also studied the Trp23Ala mutant. The effect of this mutation has been characterized previously, showing enhanced processing of the CA protein [2]; although the S1'-binding cavity of HIV-1 protease is relatively large, Trp appears to be too bulky to preferably fit into this site.

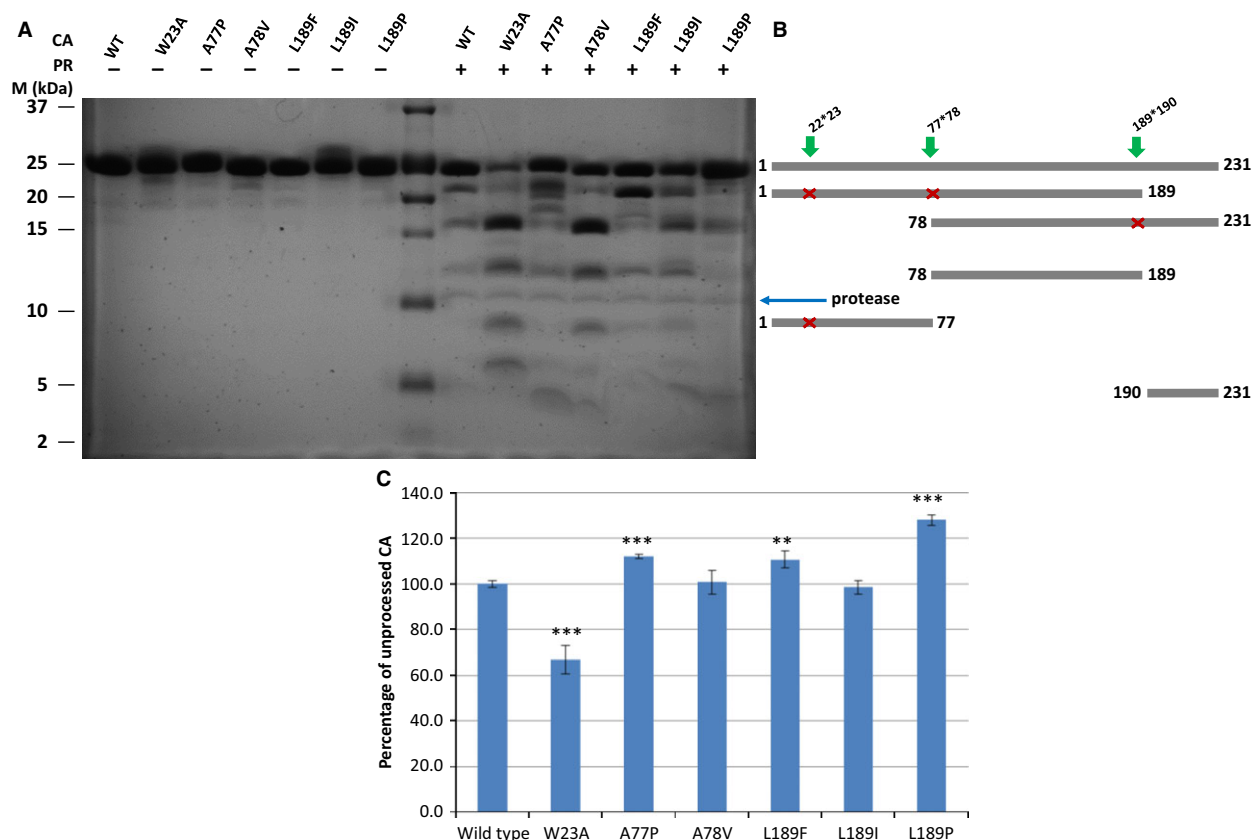
### Cleavage site mutant HIV-1 capsid proteins display altered processing profiles

To define the effects of proteolytic cleavage site mutations on the *in vitro* CA processing, we prepared mutant capsid proteins in which the P1 (A77P, L189F, L189I, and L189P mutants) or the P1' (W23A and A78V mutants) amino acids of the cleavage sites were replaced. The mutant recombinant CA proteins were expressed in *E. coli* and subjected to proteolysis by a purified recombinant wild-type HIV-1 PR (Fig. 2). These cleavages were performed at pH 5.5, which is close to the lysosomal pH as well as to the pH optimum of the HIV-1 PR.

As expected, A77P and L189P amino acid changes inhibited the proteolytic processing at these sites, as we have observed a decrease in the product band intensities or disappearance of the fragments related to these modified cleavage sites. On the other hand, the W23A mutation resulted in the accelerated proteolytic cleavage of the protein, in good agreement with previously published results [2]. The modified cleavage sites became more susceptible to proteolytic cleavage in the case of A78V and L189F mutants, as indicated by the increased amount of the related fragments (78–231 and 1–189, respectively). However, the overall processing of the L189F CA was reduced, and A78V CA did not show significant alteration in its proteolytic susceptibility compared to that of the wild-type (Fig. 2). Surprisingly, L189I mutation did not prevent processing at this site, although P1 Ile has not been found in HIV-1 cleavage sites. This might be due to a one-residue shift of the cleavage site to TETIL/VQNAN to produce a typical type 2 cleavage site [56,57] for HIV-1 PR, we, however, were unable to prove this as none of the respective peptides were recovered in MALDI-TOF experiments (data not shown).

### *In silico* secondary structure analysis of the capsid protein

The introduced mutations could potentially alter the secondary or tertiary structural organization of the CA protein, in addition to the altered cleavage sites,



**Fig. 2.** Cleavage of wild-type and mutant HIV-1 CA proteins by HIV-1 PR. (A) Representative SDS/PAGE of the digested CA proteins. Recombinant CA proteins were incubated with (+) or without (–) HIV-1 PR at 37 °C for 4 h at pH 5.5; then the reaction mixture was analyzed by SDS/PAGE. M denotes the molecular weight marker (Precision Plus Protein Dual Xtra Standard). (B) Schematic representation of proteolytic fragments produced by the proteolytic cleavage. Modified cleavage sites are marked by green arrows and missed cleavages contributing to the appearance of each fragments are represented by red crosses. Only those fragments are indicated, which have already been separated and identified previously [12]. (C) Comparison of unprocessed CA amount after proteolytic digestion. Values were calculated using three independent proteolytic digestion experiments, as described in Materials and methods. Amounts of uncleaved CA after proteolytic cleavage were quantified by scanning the band densities in the gels and were calculated as percentage of total CA proteins (incubated without HIV-1 PR). The percentage of proteolytic cleavage for the wild-type was arbitrarily set at 100%. Error bars represent  $\pm$ SD ( $n = 3$ ). \*\*  $P < 0.01$ , \*\*\*  $P < 0.001$ .

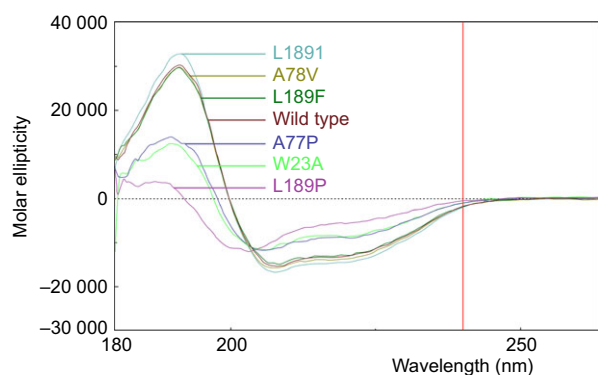
the structural alterations could also be responsible for the observed changes in proteolytic processing.

Effects of mutations on the protein structure were predicted using the SDM server, which calculates a stability score analogous to the free energy difference between a wild-type and mutant protein [48]. The highest values were predicted for the A77P ( $-2.27 \text{ kcal}\cdot\text{mol}^{-1}$ ) and L189P ( $-4.85 \text{ kcal}\cdot\text{mol}^{-1}$ ) mutants, which suggested that these mutations have a highly destabilizing effect on the protein structure and may potentially cause protein malfunction.

The L189I mutation was predicted to be neutral ( $-0.37 \text{ kcal}\cdot\text{mol}^{-1}$ ), while A78V and L189F mutations were predicted to be slightly destabilizing ( $-1.57$  and

$-0.73 \text{ kcal}\cdot\text{mol}^{-1}$ , respectively) and cause only a slight deviation of the secondary structural organization.

Secondary structure prediction did not predict changes for W23A mutation, furthermore, SDM server predicted only slightly destabilizing effect for this mutation, as well. However, while the introduction of W23A mutation was predicted to be neutral from the viewpoint of the conformation of helix I, it was previously published that this residue is buried in the N-terminal domain and contributes to the formation of the hydrophobic core [58]. Therefore, we expected that W23A mutation would alter both the secondary and tertiary structure of CA protein, due to its critical role in stabilization of the protein structure.



**Fig. 3.** Circular dichroic spectra of recombinant HIV-1 CA protein and its mutants in the far-UV region at pH 7.5. The pathlength of cuvette was 0.02 cm.

### Cleavage site mutations affect the secondary structure of HIV-1 capsid protein

To predict the effect of cleavage site mutations on the overall CA structure, we have examined the secondary structure of the proteins using CD spectroscopy. The molecular ellipticities of the spectra of the proteins were examined in the range of 180–300 nm, as indicated in Fig. 3. The spectra of mutant CA proteins were compared to that of the wild-type CA. CD spectra were analyzed by the CDSSTR analysis program; results are summarized in Table 1. These spectra were measured at pH 7.5 in which the CA protein maintains its structural integrity [28,59].

The spectrum of the wild-type CA protein showed positive ellipticity with a maximum at 190 nm, intense negative ellipticity with a distinct minimum at 208 nm, and a shoulder at 220 nm. The crossover point for the spectra was at 200 nm (Fig. 3). The distribution of the secondary structural elements is in good agreement with results published previously for the His<sub>6</sub>-tagged CA at pH 7.5 [25,26,28,55], and also with the predictions made from the amino acid sequence of the wild-type protein (Table 1). The spectra of A78V and L189F mutants showed similar features to that of the

wild-type, indicating that these proteins have the same distribution of secondary structural elements (Table 1). The spectrum of L189I mutant also exhibited similar features with a higher maximum at 191 nm, suggesting that its structure only slightly differs from that of the wild-type protein in its  $\alpha$ -helix ratio (Fig. 3). The spectra of the W23A, A77P, and L189P mutants exhibited several different features compared to that of the wild-type, such as highly reduced positive and negative ellipticity and altered crossover points of the curves, indicating the variable distribution of secondary structures (Fig. 3).

In summary, based on the results of CD, the secondary structure of the A78V, L189F, and L189I mutants show only slight differences and closely resemble that of the wild-type (Table 1). On the other hand, W23A and A77P mutants show more pronounced changes in the percentage of secondary structural elements, the structure of L189P mutant capsid proteins highly deviated from that of the highly  $\alpha$ -helical wild-type (Table 1).

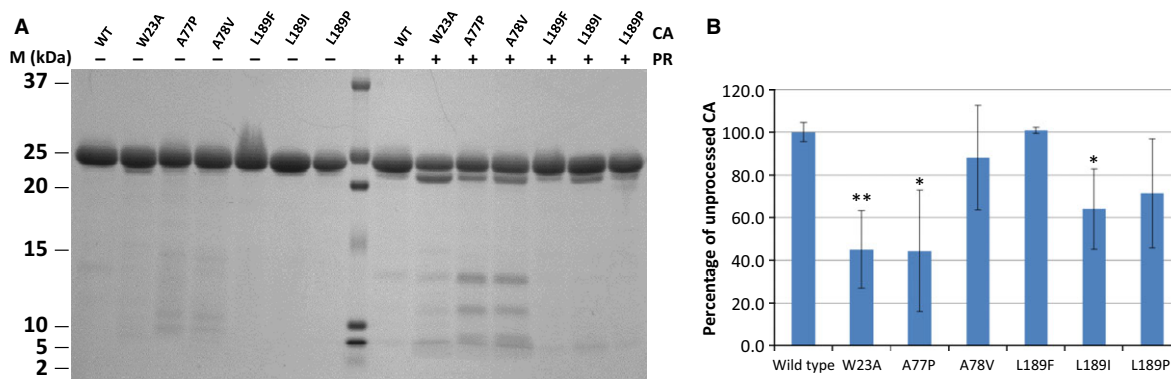
Predicted effects of mutations were generally in good agreement with results obtained from CD measurements. Remarkable alterations predicted for the structures of A77P and L189P mutant capsid proteins were confirmed by CD measurements. Predicted effects of A78V, L189F, and L189I mutations corresponded well with the experimentally determined effects, and while the distribution of secondary structural elements in L189I mutant closely resembles that of the wild-type CA, the A78V and the L189F mutants show only minor differences compared to the wild-type protein.

### Mutant capsid proteins W23A, A77P, and L189I are more sensitive to tryptic digestion, while A78V, L189F, and L189P mutants showed similar tryptic susceptibility to that of the wild-type CA

Previous experiments on HIV-1 CA proteins suggested that regions exposed to tryptic digestion are crucial for protein multimerization, and altered proteolytic

**Table 1.** Secondary structural organization of the wild-type and mutant HIV-1 capsid proteins at pH 7.5. Percentage of secondary structural elements was determined based on the results of circular dichroism spectroscopic analysis. Values are indicated based on the crystal structure of wild-type HIV-1 capsid protein (3NTE.pdb) and the result of secondary structure prediction (SOPMA), as well.

	Crystal structure Wild-type	Sec.struct. prediction Wild-type	CD spectroscopy						
			Wild-type	W23A	A77P	A78V	L189F	L189I	L189P
$\alpha$ -helix	57	52	48	31	31	48	48	53	17
$\beta$ -strand	3	11	12	19	18	11	11	11	27
Turn	10	8	15	20	21	16	16	13	22
Unordered	30	29	25	30	30	25	25	23	34



**Fig. 4.** Limited tryptic digestion of the recombinant CA protein and its mutants. (A) Representative SDS/PAGE of the digested CA proteins. Recombinant CA proteins were incubated with (+) or without (–) trypsin at 37 °C for 2 h at pH 7.5; then the reaction mixture was analyzed by SDS/PAGE. M denotes the molecular weight marker (Precision Plus Protein Dual Xtra Standard). (B) Comparison of unprocessed CA amount after tryptic digestion. Values were calculated using three independent tryptic digestion experiments as described in Materials and methods. Amounts of uncleaved CA after proteolytic cleavage were quantified by scanning the band densities in the gels and were calculated as percentage of total CA proteins (incubated without HIV-1 PR). The percentage of proteolytic cleavage for the wild-type was arbitrarily set at 100%. The data were plotted in a bar graph. Error bars represent  $\pm$ SD ( $n = 3$ ). \*  $P < 0.05$ , \*\*  $P < 0.01$ .

susceptibility to trypsin may result in the formation of CA oligomers that form structures similar to aberrant core structures *in vitro* [60].

The accessibility of tryptic cleavage sites was also studied to assess structural differences between wild-type and mutant CA proteins. Equal amount of proteins were subjected to limited proteolysis with trypsin at the same neutral pH (pH 7.5) that was used for CD spectroscopy, tryptic digestion was then followed by SDS/PAGE analysis (Fig. 4).

In case of the CA proteins bearing the A78V, L189F, or L189P mutations the efficiency of proteolytic digestion was found to be similar to that of the wild-type, no significant difference was observed (Fig. 4). The results indicate that these mutations led to only moderate changes of the protein multimerization. However, in case of the W23A, A77P, and L189I mutants the percentage of the uncleaved CA showed significant reduction (Fig. 4). Based on these results, we can conclude that the W23A, A77P, and L189I mutant proteins are more sensitive to trypsin, compared to the wild-type capsid protein. Therefore, it is expected that these mutant proteins could form aberrant core structures.

#### Mutant HIV-1 CA proteins with deviation in their secondary structure are still able to bind human cyclophilin A *in vitro*

The binding of CypA to the capsid protein is crucial for the proper decapsidation process in the early phase of infection. We have tested whether or not mutations

of CA protein may affect the CA-CypA interaction, and studied the binding efficiency *in vitro*. Purified His<sub>6</sub>-HIVCA and GST-CypA proteins were subjected to a His<sub>6</sub>-HIVCA pull-down assay followed by analysis of the eluted complexes by SDS/PAGE (Fig. 5A).

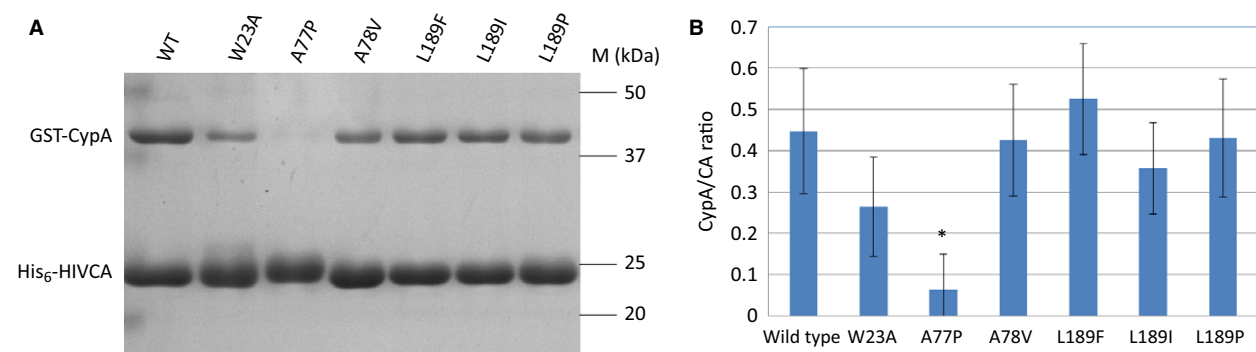
The amount of CypA associated with the W23A, A78V, L189F, L189I, and L189P mutants did not change significantly, while A77P mutant showed a highly reduced CypA binding ability compared to that of the wild-type CA protein (Fig. 5B).

Based on these results, the introduced mutations (with the exception of A77P) leading to changes in the secondary structural organization (Table 1) did not affect the CypA-binding ability of CA protein. The CypA-binding region of CA protein is located in an exposed loop at the protein surface [26], changes of the secondary structure in a different part of the protein (Table 1, Fig. 3) may not affect the conformation or relative position of this flexible loop, and therefore, do not alter the interactions between the CypA and the binding loop of CA protein.

## Discussion

Our goal in this study was to introduce mutations into the P1 and P1' positions of internal HIV-1 CA protein cleavage sites to either enhance or block cleavability at a given site. Therefore, we have expressed and purified the wild-type and modified HIV-1 CA proteins (W23A, A77P, A78V, L189F, L189P, and L189I). Our aim was to identify appropriate candidates to be introduced into the viral genomes to study the role of CA





**Fig. 5.** Analysis of the His<sub>6</sub>-HIVCA pull-down assay of the wild-type and mutant HIV-1 capsid proteins. (A) Representative SDS/PAGE of the pull-down assays. M denotes the molecular weight marker. (B) Comparison of CypA binding ability of the HIV-1 capsid proteins. Values were calculated using three independent His<sub>6</sub>-HIVCA pull-down assay experiments. Amount of CA and CypA proteins were calculated by scanning the band densities in the gels, and ratios of the two proteins were plotted in a bar graph. Error bars represent  $\pm$ SD ( $n = 3$ ). \* $P < 0.05$ .

processing in the early phase of HIV-1 infection, or in lentivirus-mediated gene transfers. Proteolysis at the cleavage sites containing W23A was substantially accelerated, leading to enhanced CA degradation. The A78V and L189F mutations also accelerated processing at the mutated sites, but with lack of enhanced or even decreased degradation, respectively. On the other hand, A77P and L189P mutations caused inhibition of processing at the mutated sites, resulting in decreased CA degradation.

Cleavage of the protein by HIV-1 PR was carried out at pH 5.5, which corresponds to the pH of the endosomes [61] where the multimeric capsid will disassemble into monomers with structures altered to the ‘molten globule’ state [28,59]. This structure allows the binding of the PR to the cleavage sites which are normally hidden in the helical parts of the protein. Aside from the cleavage of the CA protein at acidic pH, it was necessary to clarify whether the mutations affect the structure of CA at a pH where it has been found to be resistant to proteolysis. Changes in the protein structure may contribute to the alteration of proteolytic processing and may even have a major effect on the stability of the core, which affects the infectivity of the virus, as well [5].

We have predicted the effects of the mutations, and besides the *in silico* analysis, we determined the secondary structural organization of the recombinant proteins by CD spectroscopy. The results of our predictions were in good agreement with results obtained from CD measurements. The A77P and L189P mutants were predicted to have a highly destabilizing effect on the protein structure, in line with the fact that proline is known to be a helix-breaker amino acid residue. The A78V, L189F, and L189I mutations were

predicted to be neutral (L189I) or slightly destabilizing. These predictions were confirmed by CD measurements: the secondary structure of A77P and L189P mutant capsid proteins showed remarkable alterations, while only slight deviations of the secondary structures were determined in case of A78V and L189F mutants, moreover, the distribution of secondary structural elements in L189I mutant closely resembled that of the wild-type capsid protein. The only exception is the W23A mutation, which was predicted to have only a slightly destabilizing effect, CD measurement, however, detected remarkable changes in the secondary structure of this mutant protein. Trp23 has been found to be a conserved hydrophobic amino acid [2–4], so this might be the main reason behind the altered secondary structure.

Previous experiments on HIV-1 CA proteins suggested that regions exposed to tryptic digestion are crucial for the protein multimerization, in addition, altered proteolytic susceptibility to trypsin may result in CA oligomers which form structures similar to aberrant core structures *in vitro* [55]. The accessibility of trypsin cleavage sites was also used to assess structural differences in the structure of CA. We have found that the proteolytic susceptibility to trypsin did not change significantly in case of the A78V, L189F, and L189P mutants, while the W23A, A77P, and L189I mutants proved to be more prone to tryptic processing. In case of the L189F, W23A, A77P, and L189I mutants, these results are in agreement with results obtained from *in silico* analysis and CD measurements.

The importance of interaction between CA and CypA in the early phase of the replication cycle has been proved in several experiments [35,40,62], and

observations from these experiments led to the hypothesis that CypA plays a role in the uncoating mechanism as well [63]. Our results showed that CypA binding ability of W23A, A78V, L189F, L189I, and L189P mutants did not change significantly, while the A77P mutant showed a remarkable reduction in CypA binding. This was an unexpected result as A77P falls outside of the Cyp binding region.

Besides CypA, other cellular proteins like CPSF6, RanBP2, and TNPO3 have also been shown to interact with HIV-1 CA and are able to influence virion infectivity, but these proteins do not incorporate into the virion [33]. The binding site of these proteins appear to be a conserved capsid interface region formed by surface residues (N57, M66, Q67, K70, N74, and T107) of the NTD [64]. While these residues are not mutated in our study, diminished interactions with the above mentioned proteins and therefore modulation of the nuclear entry of the viruses carrying the cleavage site mutations cannot be excluded.

Our results indicate that certain modifications of the main proteolytic cleavage sites of the HIV-1 CA protein could affect not only the proteolytic susceptibility by the HIV-1 PR but also the secondary structure, tryptic susceptibility, or CypA-binding ability of the monomeric CA as well. While W23A, A77P, and L189P mutations can effectively modify the proteolytic susceptibility of the CA; along with the so far observed structural alterations, they are not suitable for our goal. Based on the experiments performed so far, we can conclude that the L189F mutant remains structurally unchanged; hence, it may be the best candidate for use in experiments affecting the action of HIV-1 PR without causing structural alterations in the structure of the CA. It should be noted, that due to the multiple functions of CA, it appears to be extremely difficult to change its sequence in such a way that would influence only one feature of the protein, such as proteolytic susceptibility. Importantly, a recent study verified the extreme genetic fragility of HIV-1 CA [65].

## Acknowledgements

We thank Dr. Carol Carter for the recombinant CA clone, Dr. John M. Louis for the clone coding for the stabilized HIV-1 PR, Dr. Tibor Kurtán for performing the CD analyses and for his help in data evaluation, and the Proteomics Core Facility of the Department of Biochemistry and Molecular Biology, University of Debrecen, for performing the MALDI-TOF MS analyses. We also thank Krisztina Matúz for her suggestions and help concerning protein purification procedures, and Szilvia Pető for technical assistance.

This work was supported in part by the TÁMOP 4.2.2.A-11/1/KONV-2012-0023 and TÁMOP 4.2.2.D-15/1/KONV-2015-0016 projects implemented through the New Széchenyi Plan cofinanced by the European Social Fund. This work was also sponsored in part by the Hungarian Scientific Research Fund (OTKA K-101591).

## Author contributions

JT, JK, and FT designed the research. FT and JK performed the experiments. FT analyzed the data with JT. JAM performed the *in silico* analysis of the secondary structure. FT wrote the paper with contributions from JT and JAM.

## References

- Arhel N (2010) Revisiting HIV-1 uncoating. *Retrovirology* **7**, 96.
- Tang S, Murakami T, Agresta BE, Campbell S, Freed EO and Levin JG (2001) Human immunodeficiency virus type 1 N-terminal capsid mutants that exhibit aberrant core morphology and are blocked in initiation of reverse transcription in infected cells. *J Virol* **75**, 9357–9366.
- Tang S, Murakami T, Cheng N, Steven AC, Freed EO and Levin JG (2003) Human immunodeficiency virus type 1 N-terminal capsid mutants containing cores with abnormally high levels of capsid protein and virtually no reverse transcriptase. *J Virol* **77**, 12592–12602.
- Tang S, Ablan S, Dueck M, Ayala-López W, Soto B, Caplan M, Nagashima K, Hewlett IK, Freed EO and Levin JG (2006) A second-site suppressor significantly improves the defective phenotype imposed by mutation of an aromatic residue in the N-terminal domain of the HIV-1 capsid protein. *Virology* **359**, 105–115.
- Forshey BM, von Schwedler U, Sundquist WI and Aiken C (2002) Formation of a human immunodeficiency virus type 1 core of optimal stability is crucial for viral replication. *J Virol* **76**, 5667–5677.
- Joshi A, Nagashima K and Freed EO (2006) Mutation of dileucine-like motifs in the human immunodeficiency virus type 1 capsid disrupts virus assembly, gag-gag interactions, gag-membrane binding, and virion maturation. *J Virol* **80**, 7939–7951.
- Yang R, Shi J, Byeon IJ, Ahn J, Sheehan JH, Meiler J, Gronenborn AM and Aiken C (2012) Second-site suppressors of HIV-1 capsid mutations: restoration of intracellular activities without correction of intrinsic capsid stability defects. *Retrovirology* **9**, 30.
- Welker R, Hohenberg H, Tessmer U, Huckhagel C and Kräusslich HG (2000) Biochemical and structural

- analysis of isolated mature cores of human immunodeficiency virus type 1. *J Virol* **74**, 1168–1177.
- 9 Tözsér J and Oroszlan S (2003) Proteolytic events of HIV-1 replication as targets for therapeutic intervention. *Curr Pharm Des* **9**, 1803–1815.
  - 10 Oroszlan S and Luftig RB (1990) Retroviral proteinases. *Curr Top Microbiol Immunol* **157**, 153–185.
  - 11 Roberts MM, Copeland TD and Oroszlan S (1991) In situ processing of a retroviral nucleocapsid protein by the viral proteinase. *Protein Eng* **4**, 695–700.
  - 12 Tözsér J, Shulenin S, Kádas J, Boross P, Bagossi P, Copeland TD, Nair BC, Sarngadharan MG and Oroszlan S (2003) Immunodeficiency virus type 1 capsid protein is a substrate of the retroviral proteinase while integrase is resistant toward proteolysis. *Virology* **310**, 16–23.
  - 13 Tözsér J, Shulenin S, Louis JM, Copeland TD and Oroszlan S (2004) In vitro processing of HIV-1 nucleocapsid protein by the viral proteinase: effects of amino acid substitutions at the Scissile Bond in the proximal zinc finger sequence. *Biochemistry* **43**, 4304–4312.
  - 14 Rumlová M, Ruml T, Pohl J and Pichová I (2003) Specific in vitro cleavage of Mason-Pfizer monkey virus capsid protein: evidence for a potential role of retroviral protease in early stages of infection. *Virology* **310**, 310–318.
  - 15 Wagner RN, Reed JC and Chanda SK (2015) HIV-1 protease cleaves the serine-threonine kinases RIPK1 and RIPK2. *Retrovirology* **12**, 74.
  - 16 Baboonian C, Dalglish A, Bountiff L, Gross J, Oroszlan S, Rickett G, Smith BC, Troke P and Merson J (1991) HIV-1 proteinase is required for synthesis of proviral DNA. *Biochem Biophys Res Commun* **179**, 17–24.
  - 17 Venaud S, Yahi N, Fehrentz JL, Guettari N, Nisato D, Hirsch I and Chermann JC (1992) Inhibition of HIV by an anti-HIV protease synthetic peptide blocks an early step of viral replication. *Res Virol* **143**, 311–319.
  - 18 Nagy K, Young M, Baboonian C, Merson J, Whittle P and Oroszlan S (1994) Antiviral activity of human immunodeficiency virus type 1 protease inhibitors in a single cycle of infection: evidence for a role of protease in the early phase. *J Virol* **68**, 757–765.
  - 19 Stefanidou M, Herrera C, Armanasco N and Shattock RJ (2012) Saquinavir inhibits early events associated with establishment of HIV-1 infection: potential role for protease inhibitors in prevention. *Antimicrob Agents Chemother* **56**, 4381–4390.
  - 20 Jacobsen H, Ahlborn LL, Gugel R and Mous J (1992) Progression of early steps of human immunodeficiency virus type 1 replication in the presence of an inhibitor of viral protease. *J Virol* **66**, 5087–5091.
  - 21 Kaplan AH, Manchester M, Smith T, Yang YL and Swanstrom R (1996) Conditional human immunodeficiency virus type 1 protease mutants show no role for the viral protease early in virus replication. *J Virol* **70**, 5840–5844.
  - 22 Fackler OT and Peterlin BM (2000) Endocytic entry of HIV-1. *Curr Biol* **10**, 1005–1008.
  - 23 Daecke J, Fackler OT, Dittmar MT and Kräusslich HG (2005) Involvement of clathrin-mediated endocytosis in human immunodeficiency virus type 1 entry. *J Virol* **79**, 1581–1594.
  - 24 Maurin T, Fenard D, Lambeau G and Doglio A (2007) An envelope-determined endocytic route of viral entry allows HIV-1 to escape from secreted phospholipase A2 entry blockade. *J Mol Biol* **367**, 702–714.
  - 25 Gitti RK, Lee BM, Walker J, Summers MF, Yoo S and Sundquist WI (1996) Structure of the amino-terminal core domain of the HIV-1 capsid protein. *Science* **273**, 231–235.
  - 26 Gamble TR, Yoo S, Vajdos FF, von Schwedler UK, Worthylake DK, Wang H, Mc Cutcheon JP, Sundquist WI and Hill CP (1997) Structure of the carboxyl-terminal dimerization domain of the HIV-1 capsid protein. *Science* **278**, 849–853.
  - 27 Freed EO (1998) HIV-1 Gag proteins: diverse functions in the virus life cycle. *Virology* **251**, 1–15.
  - 28 Misselwitz R, Hausdorf G, Welfle K, Höhne WE and Welfle H (1995) Conformation and stability of recombinant HIV-1 capsid protein p24 (rp24). *Biochim Biophys Acta* **1250**, 9–18.
  - 29 Brass AL, Dykxhoorn DM, Benita Y, Yan N, Engelman A, Xavier RJ, Lieberman J and Elledge SJ (2008) Identification of host proteins required for HIV infection through a functional genomic screen. *Science* **319**, 921–926.
  - 30 König R, Zhou Y, Elleder D, Diamond TL, Bonamy GM, Irelan JT, Chiang CY, Tu BP, De Jesus PD, Lilley CE *et al.* (2008) Global analysis of host–pathogen interactions that regulate early-stage HIV-1 replication. *Cell* **135**, 49–60.
  - 31 Jäger S, Cimermancic P, Gulbahce N, Johnson JR, McGovern KE, Clarke SC, Shales M, Mercenne G, Pache L, Li K *et al.* (2011) Global landscape of HIV-human protein complexes. *Nature* **481**, 365–370.
  - 32 Lee K, Ambrose Z, Martin TD, Oztop I, Mulky A, Julius JG, Vandegraaff N, Baumann JG, Wang R, Yuen W *et al.* (2010) Flexible use of nuclear import pathways by HIV-1. *Cell Host Microbe* **18**, 21–33.
  - 33 Campbell EM and Hope TJ (2015) HIV-1 capsid: the multifaceted key player in HIV-1 infection. *Nat Rev Microbiol* **13**, 471–483.
  - 34 Luban J, Bossolt KL, Franke EK, Kalpana GV & Goff SP (1993) Human immunodeficiency virus type 1 Gag protein binds to cyclophilins A and B. *Cell* **73**, 1067–1078.
  - 35 Braaten D, Franke EK and Luban J (1996) Cyclophilin A is required for an early step in the life cycle of human

- immunodeficiency virus type 1 before the initiation of reverse transcription. *J Virol* **70**, 3551–3560.
- 36 Lin TJ and Emerman M (2006) Cyclophilin A interacts with diverse lentiviral capsids. *Retrovirology* **3**, 70.
- 37 Franke EK, Yuan HE and Luban J (1994) Specific incorporation of cyclophilin A into HIV-1 virions. *Nature* **372**, 359–362.
- 38 Thali M, Bukovsky A, Kondo E, Rosenwirth B, Walsh CT, Sodroski J and Gottlinger HG (1994) Functional association of cyclophilin A with HIV-1 virions. *Nature* **372**, 363–365.
- 39 Yoo S, Myszka DG, Yeh C, McMurray M, Hill CP and Sundquist WI (1997) Molecular recognition in the HIV-1 capsid/cyclophilin A complex. *J Mol Biol* **269**, 780–795.
- 40 Sokolskaja E, Sayah DM and Luban J (2004) Target cell cyclophilin A modulates human immunodeficiency virus type 1 infectivity. *J Virol* **78**, 12800–12808.
- 41 Qi M, Yang R and Aiken C (2008) Cyclophilin A-dependent restriction of human immunodeficiency virus type 1 capsid mutants for infection of nondividing cells. *J Virol* **82**, 12001–12008.
- 42 Fassati A (2012) Multiple roles of the capsid protein in the early steps of HIV-1 infection. *Virus Res* **170**, 15–24.
- 43 Lee S, Han X, Choi KJ, Ding Y, Choi T, Tak E, Lee J, Ha J, Kim SS and Lee J (2008) A new method for purification of functional recombinant GST-cyclophilin A protein from *E. coli*. *Indian J Biochem Biophys* **45**, 374–378.
- 44 Louis JM, Wondrak EM, Kimmel AR, Wingfield PT and Nashed NT (1999) Proteolytic processing of HIV-1 protease precursor, kinetics and mechanism. *J Biol Chem* **274**, 23437–23442.
- 45 Mahalingam B, Louis JM, Reed CC, Adomat JM, Krouse J, Wang YF, Harrison RW and Weber IT (1999) Structural and kinetic analysis of drug resistant mutants of HIV-1 protease. *Eur J Biochem* **263**, 238–245.
- 46 Mahalingam B, Louis JM, Hung J, Harrison RW and Weber IT (2001) Structural implications of drug resistant mutants of HIV-1 protease: high resolution crystal structures of the mutant protease/substrate analog complexes. *Proteins* **43**, 455–464.
- 47 Combet C, Blanchet C, Geourjon C and Deléage G (2000) NPS@: Network protein sequence analysis. *Trends Biochem Sci* **25**, 147–150.
- 48 Worth CL, Preissner R and Blundell TL (2011) SDM—a server for predicting effects of mutations on protein stability and malfunction. *Nucleic Acids Res* **39**, 215–222.
- 49 Du S, Betts L, Yang R, Shi H, Concel J, Ahn J, Aiken C, Zhang P and Yeh JI (2011) Structure of the HIV-1 full-length capsid protein in a conformationally trapped unassembled state induced by small-molecule binding. *J Mol Biol* **406**, 371–386.
- 50 Compton LA and Johnson WC Jr (1986) Analysis of protein circular dichroism spectra for secondary structure using a simple matrix multiplication. *Anal Biochem* **155**, 155–167.
- 51 Manavalan P and Johnson WC Jr (1987) Variable selection method improves the prediction of protein secondary structure from circular dichroism spectra. *Anal Biochem* **167**, 76–85.
- 52 Sreerama N and Woody RW (2000) Estimation of protein secondary structure from CD spectra: comparison of CONTIN, SELCON and CDSSTR methods with an expanded reference set. *Anal Biochem* **287**, 252–260.
- 53 Whitmore L and Wallace BA (2004) DICHROWEB, an online server for protein secondary structure analyses from circular dichroism spectroscopic data. *Nucleic Acids Res* **32**, 668–673.
- 54 Whitmore L and Wallace BA (2008) Protein secondary structure analyses from circular dichroism spectroscopy: methods and reference databases. *Biopolymers* **89**, 392–400.
- 55 Hausdorf G, Gewieß A, Wray V and Porstmann T (1994) A recombinant human immunodeficiency virus type-1 capsid protein (rp24): its expression, purification and physico-chemical characterization. *J Virol Methods* **50**, 1–10.
- 56 Dunn BM, Gustchina A, Wlodawer A and Kay J (1994) Subsite preferences of retroviral proteinases. *Methods Enzymol* **241**, 254–278.
- 57 Louis JM, Weber IT, Tözsér J, Clore GM and Gronenborn AM (2000) HIV-1 protease: maturation, enzyme specificity, and drug resistance. *Adv Pharmacol* **49**, 111–146.
- 58 Tang S, Ablan S, Dueck M, Ayala-López W, Soto B, Caplan M, Nagashima K, Hewlett IK, Freed EO and Levin JG (2007) A second-site suppressor significantly improves the defective phenotype imposed by mutation of an aromatic residue in the N-terminal domain of the HIV-1 capsid protein. *Virology* **359**, 105–115.
- 59 Ehrlich LS, Liu T, Scarlata S, Chu B and Carter CA (2001) HIV-1 capsid protein forms spherical (immature-like) and tubular (mature-like) particles in vitro: structure switching by pH-induced conformational changes. *Biophys J* **81**, 586–594.
- 60 Ehrlich LS, Agresta BE, Gelfand CA, Jentoft J and Carter CA (1994) Spectral analysis and tryptic susceptibility as probes of HIV-1 capsid protein structure. *Virology* **204**, 515–525.
- 61 Geisow MJ and Evans WH (1984) pH in the endosome. Measurements during pinocytosis and receptor-mediated endocytosis. *Exp Cell Res* **150**, 36–46.

- 62 Braaten D and Luban J (2001) Cyclophilin A regulates HIV-1 infectivity as demonstrated by gene targeting in human T-cells. *EMBO J* **20**, 1300–1309.
- 63 Li Y, Kar AK and Sodroski J (2009) Target cell type-dependent modulation of human immunodeficiency virus type 1 capsid disassembly by cyclophilin A. *J Virol* **83**, 10951–10962.
- 64 Price AJ, Fletcher AJ, Schaller T, Elliott T, Lee K, KewalRamani VN, Chin JW, Towers GJ and James LC (2012) CPSF6 defines a conserved capsid interface that modulates HIV-1 replication. *PLoS Pathog* **8**, e1002896.
- 65 Rihn SJ, Wilson SJ, Loman NJ, Alim M, Bakker SE, Bhella D, Gifford RJ, Rixon FJ and Bieniasz PD (2013) Extreme genetic fragility of the HIV-1 capsid. *PLoS Pathog* **9**, e1003461.

### Supporting information

Additional Supporting Information may be found online in the supporting information tab for this article:

**Table S1.** List of HIV-1 CA mutagenesis primers.