



**QUEEN'S
UNIVERSITY
BELFAST**

Assessing the mycotoxicological risk from consumption of complementary foods by infants and young children in Nigeria

Ojuri, O. T., Ezekiel, C. N., Sulyok, M., Ezeokoli, O. T., Oyedele, O. A., Ayeni, K. I., ... Krska, R. (2018). Assessing the mycotoxicological risk from consumption of complementary foods by infants and young children in Nigeria. DOI: 10.1016/j.fct.2018.08.025

Published in:

Food and Chemical Toxicology

Document Version:

Publisher's PDF, also known as Version of record

Queen's University Belfast - Research Portal:

[Link to publication record in Queen's University Belfast Research Portal](#)

Publisher rights

Copyright 2018 the authors.

This is an open access article published under a Creative Commons Attribution-NonCommercial-NoDerivs License (<https://creativecommons.org/licenses/by-nc-nd/4.0/>), which permits distribution and reproduction for non-commercial purposes, provided the author and source are cited.

General rights

Copyright for the publications made accessible via the Queen's University Belfast Research Portal is retained by the author(s) and / or other copyright owners and it is a condition of accessing these publications that users recognise and abide by the legal requirements associated with these rights.

Take down policy

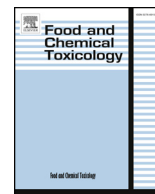
The Research Portal is Queen's institutional repository that provides access to Queen's research output. Every effort has been made to ensure that content in the Research Portal does not infringe any person's rights, or applicable UK laws. If you discover content in the Research Portal that you believe breaches copyright or violates any law, please contact openaccess@qub.ac.uk.



ELSEVIER

Contents lists available at ScienceDirect

Food and Chemical Toxicology

journal homepage: www.elsevier.com/locate/foodchemtox

Assessing the mycotoxicological risk from consumption of complementary foods by infants and young children in Nigeria



Oluwaseun T. Ojuri^a, Chibundu N. Ezekiel^{a,b,*}, Michael Sulyok^b, Obinna T. Ezeokoli^{c,d}, Oluwawapelumi A. Oyedele^a, Kolawole I. Ayeni^a, Mari K. Eskola^b, Bojan Šarkanj^{b,e}, Jana Hajšlová^f, Rasheed A. Adeleke^{c,d}, Cyril C. Nwangburuka^g, Christopher T. Elliott^h, Rudolf Krska^{b,h}

^a Department of Microbiology, Babcock University, Ilishan Remo, Ogun State, Nigeria

^b Center for Analytical Chemistry, Department of Agrobiotechnology (IFA-Tulln), University of Natural Resources and Life Sciences, Vienna (BOKU), Konrad-Lorenz-Str. 20, 3430, Tulln, Austria

^c Microbiology and Environmental Biotechnology Research Group, Agricultural Research Council-Institute for Soil, Climate and Water, Arcadia, 0001, Pretoria, South Africa

^d Unit for Environmental Science and Management, North-West University (Potchefstroom Campus), Private Bag x6001, Potchefstroom, 2531, South Africa

^e Department of Applied Chemistry and Ecology, Faculty of Food Technology, Franje Kuhača 20, Osijek, Croatia

^f University of Chemistry and Technology, Prague, Czech Republic

^g Department of Agriculture and Industrial Technology, Babcock University, Ilishan Remo, Ogun State, Nigeria

^h Institute for Global Food Security, School of Biological Sciences, Queen's University Belfast, University Road, Belfast, BT7 1NN, Northern Ireland, United Kingdom

ARTICLE INFO

Keywords:

Child health
Complementary foods
Exposure and risk assessment
Infant nutrition
Mycotoxins
Public health

ABSTRACT

This study assessed, for the first time, the mycotoxicological risks from consumption of complementary foods by infants and young children in Nigeria. Molds belonging to *Aspergillus aculeatinus*, *A. flavus*, *A. luchuensis*, *A. tubingenensis*, *A. welwitschiae* and *Geotrichum candidum* were recovered from the complementary foods. Twenty-eight major mycotoxins and derivatives, and another 109 microbial metabolites including chloramphenicol (a bacterial metabolite), were quantified in 137 food samples by LC-MS/MS. Aflatoxins and fumonisins co-contaminated 42% of the cereal- and nut-based food samples, at mean concentrations exceeding the EU limits of 0.1 and 200 µg/kg set for processed baby foods by 300 and six times, respectively. Milk contained mainly beauvericin, chloramphenicol and zearalenone. The trichothecenes, T-2 and HT-2 toxins, were quantified only in infant formula and at levels three times above the EU indicative level of 15 µg/kg for baby food. Chronic exposure estimate to carcinogenic aflatoxin was high causing low margin of exposure (MOE). Exposures to other mycotoxins either exceeded the established reference values by several fold or revealed low MOEs, pointing to important health risks in this highly vulnerable population. The observed mycotoxin mixtures may further increase risks of adverse health outcomes of exposure; this warrants urgent advocacy and regulatory interventions.

1. Introduction

Poor nutrition remains a major contributor to the numerous health problems faced by infants and young children (IYC) in resource-poor settings. Approximately one-third of children less than five years of age in developing countries suffer from nutrition-related health concerns (Onis and Branca, 2016; UNICEF, 2012). The period from birth to two years of age is the critical window for the promotion of optimal growth, health and development (WHO, 2012). However, nutrition during this age window in many parts of Africa is compromised by chronic and acute under-nutrition which impacts the survival, health and

development of IYC (IARC, 2015). In particular, the presence of diverse mycotoxins in the daily diets of IYC can potentially affect child health, growth and development (Gong et al., 2002, 2003, 2004; IARC, 2015; Kamala et al., 2016; Kimanya et al., 2009, 2010, 2014; Turner, 2013; Turner et al., 2003, 2007).

Over 400 fungal metabolites are known, with more than 300 of them being addressed as mycotoxins (Zain, 2011). Mycotoxins, toxic secondary metabolites, are produced by some fungal species in crops and processed foods under certain favorable conditions of moisture, water activity, and temperature. A variety of mycotoxins including aflatoxins (AFs), fumonisins (FBs), citrinin (CIT), ochratoxin A (OTA),

* Corresponding author. Department of Microbiology, Babcock University, Ilishan Remo, Ogun State, Nigeria.

E-mail address: chauguez@gmail.com (C.N. Ezekiel).

<https://doi.org/10.1016/j.fct.2018.08.025>

Received 1 May 2018; Received in revised form 12 August 2018; Accepted 13 August 2018

Available online 16 August 2018

0278-6915/ © 2018 The Authors. Published by Elsevier Ltd. This is an open access article under the CC BY-NC-ND license

(<http://creativecommons.org/licenses/by-nc-nd/4.0/>).

trichothecenes (deoxynivalenol (DON) and nivalenol (NIV)) and zearalenone (ZEN) have been reported to co-contaminate an array of agricultural produce (e.g. cereals, legumes, nuts, oilseeds and spices) and their products in Nigeria (Abdus-Salaam et al., 2015; Adetunji et al., 2014b; Ezekiel et al., 2012, 2016; Ogara et al., 2017; Okeke et al., 2015, 2018; Oyedele et al., 2017). Complementary foods are typically included in the diet for IYC when breast milk is no longer enough to meet the nutritional needs. Cereals and nuts together with milk and their products are the major components of complementary foods for IYC in Nigeria; as such, young children may be exposed to diverse mycotoxins through consumption of contaminated diets at the weaning stage. Unlike the adults, young children are considered as the most vulnerable population in terms of mycotoxin exposure. This is mainly due to their young age, high intake of food and water per kilogram body weight, fairly restricted diet, rapid rate of metabolism and growth, and a lower detoxification capacity (Alvito et al., 2010; EFSA, 2007; Lombard, 2014; WHO, 2006).

Mycotoxin contamination of complementary foods fed to infants in the form of milk, infant formula, cereal- and nut-based foods have been reported in other African countries (Gong et al., 2003, 2004; Kamala et al., 2016; Kimanya et al., 2010). However, there is a paucity of report on mycotoxin contamination of complementary foods from Nigeria. There has also been no effort to characterize the health risks associated with chronic dietary mycotoxin exposure from complementary foods in IYC. In the literature, however, there are reports on aflatoxin M₁ contamination of breast milk from lactating mothers and suggested risk of exposure for IYC (Adejumo et al., 2013), mycotoxin exposures based on urinary biomarker measurements of only 19 children (< 8 years) who consumed general home diets made from mainly maize (Ezekiel et al., 2014), and risk assessment estimations for IYC based on unprocessed raw maize and peanut in storage (Adetunji et al., 2017; Oyedele et al., 2017). Assessing complementary food-based mycotoxin exposure in IYC in Nigeria is, therefore, necessary for an in-depth understanding of the pattern and extent of dietary exposure to the toxins, as well as for assessing the possible chronic health risks this population may face through the daily consumption of mycotoxin-contaminated foods. In addition, a risk assessment is highly necessary in Nigeria, where mycotoxin regulations and monitoring of foods for IYC seem inadequate. Risk assessment provides reliable scientific evidence on which legislation for food regulation can be enacted and other risk management actions established in order to protect the health of IYC.

Presently, only AFs are regulated in Nigeria and in most foods, including baby foods, the limit is set at 4 µg/kg. By contrast, the regulatory maximum levels established by the European Union (EU) are: 0.10 µg/kg for aflatoxin B₁ (AFB₁) in baby foods and processed cereal-based foods for IYC; 0.025 µg/kg for AFM₁ in infant formula and follow-on formulae including infant milk and follow-on milk; 200 µg/kg for DON in processed cereal-based foods for IYC; 200 µg/kg for FBs (sum of FB₁ and FB₂) in processed maize-based foods and baby foods for IYC; 0.50 µg/kg for OTA in processed cereal-based foods and baby foods for IYC; 20 µg/kg for ZEN in processed cereal-based and processed maize-based foods and baby foods for IYC; and 15 µg/kg (indicative level, not a safety level) for the sum of T-2 and HT-2 in cereal-based foods for IYC (EC, 2006, 2013).

This study, therefore, aimed to assess the mycotoxicological risks associated with the consumption of complementary foods by IYC in Nigeria. To achieve this, complementary foods were analyzed for fungal species and a broad spectrum of microbial metabolites including fungal toxins and bacterial metabolites. Furthermore, the levels of exposure and risks that may result from daily consumption of complementary foods by IYC were estimated. It is envisaged that this study would provide expository and reliable food contamination and potential health risks data, and thus serve as a reference point to support mycotoxin monitoring and establishment of stiffer regulations for IYC foods in Nigeria.

2. Materials and methods

2.1. Description of study and food sampling

Complementary food samples (n = 137) that are routinely fed to IYC by their mothers and caregivers in Lagos and Ogun states, Nigeria, were collected in a longitudinal pattern. The longitudinal pattern consisted of two sampling rounds (hot dry season: 54 samples; warm wet season: 83 samples). The samples of the hot dry season were collected in January 2017, while those of the warm wet season were collected in June 2017. The distributions of samples were based on food preference/utilization and the food types included family cereal (maize-based pudding) (n = 26), peanut butter (n = 5), *ogi* (fermented maize pudding) (n = 23), *Tom bran* (whole meal from mixed grains (including maize and peanut) (n = 30), powdered milk (n = 36), and infant formula (milk- and cereal (maize, oats, rice or wheat)- based) (n = 17). The distributions (number of samples) of food types collected during the seasons were family cereal (hot dry season = 11; warm wet season = 15), peanut butter (hot dry season = 2; warm wet season = 3), *ogi* (hot dry season = 6; warm wet season = 17), *Tom bran* (hot dry season = 14; warm wet season = 16), powdered milk (hot dry season = 15; warm wet season = 21), and infant formula (hot dry season = 5; warm wet season = 12).

Food samples were collected at the point of feeding, either at the households or caregiver institution, after appropriate consent of mothers and caregivers were obtained and documented. Participation in the study was voluntary, only children aged 6–24 months without present ill-health as observed by mother/caregiver were included in the study approved by the Babcock University Health Research Ethics Committee (authorization number: BUHREC524/17). Data on socio-economic status of households, anthropometric data, food consumption pattern, dietary preference, and health status of 110 infants were collected by using a well-structured food frequency questionnaire (Ezekiel et al., 2014) administered to mothers and caregivers (full details in another paper, *in preparation*).

Food samples collected in this study were in the undiluted or uncooked form. For the sampling of commercial complementary foods (family cereal, peanut butter, powdered milk and infant formula), samples were taken from households with at least 400–500 g of specific food item; this was considered as the bulk sample. For the household-formulated complementary foods (*Tom bran* and *ogi*), bulk sample (500 g) of each food was collected in the first instance from at least five parts of the large food containers. Food samples weighing 20 g were then subsampled randomly and aseptically from each bulk sample and divided into two batches: batch A (10 g) for mycological analysis, and batch B (10 g) for mycotoxin analysis. Batch A samples were analyzed within 24 h of collection, while batch B samples were frozen (–20 °C) until analyzed.

2.2. Mycological analysis of food samples

2.2.1. Isolation and enumeration of fungi

Molds in the complementary food samples were isolated and enumerated on Dichloran-Glycerol (DG18) agar after dilution plating (Samson et al., 1995) was performed on the samples. The inoculated plates were incubated in the dark at 30 °C for 3 days and fungal colony counts were reported as colony forming units per gram of food sample (CFU/g).

2.2.2. Morphological assessment of fungal isolates

Colonies resembling *Aspergillus* (characteristic black and yellow-green colonies of *Aspergillus* section *Nigri* and *Aspergillus* section *Flavi*, respectively) and those of other fungi were carefully transferred with sterile toothpicks to a set of three mycological media (DG18, yeast extract sucrose (YES) agar, and malt yeast supplemented with 40% sucrose (M40Y) agar) for the assessment of colonial features after 7

days of growth at 30 °C (Samson et al., 1995).

2.2.3. Molecular identification and phylogenetic analysis of fungal isolates

Genomic DNA was extracted from the pure fungal isolates by using ZR Fungal/Bacterial DNA Miniprep kit (Zymo Research, California, USA) as previously described by Oladipo et al. (2016). Isolates were initially identified based on the sequences of the full internally transcribed spacer 1 (ITS1)-5.8S-internally transcribed spacer 2 (ITS2) region (hereafter referred to as only ITS) by using primers ITS1 (5'-TCC GTAGGTGAACCTGCGG-3') and ITS4 (5'-TCCTCGCTTATTGATA TGC-3') (White et al., 1990). Thereafter, for species-level resolution of closely-related filamentous (*Aspergillus*) species, the beta-tubulin (*benA*) and calmodulin (*caM*) genes were amplified and sequenced using primer sets *ben2f* (5'-TCCAGACTGGTCAGTGTGTA-3')/*bt2b* (5'-ACCC TCAGTGTAGTGACCCTTGGC-3') (Glass and Donaldson, 1995; Hubka and Kolarik, 2012) and CMD5 (5'-CCGAGTACAAGGAGGCCTTC-3')/CMD6 (5'-CCGATAGAGGTCATAACGTGG-3') (Hong et al., 2005), respectively (see supplementary Table A.1. for more information). Taxonomic assignments were conducted by aligning sequences against public sequences in the UNITE database (<https://unite.ut.ee/>), and GenBank. Furthermore, curated sequences of the ITS, partial *benA* and *caM* genes (for *Aspergillus* species only) of closely related type strains in the GenBank were selected for phylogenetic analysis (see supplementary File A.1 and Table A.2. for more information).

2.3. Multi-mycotoxin analysis of food samples

The dilute and shoot LC-MS/MS method described by Malachová et al. (2014) was employed to quantify mycotoxins and other microbial metabolites in the complementary food samples.

2.3.1. Chemicals

Methanol (LC gradient grade) and glacial acetic acid (p.a) were purchased from Merck (Darmstadt, Germany), acetonitrile (LC gradient grade) from VWR (Leuven, Belgium), and ammonium acetate (MS grade) from Sigma-Aldrich (Vienna, Austria). Mycotoxin standards were obtained as donations from various research groups or purchased from various commercial sources. Water was purified successively by reverse osmosis with an Elga Purelab ultra analytic system from Veolia Water (Bucks, UK).

2.3.2. Extraction of metabolites and estimation of matrix effects

Representative food sample (5 g) was homogenized with 20 ml of extraction solvent (acetonitrile/water/acetic acid 79:20:1, v/v/v) in a 50 ml polypropylene tube (Sarstedt, Nümbrecht, Germany). All samples were extracted for 90 min on a GFL 3017 rotary shaker (GFL, Burgwedel, Germany) and diluted with the same volume of the extraction solvent. Since diluted extracts were sufficiently sedimented by gravity, diluted extracts were directly injected into the LC-MS/MS instrument (Sulyok et al., 2007) without a need for a centrifugation step. Apparent recoveries of the analytes were determined by spiking 0.25 g of five different samples. The spiked samples were stored overnight at ambient temperature to allow evaporation of the solvent and to establish equilibrium between the analytes and samples. The extraction (in 1 ml of solvent), dilution and analysis were as described earlier. The accuracy of the method was verified by participation in inter-laboratory comparison studies organized by BIPEA (Gennevilliers, France). Currently, 94% of the > 850 results submitted for different types of grains, nuts, dried fruits, spices, baby food, milk powder and animal feed were in the satisfactory range (z-score between -2 and 2).

2.3.3. LC-MS/MS parameters

LC-MS/MS screening of the microbial metabolites was performed with a QTrap 5500 LC-MS/MS System (Applied Biosystem, Foster City, CA, USA) equipped with TurboIonSpray electrospray ionisation (ESI) source and a 1290 Series HPLC System (Agilent, Waldbronn, Germany).

Chromatographic separation was performed at 25 °C on a Gemini® C18-column, 150 × 4.6 mm i.d., 5 µm particle size, equipped with a C18 4 × 3 mm i.d. security guard cartridge (Phenomenex, Torrance, CA, USA). The chromatographic method, chromatographic and mass spectrometric parameters are as described by Malachová et al. (2014). ESI-MS/MS was performed in the time-scheduled multiple reaction monitoring (MRM) mode both in positive and negative polarities in two separate chromatographic runs per sample by scanning two fragmentation reactions per analyte. The MRM detection window of each analyte was set to its expected retention time ± 27 s and ± 48 s in the positive and the negative modes, respectively. Confirmation of positive analyte identification was obtained by the acquisition of two MRMs per analyte (with the exception of moniliformin (MON), which exhibited only one fragment ion). This yielded 4.0 identification points according to European Commission decision 2002/657 (EC, 2002). In addition, the LC retention time and the intensity ratio of the two MRM transitions agreed with the related values of an authentic standard within 0.1 min and 30% respectively.

2.4. Mycotoxin exposure and risk assessment of IYC

2.4.1. Chronic exposure assessment by the deterministic approach

Due to the chronic nature of the adverse effects induced by the tested mycotoxins, a chronic dietary exposure to these mycotoxins was assessed. To assess chronic mycotoxin exposures in the IYC who consume the complementary foods, a deterministic approach was used and a single point estimate of mycotoxins performed. Exposure assessment methods are appropriate to any food-borne chemical and probable daily intake (PDI) is a simple way to assess exposure to chemicals in foods (Codex Alimentarius, 1989; IPCS, 2009). PDI has been used in other studies (Fernandes et al., 2011; Kimanya et al., 2010; Marin et al., 2011; Törnkvist et al., 2011). To estimate the chronic PDI of each mycotoxin for the IYC, firstly, the daily consumption of the complementary foods (g/day) was derived from the data provided in the questionnaires for all 110 subjects included in the study. The weighted meal eaten at a single eating occasion was multiplied by the number of eating occasions per day to derive the daily food consumption per infant. The food consumption at an individual infant level was the estimate of the mother or caregiver. The daily consumption per child was based on the most frequently consumed single complementary food item, although consumption of other complementary food items was also reported. The food consumption data were collected on a single day. Then, the daily amount of the consumed food by the infant (g/day) was multiplied with the mycotoxin concentration (ng/g) in the food consumed by the infant to obtain the mycotoxin intake. The mycotoxin exposure of the individual infant (ng/kg bw per day) was then calculated by dividing the mycotoxin intake with the body weight (kg) of that infant.

The chronic dietary exposures of IYC to AFB₁, total AFs, fumonisin B₁ (FB₁), FB₁ + FB₂, FB₁ + FB₂ + FB₃, OTA and CIT were estimated as these are the major mycotoxins of significance in relation to public health. Of the emerging mycotoxins (Jestoi, 2008), chronic exposures to BEA and MON were assessed.

Handling data below the limit of detection (LOD) (so-called left-censored data) is important for exposure assessment and consequently for risk assessment. Mycotoxin contamination in the complementary food samples was evaluated and values below the limit of detection (LOD) were considered in accordance with the IPCS/GEMS (1995) criteria adopted to estimate mycotoxin exposure when concentrations less than the LOD are observed. The sample sets for different food groups analyzed varied from 17 samples of infant formula to 36 samples of milk. For peanut butter, only five samples were analyzed. The proportion of samples above LOD was high for most of the mycotoxins and the proportions ranged from 60% to 100% in many of the food groups. Of the major mycotoxins, only OTA had a high amount (80–100%) of left-censored data in all food groups, while AFB₂ and AFG₂ were only high in some food groups. High proportion of positive results was also

Table 1
Occurrence levels of 29 mycotoxins and one bacterial metabolite in 84 cereal- and nut-based complementary foods from Nigeria.

	Family cereal (n ^a = 26; N ^b = 16)				Peanut butter (n ^a = 5; N ^b = 6)				Ogf (n ^a = 23; N ^b = 19)				Tom bran (n ^a = 30; N ^b = 27)			
	%p ^c		Concentration (µg/kg)		%p ^c		Concentration (µg/kg)		%p ^c		Concentration (µg/kg)		%p ^c		Concentration (µg/kg)	
	Range	Median	Mean ± SD ^d	Range	Median	Mean ± SD ^d	Range	Median	Mean ± SD ^d	Range	Median	Mean ± SD ^d	Range	Median	Mean ± SD ^d	
3-Nitropropionic Acid	61.5	1.6–18.5	7.9	8.5 ± 4.2	20.0	5.4 ± 0.0	4.3	3.7	3.7 ± 0.0	86.7	5.7–993	19.9	79.2 ± 198			
Aflatoxicol	0.0	< LOD	–	–	0.0	–	0.0	–	–	20.0	1.4–7.8	3.7	4.4 ± 2.7			
Aflatoxin B ₁	92.3	0.4–9.3	1.6	2.4 ± 2.4	80.0	5.5–11.6	6.9	7.7 ± 2.8	4.8 ± 12.0	80.0	1.3–474	27.2	83.4 ± 125			
Aflatoxin B ₂	19.2	0.5–0.8	0.7	0.7 ± 0.1	80.0	0.6–2.0	1.3	1.3 ± 0.6	2.4 ± 0.0	56.7	0.6–81.8	4.6	12.7 ± 19.6			
Aflatoxin G ₁	92.3	0.4–2.5	0.9	1.0 ± 0.5	0.0	< LOD	–	–	0.8 ± 0.4	53.3	0.4–237	3.6	22.1 ± 58.5			
Aflatoxin G ₂	0.0	< LOD	–	–	0.0	< LOD	–	–	–	13.3	1.4–20.7	3.4	7.2 ± 9.1			
Total aflatoxins ^e	100	0.4–11.1	2.3	3.3 ± 2.9	80.0	6.5–13.6	8.0	9.0 ± 3.3	5.5 ± 13.0	83.3	0.5–590	31.2	104 ± 166			
Aflatoxin M ₁	0.0	< LOD	–	–	0.0	< LOD	–	–	0.9 ± 0.0	46.7	0.9–24.4	3.2	5.4 ± 6.3			
Aflatoxin P ₁	0.0	< LOD	–	–	0.0	< LOD	–	–	–	3.3	14.6	14.6	14.6 ± 0.0			
Alternariol	15.4	0.4–0.9	0.5	0.6 ± 0.2	0.0	< LOD	–	–	0.4 ± 0.0	30.0	1.2–7.2	1.4	2.1 ± 1.9			
Beauvericin	69.2	0.1–0.6	0.2	0.2 ± 0.1	80.0	0.6–4.1	1.1	1.7 ± 1.6	1.3 ± 1.4	96.7	0.1–69	0.5	4.4 ± 13.1			
Chloramphenicol	30.8	0.2–105	0.6	13.7 ± 36.7	20.0	3.3	3.3 ± 0.0	3.3 ± 0.0	0.9 ± 0.8	50.0	0.2–42.5	1.1	10.9 ± 15.9			
Citrinin	88.5	1.2–151	25.1	32.6 ± 39.8	0.0	< LOD	–	–	20.0 ± 40.8	73.3	1.7–1173	13.4	160 ± 313.6			
Deoxyvalenol	0.0	< LOD	–	–	0.0	< LOD	–	–	–	6.7	30.8–31.6	31.2	31.2 ± 0.6			
Dihydrocitrinone	7.7	2.2–3.4	2.8	2.8 ± 0.8	0.0	< LOD	–	–	3.9 ± 0.0	53.3	2.4–210	13.3	31.9 ± 51.1			
Fumonisin A ₁	0.0	< LOD	–	–	0.0	< LOD	–	–	4.4 ± 3.6	16.7	2.2–4.3	3.0	3.1 ± 0.8			
Fumonisin A ₂	65.4	2.4–42.6	16.2	16.7 ± 10.3	0.0	< LOD	–	–	16.1 ± 12.2	26.7	3.2–26.4	13.1	13.6 ± 9.1			
Fumonisin B ₁	100	43–836	176.4	245 ± 195	0.0	< LOD	–	–	163.4 ± 169	90.0	11–974	63.1	143.5 ± 200			
Fumonisin B ₂	100	19.3–267	60.4	84.5 ± 62.7	0.0	< LOD	–	–	112.5 ± 102	86.7	7.1–318	22.7	48.9 ± 64.9			
Fumonisin B ₃	92.3	12.4–152	48.2	48.3 ± 35.9	0.0	< LOD	–	–	41.5 ± 27.6	50.0	12.7–143	25.8	38.8 ± 33.5			
Total fumonisins ^f	100	62.3–1103	236.7	329 ± 258	0.0	< LOD	–	–	268 ± 263	96.7	7.8–1293	82.0	178 ± 259			
Total fumonisins ^g	100	62.3–1255	265.4	374 ± 294	0.0	< LOD	–	–	297 ± 292	96.7	7.8–1436	93.1	197.6 ± 289			
Fumonisin B ₄	96.2	7.3–109	28.0	33.8 ± 25.7	0.0	< LOD	–	–	55.1 ± 49.5	60.0	3.7–105	13.7	22.9 ± 25.0			
Hydrolysed FB ₁	0.0	< LOD	–	–	0.0	< LOD	–	–	–	10.0	2.1–8.1	6.9	5.7 ± 3.1			
Moniliformin	92.3	1.7–34.8	7.8	9.8 ± 7.4	60.0	2.2–3.5	2.7	2.8 ± 0.6	11.2 ± 14.2	96.7	5.1–3450	28.0	165 ± 635			
Nivalenol	0.0	< LOD	–	–	0.0	< LOD	–	–	–	10	11.4–23.8	14.1	16.4 ± 6.6			
Ochratoxin A	7.7	0.5–0.5	0.5	0.5 ± 0.0	0.0	< LOD	–	–	1.2 ± 0.8	26.7	0.5–26.4	3.4	6.8 ± 8.9			
Ochratoxin B	0.0	< LOD	–	–	0.0	< LOD	–	–	–	10	3.5–113	16.0	44 ± 59.8			
Tenuazonic acid	0.0	< LOD	–	–	0.0	< LOD	–	–	–	13.3	41.4–292	61.1	114 ± 120			
Zearalenone (ZEN)	0.0	< LOD	–	–	0.0	< LOD	–	–	1.6 ± 1.6	13.3	0.6–10.3	4.0	4.7 ± 4.1			

^a Number of samples analyzed.
^b Number of mycotoxins and bacterial metabolite detected by LC-MS/MS.
^c Percent positive samples.
^d Mean and standard deviation from mean of toxin levels found in samples.
^e Summation of aflatoxin B₁, aflatoxin B₂, aflatoxin G₁ and aflatoxin G₂ levels.
^f Summation of fumonisin B₁ and fumonisin B₂ levels.
^g Summation of fumonisin B₁, fumonisin B₂ and fumonisin B₃ levels.

observed for the emerging toxins in most of the food groups. When the proportion of mycotoxin results with < LOD was below 60% for the specific food items, and the food item consumed by a child reported a left-censored result, the exposure of that child was calculated by applying LOD/2 (= middle bound) to substitute the left-censored result. This was considered to give an appropriate exposure estimate because the proportion of left-censored data was low and the LOD for the mycotoxin was the same (or it was close in case of different forms of AFs) (IPCS, 2009). For the OTA data and for the other data sets, where the proportion of the left-censored data was greater than 60%, the substitution method, as recommended by IPCS (2009) and further by EFSA (2010) to use the lower bound (LB) and upper bound (UB) approach for chemicals which are likely present in the food (e.g. mycotoxins), was applied. To calculate the LB and UB exposure estimates, the mycotoxin concentrations < LOD were substituted with a value of 0 (i.e. minimum possible value) and with a value of LOD (i.e. maximum possible value), respectively. The food items which had mycotoxin levels < LOD for all samples tested (see Table 1) were not considered in the exposure assessment. Thus, for example, for the dietary exposure to FBs, peanut butter did not contribute nor did milk. A mean weekly exposure at the LB and UB was calculated for OTA assuming a consumption of the same food items with the same daily amount over seven days.

2.4.2. Risk characterization of the mycotoxins in complementary foods

To characterize the risk from the exposure to mycotoxins, the estimated exposures (PDIs) were compared with the defined reference point for aflatoxin, and with established health-based guidance values (HBGVs) or other reference points for other mycotoxins (IPCS, 2009). The margin of exposure (MOE) approach recommended by EFSA (2005, 2007) and Benford et al. (2010) was applied to estimate the risk from exposure to AFB₁ due to its genotoxic and carcinogenic nature. Consequently, it is assumed that any exposure, even at low doses, may pose a potential health risk (EFSA, 2005). The MOE was calculated by dividing the benchmark dose lower confidence limit of 10% extra risk (BMDL₁₀) of 170 ng/kg bw per day calculated for AFB₁ from rodent data (EFSA, 2007) by the estimated exposure (PDI) for AFB₁. The exposure (PDI) was also calculated for the sum of AFs (AFB₁, AFB₂, AFG₁ and AFG₂, i.e. total AFs). However, the BMDL₁₀ is for AFB₁ only. Therefore, in order to be conservative noting that AFB₁ constituted the major part of the total AFs in the analyzed samples, the same assumption as made by EFSA (2007) on similar toxicological potency of the total AFs to AFB₁ was taken. Thus, the BMDL₁₀ of 170 ng/kg bw per day was used as a reference value to also assess the risk posed by exposure to total AFs in the daily diets of the IYC.

To characterize the risk from the exposure to FBs and OTA, a group tolerable daily intake (TDI) of 2 µg/kg bw per day for FB₁, FB₂ and FB₃ recommended by JECFA (2011) and tolerable weekly intake (TWI) of 0.1 µg/kg bw per week recommended by JECFA (2008), respectively, were applied. For CIT, as no HBGV (e.g. TDI or TWI) has been established due to its potential genotoxic and carcinogenic properties and substantial uncertainties in the available toxicity data (EFSA, 2012), the approach of EFSA to characterize the risk for nephrotoxicity by using the level of no concern for nephrotoxicity of 0.2 µg CIT/kg bw per day was considered appropriate. Therefore, MOE was calculated with this value. At this level of exposure, however, a concern for genotoxicity and carcinogenicity remains as concluded by EFSA (2012). Due to the high uncertainties in the toxicity data, EFSA used a MOE approach for the risk characterization of BEA and MON (EFSA, 2014, 2018a). Therefore, this approach was applied. In line with EFSA, the risk assessments presented in this paper are indicative. To be prudent, the lowest dose of 90 µg BEA/kg bw per day identified by EFSA (2014) was selected for a reference point to calculate the MOE for BEA. The BMDL₀₅ of 200 µg/kg bw per day for MON derived by EFSA (2018b) was used to calculate the MOE for MON.

2.5. Statistical analysis

Data for food consumption and mycotoxin occurrences in the complementary foods were analyzed using SPSS Statistics package version 20.0 (SPSS Inc., Chicago, IL, USA). Descriptive statistics was performed for the distribution and levels of mycotoxins in the different types of complementary foods. Mean mycotoxin levels in the complementary foods collected across the two sampling seasons (hot dry and warm wet) were compared by analysis of variance (ANOVA) and the unpaired student t-test (two-sided). Where means were significant ($p < 0.05$), mean separation (post hoc test) was performed by the Duncan's Multiple Range test (DMRT) at 95% confidence level. Data for mycotoxin variations in foods by sampling season were represented in clustered boxplots.

3. Results

3.1. Demographic and food consumption data for the infants and young children

The study consisted of 60 male and 50 female subjects with a mean age of 15 months (range: 6–24 months). The mean age (\pm SD) of infants for the introduction of complementary foods was 18.3 \pm 1.6 weeks. About 55% of the IYC were fed the complementary foods 1–3 times daily while the remaining proportion of the IYC consumed the foods 4–6 times daily. For all subjects, the complementary foods constituted at least 50% of their full diet per day due to consumption of additional food commodities (e.g. breast milk for subjects below one year of age, and cereal- and tuber-based foods for subjects above 12 months but less than 24 months). The average estimated weight (\pm SD) of the complementary food meals consumed by the subjects per day was 608 \pm 179 g (range: 150–950 g). The mean (\pm SD) body weight and body mass index of the children were 9.8 \pm 2.2 kg and 17.6 \pm 3.4 kg/m², respectively.

3.2. Fungal species associated with complementary foods

The mean CFU/g of molds found in the complementary foods ranged from 200 to 1900 CFU/g (data not shown). Ninety-five fungal isolates were recovered from all samples and identified as *Aspergillus* (81.1%) and *Geotrichum candidum* (18.9%) (Fig. 1). Of the isolates belonging to *Aspergillus*, five phylotypes (Fig. 1a) were identified (frequency of occurrence in all food samples in parenthesis): *Aspergillus flavus* (33.7%), *A. welwitschiae* (28.4%), *A. tubingensis* (13.7%), *A. aculeatinus* (3.2%) and *A. luchuensis* (2.1%) (Fig. 2). Sequences of isolates are available in the GenBank under the accession numbers MH035980-MH035998 (ITS), MH063937-MH063951 (*benA*) and MH063952-MH063966 (*caM*). About 67% of all fungal isolates were obtained from Tom bran while only 2% was obtained from peanut butter. No fungal propagule was recovered from milk and infant formula.

3.3. Occurrence and distribution of microbial metabolites in complementary foods

3.3.1. Overview of microbial metabolites in complementary foods

A total of 137 metabolites (including 116 fungal-, 3 bacterial-, 1 plant-, and 17 unspecific metabolites) were quantified in the complementary food samples and the method performance for the metabolites are shown in Table A.3. Among these metabolites are those produced mainly by *Penicillium*, *Aspergillus* (including aflatoxin/sterigmatocystin pathway precursors), *Fusarium*, *Alternaria*, *Claviceps*, and other fungi. With respect to metabolite prevalence in the food samples, the *Aspergillus* metabolites were dominant (~40%) (Tables 1 and 2, Table A.4).

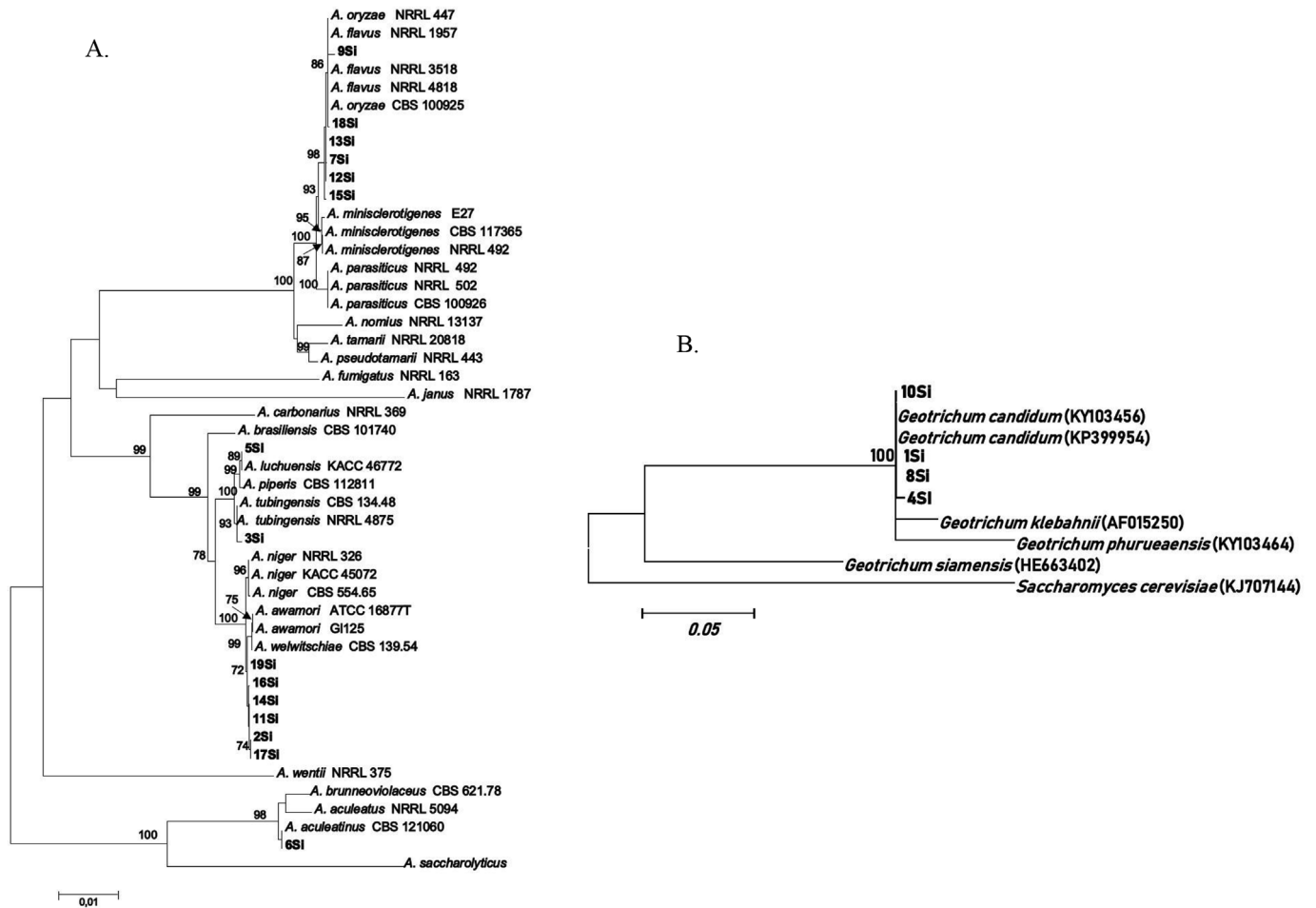


Fig. 1. Phylogenetic tree for *Aspergillus* and *Geotrichum* from complementary foods: Tree support was based on 1000 bootstrap replications. Only bootstrap values greater than 70% are shown. Isolates obtained in this study are in bold letters. **A.** The maximum-likelihood tree with the highest log-likelihood score based on concatenated dataset of ITS, partial *benA* and *caM* gene sequences of *Aspergillus* species. **B.** Maximum-likelihood tree with the highest log-likelihood score based on ITS sequences. Tree was rooted with *S. cerevisiae*.

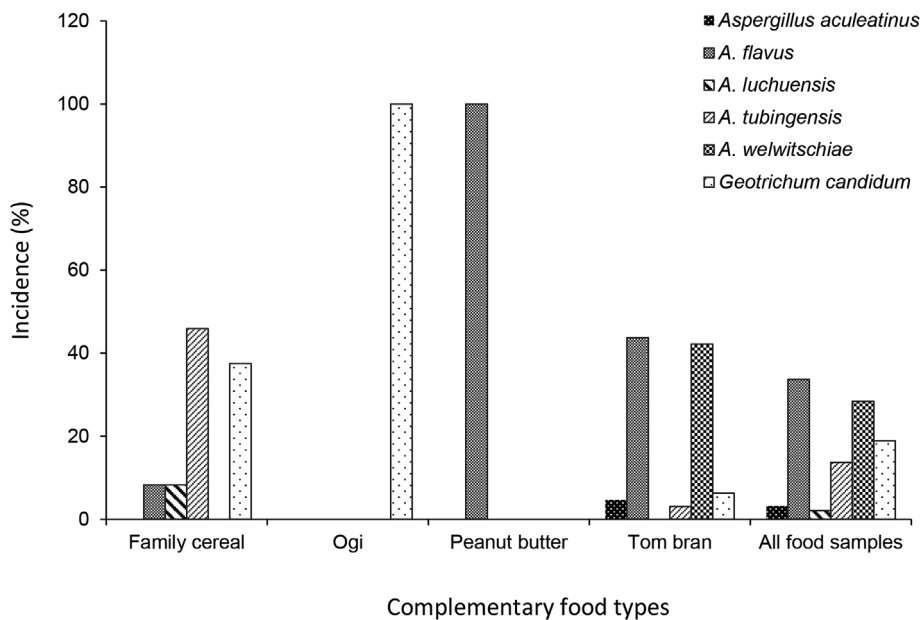


Fig. 2. Distribution of 95 fungal isolates in complementary foods in Nigeria. No fungal propagule was recovered from milk and infant formula.

Table 2
Distribution of 13 mycotoxins and one bacterial metabolite in 53 milk and infant formula from Nigeria.

Metabolites	Milk (n ^a = 36; N ^b = 3)				Infant formula (n ^a = 17; N ^b = 14)			
	% positive samples	Concentration (µg/kg)			% positive samples	Concentration (µg/kg)		
		Range	Median	Mean ± SD ^c		Range	Median	Mean ± SD ^c
3-Nitropropionic acid	0.0	< LOD	–	–	11.8	19.6–22.5	21.1	21.1 ± 2.0
Aflatoxin B ₁	0.0	< LOD	–	–	5.9	4.2	4.2	4.2 ± 0.0
Aflatoxin B ₂	0.0	< LOD	–	–	5.9	0.5	0.5	0.5 ± 0.0
Total aflatoxins ^d	0.0	< LOD	–	–	5.9	4.6	4.6	4.6 ± 0.0
Alternariol	0.0	< LOD	–	–	5.9	0.7	0.7	0.7 ± 0.0
Beauvericin	27.8	0.04–0.4	0.2	0.2 ± 0.1	17.6	0.1–13.4	0.5	4.7 ± 7.5
Chloramphenicol	38.9	0.1–63.8	0.6	8.5 ± 17.4	23.5	0.5–14.3	0.9	4.1 ± 6.7
Citrinin	0.0	< LOD	–	–	5.9	3.6	3.6	3.6 ± 0.0
Deoxynivalenol	0.0	< LOD	–	–	11.8	27.2–36	31.6	31.6 ± 6.3
HT-2 toxin	0.0	< LOD	–	–	5.9	18.8	18.8	18.8 ± 0.0
Moniliformin	0.0	< LOD	–	–	11.8	10.0–16.0	13.0	13 ± 4.2
Nivalenol	0.0	< LOD	–	–	11.8	18.9–22.0	20.5	20.5 ± 2.2
T-2 toxin	0.0	< LOD	–	–	11.8	0.8–119	59.6	59.6 ± 83.2
Zearalenone	2.8	0.6	0.6	0.6 ± 0.0	23.5	0.4–5.4	3.6	3.2 ± 2.1

^a Number of samples analyzed.

^b Number of mycotoxins and bacterial metabolite detected by LC-MS/MS.

^c Average and standard deviation from mean of toxin levels found in samples.

^d Summation of aflatoxin B₁ and aflatoxin B₂ levels.

3.3.2. Mycotoxin occurrences and levels in complementary foods

Twenty-eight major mycotoxins and their derivatives were quantified in the complementary food samples (Tables 1 and 2). Table 1 presents the distribution and occurrence levels of 29 mycotoxins (including the sum of AFB₁, AFB₂, AFG₁ and AFG₂; sum of FB₁, FB₂ and FB₃; and sum of FB₁ and FB₂) and one major occurring bacterial metabolite (chloramphenicol) in 84 cereal- and nut-based complementary food samples. Similarly, Table 2 shows the distribution of 13 mycotoxins and the bacterial metabolite (chloramphenicol) in 53 milk and infant formula samples. *Tom bran*, *ogi*, family cereal, infant formula, peanut butter and milk contained 27, 19, 16, 13, 6 and 3 different mycotoxins, respectively.

Aflatoxin B₁ contaminated 92.3% of family cereal, 80% of peanut butter, 80% of *Tom bran*, 52.2% of *ogi* and 5.9% of infant formula samples at respective mean concentrations of 2.4, 7.7, 83.4, 4.8 and 4.2 µg/kg. Total AFs (AF_{tot}: sum of AFB₁, B₂, G₁ and G₂) occurred in 100% of family cereal (mean: 3.3 µg/kg), 83.3% of *Tom bran* (mean: 104 µg/kg), 80% of peanut butter (mean: 9 µg/kg), 52.2% of *ogi* (mean: 5.5 µg/kg) and 5.9% of infant formula (mean: 4.6 µg/kg) samples (Tables 1 and 2). Other AF types quantified were AFM₁ in 4.3% of *ogi* (0.9 µg/kg) and 47% of *Tom bran* (mean: 5.4 µg/kg), and AFP₁ in one sample of *Tom bran* (14.6 µg/kg) (Table 1). FBs contaminated only the cereal-based complementary foods, with FB₁ occurring in 100% of family cereal (mean: 245 µg/kg), 90% of *Tom bran* (mean: 143.5 µg/kg) and 82.6% of *ogi* (mean: 163.4 µg/kg) samples (Table 1). The mean concentration of total FBs (sum of FB₁, FB₂ and FB₃) was higher in family cereal samples (374 µg/kg) than in *ogi* (297 µg/kg) and *Tom bran* (198 µg/kg). FBs of the A series were quantified in the foods where the B series were also found. Ochratoxin A was quantified in family cereal (7.7%), *ogi* (8.7%) and *Tom bran* (26.7%) samples while ZEN occurred in only *ogi* (8.7%) and *Tom bran* (13.3%) samples (Table 1). HT-2 and T-2 were detected only in 5.9% and 11.8% of infant formula samples at the mean concentrations of 18.8 µg/kg and 59.6 µg/kg, respectively (Table 2). Deoxynivalenol occurred in 6.7% and 11.8% of *Tom bran* and infant formula samples, respectively, with mean concentrations of 31 µg/kg in each food type.

Citrinin and its metabolite, dihydrocitrinone, were found in at least 61% and 4%, respectively, of the cereal-based food samples (family cereal, *ogi* and *Tom bran*) although as many as 53% of *Tom bran* samples contained dihydrocitrinone (Table 1). Only one sample of infant formula with milk and maize as constituents, however, contained CIT

(Table 2). Other prevalent mycotoxins were the emerging *Fusarium* mycotoxins, BEAU and MON, which contaminated as much as 97% of all the food samples tested. Only two mycotoxins (BEAU and ZEN) and one bacterial metabolite (chloramphenicol) were quantified in the milk samples; the mycotoxin concentrations were low (< 1 µg/kg) whilst the levels of chloramphenicol reached 64 µg/kg (Table 2). The chromatograms of some contaminated food samples are given in Fig. 3.

Overall, *ogi*, family cereal and *Tom bran* samples contained as many as 7, 10 and 12 co-occurring mycotoxins, respectively. The major co-occurring toxins were AFB₁, FB₁+FB₂, CIT, MON and OTA. Infant formula and peanut butter contained mainly AFs and MON which occurred simultaneously, while the milk samples showed no evidence of co-occurrence of any major mycotoxins.

3.3.3. Seasonal variations of mycotoxin levels in complementary foods

The variations of 24 mycotoxins and one bacterial metabolite in the complementary foods based on season of food sampling are given in Fig. 4. The concentrations of AFs in the foods did not significantly vary between sampling seasons, though higher levels were observed in the samples collected during the hot dry season than in those from the warm wet season. Of all the measured mycotoxins, only FA₂, FB₁, FB₃ and total FBs significantly (*p* < 0.05) varied between seasons, with higher levels observed during the warm wet season (Fig. 4).

3.3.4. Mycotoxin concentrations and regulatory levels in complementary foods

In general, the Codex Alimentarius standard providing maximum levels (MLs) for mycotoxins in foods are regarded as internationally accepted. However, as the Codex standard does not include specific MLs for mycotoxins in foods for infants and young children, the MLs established by the EU were used to evaluate the compliance of the analyzed food samples. With regard to T-2 and HT-2 toxins, the non-legally-binding indicative level of the EU was used. This level is not a safety level and above it further investigations should be conducted.

The proportions of complementary food samples exceeding the levels stipulated by the EU legislation for various mycotoxins are presented in Table 3. The levels of AFs, FBs, OTA, T-2 + HT-2 clearly exceeded the EU levels in various complementary food samples. As much as 52% of the *ogi* and 80% of the *Tom bran* samples contained AFB₁ at the levels above the 0.1 µg/kg EU ML for processed baby food, while 39% and 23% of the same food types, respectively, exceeded the

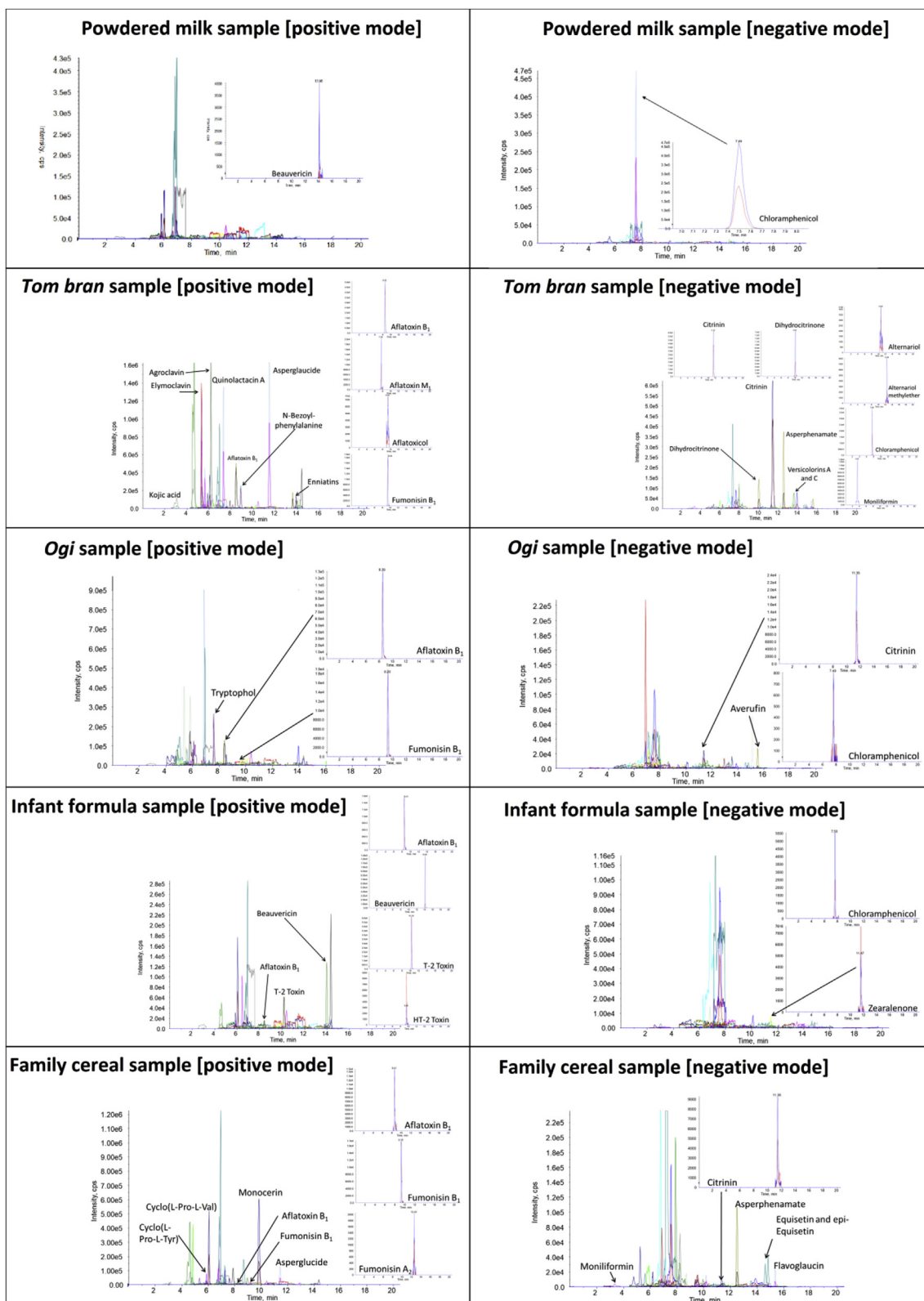


Fig. 3. Chromatograms of mycotoxins and bacterial metabolite found in complementary food samples for infants and young children in Nigeria.

200 µg/kg EU ML for the sum of FB₁ and FB₂ in processed baby food. The 0.5 µg/kg EU ML for OTA in processed baby food was exceeded by 9% of the *ogi* and 27% of the *Tom bran* samples. Only 27% and as much as 80% of family cereal and peanut butter samples, respectively, contained AFB₁ at levels exceeding the 2 µg/kg EU ML for processed cereal-based foods, while total AFs in 19% of family cereal were above the

4 µg/kg EU ML for same category of foods. However, the 0.1 µg/kg EU ML for processed baby food was also applied to family cereal and peanut butter due to the consumption of these two food sets by IYC in Nigeria as observed in this study; consequently, 92% and 80% of the respective food products exceeded this level (Table 3). Overall, the average AFB₁ content in the cereal-based foods exceeded, by at least

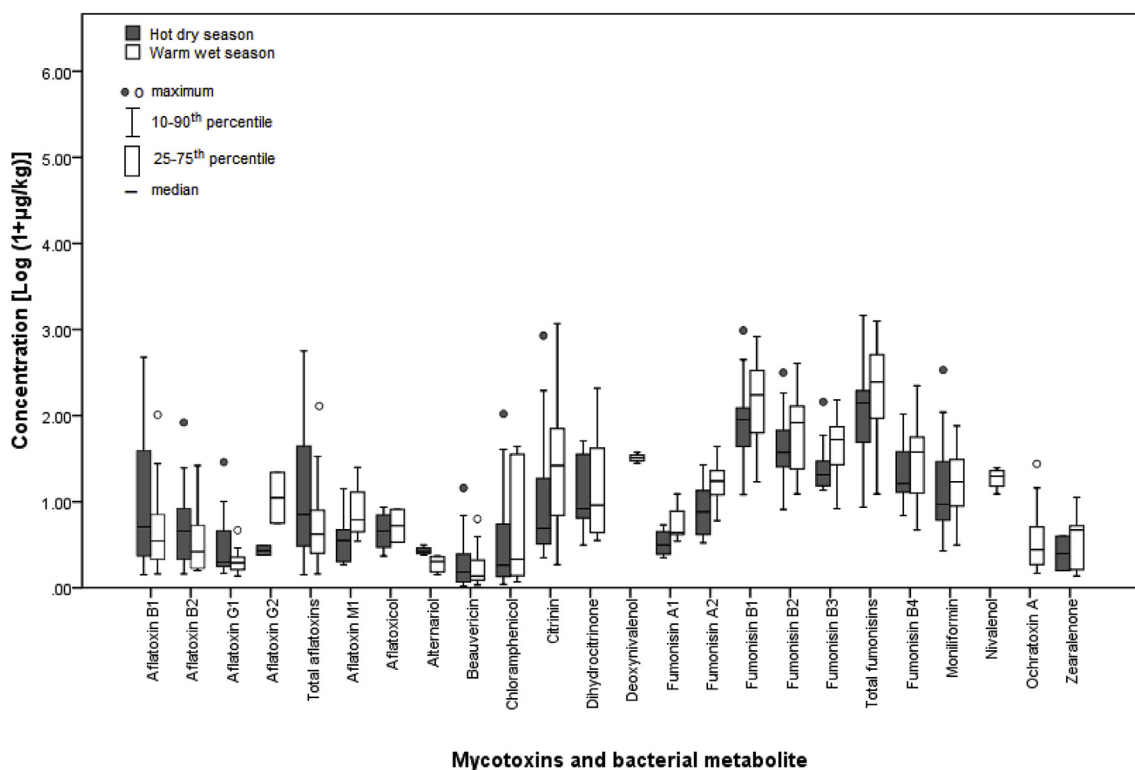


Fig. 4. Variation in mycotoxin and bacterial metabolite levels in complementary foods from two (hot dry and warm wet) climatic seasons in Nigeria. Only differences in levels of FA₂, FB₁, FB₃ and total FBs between seasons were significant ($p < 0.05$).

100 times, the EU ML of 0.1 µg/kg AFB₁ set for processed baby food. The FB levels in family cereal samples were above the 800 µg/kg EU ML for FB₁ + FB₂ in processed cereal-based foods and the applied 200 µg/kg EU ML for FB₁ + FB₂ in processed baby food in 9% and 23% of the samples, respectively. The EU ML of 0.1 µg/kg for AFB₁ in processed baby food was also applied to infant formula in this study because the measured infant formula contained a mix of milk and cereals, and also due to the non-detection of AFM₁, which is regulated at 0.025 µg/kg in the EU for infant formula; consequently, 6% of the infant formula samples exceeded the applied limit. The sum of T-2 and HT-2 toxins exceeded, by 9 times, the 15 µg/kg EU indicative level for infant formula in one sample (6%) (Table 3).

3.4. Assessed dietary exposures and health risks from consumption of contaminated complementary foods and identified uncertainties of the assessments

3.4.1. Exposure assessment and risk characterization

The chronic mycotoxin exposures from consumption of complementary foods, reference points and HBGVs used for risk assessments are presented in Table 4. The dietary chronic exposures for IYC consumers were in the ranges of 2.5–51,192 ng/kg bw per day for AFB₁ and 25.7–54,892 ng/kg bw per day for total AFs, resulting in the respective MOEs of 0.003–70 and 0.003–7. For total FBs (sum of FB₁, FB₂, FB₃ and FB₄), the estimated chronic exposures of the IYC was 0.00–138.6 µg/kg bw per day. The maximum exposure was at least 69-fold higher than the group TDI of 2 µg/kg bw per day for the sum of FB₁, FB₂, FB₃ and FB₄. For OTA, the individual exposures ranged from 0 or 0.01 µg/kg bw per week for LB or UB, respectively, to 2.03 µg/kg bw per week. At higher exposure levels, the TWI of 0.1 µg OTA/kg bw was exceeded up

Table 3
Percentage of complementary foods that present mycotoxin levels above the EU maximum acceptable limits.

Categories	Percentage of samples exceeding EU stipulated limits							
	AFB ₁	AFM ₁	AF total	FUM ^d	OTA	ZEN	T-2 + HT-2	DON
Limits (µg/kg) for processed baby food	0.1	0.05	4 ^c	200	0.5	20	15	200
Tom bran (n = 30)	80	47	73.3 ^c	23.3	26.7	–	–	–
Ogi (n = 23)	52	4.3	8.7 ^c	39.1	8.7	–	–	–
Limits (µg/kg) for processed cereal-based foods	2(0.1) ^a	–	4	800(200) ^a	–	100(20) ^a	–	–
Family cereal (n = 26)	27(92) ^a	–	19.2	8.7(23.3) ^a	–	–	–	–
Peanut butter (n = 5)	80(80) ^a	–	80	–	–	–	–	–
Limits (µg/kg) for infant formula	0.1 ^b	0.025	–	–	–	–	–	–
Infant formula (n = 17)	5.9 ^b	–	5.9	–	–	–	5.9	–

^a Limit is applied for this study due to consumption of these foods by IYC in Nigeria.

^b Limit is applied for this study because infant formula contains cereals.

^c Aflatoxins limit in Nigeria.

^d Sum of fumonisins B₁ and B₂.

Table 4

Estimated mycotoxin exposure of children consumers of complementary foods in Nigeria including reference values used for risk assessment and calculated margins of exposure.

	Mycotoxin concentrations and exposure levels				
	AFB ₁	Total aflatoxin	Beauvericin	Moniliformin	Citrinin
Mycotoxins ^a	0.12–473.8	0.88–589.8	0.004–69	0.8–3450.2	0.08–1172.7
Exposure ^b	2.5–51,192	25.7–54,892	0–3.14	0.02–156.8	0.002–102
RP ^c	170	170	90	200	0.2
MOE ^d	0–70	0–7	0–30	1–10,000	0–100
	Total fumonisins ^f		OTA LB ^g		OTA UB ^h
Mycotoxins ^a	4.6–1540.4		0–26.4		0.4–26.4
Exposure ^b	0–138.6		0–2.03		0.01–2.03
HBGV ^e	2		0.1		0.1

^a Range of mycotoxin levels (µg/kg) in foods for infants and young children.

^b Range of exposure (ng/kg bw per day for aflatoxins; µg/kg bw per week for OTA; µg/kg bw per day for other mycotoxins).

^c Reference point used for risk assessment; for aflatoxin BMDL₁₀ (ng/kg bw per day); for beauvericin a lowest dose of EFSA (2014) (µg/kg bw per day); for moniliformin BMDL₀₅ (µg/kg bw per day); for citrinin a level of no concern for nephrotoxicity (µg/kg bw per day).

^d Range of margin of exposure; rounded to the first significant figure.

^e Health based guidance value; for fumonisins a tolerable daily intake (TDI) (µg/kg bw per day); for ochratoxin a tolerable weekly intake (TWI) (µg/kg bw per week).

^f Sum of fumonisins B₁, B₂, B₃ and B₄.

^g Lower bound values were estimated by assigning zero to values lower than the limit of detection.

^h Upper bound values were estimated by assigning the value of the limit of detection to values lower than the limit of detection.

to 20 times. The calculated range of MOE for CIT was 0–100 for chronic exposures of 0.002–102 µg/kg bw per day compared to the level of 0.2 µg/kg bw per day at which no concern for nephrotoxicity exists. The estimated range of exposures to MON was 0.02–156.8 µg/kg bw per day and to BEA 0.00–3.14 µg/kg bw per day with the respective MOEs of 1–10,000 and 0–30.

3.4.2. Evaluation of the uncertainties of the exposure and risk assessments for mycotoxins

Evaluation of the uncertainties associated with exposure and risk assessment should accompany the exposure and risk assessment (IPCS, 2009). Therefore, the uncertainties were also evaluated in this study. In the exposure and risk assessment of the Nigerian IYC population, the uncertainties arose mainly from the collection of the daily amounts of consumed food and omission of the food consumption information of other items than the major one per individual. These uncertainties may lead either to an underestimation or overestimation of the exposure. The food consumption data were collected from 110 Nigerian IYC comprising females and males and represent the best available estimates for food consumption habits within this sub-population in Nigeria. The selected food items are the most often fed complementary foods in Nigeria; therefore, the omission of other complementary food items adds only a minor portion to the overall uncertainty of the assessment. The fact that food preparation of *ogi* and *Tom bran* were not considered overestimates the exposure as these food items are diluted before feeding to children. A minor contribution to the overall uncertainty of the exposure assessment originated from the occurrence data generated by the validated LC-MS/MS method.

The application of the middle bound for the occurrence data < LOD contributes to uncertainty of exposure assessment and can either underestimate or overestimate the exposure. The left-censored samples may have contained mycotoxins at higher levels than the middle-bound or they could have been free from mycotoxins. Similarly, the use of LB and UB approach add uncertainty to the exposure estimate; the first underestimating and the latter overestimating the exposure. The application of uncertain reference points for CIT, BEA and MON add uncertainty to their risk assessments, and therefore their risk assessments provide only indications on possible risks. Generally, owing to the available toxicological data, HBGVs and reference points used to characterize risks are typically derived for adults and not for

infants and children (WHO, 2006). As the age of the infants in this study was above 16 weeks, it was considered appropriate to use the available HBGVs for adults (EFSA, 2018a). Overall, the exposure and risk assessments for varied mycotoxins were conducted by following the internationally accepted best practices and therefore the assessments are considered to be sufficiently robust.

4. Discussion

This study reports, for the first time, diverse fungal species in processed complementary food samples in Nigeria, as well as the contamination of complementary foods for IYC with as much as 28 mycotoxins and a notable bacterial metabolite. Although, there is no report on fungal contamination of complementary foods in Nigeria, the identified fungal species in this study have been reported in maize and fermented soybean (*moju*) samples from Italy and Korea, respectively (Hong et al., 2015; Logrieco et al., 2014). Furthermore, previous studies from Nigeria that adopted the classical fungal identification method reported several black *Aspergilli* occurring in crops to be *A. niger*, *A. niger* clade or *Aspergillus* section *Nigri* due to the inability to morphologically distinguish members of this group of *Aspergillus* (Adetunji et al., 2014a; Ezekiel et al., 2013, 2016; Oyedele et al., 2017). The black *Aspergilli* and *A. flavus* have also been reported to occur in household dust/environment worldwide (Jurjevic et al., 2012; Visagie et al., 2014), with few strains linked to respiratory problems in humans (Gautier et al., 2016; Sarubbi et al., 1982). Thus, fungal contaminations reported in this study may have resulted from exposure of the foods to indoor environment given that the food samples were collected from households. This suggests that the food storage practices are not appropriate. Thus, IYC may be faced with health and food poisoning risks by food spoilage microorganisms.

A range of fungal metabolites, including compounds of toxicological importance such as AFs, FBs, CIT, OTA, trichothecenes (DON, T-2 and HT-2 toxins) and emerging mycotoxins (BEA and MON), were found to be prevalent in the complementary foods for IYC in Nigeria as reported in this study. Similar reports on mycotoxin contamination of complementary foods are available in literature for Kenya (Okoth and Ohingo, 2004), Canada (Tam et al., 2006), Turkey (Baydar et al., 2007; Kabak, 2009), Portugal (Alvito et al., 2010), Italy (Juan et al., 2014), and Tanzania (Kamala et al., 2016; Kimanya et al., 2010, 2014).

The mean AFB₁ level quantified in the cereal-based complementary foods (family cereal, *ogi*, *Tom bran* and infant formula containing milk and maize) was more than 40 times the mean value reported by Baydar et al. (2007) for cereal-based food and at least a hundred times higher than the EU regulatory ML for baby food. Such data calls for urgent intervention considering that AFB₁ is a potent human carcinogen inducing hepatocellular carcinoma (IARC, 1993), and reports indicate that the toxin contributes to childhood stunting (Gong et al., 2002, 2016; IARC, 2015). Nevertheless, based on evidence obtained from a recent IARC (2015) evaluation of effects of AFs and FBs on growth of children in low- and middle-income countries, exposure to AFs and FBs contributes to childhood stunting independent of, and together with, other risk factors causing stunting (e.g. undernutrition). In this study, AFB₁ was quantified in almost all the complementary food samples contrary to the Italian infant formula and cereal-based complementary foods (Juan et al., 2014). AFM₁, hydroxylated metabolite of AFB₁ and a group 2B human carcinogen (IARC, 1993), was quantified in *ogi* and *Tom bran* but not in the milk or infant formula, contrary to the previous reports of AFM₁ contamination in milk and milk-based foods for IYC (Alvito et al., 2010; Tsakiris et al., 2013; Er et al., 2014; Kanungo and Bhand, 2014).

It is crucial to mention that the complementary foods analyzed in this study contained AFs above the regulated MLs for these foods in the EU and Nigeria. In fact, as much as 80% of *Tom bran* samples exceeded the AFB₁ level for processed baby food; this is of serious concern giving the widespread consumption of *Tom bran* made from four to five mixed grains, including maize and peanuts. It is therefore imperative for households to review the formulations of grains that are applied in this food type; grains (e.g. soybean, sorghum, and perhaps small underutilized cereals such as fonio millet) that are less prone to AFs may be considered during food formulations. Similarly, family cereal, which had approximately one-fifth of its samples containing AFB₁ and total AFs above the respective 2 and 4 µg/kg limits for processed cereals, recorded as much as 90% violation when the limit was lowered to 0.1 µg/kg based on the “realistic” feeding practices observed at household level. The peculiarity of this food is the fact that mothers and caregivers do not take notice of consumption advice, which excludes the feeding of this product to infants. Reasons for feeding family cereal to IYC by mothers against the given advice were acceptability of product by IYC and perceived nutritional benefits to IYC. Thus, practical solutions for protecting IYC health may include: a) deliberate efforts (e.g. via media campaigns and target group peer trainer seminars) by the health professionals to advice on the health risks due to mycotoxins in foods and to exclude feeding infants with this product; b) setting of appropriate standards or the revision of existing ML for various categories of Nigerian complementary foods. Furthermore, there may be a need for the Nigerian food risk managers to consider applying the 0.1 µg/kg ML for AFB₁ in processed cereal-based foods to infant formula given the inclusion of cereals in infant formula and the outcome of this study.

Taking into consideration the vulnerability of the IYC to mycotoxins, the estimated high dietary exposures to AFs is of great significance to IYC health. According to EFSA (2005), a MOE below 10,000 for a substance that is both genotoxic and carcinogenic, based on the BMDL₁₀ from an animal study, is regarded as an indication that the exposure to the substance is of a potential concern for public health and requires risk management actions. In this study, the chronic health risk from the exposure to AFs in complementary foods is considered substantial because a) the calculated MOEs were significantly below 10 000 for all IYC, b) a high proportion of samples were positive for AFs and exceeded the EU MLs – thus, indicating regular high concentrations of AFs in the complementary food commodities, and c) the consumers (IYC) are amongst the most vulnerable population. Therefore, urgent risk management actions to advice consumers to lower the AF concentrations in the foods intended for IYC feeding and to monitor AFs in their foods are required. For chemical compounds which are both

genotoxic and carcinogenic, IPCS (2009) recommends that their exposure should be kept as low as reasonably achievable (ALARA). This principle should be applied for AFs in the IYC complementary foods in Nigeria.

FB₁, classified by IARC to be possibly carcinogenic (IARC, 2002), was detected in all the cereal-based complementary foods excluding infant formula containing cereals. Although the FB contents in the foods were high, these levels were lower than those previously reported for FB₁ in complementary food in Tanzania (Kimanya et al., 2010, 2014). It is, however, worrisome that almost a quarter of each of the cereal-based complementary foods contained FBs at levels exceeding the EU regulatory limit for processed baby food. Additionally, the estimated exposures, which exceeded by many folds the group TDI for FBs, indicate a health risk for most of the IYC. The high number of contaminated samples (up to 100%) and in particular, observed high concentrations in the wet season suggest that regular exceedance of HBGV occurs. Consumption of FB-contaminated food has been linked to oesophageal cancer (Rheeder et al., 1992), neural tube defects (Missmer et al., 2006), and growth impairment in children (Kimanya et al., 2010; Shirima et al., 2015; Chen et al., 2018). The lack of regulation for FBs in most food commodities (including foods for IYC) across Africa, and the present observation of a co-occurrence of FBs with AFs in 42% of the 137 analyzed complementary food samples further worsen the scenario. This is because both mycotoxins (FBs and AFs) may interact to impair growth in children (Shirima et al., 2015), although undernutrition and other risk factors are important contributing factors as well (IARC, 2015). Consequently, risk management actions similar to those of AFs would be appropriate. During the wet season when FB concentrations and prevalence can be high, the mothers and caregivers should endeavor to avoid those food items that may increase the risk to dietary exposure to FBs.

The potent nephrotoxic OTA was quantified in the cereal-based complementary food samples (family cereal, *ogi* and *Tom bran*) at average levels that exceeded, by about six times, the EU regulatory limit for processed baby food. The highest concentrations recorded in the samples exceeded also the maximum values reported for infant foods in Turkey and Portugal (Alvito et al., 2010; Baydar et al., 2007) but were below the highest values reported in infant formula in Italy (Meucci et al., 2010). OTA is a class 2B possible human carcinogen (IARC, 1993) with nephrotoxic (Creppy, 2002), genotoxic and mutagenic potentials (Rosa et al., 2004). The risk assessment outcome reveals a potential health concern for many IYC from the chronic exposure due to the exceeded TWI.

CIT, another nephrotoxic (Fuchs and Peraica, 2005; Stefanovic et al., 2006) and possibly a genotoxic carcinogen (Boulimi et al., 2008; Liu et al., 2003), is reported for the first time to the best of our knowledge in family cereal, *Tom bran* and infant formula. It was, however, recently reported in maize and *ogi* from Nigeria (Okeke et al., 2015, 2018). About 60–80% of the highly consumed cereal-based foods (excluding infant formula) in this study was contaminated with CIT. A higher proportion of these samples containing high levels of CIT leading to no margin between exposure and the level of no-concern for nephrotoxicity suggest a potential health risk for IYC from the exposure to CIT. As substantial uncertainties were associated with the derivation of the reference value (EFSA, 2012), the outcome of this assessment is indicative of possible risk. However, considering that CIT-induced genotoxicity and carcinogenicity could not be excluded at the level of no-concern for nephrotoxicity (EFSA, 2012), similar risk management measures as for AFs are warranted.

The co-occurrence of nephrotoxic OTA and likely genotoxic-carcinogenic CIT, with AFs, FBs, and other major mycotoxins in more than 90% of the food samples analyzed in this study may further increase the health risks in the studied vulnerable population group. Combined effects of multiple food contaminants, such as the combinations reported here, have been mainly elucidated *in vitro* and summarized by Klarić et al. (2013). Background concentrations of OTA/CIT, OTA/CIT/FB₁

and OTA/FB₁ combinations have been reported to exert synergistic effects and combinations of OTA/AFB₁ and OTA/FB₁ additive effects *in vitro* (Creppy et al., 2004; Golli-Bennour et al., 2010; Klarić et al., 2008, 2012; Stoev et al., 2009). However, the relevance of combined effects *in vivo* is still poorly understood. The exposure to a mixture of toxins with interactive effects in the same target organ, in particular with the same mode of action, may enhance incidence of chronic diseases (e.g. renal disease) and cancer (Klarić et al., 2013; EFSA, 2018b).

Other toxicologically important mycotoxins that were found to occur at high frequencies in the complementary food samples include alternariol, BEA, MON, T-2 and HT-2 toxins. Alternariol is a possible genotoxic carcinogen (Lee et al., 2015; Ostry, 2009; Rychlik et al., 2016) that was quantified in all the cereal-based foods including infant formula. Similar findings have been reported by Rychlik et al. (2016). There is no previous reports of BEA and MON in baby foods in Nigeria and in milk globally, although BEA was found to contaminate infant cereals in other countries (Blessa et al., 2012; Juan et al., 2013). However, a recent report found BEA to be the dominant mycotoxin in human breast milk in Ogun state, Nigeria (Braun et al., 2018). The low MOEs calculated for BEA and its high occurrence in the regularly consumed cereal-based complementary foods indicate a potential health concern for IYC. The exposures to MON suggests a potential health concern particularly for regular family cereal consumers. However, like EFSA, no firm conclusions could be made of the risks posed by the BEA and MON exposures owing to the uncertainties associated with the derived reference points.

The dietary exposure to most of the mycotoxins appears to be regular. This increases the risks of adverse health effects when HBGV or other reference points are repeatedly exceeded. Even if the contribution of the exposure from the separate food items to a total daily exposure was not estimated, it is reasonable to conclude that the exposure from peanut butter contributed less to the daily mycotoxin exposure because it is consumed as a spread. In contrast, the major contributing food item to the mycotoxin exposure was *Tom bran* due to the highest concentrations observed and given its frequent consumption. It is noteworthy that other foods not considered in this study but fed to IYC may also contribute to the total mycotoxin exposure.

The trichothecenes, immune- and haematotoxic T-2 and HT-2 toxins (EFSA, 2017), that were quantified in the infant formula samples at levels three times higher than the EU indicative level, is noteworthy because these mycotoxins have not been previously reported in processed foods in Nigeria. Although the EU indicative level is not a safety level, this finding calls for further investigations. The presence of the bacterial metabolite, chloramphenicol with antibiotic properties, in the complementary foods (including milk and infant formula) demands attention as it is critical to avoid unwanted antibiotic exposure in this vulnerable population.

Overall, the co-occurrence of major mycotoxins in the complementary food samples is similar to previous reports on co-occurrence of these mycotoxins in individual grains used in production of complementary foods (Geary et al., 2016; Hove et al., 2016; Kamala et al., 2015, 2016; Kimanya et al., 2008, 2014; Smith et al., 2016). Higher co-occurrence in *Tom bran* may have been facilitated by the different grains used in the formulation of this complementary food. The recorded low-to-moderate concentrations of the emerging mycotoxins and other metabolites, whose toxicities have not been well documented in literature, should not be overlooked due to the recent reports of synergistic interactions of background concentrations of emerging toxins with major toxins (Vejdovszky et al., 2016, 2017a; 2017b).

Seasonal variations in the levels of some mycotoxins were observed in the complementary foods. The variations are arguably linked to the quantities of mycotoxins in the grains/raw materials used in the production of these complementary foods as opposed to post-production contamination. Many mycotoxins are known to be produced in larger quantities at higher temperatures and due to increased rainfall frequency (Bandyopadhyay et al., 2007; Marin et al., 1995; Ono et al.,

1999; Visconti, 1996; Viquez et al., 1996).

5. Conclusion and recommendations

This study has shown that fungi and mycotoxins in addition to bacterial metabolites (e.g. antibiotics) are common contaminants of complementary foods produced in Nigeria. The presence of several major and emerging mycotoxins in the baby food samples highlight the need to prioritize routine surveillance and monitoring of these foods by the regulatory authorities. The high chronic exposure estimates for several different mycotoxins reveal an enormous health risk for the general IYC population fed with complementary foods in Nigeria. Presently, regulations for mycotoxins in baby foods in Nigeria are clearly inadequate as demonstrated by the adoption of a limit of 4 µg/kg for AFs in the foods compared to the EU limit of 0.1 µg/kg. Furthermore, other major mycotoxins reported in this study are not regulated in baby foods in Nigeria. Therefore, a revision of the AF regulation and considerations for the regulations of FBs and OTA is urgently required in view of the higher vulnerability of infants than other age groups to the adverse effects of mycotoxins. For CIT, the ALARA principle should be adopted for foods consumed by IYC in addition to routine monitoring and risk assessment of all mycotoxins including T-2 and HT-2 toxins. Furthermore, awareness/educational interventions are required to enhance caregiver adherence to consumption advice for specific foods while adopting the grain replacement technique during formulation of the foods.

Conflicts of interest

The authors declare they have no competing financial interests.

Acknowledgements

This work was supported by the European Union's Horizon 2020 research and innovation programme (grant agreement No. 692195 (MultiCoop)), and the National Research Foundation of South Africa (grant unique numbers 84168 and 98692). The authors sincerely thank the households that provided food samples for this study. We appreciate the assistance of Ihuoma Chibuzor-Onyema during sampling and the technical assistance of Iviwe Notununu in molecular aspect of the study.

Appendix A. Supplementary data

Supplementary data related to this article can be found at <https://doi.org/10.1016/j.fct.2018.08.025>.

Transparency document

Transparency document related to this article can be found online at <https://doi.org/10.1016/j.fct.2018.08.025>.

References

- Abdus-Salaam, R., Fanelli, F., Atanda, O., Sulyok, M., Cozzi, G., Bavaro, S., et al., 2015. Fungal and bacterial metabolites associated with natural contamination of locally processed rice (*Oryza sativa* L.) in Nigeria. *Food Addit. Contam. A* 32 (6), 950–959.
- Adejumo, O., Atanda, O., Raiola, A., Somorin, Y., Bandyopadhyay, R., Ritieni, A., 2013. Correlation between aflatoxin M₁ content of breast milk, dietary exposure to aflatoxin B₁ and socioeconomic status of lactating mothers in Ogun State, Nigeria. *Food Chem. Toxicol.* 56, 171–177.
- Adetunji, M.C., Atanda, O.O., Ezekiel, C.N., 2017. Risk assessment of mycotoxins in stored maize grains consumed by infants and young children in Nigeria. *Children* 4, 58.
- Adetunji, M.C., Atanda, O.O., Ezekiel, C.N., Ogara, I.M., 2014a. The distribution and mycotoxigenicity of fungal isolates of stored maize grains from five agro-ecological zones of Nigeria. *Mycotoxicology* 1, 19–28.
- Adetunji, M.C., Atanda, O.O., Ezekiel, C.N., Sulyok, M., Warth, B., Beltran, E., et al., 2014b. Fungal and bacterial metabolites of stored maize (*Zea mays*, L.) from five agro-ecological zones of Nigeria. *Mycotoxin Res.* 30, 89–102.
- Alvito, P.C., Sizoo, E.A., Almeida, C.M.M., Egmond, H.P.V., 2010. Occurrence of

- afatoxins and ochratoxin A in baby foods in Portugal. *Food Anal. Methods* 3, 22–30.
- Bandyopadhyay, R., Kumar, M., Leslie, J.F., 2007. Relative severity of aflatoxin contamination of cereal crops in West Africa. *Food Addit. Contam.* 24, 1109–1114.
- Baydar, T., Erkekoglu, P., Sipahi, H., Sahin, G., 2007. Aflatoxin B₁, M₁ and ochratoxin A levels in infant formulae and baby foods marketed in Ankara, Turkey. *J. Food Drug Anal.* 15 (1), 89–92.
- Benford, D., Bolger, P.M., Carthew, P., Coulet, M., DiNovi, M., Leblanc, J., 2010. Application of the margin of exposure (MOE) approach to substances in food that are genotoxic and carcinogenic. *Food Chem. Toxicol.* 8, S2–S24.
- Blessa, J., Marín, R., Lino, C.M., Mañes, J., 2012. Evaluation of enniatins A, A₁, B, B₁ and beauvericin in Portuguese cereal-based foods. *Food Addit. Contam.* 29, 1727–1735 2012.
- Bouslimi, A., Bouaziz, C., Ayed-Boussema, I., Hassen, W., Bacha, H., 2008. Individual and combined effects of ochratoxin A and citrinin on viability and DNA fragmentation in cultured Vero cells and on chromosome aberrations in mice bone marrow cells. *Toxicology* 251, 1–7.
- Braun, D., Ezekiel, C.N., Abia, W.A., Wisgrill, L., Degen, G.H., Turner, P.C., Marko, D., Warth, B., Preprint 2018. Unraveling early-life mycotoxin exposures via LC-MS/MS breast milk analysis. https://chemrxiv.org/articles/Unraveling_Early-Life_Mycotoxin_Exposures_via_LC-MS_MS_Breast_Milk_Analysis/6391121.
- Chen, C., Mitchell, N.J., Gratz, J., Houpt, E.R., Gong, Y., Egner, P.A., et al., 2018. Exposure to aflatoxin and fumonisin in children at risk for growth impairment in rural Tanzania. *Environ. Int.* 115, 29–37.
- Creppy, E.E., 2002. Update of survey, regulation and toxic effects of mycotoxins in Europe. *Toxicol. Lett.* 127 (1–3), 19–28.
- Creppy, E.E., Chirappa, P., Baudrimont, I., Borracci, P., Moukha, S., Carratu, M.R., 2004. Synergistic effects of fumonisin B₁ and ochratoxin A: are *in vitro* cytotoxicity data predictive of *in vivo* acute toxicity? *Toxicology* 201, 115–123.
- Codex Alimentarius, 1989. Guidelines for the Simple Evaluation of Dietary Exposure to Food Additives CAC/GL 3-1989. Adopted 1989. Revision 2014. (Formerly Guidelines for the Simple Evaluation of Food Additive Intake). Codex Alimentarius International Food Standards. Food and Agriculture Organization of the United Nations (FAO), the World Health Organization (WHO) Available online. <http://www.fao.org/fao-who-codexalimentarius/codex-texts/guidelines/en/>.
- EC (European Commission), 2002. Commission Decision 2002/657 of 12 August 2002 Implementing Council Directive 96/23/EC Concerning the Performance of Analytical Methods and the Interpretation of Results. OJ. EU. L221, pp. 8–36. Available online. <https://eur-lex.europa.eu/>.
- EC (European Commission), 2013. Commission Recommendation of 27 March 2013 on the Presence of T-2 and HT-2 Toxin in Cereals and Cereal Products (2013/165/EU). European Commission. OJ L 91, pp. 12–15. Available online. <https://eur-lex.europa.eu/>.
- EC (European Commission), 2006. Commission Regulation (EC) No 1881/2006 of 19 December 2006 Setting Maximum Levels for Certain Contaminants in Foodstuffs. 364. OJ L, pp. 5–24. Available online. <https://eur-lex.europa.eu/>.
- EFSA (European Food Safety Authority), 2018a. Draft Guidance on Harmonised Methodologies for Human Health, Animal Health and Ecological Risk Assessment of Combined Exposure to Multiple Chemicals. For Public Consultation. EFSA Scientific Committee. <http://www.efsa.europa.eu/en/press/news/180626>.
- EFSA (European Food Safety Authority), 2007. Opinion of the Scientific Panel on Contaminants in the Food Chain on a request from the commission related to the potential increase of consumer health risk by a possible increase of the existing maximum levels for aflatoxins in almonds, hazel nuts and pistachios and derived products. EFSA J. 446, 1–127. <https://efsa.onlinelibrary.wiley.com/journal/18314732>.
- EFSA (European Food Safety Authority), 2017. Scientific opinion on the appropriateness to set a group health based guidance value for T2 and HT2 toxin and its modified forms. EFSA J. 15 (1), 4655. <https://www.efsa.europa.eu/en/efsajournal/pub/4655>.
- EFSA (European Food Safety Authority), 2014. Scientific Opinion on the risks to human and animal health related to the presence of beauvericin and enniatins in food and feed. EFSA J. 12 (8), 3802. <https://efsa.onlinelibrary.wiley.com/journal/18314732>.
- EFSA (European Food Safety Authority), 2018b. Scientific Opinion on the risks to human and animal health related to the presence of moniliformin in food and feed. EFSA J. 16 (3), 5082. <https://efsa.onlinelibrary.wiley.com/journal/18314732>.
- EFSA (European Food Safety Authority), 2012. Scientific Opinion on the risks for public and animal health related to the presence of citrinin in food and feed. EFSA J. 10 (3), 2605. <https://efsa.onlinelibrary.wiley.com/journal/18314732>.
- EFSA (European Food Safety Authority), 2010. Scientific report of EFSA: management of left-censored data in dietary exposure assessment of chemical substances. EFSA J. 8 (3), 1557. <https://efsa.onlinelibrary.wiley.com/journal/18314732>.
- EFSA (European Food Safety Authority), 2005. Opinion of the scientific committee on a request from EFSA related to A Harmonised approach for risk assessment of substances which are both genotoxic and carcinogenic. EFSA J. 282, 1–31. <https://efsa.onlinelibrary.wiley.com/journal/18314732>.
- Er, B., Demirhan, B., Yentur, G., 2014. Investigation of aflatoxin M₁ levels in infant follow-on milks and infant formulas sold in the markets of Ankara, Turkey. *J. Dairy Sci.* 97 (6), 3328–3331.
- Ezekiel, C.N., Sulyok, M., Frisvad, J.C., Somorin, Y.M., Warth, B., Houbraken, J., et al., 2013. Fungal and mycotoxin assessment of dried edible mushroom in Nigeria. *Int. J. Food Microbiol.* 162, 231–236.
- Ezekiel, C.N., Sulyok, M., Somorin, Y., Odutayo, F.I., Nwabeke, S.U., Balogun, A.F., et al., 2016. Mould and mycotoxin exposure assessment of melon and bush mango seeds, two common soup thickeners consumed in Nigeria. *Int. J. Food Microbiol.* 237, 83–91.
- Ezekiel, C.N., Sulyok, M., Warth, B., Odebo, A.C., Krska, R., 2012. Natural occurrence of mycotoxins in peanut cake from Nigeria. *Food Contr.* 27, 338–342.
- Ezekiel, C.N., Warth, B., Ogara, I.M., Abia, W.A., Ezekiel, V.C., Atehnkeng, J., et al., 2014. Mycotoxin exposure in rural residents in northern Nigeria: a pilot study using multi-urinary biomarkers. *Environ. Int.* 66, 138–145.
- Fernandes, A.R., Tlustos, C., Rose, M., Smith, F., Carr, M., Panton, S., 2011. Polychlorinated naphthalenes (PCNs) in Irish foods: occurrence and human dietary exposure. *Chemosphere* 85, 322–328.
- Fuchs, R., Peraica, M., 2005. Ochratoxin A in human kidney diseases. *Food Addit. Contam.* 22 (1), 53–57.
- Gautier, M., Normand, A., L'Ollivier, C., Cassagne, C., Reynaud-Gaubert, M., Dubus, J., et al., 2016. *Aspergillus tubingensis*: a major filamentous fungus found in the airways of patients with lung disease. *Med. Mycol.* 54 (5), 459–470.
- Geary, P.A., Chen, G., Kimanya, M.E., Shirima, C.P., Oplawska-Stachowiak, M., Elliott, C.T., et al., 2016. Determination of multi-mycotoxin occurrence in maize based porridges from selected regions of Tanzania by liquid chromatography tandem mass spectrometry (LC-MS/MS), a longitudinal study. *Food Contr.* 68, 337–343.
- Glass, N.L., Donaldson, G.C., 1995. Development of primer sets designed for use with the PCR to amplify conserved genes from filamentous ascomycetes. *Appl. Environ. Microbiol.* 61, 1323–1330.
- Golli-Bennour, E.E., Kouidhi, B., Bouslimi, A., Abid-Essefi, S., Hassen, W., Bacha, H., 2010. Cytotoxicity and genotoxicity induced by aflatoxin B₁, ochratoxin A, and their combination in cultured Vero cells. *J. Biochem. Mol. Toxicol.* 24, 42–50.
- Gong, Y., Cardwell, K., Hounsa, A., Egal, S., Turner, P.C., Hall, A.J., 2002. Dietary aflatoxin exposure and impaired growth in young children from Benin and Togo: cross sectional study. *Br. Med. J.* 325, 20–21.
- Gong, Y.Y., Egal, S., Hounsa, A., Turner, P.C., Hall, A.J., Cardwell, K., et al., 2003. Determinants of aflatoxin exposure in young children from Benin and Togo, West Africa: the critical role of weaning. *Int. J. Epidemiol.* 32, 556–562.
- Gong, Y., Hounsa, A., Egal, S., Turner, P.C., Sutcliffe, A.C., Hall, A.J., 2004. Post-weaning exposure to aflatoxin results in impaired child growth: a longitudinal study in Benin, West Africa. *Environ. Health Perspect.* 112, 1334–1338.
- Gong, Y.Y., Watson, S., Routledge, M.N., 2016. Aflatoxin exposure and associated human health effects, a review of epidemiological studies. *Food Saf* 4 (1), 14–27.
- Hong, K.M., Burdick, M.D., Phillips, R.J., Heber, D., Strieter, R.M., 2005. Characterization of human fibrocytes as circulating adipocyte progenitors and the formation of human adipose tissue in SCID mice. *Faseb. J.* 19, 2029–2031.
- Hong, S.-B., Kim, D.-H., Samson, R.A., 2015. *Aspergillus* associated with *meju*, a fermented soybean starting material for traditional soy sauce and soybean paste in Korea. *MYCOBIOLOGY* 43 (3), 218–224.
- Hove, M., De Boevre, M., Lachat, C., Jacxsens, L., Nyanga, L.K., De Saeger, S., 2016. Occurrence and risk assessment of mycotoxins in subsistence farmed maize from Zimbabwe. *Food Contr.* 69, 36–44.
- Hubka, V., Kolarik, M., 2012. Beta-tubulin paralogue *tubC* is frequently misidentified as the *benA* gene in *Aspergillus* section *Nigri* taxonomy: primer specificity testing ad taxonomic consequences. *Persoonia* 29, 1–10.
- IARC (International Agency for Research on Cancer), 1993. Some Naturally Occurring Substances: Food Items and Constituents, Heterocyclic Amines and Mycotoxins. IARC Monographs on Evaluation of Carcinogenic Risk to Humans. 56 International Agency for Research on Cancer, Lyon, France.
- IARC (International Agency for Research on Cancer), 2002. Some traditional herbal medicines, some mycotoxins, naphthalene, and styrene. IARC Monogr. Eval. Carcinog. Risk Chem. Humans 82, 171–300.
- IARC (International Agency for Research on Cancer), 2015. Mycotoxin control in low and middle income countries. In: Wild, C.P., Miller, J.D., Groopman, J.D. (Eds.), IARC Working Group Report No. 9, (Lyon).
- IPCS/GEMS, 1995. International Programme on Chemical Safety. Food Euro Workshop on Reliable Evaluation of Low Level Contamination of Food. Appendix 5, Kulmbach, Germany, May 1995.
- IPCS, 2009. Principles and Methods for the Risk Assessment of Chemicals in Food. A joint publication of the Food and Agriculture Organization of the United Nations and the World Health Organization Environmental Health Criteria 240. <http://www.who.int/foodsafety/publications/chemical-food/en/>.
- JECFA (Joint FAO/WHO Expert Committee on Food Additives), 2011. Evaluation of Certain Food Additives and Contaminants: Forty-ninth Report of the Joint FAO/WHO Expert Committee on Food Additives. WHO Technical Report Series No 884. WHO, Geneva, Switzerland. http://whqlibdoc.who.int/trs/WHO_TRS_884.pdf, Accessed date: 10 June 2013.
- JECFA (Joint FAO/WHO Expert Committee on Food Additives), 2008. Safety Evaluation of Certain Food Additives and Contaminants. Prepared by the Sixty-eighth Meeting of the Joint FAO/WHO Expert Committee on Food Additives (JECFA). JECFA Monographs. Food and Agriculture Organization of the United Nations, World Health Organization, IPCS - International Programme on Chemical Safety, WHO Food Additives Series No. 59, World Health Organization, Geneva. <http://www.who.int/foodsafety/publications/monographs/en/>.
- Jestoi, M., 2008. Emerging *Fusarium*-mycotoxins fusaproliferin, beauvericin, enniatins, and moniliformin: a review. *Crit. Rev. Food Sci. Nutr.* 48 (1), 21–49.
- Juan, C., Mañes, J., Raiola, A., Ritieni, A., 2013. Evaluation of beauvericin and enniatins in Italian cereal products and multicereal food by liquid chromatography coupled to triple quadrupole mass spectrometry. *Food Chem.* 140 (4), 755–762.
- Juan, C., Raiola, A., Mães, J., Ritieni, A., 2014. Presence of mycotoxins in commercial infant formulas and baby foods from Italian market. *Food Contr.* 39, 227–236.
- Jurjevic, Z., Peterson, S.W., Stea, G., Solfrizzo, M., Varga, J., Hubka, V., et al., 2012. Two novel species of *Aspergillus* section *Nigri* form indoor air. *IMA Fungus* 3 (2), 159–173.
- Kabak, B., 2009. Ochratoxin A in cereal-derived products in Turkey: occurrence and exposure assessment. *Food Chem. Toxicol.* 47, 348–352.
- Kamala, A., Kimanya, M., Lachat, C., Jacxsens, L., Haesaert, G., Kolsteren, P., et al., 2016. Risk of exposure to multiple mycotoxins from maize-based complementary foods in

- Tanzania. *J. Agric. Food Chem.* 65 (33), 7106–7114.
- Kamala, A., Ortiz, J., Kimanya, M., Haesaert, G., Donoso, S., Tiisekwa, B., et al., 2015. Multiple mycotoxin co-occurrence in maize grown in three agro-ecological zones of Tanzania. *Food Contr.* 54, 208–215.
- Kanungo, L., Bhand, S., 2014. A survey of aflatoxin M₁ in some commercial milk samples and infant formula milk samples in Goa, India. *Food Agric. Immunol.* 25 (4), 467–476.
- Kimanya, M.E., De Meulenaer, B., Tiisekwa, B., Ndomondo-Sigonda, M., Devlieghere, F., Van Camp, J., et al., 2008. Co-occurrence of fumonisins with aflatoxins in home-stored maize for human consumption in rural villages of Tanzania. *Food Addit. Contam.* 25 (11), 1353–1364.
- Kimanya, M.E., Meulenaer, B.D., Baert, K., Tiisekwa, B., Camp, J.V., Samapundo, S., et al., 2009. Exposure of infants to fumonisins in maize-based complementary foods in rural Tanzania. *Mol. Nutr. Food Res.* 53, 667–674.
- Kimanya, M.E., Meulenaer, B.D., Baert, K., Tiisekwa, B., Camp, J.V., Samapundo, S., et al., 2010. Fumonisin exposure through maize in complementary foods is inversely associated with linear growth of infants in Tanzania. *Mol. Nutr. Food Res.* 54, 1659–1667.
- Kimanya, M.E., Shirima, C.P., Magohac, H., Shewiyo, D.H., Meulenaer, B.D., Kolsteren, P., et al., 2014. Co-exposures of aflatoxins with deoxynivalenol and fumonisins from maize based complementary foods in Rombo, Northern Tanzania. *Food Contr.* 41, 76–81.
- Klarić, M.S., Rasic, D., Peraiaca, M., 2013. Deleterious effects of mycotoxin combinations involving ochratoxin A. *Toxins* 5, 1965–1987.
- Klarić, M.S., Rumora, L., Ljubanović, D., Pepeljnjak, S., 2008. Cytotoxicity and apoptosis induced by fumonisin B₁, beauvericin and ochratoxin A in porcine kidney PK15 cells: effects of individual and combined treatment. *Arch. Toxicol.* 82, 247–255.
- Klarić, M.S., Zeljezic, D., Rumora, L., Peraica, M., Pepeljnjak, S., Domijan, A.M., 2012. A potential role of calcium in apoptosis and aberrant chromatin forms in porcine kidney PK15 cells induced by individual and combined ochratoxin A and citrinin. *Arch. Toxicol.* 86, 97–107.
- Lee, H.B., Patriarca, A., Magan, N., 2015. *Alternaria* in food: ecophysiology, mycotoxin production and toxicology. *Synapse* 43 (2), 93–106.
- Liu, B.H., Yu, F.Y., Wu, T.S., Li, S.Y., Su, M.C., Wang, M.C., et al., 2003. Evaluation of genotoxic risk on oxidative DNA damage in mammalian cells exposed to mycotoxins, patulin and citrinin. *Toxicol. Appl. Pharmacol.* 191, 255–263.
- Logrieco, A.F., Haidukowski, M., Susca, A., Mulè, G., Munkvold, G.P., Moretti, A., 2014. *Aspergillus* section *Nigri* as contributor of fumonisin B₂ contamination in maize. *Food Addit. Contam.* 31 (1), 149–155.
- Lombard, M.J., 2014. Mycotoxin exposure and infant and young child growth in Africa: what do we know? *Ann. Nutr. Metab.* 64 (2), 42–52.
- Malachová, A., Sulyok, M., Beltrán, E., Berthiller, F., Krska, R., 2014. Optimization and validation of a quantitative liquid chromatography–tandem mass spectrometric method covering 295 bacterial and fungal metabolites including all regulated mycotoxins in four model food matrices. *J. Chromatogr. A* 1362, 145–156.
- Marin, S., Sanchis, V., Vinas, I., Canela, R., Magan, N., 1995. Effect of water activity and temperature on growth and fumonisin B₁ and B₂ production by *Fusarium proliferatum* and *F. moniliforme* on maize grain. *Lett. Appl. Microbiol.* 21, 296–301.
- Marin, S., Villalba, P., Diaz-Ferrero, J., Font, G., Yusà, V., 2011. Congener profile, occurrence and estimated dietary intake of dioxins and dioxin-like PCBs in foods marketed in the region of Valencia (Spain). *Chemosphere* 82, 1253–1261.
- Meucci, V., Razzuoli, E., Soldani, G., Massari, F., 2010. Mycotoxin detection in infant formula milks in Italy. *Food Addit. Contam.* 27 (1), 64–71.
- Missmer, S.A., Suarez, L., Felkner, M., Wang, E., Merrill Jr., A.H., Rothman, K.J., et al., 2006. Exposure to fumonisins and the occurrence of neural tube defects along the Texas–Mexico border. *Environ. Health Perspect.* 114, 237–241.
- Ogara, I.M., Zarafi, A.B., Alabi, O., Banwo, O., Ezekiel, C.N., Warth, B., et al., 2017. Mycotoxin patterns in ear rot-infected maize: a comprehensive case study in Nigeria. *Food Contr.* 73, 1159–1168.
- Okeke, C.A., Ezekiel, C.N., Nwangburuka, C.C., Sulyok, M., Ezeamagu, C.O., Adeleke, R.A., et al., 2015. Bacterial diversity and mycotoxin reduction during maize fermentation (steeping) for *ogi* production. *Front. Microbiol.* 6, 1402.
- Okeke, C.A., Ezekiel, C.N., Sulyok, M., Ogunremi, O.R., Ezeamagu, C.O., Sarkanj, B., et al., 2018. Traditional processing impacts mycotoxin levels and nutritional value of *ogi* – a maize-based complementary food. *Food Contr.* 86, 224–233.
- Okoth, S.A., Ohingo, M., 2004. Dietary aflatoxin exposure and impaired growth in young children from Kisumu District, Kenya: cross sectional study. *Afr. J. Health Sci.* 11 (1–2), 43–54.
- Oladipo, O.G., Awotoye, O.O., Olayinka, A., Ezeokoli, O.T., Maboeta, M.S., Bezuidenhout, C.C., 2016. Heavy metal tolerance potential of *Aspergillus* strains isolated from mining sites. *Ann. Finance* 20 (4), 287–297.
- Onis, M., Branca, F., 2016. Childhood stunting: a global perspective. *Matern. Child Nutr.* 12 (1), 12–26.
- Ono, E.Y.S., Stugiura, Y., Homechin, M., Kamogae, M., Vizzoni, E., Ueno, Y., et al., 1999. Effect of climatic conditions on natural mycoflora and fumonisins in freshly harvested corn of the State of Paraná, Brazil. *Mycopathologia* 147, 139–148.
- Ostry, V., 2009. *Alternaria* mycotoxins: an overview of chemical characterization, producers, toxicity, analysis and occurrence in food stuffs. *World Mycotoxin J.* 1 (2), 175–188.
- Oyedele, O.A., Ezekiel, C.N., Sulyok, M., Adetunji, M.C., Warth, B., Atanda, O.O., et al., 2017. Mycotoxin risk assessment for consumers of groundnut in domestic markets in Nigeria. *Int. J. Food Microbiol.* 251, 24–32.
- Rheeder, J.P., Marasas, W.F.O., Thiel, P.G., Sydenham, E.W., Shepherd, G.S., Van Schalkwyk, D.J., 1992. *Fusarium moniliforme* and fumonisins in corn in relation to human esophageal cancer in Transkei. *Phytopathology* 82, 353–357.
- Rosa, C.A.R., Magnoli, C.E., Fraga, M.E., Dalcerio, A.M., Santana, D.M.N., 2004. Occurrence of ochratoxin A in wine and grape juice marketed in Rio de Janeiro, Brazil. *Food Addit. Contam.* 21, 358–364.
- Rychlik, M., Lepper, H., Weidner, C., Asam, S., 2016. Risk evaluation of the *Alternaria* mycotoxin tenuazonic acids in foods for adult and infants and subsequent risk management. *Food Contr.* 68, 181–185.
- Samson, R.A., Hoekstra, E.S., Frisvad, J.S., Filtenborg, O., 1995. Methods for the detection and isolation of food-borne fungi. In: Samson, R.A., Hoekstra, E.S., Frisvad, J.C., Filtenborg, O. (Eds.), *Introduction to Foodborne Fungi*. CentraalBureau voor Schimmelcultures, The Netherlands, pp. 235–242.
- Sarubbi, F.A., Kopf, H.B., Wilson, M.B., McGinnis, M.R., Rutala, W.A., 1982. Increased recovery of *Aspergillus flavus* from respiratory specimens during hospital construction. *Am. Rev. Respir. Dis.* 125 (1), 33–38.
- Shirima, P.C., Kimanya, E.M., Routledge, M.N., Srey, C., Kinabo, L.J., Humpf, H., et al., 2015. A prospective study of growth and biomarkers of exposure to aflatoxins and fumonisins during childhood in Tanzania. *Environ. Health Perspect.* 123, 173–178.
- Smith, C.M., Madec, S., Coton, E., Hymery, N., 2016. Natural co-occurrence of mycotoxins in foods and feeds and their *in vitro* combined toxicological effects. *Toxins* 8 (4), 94.
- Stefanovic, V., Toncheva, D., Atanasova, S., Polenakovic, M., 2006. Etiology of Balkan endemic nephropathy and associated urothelial cancer. *Am. J. Nephrol.* 26 (1), 1–11.
- Stoev, S.D., Denev, S., Dutton, M., Nkosi, B., 2009. Cytotoxic effect of some mycotoxins and their combinations on human peripheral blood mononuclear cells as measured by MTT assay. *Open Toxicol. J.* 2, 1–8.
- Sulyok, M., Krska, R., Schuhmacher, R., 2007. A liquid chromatography/tandem mass spectrometric multi-mycotoxin method for the quantification of 87 analytes and its application to semi-quantitative screening of moldy food samples. *Anal. Bioanal. Chem.* 389, 1505–1523.
- Tam, J., Mankotia, M., Mably, M., Pantazopoulos, P., Neil, R.J., Calway, P., et al., 2006. Survey of breakfast and infant cereals for aflatoxins B₁, B₂, G₁ and G₂. *Food Addit. Contam.* 23 (7), 693–699.
- Törnkvist, A., Glynn, A., Aune, M., Darnerud, P.O., Ankarberg, E.H., 2011. PCDD/F, PCB, PBDE, HBCD and chlorinated pesticides in a Swedish market basket from 2005 — levels and dietary intake estimations. *Chemosphere* 83, 193–199.
- Tsakiris, I.N., Tzatzarakis, M.N., Alegakis, A.K., Vlachou, M.I., Renieri, E.A., Tsatsakis, A.M., 2013. Risk assessment scenarios of children's exposure to aflatoxin M₁ residues in different milk types from the Greek market. *Food Chem. Toxicol.* 56, 261–265.
- Turner, P.C., 2013. **The molecular epidemiology of chronic aflatoxin driven impaired child growth.** *Sci. Tech. Rep.* 2013. <https://doi.org/10.1155/2013/152879>.
- Turner, P.C., Collinson, A.C., Cheung, Y.B., Gong, Y.Y., Hall, A.J., Prentice, A.M., et al., 2007. Aflatoxin exposure in utero causes growth faltering in Gambian infants. *Int. J. Epidemiol.* 36, 1119–1125.
- Turner, P.C., Moore, S.E., Hall, A.J., Prentice, A.M., Wild, C.P., 2003. Modification of immune function through exposure to dietary aflatoxin in Gambian children. *Environ. Health Perspect.* 111, 217–220.
- UNICEF (United Nations Children's Emergency Fund), 2012. UNICEF-WHO-World Bank Joint Child Malnutrition Estimates. WHO, Geneva.
- Vejdovszky, K., Hahn, K., Braun, D., 2017a. Synergistic estrogenic effects of *Fusarium* and *Alternaria* mycotoxins *in vitro*. *Arch. Toxicol.* 91 (3), 1447.
- Vejdovszky, K., Hahn, K., Warth, B., Marko, D., 2016. Co-occurring mycoestrogens formed by *Fusarium* and *Alternaria* species mediate synergistic estrogenic effects. *Toxicol. Lett.* 258, S55.
- Vejdovszky, K., Sack, M., Jarolim, K., Aichinger, G., Somoza, M.M., Marko, D., 2017b. *In vitro* combinatory effects of the *Alternaria* mycotoxins alternariol and altretoxin II and potentially involved miRNAs. *Toxicol. Lett.* 267, 45–52.
- Viquez, O.M., Castell-Perez, M.E., Shelby, R.A., 1996. Occurrence of fumonisin B₁ in maize grown in Costa Rica. *J. Agric. Food Chem.* 44, 2789–2791.
- Visagie, C.M., Hirooka, Y., Tanney, J.B., Whitfield, E., Mwangi, K., Meijer, M., et al., 2014. *Aspergillus*, *Penicillium* and *Talaromyces* isolated from dust samples collected around the world. *Stud. Mycol.* 78, 63–139.
- Visconti, A., 1996. Fumonisin in maize genotypes grown in various geographic areas. In: Jackson, L.S., De Vries, J.W., Bullerman, L.B. (Eds.), *Fumonisin in Food*. Plenum Press, New York, pp. 193–204.
- White, T.J., Bruns, T.D., Lee, S.B., Taylor, J.W., 1990. Amplification and direct sequencing of fungal ribosomal RNA genes for phylogenetics. In: Innis, M.A., Gelfand, D.H., Shinsky, T.J. (Eds.), *PCR Protocol: a Guide to Methods and Applications*. Academic Press Inc, New York, pp. 315–322.
- World Health Organization, 2012. **Improving maternal, newborn and child nutrition in Nigeria.** Available at: <http://extranet.who.int/nutrition/gina/en/node/11463>.
- World Health Organization, 2006. **Principles for evaluating health risks in children associated with exposure to chemicals.** *Environmental Health Criteria* 237. Available at: <http://www.inchem.org/documents/ehc/ehc/ehc237.pdf>.
- Zain, M.E., 2011. Impact of mycotoxins on humans and animals. *J. Saudi Chem. Soc.* 15, 129–144.