

Aerosol and Air Quality Research, 13: 709–720, 2013
Copyright © Taiwan Association for Aerosol Research
ISSN: 1680-8584 print / 2071-1409 online
doi: 10.4209/aaqr.2012.08.0212



Influences of Commuting Mode, Air Conditioning Mode and Meteorological Parameters on Fine Particle (PM_{2.5}) Exposure Levels in Traffic Microenvironments

Da-Lei Wu¹, Mang Lin¹, Chuen-Yu Chan^{1,2*}, Wei-Zhong Li³, Jun Tao⁴, You-Ping Li^{1,5}, Xue-Fang Sang¹, Chun-Wei Bu¹

¹ School of Environmental Science and Engineering, Sun Yat-sen University, Guangzhou 510275, China

² Faculty of Science and Engineering, University of Nottingham Ningbo, Ningbo 315100, China

³ Institute of Environmental Science, Nanhai District, Foshan 528299, China

⁴ South China Institute of Environmental Sciences, Guangzhou 510655, China

⁵ College of Chemistry and Chemical Engineering, China West Normal University, Nanchong 637009, China

ABSTRACT

With the aim of determining the impacts of various factors on commuter exposure to fine particulate matter (PM_{2.5}), a series of field studies were carried out to measure commuter exposure to PM_{2.5} on six major commuting modes (in-cabin mode: bus, taxi and metro; on-roadway mode: walking, bicycle and motorcycle) in a highly industrialized city in the Pearl River Delta, China. The results showed that the exposure level was greatly influenced by the commuter mode, with the on-roadway mode showing a higher PM_{2.5} concentration (76 µg/m³). An experiment with the taxi mode suggested that the use of air-conditioning can effectively reduce exposure levels in most cases (by at least 83%). Apart from traffic-related emissions, ambient PM_{2.5} concentration also had important impacts on exposure levels in most commuting modes, which was further ascertained by the seasonal variations in exposure levels and their significant correlations ($p < 0.05$) with meteorological parameters (temperature, relative humidity, wind speed and direction). The results of a General Linear Model analysis show that temperature, traffic mode and wind speed were significant factors that explained 27.3% of variability for the in-cabin mode, while relative humidity and wind speed were the significant determinants for the on-roadway mode, which contributed 14.1% of variability. In addition, wind direction was also an important determinant for both in-cabin and on-roadway modes. This study has some valuable implications that can help commuters to adopt appropriate travel behavior to reduce their personal exposure to such pollutants.

Keywords: Commuter; Exposure; Traffic modes; PM_{2.5}.

INTRODUCTION

The adverse health effects of fine particulate matter (PM_{2.5}) have been identified by recent epidemiological studies. Short- and long-term exposure to PM_{2.5} is directly associated with various health effects, including respiratory and cardiovascular diseases (Pope III *et al.*, 2004; Dominici *et al.*, 2006). Health studies also suggest that exposure to PM_{2.5} is indirectly related to various diseases, especially cancer (Pope III *et al.*, 2002; Vinzents *et al.*, 2005). Additionally, exposure to PM_{2.5} has been linked to induction of oxidative DNA damage in toxicological studies (Risom *et*

al., 2005). The implication is that it has become important to precisely understand the PM_{2.5} exposure levels in various microenvironments. Traffic microenvironment has received particular attention because PM_{2.5} concentration is often substantially higher than ambient levels on which air quality standard is assessed (Adams *et al.*, 2001; Kam *et al.*, 2011; Cheng *et al.*, 2012a). The importance is also highlighted by the fact that people can spend a long time in this microenvironment (including commuting in motor vehicles and on bicycle, walking along and waiting on busy street).

Exposure level in traffic microenvironment is influenced by transportation mode (Briggs *et al.*, 2008; Kaur and Nieuwenhuijsen, 2009; Kingham *et al.*, 2011), air conditioning (A/C) mode (Chan *et al.*, 2002; Chan and Chung, 2003; Esber and El-Fadel, 2008; Geiss *et al.*, 2010; Knibbs *et al.*, 2010) and meteorological parameters (Adams *et al.*, 2001; Kaur and Nieuwenhuijsen, 2009; Cheng and

* Corresponding author. Tel.: +86 (0) 574 8818 3049;

Fax: +86 (0) 574 8818 0175

E-mail address: John.Chan@nottingham.edu.cn

Li, 2010; Buonanno *et al.*, 2011). However, it is currently difficult to precisely quantify the differences in air pollution exposure among different modes of transport. The influences of A/C mode and meteorological parameters on commuter exposure were also incompletely understood. Furthermore, although numerous experimental studies were conducted in developed countries in the past 20 years (e.g., Bevan *et al.*, 1991; Adams *et al.*, 2001; Kaur *et al.*, 2005; Fondelli *et al.*, 2008; Boogaard *et al.*, 2009; Geiss *et al.*, 2010; Strak *et al.*, 2010; Buonanno *et al.*, 2011; Kim *et al.*, 2011; Dons *et al.*, 2012), corresponding researches were limited in developing countries (Gómez-Perales *et al.*, 2004, 2007; Murruni *et al.*, 2009; Apte *et al.*, 2011; Mugica-Álvarez *et al.*, 2011; Huang *et al.*, 2012). Developing countries are facing serious air pollution problems from both industrialization and urbanization processes (Economopoulou and Economopoulos, 2002; Afroz *et al.*, 2003; Wang *et al.*, 2003; Han and Nacher, 2006; Colbeck *et al.*, 2011; Cao *et al.*, 2012), and thus the traffic microenvironment may be more complicated.

To better address these questions, a wider range of experiments, which covered six major commuting modes and two different seasons, were conducted in an industrial city (Foshan) located at the Pearl River Delta (PRD), which is one of the most important industrial regions in China. Foshan city was greatly affected by both industrial and vehicle emissions (Wan *et al.*, 2011). The primary aim of this work was to present the commuter PM_{2.5} exposure level in this highly polluted city. Systematic comparison on exposure levels among different modes of transport was performed. Influence factors would be also determined and quantified. Results from this study provided important implication for commuters on how to choose appropriate travel behavior to reduce their personal exposure.

METHODOLOGY

Field Study Design

Commuter exposures to PM_{2.5} in six major traffic modes (bus, taxi, metro, walking, bicycle and motorcycle) in this study area were measured. We identified bus, taxi and metro as in-cabin mode, and walking, bicycle and motorcycle as on-roadway mode according to the different features of transportation modes and possible mode-specific influencing variables (Knibbs *et al.*, 2011). The study was conducted in the urban area of Foshan city in spring (5–10 March and 28 March–3 April) and summer (5–11 July) of 2011. In total, in-cabin mode was sampled for 20 days, and on-roadway mode for 14 days (data during 5–10 March was not available). Two portable real-time PM monitors (MicroDust pro, Casella CEL, Bedford, UK) were carried on the back of experimenters, who behaved as the same as common passengers. The PM_{2.5} adaptors were put at the level of breathing zone. Detailed sampling method will be illustrated in next section. Experimenters took taxi randomly and ran on a fixed line with the length of 12.2 km for two cycles. Windows were opened without A/C (non-A/C mode) at the first cycle, while A/C was turned on with windows closed at the second cycle (A/C mode). Three different bus lines with the average length of 13.4 km were selected for bus

mode. For metro, the only metro line (16.6 km) was chosen. As the ventilation mode for bus and metro were not under the control of experimenters, study of switching A/C mode was not applicable in these two in-cabin modes. Regarding the on-roadway mode, studies were conducted on two main roads with a total of 5.0 km. The detailed features of above-mentioned routes were shown in Fig. 1. All of the field samplings were carried out in the morning (0700–1200) and afternoon (1400–1900) in weekday. The elapsed time of one sample (i.e., one trip) ranged from 20–40 minutes and 30–60 minutes for on-roadway and in-cabin mode, respectively. Bus, taxi and motorcycle were powered by diesel, compressed natural gas, and regular unleaded gasoline, respectively. Smoking inside the public transportation modes was strictly prohibited in this region and we did not find any violation during the sampling period.

With an aim to better interpret our data, hourly ambient PM_{2.5} concentration data during sampling period were obtained from two ambient air monitoring stations (AMS), which were operated by local Environmental Protection Bureau (Fig. 1). These two stations were both placed on the rooftop of building, which are ~7 m above the ground level and more than 30 m away from main traffic roads. Concentration of PM_{2.5} was monitored by the Tapered Element Oscillating Microbalance (TEOM) method. More detailed description can be found in the work of Wan *et al.* (2011). The data from these two stations were averaged to represent the air quality over the study area. Hourly meteorological data (including temperature, relative humidity, wind speed and direction) during the sampling period were also obtained from the nearest weather station operated by local Meteorology Bureau (Fig. 1).

Sampling Method and Quality Assurance

The PM_{2.5} concentration was measured by MicroDust pro via a near forward angle light scattering technique. Detection limit of MicroDust pro was 1 µg/m³. A small personal sampling pump (D705-22, HARGRAVES, USA) was used to ensure a continuous airflow (3.5 L/min, stabilized by a flowmeter [Mini-Master, Dwyer Instrumens, Inc., USA]) through a photo detector. More detailed description of MicroDust pro can be found in Mohammadyan *et al.* (2010). As a quality control measurement, zero and span calibration of the monitor was performed before each survey trip. Briefly, purge bellows was used to inject clean air into the chamber for setting zero. An optical calibration filter (i.e., fixed reference) was used to confirm the factory calibration point for the instrument. Detailed procedure can be found in CASELLA CEL (2005). The monitor was turned on to stabilize for several minutes before start of sampling. Although this monitor was calibrated according to a known reference dust standard in factory, it was necessary to calibrate the response of the instrument because different dust types caused a different response from this instrument due to variation in particle size, refractive indices and color. MicroDust pro was calibrated against a mini-vol (5 L/min) air sampler, MINIVOL-TAS (AirMetrics Co., Oregon, USA) with sampling filters (Pure Quartz Filter, 47 mm, Whatman Inc., USA). These two samplers (MicroDust pro and

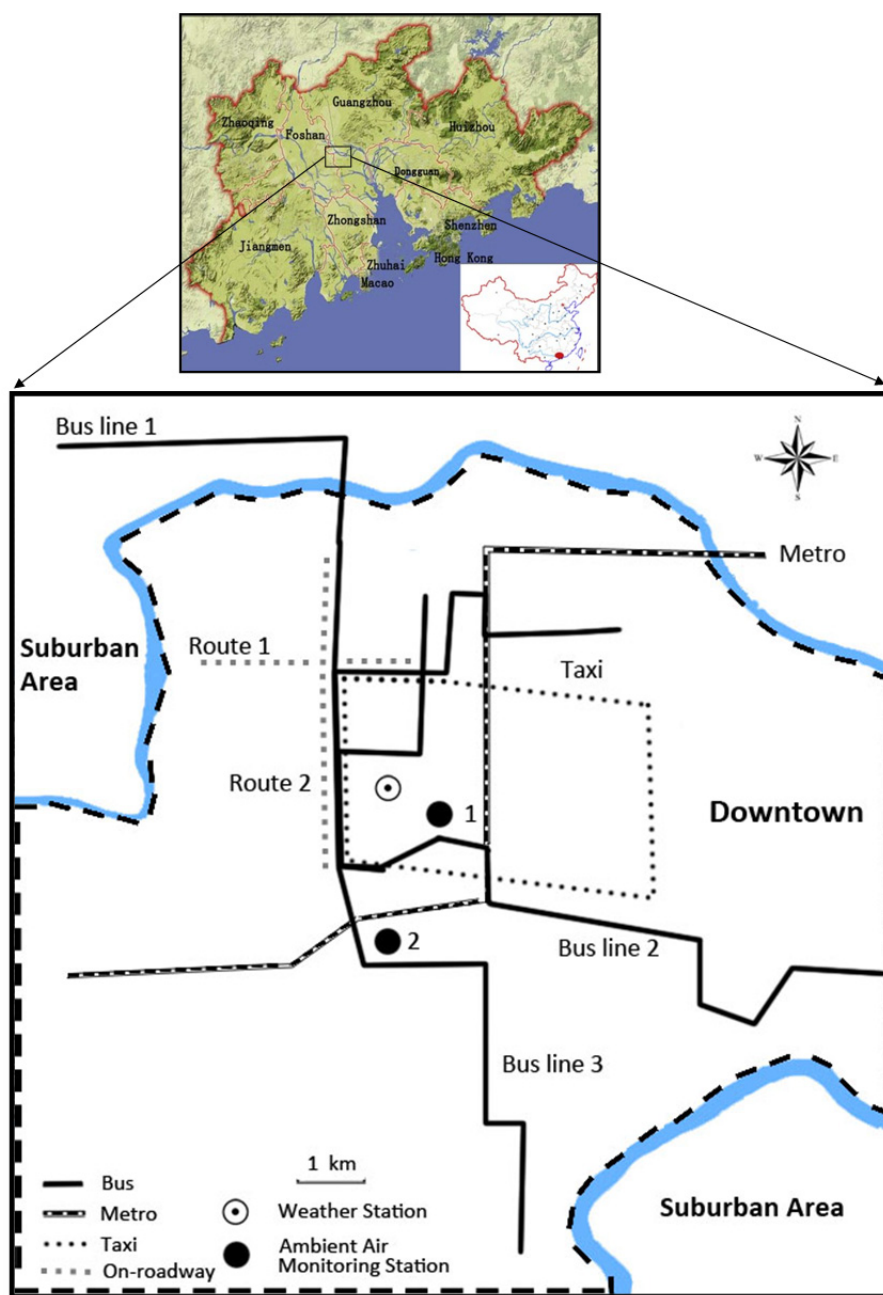


Fig. 1. Map showing the locations of Foshan city and study routes.

MINIVOL-TAS) were both placed at the same location and run for 24 hours simultaneously. A linear regression equation ($\text{Concentration}_{\text{MicroDust pro}} = 1.5 \times \text{Concentration}_{\text{MINIVOL-TAS}}$, $r = 0.92$, $p < 0.001$) can be derived from these 24-h average concentration data (14 pairs of samples). The slope (1.5) of this regression equation was used as an adjustment factor to correct for the proportional bias of MicroDust pro measurements.

Data Analysis

Statistical analysis (including independent t-test, Pearson correlation and linear regression) was performed using the software package SPSS (v18.0). Moreover, a General Linear Model (GLM) univariate procedure was used to determine

the impacts of influence factors on personal exposure in transport microenvironments. The GLM univariate procedure (analysis of covariance (ANCOVA)) incorporates both regression analysis and analysis of variance and allows the input of categorical and continuous variables. A log transformation was applied to the exposure levels to make data normality. The statistical assumptions underlying the ANCOVA (including homogeneity of variance, correlations among covariates, normality, linearity, and regression slopes) were checked carefully prior to performing the procedure. Detailed statistical background of the GLM could be found in literatures (Adams *et al.*, 2001; Kaur and Nieuwenhuijsen, 2009). In this study, personal exposure concentrations were selected as the dependent variables, while transport mode

and wind direction were regarded as the fixed factors. In the taxi mode analysis, A/C mode was selected as the fixed factor. Meteorological parameters were chosen as covariate variables. Note particularly that multiple inter-correlation variables would be identified, among which only the variable most correlated with exposure levels was selected. Detailed selection procedure could be found in Adams *et al.* (2001). For in-cabin mode, temperature, wind speed and direction were selected based on this selection procedure, while relative humidity, wind speed and direction were chosen in on-roadway mode.

RESULTS AND DISCUSSION

Inter-Comparison of Commuting Modes

Substantial differences of PM_{2.5} exposure levels existed among six commuting modes in this study (Table 1). During the whole sampling period, the PM_{2.5} levels among three on-roadway modes (walking, bicycle and motorcycle) were more or less similar. The high exposure levels of these on-roadway modes (with an average of 76.0 µg/m³) might be due to the direct impact of vehicle emission on road. On the other hand, the exposure levels of in-cabin modes were lower (with an average of 53.5 µg/m³) but varied a lot, which ranged from the lowest in metro of 27.9 µg/m³ to the highest in bus of 75.9 µg/m³. More specifically, the exposure level of bus in springtime (93.1 µg/m³) was profoundly higher than that in any other commuting mode. This phenomenon could be attributed to a host of reasons. Firstly, bus window was always opened in spring, leading to the significant ingress of particles. Secondly, bus door would be opened at each bus stop, which further facilitated the infiltration of PM_{2.5} from the outside environment into the bus. Thirdly, bus was required to queue up when approaching the bus stop, and had to wait for a few seconds for the passengers to get on and off, which would make it much closer to emission sources (i.e., exhaust pipes) (Huang *et al.*, 2012). However, it is worthwhile to note that exposure level of bus in summertime was notably lower, and this phenomenon was because bus usually closed windows and turned on A/C in this season, which helped to prevent the ingress of

particles. Regarding the lowest PM_{2.5} concentration levels in underground metro system, it was owing to the zero emission of electric trains, more fluid traffic (with correspondingly less congestion) on the surface (Querol *et al.*, 2012), and more efficient ventilation using (Furuya *et al.*, 2001; Nieuwenhuijsen *et al.*, 2007; Cheng *et al.*, 2012b). Overall, such differences emphasized that being away from vehicle emission on road can effectively minimize the exposure level of commuting mode.

In early years, it was widely reported that the ratios of PM exposure in on-roadway mode to that in in-cabin mode (O/I ratio) were lower than 1, because in-cabin modes was closer to emission sources (Gee and Raper, 1999; Adams *et al.*, 2001; Rank *et al.*, 2001). The lower O/I ratio was also due to less advanced automobile manufacturing, ventilation technology and filtration system (Xu and Zhu, 2009; Knibbs *et al.*, 2010). However, most of the ratios in this study were found to be higher than 1, which was similar to the results from studies after 2005 (Table 2). Although differences existed among these studies (e.g., different research period, vehicle types and location), this result highlighted the improvement of automobile manufacturing, ventilation technology and filtration efficiency in recent years, which helped to prevent ingress of particles (Briggs *et al.*, 2008). It was worthwhile to note that the O/I ratio of bus in spring (mostly with non-A/C) and taxi with non-A/C mode were both lower than 1 in this study, suggesting that A/C mode might play an important role in reducing the exposure level of in-cabin mode.

Influence of A/C Mode

Statistically significant difference ($p < 0.01$) between exposure levels of taxi with and without A/C mode was found in this study (Fig. 2). More specifically, taxi commuters can reduce their PM_{2.5} exposure via using A/C mode by 51.5% and 52.2% in spring and summer compared with the non-A/C mode, respectively. This was because closed windows could help to prevent ingress of particles. Besides, turning on the air conditioning system could further improve cabin ventilation rate and filtration efficiency (Briggs *et al.*, 2008; Knibbs *et al.*, 2011), which had vital impacts on

Table 1. Summary of meteorological parameters, PM_{2.5} concentrations of ambient air monitoring stations (AMS) and various commute modes.

		<i>n</i> ^a	Whole		Spring		Summer	
			Mean	S.D. ^b	Mean	S.D.	Mean	S.D.
Meteorological parameters	Temperature (°C)	240	24.6	7.1	20.3	4.6	32.5	2.6
	Relative humidity (%)	240	55.3	17.9	52.8	19.9	60.0	12.2
	Wind speed (m/s)	240	2.0	1.0	1.9	1.0	2.2	1.0
PM _{2.5} concentration (µg/m ³)	AMS	240	45.1	25.9	56.2	23.4	24.5	15.5
	Bus	101	75.9	56.6	93.1	54.3	22.1	14.0
	Taxi	53	56.8	37.9	69.1	38.0	28.2	15.6
	Metro	33	27.9	13.1	30.3	14.5	25.1	11.4
	Walking	54	74.1	50.0	71.7	34.4	79.7	76.2
	Bicycle	35	76.8	53.0	81.4	49.9	65.9	61.1
	Motorcycle	34	77.1	42.6	84.1	40.1	59.6	45.9

^a Number of samples.

^b Standard Deviation.

Table 2. Ratio of on-roadway to in-cabin mode (O/I) for PM exposure in previous studies.

Year	City	Season	PM size	Mode	Concentration ($\mu\text{g}/\text{m}^3$)	O/I ratio	A/C mode	Reference	
1998	Copenhagen, Denmark	June August	Total dust	bicycle/car	68/104	0.65	non-A/C	Rank <i>et al.</i> , 2001	
			Total dust	bicycle/car	21/47	0.45	non-A/C		
1999	London, UK	July	PM _{2.5}	bicycle/car	30.7/35	0.88		Adams <i>et al.</i> , 2001	
PM _{2.5}			bicycle/bus	30.7/34	0.90				
2000		February	PM _{2.5}	bicycle/bus	20.1/30.9	0.65			
			PM _{2.5}	bicycle/car	20.1/23.7	0.85			
2003	London, UK	April and May	PM _{2.5}	walking/bus	27.5/34.5	0.80		Kaur <i>et al.</i> , 2005	
			PM _{2.5}	walking/car	27.5/38	0.72			
			PM _{2.5}	walking/taxi	27.5/41.5	0.66			
			PM _{2.5}	bicycle/bus	33.5/34.5	0.97			
			PM _{2.5}	bicycle/car	33.5/38	0.88			
			PM _{2.5}	bicycle/taxi	33.5/41.5	0.81			
2005	London, UK	May and June	Coarse	walking/car	27.56/5.87	4.7	Moderate A/C	Briggs <i>et al.</i> , 2008	
			PM _{2.5}	walking/car	6.59/3.01	2.19	Moderate A/C		
			Very fine	walking/car	3.37/1.82	1.85	Moderate A/C		
2005	Taipei, China		PM ₁₀	motorcycle/car	112.8/41.9	2.69		Tsai <i>et al.</i> , 2008	
			PM ₁₀	motorcycle/bus	112.8/70	1.61			
			PM ₁₀	motorcycle/metro	112.8/64.9	1.74			
			PM _{2.5}	motorcycle/car	67.5/22.1	3.05			
			PM _{2.5}	motorcycle/bus	67.5/38.5	1.75			
			PM _{2.5}	motorcycle/metro	67.5/35	1.93			
			PM ₁	motorcycle/car	48.4/16.2	2.99			
			PM ₁	motorcycle/bus	48.4/31.3	1.55			
2010–2011	Beijing, China	December and February	PM _{2.5}	bicycle/taxi	49.10/31.64	1.55	A/C	Huang <i>et al.</i> , 2012	
				bicycle/bus	49.10/42.40	1.16	Mostly A/C		
2011	Foshan, China	June	PM _{2.5}	on-roadway mode/bus	68.4/22.1	3.10	Mostly A/C	This study	
				on-roadway mode/taxi	68.4/18.2	3.76	A/C		
				on-roadway mode/taxi	68.4/38.1	1.80	non-A/C		
				on-roadway mode/metro	68.4/25.1	2.73	A/C		
				on-roadway mode/bus	79.1/93.1	0.85	Mostly non-A/C		
				March and April	on-roadway mode/taxi	79.1/42.4	1.87		A/C
					on-roadway mode/taxi	79.1/87.4	0.91		non-A/C
PM _{2.5}	on-roadway mode/metro	79.1/30.3	2.61	A/C					

PM_{2.5} exposure level as mentioned above. The cumulative probability distributions of taxi PM_{2.5} exposure (Fig. 2) showed that turning points were observed at the ~90% (79 $\mu\text{g}/\text{m}^3$) and ~83% (27 $\mu\text{g}/\text{m}^3$) of PM_{2.5} concentrations in A/C mode for spring and summer, respectively. The variations of PM_{2.5} exposure levels above the turning points were notably larger (spanning from ~79 to ~150 $\mu\text{g}/\text{m}^3$ in spring and

from ~27 to ~47 $\mu\text{g}/\text{m}^3$ in summer). If we defined these concentrations (79 $\mu\text{g}/\text{m}^3$ in spring and 27 $\mu\text{g}/\text{m}^3$ in summer) as the thresholds of pollution episodes, we can find that in non-A/C mode, approximately 70% cases were pollution episodes in both spring and summer. This suggested that usage of A/C mode was an effective approach to reduce exposure levels, under which at least 83% cases were non-episode cases.

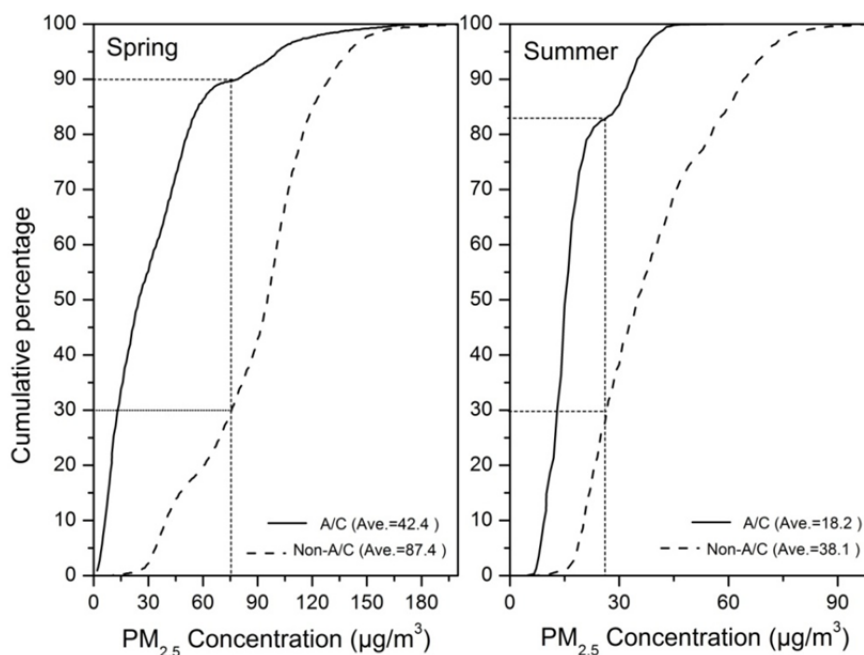


Fig. 2. The cumulative probability distributions of taxi exposure concentrations (one-minute averages) for A/C mode and non-A/C mode.

Relationship with $PM_{2.5}$ Concentration from AMS

As shown in Table 1, lower $PM_{2.5}$ concentration in summer can be found in AMS and six commute modes, highlighting the relationship between background pollution level and commuter exposure levels. In fact, measurements from AMS have been commonly used as surrogates for personal exposure levels to represent community exposure to pollutants such as $PM_{2.5}$ and CO in epidemiological and risk assessments. A large number of studies have revealed a good relationship between AMS and commuting exposure to $PM_{2.5}$ (Dennekamp *et al.*, 2002; Knibbs *et al.*, 2010; Wang and Oliver Gao, 2011), indicating that $PM_{2.5}$ concentration of urban background could be a good predictor of community exposure. In this section, their relationships would be simply quantified by linear regression method.

As expected, significant correlations between AMS concentration and exposure levels were found for most commute modes, suggesting the regression equations were able to predict the dependent variable (i.e., exposure level) by the independent variable (i.e., AMS $PM_{2.5}$ concentration) (Table 3). The small regression slopes of taxi (A/C) and metro suggested that usage of A/C can prevent the impacts from outside environment, and thus reduce in-cabin exposure level. On the other hand, the large regression intercepts in the regression equations for three on-roadway modes (ranging from 31.2 to 40.8 $\mu\text{g}/\text{m}^3$) implied that these three commuting modes were more influenced by their own microenvironment, which may be due to the direct exposure to traffic emission source and lack of mitigation measures (such as closing windows and turning on A/C in in-cabin mode). Although the metro system was assumed to be more independent, the correlation ($R^2 = 0.52$) between its exposure level and $PM_{2.5}$ concentration in urban background was found, which was probably because of the influences

of ventilation system, passenger movement, station escalator tunnels and corridors (Braniš, 2006; Cheng *et al.*, 2008; Cheng and Lin, 2010; Kam *et al.*, 2011).

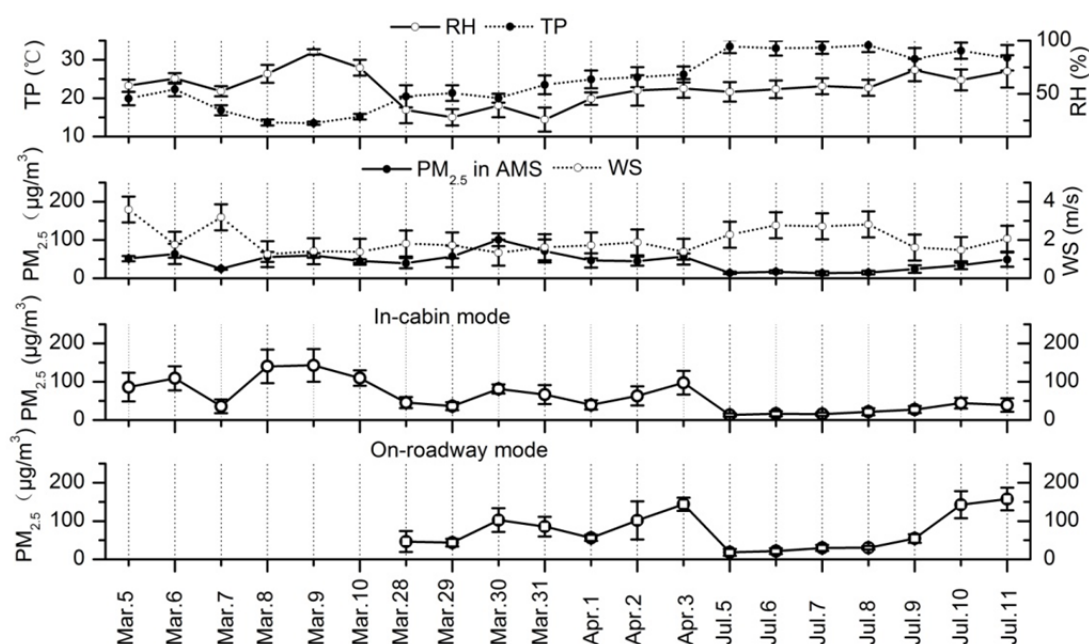
Overall, these results indicated that, although commuters moved around on the road surface, personal exposure was still affected by urban ambient pollutions besides traffic-related emission. Considering ambient $PM_{2.5}$ level was affected by meteorological condition, it is worthwhile to assess how meteorological parameters influence on exposure level.

Role of Meteorological Parameters

As mentioned previously, significant reductions of ambient $PM_{2.5}$ concentration and commuter exposure levels were observed in summer (Table 1). In this region, northerly continental monsoon and southerly maritime monsoon dominate in spring and summer respectively (not shown), which leads to significant differences in the meteorological parameters between these two seasons. Apart from the cleaner air mass from marine, the lower $PM_{2.5}$ level in summer was attributed to high temperature and wind speed in summer, which indicated a meteorological condition favorable for the dispersion and scavenging of airborne particulate matter. Detailed causes and influences of this seasonal pattern have been investigated by Wan *et al.* (2011). Previous studies have also found that there was a significant relationship between commuter exposure and wind speed (Kingham *et al.*, 1998; Alm *et al.*, 1999) and temperature (Zagury *et al.*, 2000; Kaur *et al.*, 2006). A detailed analysis on time-series (Fig. 3) showed that higher $PM_{2.5}$ exposure levels were always concurrent with lower wind speed and temperature. This further emphasized the role of meteorological parameters on both $PM_{2.5}$ concentrations from AMS and commuter exposure levels.

Table 3. Summary of regression models between PM_{2.5} exposure in different modes and PM_{2.5} concentration from the ambient air monitoring stations (AMS).

	AMS				
	Slope ($\mu\text{g}/\text{m}^3$ per $\mu\text{g}/\text{m}^3$)	Intercept ($\mu\text{g}/\text{m}^3$)	R ²	<i>p</i>	<i>n</i>
Bus	1.59	3.02	0.64	0.001	101
Taxi (non-A/C)	1.09	26.14	0.56	0.010	30
Taxi (A/C)	0.48	14.70	0.45	0.030	23
Metro	0.23	18.26	0.52	0.020	33
Walking	0.68	40.79	0.37	0.060	54
Bicycle	0.94	31.24	0.47	0.005	34
Motorcycle	0.91	34.22	0.53	0.001	35

**Fig. 3.** Time-series of daily average PM_{2.5} concentrations in ambient air monitoring stations (AMS), in-cabin mode and on-roadway mode, as well as wind speed (WS), relative humidity (RH) and temperature (TP) throughout the sampling period.

Pearson correlation coefficients between meteorological parameters and commuter exposure were calculated and shown in Table 4. Exposure levels of six commute modes (with the exception of taxi with non-A/C mode, $r = -0.14$, $p = 0.48$) were negatively correlated with wind speed ($p < 0.05$). In contrast, only exposure levels of bus and taxi were negatively correlated with temperature ($p < 0.05$). These results emphasized the role of high wind speed and temperature on reducing PM_{2.5} level by enhancing dispersive capability of the atmosphere (via mechanical and thermal turbulence respectively). Given that on-roadway modes were more influenced by very local traffic emission (as suggested in previous section), the absence of correlation between exposure levels of on-roadway modes and temperature however implied that thermal turbulence might be unable to reduce the concentration of street PM_{2.5} emitted by traffic sources. Relative humidity was found to be positive correlated with exposure levels of bus, taxi (non-A/C mode) and walking ($p < 0.05$), which can be also observed in the time series (Fig. 3). Similar results were also reported in other personal exposure (Adams *et al.*, 2001) and ambient air pollution

study (Barman *et al.*, 2008). The positive correlations were probably due to that high relative humidity would accelerate the formation of secondary species such as sulfate and nitrate from their precursors (SO₂ and NO_x) (Sun *et al.*, 2006).

It is also worthwhile to point out that wind direction is one of the most important variables to determine the air pollution level. Although limited studies were focused on the influence of wind directions on commuter exposure, distinct pattern of exposure levels in different wind direction sectors was found in this study (Fig. 4). Higher PM_{2.5} exposure levels in both in-cabin and on-roadway mode were found in northwesterly and southeasterly wind sectors. In this region, pollution episodes were always found when northwesterly wind was prevailing, because it was marked by weak regional flow with calm condition or with weak prevailing winds (Fig. 4) and directly affected by emission source in the northwest PRD (more specifically, agricultural activities in rural region). However, such cases were very rare (Fig. 4), and typically only occur when this region was influenced by tropical cyclones (Chan and Chan, 2000; Zhang *et al.*, 2010; Lin *et al.*, 2012). On the other hand, the

Table 4. Correlations between meteorological parameters and PM_{2.5} exposure level in traffic modes.

	Bus <i>n</i> = 101	Taxi (non-A/C) <i>n</i> = 30	Taxi (A/C) <i>n</i> = 23	Metro <i>n</i> = 33	Walking <i>n</i> = 54	Bicycle <i>n</i> = 34	Motorcycle <i>n</i> = 35
Temperature	-0.73**	-0.59**	-0.52*	-0.10	-0.07	-0.16	-0.29
Relative humidity	0.46**	0.54**	0.31	0.24	0.54**	0.35	0.35
Wind speed	-0.29**	-0.14	-0.45*	-0.38**	-0.32**	-0.49**	-0.39**

** . Correlation is significant at the 0.01 level (2-tailed).

* . Correlation is significant at the 0.05 level (2-tailed).

elevated PM_{2.5} concentrations observed in southeasterly wind sectors were likely due to large PM_{2.5} emission in its upwind region (i.e., Dongguan, Zhongshan and Shenzhen) (Fig. 4 in Zheng *et al.*, 2009).

Determination of Influence Factors on Commuter Exposure

In the GLM analysis, common logarithmic concentration of personal exposure was regarded as dependent variable, commuting modes and wind directions were regarded as fixed factor variables. Regarding the covariate variable, wind speed and temperature were selected for in-cabin mode, while relative humidity and wind speed were chosen for on-roadway mode. With an aim to quantify the impact of A/C mode, taxi mode was specifically selected as dependent variable to perform another GLM analysis, in which A/C mode was selected as the fixed factors. Because AMS concentration was highly affected by meteorological parameters, it was not included in this study to prevent any possible duplication. The R² values presented in Table 5 indicated the proportion of the total variability in the exposure levels that was accounted for the variation in the independent and covariate variables.

Temperature was the most important significant factor for in-cabin mode explaining 20.9% of the variation. Contributions of commuting mode and wind speed were also significant, which accounted 3.9% and 2.5% of the total variation, respectively. In contrast, wind speed and relative humidity contributed 6.8% and 7.3% of the variation for on-roadway mode. For taxi mode, A/C mode and temperature explained 14.1% and 11.0% of the variation, respectively, which once again brought out the importance of A/C mode on the exposure levels in taxi as pointed out earlier. Wind direction also contributed high variation for both in-cabin and on-roadway modes, although it failed to reach 0.05 significance level, which was probably attributed to the high degrees of freedom (Table 5). Note particularly that if only 8 dominant wind directions (with percentage approximately 73%) were selected, the contributions of wind direction for both in-cabin and on-roadway mode would be significant at 0.10 significance level (not shown).

Although the contribution of temperature to PM_{2.5} exposure level was scarcely quantified by previous studies, Kaur *et al.* (2006) and Kaur and Nieuwenhuijsen (2009) did find a large portion of temperature (22% and 12%, respectively) in variability of personal exposure of ultrafine particle counts. Contribution to the variation of commuter exposure from wind speed found here was much smaller than those in other studies. For instance, Adams *et al.* (2001) found that

wind speed explained approximately 18% of the variance in PM_{2.5} exposure in on-roadway mode. Zagury *et al.* (2000) reported that wind speed explained 39% of the variability of the black smoke concentrations inside the vehicles. Mode of transport was also a significant factor, explaining 6% of the variance in PM_{2.5} exposure, in Adams *et al.* (2001), which was more or less similar to this study. Although few studies focused on the contributions from relative humidity and wind direction, our results implied that these factors might be important determinants in exposure levels.

In summary, the difference of influence factors on in-cabin and on-roadway modes might be due to the different features of transportation modes. For instance, commuters were directly exposed to the atmosphere for on-roadway transportations, while in-cabin mode users can close windows and turn on A/C to prevent this direct exposure. In particular, commuting mode was a significantly determining factor for in-cabin mode, but not for on-roadway mode, indicating in-cabin mode users can reduce their PM_{2.5} exposure levels by selecting different modes. Although the meteorological parameters exert significant effects on the personal exposure levels for both in-cabin and on-roadway modes, commuters can do little to change these factors. In any case, they may refer to the meteorological data released by government to choose the appropriate travel time. City designers could also try to allow more airflow through the city for reducing pollution levels.

CONCLUSIONS

A series of field studies were carried out to measure commuter exposure to PM_{2.5} on six major commuting modes in an industrial city in the PRD, China. Significant differences of PM_{2.5} levels were found between in-cabin and on-roadway modes. Due to the isolation between in-cabin mode and vehicle emission on the road, exposure levels in in-cabin mode were notably lower. This result was different from those in earlier studies, highlighting the improvement of automobile manufacturing, ventilation technology and filtration efficiency in recent years. Actually, the PM_{2.5} exposure level for in-cabin mode was significantly lower in A/C mode, suggesting that commuters can reduce their exposure via choosing in-cabin mode with turning on the A/C and closing windows. Significant seasonal differences were found between spring and summer, which highlighted the impacts of meteorological parameters. The results from Pearson correlation and GLM analysis implied that the impacts of meteorological parameters on different commuter modes were different.

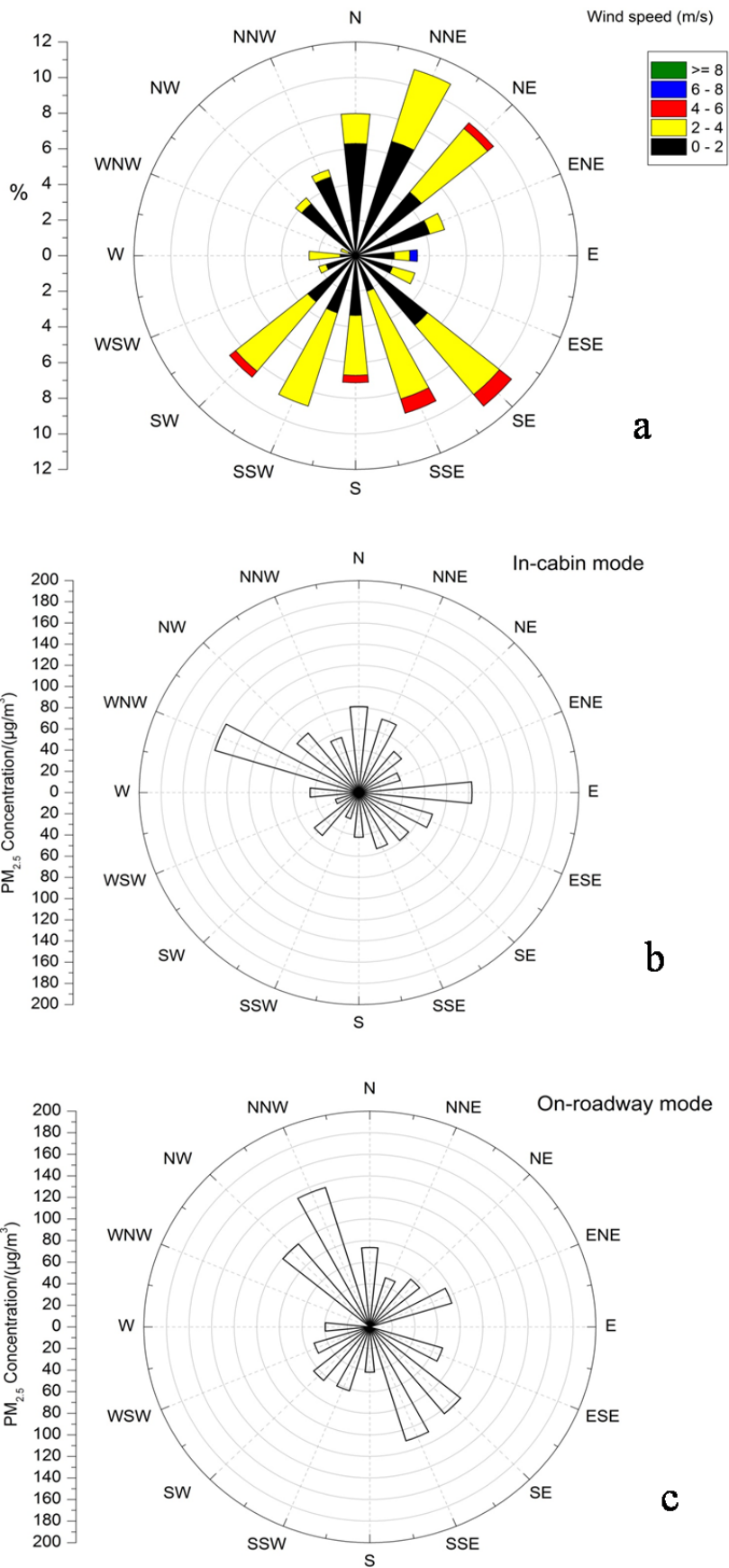


Fig. 4. (a) Wind roses, PM_{2.5} concentrations of (b) in-cabin mode and (c) on-roadway mode vs. wind direction sectors during the sampling period.

Table 5. Summary of the General Linear Model (GLM) results.

	<i>df</i> ^a	MS ^b	<i>F</i> value	<i>p</i>	R ²
<i>In-cabin mode, n = 187, R² = 0.54</i>					
Mode	2	0.48	7.95	0.001	0.039
Wind direction	15	0.09	1.50	0.112	0.056
Temperature	1	5.06	84.76	< 0.001	0.209
Wind speed	1	0.61	10.28	0.002	0.025
<i>On-roadway mode, n = 121, R² = 0.22</i>					
Mode	2	0.001	0.03	0.974	< 0.001
Wind direction	13	0.083	1.46	0.153	0.124
Relative humidity	1	0.64	11.13	0.001	0.073
Wind speed	1	0.59	10.39	0.002	0.068
<i>Taxi mode, n = 53, R² = 0.45</i>					
A/C mode	1	0.714	13.44	0.001	0.141
Wind direction	12	0.048	0.90	0.56	0.113
Temperature	1	0.558	10.50	0.003	0.110
Wind speed	1	0.085	1.60	0.216	0.017

^a *df*: Degrees of freedom.

^b MS: Mean squares.

ACKNOWLEDGEMENTS

This study was funded by a project from the Institute of Environmental Science, Nanhai District, Foshan, and a project from Jiangsu Key Laboratory of Atmospheric Environment Monitoring and Pollution Control of Nanjing University of Information Science & Technology, Jiangsu Province Innovation Platform for Superiority Subject of Environmental science and Engineering (KHK1204). The authors would like to thank Mr. Yu-Zheng Liang and Miss Di Liu and Shan Zhou for assistance in sampling. The efforts of two anonymous reviewers have greatly improved the quality of this manuscript and are sincerely appreciated.

REFERENCES

- Adams, H., Nieuwenhuijsen, M. and Colville, R. (2001). Determinants of Fine Particle (PM_{2.5}) Personal Exposure Levels in Transport Microenvironments, London, UK. *Atmos. Environ.* 35: 4557–4566.
- Afroz, R., Hassan, M.N. and Ibrahim, N.A. (2003). Review of Air Pollution and Health Impacts in Malaysia. *Environ. Res.* 92: 71–77.
- Alm, S., Jantunen, M.J. and Vartiainen, M. (1999). Urban Commuter Exposure to Particle Matter and Carbon Monoxide inside An Automobile. *J. Exposure Anal. Environ. Epidemiol.* 9: 237–244.
- Apte, J.S., Kirchstetter, T.W., Reich, A.H., Deshpande, S.J., Kaushik, G., Chel, A., Marshall, J.D. and Nazaroff, W.W. (2011). Concentrations of Fine, Ultrafine, and Black Carbon Particles in Auto-rickshaws in New Delhi, India. *Atmos. Environ.* 45: 4470–4480.
- Barman, S., Singh, R., Negi, M. and Bhargava, S. (2008). Fine Particles (PM_{2.5}) in Residential Areas of Lucknow City and Factors Influencing the Concentration. *CLEAN–Soil Air Water* 36: 111–117.
- Bevan, M.A.J., Proctor, C.J., Baker-Rogers, J. and Warren, N.D. (1991). Exposure to Carbon Monoxide, Respirable Suspended Particulates and Volatile Organic Compounds While Commuting by Bicycle. *Environ. Sci. Technol.* 25: 788–791.
- Boogaard, H., Borgman, F., Kamminga, J. and Hoek, G. (2009). Exposure to Ultrafine and Fine Particles and Noise During Cycling and Driving in 11 Dutch cities. *Atmos. Environ.* 43: 4234–4242.
- Braniš, M. (2006). The Contribution of Ambient Sources to Particulate Pollution in Spaces and Trains of the Prague Underground Transport System. *Atmos. Environ.* 40: 348–356.
- Briggs, D.J., de Hoogh, K., Morris, C. and Gulliver, J. (2008). Effects of Travel Mode on Exposures to Particulate Air Pollution. *Environ. Int.* 34: 12–22.
- Buonanno, G., Fuoco, F.C. and Stabile, L. (2011). Influential Parameters on Particle Exposure of Pedestrians in Urban Microenvironments. *Atmos. Environ.* 45: 1434–1443.
- Cao, J.J., Hang, H., Lee, S.C., Chow, J.C., Zou, C.W., Ho, K.F. and Watson, J.G. (2012). Indoor/Outdoor Relationships for Organic and Elemental Carbon in PM_{2.5} at Residential Homes in Guangzhou, China. *Aerosol Air Qual. Res.* 12: 902–910.
- CASELLA CEL (2005). MICRODUST *pro* Aerosol Monitoring System WINDUST *pro* Application Software Users Handbook, Bedford, United Kingdom, p. 22–24.
- Chan, A.T. and Chung, M.W. (2003). Indoor-outdoor Air Quality Relationships in Vehicle: Effect of Driving Environment and Ventilation Modes. *Atmos. Environ.* 37: 3795–3808.
- Chan, C.Y. and Chan, L.Y. (2000). Effect of Meteorology and Air Pollutant Transport on Ozone Episodes at A Subtropical Coastal Asian City, Hong Kong. *J. Geophys. Res.* 105: 20707–20724.
- Chan, L., Lau, W., Lee, S. and Chan, C. (2002). Commuter Exposure to Particulate Matter in Public Transportation modes in Hong Kong. *Atmos. Environ.* 36: 3363–3373.
- Cheng, Y.H., Lin, Y.L. and Liu, C.C. (2008). Levels of PM₁₀ and PM_{2.5} in Taipei Rapid Transit System. *Atmos.*

- Environ.* 42: 7242–7249.
- Cheng, Y.H. and Li, Y.S. (2010). Influences of Traffic Emissions and Meteorological Conditions on Ambient PM₁₀ and PM_{2.5} Levels at a Highway Toll Station. *Aerosol Air Qual. Res.* 10: 456–462.
- Cheng, Y.H., Chang, H.P. and Yan, J.W. (2012a). Temporal Variations in Airborne Particulate Matter Levels at an Indoor Bus Terminal and Exposure Implications for Terminal Workers. *Aerosol Air Qual. Res.* 12: 30–38.
- Cheng, Y.H., Liu, Z.S. and Ya, J.W. (2012b). Comparisons of PM₁₀, PM_{2.5}, Particle Number, and CO₂ Levels inside Metro Trains Traveling in Underground Tunnels and on Elevated Tracks. *Aerosol Air Qual. Res.* 12: 879–891.
- Colbeck, I., Nasir, Z.A., Ahmad, S. and Ali, Z. (2011). Exposure to PM₁₀, PM_{2.5}, PM₁ and Carbon Monoxide on Roads in Lahore, Pakistan. *Aerosol Air Qual. Res.* 11: 689–695.
- Dennekamp, M., Mehenni, O., Cherrie, J. and Seaton, A. (2002). Exposure to Ultrafine Particles and PM_{2.5} in Different Micro-environments. *Ann. Occup. Hyg.* 46: 412–414.
- Dominici, F., Peng, R.D., Bell, M.L., Pham, L., McDermott, A., Zeger, S.L. and Samet, J.M. (2006). Fine Particulate Air Pollution and Hospital Admission for Cardiovascular and Respiratory Diseases. *JAMA-J. Am. Med. Assoc.* 295: 1127–1134.
- Dons, E., Int Panis, L., Van Poppel, M., Theunis, J. and Wets, G. (2012). Personal Exposure to Black Carbon in Transport Microenvironments. *Atmos. Environ.* 55: 392–398.
- Economopoulou, A.A. and Economopoulos, A.P. (2002). Air Pollution in Athens Basin and Health Risk Assessment. *Environ. Monit. Assess.* 80: 277–299.
- Esber, L.A. and El-Fadel, M. (2008). In-vehicle CO Ingression: Validation Through Field Measurements and Mass Balance Simulations. *Sci. Total Environ.* 394: 75–89.
- Fondelli, M.C., Chellini, E., Yli-Tuomi, T., Cenni, I., Gasparrini, A., Nava, S., Garcia-Orellana, I., Lupi, A., Grechi, D., Mallone, S. and Jantunen, M. (2008). Fine Particle Concentrations in Buses and Taxis in Florence, Italy. *Atmos. Environ.* 42: 8185–8193.
- Furuya, K., Kudo, Y., Okinaga, K., Yamuki, M., Takahashi, S., Araki, Y. and Hisamatsu, Y. (2001). Seasonal Variation and Their Characterization of Suspended Particulate Matter in the Air of Subway Stations. *J. Trace Microprobe Tech.* 19: 469–485.
- Gee, I.L. and Raper, D.W. (1999). Commuter Exposure to Respirable Particles Inside Buses and by Bicycle. *Sci. Total Environ.* 235: 403–405.
- Geiss, O., Barrero-Moreno, J., Tirendi, S. and Kotzias, D. (2010). Exposure to Particulate Matter in Vehicle Cabins of Private Cars. *Aerosol Air Qual. Res.* 10: 581–588.
- Gómez-Perales, J., Colvile, R., Nieuwenhuijsen, M., Fernández-Bremauntz, A., Gutiérrez-Avedoy, V., Páramo-Figueroa, V., Blanco-Jiménez, S., Bueno-López, E., Mandujano, F. and Bernabé-Cabanillas, R. (2004). Commuters' Exposure to PM_{2.5}, CO, and Benzene in Public Transport in the Metropolitan Area of Mexico City. *Atmos. Environ.* 38: 1219–1229.
- Gómez-Perales, J., Colvile, R., Fernández-Bremauntz, A., Gutiérrez-Avedoy, V., Páramo-Figueroa, V., Blanco-Jiménez, S., Bueno-López, E., Mandujano, F. and Hidalgo-Navarro, M. (2007). Bus, Minibus, Metro Inter-comparison of Commuters' Exposure to Air Pollution in Mexico City. *Atmos. Environ.* 41: 890–901.
- Han, X. and Naeher, L.P. (2006). A Review of Traffic-related Air Pollution Exposure Assessment Studies in the Developing World. *Environ. Int.* 32: 106–120.
- Huang, J., Deng, F., Wu, S. and Guo, X. (2012). Comparisons of Personal Exposure to PM_{2.5} and CO by Different Commuting Modes in Beijing, China. *Sci. Total Environ.* 424: 52–59.
- Kam, W., Cheung, K., Daher, N. and Sioutas, C. (2011). Particulate Matter (PM) Concentrations in Underground and Ground-level Rail Systems of the Los Angeles Metro. *Atmos. Environ.* 45: 1506–1516.
- Kaur, S., Nieuwenhuijsen, M.J. and Colvile, R.N. (2005). Pedestrian Exposure to Air Pollution along a Major Road in Central London, UK. *Atmos. Environ.* 39: 7307–7320.
- Kaur, S., Clark, R., Walsh, P., Arnold, S., Colvile, R. and Nieuwenhuijsen, M. (2006). Exposure Visualisation of Ultrafine Particle Counts in a Transport Microenvironment. *Atmos. Environ.* 40: 386–398.
- Kaur, S. and Nieuwenhuijsen, M. (2009). Determinants of Personal Exposure to PM_{2.5}, Ultrafine Particle Counts, and CO in A Transport Microenvironment. *Environ. Sci. Technol.* 43: 4737–4743.
- Kim, K.H., Sekiguchi, K., Kudo, S. and Sakamoto, K. (2011). Characteristics of Atmospheric Elemental Carbon (Char and Soot) in Ultrafine and Fine Particles in a Roadside Environment, Japan. *Aerosol Air Qual. Res.* 11: 1–12.
- Kingham, S., Meaton, J., Sheard, A. and Lawrenson, O., (1998). Assessment of Exposure to Traffic-related Fumes During the Journey to Work. *Transp. Res. D Trans. Environ.* 3: 271–274.
- Knibbs, L.D., de Dear, R.J. and Morawska, L. (2010). Effect of Cabin Ventilation Rate on Ultrafine Particle Exposure Inside Automobiles. *Environ. Sci. Technol.* 44: 3546–3551.
- Knibbs, L.D., Cole-Hunter, T. and Morawska, L. (2011). A Review of Commuter Exposure to Ultrafine Particles and Its Health Effects. *Atmos. Environ.* 45: 2611–2622.
- Lin, M., Chan, I.N., Chan, C.Y., Engling, G., and Bloss, W. (2012). Implications of Regional Surface Ozone Increases on Visibility Degradation in Southeast China and Hong Kong. *Tellus B* 64: 19625, <http://dx.doi.org/10.3402/tellusb.v64i0.19625>.
- Mohammadyan, M., Ashmore, M. and Shabankhani, B. (2010). Indoor PM_{2.5} Concentrations in the Office, Café, and Home. *Int. J. Occup. Hyg.* 2: 57–62.
- Mugica-Álvarez, V., Figueroa-Lara, J., Romero-Romo, M., Sepúlveda-Sánchez, J. and López-Moreno, T. (2011). Concentrations and Properties of Airborne Particles in the Mexico City Subway System. *Atmos. Environ.* 49: 284–293.
- Murrini, L., Solanes, V., Debray, M., Kreiner, A., Davidson,

- J., Davidson, M., Vázquez, M. and Ozafrán, M. (2009). Concentrations and Elemental Composition of Particulate Matter in the Buenos Aires Underground System. *Atmos. Environ.* 43: 4577–4583.
- Nieuwenhuijsen, M., Gomez-Perales, J. and Colvile, R. (2007). Levels of Particulate Air Pollution, Its Elemental Composition, Determinants and Health Effects in Metro Systems. *Atmos. Environ.* 41: 7995–8006.
- Pope III, C.A., Burnett, R.T., Thun, M.J., Calle, E.E., Krewski, D., Ito, K. and Thurston, G.D. (2002). Lung Cancer, Cardiopulmonary Mortality, and Long-term Exposure to Fine Particulate Air Pollution. *JAMA-J. Am. Med. Assoc.* 287: 1132–1141.
- Pope III, C.A., Burnett, R.T., Thurston, G.D., Thun, M.J., Calle, E.E., Krewski, D. and Godleski, J.J. (2004). Cardiovascular Mortality and Long-term Exposure to Particulate Air Pollution Epidemiological Evidence of General Pathophysiological Pathways of Disease. *Circulation* 109: 71–77.
- Querol, X., Moreno, T., Karanasiou, A., Reche, C., Alastuey, A., Viana, M., Font, O., Gil, J., de Miguel, E. and Capdevila, M. (2012). Variability of Levels and Composition of PM₁₀ and PM_{2.5} in the Barcelona Metro System. *Atmos. Chem. Phys.* 12: 6655–6713.
- Rank, J., Folke, J. and Homann Jespersen, P. (2001). Differences in Cyclists and Car Drivers Exposure to Air Pollution From Traffic in the City of Copenhagen. *Sci. Total Environ.* 279: 131–136.
- Risom, L., Møller, P. and Loft, S. (2005). Oxidative Stress-induced DNA Damage by Particulate Air Pollution. *Mutat. Res.* 592: 119–137.
- Strak, M., Boogaard, H., Meliefste, K., Oldenwening, M., Zuurbier, M., Brunekreef, B. and Hoek, G. (2010). Respiratory Health Effects of Ultrafine and Fine Particle Exposure in Cyclists. *Occup. Environ. Med.* 67: 118–124.
- Sun, Y., Zhuang, G., Tang, A., Wang, Y. and An, Z. (2006). Chemical Characteristics of PM_{2.5} and PM₁₀ in Haze-fog Episodes in Beijing. *Environ. Sci. Technol.* 40: 3148–3155.
- Tsai, D.H., Wu, Y.H. and Chan, C.C. (2008). Comparisons of Commuter's Exposure to Particulate Matters While Using Different Transportation Modes. *Sci. Total Environ.* 405: 71–77.
- Wan, J.M., Lin, M., Chan, C.Y., Zhang, Z.S., Engling, G., Wang, X.M., Chan, I.N. and Li, S.Y. (2011). Change of Air Quality and Its Impact on Atmospheric Visibility in Central-western Pearl River Delta. *Environ. Monit. Assess.* 172: 339–351.
- Wang, G., Wang, H., Yu, Y., Gao, S., Feng, J. and Wang, L. (2003). Chemical Characterization of Water-soluble Components of PM₁₀ and PM_{2.5} Atmospheric Aerosols in Five Locations of Nanjing, China. *Atmos. Environ.* 37: 2893–2902.
- Wang, X. and Oliver Gao, H. (2011). Exposure to Fine Particle Mass and Number Concentrations in Urban Transportation Environments of New York City. *Transp. Res. D Trans. Environ.* 16: 384–391.
- Xu, B. and Zhu, Y. (2009). Quantitative Analysis of the Parameters Affecting In-cabin to On-roadway (I/O) Ultrafine Particle Concentration Ratios. *Aerosol Sci. Technol.* 43: 400–410.
- Zagury, E., Le Moullec, Y. and Momas, I. (2000). Exposure of Paris Taxi Drivers to Automobile Air Pollutants within Their Vehicles. *Occup. Environ. Med.* 57: 406–410.
- Zhang, Z., Engling, G., Lin, C.Y., Chou, C.C.K., Lung, S.C.C., Chang, S.Y., Fan, S., Chan, C.Y. and Zhang, Y.H. (2010). Chemical Speciation, Transport and Contribution of Biomass Burning Smoke to Ambient Aerosol in Guangzhou, A Mega City of China. *Atmos. Environ.* 44: 3187–3195.
- Zheng, J., Zhang, L., Che, W., Zheng, Z. and Yin, S. (2009). A Highly Resolved Temporal and Spatial Air Pollutant Emission Inventory for the Pearl River Delta region, China and Its Uncertainty Assessment. *Atmos. Environ.* 43: 5112–5122.

Received for review, August 14, 2012

Accepted, November 2, 2012