


RESEARCH ARTICLE

Open Access



Molecular investigation of isolates from a multistate polymicrobial outbreak associated with contaminated total parenteral nutrition in Brazil

Marcelo Pillonetto^{1,2*}, Lavinia Arend², Suzie M. T. Gomes³, Marluce A. A. Oliveira⁴, Loeci N. Timm⁵, Andreza F. Martins⁶, Afonso L. Barth⁶, Alana Mazzetti¹, Lena Hersemann^{7,8}, Theo H. M. Smits⁷ , Marcelo T. Mira^{1†} and Fabio Rezzonico^{7†}

Abstract

Background: Between November 2013 and June 2014, 56 cases of bacteremia (15 deaths) associated with the use of Total Parenteral Nutrition (TPN) and/or calcium gluconate (CG) were reported in four Brazilian states.

Methods: We analyzed 73 bacterial isolates from four states: 45 from blood, 25 from TPN and three from CG, originally identified as *Acinetobacter baumannii*, *Rhizobium radiobacter*, *Pantoea* sp. or *Enterobacteriaceae* using molecular methods.

Results: The first two bacterial species were confirmed while the third group of species could not be identified using standard identification protocols. These isolates were subsequently identified by Multi-Locus Sequence Analysis as *Phytobacter diazotrophicus*, a species related to strains from similar outbreaks in the United States in the 1970's. Within each species, TPN and blood isolates proved to be clonal, whereas the *R. radiobacter* isolates retrieved from CG were found to be unrelated.

Conclusion: This is the first report of a three-species outbreak caused by TPN contaminated with *A. baumannii*, *R. radiobacter* and *P. diazotrophicus*. The concomitant presence of clonal *A. baumannii* and *P. diazotrophicus* isolates in several TPN and blood samples, as well as the case of one patient, where all three different species were isolated simultaneously, suggest that the outbreak may be ascribed to a discrete contamination of TPN. In addition, this study highlights the clinical relevance of *P. diazotrophicus*, which has been involved in outbreaks in the past, but was often misidentified as *P. agglomerans*.

Keywords: *Acinetobacter baumannii*, *Rhizobium radiobacter*, *Phytobacter diazotrophicus*, *Pantoea*, TPN, Rep-PCR, Bacterial identification

Background

Total parenteral nutrition (TPN) is an important nutritional supplement for seriously ill patients, especially those incapable of oral or enteral nutrition. TPN are

nutritionally rich mixtures and probably the most complex pharmaceutical dosage forms compounded by pharmacists. These infusions, composed by 50 or more constituents, including electrolytes, amino acids, dextrose, lipids and calcium gluconate (CG) [1], are also a favorable growth media for microorganisms [2]. In addition, multiple transfer steps into the same container during preparation increase the risk for microbial contamination [3]. To avoid this, strictly sterile manipulation conditions and total compliance to good manufacturing practices and quality control rules are of paramount importance [1, 4].

* Correspondence: m.pillonetto@pucpr.br

†Marcelo T. Mira and Fabio Rezzonico contributed equally to this work.

¹Core for Advanced Molecular Investigation, Graduate Program in Health Sciences, School of Medicine, Pontifícia Universidade Católica do Paraná, Curitiba, PR, Brazil

²Central Public Health Laboratory – State of Paraná – LACEN/PR, Molecular Bacteriology Division, São José dos Pinhais, PR, Brazil

Full list of author information is available at the end of the article



Adoption of these procedures helped TPN-related outbreaks to decline, but adverse events still occur worldwide, usually resulting in severe sepsis with high fatality rate, especially in vulnerable individuals [5].

In nine outbreaks reviewed from 1990 to 2006, the mortality following TPN contamination was 48.9% (19/39) [5]. Incidence of bloodstream infection within patients receiving TPN has been reported between 1.3–39% [3]. Exposure to TPN is considered an independent risk factor for blood stream infections at neonate intensive care units [6]. The relative risk has been estimated as 4.69 in neonates receiving TPN through central catheter [7].

Several species of microorganisms have been involved in TPN-related outbreaks, including bacteria belonging to the *Erwinia herbicola*-*Enterobacter agglomerans* complex (EEC), as well as glucose non-fermenting Gram-negative bacteria, such as *Acinetobacter* spp. [8–11] and, less frequently, also *Rhizobium radiobacter* [12].

In November 2013, the municipal authorities of the City of Curitiba, capital of the state of Paraná, southern Brazil, reported a contamination of TPN bags. The batch was immediately recalled and a retrospective statewide survey was launched, resulting in the identification of 30 cases of TPN-related bacteremia (Additional file 1: Table S1). Case definition was: patient receiving Total Parenteral Nutrition at Hospitals receiving TPN bags from the suspected producers. The finding led the Brazilian Health Surveillance Agency (ANVISA) to trigger a nation-wide epidemiological, sanitary and microbiological investigation, leading to immediate withdrawal of the TPN solutions from the suspected manufacturers and closing of the involved TPN pharmaceutical industry for a three-month period. At the same time, 16 additional cases were detected in the southeastern state of Minas Gerais and were linked to a different pharmaceutical industry and one compound pharmacy based on that state, whereby the same precautions were taken by local health authorities. Additionally, an extensive epidemiological investigation was conducted, tracing the use of the raw material used to manufacture the compound solutions in Paraná and Minas Gerais production plants. The use of the same lot of calcium gluconate in mixtures from both Paraná and Minas Gerais was investigated. The sole calcium gluconate manufacturer industrial plant in Brazil was shut down and sterility tests were launched. In March 2014, one single case of bacteremia was detected in Mogi Mirim, a municipality located southeastern state of São Paulo. From February to June 2014, further nine cases of bacteremia involving use of TPN and/or CG produced in one additional in-house pharmacy (IP) were detected in the southern state of Rio Grande do Sul (Additional file 1: Table S1).

Initial investigation, as performed by manual or automated biochemical methods at the laboratories of the

hospitals where the cases were detected, resulted in the identification of mainly three species – “*P. agglomerans*”/“*Pantoea* sp.”, *A. baumannii*, and *R. radiobacter* (Additional file 1: Table S2). Alongside, there were sporadic reports of different *Enterobacteriaceae* species such as *Citrobacter amalonaticus*, *Citrobacter diversus*, *Kluyvera intermedia*, *Kluyvera* sp. and *Enterobacteriaceae* spp. Later, in June 2014, *R. radiobacter* was detected in three lots of CG by a private laboratory in Rio Grande do Sul.

Throughout this investigation, a subset of 73 bacterial isolates from blood, TPN and CG were directed to the reference Central Public Health Laboratory of Paraná – LACEN for molecular analysis. This subset was composed of all available isolates recovered during the outbreak and some TPN bags that were only partially administered to the patients. Here, we report the results of the microbiological and molecular investigation of this outbreak, with emphasis on the identification of the bacterial species involved and the tracking of the probable sources of contamination.

Methods

Epidemiological description of the outbreak

Demographic and epidemiological data of the cases were obtained from three different sources: epidemiological reports from municipal and state health authorities at Paraná, Minas Gerais and Rio Grande do Sul; official reports published by ANVISA; and the Laboratory Information System at LACEN.

Origin of isolates

Within this study, no clinical samples were handled directly, as we only obtained bacterial isolates from the involved hospitals. All isolates originated from the bloodstream of case patients, from TPN bags involved in the treatment of the patients, or from CG vials. These isolates were sent to LACEN in adequate transport containers, together with the microbiological reports produced at the hospitals where the cases were ascertained. From November 2013 through June 2014, a total of 45 isolates from 27 patients were evaluated. Another 25 isolates were recovered directly from TPN (four different manufacturers from four states), while the last three came from three different lots of CG from one single compounding industry (Table 1 and Additional file 1: Table S2).

A microbiological investigation of the pharmaceutical components sterility (such as CG, vitamins, electrolytes, amino acids, and dextrose) used to produce TPN in Paraná was conducted using USP Pharmacopeia Methods (1995). In addition, different equipment parts such as bags, connectors, elastomers and others were also submitted to standard microbiological sterility tests. No microorganisms were recovered from those tests [13].

Table 1 Geographic and microbiological data for isolates received during the TPN outbreak in Brazil

Source of isolates	Bacteria ^a		
	EEC (Brenner XII)	<i>R. radiobacter</i>	<i>A. baumannii</i>
Blood	19 (16 pts)	9 (9 pts)	17 (11 pts)
Total parenteral nutrition	6	14	5
Calcium gluconate vials	0	3	0
Total	25	26	22
Original lab identification	<i>Pantoea</i> spp. (9)	<i>R. radiobacter</i> (18)	<i>A. baumannii</i> (16)
	<i>P. agglomerans</i> (8)	GNFGNB (7)	UNI (6)
	<i>C. diversus</i> (4)	UNI (1)	
	<i>C. amalonaticus</i> (1)		
	<i>K. intermedia</i> (1)		
	<i>Kluyvera</i> spp. (1)		
	Enterobacteriaceae (1)		
Geographical origin			
Paraná			
Blood	14	5	17
TPN	4	–	5
Minas Gerais			
Blood	5	–	–
TPN	2	–	–
São Paulo			
Blood	–	1	–
TPN	–	–	–
Rio Grande do Sul			
Blood	–	3	–
TPN	–	14	–
CG	–	3	–
Hospitals Involved (cities)			
Paraná	5 (3)	4 (2)	4 (2)
Minas Gerais	5 (2)	–	–
São Paulo	–	1 (1)	–
Rio Grande do Sul	–	3 (1)	–

^aAbbreviations: Pts Patients, TPN total parenteral nutrition, CG calcium gluconate, GNFGNB glucose non-fermenting Gram-negative bacteria, UNI unidentified

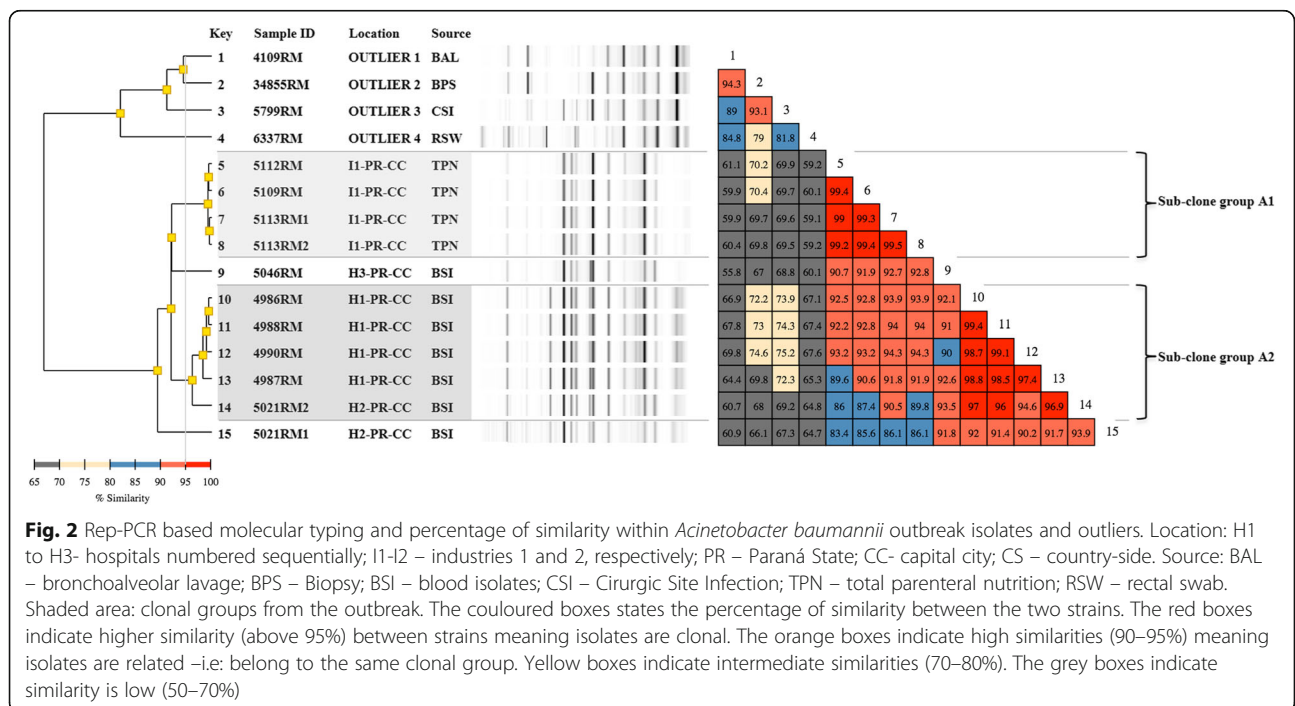
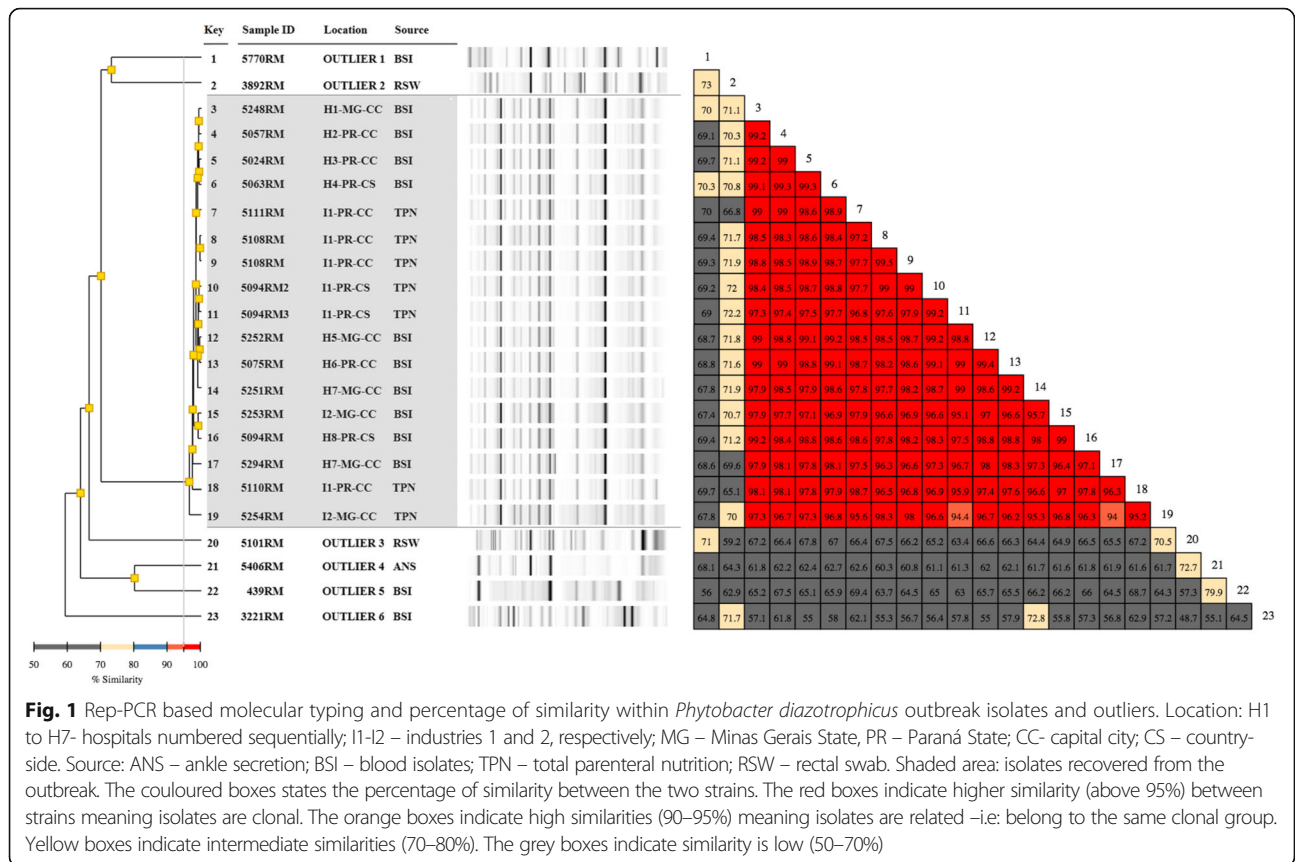
Microbiological identification

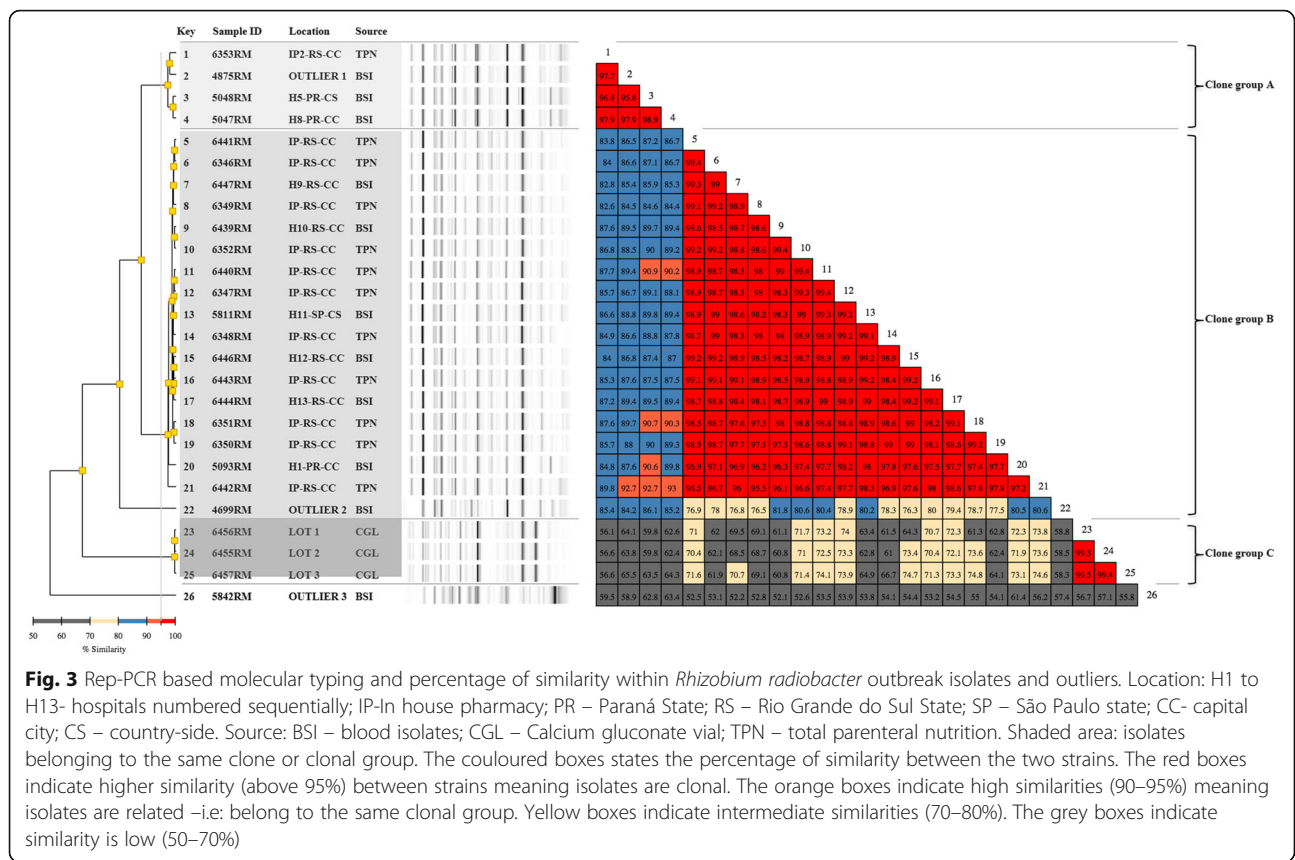
Strains obtained in this study were routinely grown on MacConkey agar and stored at – 80 °C as glycerol stocks. Identification of all 73 isolates was performed at LACEN with the Vitek-2° platform (Merck L'Étoile, FR) using GN and AST-N 239 cards for species identification and antimicrobial susceptibility testing, respectively. Partial sequences (around 500 bp) of the 16S rRNA gene were obtained using the MicroSEQ 500° 16S rDNA PCR Kit (Thermo Fisher Scientific – Waltham, MA-USA) and analyzed using Le BIBI <https://umr5558-biserv.univ-lyon1.fr/lebibi/lebibi.cgi> [14]

and Sepsis-Test° Blast <http://www.sepsitest-blast.de/en/index.html> identification tools.

Molecular typing

Molecular epidemiology analysis was performed using an automated rep-PCR system (Diversilab°, BioMérieux) as previously described [15]. Seventeen *Enterobacteriaceae* (ten from blood and seven from TPN, Fig. 1), eleven *Acinetobacter* (seven from blood and four from TPN, Fig. 2) and twenty-three *Rhizobium* (eight from blood, twelve from TPN and three from CG, Fig. 3)





chosen to represent the widest diversity in isolation source and sample type were submitted to clonal analysis. Isolates sent to LACEN before or after the outbreak period (November 2013–June 2014), but from the same hospitals, if available, were included as outliers for rep-PCR profile comparison, including six “*Pantoea* spp.,” four *A. baumannii* and three *R. radiobacter* (Figs. 1, 2 and 3).

Rep-PCR results were analyzed using the Pearson correlation statistical method (Diversilab software). Isolates showing a similarity of 90% or higher were considered as related, whereas if the similarity exceeded 95%, they were assigned to the same clonal group according to Higgins et al. [16].

Whole-genome sequencing of two Enterobacteriaceae isolates

A random isolate from TPN (5110RM) [17] and a random isolate from a blood sample (5020RM), both identified by Vitek-2[®] as “*Pantoea* sp.,” were selected for more detailed molecular analysis of all the outbreak isolates primarily assigned to some species within the *Enterobacteriaceae*. Whole-genome sequencing (WGS) of both isolates was performed on the Illumina MiSeq platform (Illumina Inc., San Diego, USA) and draft genomes were assembled de novo using the SeqMan NGen software

included in the DNASTAR Lasergene genomics package version 12 (DNASTAR, Madison, USA) as described elsewhere [17]. Sequences of housekeeping genes *atpD*, *gyrB*, *infB* and *rpoB* were extracted from WGS data and used to perform MultiLocus Sequence Analysis (MLSA) according to the method described by Brady et al. [18]. A phylogenetic tree was constructed using the concatenated DNA sequences implementing the Neighbor-Joining method in the software MEGA 7 [19]. Average nucleotide identities (ANI) were determined from the subroutine in EDGAR 2.1 [20] after annotation of the genomes in GenDB [21].

Results

Epidemiological investigation

We received 45 blood isolates from 15 hospitals of seven different cities in four different states. Additionally, 25 isolates obtained from TPN administered to the patients and three isolates from CG were included in this study (Additional file 1: Table S2). Overall mortality rate was 26.8% (15/56) (Table 1 and Additional file 1: Table S1). The age distribution of the patients was as follows: 22 were below 1 year of age (medium age: 51.3 days; range: 12 to 240 days), while the remaining were older (range: 4 to 74 years) at the time blood samples were collected.

Bacterial identification

Verification of the identity of the 73 isolates at LACEN demonstrated that three different bacterial species were present in the analyzed samples: 22 and 26 isolates were unanimously identified as *A. baumannii* complex (ABC) and *R. radiobacter*, respectively, both using the Vitek-2® platform as well as by 16S rRNA gene analyses, thus largely confirming the primary identification performed by the hospital laboratories of origin (Additional file 1: Table S2, accession numbers for archetypal 16S rRNA sequences: *A. baumannii* isolate 4988RM - MF403059; *R. radiobacter* isolate 5037RM - MF403063). The other 25 isolates could tentatively be assigned to the *Enterobacteriaceae* family, but were allocated to different species depending on the identification method used (see below).

The additional sterility test of pharmaceutical components in TPN production did not yield any isolates, indicating that no discrete component or equipment hardware was contaminated.

Isolates belonging to the Enterobacteriaceae

A total of 25 *Enterobacteriaceae* isolates were referred to LACEN: 19 isolates from blood and six isolates from TPN. The blood isolates originated from 16 different patients, one of which presenting four *Enterobacteriaceae* isolates obtained on two different days. Fourteen out of the 19 *Enterobacteriaceae* blood isolates were from five hospitals in three different cities of Paraná; the remaining five isolates were from five hospitals at two

different cities of Minas Gerais. Six *Enterobacteriaceae* isolates were isolated from six different lots of TPN. Four of six *Enterobacteriaceae* from TPN were from Curitiba (Paraná) and two others from Belo Horizonte (Minas Gerais).

All *Enterobacteriaceae* isolates were identified at LACEN as “*Pantoea* sp.” using the Vitek-2 platform. On the other hand, partial 16S rRNA gene sequence analysis at the Le BIBI website identified all isolates either as ‘*Grimontella senegalensis*’ or as *Phytobacter diazotrophicus*. Moreover, when the SEPSI-Test Blast website was used to check the identity of partial 16S rRNA genes, all sequences indicated *Citrobacter amalonaticus* (Additional file 1: Table S2). Manual comparison of the full 16S rRNA gene sequence of isolate 5110RM (a representative isolate from the only clonal group of *P. diazotrophicus*, obtained from TPN) against the 16S rRNA gene of the type strain *P. diazotrophicus* DSM 17806^T resulted in a high sequence identity (99,4%), using BLAST2N (https://blast.ncbi.nlm.nih.gov/Blast.cgi?PAGE_TYPE=BlastSearch&BLAST_SPEC=blast2-seq&LINK_LOC=align2seq) [17]. This result was then checked by MLSA analysis using concatenated sequences of housekeeping genes *atpD*, *gyrB*, *infB* and *rpoB* extracted from WGS data of both strains, which confirmed the identification of the isolate as *P. diazotrophicus* [17] (Fig. 4, Additional file 1: Table S3).

Rep-PCR results for the 17 *Enterobacteriaceae* isolates analyzed showed 95% or higher similarity among them, thus confirming their clonality (Fig. 1).

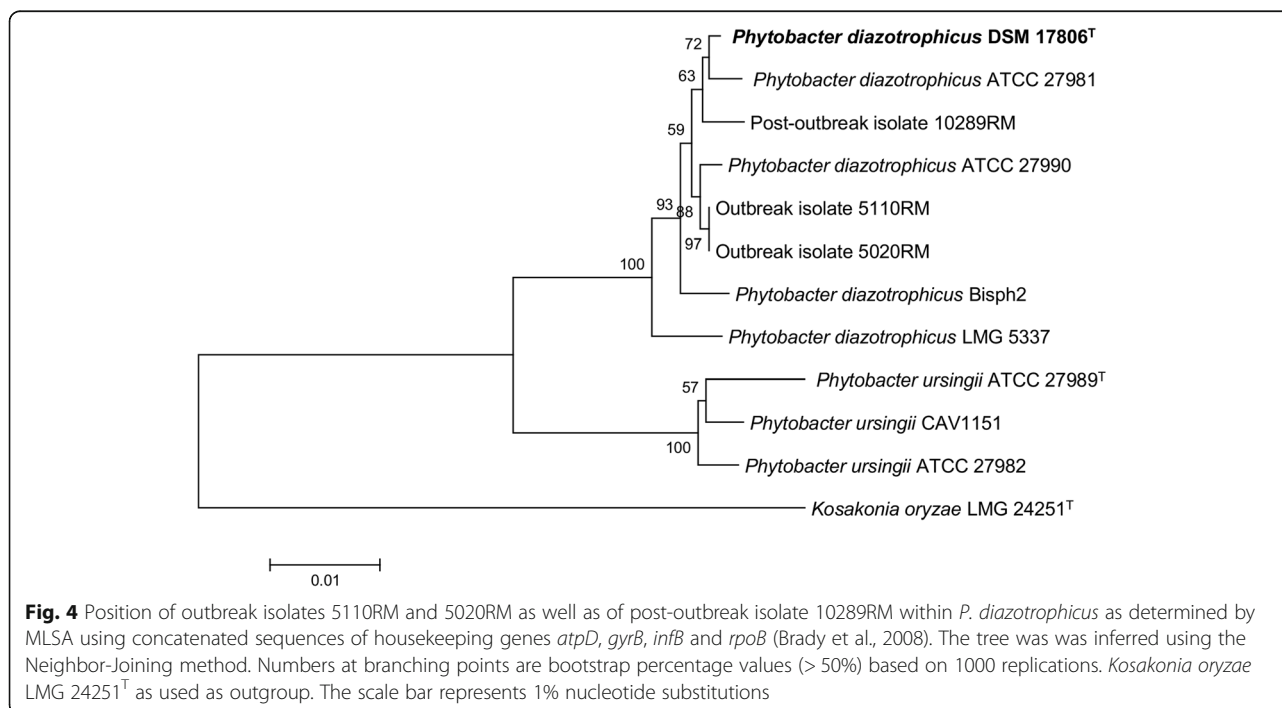


Fig. 4 Position of outbreak isolates 5110RM and 5020RM as well as of post-outbreak isolate 10289RM within *P. diazotrophicus* as determined by MLSA using concatenated sequences of housekeeping genes *atpD*, *gyrB*, *infB* and *rpoB* (Brady et al., 2008). The tree was inferred using the Neighbor-Joining method. Numbers at branching points are bootstrap percentage values (> 50%) based on 1000 replications. *Kosakonia oryzae* LMG 24251^T as used as outgroup. The scale bar represents 1% nucleotide substitutions

Since isolate 5110RM, which was previously assigned to *P. diazotrophicus* [17], is also included in this clone group, we safely can assume that all other *Enterobacteriaceae* isolates also belong to this species. Sequencing of the genome of a second clinical isolate (5020RM, obtained from blood) allowed the comparison of its MLSA genes. These were identical to those of 5110RM and displayed 99.53% similarity to type strain *P. diazotrophicus* DSM 17806^T [17] (Fig. 4). The genome sequence showed that the two outbreak isolates had average nucleotide identities of 99.99%, thus further supporting clonality.

Considering the isolates chosen as outliers and as well identified by Vitek-2 as '*Pantoea* sp.', two of them (5770RM and 3892RM) showed around 70% similarity to the clonal outbreak isolates, while the remaining four clustered more distantly (Fig. 1). Ensuing sequence analysis of the MLSA gene set allowed their a more precise assignment of the outliers to a species, whereby only three out of six were effectively found to belong to the genus *Pantoea* and none was identified as *P. diazotrophicus* (Additional file 1: Table S4).

The *A. baumannii* isolates

Twenty-two isolates of *A. baumannii* complex (ABC) were referred to LACEN, of which 17 originated from ten different patients: eight with single isolates and two with multiple isolates (four and five positive blood cultures, respectively). Five ABC isolates were originated from five different lots of TPN. All *A. baumannii* isolates were from Paraná state, and identification was confirmed both by Vitek-2 and partial 16S rRNA gene sequencing (Additional file 1: Table S2).

Four TPN isolates belonged to the same sub-clonal group (A1) with similarity above 99%; one blood isolate (5046RM) showed an average similarity of 92.0% to sub-clone group A1 (TPN) and 91.5% to sub-clone group A2 (blood isolates). Within all the latter blood isolates, similarity ranged from 94.6 to 99.4% based on rep-PCR determinations. Comparison of individual isolates between clone group A1 and A2 resulted in a similarity ranging from 86.0% (5112RM vs. 5021RM2) up to 94.3% (5113RM vs. 4990RM) (Fig. 2).

While isolates 5113RM1 and 5113RM2 obtained from the same TPN bag proved to be clonal (99.5% similarity), isolates 5021RM1 and 5021RM2 originating from the same patient failed to reach, albeit by a narrow margin (93.9%), the similarity threshold needed to be included within the same clonal group.

The *R. radiobacter* isolates

Twenty-six isolates of *R. radiobacter* were referred to LACEN, nine of them originated from blood samples of nine different patients and 14 from different bags of

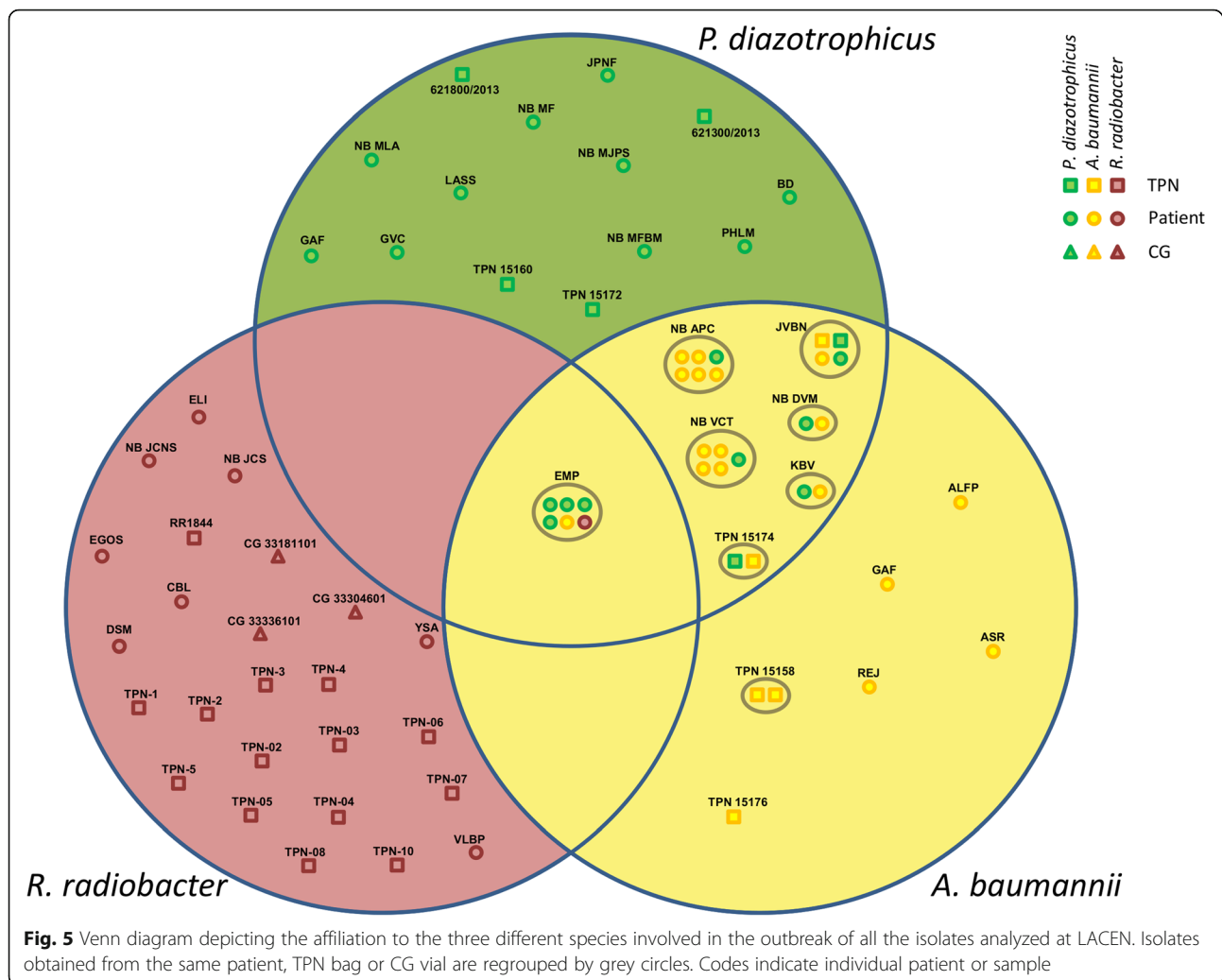
TPN. No patient presented multiple isolates. Five out of nine isolates from blood samples were from four hospitals at two different cities in Paraná; three isolates were from three hospitals at Porto Alegre (Rio Grande do Sul) and one isolate was from Mogi Mirim (São Paulo State). Additionally, three isolates were obtained from CG vials. All isolates from TPN bags and CG vials were from Porto Alegre. Identification of all *R. radiobacter* isolates was confirmed both by Vitek-2 and partial 16S rRNA gene sequencing (Additional file 1: Table S2). Molecular typing of *R. radiobacter* strains revealed three different groups with internal similarity above 95%: clonal group A, composed of three outbreak isolates and one outlier; clonal group B with 17 outbreak isolates, and group C, with the three CG isolates. Clonal groups A and B equally contained isolates from blood and TPN and inter-group pairwise comparison of their individual isolates showed a similarity ranging from 82.6% (6353RM vs. 6349RM) to 93.0% (5047RM vs. 6442RM). It is worth to note the different clonality associated to the TPN bags from the two in-house pharmacies (IP) scrutinized, with the sole isolate analyzed from IP2 (6353RM) clustering with clonal group A, whereas all those originating from IP1 could be assigned to clonal group B. Clonal group C, composed solely of CG isolates, was even more distantly related, with a similarity to the other two groups that never exceeded 75%. Two outliers showed up as singlets (Fig. 3).

Connections between the different organisms isolated

A. baumannii and *P. diazotrophicus* were often found in mutual association both in TPN bags as well as in blood samples. Although not all *A. baumannii* isolates were tested by rep-PCR, both clonal sub-groups and one isolate (5021RM1) loosely associated to sub-group A2 could be found among those concomitant with *P. diazotrophicus*. In one case, the two species could be retrieved straight from the TPN bag administered to an infected patient (JVBN), thus reliably confirming the source of infection (Fig. 5). Blood samples from one patient in Paraná (EMP) showed an infection with all three bacteria (*A. baumannii*, *P. diazotrophicus* and *R. radiobacter*) simultaneously, thus hinting to the possibility of a single tri-bacterial outbreak. However, in no other sample were *R. radiobacter* isolates found in direct association with *A. baumannii* or *P. diazotrophicus*. *R. radiobacter* isolates of the same clonal groups found in patients in Paraná and São Paulo State were retrieved in TPN bags and blood samples from Rio Grande do Sul suggesting a connection between these events, despite the geographical distance.

Discussion

The molecular investigation of the outbreak led to the identification of isolates belonging to three different



bacterial species: *P. diazotrophicus*, *A. baumannii* and *R. radiobacter*. Molecular typing of the isolates from blood and TPN using rep-PCR revealed clonality for *P. diazotrophicus* and, to lesser extent, for *A. baumannii*. The fact that both subclonal groups of the latter species were found in association with a clonal infection by *P. diazotrophicus* hints at a single source of contamination for TPN bags (Fig. 5). Furthermore, considering that in *A. baumannii* the similarity between outbreaks isolates rarely fell considerably below 90% and was dependent on their origin (TPN or blood), the possibility that the observed differences may be due to in-run variations in the rep-PCR [22], rather than to the actual existence of different clones, cannot be discounted (Fig. 2).

On the other hand, three clonal groups could clearly be distinguished within *R. radiobacter*, with calcium gluconate isolates obviously unrelated to those originating from TPN bags and blood. This does not exclude the calcium gluconate as the possible source of contamination, but does not allow drawing any other direct conclusions. One

isolate included as outlier in the study, 4875RM, noticeably clustered within clone group A (Fig. 3). Considering that 4875RM was retrieved from a hospital in Paraná in October 2013 (Additional file 1: Table S2), i.e. less than a month before the first confirmed outbreak isolates, it is possible that its existence may be indication of an earlier onset of the outbreak than originally thought.

No definitive source of contamination could be assessed beyond any doubt. The in-depth investigation by the Brazilian Health Surveillance Agency (ANVISA) targeting the various TPN components and their relative lot numbers was not conclusive. Since at least two of the three species are rather uncommon in clinical settings (*R. radiobacter* and *P. diazotrophicus*), it is possible that a concurrent, single-source contamination of TPN mixture may have occurred. This hypothesis is supported by the finding that in at least one patient, all three different species were isolated simultaneously, as well as by blood and/or TPN samples of five patients presenting both *A. baumannii* and *P. diazotrophicus* isolates (Fig. 5).

R. radiobacter and *P. diazotrophicus* are well known to be plant-associated, water-associated or soil-borne organisms [23, 24]. However, the reported data does not allow a definite conclusion, as calcium gluconate, one of the suspected potential sources investigated, was contaminated by a *R. radiobacter* belonging to a different clone group as the ones found in TPN or isolated from patients (Fig. 3 and Additional file 1: Table S2).

The major problem hindering a definitive identification of the origin of the outbreak is that, probably due to inter-laboratory variations in microbiological sampling procedures, not all species were regularly recovered from all cultured samples, with some laboratories only reporting the prevailing colony type. This could explain why in Paraná all three species could be identified, while in other states only *P. diazotrophicus* or *R. radiobacter* were isolated.

As no single origin could be identified, we cannot completely exclude the possibility that multiple sources were present, indicating a larger systematic problem with TPN. In any case, recurring outbreaks in Brazil and elsewhere in the world indicate that high standards of quality management for TPN solutions are essential. To avoid the recurrence of similar events, these would ideally include more rigid post-production controls for early detection of bacterial contaminations, including the three species identified in this study. Our study also showed that in this case sterility of the different components or equipment hardware used for TPN production was not breached, rather pointing towards the different TPN components as a source of contamination.

The identification issues within the EEC in clinical laboratories were once again exposed by this work. Indeed, at the original hospital laboratories all EEC isolates were incorrectly identified as "*Pantoea* sp." by Vitek-2°, whereas analysis of partial 16S rRNA gene sequences using routine protocols yielded incoherent results. Only an in-depth molecular investigation implementing MLSA allowed precise identification of the involved *Enterobacteriaceae* species as *P. diazotrophicus*, an endophytic bacterium originally isolated from wild rice [17, 25] that was repeatedly involved in nosocomial outbreaks linked to the use of TPN or injectable solutions in the last five decades [26–34]. This confirms the need to adapt current clinical diagnostics protocol for an improved identification of bacteria belonging to the EEC, which is a recurring issue, especially when biochemical panels or automated systems are employed for species identification [35, 36].

Conclusions

This study highlights the clinical relevance of *P. diazotrophicus*, a species that has been only recently described, but that was frequently misidentified as *Pantoea*

sp. in the past. The complexity of this outbreak investigation, with the concomitant recurrence of three uncommon bacterial species, underpins the importance of standardized protocols for the isolation of all colony types, in order to preserve a maximum of information that is essential to reconstruct the history and origin of an epidemic. Finally, it reinforces the importance of an in-depth molecular characterization before attributing and publishing names of rare and/or atypical species involved in outbreaks in order to avoid misidentifications.

Additional file

Additional file 1: Table S1. Outbreak clinical epidemiological data, including state of origin, numbers of bacteremias, mortality rate and hospitals involved. **Table S2.** Supplemental epidemiological and laboratory data, including geographical origin, sample type, original and molecular id. of all the outbreak strains sent to the LACEN reference laboratory. For each species, outliers are listed at the bottom of the page and are highlighted by the gray shading. **Table S3.** Accession numbers assigned to the sequences of the housekeeping genes used for MLSA of the strains belonging to the genus *Phytobacter*. *Kosakonia oryzae* LMG 24251^T was included as outgroup. **Table S4.** Accession numbers assigned to the sequences of the housekeeping genes used for the identification of the *Enterobacteriaceae* outliers included in this work. (DOCX 73 kb)

Abbreviations

ABC: *A. baumannii* complex; ANI: Average nucleotide identity; ANVISA: Brazilian Health Surveillance Agency; CG: Calcium gluconate; EEC: *Erwinia herbicola*-*Enterobacter agglomerans* complex; IP: In-house pharmacy; LACEN: Central Public Health Laboratory of Paraná; MLSA: MultiLocus Sequence Analysis; TPN: Total parenteral nutrition; WGS: Whole-genome sequencing

Acknowledgements

We are thankful to Helena R. S. D'Espindula and Monica Dalmann at PUCPR and Karin O. Kalluf at LACEN for technical assistance.

Funding

This study was supported by the Central Public Health Laboratory of Paraná (LACEN/PR), the Core for Advanced Molecular Investigation at PUCPR, the FLASH Research Programme Project SAMBA funded by the Swiss State Secretariat for Education, Research and Innovation (SERI), and the Life Science and Facility Management Department at Zurich University for Applied Sciences (ZHAW). None of the funding agencies were involved in design of the study, in the collection, analysis and interpretation of data, nor in the writing of the manuscript.

Availability of data and materials

GenBank accession numbers of MLSA data determined in this study are included in this published article in Additional File 1: Table S3 and Table S4. The genome sequences analyzed during the current study are available from the corresponding author on reasonable request.

Authors' contributions

MP, THMS, MTM and FR designed the study. MP, LA, MAAO, LNT, AFM, ALB and AM performed bacterial isolation and phenotypic identification experiments. MP, LA, AFM, ALB, LH, THMS and FR performed molecular and genomic experiments. MAAO, LNT and SMTG provided epidemiological data. MP, THMS and FR analyzed data. MP, THMS, MTM and FR wrote the manuscript. All authors read and approved the final version of the manuscript.

Ethics approval and consent to participate

As in this study, we only handled bacterial isolates obtained from the involved hospitals, an ethical approval for work with clinical samples was not required.

Consent for publication

Not applicable.

Competing interests

The authors declare that they have no competing interests.

Publisher's Note

Springer Nature remains neutral with regard to jurisdictional claims in published maps and institutional affiliations.

Author details

¹Core for Advanced Molecular Investigation, Graduate Program in Health Sciences, School of Medicine, Pontifícia Universidade Católica do Paraná, Curitiba, PR, Brazil. ²Central Public Health Laboratory – State of Paraná – LACEN/PR, Molecular Bacteriology Division, São José dos Pinhais, PR, Brazil. ³Brazilian Health Surveillance Agency – ANVISA, Brasília, DF, Brazil. ⁴Ezequiel Dias Foundation, Central Public Health Laboratory – State of Minas Gerais, Bacteriology Division, Belo Horizonte, MG, Brazil. ⁵Central Public Health Laboratory – State of Rio Grande do Sul, Bacteriology Division, Porto Alegre, RS, Brazil. ⁶Research Laboratory on Bacterial Resistance (LABRESIS), Federal University of Rio Grande do Sul, Hospital de Clínicas, Porto Alegre, RS, Brazil. ⁷Environmental Genomics and Systems Biology Research Group, Institute of Natural Resource Sciences (IUNR), Zurich University of Applied Sciences ZHAW, Wädenswil, Switzerland. ⁸Present Address: Scientific Computing Facility, Max Planck Institute of Molecular Cell Biology and Genetics, Pfotenhauerstrasse 108, 01307 Dresden, Germany.

Received: 30 November 2017 Accepted: 31 July 2018

Published online: 13 August 2018

References

- Driscoll D. Compounding TPN admixtures: then and now. *J Parenter Enter Nutr.* 2003;27:433–8.
- Kuwahara T, Kaneda S, Shimono K, Inoue Y. Growth of microorganisms in total parenteral nutrition solutions without lipid. *Int J Med Sci.* 2010;7:43–7.
- Turpin RS, Canada T, Rosenthal V, Nitzki-George D, Liu FX, Mercaldi CJ, et al. Bloodstream infections associated with parenteral nutrition preparation methods in the United States: a retrospective, large database analysis. *J Parenter Enter Nutr.* 2012;36:169–76.
- Gupta N, Hocevar SN, Moulton-Meissner HA, Stevens KM, McIntyre MG, Jensen B, et al. Outbreak of *Serratia marcescens* bloodstream infections in patients receiving parenteral nutrition prepared by a compounding pharmacy. *Clin Infect Dis.* 2014;59:1–8.
- Vonberg RP, Gastmeier P. Hospital-acquired infections related to contaminated substances. *J Hosp Infect.* 2007;65:15–23.
- Távora ACVCF, Castro AB, Militão MAM, Girão JE, de CB RK, LGF T. Risk factors for nosocomial infection in a Brazilian neonatal intensive care unit. *Braz J Infect Dis.* 2008;12:75–9.
- Perlman SE, Saiman L, Larson EL. Risk factors for late-onset health care-associated bloodstream infections in patients in neonatal intensive care units. *Am J Infect Control.* 2007;35:177–82.
- von Dolinger de Brito D, Oliveira EJ, Abdallah VOS, da Costa Darini AL, Filho PPG. An outbreak of *Acinetobacter baumannii* septicemia in a neonatal intensive care unit of a university hospital in Brazil. *Braz J Infect Dis.* 2005;9:301–9.
- Kilic A, Li H, Mellmann A, Basustaoglu AC, Kul M, Senses Z, et al. *Acinetobacter septicus* sp. nov. association with a nosocomial outbreak of bacteremia in a neonatal intensive care unit. *J Clin Microbiol.* 2008;46:902–8.
- McGrath EJ, Chopra T, Abdel-Haq N, Prenay K, Koo W, Asmar BI, et al. An outbreak of carbapenem-resistant *Acinetobacter baumannii* infection in a neonatal intensive care unit: investigation and control. *Infect Control Hosp Epidemiol.* 2011;32:34–41.
- Ng PC, Herrington RA, Beane CA, Ghoneim ATM, Dear PRF. An outbreak of acinetobacter septicemia in a neonatal intensive care unit. *J Hosp Infect.* 1989;14:363–8.
- Zhao VM, Griffith DP, Blumberg HM, Dave NJ, Battey CH, McNally TA, et al. Characterization of post-hospital infections in adults requiring home parenteral nutrition. *Nutrition.* 2013;29:52–9.
- Pharmacopeia, United States. US Pharmacopeial convention. Rockville: X. X. I. I; 1995.
- Devulder G, Perrière G, Baty F, Flandrois JP. BIBI, a bioinformatics bacterial identification tool. *J Clin Microbiol.* 2003;41:1785–7.
- Cieslinski JM, Arend L, Tuon FF, Silva EP, Ekermann RGS, Dalla-Costa LM, et al. Molecular epidemiology characterization of OXA-23 carbapenemase-producing *Acinetobacter baumannii* isolated from 8 Brazilian hospitals using repetitive sequence-based PCR. *Diagn Microbiol Infect Dis.* 2013;77:337–40.
- Higgins PG, Janssen K, Fresen MM, Wisplinghoff H, Seifert H. Molecular epidemiology of *Acinetobacter baumannii* bloodstream isolates obtained in the United States from 1995 to 2004 using rep-PCR and multilocus sequence typing. *J Clin Microbiol.* 2012;50:3493–500.
- Pillonetto M, Arend L, Faoro H, D'Espindula HRS, Jochen B, Smits THM, et al. Emended description of the genus *Phytobacter*, its type species *Phytobacter diazotrophicus* (Zhang 2008) and description of *Phytobacter ursingii* sp. nov. *Int J Syst Evol Microbiol.* 2018;68:176–84.
- Brady C, Cleenwerck I, Venter S, Vancanneyt M, Swings J, Coutinho T. Phylogeny and identification of *Pantoea* species associated with plants, humans and the natural environment based on multilocus sequence analysis (MLSA). *Syst Appl Microbiol.* 2008;31:447–60.
- Kumar S, Stecher G, Tamura K. MEGA7: molecular evolutionary genetics analysis version 7.0 for bigger datasets brief communication. *Mol Biol Evol.* 2016;33(7):1870–4. <https://doi.org/10.1093/molbev/msw054>. Epub 2016 Mar 22.
- Blom J, Kreis J, Spänig S, Juhre T, Bertelli C, Ernst C, et al. EDGAR 2.0: an enhanced software platform for comparative gene content analyses. *Nucleic Acids Res.* 2016;44(W1):W22–8. <https://doi.org/10.1093/nar/gkw255>. Epub 2016 Apr 20.
- Meyer F, Goesmann A, McHardy AC, Bartels D, Bekel T, Clausen J, et al. GenDB—an open source genome annotation system for prokaryote genomes. *Nucleic Acids Res.* 2003;31:2187–95.
- Healy M, Huang J, Bittner T, Lising M, Frye S, Raza S, et al. Microbial DNA typing by automated repetitive-sequence-based PCR. *J Clin Microbiol.* 2005;43:199–207.
- Brenner DJ, Fanning GR, Leete Knutson JK, Steigerwalt AG, Krichevsky MI. Attempts to classify Herbicola group-*Enterobacter agglomerans* strains by deoxyribonucleic acid hybridization and phenotypic tests. *Int J Syst Bacteriol.* 1984;34:45–55.
- Freny J, Gruer LD, Bornstein N, Kiredjian M, Guilvout I, Letouzey MN, et al. Septicemia caused by *Agrobacterium* sp. *J Clin Microbiol.* 1985;22:683–5.
- Zhang GX, Peng GX, Wang ET, Yan H, Yuan QH, Zhang W, et al. Diverse endophytic nitrogen-fixing bacteria isolated from wild rice *Oryza rufipogon* and description of *Phytobacter diazotrophicus* gen. nov. sp. nov. *Arch Microbiol.* 2008;189:431–9.
- Maki DG, Martin WT. Nationwide epidemic of septicemia caused by contaminated infusion products. IV. Growth of microbial pathogens in fluids for intravenous infusion. *J Infect Dis.* 1975;131:267–72.
- Maki DG, Rhame FS, Mackel DC, Bennett JV. Nationwide epidemic of septicemia caused by contaminated intravenous products. *Am J Med.* 1976;60:471–85.
- Bergman KA, Arends JP, Schölvinck EH. *Pantoea agglomerans* septicemia in three newborn infants. *Pediatr Infect Dis J.* 2007;26:453–4.
- Bicudo EL, Macedo VO, Carrara MA, Castro FFS, Rage RI. Nosocomial outbreak of *Pantoea agglomerans* in a pediatric urgent care center. *Braz J Infect Dis.* 2007;11:281–4.
- Abdullah A, Sabbir Alam SM, Sultana M, Hossain MA. BioCluster: tool for identification and clustering of *Enterobacteriaceae* based on biochemical data. *Genomics Proteomics Bioinformatics.* 2015;13:192–9.
- Cheng A, Liu CY, Tsai HY, Hsu MS, Yang CJ, Huang YT, et al. Bacteremia caused by *Pantoea agglomerans* at a medical center in Taiwan, 2000–2010. *J Microbiol Immunol Infect.* 2013;46:187–94.
- Boszczykowski Í, Nóbrega de Almeida Júnior J, Peixoto de Miranda ÉJ, Pinheiro Freire M, Guimarães T, Chaves CE, et al. Nosocomial outbreak of *Pantoea agglomerans* bacteraemia associated with contaminated anticoagulant citrate dextrose solution: new name, old bug? *J Hosp Infect.* 2012;80, 255–258.
- Garrett DO, McDonald LC, Wanderley A, Wanderley C, Miller P, Carr J, et al. An outbreak of neonatal deaths in Brazil associated with contaminated intravenous fluids. *J Infect Dis.* 2002;186:81–6.

34. Campos LC, Lobianco LF, Seki LM, Santos RMR, Asensi MD. Outbreak of *Enterobacter hormaechei* septicaemia in newborns caused by contaminated parenteral nutrition in Brazil. *J Hosp Infect.* 2007;66:95–7.
35. Rezzonico F, Smits THM, Duffy B. Misidentification slanders *Pantoea agglomerans* as a serial killer. *J Hosp Infect.* 2012;81:137–9.
36. Rezzonico F, Stockwell VO, Tonolla M, Duffy B, Smits THM. *Pantoea* clinical isolates cannot be accurately assigned to species based on metabolic profiling. *Transpl Infect Dis.* 2012;14:220–1.

Ready to submit your research? Choose BMC and benefit from:

- fast, convenient online submission
- thorough peer review by experienced researchers in your field
- rapid publication on acceptance
- support for research data, including large and complex data types
- gold Open Access which fosters wider collaboration and increased citations
- maximum visibility for your research: over 100M website views per year

At BMC, research is always in progress.

Learn more biomedcentral.com/submissions

