

RESEARCH ARTICLE

Open Access



Therapeutic preferences and outcomes in newly diagnosed patients with Crohn's diseases in the biological era in Hungary: a nationwide study based on the National Health Insurance Fund database

Zsuzsanna Kurti^{1†}, Akos Ilias^{1†}, Lorant Gonczi¹, Zsuzsanna Vegh¹, Petra Fadgyas-Freyler², Gyula Korponay², Petra A. Golovics¹, Barbara D. Lovasz^{1,4} and Peter L. Lakatos^{1,3,5*}

Abstract

Background: Accelerated treatment strategy, including tight disease control and early aggressive therapy with immunosuppressives (IS) and biological agents have become increasingly common in inflammatory bowel disease (IBD). The aim of the present study was to estimate the early treatment strategy and outcomes in newly diagnosed patients with Crohn's disease (CD) between 2004 and 2008 and 2009–2015 in the whole IBD population in Hungary based on the administrative database of the National Health Insurance Fund (OEP).

Methods: We used the administrative database of the OEP, the only nationwide state-owned health insurance provider in Hungary. Patients were identified through previously reported algorithms using the ICD-10 codes for CD in the out-, inpatient (medical, surgical) non-primary care records and drug prescription databases between 2004 and 2015. Patients were stratified according to the year of diagnosis and maximum treatment steps during the first 3 years after diagnosis.

Results: A total of 6173 (male/female: 46.12%/53.87%) newly diagnosed CD patients with physician-diagnosed IBD were found in the period of 2004–2015. The use of 5-ASA and steroids remained common in the biological era, while immunosuppressives and biologicals were started earlier and became more frequent among patients diagnosed after 2009. The probability of biological therapy was 2.9%/6.4% and 8.4%/13.7% after 1 and 3 years in patients diagnosed in 2004–2008/2009–2015. The probability of hospitalization in the first 3 years after diagnosis was different before and after 2009, according to the maximal treatment step (overall 55.7%vs. 47.4% ($p = 0.001$), anti-TNF: 73%vs. 66.7% ($p = 0.103$), IS: 64.6% vs. 56.1% ($p = 0.001$), steroid: 44.2%vs. 36.8% ($p < 0.007$), 5-ASA: 32.6% vs. 26.7% $p = 0.157$). In contrast, surgery rates were not significantly different in patients diagnosed before and after 2009 according to the maximum treatment step (overall 16.0%vs.15.3%($p = 0.672$) anti-TNF 26.7%vs.27.2% ($p = 0.993$), IS: 24.1%vs.22.2% ($p = 0.565$), steroid 8.1%vs.7.9% ($p = 0.896$), 5-ASA 10%vs. 11% ($p = 0.816$)).

(Continued on next page)

* Correspondence: kihlakpet99@gmail.com; peter.lakatos@mcgill.ca

[†]Equal contributors

¹1st Department of Medicine, Semmelweis University, Budapest H-1083, Hungary

³Division of Gastroenterology, McGill University Health Centre, 1650 Ave. Cedar, D16.173.1, Montreal, QC H3G 1A4, Canada

Full list of author information is available at the end of the article



(Continued from previous page)

Conclusions: IS and biological exposure became more frequent, while hospitalization decreased and surgery remained low but constant during the observation period.

Use of steroids and 5-ASA remained high after 2009. The association between the maximal treatment step and hospitalization/surgery rates suggests that maximal treatment step can be regarded as proxy severity marker in patients with IBD.

Keywords: Treatment strategy, Crohn's disease, Inflammatory bowel disease, Biological therapy, Surgery, Administrative database, Nationwide

Background

Inflammatory bowel diseases (IBD) are chronic conditions affecting the patient's quality of life, leading to disability; moreover, a significant proportion of patients require surgery. In the past decades, the prevalence of IBD increased worldwide [1–3]. However, development of medical therapy improved patients' perspectives significantly. In recent years, treatment strategies and therapeutic targets have evolved: "treat-to-target" has become an important in-patient management and therapeutic goals have been determined [4]. Additionally, accelerated treatment strategy, including tight disease control and early aggressive therapy with immunosuppressives (IS) and biological agents (mostly anti-TNFs) have become increasingly common in IBD. Emerging data suggest that earlier introduction of IS and biologicals may be associated with improved outcomes including lower risk for surgery and hospitalization [5–9]. These improvements in the management of IBD are reflected by clinical guidelines as well [10]. Nevertheless, it is important to investigate how these changing paradigms affect every day clinical practice and clinical outcomes.

The recent ECCO-EpiCom studies based on the 2010 and 2011 inception cohorts provided data about up-to-date IBD incidences, treatment steps and initial disease course of IBD in the biological era in Europe. Differences were reported between Western and Eastern Europe, not only in the prevalence of IBD, but also regarding treatment strategy and disease outcomes [11–13]. Data on the natural history and therapeutic strategies of Crohn's disease was also reported in population-based studies from North-America, including data from the Mayo clinic, Olmsted County, Minnesota and the Manitoba Cohort, Canada [8, 14, 15]. It is essential to note, that direct comparison of the above studies may be difficult due to differences in health care insurance systems and data acquisition.

In Hungary, previous population-based studies on the epidemiology and treatment strategy in IBD were reported in the Veszprem population-based IBD database. Nevertheless, data on medical strategy were reported from the pre-biological era [16, 17]. Recently, our group reported nationwide estimate of IBD prevalence from the administrative database of the National Health

Insurance Fund [18]. However, the effect of medical therapy on disease outcomes has not been studied yet.

Therefore, the aim of the present study was to investigate the early treatment strategy and outcomes in newly diagnosed patients with Crohn's disease (CD) between 2004 and 2015 in Hungary. Since the prescription regulations changed significantly at the end of 2008 with easier access to biologicals, it has been aimed to evaluate surgical outcomes and hospitalization rates before and after the change of prescription-regulations in the administrative database of the National Health Insurance Fund (OEP) which is the only (state-owned) health insurance provider in Hungary.

Methods

We used the administrative database of the National Health Insurance Fund (OEP). Patients were identified through previously reported algorithms using the ICD-10 codes for Crohn's disease (K50..) in the out- and in-patient (medical, surgical) non-primary care records and drug prescription databases between 1st of January 2004 and 1st of January 2015 [18]. Hospitalizations, surgical episodes and drug prescriptions were identified through the database of the OEP, which contains data on in- and outpatient stays, outpatient procedures and filled drug prescriptions. Any event with a CD-related ICD-10 code was regarded as related.

New patients with Crohn's disease was defined as no CD-related outpatient visits and/or IBD-related drug prescriptions in the last 3 years before the start of the observational period and at least 2 CD-related outpatient visits and/or IBD-related drug prescription during the observational period. Patients with less than 3 years follow up were excluded from the study. Patients were stratified according to the year of diagnosis and the maximum treatment step during the first 3 years after diagnosis.

We determined time to prescription of different drug classes, (5-ASA, steroid, IS and biologicals) and stratified patient groups according to the maximal therapeutic step (1. group – maximum therapeutic step: 5-ASA therapy (oral and/or topical 5-ASA treatment), 2. group – maximum therapeutic step: steroid therapy (systemic or topical steroids), 3. group – maximum therapeutic step:

IS therapy (azathioprine, 6-mercaptopurine, cyclosporine or methotrexate), 4. group – maximum biological therapy (infliximab or adalimumab)). Finally, we calculated hospitalization and surgery rates according to the maximal treatment step and the diagnostic period (diagnosis in 2004–2008 vs. 2009–2015).

Statistical methods

SPSS® 20 (SPSS Inc., Chicago, IL) was used for statistical analysis. Khi-square test and Fischer-exact tests were used to compare categorical variables. Kaplan-Meier analysis and Cox-Mantel LogRank test was used for time dependent change of the categorical variables. Time from diagnosis were weighted to 30-days periods in the Kaplan-Meier analysis. A *p* value of < 0.05 was regarded as statistically significant.

Results

Patient characteristics

A total of 6173 (male/female: 46.12%/53.87%) newly diagnosed CD patients with physician-diagnosed Crohn’s disease were found between 2004 and 2015. 4458 and 1715 newly diagnosed CD patients with an available 3-year follow up period were identified between 01.01.2004

and 31.12.2008 and between 01.01.2009 and 01.01.2015. Distribution of age at diagnosis was similar in the two diagnostic eras, the most prevalent age group at the diagnosis of Crohn’s disease was the 20–29 years old group in both gender and in both diagnostic eras (Fig. 1).

Therapeutic strategy

Drug exposures were calculated in a time dependent analysis. The cumulative probability of 5-ASA, steroid, IS and biological therapy were 95.7, 74.8, 37.1 and 4% after 12 months and 97.7, 81.3, 49.4 and 9.9% after 3 years from diagnosis (Fig. 2).

The use of 5-ASA was 93%/90.8% after 3 months and 97.9%/97.1% after 3 years from the diagnosis in the whole patient groups diagnosed before and after 2009, and it did not differ according to the different maximal treatment steps. Use of 5-ASA was similar in the two diagnostic eras in each patient group.

Cumulative steroid exposure was also comparable in both groups (64.4%/66% after 3 months, 72.6%/74.2% after 12 months, 79.8%/79.9% after 3 years in patients diagnosed before and after 2009). Probability of early steroid exposure was different according to the maximum treatment step but not according to the year of

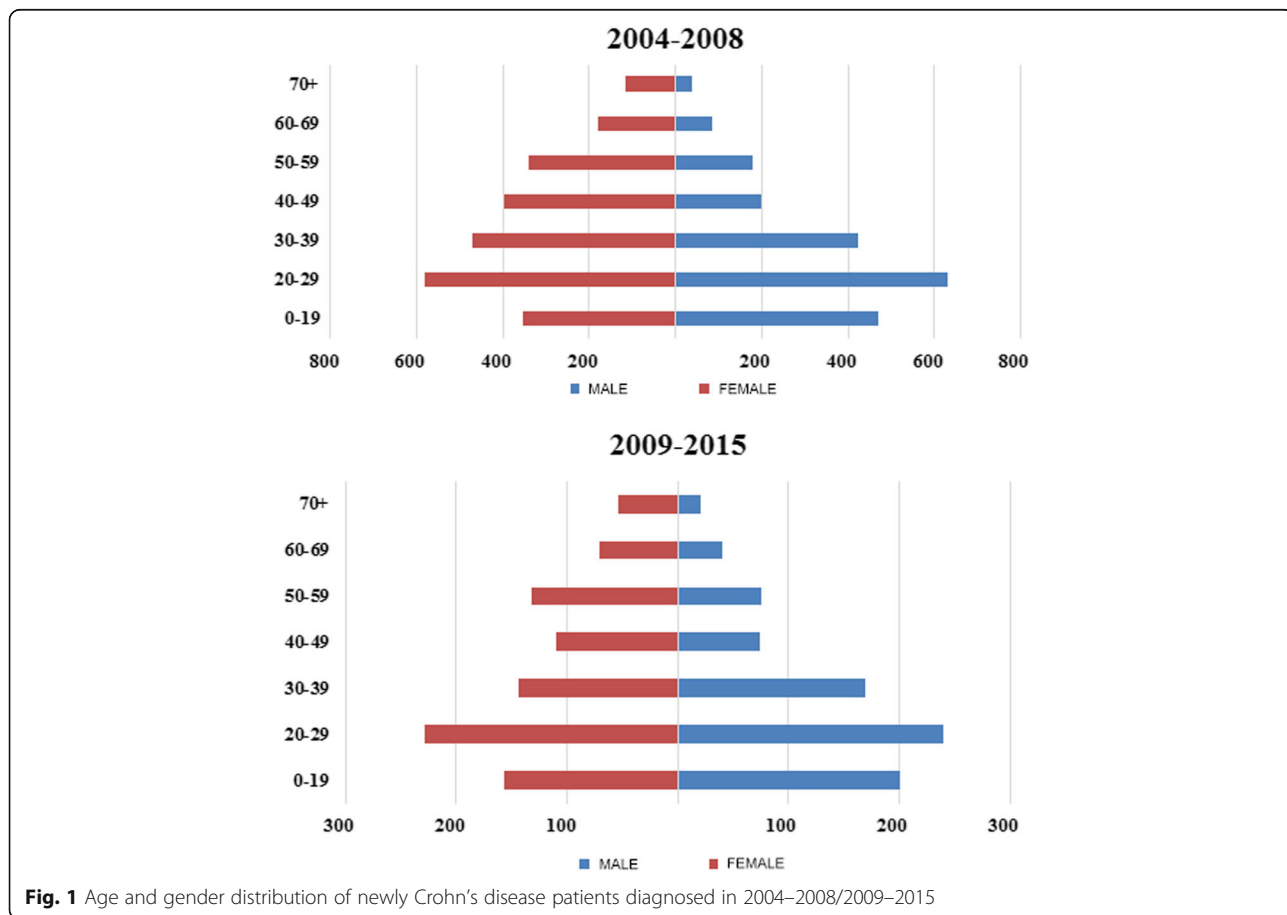
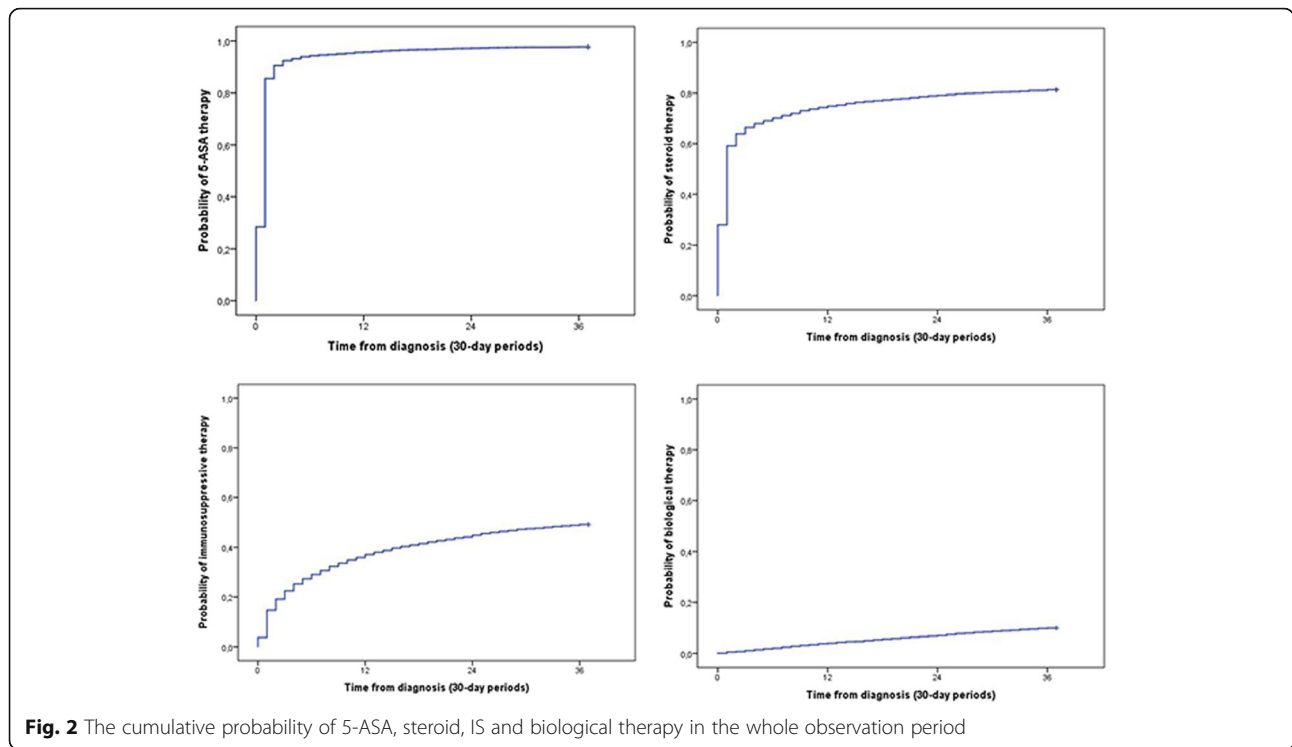


Fig. 1 Age and gender distribution of newly Crohn’s disease patients diagnosed in 2004–2008/2009–2015

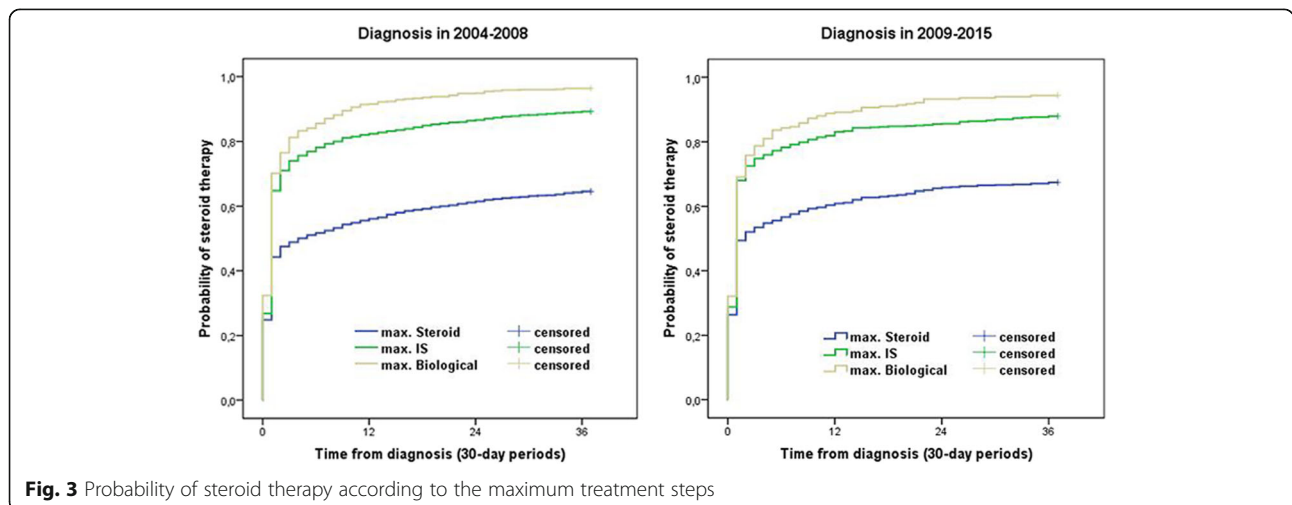


diagnosis: it was 48.9%/53.5% after the first 3 months from diagnosis in patients with steroids as maximum treatment step (pLogRank = 0.09), 74%/74.8% in patients with IS as maximum treatment step (pLogRank = 0.95) and 81.2%/78.7% in patients with biological therapy as maximum step (pLogRank = 0.31), in patients diagnosed before and after 2009 (Fig. 3).

Exposure to immunosuppressive therapy was frequent in both diagnostic eras, with higher probability (pLogRank < 0.001 for the max. IS group and $p = 0.007$ for the max. Biological group) and earlier initiation in the second period. Probability of immunosuppressive

therapy was 17.5% vs. 22.9% at 3 months, 29.3% vs. 35.4% at 1 year and 39.9% vs. 45.2% at 3 years in 2004–2008 vs. 2009–2015 in patients with IS as maximum treatment step. Exposure of IS was higher in patients needing anti-TNF therapy: 31.5% vs. 40.3% at 3 months, 66.7% vs. 73.1% at 1 year and 86.7% vs. 91.8% at 3 years in 2004–2008 vs. 2009–2015 (Fig. 4).

The probability of biological therapy was significantly higher in patients diagnosed between 2009 and 2015 (pLogRank < 0.001). It was 1% vs. 1.2% after 3 months, 2.9% vs. 6.4% after 1 year and 8.4% vs. 13.7% after 3 years in 2004–2008 vs. 2009–2015 (Fig. 5).



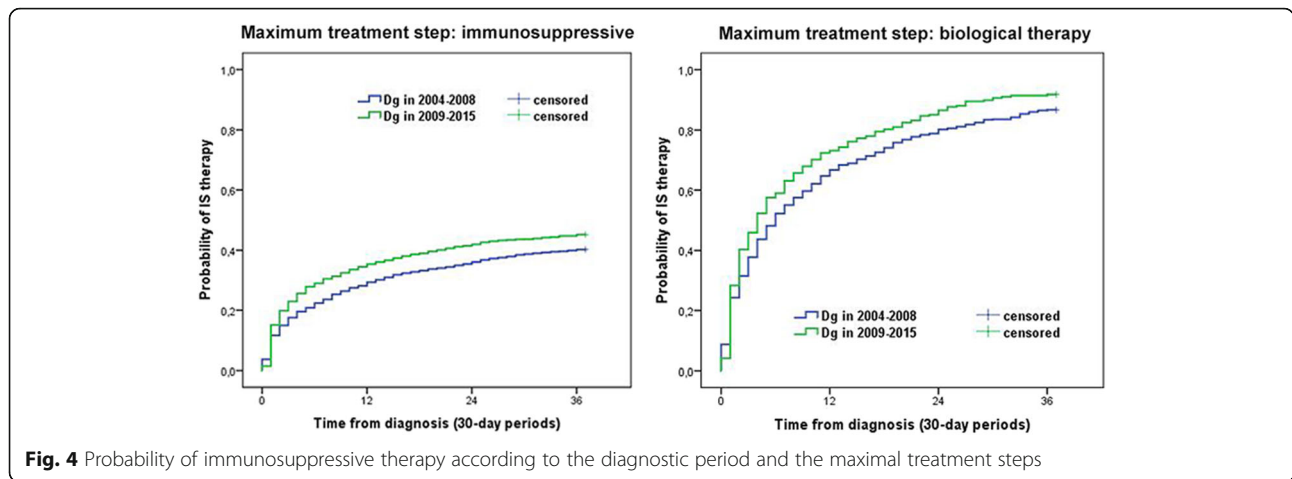


Fig. 4 Probability of immunosuppressive therapy according to the diagnostic period and the maximal treatment steps

Hospitalizations and surgery rates according to the maximal treatment steps in the biological era

Probability of hospitalizations in the first 3-years after the diagnosis was significantly lower in patients diagnosed in 2009–2015 than in patients diagnosed in 2004–2008 (total probability: 55.7% vs. 47.4% in patients diagnosed in 2004–2008 vs. in 2009–2015, pLogRank < 0.001 for the total cohort). When we analysed the hospitalization rates according to the maximal treatment steps, the difference was significant in the steroid and IS group (total probabilities: 5-ASA group: 32.6% vs. 26.7% pLogRank = 0.16, Steroid group: 44.2% vs. 36.8% pLogRank = 0.007, IS group: 64.6% vs. 56.1% pLogRank < 0.001, Biological group: 73% vs. 66.7% pLogRank = 0.10) (Fig. 6).

In contrast, surgery rates were altogether low and not significantly different in the two periods, but they were

associated with the maximum therapeutic step. A proportion of patients underwent surgery at around the time of diagnosis (within 3 months from diagnosis) in both diagnostic eras, regardless of the maximum treatment step (9.1%/8.6% in the total cohort in 2004–2008/2009–2015). Thereafter the probability of surgery remained unchanged in patients with 5-ASA and steroid only, while it increased continuously in the IS and biological group (at 1 year: overall: 12% vs. 11.9%, biological therapy: 20.9% vs. 19.6%, IS: 17.4% vs. 17.3%, steroid 5.8% vs. 6%, 5-ASA 8.9% vs. 9.1%, at 3 years: overall: 16.0% vs. 15.3% (pLogRank = 0.672), biological therapy: 26,7% vs. 27.2% (pLogRank = 0.993), IS: 24.1% vs. 22.2% (pLogRank = 0.565), steroid 8.1% vs. 7.9% (pLogRank = 0.896), 5-ASA 10% vs. 11% (pLogRank = 0.816) in patients diagnosed in 2004–2008 vs. 2009–2015) (Fig. 7).

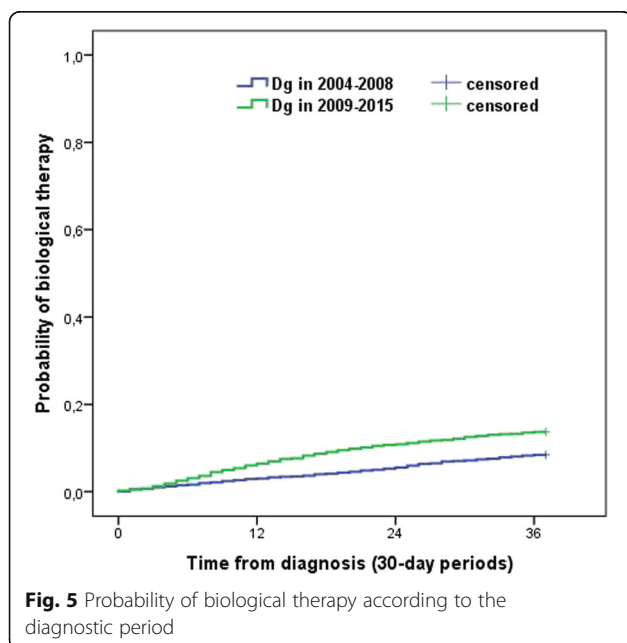


Fig. 5 Probability of biological therapy according to the diagnostic period

Discussion

The aim of the present study was to demonstrate a nationwide description about the therapeutic strategy and outcomes in newly diagnosed patients with Crohn’s disease in the biological era in Hungary.

The main findings of the study were that hospitalization but not surgical rates differed significantly in patients diagnosed between 2004 and 2008 and between 2009 and 2015, along with the earlier and more frequent use of IS and biologicals in the second diagnostic period. Of note, surgery rates were altogether low. In addition, hospitalizations and surgeries were more frequent in the biological and the IS group compared to patients with steroids and 5-ASA only, suggesting that maximal therapeutic steps can be used as severity markers in patients with IBD when analysing health insurance databases.

In the present study, the overall probability of surgery was 9.1%/8.6% after 3 months, 12%/11.9% after 1 year and 16%/15.3% after 3 years from diagnosis among patients diagnosed in 2004–2008/2009–2015. This is in

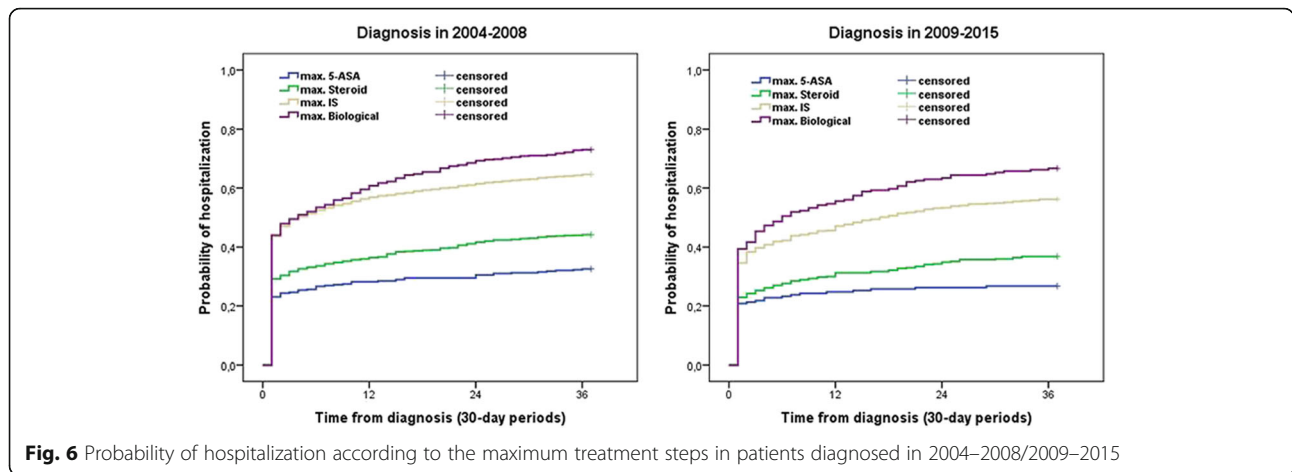


Fig. 6 Probability of hospitalization according to the maximum treatment steps in patients diagnosed in 2004–2008/2009–2015

line with new data reported after 2000 [6]. According to the meta-analysis of Frolkis et al. based on 30 population-based studies, the cumulative risk of surgery in CD-patients diagnosed in the 2000s was 12.6 and 24.2% after 1 and 5 years from diagnosis [19]. The study from Manitoba also reported that probability of surgery was 10% and 18% after 1 and 5 year from diagnosis in CD patients diagnosed after 2000 [8]. In contrast, ECCO-EpiCom 2011 inception cohort study showed that 24 and 7% of patients from Eastern Europe and Western Europe/Australia underwent surgery within the first year of diagnosis [13].

Interestingly, the present study demonstrated that a stable proportion of patients (app. 9%) had surgery at around the diagnosis (within 3 months from diagnosis) in both diagnostic eras, independently from the maximum treatment step and further disease course. Similarly, Solberg et al. reported that very early CD-related surgery rates remained unchanged and did not influence long term clinical remission rates or outcomes [20]. In contrast, a recent study from Portugal concluded that patients undergoing an early surgery after diagnosis

have an increased reoperation rate [21]. Of note, the rate of early surgery within 1 year from diagnosis remained stable in most epidemiological cohorts suggesting that at least a proportion of early surgeries can be regarded as unavoidable [6, 19].

Furthermore, our results suggest that the earlier and more frequent use of biological therapy did not reduce the probability of early surgery during the first 3 years from diagnosis. Previous population-based studies reported that the need for surgery significantly decreased between the 1980s and 2000s, parallel with the increased use of immunosuppressives [7, 8, 22]. Similarly, a former study from Hungary demonstrated that increased and earlier azathioprine use was independently associated with significant change in the natural history of CD and reduced surgery rates [17]. However, only few population-based studies are available from the biological era, and it is still conflictive whether biological therapy further decreases surgical rates on a population-based level [6, 23]. A recent meta-analysis based on 7 randomized controlled trial studies concluded that anti-TNFs were efficacious in reducing hospitalization and

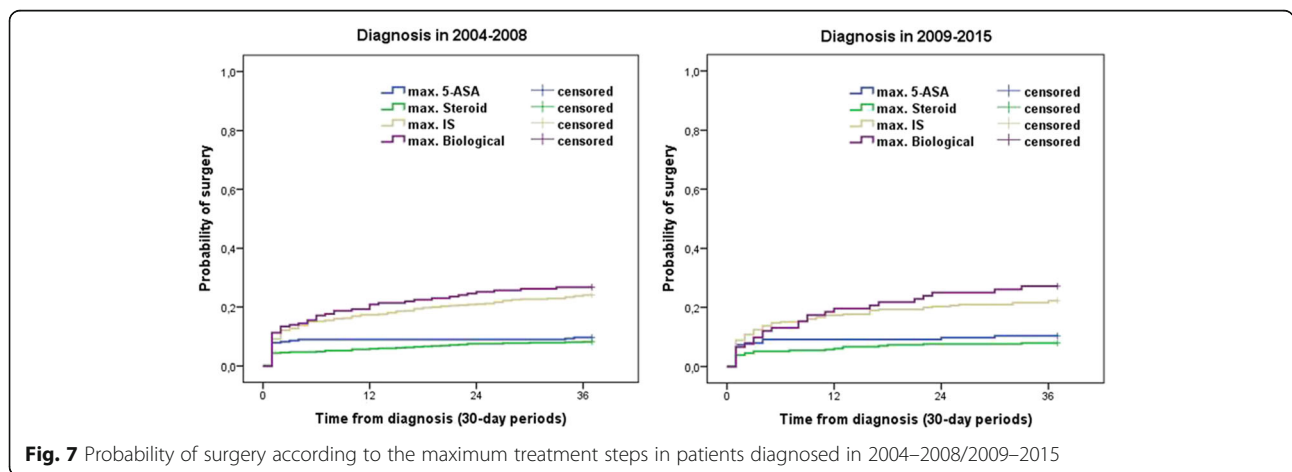


Fig. 7 Probability of surgery according to the maximum treatment steps in patients diagnosed in 2004–2008/2009–2015

surgery rates compared to placebo, while no statistically significant reduction was noted to azathioprine (AZA) and vedolizumab in moderate-to-severe CD patients [23]. Similarly to our findings, a Spanish study concluded that IFX availability did not reduce surgical requirements with a step-up therapeutic algorithm in newly diagnosed CD patients [24]. Moreover, a study based on the Manitoba-cohort suggested that decline in surgery was associated with the care by a gastroenterology specialist but not with the immunomodulatory use in multivariate analysis. This study also concluded that use of more aggressive medical therapy can be a severity marker in non-randomized trial settings [8]. Furthermore, the recent update of the 5-years follow-up of the 2010 ECCO-EpiCom inception cohort study also reported that similar surgery and hospitalization rates were shown in Eastern and Western Europe, despite of more early and aggressive treatment with biologicals in Western Europe [25]. A study from Northern California concluded that prevalence of prolonged steroid exposure and hospitalization rates declined, whereas surgery rates remained constant in parallel with the increasing use of IS and biologicals in CD [26].

The probability of hospitalization was frequent around the diagnosis, but thereafter the frequency of hospitalization was not associated with the maximal therapeutic steps in the present study. Frequency of hospitalization was lower in all treatment groups in the second diagnostic period (decrease was significant in the steroid and IS group), showing a change in the patient management and the possible role of the accelerated treatment strategy. These results are in concordance with previous data that hospitalization is frequent around the diagnosis but it declines significantly from the second year after the diagnosis [27, 28]. Nevertheless, hospitalization rates vary significantly between countries, depending on health care/reimbursement policy and ethnic differences [2, 6].

The other primary aim of the study was to analyse the therapeutic strategy in the two diagnostic eras. Surprisingly, almost every CD patient received 5-ASA therapy in Hungary at around the diagnosis. This result is in concordance with the result of the ECCO-EpiCom 2011 inception cohort study and with other nationwide studies [13, 14]. Possible explanations are that physicians prescribe 5-ASAs until the diagnosis is finally confirmed or patients with mild CD are given 5-ASAs for maintenance therapy. Similarly, a national survey from Germany showed that app. 40% of physicians followed “wait and see” management strategy without any medical therapy in mild CD patients as maintenance, while third of physicians preferred 5-ASA in these cases [29].

Interestingly, the use of steroids remained common in both periods. The majority of patient received steroid

therapy as initial treatment at diagnosis and it increased slightly over time. Compared to other recent population-based studies, the use of steroids was more frequent in the present cohort. In previous population-based studies the half of the CD patients received steroids during the early disease course [8, 30, 31]. Other studies showed steroid sparing effect of the increased IS and biological use [7, 26]. In contrast, the ECCO-EpiCom 2011 inception cohort reported that 61 and 67% of patients from Eastern Europe and Western Europe/Australia received systemic steroids during the first year of disease course [13].

The use of immunosuppressives was more frequent in the second period with earlier initiation. This suggests an accelerated step-care strategy in Hungary, similarly to those reported from the Spanish Administrative Database [24]. In the first period, the probability of IS use after 1 year from diagnosis was similar to the previous data from Hungary from the same decade (35.5% vs. 34.8%), while rate of IS use in the second period was higher, similar to rates from Western-Europe (41.3% vs. 45%) [13, 16, 32].

Finally, the use of biologicals was more frequent with earlier initiation in the second period in accordance with the changes of the drug prescription guidelines of OEP allowing an earlier and more extensive availability of anti-TNFs after 2009 in Hungary. In a previous study by Rencz et al. Hungary had the best access to biologicals in IBD in Central-Eastern Europe [33]. However, the use of biological therapy was in line with the Eastern European data in the 2010 ECCO EpiCom inception cohort study, it remained less frequent compared to Western Europe [25, 32].

The authors are aware of the possible limitations of the present work including the limitations of administrative databases such as the lack of disease phenotype data, time bias due to patient stratification or possible bias of patient ascertainment. In contrast, the strength of the present study is the nationwide nature of the study. The administrative database of the National Health Fund is unique in many regards, as in Hungary this is the only insurance plan with a full coverage and it collects in-, outpatient visits, diagnostic procedures and drug prescription data. Thus, it offers an invaluable opportunity to study treatment practices and changes in outcomes representative for the full spectrum of IBD patients in Hungary. Moreover, earlier publications suggested that the first 3-years of the disease are the most sensitive and representative for the further disease course [16, 34]. Thus, results from the present study can be extrapolated in the prediction of the further disease course as well as may be generalizable to most administrative databases from countries with similar health insurance policies.

Conclusion

In conclusion, the present study, representing the nationwide practices in Hungary suggests, that there is an accelerated therapeutic strategy in CD in Hungary with IS and biological use becoming more frequent. Hospitalization decreased in the whole cohort, while surgery remained low but constant during the observation period.

Exposure to steroids and 5-ASA remained high. The association between maximal treatment step and hospitalization and surgery rates suggests that maximal treatment steps can be regarded as proxy severity markers in patients with IBD.

Abbreviations

5-ASA: 5-Aminosalicylic Acid; Anti-TNF: Anti - tumor necrosis factor; AZA: Azathioprine; CD: Crohn's disease; ECCO-EpiCom: European Crohn's Colitis Organization Epidemiology Committee; IBD: Inflammatory bowel disease; ICD-10: 10th revision of the International Statistical Classification of Diseases and Related Health Problems; IS: Immunosuppressives; OEP: National Health Insurance Fund,

Acknowledgments

Gimesi-Orszagh J contributed in the study providing the data of the National Health Insurance Fund.

Funding

This work was supported by OTKA (Hungarian Scientific Research Fund) Research Grant 2015 (Grant ID: 115345).

Availability of data and materials

Technical appendix, statistical code, and dataset available from Peter L Lakatos at kislakpet99@gmail.com

Authors' contributions

ZK: data collection, data validation and draft of the article; AI, ZV, PAG, BDL, LG: data collection and article preparation; PFF, GK: statistical analysis, data collection. PLL: study design, data collection, supervising the collection and validation of patients, database construction, statistical analysis, and article preparation; All authors approved the final draft submitted.

Ethics approval and consent to participate

The study complies with the principles of the Declaration of Helsinki. The study protocol was approved by the Semmelweis University Regional and Institutional Committee of Science and Research Ethics (ETT TUKEB 52/2014).

Consent for publication

Not applicable – this manuscript does not contain any individual person's data in any form (including individual details, images or videos).

Competing interests

No author reported any potential conflict of interest regarding the present study.

Publisher's Note

Springer Nature remains neutral with regard to jurisdictional claims in published maps and institutional affiliations.

Author details

¹1st Department of Medicine, Semmelweis University, Budapest H-1083, Hungary. ²Strategic Analysis Department, National Health Insurance Fund (OEP), Budapest H-1139, Hungary. ³Division of Gastroenterology, McGill University Health Centre, 1650 Ave. Cedar, D16.173.1, Montreal, QC H3G 1A4, Canada. ⁴Faculty of Health Sciences, Department of Clinical Studies, Semmelweis University, Budapest H-1088, Hungary. ⁵Division of Gastroenterology/Hepatology Unit and Endoscopy, Semmelweis University, Koranyi S 2A, Budapest H-1083, Hungary.

Received: 20 September 2017 Accepted: 18 January 2018

Published online: 30 January 2018

References

- Molodecky NA, Soon IS, Rabi DM, Ghali WA, Ferris M, Chernoff G, Benchimol EI, Panaccione R, Ghosh S, Barkema HW, Kaplan GG. Increasing incidence and prevalence of the inflammatory bowel diseases with time, based on systematic review. *Gastroenterology*. 2012;142:46–54. [PMID: 22001864. <https://doi.org/10.1053/j.gastro.2011.10.001>].
- Burisch J, Jess T, Martinato M, Lakatos PL, ECCO-EpiCom. The burden of inflammatory bowel disease in Europe. *J Crohns Colitis*. 2013;7:322–37. [PMID: 23395397. <https://doi.org/10.1016/j.crohns.2013.01.010>].
- Vegh Z, Kurti Z, Lakatos P. The epidemiology of inflammatory bowel diseases from west to east. *J Dig Dis*. 2017;18:92–8. [PMID: 28102560. <https://doi.org/10.1111/1751-2980.12449>].
- Peyrin-Biroulet L, Sandborn W, Sands BE, Reinisch W, Bemelman W, Bryant RV, D'Haens G, Dotan I, Dubinsky M, Feagan B, Fiorino G, Geary R, Krishnareddy S, Lakatos PL, Loftus EV Jr, Marteau P, Munkholm P, Murdoch TB, Ordás I, Panaccione R, Riddell RH, Ruel J, Rubin DT, Samaan M, Siegel CA, Silverberg MS, Stoker J, Schreiber S, Travis S, Van Assche G, Danese S, Panes J, Bouguen G, O'Donnell S, Pariente B, Winer S, Hanauer S, Colombel JF. Selecting therapeutic targets in inflammatory bowel disease (STRIDE): determining therapeutic goals for treat-to-target. *Am J Gastroenterol*. 2015; 110:1324–38. [PMID: 26303131. <https://doi.org/10.1038/ajg.2015.233>].
- Mandel MD, Balint A, Golovics PA, Vegh Z, Mohas A, Szilagyi B, Szabo A, Kurti Z, Kiss LS, Lovasz BD, Gecse KB, Farkas K, Molnar T, Lakatos PL. Decreasing trends in hospitalizations during anti-TNF therapy are associated with time to anti-TNF therapy: results from two referral centres. *Dig Liver Dis*. 2014;46:985–90. [PMID: 25156871. <https://doi.org/10.1016/j.dld.2014.07.168>].
- Bernstein CN, Loftus EV, Ng SC, Lakatos PL, Moum B. Epidemiology and natural history task force of the International Organization for the Study of inflammatory bowel disease (IOIBD). Hospitalisations and surgery in Crohn's disease. *Gut*. 2012; 61:622–9. [PMID: 22267595. <https://doi.org/10.1136/gutjnl-2011-301397>].
- Rungoe C, Langholz E, Andersson M, Basit S, Nielsen NM, Wohlfahrt J, Jess T. Changes in medical treatment and surgery rates in inflammatory bowel disease: a nationwide cohort study 1979–2011. *Gut*. 2014;63:1607–16. [PMID: 24056767. <https://doi.org/10.1136/gutjnl-2013-305607>].
- Nguyen GC, Nugent Z, Shaw S, Bernstein CN. Outcomes of patients with Crohn's disease improved from 1988 to 2008 and were associated with increased specialist care. *Gastroenterology*. 2011;141:90–7. [PMID: 21458455. <https://doi.org/10.1053/j.gastro.2011.03.050>].
- Mandel MD, Miheller P, Müllner K, Golovics PA, Lakatos PL. Have biologics changed the natural history of Crohn's disease? *Dig Dis*. 2014;32:351–9. [PMID: 24969279. <https://doi.org/10.1159/000358135>].
- Gomollón F, Dignass A, Annesé TH, Van Assche G, Lindsay JO, Peyrin-Biroulet L, Cullen GJ, Daperno M, Kucharzik T, Rieder F, Almer S, Armuzzi A, Harbord M, Langhorst J, Sans M, Chowers Y, Fiorino G, Juillerat P, Mantzaris GJ, Rizzello F, Vavricka S, Gionchetti P, ECCO. 3rd European evidence-based consensus on the diagnosis and Management of Crohn's disease 2016: part 1: diagnosis and medical management. *J Crohns Colitis*. 2017;11:3–25. PMID: 27660341 doi: <https://doi.org/10.1093/ecco-jcc/jjw168>
- Burisch J, Pedersen N, Čuković-Čavka S, Brinar M, Kaimakliotis I, Duricova D, Shonová O, Vind I, Avnstrøm S, Thorsgaard N, Andersen V, Krabbe S, Dahlerup JF, Salupere R, Nielsen KR, Olsen J, Manninen P, Collin P, Tsianos EV, Katsanos KH, Ladefoged K, Lakatos L, Björnsson E, Ragnarsson G, Bailey Y, Odes S, Schwartz D, Martinato M, Lupinacci G, Milla M, De Padova A, D'Inca R, Beltrami M, Kupcinskas L, Kiudelis G, Turcan S, Tighineanu O, Mihiu I, Magro F, Barros LF, Goldis A, Lazar D, Belousova E, Nikulina I, Hernandez V, Martinez-Ares D, Almer S, Zhulina Y, Halfvarson J, Arebi N, Sebastian S, Lakatos PL, Langholz E, Munkholm P, EpiCom-group. East–west gradient in the incidence of inflammatory bowel disease in Europe: the ECCO-EpiCom inception cohort. *Gut*. 2014;63:588–97. [PMID: 23604131. <https://doi.org/10.1136/gutjnl-2013-304636>].
- Vegh Z, Burisch J, Pedersen N, Kaimakliotis I, Duricova D, Bortlik M, Avnstrøm S, Vinding KK, Olsen J, Nielsen KR, Katsanos KH, Tsianos EV, Lakatos L, Schwartz D, Odes S, Lupinacci G, De Padova A, Jonaitis L, Kupcinskas L, Turcan S, Tighineanu O, Mihiu I, Barros LF, Magro F, Lazar D, Goldis A, Fernandez A, Hernandez V, Niewiadomski O, Bell S, Langholz E, Munkholm P, Lakatos PL, EpiCom-group. Incidence and initial disease course of inflammatory bowel diseases in 2011 in Europe and Australia: results of the 2011 ECCO-EpiCom inception cohort. *J Crohns Colitis*. 2014;8: 1506–15. [PMID: 24998983. <https://doi.org/10.1016/j.crohns.2014.06.004>].

13. Vegh Z, Burisch J, Pedersen N, Kaimakliotis I, Duricova D, Bortlik M, Vinding KK, Avnstrøm S, Olsen J, Nielsen KR, Katsanos KH, Tsianos EV, Lakatos L, Schwartz D, Odes S, D'Inca R, Beltrami M, Kiudelis G, Kupcinskas L, Jucov A, Turcan S, Barros LF, Magro F, Lazar D, Goldis A, de Castro L, Hernandez V, Niewiadomski O, Bell S, Langholz E, Munkholm P, Lakatos PL, EpiCom-group. Treatment steps, surgery, and hospitalization rates during the first year of follow-up in patients with inflammatory bowel diseases from the 2011 Ecco-EpiCom inception cohort. *J Crohns Colitis*. 2015;9:747–53. PMID: 26055976 doi: <https://doi.org/10.1093/ecco-jcc/jjv099>
14. Peyrin-Biroulet L, Harmsen WS, Tremaine WJ, Zinsmeister AR, Sandborn WJ, Loftus EV Jr. Surgery in a population-based cohort of Crohn's disease from Olmsted county, Minnesota (1970–2004). *Am J Gastroenterol*. 2012;10:1693–701. [PMID: 22945286. <https://doi.org/10.1038/ajg.2012.298>.
15. Shivashankar R, Tremaine WJ, Harmsen WS, Loftus EV Jr. Incidence and prevalence of Crohn's disease and ulcerative colitis in Olmsted County, Minnesota from 1970 through 2010. *Clin Gastroenterol Hepatol*. 2017;15: 857–63. [PMID: 27856364. <https://doi.org/10.1016/j.cgh.2016.10.039>.
16. Lakatos L, Kiss LS, David G, Pandur T, Erdelyi Z, Mester G, Balogh M, Szpocs I, Molnar C, Komaromi E, Lakatos PL. Incidence, disease phenotype at diagnosis, and early disease course in inflammatory bowel diseases in western Hungary, 2002–2006. *Inflamm Bowel Dis*. 2011;17:2558–65. [PMID: 22072315. <https://doi.org/10.1002/ibd.21607>.
17. Lakatos PL, Golovics PA, David G, Pandur T, Erdelyi Z, Horvath A, Mester G, Balogh M, Szpocs I, Molnar C, Komaromi E, Veres G, Lovasz BD, Szathmari M, Kiss LS, Lakatos L. Has there been a change in the natural history of Crohn's disease? Surgical rates and medical management in a population-based inception cohort from western Hungary between 1977–2009. *Am J Gastroenterol*. 2012;107:579–88. [PMID: 22233693. <https://doi.org/10.1038/ajg.2011.448>.
18. Kurti Z, Vegh Z, Golovics PA, Fagyas-Freyler P, Gecse KB, Gonczi L, Gimesi-Orszagh J, Lovasz BD, Lakatos PL. Nationwide prevalence and drug treatment practices of inflammatory bowel diseases in Hungary: a population-based study based on the National Health Insurance Fund database. *Dig Liver Dis*. 2016;48:1302–7. [PMID: 27481587. <https://doi.org/10.1016/j.dld.2016.07.012>.
19. Frolkis AD, Dykeman J, Negrón ME, Debruyjn J, Jette N, Fiest KM, Frolkis T, Barkema HW, Rioux KP, Panaccione R, Ghosh S, Wiebe S, Kaplan GG. Risk of surgery for inflammatory bowel diseases has decreased over time: a systematic review and meta-analysis of population-based studies. *Gastroenterology*. 2013;145:996–1006. [PMID: 23896172. <https://doi.org/10.1053/j.gastro.2013.07.041>.
20. Solberg IC, Vatn MH, Høie O, Stray N, Sauar J, Jahnsen J, Moum B, Lygren I, IBSEN Study Group. Clinical course in Crohn's disease: results of a Norwegian population-based ten-year follow-up study. *Clin Gastroenterol Hepatol*. 2007;5: 1430–8. [PMID: 18054751. <https://doi.org/10.1016/j.cgh.2007.09.002>.
21. Magro F, Dias CC, Coelho R, Santos PM, Fernandes S, Caetano C, Rodrigues A, Portela F, Oliveira A, Ministro P, Cancela E, Vieira AI, Barosa R, Cotter J, Carvalho P, Cremers I, Trabulo D, Caldeira P, Antunes A, Rosa I, Moleiro J, Peixe P, Herculano R, Gonçalves R, Gonçalves B, Tavares Sousa H, Contente L, Morna H, Lopes S. Impact of early surgery and immunosuppression on Crohn's disease disabling outcomes. *Inflamm Bowel Dis*. 2017;23:289–97. [PMID: 28107278. <https://doi.org/10.1097/MIB.0000000000001007>.
22. Chatu S, Saxena S, Subramanian V, Curcin V, Yadegarfar G, Gunn L, Majeed A, Pollok RC. The impact of timing and duration of thiopurine treatment on first intestinal resection in Crohn's disease: national UK population-based study 1989–2010. *Am J Gastroenterol*. 2014;109:409–16. [PMID: 24469612. <https://doi.org/10.1038/ajg.2013.462>.
23. Mao EJ, Hazlewood GS, Kaplan GG, Peyrin-Biroulet L, Ananthkrishnan AN. Systematic review with meta-analysis: comparative efficacy of immunosuppressants and biologics for reducing hospitalisation and surgery in Crohn's disease and ulcerative colitis. *Aliment Pharmacol Ther*. 2017;45:3–13. [PMID: 27862107. <https://doi.org/10.1111/apt.13847>.
24. Domènech E, Zabana Y, Garcia-Planella E, López San Román A, Nos P, Ginard D, Gordillo J, Martínez-Silva F, Beltrán B, Mañosa M, Cabré E, Gassull MA. Clinical outcome of newly diagnosed Crohn's disease: a comparative, retrospective study before and after infliximab availability. *Aliment Pharmacol Ther*. 2010;31:233–9. [PMID: 19832727. <https://doi.org/10.1111/j.1365-2036.2009.04170.x>.
25. Burisch J, Halfvarson J, Kupcinskas L, Hernandez V, Kaimakliotis I, Valpiani D, Pedersen N, Duricova D, Kievit L, Dahlerup JF, Fumery M, Salupere R, Arebi N, Nielsen KR, Giannotta M, Oksanen P, Katsanos KH, Vegh Z, Ellul P, Schwartz D, Čuković-Čavka S, D'Inca R, Turcan S, Magro F, Goldis A, Langholz E, Lakatos PL, Munkholm P, EpiCom Study Group. Disease course during the first five years following diagnosis in a prospective European population-based inception cohort – the ECCO-EpiCom cohort. *J Crohns Colitis*. 2017;11(suppl_1):S435–6. doi: <https://doi.org/10.1093/ecco-jcc/jjx002.818>
26. Herrinton LJ, Liu L, Fireman B, Lewis JD, Allison JE, Flowers N, Hutfless S, Velayos FS, Abramson O, Altschuler A, Perry GS. Time trends in therapies and outcomes for adult inflammatory bowel disease, northern California, 1998–2005. *Gastroenterology*. 2009;137:502–11. [PMID: 19445944. <https://doi.org/10.1053/j.gastro.2009.04.063>.
27. Odes S, Vardi H, Friger M, Wolters F, Russel MG, Riis L, Munkholm P, Politi P, Tsianos E, Clofent J, Vermeire S, Monteiro E, Mouzias I, Fornaciari G, Sijbrandij J, Limonard C, Van Zeijl G, O'morain C, Moum B, Vatn M, Stockbrugger R, European Collaborative Study on Inflammatory Bowel Disease. Cost analysis and cost determinants in a European inflammatory bowel disease inception cohort with 10 years of follow-up evaluation. *Gastroenterology*. 2006;131: 719–28. [PMID: 16952541. <https://doi.org/10.1053/j.gastro.2006.05.052>.
28. Munkholm P, Langholz E, Davidsen M, Binder V. Disease activity courses in a regional cohort of Crohn's disease patients. *Scand J Gastroenterol*. 1995;30: 699–706. PMID: 7481535
29. Klag T, Stange EF, Wehkamp J. Management of Crohn's disease - are guidelines transferred to clinical practice? *United European Gastroenterol J*. 2015;3:371–80. [PMID: 26279846. <https://doi.org/10.1177/2050640615580228>.
30. Munkholm P, Langholz E, Davidsen M, Binder V. Frequency of glucocorticoid resistance and dependency in Crohn's disease. *Gut*. 1994;35: 360–2. PMID: 8150347
31. Peyrin-Biroulet L, Loftus EV Jr, Colombel JF, Sandborn WJ. The natural history of adult Crohn's disease in population-based cohorts. *Am J Gastroenterol*. 2010; 105:289–97. [PMID: 19861953. <https://doi.org/10.1038/ajg.2009.579>.
32. Ott C, Taksas A, Obermeier F, Schnoy E, Salzberger B, Müller M. How fast up the ladder? Factors associated with immunosuppressive or anti-TNF therapies in IBD patients at early stages: results from a population-based cohort. *Int J Color Dis*. 2014;29:1329–38. [PMID: 25179426. <https://doi.org/10.1007/s00384-014-2002-z>.
33. Rencz F, Péntek M, Bortlik M, Zagorowicz E, Hlavaty T, Śliwczyński A, Diculescu MM, Kupcinskas L, Gecse KB, Gulácsi L, Lakatos PL. Biological therapy in inflammatory bowel diseases: access in central and Eastern Europe. *World J Gastroenterol*. 2015;21:1728–37. [PMID: 25684937. <https://doi.org/10.3748/wjg.v21.i6.1728>.
34. Munkholm P, Langholz E, Davidsen M, Binder V. Disease activity courses in a regional cohort of Crohn's disease patients. *Scand J Gastroenterol*. 1995;30: 699–706.

Submit your next manuscript to BioMed Central and we will help you at every step:

- We accept pre-submission inquiries
- Our selector tool helps you to find the most relevant journal
- We provide round the clock customer support
- Convenient online submission
- Thorough peer review
- Inclusion in PubMed and all major indexing services
- Maximum visibility for your research

Submit your manuscript at
www.biomedcentral.com/submit

